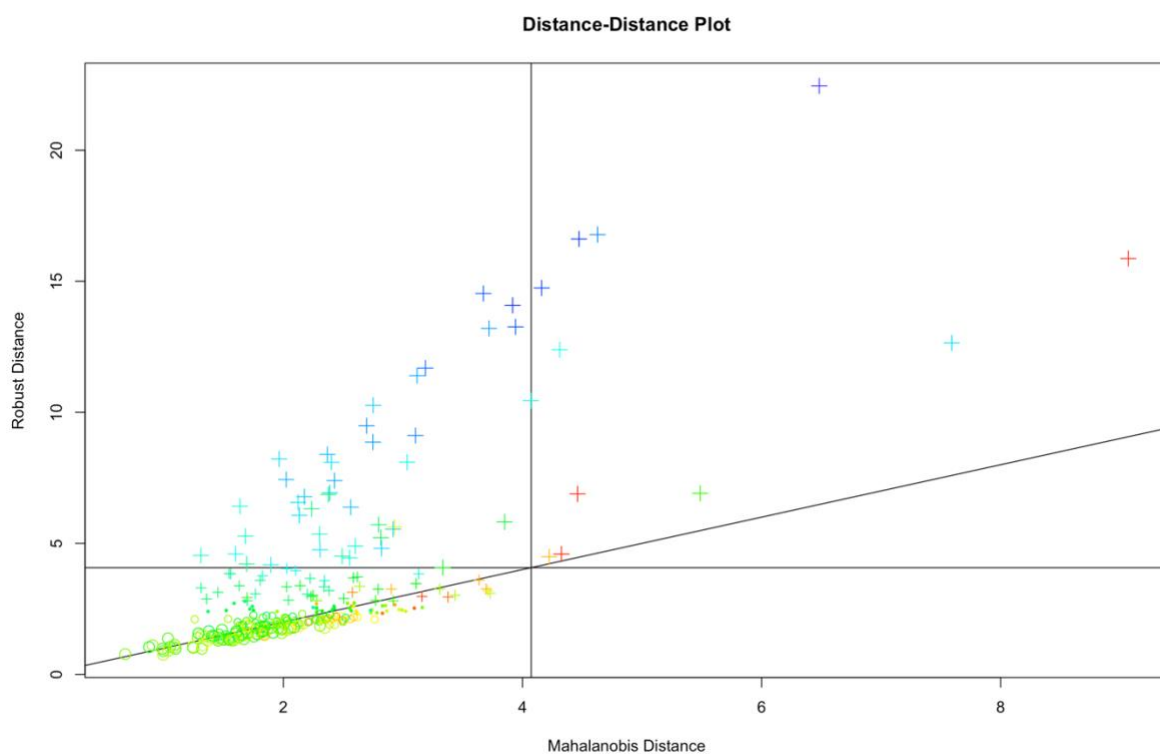


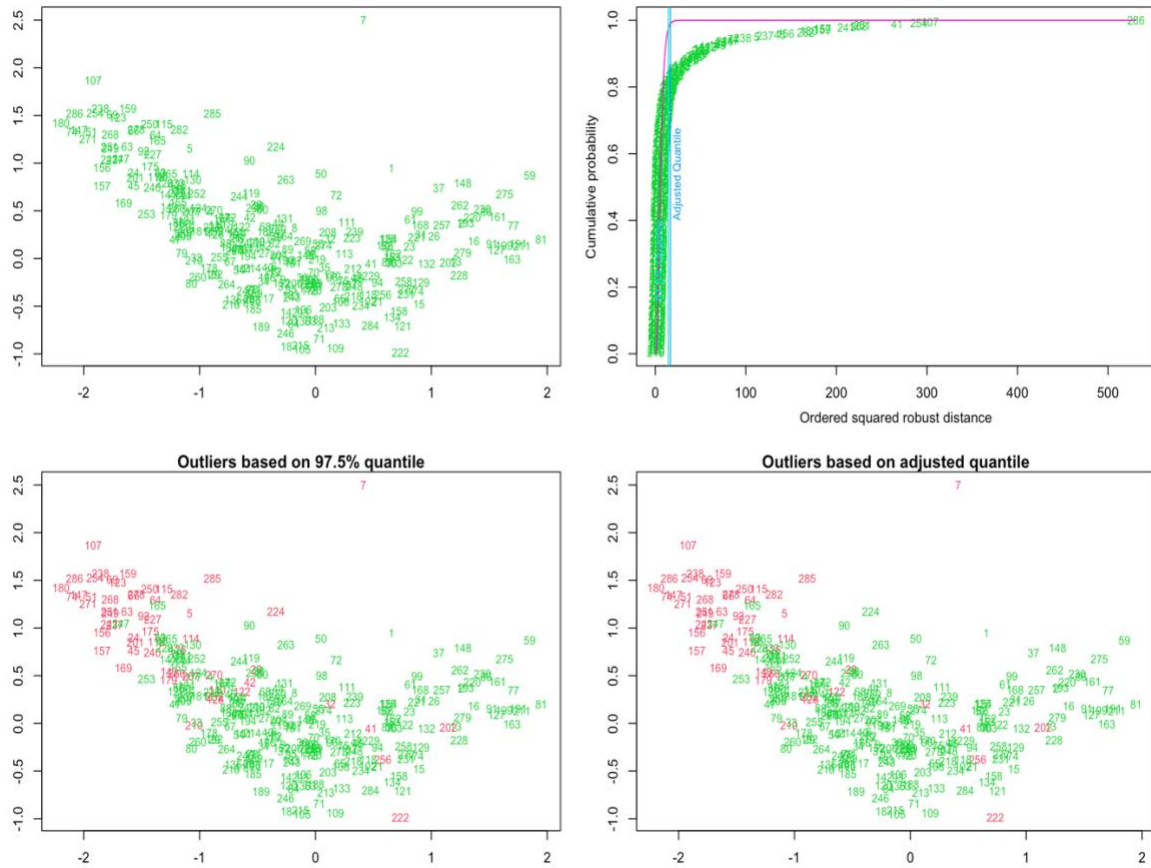
Supplementary Material

SI table 1. Overview of Quality Assurance (QA) metrics for DTI data

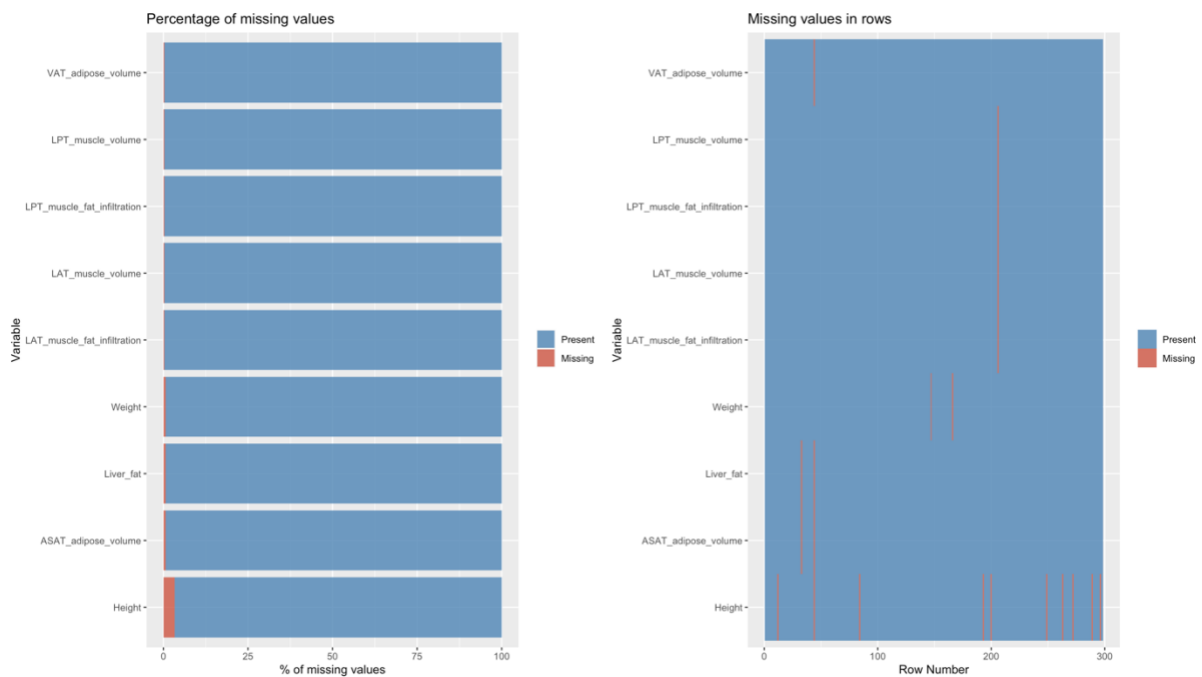
QA metric abbreviation	Measure
tsnr	Temporal-signal-to-noise-ratio
gmean	Global mean intensity
drift	Linear drift of signal over time
outmax	Outlier measurement maximum
outmean	Outlier measurement average
meanABSrmsb	Average absolute root-mean square
meanRELRmsb	Average relative root-mean square
maxABSrmsb	Maximum absolute root-mean square
maxRELRmsb	Maximum relative root-mean square



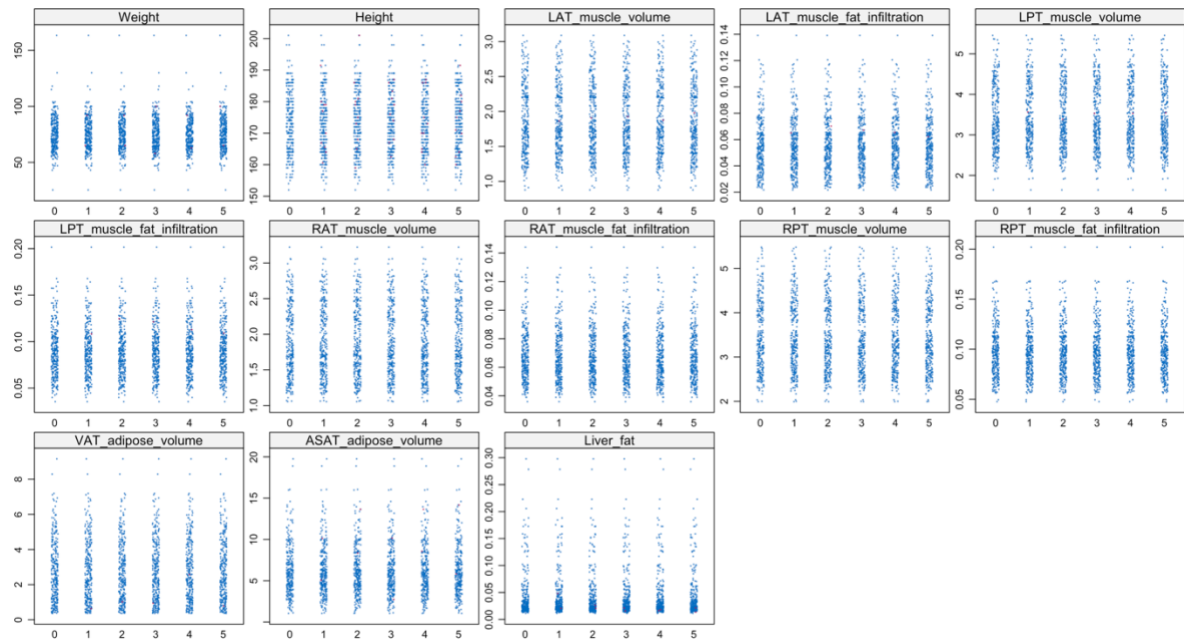
SI Figure 1. Multivariate outlier detection algorithm. Showing the Mahalanobis distance plot, which measures the distance between a point and a distribution to which that point belongs.



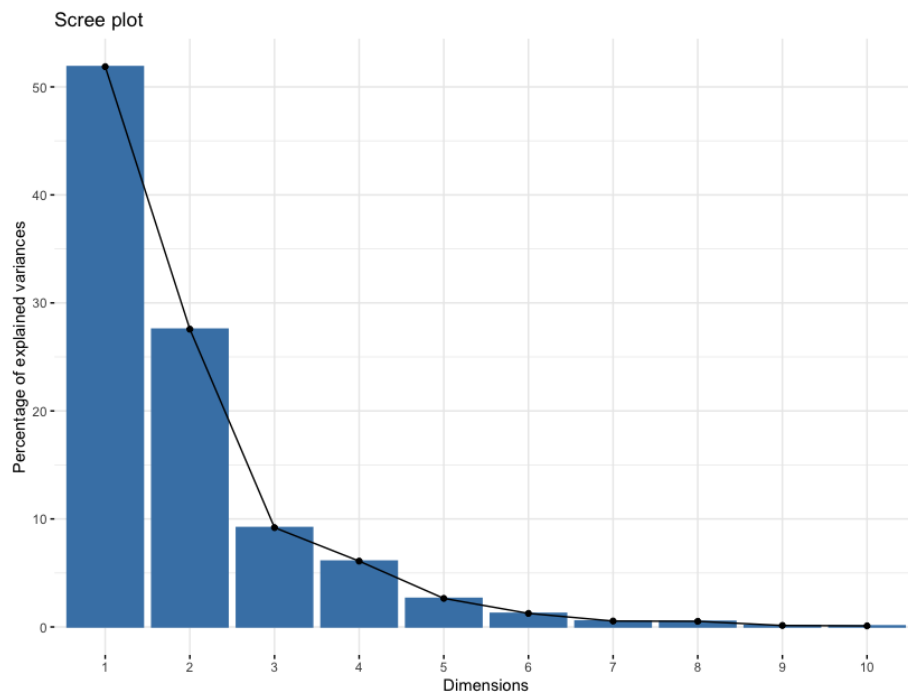
SI Figure 2. Quantile and adjusted quantile. Showing quantile plots which will solve for and order the squared Mahalanobis Distances for the given observations and plot them against the empirical Chi-Squared distribution function of these values. Every observation outside of the Chi-Square quantile is coloured in red.



SI Figure 3. Missing data report. Showing percentage of missing data (left) and placement of missing data (right) for each adiposity measure prior to imputation.



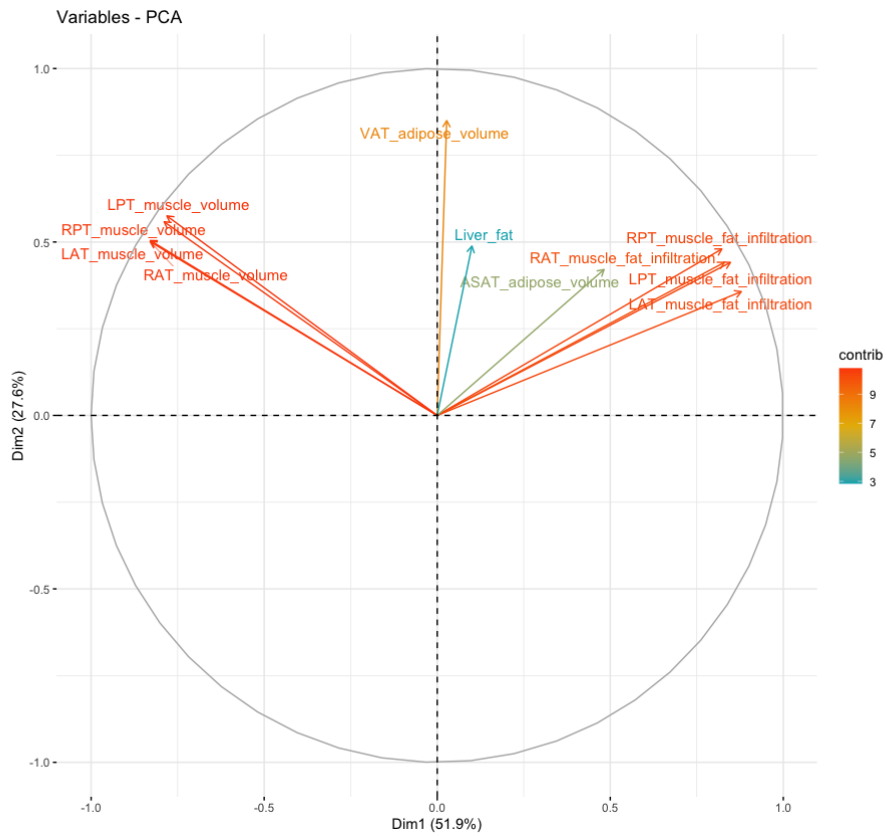
SI Figure 4. MICE imputation. Showing strip plot of imputed adiposity measures for five separate imputations. Blue dots represent original data, red dots represent imputed data.



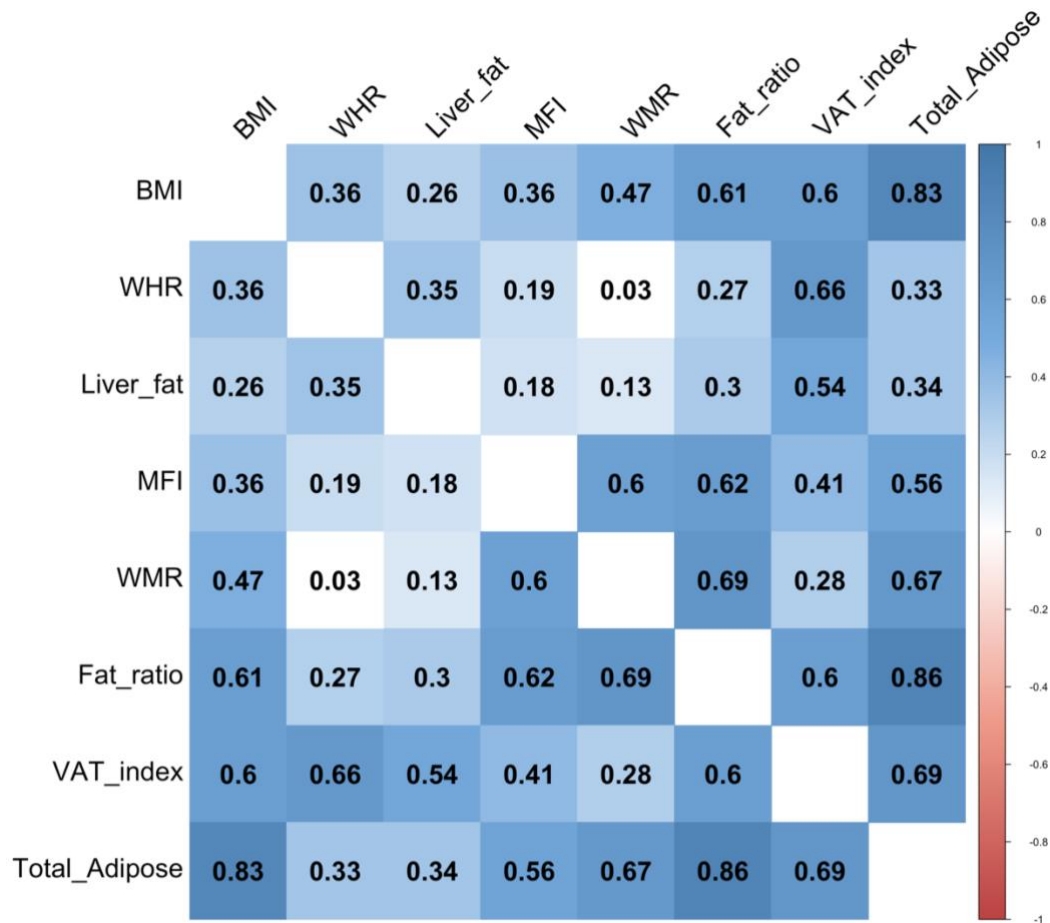
SI Figure 5. Principle component analysis. Scree plot showing percentage of explained variance for each dimension.



SI Figure 6. Hierarchical clustering. Showing results of ‘hclust’ using the complete linkage method to form hierarchical clusters.



SI Figure 7. Principle component correlations. Showing directionality of correlations between adiposity variables, where positive correlated variables point to the same side and negative correlated variables point to opposites sides of the graph.



SI Figure 8. Adiposity measure relatedness. Correlation matrix showing relatedness of each adiposity variable.

SI Table 2. Bayes Factor (BF). Showing evidence ratio interpretations.

Bayes factor BF_{12}			Interpretation
	>	100	Extreme evidence for M_1
30	-	100	Very Strong evidence for M_1
10	-	30	Strong evidence for M_1
3	-	10	Moderate evidence for M_1
1	-	3	Anecdotal evidence for M_1
	1		No evidence
1/3	-	1	Anecdotal evidence for M_2
1/10	-	1/3	Moderate evidence for M_2
1/30	-	1/10	Strong evidence for M_2
1/100	-	1/30	Very Strong evidence for M_2
	<	1/100	Extreme evidence for M_2

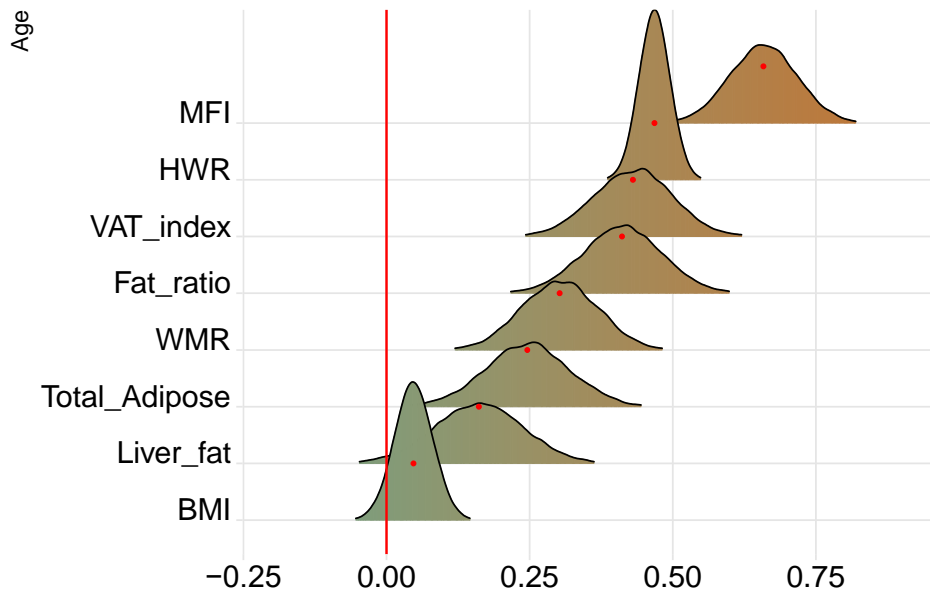
SI Table 3. Average R^2 , root mean square error (RMSE), and mean absolute error (MAE) \pm standard deviation for the age prediction models within the training sample (Cam-CAN), test set, and age-corrected test set.

		Training sample (Cam-CAN)	Test set before age-bias correction	Test set after age-bias correction
DTI	R^2	0.82 ± 0.04	0.72	0.92
	RMSE	7.67 ± 0.83	10.11	5.12
	MAE	6.15 ± 0.55	8.37	4.06
T1	R^2	0.81 ± 0.04	0.73	0.87
	RMSE	7.93 ± 0.84	9.11	6.55
	MAE	6.19 ± 0.83	7.2	5.21

Effects of age on adiposity measures

SI Figure 5 shows the posterior distributions for age on each adiposity measure. Full table of results for age effects on each variable can be seen in SI Table 4. Supplementary visualisation of the effects of age on a selection of adiposity measures can be seen in SI Figures 12.

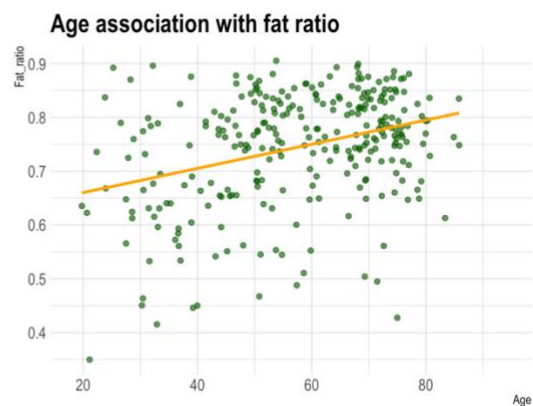
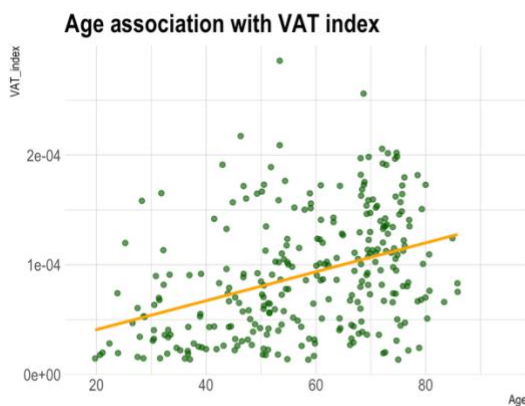
Briefly, the tests revealed extreme evidence ($BF < 0.01$) in favour of an association between age and WMR ($\beta = 0.30$), fat ratio ($\beta = 0.41$), VAT index ($\beta = 0.43$), WHR ($\beta = 0.47$), and MFI ($\beta = 0.66$). Very strong evidence was provided for total adiposity ($BF = 0.06$, $\beta = 0.25$). The tests revealed strong evidence in favour of no association between age and BMI ($BF = 10.87$, $\beta = 0.05$), while anecdotal evidence was provided for liver fat ($BF = 1.58$, $\beta = 0.16$).



SI Figure 9. Associations between adiposity and age. The figure shows posterior distributions of the estimates of the coefficient. Estimates for age on each adiposity measure with red dot in each plot representing mean value. Colour scale follows direction of evidence. Width of distribution represents the uncertainty of the parameter estimates.

SI Table 4. Associations between adiposity measures and age. Variable ~ Age + Sex + Time (models = main effect).

variable	predictor	estimate	lower 95	upper 95	p_higher_0	p_lower_0	evidence_0
WMR	Age	0.302	0.176	0.436	1	0	0
Fat_ratio	Age	0.411	0.277	0.549	1	0	0
VAT_index	Age	0.43	0.297	0.566	1	0	0
Total_Adipose	Age	0.246	0.105	0.397	1	0	0.06
Liver_fat	Age	0.161	0.012	0.315	0.98	0.02	1.58
WHR	Age	0.468	0.415	0.518	1	0	0
BMI	Age	0.047	-0.017	0.113	0.925	0.075	10.87
MFI	Age	0.658	0.545	0.777	1	0	0



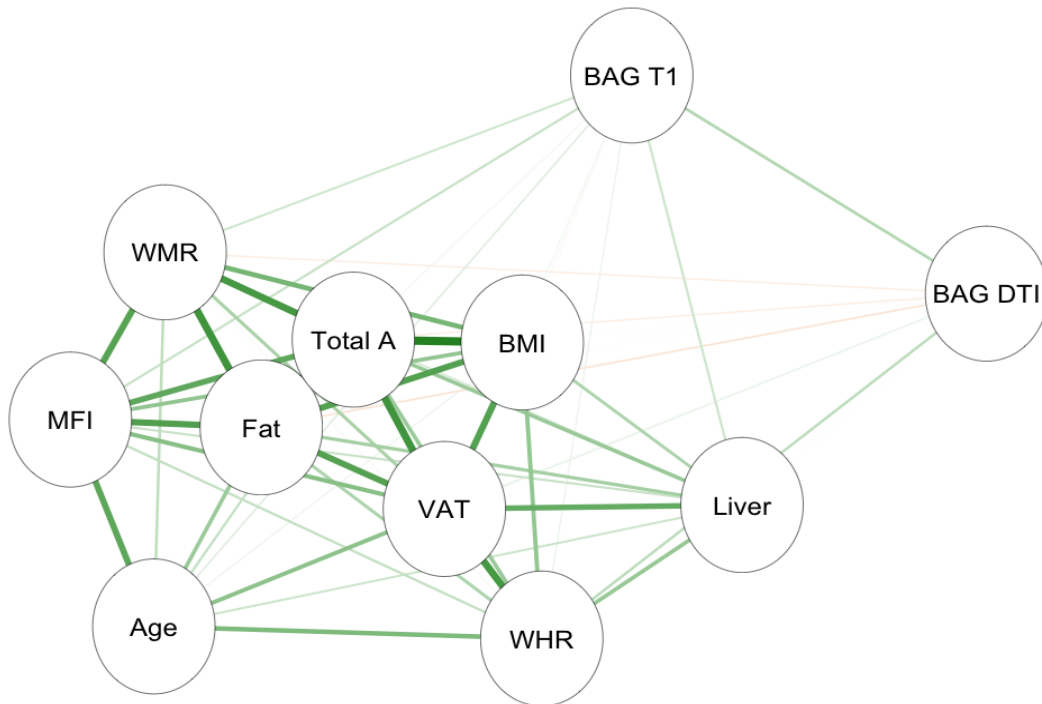
SI Figure 10. Adiposity measures as functions of age. Showing VAT Index and fat ratio.

SI Table 5. Associations between BAGs and adiposity measures. Showing main effect of each adiposity measure and interaction effects of adiposity measures and time and age.

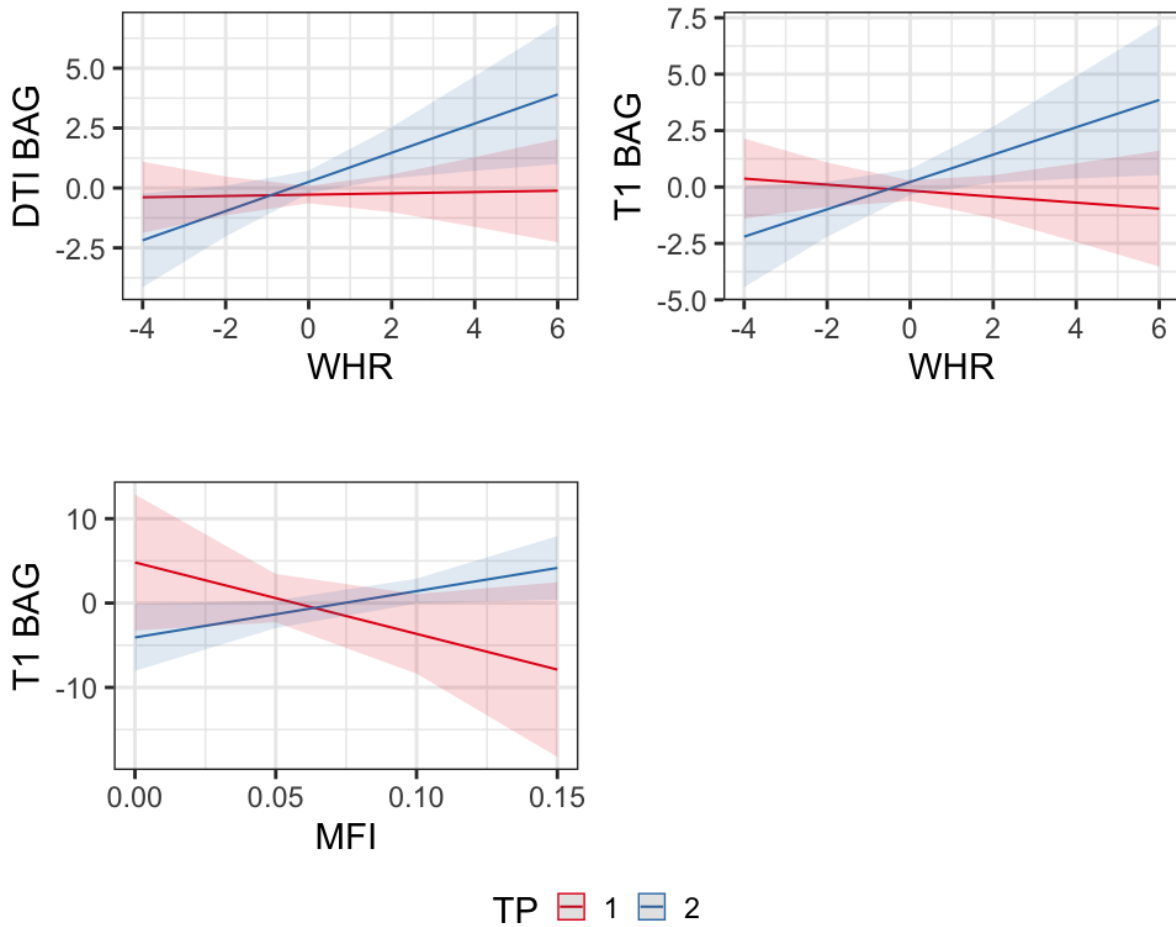
modality	cvr	estimate	lower95	upper95	p_higher_0	p_lower_0	evidence_0	prior	model
BAG_DTI	WMR	-0.131	-0.78	0.493	0.338	0.662	2.728	1	Main effect
BAG_DTI	Fat_ratio	-0.495	-1.116	0.116	0.057	0.943	0.914	1	Main effect
BAG_DTI	Total_Adipose	-0.31	-0.894	0.31	0.159	0.841	2.019	1	Main effect
BAG_DTI	VAT_index	-0.048	-0.658	0.557	0.437	0.563	3.196	1	Main effect
BAG_DTI	Liver_fat	-0.133	-0.719	0.46	0.329	0.671	2.902	1	Main effect
BAG_DTI	WHR	0.255	-0.067	0.581	0.938	0.062	1.917	1	Main effect
BAG_DTI	BMI	-0.211	-0.519	0.081	0.084	0.916	2.619	1	Main effect
BAG_DTI	MFI	0.168	-0.461	0.802	0.698	0.302	2.627	1	Main effect
BAG_DTI	TP:WMR	0.018	-0.604	0.64	0.522	0.478	3.237	1	TP-interaction
BAG_DTI	TP:Fat_ratio	-0.144	-0.683	0.41	0.304	0.696	3.117	1	TP-interaction
BAG_DTI	TP:Total_Adipose	-0.205	-0.761	0.364	0.237	0.763	2.725	1	TP-interaction
BAG_DTI	TP:VAT_index	-0.135	-0.733	0.444	0.33	0.67	2.93	1	TP-interaction
BAG_DTI	TP:Liver_fat	-0.213	-0.914	0.434	0.267	0.733	2.513	1	TP-interaction
BAG_DTI	TP:WHR	0.389	0.068	0.71	0.991	0.009	0.444	1	TP-interaction
BAG_DTI	TP:BMI	0.174	-0.124	0.48	0.869	0.131	3.434	1	TP-interaction
BAG_DTI	TP:MFI	0.43	-0.279	1.135	0.88	0.12	1.406	1	TP-interaction

BAG_DTI	Age:WMR	0.301	-0.36	0.955	0.814	0.186	1.921	1	Age-interaction
BAG_DTI	Age:Fat_ratio	0.176	-0.44	0.769	0.716	0.284	2.75	1	Age-interaction
BAG_DTI	Age:Total_Adipose	-0.014	-0.6	0.585	0.481	0.52	3.197	1	Age-interaction
BAG_DTI	Age:VAT_index	0.223	-0.455	0.895	0.741	0.259	2.299	1	Age-interaction
BAG_DTI	Age:Liver_fat	0.173	-0.559	0.898	0.678	0.322	2.26	1	Age-interaction
BAG_DTI	Age:WHR	0.363	0.07	0.683	0.99	0.01	0.44	1	Age-interaction
BAG_DTI	Age:BMI	0.205	-0.094	0.53	0.899	0.101	2.812	1	Age-interaction
BAG_DTI	Age:MFI	0.486	-0.187	1.156	0.919	0.081	1.064	1	Age-interaction
BAG_T1	WMR	0.775	0.001	1.551	0.976	0.024	0.402	1	Main effect
BAG_T1	Fat_ratio	-0.118	-0.89	0.641	0.383	0.617	2.451	1	Main effect
BAG_T1	Total_Adipose	0.088	-0.675	0.824	0.593	0.407	2.501	1	Main effect
BAG_T1	VAT_index	0.402	-0.317	1.188	0.85	0.15	1.53	1	Main effect
BAG_T1	Liver_fat	1.002	0.251	1.711	0.996	0.004	0.09	1	Main effect
BAG_T1	WHR	0.173	-0.232	0.602	0.794	0.206	3.4	1	Main effect
BAG_T1	BMI	-0.166	-0.55	0.205	0.195	0.805	3.472	1	Main effect
BAG_T1	MFI	0.917	0.118	1.663	0.989	0.011	0.168	1	Main effect
BAG_T1	TP:WMR	0.675	-0.076	1.402	0.962	0.038	0.569	1	TP-interaction
BAG_T1	TP:Fat_ratio	0.341	-0.34	1.029	0.832	0.168	1.717	1	TP-interaction
BAG_T1	TP:Total_Adipose	0.341	-0.359	1.041	0.832	0.168	1.791	1	TP-interaction
BAG_T1	TP:VAT_index	0.408	-0.31	1.146	0.865	0.135	1.493	1	TP-interaction

BAG_T1	TP:Liver_fat	0.532	-0.245	1.344	0.907	0.093	1.172	1	TP-interaction
BAG_T1	TP:WHR	0.5	0.104	0.919	0.991	0.009	0.302	1	TP-interaction
BAG_T1	TP:BMI	0.167	-0.22	0.554	0.803	0.196	3.346	1	TP-interaction
BAG_T1	TP:MFI	0.868	0.046	1.699	0.982	0.018	0.288	1	TP-interaction
BAG_T1	Age:WMR	0.999	0.201	1.818	0.992	0.008	0.131	1	Age-interaction
BAG_T1	Age:Fat_ratio	0.866	0.094	1.624	0.987	0.013	0.239	1	Age-interaction
BAG_T1	Age:Total_Adipose	0.762	0.007	1.459	0.98	0.02	0.339	1	Age-interaction
BAG_T1	Age:VAT_index	0.936	0.096	1.768	0.986	0.014	0.238	1	Age-interaction
BAG_T1	Age:Liver_fat	0.937	0.093	1.859	0.98	0.02	0.247	1	Age-interaction
BAG_T1	Age:WHR	0.683	0.29	1.076	1	0	0.01	1	Age-interaction
BAG_T1	Age:BMI	0.42	0.025	0.822	0.98	0.02	0.618	1	Age-interaction
BAG_T1	Age:MFI	1.034	0.201	1.828	0.993	0.007	0.119	1	Age-interaction



SI Figure 11. Network correlation graph. Showing correlations between adiposity measures and each BAG. The green lines indicate positive associations, and orange lines (none present) indicate negative associations. Strength of association marked by thickness of each line. Abbreviations: MFI – muscle fat infiltration; Fat – fat ratio; WHR – waist-to-hip ratio; VAT – visceral abdominal tissue index; WMR – weight-to-muscle ratio; Total A – total adipose; BMI – body-mass index; Liver – liver fat.



SI Figure 12. Time interactions. Interaction effects of waist-to-hip ratio and time on DTI BAG and T1 BAG, and muscle fat infiltration and time on T1 BAG. Models were fitted with BAGs as the dependent variable, adiposity measure as the independent variable (fixed effect), along with age, sex, with subject ID as random effects.