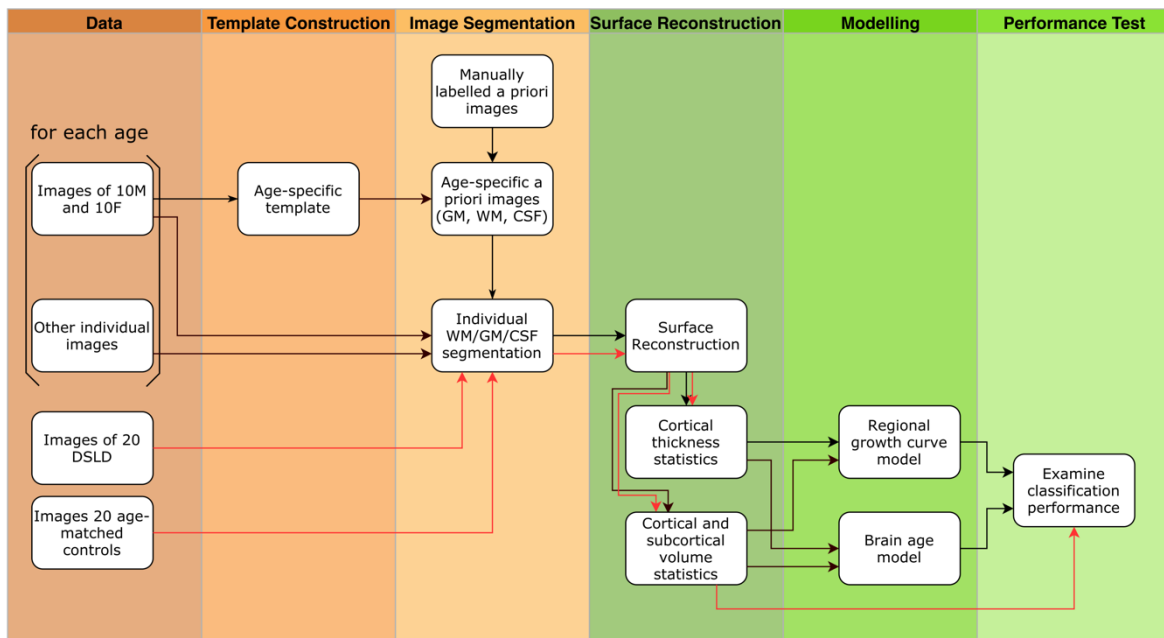
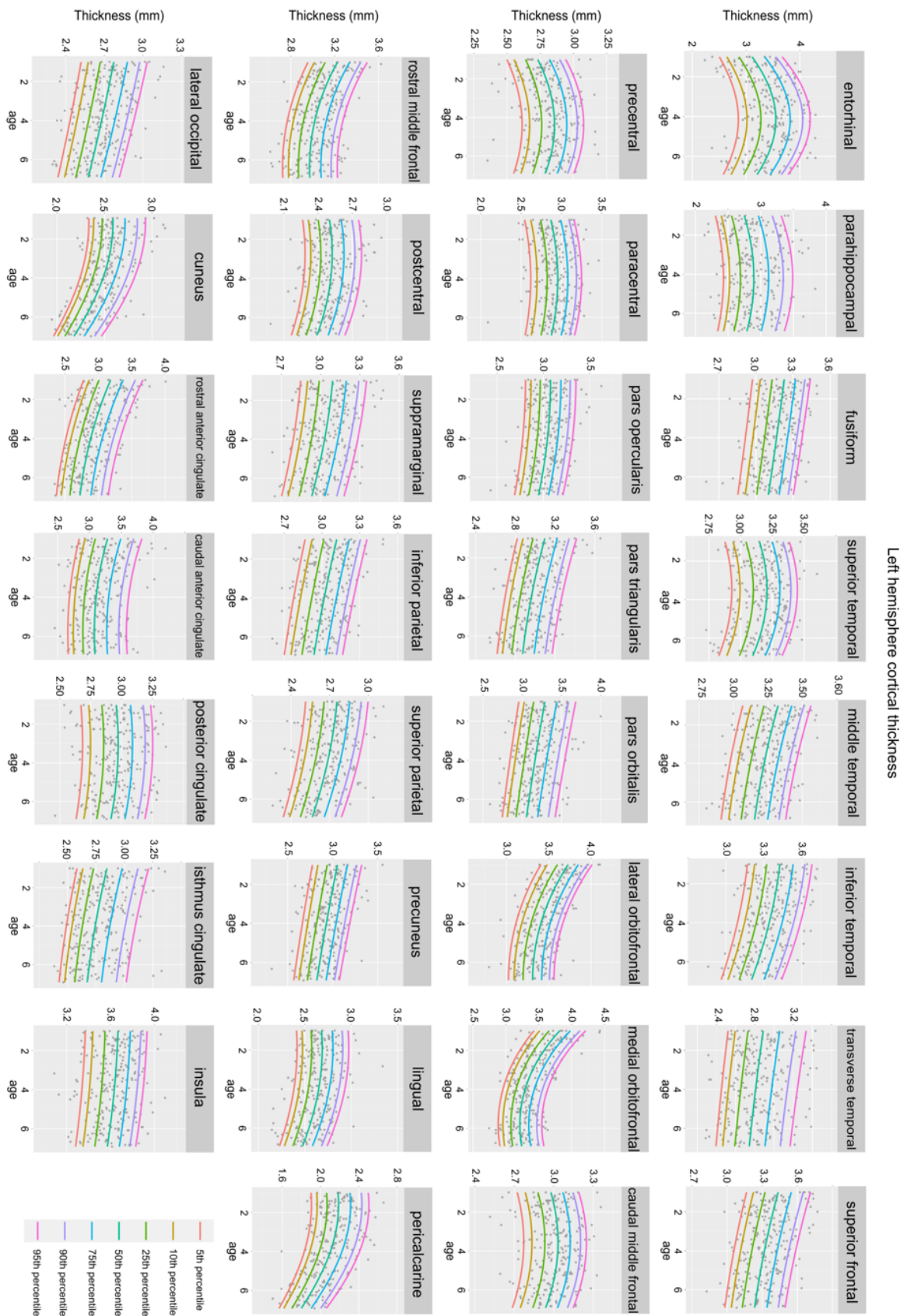


Supplementary Materials

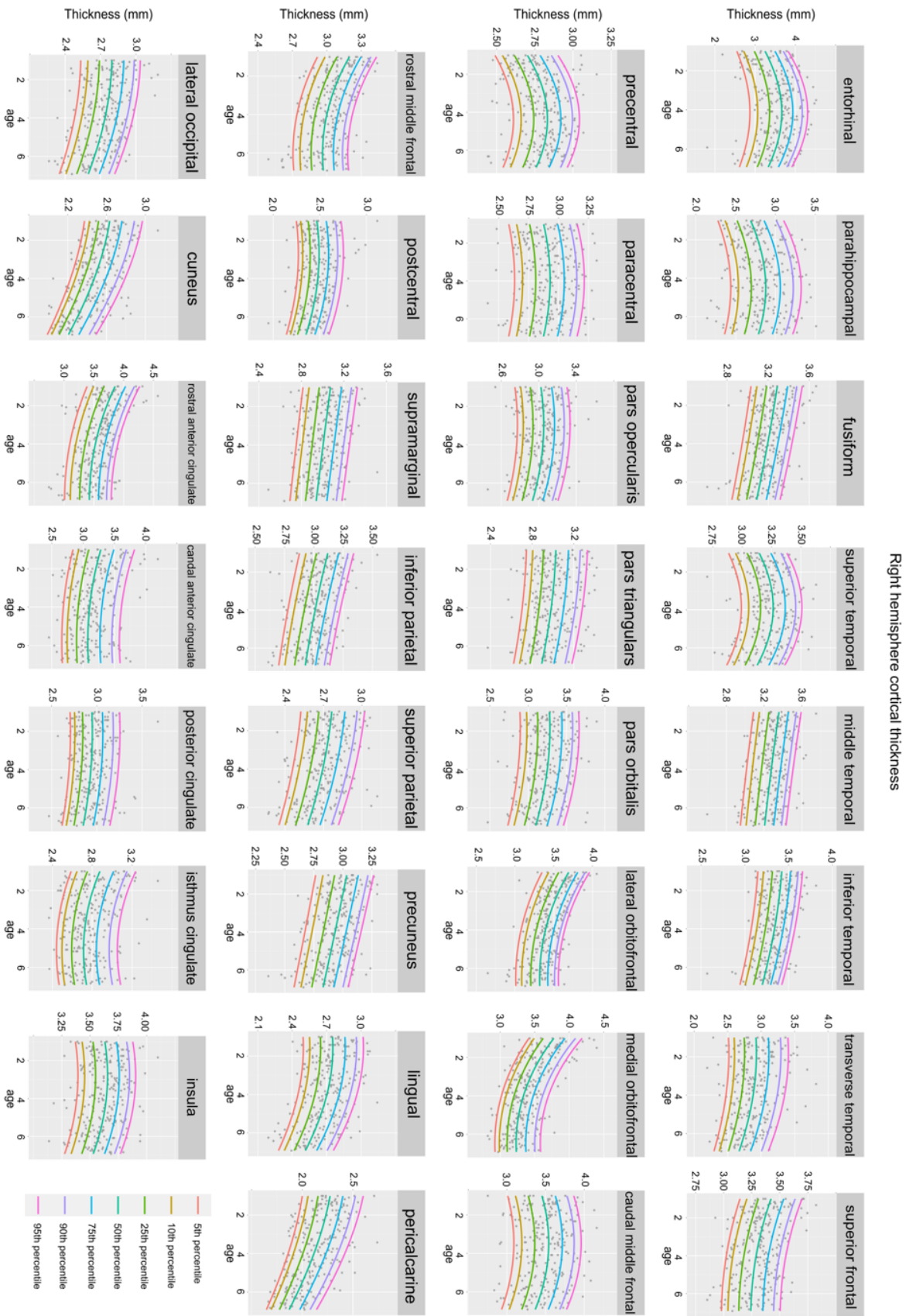
Supplementary Figure 1. A flowchart of the image processing pipeline. The pipeline consists of 5 steps, as represented by different color blocks, including template construction, image segmentation, surface reconstruction, modeling, and performance test. The black arrows depict the procedures to construct the normative growth curve model. The red arrows indicate the processes to evaluate the performance of the model to recognize developmental disorder individuals. To increase the accuracy of the “Individual WM/GM/CSF segmentation”, we build age-specific brain templates using ten male and ten female subjects in each age group and construct age-specific a priori images for segmentation. The customized individual tissue segmentation is then inserted into the Freesurfer pipeline to estimate cortical thickness and subcortical volumes. Based on these features, we construct regional growth curve models and train brain-age prediction models. The performance of these models to reveal brain development deficits is examined using an independent dataset.



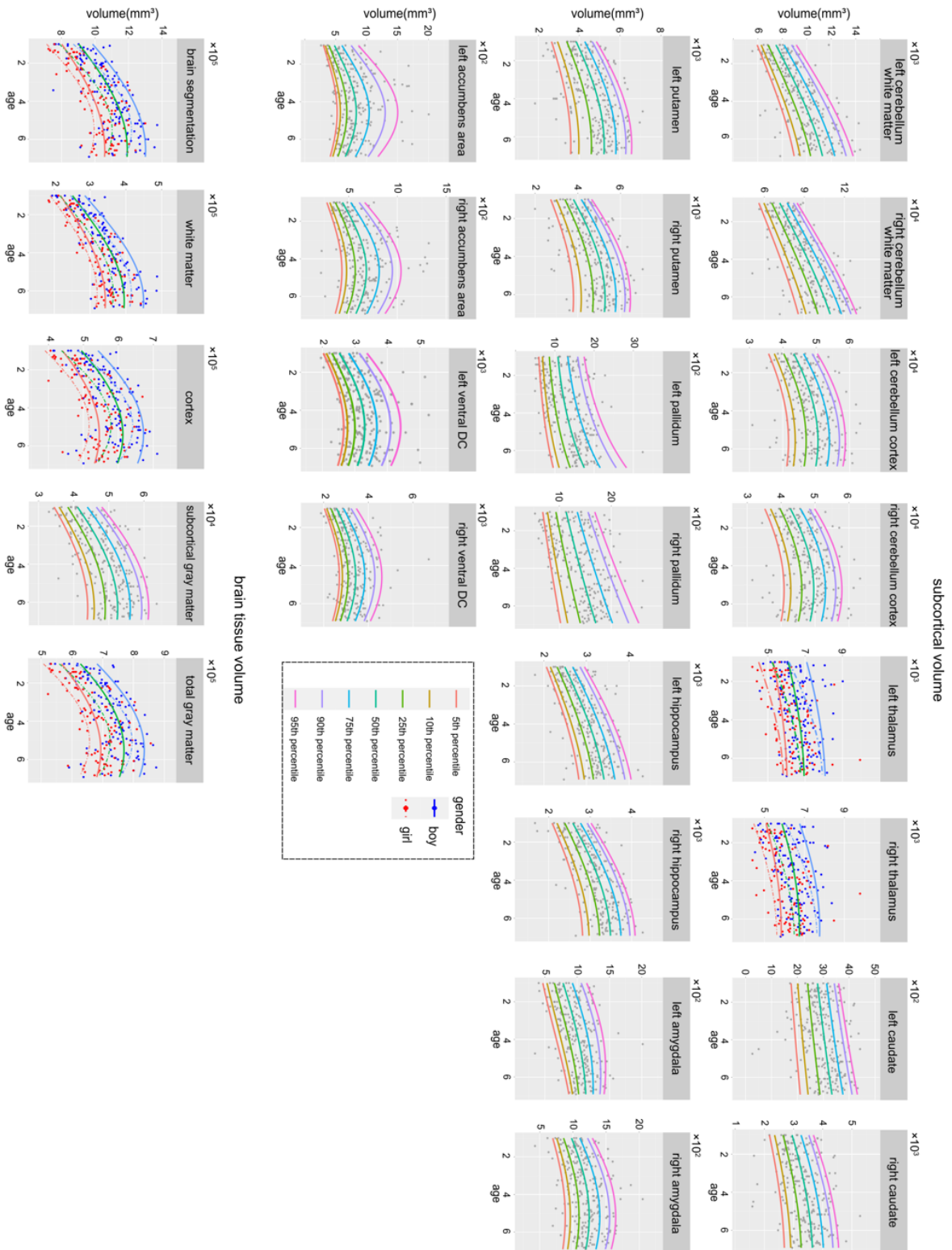
Supplementary Figure 2. Growth curve models of left hemisphere cortical regions



Supplementary Figure 3. Growth curve models of right hemisphere cortical regions



Supplementary Figure 4. Growth curve models of subcortical regions and brain tissues



Supplementary Table 1. Complaints of typically developing children scanned in 1.5T MRI

Complaints	Number of Males	Age of Male	Number of Females	Age of Female	Total Number
One episode of seizure	53	1-6.25	40	1-6.75	93
Headache	40	1.92-6.92	44	1.33-6.83	84
Physical examination	21	1.5-5.17	15	1.25-6.25	36
Dizziness	16	1-6.58	11	1.42-6.58	27
Facial paralysis	9	1-6.75	6	1.75-5.08	15
Trauma	5	2.5-5.75	0	-	5
Short-term fever of unknown	3	1-2	2	2.41-3.25	5
Total	135	1-6.92	110	1-6.83	265

Supplementary Table 2. Complaints of typically developing children scanned in 3T MRI

Complaints	Number of Males	Age of Male	Number of Females	Age of Female	Total Number
One episode of seizure	11	1.04-3.75	17	1.13-5	28
Headache	7	3.04-6.87	5	5.45-6.78	12
Physical examination	2	1.17-3.82	6	1.17-6.80	8
Dizziness	1	6.09-6.09	2	4.72-6.31	3
Facial paralysis	1	1.87-1.87	0	-	1
Short-term fever of unknown	0	-	3	1.48-2.85	3
Total	22	1.04-6.87	33	1.13-6.80	55

Supplementary Table 3. Age-dependence of brain tissues, stratified by sex

Age group	Statistics	Brain volume, excluding ventricles		Total gray matter volume		Total cortex volume		Total cerebral white matter volume	
		M	F	M	F	M	F	M	F
Age1	Mean ^a	921006	846052	641623	595331	507171	468799	263700	236739
	SD ^a	90264	64983	56498	40755	48412	36002	37271	24998
Age2	Mean ^a	1030867	927474	702509	638696	559802	504513	312542	273324
	SD ^a	75588	76178	47895	51885	47275	45242	32490	25441
	Change rate ^b	1.10	1.12	1.07	1.09	1.08	1.10	1.15	1.19
	t-val ^c	5.08***	3.71***	4.47***	2.99***	4.22***	2.81***	5.37***	4.69***
Age3	Mean ^a	1079276	1038915	730148	698590	580949	551940	340729	322632
	SD ^a	93707	83692	43914	51549	38224	48197	29431	34743
	Change rate ^b	1.23	1.17	1.17	1.14	1.18	1.15	1.36	1.29
	t-val ^c	2.14*	4.34***	2.27*	3.62***	1.86	3.16***	3.44***	5.04***
Age4	Mean ^a	1153792	1073595	764143	718080	608458	575960	371279	339398
	SD ^a	45589	85528	31608	54921	25363	52990	21394	34754
	Change rate ^b	1.27	1.25	1.21	1.19	1.23	1.20	1.43	1.41
	t-val ^c	3.62***	1.19	3.08***	1.06	2.97***	1.37	4.12***	1.40
Age5	Mean ^a	1163194	1101837	758841	725251	601626	580387	385438	359403
	SD ^a	100797	79164	60489	50705	56553	45774	43639	33780
	Change rate ^b	1.30	1.26	1.22	1.18	1.24	1.19	1.52	1.46
	t-val ^c	0.41	0.98	-0.38	0.39	-0.54	0.25	1.41	1.67
Age6	Mean ^a	1170756	1095470	756045	707478	601031	557665	396089	367898
	SD ^a	134124	78152	82877	51954	75113	44250	56588	33630
	Change rate ^b	1.29	1.27	1.19	1.18	1.19	1.19	1.55	1.50
	t-val ^c	0.19	-0.26	-0.12	-1.11	-0.03	-1.61	0.64	0.81

Note:

a. volume unit: mL;

b. change rate relative to age 1;

c. t values relative to the previous age-group; *** false discovery rate $q < 0.05$; ** $p < 0.01$; * $p < 0.05$.