

Long-Term Effects of Chronic Hemiparetic Stroke and Botulinum Neurotoxin on Wrist and Finger Passive Mechanical Properties

Benjamin I Binder-Markey^{1,2,3,4,5,6} DPT, PhD, Wendy M Murray^{3,4,5,6,7}, PhD, *Julius P.A. Dewald^{3,4,5} PT, PhD

¹Department of Physical Therapy and Rehabilitation Sciences, Drexel University, Philadelphia, PA

²School of Biomedical Engineering Science and Health Systems, Drexel University, Philadelphia, PA

³Department of Biomedical Engineering, Northwestern University, Evanston, IL

⁴Department of Physical Therapy and Human Movement Sciences, Northwestern University, Chicago, IL

⁵Department of Physical Medicine and Rehabilitation Science, Northwestern University, Chicago, IL

⁶Shirley Ryan Ability Lab, Chicago, IL

⁷Research Service, Edward Hines Jr., VA Hospital, Hines, IL

*Corresponding Author

*Julius PA Dewald, PT, PhD

645 N. Michigan Ave

Suite 1100

Chicago, IL 60611

Phone: (312) 908-6788

j-dewald@northwestern.edu

Key Words: Stroke, Joint Biomechanics, Hand, Botulinum Toxin, Muscle, Wrist

Publication history: This manuscript was previously published as a pre-print on MedRxiv
doi:doi.org/10.1101/19011312

Word Count: 4469

Figure Count: 4, 1 supplemental

Table Count: 2

32 **ABSTRACT**

33 **Background:** Neural impairments that follow hemiparetic stroke may negatively affect passive
34 muscle properties, further limiting recovery. However, factors such as hypertonia, spasticity, and
35 botulinum neurotoxin (BoNT), a common clinical intervention, confound our understanding of
36 muscle properties in chronic stroke.

37 **Objective:** To determine if muscle passive biomechanical properties are different following
38 prolonged, stroke-induced, altered muscle activation and disuse.

39 **Methods:** Torques about the metacarpophalangeal and wrist joints were measured in different
40 joint postures in both limbs of participants with hemiparetic stroke. First, we evaluated 27
41 participants with no history of BoNT; hand impairments ranged from mild to severe.
42 Subsequently, seven participants with a history of BoNT injections were evaluated. To mitigate
43 muscle hypertonia, torques were quantified after an extensive stretching protocol and under
44 conditions that encouraged participants to sleep. EMGs were monitored throughout data
45 collection.

46 **Results:** Among participants who never received BoNT, no significant differences in passive
47 torques between limbs were observed. Among participants who previously received BoNT
48 injections, passive flexion torques about their paretic wrist and finger joints were larger than
49 their nonparetic limb (average interlimb differences = $+42.0 \pm 7.6$ SEM Ncm, $+26.9 \pm 3.9$ SEM
50 Ncm, respectively), and the range of motion for passive finger extension was significantly
51 smaller (average interlimb difference = $-36.3^\circ \pm 4.5^\circ$ SEM; degrees).

52 **Conclusion:** Our results suggest that neural impairments that follow chronic, hemiparetic stroke
53 do not lead to passive mechanical changes within the wrist and finger muscles. Rather, consistent

Passive Hand Mechanics Post Stroke and BoNT

- 54 with animal studies, the data points to potential adverse effects of BoNT on passive muscle
- 55 properties post-stroke, which warrant further consideration.

56 ***INTRODUCTION***

57 Following a hemiparetic stroke, induced damage to corticofugal motor (i.e., corticospinal and
58 corticobulbar) pathways result in an increased reliance on indirect contralesional
59 corticoreticulospinal pathways.¹⁻⁵ This shift alters neural input to spinal motor neurons resulting
60 in motor impairments such as weakness,⁶⁻⁸ loss of independent joint control,⁹⁻¹³ and motor
61 neuron hyperactivity manifesting as hypertonia and spasticity (i.e., hyperactive stretch
62 reflexes).¹⁴⁻¹⁸ This altered motor drive and associated limb use, over time, may change muscle
63 structure and function, further amplifying the brain injury induced motor impairments.
64 Additionally, botulinum neurotoxin (BoNT) chemical denervation, widely used to treat muscle
65 hypertonia and spasticity,¹⁹⁻²¹ may also alter muscle.²²⁻²⁹ One particularly detrimental sequelae of
66 these muscle adaptations are that muscles can become increasingly stiff, making movement
67 progressively more difficult.

68 There is not a clear consensus regarding how prolonged exposure to altered neural inputs
69 following a stroke affect muscle structure and its associated passive mechanical properties.
70 Previous studies quantifying muscle adaptations following a stroke have demonstrated decreased
71 fascicle lengths,³⁰⁻³² often accompanied by increased joint torques and stiffness^{7,30,31,33-37}. Such
72 data has been interpreted as evidence of muscle contractures and mechanical property
73 adaptations. However, conflicting evidence also suggests that passive mechanical properties are
74 not different between the paretic and non-paretic limbs of stroke survivors.^{33,38}

75 Abnormal muscle hypertonia and spasticity increase the chance of muscle activity, even in
76 conditions intended to be “passive” or “relaxed”. Thus, conflicting results could be a
77 consequence of differences in how effectively abnormal muscle hyperactivity was controlled
78 among different studies. For example, some studies utilized continuous motion to collect passive

Passive Hand Mechanics Post Stroke and BoNT

79 torques.^{7,35,36} However, even low constant velocities elicit hyperactive stretch reflexes that
80 substantially increased paretic finger torques.⁸ In other studies, EMGs were not recorded to
81 confirm muscles were passive during data collection.^{30,38} Additionally, some methods involved
82 dynamic analytical models to decompose active torques and estimate passive torques from
83 muscle activity and EMGs estimated rather than directly measuring passive torques.^{7,34,36} Finally,
84 while pre-stretching attenuates hyperactive motoneurons and the stretch reflex,³⁹ few studies
85 discuss whether stretching prior to data collection was utilized.^{7,30,35,36,38} Such methodological
86 differences among previous studies obfuscate our understanding of muscle passive properties
87 following chronic stroke.

88 An additional confounding factor, neither discussed nor reported in the context of the
89 inclusion/exclusion criteria in previous studies, is the potential long term effects of BoNT. BoNT
90 chemical denervation is included in neurological clinical practice guidelines for treatment of
91 adult spasticity¹⁹; it is a common treatment for muscle hypertonia and spasticity¹⁹⁻²¹ within the
92 ~45% of stroke survivors who have spasticity.^{40,41} Presumably, the short term, BoNT-induced
93 reduction of muscle tone²⁰ improves function by increasing range of motion (ROM) and
94 reducing overall hypertonicity. Yet, evidence of these beneficial effects is limited and based
95 largely on acute, subjective clinical assessments of muscle tone and ROM without demonstrating
96 improvements in either active function or quality of life.^{21,42,43} In contrast, both acute and chronic
97 structural changes in rodent muscles have been observed following BoNT injections, including
98 increased intramuscular connective tissue and passive mechanical stiffness.^{22-26,28,29} If BoNT
99 administration imposes the same effects within human muscle, it is critical to understand both
100 how these structural changes are distinct from stroke-induced alterations and the extent to which
101 the induced structural changes may effect optimal functional recovery.

102 The overall objective of this study is to determine the extent to which muscle passive
103 biomechanical properties in the paretic limb differ from non-paretic limb given prolonged,
104 stroke-induced, altered muscle activation and use; as well as potential long-term effects of
105 BoNT administration. To do so, we compared the passive torques collected about the paretic and
106 non-paretic wrist and finger joints of individuals with chronic hemiparetic stroke, while
107 controlling for muscle hyperactivity and accounting for BoNT use. We chose to study wrist and
108 finger muscles because they are affected by the longest lasting and most severe motor
109 impairments following a stroke⁴⁴⁻⁴⁷ and are a frequent site of BoNT treatment. To evaluate the
110 long term effects of stroke-induced neural impairments, we recruited individuals with mild to
111 severe hand impairments with no history of BoNT injections. To understand long-term effects of
112 BoNT, and resulting chemical denervation, we recruited additional chronic stroke participants
113 with a history of BoNT treatment. Based on the prevailing findings of previous literature and the
114 common clinical presentation of stiff, flexed wrists and fingers in the paretic limb following
115 stroke, our primary hypothesis is that passive torques in the paretic hand are greater than the non-
116 paretic hand.

117

118 ***MATERIALS AND METHODS***

119 ***Participants***

120 The Clinical Neuroscience Research Registry from Northwestern University and the Shirley
121 Ryan Ability Lab was used to pre-screen individuals with chronic hemiparetic stroke based on
122 set inclusion/exclusion criteria (Table 1). 105 individuals whose registry-based, prior clinical
123 assessments of upper limb impairment fit the screening criteria were contacted; 68 individuals
124 responded. In this screening (no-BoNT), previous history of BoNT injections in their arms was

Passive Hand Mechanics Post Stroke and BoNT

125 an exclusion criteria. After registry-based stratification into different impairment levels (mild,
126 moderate, and severe) and further verification that inclusion/exclusion criteria were met 39
127 individuals were invited; 28 agreed to participate and were enrolled. Once enrollment of the no-
128 BoNT participants was complete, we contacted 23 individuals with a previous history of BoNT
129 injections. Eleven individuals met our enrollment criteria for the BoNT-injected group; 10 were
130 enrolled. Each of these participants received BoNT injections within their forearm flexor
131 compartment. A single enrollee in the BoNT group was subsequently excluded due to also
132 having received BoNT injections in the forearm extensor compartment. The 9 remaining
133 individuals were at least one year post-BoNT injection. After testing was completed on all
134 enrolled participants, the data from three additional enrollees (2, BoNT-injected; 1, no-BoNT)
135 were excluded from the analysis due to the inability to relax during testing, as determined by
136 EMG activity.

137 Enrolled study participants were ultimately stratified by hand impairment using the Chedoke
138 McMaster Stroke Assessment Hand Score (CMSA-HS)⁴⁸, administered at the time of testing by a
139 licensed physical therapist (Table 2). Severe impairments were defined as CMSA-HS scores of
140 1-3 (n=9 no-BoNT; n=7 BoNT-injected), moderate impairments as 4-5 (n=9 no-BoNT), and mild
141 impairments as 6-7 (n=9 no-BoNT). Clinical scores (both CMSA-HS and Modified Ashworth
142 Scale (MAS)) for all 7 participants with a history BoNT injections indicated severe impairment;
143 scores were not significantly different ($p=0.196$, $p=0.158$, respectively) from those with severe
144 impairments and no history of BoNT (Table 2). Demographic data were gathered from all
145 participants prior to data collection.

146 Initial enrollment targets (n = 9 per group: no-BoNT mild, moderate, severe, and BoNT-
147 injected) were defined to surpass the conditions needed to detect a large effect size (Cohen's $d =$

148 1.1), based on a priori power analyses of a one-tailed, within-subject t-test for the hypothesis that
149 passive torques in the paretic limb are greater than the non-paretic limb. Due to the lack of
150 appropriate passive torque data, we powered the study based on the detectable interlimb
151 differences in the passive range of motion limits for MCP extension. Specifically, Cohen's d was
152 calculated from the angular resolution of the device used to measure MCP torque (15°) and
153 intersubject variability at the limit of MCP extension in nonimpaired participants.⁴⁹ The analysis
154 indicated that with our large, standardized effect size, a power of 0.8 would be achieved with $\alpha =$
155 0.05 and 7 participants.⁵⁰ With the same assumptions, an a priori power analysis for one-way
156 (between groups) ANOVA indicated that a total of 16 participants were needed.⁵⁰ The total
157 participant numbers for the results presented here ($n = 34$) are more than double the total
158 specified via the a priori ANOVA analysis. Participant numbers within each of the 4 distinct
159 groups either meet or exceed the number specified via the a priori analysis for a single t-test ($n =$
160 7).

161 The study protocol was developed in compliance with the Declaration of Helsinki and
162 approved by the Institutional Review Board (IRB) of Northwestern University (IRB Study:
163 STU00203691). Participants gave informed consent prior to participation and all patients signed
164 a Patient Consent-to-Disclose form prior to any images being taken.

165 ***Experimental Set-up***

166 A custom built device⁵¹ was used to collect torques produced about the wrist and fingers. The
167 device allows the experimenter to position the wrist and metacarpophalangeal (MCP) joints
168 separately, in discrete 15° increments, while simultaneously collecting torques about each joint.
169 Participants were seated in an upright position with their hand secured in the device. The
170 participant's arm was positioned comfortably at their side with the forearm parallel to the ground

171 and palm facing medially. The two distal finger joints were splinted. Muscle activity was
172 monitored throughout each trial using surface electrodes (16-channel Bagnoli EMG System,
173 Delsys Inc., Boston, MA; 1000 x gain, 20-450 Hz bandpass) placed over 4 muscles; Flexor
174 Digitorium Superficialis, Flexor Carpi Ulnaris, Extensor Digitorium Communis, and Extensor
175 Carpi Radialis Longus.

176 ***Muscle Hyperactivity Inhibition Protocol***

177 Muscle hyperactivity was reduced and quieted during data collection by providing conditions
178 that encouraged participants to sleep. This relaxed state reduces reticulospinal tract activity
179 resulting in decreased spinal motoneurons excitability and muscle hyperactivity.⁵²⁻⁵⁴ We
180 encouraged sleep by creating a dark atmosphere and playing relaxing videos or music. Each
181 session began with 10-15 minutes of stretching of the shoulder, elbow, wrist, and fingers
182 muscles. Participants were then positioned into the device. The lights were turned off, the video
183 or music was turned on, and these conditions remained in effect for the remainder of the
184 protocol. An additional 10 minutes of 90 second sustained stretches of the wrist and fingers
185 muscles were performed, accomodating the individual to the device. Decreases in EMG activity
186 and measured torques were observed at this point (Figure 1). The device's MCP and wrist
187 restraints were unlocked, allowing the wrist and fingers to move and rest at their equilibrium
188 postures. Three 15-second baseline trials with no evidence of EMG activity were then collected
189 to zero the device and define passive EMG baseline.

190 ***Experimental Procedure***

191 The protocol for each limb was completed on two consecutive days, if possible. Data
192 collection took four to six hours per limb. Data from the non-paretic hand was collected on the

193 first day to acclimate the individual to the procedure. Because of the sensitive nature of muscle
194 hyperactivity in the paretic limb, we felt the benefits of testing that limb after the participant was
195 fully comfortable with the full protocol and able to maximally relax outweighed any costs
196 associated with not randomizing for limb across days. Passive torques were collected from a
197 maximum of 108 combinations of wrist and MCP joint postures, depending on the individual
198 participant's available ROM. MCP and wrist ROM were determined within the device; we
199 recorded the largest 15° increment reached for each degree of freedom. The most extreme
200 postures that could be reached by each participant within the device were determined by the
201 individual's comfort level or the device's limits.

202 Torques were collected at static postures. Wrist posture was randomly set in 15° increments
203 between 60° of flexion and 60° of extension (9 wrist postures). One participant (BoNT-injected)
204 had limited wrist extension in the paretic limb, and could only be positioned in 6 postures. At
205 each wrist posture, the MCP joints were positioned in full extension, moved to full flexion, and
206 then moved back to full extension in static 15° increments. At each static posture, data were
207 collected for 15 seconds and visually inspected. Trials for which there was clear evidence of
208 muscle activity and corresponding torque deviations during testing were discarded and repeated.

209 ***Data processing***

210 Raw torque and EMGs were collected and digitized (CED Micro 1401 MkII, Cambridge
211 Electronic Design, Cambridge, UK) at a 1 kHz sampling frequency using Spike2 software
212 (Cambridge Electronic Design, Cambridge, UK). The torque and rectified EMG data were then
213 digitally filtered using a zero-phase infinite impulse response 4th-order Butterworth low-pass
214 filter with a 4Hz corner frequency within MATLAB.

215 The processed baseline trials defined the torque offset and EMG threshold. Torque offset was
216 defined as the average torque measured during the three baseline trials. EMG threshold, EMG_t ,
217 was defined as:

$$218 \quad EMG_t = \bar{x}_{EMG_base} + 3 \cdot \sigma_{EMG_base}$$

219 where \bar{x}_{EMG_base} is the average of the three EMG baseline trials and σ_{EMG_base} is the average
220 EMG standard deviation over the three baseline trials.

221 For each static trial (i.e., the torque produced in a single combination of wrist and MCP joint
222 positions), the processed torque and EMG data were divided into 1-second bins, resulting in 15
223 bins per trial. The average torque and EMG values were first calculated for each of the 15 bins.
224 For a given 1-second bin in any trial, if the average EMG signal from any muscle
225 exceeded EMG_t or if the torque deviated $\geq 5\%$ from the mode across the entire trial, the bin was
226 discarded. The average of the remaining bins within each trial were used to create the total
227 torque versus wrist and MCP posture data set for each subject.

228 Differences in torques between limbs were calculated by subtracting non-paretic torque from
229 paretic torque at each posture. Differences in MCP extension passive ROM (ePROM) between
230 hands were calculated at each wrist posture. When data were missing or discarded, the difference
231 was only calculated for postures where data was available in both paretic and non-paretic hands.

232 ***Data Analysis***

233 To test our primary hypothesis that passive torques in the paretic hand are greater than the
234 non-paretic hand within each group (severe BoNT-injected, severe no-BoNT, moderate, and
235 mild), we compared the differences between the participants' paretic and non-paretic hands for
236 MCP joint torques and wrist joint torques. Secondly, we compared torque differences across
237 groups and evaluated the interlimb differences for ePROM across all wrist postures. A distinct

238 linear-mixed model (LMM) was implemented in SPSS (v26.0 IBM Corp Armonk, NY) for each
239 parameter of interest (i.e., 3 models). LMMs allow for within-participant experimental designs
240 by correcting for repeated measurements within participants while allowing for missing data
241 points.⁵⁵

242 When interlimb difference in MCP or wrist torques was the dependent variable, the linear-
243 mixed model fixed effects included group, MCP position, wrist position, and their interactions.
244 When interlimb difference in ePROM was the dependent variable, fixed effects included group,
245 wrist position, and their interaction. An intercept random effect for participant was included in
246 all models to account for random differences across participants.

247 Within each of the 4 impairment groups, post-hoc t-tests were used to test if the within-
248 subject, interlimb torque differences were significantly different from zero. Significance was
249 calculated using the T.DIST.RT function in Microsoft Excel (2020); inputs were the ratio of the
250 marginal mean and standard error for each group and the degrees of freedom, all outputs from
251 the LMM model in SPSS. To determine between group differences, post-hoc pairwise
252 comparisons among the groups were performed. Significance of the pairwise comparisons were
253 also calculated using the T.DIST.RT Excel function and outputs from the LMM models. To
254 maintain $p < 0.05$ as threshold of significance globally, the threshold for individual t-tests in the
255 post-hoc analyses was reduced using the Bonferroni correction for multiple comparisons to
256 $p = 0.005$ ($p = 0.05/10$). Across each dependent variable there were 10 post-hoc comparisons: the
257 within-subject, different from zero comparison for each of the 4 groups, and 6 between group
258 comparisons. Results are reported as average \pm one standard deviation unless otherwise noted.
259 Finally, to assess whether the differences in observed, mean, within-subject interlimb differences

260 met our a priori assumptions, we calculated the Cohen's d effect size achieved for each
261 combination of wrist and MCP joint posture from the experimental data.

262 ***Data availability***

263 The data sets used within this analysis are available by request from the authors.

264

265 ***RESULTS***

266 ***Passive Torque about the Wrist and MCP joints***

267 Interlimb differences in MCP joint torques were small and were not significantly different for the
268 mild ($p=0.188$), moderate ($p=0.046$), or severe ($p=0.017$) impairment groups without a history
269 of BoNT injections (cf., rows 1-3, Fig. 2a, $p<0.005$ is the threshold for significance for post-hoc
270 t-tests). In contrast, the BoNT-injected group had significantly greater MCP joint torques in their
271 paretic versus non-paretic hands (Fig. 2; $p=5.83\times 10^{-8}$). The observed effects in interlimb
272 differences for the the BoNT group were consistent with the large effect sizes (Cohen's $d = 1.1$)
273 we powered the study to detect. For example, the average of the achieved standardized effect
274 size for all postures was 1.24 ± 1.09 (range = 0.10-8.64), with effect sizes generally increasing
275 with wrist and MCP extension. Effect sizes observed for interlimb MCP torque differences for
276 the impairment groups without a history of BoNT were smaller, with mean Cohen's d across all
277 postures of 0.77 ± 1.2 , 0.49 ± 0.33 , and 0.47 ± 0.63 for the severe, moderate, and mild groups,
278 respectively. Interlimb differences in MCP torque increased with wrist and MCP extension for
279 the BoNT group only (Fig 2b). The interlimb difference in MCP torques observed in the BoNT
280 group were significantly greater than each no-BoNT group ($p < 4.47\times 10^{-4}$ for all, Fig. 2b)

281 Passive torques at the wrist replicated the findings at the MCP joints. Specifically,
282 significant differences in passive wrist torques between limbs were only observed in the BoNT

283 group ($p = 4.51 \times 10^{-6}$; Fig. 3a). The distinction in standardized effect sizes observed in the BoNT
284 group compared to the 3 no-BoNT groups was even greater for wrist torques than for MCP
285 torques. The average, achieved standardized effect size (Cohen's d) for interlimb wrist torque
286 differences across all postures was 1.65 ± 1.28 (range = 0.35-8.38) for the BoNT group compared
287 to 0.30 ± 0.35 , 0.33 ± 0.25 and 0.32 ± 0.34 for the mild, moderate, and severe no-BoNT groups,
288 respectively. Between groups, the interlimb difference in wrist torques observed in the BoNT
289 group was significantly greater than each of the no-BoNT groups ($p < 2.10 \times 10^{-3}$ for all; Fig. 3b).

290 *Impact on Passive Range of motion*

291 In general, the observed effects for passive MCP extension ROM in the three no-BoNT
292 groups were small, especially when compared to the BoNT group. For the severe and mild no-
293 BoNT groups, the passive limits of MCP extension were not significantly different between
294 limbs; with ePROM differences of $-3.15^\circ \pm 19.02^\circ$ ($p=0.216$) and $2.47^\circ \pm 9.12^\circ$ ($p=0.274$) and
295 standardized effect sizes of 0.24 ± 0.23 and 0.30 ± 0.24 averaged across the 9 wrist postures tested,
296 respectively. For the moderate no-BoNT group, the limit of passive MCP extension was
297 $12.0^\circ \pm 3.9^\circ$ less extended in the paretic limb than the non-paretic limb ($p = 2.18 \times 10^{-3}$), a
298 significant interlimb difference that was on the same order as the measurement resolution for
299 ePROM in this study (15°). In contrast, for the BoNT-injected group, the interlimb difference in
300 ePROM across all wrist angles was much larger ($-36.3^\circ \pm 4.5^\circ$; $p=1.94 \times 10^{-9}$).

301

302 *DISCUSSION*

303 The main objective of this study is to determine the extent to which the prolonged changes in
304 neural input and muscle use experienced by individuals with a chronic hemiparetic stroke are
305 associated with differences in muscle passive biomechanical properties between limbs. To this

Passive Hand Mechanics Post Stroke and BoNT

306 purpose, we evaluated a cohort of 27 individuals with chronic hemiparetic stroke, with no history
307 of BoNT injections, spanning mild to severe hand impairments and an additional 7 individuals
308 who had previously received BoNT injections, all with severe hand impairments. Our primary
309 hypothesis was that passive torques in the paretic hand are greater than in the non-paretic hand.
310 Strikingly, in the participants without BoNT, we did not observe significant interlimb passive
311 torque differences at either the wrist or the MCP joints. Importantly, we powered the study to
312 detect large effect sizes, and the significant results observed for the BoNT group demonstrate
313 that we did enroll sufficient participant numbers to detect the large standardized effect sizes we
314 expected to observe. However, the standardized effect sizes observed in the no-BoNT groups
315 were much smaller than we anticipated. Overall, the small absolute magnitude of the interlimb
316 torque differences (c.f. Figs 2b & 3b) paired with the small absolute magnitude of interlimb
317 ePROM differences observed (c.f. Fig 4) among the no-BoNT groups suggest that the observed
318 torque differences in the paretic limb are not a critical impediments to passive ROM after a
319 stroke.

320 Unlike many previous studies following chronic hemiparetic stroke,^{7,30,31,33-37} we did not
321 observe greater passive torques in the paretic limb among the participants who had never
322 received BoNT. Most of the previous studies evaluated lower extremity (ankle)^{30,31,33,34,37} or
323 more proximal (elbow)^{33,35} joints; we studied distal wrist and finger joints. Following a stroke,
324 the loss of corticospinal projections has a significantly greater impact on distal wrist and finger
325 function than more proximal upper extremity joints.⁵⁶ By replacing corticospinal drive with the
326 indirect corticoreticulospinal system there is a significant neuromodulatory effect on spinal
327 motoneurons due to greater release of monoamines (serotonin and norepinephrine) in the spinal
328 cord.⁵⁷ This increase of monoamines causes motoneuron hyperexcitability and increased

Passive Hand Mechanics Post Stroke and BoNT

329 involuntary muscle activation or hypertonia, which especially effects the distal wrist and finger
330 muscles.^{15,57,58} This increased hypertonia and continuous activation may cause greater
331 impairments of these more distal muscles during movement but it also may serve a protective
332 effect on the muscle structure preventing significant atrophy and passive mechanical changes.
333 This is an area that should be further explored and is currently under investigation within our lab.

334 Another factor contributing to the differences between our study and previous studies is
335 the great care we took to reduce muscle hyperactivity during data collection. Inconsistencies
336 between our results and previous studies may underscore the importance of this factor.
337 Especially at the wrist and fingers, simple instructions to relax are likely insufficient. Many
338 individuals with chronic stroke are unable to fully relax while awake due to reticulospinal
339 mediated motoneuron hyperexcitability and muscle hypertonia. Decreasing hypertonia of
340 muscles may require a significant reduction in corticoreticulospinal tract activity,⁵²⁻⁵⁴ that we
341 addressed by encouraging participants to sleep during testing. A decrease in muscle activity was
342 observed during test preparations (Figure 1), activity levels were strictly monitored throughout
343 data collection. These critical steps should be considered when attempting to quantify passive
344 muscle mechanics *in vivo* within any future study within a “spastic” population.

345 This study is also unique because we explicitly stratified participants based on prior
346 clinical history of BoNT. Clinically, BoNT injections are frequently administered to alleviate
347 muscle hyperactivity or hypertonia within the wrist and finger muscles. Approximately 45% of
348 stroke survivors have spasticity^{40,41} and BoNT is the preferred treatment for decreasing muscle
349 hyperactivity and increasing ROM. Each of our participants’ final BoNT injection was at least
350 four years prior to our data collection (Table 2). Within our BoNT-injected group, we observed
351 interlimb torque differences that were significantly larger than those observed in the no-BoNT

352 groups. The BoNT-injected group was also the only group where we observed interlimb torque
353 differences that systematically increased with wrist and MCP extension (Figures 2b & 3b).
354 Extended postures lengthen the wrist and finger flexor muscles, which are the muscles that were
355 injected with BoNT. Thus, our results suggest the possibility of a long lasting negative effect of
356 BoNT: substantially increased passive muscle stiffness.

357 The increased passive joint torques we observed in the paretic limb in the BoNT group
358 was also associated with substantial deficits in passive MCP extension relative to the nonparetic
359 limb (Figure 4). This chronic limitation in ROM contrasts with acute increases in passive ROM,
360 observed 1-2 months following BoNT injection.⁵⁹ Importantly, the deficits in passive ROM we
361 observed likely underestimate the extent that active ROM would be affected. We would expect
362 even larger losses in active ROM as active finger extensor strength decreases by as much as
363 90%⁶⁻⁸ and therefore would likely be unable to overcome the increased passive torques about the
364 fingers.

365 Previous animal studies demonstrate increased collagen content in the muscle following
366 BoNT injections; these increases were observed within 6 months and lasted the animal's
367 lifespan.^{22,23,26} The underlying mechanism of this increased collagen content is unknown.
368 Because BoNT chemically denervates a muscle the resulting adaptation may be similar to
369 traditional muscle denervation. Denervated muscle has been shown to demonstrate increases in
370 collagen content within a month after denervation^{60,61} and a recent study comparing muscle
371 treated with BoNT and a denervated muscle demonstrated similar patterns of progressive atrophy
372 and collagen content increases (Richard L. Lieber, personal communication of unpublished data,
373 2019). If BoNT is going to continue to be the 'go to' treatment for muscle hypertonia, further

374 studies into the mechanism by which BoNT affects muscle are necessary to enhance our
375 understanding of its long-term effects and to optimize recovery post stroke.

376 Because we quantified joint properties, we are unable to discern how mechanisms at the
377 muscle level, such as atrophy (loss of contractile material), adaptations of muscle extra-cellular
378 matrix (ECM), tendon compliance, or their combination) contribute to our results. In general, no
379 study quantifying joint properties can distinguish between effects due to adaptations in muscle
380 architecture, ECM, or tendon compliance. Future work could incorporate muscle imaging and
381 tissue analyses to further quantify the impact of potential muscle volume and structural changes.

382 Another important limitation of this study is that it is a cross-sectional study. While we
383 report striking differences between interlimb differences in passive joint torques and the range of
384 motion between the BoNT group and the no-BoNT groups, our data does not establish causality
385 between the BoNT injections and increased muscle or joint stiffness. Similarly, because this is
386 not a prospective, longitudinal study we are not reporting observations of adaptations in chronic
387 stroke muscle over time. Despite these limitations, the within subject control provided by the
388 non-paretic limb provides a valuable comparison in our retrospective study.

389 Finally, based on our a priori expectations for interlimb differences, we powered the
390 study to detect changes of large effect sizes. For the participants in our study without a previous
391 history of BoNT, we generally observed effects that were smaller than our expectations. The data
392 we present here could be leveraged to design future studies that would allow more robust
393 statistical conclusions about such smaller effects. In general, despite this limitation, the smaller
394 effects we observed lead us to conclude that the passive torque differences we observed in the
395 parietic limb did not substantially limit passive ROM in these participants.

396 **CONCLUSIONS**

397 To the best of our knowledge, the current study is the most thorough investigation of *in*
398 *vivo* passive elastic torques at the hand in the chronic hemiparetic stroke population. Our
399 findings indicate that, after stroke, prolonged altered use and neural inputs to muscle do not
400 substantially increase or negatively impact the passive torques about either the wrist or fingers,
401 nor significantly limit passive extension at the fingers, unless an individual has received BoNT.
402 This suggests that clinically observed stiffness and loss of ROM is likely due to either neurally
403 driven muscle hypertonia or long-term detrimental increases in muscle stiffness following BoNT
404 injections. Additionally, this provides further evidence that in the absence of mechanical muscle
405 alterations, the loss of hand function post-stroke is primarily due to weakness from voluntary
406 activation deficits⁶ and impaired control of the muscles of the hand^{11,56} following disruptions of
407 corticofugal motor pathways.^{62,63} Future rehabilitation techniques should therefore focus on
408 motor deficits post stroke to achieve improved hand function rather than preventing passive
409 mechanical changes. Additionally, the potential adverse effects of BoNT that our data highlights
410 should be explored to determine if the positive effects of reduced muscle hypertonia and
411 spasticity outweigh potential negative side effects of increased muscle stiffness in order to
412 maximize recovery of individuals following a hemiparetic stroke.

413

414 **ACKNOWLEDGEMENTS**

415 We especially want to thank Dr. Arno Stienen and Paul Krueger for their assistance with the
416 custom device design and modification, and Vikram Darbhe for his assistance in experimental
417 set-up and data collection

418

419 ***FUNDING SOURCES***

420 Promotion of Doctoral Studies Level II Scholarship from the Foundation for Physical Therapy,
421 American Heart Association Pre-Doctoral Fellowship: 16PRE30970010, National Institutes of
422 Health (NIH) T32EB009406 to J.P.A.D., and NIH Grant R01HD084009 to J.P.A.D. and W.M.M
423

424 ***COMPETING INTERESTS***

425 Drs. Binder-Markey, Murray & Dewald report no disclosures, competing interests, or conflicts of
426 interest.

427

428

429 **REFERENCES**

- 430 1. Baker SN, Zaaimi B, Fisher KM, Edgley SA, Soteropoulos DS. Pathways mediating
431 functional recovery. *Prog Brain Res.* 2015;218:389-412.
- 432 2. Zaaimi B, Edgley SA, Soteropoulos DS, Baker SN. Changes in descending motor pathway
433 connectivity after corticospinal tract lesion in macaque monkey. *Brain.* 2012;135(Pt
434 7):2277-2289.
- 435 3. Ellis MD, Drogos J, Carmona C, Keller T, Dewald JP. Neck rotation modulates flexion
436 synergy torques, indicating an ipsilateral reticulospinal source for impairment in stroke.
437 *J Neurophysiol.* 2012;108(11):3096-3104.
- 438 4. McPherson JG, Chen A, Ellis MD, Yao J, Heckman CJ, Dewald JPA. Progressive
439 recruitment of contralesional cortico-reticulospinal pathways drives motor impairment
440 post stroke. *J Physiol.* 2018;596(7):1211-1225.
- 441 5. Karbasforoushan H, Cohen-Adad J, Dewald JPA. Brainstem and spinal cord MRI identifies
442 altered sensorimotor pathways post-stroke. *Nat Commun.* 2019;10(1):3524.
- 443 6. Hoffmann G, Conrad MO, Qiu D, Kamper DG. Contributions of voluntary activation
444 deficits to hand weakness after stroke. *Top Stroke Rehabil.* 2016;23(6):384-392.
- 445 7. Kamper DG, Fischer HC, Cruz EG, Rymer WZ. Weakness is the primary contributor to
446 finger impairment in chronic stroke. *Arch Phys Med Rehabil.* 2006;87(9):1262-1269.
- 447 8. Kamper DG, Harvey RL, Suresh S, Rymer WZ. Relative contributions of neural
448 mechanisms versus muscle mechanics in promoting finger extension deficits following
449 stroke. *Muscle Nerve.* 2003;28(3):309-318.
- 450 9. Dewald JP, Pope PS, Given JD, Buchanan TS, Rymer WZ. Abnormal muscle coactivation
451 patterns during isometric torque generation at the elbow and shoulder in hemiparetic
452 subjects. *Brain.* 1995;118 (Pt 2):495-510.
- 453 10. Dewald JP, Sheshadri V, Dawson ML, Beer RF. Upper-limb discoordination in hemiparetic
454 stroke: implications for neurorehabilitation. *Top Stroke Rehabil.* 2001;8(1):1-12.
- 455 11. Miller LC, Dewald JP. Involuntary paretic wrist/finger flexion forces and EMG increase
456 with shoulder abduction load in individuals with chronic stroke. *Clin Neurophysiol.*
457 2012;123(6):1216-1225.
- 458 12. Sukal TM, Ellis MD, Dewald JP. Shoulder abduction-induced reductions in reaching work
459 area following hemiparetic stroke: neuroscientific implications. *Exp Brain Res.*
460 2007;183(2):215-223.
- 461 13. Brunnstrom S. *Movement therapy in hemiplegia: a neurophysiological approach.* 1st ed.
462 New York,: Medical Dept.; 1970.
- 463 14. Kamper DG, Rymer WZ. Quantitative features of the stretch response of extrinsic finger
464 muscles in hemiparetic stroke. *Muscle Nerve.* 2000;23(6):954-961.
- 465 15. McPherson JG, Ellis MD, Heckman CJ, Dewald JP. Evidence for increased activation of
466 persistent inward currents in individuals with chronic hemiparetic stroke. *J*
467 *Neurophysiol.* 2008;100(6):3236-3243.
- 468 16. McPherson JG, Stienen AH, Drogos JM, Dewald JP. Modification of Spastic Stretch
469 Reflexes at the Elbow by Flexion Synergy Expression in Individuals With Chronic
470 Hemiparetic Stroke. *Arch Phys Med Rehabil.* 2017.

- 471 17. Bhadane MY, Gao F, Francisco GE, Zhou P, Li S. Correlation of Resting Elbow Angle with
472 Spasticity in Chronic Stroke Survivors. *Front Neurol.* 2015;6:183.
- 473 18. O'Dwyer NJ, Ada L, Neilson PD. Spasticity and muscle contracture following stroke.
474 *Brain.* 1996;119 (Pt 5):1737-1749.
- 475 19. Lee JM, Gracies JM, Park SB, Lee KH, Lee JY, Shin JH. Botulinum Toxin Injections and
476 Electrical Stimulation for Spastic Paresis Improve Active Hand Function Following Stroke.
477 *Toxins (Basel).* 2018;10(11).
- 478 20. Dong Y, Wu T, Hu X, Wang T. Efficacy and safety of botulinum toxin type A for upper
479 limb spasticity after stroke or traumatic brain injury: a systematic review with meta-
480 analysis and trial sequential analysis. *Eur J Phys Rehabil Med.* 2017;53(2):256-267.
- 481 21. Simpson DM, Hallett M, Ashman EJ, et al. Practice guideline update summary:
482 Botulinum neurotoxin for the treatment of blepharospasm, cervical dystonia, adult
483 spasticity, and headache: Report of the Guideline Development Subcommittee of the
484 American Academy of Neurology. *Neurology.* 2016;86(19):1818-1826.
- 485 22. Minamoto VB, Suzuki KP, Bremner SN, Lieber RL, Ward SR. Dramatic changes in muscle
486 contractile and structural properties after 2 botulinum toxin injections. *Muscle Nerve.*
487 2015;52(4):649-657.
- 488 23. Ward SR, Minamoto VB, Suzuki KP, Hulst JB, Bremner SN, Lieber RL. Recovery of rat
489 muscle size but not function more than 1 year after a single botulinum toxin injection.
490 *Muscle Nerve.* 2017.
- 491 24. Ates F, Yucesoy CA. Effects of botulinum toxin type A on non-injected bi-articular muscle
492 include a narrower length range of force exertion and increased passive force. *Muscle*
493 *Nerve.* 2014;49(6):866-878.
- 494 25. Yucesoy CA, Ateş F. BTX-A has notable effects contradicting some treatment aims in the
495 rat triceps surae compartment, which are not confined to the muscles injected. *J*
496 *Biomech.* 2018;66:78-85.
- 497 26. Thacker BE, Tomiya A, Hulst JB, et al. Passive mechanical properties and related proteins
498 change with botulinum neurotoxin A injection of normal skeletal muscle. *J Orthop Res.*
499 2012;30(3):497-502.
- 500 27. Kaya CS, Yilmaz EO, Akdeniz-Dogan ZD, Yucesoy CA. Long-Term Effects With Potential
501 Clinical Importance of Botulinum Toxin Type-A on Mechanics of Muscles Exposed. *Front*
502 *Bioeng Biotechnol.* 2020;8:738.
- 503 28. Pingel J, Wienecke J, Lorentzen J, Nielsen JB. Botulinum toxin injection causes hyper-
504 reflexia and increased muscle stiffness of the triceps surae muscle in the rat. *J*
505 *Neurophysiol.* 2016;116(6):2615-2623.
- 506 29. Mathevon L, Michel F, Decavel P, Fernandez B, Parratte B, Calmels P. Muscle structure
507 and stiffness assessment after botulinum toxin type A injection. A systematic review.
508 *Ann Phys Rehabil Med.* 2015;58(6):343-350.
- 509 30. Gao F, Grant TH, Roth EJ, Zhang LQ. Changes in passive mechanical properties of the
510 gastrocnemius muscle at the muscle fascicle and joint levels in stroke survivors. *Arch*
511 *Phys Med Rehabil.* 2009;90(5):819-826.
- 512 31. Kwah LK, Herbert RD, Harvey LA, et al. Passive mechanical properties of gastrocnemius
513 muscles of people with ankle contracture after stroke. *Arch Phys Med Rehabil.*
514 2012;93(7):1185-1190.

- 515 32. Nelson CM, Murray WM, Dewald JPA. Motor Impairment-Related Alterations in Biceps
516 and Triceps Brachii Fascicle Lengths in Chronic Hemiparetic Stroke. *Neurorehabil Neural*
517 *Repair*. 2018;32(9):799-809.
- 518 33. Given JD, Dewald JP, Rymer WZ. Joint dependent passive stiffness in paretic and
519 contralateral limbs of spastic patients with hemiparetic stroke. *J Neurol Neurosurg*
520 *Psychiatry*. 1995;59(3):271-279.
- 521 34. Mirbagheri MM, Alibiglou L, Thajchayapong M, Rymer WZ. Muscle and reflex changes
522 with varying joint angle in hemiparetic stroke. *J Neuroeng Rehabil*. 2008;5:6.
- 523 35. Eby S, Zhao H, Song P, et al. Quantitative Evaluation of Passive Muscle Stiffness in
524 Chronic Stroke. *Am J Phys Med Rehabil*. 2016;95(12):899-910.
- 525 36. de Gooijer-van de Groep KL, de Vlugt E, van der Krogt HJ, et al. Estimation of tissue
526 stiffness, reflex activity, optimal muscle length and slack length in stroke patients using
527 an electromyography driven antagonistic wrist model. *Clin Biomech (Bristol, Avon)*.
528 2016;35:93-101.
- 529 37. Sinkjaer T, Magnussen I. Passive, intrinsic and reflex-mediated stiffness in the ankle
530 extensors of hemiparetic patients. *Brain*. 1994;117 (Pt 2):355-363.
- 531 38. Freire B, Dias CP, Goulart NB, et al. Achilles tendon morphology, plantar flexors torque
532 and passive ankle stiffness in spastic hemiparetic stroke survivors. *Clin Biomech (Bristol,*
533 *Avon)*. 2017;41:72-76.
- 534 39. Schmit BD, Dewald JP, Rymer WZ. Stretch reflex adaptation in elbow flexors during
535 repeated passive movements in unilateral brain-injured patients. *Arch Phys Med*
536 *Rehabil*. 2000;81(3):269-278.
- 537 40. Opheim A, Danielsson A, Alt Murphy M, Persson HC, Sunnerhagen KS. Upper-limb
538 spasticity during the first year after stroke: stroke arm longitudinal study at the
539 University of Gothenburg. *Am J Phys Med Rehabil*. 2014;93(10):884-896.
- 540 41. Wissel J, Manack A, Brainin M. Toward an epidemiology of poststroke spasticity.
541 *Neurology*. 2013;80(3 Suppl 2):S13-19.
- 542 42. Levy J, Molteni F, Cannaviello G, Lansaman T, Roche N, Bensmail D. Does botulinum
543 toxin treatment improve upper limb active function? *Ann Phys Rehabil Med*.
544 2019;62(4):234-240.
- 545 43. Hara T, Momosaki R, Niimi M, Yamada N, Hara H, Abo M. Botulinum Toxin Therapy
546 Combined with Rehabilitation for Stroke: A Systematic Review of Effect on Motor
547 Function. *Toxins (Basel)*. 2019;11(12).
- 548 44. Lawrence ES, Coshall C, Dundas R, et al. Estimates of the prevalence of acute stroke
549 impairments and disability in a multiethnic population. *Stroke*. 2001;32(6):1279-1284.
- 550 45. Broeks JG, Lankhorst GJ, Rumping K, Prevo AJ. The long-term outcome of arm function
551 after stroke: results of a follow-up study. *Disabil Rehabil*. 1999;21(8):357-364.
- 552 46. Parker VM, Wade DT, Langton Hewer R. Loss of arm function after stroke:
553 measurement, frequency, and recovery. *Int Rehabil Med*. 1986;8(2):69-73.
- 554 47. Nakayama H, Jorgensen HS, Raaschou HO, Olsen TS. Recovery of upper extremity
555 function in stroke patients: the Copenhagen Stroke Study. *Arch Phys Med Rehabil*.
556 1994;75(4):394-398.
- 557 48. Gowland C, Stratford P, Ward M, et al. Measuring Physical Impairment and Disability
558 with the Chedoke-Mcmaster Stroke Assessment. *Stroke*. 1993;24(1):58-63.

- 559 49. Knutson JS, Kilgore KL, Mansour JM, Crago PE. Intrinsic and extrinsic contributions to the
560 passive moment at the metacarpophalangeal joint. *J Biomech.* 2000;33(12):1675-1681.
- 561 50. Faul F, Erdfelder E, Buchner A, Lang AG. Statistical power analyses using G*Power 3.1:
562 tests for correlation and regression analyses. *Behav Res Methods.* 2009;41(4):1149-
563 1160.
- 564 51. Stienen A, Moulton TS, Miller LC, Dewald JPA. Wrist and Finger Torque Sensor for the
565 Quantification of Upper Limb Motor Impairments Following Brain Injury. Paper
566 presented at: 2011 IEEE International Conference on Rehabilitation Robotics2011; Zurich ,
567 Switzerland.
- 568 52. Fraigne JJ, Torontali ZA, Snow MB, Peever JH. REM Sleep at its Core - Circuits,
569 Neurotransmitters, and Pathophysiology. *Front Neurol.* 2015;6:123.
- 570 53. Krenzer M, Anaclet C, Vetrivelan R, et al. Brainstem and spinal cord circuitry regulating
571 REM sleep and muscle atonia. *PLoS One.* 2011;6(10):e24998.
- 572 54. Hodes R, Dement WC. Depression of Electrically Induced Reflexes ("H-Reflexes") in Man
573 during Low Voltage Eeg "Sleep". *Electroencephalogr Clin Neurophysiol.* 1964;17:617-
574 629.
- 575 55. Magezi DA. Linear mixed-effects models for within-participant psychology experiments:
576 an introductory tutorial and free, graphical user interface (LMMgui). *Front Psychol.*
577 2015;6:2.
- 578 56. Lan Y, Yao J, Dewald JPA. The Impact of Shoulder Abduction Loading on Volitional Hand
579 Opening and Grasping in Chronic Hemiparetic Stroke. *Neurorehabil Neural Repair.*
580 2017;31(6):521-529.
- 581 57. Li S, Chen YT, Francisco GE, Zhou P, Rymer WZ. A Unifying Pathophysiological Account
582 for Post-stroke Spasticity and Disordered Motor Control. *Front Neurol.* 2019;10:468.
- 583 58. McPherson LM, Dewald JPA. Differences between flexion and extension synergy-driven
584 coupling at the elbow, wrist, and fingers of individuals with chronic hemiparetic stroke.
585 *Clin Neurophysiol.* 2019;130(4):454-468.
- 586 59. Hallett M. Explanation of timing of botulinum neurotoxin effects, onset and duration,
587 and clinical ways of influencing them. *Toxicon.* 2015;107(Pt A):64-67.
- 588 60. Liu F, Tang W, Chen D, et al. Expression of TGF-beta1 and CTGF Is Associated with
589 Fibrosis of Denervated Sternocleidomastoid Muscles in Mice. *Tohoku J Exp Med.*
590 2016;238(1):49-56.
- 591 61. Faturi FM, Franco RC, Gigo-Benato D, et al. Intermittent stretching induces fibrosis in
592 denervated rat muscle. *Muscle Nerve.* 2016;53(1):118-126.
- 593 62. Kuypers HG. The Descending Pathways to the Spinal Cord, Their Anatomy and Function.
594 *Prog Brain Res.* 1964;11:178-202.
- 595 63. Lawrence DG, Kuypers HG. The functional organization of the motor system in the
596 monkey. I. The effects of bilateral pyramidal lesions. *Brain.* 1968;91(1):1-14.
597
- 598

Passive Hand Mechanics Post Stroke and BoNT

599 Figure 1: Representative plots, from three separate individuals (A, B, & C), of EMG and torque
600 traces over 90 seconds within one of the initial stretches accommodating the participant to the
601 device and reducing muscle hypertonia. Displayed are raw rectified unfiltered data (blue lines),
602 rectified and filtered EMG (red lines), processed 1 second binned data (black lines), with EMG
603 threshold cutoff for active muscle (magenta lines). Though the participant was “relaxed” at the
604 beginning of each stretch there is significant EMG activity initially with subsequent EMG and
605 torque reduction within each. Example A demonstrates Flexor Digitorum Superficialis (FDS) and
606 Flexor Carpi Ulnaris (FCU) EMG initially firing at a low levels with activity decreasing and a
607 corresponding decrease in wrist torque that continues throughout the trial. Example B
608 demonstrates EMG activity reducing across all muscles with a corresponding decrease in finger
609 and wrist torque that continues throughout the trial. Example C demonstrates low levels of FDS
610 and high levels of FCU EMG hyperactivity initially with hyperactivity stopping within 15 seconds
611 and a corresponding decrease in wrist extension torque that continues throughout the trial.

612
613 Figure 2: Average metacarpophalangeal (MCP) torques measured in the paretic (red) and non-
614 paretic (blue) limbs over MCP joint range of motion for the (a) no-BoNT mildly, moderately, and
615 severely impaired and BoNT-injected groups. Data are shown for 3 of the 9 wrist postures tested,
616 including locked in 60 (left), 0 (middle), and -60 degrees flexion (right). Negative angles and
617 torques indicate extension, positive indicates flexion. (b) Average interlimb difference in MCP
618 torques (paretic torque minus non-paretic torque) for the same locked wrist postures in (a), for
619 each group (shaded grey bars). * denotes significant difference ($p < 0.005$) in torques measured
620 between paretic and non-paretic limbs within the group. ** denotes significant difference
621 ($p < 0.005$) from all other groups. Only the BoNT-injected torque differences were significantly

Passive Hand Mechanics Post Stroke and BoNT

622 different between limbs and greater than the other groups. Error bars indicate one standard error
623 of measurement.

624

625 Figure 3: Average wrist torques measured in the paretic (red) and non-paretic (blue) limb over the
626 wrist's range of motion for the (a) no-BoNT mildly, moderately, and severely impaired and BoNT-
627 injected groups. Metacarpophalangeal (MCP) posture was locked in -60 (left), 0 (middle), and 75
628 degrees flexion (right). Negative angles and torques indicate extension and positive flexion. (b)
629 Average interlimb difference in wrist torques (paretic torques minus non-paretic torques) for each
630 group (shaded grey bars), at each locked MCP posture. * denotes significant difference ($p < 0.005$)
631 in torques measured between paretic and non-paretic limbs within the group. ** denotes significant
632 difference ($p < 0.005$) from all other groups. Only the BoNT-injected torque differences were
633 significantly different between limbs and greater than the other groups. Error bars indicate one
634 standard error of measurement.

635

636 Figure 4: Limits of the metacarpophalangeal (MCP) passive range of motion (ROM) in extension
637 throughout the custom device's nine available wrist postures for the no-BoNT (a) mildly, (b)
638 moderately, and (c) severely impaired and (d) BoNT-injected groups groups. All, but one BoNT-
639 injected subject (limited to -15 degrees), could be positioned in all 9 wrist postures, limits of ROM
640 for MCP presented are the average for the paretic (red) and non-paretic (blue) hands. MCP
641 extension of the paretic hand in the BoNT-injected and moderate groups were significantly less
642 than the non-paretic hand (*denotes $p < 0.005$ between paretic v non-paretic hands). ** denotes
643 significant difference ($p < 0.005$) from all other groups. Deficits in passive extension increased with

Passive Hand Mechanics Post Stroke and BoNT

644 wrist extension. No significant loss of passive MCP extension was observed in the severe or mild
645 groups. Error bars indicate one standard error of measurement.

646

647
648

Table 1: Table of Inclusion/Exclusion Criteria for Participants

Subject Inclusion Criteria
Stroke occurred at least one year prior to participation in the study
Paralysis confined to one side of the body
Ability to give informed consent
BoNT Group Only: History of BoNT injection in the paretic forearm
Subject Exclusion Criteria
Multiple Strokes
Stroke occurred in the cerebellum or brainstem
Impairment or injury in the unimpaired limb
Severe atrophy of the impaired limb
Severe concurrent medical problems
No-BoNT Groups: History of BoNT injection in the paretic forearm

649
650
651

Table 2: Subject Demographics.
 (CMHS – Chedoke McMaster Stroke Assessment Hand Score, MAS – Modified Ashworth Scale)

Impairment Level	Sex	Age in years (SD)	Time Since Stroke in years (SD)	Age at time of stroke in years (SD)	Paretic Side	CMHS	MAS	Time Since Last BoNT Injection in years (SD)
BoNT-Injected Severe (n=7)	6-M, 1-F	56.7 (8.3)	10.7 (5.3)	46.0 (5.1)	4-L,3-R	2.85 (0.38)	2.71 (0.48)	4.5 (2.8)
No-BoNT Severe (n=9)	6-M, 3-F	60.28 (10.40)	17.1 (7.91)	43.2 (13.6)	5-L, 4-R	2.44 (0.73)	2.17 (0.87)	n/a
Moderate (n=9)	5-M, 4-F	64.3 (7.95)	13.2 (7.96)	51.1 (12.5)	6-L, 3-R	4.22 (0.44)	1.78 (0.94)	n/a
Mild (n=9)	5-M, 4-F	56.93 (12.18)	8.41 (3.71)	48.5 (9.8)	1-L, 8-R	6.44 (0.53)	0.28 (0.57)	n/a

Figure 1

Examples of muscle hyperactivity reduction during static stretching prior to data collection

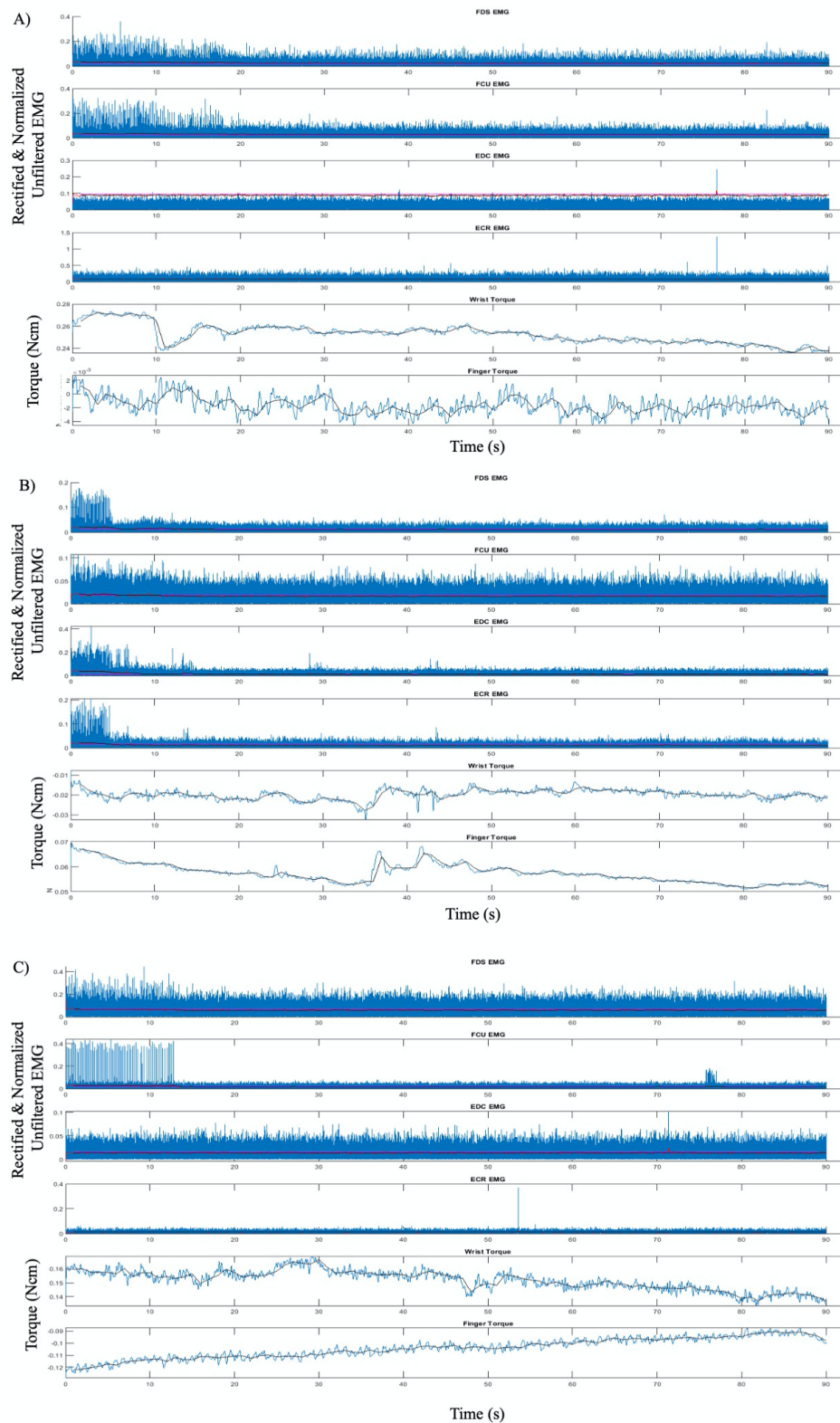


Figure 2

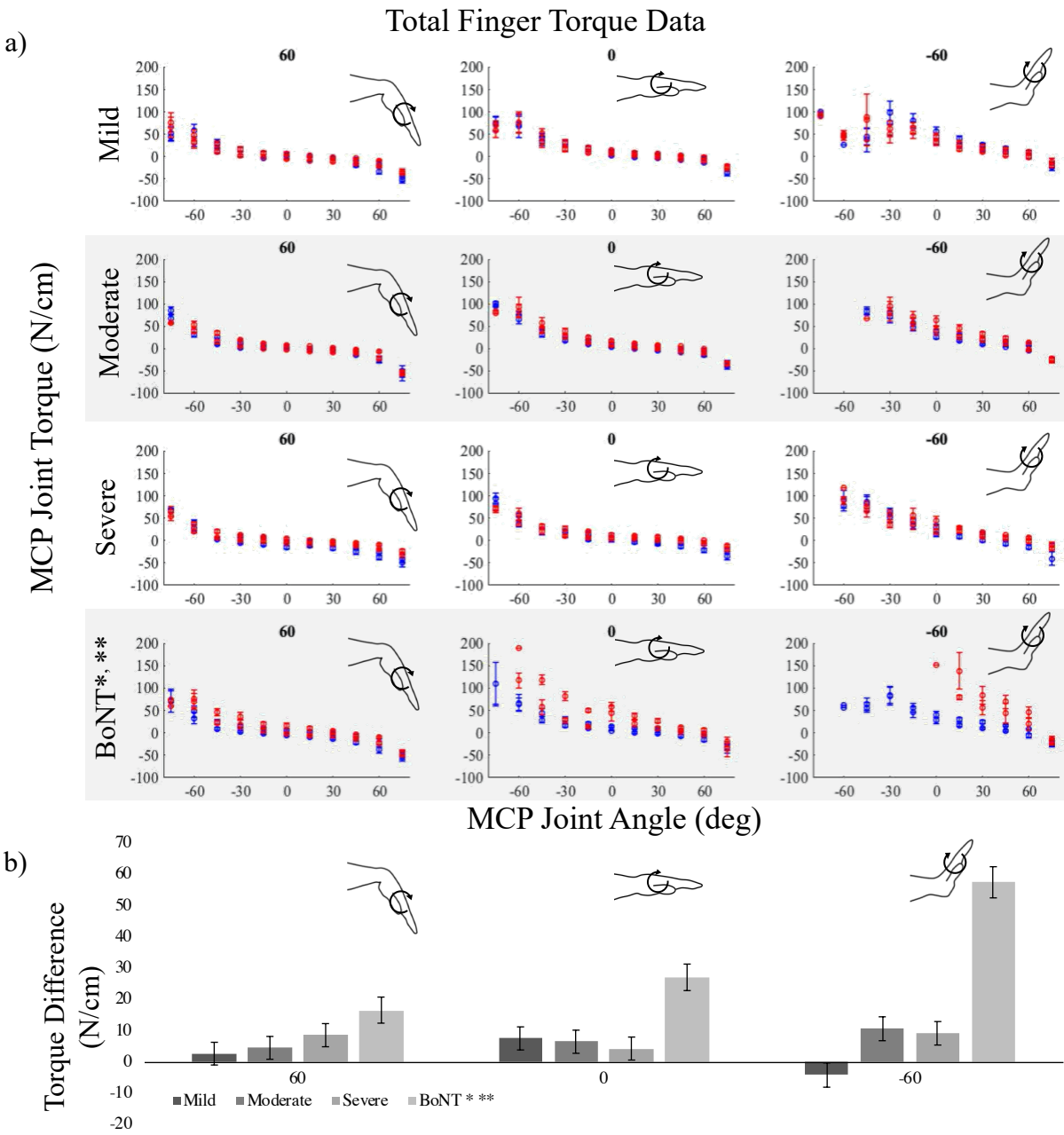


Figure 3

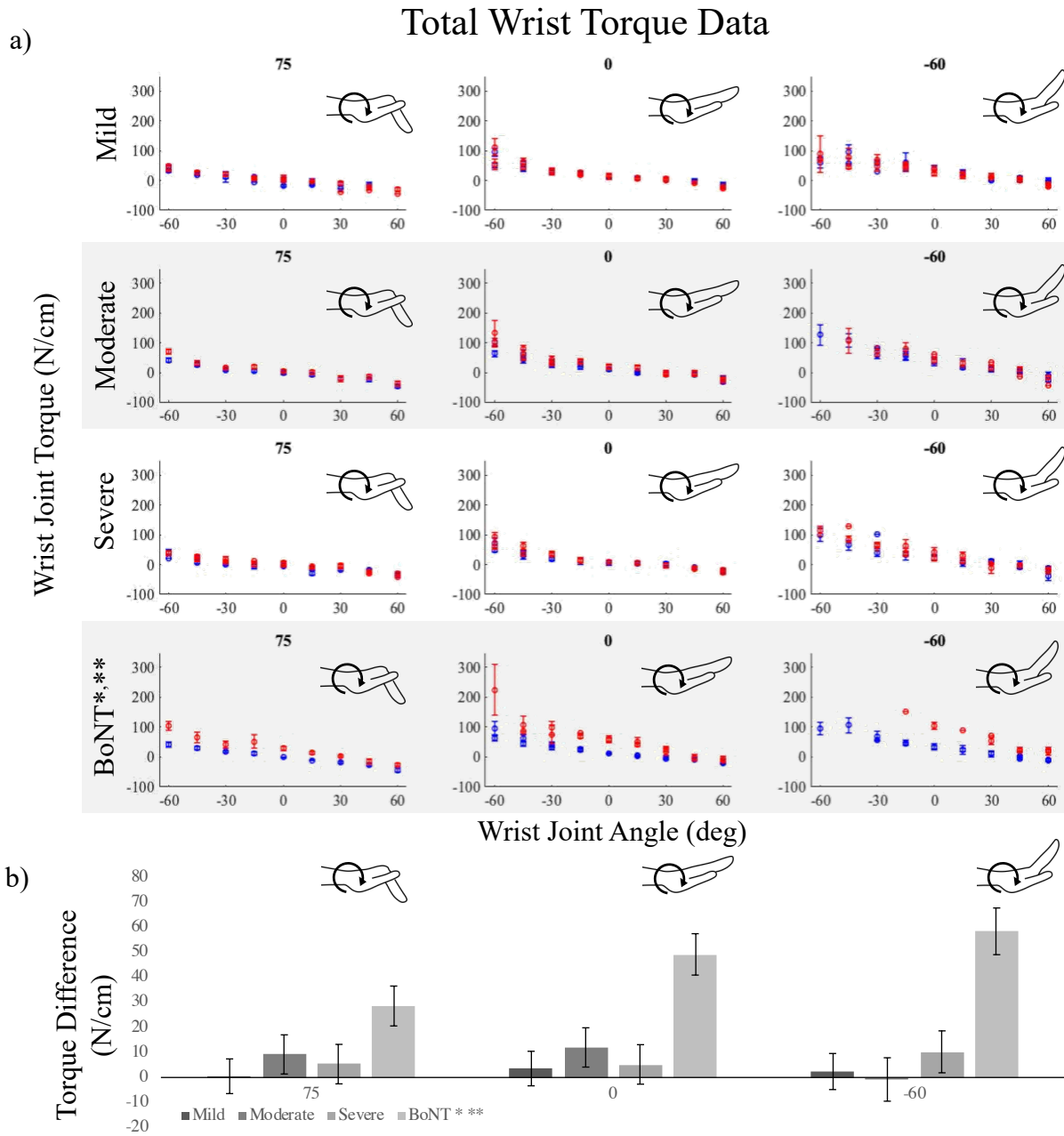


Figure 4

