

1           **Improved diagnosis of SARS-CoV-2 by using Nucleoprotein and Spike protein**  
2                           **fragment 2 in quantitative dual ELISA tests**

3 Carolina De M. Verissimo<sup>1\*</sup>; Carol O'Brien<sup>2</sup>; Jesús López Corrales<sup>1</sup>; Amber Dorey<sup>1</sup>; Krystyna  
4 Cwiklinski<sup>1</sup>; Richard Lalor<sup>1</sup>; Jack M. Doyle<sup>2</sup>; Stephen Field<sup>3</sup>; Claire Masterson<sup>4</sup>; Eduardo  
5 Ribes Martinez<sup>4</sup>; Gerry Hughes<sup>5,6</sup>; Colm Bergin<sup>5,6</sup>; Kieran Walshe<sup>2</sup>; Bairbre McNicholas<sup>7</sup>;  
6 John G. Laffey<sup>4</sup>; John P. Dalton<sup>1</sup>; Colm Kerr<sup>5,6</sup>; Sean Doyle<sup>2</sup>

7

8 1- Molecular Parasitology Lab (MPL) - Centre for One Health and Ryan Institute, School of  
9 Natural Science, National University of Ireland Galway, Galway, Republic of Ireland.

10 2- Department of Biology - National University of Ireland Maynooth, Maynooth – Ireland.

11 3- Clinical Associate Professor (TCD), Medical and Scientific Director, Irish Blood  
12 Transfusion Service, Dublin, Ireland.

13 4- School of Medicine, and Regenerative Medicine Institute (REMEDI) at CÚRAM Centre for  
14 Research in Medical Devices, Biomedical Sciences Building, National University of Ireland  
15 Galway, Galway, Ireland.

16 5- School of Medicine, Trinity College Dublin, College Green, Dublin 2, Ireland.

17 6- Department of Infectious Diseases, St James's Hospital, James's Street, Dublin 8, Ireland.

18 7- Department of Anaesthesia and Intensive Care Medicine, University Hospital Galway,  
19 Saolta University Hospital Group, Galway Ireland.

20

21 \*Corresponding author: [carolina.verissimo@nuigalway.ie](mailto:carolina.verissimo@nuigalway.ie)

22

23

24

25

26

27

NOTE: This preprint reports new research that has not been certified by peer review and should not be used to guide clinical practice.

## 28 SUMMARY

29 The novel Coronavirus, SARS-CoV-2, is the causative agent of the 2020 worldwide  
30 coronavirus pandemic. Antibody testing is useful for diagnosing historic infections of a  
31 disease in a population. These tests are also a helpful epidemiological tool for predicting how  
32 the virus spreads in a community, relating antibody levels to immunity and for assessing herd  
33 immunity. In the present study, SARS-CoV-2 viral proteins were recombinantly produced  
34 and used to analyse serum from individuals previously exposed, or not, to SARS-CoV-2. The  
35 nucleocapsid (Npro) and Spike subunit 2 (S2Frag) proteins were identified as highly  
36 immunogenic, although responses to the former were generally greater. These two proteins  
37 were used to develop two quantitative ELISA assays that when used in combination resulted  
38 in a highly reliable diagnostic test. Npro and S2Frag-ELISAs could detect at least 10% more  
39 true positive COVID-19 cases than the commercially available ARCHITECT test (Abbott).  
40 Moreover, our quantitative ELISAs also show that specific antibodies to SARS-CoV-2  
41 proteins tend to wane rapidly even in patients that had developed severe disease. As antibody  
42 tests complement COVID-19 diagnosis and determine population-level surveillance during  
43 this pandemic, the alternative diagnostic we present in this study could play a role in  
44 controlling the spread of the virus.

45

## 46 INTRODUCTION

47 SARS-CoV-2 is a newly emerging member of the *Coronaviridae* (CoV) family, responsible  
48 for the Coronavirus disease-2019 (COVID-19) pandemic. It was first identified in December  
49 2019 in Wuhan, Hubei province, People's Republic of China, after several individuals  
50 developed severe pneumonia similar to that caused by SARS-CoV, the virus responsible for  
51 the 2003 SARS outbreak in Asia [1, 2]. Person-to-person transmission of the virus resulted in  
52 rapid spreading of SARS-CoV-2 worldwide. More than one year later, the World Health  
53 Organization (WHO) reported that SARS-CoV-2 was responsible for more than 130 million  
54 infections and 2.8 million deaths around the world [3].

55 SARS-CoV-2 is an enveloped virus that contains a single-stranded positive-sense  
56 RNA. The virus attaches to pulmonary cells via the angiotensin converting enzyme 2 (ACE-  
57 2) receptor mediated by a glycoprotein expressed on its surface, the Spike protein (Spro) [4].  
58 Fusion of the viral membrane with the lumen of the endosomal membrane leads to

59 endocytosis, facilitating infection via entry of the viral RNA into the cytosol. During the  
60 intracellular viral life cycle, two large polyproteins, pp1a and pp1ab, are translated. Sixteen  
61 non-structural proteins (nsp) are co-translationally and post-translationally released from  
62 pp1a and pp1ab upon proteolytic activity of two virus proteases, the papain-like protease  
63 (PLpro) and the 3C-like protease. These proteins are responsible for the establishment of the  
64 viral replication and transcription complex (RTC) which is crucial for virus replication inside  
65 the cells [5].

66 Individuals infected with SARS-CoV-2 can take from one to 14 days to develop  
67 symptoms, which range from mild to severe. Common symptoms associated with infection  
68 include fever, dry cough, tiredness, loss of taste or smell, aches and pains and diarrhoea.  
69 However, infection in a high proportion of individuals can lead to severe acute respiratory  
70 syndrome (SARS) or acute respiratory distress syndrome (ARDS) which usually require  
71 intensive care. The most severe cases can lead to death [6, 7].

72 Acute COVID-19 diagnosis mainly relies on real-time reverse transcription  
73 polymerase chain reaction (qRT-PCR) or RT loop-mediated isothermal amplification (RT-  
74 LAMP) testing of respiratory secretions [8]. In the context of the recent virus variants, whole  
75 genome sequencing can also be performed to determine the sequence of the SARS-CoV-2  
76 virus in a sample [9]. Antigen-Detecting Rapid Diagnostic Tests (Ag-RDTs) were developed  
77 and have been successfully applied to detect the presence of viral antigens, typically using  
78 samples from the respiratory tract to increase the sensitivity of the test [10]. Computed  
79 tomography (CT) scans can also be performed and show bilateral multilobular ground-glass  
80 opacities which aid in diagnosis. Part of the strategy to identify those exposed to infection  
81 and with an established immune response includes serological tests to detect antibodies to  
82 SARS-CoV-2. Furthermore, qRT-PCR and serological testing can be used in combination,  
83 which was demonstrated to significantly increase the viral detection rates [8, 11].

84 In general, it takes several days for individuals to build an immune response to the  
85 virus. Antibodies to SARS-CoV-2 antigens are detectable in less than 40% of patients within  
86 one week of the onset of symptoms, but rapidly increase in the following days [12, 13].  
87 Longitudinal studies are necessary to characterize the longevity of the antibodies in  
88 convalescent individuals and to determine if these confer protective immunity [13, 14], and  
89 more specifically, to identify which antigen(s) this immunity is directed towards [15, 16].  
90 This knowledge is critical to assess the epidemiological context of the COVID-19 pandemic

91 and for the differentiation between exposed and non-exposed individuals to define the  
92 locality and distribution of infection that can guide pandemic control measures such as social  
93 distancing. It is also important for vaccine design and the evaluation of vaccine candidates.

94 SARS-CoV-2 antibody tests are widely used for surveillance studies to gather  
95 information about infectivity of the virus in a population. Existing commercial SARS-CoV-2  
96 antibody tests, including enzyme-linked immunosorbent assays (ELISA), chemiluminescence  
97 immunoassays and lateral flow assays, were developed using specific viral antigens,  
98 principally the Nucleocapsid protein (Npro) and the Spike protein (Spro). The manufacturers  
99 of several commercial tests assert that these tests have sensitivities between 86.3 and 100%  
100 and specificities from 97 to 100%. However, recent studies that have evaluated the accuracy  
101 of antibody tests for use in seroprevalence surveys have reported reduced sensitivities. For  
102 example, Schnurra et al. [17] compared the performance of eight different commercial tests  
103 and concluded that at least four of them were slightly less sensitive than specified by the  
104 manufacturers. Similarly, evaluations made by Public Health England (PHE) found that one  
105 in five people with positive results for SARS-CoV-2 in an antibody test used in UK could be  
106 wrongly told that they had the infection [18, 19]. Considering the highlighted problems with  
107 sensitivity and the limited data regarding the immune response of those individuals beyond  
108 35 days post-symptom onset, such results need to be carefully interpreted by public health  
109 authorities [20].

110 Timely and accurate diagnosis and identification of an immune response to SARS-  
111 CoV-2 infection is the foundation of efforts to provide appropriate treatment and recommend  
112 isolation that ultimately can contain the COVID-19 pandemic. Npro and Spro-based tests  
113 were observed to react with different sets of sera and, therefore, using a combination of viral  
114 antigens to assess the antibody response could represent a strategy to increase the accuracy of  
115 identifying true positives [17]. In the present study we demonstrate how the current  
116 serological diagnosis of SARS-CoV-2 can be improved by using two highly immunogenic  
117 virus proteins, Npro and the S2 subdomain of Spro (S2Frag), in a dual ELISA test to detect  
118 specific antibody responses to the virus.

119

## 120 **METHODS**

### 121 **Selecting viral antigens**

122 In the present study, the full length SARS-CoV-2 Spike protein (Spro, ~135 kDa) and four  
123 different sections, Spike protein fragment 1 (S1frag, 1-686, ~75 kDa), Spike protein fragment  
124 2 (S2frag, 687-1273, ~54 kDa), the Spike protein fragment 2 prime region (S2Prime, 816-  
125 1273, ~38 kDa) and the receptor binding domain (RBD, 319-542, ~29 kDa) were selected for  
126 recombinant expression (Fig 1A and B) (see also [15]). The entire Npro sequence (2-1269; 50  
127 kDa) was synthesised for recombinant expression (Fig 1C).

128

### 129 **Recombinant expression of SARS-CoV-2 proteins in *Escherichia coli***

130 Sequences encoding the spike protein were codon optimized for expression in *Escherichia*  
131 *coli* and cloned into the pET-28a(+) vector, and into pET-19b for nucleocapsid protein  
132 (Genscript Biotech). While Npro contains an N-terminal His-Tag followed by an  
133 enterokinase cleavage site, all other proteins contain a thrombin cleavage site followed by a  
134 C-terminal His-tag. The synthesized vectors were transformed into BL21 competent *E. coli*  
135 cells (ThermoFisher Scientific) following the manufacturer's instructions and stored in Luria  
136 Bertani (LB) broth (Sigma) supplemented with 25% glycerol at -80°C. LB broth  
137 supplemented with 50 µg/mL kanamycin, or 100 µg/mL ampicillin for Npro, was inoculated  
138 from the glycerol stock and incubated shaking at 37°C overnight. The culture was then  
139 diluted in fresh LB broth supplemented with the appropriate antibiotic, incubated at 37°C to  
140 OD<sub>600</sub> 0.6 and protein expression induced with 1 mM isopropyl-β-D-1-thiogalactopyranoside  
141 (IPTG; ThermoFisher Scientific) for 4 hr at 30°C. For Npro the cultures were induced with  
142 0.5 mM IPTG for 3 hr at 37°C. Following centrifugation at 10,000 x g for 10 min at 4°C, the  
143 bacterial pellets were re-suspended in 10 mL ST buffer (10 mM Tris, 150 mM NaCl, pH 8.0)  
144 and stored at -20 °C.

145

### 146 **Solubilisation and purification of recombinant SARS-CoV-2 proteins**

147 Defrosted pellets were treated with 0.1 mg/mL lysozyme in the presence of 40 mM DTT for  
148 1 hr on ice. The proteins in inclusion bodies were solubilised according the protocol  
149 described by Schlager et al. [21] protocol. Firstly, a 1% (w/v) SDS buffer (8 mM Na<sub>2</sub>HPO<sub>4</sub>,  
150 286 mM NaCl, 1.4 mM KH<sub>2</sub>PO<sub>4</sub>, 2.6 mM KCl, 1% (w/v) SDS, pH 7.4) containing 0.1 mM  
151 DTT was added to the pellets, which were then sonicated twice for 2 min, 40% amplitude.  
152 The samples were centrifuged 15,000 x g at 4°C for 30 min and the resulting supernatant was

153 filtered using 0.45 µm syringe filters. The filtered supernatant containing the soluble  
154 recombinant protein was passed through a pre-equilibrated Ni-NTA beads column (Qiagen).  
155 The column was washed with 30 mL of wash buffer (8 mM Na<sub>2</sub>HPO<sub>4</sub>, 286 mM NaCl, 1.4  
156 mM KH<sub>2</sub>PO<sub>4</sub>, 2.6 mM KCl, 0.1% Sarkosyl (w/v), 40 mM imidazole, pH 7.4), and the  
157 recombinant protein was eluted using 4 mL of elution buffer (8 mM Na<sub>2</sub>HPO<sub>4</sub>, 286 mM  
158 NaCl, 1.4 mM KH<sub>2</sub>PO<sub>4</sub>, 2.6 mM KCl, 0.1% Sarkosyl (w/v), 250 mM imidazole, pH 7.4). The  
159 purified protein was buffer-exchanged into 1x PBS containing 0.05% sarkosyl, pH 7.4.

160 Recombinant and soluble Npro was extracted from *E. coli* by sonicating twice for 2  
161 min, 20% amplitude (1 g cells: 5 ml lysis buffer (50 mM Tris, 100 mM NaCl, 1 mM EDTA,  
162 10% (v/v) glycerol pH 8.0, with 1 mM PMSF and 4 µg/mL leupeptin), followed by  
163 centrifugation and dialysis into 20 mM H<sub>2</sub>NaPO<sub>4</sub>, 500 mM NaCl, 20 mM imidazole pH 7.4.  
164 The samples were centrifuged and filtered using 0.45 µm syringe filters, prior to application  
165 to HisTrap HP columns (GE Healthcare) equilibrated in the same buffer. After extensive column  
166 washing, bound Npro was eluted with 20 mM H<sub>2</sub>NaPO<sub>4</sub>, 500 mM NaCl, 500 mM imidazole  
167 pH 7.4. Npro was stored in the elution buffer.

168 Protein concentrations were verified by Bradford Protein Assay (Bio-Rad) and the  
169 proteins visualised on 4-20% SDS-PAGE gels (Bio-Rad) stained with Biosafe Coomassie  
170 (Bio-Rad) to check purity. To further confirm the expression and purification of the  
171 recombinant proteins, Western blots were performed using a monoclonal mouse anti-  
172 polyhistidine antibody (diluted 1:5,000) (Sigma-Aldrich) as a primary antibody followed by  
173 incubation with a secondary antibody alkaline phosphatase or horseradish peroxidase (HRP)-  
174 conjugated goat to mouse-anti-IgG (diluted 1:5000) (Sigma-Aldrich). Furthermore, the  
175 veracity of both S2Frag and Npro recombinant proteins was confirmed by high sensitivity  
176 protein mass spectrometry analysis using a Q-Exactive mass spectrometer (ThermoFisher)  
177 prior to use for ELISA development [22].

178

### 179 **Human sera samples**

180 Negative controls consisted of a group of 37 serum samples obtained from the Irish Blood  
181 Transfusion Service. All the samples were collected prior to SARS-CoV-2 pandemic (2018)  
182 and stored at -20°C.

183 Human serum samples were obtained from St. James's Hospital, Trinity College  
184 Dublin with informed consent. The first set comprised 42 serum samples collected from  
185 healthcare workers and all individuals were confirmed to have a SARS-CoV-2 infection by  
186 qRT-PCR. All individuals developed symptomatic SARS-CoV-2 infection, and four subjects  
187 were hospitalized. The group consisted of 29 females and 13 males, ranging from 27 to 64  
188 years old (average 41.5). The samples were obtained between 17 to 40 days post symptoms  
189 onset.

190 A second set consisted of samples collected from 98 healthcare workers with potential  
191 exposure to SARS-CoV-2. This group was divided into symptomatic (N= 49) and  
192 asymptomatic (N= 49) individuals. Of the 49 symptomatic individuals, only four were  
193 confirmed to have a SARS-CoV-2 infection by qRT-PCR. One of these individuals was  
194 hospitalized and admitted to the Intensive Care Unit (ICU). The other 45 individuals were not  
195 tested by qRT-PCR because of the number of days after onset of symptoms >7 days. The  
196 symptomatic group consisted of 37 female and 12 male individuals, ranging from 23 to 63  
197 years old. The samples were collected between 16 and 113 days after onset of symptoms. The  
198 asymptomatic group was formed by 26 females and 23 males, ranging from 22 to 64 years  
199 old. Seven individuals in this group were tested for SARS-CoV-2 infection by qRT-PCR due  
200 to close contact status tested and were all given negative results.

201 Plasma samples from individuals hospitalized with or without COVID-19 related  
202 symptoms were obtained. This group consisted of 25 patients, 13 females and 12 males  
203 (between 35 to 89 years old), and was divided into qRT-PCR positive (N=15) and qRT-PCR  
204 negative (N=10). The plasma samples were collected between 0 and 65 days after onset of  
205 symptoms. Two plasma samples, at different time-points, were obtained and analysed from  
206 those 15 qRT-PCR positive patients. Of the 15 positive individuals, seven were admitted to  
207 the ICU (2 females and 5 males, ranging from 50 to 73 years old). Seven individuals required  
208 invasive ventilation. One of the individuals died (male, 79 years old).

209 Human experimental work was conducted according to Human Research Ethics  
210 Committees. Ethical approval for the healthcare worker serum sample collection and analysis  
211 was granted by the St. James's Hospital and Tallaght University Hospital research ethics  
212 committee in April 2020 (reference 2020-04 List 15) and permit BSRESC-2020-2403204  
213 (Maynooth University Ethics committee). The work conducted with the samples from  
214 hospitalized patients followed the research permit 20-NREC-COV-20 (Galway University

215 hospital research ethics committee). All participants provided written informed consent prior  
216 to the study or assent followed by informed consent once able for patients admitted to the  
217 ICU where informed consent was not possible.

218

### 219 **Western Blot assays**

220 Purified recombinant proteins (~2.5 µg/lane) were resolved in a 4-20% SDS-PAGE gel  
221 (BioRad) and transferred on to a nitrocellulose membrane. The membranes were incubated in  
222 blocking solution (2% BSA-PBST) at 4°C, overnight, then probed with human sera diluted  
223 1:100 in 2% BSA-PBST for 1 hr at room temperature. The membrane was washed four times  
224 in PBST before incubation with the secondary antibody, HRP-conjugated goat anti-Human  
225 IgG (Fc specific) diluted 1:15000 in 2% BSA-PBST, for 1 hr at RT. The blots were  
226 developed for 3 min using 3,3'-Diaminobenzidine substrate (DAB, Sigma-Aldrich).

227

### 228 **Dual antigen SARS-CoV-2 ELISA development**

229 For the dual ELISA tests, separated flat-bottom 96 well microtitre plates (Nunc MaxiSorp,  
230 Biolegend) were coated with either Npro (1 µg/mL) or S2Frag (1 µg/mL) diluted in carbonate  
231 buffer and incubated overnight at 4°C. The plates were incubated with blocking buffer (2%  
232 BSA in PBS-0.05% Tween-20 (v/v), PBST, pH 7.4) and washed. Individual sera samples,  
233 diluted 1:100 in blocking buffer, were added in duplicate to antigen-coated wells and  
234 incubated for 1 hr at 37°C. After washing five times with PBST, the secondary antibody HRP  
235 goat anti-human IgG (Fc specific) (Sigma-Aldrich) was added (1:15,000), and the plates were  
236 incubated for 1 hr at 37°C. After washing five times, TMB substrate (3,3',5,5'-  
237 Tetramethylbenzidine Liquid Substrate Supersensitive, Sigma-Aldrich) was added to each  
238 well. Following a three-minute incubation the reaction was stopped with 2 N sulphuric acid  
239 and plates read at 450 nm in a plate reader (PolarStar). The background value was discounted  
240 from the blanks and a cut-off (CO) value for each ELISA test was calculated from the  
241 average of all the negative control samples plus three standard deviations. The average OD  
242 (450 nm) obtained for each sample tested was divided by the cut-off of the test. Values >1  
243 were considered SARS-CoV-2 positive in the test. Values <1 were negative SARS-CoV-2 in  
244 the test. Data were analysed using Prism 5 (Graphpad).



245 The commercially available Abbott ARCHITECT SARS-CoV-2 IgG ELISA test was  
246 performed according manufacturer's instructions.

247

### 248 **Assessing the antibody response of COVID-19 hospitalized patients using the dual** 249 **antigen SARS-CoV-2 ELISA**

250 Plasma samples of hospitalized patients with confirmed or suspected COVID-19 infection  
251 were tested for the presence of IgG antibodies to Npro and S2Frag using our dual SARS-  
252 CoV-2 ELISA assays (see section above). Individual plasma samples, diluted 1:100 in  
253 blocking buffer, were added in duplicate into antigen-coated wells and incubated for 1 h at  
254 37°C. The ELISA assays were developed as described above. The average OD (450 nm)  
255 obtained for each sample tested was divided by the cut-off calculated for the test. Values > 1  
256 were considered SARS-CoV-2 positive in the test. Values <1 were negative SARS-CoV-2 in  
257 the test. Data were analysed using Prism 5 (Graphpad).

258

### 259 **Statistical analyses**

260 Statistical analysis was carried out using GraphPad Prism version 5. Differences between  
261 negative controls and positive controls were analysed using an unpaired t-test. Correlation  
262 between Npro and S2Frag ELISA tests or Abbott ARCHITECT SARS-CoV-2 IgG ELISA  
263 test and our ELISA tests were analysed using Spearman's rank test with 95% confidence  
264 intervals.

265

## 266 **RESULTS**

### 267 **Isolation and solubilisation of SARS-CoV-2 recombinant proteins**

268 Recombinant proteins were successfully expressed in *E. coli* BL21 cells; however, spike  
269 protein and its various subunits were associated with insoluble inclusion bodies. By  
270 employing a protocol using 1% SDS the inclusion bodies were solubilised and the various  
271 proteins purified at ~1 mg/L of culture (Fig 2). The solubilisation and isolation of S2Frag is  
272 shown in Fig 2A and B. Residual insoluble Npro was present in post-lysis recombinant *E.*  
273 *coli* cell pellets. However, high level and soluble Npro expression was observed (yield: 3  
274 mg/L) following affinity chromatography (Fig 2C). High sensitivity proteomic analysis

275 confirmed 53% and 68% sequence coverage for the Npro and S2frag recombinant antigens,  
276 respectively (Supplementary Fig S1).

277

### 278 **ELISA antibody test using Npro and S2Frag distinguishes positive and negative SARS-** 279 **CoV-2 infected individuals**

280 As part of the development and optimization of the in-house ELISA developed with the  
281 recombinant Npro and S2Frag, an appropriate cut-off point for each antigen was established  
282 using 37 negative control human samples collected pre-COVID-19 pandemic (in 2018).  
283 Then, 42 SARS-CoV-2 qRT-PCR positive samples were screened using both Npro-ELISA  
284 and S2Frag-ELISA. This screening showed that all 42 individuals assessed generated  
285 significant levels of IgG antibodies against both Npro and S2Frag proteins (Fig 3). Notably,  
286 infected individuals showed an average antibody response to Npro that was consistently  
287 higher than the reactivity against S2Frag. Notwithstanding, both Npro and S2Frag could be  
288 employed to distinguish positive and negative SARS-CoV-2 infected individuals.

289 Examining the performance of the Npro-ELISA, we deemed 36 (85.7%) samples as  
290 positive infected individuals. When these samples were tested with the S2Frag ELISA assay,  
291 37 (88%) positive samples were identified. However, by combining the results of both  
292 ELISA tests, the number of positive samples was 40 (95.2%) because not all individuals  
293 produced antibodies against both Npro and S2Frag (Fig 4A, Table 1).

294 Serum samples from 98 healthcare workers suspected of exposure to SARS-CoV-2  
295 were also screened in both ELISAs. Of these, 12 (12.2%) were detected as positive using  
296 only the Npro ELISA (Fig 4B and Table 1) while 14 (14.3%) were deemed positive when the  
297 S2Frag ELISA results were considered together with the results of the Npro ELISA.

298

### 299 **Western blot analysis of SARS-CoV-2 positive serum samples**

300 Western blot analysis using purified recombinant Npro and S2Frag proteins was performed  
301 on all serum samples. This analysis confirmed infectivity of all individuals that were deemed  
302 positive by ELISA. However, a wide range of reactivity was observed between patients,  
303 which correlated with our ELISA observations showing that some patients produced

304 antibodies reactive with both Npro and S2Frag while others produced antibodies that reacted  
305 with either Npro or S2Frag (see Fig 5 for representative Western blots).

306

### 307 **Comparison of the Npro and S2Frag ELISAs with a commercially available antibody** 308 **test**

309 In order to assess the sensitivity of the Npro and S2Frag ELISA tests against a commercially  
310 available test, serum samples were tested in parallel using the Abbott ARCHITECT ELISA  
311 (ARCHITECT SARS-CoV-2) which employs Npro as its antigen (Fig 6). Using the 42 qRT-  
312 PCR-confirmed positive serum samples, the data showed complete agreement between the  
313 Abbott ARCHITECT and the Npro ELISA test developed in this study (i.e. 85.4%  
314 sensitivity) (Fig 6A). However, four patients that were negative and two that were positive by  
315 both these tests showed a contrasting result when evaluated by the S2Frag-ELISA (Fig 6B).  
316 Combining the data for the Npro-ELISA and S2Frag-ELISA tests increased the sensitivity of  
317 detection to 95.2% (Table 1).

318 When the ARCHITECT test was employed to screen plasma samples from the 98  
319 healthcare workers suspected of exposure to SARS-CoV-2 only six (6.1%) of these samples  
320 proved positive for SARS-CoV-2. In contrast, 14 (14.3%) individuals were identified as  
321 positive using our in-house ELISA tests (Fig 6C and D and Table 1).

322

### 323 **Antibody responses to SARS-CoV-2 antigens in COVID-19 hospitalized patients**

324 Plasma samples from COVID-19 hospitalized patients were tested for specific antibodies  
325 against our in-house Npro and S2Frag-ELISA tests. Two samples of each patient, at different  
326 time-points after the onset of symptoms, were assessed and compared for their levels of  
327 antibodies against Npro and S2Frag (Fig 7). The data shows that COVID-19 hospitalized  
328 individuals develop strong antibody response to both Npro and S2Frag. However, the level of  
329 antibody to each antigen is very distinct. The OD/CO values obtained to the Npro were  
330 consistently higher than to the S2Frag (Medium OD/CO Npro= 8.46 and S2Frag= 2.09).  
331 Moreover, antibodies to Npro could be detected from day seven after onset of symptoms,  
332 whilst antibodies to S2Frag were only detected from day 11 (Supplementary Table S1).  
333 Nevertheless, from day 15 after onset of symptoms, all individuals assessed showed strong  
334 antibody response to both SARS-CoV-2 antigens.

335           When considering the number of days after onset of symptoms in relation to the  
336 OD/CO values, our data show that COVID-19 patients reached their highest antibody levels  
337 to virus antigens between day 15 and 21 after onset of symptoms. Surprisingly, from day 22  
338 the antibody responses to both Npro and S2frag begin to decline (Fig 7A and B). Since the  
339 S2Frag stimulates a weaker response, specific antibodies to this antigen dropped to levels  
340 close to the cut-off of the test within approximately seven weeks; the average S2Frag OD/CO  
341 values for the first plasma samples obtained between days 15-21 and between 28-35 were  
342 3.64 and 1.34, respectively. These values varied less when we assessed the responses to  
343 Npro; OD/CO values varied from 12.67 to 12.2 when the same intervals were considered  
344 (Supplementary Table S1).

345

## 346 **DISCUSSION**

347 Individuals infected with coronaviruses mount an immune response with protective  
348 neutralizing antibodies for a period of time [23]. Recent studies have shown that neutralizing  
349 antibodies to SARS-CoV-2 proteins can be detected in all infected individuals by day 14 after  
350 onset of symptoms [8, 24]. Both the Spro and Npro are highly immunogenic structural  
351 proteins capable of generating such an antibody response [13, 25-27]. Upon infection, the  
352 Spro is readily presented to the host as part of the invasion process. In contrast, the Npro  
353 integrates with the host cell nucleus and nucleolus and is abundantly expressed during  
354 infection, playing important roles in the transcription and replication of viral RNA and  
355 packaging of the encapsulated genome into virions [28, 29].

356           Since the start of the COVID-19 global pandemic, Spro and Npro have been  
357 extensively used to develop the antibody tests to diagnose past-infection by SARS-CoV-2. As  
358 antibody tests identify historic infections, they are a highly prized tool for epidemiological  
359 studies that track the spread of the virus within the community and for estimating herd  
360 immunity. However, independent and more extensive assessment of these tests has  
361 highlighted serious issues with their sensitivity that result in up to 20% false negativity [17,  
362 18].

363           It has been shown that antibodies targeted against Npro appear earlier than those  
364 against Spro [30], offering an explanation as to why Npro is the antigen of choice in most  
365 commercially available tests. To understand how individuals naturally infected with SARS-  
366 CoV-2 respond to the main viral antigens, six viral proteins were recombinantly expressed:

367 the full-length Spro and four different sub-segments, i.e. S1Frag, S2Frag, S2Prime and RBD  
368 (Fig 1), and the Npro. Through Western blot analysis, variability in the immune response to  
369 each antigen between individuals was observed (Supplementary Fig S2). At least 85% of the  
370 COVID-19 positive individuals tested in this study showed a consistent and strong antibody  
371 response to Npro. However, our data shows that 7% of the COVID-19 non-hospitalized  
372 individuals confirmed positive by qRT-PCR were misdiagnosed as negative when using  
373 either our in-house Npro-ELISA or the commercial ARCHITECT test, demonstrating that  
374 some individuals do not produce antibodies to Npro or, alternatively, had not produced these  
375 at the time of sampling.

376         Despite previous reports stating that the receptor-binding domain (RBD) of the Spro  
377 is highly immunogenic and the target of many neutralizing antibodies, the RBD protein  
378 produced in this study was not immunogenic (Supplementary Fig S2) [31-33]. It is worth  
379 noting that our antigens were recombinantly produced using a prokaryotic *E. coli* system,  
380 while the immunogenic recombinant RBD produced by Amanat et al. [15] was expressed in  
381 mammalian cells. This could have resulted in proteins with different antigenic properties that  
382 affect the ability of host antibodies to recognize the antigen. Nevertheless, our study agrees  
383 with Robbiani et al. [34], who observed that convalescent plasma samples from individuals  
384 who recover from COVID-19 do not contain high levels of RBD-specific neutralizing  
385 antibodies.

386         Conversely, the full-length Spro was consistently recognized by antibodies from  
387 individuals infected by SARS-CoV-2 [32, 35, 36]. Although the subdomain S1 protein  
388 (S1Frag), containing the RBD, is the most common fragment of the Spro used in commercial  
389 serological tests, our study found that a stronger immune response was directed against the  
390 subdomain S2 protein (S2Frag); 38 of the 42 (90.5%) individuals that were SARS-CoV-2  
391 RT-PCR-positive elicited antibodies to the S2Frag, indicating the diagnostic value of the  
392 domain. However, based on the OD/CO values obtained, COVID-19 hospitalized and non-  
393 hospitalized positive individuals mounted stronger immune response against Npro, indicating  
394 that S2Frag is less immunogenic.

395         It was reported that during COVID-19 infection a decrease in the number of viral  
396 particles coincides with the appearance of neutralizing antibodies [37], although the longevity  
397 of such antibodies is debatable. Antibody titres to SARS-CoV-2 proteins were demonstrated  
398 to remain elevated for variable periods, seven days to more than 48 days, and serve to protect

399 the individual against reinfection [8, 24]. In our study we found that infected individuals did  
400 not sustain high antibody levels to SARS-CoV-2 antigens for long periods, and even  
401 individuals that developed severe disease and required intensive care exhibited antibody  
402 declines, mainly those specific to S2Frag, after three weeks (Fig 7 A and B and  
403 Supplementary Table S1). As both anti-Spro and anti-Npro IgG antibodies have been  
404 observed to neutralize SARS-CoV-2 [38], our tests may be of use for assessing protection  
405 after infection or immunization.

406 By performing a dual ELISA with Npro and S2Frag we detected anti-viral antibodies  
407 in 40 out of 42 PCR-positive individuals. Follow-up Western Blot analysis of the two  
408 negative samples by ELISA, indicated that one individual had no antibodies against the viral  
409 antigens (Study code C11, supplementary Fig S4), whilst the second patient had only a weak  
410 response to S2Frag (Study code C86, supplementary Fig S4). The results obtained for C11  
411 suggest that the patient received a false-positive qRT-PCR result, though it is important to  
412 consider that little is known about seroconversion during SARS-CoV-2 infection. While  
413 some patients may seroconvert, others might develop low antibody titres that wane within a  
414 short period of time, generating false-negative results [15]. On the other hand, the analytical  
415 sensitivity of SARS-CoV-2 qRT-PCR tests is 80% [39, 40], leaving a large potential for false  
416 negative results that we certainly observed in our study. Among the ten SARS-CoV-2 qRT-  
417 PCR negative hospitalized patients we evaluated, four tested positive for antibodies to Npro  
418 and/or S2Frag in our ELISAs (Supplementary Table S1). Our results indicate that targeting  
419 the antibody response against both Npro and S2Frag in serological diagnostic tests increases  
420 the sensitivity of detection of true positive SARS-CoV-2 infection and, therefore, represents  
421 an important strategy to improve COVID-19 diagnosis.

422 Our ELISAs results also revealed that ~17% of the 42 qRT-PCR-positive individuals  
423 recognize either Npro or S2Frag antigen only; ~7% of the individuals exclusively recognized  
424 Npro while 10% only recognised S2Frag alone (Fig 4A). These antigen-selective immune  
425 responses were confirmed using Western blot analysis (Fig 5). A similar observation was  
426 reported by Liu et al. [35], who evaluated the IgM and IgG antibody responses of 214  
427 COVID-19 positive patients; Npro- or Spro-based ELISA resulted in positive rates of 80.4%  
428 and 82.2%, respectively, whereas together these detected 86.9% (186 patients). While these  
429 results indicate the diagnostic value of the antigens association, the differential reactivity of  
430 the serum samples with Npro and Spro was not assessed in that particular study [35].

431           When we analysed the antibody response of 15 patients that were hospitalized with  
432 COVID-19 we found that the Npro OD/CO values for ICU and non-ICU patients were 10.34  
433 and 6.82 ( $P < 0.05$ ), respectively (Supplementary Table S1), while the values for S2Frag did  
434 not vary significantly between each group (OD/CO = 1.93 and 2.22, respectively). Sun et al.  
435 [41] also found that anti-Npro IgG antibodies were significantly higher in ICU patients  
436 compared to non-ICU patients. Therefore, anti-Npro antibodies could be an indicator of  
437 disease severity, although we did not find a correlation between antibody levels and age of  
438 the patients in our study (Supplementary Fig S3).

439           In the present study, we compared our ELISAs results with the commercially-  
440 available immunoassay ARCHITECT (Abbott), which detects antibody response solely to  
441 Npro. The results of our in-house Npro-ELISA agreed 100% with the ARCHITECT test  
442 when we screened the 42 qRT-PCR positive sample set. However, only 6 of the 98 healthcare  
443 workers suspected of exposure to SARS-CoV-2 were deemed positive by ARCHITECT test,  
444 compared to 12 identified using our Npro-ELISA. This discrepancy rose to 14 when we  
445 employed the Npro and S2Frag dual ELISA, results which were confirmed by Western Blot  
446 analysis (Fig 5 and Supplementary Fig S4). A recent longitudinal seroprevalence study found  
447 a 95% prevalence of anti-SARS-CoV-2 antibodies in staff working in two hospitals in Ireland  
448 who had previously confirmed infection by PCR. Moreover, 16% of those with detectable  
449 antibodies reported never having experienced COVID-19 symptoms. Noteworthy, the study  
450 used primarily ARCHITECT test that was complemented with the Wantai SARS-CoV-2 AB  
451 ELISA (Fortress Diagnostics) and the Roche anti-SARS-CoV-2 immunoassay, improving the  
452 detection of positive cases and revealing that the real seroprevalence amongst the hospitals'  
453 workers is between 2 and 5% higher than the number given by PCR diagnosis [11]. The  
454 importance of the diagnostic methods applied was further assessed by Rikhtegaran Tehrani et  
455 al. [36], which investigated 300 pre-epidemic samples and 100 PCR-confirmed COVID-19  
456 samples using commercial tests such as EDI™ Novel Coronavirus COVID-19 ELISA,  
457 Euroimmun Anti-SARS-CoV-2 ELISA and PP® COVID-19 IgM/IgG System. This study  
458 found that their in-house Spro and Npro-based ELISAs performed with the highest sensitivity  
459 and specificity. In all, our results indicate that our in-house quantitative ELISA performs  
460 better than the non-quantitative ARCHITECT tests using a single Npro protein and can be  
461 improved by running the dual ELISA assay with S2Frag.

462

## 463 **CONCLUSIONS**

464 COVID-19 serological testing in clinical settings relies on ELISA assays, which can  
465 be both qualitative and quantitative and thus a valuable tool in diagnosing past such  
466 infections [40]. However, the preference for rapid tests and the deficient performance of most  
467 commercially available SARS-CoV-2 serological tests may pose a serious risk to diagnostic  
468 efficacy [8, 17, 18]. Therefore, quantitative ELISA tests such as those developed in this study  
469 could be essential to understand the dynamic of individual antibody response to the virus and,  
470 consequently, plan appropriate measures of control during the COVID-19 pandemic.

471 In this study we evaluated two ELISA tests for detecting IgG antibodies to Npro and  
472 to the subdomain 2 of the Spro (S2Frag), and showed that by combining the tests we can  
473 improve the serological diagnosis of COVID-19 cases. Furthermore, we showed the  
474 applicability of the tests using plasma samples from hospitalized patients. Quantitative  
475 ELISA tests would allow us to assess antibody levels that are associated with protection or  
476 indicate a more recent or historic infection. As serological diagnostics of COVID-19 patients  
477 determine population-level surveillance and complement qRT-PCR and antigen tests, the  
478 optimization of antibody tests is critical to control the COVID-19 pandemic.

479

## 480 **ACKNOWLEDGEMENTS**

481 Dr David Fitzpatrick is acknowledged for expertise regarding Npro sequence identification  
482 for protein expression.

483 Dr Jean Dunne and Dr Niall Conlon (Department of Immunology - St James's Hospital,  
484 James's Street, Dublin – Ireland), Ms Fiona O'Rourke, Ms Yvonne Lynagh, Ms Martina Kelly  
485 and Dr Brendan Crowley (Department of Microbiology - St James's Hospital, James's Street,  
486 Dublin – Ireland) for their contributions recruiting samples, collecting data from Healthcare  
487 workers (St James's Hospital) and analysing the samples.

488

## 489 **FINANCIAL SUPPORT**

490 This work was supported by the Science Foundation Ireland (SFI) COVID-19 Rapid  
491 Response Funding Call, proposal ID 20/COV/0023 and 20/COV/0048. Mass spectrometry



492 facilities were funded by a Science Foundation Ireland infrastructure award to SD  
493 ([12/RI/2346\(3\)](#)).

494

#### 495 **CONFLICT OF INTEREST**

496 None.

497

#### 498 **SUPPLEMENTARY FILE**

499 Supplementary file data archive available on the Cambridge University Press - Cambridge  
500 Core website.

501

#### 502 **REFERENCES**

- 503 (1) **Zhu N, et al.** A Novel Coronavirus from Patients with Pneumonia in China, 2019. *N*  
504 *Engl J Med* 2020; **382**(8): 727-733.
- 505 (2) **Cui J, Li F, Shi ZL.** Origin and evolution of pathogenic coronaviruses. *Nat Rev*  
506 *Microbiol* 2019; **17**(3): 181-192.
- 507 (3) Organization WH. Coronavirus disease (COVID-19) pandemic. In:  
508 <https://covid19.who.int/>, 2021.
- 509 (4) **Letko M, Marzi A, Munster V.** Functional assessment of cell entry and receptor  
510 usage for SARS-CoV-2 and other lineage B betacoronaviruses. *Nat Microbiol* 2020; **5**(4):  
511 562-569.
- 512 (5) **V'Kovski P, et al.** Coronavirus biology and replication: implications for SARS-CoV-  
513 2. *Nat Rev Microbiol* 2021; **19**(3): 155-170.
- 514 (6) **Corman VM, et al.** Detection of 2019 novel coronavirus (2019-nCoV) by real-time  
515 RT-PCR. *Euro Surveill* 2020; **25**(3).
- 516 (7) **Zhang W, et al.** Molecular and serological investigation of 2019-nCoV infected  
517 patients: implication of multiple shedding routes. *Emerg Microbes Infect* 2020; **9**(1): 386-  
518 389.
- 519 (8) **Kevadiya BD, et al.** Diagnostics for SARS-CoV-2 infections. *Nat Mater* 2021.
- 520 (9) **Coronaviridae Study Group of the International Committee on Taxonomy of V.**  
521 The species Severe acute respiratory syndrome-related coronavirus: classifying 2019-nCoV  
522 and naming it SARS-CoV-2. *Nat Microbiol* 2020; **5**(4): 536-544.
- 523 (10) **Kohmer N, et al.** The Comparative Clinical Performance of Four SARS-CoV-2  
524 Rapid Antigen Tests and Their Correlation to Infectivity In Vitro. *J Clin Med* 2021; **10**(2).
- 525 (11) Niamh Allen UNR, Niall Conlon, Annamaria Ferenczi, Antonio Isidro Carrion  
526 Martin, Lisa Domegan CW, Lorraine Doherty, Catherine Fleming, Colm Bergin. Prevalence  
527 of Antibodies to SARS-CoV-2 in Irish Healthcare Workers - PRECISE Study. In: (HPSC)  
528 HPSC, ed. [https://www.hpsc.ie/a-](https://www.hpsc.ie/a-z/respiratory/coronavirus/novelcoronavirus/research/precise/)  
529 [z/respiratory/coronavirus/novelcoronavirus/research/precise/](https://www.hpsc.ie/a-z/respiratory/coronavirus/novelcoronavirus/research/precise/), 2021.

- 530 (12) **Guo L, et al.** Profiling Early Humoral Response to Diagnose Novel Coronavirus  
531 Disease (COVID-19). *Clin Infect Dis* 2020; **71**(15): 778-785.
- 532 (13) **Zhao J, et al.** Antibody Responses to SARS-CoV-2 in Patients With Novel  
533 Coronavirus Disease 2019. *Clin Infect Dis* 2020; **71**(16): 2027-2034.
- 534 (14) **Long QX, et al.** Clinical and immunological assessment of asymptomatic SARS-  
535 CoV-2 infections. *Nat Med* 2020; **26**(8): 1200-1204.
- 536 (15) **Amanat F, et al.** A serological assay to detect SARS-CoV-2 seroconversion in  
537 humans. *Nat Med* 2020; **26**(7): 1033-1036.
- 538 (16) **Kissler SM, et al.** Projecting the transmission dynamics of SARS-CoV-2 through the  
539 postpandemic period. *Science* 2020; **368**(6493): 860-868.
- 540 (17) **Schnurra C, et al.** Comparison of the diagnostic sensitivity of SARS-CoV-2  
541 nucleoprotein and glycoprotein-based antibody tests. *J Clin Virol* 2020; **129**: 104544.
- 542 (18) **Armstrong S.** Testing times for the government's favoured antibody kit. *BMJ* 2020;  
543 **371**: m4440.
- 544 (19) **Mulchandani R, et al.** Accuracy of UK Rapid Test Consortium (UK-RTC) "AbC-19  
545 Rapid Test" for detection of previous SARS-CoV-2 infection in key workers: test accuracy  
546 study. *BMJ* 2020; **371**: m4262.
- 547 (20) **Deeks JJ, et al.** Antibody tests for identification of current and past infection with  
548 SARS-CoV-2. *Cochrane Database Syst Rev* 2020; **6**: CD013652.
- 549 (21) **Schlager B, Straessle A, Hafen E.** Use of anionic denaturing detergents to purify  
550 insoluble proteins after overexpression. *BMC Biotechnol* 2012; **12**: 95.
- 551 (22) **Waldron R, et al.** Characterisation of three novel beta-1,3 glucanases from the  
552 medically important house dust mite *Dermatophagoides pteronyssinus* (airmid). *Insect*  
553 *Biochem Mol Biol* 2019; **115**: 103242.
- 554 (23) **Liu W, et al.** Two-year prospective study of the humoral immune response of patients  
555 with severe acute respiratory syndrome. *J Infect Dis* 2006; **193**(6): 792-795.
- 556 (24) **Padoan A, et al.** IgA-Ab response to spike glycoprotein of SARS-CoV-2 in patients  
557 with COVID-19: A longitudinal study. *Clin Chim Acta* 2020; **507**: 164-166.
- 558 (25) **Woo PC, et al.** Differential sensitivities of severe acute respiratory syndrome (SARS)  
559 coronavirus spike polypeptide enzyme-linked immunosorbent assay (ELISA) and SARS  
560 coronavirus nucleocapsid protein ELISA for serodiagnosis of SARS coronavirus pneumonia.  
561 *J Clin Microbiol* 2005; **43**(7): 3054-3058.
- 562 (26) **Guan M, et al.** Recombinant protein-based enzyme-linked immunosorbent assay and  
563 immunochromatographic tests for detection of immunoglobulin G antibodies to severe acute  
564 respiratory syndrome (SARS) coronavirus in SARS patients. *Clin Diagn Lab Immunol* 2004;  
565 **11**(2): 287-291.
- 566 (27) **Chen S, et al.** Double-antigen sandwich ELISA for detection of antibodies to SARS-  
567 associated coronavirus in human serum. *Eur J Clin Microbiol Infect Dis* 2005; **24**(8): 549-  
568 553.
- 569 (28) **Hurst KR, Koetzner CA, Masters PS.** Identification of in vivo-interacting domains  
570 of the murine coronavirus nucleocapsid protein. *J Virol* 2009; **83**(14): 7221-7234.
- 571 (29) **Cui L, et al.** The Nucleocapsid Protein of Coronaviruses Acts as a Viral Suppressor  
572 of RNA Silencing in Mammalian Cells. *J Virol* 2015; **89**(17): 9029-9043.
- 573 (30) **Burbelo PD, et al.** Detection of Nucleocapsid Antibody to SARS-CoV-2 is More  
574 Sensitive than Antibody to Spike Protein in COVID-19 Patients. *medRxiv* 2020.
- 575 (31) **Du L, et al.** Recombinant receptor-binding domain of SARS-CoV spike protein  
576 expressed in mammalian, insect and E. coli cells elicits potent neutralizing antibody and  
577 protective immunity. *Virology* 2009; **393**(1): 144-150.
- 578 (32) **Berry JD, et al.** Neutralizing epitopes of the SARS-CoV S-protein cluster  
579 independent of repertoire, antigen structure or mAb technology. *MAbs* 2010; **2**(1): 53-66.

- 580 (33) **Premkumar L, et al.** The receptor binding domain of the viral spike protein is an  
581 immunodominant and highly specific target of antibodies in SARS-CoV-2 patients. *Sci*  
582 *Immunol* 2020; **5**(48).
- 583 (34) **Robbiani DF, et al.** Convergent antibody responses to SARS-CoV-2 in convalescent  
584 individuals. *Nature* 2020; **584**(7821): 437-442.
- 585 (35) **Liu W, et al.** Evaluation of Nucleocapsid and Spike Protein-Based Enzyme-Linked  
586 Immunosorbent Assays for Detecting Antibodies against SARS-CoV-2. *J Clin Microbiol*  
587 2020; **58**(6).
- 588 (36) **Rikhtegaran Tehrani Z, et al.** Performance of nucleocapsid and spike-based SARS-  
589 CoV-2 serologic assays. *PLoS One* 2020; **15**(11): e0237828.
- 590 (37) **Bullard J, et al.** Predicting infectious SARS-CoV-2 from diagnostic samples. *Clin*  
591 *Infect Dis* 2020.
- 592 (38) **Lumley SF, et al.** Antibody Status and Incidence of SARS-CoV-2 Infection in Health  
593 Care Workers. *N Engl J Med* 2021; **384**(6): 533-540.
- 594 (39) America LCo. EMERGENCY USE AUTHORIZATION (EUA) SUMMARY  
595 COVID-19 RT-PCR TEST. In. <https://www.fda.gov/media/136151/download>, 2020.
- 596 (40) **Khalaf K, et al.** SARS-CoV-2: Pathogenesis, and Advancements in Diagnostics and  
597 Treatment. *Front Immunol* 2020; **11**: 570927.
- 598 (41) **Sun B, et al.** Kinetics of SARS-CoV-2 specific IgM and IgG responses in COVID-19  
599 patients. *Emerg Microbes Infect* 2020; **9**(1): 940-948.

600

601

602

603

604

605

606

607

608

609

610

611

612

613

614 **Tables**

615

616 **Table 1.** Comparison of the performance of the commercially available Abbott ARCHITECT

617 test and the ELISA developed in the current study.

	<b>Commercial test</b>	<b>Npro ELISA IgG</b>	<b>S2Frag ELISA IgG</b>	<b>Npro/S2Frag ELISA IgG</b>
<b>Samples confirmed SARS-CoV-2 positive by RT-PCR</b>				
<b>N Positive</b>	35 (85.4%)	36 (85.7%)	37 (88%)	40 (95.2%)
<b>N Negative</b>	6 (14.6%)	6 (14.3%)	5 (12%)	2 (4.8%)
<b>N Total</b>	41	42	42	42
<b>Correlation coefficient</b>	-	1.0	0.27	0.55 ( $p \leq 0,01$ )
<b>Samples suspected for SARS-CoV-2</b>				
<b>N Positive</b>	6 (6.1%)	12 (12.2%)	6 (6.1%)	14 (14.3%)
<b>N Negative</b>	92 (93.9%)	86 (87.8%)	92 (93.9%)	84 (85.7%)
<b>N Total</b>	98	98	98	98
<b>Correlation coefficient</b>	-	0.42 ( $p \leq 0,01$ )	0.47( $p \leq 0,01$ )	0.38 ( $p \leq 0,01$ )

618

619

620 **Legends for Figures**

621

622 **Figure 1. Primary sequence of the SARS-CoV-2 proteins.** A: The amino acid sequence of  
623 the Spike protein (1273 residues). Residues in bold and underlined represent the signal  
624 peptide. Residues highlighted in black (319-542) represent the receptor-binding domain  
625 (RBD). Underlined residues delineate the S1-fragment (S1Frag, residue 1-686). Residues in  
626 red show the polybasic cleavage site that separates the S1 and S2-fragments (residue 686).  
627 Residues highlighted in grey comprise the S2-fragment (S2Frag, residue 687-1273). Residues  
628 highlighted in yellow and bold (residue 815) show the beginning of S2Prime sequence  
629 (residue 816-1273). Residues in bold represent the transmembrane and endo-domain (1214-  
630 1273). B: Schematic representation of the Spike protein and its various portions  
631 recombinantly expressed in the present study (see [15]). C: Nucleocapsid protein sequence  
632 (Npro, residue 2-1269) used for recombinant expression in *Escherichia coli*.

633

634 **Figure 2. Recombinant production and purification of Spike protein fragment 2**  
635 **(S2Frag).** A: Solubilisation of the S2Frag protein. P1, *E. coli* pellet after induction with IPTG  
636 for 4 hr at 30°C; S1, supernatant containing soluble proteins after pellet digestion with 0.1  
637 mg/mL of lysozyme; S2, supernatant containing insoluble proteins after pellet digestion with  
638 lysis buffer containing 1% SDS. B: S2Frag purification over Ni-NTA beads column. ST,  
639 supernatant total diluted; FT, column flow through; W, washes; E, eluted protein; M,  
640 Molecular weight marker in kDa. C. 4-20% SDS-PAGE analysis of recombinant SARS-CoV-  
641 2 nucleocapsid protein (Npro) following HisTrap HP columns.

642

643 **Figure 3. The determination of cut-off values for positive and negative results by**  
644 **ELISA.** Forty-two sera samples from patients with a positive SARS-CoV-2 diagnosis by  
645 RT-PCR and 37 sera samples stored in a blood bank prior to SARS-CoV-2 were tested by  
646 ELISA to determine the cut-off values for a positive or negative result for antibodies against  
647 Npro or S2frag. Pos: Positive. Neg: Negative.

648

649 **Figure 4. Antibodies against Npro or S2frag detected in sera from individuals**  
650 **confirmed positive for SARS-CoV-2 infection by RT-PCR, or suspected of SARS-CoV-2**  
651 **infection.** (A) Sera from 42 RT-PCR positive SARS-CoV-2 patients were tested for  
652 antibodies against Npro and S2Frag by the ELISA antibody test developed in this study. R  
653 square: 0.3132. (B) Sera from 98 suspected SARS-CoV-2 individuals were tested for  
654 antibodies against Npro and S2Frag. R square: 0.4704. (■ sera were negative for antibodies  
655 against both Npro and S2frag by ELISA; ▲ sera were positive for antibodies against Npro  
656 only by ELISA; ◆ sera were positive for antibodies against S2frag only by ELISA; ● sera  
657 were positive for antibodies against both Npro and S2frag by ELISA). Individual results for  
658 Npro and S2Frag ELISA presented as Optical density (OD 450 nm) divided by the calculated  
659 cut-off (CO). The cut-off value for each antigen is indicated by the dotted line.

660

661 **Figure 5. Western blots representative of samples showing the presence and absence of**  
662 **antibodies to Npro and S2frag in individuals positive for SARS-CoV-2.** Sera were  
663 assayed by Western blot to detect antibodies against Npro (N) and S2frag (S). A:  
664 Recombinant proteins resolved in a 4-12% SDS-PAGE and stained with Coomassie-blue. B:  
665 Western Blot control performed using a monoclonal mouse anti-polyhistidine antibody

666 (1:10,000) (Sigma-Aldrich) as a primary antibody followed by incubation with a secondary  
667 antibody alkaline phosphatase conjugated goat to mouse-anti-IgG diluted 1:5,000 (Sigma-  
668 Aldrich). C-F: The antibodies response to Npro and S2frag of different individuals positive  
669 for SARS-CoV-2. Individual ELISA tests results are shown for each sample as positive or  
670 negative for SARS-CoV-2.

671

672 **Figure 6. Contrasting results obtained by the commercially available Abbott**  
673 **ARCHITECT antibody test and the ELISA antibody test developed in the current**  
674 **study.** A and B, the agreement of SARS-CoV-2 diagnostic of 42 RT-PCR positive SARS-  
675 CoV-2 individuals assessed using Npro and S2frag ELISA test or the commercially available  
676 Abbott ARCHITECT antibody test. C and D, the agreement of SARS-CoV-2 diagnostic of 98  
677 suspected SARS-CoV-2 individuals assessed using Npro and S2frag ELISA test or the  
678 commercially available Abbott ARCHITECT antibody test. Samples were categorised  
679 according to the positive or negative result of the commercially available Abbott  
680 ARCHITECT test. Individual results for Npro and S2Frag ELISA test presented as optical  
681 density (OD 450 nm) divided by the calculated cut-off (CO) (■ sera were negative for  
682 antibodies by ELISA; ● sera were positive for antibodies by ELISA). The cut-off value for  
683 each antigen is indicated by the dotted line.

684

685 **Figure 7. Variation of the antibody response to SARS-CoV-2 antigens in COVID-19**  
686 **hospitalised patients.** A, COVID-19 hospital patients plasma samples were tested to their  
687 immune response to: (A) Nucleocapsid protein (Npro) and (B) Subunit 2 of spike protein  
688 (S2Frag) in ELISA assays. The antibody response of each patient was assessed at two

689 different time points. Samples were categorised according to the day after onset of symptoms  
690 the first plasma sample was obtained, represented in the graphic by periods. The antibody  
691 levels (OD/CO) of the two samples are compared in the graphic: Triangles represent the first  
692 sample and circles represent the second sample collected. Patient code is presented next to  
693 the antibody level of the second sample. In between parentheses the number of days after  
694 onset of symptoms that the second plasma sample was obtained. OD: Optical density at 450  
695 nm. CO: Cut-off calculated for the specific test. The cut-off value for each antigen is  
696 indicated by the dotted line.

697

698

699

700

701

702

703

704

705

706

707

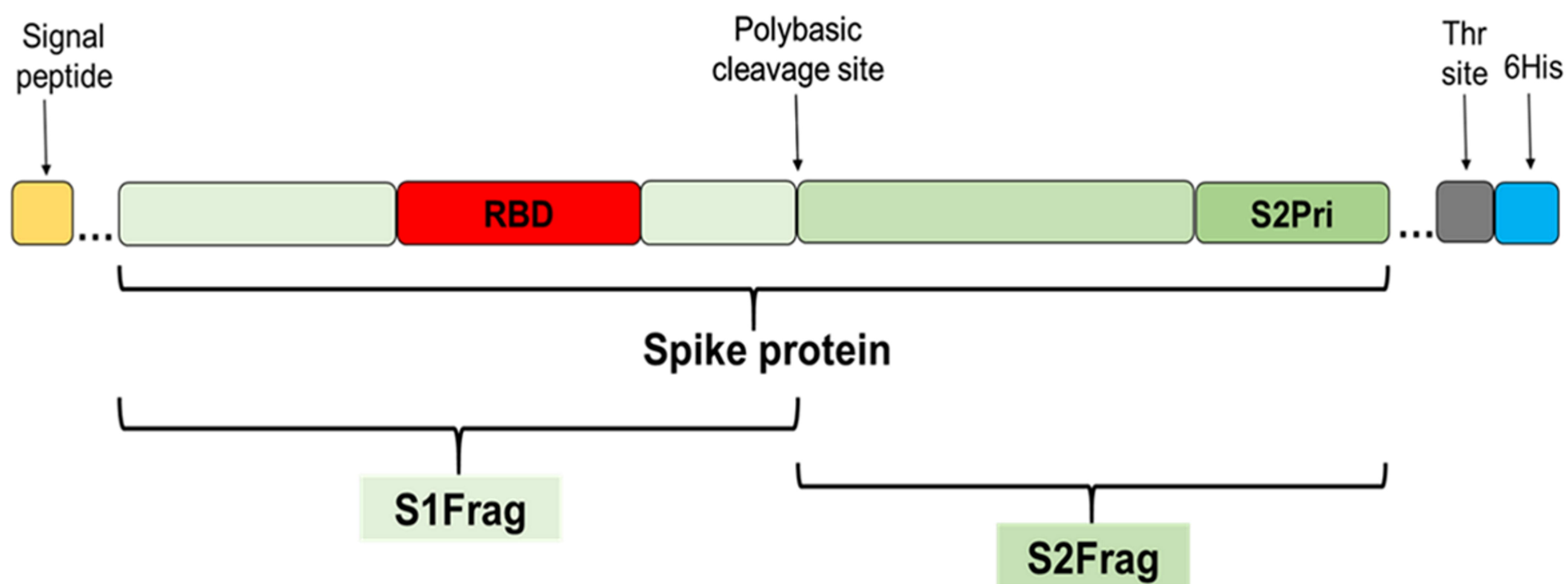
708



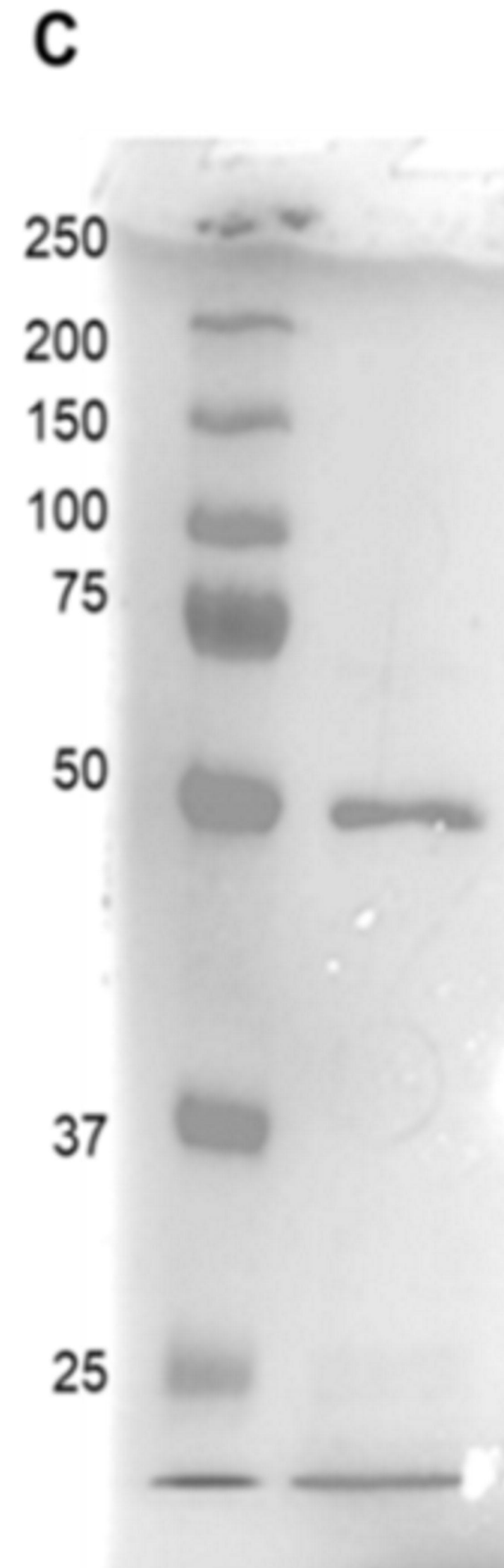
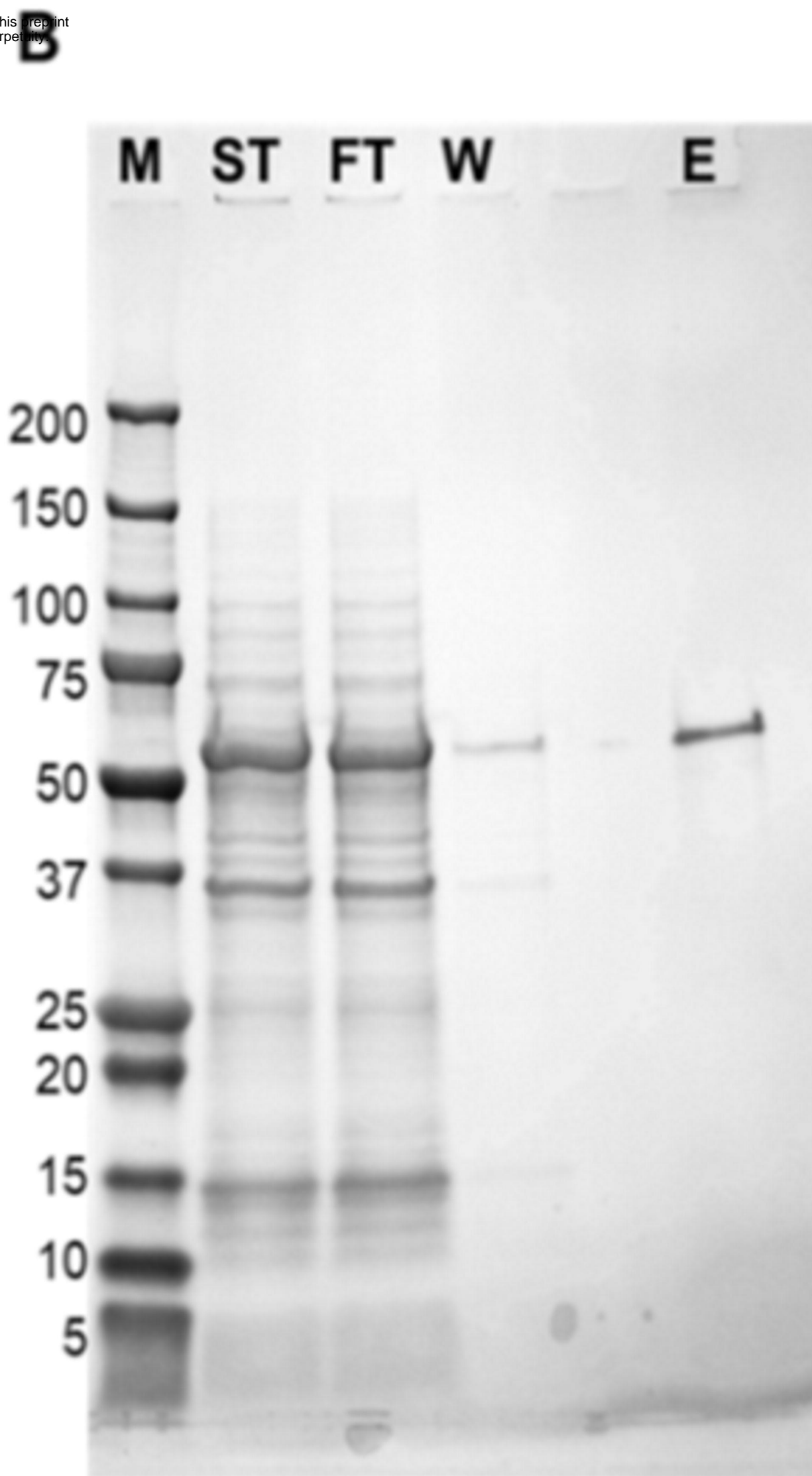
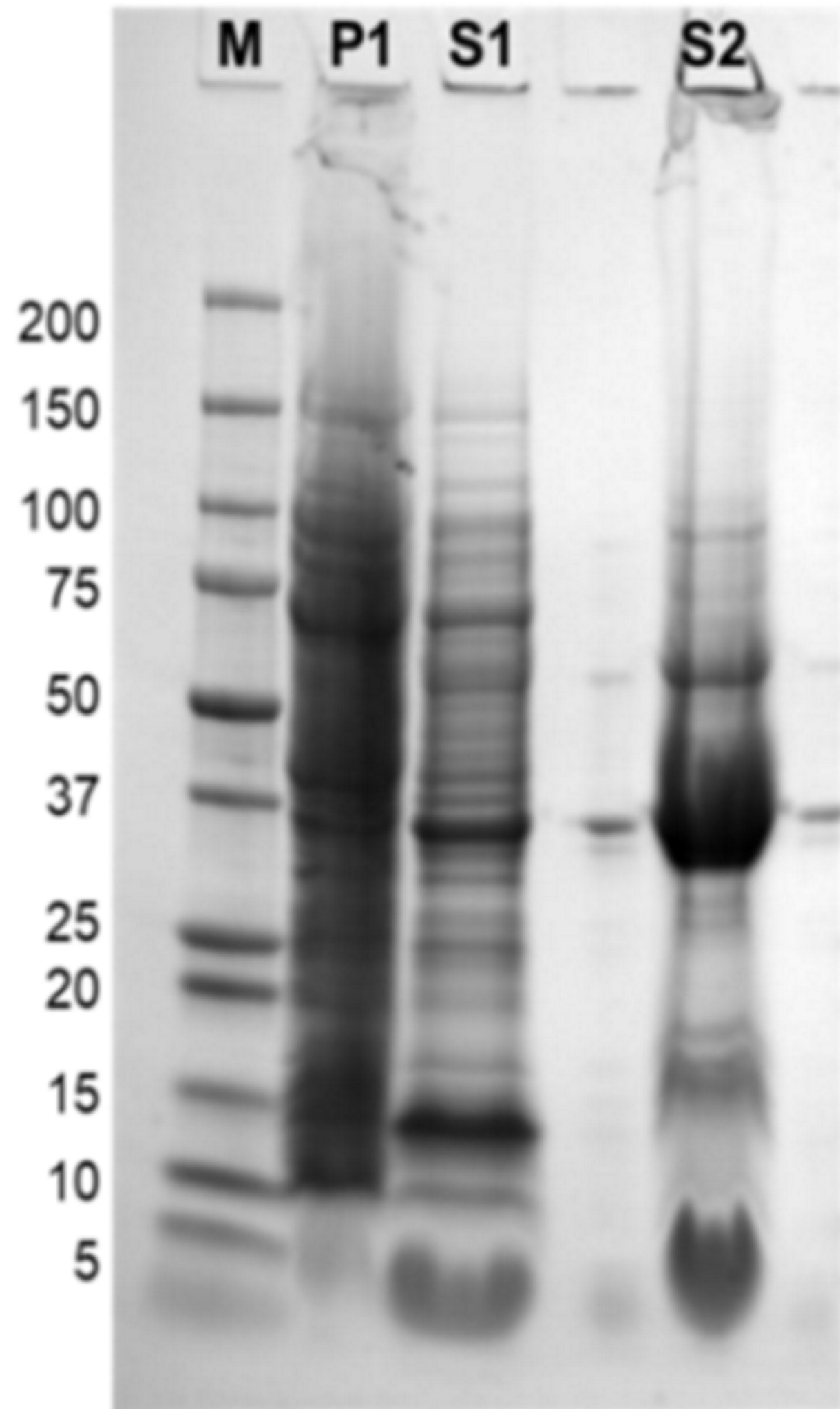
**A**

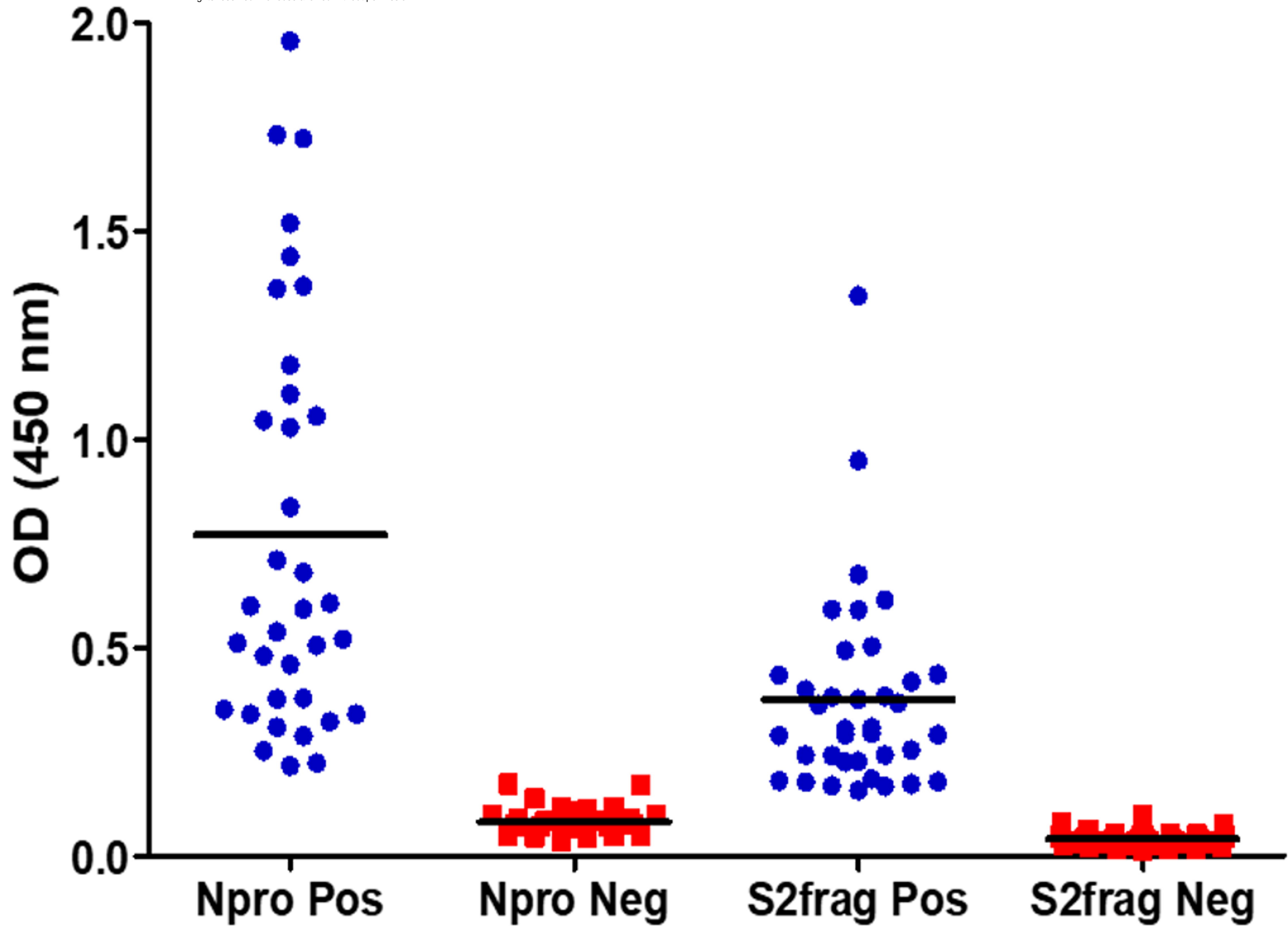
**MFVFLVLLPLVSSQC**VNLTTRTQLPPAYTNSFTRGVYYPDKVFRSSVLHSTQDLFLPFFSN  
 VTWFHAIHVSGTNGTKRFDNPVLPFNDGVYFASTEKSNIIRGWIFGTTLDSKTQSLIVNN  
 ATNVVIKVCEFQFCNDPFLGVYYHKNNKSWMESEFRVYSSANNCTFEYVSQPFLMDLEGK  
 QGNFKNLREFVFKNIDGYFKIYSKHTPINLVRDLPQGFSALEPLVDLPIGINITRFQTLLALH  
 RSYLTPGDSSSGWTAGAAAYVGYLQPRTFLKYNENGTITDAVDCALDPLSETKCTLKSF  
 TVEKGIYQTSNF**RVQPTESIVRFPNITNLCPFGEVFNATRFASVYAWNRRKRISNCVADYSVL**  
**YNSASFSTFKCYGVSPTKLNLCFTNVYADSFVIRGDEVROIAPGQTGKIADYNYKLPDDE**  
**TGCVIAWNSNNLDSKVGGNYNLYRLFRKSNLKPFERDISTEIQAGSTPCNGVEGFNCYF**  
**PLQSYGFQPTNGVGYQPYRVVLSFELLHAPATVCGPKKSTNLVKNKCVNFNFENGLTGTG**  
 VLTESNKKFLPFQQFGRDIADTTDAVRDPQTL EILDITPCSFGGVSVITPGTNTSNQVAVLYQ  
 DVNCTEVPVAIHADQLTPTWRVYSTGSNVFQTRAGCLIGAEHVNNSYECDIPGAGICASY  
 QTQTNSP**RRAR**SVASQSIAYTMSLGAENSVAYSNNNSIAIPTNFTISVTTEILPVSMTKTSVD  
 CTMYICGDSTECSNLLQYGSFCTQLNRALTGIAVEQDKNTQEVFAQVKQIYKTPPIKDFG  
 GFNFSQILPDPSKPSKR**SF**IEDLLFNKVTLADAGFIKQYGDCLGDIAARDLICAQKFNGLTV  
 LPPLLTDEMIAQYTSALLAGTITSGWTFGAGAALQIPFAMQMAYRFNGIGVTQNVLYENQ  
 KLIANQFNSAIGKIQDSLSTASALGKLQDVVNQNAQALNTLVKQLSSNFGAISSVLNDILS  
 RLDKVEAEVQIDRLITGRLQSLQTYVTQQLIRAAEIRASANLAATKMSECVLGQSKRVDFC  
 GKGYHLMSFPQSAPHGVVFLHVTYVPAQEKNFTTAPAICHDGKAHFPREGVFVSNGTHWF  
 VTQRNFYEPQIITDNTFVSGNCDVVIGIVNNTVYDPLQPELDSFKEELDKYFKNHTSPDV  
 DLGDISGINASVVNIQKEIDRLNEVAKNLNESLIDLQELGKYEQYIKWPWYIWLGFIAGLI  
 AIVMVTIMLCMISCCSCLKGCSCGSCCKFDEDDSEPVKGVKLHYT

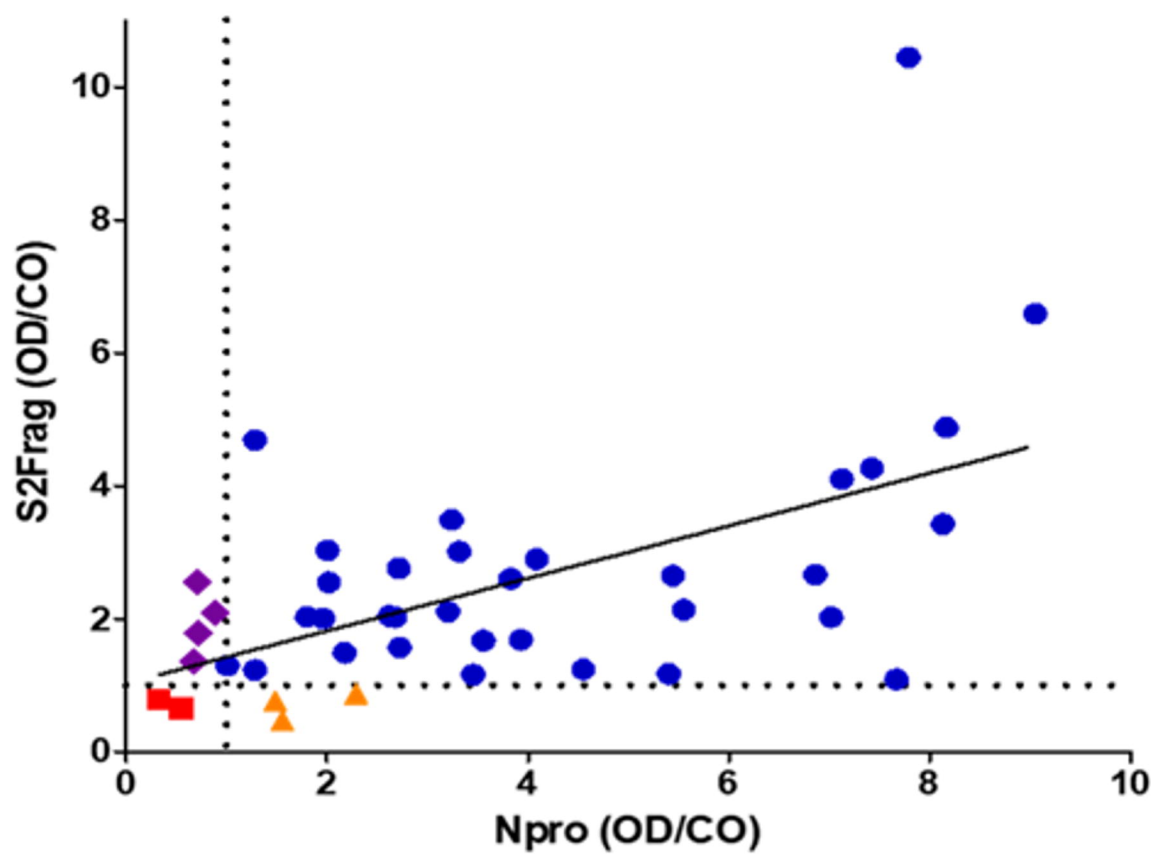
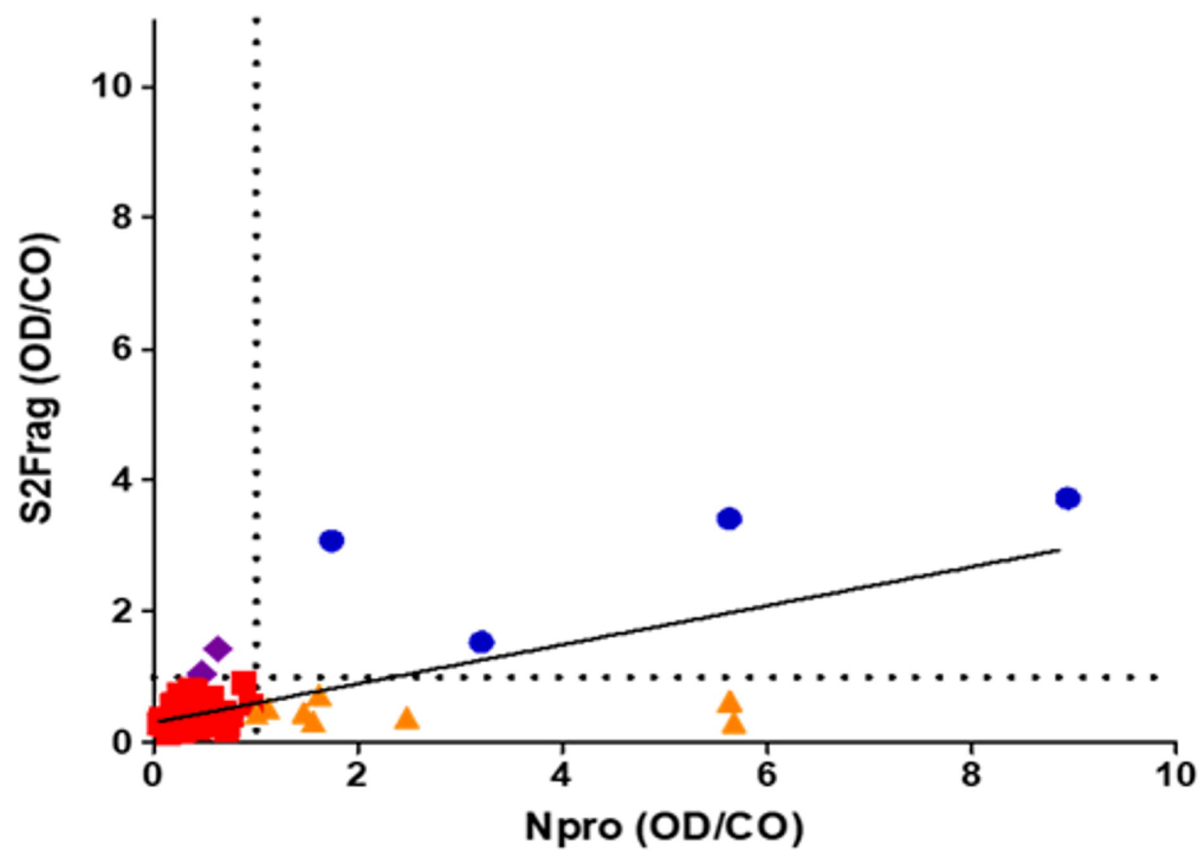
medRxiv preprint doi: <https://doi.org/10.1101/2021.04.07.21255024>; this version posted April 9, 2021. The copyright holder for this preprint (which was not certified by peer review) is the author/funder, who has granted medRxiv a license to display the preprint in perpetuity. All rights reserved. No reuse allowed without permission.

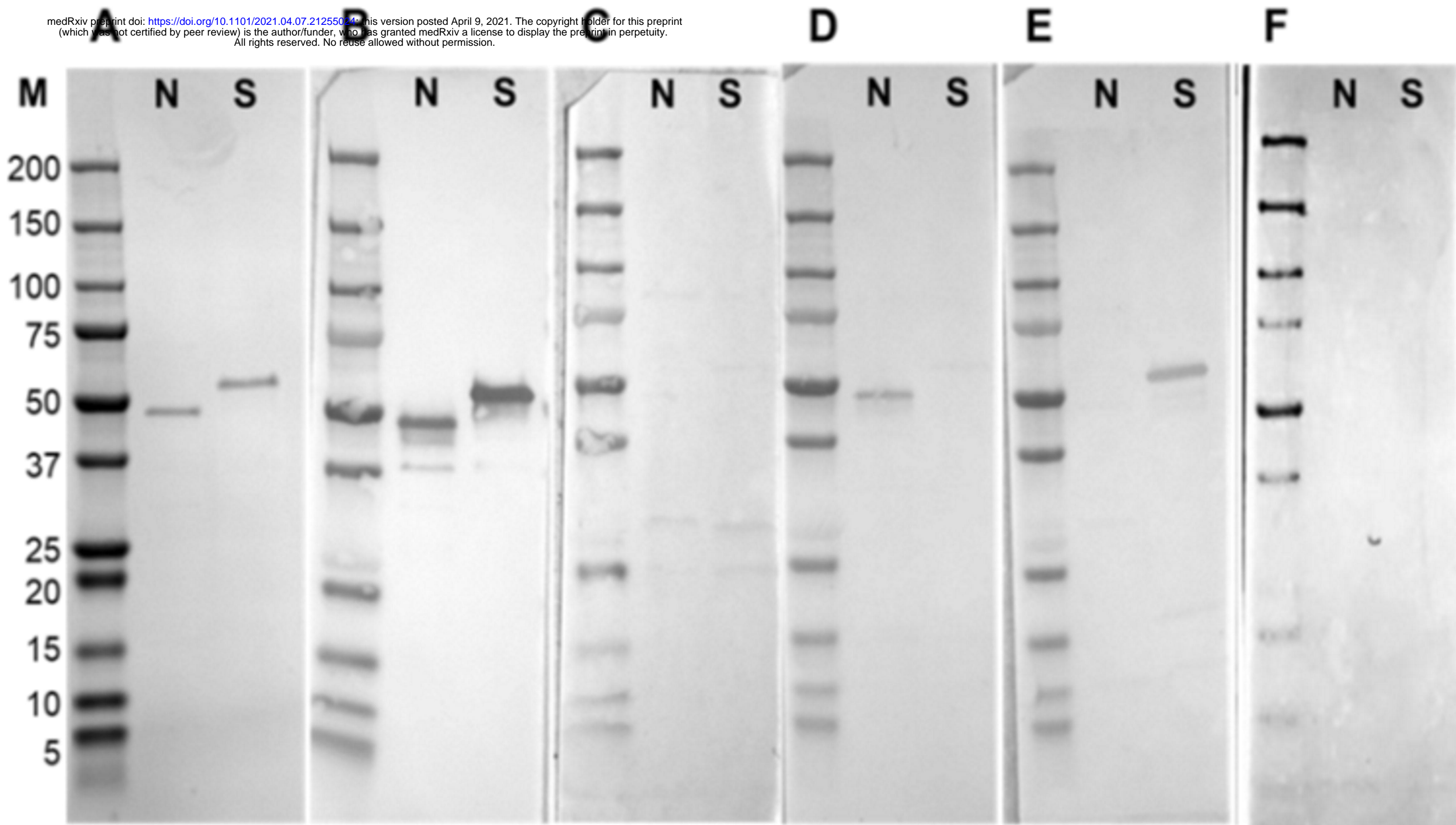
**B****C**

SDNGPQNQRNAPRITFGGSDSTGSNQNNGERSGARSKQRRPQGLPNNTASWFTALTQH GK  
 EDLKFPRGQGVPINTNSSPDDQIGYYRRATRRIRGGDGKMKDLSRWYFYLLGTGPEAGL  
 PYGANKDGIWVATEGALNTPKDHIGTRNPANNAIIVLQLPQGTTLPKGFYAEGSRGGSQA  
 SSRSSSRNRNNSRNSTPGSSRGTSARMAGNGGDAALALLLDRLNQLESKMSGKGQQQQ  
 GQTVTKKSAAEASKKPRQKRTATKAYNVTQAFGRRGPEQTQGNFGDQELIRQGTDYKHW  
 PQIAQFAPSASAFFGMSRIGMEVTPSGTWLTYTGAIKLDDKDPNFKDQVILLNKHIDAYKT  
 FPPTEPKKDKKKKADETQALPQRQKKQQTVTLLPAADLDDFSKQLQQSMSSADSTQA

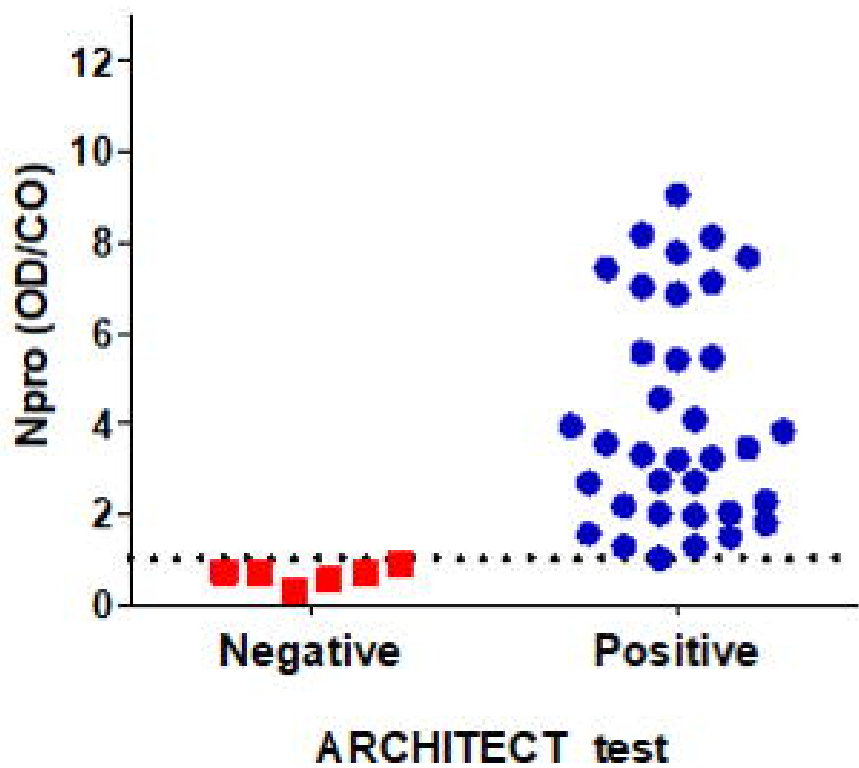
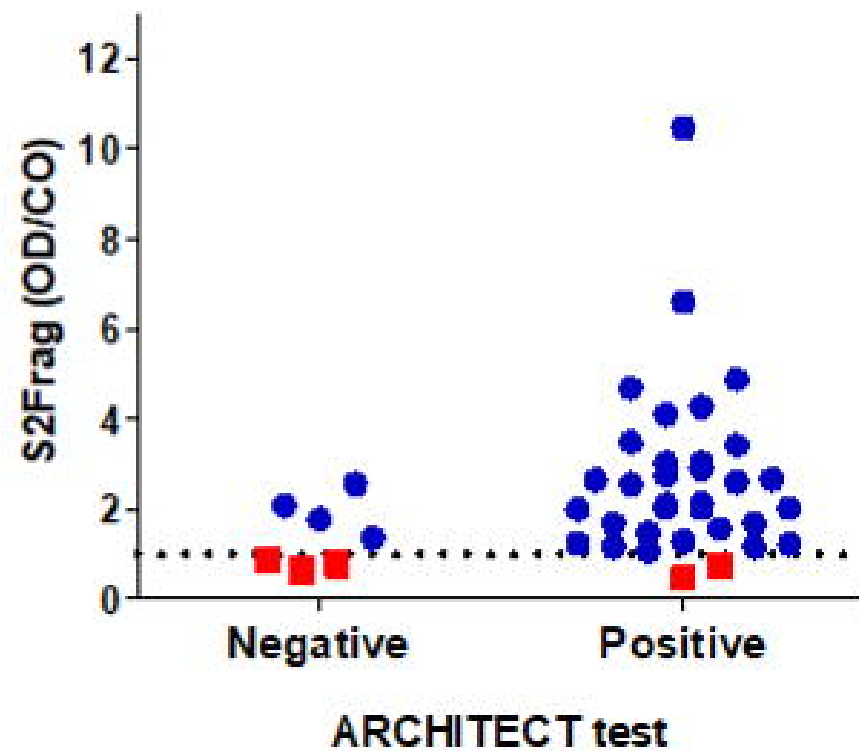
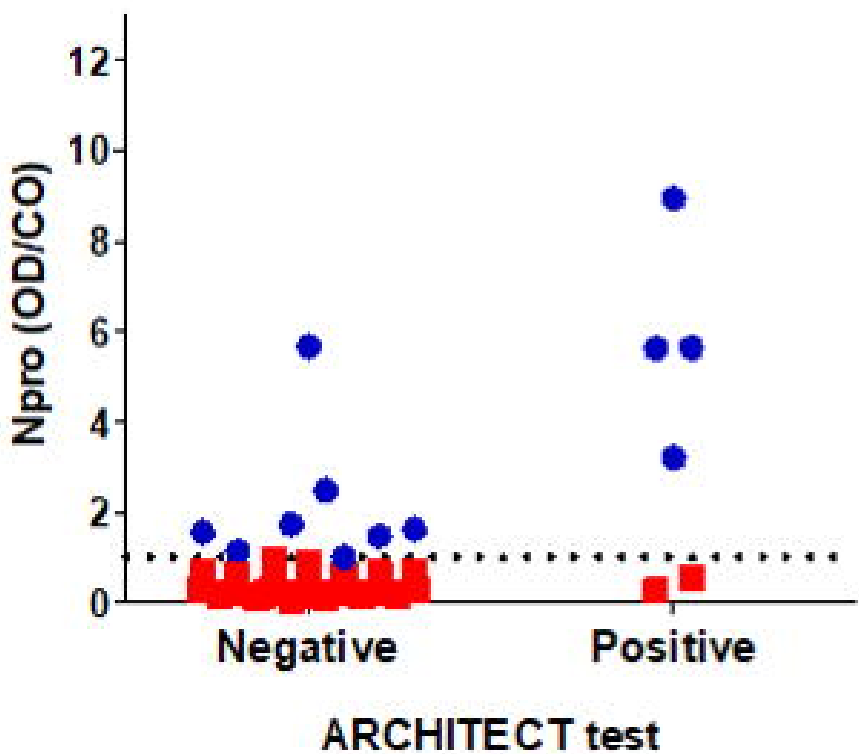
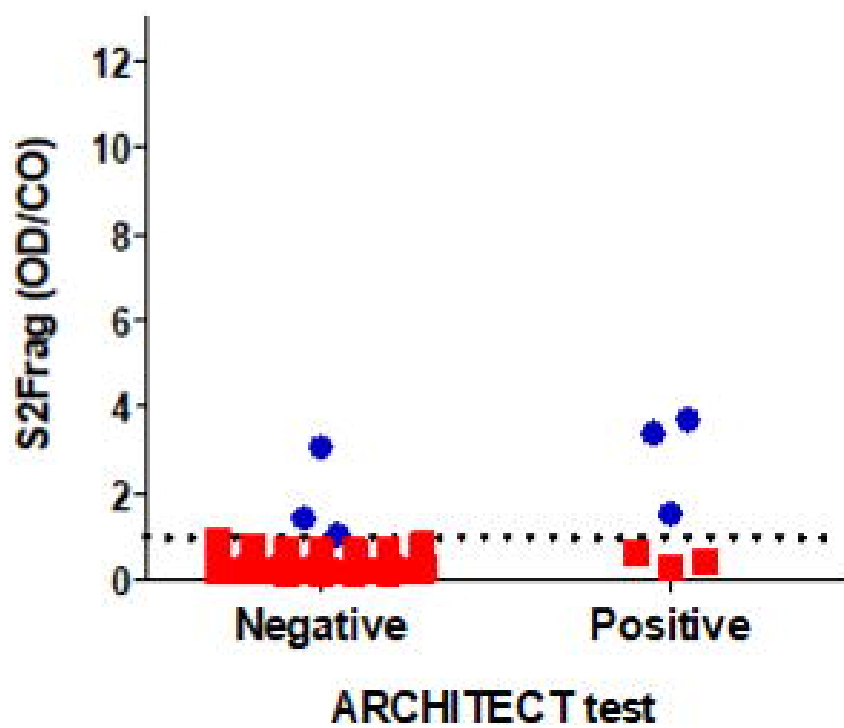


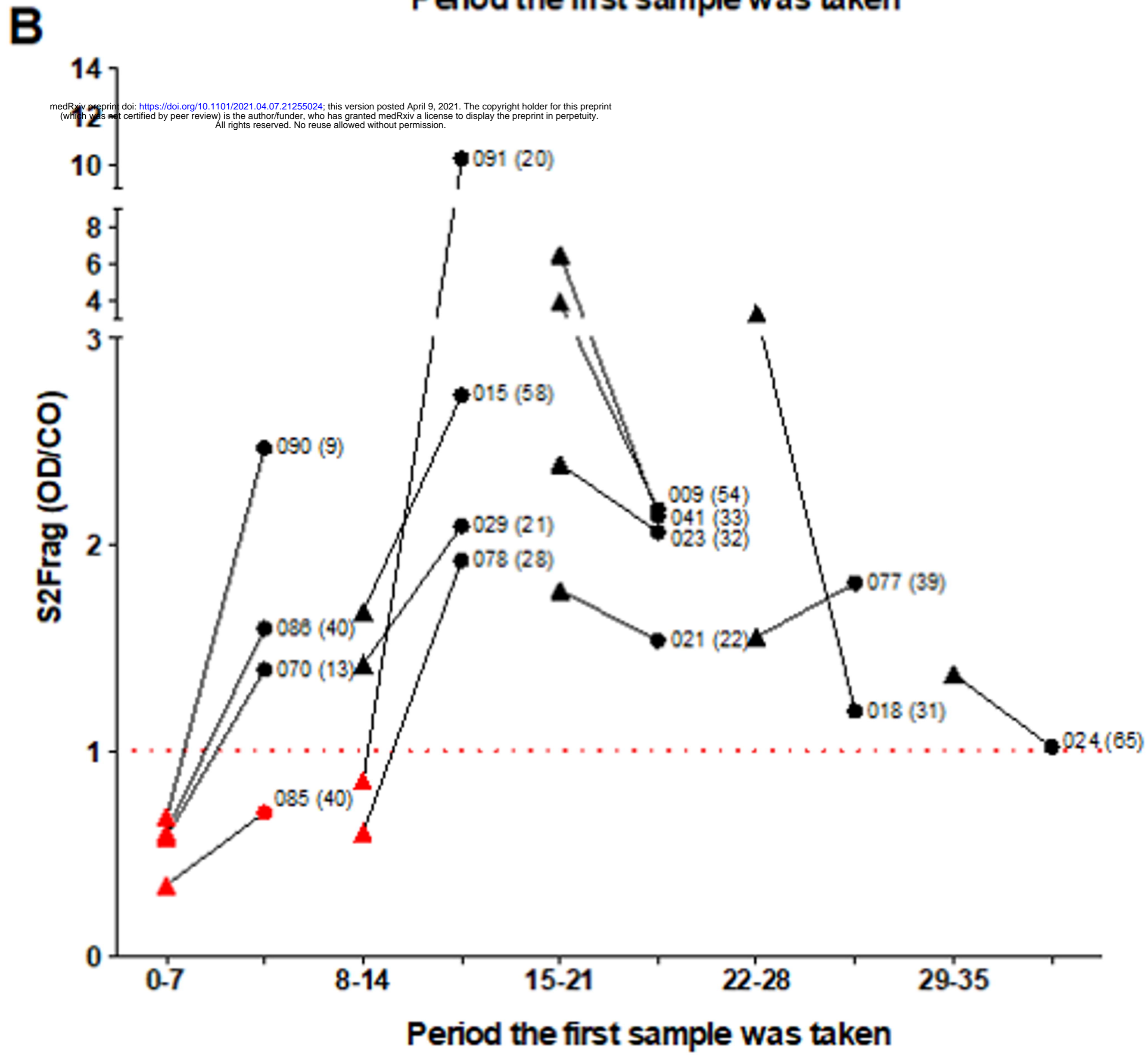
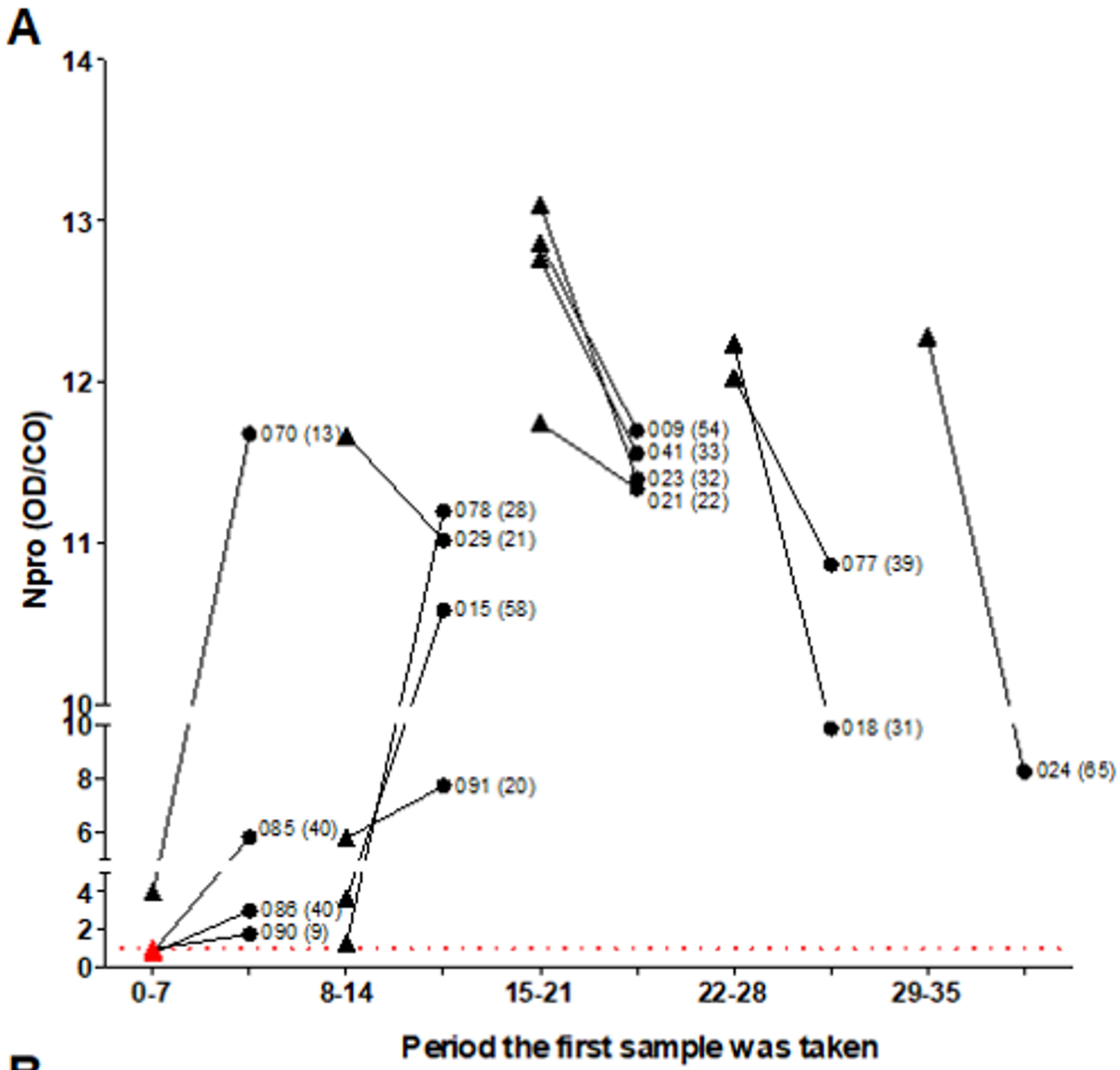


**A****B**



ELISA TEST	Result			
<b>Npro</b>	Negative	<b>Positive</b>	Negative	Negative
<b>S2Frag</b>	Negative	Negative	<b>Positive</b>	Negative
<b>Abbott</b>	<b>Positive</b>	Negative	Negative	Negative

**A****B****C****D**



medRxiv preprint doi: <https://doi.org/10.1101/2021.04.07.21255024>; this version posted April 9, 2021. The copyright holder for this preprint (which was not certified by peer review) is the author/funder, who has granted medRxiv a license to display the preprint in perpetuity. All rights reserved. No reuse allowed without permission.