

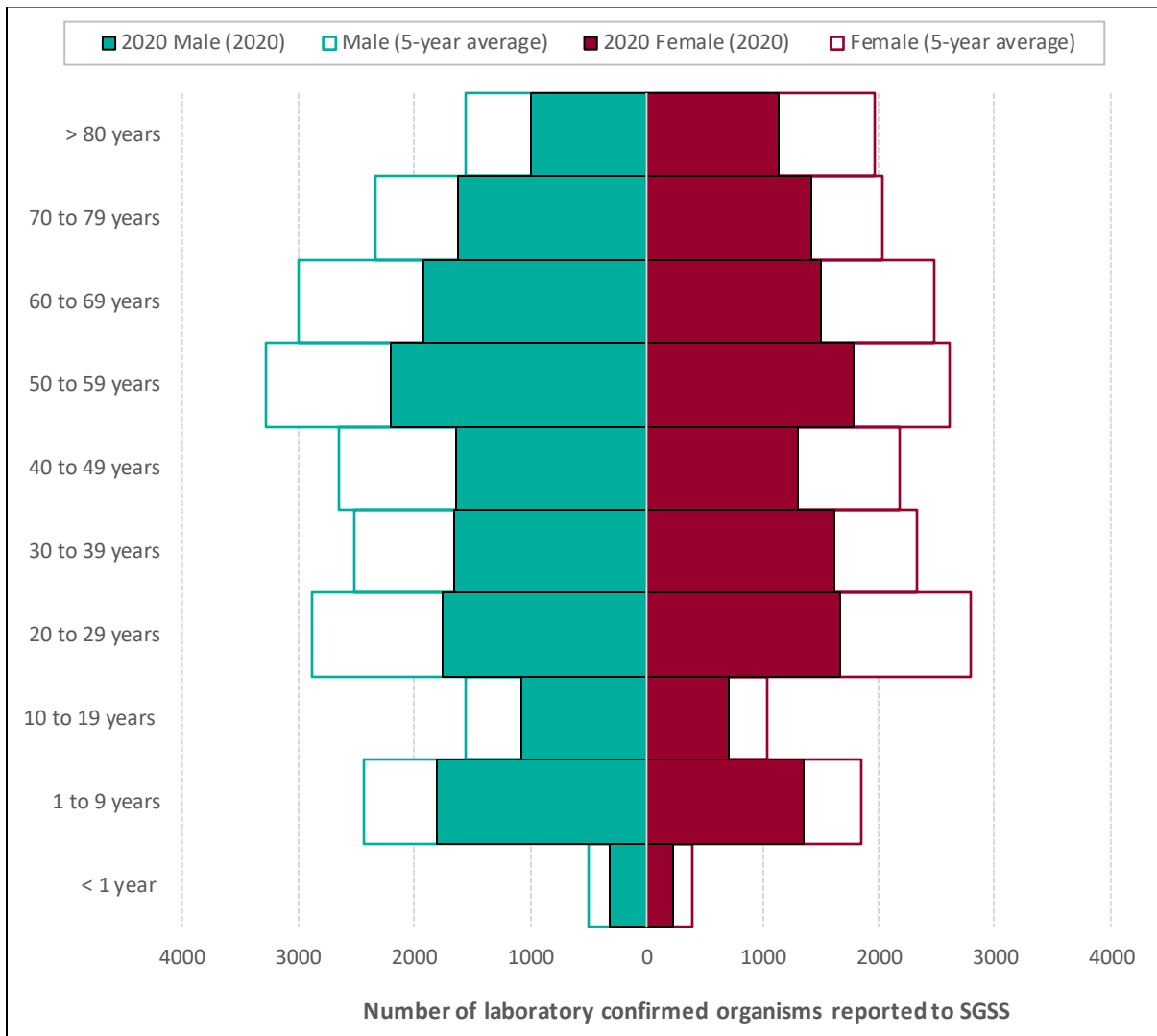
**Supplementary Figures**

**Supplementary Table 1 – Gastrointestinal outbreaks and GI pathogens<sup>‡</sup> reported to Public Health England between Week 1 and Week 31 2020 and the 5-year weekly average (95% confidence interval), by COVID-19 outbreak Phase**

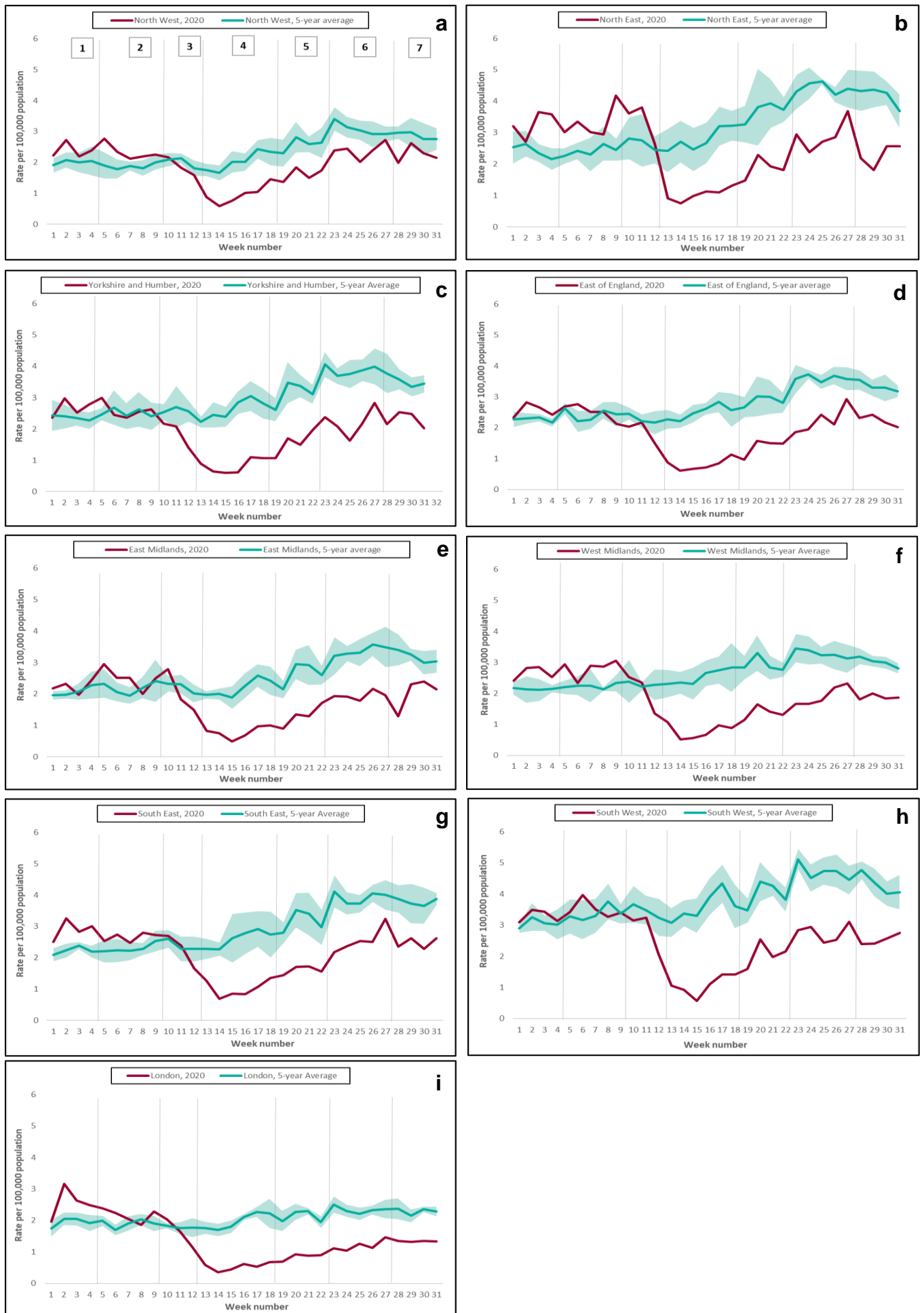
		Phase	1	2	3	4	5	6	7
		Week	1-4	5-9	10-12	13-18	19-22	23-27	28-31
			Pre-outbreak phase	Early outbreak	Pre-lockdown	Early Lockdown	Late Lockdown	Lockdown Easing	Further Easing
Gastrointestinal outbreaks	2020	465	510	273	109	46	50	91	
	2019	545	684	383	752	443	326	314	
	5 year average (95% CI)	489 (444 - 534)	651 (605 - 697)	454 (357 - 551)	667 (554 - 780)	350 (294 - 406)	292 (226 - 358)	305 (273 - 337)	
	% Change	-5%	-22%	-40%	-84%	-87%	-83%	-70%	
Viral outbreaks	2020	390	441	224	80	27	36	54	
	5-year average (95% CI)	417 (377-457)	558 (512-604)	391 (305-477)	555 (449-660)	281 (239-324)	225 (174-276)	229 (203-256)	
Bacterial outbreaks	2020	9	9	4	8	9	7	14	
	5-year average (95% CI)	11 (7-14)	12 (8-15)	7 (4-10)	18 (16-19)	18 (14-22)	18 (15-22)	24 (20-27)	
Parasitic outbreaks	2020	2	1	0	1	0	0	0	
	5-year average (95% CI)	4 (2-5)	3 (1-6)	4 (2-5)	12 (9-14)	7 (5-10)	3 (2-5)	3 (2-4)	
Care home Setting	2020	301	318	169	98	30	37	55	
	5-year average (95% CI)	324 (283-364)	402 (355-448)	273 (216-329)	429 (360-497)	205 (167-243)	156 (121-190)	167 (153-182)	
Healthcare Setting	2020	54	45	34	3	1	4	7	
	5-year average (95% CI)	62 (51-73)	89 (75-103)	55 (29-80)	85 (54-116)	32 (24-40)	28 (18-38)	25 (21-29)	
Educational Setting	2020	58	102	53	0	2	3	10	
	5-year average (95% CI)	66 (45-87)	107 (85-130)	86 (70-102)	77 (57-98)	62 (51-73)	61 (37-84)	51 (39-64)	
Food outlet Setting	2020	29	14	3	1	1	1	6	
	5-year average (95% CI)	10 (8-12)	18 (11-25)	13 (9-17)	23 (16-30)	14 (10-17)	8 (6-11)	13 (9-17)	
Custodial Setting	2020	6	28	1	0	0	1	1	
	5-year average (95% CI)	2 (1-3)	2 (0-3)	2 (1-3)	3 (1-4)	2 (0-3)	1 (1-2)	3 (2-5)	
Other Settings	2020	17	28	13	7	12	4	12	
	5-year average (95% CI)	25 (19-32)	34 (27-41)	25 (20-31)	51 (44-57)	36 (31-41)	38 (34-42)	45 (40-50)	
Laboratory confirmed GI organisms	2020	6023	7374	3520	2859	3284	4617	6205	
	2019	5041	6499	4180	8561	6967	8117	9877	
	5 year average (95% CI)	5016 (4721-5311)	6471 (5969-6973)	3943 (3591-4295)	8345 (7602-9088)	6553 (5829-7277)	7879 (7539-8219)	9303 (8746-9860)	
	% Change	20%	14%	-11%	-66%	-50%	-41%	-33%	

<sup>‡</sup> Organisms: Campylobacter, STEC O157, STEC Non-O157, Listeria, non-typhoidal Salmonella, typhoidal Salmonella, Shigella, Norovirus, Cryptosporidium and Giardia

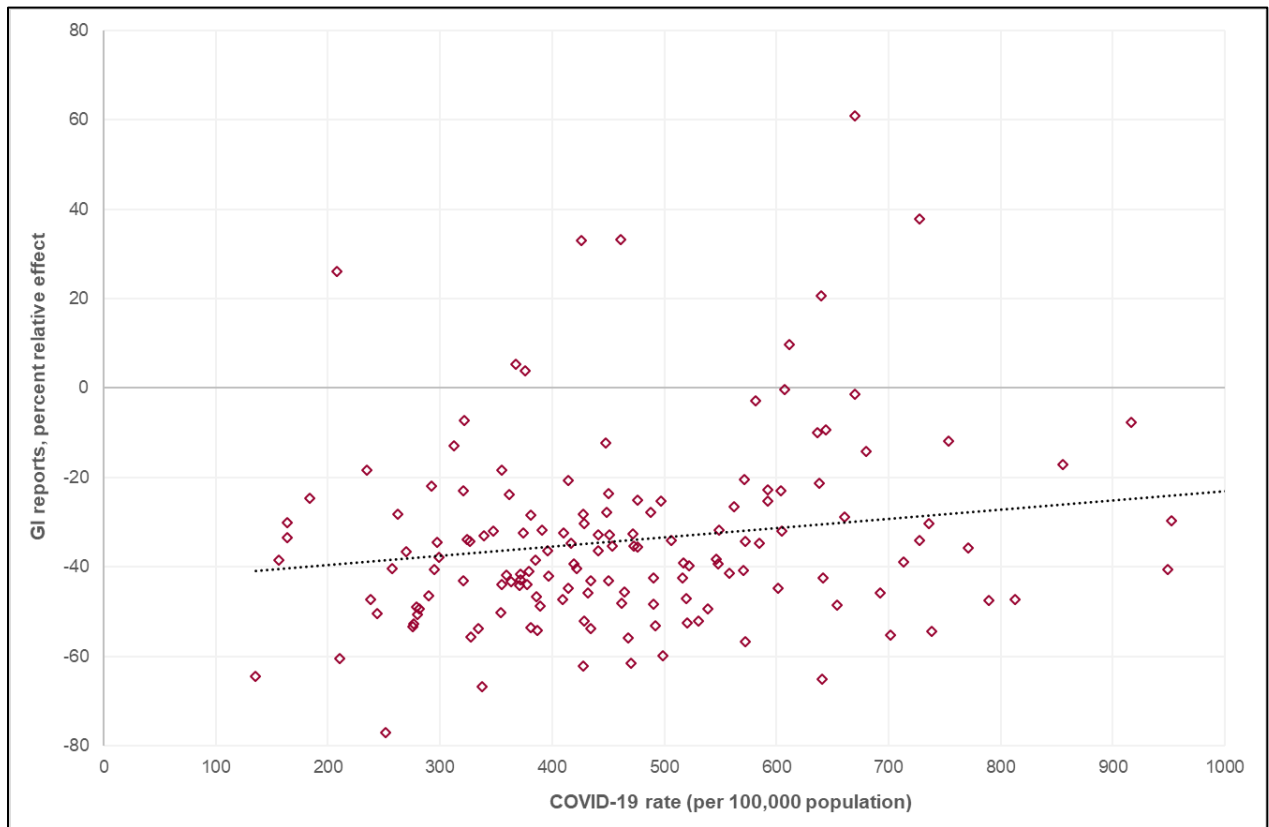
**Supplementary Figure 1 – Laboratory confirmed GI pathogens reported to Public Health England between Week 1 and Week 31 2020 and the 5-year weekly average, by age group and sex**



**Supplementary Figure 2 – Laboratory confirmed GI pathogens reported between Week 1 and Week 31 2020 and 5-year weekly average, by COVID-19 outbreak Phase and PHE region**

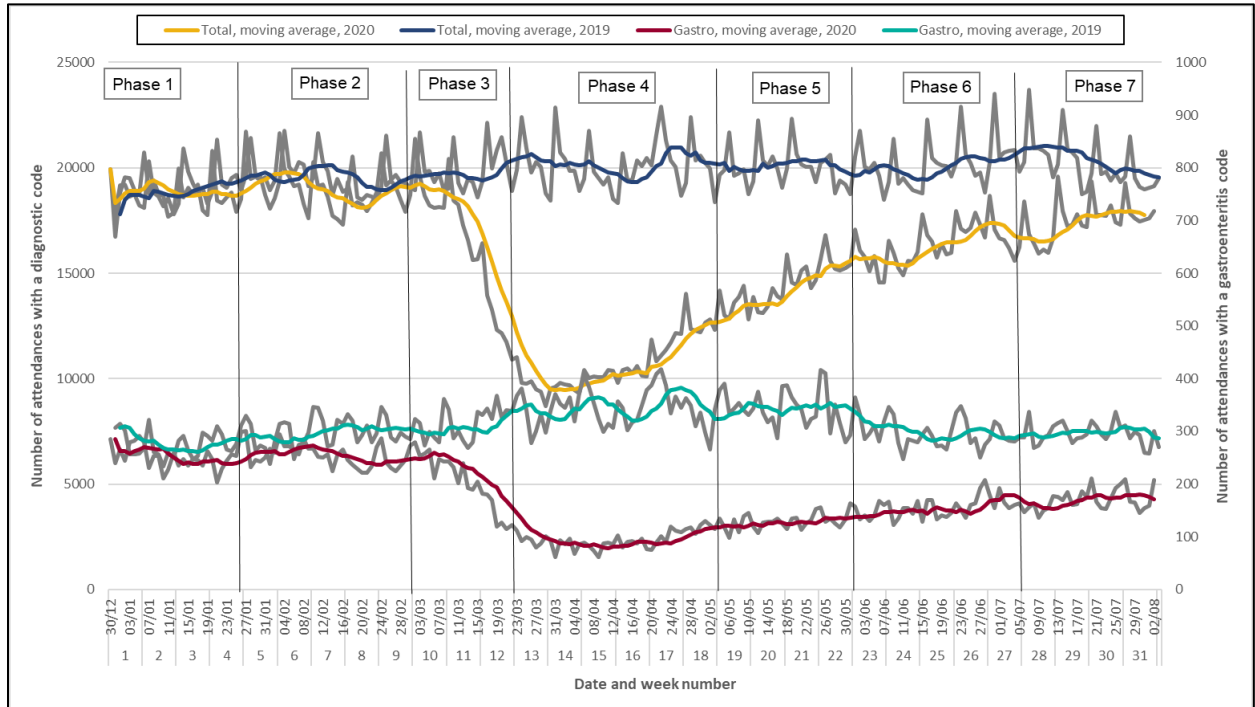


**Supplementary Figure 3 – Correlation between cumulative laboratory confirmed GI diagnoses (percentage relative effect between 2020 and the 5-year average) and cumulative COVID-19 rate for English Upper Tier Local Authorities\*, Phase 2 to Phase 7 of the COVID response**

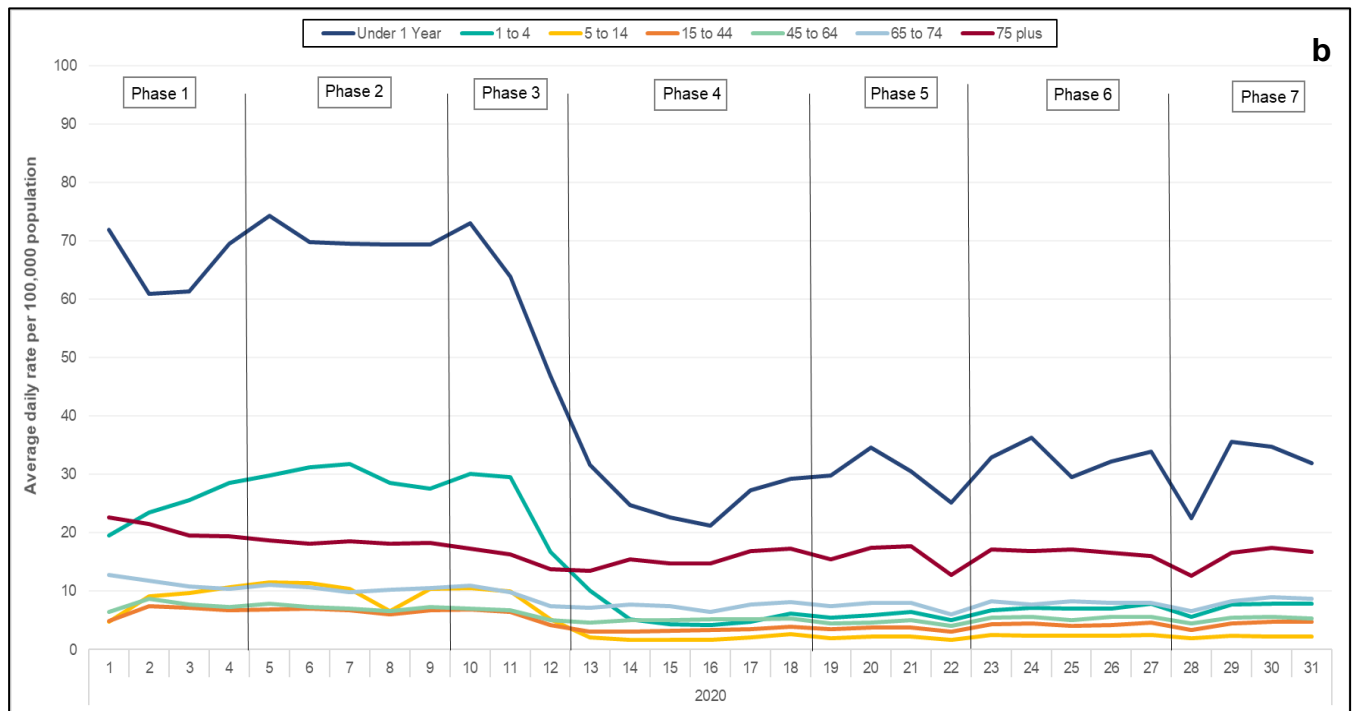
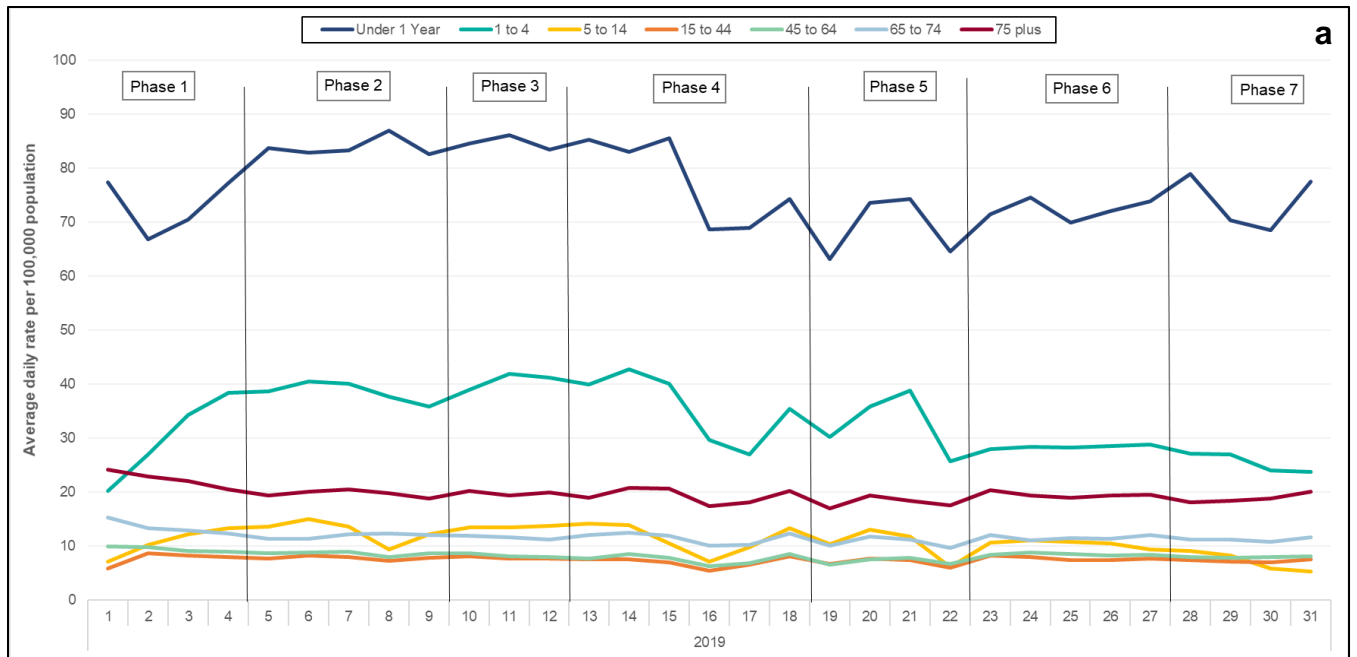


\*Graph excludes the Leicester Upper Tier Local Authority due to higher cumulative COVID-19 rate than other local authority areas up to 02 August 2020. Leicester was included in the Pearson's correlation analysis.

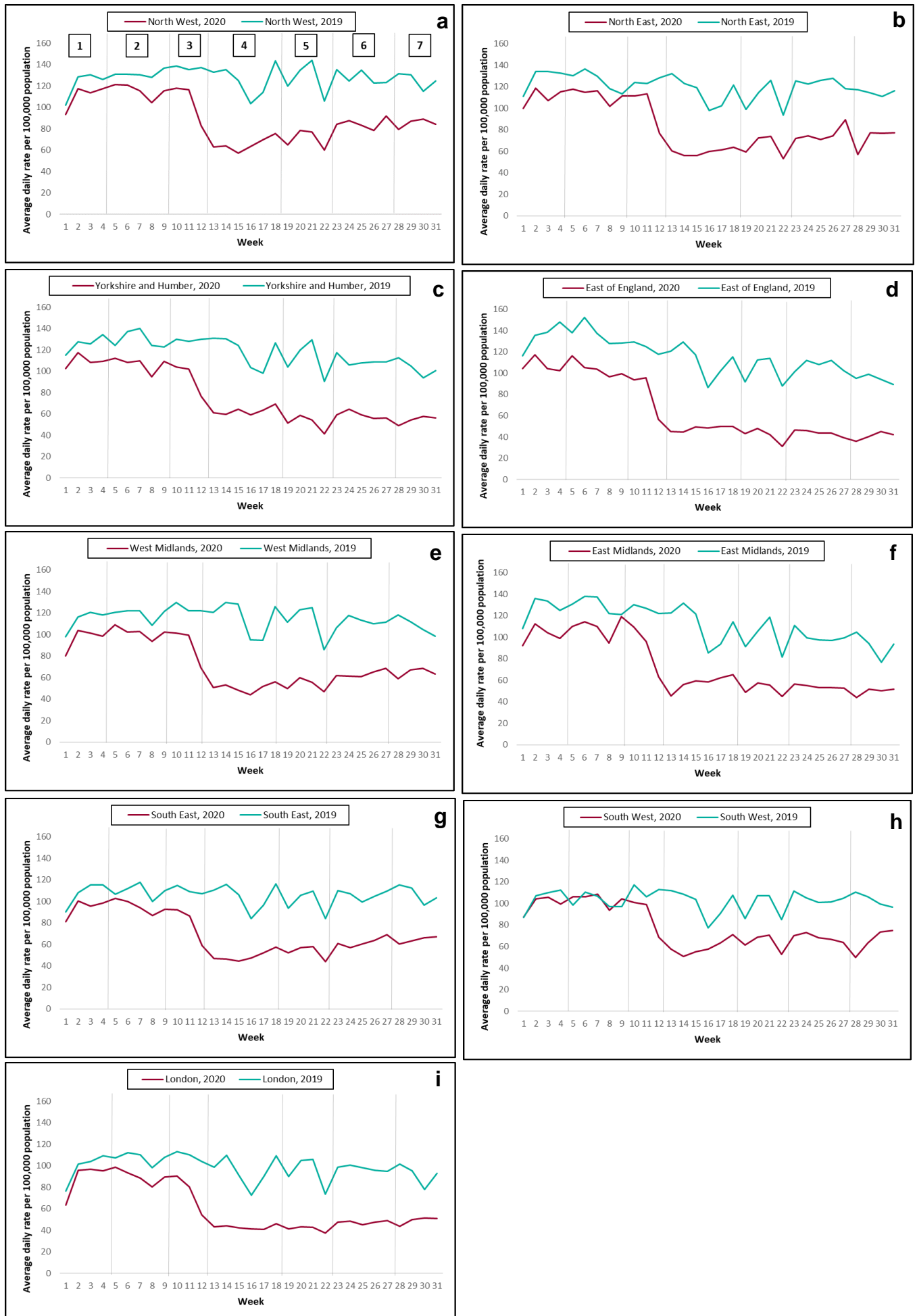
**Supplementary Figure 4 – Daily number of total attendances with a diagnostic code recorded across the Emergency Department Syndromic Surveillance network indicating the seven-day moving average, Phase 1 – 7 of the COVID-19 outbreak response, 2019 and 2020.**



**Supplementary Figure 5 -GP in hours average daily rate by week per 100,000 population for gastroenteritis consultations, COVID-19 outbreak Phase and age group, (a) 2019 and (b) 2020**

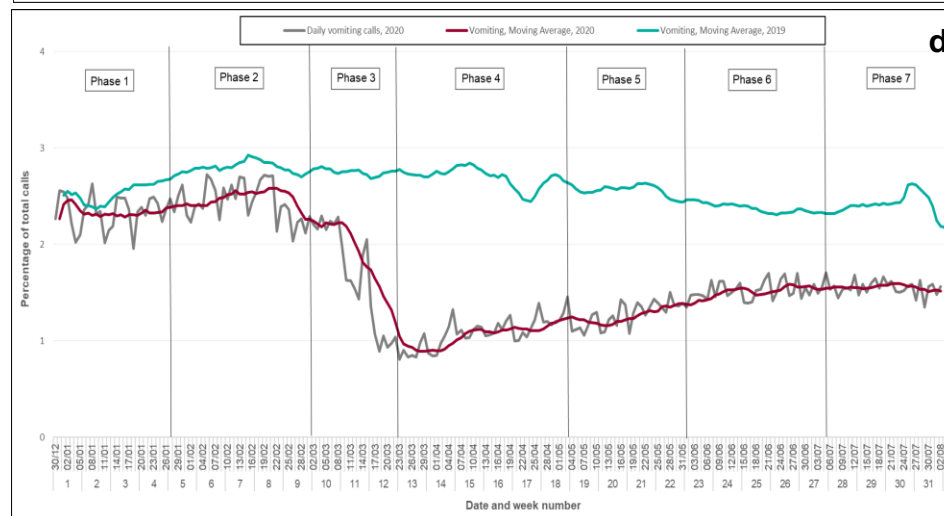
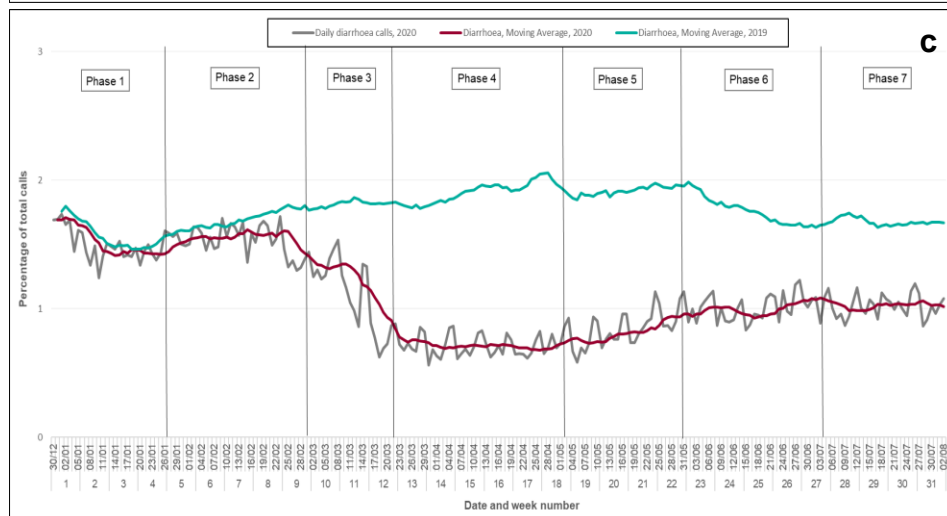
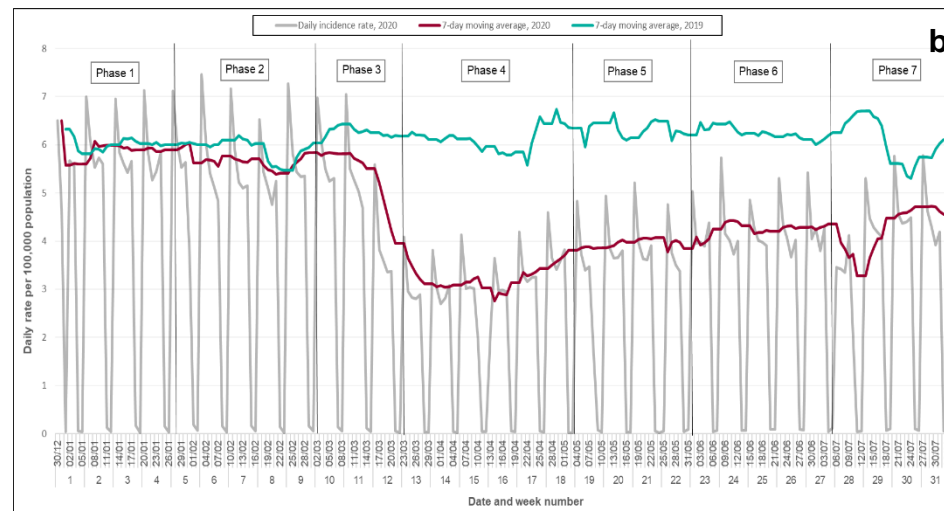
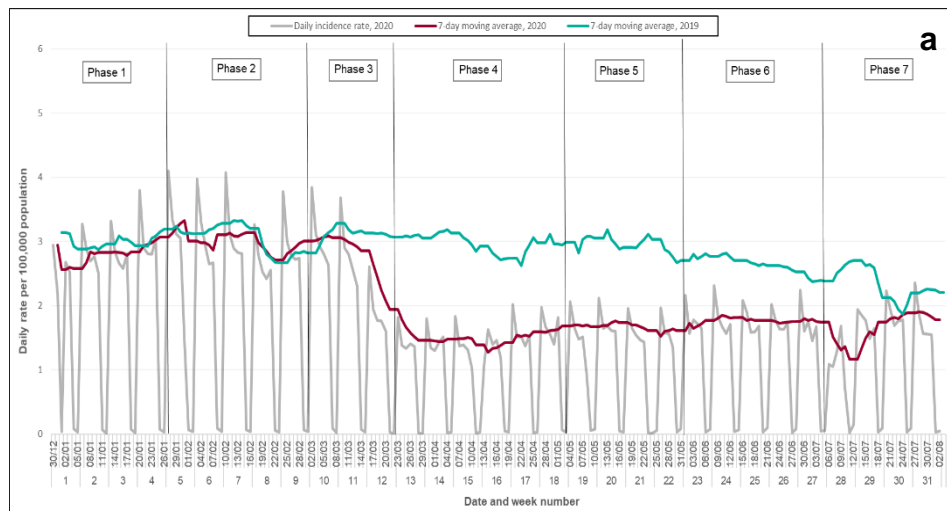


**Supplementary Figure 6 - GP in hours average daily rate by week per 100,000 population for gastroenteritis consultations, COVID-19 outbreak Phase and PHE region, 2019 and 2020**





**Supplementary Figure 7 – Daily GP-in hours incidence rate and 7-day moving average (adjusted for weekends and bank holidays) per 100,00 population for (a) vomiting and (b) diarrhoea and daily calls as a percentage of total calls and moving 7-day average for (c) ‘Diarrhoea’ calls and (d) ‘Vomiting’ calls**



**Supplementary Figure 8 – Google trend searches between 01/01/2017 and 02/08/2020 for (a) protective factors associated with GI illness and (b) key search phrases associated with GI illness, indicating the seven Phases of the COVID-19 response**

