

## Supplementary Materials

# Forecasting sub-national trends in COVID-19 vaccine uptake in the UK

A. de Figueiredo, PhD<sup>1,2†</sup>

<sup>1</sup>Department of Infectious Disease Epidemiology, London School of Hygiene and Tropical Medicine, London, UK

<sup>2</sup>Department of Mathematics, Imperial College London, London, UK

† [alex.defigueiredo@lshtm.ac.uk](mailto:alex.defigueiredo@lshtm.ac.uk)

These appendices contain a number of additional details and figures in support of Forecasted trends in COVID-19 vaccine acceptance across the UK: a large-scale cross-sectional spatial modelling study. The contents of these three appendices are detailed below.

<b>Forecasting sub-national trends in COVID-19 vaccine uptake in the UK</b> .....	<b>1</b>
<b>Appendix 1: Respondents' socio-econo-demographic background</b> .....	<b>2</b>
<b>Appendix 2: Supplementary figures</b> .....	<b>3</b>
<i>Mapping COVID-19 vaccine acceptance: unsure about accepting a COVID-19 vaccine</i> .....	<i>3</i>

## Appendix 1: Respondents' socio-econo-demographic background

The number (and percentage) of respondents within each socio-econo-demographic group (sex, age, highest education level, religious affiliation, ethnicity, employment status, and primary language) is shown in table S1. The number (and percentage) of each group replying to each of the four response options to “If a new coronavirus (COVID-19) vaccine became available, would you accept it?” is also shown.

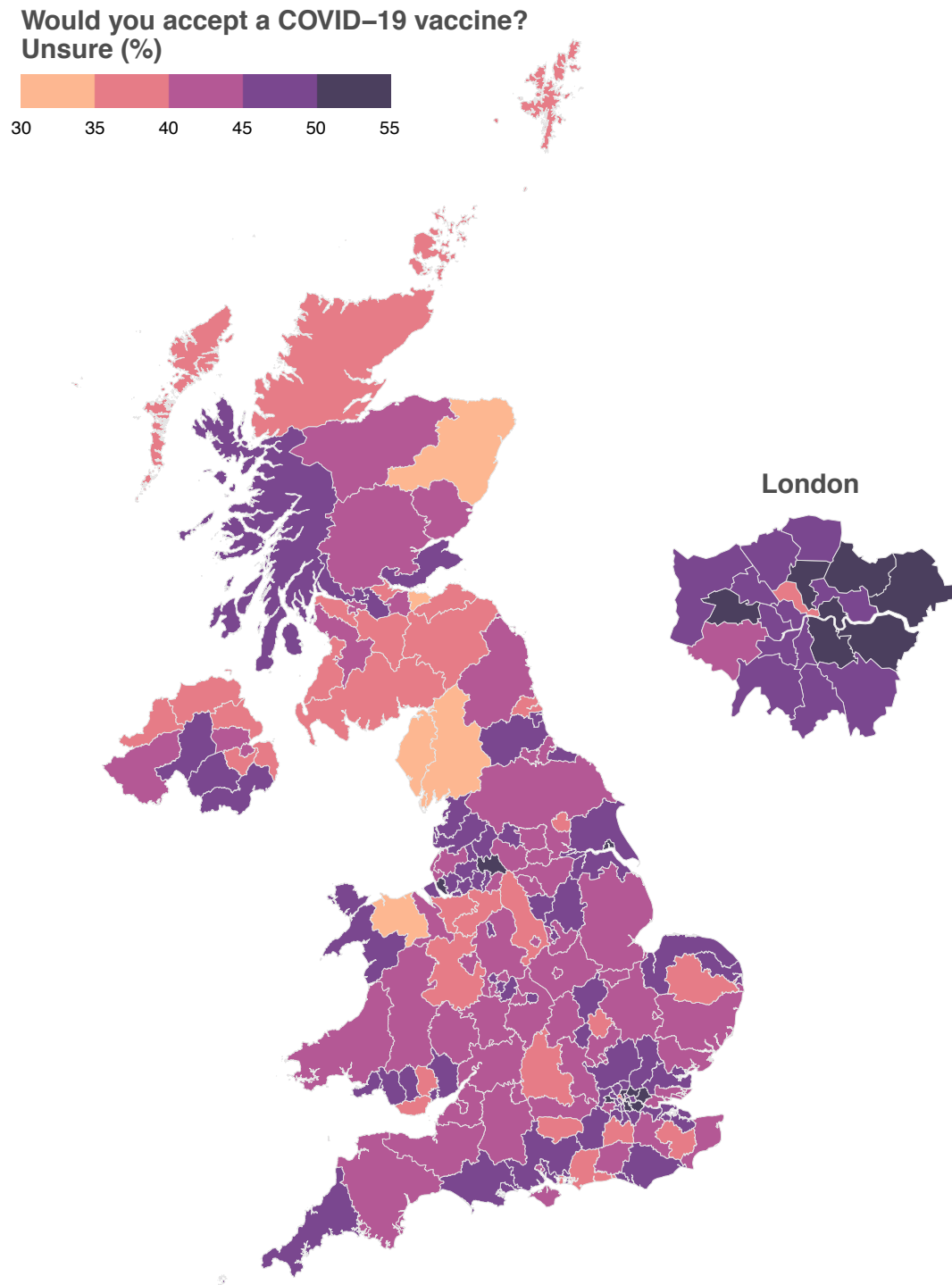
		If a new coronavirus (COVID-19) vaccine became available, would you accept the vaccine for yourself?									
Socio-econo-demographic	N	%	No, definitely not (N)	No, definitely not (%)	Unsure, but leaning towards no (N)	Unsure, but leaning towards no (%)	Unsure, but leaning towards yes (N)	Unsure, but leaning towards yes (%)	Yes, definitely (N)	Yes, definitely (%)	
					no (N)	no (%)	towards yes (N)	towards yes (%)	(N)	(%)	
SEX	Female	8682	51.6%	788	9.1	1120	12.9	3071	35.4	3703	42.6
	Male	8138	48.4%	560	6.9	699	8.6	2429	29.9	4450	54.7
AGE	18-24	1978	11.8%	180	9.1	251	12.7	753	38.1	794	40.1
	25-34	2934	17.4%	352	12	414	14.1	1022	34.8	1146	39.1
	35-44	3027	18.0%	298	9.8	391	12.9	1042	34.4	1296	42.8
	45-54	3015	17.9%	231	7.7	351	11.6	1025	34	1408	46.7
	55-64	2528	15.0%	164	6.5	226	8.9	789	31.2	1349	53.4
	65-79	3150	18.7%	117	3.7	176	5.6	826	26.2	2031	64.5
	80+	188	1.1%	6	3.2	10	5.3	43	22.9	129	68.6
highest EDUCATION	Level 1-3	7291	43.3%	629	8.6	823	11.3	2476	34	3363	46.1
	Level 4	7057	42.0%	453	6.4	712	10.1	2221	31.5	3671	52
	None/Other	2472	14.7%	266	10.8	284	11.5	803	32.5	1119	45.3
RELIGIOUS affiliation	Atheist or agnostic	5076	30.2%	362	7.1	521	10.3	1692	33.3	2501	49.3
	Christian	8279	49.2%	598	7.2	831	10	2549	30.8	4301	52
	Hindu	177	1.1%	6	3.4	13	7.3	62	35	96	54.2
	Jewish	143	0.9%	7	4.9	11	7.7	38	26.6	87	60.8
	Muslim	534	3.2%	66	12.4	80	15	209	39.1	179	33.5
	Not given	1159	6.9%	134	11.6	164	14.2	439	37.9	422	36.4
	other religion	1452	8.6%	175	12.1	199	13.7	511	35.2	567	39
ETHNICITY	Asian/Asian British	845	5.0%	65	7.7	103	12.2	336	39.8	341	40.4
	Black/Black British	413	2.5%	81	19.6	88	21.3	113	27.4	131	31.7
	Mixed	321	1.9%	41	12.8	40	12.5	107	33.3	133	41.4
	other ethnicity	315	1.9%	52	16.5	51	16.2	112	35.6	100	31.8
	White	14926	88.7%	1109	7.4	1537	10.3	4832	32.4	7448	49.9
EMPLOYMENT status	full-time	7326	43.6%	641	8.8	801	10.9	2371	32.4	3513	48
	looking after home / family	925	5.5%	89	9.6	133	14.4	345	37.3	358	38.7
	other	105	0.6%	23	21.9	12	11.4	37	35.2	33	31.4
	part-time	2942	17.5%	238	8.1	394	13.4	1079	36.7	1231	41.8
	retired / disabled	3834	22.8%	192	5	285	7.4	1033	26.9	2324	60.6
	student	844	5.0%	54	6.4	92	10.9	340	40.3	358	42.4
	unemployed	844	5.0%	111	13.2	102	12.1	295	35	336	39.8
primary LANGUAGE	English or Welsh	15656	93.1%	1179	7.5	1637	10.5	5090	32.5	7750	49.5
	Other	1026	6.1%	138	13.4	163	15.9	360	35.1	365	35.6
	Polish	138	0.8%	31	22.5	19	13.8	50	36.2	38	27.5

Table S1. Socio-econo-demographic breakdown of the 16,820 survey participants and their intent to accept a COVID-19 vaccine

## Appendix 2: Supplementary figures

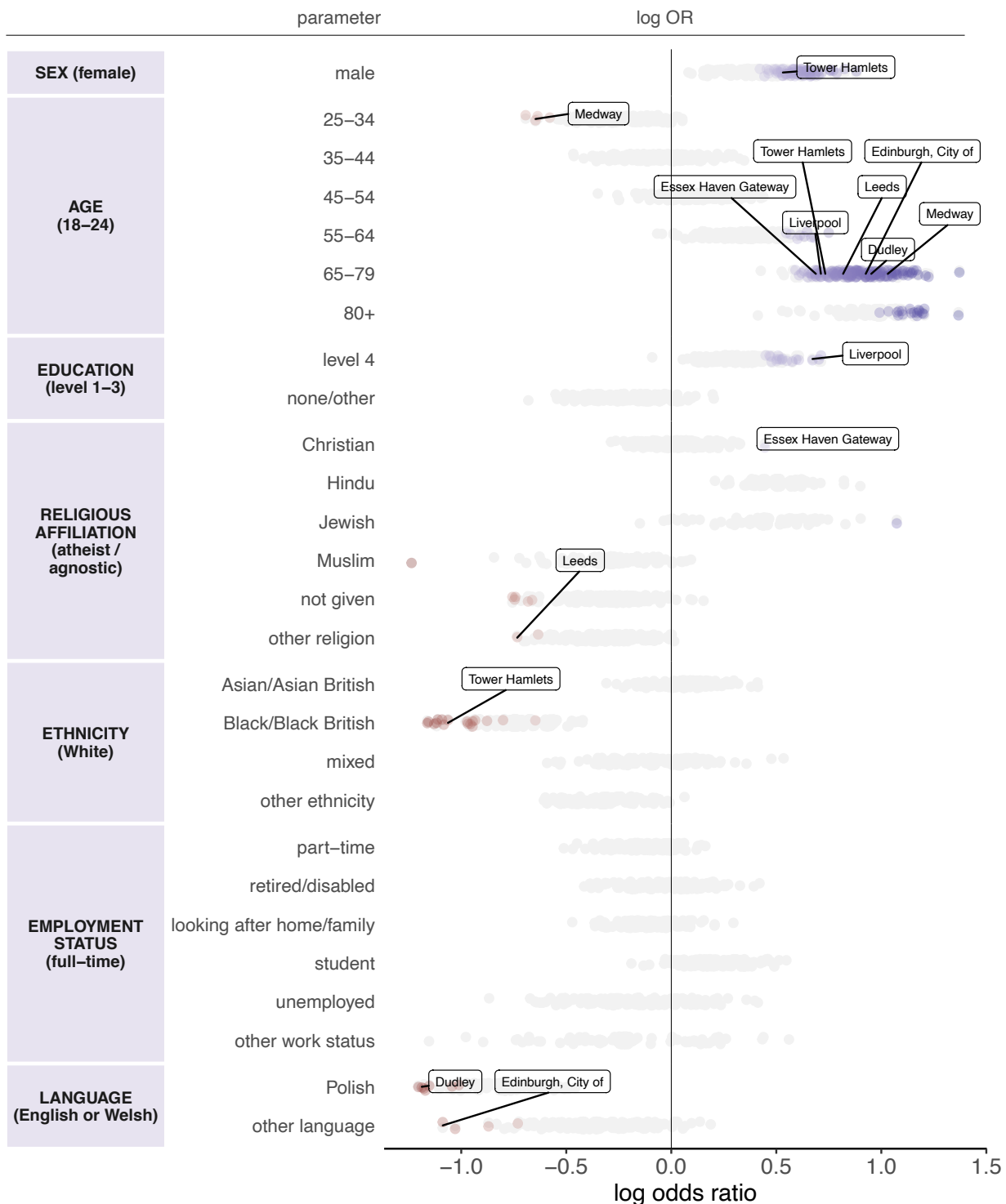
### Mapping COVID-19 vaccine acceptance: unsure about accepting a COVID-19 vaccine

The estimated proportion of respondents in each of the UK's 174 NUTS3 regions who are unsure about whether they would accept a COVID-19 vaccine ('unsure, but leaning towards yes' or 'unsure, but leaning towards no') is shown in figure S1 below. Estimates are derived via multilevel regression and poststratification as described in the main text and Appendix 3.

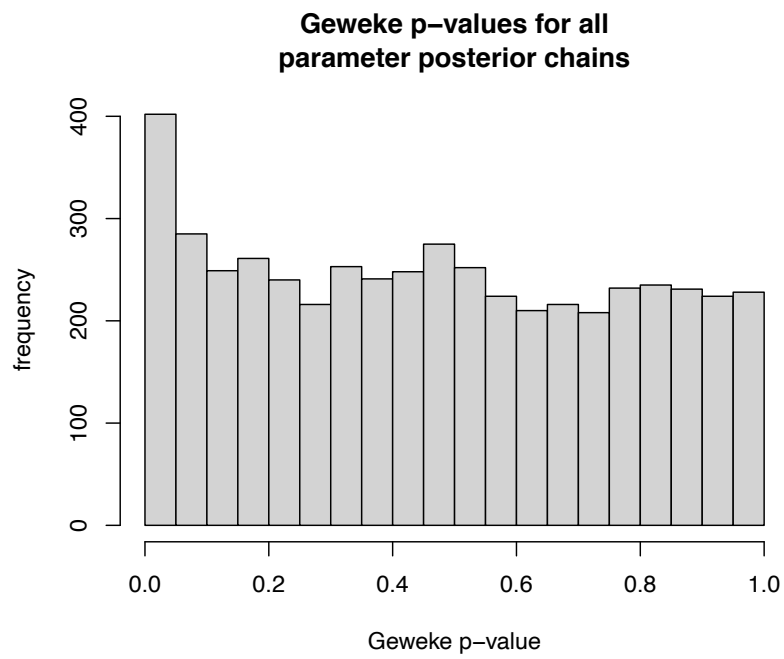


**Figure S1. Regional level MRP estimates of the proportion of each UK region who are unsure about accepting a COVID-19 vaccine**

## socio–econo–demographic determinants of intent to accept a COVID–19 vaccine (random–effects)

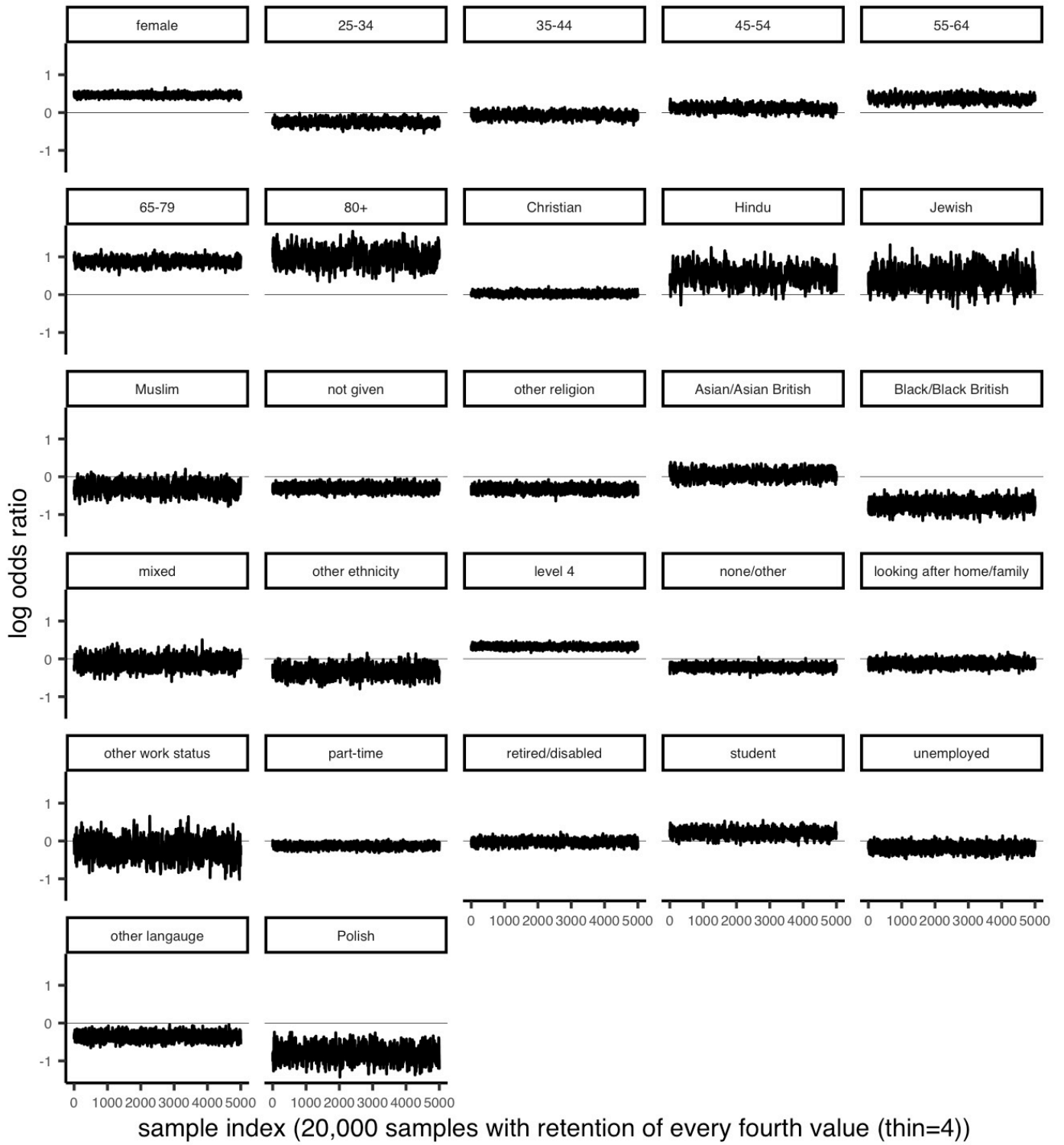


**Figure S2. Multilevel regression random effects.** All random effect parameters from the multilevel regression are shown in grey. Parameter log odds ratios are plotted with corresponding 95% HPDIs and coloured by effect size, where blues (reds) denote a positive (negative) association between the factor and intent to accept a vaccine relative to the baseline group (which is provided in parentheses on the left column). The darker the colour the stronger the association. All parameters whose 95% HPDI excludes zero are coloured. A selection of sub-national regions are shown, see supplementary data file (random effects) for all inferred random-effect parameters with HPDIs for all 174 regions.



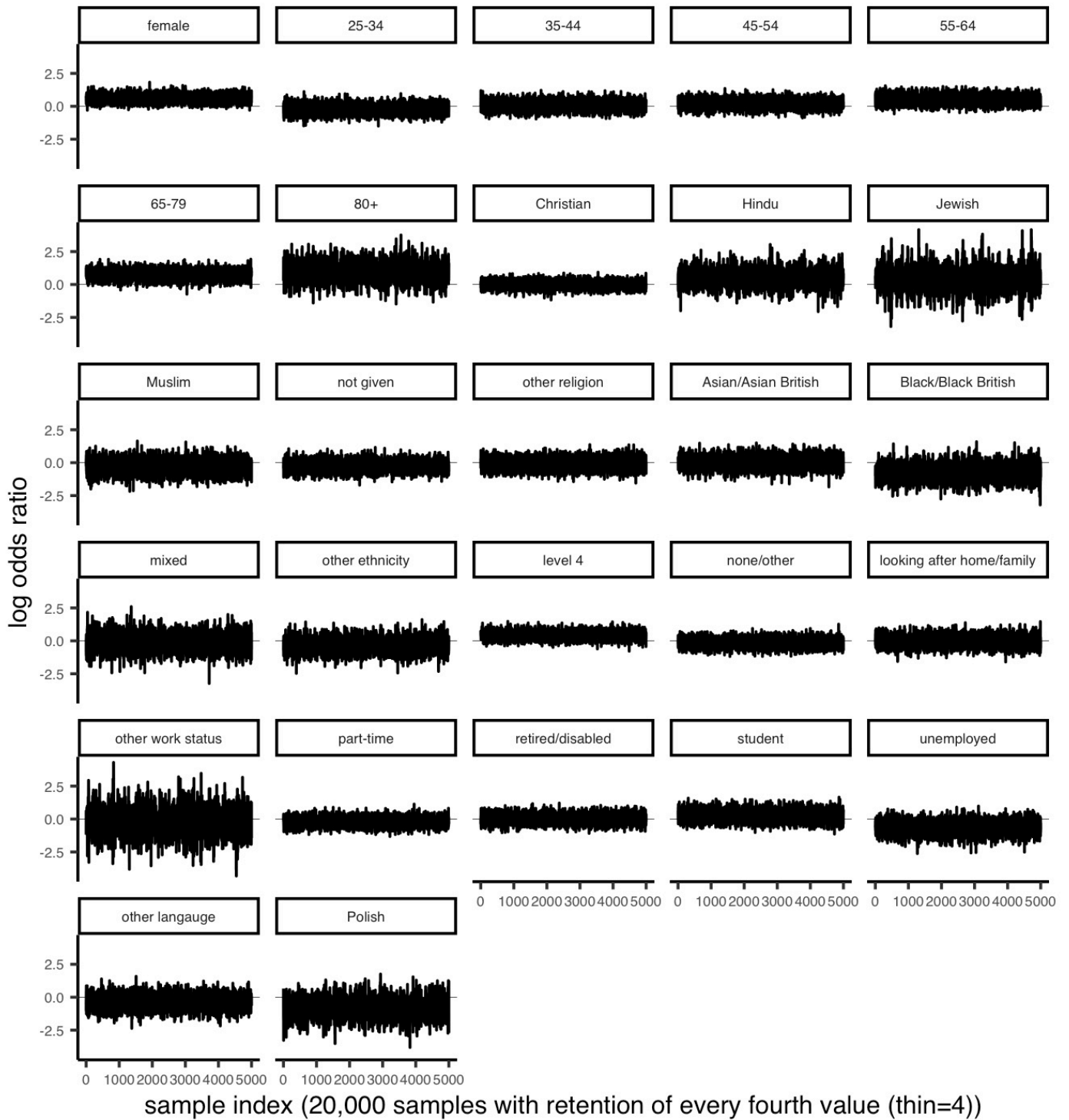
***Figure S3.*** Distribution of Geweke  $p$ -values for all parameter posterior chains.

### Mixing of posterior samples for fixed-effect parameters



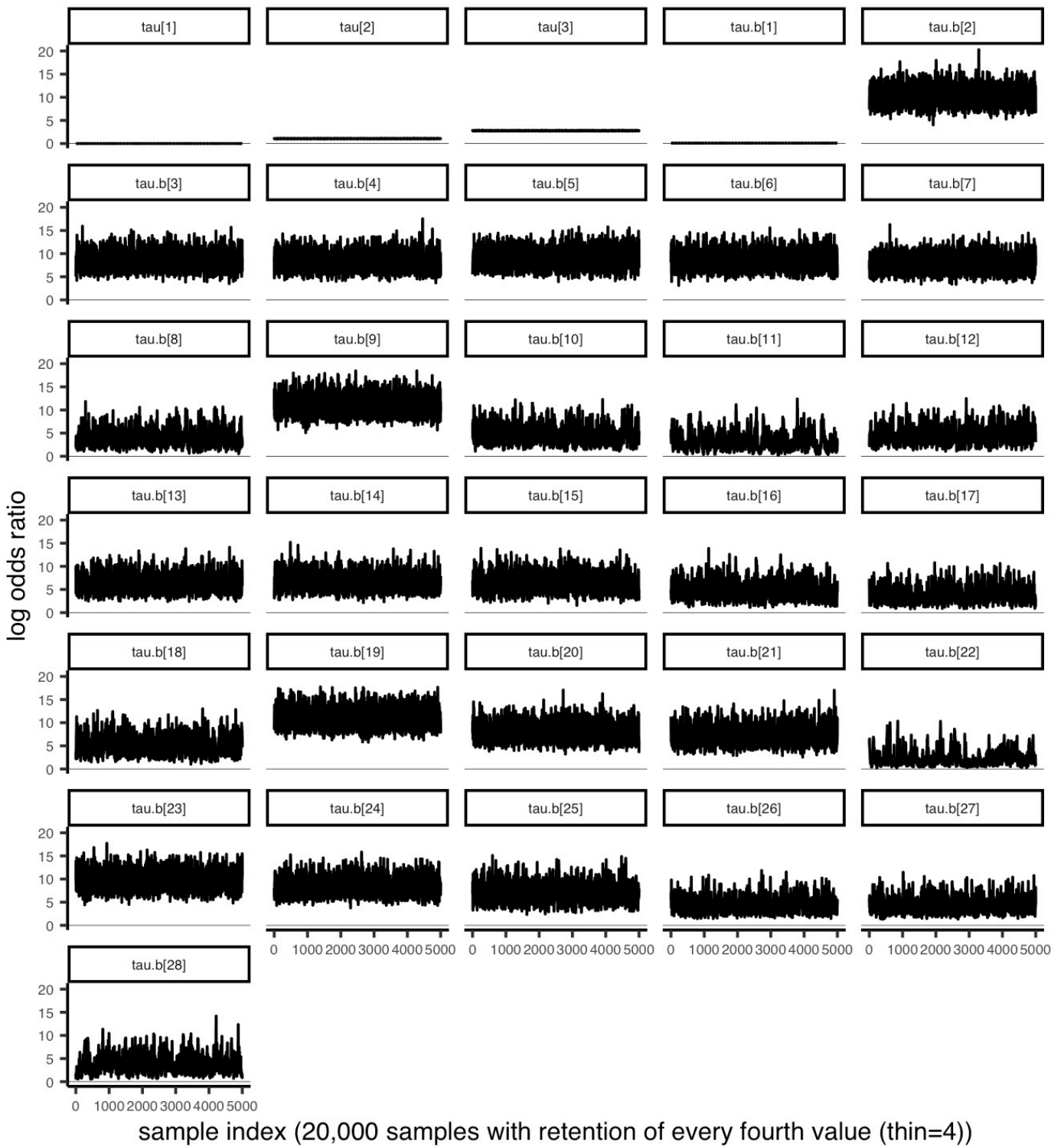
**Figure S4** Mixing and convergence of the fixed-effect parameters in the multilevel regression model

Mixing of posterior samples for random-effect parameters  
Hartlepool and Stockton-on-Tees



**Figure S5** Mixing and convergence of the random-effect parameters for Hartlepool and Stockton-on-Tees in the multilevel regression model.

### Mixing of posterior samples for variance parameters



**Figure S6** Mixing and convergence of the variance ( $\tau.b[1:28]$ ) and threshold ( $\tau[1:4]$ ) parameters for in the multilevel regression model. Note that for model identifiability,  $\tau[1] = 0$  is fixed.



## References

1. Gao, Y., Kennedy, L., Simpson, D. & Gelman, A. Improving multilevel regression and poststratification with structured priors. *arXiv* (2019) doi:10.1214/20-ba1223.
2. Hedeker, D. Multilevel models for ordinal and nominal variables. in *Handbook of Multilevel Analysis* (2008). doi:10.1007/978-0-387-73186-5\_6.
3. Gelman, A. Prior distributions for variance parameters in hierarchical models (Comment on Article by Browne and Draper). *Bayesian Analysis* (2006) doi:10.1214/06-BA117A.
4. Plummer, M. rjags: Bayesian graphical models using MCMC. *R package version 3-13* (2016).