

1 **SUPPLEMENTAL MATERIAL**

2

3 **A Novel Diagnostic Test to Screen SARS-CoV-2 Variants Containing E484K and N501Y**
4 **Mutations**

5 Yanan Zhao^{1,2#}, Annie Lee¹, Kaelea Composto¹, Marcus H. Cunningham¹, Jose R. Mediavilla¹,
6 Samantha Fennessey³, André Corvelo³, Kar Fai Chow⁴, Michael Zody³, Liang Chen^{1,2}, Barry N.
7 Kreiswirth^{1,2,5}, David S. Perlin^{1,2,5#}

8

9 ¹Center for Discovery and Innovation, Hackensack Meridian Health, Nutley, NJ 07110, USA

10 ²Hackensack Meridian School of Medicine, Nutley, NJ 07110, USA

11 ³New York Genomic Center, NY 10013, USA

12 ⁴Core Laboratory, Department of Pathology, Hackensack University Medical Center,
13 Hackensack, NJ 07110, USA

14 ⁵Georgetown University Lombardi Comprehensive Cancer Center, Washington, DC 20057, USA

15

16

17

18 # Address correspondence to Yanan Zhao, Ph.D. yanan.zhao@hnh-cdi.org, phone: 201-880-

19 3503, or David S. Perlin, Ph.D. david.perlin@hnh-cdi.org, phone: 201-880-3500

20 **Viral culture and RNA extraction.** Viral culture stocks of SARS-CoV-2 USA WA1/2020 (WT),
21 SARS-CoV-2 hCoV-19/USA/CA_CDC_5574/2020 (B.1.1.7), SARS-CoV-2 hCoV-
22 19/England/204820464/2020 (B.1.1.7), SARS-CoV-2 hCoV-19/South Africa/KRISP-EC-
23 K005321/2020 (B.1.351), and SARS-CoV-2 hCoV-19/South Africa/KRISP-K005325/2020
24 (B.1.351) were obtained from BEI Resources, NIAID (Manassas, VA). One mutant carrying
25 E4848K but not N501Y was recently isolated and obtained from a HMH network hospital. All
26 strains were propagated on VeroE6/TMPRSS2 cell line (SEKISUI XenoTech, KS) in a Biosafety
27 level (BSL) 3 laboratory. Supernatant of the viral culture was proteinase K treated (200 µg/ml)
28 and heat inactivated at 95°C for 10 min prior to RNA isolation in the BSL-2 laboratory using
29 QIAamp viral RNA mini kit (Qiagen, MD).

30
31 **Asymmetric RT-PCR and Melting curve analysis.** One set of primers were designed to
32 amplify a 148-nt region of the SARS-CoV-2 genomic RNA covering E484 and N501 of the spike
33 protein. Two differentially labeled molecular beacons, 484WT-MB (FAM-labeled) and 501WT-
34 MB (Quasar670-labeled), were designed to contain the WT sequences of E484 and N501,
35 respectively. Asymmetric RT-PCR was carried out on the Mic Real Time PCR Cycler (Bio
36 Molecular Systems, software micPCRv2.8.13) in a 20 µl reaction volume using the One Step
37 PrimeScript™ RT-PCR Kit (Perfect Real Time) (Takara). This duplex assay contained 10 µl of
38 one step RT-PCR Buffer III, 0.4 µl of PrimeScript RT enzyme Mix II, 0.4 µl of TaKaRa Ex Taq
39 HS (5U/µl), 40 nM of S484F, 1 µM of S501R (10 µM), 100 µM of both 484WT-MB and 501WT-
40 MB, and 5 µl of RNA or heat-inactivated template. Thermal cycling profile was 42°C for 5 min for
41 reverse transcription, followed by 95°C for 10 sec then 50 cycles of 95°C for 5 sec and 60°C for
42 20 sec. Immediately after amplification, melting curve analysis was initiated as a minute
43 incubation at 95°C, after which it was melted from 47.5°C to 58.5°C with a ramp rate of 0.1°C/s
44 for the 484WT-MB and melted from 53°C to 63°C with a ramp rate of 0.1°C/s for the 501WT
45 probe.

46

47 **Viral genome sequencing and analysis.** Viral RNA from swabs was extracted using QIAcube
48 Connect (Qiagen), following the manufacturer's instructions. SARS-CoV-2 targeted assay
49 libraries were prepared using the QIAseq SARS-CoV-2 Primer Panel and cDNA Synthesis for
50 Illumina kits (Illumina). Adapter sequences and low quality ($Q < 20$) bases were trimmed from
51 the raw reads, using Cutadapt v2.101 (<https://github.com/marcelm/cutadapt/>). Processed reads
52 were then mapped to the SARS-CoV-2 genome reference using BWA-MEM v0.7.172 [1] and
53 genome sequences were determined by Samtools v1.11 and bcftools v1.11 [2]. The genome
54 clades and lineages were determined by Nextclade server (<https://clades.nextstrain.org/>) and
55 Pangolin v2.3.0 (<https://github.com/cov-lineages/pangolin>), respectively. Genomes were aligned
56 using nextalign v0.2.0 (<https://github.com/nextstrain/nextclade/releases>), and a maximum
57 likelihood phylogenetic tree was constructed using IQ-TREE v2.1.2 [3] with automatic model
58 selection and 1000-bootstrap replicates. The tree was annotated using iTOL v6.0 [4].

59

60 **Clinical screening.** Clinical samples included in this study were de-identified nasopharyngeal
61 swabs obtained from 8 different sites within HMH network and banked in the biorepository of our
62 center. All samples were collected in standard viral transport media and stored at -80°C upon
63 receipt. An extraction-free method [5] was used to process samples prior to genotyping
64 analysis. Briefly, a 50 μl of aliquot was taken from each swab and mixed with 6.5 μl of
65 proteinase K (20 mg/ml, Roche), followed by heating up the mixture at 95°C for 5 min. Then 5 μl
66 of the processed sample was used directly as template for genotyping assay. Information of
67 sample source and collection timeline was provided by HMH bio-R working group.

68

69 **Statistical analysis.** T_m values for E484 and N501 genotype were determined by melting curve
70 analysis using the Mic Real-Time PCR software (micPCRv2.8.13). The melting curve and
71 epidemiological distribution of variants were plotted and analyzed in GraphPad Prism version

72 9.0.0. We used χ^2 test or Fisher's exact test to compare the distribution between different
73 locations. A *P* value less than 0.05 was considered statistically significant.

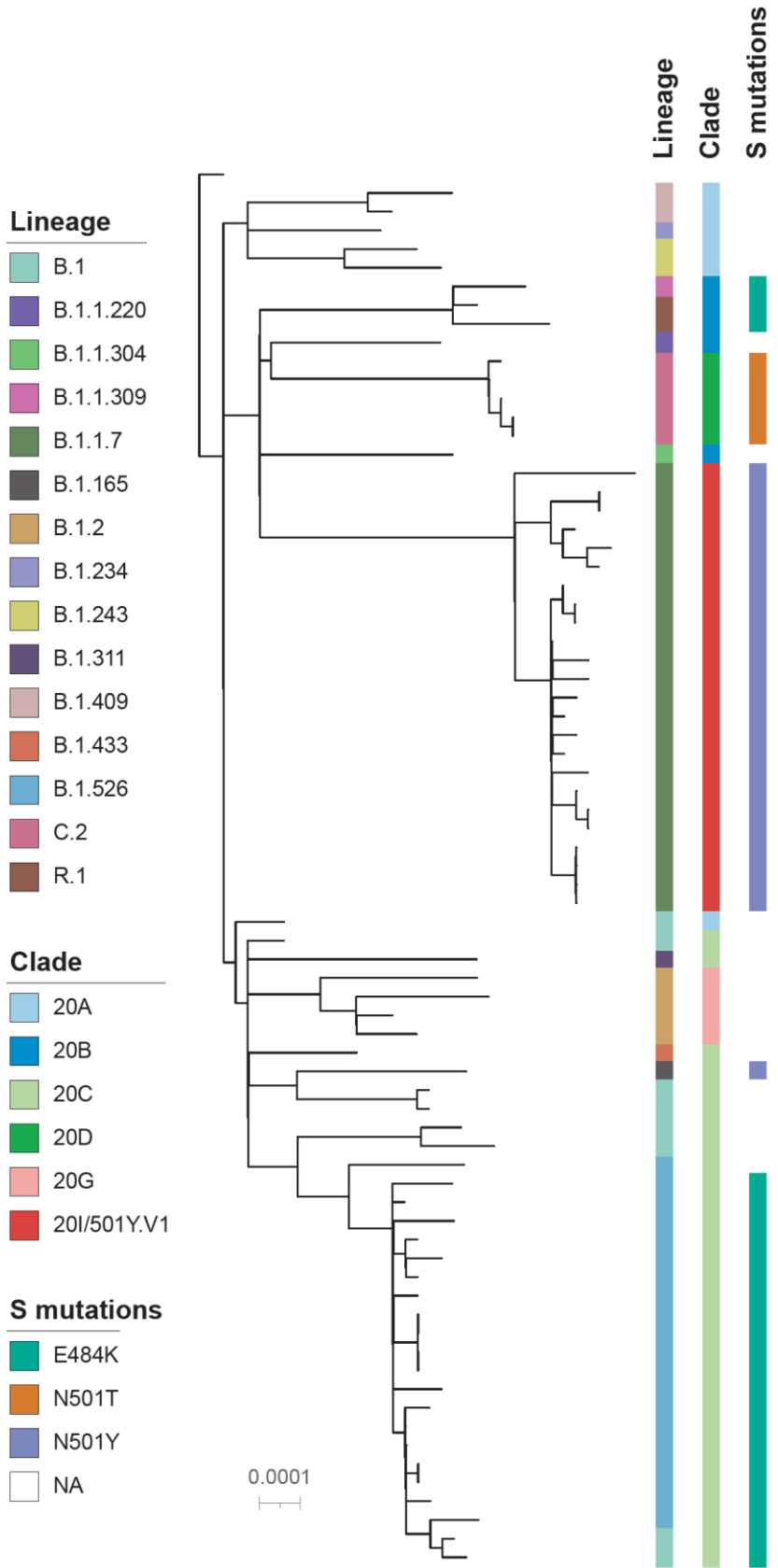
74

75 **References**

- 76 1. Li H, Durbin R. Fast and accurate long-read alignment with Burrows-Wheeler transform.
77 Bioinformatics (Oxford, England). 2010 Mar 1;26(5):589-95. doi:
78 10.1093/bioinformatics/btp698. PubMed PMID: 20080505; PubMed Central PMCID:
79 PMCPMC2828108. eng.
- 80 2. Li H, Handsaker B, Wysoker A, et al. The Sequence Alignment/Map format and
81 SAMtools. Bioinformatics (Oxford, England). 2009 Aug 15;25(16):2078-9. doi:
82 10.1093/bioinformatics/btp352. PubMed PMID: 19505943; PubMed Central PMCID:
83 PMCPMC2723002. eng.
- 84 3. Nguyen LT, Schmidt HA, von Haeseler A, et al. IQ-TREE: a fast and effective stochastic
85 algorithm for estimating maximum-likelihood phylogenies. Molecular biology and
86 evolution. 2015 Jan;32(1):268-74. doi: 10.1093/molbev/msu300. PubMed PMID:
87 25371430; PubMed Central PMCID: PMCPMC4271533. eng.
- 88 4. Letunic I, Bork P. Interactive Tree Of Life (iTOL) v4: recent updates and new
89 developments. Nucleic Acids Research. 2019;47(W1):W256-W259. doi:
90 10.1093/nar/gkz239 %J Nucleic Acids Research.
- 91 5. Vogels CBF, Watkins AE, Harden CA, et al. SalivaDirect: A Simplified and Flexible
92 Platform to Enhance SARS-CoV-2 Testing Capacity. Med (New York, NY). 2020 Dec 26.
93 doi: 10.1016/j.medj.2020.12.010. PubMed PMID: 33521748; PubMed Central PMCID:
94 PMCPMC7836249. eng.

95

96



98 **Figure S1.** A maximum-likelihood phylogenetic tree of 74 SARS-CoV-2 genomes from HMH
99 network. The tree is rooted with the Wuhan/Hu-1 SARS-CoV-2 reference (NC_045512.2)
100 sequence and annotated using iTOL (www.itol.embl.de). The scale bar represents 0.0001
101 nucleotide substitutions per site. The SARS-CoV-2 Pangolin lineage, NextStrain clade, S protein
102 484 and 501 mutations were illustrated by different color bars on the right.