

Vaccine escape in a heterogeneous population: insights for SARS-CoV-2 from a simple model

Julia R. Gog^{*1,2}, Edward M. Hill^{2,3,4,5}, Leon Danon^{2,6,7}, and Robin Thompson^{2,3,4}

¹*Department of Applied Mathematics and Theoretical Physics, University of Cambridge*

²*JUNIPER – Joint UNiversities Pandemic and Epidemiological Research,
<https://maths.org/juniper/>*

³*The Zeeman Institute for Systems Biology & Infectious Disease Epidemiology Research,
University of Warwick*

⁴*Mathematics Institute, University of Warwick*

⁵*School of Life Sciences, University of Warwick*

⁶*Department of Engineering Mathematics, University of Bristol*

⁷*The Alan Turing Institute*

This version: March 28, 2021

Abstract

As a counter measure to the SARS-CoV-2 pandemic there has been swift development and clinical trial assessment of candidate vaccines, with subsequent deployment as part of mass vaccination campaigns. However, the SARS-CoV-2 virus has demonstrated the ability to mutate and develop variants, which can modify epidemiological properties and potentially also the effectiveness of vaccines.

The widespread deployment of highly effective vaccines may rapidly exert selection pressure on the SARS-CoV-2 virus directed towards mutations that escape the vaccine induced immune response. This is particularly concerning whilst infection is widespread. By developing and analysing a mathematical model of two population groupings with differing vulnerability and contact rates, we explore the impact of the deployment of vaccine amongst the population on R , cases, disease abundance and vaccine escape pressure.

The results from this model illustrate two insights (i) vaccination aimed at reducing prevalence could be more effective at reducing disease than directly vaccinating the vulnerable; (ii) the highest risk for vaccine escape can occur at intermediate levels of vaccination. This work demonstrates a key principle that the careful targeting of vaccines towards particular population groups could reduce disease as much as possible whilst limiting the risk of vaccine escape.

1 Introduction

SARS-CoV-2 has caused a global pandemic with over 115,000,000 reported cases and 2,500,000 confirmed deaths as of 7th March 2021 [1]. In response, multiple vaccine candidates have been rapidly developed, tested in international trials and rolled out in mass vaccination campaigns in many parts of the world [2].

*corresponding author: jrg20@cam.ac.uk
medRxiv preprint doi: <https://doi.org/10.1101/2021.03.14.21253544>; this version posted March 28, 2021. The copyright holder for this preprint (which was not certified by peer review) is the author/funder, who has granted medRxiv a license to display the preprint in perpetuity. It is made available under a [CC-BY-NC-ND 4.0 International license](https://creativecommons.org/licenses/by-nc-nd/4.0/) .

In the United Kingdom, two vaccinations are in use (as of March 2021), an mRNA-based vaccine produced by Pfizer, and a viral vectored coronavirus vaccine produced by AstraZeneca. Phase 3 trials have determined these vaccines to be highly effective against disease, with the mRNA-based vaccines, in particular, reporting central efficacies against disease (i.e. preventing COVID-19 symptoms) in the range of 94% to 95% [3, 4].

With SARS-CoV-2, there remains considerable virological, epidemiological and immunological uncertainty, with implications for vaccine escape currently underdeveloped. In the absence of vaccination, the SARS-CoV-2 virus has demonstrated the ability to mutate and develop variants [5]. Variants with multiple genetic changes have led to phenotypic changes increasing transmissibility [6, 7], mortality [8] and have the potential to reduce the effectiveness of vaccines [5]. The mass deployment of highly effective vaccines, whilst infection is widespread, may rapidly exert selection pressure on the SARS-CoV-2 virus directed towards mutations that escape the vaccine induced immune response. However, the strength of this selection and the likelihood of vaccine escape is unknown at this time [9].

Due to limited vaccine supply, countries must decide on priority orders for vaccination. The optimal order of prioritisation will depend upon the measure being optimised (i.e. protecting essential societal functions or directly minimising health harms, such as cases, hospitalisations or deaths, or some combination of these) [10, 11, 12]. In the United Kingdom, vaccination policy advice is provided by the Joint Committee on Vaccination and Immunisation (JCVI). The JCVI advised that the first priorities for the SARS-CoV-2 vaccination programme should be the prevention of COVID-19 mortality and the protection of health and social care staff and systems [13]. At the time of the initial prioritisation, extremely limited data were available from clinical trials on vaccine efficacy for preventing infection and onward transmission. For the second phase of the vaccination programme, JCVI was asked by the Department for Health and Social Care (DHSC) to formulate advice on the optimal strategy to further reduce mortality, morbidity and hospitalisations from COVID-19 disease. The subsequent advice given was to proceed with an age-based priority order, with operational considerations as part of the justification on account of speed of vaccine uptake being paramount [14].

For prospective investigations, in the absence of empirical data, mathematical models provide a method to gather insight on these questions. We explore the interactions between the deployment of vaccine amongst the population, infection and disease prevalence, and vaccine escape. In this work, we ask the question of how considerations of vaccine escape risk might modulate optimal vaccine priority order. In particular, if infection in vaccinated individuals contributes to pressure to generate vaccine escape, how do the risks depend on the parts of the population that have been vaccinated. Rather than aiming to develop a detailed model of SARS-CoV-2 transmission dynamics, we present a two-population model with differing vulnerability and contact rates to elucidate broad principles on the relationships between epidemiological regimes, vaccine efficacy and vaccine escape. We explore strategies without the constraint of matching the vaccination rollout that has already happened in any country, both for applicability to future scenarios and to other countries.

2 Methods

2.1 Population heterogeneity

We are taking the approach of directly building the next generation matrix, based on assumptions about the population and effects of vaccination. We capture population variability in vulnerability and mixing by dividing our model population into two equally sized groups: half of the population are more vulnerable to disease and mix less with others, the other half is less vulnerable but mixes more with others – as shorthand we term these two halves of the population as ‘vulnerable’ and ‘mixers’. The

assumption of equal proportions is taken for simplicity, but the effects of relaxing this assumption are explored in the Supplementary Information (Figures S8 and S9). Vulnerability is modelled simply as a ratio $d > 1$ of a higher chance of a severe outcome if a vulnerable individual is infected compared to if a mixer is infected. This might represent progression to hospitalisation, need for more intensive treatment or a higher mortality rate. In practice of course, all of these could be separate effects, and ‘vulnerability’ is not straightforward. However to gain broad insights here, vulnerability is treated in this simple way – a higher chance of poor outcome, termed ‘disease’ in the results below for brevity. For the more mixing (less vulnerable) half of the population, they are deemed to have an m times higher rate of contact with others than the rest of the population (all the rest being vulnerable in this model). Carrying this through to a mixing matrix, this would be that mixers have m^2 higher mixing within their own group than non-mixers have within theirs, and m times higher between groups. To isolate and examine the key factors here of host vulnerability and mixing, we assume that the vulnerable and mixers are equally susceptible to infection, and also equally infectious if infected (only modified by their contact patterns). We also make the assumption in our analysis that there is no prior immunity in this system.

2.2 Effects of vaccination

For vaccination, we ignore any delay of effect of vaccination and multiple doses, but we do split the effect of the vaccination into three components. In this model, vaccination can (i) reduce the risk of infection, (ii) reduce the risk of severe disease and (iii) reduce the risk of infecting others, and we capture these as θ_S , θ_D and θ_I . These θ are all separate multiplicative effects on their corresponding rates, and hence $\theta_i = 0$ corresponds to the vaccine having complete/perfect prevention of infection, fully preventing disease given infection or being fully infectivity blocking and $\theta_i = 1$ means having no effect of the corresponding type. The θ_i here are comparable to $1 - VE_i$ of Halloran *et al.*[15].

Translating this framework to a general idea of disease blocking, this is the combined effect of reducing susceptibility and disease: $\theta_S \times \theta_D$ gives the relative risk of disease for someone vaccinated compared to unvaccinated (so vaccine efficacy in terms of disease blocking would be $1 - \theta_S \theta_D$, while vaccine efficacy in terms of case prevention would be $1 - \theta_S$). For transmission blocking, it is the combination of susceptibility and infectiousness that matters: $\theta_S \times \theta_I$ gives the relative contribution of population transmission from someone vaccinated compared to unvaccinated. It might be tempting mathematically to combine these to reduce this system to two parameters for vaccination, but all three distinct processes are needed to explore the number of vaccinated who become infected, as we argue we should when considering vaccine escape.

2.3 Direct calculation

Without vaccination, the next generation matrix (NGM, the matrix that relates the number of infected individuals of each type between infection generations [16]) is proportional to the matrix \mathbf{M}_0 , given by:

$$\mathbf{M}_0 = \begin{bmatrix} 1 & m \\ m & m^2 \end{bmatrix} = \begin{bmatrix} 1 \\ m \end{bmatrix} \begin{bmatrix} 1 \\ m \end{bmatrix}^T \quad (1)$$

where the first population represents the vulnerable and the second the mixers. Suppose now that a proportion v_1 and v_2 of the vulnerable and the mixers have been vaccinated respectively. This population can now be thought of as split into four compartments: the two unvaccinated groups as before (unvaccinated vulnerable, unvaccinated mixers) and then the two corresponding vaccinated groups (vaccinated vulnerable, vaccinated mixers).

Now the NGM is four by four, and as the original NGM could be represented by an outer product, this vaccinated NGM is proportional to $\mathbf{M}[v_1, v_2]$:

$$\mathbf{M}[v_1, v_2] = \begin{bmatrix} (1-v_1) & (1-v_1)m & (1-v_1)\theta_I & (1-v_1)m\theta_I \\ (1-v_2)m & (1-v_2)m^2 & (1-v_2)m\theta_I & (1-v_2)m^2\theta_I \\ \theta_S v_1 & \theta_S v_1 m & \theta_S v_1 \theta_I & \theta_S v_1 m \theta_I \\ \theta_S v_2 m & \theta_S v_2 m^2 & \theta_S v_2 m \theta_I & \theta_S v_2 m^2 \theta_I \end{bmatrix} = \begin{bmatrix} (1-v_1) \\ (1-v_2)m \\ \theta_S v_1 \\ \theta_S v_2 m \end{bmatrix} \begin{bmatrix} 1 \\ m \\ \theta_I \\ m\theta_I \end{bmatrix}^T \quad (2)$$

When \mathbf{M} can be written as an outer product, it is rank one and the spectral radius follows immediately (inner product of the same vectors, giving a positive real eigenvalue). The corresponding eigenvector can be read off (the column vector), giving the relative proportions of cases as split between the four groups. Further, under general feasible initial conditions (non-negative infections in all groups, perhaps zero in some but not all), the vector denoting the proportion of cases in each group will pivot quickly from any general initial distribution to this dominant eigenvector as all the other eigenvalues are zero.

The spectral radius (dominant eigenvalue here) of $\mathbf{M}[v_1, v_2]$:

$$\sigma[v_1, v_2] = (1-v_1) + (1-v_2)m^2 + \theta_S \theta_I (v_1 + v_2 m^2) \quad (3)$$

where the transmission-blocking combination of vaccine parameters ($\theta_S \theta_I$) naturally emerges here. As the effective reproduction ratio is proportional to this σ , $R[v_1, v_2]$ is given by

$$R[v_1, v_2] = R[0, 0] \frac{\sigma[v_1, v_2]}{\sigma[0, 0]} = R_0 \frac{(1-v_1) + (1-v_2)m^2 + \theta_S \theta_I (v_1 + v_2 m^2)}{1 + m^2} \quad (4)$$

and it is immediately apparent that that this it is linear in the proportions vaccinated.

We approximate the effective reproduction ratio as being constant during the period of time under consideration for assessing vaccine effects (t_{max}): in other words, there is no susceptible depletion as the timescale is relatively short in terms of the incidence under consideration (the lower the incidence, the longer this period can be). Then, the incidence $I(t)$ is exponential, with growth rate λ . Again for simplicity, we take $\lambda = \log(R)/T$ – the growth rate mapping from R corresponding to a fixed infectious period T with no variance. Then the incidence can be easily integrated over time to give the total number of cases during the period in question, and is further simplified by expressing the duration of the period of interest in terms of mean generation time T , so $t_{max} = GT$, where G is the duration of the period in terms of disease generations. We will consider the *relative* number of cases below, meaning constants unaffected by changing vaccination can be scaled out. We choose here to scale out initial incidence I_0 and also scale by t_{max} (to give $F(R)$ as something that could be interpreted as a time average of cases relative to initial incidence):

$$F(R) = \frac{\int_0^{t_{max}} I(t) dt}{I_0 t_{max}} = \frac{\int_0^{t_{max}} I_0 e^{\lambda t} dt}{I_0 t_{max}} = \frac{e^{\lambda t_{max}} - 1}{\lambda t_{max}} = \frac{R^G - 1}{\log(R^G)} \quad (5)$$

for $R \neq 1$. Also, $F(1) = 1$ (either by L'Hôpital's Rule or the integral using $\lambda = 0$). From above, we then have the relative number of cases $C[v_1, v_2]$, compared to a scenario with no vaccination:

$$C[v_1, v_2] = \frac{F(R[v_1, v_2])}{F(R_0)} \quad (6)$$

and these cases are distributed in the four subpopulations in proportion to the dominant eigenvector from above (ordered unvaccinated vulnerable, unvaccinated mixers, vaccinated vulnerable, vaccinated mixers respectively in the vector), normalised to give proportion of cases which are in each group:

$$\mathbf{P}[v_1, v_2] = \frac{1}{(1 - v_1) + (1 - v_2)m + \theta_S v_1 + \theta_S v_2 m} \begin{bmatrix} (1 - v_1) \\ (1 - v_2)m \\ \theta_S v_1 \\ \theta_S v_2 m \end{bmatrix} \quad (7)$$

2.4 Output metrics

We consider four main outputs. Two are already established above: the effective reproduction rate ($R[v_1, v_2]$) and the relative number of cases ($C[v_1, v_2]$). We define a further two in this section: a measure of the amount of disease relative to no vaccination ($D[v_1, v_2]$) and a measure of vaccine escape pressure ($V[v_1, v_2]$).

For ‘disease’, we consider the severe outcomes as represented by the vulnerability parameter d (which could represent hospitalisation, mortality, or any proxy of interest for severity). We already have the relative number of cases (C , equation 6) and know how these are distributed among the four population groups (\mathbf{P} , equation 7). The relative risk of disease is multiplied by a factor of d for the vulnerable and θ_D for the vaccinated (and multiplied by both for the vaccinated vulnerable). For the four respective groups, ordered as previously, the relative risk of disease is proportional to \mathbf{U} :

$$\mathbf{U} = \begin{bmatrix} d \\ 1 \\ d\theta_D \\ \theta_D \end{bmatrix} \quad (8)$$

Combining these, we have $D[v_1, v_2]$: a measure of total disease relative to a scenario with no vaccination:

$$D[v_1, v_2] = C[v_1, v_2] \frac{\mathbf{P}[v_1, v_2] \cdot \mathbf{U}}{\mathbf{P}[0, 0] \cdot \mathbf{U}} \quad (9)$$

$$= C[v_1, v_2] \left(\frac{d(1 - v_1) + (1 - v_2)m + d\theta_D \theta_S v_1 + \theta_D \theta_S v_2 m}{(1 - v_1) + (1 - v_2)m + \theta_S v_1 + \theta_S v_2 m} \right) / \left(\frac{d + m}{1 + m} \right) \quad (10)$$

For ‘vaccine escape’, reality is a highly complex picture of variants being generated and selected at various scales within and between host [17, 18]. Here we take an extremely simple approach and measure pressure on vaccine escape as proportional to the number of cases in vaccinated individuals, treating the vulnerable and mixers as equal in this respect (sensitivity to including cases in unvaccinated hosts as contributing to the vaccine escape pressure is also considered below - see the Supplementary Information, Figure S2). It is far from clear that this is the best way to approach this, but we propose it here as a straightforward and achievable method. We acknowledge the shortcomings of this approach must be held in mind when interpreting the results below.

Building this mathematically, vaccine escape $V[v_1, v_2]$ is proportional to the number of cases in vaccinated individuals, but the normalisation for this cannot be the same quantity under no vaccination (this would be a zero denominator), so we use *total* number of cases under no vaccination as the normalisation. Let $P[v_1, v_2]$ be the proportion of cases that are in vaccinated individuals:

$$P[v_1, v_2] = \mathbf{P}[v_1, v_2] \cdot \begin{bmatrix} 0 \\ 0 \\ 1 \\ 1 \end{bmatrix} \quad (11)$$

Then $V[v_1, v_2]$ is the product of the relative cases ($C[v_1, v_2]$) and the proportion of these cases that are in vaccinated individuals ($P[v_1, v_2]$):

$$V[v_1, v_2] = C[v_1, v_2] P[v_1, v_2] \quad (12)$$

$$= C[v_1, v_2] \frac{\theta_S v_1 + \theta_S v_2 m}{(1 - v_1) + (1 - v_2)m + \theta_S v_1 + \theta_S v_2 m} \quad (13)$$

2.5 Extension to more general population structures

It is straightforward to generalise this to n population groups, where group i has relative size x_i of the population, a relative vulnerability d_i and relative mixing m_i (with one degree of freedom in each of these, so either one group can be set to unity, or total normalised). When considering more general population structures, relative susceptibility to disease or infectiousness to others can also be included (μ_i and τ_i respectively) – this may be particularly important if the population is broken down into age classes considering children separately.

Following analogously from above the next generation matrix is $2n \times 2n$ and can be written as an outer product:

$$NGM = \begin{bmatrix} (1 - v_1)x_1\mu_1m_1 \\ (1 - v_2)x_2\mu_2m_2 \\ \vdots \\ (1 - v_n)x_n\mu_nm_n \\ \theta_S v_1 x_1 \mu_1 m_1 \\ \theta_S v_2 x_2 \mu_2 m_2 \\ \vdots \\ \theta_S v_n x_n \mu_n m_n \end{bmatrix} \begin{bmatrix} m_1 \tau_1 \\ m_2 \tau_2 \\ \vdots \\ m_n \tau_n \\ \theta_I m_1 \tau_1 \\ \theta_I m_2 \tau_2 \\ \vdots \\ \theta_I m_n \tau_n \end{bmatrix}^T \quad (14)$$

As before, this is a rank one matrix and the spectral radius here is the inner product of the same vectors, giving the proportionality with the effective reproduction ratio R . The calculation for cases is exactly as above, and the distribution of cases is as the dominant eigenvector, which is the column vector of the outer product.

Further generalisations are implementable, for example the vaccine effects θ_S , θ_I and θ_D could vary by age group – this would require additional parameterisation but the same analytic approach remains possible. In the more general case that the mixing structure cannot be written as an outer product then it is likely a numerical approach would be needed.

2.6 Parameterisation

The goal of our simple modelling approach is to gain general results which hold true both in more complex models and in broad realistic ranges of parameters, and therefore give valuable insights.

Hence, a detailed parameterisation here is not required, but we can base our parameters in ‘ballpark’ ranges corresponding to current knowledge.

For vaccination parameters, knowledge is currently growing at a pace on vaccine effectiveness. From clinical trials of the Pfizer vaccine, using data for those cases observed between day 15 and 28 after the first dose, efficacy against symptomatic COVID-19 has been independently estimated by Public Health England as 91% (74% to 97%) [19]. Assessment of clinical trial data for the Oxford/AstraZeneca vaccine has shown vaccination (two standard doses given 12 or more weeks apart) to reduce symptomatic disease by 81.3% (60.3%-91.2%); while protection following the first dose is estimated as 76.0% (59.3% - 85.9%) between days 31 and 60. The level of protection against infection (both symptomatic and asymptomatic) were found to be 63.9% (46.0%-76.9%) after 1 dose and 59.9% (35.8%-75.0%) after two doses [20].

We are beginning to see real-world evidence of vaccine effectiveness through observational studies. Against symptomatic COVID-19 in older people in the United Kingdom, one observational study found that a single dose of the Pfizer vaccine was approximately 60-70% effective at preventing symptomatic disease in adults aged 70 years and older in England and two doses were approximately 85-90% effective. The effect of a single dose of the Oxford/AstraZeneca vaccine against symptomatic disease was approximately 60-75% [21]. Estimates of the likelihood of severe outcomes conditional on symptomatic infection have also been gathered. For the Pfizer vaccine, those aged 80+ and vaccinated who went on to become a symptomatic case had a 43% lower risk of hospitalisation (within 14 days of a positive test) and a 51% lower risk of death (within 21 days of a positive test) compared to unvaccinated cases. The effect of a single dose of the Oxford/AstraZeneca vaccine in those aged 80 and above who went on to become a symptomatic case was 37% protection against hospitalisation within 14 days of a positive test [21]. More recent results show protection against hospitalisation from a single dose of either the Oxford/AstraZeneca or Pfizer vaccines to be around 80% [22].

The picture on the capability of the available vaccines to prevent onward transmission is currently less clear. Ascertaining the magnitude of any transmission blocking effect most directly will require detailed observational studies in closed settings or households. All of these could be further complicated by age-dependencies, such as the rate of hospitalisation [23], and further disparities in case and severe outcomes due to pre-existing health conditions and socio-demographic factors [24]. As well as refinement of estimates over the coming months, vaccine effects may be modulated in the face of new variants in future.

For our default vaccination parameters we take $\theta_S = 0.6$, $\theta_T = 0.6$, $\theta_D = 0.3$. This corresponds to a relative risk of disease of $\theta_S \times \theta_D = 0.18$, comparable with a vaccine effectiveness of around 80%. Transmission blocking is perhaps the most uncertain factor here, and our values correspond to $\theta_S \times \theta_I = 0.36$ – transmission reduced by a factor of around 3. Transmission assumptions are key to the resulting dynamics, and our knowledge of appropriate parameters here may change in the near future, so sensitivity to this is explored below (Figure 2) and further in the Supplementary Information (Figures S1, S4, S6).

For the population heterogeneity, the two groups of vulnerable and mixers could be thought of as loosely corresponding to older and younger age groups, though here we are not considering children whose mixing patterns and also their susceptibility and infectiousness for SARS-CoV-2 could be very different to that of adults [25, 26, 27]. To approximate a ‘mixing’ parameter, the BBC pandemic study [28], with data from the United Kingdom in 2017-18, shows the mean number of contacts by age. While there are clear differences by age, the ratios are not large. A visual inspection of younger adults vs older adults, allows us to approximate the range for m as 1 – 2 by default.

For the vulnerability ratio d - this is not straightforward to parameterise as (a) we are using this to explore severe outcomes in an abstract way, so it could correspond to probability of hospitalisation or

a case fatality ratio or any other measure of severe disease and (b) the simple two-population structure is for exploration of the effects of heterogeneity rather than explicitly corresponding to defined population groups. Further, estimates for COVID-19 severity vary between studies, depending on context [29, 30, 31] and presence of more pathogenic variants [8, 6]. Below, we have taken $d = 10$ as the default in plots to explore the case where the vulnerable group is substantially more at risk, but the other half of the populations cannot be neglected for disease risk. For results on disease below, these are shown for a range of d (1 to 10) and it is visually clear what would happen for larger d . Most of the results below on vaccine escape do not depend on d .

For the parameters for the scenario under consideration, we have considered a situation where $R > 1$ initially before vaccination, choosing particularly $R_0 = 1.2$ which approximately corresponds to mid-September and October 2020 in United Kingdom [32], a situation with some regions under tight restrictions and some interventions everywhere (this is clearly not a true R_0 , but here R_0 is termed for the value of the effective reproduction ratio at this time if there were no vaccination). The value of G , the time period considered as measured in mean generation times, is going to be a subjective decision. Estimates for the generation time are variable between studies, but typically around 4-6 days [33, 34]. We take $G = 15$ by default, corresponding to a time window of 2-3 months. How results vary with G is discussed below, and $G = 5$ is used example to show how outputs change with a shorter G in the Supplementary Information (Figures S3-S6).

3 Results

3.1 Dependency of epidemiological outcomes on vaccine coverage

A summary set of results for a typical parameter set are shown in Figure 1. The effective reproduction ratio decreases as more people are vaccinated (Figure 1 top left). From the analytic expression above, we can see that this decrease in the effective reproduction ratio occurs for all parameter values so long as there is any transmission blocking effect of the vaccine ($\theta_S \theta_I < 1$). Further, the dependence on the proportion vaccinated is linear, with stronger effect (by factor m^2 here) for vaccinating the mixers. The cases (Figure 1 top right) are here a direct function of R so also decreases with increasing vaccination, but not linearly: there is a steep drop to $R = 1$ and there after the effect is smaller, simply reflecting prevalence dropping faster during the period in question. Intuitively, we expect similar vaccine effects on R and total cases will hold in more complex models.

3.2 Effect of vaccine on number of cases with severe disease

The total number of severe infections over this fixed period, denoted here as disease (Figure 1 bottom left), decreases as vaccination increases in either group. However this is no longer purely a function of R : it is also dependent on *who* is infected – the distribution of cases among the vulnerable and mixers. If vaccination coverage is higher in the vulnerable than the mixers, disease is disproportionately brought down relative to cases, and this is visible as a slight curve of the contours in the bottom right of the panel (where v_1 is high and v_2 is low).

It is intuitive that for a very wide range of models, vaccinating more people in any group has the effect of decreasing cases in that group and also possibly other groups also, driven by the dual effects of vaccination in transmission-blocking and disease-blocking effects. The question remains of which group it would be most effective to vaccinate to reduce severe disease (or any other outcome represented by increased vulnerability).

This question of optimal allocation can be explored by considering a situation in which we have a fixed

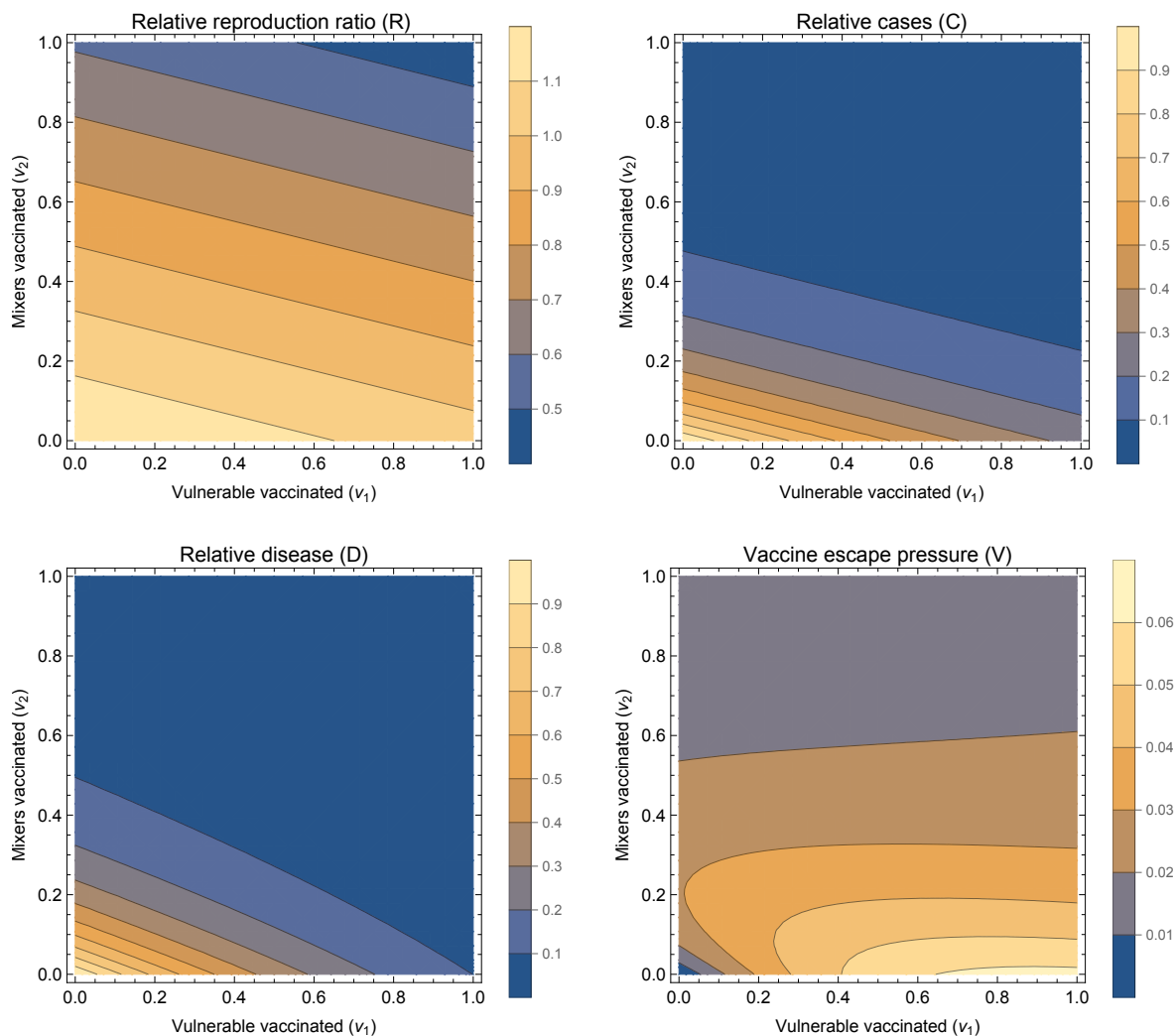


Figure 1: Summary outputs

Summary outputs for a fixed set of population parameters ($m = 2$, $d = 10$), vaccine parameters ($\theta_S = 0.6$, $\theta_T = 0.6$, $\theta_D = 0.3$) and scenario under consideration ($R_0 = 1.2$, $G = 15$). Four output measures are shown, relative reproduction ratio $R[v_1, v_2]$ (upper left), relative cases $C[v_1, v_2]$ (upper right), relative disease $D[v_1, v_2]$ (lower left), and vaccine escape pressure $V[v_1, v_2]$ (lower right). All four panels are shown as contour plots with horizontal and vertical axes representing the proportion of vulnerable and mixers vaccinated (v_1 and v_2 respectively).

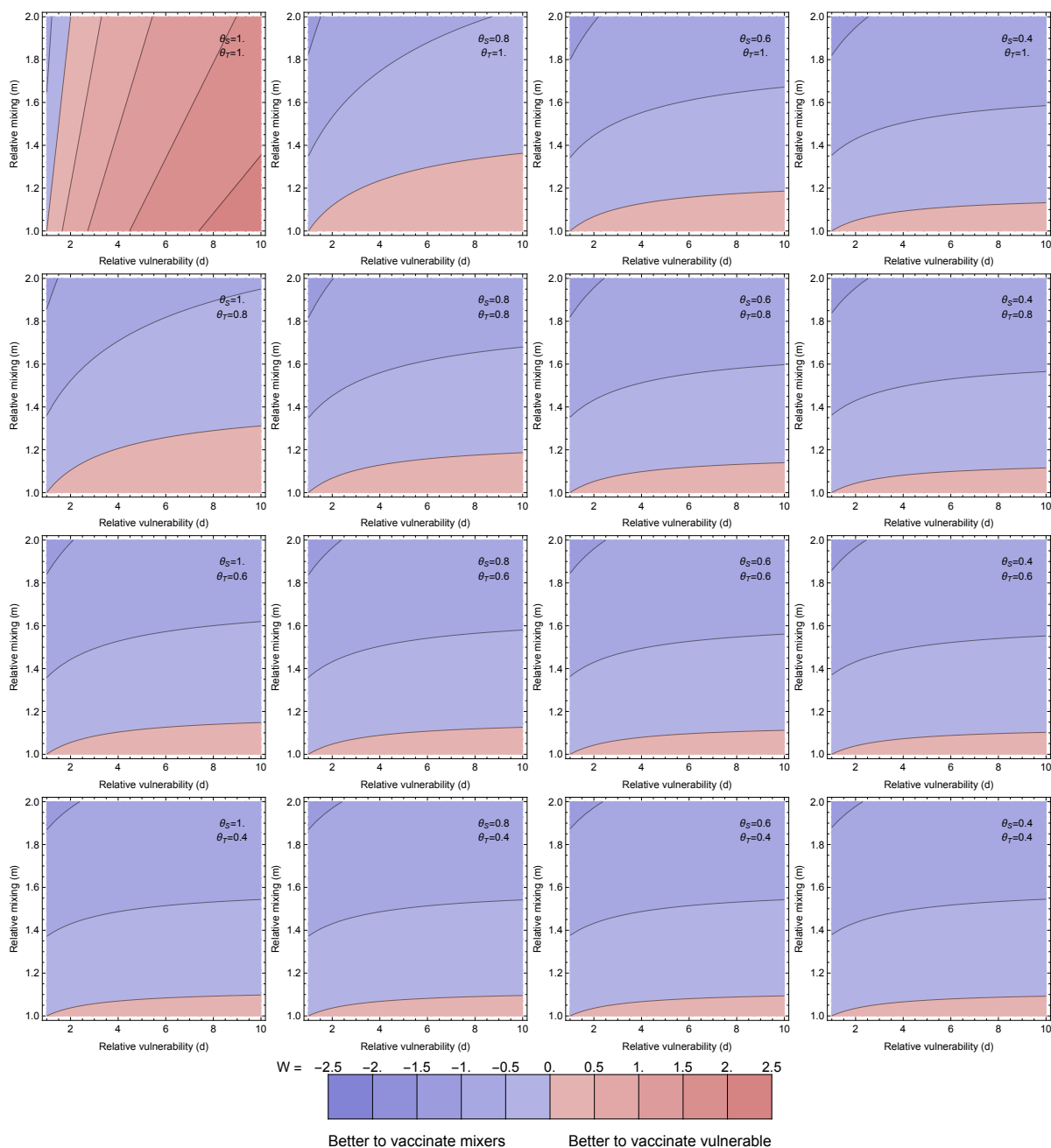


Figure 2: Optimal allocation for averting disease

Optimal allocation for averting disease (as measured by W : logged ratio of disease averted by vaccinating the vulnerable compared to the mixers). Individual panels explore the population parameters (vulnerability d and mixing m on horizontal and vertical axes). The contour values are kept fixed between the plots, with the contour for ratio 1 between the blue and red, and meeting the bottom left of every panel (where $m = d = 1$ so the population is homogeneous). More disease is averted by vaccinating the vulnerable than the mixers in the pink regions and vice versa in the blue regions.

Different panels vary the effects of the vaccine: the rows step through $\theta_T = 1, 0.8, 0.6, 0.4$ and the columns step through $\theta_S = 1, 0.8, 0.6, 0.4$. Through all panels, $\theta_D = 0.3$. Thus the top left panel corresponds to the vaccine having no transmission blocking effects at all, and stepping right and down increases transmission blocking through reduced susceptibility or infectivity. All other parameters are as in Figure 1.

amount of vaccine (enough to vaccinate a proportion ϵ of either group, say), and considering either solely vaccinating the most vulnerable or the mixers and evaluate W , the logged ratio of disease prevented by vaccinating the vulnerable compared to vaccinating the mixers:

$$W = \log \left(\frac{1 - D[\epsilon, 0]}{1 - D[0, \epsilon]} \right) \quad (15)$$

where $D[v_1, v_2]$ is the relative total disease function set up above (where $D[0, 0] = 1$).

In Figure 2, W is explored as a function of vulnerability of the vulnerable (d), mixing of the mixers (m) and the two transmission-blocking effects of the vaccine (θ_S and θ_I). Here we set the proportion $\epsilon = 0.1$, but given that disease is near linear in v_1, v_2 it will not be very sensitive to this. The overall picture is that in the majority of the parameter space explored, vaccinating the mixers is more effective than vaccinating the vulnerable to reduce the total amount of disease.

This might not be intuitive – intuition may say to focus vaccination on the vulnerable. The result here hinges on the transmission-blocking effects of the vaccination dominating: bringing down R overall means fewer cases in the vulnerable and the most efficient way to do that is to vaccinate the mixers. There are three edges of parameter space, each discussed below, where this effect is reversed: (i) where there is little difference in mixing between the groups (m is close to one), (ii) when there is no (or very little) transmission blocking effect ($\theta_S = \theta_I = 1$) or (iii) when the time horizon that we are optimising over is very short (G small).

For (i), m is close to 1, this is visible just above the horizontal axis in the individual panels in Figure 2. In this case, as $m \approx 1$, the ‘mixing’ half of the population is not actually so different to the vulnerable half in terms of their role in population transmission, and the benefits of vaccinating them are reduced. This could happen if there was little heterogeneity in mixing to start with, or the vulnerable started to mix more as the vaccine rolled out. This also can happen analogously when the population proportions are varied so the vulnerable are a small group, and mixing is largely uniform in the rest of the population (Figures S8 and S9 in the Supplementary Information).

For (ii), if the vaccine is not transmission-blocking but purely disease-blocking, then it makes sense that the only use of the vaccine is the direct benefits of protecting the individual vaccinated, rather than any impact on the epidemic trajectory. The top left panel of Figure 2 shows this effect, but also illustrates the exception within this exception (the blue wedge along the vertical axis). When there is strong mixing in the mixing group, then cases are disproportionately in that group. Even though they are less likely to have severe disease, the chances they will be cases means that vaccine is still best deployed to directly protect the mixing group. Under this simple two population model, this will be when $m > d$ (which can be seen from the distribution of cases determined by the eigenvector above).

For (iii), shifting to a shorter time window means that the change to the epidemic trajectory induced by the vaccine becomes less important as the focus is on more immediate effects. This is explored in the Supplementary Information. In the extreme, this will become like case (ii) above: the distribution of cases in the groups must be weighted against the relative vulnerability so $d > m$ again for it to make sense to vaccinate the vulnerable preferentially.

Overall, the results in this model show that the effects of vaccination on reduction of cases can give a counter-intuitive optimal strategy: vaccinate the mixers to best protect the vulnerable. This result in the present model is chiefly driven by the dynamic trajectory of the epidemic responding to transmission-blocking effects of vaccination, but also slightly by the burden of infection being disproportionately amongst the most mixing part of the population. The generality or otherwise of this result is discussed below, and this result must be viewed together with the caveats to this simple approach, also discussed below.

3.3 Vaccine escape

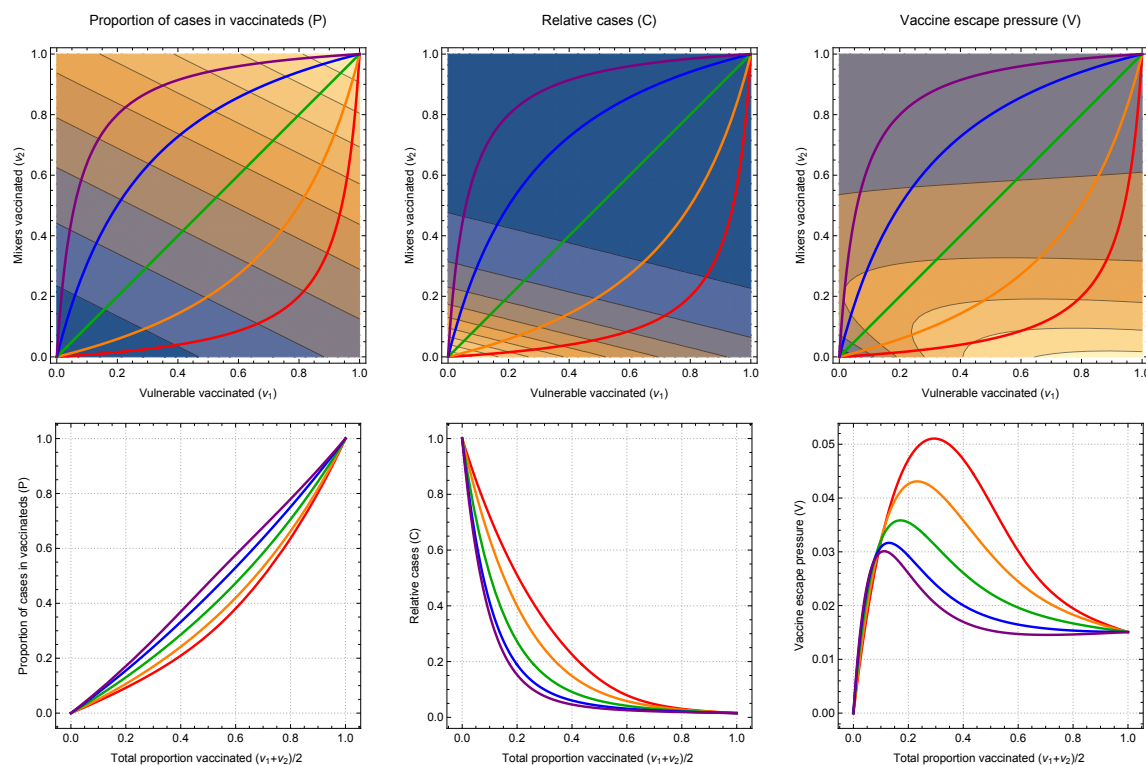


Figure 3: One dimensional paths to explore vaccine escape

The left pair of plots show the proportion of cases that are among those vaccinated, the middle pair give the total number of cases (relative to if there was no vaccination) and the right pair give the vaccine escape pressure. All parameters are as in Figure 1.

The top row shows all of these as functions of the proportion of vulnerable and mixers vaccinated (v_1 and v_2 respectively on horizontal and vertical axes). The coloured lines show five one-dimensional paths, as the total number vaccinated varies from none to all of the population, taking different routes in terms of the mix of vulnerable and mixers. The lower plots correspond to outputs on those 1-D paths.

The proportion of cases in vaccinateds increases as a function of the proportion vaccinated, while the total number of cases decreases. The product of these gives a measure of vaccine pressure which can be maximal for intermediate levels of vaccination.

As described above, we represented vaccine escape pressure in the simplest way as the number of cases in vaccinated individuals. Even for this simple model approach, a rich picture emerges (Figure 1 bottom right). With none of the mixers vaccinated, vaccinating more vulnerable mostly just increases vaccine escape pressure. However, this is not true the other way around: with no vulnerable vaccinated, then vaccinating the mixers at first increases vaccine escape pressure, and later decreases for greater vaccine uptake amongst the mixers population. This result can be interpreted intuitively: increasing vaccination of mixers increases the *proportion* of cases who are vaccinated, but decreases the overall *absolute* number of cases. These two effects combine to give a maximum at intermediate levels of vaccination. This is explored over a wider range of vaccine parameters in Supplementary Information (Figure S1) – the same effect holds except when the vaccine has no transmission blocking effects.

The non-monotonic effects are investigated further in Figure 3 by considering one-dimensional line from no vaccination to full vaccination, varying in terms of path taken in terms of balance of vulnerable

and mixers. In all of these the total cases decreases with more vaccination (Figure 3 bottom middle panel), but the proportion of these cases which are in those who have been vaccinated increases with more vaccination (Figure 3 bottom left panel). The product of these gives the vaccine escape pressure, and for all of these it is unimodal: there is highest risk at some intermediate range of vaccination. This peak is maximised by vaccinating vulnerable first, but it is there for all paths for the parameters used here.

These effects are dependent on the vaccine changing the trajectory of the epidemic and bringing cases down. For a shorter time horizon, there is less time for these effects to come into play. Similarly if the cases in unvaccinated individuals played a significant role in vaccine escape, then this picture would be modified, mainly to reduce the low pressure for low vaccination. Both of these sensitivities are explored further in the Supplementary Information.

4 Discussion and conclusions

4.1 Summary

There are multiple facets to consider when determining a prioritisation order for delivery of a limited vaccine supply. Here we suggest that pressure on vaccine escape should be part of these considerations, and that exploratory modelling can highlight where the risk points are. By analysing a simple model of two populations with differing vulnerability and contact rates we unpick combinations of epidemiological regimes and vaccine efficacy where the risk of vaccine escape is heightened.

Our results illustrate two main insights: (i) vaccination aimed at reducing prevalence could be more effective at reducing disease than directly vaccinating the vulnerable; (ii) the highest risk for vaccine escape can occur at intermediate levels of vaccination. In particular, vaccinating most of the vulnerable and few of the mixers could be the most risky for vaccine escape.

4.2 Caveats and areas for further development

By the very nature of the model being a simple representation of a complex system, there are numerous associated caveats to our approach. We restricted our main analysis to only two types of heterogeneity (vulnerability and mixing). In reality, there are many different risk factors affecting transmission dynamics and vaccine uptake, such as age-dependent susceptibility and infectivity. However, we explored two types of heterogeneity alone in order to assess their effects in as simple a setting as possible, without the effects of additional factors. Furthermore, we considered the population split into equal halves. This is relaxed somewhat in further work in the Supplementary Information, in which we show that our main results are robust to this assumption. But a more realistic structure will involve more than two population groups - we outlined above how the analytical framework may be extended to more general population structures.

Even extrapolating from the insight that vaccinating mixers first may be optimal for both reducing disease and vaccine escape risk leaves the question of who those mixers are in practice. The group most central to transmission might not simply be a function of age. For example occupation could be taken into account, e.g. those whose roles necessitate contact with others. Another important dimension could be household structure, e.g. those who live with several other people. The interplay between mixing and vulnerability is also important, for example the epidemiological bridging roles played in connecting the most at risk to the wider community by health care workers, and household members of the extremely vulnerable.

Another simplification here is that we considered an epidemic in a single population. In reality, the risk of vaccine escape in any population depends not only on the possibility of vaccine escape variants arising locally, but also on the possibility of such variants being imported from elsewhere. Studies that seek to design vaccine strategies based on a range of objectives might also consider the risk of vaccine escape variants being imported when deciding how vaccines should be prioritised. Nonetheless, we contend that minimising the risk of vaccine escape locally should be a component of any objective function involving vaccine escape.

A further area of substantial oversimplification in the approach presented here is in the mechanism of vaccine escape, and specifically where generation and selection of escape mutants occurs. In practice, mutation, competition and selection will be operating at both within host and between hosts, which poses considerable challenges for capture by models [35]. Here we simply consider when, in terms of vaccination regimes, the pressures (selection within- and between- host combined) may be greatest, by considering transmission to vaccinated hosts. Though this is slightly relaxed to consider unvaccinated hosts also contributing to vaccine escape pressure in the Supplementary Information, this approach is still clearly very crude. An approach which included the circulation of any escape variants would need to develop assumptions about the dynamic effect of these variants, e.g. to what extent would variants abrogate the different vaccine effects of susceptibility, infectivity and disease reduction. An extreme approach, where vaccination is perfect against wild type but completely ineffective against an escape variant, found that establishment of the resistant strain was most likely when most of the population had been vaccinated [36].

A key assumption running through the approach here is that the effects of the vaccine feed through to reshape the overall epidemic, whether this is by design, or an unplanned benefit from a vaccine which is unexpectedly transmission-blocking. An alternative to this would be if non-pharmaceutical interventions (NPIs) are adaptive to prevalence and observed epidemic patterns, for example adjusting to keep the effective reproduction ratio just below 1, or prevalence below some target. In this case, the optimal allocation of the vaccine would no longer be controlling the epidemic directly, but should instead account for the level of NPIs that are needed along the way, where one of the objectives may be to minimise NPIs to mitigate their wider costs and harms. Further, the proportion protected by the vaccine is kept fixed under the period under consideration – a more realistic model of ongoing phased vaccine rollout would be warranted particularly in the context of a more detailed model of population heterogeneity as discussed above.

We made simplifying assumptions on implementation of vaccination to aid analytical tractability. Our approach does not address at all the kinetics of vaccine protection developing in the days/weeks following inoculation. We treated vaccination as a single dose vaccine, with the impact of two doses and dosage spacing a candidate for future research. In reality, we recognise this is a simplified representation of a complex process, whereby new supplies of vaccine are being manufactured and distributed over time, where second dose efficacy may change depending on the inter-dose separation, and that there can be an intrinsic feedback between vaccination rates and population level incidence. We also have not considered any waning in immunity, either that induced by infection or from receiving a vaccine. These and related partial immunity effects are areas which urgently require further attention, particularly in terms of addressing implications for vaccine escape [37, 38, 39, 40].

Despite these caveats, the model considered here, which includes important features of transmission and vaccination, enabled us to illustrate the key principle that the careful targeting of vaccines towards particular groups allows case numbers to be reduced while limiting the risk of vaccine escape. We hope that the proposal of general principles under this abstracted system will motivate further investigation under more detailed models.

4.3 Relation to classic theory and recent results

Our model demonstrating that intermediate levels of vaccination could be highest risk for pressure to generate a vaccine escape variant is resonant with established theory. In Grenfell *et al.*, in a phylodynamic model of a individual host, adaptation was highest at intermediate levels of immunity, driven by a maximal combination of viral abundance and strength of selection [41]. In the context of SARS-CoV-2, these favourable circumstances for antigenic evolution at the host level have been observed during prolonged COVID-19 infections in an immunocompromised individual [42]. Our population-level result here is analogous, with total infections playing the role of viral abundance and proportion of infections in vaccines playing the role of strength of selection. The importance of host heterogeneity in driving this maximal pathogen escape pressure has also been described in a bacteria and bacteriophage system [43].

Our study adds to a growing knowledge base on the potential of emergence of vaccine escape variants under the circumstances of widespread infection prevalence and different dosing regimen. An immuno-epidemiological model found under certain scenarios a one-dose policy may increase the potential for antigenic evolution; specifically, a vaccine strategy with a very long inter-dose period could lead to marginal short-term benefits (a decrease in the short-term burden) at the cost of a higher infection burden in the long term and substantially more potential for viral evolution [39]. However it has been argued that so long as vaccination provides some transmission-blocking effects, the corresponding reduction in prevalence should more than counterbalance concerns about antigenic escape pressure from delaying a second dose [17].

Limited vaccine supply has necessitated policymakers requesting advice on the priority order for SARS-CoV-2 vaccines. This guidance has had to be offered in the presence of limited data, with an expectation that additional knowledge would subsequently be accrued on vaccine efficacy for preventing infection. In the United Kingdom, dynamic infectious disease transmission models have been a contributor to the decision making process, with the advised ordering primarily going in descending age order [44, 45].

The result here that vaccinating mixers would be more effective to reduce severe disease than vaccinating the vulnerable for the majority of the reasonable parameter range for our model is in contrast to Moore *et al.* where vaccinating the oldest first was consistently the best approach to minimise deaths and disease [44]. There are a number of assumptions that differ between the two approaches, including vaccine effects and different population heterogeneity patterns. We are also considering here a vaccine rollout during higher prevalence (as opposed to vaccination before a possible next wave) and a different time period is under consideration. It is not clear which combination of these differences are key, but likely it will fundamentally come down to the relative utility of the vaccine in reducing overall prevalence versus directly protect the most vulnerable. Further work is needed to unpick these differences, and promising directions include exploring the assumed distributions of vulnerability and mixing among the population (see Supplementary Information).

Speculatively, is possible that with more of a spectrum of population heterogeneity the optimal strategy for mitigating both disease and the risk of vaccine escape could involve something like first vaccinating the most extremely vulnerable to immediately protect them, then pivoting to the core mixers to bring down prevalence and later back to vaccination of the moderately vulnerable. It is also likely that the optimal strategy in that scenario will depend on the rate of vaccine availability.

The key advance from our approach over others is that it has brought in considerations of vaccine escape pressure, albeit in crude form, together with also considering overall infection and disease rates in a heterogeneous population. However, our model is relatively simple. While this has allowed us to uncover broad insights, further explorations in more complex models will establish if the qualitative results are robust to including more realistic detail. We recommend that vaccine escape risks should

be included as part of considerations for vaccine strategies, and that further work is urgently needed here.

Acknowledgements

The authors thank Angela McLean for valuable discussions, and Matt Keeling and Deirdre Hollingsworth for helpful feedback on an earlier draft. This work was supported by UKRI through the JUNIPER modelling consortium [grant number MR/V038613/1].

References

- [1] World Health Organization. Coronavirus disease (COVID-19) weekly epidemiological update - 9 March 2021. https://www.who.int/docs/default-source/coronaviruse/situation-reports/20210309_weekly_epi_update_30.pdf, 2021. Accessed: 12 March 2021.
- [2] London School of Hygiene & Tropical Medicine. COVID-19 vaccine tracker - Living review. https://vac-lshtm.shinyapps.io/ncov_vaccine_landscape/, 2021. Accessed: 12 March 2021.
- [3] Fernando P Polack, Stephen J Thomas, Nicholas Kitchin, Judith Absalon, Alejandra Gurtman, Stephen Lockhart, John L Perez, Gonzalo Pérez Marc, Edson D Moreira, Cristiano Zerbini, et al. Safety and efficacy of the bnt162b2 mrna covid-19 vaccine. *New England Journal of Medicine*, 383(27):2603–2615, 2020.
- [4] Lindsey R Baden, Hana M El Sahly, Brandon Essink, Karen Kotloff, Sharon Frey, Rick Novak, David Diemert, Stephen A Spector, Nadine Rouphael, C Buddy Creech, et al. Efficacy and safety of the mrna-1273 sars-cov-2 vaccine. *New England Journal of Medicine*, 384(5):403–416, 2021.
- [5] Public Health England. Investigation of SARS-CoV-2 variants of concern in England: Technical briefing 6. https://assets.publishing.service.gov.uk/government/uploads/system/uploads/attachment_data/file/961299/Variants_of_Concern_VOC_Technical_Briefing_6_England-1.pdf, 2021. Accessed: 12 March 2021.
- [6] Nicholas G Davies, Sam Abbott, Rosanna C Barnard, Christopher I Jarvis, Adam J Kucharski, James Munday, Carl AB Pearson, Timothy W Russell, Damien C Tully, Alex D Washburne, et al. Estimated transmissibility and severity of novel sars-cov-2 variant of concern 202012/01 in england. *MedRxiv*, 2021.
- [7] Erik Volz, Swapnil Mishra, Meera Chand, Jeffrey C Barrett, Robert Johnson, Lily Geidelberg, Wes R Hinsley, Daniel J Laydon, Gavin Dabrera, Áine O’Toole, et al. Transmission of sars-cov-2 lineage b. 1.1.7 in england: Insights from linking epidemiological and genetic data. *medRxiv*, 2021.
- [8] Robert Challen, Ellen Brooks-Pollock, Jonathan M Read, Louise Dyson, Krasimira Tsaneva-Atanasova, and Leon Danon. Increased hazard of mortality in cases compatible with sars-cov-2 variant of concern 202012/1-a matched cohort study. *British Medical Journal*, 372:n579, 2021.
- [9] Peter Horby, Muge Cevik, Angela McLean, Andrew Rambaut, Peter Openshaw, Meera Chand, Jake Dunning, and Wendy Barclay. Sars-cov-2 immune escape variants. <https://www.gov.uk/government/publications/sars-cov-2-immunity-escape-variants-7-january-2021>, 2021. Accessed: 8 March 2021.
- [10] Laura Matrajt, Julia Eaton, Tiffany Leung, Dobromir Dimitrov, Joshua T Schiffer, David A Swan, and Holly Janes. Optimizing vaccine allocation for COVID-19 vaccines: critical role of single-dose vaccination. *medRxiv*, page 2020.12.31.20249099, 2021.
- [11] Nicola Mulberry, Paul F Tupper, Christopher MacCabe, Erin Kirwin, and Caroline Colijn. Vaccine Rollout Strategies: The Case for Vaccinating Essential Workers Early. *medRxiv*, 2021.
- [12] Wei Wang, Qianhui Wu, Juan Yang, Kaige Dong, Xinghui Chen, Xufang Bai, Xinhua Chen, Zhiyuan Chen, Cécile Viboud, Marco Ajelli, et al. Global, regional, and national estimates of target population sizes for covid-19 vaccination: descriptive study. *bmj*, 371, 2020.

- [13] Department of Health & Social Care. Joint Committee on Vaccination and Immunisation: advice on priority groups for COVID-19 vaccination, 30 December 2020. <https://www.gov.uk/government/publications/priority-groups-for-coronavirus-covid-19-vaccination-advice-from-the-jcvi-30-december-2020/joint-committee-on-vaccination-and-immunisation-advice-on-priority-groups-for-covid-19-vaccination-advice-from-the-jcvi-30-december-2020>. Accessed: 12 March 2021.
- [14] Department of Health & Social Care. JCVI interim statement on phase 2 of the COVID-19 vaccination programme. <https://www.gov.uk/government/publications/priority-groups-for-phase-2-of-the-coronavirus-covid-19-vaccination-programme-advice-from-the-jcvi-interim-statement-on-phase-2-of-the-covid-19-vaccination-programme>, 2021. Accessed: 12 March 2021.
- [15] M Elizabeth Halloran, Michael Haber, Ira M Longini Jr, and Claudio J Struchiner. Direct and indirect effects in vaccine efficacy and effectiveness. *American journal of epidemiology*, 133(4):323–331, 1991.
- [16] Odo Diekmann, Johan Andre Peter Heesterbeek, and Johan AJ Metz. On the definition and the computation of the basic reproduction ratio r_0 in models for infectious diseases in heterogeneous populations. *Journal of mathematical biology*, 28(4):365–382, 1990.
- [17] Sarah Cobey, Daniel B Larremore, Yonatan H. Grad, and Marc Lipsitch. Concerns about SARS-CoV-2 evolution should not hold back efforts to expand vaccination. *Pre-print, Harvard University*, 2021.
- [18] Thompson R N, Hill E M, and Gog J R. Sars-cov-2 incidence and vaccine escape. *Lancet Infectious Disease*, 2021.
- [19] Public Health England. Annex A: Report to JCVI on estimated efficacy of a single dose of Pfizer BioNTech (BNT162b2 mRNA) vaccine and of a single dose of ChAdOx1 vaccine (AZD1222). https://assets.publishing.service.gov.uk/government/uploads/system/uploads/attachment_data/file/949505/annex-a-phe-report-to-jcvi-on-estimated-efficacy-of-single-vaccine-dose.pdf, 2021. Accessed: 12 March 2021.
- [20] Merryn Voysey, Sue Ann Costa Clemens, Shabir A Madhi, Lily Y Weckx, Pedro M Folegatti, Parvinder K Aley, Brian Angus, Vicky L Baillie, Shaun L Barnabas, Qasim E Bhorat, et al. Single-dose administration and the influence of the timing of the booster dose on immunogenicity and efficacy of chadox1 nCoV-19 (azd1222) vaccine: a pooled analysis of four randomised trials. *The Lancet*, 2021.
- [21] Jamie Lopez Bernal, Nick Andrews, Charlotte Gower, Julia Stowe, Chris Robertson, Elise Tessier, Ruth Simmons, Simon Cottrell, Richard Robertson, Mark O’Doherty, Kevin Brown, Claire Cameron, Diane Stockton, Jim McMenamin, and Mary Ramsay. Early effectiveness of COVID-19 vaccination with BNT162b2 mRNA vaccine and ChAdOx1 adenovirus vector vaccine on symptomatic disease, hospitalisations and mortality in older adults in England. *medRxiv*, 2021.
- [22] Catherine Hyams, Robin Marlow, Zandile Maseko, Jade King, Lana Ward, Kazminder Fox, Robyn Heath, Anabella Turner, Zsolt Friedrich, Leigh Morrison, Gabriella Ruffino, Rupert Antico, David Adegbite, Zsuzsa Szasz-Benczur, Maria Garcia Gonzalez, Jennifer Oliver, Leon Danon, and Adam Finn. Assessing the effectiveness of bnt162b2 and chadox1ncov-19 covid-19 vaccination in prevention of hospitalisations in elderly and frail adults: A single centre test negative case-control study. *SSRN*, 2021.

- [23] Office for National Statistics. Coronavirus (COVID-19) weekly insights: latest health indicators in England, 12 February 2021. <https://www.ons.gov.uk/peoplepopulationandcommunity/healthandsocialcare/conditionsanddiseases/articles/coronaviruscovid19weeklyinsights/latesthealthindicatorsinengland12february2021#infections-hospital-admissions-and-deaths>, 2021. Accessed: 12 March 2021.
- [24] Public Health England. Analysis of the relationship between pre-existing health conditions, ethnicity and COVID-19. https://assets.publishing.service.gov.uk/government/uploads/system/uploads/attachment_data/file/942091/Summary_report_ethnicity_and_comorbidity.pdf, 2021. Accessed: 12 March 2021.
- [25] Yuanyuan Dong, Xi Mo, Yabin Hu, Xin Qi, Fang Jiang, Zhongyi Jiang, Shilu Tong, et al. Epidemiological characteristics of 2143 pediatric patients with 2019 coronavirus disease in china. *Pediatrics*, 145(6):e20200702, 2020.
- [26] Xiaoxia Lu, Liqiong Zhang, Hui Du, Jingjing Zhang, Yuan Y Li, Jingyu Qu, Wenxin Zhang, Youjie Wang, Shuangshuang Bao, Ying Li, et al. Sars-cov-2 infection in children. *New England Journal of Medicine*, 382(17):1663–1665, 2020.
- [27] Russell M Viner, Oliver T Mytton, Chris Bonell, GJ Melendez-Torres, Joseph Ward, Lee Hudson, Claire Waddington, James Thomas, Simon Russell, Fiona Van Der Klis, et al. Susceptibility to sars-cov-2 infection among children and adolescents compared with adults: a systematic review and meta-analysis. *JAMA pediatrics*, 2020.
- [28] Petra Klepac, Adam J Kucharski, Andrew JK Conlan, Stephen Kissler, Maria L Tang, Hannah Fry, and Julia R Gog. Contacts in context: large-scale setting-specific social mixing matrices from the bbc pandemic project. *medRxiv*, 2020.
- [29] Robert Verity, Lucy C Okell, Ilaria Dorigatti, Peter Winskill, Charles Whittaker, Natsuko Imai, Gina Cuomo-Dannenburg, Hayley Thompson, Patrick GT Walker, Han Fu, et al. Estimates of the severity of coronavirus disease 2019: a model-based analysis. *The Lancet infectious diseases*, 20(6):669–677, 2020.
- [30] Graziano Onder, Giovanni Rezza, and Silvio Brusaferro. Case-fatality rate and characteristics of patients dying in relation to covid-19 in italy. *Jama*, 323(18):1775–1776, 2020.
- [31] Ryosuke Omori, Kenji Mizumoto, and Gerardo Chowell. Changes in testing rates could mask the novel coronavirus disease (covid-19) growth rate. *International Journal of Infectious Diseases*, 94:116–118, 2020.
- [32] UK Government. The reproduction number (R) and growth rate. https://assets.publishing.service.gov.uk/government/uploads/system/uploads/attachment_data/file/965192/R-and-growth-rate-time-series-26-Feb-2021.ods, 2021. Accessed: 12 March 2021.
- [33] Luca Ferretti, Chris Wymant, Michelle Kendall, Lele Zhao, Anel Nurtay, Lucie Abeler-Dörner, Michael Parker, David Bonsall, and Christophe Fraser. Quantifying sars-cov-2 transmission suggests epidemic control with digital contact tracing. *Science*, 368(6491), 2020.
- [34] John Griffin, Miriam Casey, Áine Collins, Kevin Hunt, David McEvoy, Andrew Byrne, Conor McAloon, Ann Barber, Elizabeth Ann Lane, and Simon More. Rapid review of available evidence on the serial interval and generation time of covid-19. *BMJ open*, 10(11):e040263, 2020.
- [35] Julia R Gog, Lorenzo Pellis, James LN Wood, Angela R McLean, Nimalan Arinaminpathy, and James O Lloyd-Smith. Seven challenges in modeling pathogen dynamics within-host and across scales. *Epidemics*, 10:45–48, 2015.

- [36] Simon Rella, Yuliya Kulikova, Emmanouil Dermitzakis, and Fyodor Kondrashov. Sars-cov-2 transmission, vaccination rate and the fate of resistant strains. *medRxiv*, 2021.
- [37] Stephen M Kissler, Christine Tedijanto, Edward Goldstein, Yonatan H Grad, and Marc Lipsitch. Projecting the transmission dynamics of sars-cov-2 through the postpandemic period. *Science*, 368(6493):860–868, 2020.
- [38] Chadi M Saad-Roy, Caroline E Wagner, Rachel E Baker, Sinead E Morris, Jeremy Farrar, Andrea L Graham, Simon A Levin, Michael J Mina, C Jessica E Metcalf, and Bryan T Grenfell. Immune life history, vaccination, and the dynamics of sars-cov-2 over the next 5 years. *Science*, 370(6518):811–818, 2020.
- [39] Chadi M Saad-Roy, Sinead E Morris, C Jessica E Metcalf, Michael J Mina, Rachel E Baker, Jeremy Farrar, Edward C Holmes, Oliver Pybus, Andrea L Graham, Simon A Levin, et al. Epidemiological and evolutionary considerations of sars-cov-2 vaccine dosing regimes. *medRxiv*, 2021.
- [40] Jennie S Lavine, Ottar N Bjornstad, and Rustom Antia. Immunological characteristics govern the transition of covid-19 to endemicity. *Science*, 371(6530):741–745, 2021.
- [41] Bryan T Grenfell, Oliver G Pybus, Julia R Gog, James LN Wood, Janet M Daly, Jenny A Mumford, and Edward C Holmes. Unifying the epidemiological and evolutionary dynamics of pathogens. *science*, 303(5656):327–332, 2004.
- [42] Bina Choi, Manish C Choudhary, James Regan, Jeffrey A Sparks, Robert F Padera, Xueting Qiu, Isaac H Solomon, Hsiao-Hsuan Kuo, Julie Boucau, Kathryn Bowman, et al. Persistence and evolution of sars-cov-2 in an immunocompromised host. *New England Journal of Medicine*, 383(23):2291–2293, 2020.
- [43] Hélène Chabas, Sébastien Lion, Antoine Nicot, Sean Meaden, Stineke van Houte, Sylvain Moineau, Lindi M Wahl, Edze R Westra, and Sylvain Gandon. Evolutionary emergence of infectious diseases in heterogeneous host populations. *PLoS biology*, 16(9):e2006738, 2018.
- [44] Sam Moore, Edward M Hill, Louise Dyson, Michael Tildesley, and Matt J Keeling. Modelling optimal vaccination strategy for sars-cov-2 in the uk. *medRxiv*, 2020.
- [45] Sam Moore, Edward M Hill, Michael J Tildesley, Louise Dyson, and Matt J Keeling. Vaccination and non-pharmaceutical interventions: When can the uk relax about covid-19? *medRxiv*, 2021.

5 Supplementary Information

5.1 Sensitivity of vaccine escape results

Figure S1 is analogous to the bottom right panel of Figure 1, but exploring a range of different transmission-blocking parameters for the effect of vaccination. Essentially the same qualitative effect is visible except when the vaccine has no transmission-blocking effects ($\theta_S = \theta_I = 1$, top left in Figure S1). In this case, increasing vaccination will not alter the number of cases going forward, and the only effect in terms of vaccine escape is to increase the number of cases which are in vaccinated individuals.

Apart from when there is little or no transmission-blocking, the maximum pressure on vaccine escape is exerted for $v_1 = 1, v_2 = 0$: in other words, vaccinating all of the vulnerable and none of the mixers. Even with all of the vulnerable vaccinated, the effective reproduction ratio and thus total cases are held high by the core of transmission within the mixing group. This transmission spills into the vulnerable vaccinated as the vaccine is not fully blocking infection ($\theta_S > 0$), thus ensuring a continued significant number of infections in the vaccinated, providing the platform for vaccine escape pressure. This effect will disappear if $\theta_S = 0$ – for a vaccine with perfect prevention of infection there would be no cases amongst the vaccinated.

Our simple measure of vaccine escape pressure is directly proportional to the number of cases in vaccinated individuals. This strict assumption can be related by supposing that cases in unvaccinated individuals also contribute, but at some lower level (Figure S2). So long as the unvaccinated cases do not contribute much (around $< 10\%$ as much as vaccinated for these parameter values), then the picture is qualitatively unchanged. However if unvaccinated cases do contribute more significantly, then by force of numbers, the picture is changed, specifically vaccine escape pressure is not low for little or no vaccination. In Figure S2 the bottom left of the panels (corresponding to low v_1 and v_2) changes the most as the weight of unvaccinated contribution to escape is increased, going through the panels.

If the contribution of unvaccinated to escape pressure is larger still, vaccine pressure will simply correspond more closely to total cases. In this case, vaccine escape pressure will be most quickly reduced by vaccinating the mixers first, corresponding with results on minimising disease.

5.2 Effect of a short time horizon

Results in the main text are given for $G = 15$ which corresponds to choosing a time horizon of 15 generation times of infection. Some of the dynamics above are underpinned by vaccination pushing down the number of cases over this period. This effect will be less marked if instead our focus is on a shorter time interval, when vaccination has not had time to accumulate its impacts on the epidemic trajectory. Equivalent plots to the main text are shown here for $G = 5$ in Figures S3, S4 and S5 and the equivalent to Figures S1 and S2 are in Figures S6 and S7.

In Figure S3, the qualitative results are similar to before: vaccination universally reduces R, cases and disease, and vaccination escape is similar except the maximum is now achieved by vaccinating all the vulnerables and some of the mixers.

Figure S4 shows that there is a wider parameter range now where it is optimal to vaccinate the vulnerable before the mixers to reduce disease. This shift fits with the balance between direct effects of protection against disease and longer effects of reshaping the epidemic: the shorter focus with $G = 5$ means the former dominates for more of the parameter range. However, even here it remains optimal to vaccinate mixers to reduce disease so long as there significant transmission-blocking effects and

there is heterogeneity in mixing (e.g. $m = 2$ here).

Figure S5 shows the same monotonicity for the two factors that make up vaccine escape pressure: total cases and the proportion of these cases that are in vaccinateds. Here, however, again the change in balance of effects with the shorter G means that vaccine escape pressure is not always maximal at intermediate vaccination (e.g. for the purple and blue paths in bottom right panel). However, these effects will be restored for stronger transmission-blocking assumptions (see Figure S6 - by the bottom right ($\theta_S = \theta_I = 0.4$) any route to full vaccination must pass a phase of higher vaccine escape pressure.

Figure S7 combines exploring sensitivity to the assumption that unvaccinated individuals can contribute to vaccine escape with the shorter time horizon $G = 5$. Interestingly, the combination of the two effects again can restore the picture of maximal vaccine escape pressure when all of the vulnerable and none of the mixers are vaccinated.

5.3 Relaxing assumption of equal-sized populations

Figures S8 and S9 explore breaking the assumption that the vulnerable and mixer populations are of equal size. We use the methods for the extension to population structure, though we retain two populations ($n = 2$). The relative size of the proportion of the vulnerable is given by x (so $x_1 = x$ and $x_2 = 1 - x$, say). In both Figures S8 and S9, the rows correspond to $x = 2/8, 4/6, 6/4, 8/2$, corresponding to the vulnerable being 20%, 40%, 60%, 80% of the population respectively. It should be borne in mind that when the two groups are not equally sized, the effort to vaccinate proportions of each group (v_1 and v_2) are not so directly comparable. For the ratio of disease averted (W in main text), the proportion of either group vaccinated (ϵ in main text) is adjusted to be equal absolute size as x is varied.

Figure S8 shows that the results do not vary qualitatively as the proportions are varied, except for a large proportion of vulnerable, the maximal vaccine escape pressure moves from vaccinating all of the vulnerable to vaccinating only some of them. The range where allocating a fixed small amount of vaccine to the vulnerable is optimal shrinks when vulnerable are a larger proportion of the population (Figure S8 bottom right) and grows when they are a small proportion (Figure S8 top right).

However, we are concerned that varying proportions of vulnerable and mixers might not be comparing like with like: Figure S8 keeps $d = 10$ for the vulnerable group and $m = 2$ for the mixers. An alternative would be to adjust these so as to concentrate or dilute vulnerability and mixing as the group sizes changed. We investigate this in S9. As x is varied, we also vary the vulnerability and mixing parameters to in effect to keep a nominal excess mixing or vulnerability concentrated according to population sizes. We take $d_2 = 1$ still and $d_1 = 1 + \hat{d}/x$, so there is a baseline relative vulnerability of 1, and the excess of \hat{d} is shared between the vulnerable group of size x . Similarly with mixing: $m_1 = 1$, $m_2 = 1 + x\hat{m}$ so the extra mixing is shared among the mixing group which has relative size $1/x$. For the ratio of disease averted plots, the ranges of d and m are correspondingly varied. Setting $\hat{d} = 9$ and $\hat{m} = 1$, the default parameter set is recovered at $x = 1$.

Figure S9 shows that this adjustment still means that R , cases, disease and vaccine escape pressure do not vary much qualitatively. However now as plots for R , cases and disease against v_1 and v_2 they are also very similar quantitatively: this adjustment of d and m as functions of x keeps the plots almost invariant. The plot for vaccine escape pressure keeps the same overall shape, peaking with all the vulnerable vaccinated and none of the mixers. The ratio of disease averted is now sensitive to changing the proportion split, particularly at extremes. When all of the vulnerability is concentrated into a small proportion (Figure S9 top right panel) then vaccinating a fixed number of the vulnerable is clearly a better strategy for reducing disease than vaccinating the mixers. When the mixing is concentrated into a small core group (Figure S9 bottom right panel) the opposite is true, vaccination

of the mixers is vastly more effective in reducing disease.

It is unclear how exactly relative vulnerability and mixing should be modified here with changing population sizes. In practice of course this is likely to be further modulated by their being more than two groups, but rather a spectrum, and the relative balance in the most extreme groups for vulnerability and mixing are likely to be important in determining optimal vaccination strategy.

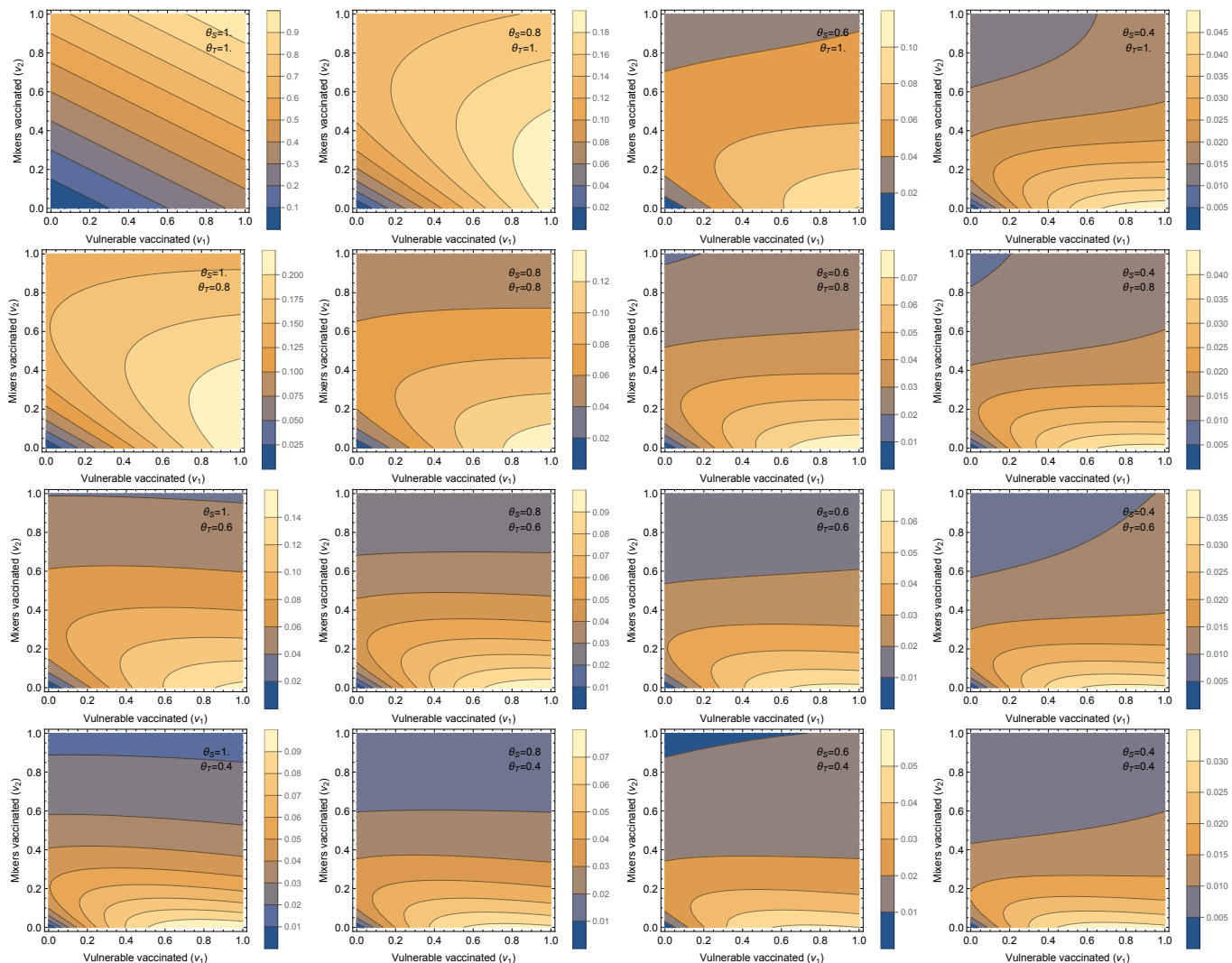


Figure S1: Vaccine escape pressure

Each panel shows a contour plot vaccine escape pressure (as described in main text) plotted by proportion of vulnerable and mixers vaccinated (v_1 and v_2 respectively on horizontal and vertical axes). Note that for clarity in showing the shapes here, the contours and colours vary between panels (as the top left panel requires a much larger range than the others).

Different panels vary the effects of the vaccine: the rows step through $\theta_T = 1, 0.8, 0.6, 0.4$ and the columns step through $\theta_S = 1, 0.8, 0.6, 0.4$. Thus the top left corresponds to the vaccine having no transmission blocking effects at all, and stepping right and down increases transmission blocking through reduced susceptibility or infectivity. All other parameters are in Figure 1.

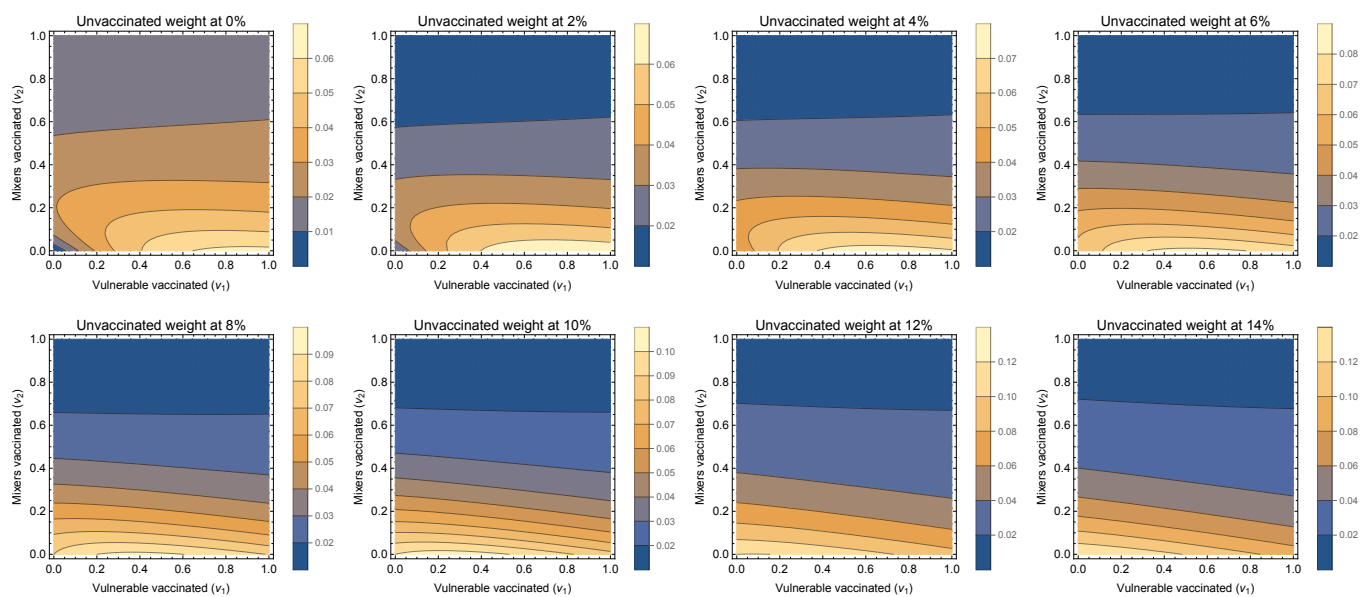


Figure S2: Sensitivity to contribution to vaccine escape

Vaccine pressure is now a linear combination of cases in vaccinated individuals (weight 100%) and unvaccinated individuals (weight varies). The weighting of the unvaccinated starts from zero and steps up by 2% in subsequent panels (left to right, top row then bottom row).

All parameters are as in Figure 1.

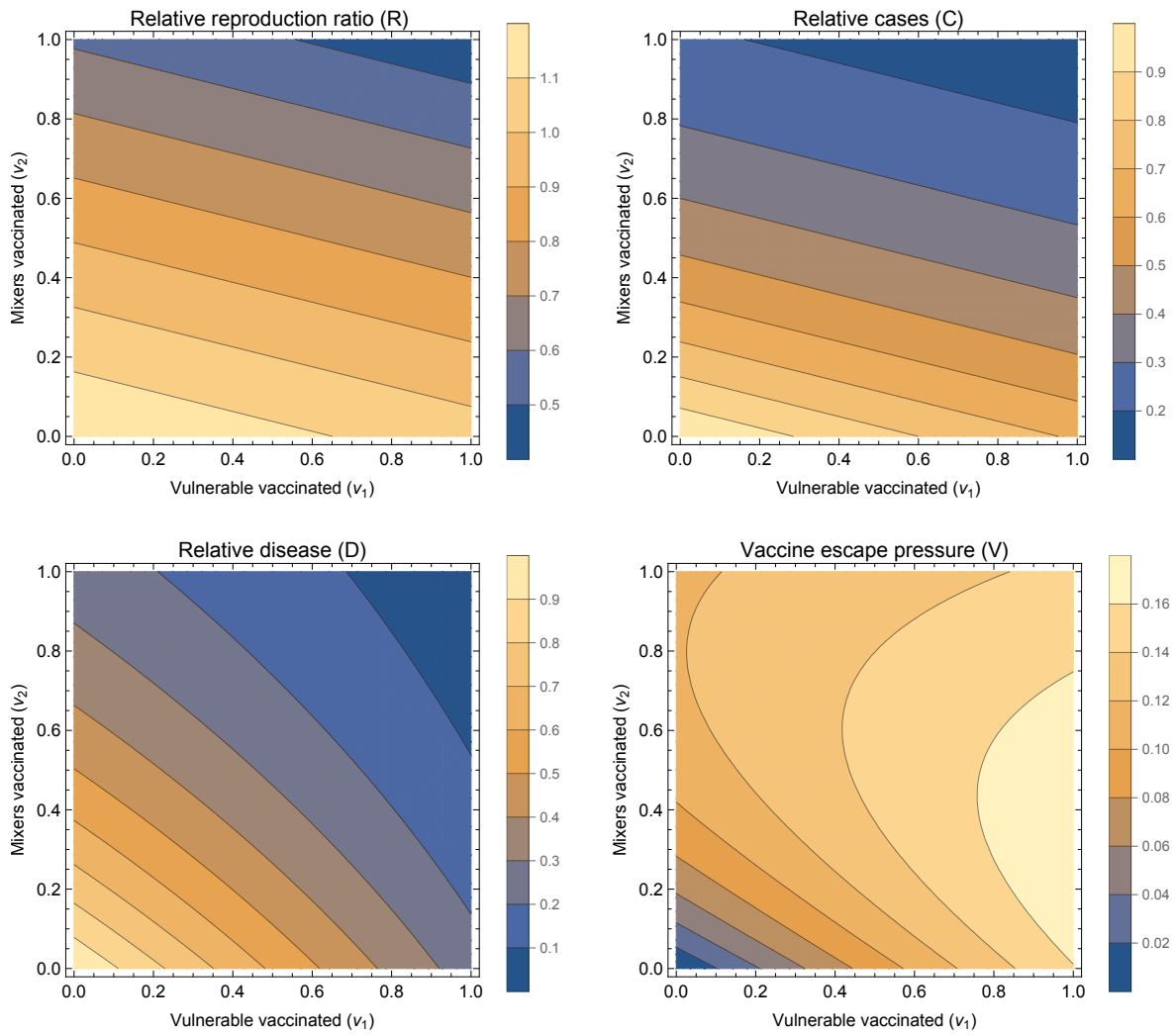


Figure S3: Summary outputs - with smaller G

This is as Figure 1, except $G = 5$.

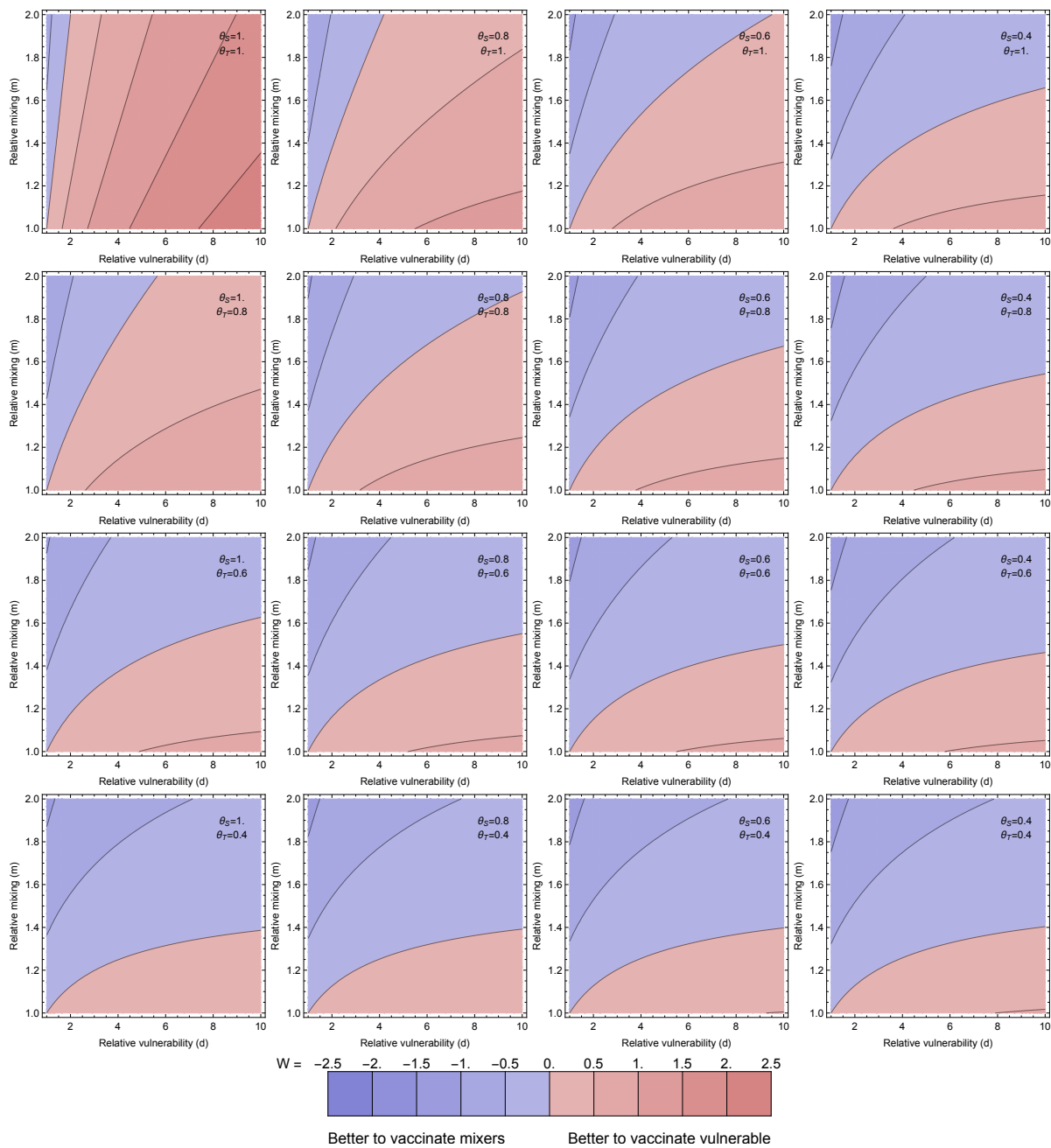


Figure S4: Optimal for averting disease - with smaller G

This is as Figure 2, except $G = 5$

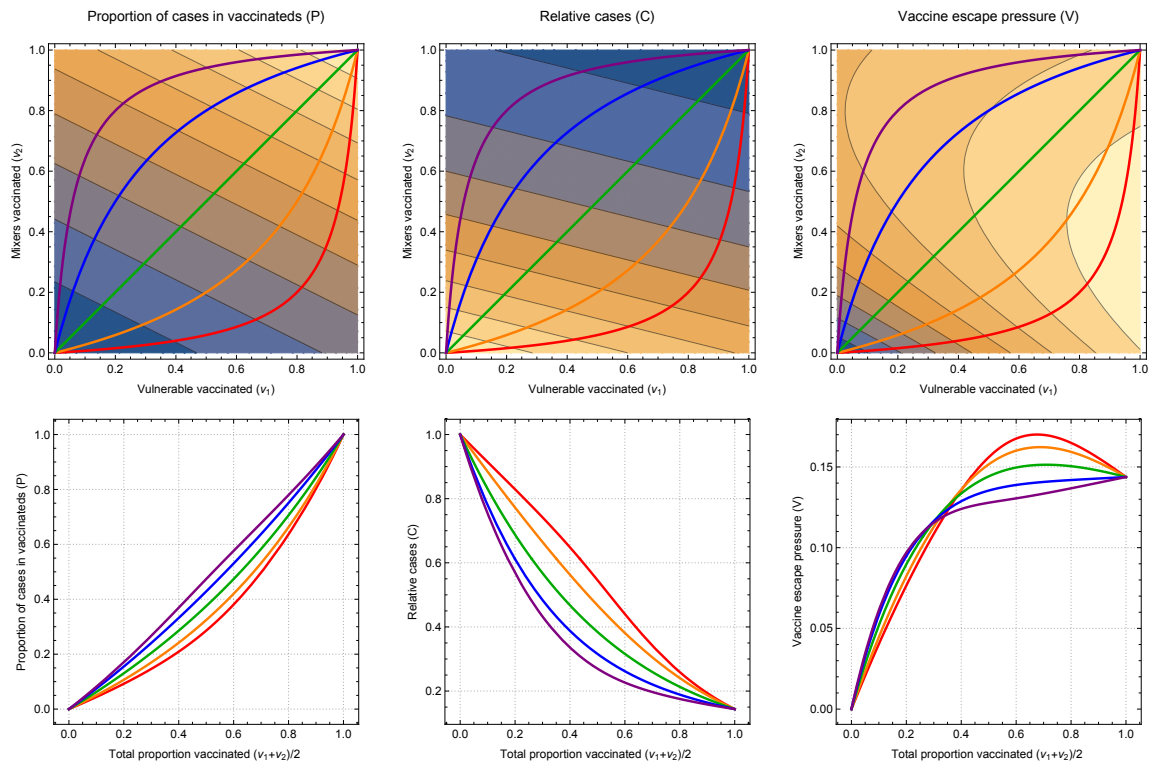


Figure S5: One dimensional paths to explore vaccine escape

This is as Figure 3, except $G = 5$

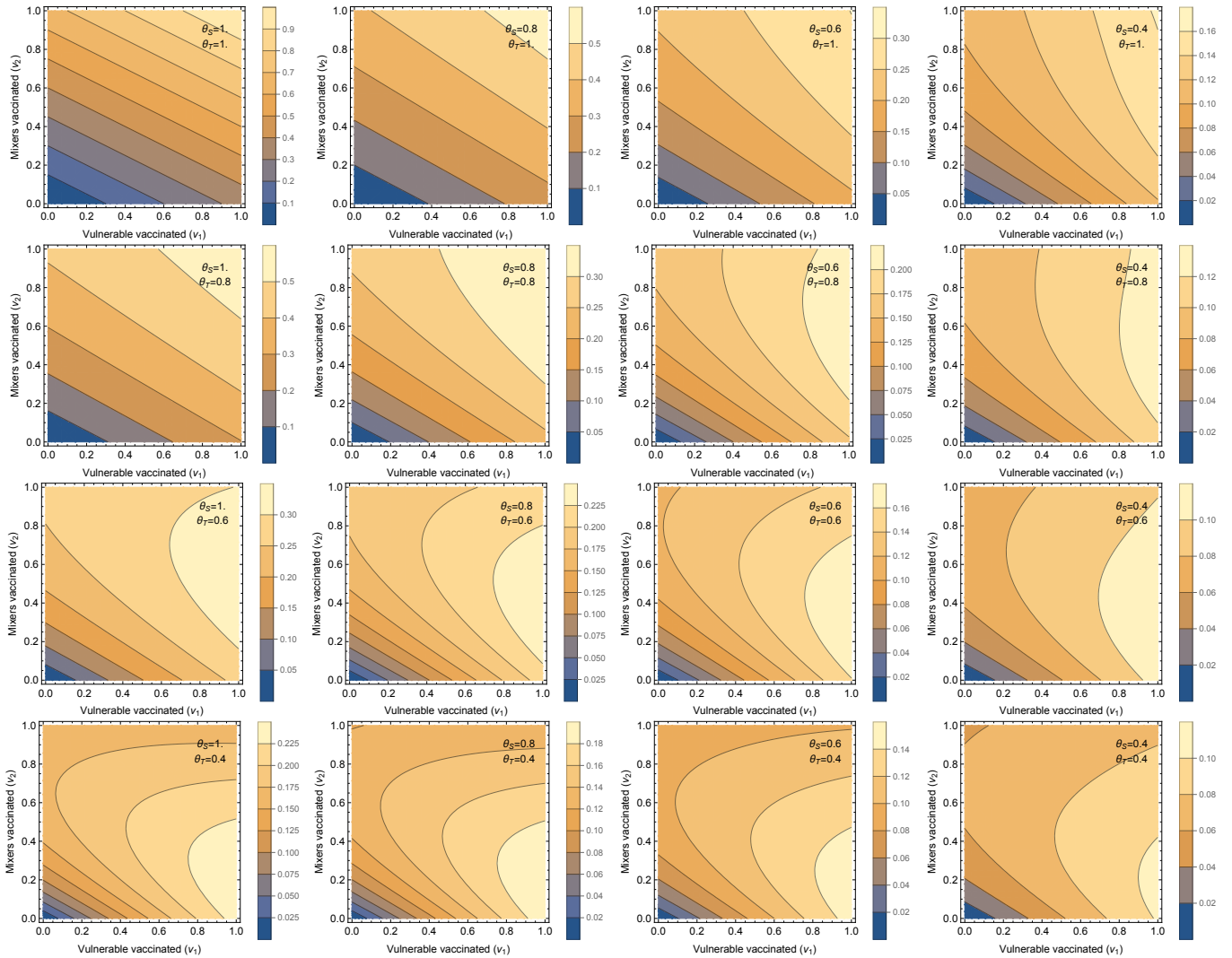


Figure S6: Vaccine escape pressure

This is as Figure S1, except $G = 5$

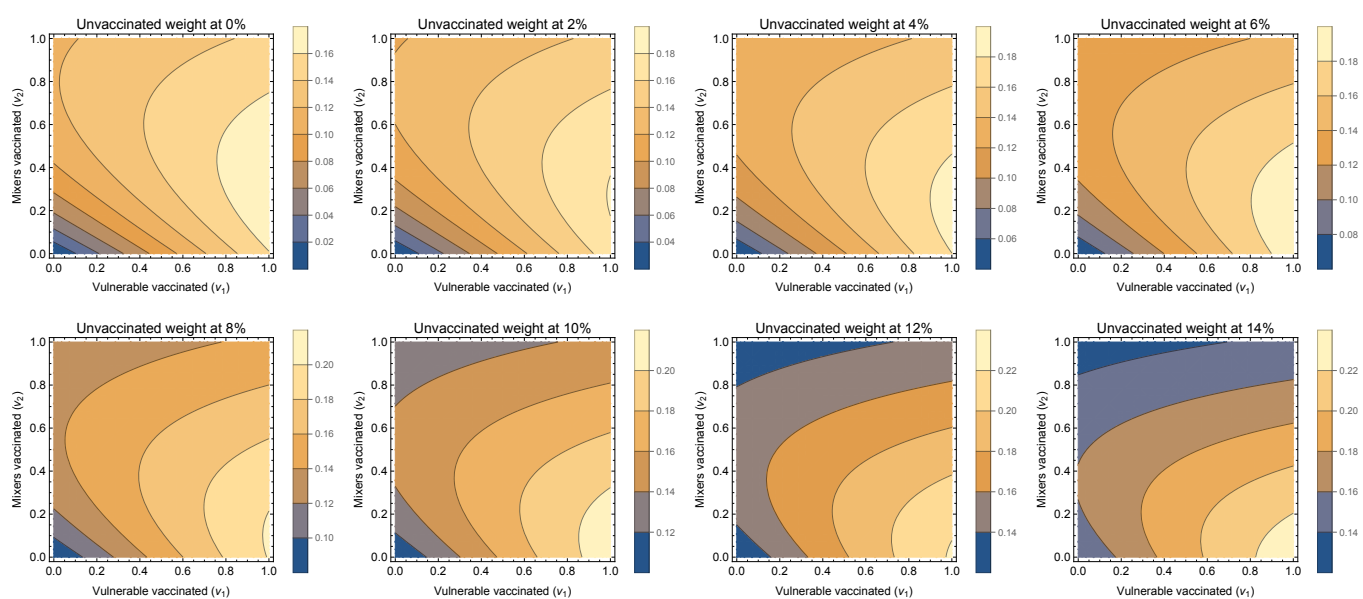


Figure S7: Sensitivity to vaccine escape pressure assumptions

This is as Figure S2, except $G = 5$

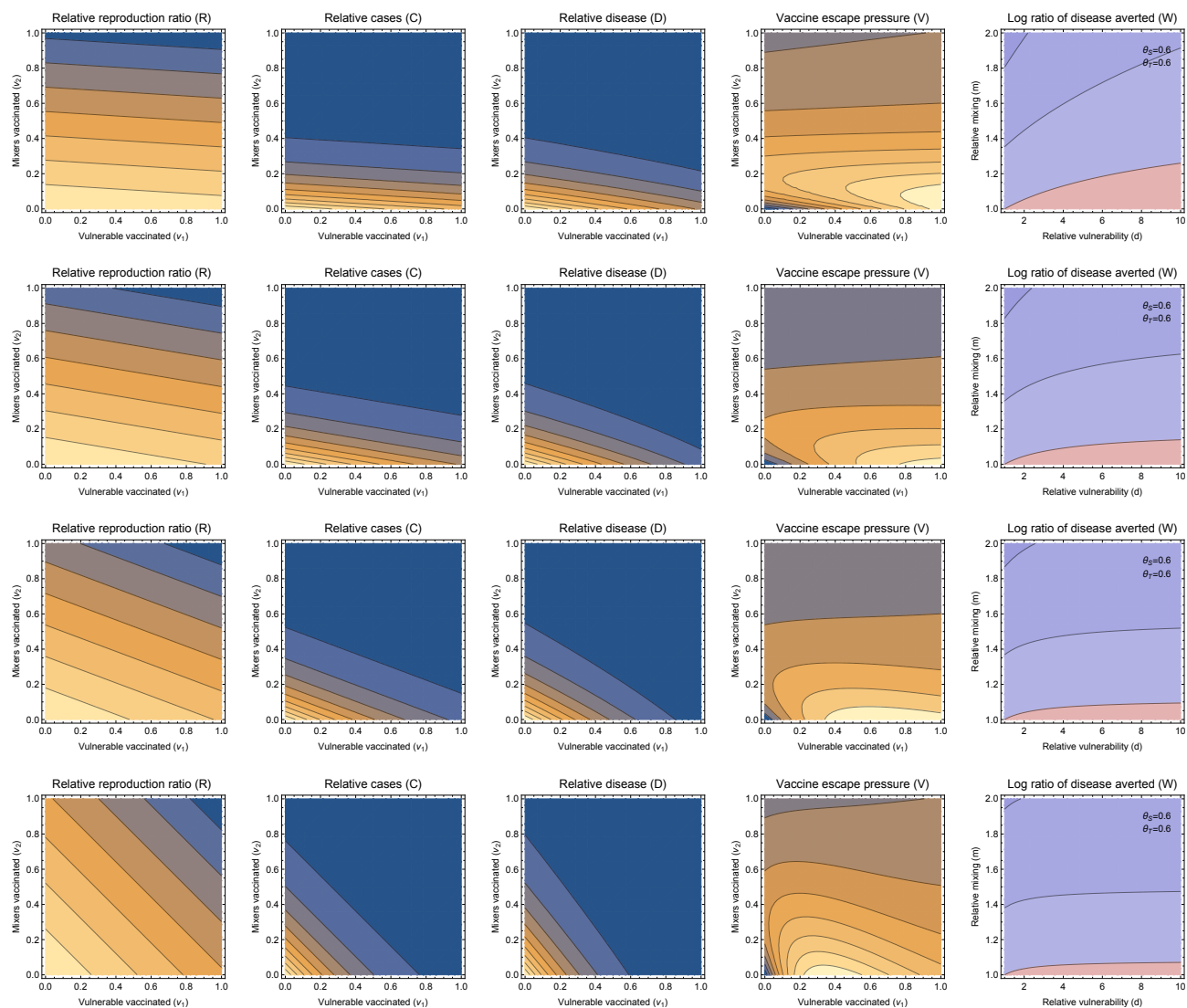


Figure S8: Changing proportions of vulnerable and mixers, fixed d and m

Different rows give sets of results different proportions of vulnerables and mixers corresponding to Figure 1 and the $\theta_S = \theta_I = 0.6$ panel of Figure 2 (and the contour colours also correspond to these plots in the main text). From top to bottom, vulnerables are 20%, 40%, 60%, 80% of the population and the rest are mixers.

Throughout, the relative vulnerability and mixing are kept fixed as the population proportion changes ($m = 2$ and $d = 10$).

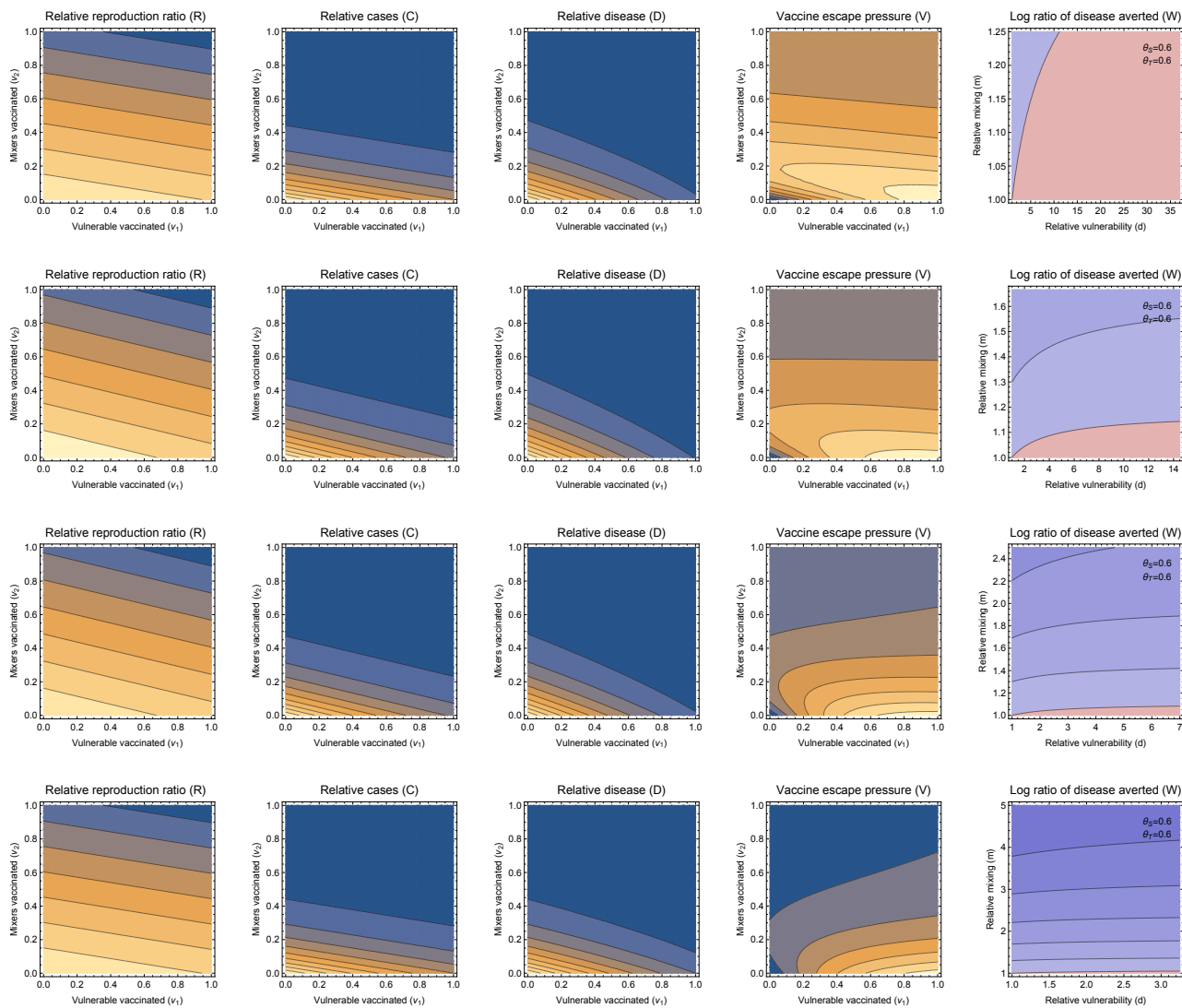


Figure S9: Changing proportions of vulnerable and mixers, adjusting d and m

Different rows give sets of results different proportions of vulnerables and mixers corresponding to Figure 1 and the $\theta_S = \theta_I = 0.6$ panel of Figure 2 (and the contour colours also correspond to these plots in the main text). From top to bottom, vulnerables are 20%, 40%, 60%, 80% of the population and the rest are mixers.

The relative vulnerability and mixing are varied as the population proportion changes, to keep the excess constant (described in the text).