

Fig. S1. An overview of sample processing for LC/MS-MS analysis.

PMBCs were isolated from patients or healthy control blood samples. Another PBMC sample was treated with pervanadate to be used as pTyr booster in the 11-plex TMT experiments. Protein materials were isolated and digested by LysC and trypsin. The samples were labelled with 3 sets of 11-plex TMT labelling reagents. The 11 peptide samples for each isobaric set were combined and incubated with SH2 superbinder beads. The bound peptides were enriched with tyrosine-phosphorylated peptides. The flow-through materials were used for analysis of the full proteome and the phosphoproteome (mainly for pSer and pThr peptides). The Ti^{4+} -IMAC resin was used for the phosphopeptide enrichment. Proteome and enriched phosphopeptides were fractionated using a high-pH fractionation kit prior to LC-MS/MS analysis.

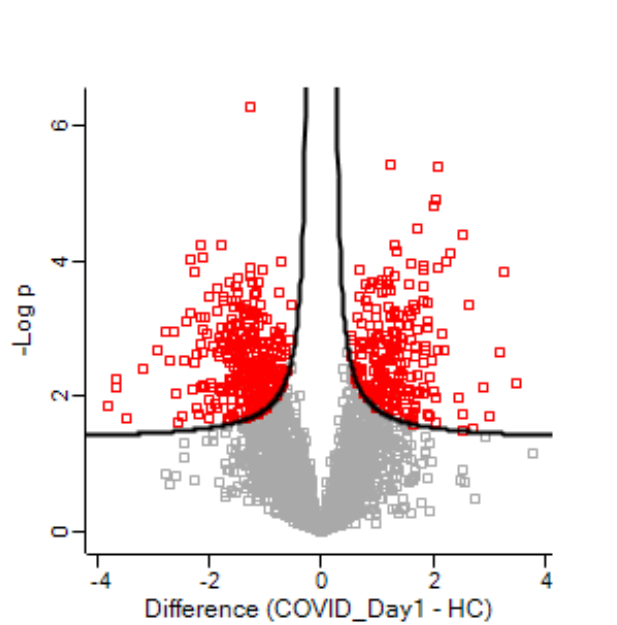
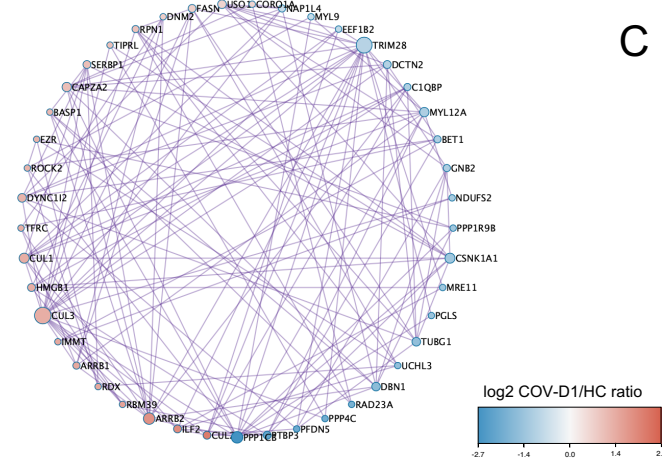


Fig. S2. Proteins differentially expressed in COVID-19+ ICU patients compared to healthy controls. A Volcano plot comparing the identified PBMC proteome between the COVID-19 patients (day 1 samples) and healthy controls. 521 proteins (marked red) were found significantly different between the two sample groups (FDR 5%).

A

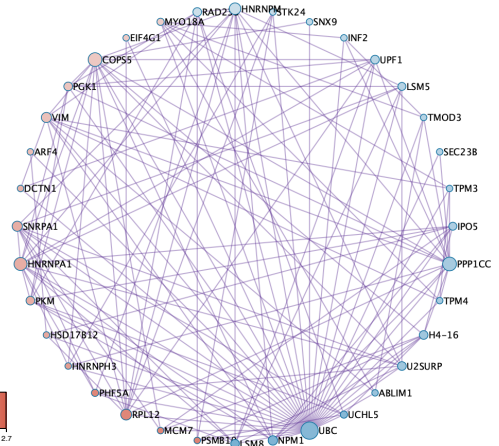
MCODE	GO	Description	Log10(P)
MCODE_1	GO:0044772	mitotic cell cycle phase transition	-8.7
MCODE_1	GO:0044770	cell cycle phase transition	-8.3
MCODE_1	ko04340	Hedgehog signaling pathway	-7.9
MCODE_2	R-HSA-8953854	Metabolism of RNA	-10.6
MCODE_2	ko03040	Spliceosome	-9.4
MCODE_2	hsa03040	Spliceosome	-9.4
MCODE_3	GO:0034655	nucleobase-containing compound catabolic process	-11.7
MCODE_3	GO:0046700	heterocycle catabolic process	-11.3
MCODE_3	GO:0044270	cellular nitrogen compound catabolic process	-11.3
MCODE_4	GO:0045055	regulated exocytosis	-8.6
MCODE_4	R-HSA-2262752	Cellular responses to stress	-6.8
MCODE_4	R-HSA-8953897	Cellular responses to external stimuli	-6.8

B



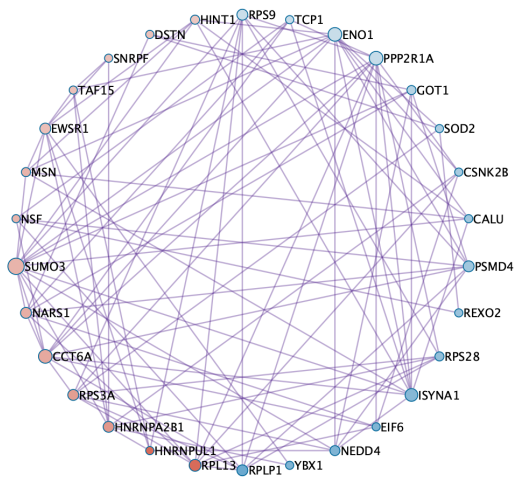
PPI network 1: Cell cycle phase transition;
Hedgehog signaling pathway

C



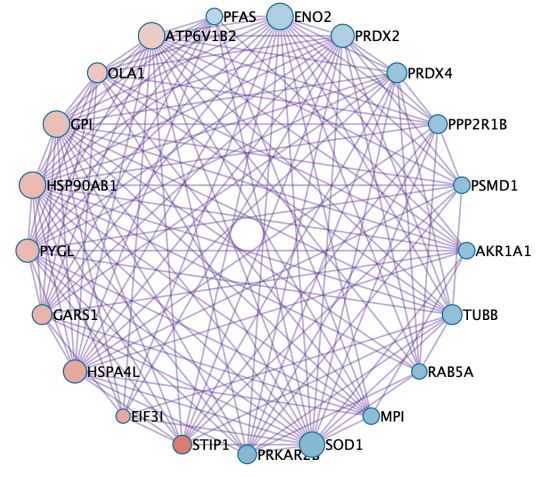
PPI network 2: Spliceosome; Metabolism of RNA

D



PPI network 3: Catabolic processes

E



PPI network 4: Regulated Exocytosis;
Responses to stress and external stimuli

Fig. S3. PPI network clustering by Metascape on the differentially expressed proteins in the COVID-19 PBMCs. (A) A summary of enriched networks and the associated top 3 functional annotation terms. MCODE_1 to 4 correspond to the depicted PPI network 1-4 below. (B-E) PPI networks significantly enriched in the COVID-19 PMBCs. A color gradient from cyan to orange was used to indicate decreased to increased expression between the COV-D1 and HC groups with the dot size indicating Log₂ of the difference (from -2.7 to 2.5).

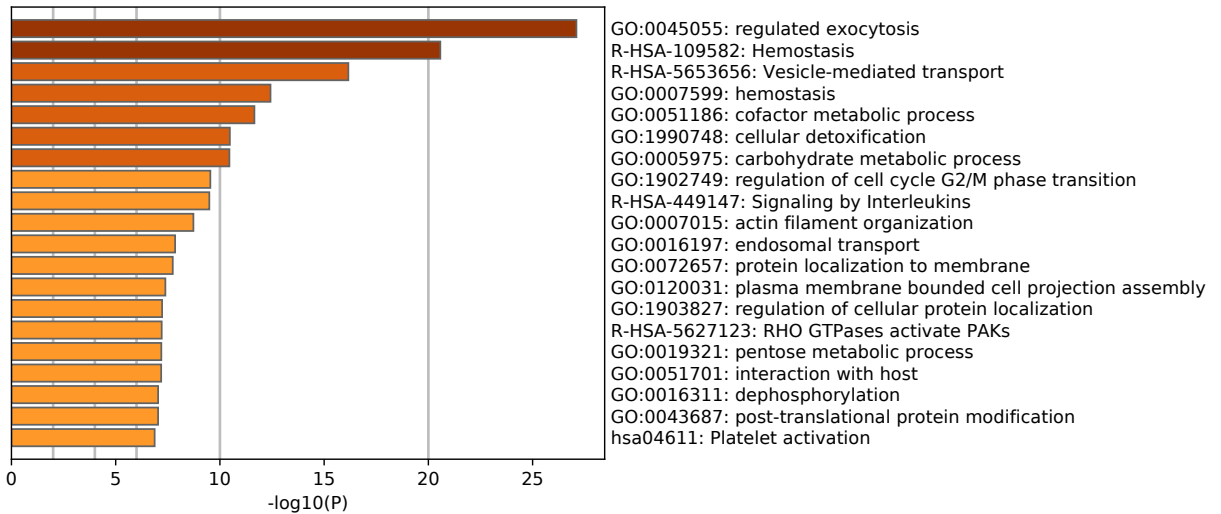
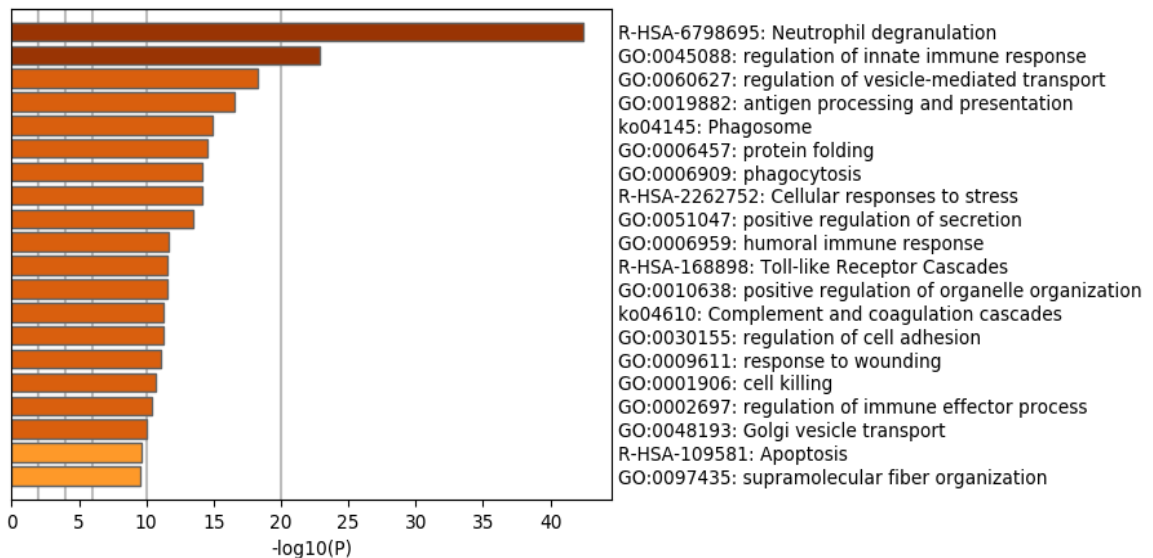
A**B**

Fig. S4. Gene Ontology (GO) enrichment analysis of proteins differentially expressed between patients and healthy controls. (A) Enriched processes or functions for the Cluster 1 proteins (in Fig. 1A). **(B)** Enriched processes or functions for the Cluster 5 proteins (in Fig. 1A).

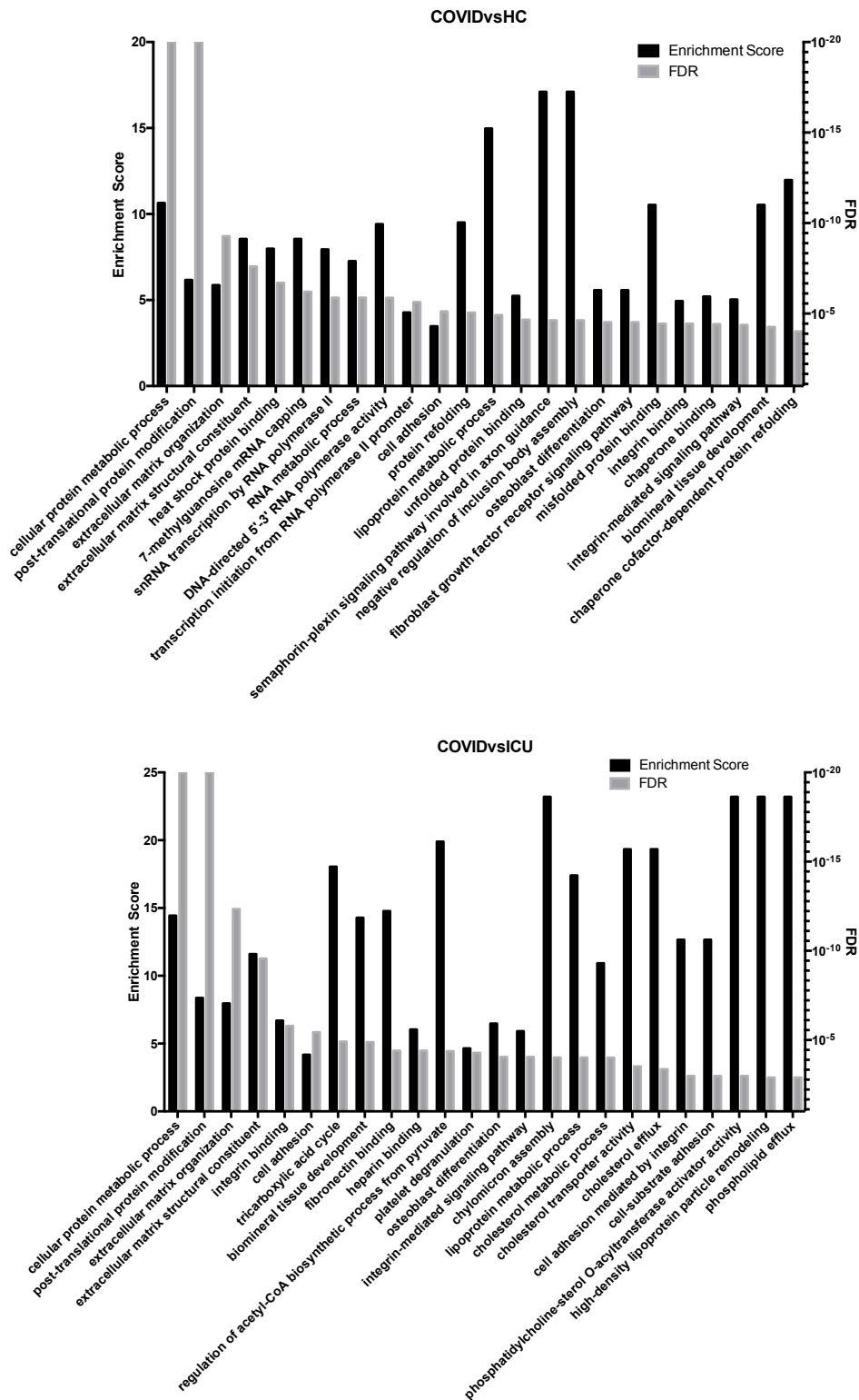
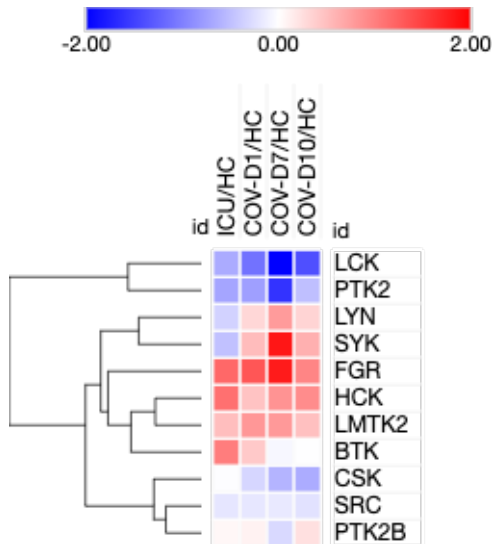


Fig. S5. Distinguishing features of the COVID-19 PBMC phosphoproteome compared to that of the healthy controls or ICU patients. Biological processes significantly enriched between (A) COVID-Day1 and HC, and, (B) COVID Day1 and ICU based on PHOTON analysis. The enrichment score and FDR (Benjamini-Hochberg) q -value from Fisher's exact test are shown on the y-axis.

A



B

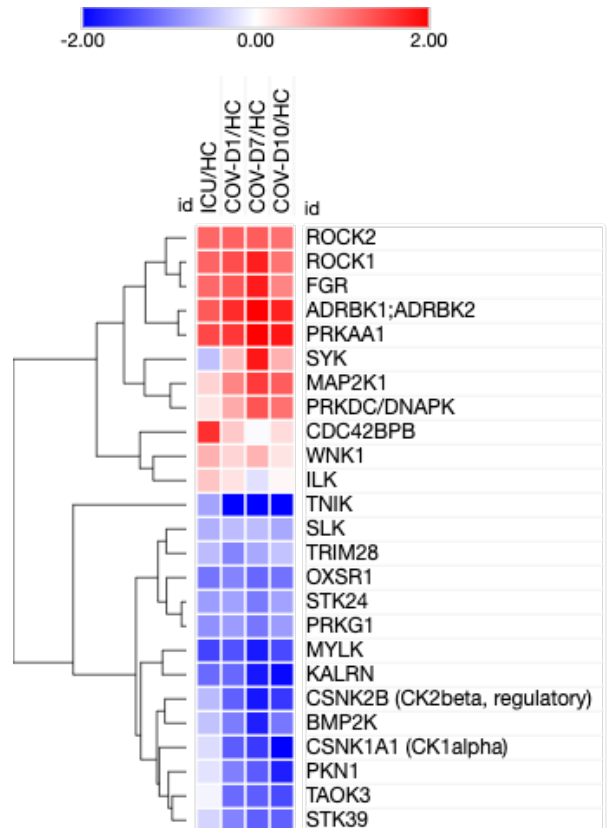
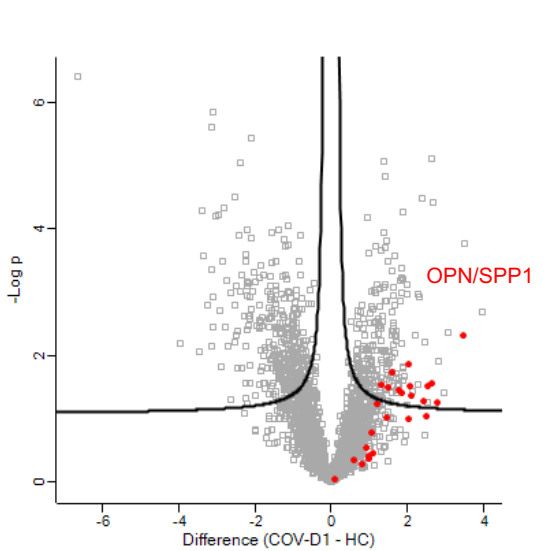


Fig. S7. Kinase protein abundance in PBMC samples from patients relative to healthy controls. The scale is in log₂ ratio between the sample groups. (A) All tyrosine kinases. (B) All kinases with ANOVA FDR < 10% between the three groups (COV-D1, ICU, HC).

A



B

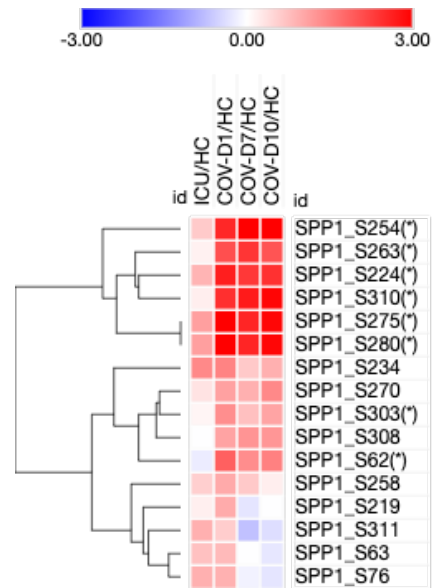


Fig. S8. OPN/SPP1 phosphorylation is significantly upregulated in the COVID-19 PBMCs.

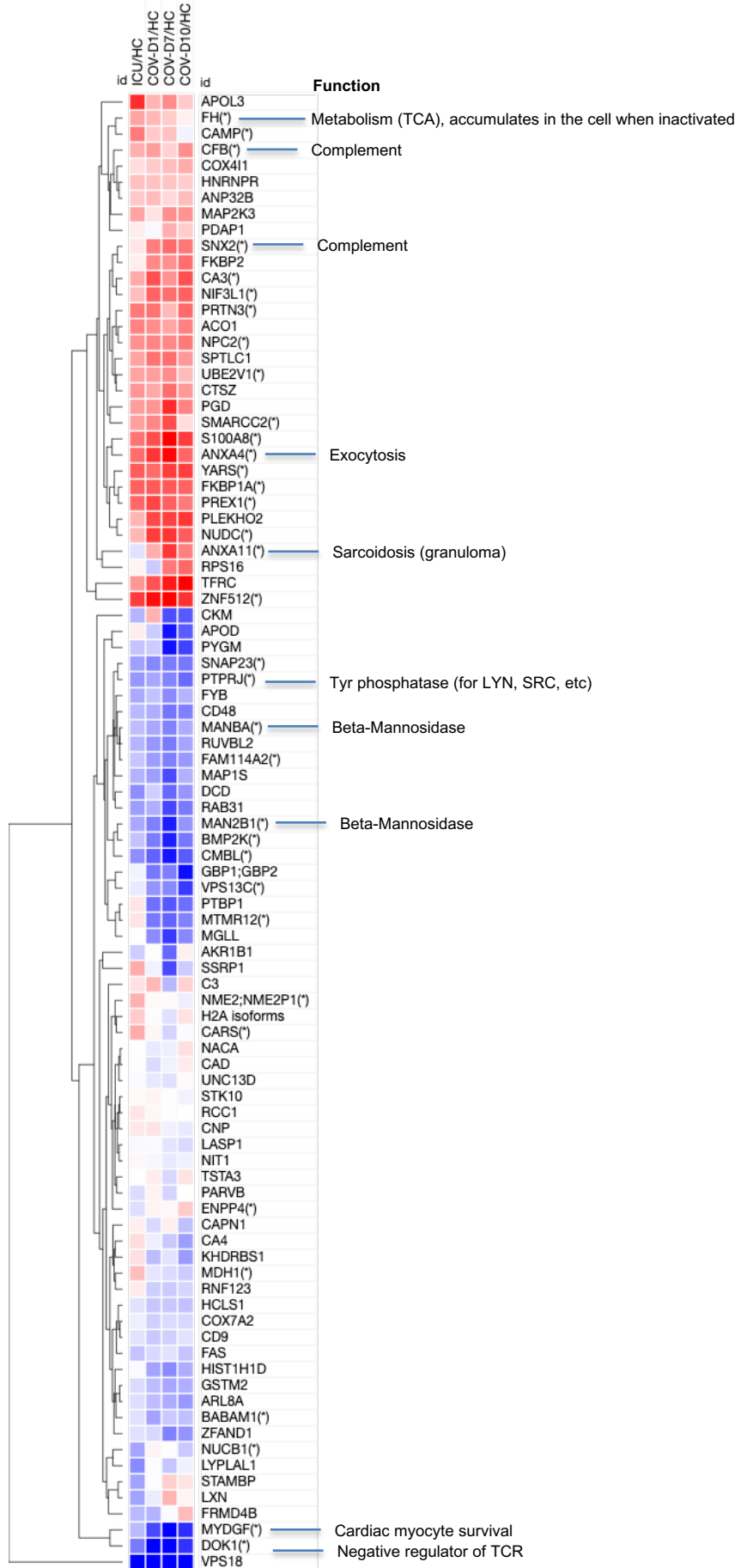
(A) A volcano plot comparing the identified pSer/pThr sites between the COV-D1 and HC1 samples. The OPN/SPP1 phosphorylation sites are identified in red. (B) A heatmap showing the intensities of all SPP1 phosphosites in the patient PBMCs relative to the healthy control. The significant pSer sites are identified by asterisks.



Fig. S9. STAT1 regulated gene expression in the COV and ICU patients. Log₂ fold change

in expression relative to the HC group is shown. The heatmap is generated color gradient from blue to red, representing decreased to increased (Log₂ fold change) expression.

Significantly regulated proteins are identified in asterisks with brief functional annotation on the right.

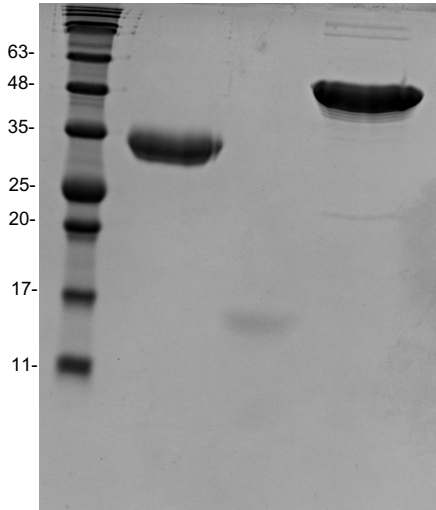


Recombinant SARS-CoV-2 Spike Protein (S-RBD)
(residues 319-541)
ThermoFisher RP-87678

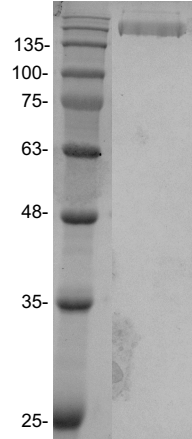
Recombinant SARS-CoV-2 Nucleocapsid Protein
(residues 1-419)
RayBiotech 230-01104

S-RBD

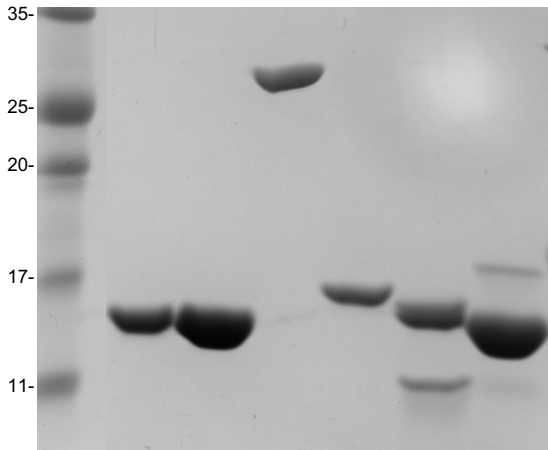
N-FL



S-Ectodomain



NSP3 NSP3
N-RBD N-dimer unique ADRP NSP4 NSP9



NSP3 NSP3
NAB PLPro NSP5 NSP7 NSP8 NSP10 NSP16

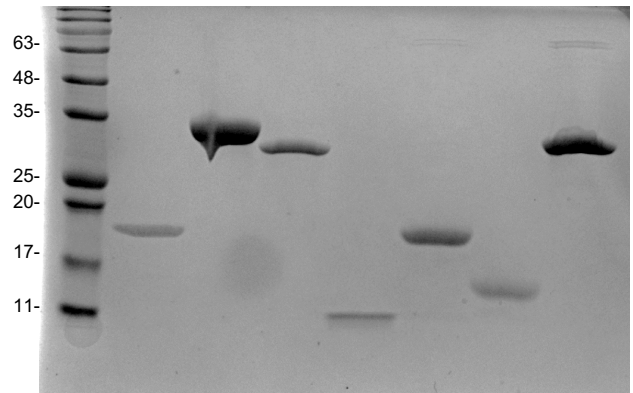
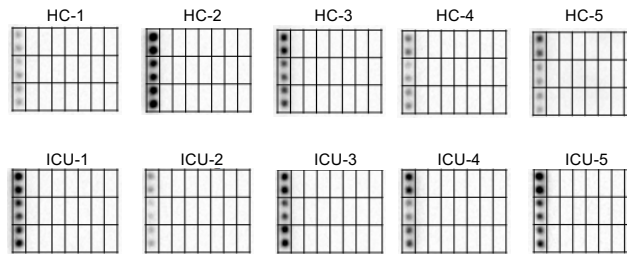


Fig. S10. SDS PAGE images of the recombinant SARS-CoV-2 proteins used in the antigen array.

A

IgG	PBS	S-RBD	PBS	S-Ecto	PBS	NSP3-u	NSP3-ADRP
IgG	NSP3-PLPro	NSP3nab	NSP4	NSP5	NSP7	NSP8	NSP9
IgG	NSP10	NSP16	PBS	N-FL	PBS	N-Dimer	N-RBD

B



C

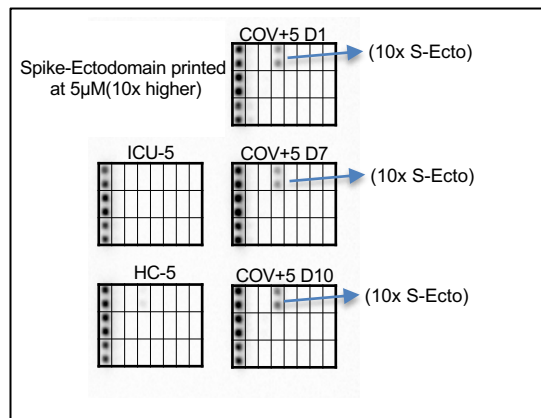


Fig. S11. SARS-CoV-2 Proteome antigen array. (A) Identity and position of proteins printed in the proteome array (see also Fig. 5). (B) The plasma from the ICU (COVID-19 negative) and healthy control group showed no antibody response to any virus antigen. (C) A proteome array printed with 10 x spike Ecto domain ($5 \mu\text{M}$) was screened with the plasma samples from the COV+5 patient