

1 **CASE SERIES**

2  
3  
4 **TITLE**

5 Genetic screening for *TLR7* variants in young and previously healthy men with severe  
6 COVID-19: a case series.

7  
8  
9 **AUTHOR NAMES AND AFFILIATIONS**

10 Xavier Solanich, MD<sup>1,†,\*</sup>, Gardenia Vargas-Parra, MD, PhD<sup>2,3,†</sup>, Caspar I. van der  
11 Made<sup>4,7,†</sup>, Annet Simons<sup>4</sup>, Janneke Schuurs-Hoeijmakers<sup>4</sup>, Arnau Antolí, MD<sup>1</sup>, Jesús  
12 del Valle, PhD<sup>2,3</sup>, Gemma Rocamora-Blanch, MD<sup>1</sup>, Fernando Setién, PhD<sup>8</sup>, Manel  
13 Esteller, MD, PhD<sup>3,8-10</sup>, Antoni Riera-Mestre, MD, PhD<sup>1,11</sup>, Joan Sabater-Riera, MD,  
14 PhD<sup>12</sup>, Gabriel Capellá, MD, PhD<sup>2,3</sup>, Frank L. van de Veerdonk<sup>5-7</sup>, Ben van der  
15 Hoven<sup>13</sup>, Xavier Corbella, MD, PhD<sup>1,14</sup>, Alexander Hoischen<sup>4-7,\*</sup> and Conxi Lázaro,  
16 PhD<sup>2,3,\*</sup>

17  
18  
19 <sup>1</sup> Department of Medicina Interna. Hospital Universitari de Bellvitge - IDIBELL.  
20 L'Hospitalet de Llobregat, Barcelona, Spain

21 <sup>2</sup> Hereditary Cancer Program, Catalan Institute of Oncology, Program in Molecular  
22 Mechanisms and Experimental Therapy in Oncology (Oncobell), IDIBELL,  
23 L'Hospitalet de Llobregat, Barcelona, Spain

24 <sup>3</sup> Centro de Investigación Biomédica en Red de Cáncer (CIBERONC), Spain

25 <sup>4</sup> Department of Human Genetics, Radboud University Medical Center, Nijmegen, the  
26 Netherlands

27 <sup>5</sup> Radboud University Medical Center Center for Infectious Diseases (RCI), Department  
28 of Internal Medicine, Radboud University Medical Center, Nijmegen, the Netherlands

29 <sup>6</sup> Radboud Institute for Molecular Life Sciences, Radboud University Medical Center,  
30 Nijmegen, the Netherlands

31 <sup>7</sup> Radboud Expertise Center for Immunodeficiency and Autoinflammation and Radboud  
32 Center for Infectious Disease (RCI), Radboud University Medical Center, Nijmegen,  
33 the Netherlands

34 <sup>8</sup> Josep Carreras Leukaemia Research Institute (IJC), Badalona, Barcelona, Spain

35 <sup>9</sup> Institutio Catalana de Recerca i Estudis Avançats (ICREA), Barcelona, Spain

36 <sup>10</sup> Physiological Sciences Department, School of Medicine and Health Sciences,  
37 University of Barcelona (UB), Barcelona, Spain

38 <sup>11</sup> Faculty of Medicine and Health Sciences, Universitat de Barcelona, Barcelona, Spain

39 <sup>12</sup> Department of intensive Care. Hospital Universitari de Bellvitge - IDIBELL.  
40 L'Hospitalet de Llobregat, Barcelona, Spain

41 <sup>13</sup> Department of Intensive Care, Erasmus MC, Rotterdam, the Netherlands

42 <sup>14</sup> School of Medicine, Universitat Internacional de Catalunya, Barcelona, Spain.

43  
44 <sup>†</sup> These authors contributed equally and should be considered first co-authors

45 <sup>\*</sup> These three authors should be considered senior and corresponding authors

46 **CORRESPONDING AUTHOR**

47 Xavier Solanich, MD

48 Department of Internal Medicine,

49 Bellvitge University Hospital, Bellvitge Biomedical Research Institute (IDIBELL)

50 Feixa Llarga sn. 08907 L'Hospitalet de Llobregat (Barcelona), Spain

51 Phone: 0034 96 260 2324

52 Fax: (+34) 93 260 7967

53 Email: [xsolanich@bellvitgehospital.cat](mailto:xsolanich@bellvitgehospital.cat)

54

55

56 Alexander Hoischen

57 Departments of Human Genetics and Internal Medicine

58 Radboud University Medical Center

59 Nijmegen, the Netherlands

60 Phone: (+31) 24 3619639

61 Email: [Alexander.Hoischen@radboudumc.nl](mailto:Alexander.Hoischen@radboudumc.nl)

62

63

64 Conxi Lázaro, Ph.D.

65 Hereditary Cancer Program,

66 Catalan Institute of Oncology, IDIBELL and CIBERONC.

67 Av. Gran Via 199-203. 08908 Hospitalet de Llobregat (Barcelona), Spain.

68 Phone: (+34) 93 2607145

69 E-mail: [clazaro@iconcologia.net](mailto:clazaro@iconcologia.net)

70

71

72 **KEYWORDS**

73 COVID-19; SARS-CoV-2; host genetics; *TLR7*; immunodeficiency; rare variants;

74 genetic screening

75 **ABSTRACT**

76 Advanced age, male sex and chronic comorbidities are associated with severe COVID-  
77 19. However, these general risk factors cannot explain why critical illness occurs in  
78 young and apparently healthy individuals. In the past months, several publications have  
79 identified susceptibility loci and genes using comprehensive GWAS studies or genome,  
80 exome or candidate genes analysis. A recent study reported rare, loss-of-function *TLR7*  
81 variants in otherwise healthy young brother pairs from two families with severe  
82 COVID-19. We aimed to prospectively study the prevalence of rare X-chromosomal  
83 *TLR7* genetic variants in our cohort of young male patients with severe COVID-19. We  
84 recruited 13 patients  $\leq 50$  years who had no risk factors known to be associated with  
85 severe disease. We studied the entire *TLR7* coding region and identified two missense  
86 variants (p.Asn215Ser, c.644A>G and p.Trp933Arg, c.2797T>C) in two out of 13 cases  
87 (15.4%). These variants were not previously reported in population control databases  
88 (gnomAD) and were predicted to be damaging by all *in silico* predictors. The male  
89 index patients were between 25 and 30 years old and had no apparent comorbidities.  
90 The *TLR7* p.Asn215Ser co-segregated in 2 first-degree relatives severely affected by  
91 COVID-19, in a younger previously healthy the variant was found in hemizygous state ,  
92 and in an older than 60 was in heterozygous state. No family members were available  
93 for testing the segregation of the p.Trp933Arg variant. These results further support that  
94 susceptibility to severe COVID-19 could be determined by inherited rare genetic  
95 variants in *TLR7*. Understanding the causes and mechanisms of life-threatening  
96 COVID-19 is crucial and could lead to novel preventive and therapeutic options. This  
97 study supports a rationale for the genetic screening for *TLR7* variants in young men  
98 with severe COVID-19 in the absence of other relevant risk factors. A diagnosis of  
99 *TLR7* deficiency could not only inform on treatment options for the patient, but it also  
100 enables for pre-symptomatic testing of at-risk male relatives with the possibility of  
101 instituting early preventive and therapeutic interventions.

102

## 103 INTRODUCTION

104 A proportion of patients with COVID-19 evolve to fatal lung injury and multi-organ  
105 failure due to systemic host-immune inflammatory processes triggered by the viral  
106 infection [1]. Advanced age, male sex and chronic disease such as diabetes and obesity  
107 are common in patients with more severe forms of COVID-19 [2-4]. However, these  
108 risk factors cannot explain why critical disease also occurs in younger (below 50 years  
109 of age) and apparently healthy individuals.

110 In the past months, several publications identified susceptibility loci and genes using  
111 comprehensive GWAS studies or genome, exome or candidate genes analysis. Hence,  
112 human genetic loci associated with a higher viral binding and entry comprised the *ABO*  
113 blood group locus [5-7], *ACE2* and *TMPRSS2* [8]. Genetic loci reported to predispose to  
114 higher severity include the 3p21.31 gene cluster [5], HLA-B\*46:01 and HLA-B\*15:03  
115 [9], *APOE* [10], *IFITM3* [11], as well as several genes encoding for members of the  
116 type I/III interferon (IFN) pathway [12] including the Toll-Like Receptor 7 (*TLR7*) gene  
117 [13]. The Barcelona research group collaborated with a large genetic sequencing effort  
118 to define host risk factors to severe SARS-CoV-2 infection, analyzing exome or genome  
119 sequences from 659 patients with severe COVID-19 for rare pathogenic variants that  
120 could be associated with life-threatening disease [12]. This collaborative study was  
121 focused on the type I IFN pathway and analyzed 13 candidate genes (*TLR3*, *IRF7*, *IRF9*,  
122 *TICAM1/TRIF*, *UNC93B1*, *TRAF3*, *TBK1*, *IRF3*, *NEMO/IKBKG*, *IFNAR1*, *IFNAR2*,  
123 *STAT1* and *STAT2*) that have previously been linked with susceptibility to other viral  
124 infections. Loss of function variants were identified in 3.5% (23/659) of cases. In  
125 addition, a study of 156 Italian and Spanish <60 year-old patients with severe COVID-  
126 19, *TLR7* rare, but not entirely unique, missense variants were found in almost 4% and  
127 in none of the 122 oligo- or asymptomatic controls. Expression profiles of *TLR7* and  
128 type I IFN-related genes were studied in imiquimod-treated-PBMCs carrying 4  
129 different variants (p.(Val219Ile), p.(Ser301Pro), p.(Ala1032Thr), p.(His630Tyr)) and  
130 the authors found a significant decrease of IRF7 and IFN- $\gamma$  mRNA levels compared  
131 with healthy controls [Fallerini, preprint medRxiv 2020].

132 Here we describe two index patients with rare, putatively deleterious germline variants  
133 in the X-chromosomal *TLR7* gene. This finding reinforces the notion that TLR7 plays a  
134 critical role in the recognition of SARS-CoV-2 and the initiation of an early immune  
135 response to clear the virus and prevent the development of severe COVID-19. Our  
136 findings furthermore support the idea that, in some male patients, severe COVID-19  
137 could be determined by rare *TLR7* variants and genetic screening may be appropriate in  
138 young, severely affected men without comorbidities predisposing to severe disease.

139

## 140 METHODS AND RESULTS

141 This is a joint study performed at the Hospital Universitari de Bellvitge – IDIBELL,  
142 L'Hospitalet de Llobregat, Barcelona, Spain; and the Radboud University Medical  
143 Center, Nijmegen, The Netherlands and the Erasmus Medical Center, Rotterdam, The  
144 Netherlands.

### 145 *The Barcelona cases*

146 From March to July 2020, researchers from Hospital Universitari de Bellvitge -  
147 IDIBELL prospectively collected biological samples from young patients without  
148 comorbidities related with severe COVID-19. Selection criteria were: 1) patients aged  
149 between 18 and 50 years old; 2) absence of known comorbidities associated with most

150 severe forms of COVID-19; and 3) SARS-CoV-2 related lung injury requiring high  
151 flow oxygen devices or mechanical ventilation. Ten male patients fulfilled all selection  
152 criteria (Table 1). Eight patients (patients 1-8) were evaluated also by the COVID  
153 Human Genetic Effort where no pathogenic variants were detected in any of the 13 type  
154 I IFN pathway genes studied [12], none of those eight Barcelona patients carried a rare  
155 *TLR7* variant.

156 Informed consent was obtained from all patients and relatives, and the IDIBELL  
157 Research Ethics Committee approved this study (PR152/20). Demographic,  
158 epidemiological, laboratory and clinical data were collected. Treatments specifically  
159 used to treat COVID-19 at any time during admission were also documented.

160 DNA was isolated from total blood either using a Maxwell instrument RSC (Promega,  
161 Madison, WI, USA) or QIAGEN Flexigene DNA kit (Qiagen, Germany). Nine PCR  
162 primer pairs (Sigma-Aldrich, MO, USA) were designed to cover the whole coding  
163 region of *TLR7* gene. PCR was performed using DreamTaq MasterMix (ThermoFisher  
164 Scientific, Waltham, MA, USA), products were purified using EXO-SAP (New  
165 England Biolabs) and sequenced using the BigDye Terminator v.3.1 Sequencing Kit  
166 (Applied Biosystems, CA, USA) in an ABI Prism 3730 XL Genetic Analyzer (Applied  
167 Biosystems CA, USA). Primers and PCR conditions were available upon request.  
168 Mutation Surveyor software was used to detect variants and nomenclature was given  
169 according to HGVS guidelines. All variants identified were submitted to Alamut  
170 Software Suite v2.15.0 (Interactive Biosoftware) to retrieve population frequency and *in*  
171 *silico* prediction data.

#### 172 *The Dutch cases*

173 At the Radboud University Medical Center in Nijmegen and the Erasmus Medical  
174 Center in Rotterdam, the Netherlands, patients were screened prospectively in a clinical  
175 setting prospectively from December 2020 to February 2021 with the following criteria:  
176 1) males aged below 40 years of age; 2) absence of comorbidities known to be  
177 associated with severe COVID-19 and 3) PCR-confirmed SARS-CoV-2 infection  
178 requiring high-flow oxygen therapy or ICU admission. A total of 3 patients (patients 11-  
179 13) fulfilled these inclusion criteria and underwent clinical Sanger sequencing (patient  
180 11 and 12) or rapid whole-exome sequencing (patient 13) to specifically assess genetic  
181 variants in *TLR7*. Written informed consent was also obtained from patient 13 whose  
182 clinical data has been included in this study. Rapid whole-exome sequencing was  
183 performed similar to previous reports [13]. Sanger sequencing was done according to  
184 standard diagnostic procedures at the Department of Human Genetics, Radboud  
185 University Medical Center, protocols and primers sequences are available upon request.

#### 186 ***TLR7* Sequencing Results**

187 A total of 13 patients were included, with an average age of 37.85 (SD 9.026) years old.  
188 Putative deleterious *TLR7* variants were identified in two patients (patient 10 and 13).  
189 Both variants, which included a *TLR7* c.644A>G, p.(Asn215Ser) missense variant in  
190 patient 10 and a c.2797T>C p.(Trp933Arg) missense variant in patient 13, were not  
191 previously reported in our in-house database nor in the population database gnomAD  
192 [14]. Moreover, the Asn215Ser variant affects a highly conserved nucleotide and amino  
193 acid in the *TLR7* leucine-rich region domain and it is predicted damaging or possibly  
194 damaging by *in silico* software. The Trp933Arg variant is also located at an  
195 evolutionarily highly conserved position within the TIR domain, important for  
196 downstream signaling via adapter proteins, and is considered deleterious by the *in silico*

197 effect predictors. These variants and other previously reported variants in COVID-19  
198 patients are shown schematically in Figure 1.

### 199 ***TLR7* patients' characteristics**

200 Patient 10 was of Latin origin man in his 30s with no general risk factors predisposing  
201 to severe COVID-19. He developed pneumonia with bilateral consolidations on a  
202 computed tomography (CT) scan and fulfilled the criteria of acute respiratory distress  
203 syndrome (ARDS) secondary to PCR-proven COVID-19 (Table 2). The patient  
204 received antiviral treatment with remdesivir and immunosuppressive therapy with  
205 dexamethasone. Due to respiratory insufficiency, the patient was intubated and admitted  
206 at the ICU. The patient could be successfully extubated after 4 days of mechanical  
207 ventilation support and was discharged from ICU after 6 days. After the identification  
208 of the *TLR7* c.644A>G variant in the patient, segregation analysis confirmed  
209 segregation in both 2 first-degree relatives. . The younger relative (<30 years) was  
210 previously healthy without any comorbidity but, similarly to the index case, also  
211 contracted severe COVID-19, requiring mechanical ventilation and ICU admission at  
212 another hospital (Table 2). The brother pair of this family therefore represents the third  
213 pair of brothers with severe COVID-19, following the initial report [13]. Their older  
214 than 60 years relative suffered from obesity, dyslipidemia, type 2 diabetes and  
215 hypertension, and was also admitted at ICU due to critical respiratory failure caused by  
216 COVID-19. She was discharged from the ICU 16 days after admission. Main  
217 demographic, clinical, laboratory, and radiological findings of the three relatives are  
218 summarized in Table 2.

219 Patient 13 was a Caucasian male in his 20s without previous medical history or  
220 comorbidities. The patient complained of progressive dyspnea and shortness of breath  
221 and due to rapid clinical deterioration and respiratory insufficiency, he was intubated by  
222 the medical emergency team at his home and subsequently hospitalized in ICU at a  
223 peripheral hospital. A CT-scan showed multiple diffuse ground-glass opacities and  
224 consolidations in all lung segments, meeting the criteria for ARDS. Treatment consisted  
225 of mechanical ventilation with prone positioning, intravenous dexamethasone, and the  
226 antibiotics ceftriaxone and ciprofloxacin. However, the patient's condition further  
227 deteriorated and he was referred to the Erasmus Medical Center for possible ECMO  
228 treatment. However, with continuing prone positioning he gradually improved before  
229 ECMO was required. A repeated CT scan also showed subsegmental pulmonary  
230 embolisms for which intravenous heparin was started. In the following weeks, the  
231 patient gradually recovered and to date remains in the ICU after a total of 26 days. He  
232 has started physical therapy and is weaning of the ventilator.

233 The patients' whole family contracted COVID-19 at the time the patient developed  
234 symptoms, including his brother, who had only minor symptoms. Variant segregation  
235 analysis is still pending.

236

### 237 **DISCUSSION**

238 In July 2020, rare, deleterious, germline variants in the X-chromosomal *TLR7* gene  
239 were reported in young and, otherwise, healthy males with severe COVID-19. In these  
240 two brother pairs, rapid whole-exome sequencing identified both a maternally inherited  
241 4-nucleotide deletion (c.2129\_2132del; p.(Gln710Argfs\*18)) and a missense variant  
242 (c.2383G>T; p.(Val795Phe)). Both variants were associated with impaired type I and II  
243 IFN responses, showing its importance in the COVID-19 pathogenesis [13].

244 Since *TLR7* was not one of the genes initially evaluated by the COVID Human Genetic  
245 Effort, our Barcelona team decided to perform a *TLR7* Sanger sequencing analysis in  
246 their case series consisting of 10 healthy young males with severe COVID-19. We  
247 identified one patient with a new missense variant (c.644A>G; p.(Asn215Ser)) labelled  
248 as damaging by *in silico* predictors. In addition, three Dutch cases were added to this  
249 series who underwent genetic screening in a clinical setting, leading to the identification  
250 of another novel, unique missense variant (c.2797T>C; p.(Trp933Arg)) located in the  
251 highly conserved TIR domain. While we cannot unequivocally prove the pathogenicity  
252 of the variants identified, the odds of identifying two private missense variants in just 13  
253 cases is very unlikely a chance finding, considering the extremely rare prevalence of  
254 *TLR7* variants in gnomAD.

255 The finding of these two variants in a total of 13 screened patients (15.4%) led us to  
256 consider that *TLR7* variants could be a relatively common cause predisposing to severe  
257 COVID-19 in this subset of young, male patients with absence of general risk factors  
258 for severe disease. However, it should be noted that complete *TLR7* deficiency is  
259 estimated to be extremely rare. Endosomal TLRs (TLR3, TLR7, TLR8, and TLR9)  
260 have evolved under strong purifying selection. This selective regime ensures the  
261 conservation of particularly important proteins and indicates that these receptors play an  
262 essential, non-redundant biological role in host survival [15-16]. Therefore, rare *TLR7*  
263 non-synonymous variants are unlikely to be an explanation for severe COVID-19 in the  
264 general population. It is intriguing to speculate that some, very rare variants  
265 compromising essential functional domains in TLR7 lead to a complete deficiency [13],  
266 while other, relatively less rare variants may lead only to a partial TLR7 deficiency, and  
267 therefore may impact a larger group of individuals, but exert a lower relative risk to  
268 develop severe COVID-19. It is therefore interesting, that these latter variants have been  
269 also be identified in individuals of elevated age and also compromise TLR7 function  
270 [Fallerini, preprint MedRxiv 2020].

271 Common low effect size genetic variants in *TLR7* have been proposed as a possible  
272 explanation of the male sex bias in COVID-19 severity because of its localization on the  
273 X chromosome and well-established function in innate immunity [17]. Interestingly,  
274 circulating 25-hydroxy vitamin D (25OHD) levels decline with age [18] and may be  
275 accompanied by a lower expression and defective function of TLR7 [19]. Accordingly,  
276 TLR7 function could be modified by genetic but also epidemiological factors and  
277 certain comorbidities. So it is possible, but only speculative, that the addition of several  
278 factors that modify TLR7 function may be a common cause of progression to the most  
279 severe stages of COVID-19 in male. The same speculative hypothesis could be  
280 applicable to other genes involved in immune response regulation after SARS-CoV-2  
281 infection [4,20].

282 Specific genetic variants that confer a higher risk to biological agents such as HIV,  
283 malaria and tuberculosis have been identified through NGS and genome wide  
284 association studies (GWAS) [21]. These host DNA variants now serve as biomarkers  
285 that can be used for early diagnosis and prophylaxis, and allow the identification of  
286 possible molecular targets for treatment. This also applies to susceptibility to SARS-  
287 CoV-2 that could be determined by genes related to viral binding and entry, as well as  
288 genes related with immune response to the SARS-CoV-2 [4]. The small cohort study  
289 presented here, with an unexpectedly high yield (2/13) encourages that a screen for  
290 *TLR7* rare variants in severely affected men may be useful. While also elderly  
291 individuals may carry rare *TLR7* variants those individuals may be more difficult to  
292 identify; we therefore suggest the following preliminary screening criteria: young men

293 (<50 year of age); previously healthy; suffering from severe COVID-19 in addition  
294 affected young brother pairs – as well as pedigrees suggestive for X-linked segregation -  
295 should be further prioritized.

296 Unfortunately, there is still a paucity of therapies that has been proven effective and safe  
297 in the treatment of COVID-19, other than supportive care and dexamethasone [22].  
298 Moreover, even less is known about how patients with pathogenic variants in type I IFN  
299 pathway genes should be treated. Studying the pathways critically involved in the  
300 pathogenesis of severe COVID-19 could lead to novel preventative and therapeutic  
301 options to treat such patients and also their at-risk male relatives. In this respect, there  
302 would be a strong argument to offer hemizygous *TLR7* deficient males that have not had  
303 COVID-19 direct access to vaccination as effective preventative measure, similar to  
304 other patients with primary immunodeficiencies.

305 In summary, host genetics should be evaluated in young and apparently healthy  
306 individuals with life-threatening COVID-19. We describe two new germline putative  
307 deleterious variants in the X chromosomal *TLR7* gene. To know host DNA variants  
308 related with SARS-CoV-2 susceptibility may help physicians to identify and treat those  
309 patients at higher risk to develop severe COVID-19. In this way, their relatives at risk  
310 could be offered options for pre-symptomatic tests in order to early establish preventive  
311 measures. Further studies are needed to determine the pathogenicity of the variants  
312 reported here, as well as the prevalence of pathogenic variants in *TLR7* in larger cohorts  
313 of young, healthy male patients severely affected by SARS-CoV-2. Finally, the  
314 contribution of genetic variation in *TLR7* in the population of older healthy male  
315 patients should also be assessed.



316 **Data availability statement**

317 The raw data supporting the conclusions of this article will be made available by the  
318 authors, without undue reservation.

319

320 **Ethics statement**

321 Ethical approval for the study was obtained from the Hospital Universitari de Bellvitge  
322 – IDIBELL (L'Hospitalet de Llobregat, Barcelona, Spain) Research Ethics Committee  
323 (approval number PR152/20). The patients/participants provided their written informed  
324 consent to participate in this study. Patients from the Netherlands gave consent for  
325 diagnostic testing of *TLR7* and/or whole exome sequencing, patient 13 gave written  
326 consent for publication of his clinical data.

327

328 **Author contributions**

329 XS, GVP and CvdM contributed equally to this work. XS, AH and CL devised the  
330 study. GC, CvdM, ARM, FS, ME and XC provided input on the study design. AA,  
331 BvdH, JSH, FvdV and GRB assisted in patient management. GVP, AS and JdV  
332 designed and performed the sequence analysis. XS, GVP, CvdM, AH and CL had full  
333 access to all data and take responsibility for the integrity and the accuracy of the data.  
334 XS, GVP, CvdM, AH and CL drafted the manuscript. All authors revised and approved  
335 the final manuscript.

336

337 **Conflicts of Interest:**

338 All authors declare no competing interests.

339

340 **Acknowledgments:**

341 We sincerely thank the patients and their families for their participation. With the  
342 support of the Departament de Salut de la Generalitat de Catalunya. We thank CERCA  
343 Programme / Generalitat de Catalunya for institutional support. We also thank the  
344 Radboud Genomics Technology Center for their technical support.

345

346 **Funding:**

347 Contract grant sponsor: Supported by the Carlos III National Health Institute funded by  
348 FEDER funds – a way to build Europe – [PI19/00553 and CIBERONC]; and the  
349 Government of Catalonia [2017SGR1282 and 2017SGR496]. AH is supported by the  
350 Solve-RD project. The Solve-RD project has received funding from the European  
351 Union's Horizon 2020 research and innovation programme under grant agreement No.  
352 779257. FvdV was supported by a ZonMW (The Netherlands Organization for Health  
353 Research and Development) Vidi grant (No. 91718351). This research was part of the  
354 Netherlands X-omics Initiative and partially funded by NWO (The Netherlands  
355 Organization for Scientific Research; project 184.034.019).

356 **REFERENCES**

- 357 1- Siddiqi HK, Mehra MR. COVID-19 illness in native and immunosuppressed states:  
358 A clinical-therapeutic staging proposal. *J Heart Lung Transplant.* 2020  
359 May;39(5):405-407. doi: 10.1016/j.healun.2020.03.012. Epub 2020 Mar 20. PMID:  
360 32362390; PMCID: PMC7118652.
- 361 2- Del Sole F, Farcomeni A, Loffredo L, Carnevale R, Menichelli D, Vicario T, et al.  
362 Features of severe COVID-19: A systematic review and meta-analysis. *Eur J Clin*  
363 *Invest.* 2020 Oct;50(10):e13378. doi: 10.1111/eci.13378. Epub 2020 Aug 29. PMID:  
364 32860457; PMCID: PMC7435565.
- 365 3- Rubio-Rivas M, Corbella X, Mora-Luján JM, Loureiro-Amigo J, López Sampalo A,  
366 Yera Bergua C, et al. Predicting Clinical Outcome with Phenotypic Clusters in  
367 COVID-19 Pneumonia: An Analysis of 12,066 Hospitalized Patients from the  
368 Spanish Registry SEMI-COVID-19. *J Clin Med.* 2020 Oct 29;9(11):E3488. doi:  
369 10.3390/jcm9113488. PMID: 33137919.
- 370 4- Anastassopoulou C, Gkizarioti Z, Patrinos GP, Tsakris A. Human genetic factors  
371 associated with susceptibility to SARS-CoV-2 infection and COVID-19 disease  
372 severity. *Hum Genomics.* 2020 Oct 22;14(1):40. doi: 10.1186/s40246-020-00290-4.  
373 PMID: 33092637; PMCID: PMC7578581.
- 374 5- Ellinghaus D, Degenhardt F, Bujanda L, Buti M, Albillos A, Invernizzi P, et al.  
375 Genomewide Association Study of Severe Covid-19 with Respiratory Failure. *N*  
376 *Engl J Med.* 2020 Oct 15;383(16):1522-1534. doi: 10.1056/NEJMoa2020283. Epub  
377 2020 Jun 17. PMID: 32558485; PMCID: PMC7315890.
- 378 6- Zhao J, Yang Y, Huang H, Li D, Gu D, Lu X, et al. Relationship between the ABO  
379 Blood Group and the COVID-19 Susceptibility. *Clin Infect Dis.* 2020 Aug  
380 4:ciaa1150. doi: 10.1093/cid/ciaa1150. Epub ahead of print. PMID: 32750119;  
381 PMCID: PMC7454371.
- 382 7- Wu Y, Feng Z, Li P, Yu Q. Relationship between ABO blood group distribution and  
383 clinical characteristics in patients with COVID-19. *Clin Chim Acta.* 2020  
384 Oct;509:220-223. doi: 10.1016/j.cca.2020.06.026. Epub 2020 Jun 17. PMID:  
385 32562665.
- 386 8- Hou Y, Zhao J, Martin W, Kallianpur A, Chung MK, Jehi L, et al. New insights into  
387 genetic susceptibility of COVID-19: an ACE2 and TMPRSS2 polymorphism  
388 analysis. *BMC Med.* 2020 Jul 15;18(1):216. doi: 10.1186/s12916-020-01673-z.  
389 PMID: 32664879; PMCID: PMC7360473.
- 390 9- Nguyen A, David JK, Maden SK, Wood MA, Weeder BR, Nellore A, et al. Human  
391 Leukocyte Antigen Susceptibility Map for Severe Acute Respiratory Syndrome  
392 Coronavirus 2. *J Virol.* 2020 Jun 16;94(13):e00510-20. doi: 10.1128/JVI.00510-20.  
393 PMID: 32303592; PMCID: PMC7307149.
- 394 10- Kuo CL, Pilling LC, Atkins JL, Masoli JAH, Delgado J, Kuchel GA, et al. APOE e4  
395 Genotype Predicts Severe COVID-19 in the UK Biobank Community Cohort. *J*  
396 *Gerontol A Biol Sci Med Sci.* 2020 Oct 15;75(11):2231-2232. doi:  
397 10.1093/gerona/glaa131. PMID: 32451547; PMCID: PMC7314139.
- 398 11-Thevarajan I, Nguyen THO, Koutsakos M, Druce J, Caly L, van de Sandt CE, et al.  
399 Breadth of concomitant immune responses prior to patient recovery: a case report of

- 400 non-severe COVID-19. *Nat Med.* 2020 Apr;26(4):453-455. doi: 10.1038/s41591-  
401 020-0819-2. PMID: 32284614; PMCID: PMC7095036.
- 402 12-Zhang Q, Bastard P, Liu Z, Le Pen J, Moncada-Velez M, Chen J, et al. Inborn errors  
403 of type I IFN immunity in patients with life-threatening COVID-19. *Science.* 2020  
404 Oct 23;370(6515):eabd4570. doi: 10.1126/science.abd4570. Epub 2020 Sep 24.  
405 PMID: 32972995.
- 406 13-van der Made CI, Simons A, Schuurs-Hoeijmakers J, van den Heuvel G, Mantere T,  
407 Kersten S, et al. Presence of Genetic Variants Among Young Men With Severe  
408 COVID-19. *JAMA.* 2020 Jul 24;324(7):1–11. doi: 10.1001/jama.2020.13719. Epub  
409 ahead of print. PMID: 32706371; PMCID: PMC7382021.
- 410 14-Karczewski KJ, Francioli LC, Tiao G, Cummings BB, Alföldi J, Wang Q, et al. The  
411 mutational constraint spectrum quantified from variation in 141,456 humans. *Nature.*  
412 2020 May;581(7809):434-443. doi: 10.1038/s41586-020-2308-7. Epub 2020 May  
413 27. Erratum in: *Nature.* 2021 Feb;590(7846):E53. PMID: 32461654; PMCID:  
414 PMC7334197.
- 415 15-Casanova JL, Abel L, Quintana-Murci L. Human TLRs and IL-1Rs in host defense:  
416 natural insights from evolutionary, epidemiological, and clinical genetics. *Annu Rev*  
417 *Immunol.* 2011;29:447-91. doi: 10.1146/annurev-immunol-030409-101335. PMID:  
418 21219179.
- 419 16-Plenge RM. Molecular Underpinnings of Severe Coronavirus Disease 2019. *JAMA.*  
420 2020 Jul 24. doi: 10.1001/jama.2020.14015. Epub ahead of print. PMID: 32706364.
- 421 17-Scully EP, Haverfield J, Ursin RL, Tannenbaum C, Klein SL. Considering how  
422 biological sex impacts immune responses and COVID-19 outcomes. *Nat Rev*  
423 *Immunol.* 2020 Jul;20(7):442-447. doi: 10.1038/s41577-020-0348-8. Epub 2020 Jun  
424 11. PMID: 32528136; PMCID: PMC7288618.
- 425 18-Pérez-López FR, Chedraui P, Fernández-Alonso AM. Vitamin D and aging: beyond  
426 calcium and bone metabolism. *Maturitas.* 2011 May;69(1):27-36. doi:  
427 10.1016/j.maturitas.2011.02.014. Epub 2011 Mar 22. PMID: 21429678.
- 428 19-Alvarez-Rodriguez L, Lopez-Hoyos M, Garcia-Unzueta M, Amado JA, Cacho PM,  
429 Martinez-Taboada VM. Age and low levels of circulating vitamin D are associated  
430 with impaired innate immune function. *J Leukoc Biol.* 2012 May;91(5):829-38. doi:  
431 10.1189/jlb.1011523. Epub 2012 Feb 17. PMID: 22345707.
- 432 20-Breidenbach JD, Dube P, Ghosh S, Abdullah BN, Modyanov NN, Malhotra D, et al.  
433 Impact of Comorbidities on SARS-CoV-2 Viral Entry-Related Genes. *J Pers Med.*  
434 2020 Sep 25;10(4):E146. doi: 10.3390/jpm10040146. PMID: 32992731.
- 435 21-Mboowa G, Sserwadda I, Amujal M, Namatovu N. Human Genomic Loci Important  
436 in Common Infectious Diseases: Role of High-Throughput Sequencing and Genome-  
437 Wide Association Studies. *Can J Infect Dis Med Microbiol.* 2018 Mar  
438 20;2018:1875217. doi: 10.1155/2018/1875217. PMID: 29755620; PMCID:  
439 PMC5884297.
- 440 22-RECOVERY Collaborative Group, Horby P, Lim WS, Emberson JR, Mafham M, et  
441 al. Dexamethasone in Hospitalized Patients with Covid-19 - Preliminary Report. *N*  
442 *Engl J Med.* 2020 Jul 17;NEJMoa2021436. doi: 10.1056/NEJMoa2021436. Epub  
443 ahead of print. PMID: 32678530; PMCID: PMC7383595.

444 **Table 1. Demographic and Clinical Findings of Investigated Patients**  
445

Patient	Gender	Age	Ethnicity	Comorbidities	ARDS <sup>b</sup>	ICU	ECMO
1	M	30s	Caucasian	no	yes	no	no
2	M	40s	Caucasian	no	yes	yes	no
3	M	40s	Latin	no	yes	yes	yes
4	M	40s	Caucasian	no	yes	yes	no
5	M	50s	Latin	no	yes	yes	no
6	M	40s	Caucasian	no	yes	yes	no
7	M	40s	Latin	no	yes	yes	no
8	M	30s	Latin	no	yes	yes	no
9	M	40s	Latin	no	yes	no	no
10	M	30s	Latin	no	yes	yes	no
11	M	20s	Caucasian	no	yes	yes	no
12	M	30s	Caucasian	Overweight (BMI 28) <sup>a</sup>	yes	yes	no
13	M	20s	Caucasian	no	yes	yes	no

446  
447 Abbreviations: ARDS, acute respiratory distress syndrome; ECMO, extracorporeal membrane  
448 oxygenation; ICU, intensive care unit; F, female; M, male; Y, years.  
449

450 <sup>a</sup>Overweight was defined as a Body Mass Index greater than or equal to 25

451 <sup>b</sup>ARDS Definition Task Force. Acute Respiratory Distress Syndrome - The Berlin Definition. JAMA.  
452 2012;307(23):2526-2533. doi:10.1001/jama.2012.5669.

453 **Table 2. Demographic, clinical, laboratory, and radiological findings of investigated patients**  
454

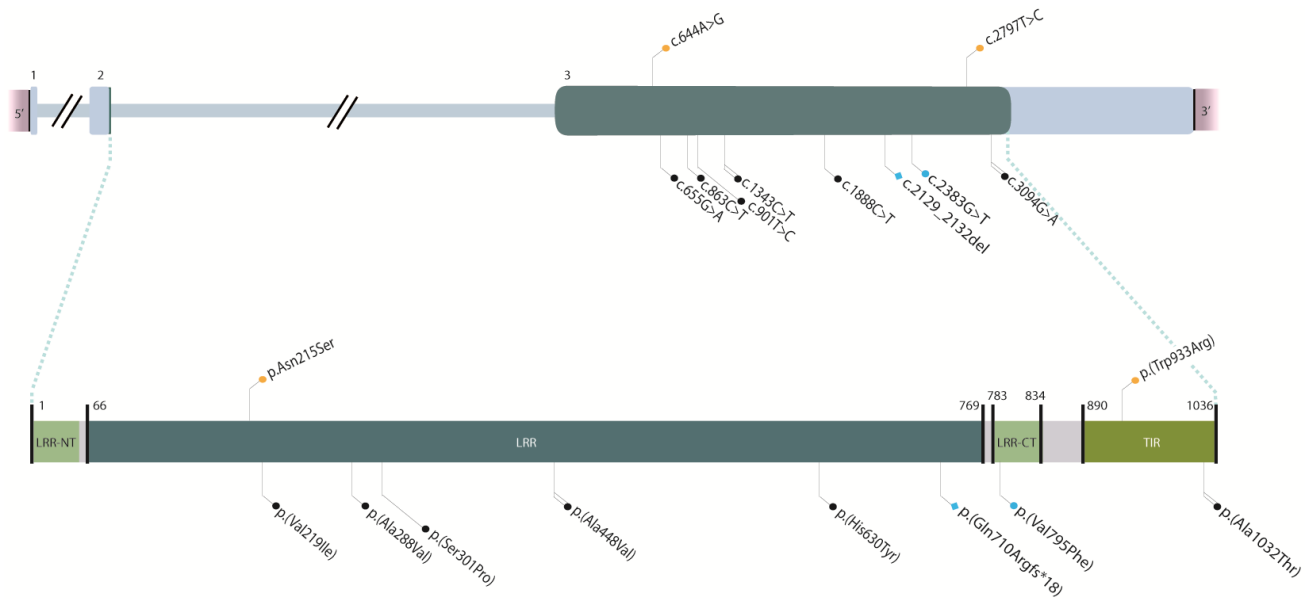
	Patient 10	Patient 10 – First-degree relative	Patient 10 – First-degree relative	Patient 13	Reference ranges
<b>Demographic characteristics</b>					
Age, decade	30s	20s	60s	20s	
Sex	Male	Male	Female	Male	
Medical history	None	None	Obesity, dyslipidemia, hypertension, type 2 diabetes,	Vasovagal syncope	
<b>Clinical characteristics at presentation</b>					
Time from symptom onset to hospitalization, d	7	6	12	2	
Symptoms at disease onset	Dyspnea, cough, fever, myalgia	Dyspnea, cough, fever, headache	Dyspnea, cough, fever, myalgia	Dyspnea, cough, fever, respiratory arrest	
Imaging features (CT scan)	Bilateral pulmonary consolidations	Bilateral pulmonary consolidations	Bilateral pulmonary consolidations	Multiple ground glass opacities and consolidations in all lung segments	
<b>ICU admission</b>					
Time from symptom onset to ICU admission, d	8	7	12	7	
Medical reason for ICU admission	Respiratory insufficiency	Respiratory insufficiency	Respiratory insufficiency	Respiratory failure, respiratory arrest, resuscitation at home.	
Disease severity status on admission, SOFA score <sup>a</sup>	3	3	4	6	
<b>Laboratory findings at ICU admission</b>					
<b>Chemistry</b>					
Alanine aminotransferase, U/L	135	14	23.5	41	<40
Albumin, g/L	37	31	28.1	23	35 - 52
Alkaline phosphatase, U/L	131	66	84.0	222	≤ 129
Aspartate aminotransferase, U/L	92	22	73.8	37	≤ 39
Cardiac troponin, high sensitivity, ng/L	NA	7	NA	NA	≤ 13
Creatine kinase, U/L	51	35	180	NA	≤ 189
Creatinine, μmol/L	60	57	57.1	84	44-97
eGFR, mL/min/1.73 m <sup>2</sup>	>90	>90	>90	>90	>90
γ-Glutamyltransferase, U/L	243	27	34.8	263	≤ 70
Lactate dehydrogenase, U/L	381	432	1088.4	201	<250
<b>Blood count</b>					
Hemoglobin, g/L	112	114	110	121	130 - 165
Lymphocyte count, ×10 <sup>9</sup> /L	1.8	1.47	2.19	1.64	1.3-3.4
White blood cell count, ×10 <sup>9</sup> /L	18	10.7	14.74	8.4	3.9-9.5
Platelet count, ×10 <sup>9</sup> /L	385	408	416	369	149 - 303
<b>Coagulation</b>					
Activated partial thromboplastin time ratio	0.95	0.98	1.00	37	0.8-1.2
D-dimer, ng/mL	<250	463	2400	3660	<250
Fibrinogen, g/L	> 7	> 7	5.5	4.2	2.76-4.71
Prothrombin time ratio	1.38	1.32	1.10	NA	0.8-1.2
<b>Inflammatory markers</b>					
C-reactive protein, mg/L	346.6	267	203.98	196	<3

Ferritin, µg/L	1957.6	920	384.9	845	30 - 400
Procalcitonin, µg/L	0.28	NA	0.1	4.31	<0.5
IL-6, ng/L	48.4	1.5	24	NA	≤ 6.9
Secondary complications	None reported	catheter-related bloodstream infection	None reported	Small ventral pneumothorax at admission after resuscitation at home. Bilateral subsegmental pulmonary embolisms.	
Duration of viral shedding after COVID-19 onset (positive SARS-CoV-2 PCR), d	Positive at admission, no follow-up measurement	Positive at admission, no follow-up measurement	Positive at admission, no follow-up measurement	Positive before admission, PCR negative at day 29	
Duration of ventilatory support, d	4	10	7	24 days (ongoing)	
Duration of ICU stay, d	6	12	16	24 days (ongoing)	
<b>Follow-up</b>					
Time from ICU discharge to hospital discharge, d	3	11	5	NA	
Complications during follow-up period	None reported	None reported	None reported	NA	
Treatments	R, D	H, L/R, MP, I, T	R, D, T	D	

455

456 Abbreviations: COVID-19, coronavirus disease 2019; CT, computed tomography; ICU, intensive care unit; eGFR,  
 457 estimated glomerular filtration rate; NA, not assessed; PCR, polymerase chain reaction; SARS-CoV-2; severe acute  
 458 respiratory syndrome coronavirus 2; SOFA, Sequential Organ Failure Assessment. The treatments were administered to  
 459 the 3 patients as follows: D, Dexamethasone 6 mg / day intravenously for 10 days; R, Remdesivir 200mg orally the first  
 460 day and 100mg every day the next 4 days; T, Tocilizumab 600 mg single dose intravenously; L/R, Lopinavir  
 461 400mg/Ritonavir 100mg orally every 12 hours for 3d; H, Hydroxychloroquine orally 400mg every 12 hours the first  
 462 day and 200mg every 12 hours the next 10 days; I, Interferon β1b 0.25mg every 48 hours subcutaneously for 3 days.  
 463

464 <sup>a</sup> The SOFA score is calculated using 6 systems: respiratory, coagulation, hepatic, cardiovascular, central nervous, and  
 465 kidney. Scores range from 0 for normal function to 4 for most abnormal and are summed for a final range of 0 to 24. An  
 466 initial score of 2 to 3 is associated with 6 % mortality; an initial score of 4 to 5 is associated with 20 % mortality.



467  
468  
469  
470  
471  
472  
473

**Figure 1.** Schematic representation of *TLR7* variants reported to date in severely affected COVID-19 cases. Variants in cDNA (top) and protein (bottom). Color code: orange, variants found in the present series; blue, previously reported in van der Made, 2020; black, previously reported in Fallerini, 2020. Shape code: circle, missense variants; square, frameshift variants. Line code: single, reported in one case; double, reported in 2 cases.