

Supplementary Materials contents

Supplemental Tables

Table S1 page 2

The following supplemental tables are uploaded separately as Excel files.

Table S2. Initial screen of OICR kinase inhibitor library against PKN1.

Table S3. Secondary screen, dose-titrations of inhibitors against PKN1.

Table S4. Extract from Table S3 showing the inhibitors selected for further testing.

Figures S1-S3 with legends page 3-5

TABLE S1

Patient ID	Age Range	Sex	Vital Status	Rai Stage	CD38+ (%)	FISH				TRAF1	TRAF1 Reduction	
						del(17p)	del(13q)	del(11q)	Trisomy 12	dMFI	OTSSP167	XL-228
0154	60-69	M	alive	IV	N/A	-	+	+	-	N/D	N/D	N/D
0155	70-79	F	deceased	II	79	-	+	-	-	1214	equivocal	N/D
0440	50-59	M	alive	IV	0	-	-	-	-	949	Y	Y
0883	40-49	F	deceased	IV	32	-	+	-	+	937	Y	N/D
5280	40-49	M	deceased	IV	1	N/A	N/A	N/A	N/A	1261	Y	N/D
6130	60-69	M	lost follow-up	N/A	0	N/A	+	-	-	2997	Y	Y
6277	50-59	M	lost follow-up	II	0	N/A	N/A	N/A	N/A	2148	Y	N/D
8179	60-69	M	alive	I	0	N/A	N/A	N/A	N/A	1163	Y	N/D
8606	60-69	F	deceased	0	0	-	+	-	-	285	N	N/D
080169	50-59	M	alive	II	0	N/A	N/A	N/A	N/A	1331	Y	Y
080298	30-39	M	alive	II	0	-	-	-	-	1843	Y	Y
080299	60-69	M	lost follow-up	IV	0	-	+	-	-	1264	Y	Y
110250	40-49	M	lost follow-up	N/A	N/A	N/A	N/A	N/A	N/A	1806	Y	N/D
130705	60-69	M	deceased	IV	N/A	-	-	-	-	3018	Y	N/D
140490	70-79	M	deceased	IV	43	-	+	-	-	N/D	N/D	N/D
140515	40-49	M	alive	IV	0	-	-	-	-	1097	Y	Y
140728	60-69	M	deceased	III	0	-	+	-	-	874	Y	Y
140729	50-59	F	alive	IV	0	-	+	-	-	N/D	N/D	N/D
140790	60-69	F	alive	N/A	0	-	+	-	+	2751	Y	N/D
140984	70-79	F	deceased	IV	1	N/A	N/A	N/A	N/A	N/D	N/D	N/D
150639	50-59	M	alive	I	60	-	-	-	-	1379	Y	Y
151586	80-89	F	alive	IV	0	-	+	-	-	N/D	N/D	N/D
160046	70-79	F	alive	III	46	-	-	-	-	688	N	N
160421	40-49	M	alive	IV	0	N/A	N/A	N/A	N/A	N/A	N/A	N/A
161314	60-69	F	alive	IV	0	-	+	-	-	1517	Y	Y

Supplementary Table 1. Patient characteristics. F: Female, M: Male, Y: Yes, N: No, N/A: Not available. N/D not determined.

Supplemental Figures

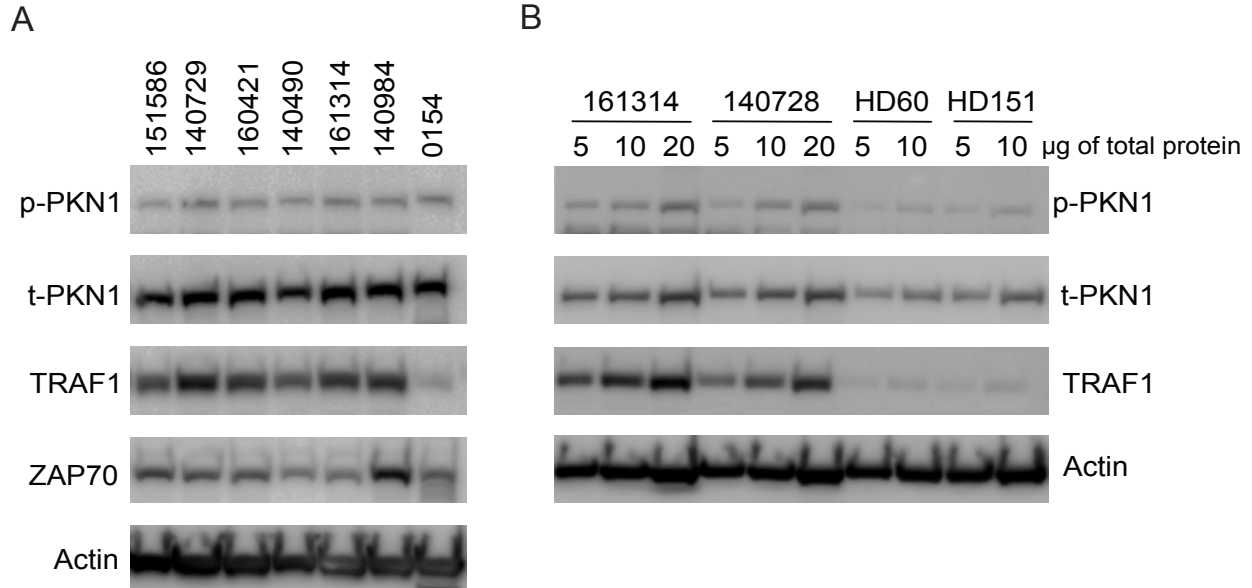


Figure S1. Phospho-PKN1 and TRAF1 are overexpressed in CLL compared to healthy donors.

(A) 20 µg of whole cell lysates from CLL donor PBMCs were subjected to western blot analysis for Thr774 phospho-PKN1 (p-PKN1), total PKN1 (t-PKN1), TRAF1, ZAP70 or Actin. Each lane represents lysates obtained from individual donors, as labeled. (B) 5, 10 or 20 µg of whole cell lysates from CLL donor PBMCs and 5 or 10 µg of whole cell lysates from isolated B cells from healthy donor PBMC were subjected to western blot analysis for Thr774 phospho-PKN1 (p-PKN1), total PKN1 (t-PKN1), TRAF1 or Actin. Panel A and B show results from a total of 8 CLL patients and 2 healthy donors and are from independent experiments, with donor 161314 repeated in both experiments.

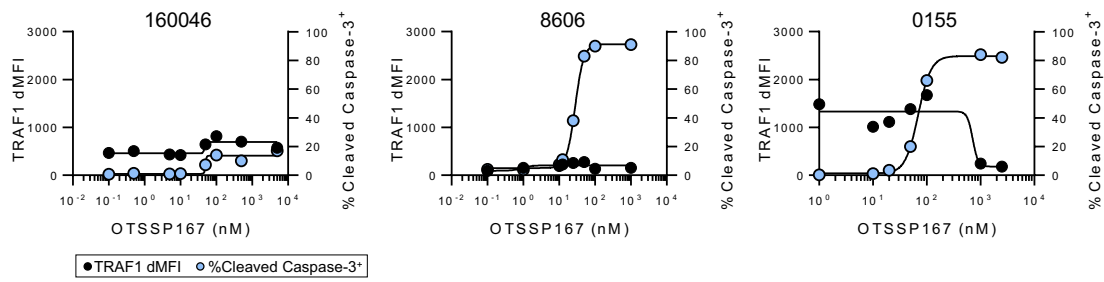


Figure S2. Response of 3 outliers in TRAF1 response to OTSSP167. Primary CLL cells were cultured on OP9 stromal cells and treated with OTSSP167 at the indicated concentrations for 24h. Each graph depicts the TRAF1 dMFI and %cleaved caspase-3⁺ CLL cells of one donor. 160046 and 8606 are considered non-responders to OTSSP167 with respect to TRAF1 reduction, 0155 is considered equivocal.

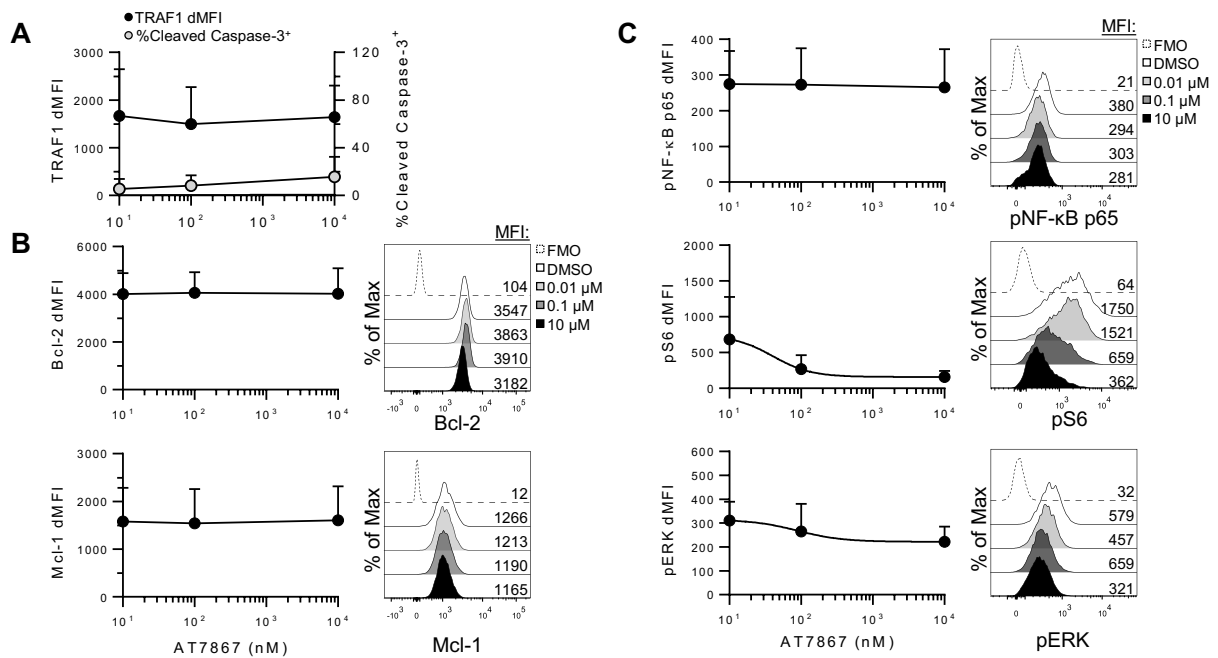


Figure S3. Effect of AT7867 on TRAF1, cell death, survival and signaling intermediates in primary CLL cells. Primary CLL cells were cultured on OP9 stromal cells and treated with AT7867 at the indicated concentrations for 24h. Flow cytometry was used to measure: (A) TRAF1 and caspase-3 activation, (B) Bcl-2 and Mcl-1 expression, and (C) pNF- κ B, pS6 and pERK levels. Line graphs show, for each parameter analyzed, the dMFI or %cleaved caspase-3⁺ cells as mean \pm SD, n=6 (2 independent experiments pooled). In each panel, representative histograms from one donor show the MFI of AT7867 treated CLL cells and untreated controls.