

1     **Distinct transcriptomic signature of mRNA and microRNA in**  
2     **ulcerative colitis and irritable bowel syndrome**

3           Hanqing Luo<sup>1,2</sup>, Jiacheng Dai<sup>3,4</sup>, Chunyu Liu<sup>3,5</sup>, Yue Lee<sup>1</sup>, Hong Lv<sup>1</sup>, Jiaming  
4     Qian<sup>1\*</sup>

5           <sup>1</sup>Department of Gastroenterology, Peking Union Medical College Hospital,  
6     Chinese Academy of Medical Science, Peking Union Medical College, Beijing, China

7           <sup>2</sup>Department of Health Care, Peking Union Medical College Hospital, Chinese  
8     Academy of Medical Science, Peking Union Medical College, Beijing, China

9           <sup>3</sup> Center for Medical Genetics & Hunan Key Laboratory of Medical Genetics,  
10     School of Life Sciences, Central South University, Changsha, Hunan, China

11          <sup>4</sup> State Key Laboratory of Genetic Engineering, Human Phenome Institute, and  
12     School of Life Sciences, Fudan University, Shanghai, China

13          <sup>5</sup> Department of Psychiatry, SUNY Upstate Medical University, Syracuse, NY,  
14     USA

15

16           **\*corresponding author**

17           **Email:** qianjiaming@126.com

18           **Address:** Department of Gastroenterology, Peking Union Medical College  
19     Hospital, ShuaiFuyuan No.1, Dongcheng District, Beijing, China, 100730

20

21

22

**NOTE: This preprint reports new research that has not been certified by peer review and should not be used to guide clinical practice.**

## 23 ABSTRACTS

24 **Background:** Ulcerative colitis (UC) and irritable bowel syndrome (IBS) are both  
25 chronic bowel diseases involving stress. To identify genes differentially expressed in  
26 UC and IBS, and to determine whether psychological stress can influence those gene  
27 expressions, we conducted this pilot study.

28 **Methods:** Patients of UC, irritable bowel syndrome (IBS) and normal controls (NC)  
29 (n=5 in each group) were recruited. Perceived stress scale (PSS) was adopted to assess  
30 psychological stress level. Sigmoid mucosa samples were collected during colonoscopy.  
31 Differentially expressed genes (DEGs) of both mRNA and microRNA (DEG-mRNA  
32 and DEG-miRNA) were identified by RNA-Seq and microarray, respectively. Weighted  
33 gene co-expression network analysis (WGCNA), gene ontology, and microRNA target  
34 analysis were performed to identify regulatory relationships and pathways involved.  
35 Pearson correlation was performed to identify the relationship between DEGs and PSS  
36 score.

37 **Results:** In total, 1,770 and 938 DEG-mRNAs, 107 and 3 DEG-miRNAs were  
38 identified in UC and IBS (nominal  $P < 0.05$ ), respectively. The transcriptome changes in  
39 UC and IBS were highly correlated but transcriptome severity was larger in UC. There  
40 were 268 overlapped DEG-mRNAs and 3 overlapped DEG-miRNAs between UC and  
41 IBS. Median PSS score was 27.5 (24.7, 40.0) in UC, 27.0 (17.5, 32.5) in IBS and 22.0  
42 (12.0, 28.5) in NC. Five of the UC's DEG-mRNAs were significantly correlated to PSS  
43 scores, including SLC4A7, PLCB1, SPATA33, DECR2, RP11-792A8.4. There were no  
44 DEGs correlate with PSS scores in IBS. One module enriched for immunological

45 pathways was upregulated in UC. Metabolic pathways were enriched in IBS. Within  
46 the UC-related co-expression module, we identified 18 DEG-mRNAs that were also  
47 targets of DEG-miRNA.

48 **Conclusions:** Integration of microRNA and mRNA expression profiles identified  
49 changes of gene expression in both UC and IBS. Although the two diseases have  
50 significant overlapped transcriptomic changes, they have distinct signature.  
51 Immunological pathways are involved prominently in UC while metabolic pathways in  
52 IBS. Psychological stress is uniquely associated with the transcriptome changes of UC.

53

#### 54 **Keywords**

55 ulcerative colitis; irritable bowel syndrome; stress; mRNAs; microRNAs

56

#### 57 **BACKGROUND**

58 Ulcerative colitis (UC) is a kind of inflammatory bowel disease (IBD). It is  
59 characterized by chronic mucosal inflammation, with symptoms such as diarrhea and  
60 rectal bleeding. Irritable bowel syndrome (IBS) is a kind of functional gastrointestinal  
61 disease with symptoms including abdominal pain, diarrhea or constipation. Some  
62 published literatures have shown that IBD and IBS have overlapped features. Stress is  
63 gradually recognized as a factor in the development of UC (1, 2). In IBS, psychological  
64 stress plays a major role in the etiology through brain-gut axis (3). However, the  
65 etiology of both diseases is unknown.

66 As genome-wide-associations studies (GWAS) became available, more than two

67 hundred genetic risk loci had been identified for IBD (4, 5). Several genomic regions  
68 had also been identified for IBS (6). Transcriptome studies, including both mRNA and  
69 microRNA, have contributed to our understanding of IBD and IBS pathogenesis(7, 8).  
70 A lot of mRNAs, such as HLA-DRB1 and TAP2, have been found to be differentially  
71 expressed in the colon of UC(9). A number of miRNAs, as modulators of gene  
72 expression, have been found to be involved in the initiation, development and  
73 progression of UC, such as miR-21(10), miR-31(11). In IBS, there were also some  
74 mRNA and microRNA found to be differentially expressed, such as INADL (12)and  
75 miR-16 (13). However, it is hard to pinpoint exact risk genes for those polygenic  
76 diseases. Network analysis may shed new light to the disease mechanisms.

77 There are studies combining mRNA and miRNA profiles to identified molecular  
78 mechanisms in UC (14, 15). The analysis which paired miRNA-mRNA was also used  
79 to identify potential candidates in IBS (16). However, few studies compared  
80 transcriptomic signature in UC and IBS to date. Therefore, we hypothesize that  
81 miRNA-mRNA co-expression network and comparing transcriptome study will lead to  
82 better understanding of the core mechanisms of these two diseases with similar  
83 symptoms, UC and IBS.

84 In this study, we aim to compare the transcriptome changes in UC and IBS, and  
85 their connections with psychological stress and immune changes to reveal their distinct  
86 and shared mechanisms. We performed this pilot transcriptome study with both mRNA  
87 and miRNA in UC and IBS. Differential expression analysis and weighted gene co-  
88 expression network analysis (WGCNA) were performed.

89

## 90 **METHODS**

### 91 *1.1 Patients and Controls*

92 The study protocols were submitted to, and approved by the ethics committee of  
93 Peking Union Medical College Hospital (PUMCH). The approval number was S-723.  
94 Patients and Controls were prospectively recruited. Ulcerative patients were diagnosed  
95 using established criteria (17). IBS patients were diagnosed by ROME III criteria (18).  
96 A normal control (NC) was defined as being asymptomatic, undergoing colonoscopy  
97 examination for routine check-up and no abnormality was found under colonoscopy.  
98 Further criteria were as follows.

99 Inclusion criteria: age between 16 and 80 years old; UC or IBS diagnosis  
100 confirmed by gastroenterology physicians of PUMCH; signed informed consent.  
101 Exclusion criteria: past total colorectal resection; comorbidity with severe physical or  
102 mental illness, such as heart failure, schizophrenia and major depressive disorder; any  
103 other contraindications for colonoscopy; UC patients without the presence of  
104 inflammation in the sigmoid colon; self-reported difficulties in reading or  
105 understanding.

106 In this pilot study, 5 UC patients, 5 IBS patients and 5 NC were recruited.

107

### 108 *1.2 Data and questionnaire collection*

109 Data on demographics (age, gender) and degree of inflammation in UC patients  
110 were collected. In UC patients, inflammation of sigmoid mucosa was evaluated

111 according to Mayo scores (19) under colonoscopy. Briefly, active inflammation was  
112 scored 0 as no inflammation, 1 as obscure texture of the blood vessel, 2 as loss of texture  
113 of the blood vessel, and 3 as ulceration and spontaneous bleeding.

114 All of the participators were asked to fill a questionnaire to assess their perceived  
115 stress in the last month. Version PSS-14 of the Perceived Stress Scale (PSS) (20) was  
116 used. PSS-14 is a 14-item questionnaire, focusing on the feelings of stress and handling  
117 of stress during the preceding month. The higher the PSS score, the greater the  
118 perceived stress. Its psychometric properties have been validated in a Chinese  
119 population (21).

120

### 121 ***1.3 Tissue Collection and RNA extraction***

122 Biopsies were taken from the most affected part in sigmoid or from the middle of  
123 the sigmoid if there was no evidence of inflammation. A single endoscopist was  
124 arranged to perform colonoscopy, take biopsies and assess the degree of inflammation.  
125 Biopsies were immediately stored in the RNAlater® (Ambion, Inc., Austin, TX) at 4°C  
126 for the first 24 hours, and then frozen and kept at -80°C until RNA extraction.

127 Total RNA was extracted from frozen biopsies using Trizol® (Invitrogen, Carlsbad,  
128 CA) according to a standard protocol. Sample quality was assessed by both a photo-  
129 spectrometer (Nano Drop Technologies®, Thermo Scientific, Wilmington, DE) and  
130 Agilent 2100 Bioanalyzer. The 260/280 ratios in all samples were between 1.8 to 2.0,  
131 and the RNA integrity number (RIN) were  $\geq 7$ . Total RNA was required to be more  
132 than 1µg before miRNA chip examination.

133

#### 134 ***1.4 Message RNA Sequencing and small RNA chip examination***

135 Message RNA (mRNA) sequencing library was built for each sample by using  
136 KAPA Stranded mRNA-Seq Kit Illumina® platform (KAPA BIOSYSTEMAS). mRNA  
137 libraries were sequenced on the HiSeq2500 (Illumina) following the manufacturer's  
138 protocol. The sequencing data generated in this study can be downloaded from the  
139 NCBI SRA database at <https://www.ncbi.nlm.nih.gov/sra/PRJNA674301>.

140 Affymetrix Genechip miRNA4.0 Array was used to detect the miRNAs. The probe  
141 sequences covered all the mature miRNA in the miRbase V20 and small nuclear RNAs  
142 (snoRNAs and scaRNAs) of humans. Total RNA was labeled with FlashTag™ Biotin  
143 RNA Labeling Kit. After labeling, gene chip hybridization reaction, and scanning,  
144 Affymetrix® GeneChip® Command Console® Software (AGCC) was used to save the  
145 chip's fluorescent scanning image into a .DAT file for further analyses. The microarray  
146 data can be downloaded from the NCBI GEO database at  
147 <http://www.ncbi.nlm.nih.gov/geo/> using accession number GSE160900.

148

#### 149 ***1.5 Statistical Methods and Bioinformatics***

##### 150 *1.5.1 Data preprocessing*

151 For mRNA data, we profiled 57,821 genes from the 15 samples. Expression levels  
152 were quantified with counts by Robust Structural Equation Modeling (RSEM). We  
153 normalized expression with gene length and used transcripts per million (TPM) as  
154 expression value for downstream analyses. Genes were filtered to include those with

155 TPM > 0.1 in at least 20% samples. After filtering, 17,895 genes were remained.

156 For miRNA data, we profiled 4,575 probes from the 15 samples. The miRNA  
157 probes absent in at least 20% samples were filtered and left 852 miRNAs for  
158 downstream analyses.

159 mRNA and miRNA data were combined for differential gene expression analysis  
160 and gene co-expression network analysis. Log<sub>2</sub> transformed data of RNA-seq and  
161 miRNA microarray was quantile normalized, separately (22). The expression level of  
162 mRNA data and miRNA data is distributed in the same scale. After that, we combined  
163 mRNA data and miRNA data in one data matrix for further analysis. Principle  
164 component analysis (PCA) plot and clustering plot were evaluated for sample outliers  
165 with one sample excluded.

#### 166 *1.5.2 Wilcoxon signed-rank test for differential expression analysis*

167 To detect individual mRNA and miRNAs that differentially expressed in patients  
168 and NC, we performed Wilcoxon signed-rank test for differential expression analysis  
169 using R. UC samples versus NC and IBS samples versus NC were performed by  
170 Wilcoxon signed-rank test. Log<sub>2</sub> fold-change (log<sub>2</sub>FC) of mRNA and miRNA was  
171 calculated. Finally, we corrected for multiple testing using false discovery rate (FDR)  
172 correction. We compared overlapped differentially expressed genes and miRNAs in two  
173 diseases with ggplot2 package. The association between differentially expressed genes  
174 (DEGs) and PSS scores were evaluated by Pearson correlation analysis.

#### 175 *1.5.3 Gene co-expression network analysis*

176 To evaluate gene expression relationship of individual genes and miRNAs, we



177 performed Weighted Gene Co-expression Network Analysis (WGCNA) (23). Network  
178 analysis was performed with the WGCNA package using unsigned networks. A soft-  
179 threshold power of 14 was used for all samples to construct scale-free topology  
180 ( $R^2 > 0.8$ ). Networks were constructed using the `blockwiseModules` function. Modules  
181 were summarized by their first principle component (ME, module eigengene), and  
182 defined using Pearson correlation. Genes within each module were prioritized based on  
183 their module membership (kME), defined as correlation to the module eigengene.  
184 Module-disease associations were evaluated using Pearson correlation, with UC and  
185 IBS versus controls, respectively. We also correlated modules with age, gender and PSS.  
186 The p-value of correlation were adjusted by FDR correction.

#### 187 *1.5.4 Gene ontology analysis*

188 We selected genes from modules which were significant different in disease versus  
189 NC, for gene ontology analysis. We used WebGastalt (WEB-based Gene SeT AnaLysis  
190 Toolkit) for gene functional enrichment analysis (24).

#### 191 *1.5.5 miRNA target overlap*

192 For miRNA in significant modules, we searched miRNA target gene from  
193 miRTarBase (25). We summarized the target genes that also have high kME in the same  
194 module.

#### 195 *1.5.6 DEG overlap with GWAS findings*

196 To evaluate whether the DEG has genetic basis, we compared the DEG results and  
197 gene co-expression modules with GWAS findings. We downloaded GWAS results of  
198 UC and IBS from GWAS Catalog (<http://www.ebi.ac.uk/gwas/>).

199

## 200 RESULTS

### 201 *Differential expression*

202 One UC patient was excluded because she was an outlier in PCA and cluster  
203 analysis (Fig. 1). The PCA plot and clustering result also indicate that there were no  
204 outliers among all the samples. The information of participants included in DEG and  
205 differentially expressed miRNA analysis was given in table 1.

206

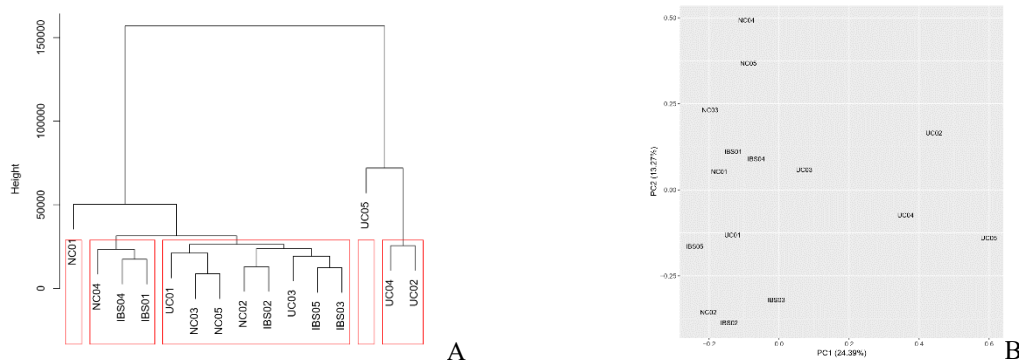


Fig.1 The plot of clustering and principle component analysis (PCA) of all participants. Each participant is represented by each number. A: UC05 was excluded because the height of clustering showed this sample was an outlier. B: UC05 was not gather together with other samples, which was same as clustering result.

207 Table 1 The characteristics of participants in final analyses.

	UC (n=4)	IBS (n=5)	NC (n=5)
Male, n	3	3	3
Age*	35.5 (24.3, 47.5)	38.0 (28.5, 48.0)	44.0 (40.5, 52.0)

---

PSS score*	27.5 (24.7, 40.0)	27.0 (17.5, 32.5)	22.0 (12.0, 28.5)
------------	-------------------	-------------------	-------------------

---

208 \*Values are median (interquartile range). UC: ulcerative colitis, IBS: irritable bowel syndrome, NC:  
209 normal control, PSS: perceived stress scale, n: number.

210

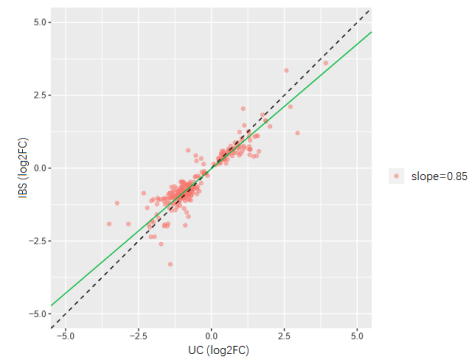
211 Comparing with NC, there were 1770 DEGs and 107 differentially expressed  
212 miRNAs in UC patients, 938 DEGs and 3 differentially expressed miRNAs in IBS  
213 patients by nominal  $P < 0.05$ . However, after multiple testing correction, none of the  
214 DEGs or differentially expressed miRNAs was significant according to FDR of  $P < 0.05$ .

215 Five of the DEGs were related to PSS scores in UC with  $P < 0.01$ , including  
216 SLC4A7 ( $\rho = 0.94$ ), PLCB1 ( $\rho = 0.92$ ), SPATA33 ( $\rho = -0.90$ ), DECR2 ( $\rho = -0.88$ ), RP11-  
217 792A8.4 ( $\rho = -0.87$ ). There were no DEGs correlate with PSS scores in IBS.

218 In UC and IBS, there were 268 overlapped DEGs. Majority of the DEGs (263) had  
219 consistent change in the two diseases. Only five genes were upregulated in IBS but  
220 downregulated in UC. Among these shared genes, AHR, GPR18, CD28, FAM26F,  
221 AC019330.1, LYRM9 are part of GWAS signals in UC. AC019330.1 and LYRM9 were  
222 both downregulated in UC and IBS, while others were upregulated in UC and IBS.

223 The regression slopes of UC and IBS fold change relative to control is 0.85. This  
224 plot indicated that these two diseases have many similar gene changes in the same  
225 direction, and the transcriptomic severity was larger in UC than in IBS (Fig.2).

Fig.2 The regression slopes of UC and IBS fold change effect size. The green line shows the slope is 0.85, indicating the transcriptomic severity was larger in UC than in IBS. Values are log<sub>2</sub> transformed fold change of differential expressed gene (UC vs control or IBS vs control).

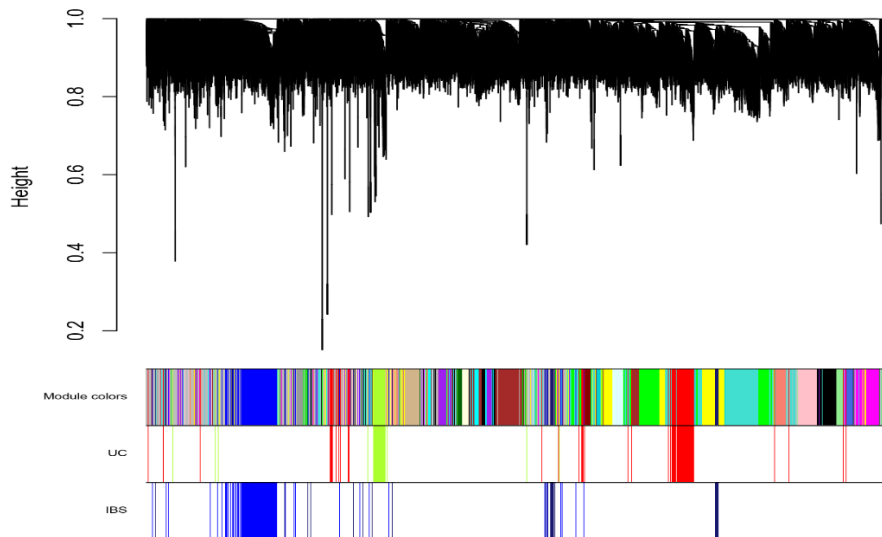


226

### 227 ***Gene co-expression network and gene ontology analysis in UC and IBS patients***

228 In the co-expression network analysis, we identified 44 modules (Fig.3). Based on  
229 Eigengene differential analysis, Module 6 (FDR-corrected  $p=0.04$ ) and 11 (FDR-  
230 corrected  $p=0.02$ ) were identified as significantly different in UC versus NC. Module  
231 15 (FDR-corrected  $p=0.08$ ) and 2 (FDR-corrected  $p=0.08$ ) were different between IBS  
232 and NC (Fig.4). Module 6 and 15 were upregulated in diseases, while module 11 and 2  
233 were suppressed. No significant correlation was detected between any of these modules  
234 and PSS scores.

235 Fig.3 Network dendrogram from co-expression topological overlap of genes in WGCNA. Color bars  
236 show gene co-expression modules. Different colors represent different modules. Color bars of UC and  
237 IBS represent disease-related gene co-expression module.

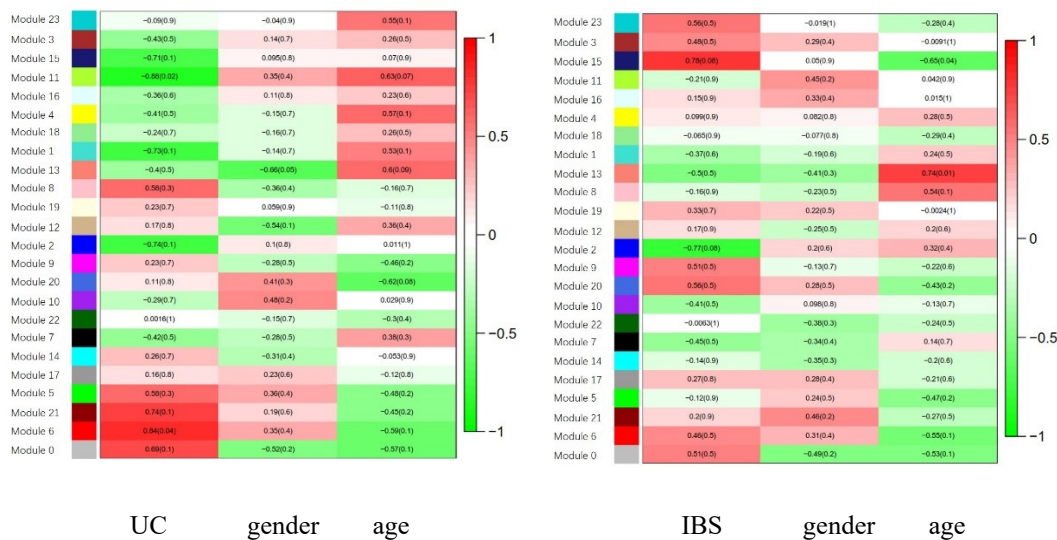


238

239

240 Fig. 4 Heatmap of gene co-expression module that correlate to disease state, gender or age of participants.

241 Values are Pearson correlation coefficient and q value (in the bracket) after multiple testing.



242

243 In the gene ontology annotation on these disease-associated modules, Module 6  
 244 was enriched for activation of immune response, immune response-regulating signaling  
 245 pathway, leukocyte cell-cell adhesion and regulation of cell activation pathways.  
 246 Module 15 was enriched for mitochondrial-related pathways. Module 2 was enriched

247 for DNA transcription and DNA metabolic regulation process.

248 Comparing UC to IBS showed a variety of classes of differential pathway  
249 regulation (Table 2). Leukocyte cell-cell adhesion pathway was found elevated in UC,  
250 but suppressed in IBS. Immune response is activated in UC. In contrast, pathways  
251 annotated as adaptive immune response and inflammatory response to antigenic  
252 stimulus were negatively regulated in IBS.

253 Table 2. Biological pathways in disease-related modules related to immune responses in UC and IBS.

Gene ontology enrichment	P	FDR	MODULE	UC	IBS
activation of immune response	< 0.001	< 0.001	6	↑	
immune response-regulating signaling pathway	< 0.001	< 0.001	6	↑	
	< 0.001	< 0.001	6	↑	
leukocyte cell-cell adhesion	0.002	0.173	2		↓
regulation of cell activation	< 0.001	< 0.001	6	↑	
response to interferon- $\gamma$	< 0.001	< 0.001	6	↑	
regulation of cell-cell adhesion	< 0.001	< 0.001	6	↑	
leukocyte proliferation	< 0.001	< 0.001	6	↑	
response to type I interferon	< 0.001	< 0.001	6	↑	
response to virus	< 0.001	< 0.001	6	↑	
leukocyte differentiation	< 0.001	< 0.001	6	↑	
leukocyte apoptotic process	0.006	1	11	↓	
Adaptive immune response	0.001	0.128	2		↓
inflammatory response to antigenic stimulus	0.002	0.185	2		↓

254 Arrows represent up or down-regulated in disease. UC: ulcerative colitis, IBS: irritable bowel syndrome

255

256 ***MiRNA targets overlap with genes in module 6***

257 From WGCNA results, we identified module 6 in UC as a critical module. There were

258 13 miRNAs in this module. We focused on the miRNA target genes and found 98 target

259 mRNA genes for these 13 miRNAs in module 6. Top 18 of target genes are close to hub

260 of the module 6 ( $p \leq 0.0001$  &  $kME > 0.85$ ) (Fig. 5).

261

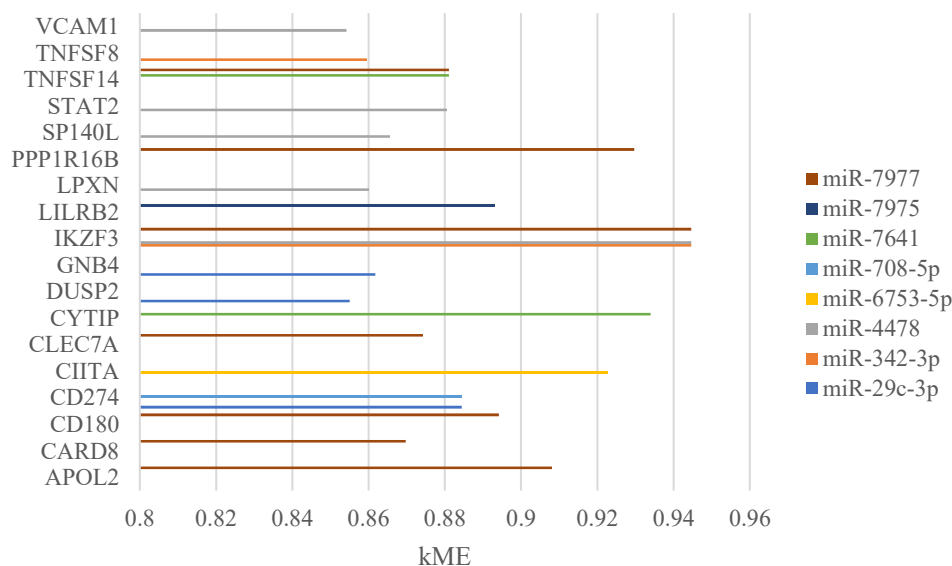


Fig.5 The top gene targeted by high kME miRNA in module 6. Top 18 genes and their kME are provided. Values are module eigengene (kME), which represent the importance of one gene in the module.

262

263 ***DEG overlap with GWAS findings***

264 Among the 1770 DEGs in UC patients, there were 65 genes overlap with GWAS

265 findings. There were 32 overlapped genes in module 6, such as CIITA, IKZF3, LPXN,

266 TNFSF8. In UC, 5 DEG-mRNAs were part of GWAS signals and shared with IBS.  
267 However, they were not overlapped with GWAS signals of IBS. Indeed, we did not find  
268 any DEGs overlapped with GWAS findings in IBS.

269

## 270 **DISCUSSION**

271 In this pilot study, even though the sample size is small, the combined miRNA and  
272 mRNA expression profiling led to significant findings of upregulated module of gene  
273 co-expression and 18 key genes in UC that can survive FDR correction. We found the  
274 overall transcriptome changes in UC and IBS were similar with the same gene changes  
275 in the same direction, but the transcriptomic severity was larger in UC than in IBS.  
276 Psychological stress was only correlated with 5 DEG-mRNAs in UC, but not with co-  
277 expression modules or IBS.

278 Firstly, based on WGCNA and gene ontology analysis, activation of the immune  
279 response, immune response-regulating signaling pathway, leukocyte cell-cell adhesion  
280 and regulation of cell activation pathways were detected as critical pathways  
281 upregulated in UC. The link between immunological process and UC is consistent with  
282 previous studies (26). By integrating miRNA and mRNA results, 18 genes were  
283 supposed be important in the pathogenesis of UC. In those genes, IKZF3 (27), CIITA  
284 (28), TNFSF8 (29), LPXN (30) were also enriched for GWAS signals. IKZF3 is  
285 important in the regulation of B lymphocyte proliferation and differentiation (31).  
286 Leupaxin (LPXN) can play an inhibitory role in BCR signaling and B cell function (32).  
287 That indicates that B cells and adaptive immune system may play a critical role in UC



288 pathogenesis. A former study also identified potential pathways related with immune  
289 response in UC with combined data analysis of expression levels of mRNA and miRNA  
290 (14). However, the public microarray data of mRNA and miRNA they used were not  
291 received from same subjects. Another study used correlation analysis of miRNA and  
292 mRNA in 17 UC patients (15) resulted in 319 DEG-mRNAs overlapped with our results,  
293 including IKZF3 and TNFSF8. However, compared with correlation analysis, WGCNA  
294 used in our study is more efficient (23).

295 Secondly, similar changes of DEGs were found in UC and IBS, but UC has more  
296 DEG and bigger changes. For a long period of time, IBS has been considered as a  
297 functional bowel disease without organic lesions. The rise of molecular biology leads  
298 to some molecular abnormalities being detected in IBS. Some published literatures have  
299 shown that IBD and IBS have overlapped features, such as dysbiosis in gut microbiota  
300 and increased mucosal serotonin availability (33). Our results provided important  
301 evidence for that shared DEGs may be the basis for the common features of these two  
302 diseases. However, UC has bigger changes as an organic disease.

303 We detected opposite regulatory directions between UC and IBS in some  
304 immunological pathways. Immunological pathways were upregulated in UC, which  
305 was accordance with other studies (34). However, intestinal immune system seemed to  
306 be suppressed in IBS. This finding conflicts with other studies (35). Now that chronic  
307 stress can cause immunosuppression (36), immune system might be suppressed in some  
308 disease phase of IBS patients. In another way, chemotactic chemokines and pro-  
309 inflammatory cytokines were found higher in sera and stool samples of IBS (37).

310 However, the changes in transcriptomic level and protein level may be opposite.

311 Therefore, in IBS, whether immune response is suppressed or activated and whether  
312 transcriptome and protein changes in the same direction need further research.

313 Thirdly, our results also give a glimpse on a possible link between psychological  
314 factors and UC. PSS scores were higher in UC patients compared with controls. We  
315 found 5 DEG-mRNAs correlated with PSS scores in UC. Among the 5 DEG-mRNAs,  
316 SLC4A7 was also upregulated in IBS. As a member of solute carrier family, SLC4A7  
317 encodes a sodium bicarbonate cotransporter serving as an ion channel in the epithelium.  
318 The activity of SLC4A7 is modulated by cystic fibrosis transmembrane conductance  
319 regulator (CFTR). Mutations in CFTR can lead to channelopathies with diarrhea (38).  
320 Ion channels may be important in gastrointestinal function and could be influenced by  
321 perceived stress.

322 PSS scores were also higher in IBS patients. However, we did not detect any DEGs  
323 related with perceived stress in IBS. On the one hand, different subtypes of IBS,  
324 including constipation-predominant IBS (IBS-C) and diarrhea-predominant IBS (IBS-  
325 D), have different degree of correlation with psychological factors (39). In Martínez  
326 C's study (16), they found significant relationship between miRNA-mRNAs expression  
327 and PSS scores in patients with IBS-D. A mixed patient group in this study may  
328 minimize the significance. On the other hand, psychological stress may regulate  
329 function of those genes, rather than directly impact on the expression level.

330 IBS had co-expression modules enriched for metabolic pathways, such as  
331 mitochondrial transport, mitochondrial membrane organization and mitochondrial

332 translation. Mitochondrial function is a key player in coordinating cellular metabolism,  
333 immunity and stress response (40). Our results supported that mitochondrial related  
334 pathways might function as a core in the complex mechanisms of IBS.

335 In summary, we performed a pilot study on gene expression and miRNA profiles  
336 of UC and IBS, and simultaneously utilizing WGCNA and miRNA target gene  
337 overlapping methods to identify core genes. The immunological pathways in UC were  
338 highlighted again. Mitochondrial related pathways were emphasized in IBS. Some  
339 immunological pathways seemed to play an inverse role between UC and IBS.

340 Our research has some limitations. Primarily, as a pilot study, the sample size is  
341 small, leading to the insufficient statistical power to identify significant DEGs when  
342 stringent criteria applied. Nevertheless, we identified reasonable key genes by  
343 conducting WGCNA and miRNA analysis. Second, PSS may not precisely reflect the  
344 impact of stress on UC patients. In future study, objective testing for physiological  
345 markers of stress, such as salivary cortisol levels could be used. Third, due to the  
346 limitation of experimental cost, those key genes and pathways were not verified by a  
347 second technique and functional experiments. We also do not have another data to  
348 validate the overall findings. Additional experiments are warranted to confirm the  
349 findings of this study.

350

## 351 **CONCLUSIONS**

352 Overall transcriptome changes in UC and IBS were similar, but the transcriptomic  
353 severity was larger in UC. By WGCNA and gene ontology analysis, it was indicated

354 that immunological mechanism might play a central role in UC's development, while  
355 mitochondrial related pathways might be important in IBS. There was some sort of  
356 association between perceived stress and UC.

357

## 358 **LIST OF ABBREVIATIONS**

UC	Ulcerative colitis
IBS	Irritable bowel syndrome
IBS-C	Constipation-predominant IBS
IBS-D	Diarrhea-predominant IBS
PSS	Perceived stress scale
DEG	Differentially expressed gene
mRNA	Message RNA
miRNA	microRNA
WGCNA	Weighted gene co-expression network analysis
GO	Gene ontology
GWAS	Genome-wide-associations studies
IBD	Inflammatory bowel disease
HLA-DRB1	Human leukocyte antigen-DR beta 1
TAP2	Transporter 2, ATP binding cassette subfamily B member
INADL	InaD-like gene
PUMCH	Peking Union Medical College Hospital
NC	Normal control
RSEM	Robust Structural Equation Modeling
TPM	Transcripts per million
PCA	Principle component analysis
Log <sub>2</sub> FC	Log <sub>2</sub> fold-change
FDR	False discovery rate
ME	Module eigengene
WebGastalt	WEB-based Gene SeT AnaLysis Toolkit
IQR	Interquartile range
SLC4A7	Solute carrier family 4 member 7
PLCB1	Phospholipase C Beta 1
SPATA33	Spermatogenesis Associated 33
DECR2	2,4-Dienoyl-CoA Reductase 2
RP11-792A8.4	
AHR	Aryl Hydrocarbon Receptor
GPR18	G Protein-Coupled Receptor 18
CD28	CD28 Molecule
FAM26F	Family With Sequence Similarity 26, Member F

AC019330.1	
LYRM9	LYR Motif Containing 9
VCAM1	Vascular Cell Adhesion Molecule 1
TNFSF8	Tumor Necrosis Factor (Ligand) Superfamily, Member 8
TNFSF14	Tumor Necrosis Factor (Ligand) Superfamily, Member 14
STAT2	Signal Transducer And Activator Of Transcription 2
SP140L	SP140 Nuclear Body Protein Like
PPP1R16B	Protein Phosphatase 1 Regulatory Subunit 16B
LPXN	Leupaxin
LILRB2	Leukocyte Immunoglobulin Like Receptor B2
IKZF3	IKAROS Family Zinc Finger 3
GNB4	G Protein Subunit Beta 4
DUSP2	Dual Specificity Phosphatase 2
CYTIP	Cytohesin 1 Interacting Protein
CLEC7A	C-Type Lectin Domain Containing 7A
CIITA	Class II Major Histocompatibility Complex Transactivator
CD274	CD274 Molecule (同时也是 PD-L1)
CD180	CD180 Molecule
CARD8	Caspase Recruitment Domain Family Member 8
APOL2	Apolipoprotein L2
CFTR	Cystic fibrosis transmembrane conductance regulator

359

## 360 **DECLARATIONS**

### 361 **Ethics approval and consent to participate**

362 The study protocols were submitted to, and approved by the ethics committee of Peking  
363 Union Medical College Hospital (PUMCH). The approval number was S-723.  
364 Informed consent was obtained from all subjects or, if subjects are under 18, from a  
365 parent. All methods were carried out in accordance with relevant guidelines and  
366 regulations along with the approval.

367

### 368 **Consent for publication**

369 Not applicable

370

371 **Availability of data and materials**

372 The sequencing data generated in this study has been deposited in the NCBI SRA  
373 database (<https://www.ncbi.nlm.nih.gov/sra/PRJNA674301>).

374

375 **Competing interests**

376 The authors declare that they have no competing interests.

377

378 **Funding**

379 This work was supported by Scientific research projects of public welfare industry  
380 (Grant No. 201002020, 201502005) and Medical science and health technology  
381 innovation projects of the Chinese academy of medical science (Grant No. 2016-I2M-  
382 3-001, 2019-I2M-2-007).

383

384 **Authors' contributions**

385 Han-Qing Luo performed the experiments and drafted the manuscript; Jia-Cheng Dai  
386 helped to analyze the data and prepare the figures; Chun-Yu Liu and Jia-Ming Qian  
387 edited and revised the manuscript; Han-Qing Luo, Yue Lee, Hong Lv and Jia-Ming  
388 Qian designed the research. All authors read and approved the final manuscript.

389

390 **Acknowledgements**

391 Not applicable

## REFERENCES

1. Tabibian A, Tabibian JH, Beckman LJ, Raffals LL, Papadakis KA, Kane SV: **Predictors of health-related quality of life and adherence in Crohn's disease and ulcerative colitis: implications for clinical management.** *Digestive diseases and sciences* 2015, **60**(5):1366-1374.
2. Engler H, Elsenbruch S, Rebernik L, Kocke J, Cramer H, Schols M, Langhorst J: **Stress burden and neuroendocrine regulation of cytokine production in patients with ulcerative colitis in remission.** *Psychoneuroendocrinology* 2018, **98**:101-107.
3. Pellissier S, Bonaz B: **The Place of Stress and Emotions in the Irritable Bowel Syndrome.** *Vitamins and hormones* 2017, **103**:327-354.
4. Spekhorst LM, Visschedijk MC, Weersma RK, Festen EA: **Down the line from genome-wide association studies in inflammatory bowel disease: the resulting clinical benefits and the outlook for the future.** *Expert review of clinical immunology* 2015, **11**(1):33-44.
5. Huang H, Fang M, Jostins L, Umicevic Mirkov M, Boucher G, Anderson CA, Andersen V, Cleynen I, Cortes A, Crins F *et al*: **Fine-mapping inflammatory bowel disease loci to single-variant resolution.** *Nature* 2017, **547**(7662):173-178.
6. Bonfiglio F, Henström M, Nag A, Hadizadeh F, Zheng T, Cenit MC, Tigchelaar E, Williams F, Reznichenko A, Ek WE *et al*: **A GWAS meta-analysis from 5 population-based cohorts implicates ion channel genes in the pathogenesis of irritable bowel syndrome.** *Neurogastroenterology and motility : the official journal of the European Gastrointestinal Motility Society* 2018, **30**(9):e13358.
7. Cao B, Zhou X, Ma J, Zhou W, Yang W, Fan D, Hong L: **Role of MiRNAs in Inflammatory Bowel Disease.** *Digestive diseases and sciences* 2017, **62**(6):1426-1438.
8. Camilleri M, Carlson P, Acosta A, Busciglio I, Nair AA, Gibbons SJ, Farrugia G, Klee EW: **RNA sequencing shows transcriptomic changes in rectosigmoid mucosa in patients with irritable bowel syndrome-diarrhea: a pilot case-control study.** *American journal of physiology Gastrointestinal and liver physiology* 2014, **306**(12):G1089-1098.
9. Cheng B, Liang X, Wen Y, Li P, Zhang L, Ma M, Cheng S, Du Y, Liu L, Ding M *et al*: **Integrative analysis of transcriptome-wide association study data and messenger RNA expression profiles identified candidate genes and pathways for inflammatory bowel disease.** *Journal of cellular biochemistry* 2019, **120**(9):14831-14837.
10. Simone NL, Soule BP, Ly D, Saleh AD, Savage JE, Degraff W, Cook J, Harris CC, Gius D, Mitchell JB: **Ionizing radiation-induced oxidative stress alters miRNA expression.** *PLoS One* 2009, **4**(7):e6377.
11. Whiteoak SR, Claridge A, Balendran CA, Harris RJ, Gwiggner M, Bondanese VP, Erlandsson F, Hansen MB, Cummings JRF, Sanchez-Elsner T: **MicroRNA-31 Targets Thymic Stromal Lymphopoietin in Mucosal Infiltrated CD4+ T Cells: A Role in Achieving Mucosal Healing in Ulcerative Colitis?** *Inflammatory bowel diseases* 2018, **24**(11):2377-2385.
12. Camilleri M, Carlson P, Valentin N, Acosta A, O'Neill J, Eckert D, Dyer R, Na J, Klee EW, Murray JA: **Pilot study of small bowel mucosal gene expression in patients with irritable bowel syndrome with diarrhea.** *American journal of physiology Gastrointestinal and liver physiology* 2016, **311**(3):G365-376.
13. Wohlfarth C, Schmitteckert S, Härtle JD, Houghton LA, Dweep H, Fortea M, Assadi G, Braun

- A, Mederer T, Pöhner S *et al*: **miR-16 and miR-103 impact 5-HT(4) receptor signalling and correlate with symptom profile in irritable bowel syndrome**. *Scientific reports* 2017, **7**(1):14680.
14. Yang L, Bian Y, Li Z, Yan Y, Li J, Li W, Zeng L: **Identification of potential biomarkers and pathways in ulcerative colitis with combined public mRNA and miRNA expression microarray data analysis**. *Journal of gastrointestinal oncology* 2019, **10**(5):847-858.
15. Van der Goten J, Vanhove W, Lemaire K, Van Lommel L, Machiels K, Wollants WJ, De Preter V, De Hertogh G, Ferrante M, Van Assche G *et al*: **Integrated miRNA and mRNA expression profiling in inflamed colon of patients with ulcerative colitis**. *PLoS one* 2014, **9**(12):e116117.
16. Martínez C, Rodiño-Janeiro BK, Lobo B, Stanifer ML, Klaus B, Granzow M, González-Castro AM, Salvo-Romero E, Alonso-Cotoner C, Pigrau M *et al*: **miR-16 and miR-125b are involved in barrier function dysregulation through the modulation of claudin-2 and cingulin expression in the jejunum in IBS with diarrhoea**. *Gut* 2017, **66**(9):1537-1538.
17. Magro F, Gionchetti P, Eliakim R, Ardizzone S, Armuzzi A, Barreiro-de Acosta M, Burisch J, Gecse KB, Hart AL, Hindryckx P *et al*: **Third European Evidence-based Consensus on Diagnosis and Management of Ulcerative Colitis. Part 1: Definitions, Diagnosis, Extra-intestinal Manifestations, Pregnancy, Cancer Surveillance, Surgery, and Ileo-anal Pouch Disorders**. *Journal of Crohn's & colitis* 2017, **11**(6):649-670.
18. Longstreth GF, Thompson WG, Chey WD, Houghton LA, Mearin F, Spiller RC: **Functional bowel disorders**. *Gastroenterology* 2006, **130**(5):1480-1491.
19. D'Haens G, Sandborn WJ, Feagan BG, Geboes K, Hanauer SB, Irvine EJ, Lemann M, Marteau P, Rutgeerts P, Scholmerich J *et al*: **A review of activity indices and efficacy end points for clinical trials of medical therapy in adults with ulcerative colitis**. *Gastroenterology* 2007, **132**(2):763-786.
20. Cohen S, Kamarck T, Mermelstein R: **A global measure of perceived stress**. *J Health Soc Behav* 1983, **24**(4):385-396.
21. Leung DY, Lam TH, Chan SS: **Three versions of Perceived Stress Scale: validation in a sample of Chinese cardiac patients who smoke**. *BMC Public Health* 2010, **10**:513.
22. Bolstad BM, Irizarry RA, Astrand M, Speed TP: **A comparison of normalization methods for high density oligonucleotide array data based on variance and bias**. *Bioinformatics (Oxford, England)* 2003, **19**(2):185-193.
23. Langfelder P, Horvath S: **WGCNA: an R package for weighted correlation network analysis**. *BMC bioinformatics* 2008, **9**:559.
24. Wang J, Duncan D, Shi Z, Zhang B: **WEB-based GENE SeT Analysis Toolkit (WebGestalt): update 2013**. *Nucleic acids research* 2013, **41**(Web Server issue):W77-83.
25. Hsu SD, Lin FM, Wu WY, Liang C, Huang WC, Chan WL, Tsai WT, Chen GZ, Lee CJ, Chiu CM *et al*: **miRTarBase: a database curates experimentally validated microRNA-target interactions**. *Nucleic acids research* 2011, **39**(Database issue):D163-169.
26. Choy MC, Visvanathan K, De Cruz P: **An Overview of the Innate and Adaptive Immune System in Inflammatory Bowel Disease**. *Inflammatory bowel diseases* 2017, **23**(1):2-13.
27. de Lange KM, Moutsianas L, Lee JC, Lamb CA, Luo Y, Kennedy NA, Jostins L, Rice DL, Gutierrez-Achury J, Ji SG *et al*: **Genome-wide association study implicates immune activation of multiple integrin genes in inflammatory bowel disease**. *Nature genetics*



- 2017, **49**(2):256-261.
28. McGovern DP, Gardet A, Törkvist L, Goyette P, Essers J, Taylor KD, Neale BM, Ong RT, Lagacé C, Li C *et al.* **Genome-wide association identifies multiple ulcerative colitis susceptibility loci.** *Nature genetics* 2010, **42**(4):332-337.
29. Anderson CA, Boucher G, Lees CW, Franke A, D'Amato M, Taylor KD, Lee JC, Goyette P, Imielinski M, Latiano A *et al.* **Meta-analysis identifies 29 additional ulcerative colitis risk loci, increasing the number of confirmed associations to 47.** *Nature genetics* 2011, **43**(3):246-252.
30. Ellinghaus D, Jostins L, Spain SL, Cortes A, Bethune J, Han B, Park YR, Raychaudhuri S, Pouget JG, Hübenthal M *et al.* **Analysis of five chronic inflammatory diseases identifies 27 new associations and highlights disease-specific patterns at shared loci.** *Nature genetics* 2016, **48**(5):510-518.
31. Billot K, Parizot C, Arrouss I, Mazier D, Debre P, Rogner UC, Rebollo A: **Differential aiolos expression in human hematopoietic subpopulations.** *Leukemia research* 2010, **34**(3):289-293.
32. Chew V, Lam KP: **Leupaxin negatively regulates B cell receptor signaling.** *The Journal of biological chemistry* 2007, **282**(37):27181-27191.
33. Spiller R, Major G: **IBS and IBD - separate entities or on a spectrum?** *Nature reviews Gastroenterology & hepatology* 2016, **13**(10):613-621.
34. Ramos GP, Papadakis KA: **Mechanisms of Disease: Inflammatory Bowel Diseases.** *Mayo Clinic proceedings* 2019, **94**(1):155-165.
35. Lazaridis N, Germanidis G: **Current insights into the innate immune system dysfunction in irritable bowel syndrome.** *Annals of gastroenterology* 2018, **31**(2):171-187.
36. Hou DD, Zhu RZ, Sun Z, Ma XD, Wang DC, Timothy H, Chen WN, Yan F, Lei P, Han XW *et al.* **Serum Proteomics Analysis in Rats of Immunosuppression Induced by Chronic Stress.** *Scandinavian journal of immunology* 2016, **84**(3):165-173.
37. Darkoh C, Comer L, Zewdie G, Harold S, Snyder N, Dupont HL: **Chemotactic chemokines are important in the pathogenesis of irritable bowel syndrome.** *PloS one* 2014, **9**(3):e93144.
38. Beyder A, Farrugia G: **Ion channelopathies in functional GI disorders.** *American journal of physiology Gastrointestinal and liver physiology* 2016, **311**(4):G581-g586.
39. Jones MP, Chey WD, Singh S, Gong H, Shringarpure R, Hoe N, Chuang E, Talley NJ: **A biomarker panel and psychological morbidity differentiates the irritable bowel syndrome from health and provides novel pathophysiological leads.** *Alimentary pharmacology & therapeutics* 2014, **39**(4):426-437.
40. Rath E, Moschetta A, Haller D: **Mitochondrial function - gatekeeper of intestinal epithelial cell homeostasis.** *Nature reviews Gastroenterology & hepatology* 2018, **15**(8):497-516.