

## Supplementary Material

<b>Questionnaire .....</b>	<b>2</b>
<b>Swab sample analysis.....</b>	<b>7</b>
<b>Sample transport and storage.....</b>	<b>7</b>
<b>Sample selection for plaque reduction neutralization test (PRNT).....</b>	<b>7</b>
<b>Supplementary Figure 1 .....</b>	<b>8</b>
<b>Supplementary Figure 2 .....</b>	<b>9</b>
<b>Supplementary Figure 3 .....</b>	<b>10</b>
<b>Supplementary Table 1.....</b>	<b>11</b>
<b>Supplementary Table 2.....</b>	<b>12</b>
<b>Supplementary Table 3.....</b>	<b>13</b>
<b>Supplementary Table 4.....</b>	<b>14</b>
<b>Supplementary Table 5.....</b>	<b>15</b>
<b>Supplementary Table 6.....</b>	<b>16</b>

## Questionnaire

The questionnaire was developed ad hoc by the project team. The response options were provided in the form of checkboxes, dropdown menus, and free-text fields for numerical data such as age in years or duration of COVID-19-related symptoms in days. The questionnaire was made available in both German and Italian languages.

COVID-19 in South Tyrol: an epidemiological study

*The data will be used in pseudo-anonymized form for studies investigating COVID-19 and related pathologies. You can request the deletion of your data at any time.*

A1. Gender:     Male             Female

A2. Age:        \_\_\_\_\_

A3. Mother tongue:     German             Italian             Ladin             Other language

A4. Municipality of residence:    [drop-down menu]    \_\_\_\_\_

A5. Citizenship:  Italian             Foreign

A6. Highest level of education:

- Primary school or no title
- Lower secondary school
- Vocational secondary school (2-3 years after secondary school)
- Upper secondary school
- University or a degree higher than the upper secondary school

A7. In which area are you currently employed?

- Agriculture and forestry, livestock
- Energy sector, water/wastewater, waste disposal
- Skilled trade, industry, installation and repair of equipment/vehicles
- Construction sector, public structures
- Commercial sector (incl. pharmacies)
- Transportation, magazines
- Food service und tourism
- Information and communication technology
- Finance and insurance
- Real estate sector
- Freelance and support services for companies, science
- Public administration, law enforcement agencies
- Education sector
- Health and social services (incl. facilities for small children)
- Housewife/Homemaker
- Currently seeking employment
- Retired
- Student/Pupil

A8. How many people in total, including yourself, live in your same household? \_\_\_\_\_

B1. How do you evaluate your health status in general?

Very poor

Poor

Fair

Good

Very good

B2. Do you suffer from or have you been diagnosed with any of the following chronic diseases?

(Multiple answers possible)

- Lung diseases (e.g. asthma, chronic obstructive pulmonary disease)
- Cardiovascular diseases (e.g. coronary heart disease, atrial fibrillation, heart failure, stroke/circulation disorders in the brain)
- High blood pressure
- Kidney diseases
- Diseases of the immune system
- Tumour diseases
- Metabolic diseases (e.g. diabetes, excess weight)
- Liver diseases
- Mental illness, depression and/or anxiety disorder
- None of the above

B3. Have your health problems *worsened* or have *new ones occurred* since March 2020?

(Multiple answers possible)

- Musculoskeletal problems (spine, joints, muscles etc.)
- High blood pressure / hypertensive crisis
- Diabetes / blood sugar imbalances
- Heart troubles
- Respiratory or lung diseases
- Depressive mood / anxiety
- Sleeping disorders
- None of the above

B4. Further relevant information about you: (Multiple answers possible)

- Surgical procedures under general anaesthesia within the past year
- Radiation therapy or chemotherapy within the past year
- Organ transplantation during the course of your life
- Respiratory allergies (e.g. hay fever)
- Other allergies
- Pregnancy (currently pregnant)
- I am incapable of carrying out my daily activities independently
- None of the above

B5. Have you received the following vaccinations? (Multiple answers possible)

- Flu vaccination this past fall
- Pneumococcal vaccination in the last 12 months
- Other vaccinations in the last 12 months
- None of the above

B6. Do you take one or more of the following medications/dietary supplements regularly?

(Multiple answers possible)

- Aspirin (Cardioaspirina, Aspirinetta, Cardirene)
- Other blood-thinning medications (e.g. Sintrom, Coumadin, Eliquis, Pradaxa, Xarelto etc.)
- Medications for high blood pressure
- Medications to lower cholesterol
- Medications to treat diabetes
- Medications to treat tumour diseases
- Cortisone or immunosuppressive medications
- Anti-inflammatory drugs (e.g. Voltaren, Diclofenac, Oki, Ibuprofen)
- Sedatives/anti-anxiety medications, antidepressants, antipsychotics
- Dietary supplements (e.g. vitamins, minerals)
- None of the above

B7. Between 1 February 2020 and today: had you experienced, or do you have one or more of the following symptoms? (Multiple answers possible)

- Fever over 37,5° for at least three consecutive days
- Cough
- Sore throat or cold symptoms
- Headache
- Muscle or body aches (pain in muscles, bones and/or joints)
- Loss of taste or smell
- Difficulty breathing
- Chest pain or pressure
- Accelerated pulse
- Digestive problems (diarrhoea / nausea / vomiting)
- Conjunctivitis (pink eye / eye pain)
- Asthenia (weakness, generally feeling unwell)
- I had/have none of these symptoms

B8. For how many days did you have these symptoms? \_\_\_\_\_

B9. In which time period did you experience these symptoms?

- First half of February
- Second half of February
- First half of March
- Second half of March
- April
- May
- June

B10. Who have you contacted to report suspicious symptoms?

- Family doctor
- Emergency Number 112
- Green Number 800 751 751
- I went directly to hospital/first aid
- I had symptoms but did not contact anyone
- I had no symptoms and therefore did not contact anyone

B11. Have you already undergone a *smear test* for the new coronavirus?

- Yes, with a positive result of the first smear
- Yes, with a negative result of the first smear
- Yes, but I do not know the result
- No

B12. Have you already undergone an *antibody test* for the new coronavirus?

- Yes, by means of a rapid test (blood sample from finger), with a positive result
- Yes, by means of a rapid test (blood sample from finger), with a negative result
- Yes, by means of a serological test (blood sample taken in usual manner), with a positive result
- Yes, by means of a serological test (blood sample taken in usual manner), with a negative result
- No

B13. Have you been hospitalised because of a suspected or confirmed COVID-19 infection or have you been prescribed home isolation?

- Yes, I was in hospital
- Yes, I was in home isolation
- Yes, I was in home isolation and in hospital
- Yes, in a different facility (Gossensaß or private clinic)
- No

B14. Do you smoke or have you smoked in the past?

- I have never smoked (or *less* than 100 cigarettes in my life)
- Not currently, but I used to smoke
- Yes, I smoke occasionally (not daily)
- Yes, I smoke less than 10 cigarettes per day
- Yes, I smoke 10 to 20 cigarettes per day
- Yes, I smoke more than 20 cigarettes per day

B15. Your height (in cm): \_\_\_\_\_

B16. Your weight (in kg): \_\_\_\_\_

C1. Between 9 March (Government Emergency Decree) and 3 May 2020: how did you practice your profession?

- I continued to work at my usual place of employment
- from home/Smart work
- I had to interrupt my work activity due to the emergency
- I do not work, and I did not work in February either
- I was transferred to the wage compensation fund

C2. Between 9 March 2020 and 3 May 2020: how often did you use public transportation during this time period?  
\_\_\_\_\_ days per week, on average

C3. Between 9 March,2020 und 3 May 2020: with which people were you in close contact? (except household)

- with no one
- with close family members
- with other relatives
- with work colleagues and/or superiors
- with dependent persons (e.g. people in need of care)
- with friends
- others: \_\_\_\_\_

C4. How many people were you in close contact with during this period? (except household) \_\_\_\_\_

C5. Were you in close contact (less than 2 m distance, enclosed rooms such as home, workplace, transportation) with *confirmed* COVID-19-infected persons?

- Yes             No             Don't know

C6. Were you in close contact (less than 2 m distance, enclosed rooms such as home, workplace, transportation) with *suspected* COVID-19-cases?

- Yes             No             Don't know

## Swab sample analysis

Swab samples were analyzed at the ÖNORM-accredited (EN ISO 15189:2013) diagnostic laboratory of the Institute of Virology of the Innsbruck Medical University (IVIMU, Austria), after being kept in virus transport medium (2 mL, Hanks Balanced Salt Solution with 2% fetal bovine serum, 100 µg/ml Gentamicin, 0.5 µg/ml Fungizone) until testing. For RNA extraction, 50 µl of the inoculated virus transport medium was incubated with an in-house direct lysis buffer (10 mM TRIS-HCl pH 7.4, 25 nM NaCl, 0.5% IGEPAL, 10 Units RiboLock RNase Inhibitor in DEPC-treated Water) for 20 minutes at room temperature. Ten µl RNA eluates were used in a 20 µl RealStar® SARS-CoV-2 RT-PCR (Altona-Diagnostics GmbH, Hamburg, Germany) master mix on the CFX96™ RT-PCR Detection System (Bio-Rad Laboratories, Inc.). To confirm positive samples, RNA was extracted again from the original material using the EasyMag® NucliSENS® System (Biomérieux Deutschland, Nürtingen, Germany) and used for RT-PCR as described above.

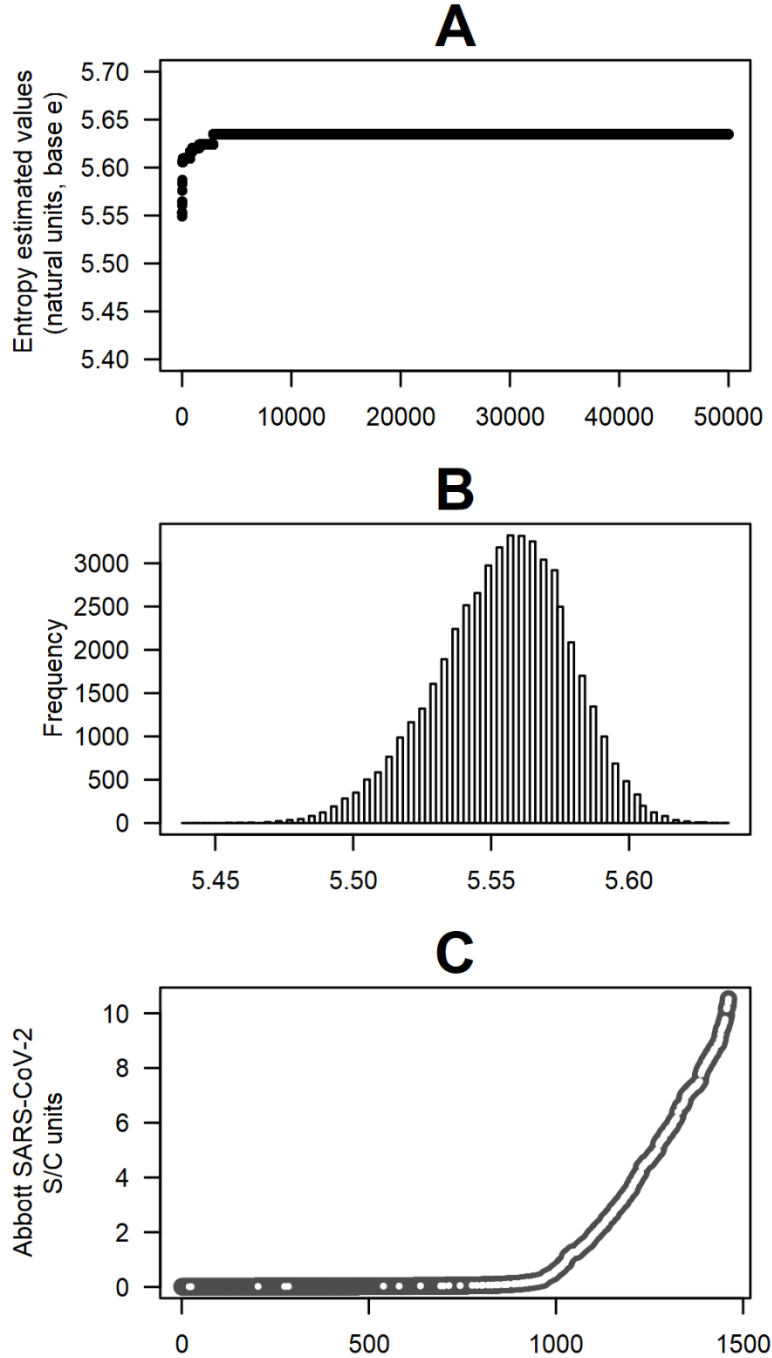
## Sample transport and storage

Biological samples (serum of 6+ year old participants; serum and whole blood of 18+ year old participants) were transferred from the Bressanone/Brixen Hospital to the Eurac Research biobank at the Bolzano/Bozen Hospital at 4°C controlled temperature. The serological analysis leftover was split into up-to-4 250 µl aliquots (Thermo Scientific™ Nunc™ Biobanking Tubes, Ref. 374086, Thermo Fisher Scientific) using a Hamilton Robotics STARlet liquid handler. Samples were frozen by direct immersion in liquid nitrogen and stored at -80°C together with an additional 3 ml whole blood/EDTA tube (VACUETTE®, Ref. 454411, Greiner).

## Sample selection for plaque reduction neutralization test (PRNT)

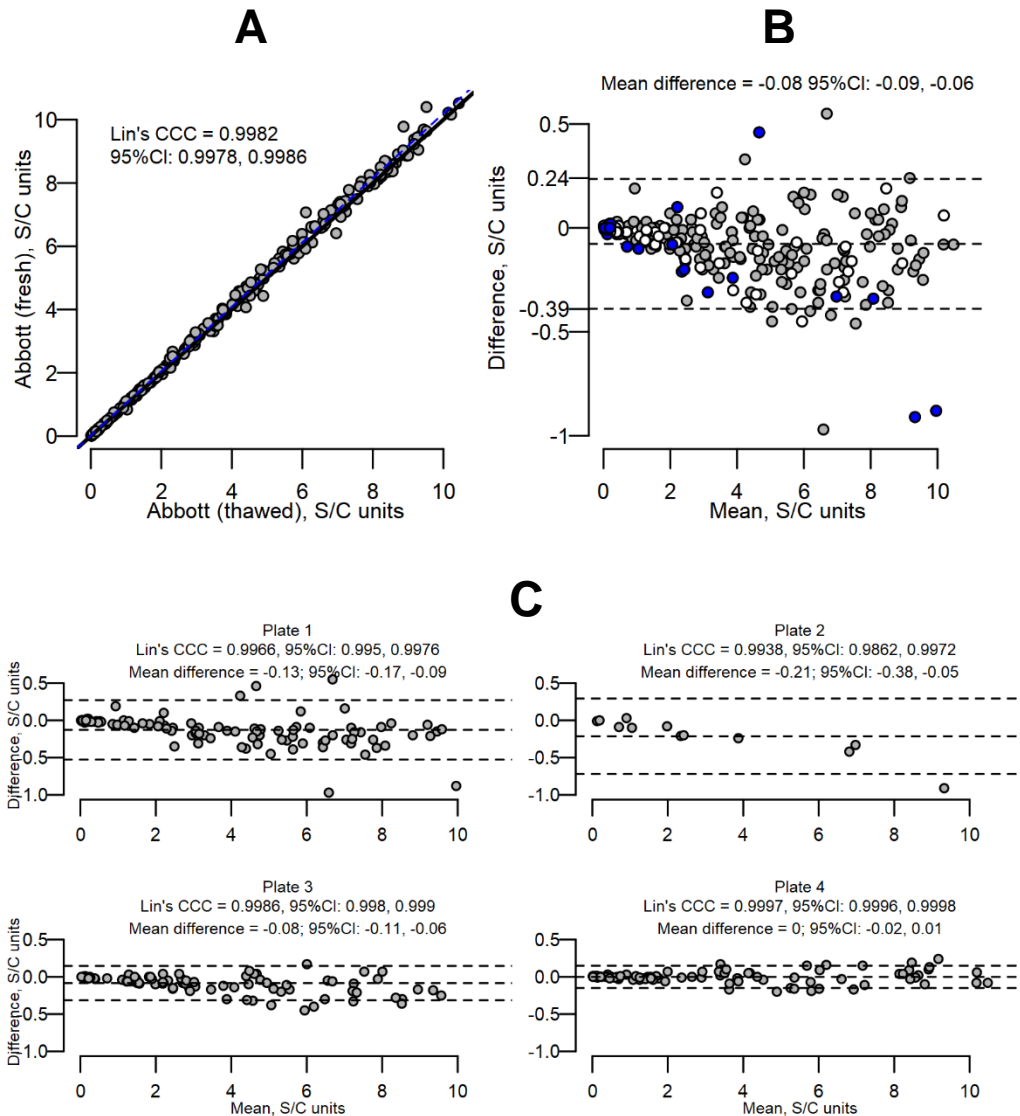
From the 2129 samples with available serological test results, we selected 299 samples to submit to PRNT (sample size defined by budgetary and logistical constraints). To maximize the utility of the 299 samples from the 2129 individuals, we subset the 1461 ones with maximal storage availability (4 cryo-conserved aliquots) and valid response to both questions B11 “*Have you already undergone a smear test for the new coronavirus?*” and B13 “*Have you been hospitalised because of a suspected or confirmed COVID-19 infection or have you been prescribed home isolation?*” (see Questionnaire above, page 5). To select the most informative subset of 299 samples out of the available 1461 ones, we split the 1461 observations into 280 quantiles using the *ntiles()* function implemented in the R package ‘schoRsch’ version 1.8[1] guaranteeing at least 3 available samples per bin. Within each bin, we aimed at selecting the combination of samples maximizing the information content of the corresponding epidemiological database. We implemented an iterative algorithm that, each time, sampled 299 samples (1 or 2 per bin) and calculated an entropy index on the corresponding dataset from the questionnaires’ responses. Each time, if the entropy value estimated from the newly extracted 299 samples was larger than the previously estimated one, then the new set was retained, otherwise, it was discarded. Entropy was estimated using a shrinkage method based on a Dirichlet distribution as implemented in the *entropy()* function in the R package “infotheo” version 1.2.0 (<https://cran.r-project.org/package=infotheo>). We performed 50,000 resamplings. Sensitivity analyses using alternative methods gave identical results, namely: the same 299 selected samples. **Suppl. Fig. 1A** shows that the maximal entropy was achieved after about 5000 iterations, making it unlikely that a better configuration could arise beyond the 50,000<sup>th</sup> iteration. Entropy distribution is given in **Suppl. Fig. 1B**. In terms of S/C (AAI) values, the 299 selected samples were evenly distributed over the whole available range of the 1461 starting samples (**Suppl. Fig. 1C**). Analyses were performed using the software R version 3.6.3 ([www.r-project.org](http://www.r-project.org)).

**Supplementary Figure 1.** Sample selection for neutralization capacity test. **Panel A:** estimation of the entropy value for each of 50,000 iterations: the early stabilization suggests that it is unlikely to identify a more informative sample with more iterations. **Panel B:** entropy distribution in the 299 selected samples. **Panel C:** Levels of the 299 selected samples in S/C (AAI) units (white dots) in the context of the 1461 starting samples (black dots), sorted by increasing value: selected samples cover well the original distribution.

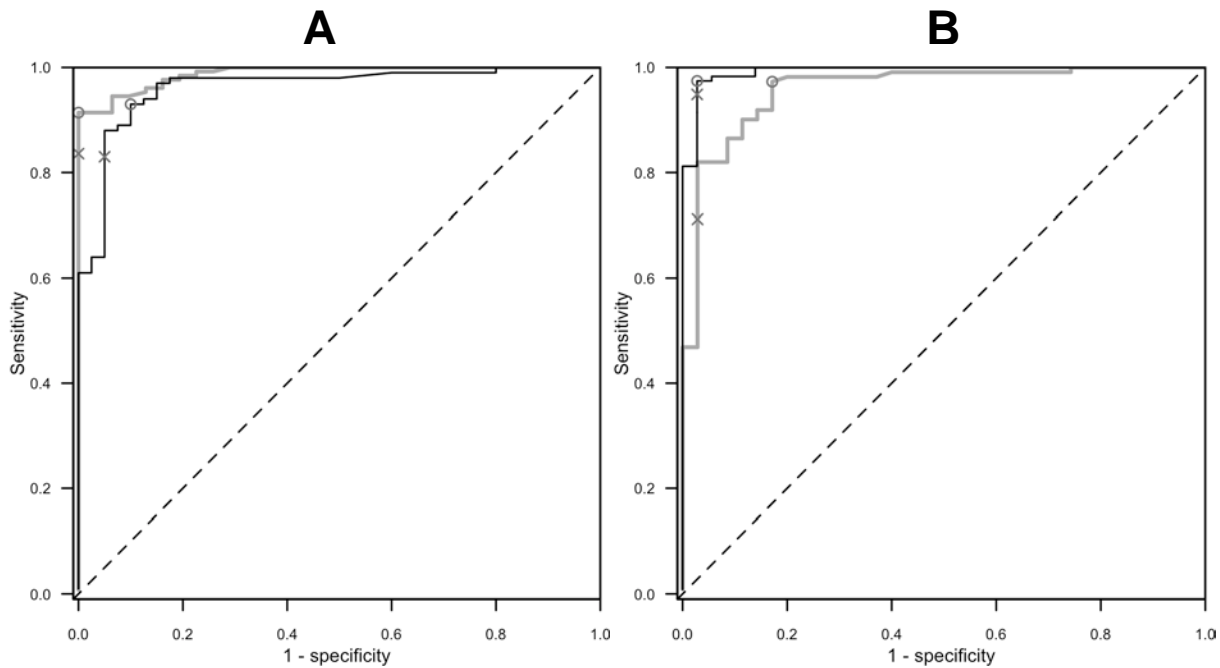




**Supplementary Figure 2.** Concordance between S/C (AAI) levels from the Abbott test on fresh serum and thawed serum after freezing, evaluated using Lin's concordance correlation coefficient (CCC)[2] and Bland & Altman (B&A)'s plot.[3] **Panel A:** The linear regression fitted line overlapping the bisecting line and the very high Lin's CCC estimated coefficient indicate almost perfect concordance. **Panel B:** B&A's plot showing mean S/C (AAI) units across the two measurements (x-axis) versus the difference of values on fresh versus thawed serum: white dots indicate samples for which a slightly lipemic, lipemic, slightly haemolytic, or haemolytic status was observed (when removing these samples, Lin's CCC = 0.9986, 95%CI: 0.9977, 0.9992); blue dots identify the few samples that were stored for >1 day (up to 3 days) before processing and freezing (when removing these samples, Lin's CCC was 0.9985, 95%CI: 0.9982, 0.9992). **Panel C:** B&A's plots by plate: while plate effect explained ~13% of the differences between S/C values measured by Abbott test on fresh versus thawed serum, within-plate concordance was very high (Lin's CCC >0.99 for every plate).



**Supplementary Figure 3.** ROC curve sub-group analyses. The cross symbol corresponds to the classifier performance at the 1.40 canonical S/C (AAI) threshold (Abbott assay). The optimal classifier based on the Youden's index ( $J$ ) may vary and is displayed with a circle in each curve. The thresholds obtained from 10-fold cross validation and repeated random sub-sampling validation differ from the thresholds obtained from the respective sub-groups shown in these plots, limiting their reliability and applicability. **Panel A:** Sex groups. Black and dark gray lines represent the ROC curves obtained for females ( $n=140$ ) and males ( $n=159$ ), respectively. Of note, restriction to males yields no false positives for the canonical 1.40 threshold. **Panel B:** Age groups. Black and dark gray lines represent participants  $\geq 48$  years of age ( $n=153$ ) and  $<48$  years of age ( $n=146$ ), respectively. We observe that the classifier has relatively higher specificity when applied to participants at least 48 years of age. See Supplementary Table 3 for more details.



**Supplementary Table 1.** Prevalence of serum antibodies to SARS-CoV-2 by participant's questionnaire completion status and overall seroprevalence.

Questionnaire complete	Design-based seroprevalence		P value <sup>a</sup>	Adjusted seroprevalence (95%CI) <sup>b</sup>
	No (%) (n=1555)	Yes (%) (n=551)		
No (n=293)	72.1%	27.9%	0.447	28.6% (24.1%, 33.6%)
Yes (n=1813)	74.0%	26.0%		26.6% (24.8%, 28.5%)
<b>Overall (n=2106)</b>	<b>73.7%</b>	<b>26.3%</b>		26.9% (25.2%, 28.6%)

Seroprevalence estimate based on Abbott SARS-CoV-2 IgG antibody test, cutoff 1.4. Participants were aged 6+, pregnant women were excluded, and women with valid serological test results but who didn't respond to the questionnaire were assumed not to be pregnant. Tabulated proportions account for the survey design settings. 'n' counts are actual marginal observations.

<sup>a</sup> Pearson design based F(1, 2083) test for difference between proportions.

<sup>b</sup> Estimates account for the survey design settings (see Methods) and are adjusted to the serological test accuracy (sensitivity 0.9677; specificity 0.9963). 95%CI are obtained by the logit transformation.

**Supplementary Table 2.** Distribution of the 299 samples submitted to plaque reduction neutralization test (PRNT).

Quantitative variables		Min	Q1, Median, Q3	Max	Mean(SD)
Age, years		19.0	32.0, 48.0, 92.0	92.0	47.3 (18.1)
Results of Abbott IgG assay on fresh serum, S/C units		0.01	0.60, 5.75, 10.52	10.52	3.44 (2.98)
Results of Abbott IgG assay on thawed serum, S/C units		0.02	0.60, 2.67, 5.63	10.44	3.36 (2.93)
Results of Diasorin assay on thawed serum, AUs units		3.80	5.15, 26.80, 57.80	400.00	49.20 (67.96)
<b>Categorical variables</b>	<b>Level</b>	<b>n (%)</b>			
Sex	Female	140 (46.8)			
	Male	159 (53.2)			
Plate number	1	96 (32.1)			
	2	12 (4.0)			
	3	95 (31.8)			
	4	96 (32.1)			
Days between sample collection and processing	1	280 (93.6)			
	3	19 (6.4)			
Previous swab test	No	269 (90.0)			
	Yes, Negative	19 (6.4)			
	Yes, not known	2 (0.7)			
	Yes, Positive	9 (3.0)			
Previous serological test (needle or pinprick)	No	220 (73.6)			
	Yes, Negative	23 (7.7)			
	Yes, Positive	56 (18.7)			
Abbott test $\geq 1.4$ , fresh serum	Negative	105 (35.1)			
	Positive	194 (64.9)			
Abbott test $\geq 1.4$ , thawed serum	Negative	107 (35.8)			
	Positive	192 (64.2)			
Diasorin test	Negative	102 (34.1)			
	Inconclusive	7 (2.3)			
	Positive	190 (63.5)			
NT titer 50%	Negative	71 (23.7)			
	Positive	228 (76.3)			
NT titer 90%	Negative	134 (44.8)			
	Positive	165 (55.2)			

*Abbreviations:* Q1, 1<sup>st</sup> quartile; Q3, 3<sup>rd</sup> quartile; NT titer, neutralizing titer.

**Supplementary Table 3.** Discrimination accuracy of the Abbott antibody assay versus the serum neutralization capacity, by ROC curve analysis in the whole sample and in sub-groups.

Variable	Group	N <sup>a</sup>	AAI <sup>b</sup>	Sensitivity	Specificity
(none)	Whole sample	299	1.40	83.3%	92.7%
			1.16	89.0%	97.2%
Sex	Male	159	1.40	83.6%	100.0%
			1.16	91.4%	100.0%
	Female	140	1.40	83.0%	95.0%
			0.54	93.0%	90.0%
Age	<48 years	146	1.40	71.2%	97.1%
			0.36	97.3%	82.9%
	≥48 years	153	1.40	94.9%	97.2%
			1.00	97.4%	97.2%

<sup>a</sup> Number of participants in each group.

<sup>b</sup> S/C (AAI) threshold used to derive sensitivity and specificity. Corresponds to either the Abbott's suggested cutoff AAI = 1.40 (marked by a cross in the ROC curves) or to the optimal cutoff derived by ROC analysis (marked by a circle).

**Supplementary Table 4.** Prevalence of serum antibodies to SARS-CoV-2 by participant's reported chronic disease condition<sup>a</sup>.

Chronic disease	Category	N	Seroprevalence% (95% CI)	F statistic p-value <sup>b</sup>	OR (95% CI) <sup>c</sup>	p-value <sup>c</sup>
Pulmonary Disease	No	1771	26.1 (24.3; 27.9)	0.478	Ref.	0.418
	Yes	42	21.8 (12.8; 34.8)			
Cardiovascular disease	No	1740	26.0 (24.2; 27.8)	0.956	Ref.	0.744
	Yes	73	26.2 (18.3; 36.0)			
Hypertension	No	1647	26.1 (24.3; 28.0)	0.682	Ref.	0.270
	Yes	166	24.8 (19.6; 31.0)			
Kidney Disease	No	1799	25.9 (24.2; 27.8)	0.415	Ref.	0.449
	Yes	14	34.3 (16.6; 57.8)			
Autoimmune Disease	No	1792	25.9 (24.1; 27.7)	0.173	Ref.	0.098
	Yes	21	37.3 (21.6; 56.1)			
Tumor	No	1758	26.1 (24.3; 28.0)	0.519	Ref.	0.622
	Yes	55	22.7 (14.5; 33.7)			
Metabolic Disease	No	1767	26.3 (24.5; 28.1)	0.053	Ref.	0.043
	Yes	46	15.2 (8.1; 26.6)			
Liver Disease	No	1803	25.9 (24.1; 27.7)	0.034	Ref.	0.049
	Yes	10	51.6 (26.4; 75.9)			
Psychosis / Affective Disorder	No	1773	26.2 (24.4; 28.1)	0.109	Ref.	0.169
	Yes	40	16.6 (8.9; 28.8)			
Any chronic condition	No	1443	26.3 (24.3; 28.3)	0.546	Ref.	0.308
	Yes	370	24.9 (21.3; 29.0)			

<sup>a</sup> Prevalence estimate based on Abbott SARS-CoV-2 IgG antibody test, cutoff 1.4.

<sup>b</sup> Survey design adjusted F statistics.

<sup>c</sup> Odd ratios (OR) adjusted for gender, age, body mass index, smoking habit, activity-group, and municipality; 95% confidence intervals (95%CI) and p-values obtained by linearized standard errors and logit transformation.

**Supplementary Table 5.** Prevalence of serum antibodies to SARS-CoV-2 by participant's reported regular therapy<sup>a</sup>.

Therapy	Category	N	seroprevalence% (95% CI) <sup>a</sup>	F statistic p- value <sup>b</sup>	OR (95% CI) <sup>c</sup>	p-value <sup>c</sup>
Aspirin (incl. cardioaspirin)	No	1732	26.0 (24.2; 27.9)	0.888	Ref.	-
	Yes	81	25.4 (18.0; 34.5)			
Anticoagulants	No	1745	26.0 (24.2; 27.8)	0.923	Ref.	-
	Yes	68	26.4 (18.3; 36.5)			
For Hypertension	No	1611	25.9 (24.1; 27.8)	0.747	Ref.	-
	Yes	202	26.8 (21.8; 32.5)			
For cholesterol	No	1755	25.9 (24.2; 27.8)	0.750	Ref.	-
	Yes	58	27.6 (18.7; 38.6)			
For Diabetes	No	1775	26.3 (24.5; 28.1)	0.037	Ref.	-
	Yes	38	13.1 (6.2; 25.6)			
Anticancer	No	1801	26.1 (24.4; 27.9)	0.110	Ref.	-
	Yes	12	8.3 (1.5; 35.2)			
Cortisone / immunosuppr. therapy	No	1786	26.0 (24.3; 27.8)	0.910	Ref.	-
	Yes	27	25.2 (13.6; 41.8)			
Antiinflammatory (NSAIDs)	No	1726	26.1 (24.3; 27.9)	0.758	Ref.	-
	Yes	87	24.8 (17.7; 33.5)			
Sedatives, antidepressants or anti- psychotics	No	1752	26.3 (24.5; 28.2)	0.060	Ref.	-
	Yes	61	17.1 (10.5; 26.7)			
Dietary supplements	No	1613	26.2 (24.3; 28.1)	0.533	Ref.	-
	Yes	200	24.4 (19.6; 30.0)			
Any drug regularly (excl. dietary)	No	1370	26.4 (24.4; 28.6)	0.385	Ref.	-
	Yes	443	24.6 (21.3; 28.3)			

<sup>a</sup> Prevalence estimate based on Abbott SARS-CoV-2 IgG antibody test, cutoff 1.4.

<sup>b</sup> Survey design adjusted F statistics.

<sup>c</sup> Odd ratios (OR) adjusted for sex, age, body mass index, smoking habit, activity-group and municipality; 95% confidence intervals (95%CI) and p-values obtained by linearized standard errors and logit transform.

**Supplementary Table 6.** Prevalence of serum antibodies to SARS-CoV-2 by participant's questionnaire responses to prior health events, vaccinations, and post 9<sup>th</sup> March 2020 health conditions.

Health issues	Type	category	N	seroprevalence% (95% CI)	F statistic p-value <sup>a</sup>	OR (95% CI) <sup>b</sup>	p-value <sup>b</sup>
Health events	Surgical Intervention	No	1700	26.1 (24.3; 28.0)	0.259	Ref.	
		Yes	113	24.7 (18.4; 32.3)		0.80 (0.55; 1.18)	0.259
	Chemo/Radio-therapy	No	1803	26.1 (24.3; 27.9)	0.366	Ref.	
		Yes	10	10.5 (1.9; 41.6)		0.42 (0.07; 2.74)	0.366
	Organ Transplant	No	1809	26.0 (24.3; 27.8)	0.914	Ref.	
		Yes	4	22.8 (4.1; 67.1)		0.91 (0.15; 5.46)	0.914
	Respiratory allergy	No	1601	26.3 (24.4; 28.2)	0.385	Ref.	
		Yes	212	23.9 (19.2; 29.3)		0.87 (0.64; 1.19)	0.385
	Other allergy	No	1743	26.4 (24.6; 28.2)	0.112	Ref.	
		Yes	70	17.5 (10.7; 27.3)		0.61 (0.34; 1.12)	0.112
	Disautonomy	No	1796	26.1 (24.3; 27.9)	0.549	Ref.	
		Yes	17	17.7 (6.7; 39.1)		0.71 (0.23; 2.20)	0.549
	Major Health Event	No	1677	26.1 (24.3; 28.0)	0.293	Ref.	
		Yes	136	24.2 (18.5; 31.0)		0.83 (0.58; 1.18)	0.293
	Any allergy	No	1551	26.5 (24.6; 28.5)	0.247	Ref.	
		Yes	262	23.2 (19.0; 28.1)		0.84 (0.63; 1.12)	0.247
Type of vaccine	Seasonal Flu	No	1629	25.8 (24.0; 27.7)	0.528	Ref.	
		Yes	184	27.6 (22.4; 33.6)		1.06 (0.76; 1.49)	0.727
	Pneumococcus	No	1801	26.0 (24.3; 27.8)	0.855	Ref.	
		Yes	12	24.1 (9.2; 49.8)		1.15 (0.36; 3.71)	0.812
	Other vaccination	No	1723	26.3 (24.5; 28.1)	0.227	Ref.	
		Yes	90	21.0 (14.3; 29.8)		0.76 (0.46; 1.25)	0.281
	Any vaccination	No	1537	26.2 (24.3; 28.2)	0.640	Ref.	
		Yes	276	25.0 (20.8; 29.7)		0.92 (0.70; 1.22)	0.560
Post 9th March health condition	Incident / worse musculoskeletal disease	No	1716	25.2 (23.4; 27.1)	<0.001	Ref.	
		Yes	97	40.6 (32.4; 49.4)		2.00 (1.38; 2.92)	<0.001
	Incident / worse hypertension / elevated blood pressure	No	1796	25.9 (24.2; 27.7)	0.340	Ref.	
		Yes	17	34.7 (18.3; 55.7)		1.61 (0.66; 3.90)	0.292
	Incident / worse diabetes / hyperglycemia	No	1810	26.0 (24.2; 27.8)	0.604	Ref.	
		Yes	3	37.9 (6.9; 83.5)		1.70 (0.22; 13.27)	0.612
	Incident / worse cardiac disease	No	1798	26.1 (24.3; 27.9)	0.223	Ref.	
		Yes	15	13.8 (4.2; 37.1)		0.43 (0.12; 1.60)	0.209
	Incident / worse respiratory / pulmonary disease	No	1771	25.5 (23.7; 27.3)	<0.001	Ref.	
		Yes	42	46.7 (33.9; 60.0)		2.44 (1.42; 4.20)	0.001
	Incident / worse depression / phobia	No	1784	25.9 (24.1; 27.7)	0.360	Ref.	
		Yes	29	32.5 (19.6; 48.6)		1.67 (0.80; 3.52)	0.174
	Incident / worse sleep disorders	No	1721	25.4 (23.6; 27.2)	0.004	Ref.	
		Yes	92	37.6 (29.2; 46.7)		1.81 (1.21; 2.70)	0.004

<sup>a</sup> Survey design adjusted F statistics.

<sup>b</sup> Odd ratios (OR) adjusted for gender, age, body mass index, smoking habit, activity-group and municipality. 95% confidence intervals (95%CI) and p-values obtained by linearized standard errors and logit transformation.



<sup>c</sup> Major health event includes any of: surgical intervention, chemo/radio therapy, organ transplant or disautonomy.

## References

1. Pfister R, Janczyk M. schoRSch: An R package for analyzing and reporting factorial experiments. *Quant Meth Psychol* **2016**; 12(2): 147-51.
2. Lin LI. A concordance correlation coefficient to evaluate reproducibility. *Biometrics* **1989**; 45(1): 255-68.
3. Martin Bland J, Altman D. Statistical Methods for Assessing Agreement between Two Methods of Clinical Measurement. *The Lancet* **1986**; 327(8476): 307-10.