

1 **Immune response during lactation after anti-SARS-CoV2 mRNA**
2 **vaccine**

3
4 Yarden Golan, Ph.D., Mary Prah, M.D., Arianna Cassidy, M.D., Alan H.B. Wu, Ph.D., Unurzul
5 Jigmeddagva, M.D., Christine Y. Lin, Veronica J. Gonzalez, M.D, Emilia Basilio, M.D, M.P.H,
6 Lakshmi Warriar, Sirirak Buarpong, D.V.M., Ph.D., Ifeyinwa V. Asiodu, Ph.D, R.N., Nadav
7 Ahituv, Ph.D., Valerie J. Flaherman, M.D., M.P.H., Stephanie L. Gaw, M.D., Ph.D

8
9 Author Affiliations

10 From the Department of Pediatrics, University of California, San Francisco, CA, 94143 (M.P.,
11 V.J.F.), Division of Pediatric Infectious Diseases and Global Health, University of California, San
12 Francisco, CA, 94143 (M.P.), Department of Bioengineering and Therapeutic Sciences,
13 University of California, San Francisco, CA, 94158 and Institute for Human Genetics, University
14 of California, San Francisco, CA, 94158 (Y.G., N.A.), Department of Laboratory Medicine,
15 University of California, San Francisco, CA, 94143 (A.H.B.W.) Department of Medicine,
16 University of California, San Francisco, CA, 94143 (L.W.) Division of Maternal-Fetal Medicine,
17 Department of Obstetrics, Gynecology, and Reproductive Sciences, University of California San
18 Francisco, CA, 94143 (A.C., C.Y.L., V.J.G., E.B., S.L.G.). Center for Reproductive Sciences,
19 Department of Obstetrics, Gynecology, and Reproductive Sciences, University of California San
20 Francisco, CA, 94143 (U.J., S.L.G), Department of Family Health Care Nursing, University of
21 California, San Francisco, CA, 94143 (I.V.A.)

22
23 Corresponding author: Stephanie L. Gaw- Division of Maternal-Fetal Medicine, Department of
24 Obstetrics, Gynecology, and Reproductive Sciences, University of California San Francisco, 513

25 Parnassus Ave, HSE16, Box 0556, San Francisco, CA 94143. Phone: 415.476.0535. Email:

26 Stephanie.Gaw@ucsf.edu

27

28 Manuscript word count: 963 words

29

30

31 **Key Points:**

32 **Question:** What is the immunologic response to anti-COVID-19 mRNA-based vaccines during
33 lactation and does vaccination induce secretion of IgA antibodies into human milk?

34 **Findings:** In a cohort of 23 lactating individuals who were vaccinated against SARS-CoV-2, we
35 found significantly increased levels of anti-SARS-CoV2 IgG and IgM antibodies in plasma, as
36 well as anti-SARS-CoV2 IgA in human milk.

37 **Meaning:** Lactating individuals receiving anti-COVID-19 vaccines transfer antibodies to their
38 infants and given the long-term health benefits of breastfeeding for the maternal-infant dyad,
39 lactating individuals should be encouraged to continue to breastfeed after vaccination.

40

41

42 **Abstract:**

43 **Importance:** Data regarding efficacy and safety of anti-COVID-19 mRNA vaccines during
44 lactation is needed to address vaccination guidelines, ease vaccine hesitancy concerns, and
45 inform public health strategies for this population.

46 **Objective:** To determine whether anti-COVID-19 mRNA-based vaccines administered during
47 lactation elicit an immune response or the transfer of anti-SARS-CoV2 antibodies into human
48 milk.

49 **Design:** Plasma and milk samples were collected from a prospective cohort of lactating
50 individuals who received the mRNA-based vaccines for COVID-19 and from individuals who
51 recovered from COVID-19 infection.

52 **Setting:** Ambulatory or during postpartum hospitalization.

53 **Participants:** We report results from lactating participants who received the mRNA-1273
54 (Moderna, n=9) or the BNT162b2 (Pfizer, n=14) vaccine or recovered from natural SARS-CoV-2
55 infection (n=3).

56 **Interventions and Exposures:** Anti-COVID-19 mRNA vaccination (BNT-162b2 and mRNA-
57 1273) or natural SARS-CoV-2 infection.

58 **Main Outcome(s) and Measure(s):** Plasma and milk samples were collected from lactating
59 individuals before first vaccine dose, on the day of the second dose, and 4 weeks after the
60 second dose. Maternal plasma was evaluated for vaccine-derived IgM and IgG antibodies.
61 Human milk was evaluated by ELISA for vaccine-induced IgA antibodies specific for SARS-
62 CoV-2.

63 **Results:** Twenty-three lactating individuals were recruited for this study. Levels of IgG and IgM
64 were significantly increased in plasma samples on the day of the second vaccine dose (post
65 vaccine 1), when compared to pre-vaccine samples. In addition, plasma IgG levels 4 weeks
66 after second vaccine dose were significantly higher than plasma IgG levels pre-vaccine or on
67 the day of the second dose. In addition, our results show transfer of anti-SARS-CoV2-Receptor
68 Binding Domain (RBD) IgA antibodies to human milk, 3-4 weeks after each dose of the COVID-
69 19 mRNA vaccines (BNT-162b2 and mRNA-1273). The levels of anti-SARS-CoV2-RBD IgA
70 antibody in milk of vaccinated individuals were not significantly different from levels among
71 participants who experienced SARS-CoV-2 infection.

72 **Conclusions and Relevance:** Administration of anti-COVID-19 mRNA vaccines during
73 lactation leads to increased anti-SARS-CoV2 IgM and IgG levels in the plasma of lactating
74 mothers and increased anti-SARS-CoV2-RBD IgA levels in human milk. Lactating women who
75 receive the vaccine should consider continuing to breastfeed their infant human milk to allow
76 transfer of anti-SARS-CoV-2 IgA antibodies to the neonate. Additional studies are needed to
77 evaluate the effect of these vaccines on lactation outcomes and infant health.

78

79 **Introduction:**

80 Several countries have approved the use of anti-COVID-19 mRNA based vaccines under an
81 emergency use authorization¹. However, the Phase III clinical trials^{2,3} of these vaccines
82 excluded lactating individuals and therefore there is no available data on the efficacy and safety
83 of these vaccines on lactating individuals and their infants. Currently, the World Health
84 Organization (WHO) recommends lactating individuals to obtain the vaccine when eligible and
85 does not advise cessation of breastfeeding following receipt of the vaccine⁴. The Academy of
86 Breastfeeding Medicine (ABM) states that there is little plausible risk that vaccine lipid particles
87 would enter the blood stream and be present in breast tissue, and that nanoparticles or mRNA
88 would be transferred to milk⁵. We recently showed that mRNA from either the Pfizer- BioNTech
89 (BNT-162b2) or Moderna (mRNA-1273) vaccines were not detected in human milk samples
90 collected from vaccinated individuals 4-48 hours after vaccines⁶. However, despite these
91 recommendations and evidence, some mothers have declined vaccination, chosen or been
92 advised to discard their milk for up to 72 hours post vaccine, or decided to stop breastfeeding
93 earlier than planned due to the lack of solid evidence about the effect of the mRNA vaccine on
94 human milk and infant health. An important benefit of human milk is the presence of IgA
95 antibodies that provide passive immunity to the infant^{7,8}. In addition, anti-SARS-CoV2 antibodies
96 were recently shown to be present in milk from lactating women that were infected with SARS-
97 CoV2^{9,10}. However, there are no data on whether the COVID-19 mRNA vaccines induce the
98 secretion of anti-SARS-CoV-2 antibodies into human milk. Here, we show that milk samples
99 collected 3-8 weeks post BNT-162b2 and mRNA-1273 vaccination contain significantly higher
100 levels of anti-SARS-CoV2-RBD IgA antibodies when compared to pre-vaccine samples.
101 Importantly, we show significant increases in anti-SARS-CoV2 IgG and IgM levels post vaccine
102 in plasma of lactating individuals.

103

104 **Methods:**

105 The University of California San Francisco (UCSF) institutional review board approved the study
106 (20-32077, 20-30410). Informed consent was obtained from all participants. Detailed methods
107 are described in the Supplemental Materials. Briefly, maternal plasma was analysed for anti-
108 SARS-CoV-2 IgM and IgG antibodies, which were quantified through Pylon 3D automated
109 immunoassay (considered positive if ≥ 50 relative fluorescence units (RFU)). Blood samples
110 were collected up to 24 hours before first vaccine dose (n=7), up to 24 hours before second
111 dose (n=12), and 4 weeks after second vaccine dose (n=14). At similar time points, human milk
112 samples were collected fresh or frozen immediately after expressing. For some participants,
113 additional milk samples were collected weekly post vaccine. Human milk samples were assayed
114 by ELISA for IgA antibodies specific to SARS-CoV-2 RBD protein.

115 **Results:**

116 We analysed 7 pre-vaccine, 12 post first vaccine administration, and 14 post second vaccine
117 administration plasma samples from vaccinated lactating individuals. We found a significant
118 increase in anti-SARS-CoV-2 IgM and IgG antibodies post first vaccine administration and post
119 second vaccine administration, when compared to pre-vaccine samples (**Figure 1A and 1B**).
120 Furthermore, anti-SARS-CoV-2 IgG levels at 4 weeks after the second dose were significantly
121 higher (P value <0.0001) compared to samples collected at 3-4 weeks after first dose (collected
122 on the day of second dose) (**Figure 1A**). In contrast, anti-SARS-CoV-2 IgM levels were not
123 significantly higher 4 weeks after the second dose compared to samples collected after the first
124 dose (**Figure 1B**).

125 In addition, we found significantly higher levels of IgA antibodies specific to SARS-CoV-2 RBD
126 protein in human milk samples collected after the first dose of both vaccines (**Figure 2A and**
127 **2B**). Seventeen out of 19 milk samples analysed at the day of the second vaccine dose were

128 positive for anti- SARS-CoV-2 IgA antibodies. Thirteen out of the 15 milk samples that were
129 analysed 4 weeks after the second dose were positive for anti-SARS-CoV-2 RBD IgA (**Figure**
130 **2A and 2B**). We also analysed 3 milk samples collect from lactating individuals who were
131 previously infected by SARS-CoV-2 virus. Anti-SARS-CoV-2 RBD IgA antibodies levels in milk
132 samples from vaccinated individuals were not significantly different from samples collected after
133 natural SARS-CoV-2 infection (**Figure 2A and 2B**, right columns)

134 When analyzing serial samples collected from 0 to 64 days after first vaccine administration
135 from 10 patients, we found variation in anti-SARS-CoV-2 RBD IgA antibodies levels in milk
136 between individuals (**Figure 2C and 2D**). In contrast to the significant increase in plasma IgG
137 after the second dose (**Figure 1A**), milk IgA levels largely remained stable 4 weeks after the
138 second dose (**Figure 2C**).

139 **Conclusion:**

140 We show here that administration of anti-COVID-19 mRNA vaccines during lactation leads to a
141 significant increase in anti-SARS-CoV2 IgM and IgG levels in the plasma. Consistent with
142 results from previous studies that showed reduced IgM levels 28 days after COVID-19
143 infection,¹¹ our results show that IgM levels 4 weeks post second dose administration were not
144 significantly higher compared to their levels after the first dose. Furthermore, our data clearly
145 demonstrate increased anti-SARS-CoV2-RBD IgA levels in human milk consistent with levels
146 found after SARS-CoV-2 infection. Taken together, our findings suggest that anti-COVID-19
147 vaccination is beneficial for lactating individuals and may also protect their infants.

148 Our results provide information needed to inform the care of lactating individuals and their
149 infants¹². Although there is expert consensus of minimal or no potential risk for the infant from
150 maternal anti-COVID-19 vaccination^{13,14}, no previous studies have demonstrated specific
151 benefits during lactation. Our results now provide such evidence. Future studies are needed to

152 determine the degree of protection conferred by these IgA anti-SARS-CoV-2 antibodies. At the
153 present time, our findings suggest that lactating individuals who receive vaccination should
154 continue to breastfeed and chestfeed their infants in order to ensure transfer of anti-SARS-CoV-
155 2 IgA antibodies to their baby that may potentially protect against COVID-19, important even
156 during infancy¹⁵. Health care providers should continue to encourage lactating individuals to
157 breastfeed and chestfeed their infant during and following COVID-19 vaccination.

158

159

160 **References:**

- 161 1. Krause PR, Gruber MF. Emergency Use Authorization of Covid Vaccines — Safety and
162 Efficacy Follow-up Considerations. *N Engl J Med*. 2020;383(19):e107.
163 doi:10.1056/nejmp2031373
- 164 2. Polack FP, Thomas SJ, Kitchin N, et al. Safety and Efficacy of the BNT162b2 mRNA
165 Covid-19 Vaccine. *N Engl J Med*. 2020;383(27):2603-2615.
166 doi:10.1056/NEJMoa2034577
- 167 3. Baden LR, El Sahly HM, Essink B, et al. Efficacy and Safety of the mRNA-1273 SARS-
168 CoV-2 Vaccine. *N Engl J Med*. December 2020. doi:10.1056/nejmoa2035389
- 169 4. The Moderna COVID-19 (mRNA-1273) vaccine: what you need to know.
170 [https://www.who.int/news-room/feature-stories/detail/the-moderna-covid-19-mrna-1273-](https://www.who.int/news-room/feature-stories/detail/the-moderna-covid-19-mrna-1273-vaccine-what-you-need-to-know)
171 [vaccine-what-you-need-to-know](https://www.who.int/news-room/feature-stories/detail/the-moderna-covid-19-mrna-1273-vaccine-what-you-need-to-know). Accessed February 13, 2021.
- 172 5. ABM Statement: Considerations for COVID-19 Vaccination in Lactation.
173 [https://abm.memberclicks.net/abm-statement-considerations-for-covid-19-vaccination-in-](https://abm.memberclicks.net/abm-statement-considerations-for-covid-19-vaccination-in-lactation)
174 [lactation](https://abm.memberclicks.net/abm-statement-considerations-for-covid-19-vaccination-in-lactation). Accessed February 13, 2021.
- 175 6. Golan Y, Prah M, Cassidy A, et al. COVID-19 mRNA vaccine is not detected in human
176 milk. *medRxiv*. March 2021:2021.03.05.21252998. doi:10.1101/2021.03.05.21252998
- 177 7. Labayo HKM, Pajuelo MJ, Tohma K, et al. Norovirus-specific immunoglobulin A in breast
178 milk for protection against norovirus-associated diarrhea among infants.
179 *EClinicalMedicine*. 2020;27:100561. doi:10.1016/j.eclinm.2020.100561
- 180 8. Sadeharju K, Knip M, Virtanen SM, et al. Maternal antibodies in breast milk protect the

- 181 child from enterovirus infections. *Pediatrics*. 2007;119(5):941-946.
182 doi:10.1542/peds.2006-0780
- 183 9. Fox A, Marino J, Amanat F, et al. Robust and Specific Secretory IgA Against SARS-CoV-
184 2 Detected in Human Milk. 2020. doi:10.1016/j.isci.2020.101735
- 185 10. Demers-Mathieu V, Dung M, Mathijssen GB, et al. Difference in levels of SARS-CoV-2
186 S1 and S2 subunits- and nucleocapsid protein-reactive SIgM/IgM, IgG and SIgA/IgA
187 antibodies in human milk. *J Perinatol*. September 2020:1-10. doi:10.1038/s41372-020-
188 00805-w
- 189 11. Liu X, Wang J, Xu X, Liao G, Chen Y, Hu CH. Patterns of IgG and IgM antibody response
190 in COVID-19 patients. *Emerg Microbes Infect*. 2020;9(1):1269-1274.
191 doi:10.1080/22221751.2020.1773324
- 192 12. Adhikari EH, Spong CY. COVID-19 Vaccination in Pregnant and Lactating Women.
193 *JAMA*. February 2021. doi:10.1001/jama.2021.1658
- 194 13. STAFFORD IA, PARCHEM JG, SIBAI BM. The COVID-19 vaccine in pregnancy: risks
195 benefits and recommendations. *Am J Obstet Gynecol*. January 2021.
196 doi:10.1016/j.ajog.2021.01.022
- 197 14. Craig AM, Hughes BL, Swamy GK. Coronavirus disease 2019 vaccines in pregnancy. *Am*
198 *J Obstet Gynecol MFM*. 2021;3(2):100295. doi:10.1016/j.ajogmf.2020.100295
- 199 15. Bhuiyan MU, Stiboy E, Hassan MZ, et al. Epidemiology of COVID-19 infection in young
200 children under five years: A systematic review and meta-analysis. *Vaccine*.
201 2021;39(4):667-677. doi:10.1016/j.vaccine.2020.11.078

202 **Conflict of interest:**

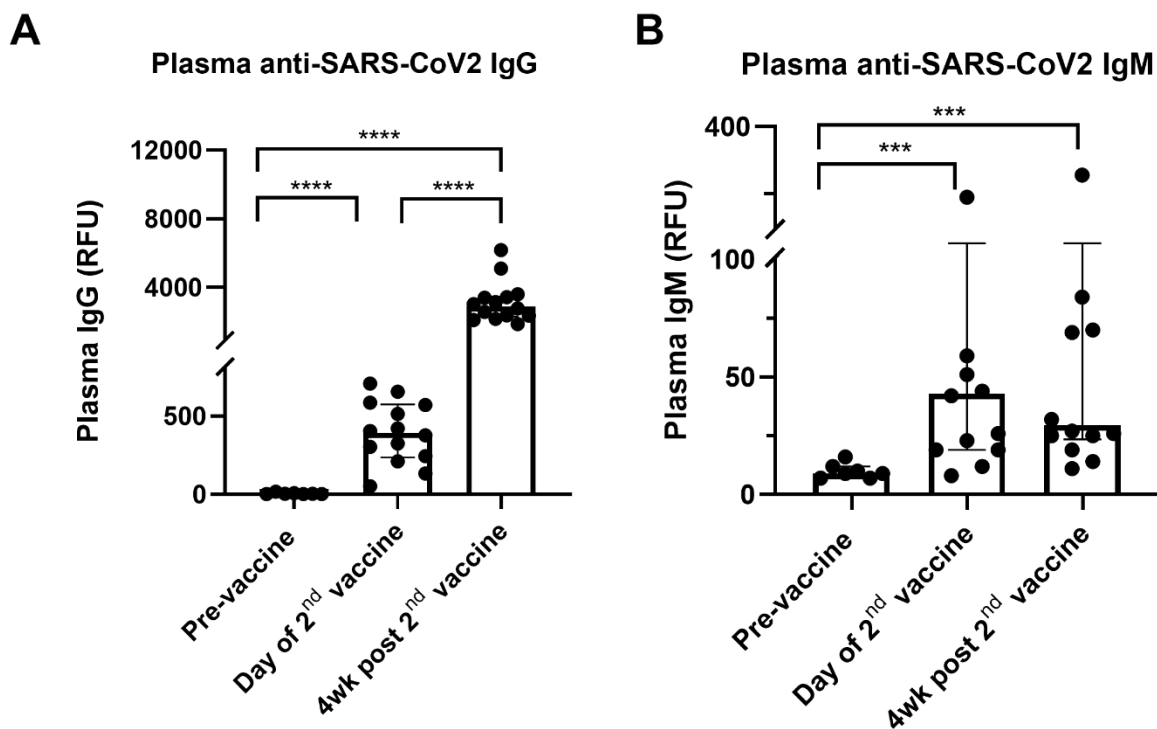
203 The authors declare no conflicts of interest.

204 **Funding:**

205 These studies were supported by the Marino Family Foundation (to M.P), the Bill and Melinda
206 Gates Foundation (INV-017035 to S.L.G and V.J.F.), the National Institutes of Health (NIAID
207 K23AI127886 to M.P. and NIAID K08AI141728 to S.L.G.), the Weizmann Institute of Science -
208 National Postdoctoral Award Program for Advancing Women in Science (to Y.G.), the
209 International Society for Research In Human Milk and Lactation (ISRHML) Trainee Bridge Fund
210 (to Y.G.), and of the Human Frontier Science Program (to Y.G.).

211

212 **Figure and legend:**



213

214

215 **Figure 1: Elevated levels of plasma anti-SARS-CoV2 antibodies in COVID-19 mRNA**

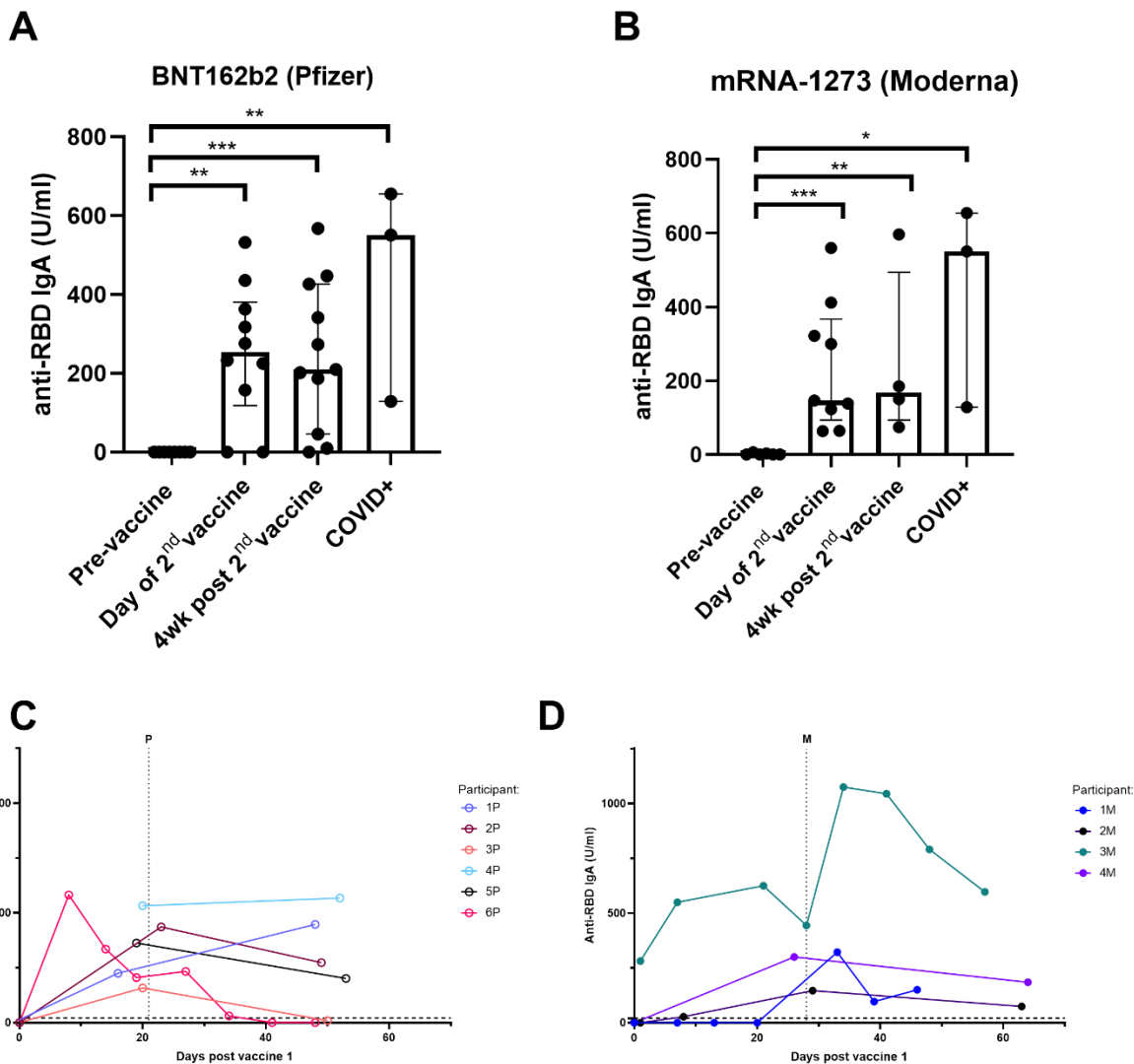
216 **vaccinated lactating individuals.** Anti-SARS-CoV2 IgG (A) and IgM (B) levels in plasma of

217 lactating individuals post COVID-19 mRNA vaccine (n=18, RFU- relative fluorescent units,

218 positive cut-off >50 RFU-relative fluorescent units). Asterisks represents p-values: *= p-value

219 <0.05, **= p-value <0.01, ***= <0.001, ****= <0.0001 as determined by unpaired Mann-Whitney

220 test.



221

222 **Figure 2: Elevated levels of milk anti-SARS-CoV2 IgA antibodies in COVID-19**
 223 **mRNA vaccinated lactating individuals.** Milk samples from individuals receiving BNT-
 224 162b2 (n=14) (A) and mRNA-1273 (n=9) (B) anti-COVID-19 vaccines were analysed for
 225 anti-SARS-CoV2 IgA antibodies using ELISA. Asterisks represents p-values: *= p-value
 226 <0.05, **= p-value <0.01, ***= <0.001 as determined by unpaired Mann-Whitney test.
 227 Anti-SARS-CoV2 IgA antibodies levels in milk at serial time points post first BNT-162b2
 228 (C) and mRNA-1273 (D) vaccine dose administration. Dashed vertical lines represent

229 the timing of the second dose administration (P- BNT-162b2, M- mRNA-1273). Dashed
230 horizontal lines represent 21.4 U/mL, values above this line were considered positive.
231 Sample identification by participant number and type of vaccine observed (P- BNT-
232 162b2, M- mRNA-1273). Note: first sample from M3 obtained 24h post first vaccine.