

Supplement to: Hospitalisation rates differed by city district and ethnicity during the first wave of COVID-19 in Amsterdam, the Netherlands

Liza Coyer*, Elke Wynberg¹*, Marcel Buster, Camiel Wijffels, Maria Prins, Anja Schreijer, Yvonne T.H.P van Duijnhoven, Alje van Dam, Mariken van der Lubben, Tjalling Leenstra

*Contributed equally

Content	Page
Figure 1. COVID-19 notifications from 29 February until 31 May 2020 by notification date, stratified by hospitalisation status, Amsterdam, the Netherlands	2
Figure 2. Flowchart depicting COVID-19 cases notified in the municipality of Amsterdam between 29 February and 31 May 2020, and linkage of notification data with municipality registration data, the Netherlands	3
Figure 3. Cumulative hospitalisation rate per 100,000 population in Amsterdam over week of symptom onset between 29 February and 31 May 2020 among those matched with the municipal registration database, by binary representation of city districts	4
Figure 4. Crude and standardised hospitalisation rates per 100,000 population by migration background and city district in the municipality of Amsterdam between 29 February and 31 May 2020	5
Table 1. Characteristics of COVID-19 cases who could and could not be matched to the municipality registration database in Amsterdam, the Netherlands, 29 February to 31 May 2020	6
Table 2. Hospitalisation rates by city district among those linked to the registration database, Amsterdam, the Netherlands, 29 February to 31 May 2020	7
Table 3. Hospitalisation rates by migration background (first and second generation combined) among those linked to the registration database, Amsterdam, the Netherlands, 29 February to 31 May 2020	8
Table 4. Hospitalisation rates by migration history (first and second generation combined) among those aged <60 years linked to the registration database, Amsterdam, the Netherlands, 29 February to 31 May 2020	9
Table 5. Hospitalisation rates by migration history (first and second generation combined) among those aged ≥60 years linked to the registration database, Amsterdam, the Netherlands, 29 February to 31 May 2020	10
Table 6. Associations with COVID-19 related hospitalization, obtained from a Poisson model with interaction term between migration background / city district, Amsterdam, the Netherlands, 29 February to 31 May 2020	11

Figure S1. COVID-19 notifications from 29 February until 31 May 2020 by notification date, stratified by hospitalisation status, Amsterdam, the Netherlands

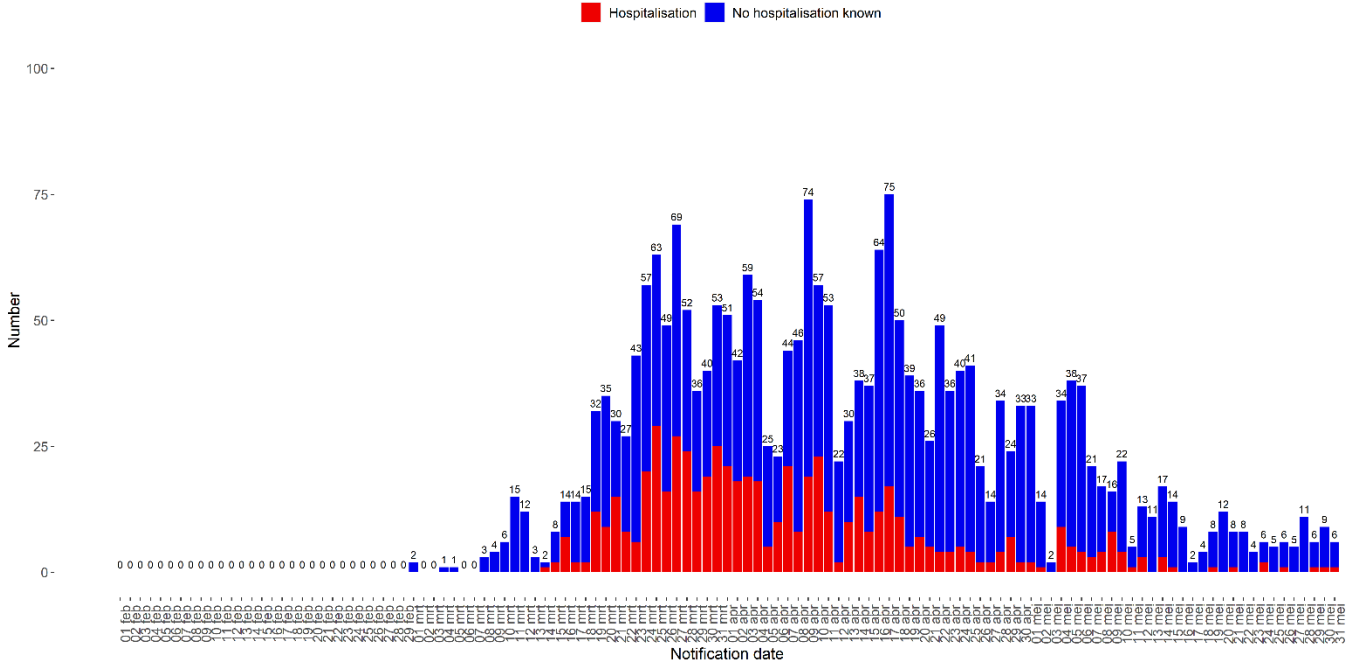


Figure S2. Flowchart depicting COVID-19 cases notified in the municipality of Amsterdam between 29 February and 31 May 2020, and linkage of notification data with municipality registration data, the Netherlands

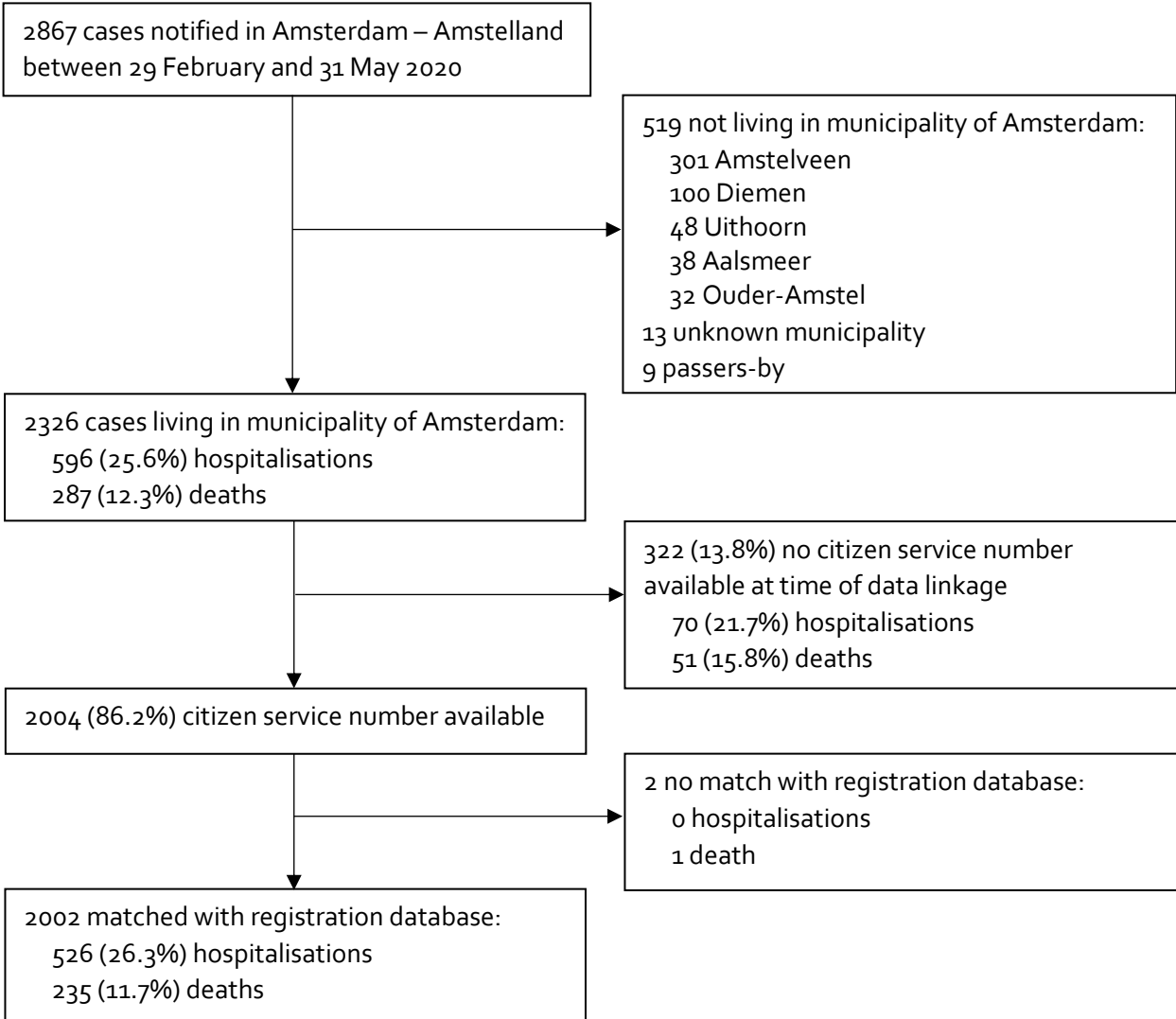


Figure S3. Cumulative hospitalisation rate per 100,000 population in Amsterdam over week of symptom onset between 29 February and 31 May 2020 among those matched with the municipal registration database, by binary representation of city districts

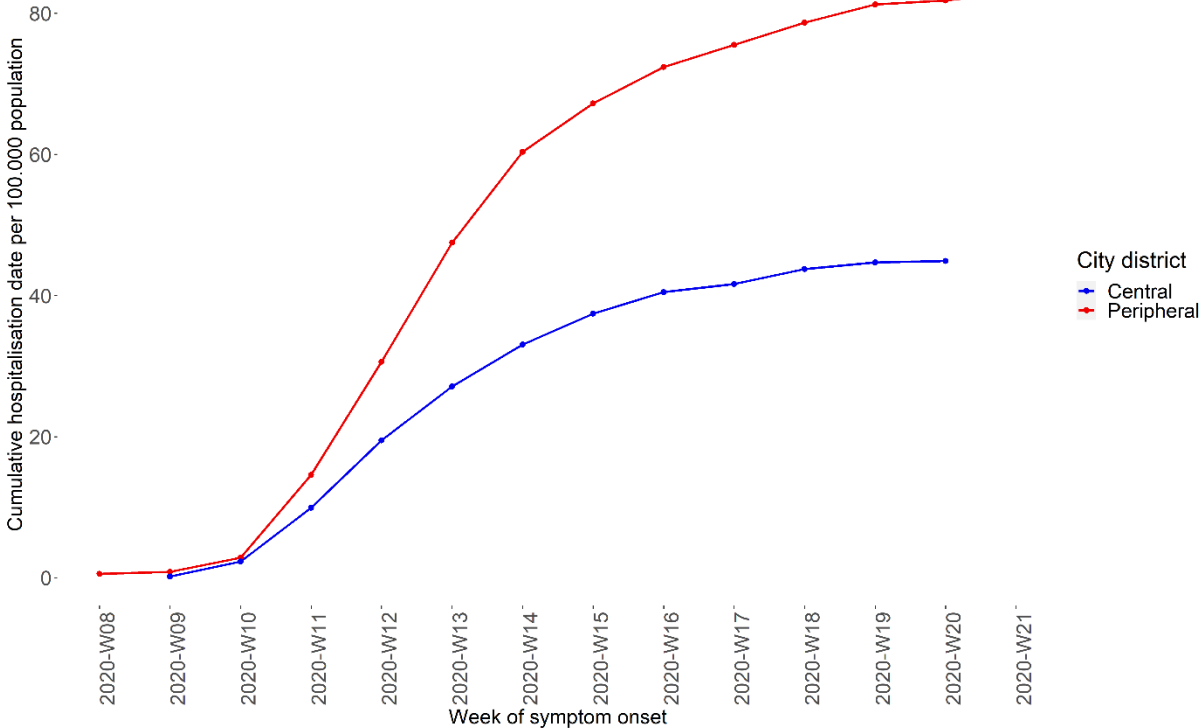


Figure S4: Crude and standardised hospitalisation rates per 100,000 population by migration background and city district in the municipality of Amsterdam between 29 February and 31 May 2020

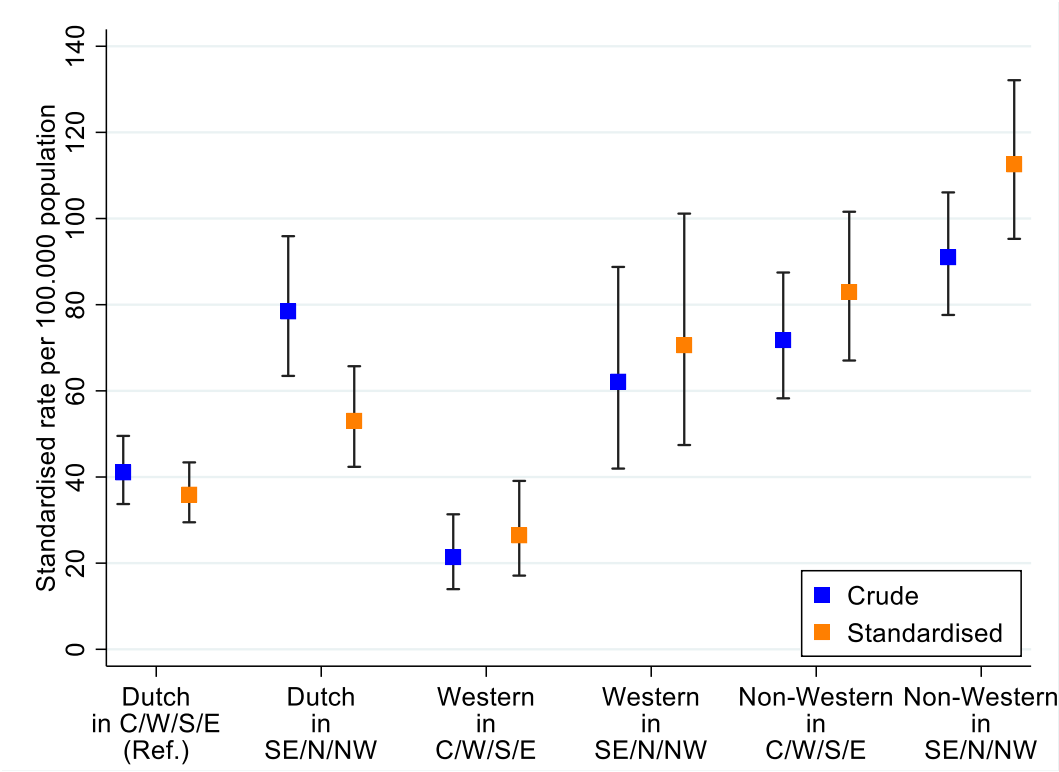


Table S1. Characteristics of COVID-19 cases who could and could not be matched to the municipality registration database in Amsterdam, the Netherlands, 29 February to 31 May 2020

Characteristic	Total (N=2326)		Matched (n=2002)		Not matched (n=324)	
	n	%	n	%	n	%
Age in years, median [IQR]	57	[37-74]	56	[37-73]	62	[44-80]
Sex						
Female	1346	57.9	1181	59.0	165	50.9
Male	965	41.5	809	40.4	156	48.2
Unknown	15	0.6	12	0.6	3	0.9
Health care worker (HCW)						
No	1108	47.6	934	46.7	174	53.7
Yes	814	35.0	739	46.7	75	23.2
HCW not in a long-term care facility/unknown location	500	61.4	451	61.0	49	65.4
HCW in a long-term care facility	314	38.6	288	39.0	26	34.6
Unknown	404	17.3	329	16.4	75	23.2
Resident of a long-term care facility						
No/unknown	1867	80.3	1673	83.6	194	59.9
Yes	459	19.7	329	16.4	130	40.1
City district						
Centre	162	7.0	141	7.0	21	6.5
New-West	433	18.6	360	18.0	73	22.5
North	268	11.5	239	12.0	29	9.0
East	377	16.2	330	16.5	47	14.5
West	341	14.7	293	14.6	48	14.8
South	350	15.1	312	15.6	38	11.7
South-East	355	15.3	320	16.0	45	10.8
Unknown	40	1.7	7	0.4	33	10.2
Hospitalised						
No/unknown	1730	74.4	1476	73.7	254	78.4
Yes	596	25.6	526	26.3	70	21.6
Died						
No/unknown	2039	87.7	1767	88.3	272	84.0
Yes	287	12.3	235	11.7	52	16.1

Abbreviations: IQR, interquartile range

Table S2. Hospitalisation rates by city district among those linked to the registration database, Amsterdam, the Netherlands, 29 February to 31 May 2020

	Hospital admissions (n)	Population ^a	Crude rate per 100,000 population (95% CI)	Standardised rate per 100,000 population ^b (95% CI)	Standardised rate difference (95% CI)	Standardised rate ratio (95% CI)
Total ^c	523	873,055	59.90 (54.88-65.27)			
City district						
Centre	29	872,23	33.25 (22.27-47.75)	26.78 (17.89-38.54)	Ref.	Ref.
New-West	109	160,115	68.08 (55.90-82.12)	70.59 (57.93-85.2)	43.81 (27.29-60.32)	2.64 (2.22-3.05)
North	79	99,705	79.23 (62.73-98.75)	73.12 (57.72-91.36)	46.34 (27.31-65.37)	2.73 (2.30-3.16)
East	58	142,011	40.84 (31.01-52.8)	44.65 (33.82-57.85)	17.87 (2.69-33.05)	1.67 (1.22-2.12)
West	74	147,831	50.06 (39.31-62.84)	57.43 (44.99-72.25)	30.65 (14.20-47.09)	2.14 (1.71-2.58)
South	72	146,471	49.16 (38.46-61.9)	45.65 (35.65-57.58)	18.86 (4.41-33.31)	1.70 (1.27-2.14)
South-East	101	89,699	112.60 (91.71-136.82)	109.92 (89.32-133.85)	83.14 (59.35-106.92)	4.10 (3.69-4.52)

^a Population on 1 April 2020

^b Standardised for age (in 15-year groups) and gender, using the total population of Amsterdam as the standard population

^c 3 matched cases had missing data

Table S3. Hospitalisation rates by migration history (first and second generation combined) among those linked to the registration database, Amsterdam, the Netherlands, 29 February to 31 May 2020

	Hospital admissions	Population ^a	Crude rate per 100,000 population (95% CI)	Standardised rate per 100,000 population ^b (95% CI)	Standardised rate difference (95% CI)	Standardised rate ratio (95% CI)
Total ^c	523	873,055	59.90 (54.88-65.27)			
Migration background						
Netherlands Antilles	10	12,126	82.47 (39.55-151.66)	76.75 (36.79-141.19)	34.71 (-13.24-82.67)	1.83 (1.19-2.46)
Morocco	67	77,213	86.77 (67.25-110.2)	109.64 (84.08-140.53)	67.60 (39.71-95.5)	2.61 (2.32-2.89)
Surinam	78	63,944	121.98 (96.42-152.24)	106.61 (83.8-133.71)	64.57 (39.69-89.46)	2.54 (2.27-2.8)
Turkey	41	44,417	92.31 (66.24-125.22)	129.35 (90.48-179.27)	87.31 (44.51-130.11)	3.08 (2.72-3.43)
Ghana	17	12,883	131.96 (76.87-211.28)	178.79 (52.99-438.28)	136.75 (-29.83-303.33)	4.25 (3.31-5.19)
Other non-Western	49	106,137	46.17 (34.15-61.03)	67.34 (47.20-93.15)	25.3 (2.58-48.01)	1.60 (1.25-1.96)
Total non-Western	262	316,720	82.72 (73.01-93.37)	99.08 (87.08-112.28)	57.05 (43.34-70.75)	2.36 (2.17-2.54)
Total Western	57	169,814	33.57 (25.42-43.49)	41.06 (30.96-53.4)	-0.98 (-13.28-11.32)	0.98 (0.68-1.27)
Dutch	204	386,521	52.78 (45.78-60.54)	42.04 (36.38-48.32)	Ref.	Ref.

^a Population on 1 April 2020

^b Standardised for age (in 15-year groups) and gender, using the total population of Amsterdam as the standard population

^c 3 matched cases had missing data

Table S4. Hospitalisation rates by migration history (first and second generation combined) among those aged <60 years linked to the registration database, Amsterdam, the Netherlands, 29 February to 31 May 2020

	Hospital admissions	Population ^a	Crude rate per 100,000 population (95% CI)	Standardised rate per 100,000 population ^b (95% CI)	Standardised rate difference (95% CI)	Standardised rate ratio (95% CI)
Total	197	715,610	27.53 (23.82-31.65)			
Migration background						
Netherlands Antilles	3	10,044	29.87 (6.16-87.29)	28.83 (5.94-84.25)	13.64 (-19.27-46.55)	1.90 (0.73-3.07)
Morocco	36	68,124	52.84 (37.01-73.16)	59.92 (41.94-83)	44.74 (24.65-64.82)	3.95 (3.51-4.38)
Surinam	34	49,825	68.24 (47.26-95.36)	59.79 (40.98-84.26)	44.6 (23.53-65.67)	3.94 (3.49-4.39)
Turkey	19	39,898	47.62 (28.67-74.37)	47 (28.28-73.42)	31.81 (10.22-53.4)	3.09 (2.56-3.63)
Ghana	7	11,056	63.31 (25.46-130.45)	48.14 (18.95-100.46)	32.95 (-3.64-69.54)	3.17 (2.36-3.98)
Other non-Western	30	96,978	30.93 (20.87-44.16)	33.38 (22.39-47.89)	18.2 (5.32-31.07)	2.20 (1.74-2.66)
Total non-Western	129	275,925	46.75 (39.03-55.55)	48.3 (40.32-57.39)	33.11 (23.71-42.52)	3.18 (2.85-3.52)
Total Western	21	146,910	14.29 (8.85-21.85)	14.83 (9.12-22.79)	-0.36 (-8.12-7.40)	0.98 (0.46-1.5)
Dutch	47	292,775	16.05 (11.8-21.35)	15.19 (11.14-20.22)	Ref.	Ref.

^a Population on 1 April 2020

^b Standardised for age (in 15-year groups) and gender, using the total population of Amsterdam as the standard population

Table S5. Hospitalisation rates by migration history (first and second generation combined) among those aged ≥60 years linked to the registration database, Amsterdam, the Netherlands, 29 February to 31 May 2020

	Hospital admissions	Population ^a	Crude rate per 100,000 population (95% CI)	Standardised rate per 100,000 population ^b (95% CI)	Standardised rate difference (95% CI)	Standardised rate ratio (95% CI)
Total	326	157,445	207.06 (185.19-230.8)			
Migration background						
Netherlands Antilles	7	2,082	336.22 (135.18-692.73)	221.84 (89.13-457.24)	34.03 (-133.26-201.32)	1.18 (0.42-1.94)
Morocco	31	9,089	341.07 (231.74-484.12)	369.25 (235.99-550.51)	181.44 (29.8-333.09)	1.97 (1.53-2.4)
Surinam	44	14,119	311.64 (226.44-418.36)	309.29 (212.07-435.76)	121.49 (10.58-232.39)	1.65 (1.27-2.03)
Turkey	22	4,519	486.83 (305.1-737.07)	537.6 (306.7-874.28)	349.8 (83.8-615.8)	2.86 (2.34-3.38)
Ghana	10	1,827	547.35 (262.47-1006.59)	993.63 (94.21-3901.41)	805.83 (-675.28-2286.93)	5.29 (3.79-6.79)
Other non-Western	19	9,159	207.45 (124.9-323.95)	256.7 (127.5-460.89)	68.89 (-86.81-224.59)	1.37 (0.75-1.98)
Total non-Western	133	40,795	326.02 (272.97-386.37)	344.08 (278.02-421.12)	156.27 (80.16-232.39)	1.83 (1.57-2.09)
Total Western	36	22,904	157.18 (110.09-217.6)	180.69 (122.95-256.16)	-7.12 (-77.59-63.35)	0.96 (0.57-1.35)
Dutch	157	93,746	167.47 (142.3-195.82)	187.81 (158.26-221.27)	Ref.	Ref.

^a Population on 1 April 2020

^b Standardised for age (in 15-year groups) and gender, using the total population of Amsterdam as the standard population

Table S6. Associations with COVID-19 related hospitalization, obtained from a Poisson model with interaction term between migration background / city district, Amsterdam, the Netherlands, 29 February to 31 May 2020

Factor	RR (95% CI)	P-value	
Migration background			Likelihood ratio test P-value this model vs. model without interaction term = 0.08
None (ethnic-Dutch)	1		
Western	0.74 (0.47-1.11)	0.16	
Non-Western	2.33 (1.77-3.06)	<0.001	
City district			
Central (C/W/S/E)	1		
Peripheral (SE/N/NW)	1.49 (1.13-1.96)	0.005	
Migration * district term			
Peripheral/ethnic-Dutch	1		
Peripheral/Western	1.78 (0.99-3.24)	0.06	
Peripheral/Non-Western	0.92 (0.63-1.34)	0.66	
Sex			
Male	1		
Female	0.59 (0.49-0.7)	<0.001	
Age			
<45 years	1		
45-59 years	4.96 (3.74-6.61)	<0.001	
60-74 years	13.49 (10.45-17.59)	<0.001	
≥75 years	23.63 (17.75-31.62)	<0.001	