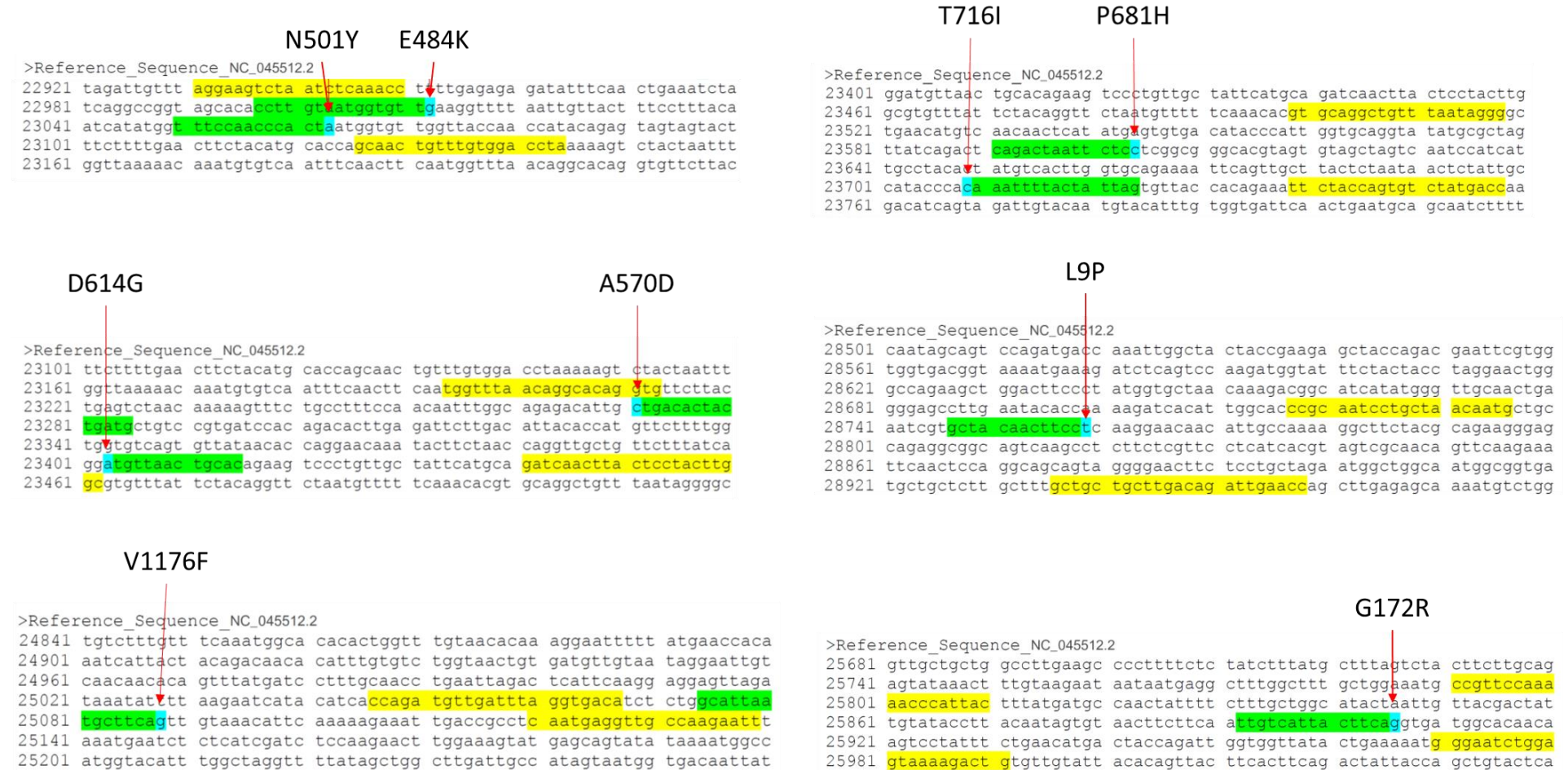
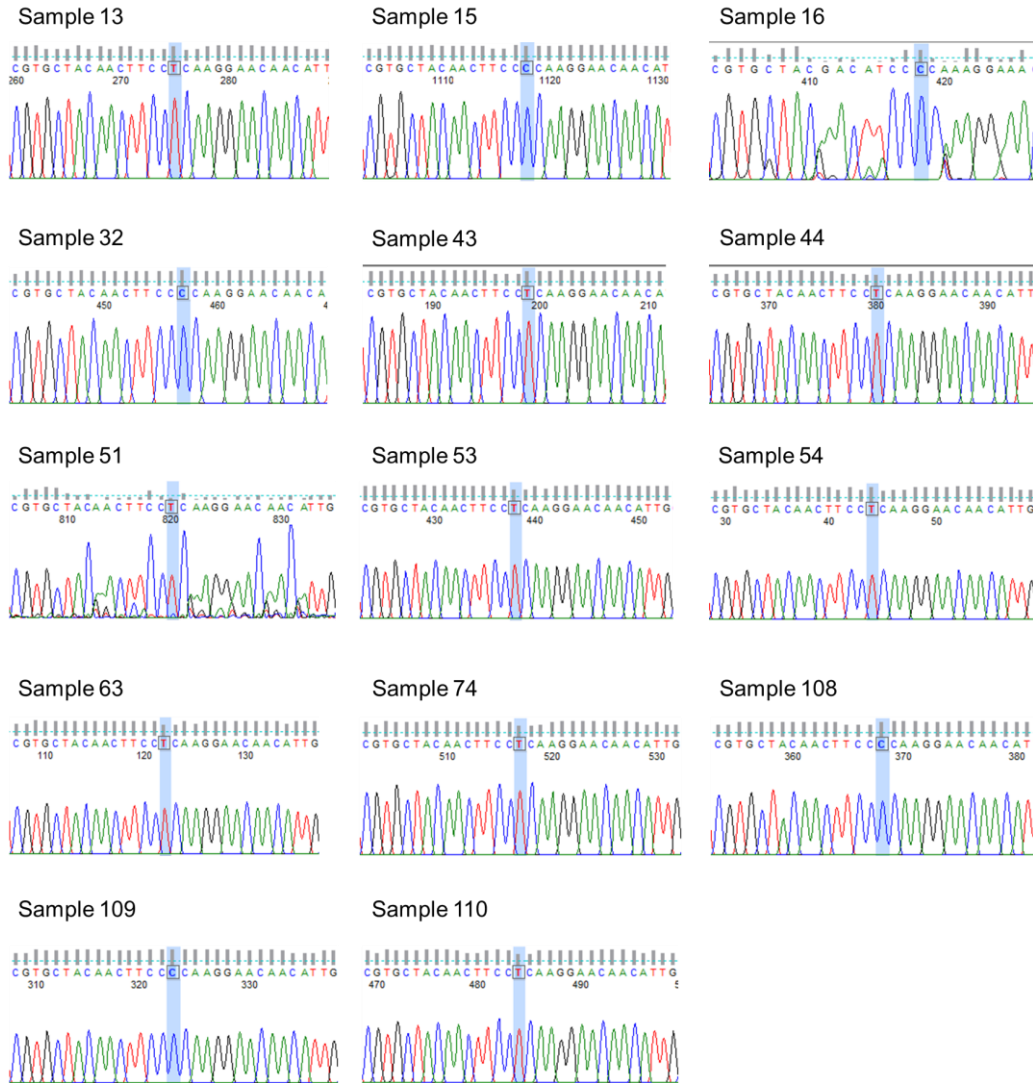


Supplementary Figure 1: SIRPH Primer design for PCR (yellow) and SNUPE (green). Potentially mutated sites are marked in blue. Primer sequences are listed in Sup. Table 1.



Supplementary Figure 2: Exemplary results of Sanger sequencing for potentially mutated sites L9P (marked in blue).



Supplementary Table 1: Primers for mutation screening via PCR and SNuPE. SNuPE primers are printed in bold.

N501Y+E484K F	5'-AGGAAGTCTAATCTCAAACC-3'
N501Y+E484K R	5'-TAGGTCCACAAACAGTTGC-3'
E484K nt23012	5'-CCTTGTAAATGGTGTT-3'
N501Y nt23063	5'-TTTCCAACCCACT-3'
A570D+D614G F	5'-TGGTTTAACAGGCACAGGTG-3'
A570D+D614G R	5'-GCCAAGTAGGAGTAAGTTGATC-3'
A570D nt23271	5'-CATCAGTAGTGTCA-3'
D614G nt23403	5'-GTGCAGTTAACA-3'
P681H+T716I F	5'-GTGCAGGCTGTTTAATAGGG-3'
P681H+T716I R	5'-GGTCATAGACACTGGTAGAA-3'
P681H nt23604	5'-CAGACTAATTCTC-3'
T716I nt23709	5'-CTAATAGTAAAATTT-3'
L9P F	5'-CCGCAATCCTGCTAACAATG-3'
L9P R	5'-GGTTCAATCTGTCAAGCAGCAGC-3'
L9P nt28759	5'-GCTACAACCTCC-3'
G172R F	5'-CCGTTCCAAAAACCCATTAC-3'
G172R R	5'-CAGTCTTTTACTCCAGATTCCC-3'
G172R nt25906	5'-TTGTCATTAATTCA-3'

Supplementary Table 2: Acetonitril gradients for HPLC separation of SNUPE products.

N501Y+E484K	29-35% buffer B over 10 min
A570D	27-34% buffer B over 8 min
D614G	27-32% buffer B over 8 min
P681H+T716I	28-35% buffer B over 13 min
L9P+G172R	27-38% buffer B over 12 min

Supplementary Table 3: Artic multiplex PCR primers for SARS-CoV-2 genome sequencing adapted for Illumina. Low coverage regions were amplified in a separate pool (Pool 3) to obtain a more equal sequencing depth across the genome.

COVID19_1_F	TCTTCCCTACACGACGCTCTCCGATCTACCAACCAACTTCGATCTCTTGT	Pool 1
COVID19_1_R	GTGACTGGAGTTCAGACGTGTGCTCTTCCGATCTCATCTTTAAGATGTTGACGTGCCTC	Pool 1
COVID19_2_F	TCTTCCCTACACGACGCTCTCCGATCTCTGTTTTACAGGTCGCGACGT	Pool 2
COVID19_2_R	GTGACTGGAGTTCAGACGTGTGCTCTTCCGATCTTAAGGATCAGTGCCAAGCTCGT	Pool 2
COVID19_3_F	TCTTCCCTACACGACGCTCTCCGATCTCGGTAATAAAGGAGCTGGTGCC	Pool 1
COVID19_3_R	GTGACTGGAGTTCAGACGTGTGCTCTTCCGATCTAAGGTGTCTGCAATTCATAGCTCT	Pool 1
COVID19_4_F	TCTTCCCTACACGACGCTCTCCGATCTGGTGTATACTGCTGCCGTGAAC	Pool 2
COVID19_4_R	GTGACTGGAGTTCAGACGTGTGCTCTTCCGATCTCAACAAGTAGTGGCACCTTTAGT	Pool 2
COVID19_5_F	TCTTCCCTACACGACGCTCTCCGATCTTGGTGAACTTCATGGCAGACG	Pool 1

COVID19_5_R	GTGACTGGAGTTCAGACGTGTGCTCTTCCGATCTATTGATGTTGACTTTCTCTTTTTGGAGT	Pool 1
COVID19_6_F	TCTTTCCCTACACGACGCTCTTCCGATCTGGTGTGTTGGAGAAGGTTCCG	Pool 2
COVID19_6_R	GTGACTGGAGTTCAGACGTGTGCTCTTCCGATCTTAGCGGCCTTCTGTAAAACACG	Pool 2
COVID19_7_F	TCTTTCCCTACACGACGCTCTTCCGATCTATCAGAGGCTGCTCGTGTGTA	Pool 1
COVID19_7_F_alt0	TCTTTCCCTACACGACGCTCTTCCGATCTCATTTGCATCAGAGGCTGCTCG	Pool 1
COVID19_7_R	GTGACTGGAGTTCAGACGTGTGCTCTTCCGATCTTGACAGGTGACAATTTGTCCA	Pool 1
COVID19_7_R_alt5	GTGACTGGAGTTCAGACGTGTGCTCTTCCGATCTAGGTGACAATTTGTCCACCGAC	Pool 1
COVID19_8_F	TCTTTCCCTACACGACGCTCTTCCGATCTAGAGTTTCTTAGAGACGGTTGGGA	Pool 3
COVID19_8_R	GTGACTGGAGTTCAGACGTGTGCTCTTCCGATCTGCTTCAACAGCTTCACTAGTAGGT	Pool 3
COVID19_9_F	TCTTTCCCTACACGACGCTCTTCCGATCTTCCCACAGAAGTGTTAACAGAGGA	Pool 1
COVID19_9_F_alt4	TCTTTCCCTACACGACGCTCTTCCGATCTTCCCACAGAAGTGTTAACAGAGG	Pool 1
COVID19_9_R	GTGACTGGAGTTCAGACGTGTGCTCTTCCGATCTATGACAGCATCTGCCACAACAC	Pool 1
COVID19_9_R_alt2	GTGACTGGAGTTCAGACGTGTGCTCTTCCGATCTGACAGCATCTGCCACAACACAG	Pool 1
COVID19_10_F	TCTTTCCCTACACGACGCTCTTCCGATCTTGAGAAGTGCTCTGCCTATACAGT	Pool 2
COVID19_10_R	GTGACTGGAGTTCAGACGTGTGCTCTTCCGATCTTCATCTAACCAATCTTCTTCTGCTCT	Pool 2
COVID19_11_F	TCTTTCCCTACACGACGCTCTTCCGATCTGGAATTTGGTGCCACTTCTGCT	Pool 1
COVID19_11_R	GTGACTGGAGTTCAGACGTGTGCTCTTCCGATCTTCATCAGATTCAACTTGCATGGCA	Pool 1
COVID19_12_F	TCTTTCCCTACACGACGCTCTTCCGATCTAAACATGGAGGAGGTGTTGCAG	Pool 2
COVID19_12_R	GTGACTGGAGTTCAGACGTGTGCTCTTCCGATCTTCACTCTTCATTTCCAAAAGCTTGA	Pool 2
COVID19_13_F	TCTTTCCCTACACGACGCTCTTCCGATCTTCGCACAAATGTCTACTTAGCTGT	Pool 1
COVID19_13_R	GTGACTGGAGTTCAGACGTGTGCTCTTCCGATCTACCACAGCAGTTAAAACACCCT	Pool 1

COVID19_14_F	TCTTCCCTACACGACGCTCTCCGATCTCATCCAGATTCTGCCACTCTTGT	Pool 2
COVID19_14_F_alt4	TCTTCCCTACACGACGCTCTCCGATCTTGGCAATCTTCATCCAGATTCTGC	Pool 2
COVID19_14_R	GTGACTGGAGTTCAGACGTGTGCTCTCCGATCTAGTTTCCACACAGACAGGCATT	Pool 2
COVID19_14_R_alt2	GTGACTGGAGTTCAGACGTGTGCTCTCCGATCTTGGGTGTTTCTTCTGCATGTGC	Pool 2
COVID19_15_F	TCTTCCCTACACGACGCTCTCCGATCTACAGTGCTTAAAAAGTGAAAAGTGCC	Pool 1
COVID19_15_F_alt1	TCTTCCCTACACGACGCTCTCCGATCTAGTGCTTAAAAAGTGAAAAGTGCCT	Pool 1
COVID19_15_R	GTGACTGGAGTTCAGACGTGTGCTCTCCGATCTAACAGAAACTGTAGCTGGCACT	Pool 1
COVID19_15_R_alt3	GTGACTGGAGTTCAGACGTGTGCTCTCCGATCTACTGTAGCTGGCACTTTGAGAGA	Pool 1
COVID19_16_F	TCTTCCCTACACGACGCTCTCCGATCTAATTTGGAAGAAGCTGCTCGGT	Pool 2
COVID19_16_R	GTGACTGGAGTTCAGACGTGTGCTCTCCGATCTCACAACCTTGCCTGTGGAGGTTA	Pool 2
COVID19_17_F	TCTTCCCTACACGACGCTCTCCGATCTCTTCTTTCTTTGAGAGAAGTGAGGACT	Pool 1
COVID19_17_R	GTGACTGGAGTTCAGACGTGTGCTCTCCGATCTTTTGTGGAGTGTTAACAATGCAGT	Pool 1
COVID19_18_F	TCTTCCCTACACGACGCTCTCCGATCTTGAAAATACCCACAAGTTAATGGTTAAC	Pool 2
COVID19_18_F_alt2	TCTTCCCTACACGACGCTCTCCGATCTACTTCTATTAATGGGCAGATAACAACCTGT	Pool 2
COVID19_18_R	GTGACTGGAGTTCAGACGTGTGCTCTCCGATCTAGCTTGTTTACCACACGTACAAGG	Pool 2
COVID19_18_R_alt1	GTGACTGGAGTTCAGACGTGTGCTCTCCGATCTGCTTGTTTACCACACGTACAAGG	Pool 2
COVID19_19_F	TCTTCCCTACACGACGCTCTCCGATCTGCTGTTATGTACATGGGCACACT	Pool 1
COVID19_19_R	GTGACTGGAGTTCAGACGTGTGCTCTCCGATCTTGCCAACCTAGGGTCAATTTCTGT	Pool 1
COVID19_20_F	TCTTCCCTACACGACGCTCTCCGATCTACAAAGAAAACAGTTACACAACAACCA	Pool 2
COVID19_20_R	GTGACTGGAGTTCAGACGTGTGCTCTCCGATCTACGTGGCTTTATTAGTTGCATTGTT	Pool 2
COVID19_21_F	TCTTCCCTACACGACGCTCTCCGATCTTGGCTATTGATTATAAACACTACACACCC	Pool 1

COVID19_21_F_alt2	TCTTCCCTACACGACGCTCTCCGATCTGGCTATTGATTATAAACACTACACACCCT	Pool 1
COVID19_21_R	GTGACTGGAGTTCAGACGTGTGCTCTCCGATCTTAGATCTGTGTGGCCAACCTCT	Pool 1
COVID19_21_R_alt0	GTGACTGGAGTTCAGACGTGTGCTCTCCGATCTGATCTGTGTGGCCAACCTCTTC	Pool 1
COVID19_22_F	TCTTCCCTACACGACGCTCTCCGATCTACTACCGAAGTTGTAGGAGACATTATACT	Pool 2
COVID19_22_R	GTGACTGGAGTTCAGACGTGTGCTCTCCGATCTACAGTATTCTTTGCTATAGTAGTCGGC	Pool 2
COVID19_23_F	TCTTCCCTACACGACGCTCTCCGATCTACAACACTAACATAGTTACACGGTGT	Pool 1
COVID19_23_R	GTGACTGGAGTTCAGACGTGTGCTCTCCGATCTACCAGTACAGTAGGTTGCAATAGTG	Pool 1
COVID19_24_F	TCTTCCCTACACGACGCTCTCCGATCTAGGCATGCCTTCTTACTGTACTG	Pool 2
COVID19_24_R	GTGACTGGAGTTCAGACGTGTGCTCTCCGATCTACATTCTAACCATAGCTGAAATCGGG	Pool 2
COVID19_25_F	TCTTCCCTACACGACGCTCTCCGATCTGCAATTGTTTTTCAGCTATTTTGCAGT	Pool 1
COVID19_25_R	GTGACTGGAGTTCAGACGTGTGCTCTCCGATCTACTGTAGTGACAAGTCTCTCGCA	Pool 1
COVID19_26_F	TCTTCCCTACACGACGCTCTCCGATCTTTGTGATACATTCTGTGCTGGTAGT	Pool 2
COVID19_26_R	GTGACTGGAGTTCAGACGTGTGCTCTCCGATCTCCGCACTATCACCAACATCAG	Pool 2
COVID19_27_F	TCTTCCCTACACGACGCTCTCCGATCTACTACAGTCAGCTTATGTGTCAACC	Pool 1
COVID19_27_R	GTGACTGGAGTTCAGACGTGTGCTCTCCGATCTAATACAAGCACCAAGGTCACGG	Pool 1
COVID19_28_F	TCTTCCCTACACGACGCTCTCCGATCTACATAGAAGTACTGGCGATAGTTGT	Pool 2
COVID19_28_R	GTGACTGGAGTTCAGACGTGTGCTCTCCGATCTTGTTTAGACATGACATGAACAGGTGT	Pool 2
COVID19_29_F	TCTTCCCTACACGACGCTCTCCGATCTACTTGTGTTCCTTTTTGTGCTGC	Pool 1
COVID19_29_R	GTGACTGGAGTTCAGACGTGTGCTCTCCGATCTAGTGTACTCTATAAGTTTTGATGGTGTGT	Pool 1
COVID19_30_F	TCTTCCCTACACGACGCTCTCCGATCTGCACAACATAATGGTGACTTTTTGCA	Pool 2
COVID19_30_R	GTGACTGGAGTTCAGACGTGTGCTCTCCGATCTACCACTAGTAGATACACAAACACCAG	Pool 2

COVID19_31_F	TCTTCCCTACACGACGCTCTTCCGATCTTTCTGAGTACTGTAGGCACGGC	Pool 1
COVID19_31_R	GTGACTGGAGTTCAGACGTGTGCTCTTCCGATCTACAGAATAAACACCAGGTAAGAATGAGT	Pool 1
COVID19_32_F	TCTTCCCTACACGACGCTCTTCCGATCTTGGTGAATACAGTCATGTAGTTGCC	Pool 2
COVID19_32_R	GTGACTGGAGTTCAGACGTGTGCTCTTCCGATCTAGCACATCACTACGCAACTTTAGA	Pool 2
COVID19_33_F	TCTTCCCTACACGACGCTCTTCCGATCTACTTTTGAAGAAGCTGCGCTGT	Pool 1
COVID19_33_R	GTGACTGGAGTTCAGACGTGTGCTCTTCCGATCTTGGACAGTAAACTACGTCATCAAGC	Pool 1
COVID19_34_F	TCTTCCCTACACGACGCTCTTCCGATCTTCCCATCTGGTAAAGTTGAGGGT	Pool 2
COVID19_34_R	GTGACTGGAGTTCAGACGTGTGCTCTTCCGATCTAGTGAAATTGGGCCTCATAGCA	Pool 2
COVID19_35_F	TCTTCCCTACACGACGCTCTTCCGATCTTGTTTCGCATTCAACCAGGACAG	Pool 1
COVID19_35_R	GTGACTGGAGTTCAGACGTGTGCTCTTCCGATCTACTTCATAGCCACAAGGTAAAGTCA	Pool 1
COVID19_36_F	TCTTCCCTACACGACGCTCTTCCGATCTTTAGCTTGGTTGTACGCTGCTG	Pool 2
COVID19_36_R	GTGACTGGAGTTCAGACGTGTGCTCTTCCGATCTGAACAAAGACCATTGAGTACTCTGGA	Pool 2
COVID19_37_F	TCTTCCCTACACGACGCTCTTCCGATCTACACACCACTGGTTGTTACTCAC	Pool 1
COVID19_37_R	GTGACTGGAGTTCAGACGTGTGCTCTTCCGATCTGTCCACACTCTCCTAGCACCAT	Pool 1
COVID19_38_F	TCTTCCCTACACGACGCTCTTCCGATCTACTGTGTTATGTATGCATCAGCTGT	Pool 2
COVID19_38_R	GTGACTGGAGTTCAGACGTGTGCTCTTCCGATCTCACCAAGAGTCAGTCTAAAGTAGCG	Pool 2
COVID19_39_F	TCTTCCCTACACGACGCTCTTCCGATCTAGTATTGCCCTATTTTCTTCATAACTGGT	Pool 1
COVID19_39_R	GTGACTGGAGTTCAGACGTGTGCTCTTCCGATCTTGTAAGTGGACACATTGAGCCC	Pool 1
COVID19_40_F	TCTTCCCTACACGACGCTCTTCCGATCTTGCACATCAGTAGTCTTACTCTCAGT	Pool 2
COVID19_40_R	GTGACTGGAGTTCAGACGTGTGCTCTTCCGATCTCATGGCTGCATCACGGTCAAAT	Pool 2
COVID19_41_F	TCTTCCCTACACGACGCTCTTCCGATCTGTTCCCTCCATCATATGCAGCT	Pool 1

COVID19_41_R	GTGACTGGAGTTCAGACGTGTGCTCTTCCGATCTTGGTATGACAACCATTAGTTTGGCT	Pool 1
COVID19_42_F	TCTTTCCCTACACGACGCTCTTCCGATCTTGCAAGAGATGGTTGTGTTCCC	Pool 2
COVID19_42_R	GTGACTGGAGTTCAGACGTGTGCTCTTCCGATCTCCTACCTCCCTTTGTTGTGTTGT	Pool 2
COVID19_43_F	TCTTTCCCTACACGACGCTCTTCCGATCTTACGACAGATGTCTTGTGCTGC	Pool 1
COVID19_43_R	GTGACTGGAGTTCAGACGTGTGCTCTTCCGATCTAGCAGCATCTACAGCAAAGCA	Pool 1
COVID19_44_F	TCTTTCCCTACACGACGCTCTTCCGATCTTGCCACAGTACGTCTACAAGCT	Pool 2
COVID19_44_F_alt3	TCTTTCCCTACACGACGCTCTTCCGATCTCCACAGTACGTCTACAAGCTGG	Pool 2
COVID19_44_R	GTGACTGGAGTTCAGACGTGTGCTCTTCCGATCTAACCTTTCCACATACCGCAGAC	Pool 2
COVID19_44_R_alt0	GTGACTGGAGTTCAGACGTGTGCTCTTCCGATCTCGCAGACGGTACAGACTGTGTT	Pool 2
COVID19_45_F	TCTTTCCCTACACGACGCTCTTCCGATCTTACCTACAAC TTGTGCTAATGACCC	Pool 1
COVID19_45_F_alt2	TCTTTCCCTACACGACGCTCTTCCGATCTAGTATGTACAAATACCTACAAC TTGTGCT	Pool 1
COVID19_45_R	GTGACTGGAGTTCAGACGTGTGCTCTTCCGATCTAAATTGTTTCTTCATGTTGGTAGTTAGAGA	Pool 1
COVID19_45_R_alt7	GTGACTGGAGTTCAGACGTGTGCTCTTCCGATCTTTTCATGTTGGTAGTTAGAGAAAGTGTGTC	Pool 1
COVID19_46_F	TCTTTCCCTACACGACGCTCTTCCGATCTTGTCGCTTCCAAGAAAAGGACG	Pool 2
COVID19_46_F_alt1	TCTTTCCCTACACGACGCTCTTCCGATCTCGCTTCCAAGAAAAGGACGAAGA	Pool 2
COVID19_46_R	GTGACTGGAGTTCAGACGTGTGCTCTTCCGATCTCACGTTACCTAAGTTGGCGTA	Pool 2
COVID19_46_R_alt2	GTGACTGGAGTTCAGACGTGTGCTCTTCCGATCTCACGTTACCTAAGTTGGCGTAT	Pool 2
COVID19_47_F	TCTTTCCCTACACGACGCTCTTCCGATCTAGGACTGGTATGATTTTGTAGAAAACCC	Pool 1
COVID19_47_R	GTGACTGGAGTTCAGACGTGTGCTCTTCCGATCTAATAACGGTCAAAGAGTTTAACTCTC	Pool 1
COVID19_48_F	TCTTTCCCTACACGACGCTCTTCCGATCTTGTGACACTGACTTAACAAAGCCT	Pool 2
COVID19_48_R	GTGACTGGAGTTCAGACGTGTGCTCTTCCGATCTTAGATTACCAGAAGCAGCGTGC	Pool 2

COVID19_49_F	TCTTCCCTACACGACGCTCTCCGATCTAGGAATTACTTGTGTATGCTGCTGA	Pool 1
COVID19_49_R	GTGACTGGAGTTCAGACGTGTGCTCTCCGATCTTGACGATGACTTGGTTAGCATTAAATACA	Pool 1
COVID19_50_F	TCTTCCCTACACGACGCTCTCCGATCTGTTGATAAGTACTTTGATTGTTACGATGGT	Pool 2
COVID19_50_R	GTGACTGGAGTTCAGACGTGTGCTCTCCGATCTTAACATGTTGTGCCAACCA	Pool 2
COVID19_51_F	TCTTCCCTACACGACGCTCTCCGATCTTCAATAGCCGCCACTAGAGGAG	Pool 1
COVID19_51_R	GTGACTGGAGTTCAGACGTGTGCTCTCCGATCTAGTGCATTAACATTGGCCGTGA	Pool 1
COVID19_52_F	TCTTCCCTACACGACGCTCTCCGATCTCATCAGGAGATGCCACAACCTGC	Pool 2
COVID19_52_R	GTGACTGGAGTTCAGACGTGTGCTCTCCGATCTGTTGAGAGCAAATTCATGAGGTCC	Pool 2
COVID19_53_F	TCTTCCCTACACGACGCTCTCCGATCTAGCAAAATGTTGGACTGAGACTGA	Pool 1
COVID19_53_R	GTGACTGGAGTTCAGACGTGTGCTCTCCGATCTAGCCTCATAAACTCAGGTTCCC	Pool 1
COVID19_54_F	TCTTCCCTACACGACGCTCTCCGATCTTGAGTTAACAGGACACATGTTAGACA	Pool 2
COVID19_54_R	GTGACTGGAGTTCAGACGTGTGCTCTCCGATCTAACCAAAAACCTGTCCATTAGCACA	Pool 2
COVID19_55_F	TCTTCCCTACACGACGCTCTCCGATCTACTCAACTTTACTTAGGAGGTATGAGCT	Pool 1
COVID19_55_R	GTGACTGGAGTTCAGACGTGTGCTCTCCGATCTGGTGTACTCTCCTATTTGACTTTACTGT	Pool 1
COVID19_56_F	TCTTCCCTACACGACGCTCTCCGATCTACCTAGACCACCACTTAACCGA	Pool 2
COVID19_56_R	GTGACTGGAGTTCAGACGTGTGCTCTCCGATCTACACTATGCGAGCAGAAGGGTA	Pool 2
COVID19_57_F	TCTTCCCTACACGACGCTCTCCGATCTATTCTACACTCCAGGGACCACC	Pool 1
COVID19_57_R	GTGACTGGAGTTCAGACGTGTGCTCTCCGATCTGTAATTGAGCAGGGTCGCCAAT	Pool 1
COVID19_58_F	TCTTCCCTACACGACGCTCTCCGATCTTGATTTGAGTGTGTCAATGCCAGA	Pool 2
COVID19_58_R	GTGACTGGAGTTCAGACGTGTGCTCTCCGATCTCTTTTCTCCAAGCAGGGTTACGT	Pool 2
COVID19_59_F	TCTTCCCTACACGACGCTCTCCGATCTTCACGCATGATGTTTCATCTGCA	Pool 1

COVID19_59_R	GTGACTGGAGTTCAGACGTGTGCTCTTCCGATCTAAGAGTCTGTACATTTTCAGCTTG	Pool 1
COVID19_60_F	TCTTTCCCTACACGACGCTCTTCCGATCTTGATAGAGACCTTTATGACAAGTTGCA	Pool 2
COVID19_60_R	GTGACTGGAGTTCAGACGTGTGCTCTTCCGATCTGGTACCAACAGCTTCTCTAGTAGC	Pool 2
COVID19_61_F	TCTTTCCCTACACGACGCTCTTCCGATCTTGTTTATCACCCGCGAAGAAGC	Pool 1
COVID19_61_R	GTGACTGGAGTTCAGACGTGTGCTCTTCCGATCTATCACATAGACAACAGGTGCGC	Pool 1
COVID19_62_F	TCTTTCCCTACACGACGCTCTTCCGATCTGGCACATGGCTTTGAGTTGACA	Pool 2
COVID19_62_R	GTGACTGGAGTTCAGACGTGTGCTCTTCCGATCTGTTGAACCTTTCTACAAGCCGC	Pool 2
COVID19_63_F	TCTTTCCCTACACGACGCTCTTCCGATCTTGTTAAGCGTGTGACTGGACT	Pool 1
COVID19_63_R	GTGACTGGAGTTCAGACGTGTGCTCTTCCGATCTACAAACTGCCACCATCACAACC	Pool 1
COVID19_64_F	TCTTTCCCTACACGACGCTCTTCCGATCTTCGATAGATATCCTGCTAATCCATTGT	Pool 2
COVID19_64_R	GTGACTGGAGTTCAGACGTGTGCTCTTCCGATCTAGTCTTGTAAGGTTCCAGAGGT	Pool 2
COVID19_65_F	TCTTTCCCTACACGACGCTCTTCCGATCTGCTGGCTTTAGCTTGTGGGTTT	Pool 1
COVID19_65_R	GTGACTGGAGTTCAGACGTGTGCTCTTCCGATCTTGTCAGTCATAGAACAAACACCAATAGT	Pool 1
COVID19_66_F	TCTTTCCCTACACGACGCTCTTCCGATCTGGGTGTGGACATTGCTGCTAAT	Pool 2
COVID19_66_R	GTGACTGGAGTTCAGACGTGTGCTCTTCCGATCTTCAATTTCCATTTGACTCCTGGGT	Pool 2
COVID19_67_F	TCTTTCCCTACACGACGCTCTTCCGATCTGTTGTCCAACAATTACCTGAACTTACT	Pool 3
COVID19_67_R	GTGACTGGAGTTCAGACGTGTGCTCTTCCGATCTCAACCTTAGAAACTACAGATAAACTTTGGG	Pool 3
COVID19_68_F	TCTTTCCCTACACGACGCTCTTCCGATCTACAGGTTCACTAAGTGTGTGTGT	Pool 2
COVID19_68_R	GTGACTGGAGTTCAGACGTGTGCTCTTCCGATCTCTCCTTTATCAGAACCAGCACCA	Pool 2
COVID19_69_F	TCTTTCCCTACACGACGCTCTTCCGATCTTGTCGAAAAATACTCAACTGTGTCA	Pool 1
COVID19_69_R	GTGACTGGAGTTCAGACGTGTGCTCTTCCGATCTTCTTTATAGCCACGGAACCTCCA	Pool 1

COVID19_70_F	TCTTTCCCTACACGACGCTCTTCCGATCTACAAAAGAAAATGACTCTAAAGAGGGTTT	Pool 2
COVID19_70_R	GTGACTGGAGTTCAGACGTGTGCTCTTCCGATCTTGACCTTCTTTAAAGACATAACAGCAG	Pool 2
COVID19_71_F	TCTTTCCCTACACGACGCTCTTCCGATCTACAAATCCAATTCAGTTGTCTTCCATTTC	Pool 1
COVID19_71_R	GTGACTGGAGTTCAGACGTGTGCTCTTCCGATCTTGAAAAGAAAGGTAAGAACAAGTCCT	Pool 1
COVID19_72_F	TCTTTCCCTACACGACGCTCTTCCGATCTACACGTGGTGTATTACCCTGAC	Pool 2
COVID19_72_R	GTGACTGGAGTTCAGACGTGTGCTCTTCCGATCTACTCTGAACTCACTTTCCATCCAAC	Pool 2
COVID19_73_F	TCTTTCCCTACACGACGCTCTTCCGATCTCAATTTTGAATGATCCATTTTGGGTGT	Pool 1
COVID19_73_R	GTGACTGGAGTTCAGACGTGTGCTCTTCCGATCTCACCAGCTGTCCAACCTGAAGA	Pool 1
COVID19_74_F	TCTTTCCCTACACGACGCTCTTCCGATCTACATCACTAGGTTTCAAACCTTACTTGC	Pool 3
COVID19_74_R	GTGACTGGAGTTCAGACGTGTGCTCTTCCGATCTGCAACACAGTTGCTGATTCTCTTC	Pool 3
COVID19_75_F	TCTTTCCCTACACGACGCTCTTCCGATCTAGAGTCCAACCAACAGAATCTATTGT	Pool 3
COVID19_75_R	GTGACTGGAGTTCAGACGTGTGCTCTTCCGATCTACCACCAACCTTAGAATCAAGATTGT	Pool 3
COVID19_76_F	TCTTTCCCTACACGACGCTCTTCCGATCTAGGGCAAACCTGGAAAGATTGCT	Pool 3
COVID19_76_F_alt3	TCTTTCCCTACACGACGCTCTTCCGATCTGGGCAAACCTGGAAAGATTGCTGA	Pool 3
COVID19_76_R	GTGACTGGAGTTCAGACGTGTGCTCTTCCGATCTACACCTGTGCCTGTTAAACCAT	Pool 3
COVID19_76_R_alt0	GTGACTGGAGTTCAGACGTGTGCTCTTCCGATCTACCTGTGCCTGTTAAACCATGA	Pool 3
COVID19_77_F	TCTTTCCCTACACGACGCTCTTCCGATCTCCAGCAACTGTTTGTGGACCTA	Pool 1
COVID19_77_R	GTGACTGGAGTTCAGACGTGTGCTCTTCCGATCTCAGCCCCTATTAACAGCCTGC	Pool 1
COVID19_78_F	TCTTTCCCTACACGACGCTCTTCCGATCTCAACTTACTCCTACTTGGCGTGT	Pool 2
COVID19_78_R	GTGACTGGAGTTCAGACGTGTGCTCTTCCGATCTTGTGTACAAAACCTGCCATATTGCA	Pool 2
COVID19_79_F	TCTTTCCCTACACGACGCTCTTCCGATCTGTGGTGATTCAACTGAATGCAGC	Pool 1

COVID19_79_R	GTGACTGGAGTTCAGACGTGTGCTCTTCCGATCTCATTTTCATCTGTGAGCAAAGGTGG	Pool 1
COVID19_80_F	TCTTTCCCTACACGACGCTCTTCCGATCTTTGCCTTGGTGATATTGCTGCT	Pool 2
COVID19_80_R	GTGACTGGAGTTCAGACGTGTGCTCTTCCGATCTTGGAGCTAAGTTGTTTAAACAAGCG	Pool 2
COVID19_81_F	TCTTTCCCTACACGACGCTCTTCCGATCTGCAC TTGGAAA CTTC AAGATGTGG	Pool 1
COVID19_81_R	GTGACTGGAGTTCAGACGTGTGCTCTTCCGATCTGTGAAGTTCTTTTCTTGTGCAGGG	Pool 1
COVID19_82_F	TCTTTCCCTACACGACGCTCTTCCGATCTGGGCTATCATCTTATGTCCTTCCCT	Pool 2
COVID19_82_R	GTGACTGGAGTTCAGACGTGTGCTCTTCCGATCTTGCCAGAGATGTCACCTAAATCAA	Pool 2
COVID19_83_F	TCTTTCCCTACACGACGCTCTTCCGATCTTCC TTTGCAACCTGAATTAGACTCA	Pool 1
COVID19_83_R	GTGACTGGAGTTCAGACGTGTGCTCTTCCGATCTTTTGACTCCTTTGAGCACTGGC	Pool 1
COVID19_84_F	TCTTTCCCTACACGACGCTCTTCCGATCTTGCTGTAGTTGTCTCAAGGGCT	Pool 2
COVID19_84_R	GTGACTGGAGTTCAGACGTGTGCTCTTCCGATCTAGGTGTGAGTAACTGTTACAAACAAC	Pool 2
COVID19_85_F	TCTTTCCCTACACGACGCTCTTCCGATCTACTAGCACTCTCCAAGGGTGTT	Pool 1
COVID19_85_R	GTGACTGGAGTTCAGACGTGTGCTCTTCCGATCTACACAGCTTTTACTCCAGATTCCC	Pool 1
COVID19_86_F	TCTTTCCCTACACGACGCTCTTCCGATCTTCAGGTGATGGCACAACAAGTC	Pool 2
COVID19_86_R	GTGACTGGAGTTCAGACGTGTGCTCTTCCGATCTACGAAAGCAAGAAAAGAAGTACGC	Pool 2
COVID19_87_F	TCTTTCCCTACACGACGCTCTTCCGATCTCGACTACTAGCGTGCCTTTGTA	Pool 1
COVID19_87_R	GTGACTGGAGTTCAGACGTGTGCTCTTCCGATCTACTAGGTTCCATTGTTCAAGGAGC	Pool 1
COVID19_88_F	TCTTTCCCTACACGACGCTCTTCCGATCTCCATGGCAGATTCCAACGGTAC	Pool 2
COVID19_88_R	GTGACTGGAGTTCAGACGTGTGCTCTTCCGATCTTGGTCAGAATAGTGCCATGGAGT	Pool 2
COVID19_89_F	TCTTTCCCTACACGACGCTCTTCCGATCTGTACGCGTTCCATGTGGTCATT	Pool 1
COVID19_89_F_alt2	TCTTTCCCTACACGACGCTCTTCCGATCTCGCGTTCCATGTGGTCATTCAA	Pool 1

COVID19_89_R	GTGACTGGAGTTCAGACGTGTGCTCTTCCGATCTACCTGAAAGTCAACGAGATGAAACA	Pool 1
COVID19_89_R_alt4	GTGACTGGAGTTCAGACGTGTGCTCTTCCGATCTACGAGATGAAACATCTGTTGTCACT	Pool 1
COVID19_90_F	TCTTCCCTACACGACGCTCTTCCGATCTACACAGACCATCCAGTAGCAGT	Pool 2
COVID19_90_R	GTGACTGGAGTTCAGACGTGTGCTCTTCCGATCTTGAAATGGTGAATTGCCCTCGT	Pool 2
COVID19_91_F	TCTTCCCTACACGACGCTCTTCCGATCTTCACTACCAAGAGTGTGTTAGAGGT	Pool 1
COVID19_91_R	GTGACTGGAGTTCAGACGTGTGCTCTTCCGATCTTTCAAGTGAGAACCAAAAGATAATAAGCA	Pool 1
COVID19_92_F	TCTTCCCTACACGACGCTCTTCCGATCTTTGTGCTTTTTAGCCTTTCTGCT	Pool 2
COVID19_92_R	GTGACTGGAGTTCAGACGTGTGCTCTTCCGATCTAGGTTCTGGCAATTAATTGTAAAAGG	Pool 2
COVID19_93_F	TCTTCCCTACACGACGCTCTTCCGATCTTGAGGCTGGTTCTAAATCACCCA	Pool 1
COVID19_93_R	GTGACTGGAGTTCAGACGTGTGCTCTTCCGATCTAGGCTTCTCCTTGCCATGTTGAG	Pool 1
COVID19_94_F	TCTTCCCTACACGACGCTCTTCCGATCTGGCCCCAAGGTTTACCCAATAA	Pool 2
COVID19_94_R	GTGACTGGAGTTCAGACGTGTGCTCTTCCGATCTTTTGCAATGTTGTTCTTGAGG	Pool 2
COVID19_95_F	TCTTCCCTACACGACGCTCTTCCGATCTTGAGGGAGCCTTGAATACACCA	Pool 1
COVID19_95_R	GTGACTGGAGTTCAGACGTGTGCTCTTCCGATCTCAGTACGTTTTTGCCGAGGCTT	Pool 1
COVID19_96_F	TCTTCCCTACACGACGCTCTTCCGATCTGCCAACAAACAAGGCCAAAC	Pool 2
COVID19_96_R	GTGACTGGAGTTCAGACGTGTGCTCTTCCGATCTTAGGCTCTGTTGGTGGGAATGT	Pool 2
COVID19_97_F	TCTTCCCTACACGACGCTCTTCCGATCTTGATGACAAAGATCCAAATTTCAAAGA	Pool 1
COVID19_97_R	GTGACTGGAGTTCAGACGTGTGCTCTTCCGATCTACACACTGATTAAGATTGCTATGTGAG	Pool 1
COVID19_98_F	TCTTCCCTACACGACGCTCTTCCGATCTAACAATTGCAACAATCCATGAGCA	Pool 2
COVID19_98_R	GTGACTGGAGTTCAGACGTGTGCTCTTCCGATCTTCTCCTAAGAAGCTATTAATAATCACATGG	Pool 2

Supplementary Table 4: Genotype at potentially mutated sites L9P, G172R, E484K, N501Y, A570D, D614G, P681H, and T716I determined by SIRPH analysis (SNuPE) and whole viral genome sequencing (Seq.). In sequencing data regions with coverage less than 20 were excluded (NA) from the analysis.

ID	SNuPE	SNuPE	SNuPE	SNuPE	SNuPE	SNuPE	SNuPE	SNuPE	Seq.	Seq.	Seq.	Seq.	Seq.	Seq.	Seq.	Seq.
	L9P	G172R	E484K	N501Y	A570D	D614G	P681H	T716I	L9P	G172R	E484K	N501Y	A570D	D614G	P681H	T716I
2	T (WT)	G (WT)	G (WT)	A (WT)	C (WT)	G (Mut)	C (WT)	C (WT)	T (WT)	G (WT)	G (WT)	A (WT)	C (WT)	G (Mut)	C (WT)	C (WT)
3	T (WT)	G (WT)	G (WT)	A (WT)	C (WT)	G (Mut)	C (WT)	C (WT)	T (WT)	G (WT)	G (WT)	A (WT)	C (WT)	G (Mut)	C (WT)	C (WT)
4	T (WT)	G (WT)	G (WT)	A (WT)	C (WT)	G (Mut)	C (WT)	C (WT)	T (WT)	G (WT)	NA	NA	C (WT)	G (Mut)	C (WT)	C (WT)
5	T (WT)	G (WT)	G (WT)	A (WT)	C (WT)	G (Mut)	C (WT)	C (WT)	T (WT)	G (WT)	G (WT)	A (WT)	C (WT)	G (Mut)	C (WT)	C (WT)
6	T (WT)	C (Mut)	G (WT)	A (WT)	C (WT)	G (Mut)	C (WT)	C (WT)	T (WT)	C (Mut)	G (WT)	A (WT)	C (WT)	G (Mut)	C (WT)	C (WT)
7	T (WT)	G (WT)	G (WT)	A (WT)	C (WT)	G (Mut)	C (WT)	C (WT)	T (WT)	G (WT)	NA	NA	C (WT)	G (Mut)	C (WT)	C (WT)
8	T (WT)	C (Mut)	G (WT)	A (WT)	C (WT)	G (Mut)	C (WT)	C (WT)	T (WT)	C (Mut)	G (WT)	A (WT)	C (WT)	G (Mut)	C (WT)	C (WT)
9	T (WT)	G (WT)	G (WT)	A (WT)	C (WT)	G (Mut)	C (WT)	C (WT)	T (WT)	G (WT)	G (WT)	NA	C (WT)	G (Mut)	C (WT)	C (WT)
10	T (WT)	C (Mut)	G (WT)	A (WT)	C (WT)	G (Mut)	C (WT)	C (WT)	T (WT)	C (Mut)	G (WT)	A (WT)	C (WT)	G (Mut)	C (WT)	C (WT)
11	T (WT)	G (WT)	G (WT)	A (WT)	C (WT)	G (Mut)	C (WT)	C (WT)	T (WT)	G (WT)	G (WT)	A (WT)	C (WT)	G (Mut)	C (WT)	C (WT)
12	T (WT)	C (Mut)	G (WT)	A (WT)	C (WT)	G (Mut)	C (WT)	C (WT)	T (WT)	NA	G (WT)	A (WT)	C (WT)	G (Mut)	C (WT)	C (WT)
13	T (WT)	G (WT)	G (WT)	A (WT)	C (WT)	G (Mut)	C (WT)	C (WT)	T (WT)	G (WT)	G (WT)	A (WT)	C (WT)	G (Mut)	C (WT)	C (WT)
14	T (WT)	C (Mut)	G (WT)	A (WT)	C (WT)	G (Mut)	C (WT)	C (WT)	T (WT)	NA	G (WT)	A (WT)	C (WT)	G (Mut)	C (WT)	C (WT)
15	C (Mut)	G (WT)	G (WT)	A (WT)	C (WT)	G (Mut)	C (WT)	C (WT)	NA	G (WT)	G (WT)	A (WT)	C (WT)	G (Mut)	C (WT)	C (WT)
16	C (Mut)	G (WT)	G (WT)	A (WT)	C (WT)	G (Mut)	C (WT)	C (WT)	NA	G (WT)	G (WT)	A (WT)	C (WT)	G (Mut)	C (WT)	C (WT)
17	T (WT)	G (WT)	G (WT)	A (WT)	C (WT)	G (Mut)	C (WT)	C (WT)	T (WT)	G (WT)	G (WT)	A (WT)	C (WT)	G (Mut)	C (WT)	C (WT)

112	T (WT)	G (WT)	G (WT)	A (WT)	C (WT)	G (Mut)	C (WT)	C (WT)	T (WT)	G (WT)	NA	NA	C (WT)	G (Mut)	C (WT)	C (WT)
-----	--------	--------	--------	--------	--------	---------	--------	--------	--------	--------	----	----	--------	---------	--------	--------

Supplementary Table 5: Mutation profile of VOC candidates determined by SIRPH analysis.

ID	SARS-CoV-2 PCR Ct	SNuPE (E484K)	SNuPE (N501Y)	SNuPE (A570D)	SNuPE (D614G)	SNuPE (P681H)	SNuPE (T716I)	SNuPE (V1176F)	VOC
3004631047	15	G (WT)	T (Mut)	A (Mut)	G (Mut)	A (Mut)	T (Mut)	NA	B1.1.7
3004631647	18	G (WT)	T (Mut)	A (Mut)	G (Mut)	A (Mut)	T (Mut)	NA	B1.1.7
3004627147	19	G (WT)	T (Mut)	A (Mut)	G (Mut)	A (Mut)	T (Mut)	NA	B1.1.7
3004631847	23	G (WT)	T (Mut)	A (Mut)	G (Mut)	A (Mut)	T (Mut)	NA	B1.1.7
20291038	24	G (WT)	T (Mut)	A (Mut)	G (Mut)	A (Mut)	T (Mut)	NA	B1.1.7
30046507	25	G (WT)	T (Mut)	A (Mut)	G (Mut)	A (Mut)	T (Mut)	NA	B1.1.7
21003884	27	G (WT)	T (Mut)	A (Mut)	G (Mut)	A (Mut)	T (Mut)	NA	B1.1.7
21003581	27	G (WT)	T (Mut)	A (Mut)	G (Mut)	A (Mut)	T (Mut)	NA	B1.1.7
21003582	28	G (WT)	T (Mut)	A (Mut)	G (Mut)	A (Mut)	T (Mut)	NA	B1.1.7
10474388	31	A (Mut)	NA	C (WT)	G (Mut)	C (WT)	C (WT)	G (WT)	B.1.351
10474400	NA	G (WT)	T (Mut)	A (Mut)	G (Mut)	A (Mut)	T (Mut)	NA	B1.1.7
10474401	NA	G (WT)	T (Mut)	A (Mut)	G (Mut)	A (Mut)	T (Mut)	NA	B1.1.7

Supplementary Table 6: GISAID Identifiers for viral genome sequences. Note that only sequences with high quality (more than 95% genomic coverage with at least 20X) were submitted to GISAID. Consensus sequences with more missing sites but sufficient coverage at the analyzed potentially mutated sites can be found in Sup. Data 1.

EPI_ISL_1091121	EPI_ISL_1091106	EPI_ISL_1091114	EPI_ISL_1091138	EPI_ISL_1091093
EPI_ISL_1091111	EPI_ISL_1091120	EPI_ISL_1091130	EPI_ISL_1091103	EPI_ISL_1091129
EPI_ISL_1091122	EPI_ISL_1091091	EPI_ISL_1091126	EPI_ISL_1091109	EPI_ISL_1091135
EPI_ISL_1091097	EPI_ISL_1091101	EPI_ISL_1091118	EPI_ISL_1091136	EPI_ISL_1091137
EPI_ISL_1091115	EPI_ISL_1091127	EPI_ISL_1091125	EPI_ISL_1091092	EPI_ISL_1091100
EPI_ISL_1091146	EPI_ISL_1091108	EPI_ISL_1091107	EPI_ISL_1091098	EPI_ISL_1091102
EPI_ISL_1091099	EPI_ISL_1091112	EPI_ISL_1091140	EPI_ISL_1091104	EPI_ISL_1091094
EPI_ISL_1091090	EPI_ISL_1091096	EPI_ISL_1091113	EPI_ISL_1091117	