

# Supplementary Appendix

## Appendix A: The survey implementation process

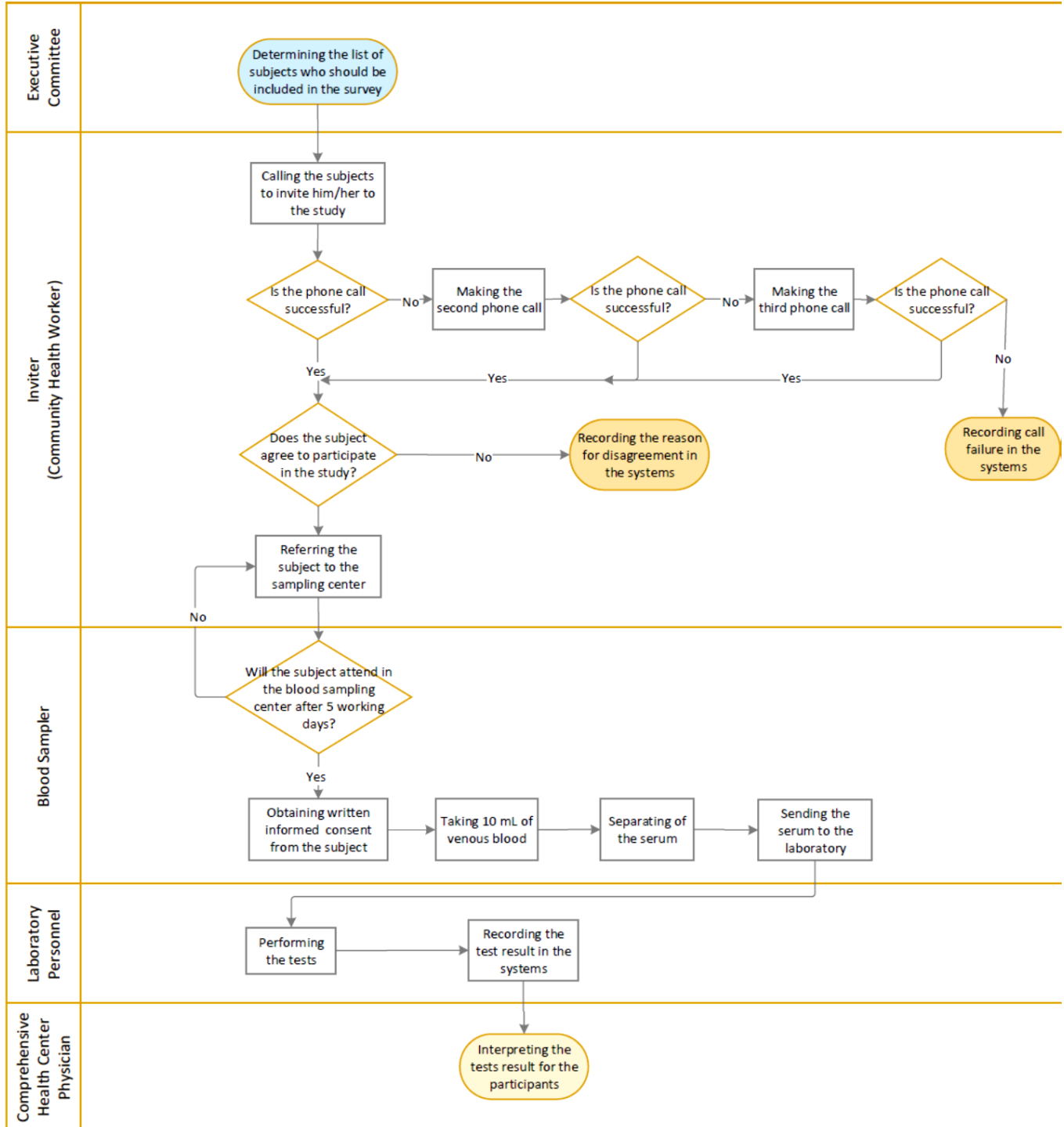


Figure S1: The survey implementation process

**Appendix B:** Estimating the sensitivity and specificity of Pishtaz Teb laboratory kit

In order to estimate the sensitivity of Pishtaz Teb laboratory kit in comparison with the gold standard PCR test in the diagnosis of COVID- 19, blood samples were taken from 254 cases with a definite diagnosis of COVID-19 based on the PCR test, and IgG antibodies were tested in their serum using the study laboratory kit. Table S1 presents the age and sex distributions, the time elapsed since the onset of symptoms, and hospitalization status of the subjects included in the sensitivity calculation study.

Table S1: Characteristics of the participants in the study of estimating the sensitivity of the Pishtaz-Teb kit

	Female No. (%)	Male No. (%)	Total No. (%)
<b><i>Age (years)</i></b>			
6-20	6 (4.41)	3 (2.54)	9 (3.54)
21-30	13 (9.56)	11 (9.32)	24 (9.45)
31-40	38 (27.94)	28 (23.73)	66 (25.98)
41-50	25 (18.38)	26 (22.03)	51 (20.08)
51-60	27 (19.85)	24 (20.34)	51 (20.08)
≥ 60	27 (19.85)	26 (22.03)	53 (20.87)
<b><i>Interval from onset of the symptoms (week)</i></b>			
3-4	41 (30.15)	35 (29.66)	76 (29.92)
5-8	45 (33.09)	36 (30.51)	81 (31.89)
9-12	43 (31.62)	33 (27.97)	76 (29.92)
13-16	7 (5.15)	14 (11.86)	21 (8.27)
<b><i>Hospitalization status</i></b>			
Outpatient	85 (62.50)	56 (47.46)	141 (55.51)
Inpatient	51 (37.50)	62 (52.54)	113 (44.49)

Evaluation of the factors affecting the positive result of IgG serology test in the PCR positive subjects (sensitivity) by multiple modified Poisson regression showed no evidence for association between sensitivity with age ( $P=0.7$ ), sex ( $P=0.47$ ), severity of symptoms (inpatient/ outpatient care) ( $P=0.29$ ), and duration after symptom onset (week) ( $P=0.11$ ). The modified Poisson regression gave us the relative risk (RR) of sensitivity for each of the mentioned independent variables (1). On the other hand, the one-way chi-square test showed a little evidence for association between severity of symptoms and sensitivity of the IgG test ( $P=0.08$ ). Accordingly, the sensitivity of the IgG test of the study laboratory kit after weighting based on the distribution of severity of disease symptoms in the community (assuming that 10% of the patients had severe symptoms and 90% had no severe symptoms) was estimated as 0.74; 95% CI: (0.67, 0.80).

To estimate the specificity of Pishtaz Teb laboratory kit, frozen serum of 410 participants in the Tehran Lipid and Glucose Study (TLGS) (2) was used, and the presence of IgG antibody against COVID-19 in their serum was tested using the study laboratory kit. Table S2 shows the age and sex distributions and the season when serum samples were taken from these individuals. Investigating the factors affecting the positive serological test result of IgG (false positive or test specificity) using multiple modified Poisson regression in healthy individuals showed that age is the only factor that affects the positive serological test result in healthy individuals. So that, increasing in age is associated with an increase in false-positive probability (RR = 1.03 (95%CI: 1.00, 1.05)), and a decrease in test specificity. There was no evidence for association of gender ( $P=0.12$ ) and season of blood sampling ( $P>0.2$ ) with the test specificity. Therefore, the specificity of IgG serology test for the study laboratory kit, after weighting based on the age distribution of the Iranian population in the 2016 census, was estimated as 0.98 (95%CI: 0.96, 0.99).

Table S2: Characteristics of the subjects whose frozen serum was used to estimate the specificity of the Pishtaz-Teb kit

	Female No. (%)	Male No. (%)	Total No. (%)
<b><i>Age (years)</i></b>			
6-20	37 (18.14)	33 (16.02)	70 (17.07)
21-30	36 (17.65)	46 (22.33)	82 (20)
31-40	56 (27.45)	53 (25.73)	109 (26.59)
41-50	28 (13.73)	24 (11.65)	52 (12.68)
51-60	24 (11.76)	28 (13.59)	52 (12.68)
≥ 60	23 (11.27)	22 (10.68)	45 (10.98)
<b><i>Sampling season</i></b>			
Spring	51 (25)	52 (25.24)	103 (25.12)
Summer	52 (25.49)	51 (24.76)	103 (25.12)
Fall	51 (25)	52 (25.24)	103 (25.12)
Winter	50 (24.51)	51 (24.76)	101 (24.63)

**Appendix C: Prevalence of COVID-19 in Iran and among the provinces by age, gender and urban/rural area of residence**

Table S3: Crude prevalence vs. test measurement error adjusted and weighted prevalence of COVID-19 in Iran and among the provinces (by age, gender and urban/rural area of residence)

	No. of participants	No. of IgG positives	Prevalence (95% CI/UI) <sup>a</sup>	Gender		Area		Age, years			
				Male	Female	Urban	Rural	6-17	18-39	40-59	60 $\geq$
Total Country	11256	1303	Crude	11.3 (10.5, 12.2)	11.8 (11.0, 12.6)	12.4 (11.6, 13.2)	10.3 (9.4, 11.2)	10.3 (9.1, 11.5)	10.3 (9.5, 11.2)	13.0 (11.8, 14.2)	14.7 (12.8, 16.5)
			Adjusted	14.6 (13.4, 15.9)	13.8 (12.5, 15.2)	16.6 (15.3, 18.0)	11.7 (10.6, 13.0)	11.5 (9.9, 13.4)	11.6 (10.5, 12.8)	14.3 (12.8, 16.0)	19.4 (17.0, 22.1)
Khuzestan	416	67	Crude	20.4 (14.8, 26.1)	11.8 (7.6, 16.1)	14.8 (10.7, 18.9)	LPE	LPE	8.2 (4.2, 12.2)	LPE	15.9 (12.4, 19.4)
			Adjusted	35.14 (29.14, 41.64)	15.8 (11.2, 21.9)	22.0 (17.0, 27.8)	LPE	LPE	11.3 (7.2, 17.1)	LPE	LPE
Markazi	340	33	Crude	7.7 (3.5, 11.9)	10.9 (6.4, 15.4)	7.7 (4.3, 11.1)	LPE	LPE	9.2 (3.8, 14.6)	11.0 (5.4, 16.7)	LPE
			Adjusted	7.4 (3.7, 14.1)	LPE	7.4 (4.7, 11.4)	LPE	LPE	LPE	LPE	LPE
Ardabil	223	53	Crude	LPE <sup>b</sup>	LPE	LPE	LPE	LPE	LPE	LPE	LPE
			Adjusted	LPE	LPE	LPE	LPE	LPE	LPE	LPE	LPE
West Azerbaijan	520	42	Crude	7.0 (3.9, 10.1)	8.8 (5.4, 12.2)	8.5 (5.5, 11.6)	6.9 (3.4, 10.3)	9.6 (4.2, 14.9)	4.9 (1.9, 7.9)	9.2 (4.4, 14.0)	LPE
			Adjusted	7.3 (4.4, 11.8)	11.9 (8.2, 17.0)	11.6 (8.1, 16.4)	7.5 (4.4, 12.4)	LPE	5.3 (2.9, 9.6)	10.6 (6.4, 17.1)	LPE
Hamadan	202	29	Crude	LPE	8.7 (3.3, 14.1)	10.8 (5.3, 16.4)	LPE	LPE	LPE	LPE	LPE
			Adjusted	LPE	LPE	LPE	LPE	LPE	LPE	LPE	LPE
North Khorasan	464	40	Crude	8.3 (4.6, 11.9)	8.9 (5.4, 12.5)	9.2 (5.4, 13.1)	8.1 (4.7, 11.5)	7.8 (2.6, 12.9)	8.6 (4.5, 12.6)	8.1 (3.3, 12.9)	LPE
			Adjusted	LPE	10.5 (6.8, 15.7)	LPE	9.0 (6.0, 13.3)	8.5 (4.4, 15.7)	10.3 (6.5, 15.8)	9.8 (5.4, 16.9)	LPE
Isfahan	368	31	Crude	7.6 (3.8, 11.4)	8.7 (4.6, 12.8)	8.3 (5.2, 11.4)	LPE	LPE	6.1 (2.0, 10.1)	9.8 (4.3, 15.3)	LPE
			Adjusted	5.8 (3.2, 10.4)	10.0 (6.0, 16.3)	11.4 (7.6, 16.8)	4.3 (1.7, 10.7)	LPE	4.0 (2.1, 7.4)	8.2 (4.1, 15.7)	LPE
Alborz	231	26	Crude	9.2 (3.5, 14.9)	12.8 (7.1, 18.5)	12.1 (7.7, 16.5)	0 (0,0)	LPE	LPE	LPE	LPE

			Adjusted	8.7 (4.8, 15.3)	4.4 (2.6, 7.3)	20.2 (12.9, 30.1)	0 (0, 0)	3.5 (1.6, 7.5)	4.9 (2.8, 8.4)	3.2 (1.6, 6.3)	LPE
Tehran	248	40	Crude	LPE	LPE	16.4 (11.5, 21.3)	LPE	LPE	LPE	LPE	LPE
			Adjusted	LPE	LPE	LPE	LPE	LPE	LPE	LPE	LPE
Sistan & Baluchestan	650	98	Crude	13.2 (9.4, 17.1)	16.1 (12.2, 20.0)	16.7 (12.2, 21.2)	13.5 (10.1, 16.9)	12.6 (8.0, 17.1)	14.3 (10.2, 18.3)	LPE	LPE
			Adjusted	LPE	18.5 (14.4, 23.4)	19.2 (14.3, 25.2)	18.2 (13.5, 24.0)	15.7 (10.7, 22.4)	17.2 (13.1, 22.1)	LPE	LPE
Ilam	360	36	Crude	10.2 (5.9, 14.6)	8.0 (4.0, 12.1)	10.1 (6.1, 14.2)	7.7 (3.3, 12.1)	LPE	11.3 (6.4, 16.2)	6.1 (0.9, 11.3)	LPE
			Adjusted	12.2 (8.2, 17.7)	8.6 (4.8, 15.0)	12.0 (7.9, 17.9)	8.2 (4.6, 14.3)	LPE	LPE	6.6 (3.1, 13.7)	LPE
Mazandaran	569	69	Crude	11.6 (7.8, 15.4)	11.9 (8.2, 15.6)	13.1 (9.2, 17.0)	10.4 (6.8, 14.0)	LPE	9.2 (5.4, 12.9)	12.4 (7.5, 17.4)	LPE
			Adjusted	16.2 (11.7, 22.1)	16.4 (12.0, 21.9)	18.7 (13.7, 24.9)	13.5 (9.7, 18.4)	LPE	10.7 (7.2, 15.6)	15.4 (10.6, 21.8)	LPE
South Khorasan	390	25	Crude	6.4 (2.7, 10.1)	5.5 (2.5, 8.5)	6.2 (2.9, 9.5)	5.5 (2.2, 8.9)	5.7 (1.3, 10.1)	4.2 (0.9, 7.4)	7.9 (2.7, 13.2)	LPE
			Adjusted	7.0 (3.7, 12.9)	8.0 (4.3, 14.6)	8.3 (4.2, 15.6)	6.8 (3.8, 12.0)	5.6 (2.6, 11.6)	5.2 (2.5, 10.4)	LPE	LPE
Kerman	474	32	Crude	6.4 (3.4, 9.4)	7.2 (3.8, 10.6)	6.4 (3.4, 9.4)	7.1 (3.8, 10.5)	7.1 (2.6, 11.6)	6.5 (2.9, 10.0)	9.3 (3.8, 14.7)	1.9 (0, 5.4)
			Adjusted	6.6 (4.2, 10.4)	7.9 (4.5, 13.5)	5.6 (3.5, 8.8)	8.9 (5.2, 14.8)	8.6 (4.7, 15.2)	7.3 (4.3, 12.2)	9.8 (5.5, 16.8)	LPE
Hormozgan	336	17	Crude	6.0 (2.2, 9.7)	3.8 (1.0, 6.5)	7.4 (2.5, 12.3)	3.5 (1.1, 5.9)	2.8 (0, 6.6)	5.7 (1.9, 9.5)	2.4 (0, 5.6)	LPE
			Adjusted	8.7 (5.0, 14.7)	4.8 (2.0, 11.0)	7.2 (3.8, 13.2)	6.5 (3.3, 12.4)	LPE	LPE	2.9 (0.7, 11.0)	LPE
Bushehr	346	46	Crude	13.0 (7.9, 18.1)	13.6 (8.5, 18.6)	13.0 (8.8, 17.2)	LPE	LPE	12.1 (6.7, 17.6)	LPE	LPE
			Adjusted	LPE	LPE	LPE	LPE	LPE	LPE	LPE	LPE
East Azerbaijan	210	26	Crude	LPE	9.0 (3.7, 14.3)	11.8 (6.0, 17.6)	LPE	LPE	LPE	LPE	LPE
			Adjusted	LPE	10.1 (5.6, 17.5)	LPE	LPE	LPE	LPE	LPE	LPE
Razavi Khorasan	730	121	Crude	16.3 (12.5, 20.0)	17.1 (13.2, 21.0)	17.5 (14.3, 20.6)	14.1 (9.0, 19.3)	LPE	15.1 (11.2, 18.9)	17.3 (12.3, 22.3)	LPE
			Adjusted	19.1 (14.1, 25.4)	19.4 (14.7, 25.1)	22.8 (18.5, 27.8)	LPE	LPE	17.3 (12.7, 23.2)	LPE	LPE
Fars	271	23	Crude	9.3 (4.3, 14.3)	7.7 (3.3, 12.1)	10.1 (5.4, 14.7)	6.2 (1.8, 10.7)	5.7 (0, 11.9)	8.7 (3.3, 14.2)	LPE	LPE
			Adjusted	10.4 (5.9, 15.3)	7.1 (3.8, 10.4)	10.8 (6.6, 15.0)	6.4 (3.0, 9.8)	LPE	9.5 (5.4, 13.6)	LPE	LPE

				17.6)	12.9)	17.2)	13.2)		16.3)		
Zanjan	484	52	Crude	8.2 (4.6, 11.9)	12.8 (8.8, 16.9)	12.4 (8.4, 16.4)	8.7 (5.0, 12.5)	LPE	7.4 (3.8, 11.0)	13.4 (7.5, 19.3)	LPE
			Adjusted	11.9 (7.5, 18.3)	16.5 (12.1, 22.0)	17.9 (12.9, 24.4)	10.0 (6.4, 15.5)	LPE	8.4 (5.1, 13.4)	LPE	LPE
Semnan	359	34	Crude	8.7 (4.5, 12.9)	10.2 (5.9, 14.6)	10.7 (7.1, 14.3)	5.1 (0.2, 10.0)	5.1 (0, 10.7)	11.5 (6.0, 16.9)	10.7 (5.0, 16.4)	LPE
			Adjusted	LPE	8.8 (5.6, 13.4)	11.9 (8.5, 16.6)	LPE	2.4 (0.8, 7.2)	10.5 (5.9, 17.8)	8.2 (4.6, 14.2)	LPE
Chaharmahal & Bakhtiari	310	23	Crude	7.1 (3.0, 11.1)	7.8 (3.6, 12.0)	8.3 (4.5, 12.1)	5.7 (1.3, 10.2)	LPE	4.4 (0.6, 8.2)	9.7 (3.7, 15.7)	LPE
			Adjusted	LPE	8.3 (4.9, 13.8)	11.1 (7.0, 17.3)	13.7 (8.3, 21.7)	5.4 (2.0, 13.4)	3.3 (1.4, 7.9)	LPE	LPE
Qazvin	334	39	Crude	13.8 (8.5, 19.2)	7.4 (3.5, 11.3)	10.4 (6.4, 14.4)	10.6 (4.9, 16.3)	LPE	7.0 (2.8, 11.3)	LPE	LPE
			Adjusted	LPE	6.9 (3.8, 12.2)	LPE	LPE	LPE	7.6 (4.3, 13.2)	LPE	LPE
Qom	198	40	Crude	LPE	LPE	LPE	LPE	LPE	LPE	LPE	LPE
			Adjusted	LPE	15.8 (8.7, 27.0)	LPE	LPE	LPE	11.7 (7.9, 17.0)	LPE	LPE
Kurdistan	429	66	Crude	14.1 (9.2, 18.9)	15.7 (11.0, 20.3)	16.0 (11.5, 20.4)	13.3 (8.1, 18.4)	LPE	10.8 (5.9, 15.6)	LPE	LPE
			Adjusted	18.2 (13.4, 24.4)	19.1 (14.6, 24.5)	23.8 (18.6, 30.0)	12.7 (8.8, 18.0)	LPE	13.7 (9.1, 20.1)	LPE	LPE
Kermanshah	349	34	Crude	6.0 (2.2, 9.7)	12.3 (7.5, 17.1)	11.8 (7.1, 16.4)	6.3 (2.3, 10.3)	LPE	9.4 (4.5, 14.2)	LPE	LPE
			Adjusted	6.6 (3.1, 13.5)	14.7 (9.9, 21.2)	13.3 (9.0, 19.3)	7.2 (3.4, 14.8)	LPE	11.8 (7.3, 18.5)	7.4 (3.9, 13.6)	LPE
Guilan	216	18	Crude	8.0 (2.7, 13.3)	7.6 (2.8, 12.4)	5.5 (1.2, 9.8)	10.1 (4.4, 15.7)	3.3 (0, 9.8)	5.9 (0.3, 11.5)	5.1 (0.2, 9.9)	LPE
			Adjusted	8.8 (4.7, 15.7)	7.2 (3.5, 14.3)	6.2 (2.5, 14.5)	10.0 (6.1, 15.9)	LPE	LPE	5.2 (2.0, 12.9)	LPE
Lorestan	265	36	Crude	11.3 (6.1, 16.6)	12.1 (6.4, 17.8)	14.3 (8.5, 20.1)	8.8 (3.8, 13.8)	LPE	LPE	LPE	LPE
			Adjusted	13.3 (8.7, 19.8)	11.3 (7.1, 17.4)	15.6 (10.5, 22.4)	8.5 (5.1, 13.9)	LPE	LPE	LPE	LPE
Kohgiluyeh & Boyer-Ahmad	321	44	Crude	13.5 (8.2, 18.9)	13.9 (8.6, 19.1)	14.9 (9.5, 20.3)	12.4 (7.2, 17.6)	LPE	14.4 (8.4, 20.4)	LPE	LPE
			Adjusted	11.4 (7.7, 16.7)	14.5 (10.2, 20.3)	11.0 (7.7, 15.3)	15.4 (10.4, 22.3)	LPE	LPE	LPE	5.4 (2.2, 12.5)
Yazd	296	32	Crude	11.9 (6.6, 17.2)	9.8 (5.1, 14.5)	11.5 (7.4, 15.6)	LPE	4.4 (0, 9.3)	6.1 (1.7, 10.5)	LPE	LPE
			Adjusted	9.4 (6.0, 14.7)	LPE	LPE	LPE	3.0 (1.2, 7.4)	3.8 (2.0, 7.3)	LPE	LPE

Golestan	354	69	Crude	14.4 (9.1, 19.7)	23.1 (17.2, 29.0)	LPE	19.6 (14.5, 24.6)	LPE	LPE	LPE	LPE
			Adjusted	LPE	LPE	LPE	LPE	LPE	LPE	LPE	LPE

a: 95% Confidence Interval (CI) for crude prevalence, and 95% Uncertainty Interval (UI) for adjusted prevalence.

b: Low Precise Estimate (LPE); prevalence estimates with a confidence/uncertainty interval of wider than 12% have not been reported due to low precision.

## References

1. Zou G. A Modified Poisson Regression Approach to Prospective Studies with Binary Data. *American Journal of Epidemiology*. 2004;159(7):702-6.
2. Azizi F, Takyar M, Zadeh-Vakili A. Contributions and Implications of the Tehran Lipid and Glucose Study. *Int J Endocrinol Metab*. 2018;16(4 Suppl):e84792.