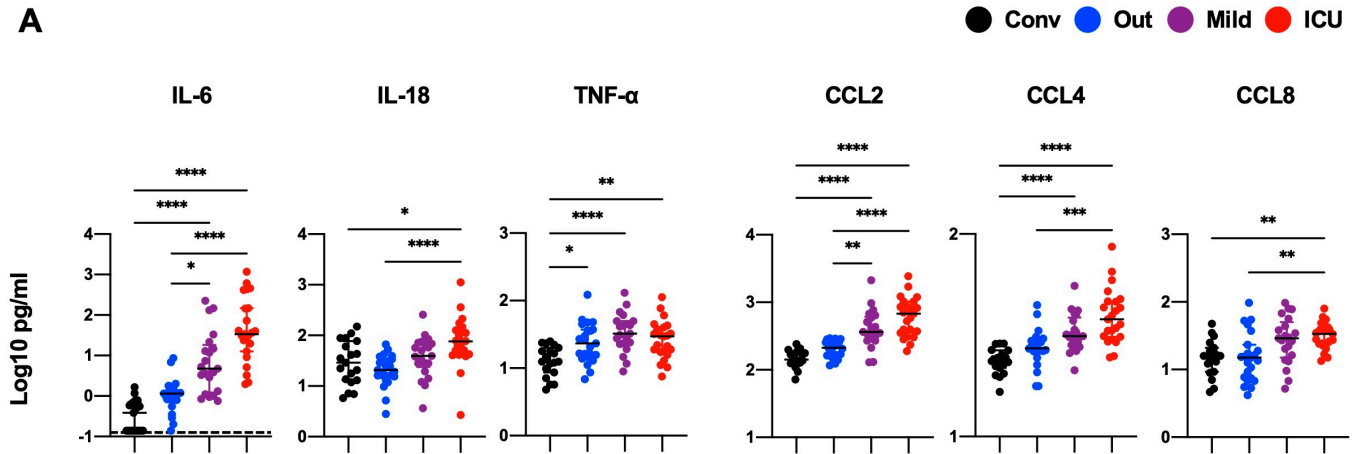


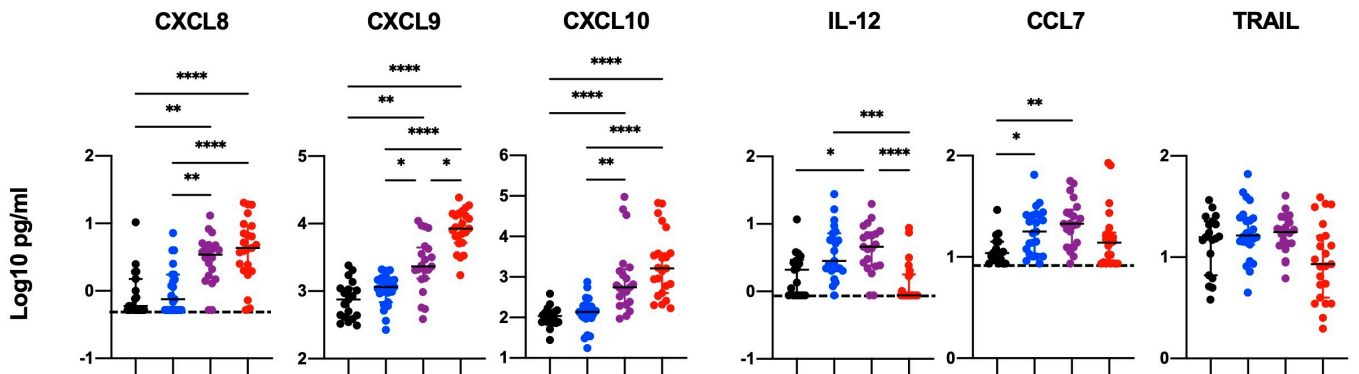
Supplementary Figure 1. Characteristics of patients

(A) Sample collection date is defined as days after symptom onset (DfSO) (B) Ages of patients. (C) SARS-CoV-2 Viral loads from plasma and nasopharyngeal swab (NP swab) of patients. The levels of viral load in plasma and nasopharyngeal swab were evaluated by quantitative reverse transcription polymerase chain reaction. The detection limits are indicated by dotted lines. The percent of samples with detectable viral loads are shown at the bottom. (D) Days between symptom onset and hospitalization, and length (days) of hospital stay of Mild and ICU patients. Significance testing among groups was performed using Kruskal-Wallis test with Dunn's multiple comparisons test. * $P < 0.05$, ** $P < 0.01$, *** $P < 0.001$, **** $P < 0.0001$.

A

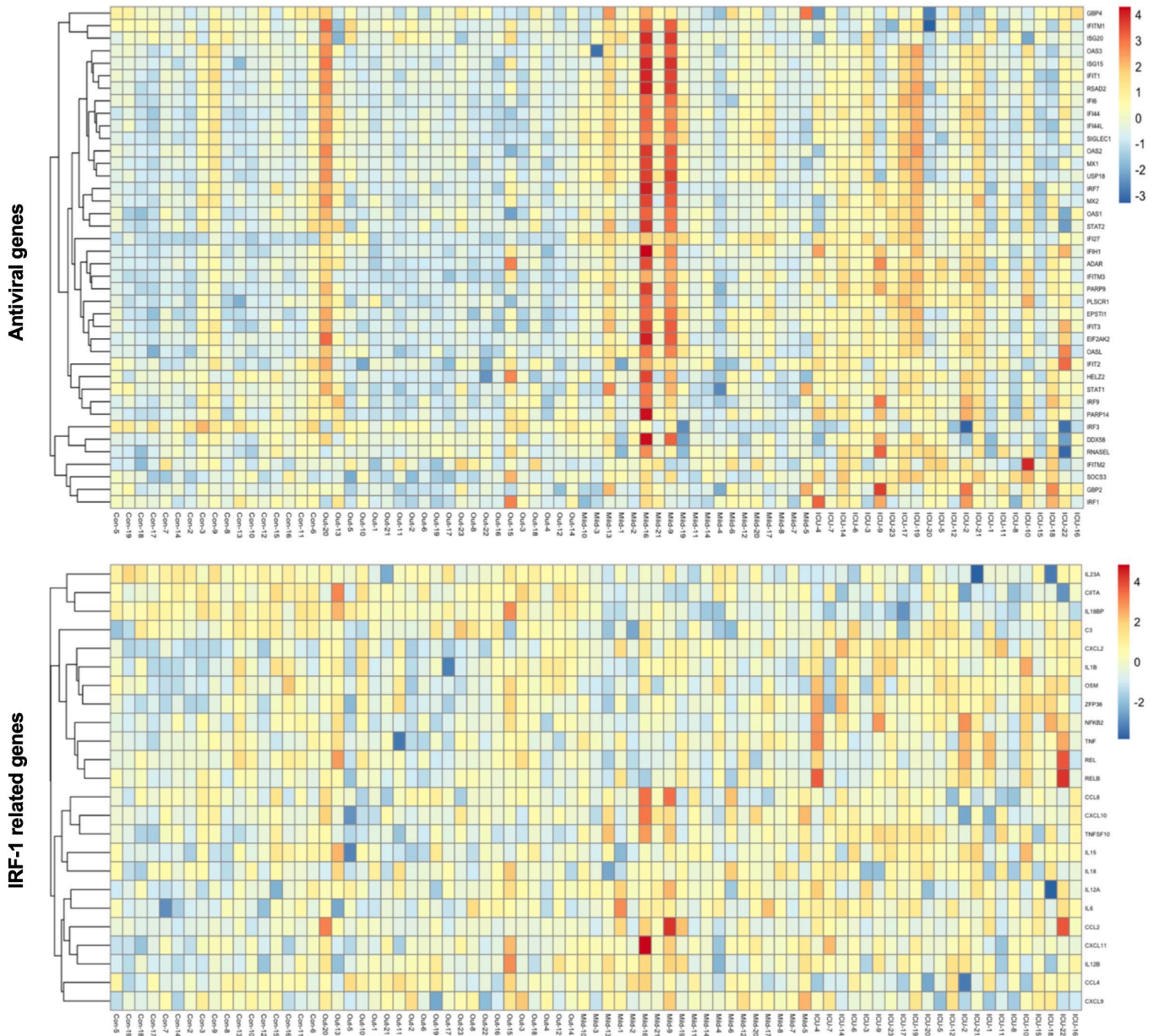


B

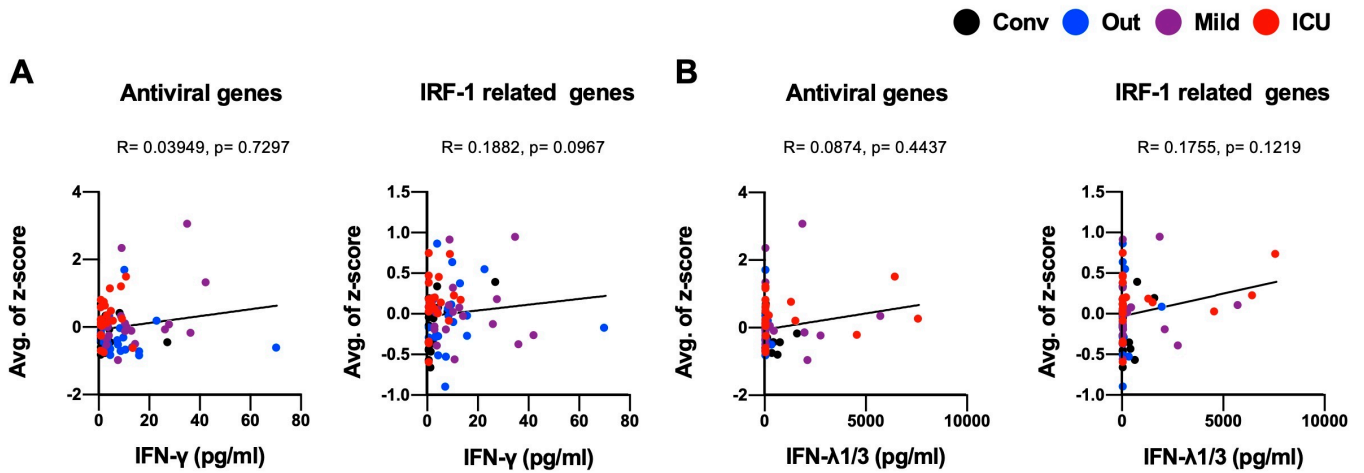


Supplementary Figure 2. Plasma levels of interferon regulatory factor 1 (IRF-1)-regulated cytokines and chemokines.

The detection limits are indicated by dotted lines. Significance testing among groups was performed using Kruskal-Wallis test with Dunn's multiple comparisons test. * $P < 0.05$, ** $P < 0.01$, *** $P < 0.001$, **** $P < 0.0001$.

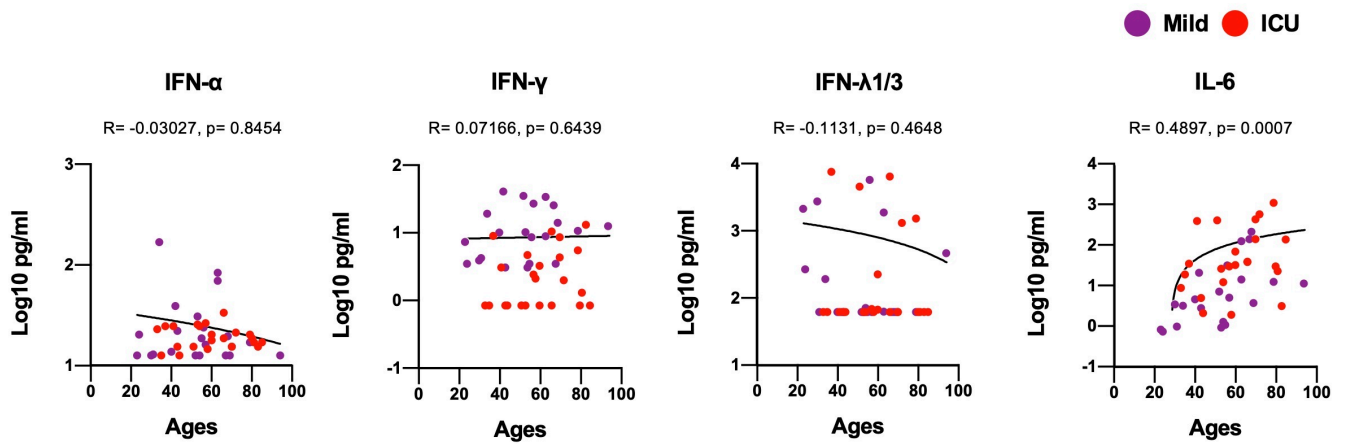


Supplementary Figure 3. The expression of interferon-stimulated genes in PBMCs
 Normalized mRNA expression levels of antiviral genes and IRF-1 related genes in PBMCs were transformed into z-score and visualized in the form of heatmap.

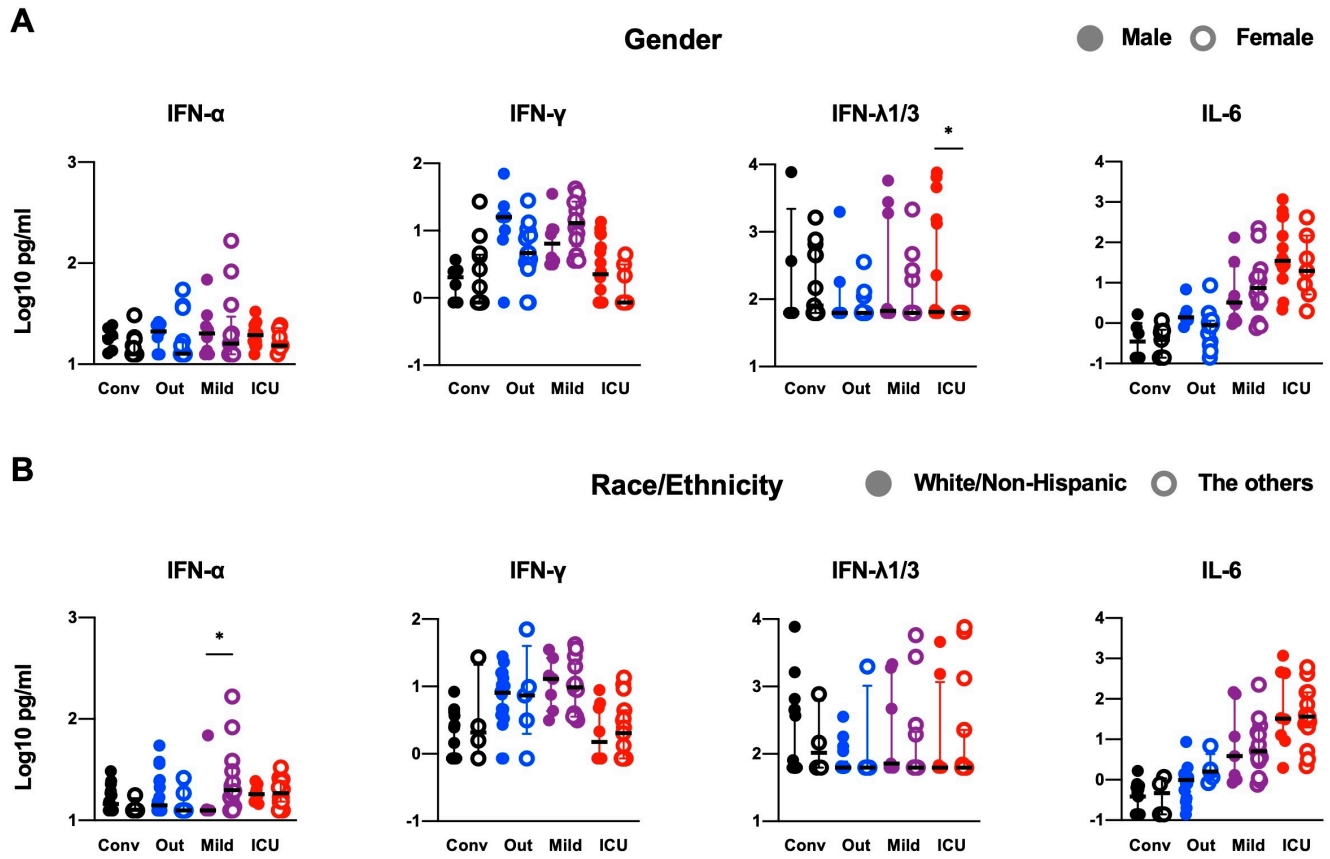


Supplementary Figure 4. Correlation between the interferons levels and ISGs expression.

Correlation between the levels of IFN- α (A), IFN- λ 1/3 (B) and the average z-scores of antiviral genes and IRF-1 related genes. Spearman's rank test was used for the correlations. The regression line (solid) are shown.



Supplementary Figure 5. Correlation between ages and the levels of interferons and IL-6.
 Correlation between ages and the levels of IFN- α , IFN- γ , IFN- λ 1/3, and IL-6. Spearman's rank test was used for the correlations. The regression line (solid) are shown.



Supplementary Figure 6. The levels of the interferons and IL-6 segmented by gender and race/ethnicity. The levels of IFN- α , IFN- γ , IFN- λ 1/3, and IL-6 were segmented by gender (A) and race/ethnicity (B).

Supplementary Table 1. Characteristics of patients				
	Convalescent	Outpatients	Hospitalized	Hospitalized
			non-ICU	ICU
Numbers	22.1% (19/86)	26.7% (23/86)	24.4% (21/86)	26.7% (23/86)
Ages, median (IQR)	33 (30-42)	34 (29-54)	54 (37-65)	60 (44-72)
Male, no (%)	6 (31.6%)	7 (30.4%)	8 (38.1%)	16 (69.5%)
Race/Ethnicity				
Asian/Non-Hispanic	5.3 % (1/19)	8.7 % (2/23)	-	-
Asian/Hispanic	-	-	4.8 % (1/21)	-
Asian/Unknown	-	-	-	-
Black or African American/Non-Hispanic	5.3 % (1/19)	8.7 % (2/23)	4.8 % (1/21)	13.0 % (3/23)
Black or African American/Hispanic	-	-	4.8 % (1/21)	4.3 % (1/23)
Black or African American/Unknown	-	-	-	4.3 % (1/23)
White/Non-Hispanic	78.9 % (15/19)	78.2 % (18/23)	33.3 % (7/21)	34.8 % (8/23)
White/Hispanic	10.5 % (2/19)	4.3 % (1/23)	9.5 % (2/21)	-
White/Unknown	-	-	-	4.3 % (1/23)
Unknown/Non-Hispanic	-	-	-	4.3 % (1/23)
Unknown/Hispanic	-	-	33.3 % (7/21)	21.7 % (5/23)
Unknown/Unknown	-	-	9.5 % (2/21)	13.0 % (3/23)
Median interval from symptom onset to admission, days (IQR)	-	-	8 (5-11.5)	6 (3-9)
Median duration of hospitalized, days (IQR)	-	-	6 (5-9.5)	38.5 (30-42.5)*
Sample collection date, days after symptom onset (IQR)	34 (30-38)	25 (20-35)	14 (11-16)	15 (11-19)
*the patients deceased (n=6) and currently hospitalized (n=2) at the time of analysis were excluded				

Supplementary Table 2. Primers for IFN- γ stimulated genes

Primer Name	Sequence (5' - >3')
<i>HLA-A</i> forward	AAA AGG AGG GAG TTA CAC TCA GG
<i>HLA-A</i> reverse	GCT GTG AGG GAC ACA TCA GAG
<i>HLA-B</i> forward	CTA CCC TGC GGA GAT CA
<i>HLA-B</i> reverse	ACA GCC AGG CCA GCA ACA
<i>B2M</i> forward	TGC TGT CTC CAT GTT TGA TGT ATCT
<i>B2M</i> reverse	TCT CTG CTC CCC ACC TCT AAG T
<i>HLA-DPA1</i> forward	ATG CGC CCT GAA GAC AGA ATG
<i>HLA-DPA1</i> reverse	ACA CAT GGT CCG CCT TGA TG
<i>HLA-DRA</i> forward	GCC AAC CTG GAA ATC ATG ACA
<i>HLA-DRA</i> reverse	AGG GCT GTT CGT GAG CAC A
<i>CIITA</i> forward	TTA TGC CAA TAT CGC GGA ACT G
<i>CIITA</i> reverse	CAT CTG GTC CTA TGT GCT TGA AA

Supplemental acknowledgments

MGH COVID-19 Collection & Processing Team Participants

Collection Team: Kendall Lavin-Parsons¹, Blair Parry¹, Brendan Lilley¹, Carl Lodenstein¹, Brenna McKaig¹, Nicole Charland¹, Hargun Khanna¹, Justin Margolin¹, Edward DeMers⁶, Kelly Judge⁶, Bruce D. Walker⁶, Peggy Lai⁶, Musie S. Ghebremichael⁶

Processing Team: Anna Gonye², Irena Gushterova², Tom Lasalle², Nihaarika Sharma², Brian C. Russo³, Maricarmen Rojas-Lopez³, Moshe Sade-Feldman⁴, Kasidet Manakongtreecheep⁴, Jessica Tantivit⁴, Molly Fisher Thomas⁴

Massachusetts Consortium on Pathogen Readiness: Betelihem A. Abayneh⁵, Patrick Allen⁵, Diane Antille⁵, Katrina Armstrong⁵, Siobhan Boyce⁵, Joan Braley⁵, Karen Branch⁵, Katherine Broderick⁵, Julia Carney⁵, Andrew Chan⁵, Susan Davidson⁵, Michael Dougan⁵, David Drew⁵, Ashley Elliman⁵, Keith Flaherty⁵, Jeanne Flannery⁵, Pamela Forde⁵, Elise Gettings⁵, Amanda Griffin⁵, Sheila Grimmel⁵, Kathleen Grinke⁵, Kathryn Hall⁵, Meg Healy⁵, Deborah Henault⁵, Grace Holland⁵, Chantal Kayitesi⁵, Vlasta LaValle⁵, Yuting Lu⁵, Sarah Luthern⁵, Jordan Marchewka (Schneider)⁵, Brittani Martino⁵, Roseann McNamara⁵, Christian Nambu⁵, Susan Nelson⁵, Marjorie Noone⁵, Christine Ommerborn⁵, Lois Chris Pacheco⁵, Nicole Phan⁵, Falisha A. Porto⁵, Edward Ryan⁵, Kathleen Selleck⁵, Sue Slaughenhaupt⁵, Kimberly Smith Sheppard⁵, Elizabeth Suschana⁵, Vivine Wilson⁵, Galit Alter⁶, Alejandro Balazs⁶, Julia Bals⁶, Max Barbash⁶, Yannic Bartsch⁶, Julie Boucau⁶, Josh Chevalier⁶, Fatema Chowdhury⁶, Kevin Einkauf⁶, Jon Fallon⁶, Liz Fedirko⁶, Kelsey Finn⁶, Pilar Garcia-Broncano⁶, Ciputra Hartana⁶, Chenyang Jiang⁶, Paulina Kaplonek⁶, Marshall Karpell⁶, Evan C. Lam⁶, Kristina Lefteri⁶, Xiaodong Lian⁶, Mathias Lichterfeld⁶, Daniel Lingwood⁶, Hang Liu⁶, Jinqing Liu⁶, Natasha Ly⁶, Ashlin Michell⁶, Ilan Millstrom⁶, Noah Miranda⁶, Claire O'Callaghan⁶, Matthew Osborn⁶, Shiv Pillai⁶, Yelizaveta Rassadkina⁶, Alexandra Reissis⁶, Francis Ruzicka⁶, Kyra Seiger⁶, Libera Sessa⁶, Christianne Sharr⁶, Sally Shin⁶, Nishant Singh⁶, Weiwei Sun⁶, Xiaoming Sun⁶, Hannah Ticheli⁶, Alicja Trocha-Piechocka⁶, Daniel Worrall⁶, Alex Zhu⁶, George Daley⁷, David Golan⁷, Howard Heller⁷, Arlene Sharpe⁷, Nikolaus Jilg⁸, Alex Rosenthal⁸, Colline Wong⁸

¹Department of Emergency Medicine, Massachusetts General Hospital, Boston, MA, USA. ²Massachusetts General Hospital Cancer Center, Boston, MA, USA. ³Division of Infectious Diseases, Department of Medicine, Massachusetts General Hospital, Boston, MA, USA. ⁴Massachusetts General Hospital Center for Immunology and Inflammatory Diseases, Boston, MA, USA. ⁵Massachusetts General Hospital, Boston, MA, USA. ⁶Ragon Institute of MGH, MIT and Harvard, Cambridge, MA, USA. ⁷Harvard Medical School, Boston, MA, USA. ⁸Brigham and Women's Hospital, Boston, MA, USA.