

Title: Impact of previous COVID-19 on immune response after a single dose of BNT162b2 SARS-CoV-2 vaccine

Authors: María Velasco¹, M^a Isabel Galán², M^a Luisa Casas³, Elia Pérez-Fernández⁴, Beatriz González-Piñero⁵, Virgilio Castilla⁶, Carlos Guijarro⁷. Working Group Alcorcón COVID-19.

¹ Infectious Diseases and Research Unit, Hospital Universitario Fundación Alcorcón, Madrid, Spain. Electronic address: mvelasco@fhalcorcon.es

² Occupational Health Unit, Hospital Universitario Fundación Alcorcón, Madrid, Spain

³ Laboratory Unit, Hospital Universitario Fundación Alcorcón, Madrid, Spain.

⁴ Research Unit, Hospital Universitario Fundación Alcorcón, Madrid, Spain.

⁵ Information System Unit, Hospital Universitario Fundación Alcorcón, Madrid, Spain.

⁶ Medical Director, Hospital Universitario Fundación Alcorcón, Madrid, Spain.

⁷ Professor of Medicine. Rey Juan Carlos University. Internal Medicine Unit. Research, Innovation and Education Coordinator. Hospital Universitario Fundación Alcorcón, Madrid, Spain

Running title: Single-dose vaccine response after COVID

Key words: vaccine, SARS-CoV-2, immune response, health care workers COVID-19

Corresponding author

María Velasco
mvelasco@fhalcorcon.es
Infectious Diseases. Research Unit.
Hospital Universitario Fundación Alcorcón.
C/Budapest nº1, 28922 Alcorcón.Madrid. Spain

Alternate corresponding author.

Carlos Guijarro
carlos.guijarro@urjc.es
Professor of Medicine. Rey Juan Carlos University.
Internal Medicine Unit. Research, Innovation and Education Coordinator.
Hospital Universitario Fundación Alcorcón.
C/Budapest nº1, 28922 Alcorcón.Madrid. Spain

Abstract

Immune response after a single-dose of BNT162b2 vaccine is markedly increased in health care workers with previous SARS-CoV2 exposure, as assessed by positive SARS-CoV2 IgG, particularly after moderate-severe COVID-19. These data may inform the priority of the boosting mRNA second dose in times of vaccine shortage.

Introduction

Vaccination against SARS-Cov2 is proposed by the WHO as the main option, at the present time, to control the COVID-19 pandemic. However, limited vaccine supply reduces the ability to reach a substantial proportion of individuals and delay the expectations of herd immunity[1]. The standard vaccination protocol for mRNA vaccines includes a 2 dose vaccine administration 3-4 weeks apart[2]. In this setting, a strategy to use single-dose of mRNA vaccines for some individuals could accelerate the achievement of this goal. Data on immune responses to single-dose vaccination with BNT162b2 are limited to few observational studies with small number of patients [3–5]. Moreover, impact of previous natural infection on vaccine response is not well known. We thus sought to evaluate the immune responses after a single dose m-RNA vaccination according to different groups of previous SARS-CoV2 exposure and clinical COVID-19 presentation.

Methods

A random sample of 642 health-care workers (HCW) enrolled in a previous hospital-wide seroprevalence study of 2.590 HCW (first survey April 2020 and second survey November 2020[6]) were invited to participate in this study, based on stratification of 3 groups according to their seropositive status in both surveys: 1) Naïve SARS-Cov2 patients: Seronegative in both surveys (SARS-Sero -/-) ; 2) Transient seropositivity: seropositive in first survey and negative in second survey (SARS-sero +/-) and 3) Persistent seropositivity: seropositive in both surveys (SARS-sero +/+). In addition, seropositive HCW were further classified according to the severity of the previous COVID-19 in 1) asymptomatic COVID: no symptoms and serologic diagnosis of SARS-CoV-2 infection; 2) moderate COVID: mild to moderate declared symptoms attended as out-patients; and 3) severe COVID: HCW that required hospital admission-

A blood sample from HCW who have received the first dose of the mRNA BNT162b2 vaccine (Pfizer/BioNTech) was obtained just before the administration of the second dose of vaccine (21 days after the first dose), once they had signed written informed consent.

Previous COVID-19 disease was defined if any of the following diagnostic test was positive: RT-PCR against SARS-CoV-2, SARS-CoV-2 antigen detection or positive SARS-CoV-2 IgG (regardless of symptoms).

Laboratory procedures

The SARS-cov-2 IgG assay used is a chemiluminescent immunoanalysis of microparticles (CMIA) used for the quantitative detection of IgG antibodies against the Spike protein (RBD domain) of the SARS CoV-2 virus in the Architect system of the Company ABBOTT Diagnostics. The performance of diagnostic accuracy of immunoassay was tested following the manufactures' instructions, the cut-off point is <50 arbitrary Units/ml (AU/ml).

Statistical analysis.

Results are expressed as median and interquartile range (IQR). Demographics of COVID-19 and no COVID-19 groups were compared by univariate analysis using chi squared test and t Student test (Supplementary Table 1).

Anti-spike IgG values were described using centrality statistics as mean, median and geometric mean and dispersion measures as standard deviation and interquartile range. We used univariate non parametric test, U Mann Whitney and Kruskal Wallis test, to compare anti-spike IgG titers between groups. Pairwise comparisons were adjusted by the Bonferroni method.

Data were evaluated with the Statistical Package for Social Sciences (SPSS 17 IBM Armonk, New York) R 3.4.4 software (<https://cran.r-project.org/bin/windows/base/old/3.4.4/>.)

The study protocol was approved by the independent ethics research committee of the hospital.

Results

A total of 642 HCW were invited to participate in the study, and 641 accepted (99.8%). They were 77.3% women and mean age was 45.8 (SD 10.7) years. HCW demographics are shown in Supplementary Table 1. There were not significant differences in the demographics variables among the groups except for a lower percentage of tobacco use (14.8 vs 21.5%, $p=0.029$) and higher percentage of obesity (11.6 vs 6.2%, $p=0.014$) in patients who developed symptomatic COVID-19.

Median Ig G against spike SARS-CoV-2 titers were about 20-fold higher after the first dose of vaccine in HCW with previous SARS-COV2 antibodies (median 22,267.3 AU/ml, IQR 3,972.5 – 3,7091.2) than those SARS-CoV2 naïve (median 1,022.3 AU/ml, IQR 545.7 – 1,760.0, $p<0.001$), figure 1A, Supplementary Table 2.

Naïve SARS-CoV2 individuals, transient seropositive and persistent seropositive subjects exhibited progressively higher anti Spike-IgG titers 3 weeks after the first dose of the vaccine (median 1,022.3 AU, IQR 545.7 – 1,760; median 3,860.0 AU ; IQR 781.8 – 18,088 and median 34,551.6 AU, IQR 23,432 – 48,597 respectively; $p<.001$ for all comparisons; figure 1B). In other words, as compared with naïve SARS-CoV-2 subjects, transient seropositive patients showed about a 4-fold, and persistent seropositive patients about a 34-fold higher level of IgG antibodies against SARS-CoV-2 Spike protein.

Previous COVID-19 clinical severity was also associated with increased titers of IgG 3 weeks after the first dose of the vaccine: asymptomatic (median 15,386.4 AU/ml , IQR 1,661.8 – 31,260.9), mild- moderate (median 24,388.8 AU/ml, IQR 7,158.3 – 37,355.5) and severe (median 43,671.7 AU/ml ; IQR 20,463.4 – 79,923.7) Figure 1C

A total of 13 subjects developed symptomatic COVID-19 after the first dose of the vaccine, showing a median anti Spike-IgG title of 2,485.8 AU/ml, IQR 1,144.6-9,842.9). Since it is impossible to discern the relative contribution of the vaccine and

post-vaccine SARS-CoV2 infection to the IgG titre, no comparison was made between this group and others.

Discussion

Our serological evaluation in HCW shows a dramatic differential response 3 weeks after a single dose of the BNT162b2 mRNA vaccine according to previous exposure to SARS-CoV2 and serological status. So far, this is the large study on immune response after first dose of BNT162b2 vaccine. Of note patients with previous history of COVID-19 exposure reach at least one order of magnitude higher titers of anti Spike-IgG. Although we have not assessed the presences of neutralizing antibodies, our results are strikingly similar to those recently reported by Predecki [7] and Saadat [8]. This robust serologic response is highly correlated to the presence of neutralizing antibodies. However, we have no data regarding the duration of the serologic response nor the degree of protection against SARS-CoV2 infection.

Our work provides some additional interesting data. First HCW who had lost their SARS-CoV2 antibodies exhibit a lower response, that might be insufficient to provide SARS-CoV2 protection[4,9]. On the other hand, the combination of clinical COVID-19 and the presence of anti Spike-IgG SARS-COV-2 antibodies before vaccination are strong predictors of a robust serologic response to a single dose of BNT162b2 mRNA vaccine that may make less necessary the boost associated with the second dose.

There is current controversy regarding the most efficient strategy regarding the use of available vaccines in order to offer a wider population protection[10–12]. Whether enhanced single dose mRNA vaccine-induced serologic response among previously seropositive individuals will show a lasting response as compared to boosted vaccines is currently unknown. As no trial has evaluated the medium term protective effects of a single-dose mRNA protocol, health policy makers rely on surrogate markers such as SARS-CoV-2 seropositivity prior to vaccination, for this difficult decision. Our results suggest that deferring the second dose of the vaccine to some individuals with a predictable strong serologic response may not a high risk

strategy for them, offering the option for vaccination of other individuals at risk until a wider vaccine availability allows for a standard 3-4 week interval between mRNA vaccine doses as this is the protocol that has been tested in clinical trials.

Acknowledgments

We thank all workers of the Hospital Universitario Fundación Alcorcón for their everyday work and cooperation in this study.

References

1. Organization WH. Background document on the mRNA vaccine BNT162b2 (Pfizer-BioNTech) against COVID-19: background document to the WHO interim recommendations for use of the Pfizer–BioNTech COVID-19 vaccine, BNT162b2, under emergency use listing, 14 January 2021. **2021**; Available at: <https://apps.who.int/iris/handle/10665/338671>. Accessed 8 March 2021.
2. Polack FP, Thomas SJ, Kitchin N, et al. Safety and Efficacy of the BNT162b2 mRNA Covid-19 Vaccine. *N Engl J Med* **2020**; Available at: <https://www.ncbi.nlm.nih.gov/pmc/articles/PMC7745181/>. Accessed 8 March 2021.
3. Robust spike antibody responses and increased reactogenicity in seropositive individuals after a single dose of SARS-CoV-2 mRNA vaccine | medRxiv. Available at: <https://www.medrxiv.org/content/10.1101/2021.01.29.21250653v1>. Accessed 8 March 2021.
4. Manisty C, Otter AD, Treibel TA, et al. Antibody response to first BNT162b2 dose in previously SARS-CoV-2-infected individuals. *The Lancet* **2021**; 0. Available at: [https://www.thelancet.com/journals/lancet/article/PIIS0140-6736\(21\)00501-8/abstract](https://www.thelancet.com/journals/lancet/article/PIIS0140-6736(21)00501-8/abstract). Accessed 6 March 2021.
5. Prendecki M, Clarke C, Brown J, et al. Effect of previous SARS-CoV-2 infection on humoral and T-cell responses to single-dose BNT162b2 vaccine. *The Lancet* **2021**; :S014067362100502X.
6. Galan I, Velasco M, Casas ML, et al. Hospital-Wide SARS-CoV-2 seroprevalence in health care workers in a Spanish teaching hospital. *Enferm Infecc Microbiol Clin*. 2020 Dec 18. doi: 10.1016/j.eimc.2020.11.015 [Epub ahead of print]
7. Prendecki M, Clarke C, Brown J, et al. Effect of previous SARS-CoV-2 infection on humoral and T-cell responses to single-dose BNT162b2 vaccine. *The Lancet* **2021**; 0. Available at: [https://www.thelancet.com/journals/lancet/article/PIIS0140-6736\(21\)00502-X/abstract](https://www.thelancet.com/journals/lancet/article/PIIS0140-6736(21)00502-X/abstract). Accessed 6 March 2021.
8. Saadat S, Tehrani ZR, Logue J, et al. Binding and Neutralization Antibody Titers After a Single Vaccine Dose in Health Care Workers Previously Infected With SARS-CoV-2. *JAMA* **2021**; Available at: <https://doi.org/10.1001/jama.2021.3341>. Accessed 6 March 2021.
9. Bartsch YC, Fischinger S, Siddiqui SM, et al. Discrete SARS-CoV-2 antibody titers track with functional humoral stability. *Nat Commun* **2021**; 12:1018.
10. Bieniasz P. The case against delaying SARS-CoV-2 mRNA vaccine boosting doses. *Clinical Infectious Diseases* **2021**; Available at: <https://doi.org/10.1093/cid/ciab070>. Accessed 8 March 2021.
11. Moore JP. Approaches for Optimal Use of Different COVID-19 Vaccines: Issues of Viral Variants and Vaccine Efficacy. *JAMA* **2021**; Available at: <https://doi.org/10.1001/jama.2021.3465>. Accessed 6 March 2021

12. Kadire SR, Wachter RM, Lurie N. Delayed Second Dose versus Standard Regimen for Covid-19 Vaccination. *New England Journal of Medicine* **2021**; 384:e28.

Supplementary tables

Table 1. Participant characteristics

VARIABLE	Total n=641	No COVID-19 n=284	COVID-19 n=357	Univariate test
Women	495 (77.2%)	227 (79.9%)	268 (75.1%)	0.145
Age (mean ± SD)* years	45.5 ± 10.6	45.4 ± 10.4	45.6 ± 10.9	0.747
Clinical conditions				
Tobacco use	114 (17.8%)	61 (21.5%)	53 (14.8%)	0.029
Chronic lung disease	74 (11.5%)	37 (13%)	37 (10.4%)	0.294
High blood pressure	44 (6.9%)	21 (7.4%)	23 (6.4%)	0.636
Obesity	55 (8.6%)	33 (11.6%)	22 (6.2%)	0.014
Other cardiovascular disease	25 (3.9%)	8 (2.8%)	17 (4.8%)	0.206
Diabetes mellitus	18 (2.8%)	7 (2.5%)	11 (3.1%)	0.639
Immunodeficiency	10 (1.6%)	6 (2.1%)	5 (1.4%)	0.757
Cancer	5 (0.8%)	4 (1.4%)	1 (0.3%)	0.176
Liver disease	2 (0.3%)		2 (0.6%)	0.506
Chronic kidney disease	1 (0.2%)	1 (0.4%)		0.443
Previous SARS-CoV-2 infection				
Total	357		357	
Asymptomatic	132		132	
Symptomatic Moderate COVID	196		196	
Symptomatic Severe COVID	29		29	

SD: standard deviation

COVID-19: HCW with previous SARS-CoV-2 documented infection

Table 2. SARS-CoV-2 titer by serologic and symptomatic group

SUBGROUP	N	Geometric mean	Mean	Median	SD	IQR	Univariate test	Univariate post hoc test adjusted by Bonferroni Method		
								vs Naïve	vs Transient	vs Asymptomatic
TOTAL	641	3925.5	15161.2	2407.8	20949.7	845.4 - 26410				
Global serology										
SARS-CoV-2 Naïve	284	992.4	2017.5	1022.3	4404.1	545.7 - 1760	<0.001*			
Previous SAR-CoV2 seropositivity	357	11721.3	25617.2	22267.3	22937.8	3972.5 - 37091.2				
Seropositive subgroups										
Transient seropositivity	150	3664.8	10503.2	3860.0	13553.5	781.8 - 18088.1	<0.001**	<0.001*		
Persistent seropositivity	194	31526.0	38620.9	34551.6	21250.2	23432 - 48597		<0.001*	<0.001*	
Clinical COVID-19 after first dose of the vaccine	13	3039.0	5955.0	2485.8	7571.0	1144.6 - 9842.9				
COVID19 Symptoms										
Asymptomatic	132	7769.4	19454.7	15386.4	19812.6	1661.8 - 31260.9	<0.001*			
Symptomatic Moderate COVID	196	13365.3	26532.2	24388.8	21931.8	7158.3 - 37355.5				0.005*
Symptomatic Severe COVID	29	27699.5	47483.7	43671.7	28689.2	20463.4- 79923.7				<0.001*

*Univariate U Mann Whitney test

**Univariate Kruskal Wallis test

SD: Standard deviation; IQR: interquartile range

Previous SARS-CoV2 anti Spike IgG+ Transient seropositivity: seropositive in first survey and negative in second survey (SARS-sero +/-)

Previous SARS-CoV2 anti Spike IgG+ Persistent seropositivity: seropositive in both surveys (SARS-sero ++).

Figure 1 legend : Serological response to one dose of the BNT162b2 mRNA COVID-19 vaccine in individuals with and without laboratory-confirmed previous SARS-CoV-2 infection and serological status.

Panel A. SARS-COV2 naïve patients versus patients with previous SARS-COV2 infection. Patients with a previous SARS-COV2 infection had about a 20-fold higher titer than SARS-CoV2 naïve cases 3 weeks after the first dose of BNT162b2 mRNA COVID-19 vaccine

Panel B. SARS-COV2 naïve patients, post vaccine COVID-19 cases, and previous SARS-CoV2 seropositive individuals (transient and persistent).

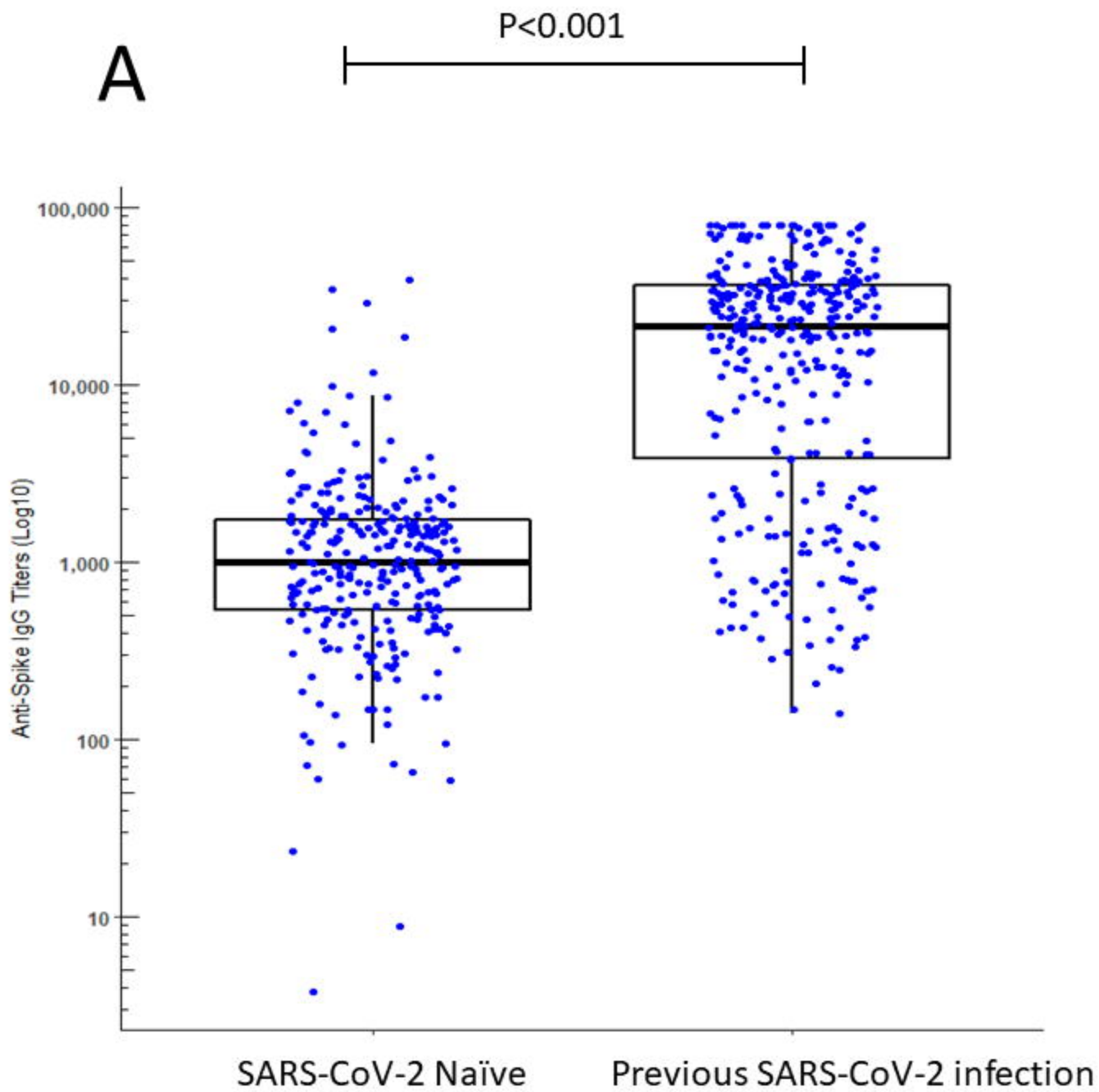
As compared to naïve SARS-CoV2 subjects, transient seropositive patients showed about a 4 fold, and persistent seropositive patients about a 34 fold higher level of IgG antibodies against SARS-CoV2 Spike protein titres 3 weeks after the first dose of BNT162b2 mRNA COVID-19 vaccine

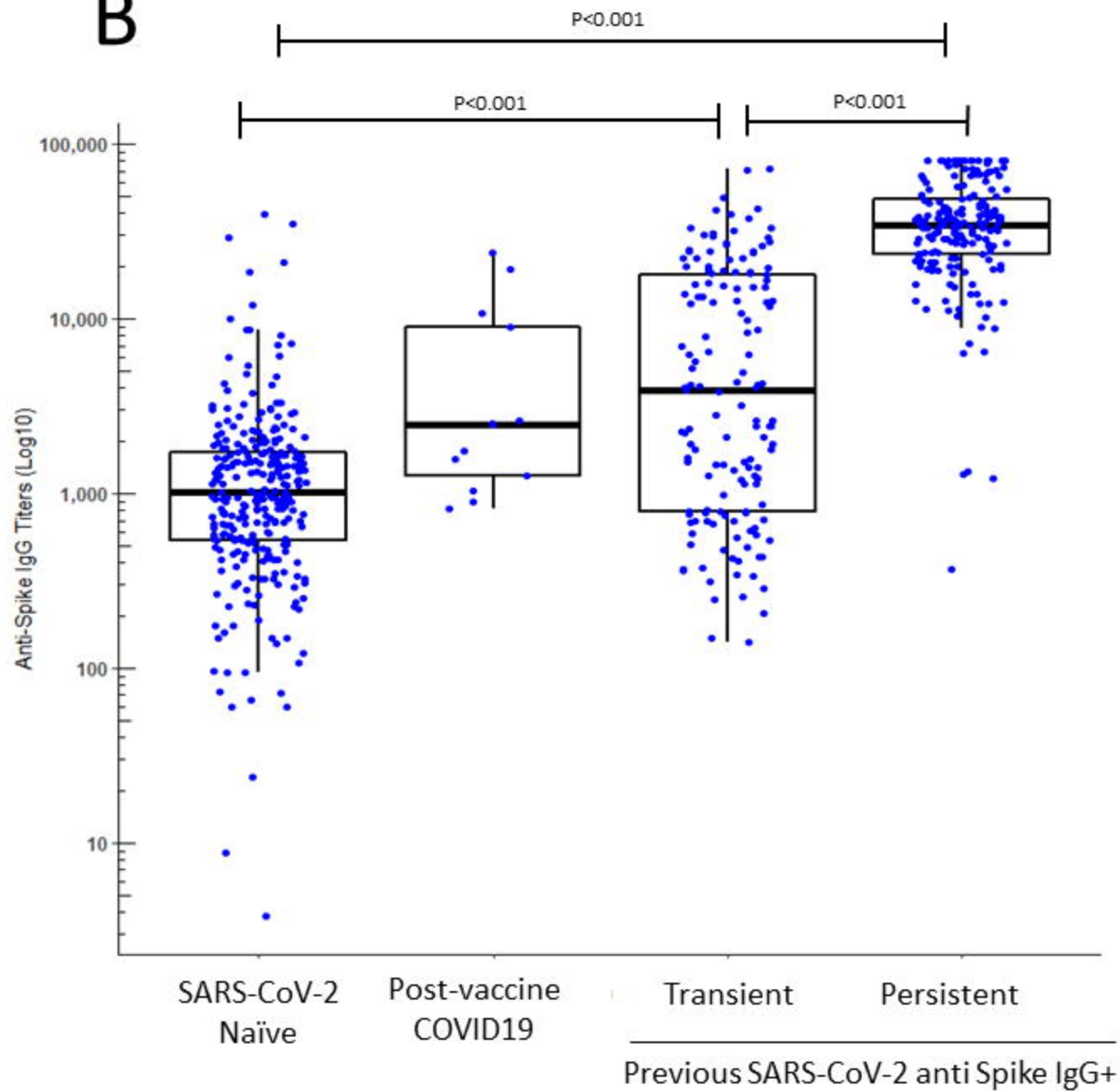
Panel C. SARS-COV2 naïve patients, and COVID-19 clinical severity (asymptomatic, mild-moderate, and severe COVID-19 cases).

As compared to naïve SARS-CoV2 subjects, asymptomatic, mild-moderate and severe COVID cases exhibited about a 15-, 24- and 44-fold higher of IgG antibodies against SARS-CoV2 Spike protein titres 3 weeks after the first dose of BNT162b2 mRNA COVID-19 vaccine.

Statistical analysis: U Mann Whitney's test, Bonferroni corrected.

A



B

C

