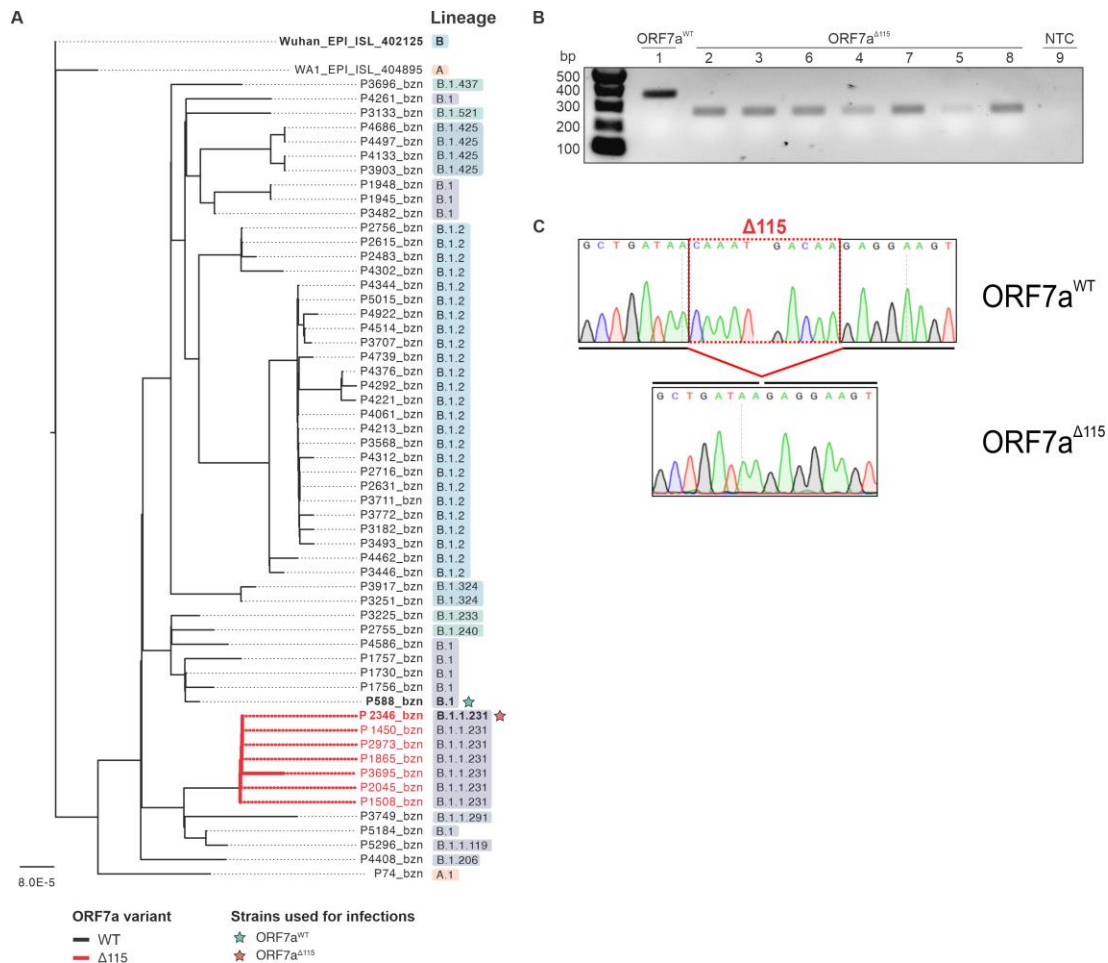
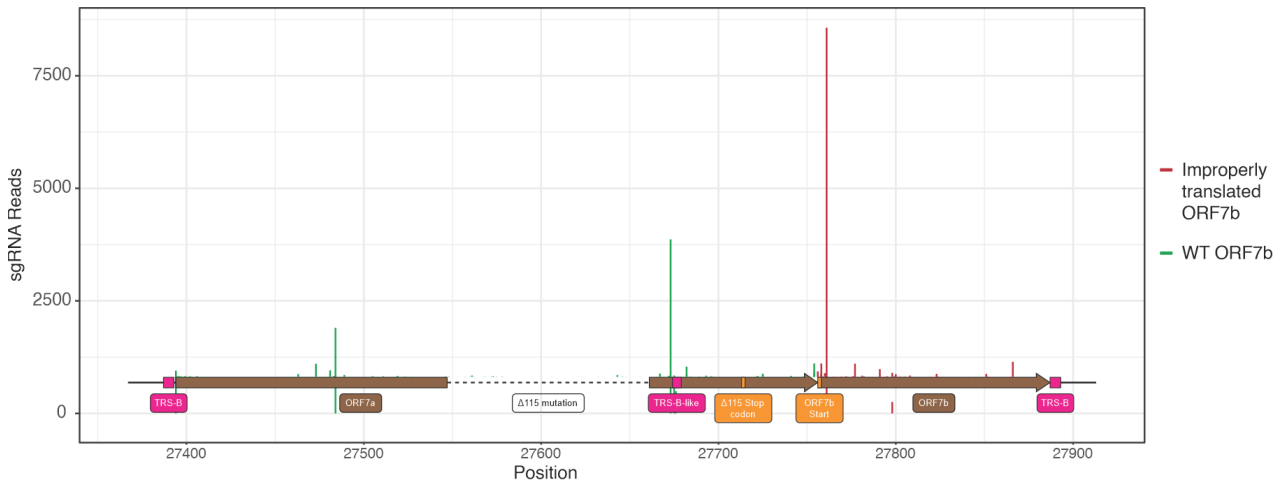


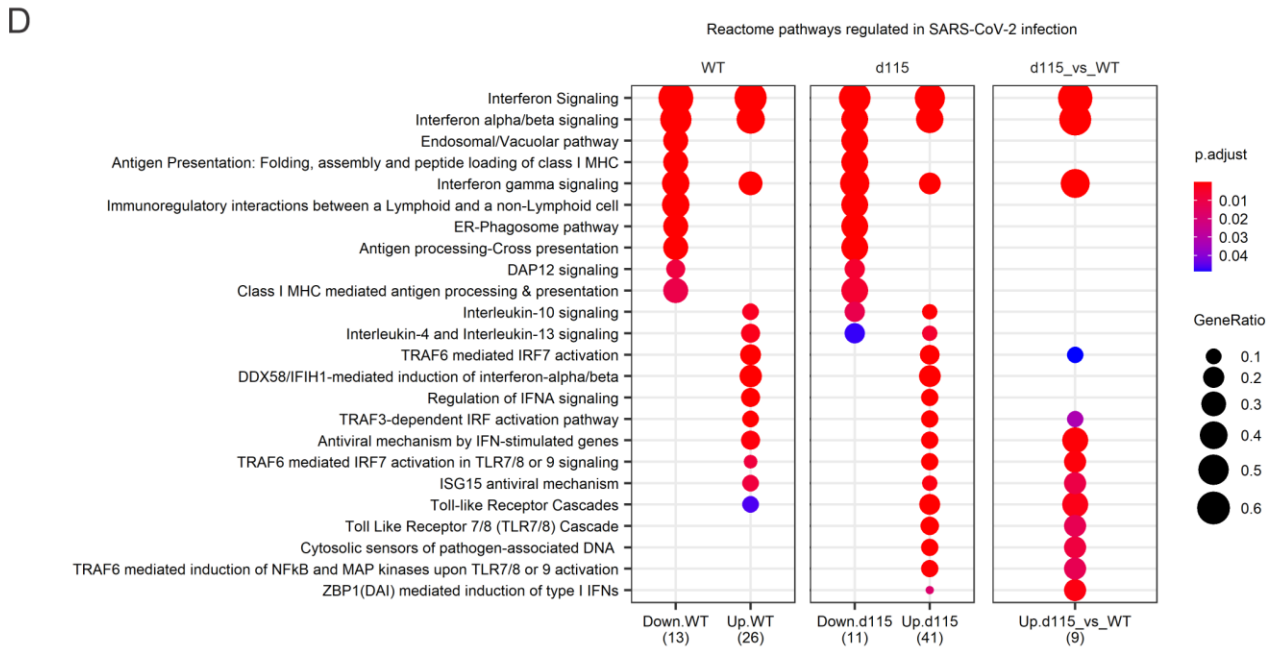
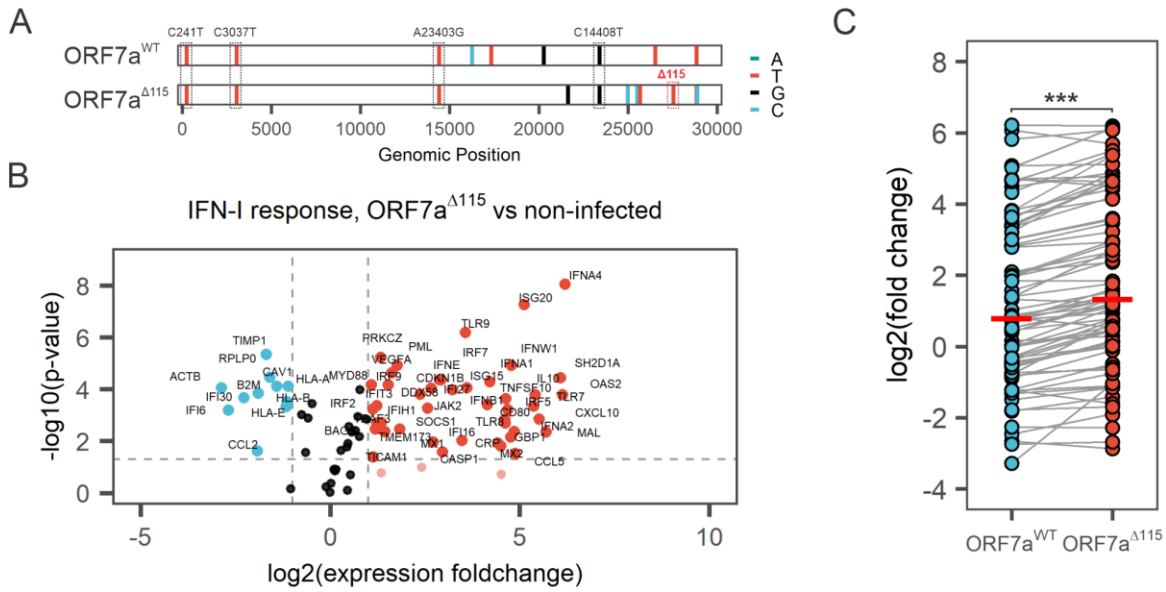
Supplemental Data



Supplemental Figure S1, Phylogenetic and mutational analysis of ORF7a gene sequences in Bozeman SARS-CoV-2 isolates. Related to main Figure 1. **A)** A maximum-likelihood phylogenetic tree indicates that ORF7a ^{$\Delta 115$} strains form a monophyletic clade (red branches). Viral isolate P588 (teal star) was chosen as a "wildtype" control in our experiments. This strain shares a recent common ancestor with the predominant ORF7a ^{$\Delta 115$} clade. SARS-CoV-2 lineages were assigned using pangolin utility (cov-lineages.org, (Rambaut, Andrew et al., 2020)). **B)** RT-PCR with primers targeting regions that flank the ORF7a deletion. **C)** All PCR products in (B) were Sanger sequenced. Representative sequencing chromatograms are shown. Deleted region is shown with dotted red box.



Supplemental Figure S2, Mapping TRS-B sites required for ORF7a and ORF7b discontinuous sgRNA transcription. Related to Main Figure 2F-H. Direct RNA sequencing data published by Kim et al was used to map TRS-B sites in SARS-CoV-2 ORF7a and ORF7b genes (Kim et al., 2020). Vertical lines indicate number of reads spanning the junction between TRS-L and “body” of the gene. Dashed line indicate region deleted in ORF7a^{Δ115} strain. The deletion does not remove any of the mapped TRS-B sites suggesting that it has not affected ORF7b sgRNA transcription.



Supplemental Figure S3, Related to Main Figure 3. IFN-I response and gene set enrichment analysis. **A)** Genome sequences of ORF7a^{WT} and ORF7a^{Δ115} are compared to Wuhan-Hu-1 reference sequence. Colored lines mark differences to reference genome. Mutations that define haplotype of B.1 SARS-CoV-2 lineage are boxed. **B)** Volcano plot depicting IFN-I response in HEK 293T-hACE2 cells infected with ORF7a^{Δ115} SARS-CoV-2 strain at MOI = 0.05. RNA was extracted from infected cells 24 hpi and reverse transcribed. Expression of IFN-I response genes was studied using RT-qPCR array targeting 91 human transcripts (88 targets and 3 references). Experiment was performed in 3 biological replicates. Dashed lines show regulation (≥ 2 -fold) and statistical significance thresholds (p -value < 0.05). Each dot represents mean ($n = 3$) normalized expression of a single gene relative to non-infected host. Genes that passed the threshold are labeled. **C)** Plot showing distribution of $\log_2(\text{expression fold change})$ values in ORF7a^{WT} and ORF7a^{Δ115} infection vs non-infected control. Each dot represents relative normalized expression for one transcript targeted with the RT-qPCR array. Gray lines connect values for the same transcript in the infection with ORF7a^{WT} and ORF7a^{Δ115} variants. Horizontal red bar shows median value. Median ISG activation between two infections was compared using Wilcoxon signed-rank test (***, p -value < 0.001) **D)** List of IFN-I response genes that were significantly regulated (p -value < 0.05 , ≥ 2 -fold change in expression) upon infection with ORF7a^{Δ115} and ORF7a^{WT} (vs non-infected control) were analyzed for enrichment of associated Reactome Pathways (Jassal et al., 2019; Zhou, Z. et al., 2020). Gene set enrichment analysis (GSEA) was performed using clusterProfiler package in RStudio (Yu and He, 2016; Yu et al., 2012). *Down.WT* – genes downregulated during infection with ORF7a^{WT}; *Up.WT* – genes upregulated during infection with ORF7a^{WT}; *Down.d115* – Reactome pathways enriched in genes downregulated during infection with ORF7a^{Δ115}; *Up.d115* – genes upregulated during infection with ORF7a^{Δ115}. *Up.d115_vs_WT* – Reactome pathways enriched in genes upregulated during infection with ORF7a^{Δ115} vs ORF7a^{WT} (**Figure 3E**).