

Supplementary Table S1. Demographic and clinical features of enrolled subjects.

Case ID	Gender	Age at first dose vaccination	COVID-19	Time from COVID-19 resolution to first dose vaccination (months)
Ex-COVID-19				
EC1	F	51	severe	7
EC2	F	52	mild	7
EC3	M	60	severe	8.5
EC4	M	65	moderate	9
EC5	F	53	moderate	8
EC6	M	37	moderate	8.5
EC7	F	54	mild	8
EC8	M	61	critical	9
EC9	M	64	critical	9
EC10	F	51	mild	6
EC11	F	44	moderate	8
Mean (years)				
	-	53,8	-	-
SD (± years)				
	-	8,5	-	-
Non-COVID-19				
NC1	F	35	no	na
NC2	F	61	no	na
NC3	F	44	no	na
NC4	F	41	no	na
NC5	M	41	no	na
NC6	M	32	no	na
NC7	F	37	no	na
NC8	F	29	no	na
NC9	F	46	no	na
NC10	F	24	no	na
NC11	M	53	no	na
Mean (years)				
	-	40,3	-	-
SD (± years)				
	-	10,7	-	-

na denotes not applicable

Supplementary Table S2. List of all fluorochrome mAbs used for flow cytometric analysis of antigen specific T cells.

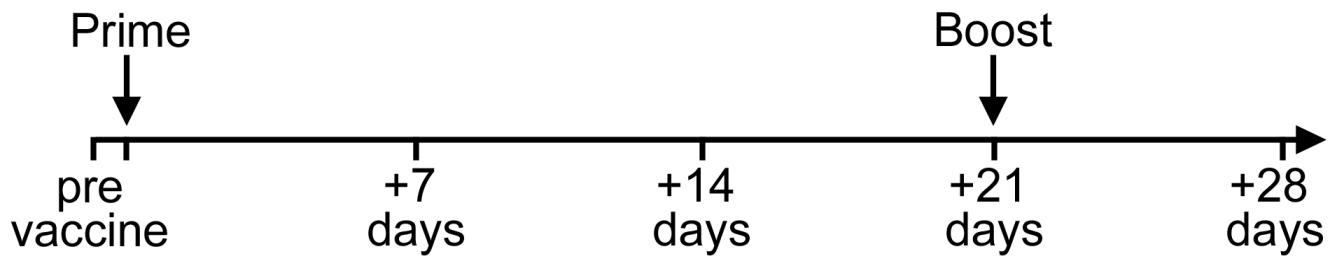
Antigen	Fluorochrome	Clone	Company
TNF- α	FITC	6401.1111	BDBioscience
CD154	PE	TRAP1	BDBioscience
CD3	PerCP	SK7	BDBioscience
CD4	PE-Cy7	SK3	Invitrogen
CD8	Super Bright 600	SK1	eBioscience™
IL-2	APC	MQ1-17H12	BDBioscience
IFN- γ	Pacific Blue	B27	BioLegend
L/D	Fixable Viability Stain 780		BDBioscience

Supplementary Table S3. List of all fluorochrome mAbs used for flow cytometric analysis of immune checkpoint expression by antigen specific T cells.

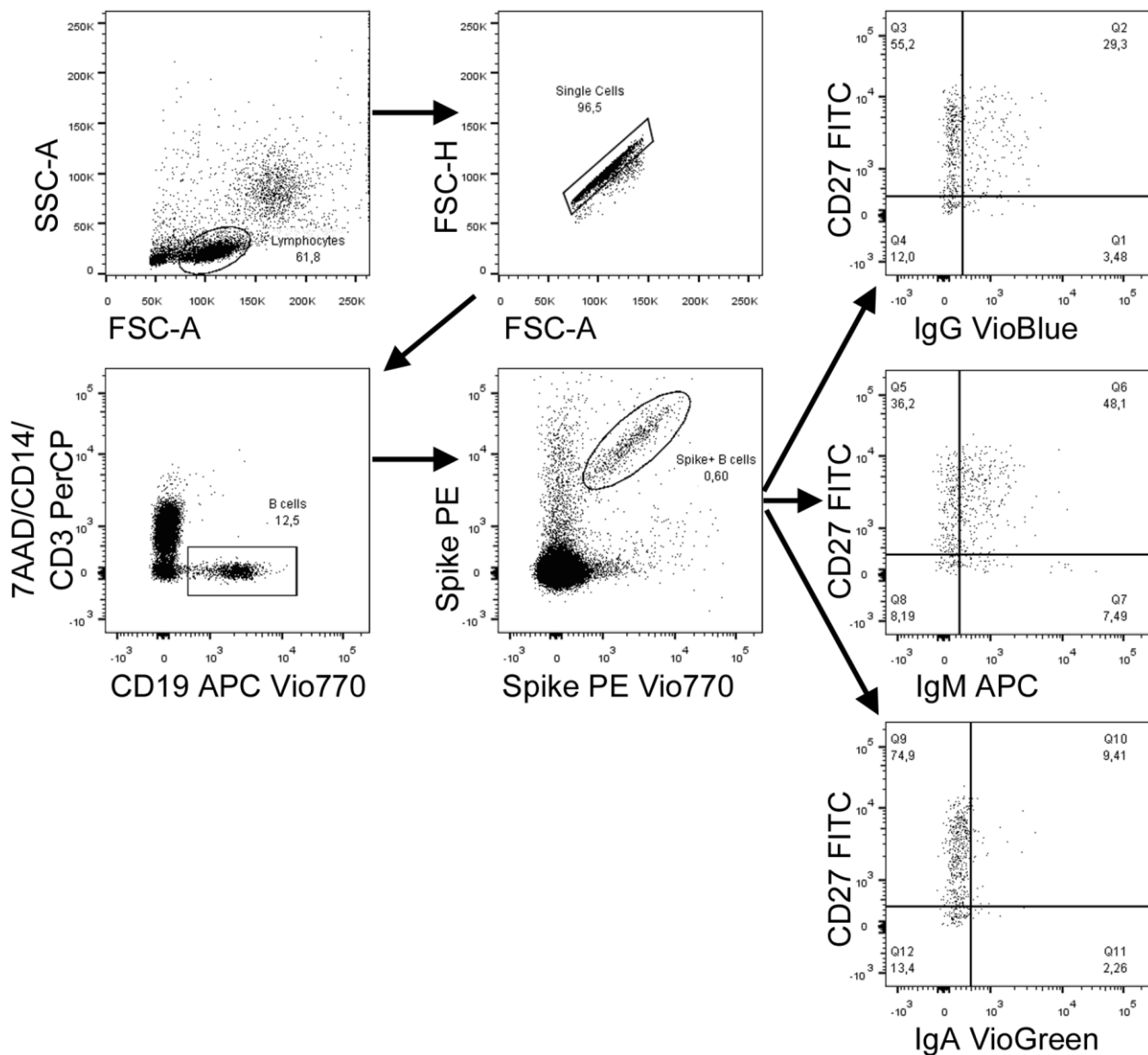
Antigen	Fluorochrome	Clone	Company
TNF- α	FITC	MAb11	BDBioscience
IFN- γ	FITC	25723.11	BDBioscience
IL-2	FITC	5344.111	BDBioscience
CD8	PerCP	SK1	BDBioscience
CD4	eFluor506	RTA-T4	Invitrogen
CD3	Pacific Blue	UCHT1	BDBioscience
PD1 (CD279)	PE-Cy7	EH12.2H7	BioLegend
TIGIT	APC	MBSA43	Invitrogen
CD154	PE	TRAP1	BDBioscience
L/D	Fixable Viability Stain 780		BDBioscience

Supplementary Table S4. List of all fluorochrome mAbs used for flow cytometric analysis of antigen specific B cells.

Antigen	Fluorochrome	Clone	Company
CD19	APC-Vio770	LT19	Miltenyi
CD27	VioBright FITC	M-T271	Miltenyi
IgA	VioGreen	IS11-8E10	Miltenyi
IgG	VioBlue	IS11-3B2.2.3	Miltenyi
CD14	PerCP	TÜK4	Miltenyi
IgM	APC	PJ2-22H3	Miltenyi
CD3	PerCP	BW264/56	Miltenyi
7AAD			Miltenyi
Spike	PE		Miltenyi
Spike	PE-Vio770		Miltenyi

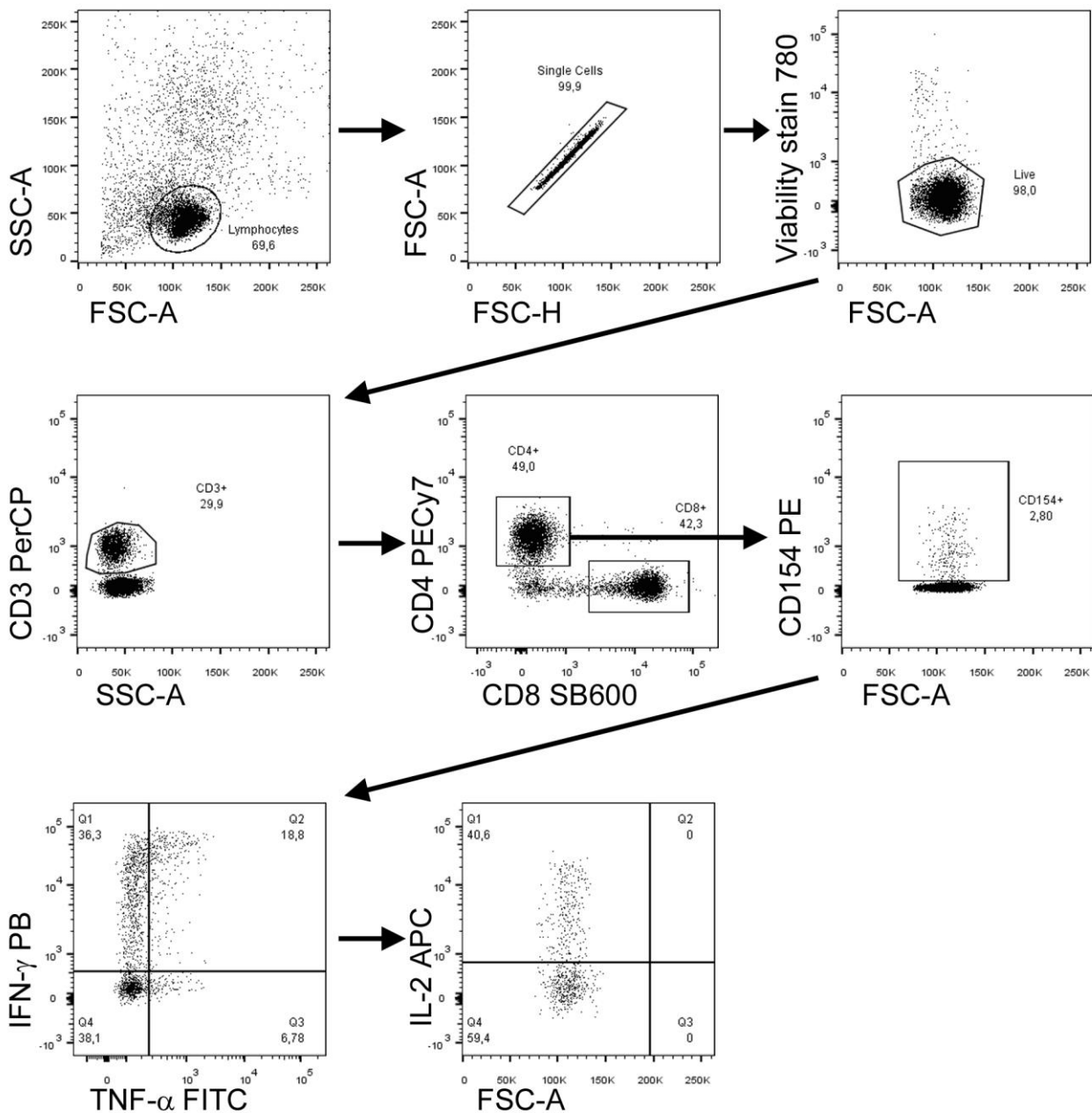


Supplementary Figure S1. Vaccination schedule and time points of analysis



Supplementary Figure 2: Gating strategy for the identification of spike-specific B cells

Lymphocytes were gated based on physical parameters (FSC-SSC), then doublets were removed using FSC-A and FSC-A parameters. PerCP was used as dump channel for the exclusion of dead cells (7AAD), CD3+ T cells and CD14 monocytes. B cells were identified as CD19+. B cells binding PE- and PE Vio770-conjugated spike protein were then identified as spike-specific. Among spike-specific B cells we evaluated CD27 expression associated to IgG, IgM and IgA.



Supplementary Figure 3: Gating strategy for the identification of spike-specific T cells

Lymphocytes were gated based on physical parameters (FSC-SSC), then doublets were removed using FSC-A and FSC-H parameters. Dead cells were excluded using viability stain 780. T cells were identified as CD3+. We then identified CD4+ T cells. Among these, we identified CD154 expressing cells. CD4+CD154+ T cells were then evaluated for IFN- γ , TNF- α and IL-2 expression.