

Supplementary Materials for

- **Multi-Omic Profiling of Plasma Identify Biomarkers and Pathogenesis of COVID-19 in Children**

Chong Wang, Wanshan Ning, Xufang Li, Sitang Gong, Di Wu, Muhan Huang, Yujie Gou, Shanshan Fu, Fengxia Yang, Chunxiao Fang, Yu Gong, Yujie Ren, Ruyi Yang, Yang Qiu, Yu Xue, Yi Xu, Xi Zhou.

*Corresponding author. Email: zhouxi@wh.iov.cn (X.Z.), xueyu@hust.edu.cn (Y.X.), xuyi70@163.com (Y.Xu.), and yangqiu@wh.iov.cn (Y.Q.)

This PDF file includes:

Figs. S1 to S4

Other Supplementary Materials for this manuscript include the following:

Datasheet Table S1 to S16

Figure S1

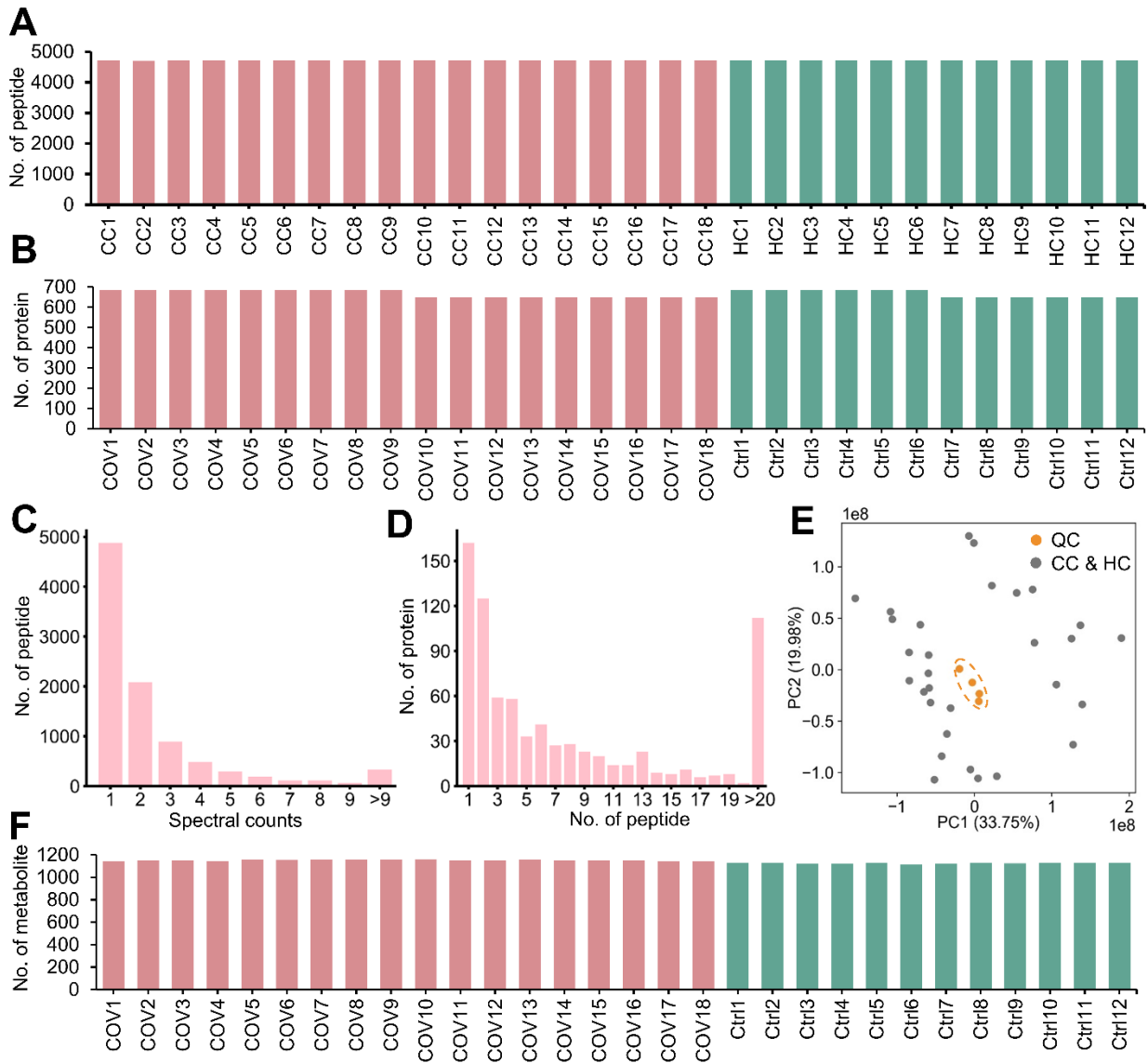


Fig. S1.

Proteomic and metabolomic profiling of plasma from CC and HC cases. **A,B** The distribution of numbers of quantified (a) peptides and (b) proteins in the 30 plasma samples. **C** The distribution of MS/MS spectral counts of quantified peptides. **D** The distribution of peptide numbers of quantified proteins. **E** PCA analysis of the 30 metabolomic data and 4 quality controls (QCs). We pipette 10 μ L of each sample to pool a QC sample. **F** The distribution of MS/MS spectral counts of quantified metabolites.

Figure S2

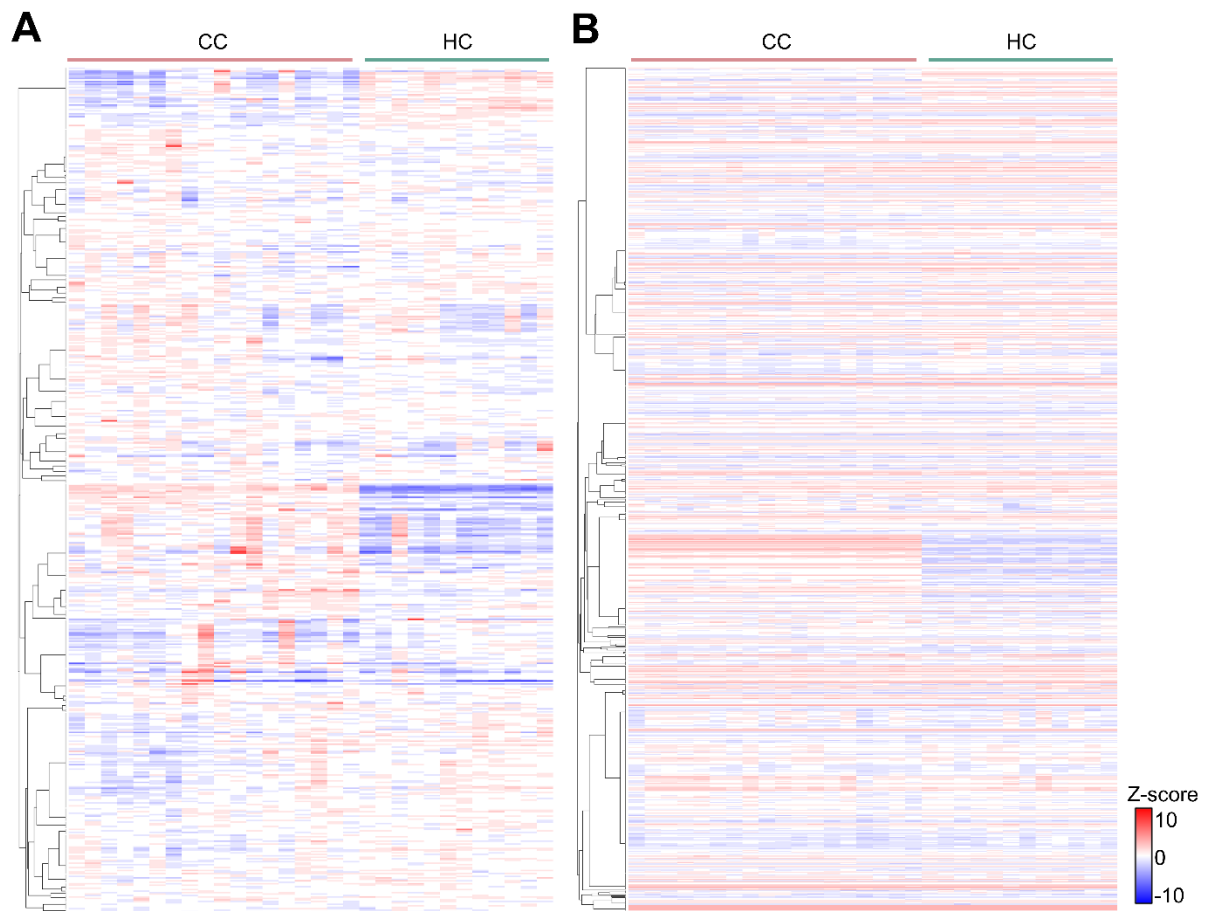


Fig. S2.
The heatmaps for the identified plasma proteins and metabolites. **A-B** The heatmaps of the finally reserved proteins (A) and metabolites (B).

Figure S3

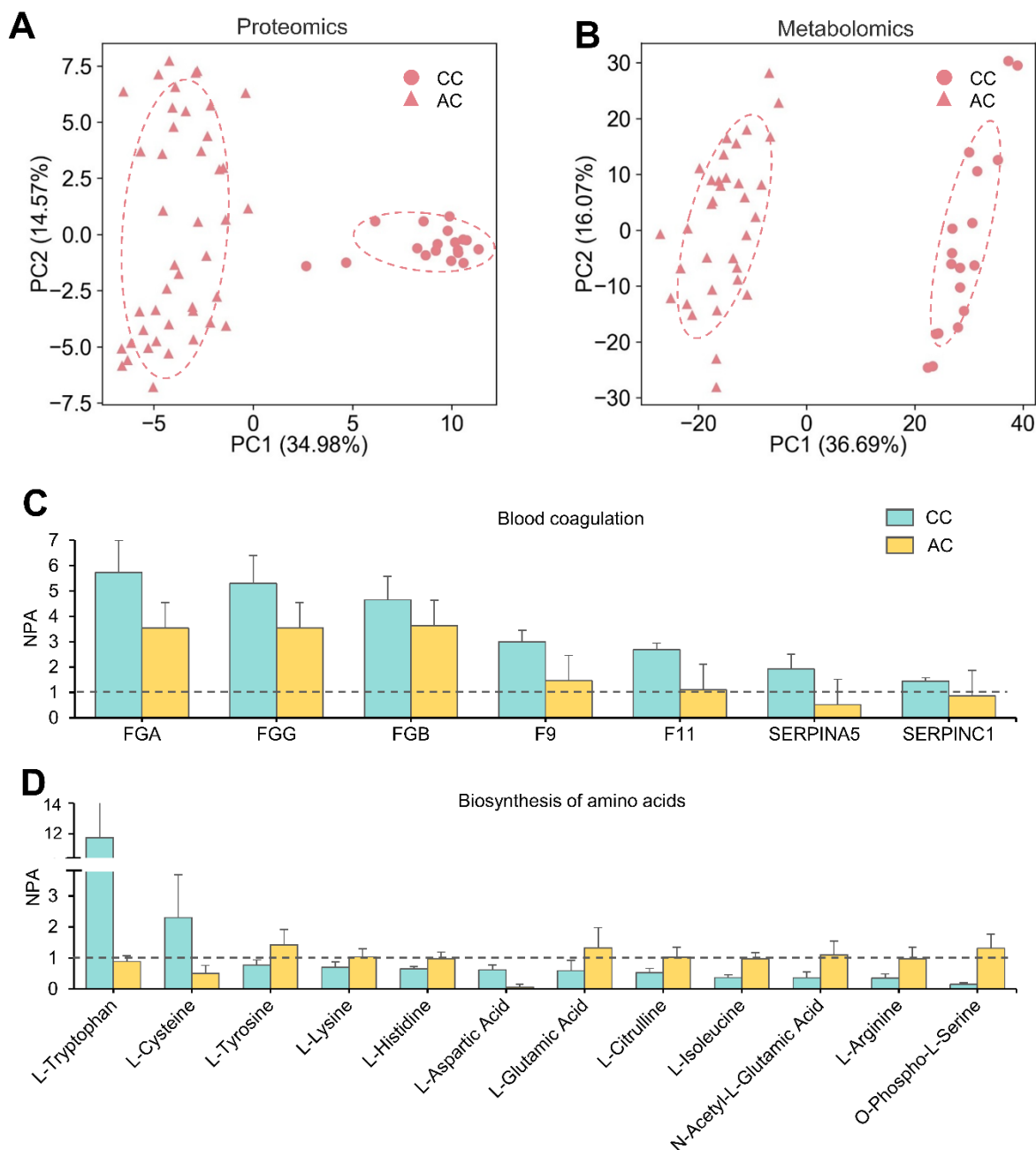


Fig. S3.

The alternations of molecules in CC cases against AC cases. **A-B** PCA analyses of the proteomic data of CC and AC (**A**), and the metabolomics data of CC and AC (**B**). **C** The abundance of proteins enriched in the process of blood coagulation in CC and AC. **D** The abundance of metabolites enriched in the process of biosynthesis of amino acids in CC and AC. Type or paste caption here. Create a page break and paste in the Figure above the caption.

Figure S4

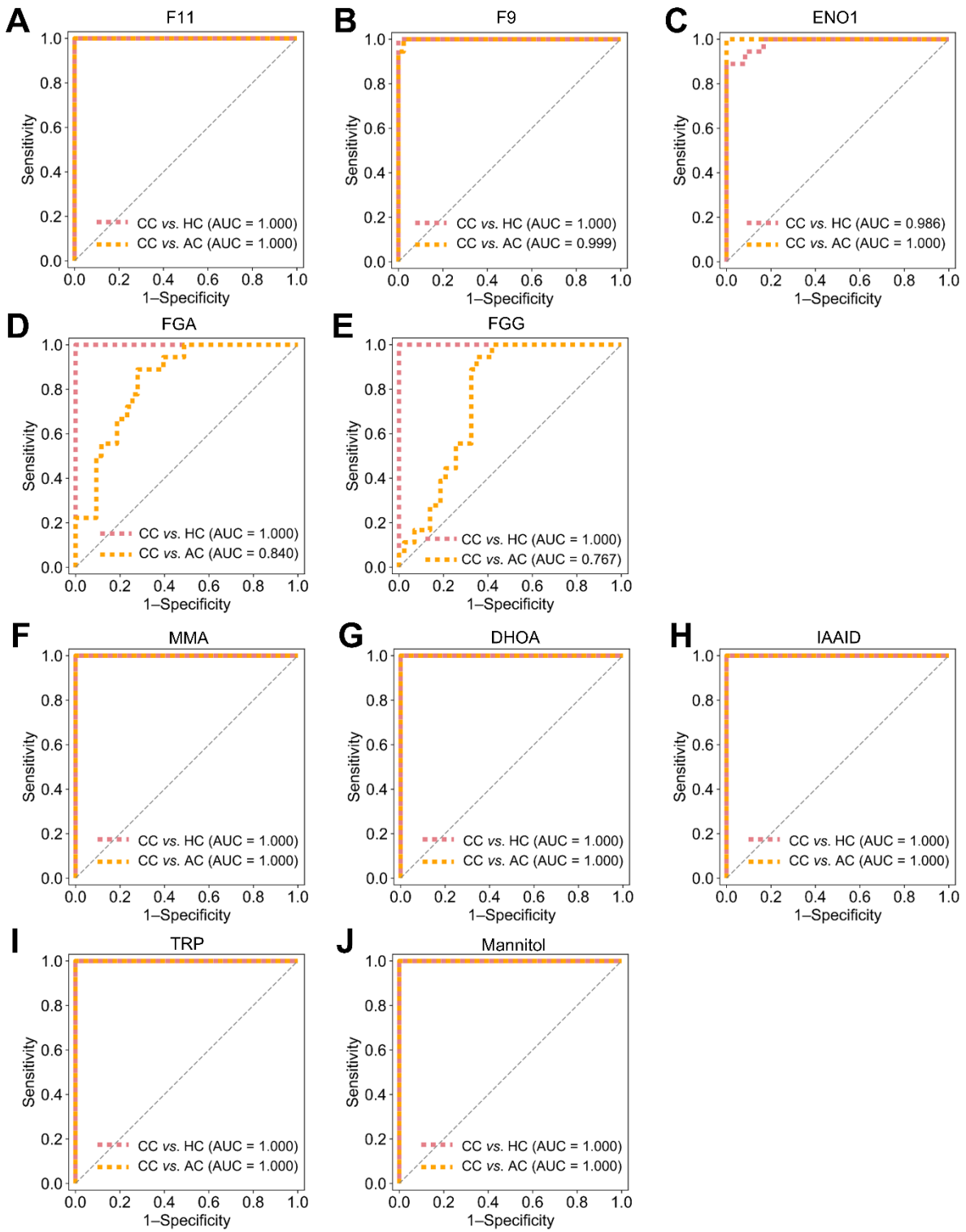


Fig. S4.

Individual biomarkers for classifying CC from AC and HC. The ROC curve and 5-fold cross-validation AUC values of the indicated molecules to classifier the CC cases from HC and AC cases.