

	Individuals with all negative samples (N=13)
Mean Age in years (SD)	57 (15)
# of Men (%) # of Women (%)	8 (61%) 5 (39%)
Ethnicity (%) Hispanic Black White	5 (39%) 6 (46%) 2 (15%)
Comorbidities Hypertension Diabetes Mellitus Coronary Artery Disease Chronic Kidney Disease Lung Disease (eg, COPD) No chronic disease	5 (39%) 2 (15%) 1 (8%) 3 (23%) 2 (15%) 5 (38%)
COVID symptoms (%) Cough Shortness of breath Fever Diarrhea Chest Pain No COVID symptoms	3 (23%) 4 (31%) 4 (31%) 2 (15%) 0 (0%) 8 (62%)
Oxygen Support Required (%) None Nasal Canula Mechanical Ventilation	9 (69%) 0 (0%) 4 (31%) 0 (0%)
Symptom duration prior to baseline collection Mean (range)	12 days (4 – 28 days)
Days between in-hospital NP swab PCR and baseline collection: mean (range)	3 days (1 – 5 days)
Number of follow-up time-points per participant: mean (range)	0
Participants with negative NP swab PCR collected in clinical follow-up during hospitalization	6 (50%)

Table S1. Characteristics of participants with all negative samples.

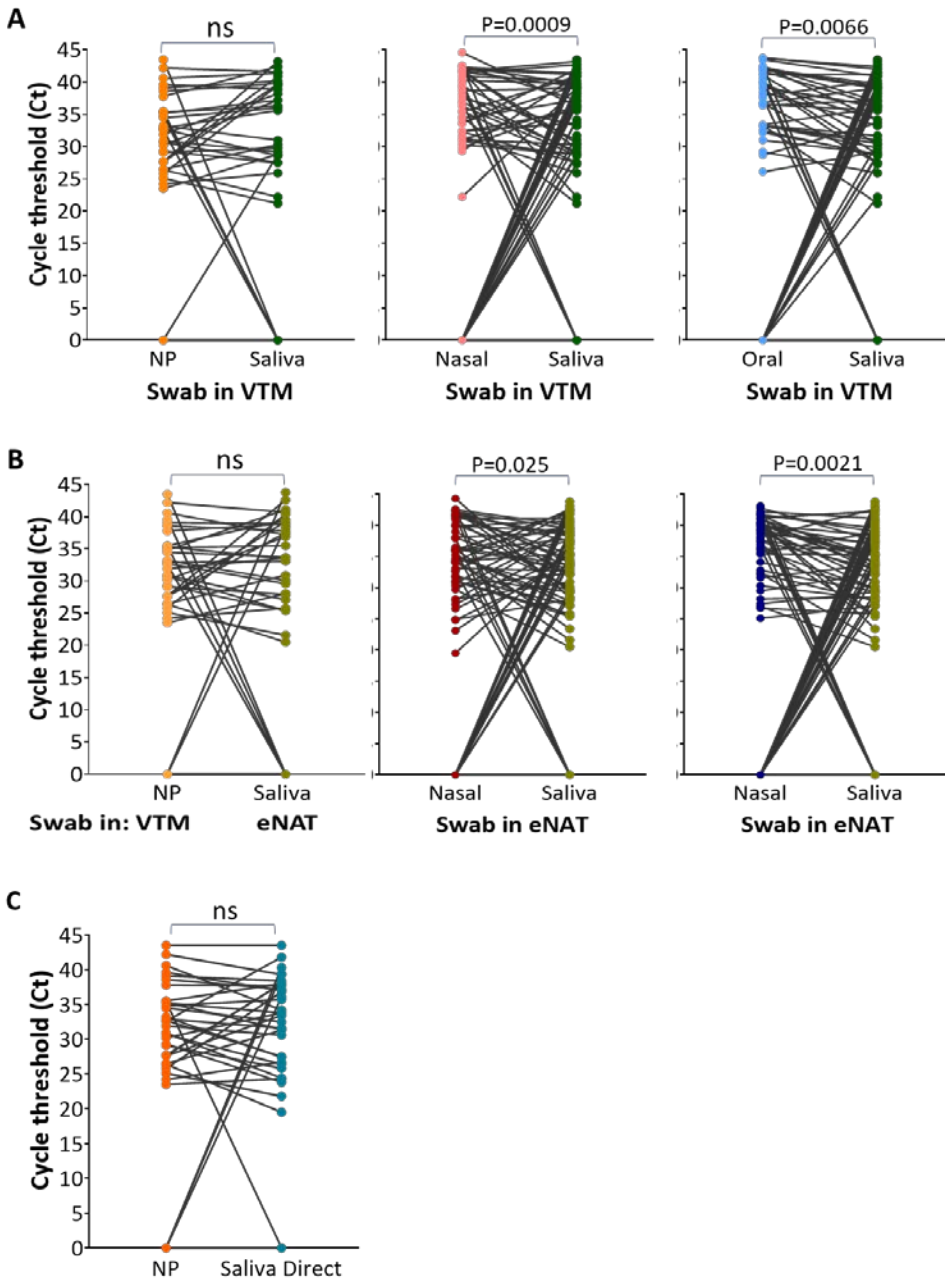


Fig. S2. Paired sample sets showing Ct values comparing each respiratory sample collected in (A) VTM, N=84 and (B) eNAT, N=84. (C) Comparing nasopharyngeal specimens with direct saliva (N=37). The lines indicate samples from the same patient collected at the same time point. ns=not significant.

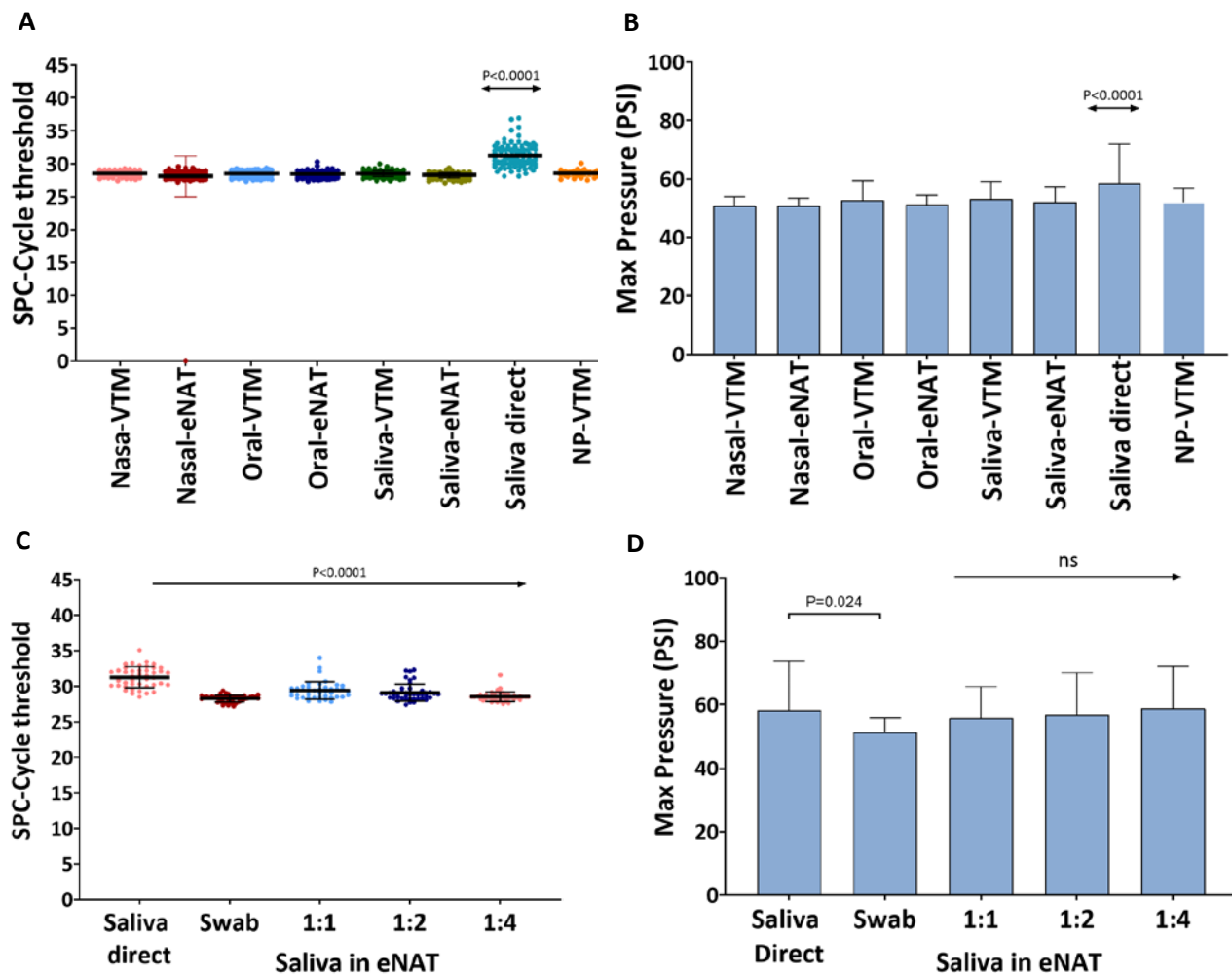


Fig. S3. (A and C) Internal control (SPC) cycle threshold (Ct) values for all respiratory specimens (A, N=84) and for selected saliva samples diluted in eNAT (C, N=44); (B and D) In-cartridge maximum pressure values (PSI) for different respiratory specimens (B, N=84) and for selected saliva samples diluted in eNAT (D, N=44). Each sample tested is represented by points (\blacklozenge) on the scatter plot and the lines show the mean and standard deviation values. ns= not statistically significant.