

Appendix

Supplementary tables and figures

Tables

Table S1. Cross-table of participant counts across eight exclusion criteria.	1
Table S2. Two-sample MR analyses; MR-Egger, IVW, weighted median and weighted mode analyses of BMI, WHR and WHRadjBMI on yearly hospital admission rate: a sensitivity analysis on exclusion of potentially pleiotropic SNPs	2
Table S3. BMI-SNP and hospital admission count-SNP associations	3
Table S4. WHR-SNP and hospital admission count-SNP associations	5
Table S5. WHRadjBMI-SNP and hospital admission count-SNP associations	7
Table S6. BMI-SNP, WHR-SNP and hospital admission count-SNP associations as used for the multivariable two-sample MR analysis.	9

Figures

Figure S1. Plots for two-sample MR analysis of BMI effect on yearly hospital admission rate: A) Cochran's Q against Rücker's Q; B) SNP effects on log scale	11
Figure S2. Plots for two-sample MR analysis of WHR effect on yearly hospital admission rate: A) Cochran's Q against Rücker's Q; B) SNP effects on log scale	12
Figure S3. Plots for two-sample MR analysis of WHRadjBMI effect on yearly hospital admission rate: A) Cochran's Q against Rücker's Q; B) SNP effects on log scale	13

Table S1. Cross-table of participant count across eight exclusion criteria. Total participant count per exclusion criteria is given on the diagonal, with the remaining table entries giving the number of participants meeting any two such criteria (e.g. 345 participants failed the standard inclusion criteria and were of non-white British ancestry). A total of 154901 participants match one or more exclusion criteria and are considered ineligible for analysis

<i>Exclusion criterion</i>	Incorrect admission information ^a	Failed standard inclusion criteria ^b	Non-white British ancestry	Highly related ^c	Minimally related ^d	Not genotyped ^e	No BMI/WHR measurements	No PCA information
Incorrect admission information ^a	34	0	1	0	1	27	1	27
Failed standard inclusion criteria ^b		1675	345	0	100	899	8	0
Non-white British ancestry			73278	7	7431	225	415	0
Highly Related ^c				8	0	0	0	0
Minimally related ^d					73893	0	255	0
Not Genotyped ^e						13797	796	12898
No BMI/WHR measurements							2454	794
No PCA information								12899

a) admissions prior to study start date, post death/censoring date or registered death prior to study start; b) individuals that have a mismatch between genetically inferred and reported gender, individuals with sex chromosome types putatively different from XX or XY and individuals that are outliers in heterozygosity and missing rate; c) individuals related to more than 200 other participants; d) on exclusion a maximal set of unrelated individuals is retained; e) not genotyped for the exposures of interest (BMI, WHR, WHRadjBMI)

Table S2. MR-Egger (random effects), IVW (random effects, exact weights), weighted median and weighted mode analyses of BMI (64 SNPs), WHR (34 SNPs) and WHRadjBMI (45 SNPs) on hospital admission rate per year in UK Biobank participants of White British ancestry. SNPs with an LD $R^2 < 0.001$ have been retained. Rates are given per exposure unit and exposure SD ($SD_{BMI}=4.6$, $SD_{WHR}=0.07$) and 95% confidence intervals (95% CI) are provided. Outliers identified in Figures S1, S2 and S3 were excluded as a sensitivity analysis (3, 4 and 4 SNPs for BMI, WHR and WHRadjBMI, respectively).

		MR-Egger			Penalized weighted median	Weighted mode
		IVW (random effects, exact weights)	Intercept	Slope		
BMI (unit)	Rate ^a (95% CI)	1.018 (1.002-1.035)	1.004 (0.997-1.011)	0.992 (0.941-1.046)	1.019 (0.983-1.058)	1.020 (0.978-1.063)
BMI (SD)	Rate ^a (95% CI)	1.089 (1.011-1.174)	1.004 (0.997-1.011)	0.963 (0.750-1.236)	1.098 (0.931-1.294)	1.098 (0.905-1.329)
WHR (0.1 unit)	Rate ^a (95% CI)	1.166 (1.031-1.320)	1.000 (0.986-1.017)	1.115 (0.550-2.258)	1.251 (0.978-1.600)	1.234 (0.855-1.782)
WHR (SD)	Rate ^a (95% CI)	1.149 (1.029-1.283)	1.000 (0.986-1.017)	1.103 (0.584-2.084)	1.224 (0.975-1.536)	1.209 (0.861-1.698)
WHRadjBMI (0.1 unit)	Rate ^a (95% CI)	1.137 (1.024-1.264)	1.002 (0.988-1.015)	1.070 (0.624-1.834)	1.139 (0.938-1.384)	1.089 (0.792-1.497)
WHRadjBMI (SD)	Rate ^a (95% CI)	1.123 (1.015-1.243)	1.002 (0.988-1.015)	1.063 (0.654-1.728)	1.125 (0.945-1.338)	1.080 (0.792-1.473)

BMI = body mass index, CI = confidence interval, IVW = inverse variance weighted, LD = linkage disequilibrium, MR = Mendelian randomization, SD = standard deviation, WHR = waist-hip-ratio

a) Adjusted for sex, age and the first 40 genetic principle components. Estimates (with corresponding 95% CIs) represent the fold increase in yearly hospital admission rate per BMI unit (1 kg/m²) and SD (4.6 kg/m²) and per 0.1 WHR unit and SD (0.07)

Table S3. BMI-SNP and hospital admission count-SNP associations as used for the univariate two-sample MR analysis of the effect of BMI on yearly hospital admission rate. The BMI-SNP association coefficients were used as external weights for the genetic risk score in the one-sample MR analysis.

SNP	EA ^b	OA	EAF	BMI-SNP associations (European ancestry GIANT consortium meta-analysis, Locke <i>et al.</i> (2016))				Hospital admission count – SNP associations (UK Biobank)			
				β^c	SE	<i>N</i>	<i>P</i>	β^d	SE	<i>N</i>	<i>P</i>
rs1000940	G	A	0.320	0.019	0.003	321836	1.28E-08	-0.012	0.011	310537	9.25E-09
rs10132280	C	A	0.682	0.023	0.003	321797	1.14E-11	0.003	0.011	310537	1.76E-01
rs1016287	T	C	0.287	0.023	0.003	321969	2.25E-11	0.015	0.011	310537	9.98E-14
rs10182181	G	A	0.462	0.031	0.003	321759	8.78E-24	-0.009	0.010	310537	1.11E-06
rs10733682	A	G	0.478	0.017	0.003	320727	1.83E-08	-0.003	0.010	310537	1.24E-01
rs10938397	G	A	0.434	0.040	0.003	320955	3.21E-38	-0.004	0.010	310537	5.44E-02
rs10968576	G	A	0.320	0.025	0.003	322061	6.61E-14	-0.001	0.011	310537	6.46E-01
rs11030104	A	G	0.792	0.041	0.004	322103	5.56E-28	0.014	0.013	310537	1.43E-09
rs11057405	G	A	0.901	0.031	0.006	314111	2.02E-08	0.009	0.017	310537	3.95E-03
rs11126666 ^a	A	G	0.283	0.021	0.003	321979	1.33E-09	-0.007	0.012	310537	1.11E-03
rs11165643	T	C	0.583	0.022	0.003	320730	2.07E-12	0.012	0.011	310537	5.15E-10
rs11191560 ^a	C	T	0.089	0.031	0.005	321893	8.45E-09	0.020	0.019	310537	1.45E-08
rs11583200 ^a	C	T	0.396	0.018	0.003	322095	1.48E-08	-0.012	0.011	310537	1.10E-10
rs1167827	G	A	0.553	0.020	0.003	306238	6.33E-10	-0.004	0.010	310537	4.97E-02
rs11688816 ^a	G	A	0.525	0.017	0.003	322051	1.89E-08	0.000	0.010	310537	9.02E-01
rs11727676	T	C	0.910	0.036	0.006	296401	2.55E-08	-0.011	0.017	310537	8.04E-04
rs11847697 ^a	T	C	0.042	0.049	0.008	306243	3.99E-09	-0.014	0.025	310537	1.68E-03
rs12286929	G	A	0.523	0.022	0.003	321903	1.31E-12	0.016	0.010	310537	1.37E-18
rs12401738	A	G	0.352	0.021	0.003	322070	1.15E-10	0.004	0.011	310537	3.01E-02
rs12429545	A	G	0.133	0.033	0.005	312934	1.09E-12	-0.003	0.016	310537	2.15E-01
rs12446632	G	A	0.865	0.040	0.005	316758	1.48E-18	-0.005	0.015	310537	3.93E-02
rs12566985 ^a	G	A	0.446	0.024	0.003	319282	3.28E-15	0.006	0.010	310537	6.04E-04
rs12885454 ^a	C	A	0.642	0.021	0.003	320823	1.94E-10	-0.004	0.011	310537	2.07E-02
rs12940622	G	A	0.575	0.018	0.003	322032	2.49E-09	-0.022	0.010	310537	8.00E-33
rs13021737	G	A	0.828	0.060	0.004	318287	1.11E-50	0.005	0.014	310537	4.17E-02
rs13078960	G	T	0.196	0.030	0.004	322135	1.74E-14	-0.011	0.013	310537	2.48E-06
rs13107325	T	C	0.072	0.048	0.007	321461	1.83E-12	-0.011	0.020	310537	2.57E-03
rs13191362	A	G	0.879	0.028	0.005	321902	7.34E-09	-0.002	0.016	310537	4.12E-01
rs1516725	C	T	0.872	0.045	0.005	320644	1.89E-22	0.005	0.015	310537	5.97E-02
rs1528435	T	C	0.631	0.018	0.003	321924	1.20E-08	-0.009	0.011	310537	9.40E-07
rs1558902	A	T	0.415	0.082	0.003	320073	7.51E-153	0.008	0.011	310537	2.53E-05
rs16851483	T	G	0.066	0.048	0.008	233929	3.55E-10	-0.008	0.021	310537	2.41E-02
rs16951275	T	C	0.784	0.031	0.004	322098	1.91E-17	0.007	0.012	310537	6.99E-04
rs17001654	G	C	0.153	0.031	0.005	233722	7.76E-09	0.015	0.015	310537	1.65E-08
rs17024393	C	T	0.040	0.066	0.009	297874	7.03E-14	0.016	0.032	310537	4.78E-03
rs17094222	C	T	0.211	0.025	0.004	321770	5.94E-11	0.001	0.013	310537	7.17E-01
rs17405819	T	C	0.700	0.022	0.003	322085	2.07E-11	0.002	0.011	310537	4.39E-01
rs17724992	A	G	0.746	0.019	0.004	319588	3.42E-08	0.020	0.012	310537	3.19E-22
rs1808579	C	T	0.534	0.017	0.003	322032	4.17E-08	0.001	0.010	310537	4.37E-01
rs1928295	T	C	0.548	0.019	0.003	321979	7.91E-10	0.001	0.010	310537	5.46E-01
rs2033529	G	A	0.293	0.019	0.003	321917	1.39E-08	-0.002	0.011	310537	3.73E-01
rs2033732	C	T	0.747	0.019	0.004	321406	4.89E-08	-0.000	0.012	310537	9.30E-01
rs205262	G	A	0.273	0.022	0.004	315542	1.75E-10	0.025	0.012	310537	7.63E-32
rs2075650	A	G	0.848	0.026	0.005	308408	1.25E-08	-0.009	0.015	310537	4.83E-04
rs2112347	T	G	0.629	0.026	0.003	322019	6.19E-17	0.013	0.011	310537	2.56E-11
rs2121279	T	C	0.152	0.025	0.004	322065	2.31E-08	0.015	0.015	310537	1.86E-08

rs2176598	T	C	0.251	0.020	0.004	316848	2.97E-08	0.004	0.012	310537	8.57E-02
rs2207139	G	A	0.177	0.045	0.004	322019	4.13E-29	0.009	0.014	310537	1.68E-04
rs2245368	C	T	0.180	0.032	0.006	205675	3.19E-08	0.008	0.014	310537	1.00E-03
rs2287019 ^a	C	T	0.804	0.036	0.004	300921	4.59E-18	0.013	0.014	310537	8.26E-08
rs2365389	C	T	0.582	0.020	0.003	316768	1.63E-10	-0.007	0.011	310537	3.20E-04
rs2650492	A	G	0.303	0.021	0.004	319464	1.92E-09	0.004	0.011	310537	6.54E-02
rs2820292	C	A	0.555	0.020	0.003	321707	1.83E-10	0.003	0.010	310537	6.24E-02
rs29941	G	A	0.669	0.018	0.003	321970	2.41E-08	-0.001	0.011	310537	5.97E-01
rs3101336	C	T	0.613	0.033	0.003	316872	2.66E-26	0.005	0.011	310537	4.49E-03
rs3736485	A	G	0.454	0.018	0.003	321398	7.41E-09	0.017	0.010	310537	1.62E-19
rs3810291 ^a	A	G	0.666	0.028	0.004	296261	4.81E-15	0.011	0.011	310537	1.46E-08
rs3817334	T	C	0.407	0.026	0.003	321959	5.15E-17	-0.004	0.010	310537	5.00E-02
rs3849570	A	C	0.359	0.019	0.003	284339	2.60E-08	0.010	0.011	310537	2.95E-07
rs3888190 ^a	A	C	0.403	0.031	0.003	321930	3.14E-23	0.013	0.011	310537	1.71E-11
rs4256980	G	C	0.646	0.021	0.003	320028	2.90E-11	0.003	0.011	310537	8.63E-02
rs4740619	T	C	0.542	0.018	0.003	321887	4.56E-09	0.023	0.010	310537	3.67E-36
rs543874	G	A	0.193	0.048	0.004	322008	2.62E-35	-0.005	0.013	310537	3.75E-02
rs6477694	C	T	0.365	0.017	0.003	322048	2.67E-08	0.013	0.011	310537	5.67E-12
rs6567160 ^a	C	T	0.236	0.056	0.004	321958	3.93E-53	0.012	0.012	310537	9.65E-09
rs657452	A	G	0.394	0.023	0.003	313651	5.48E-13	0.014	0.011	310537	9.58E-14
rs6804842	G	A	0.575	0.019	0.003	321463	2.48E-09	-0.015	0.010	310537	2.87E-16
rs7138803	A	G	0.384	0.032	0.003	322092	8.15E-24	-0.016	0.011	310537	4.60E-16
rs7141420	T	C	0.527	0.024	0.003	321970	1.23E-14	0.004	0.010	310537	2.70E-02
rs7243357	T	G	0.812	0.022	0.004	322107	3.86E-08	0.028	0.014	310537	6.55E-31
rs758747	T	C	0.265	0.023	0.004	308688	7.47E-10	-0.009	0.012	310537	5.07E-06
rs7599312	G	A	0.724	0.022	0.003	322024	1.17E-10	0.006	0.012	310537	3.37E-03
rs7899106	G	A	0.052	0.040	0.007	321770	2.96E-08	-0.009	0.024	310537	3.19E-02
rs7903146	C	T	0.713	0.023	0.003	322130	1.11E-11	-0.000	0.011	310537	9.53E-01
rs9400239	C	T	0.688	0.019	0.003	321988	1.61E-08	0.017	0.011	310537	7.57E-18
rs9925964 ^a	A	G	0.620	0.019	0.003	318385	8.11E-10	0.011	0.011	310537	9.47E-09

BMI = body mass index, EA = effect allele, EAF = effect allele frequency, LD = linkage disequilibrium, MR = Mendelian randomization, OA = other allele, SE = standard error

a) These 12 SNPs exceeded the LD threshold ($R^2 < 0.001$) and were excluded from the two-sample summary MR analysis

b) The effect allele (EA) is the BMI increasing allele

c) Coefficients are given per BMI SD (4.6 kg/m²)

d) Coefficients are given on the logarithmic scale, obtained from a quasi-Poisson regression of hospital admission count on the relevant SNP, using person-years on study as an offset and adjusting for age, sex and the first 40 genetic principle components

Table S4. WHR-SNP and hospital admission count-SNP associations as used for the univariate two-sample MR analysis of the effect of WHR on yearly hospital admission rate. The WHR-SNP association coefficients were used as external weights for the genetic risk score in the one-sample MR analysis.

SNP	EA ^b	OA	WHR-SNP associations (European ancestry GIANT consortium meta-analysis, Shungin <i>et al.</i> (2015))					Hospital admission count – SNP associations (UK Biobank)				
			EAF	β^c	SE	N	P	β^d	SE	N	P	
rs1011731 ^a	G	A	0.427	0.019	0.003	212094	1.07E-08	-0.010	0.010	310537	7.08E-08	
rs10195252	T	C	0.590	0.020	0.003	211907	2.57E-09	0.005	0.011	310537	9.27E-03	
rs10245353	A	C	0.200	0.027	0.004	212151	1.57E-10	0.006	0.013	310537	9.64E-03	
rs1045241	C	T	0.714	0.015	0.004	212012	5.76E-05	-0.008	0.012	310537	8.74E-05	
rs10804591	A	C	0.793	0.021	0.004	212108	2.09E-07	-0.005	0.013	310537	1.63E-02	
rs11048470	T	G	0.277	0.025	0.004	212159	6.33E-12	-0.001	0.012	310537	6.45E-01	
rs1121980	A	G	0.433	0.043	0.003	211970	1.33E-38	0.011	0.010	310537	5.44E-09	
rs11663816	C	T	0.265	0.025	0.004	212104	2.65E-11	0.006	0.012	310537	4.99E-03	
rs11989744	C	T	0.760	0.021	0.005	144546	1.30E-05	0.007	0.012	310537	5.43E-04	
rs12549058	G	T	0.084	0.040	0.006	212028	3.17E-10	-0.004	0.022	310537	3.19E-01	
rs1294421	G	T	0.620	0.026	0.003	212054	6.93E-14	-0.007	0.011	310537	4.15E-04	
rs1358980	T	C	0.470	0.027	0.004	211037	1.98E-14	0.014	0.010	310537	1.48E-13	
rs1394461	C	G	0.251	0.017	0.005	144349	4.68E-04	0.005	0.013	310537	1.33E-02	
rs1440372	C	T	0.710	0.021	0.004	210387	7.59E-09	0.014	0.012	310537	4.20E-11	
rs1443512	A	C	0.235	0.026	0.004	212153	2.76E-11	0.001	0.013	310537	7.11E-01	
rs1515108	C	T	0.377	0.007	0.003	212094	3.13E-02	-0.020	0.011	310537	8.41E-26	
rs1569135	A	G	0.529	0.024	0.003	212086	1.00E-12	0.012	0.010	310537	2.61E-10	
rs16996700	T	C	0.730	0.021	0.004	212159	1.60E-08	0.014	0.011	310537	8.92E-12	
rs17109256	A	G	0.219	0.023	0.004	208422	3.02E-08	0.005	0.013	310537	2.67E-02	
rs17451107	T	C	0.613	0.023	0.004	211586	3.50E-11	-0.005	0.011	310537	1.26E-02	
rs17819328	G	T	0.432	0.016	0.004	211496	2.29E-06	0.029	0.010	310537	2.35E-55	
rs2075650	A	G	0.848	0.029	0.005	206613	6.43E-09	-0.009	0.015	310537	4.83E-04	
rs2179129	A	G	0.590	0.021	0.003	212181	1.24E-09	0.016	0.011	310537	1.54E-18	
rs2287019 ^a	C	T	0.802	0.026	0.005	199713	4.34E-09	0.013	0.014	310537	8.26E-08	
rs2765539	T	C	0.735	0.027	0.004	212176	1.08E-12	0.001	0.012	310537	6.31E-01	
rs319564	C	T	0.450	0.014	0.003	212137	3.42E-05	0.012	0.010	310537	4.00E-10	
rs3786897	G	A	0.417	0.022	0.003	212009	3.95E-11	-0.002	0.010	310537	2.46E-01	
rs4471313	T	G	0.720	0.020	0.004	180767	6.92E-07	0.025	0.012	310537	6.19E-33	
rs459193	A	G	0.264	0.026	0.004	212101	6.02E-12	-0.008	0.013	310537	3.67E-04	
rs4640244 ^a	G	A	0.396	0.021	0.004	198799	3.11E-08	0.013	0.011	310537	1.06E-11	
rs4646404	G	A	0.661	0.020	0.004	201330	3.81E-07	-0.002	0.011	310537	3.19E-01	
rs4715208 ^a	G	A	0.740	0.019	0.004	212191	7.91E-07	-0.004	0.012	310537	7.70E-02	
rs4846565	G	A	0.672	0.023	0.004	212157	4.75E-11	0.009	0.011	310537	5.30E-06	
rs4929927	G	A	0.646	0.020	0.003	212152	7.60E-09	0.004	0.011	310537	4.70E-02	
rs7801581 ^a	T	C	0.244	0.023	0.004	198342	4.95E-08	-0.022	0.012	310537	7.73E-24	
rs863750	T	C	0.593	0.016	0.003	212134	1.56E-06	0.003	0.011	310537	1.33E-01	
rs929641	A	G	0.587	0.020	0.003	212102	4.25E-09	-0.015	0.011	310537	3.58E-16	
rs9491696	G	C	0.482	0.038	0.003	211988	4.88E-30	0.005	0.010	310537	1.37E-02	
rs9860730	A	G	0.703	0.023	0.004	212062	2.84E-10	0.005	0.011	310537	1.14E-02	

EA = effect allele, EAF = effect allele frequency, LD = linkage disequilibrium, MR = Mendelian randomization, OA = other allele, SE = standard error, WHR = waist-hip-ratio

a) These 5 SNPs exceeded the LD threshold ($R^2 < 0.001$) and were excluded from the two-sample summary MR analysis

b) The effect allele (EA) is the WHR increasing allele

c) Coefficients are given per WHR SD (0.07)

d) Coefficients are given on the logarithmic scale, obtained from a quasi-Poisson regression of hospital admission count on the relevant SNP, using person-years on study as an offset and adjusting for age, sex and the first 40 genetic principle components

Table S5. WHRadjBMI-SNP and hospital admission count-SNP associations as used for the univariate two-sample MR analysis of the effect of WHRadjBMI on yearly hospital admission rate. The WHRadjBMI-SNP association coefficients were used as external weights for the genetic risk score in the one-sample MR analysis

SNP	EA ^b	OA	WHRadjBMI-SNP associations (European ancestry GIANT consortium meta-analysis, Shungin <i>et al.</i> (2015))				Hospital admission count – SNP associations (UK Biobank)				
			EAF	β^c	SE	<i>N</i>	<i>P</i>	β^d	SE	<i>N</i>	<i>P</i>
rs10195252	T	C	0.587	0.031	0.004	142102	1.03E-15	0.005	0.011	310537	9.27E-03
rs10245353	A	C	0.196	0.037	0.005	142708	6.88E-14	0.006	0.013	310537	9.64E-03
rs1045241	C	T	0.714	0.022	0.004	142400	3.18E-07	-0.008	0.012	310537	8.74E-05
rs10804591	A	C	0.794	0.025	0.005	142653	1.93E-07	-0.005	0.013	310537	1.63E-02
rs10842707	T	C	0.227	0.036	0.005	142708	4.39E-15	-0.003	0.013	310537	1.53E-01
rs10919388	C	A	0.721	0.025	0.004	142721	5.33E-09	0.025	0.012	310537	8.67E-33
rs10991437	A	C	0.117	0.033	0.006	142661	9.74E-08	-0.003	0.016	310537	2.41E-01
rs11231693	A	G	0.061	0.048	0.009	130856	8.20E-08	0.008	0.023	310537	3.54E-02
rs12454712	T	C	0.615	0.017	0.006	102489	3.26E-03	0.004	0.011	310537	1.84E-02
rs12608504	A	G	0.354	0.020	0.004	142678	1.20E-06	0.010	0.011	310537	6.65E-07
rs12679556	G	T	0.245	0.024	0.005	142669	1.12E-07	0.006	0.012	310537	3.20E-03
rs1294410	C	T	0.633	0.034	0.004	142548	1.42E-17	-0.003	0.011	310537	6.55E-02
rs1358980	T	C	0.461	0.039	0.004	139579	3.01E-20	0.014	0.010	310537	1.48E-13
rs1385167	G	A	0.142	0.032	0.006	139368	9.40E-09	-0.028	0.015	310537	7.87E-25
rs1440372	C	T	0.705	0.023	0.004	141188	7.84E-08	0.014	0.012	310537	4.20E-11
rs1443512	A	C	0.233	0.031	0.005	142694	5.38E-12	0.001	0.013	310537	7.11E-01
rs1569135	A	G	0.528	0.020	0.004	142674	3.58E-07	0.012	0.010	310537	2.61E-10
rs17451107	T	C	0.614	0.027	0.004	140959	1.48E-10	-0.005	0.011	310537	1.26E-02
rs1776897	G	T	0.082	0.041	0.008	110603	5.50E-07	0.011	0.018	310537	1.24E-03
rs17819328	G	T	0.431	0.022	0.004	141503	5.82E-08	0.029	0.010	310537	2.35E-55
rs1936805	T	C	0.509	0.042	0.004	142540	6.13E-28	0.006	0.010	310537	1.69E-03
rs224333	G	A	0.634	0.022	0.004	142206	2.76E-07	0.002	0.011	310537	2.90E-01
rs2276824	C	G	0.433	0.022	0.004	141626	7.12E-08	-0.007	0.010	310537	6.07E-05
rs2294239	A	G	0.586	0.028	0.004	142140	1.86E-12	0.016	0.010	310537	1.26E-17
rs2371767	G	C	0.723	0.034	0.005	130378	9.49E-14	0.000	0.012	310537	8.52E-01
rs2645294	T	C	0.575	0.034	0.004	142526	4.42E-18	0.002	0.010	310537	3.07E-01
rs2820443	T	C	0.714	0.041	0.004	142663	1.50E-21	0.002	0.011	310537	2.86E-01
rs2925979	T	C	0.305	0.018	0.004	140533	1.44E-05	0.010	0.011	310537	2.29E-07
rs303084	A	G	0.798	0.024	0.005	142629	5.30E-07	-0.006	0.013	310537	5.39E-03
rs3805389	A	G	0.279	0.018	0.004	141909	4.16E-05	0.011	0.012	310537	3.00E-08
rs4081724	G	A	0.856	0.031	0.006	140159	1.25E-07	0.018	0.015	310537	1.40E-11
rs4646404	G	A	0.665	0.026	0.005	131007	3.46E-08	-0.002	0.011	310537	3.19E-01
rs4765219	C	A	0.667	0.030	0.004	142549	5.99E-14	0.005	0.011	310537	1.02E-02
rs6090583	A	G	0.474	0.020	0.004	142152	2.47E-07	0.028	0.010	310537	1.56E-50
rs6556301 ^a	T	G	0.356	0.022	0.004	140524	2.60E-07	-0.006	0.011	310537	3.89E-03
rs714515 ^a	G	A	0.428	0.031	0.004	142435	6.72E-16	-0.010	0.010	310537	2.89E-08
rs7705502	A	G	0.320	0.023	0.004	142668	2.38E-08	-0.021	0.011	310537	9.98E-26
rs7759742	A	T	0.505	0.024	0.004	140972	1.50E-09	0.013	0.010	310537	6.67E-13
rs7801581 ^a	T	C	0.242	0.027	0.005	129075	5.02E-08	-0.022	0.012	310537	7.73E-24
rs7830933	A	G	0.766	0.021	0.005	142458	4.73E-06	0.013	0.012	310537	7.00E-10
rs7917772	A	G	0.620	0.017	0.004	142345	3.20E-05	0.003	0.011	310537	9.90E-02
rs8030605	A	G	0.150	0.029	0.006	141175	1.66E-06	0.003	0.016	310537	2.47E-01
rs8042543	C	T	0.795	0.024	0.005	141009	3.45E-06	-0.003	0.013	310537	1.36E-01
rs8066985	A	G	0.507	0.019	0.004	142684	1.28E-06	0.001	0.010	310537	8.06E-01
rs905938	T	C	0.738	0.030	0.005	140583	1.73E-10	-0.013	0.012	310537	8.45E-10
rs9687846	A	G	0.186	0.027	0.005	142400	8.28E-08	-0.002	0.013	310537	4.01E-01

rs979012	T	C	0.347	0.026	0.004	142646	4.22E-10	0.013	0.011	310537	5.13E-12
rs9991328	T	C	0.480	0.019	0.004	142624	5.87E-07	-0.014	0.010	310537	4.62E-14

BMI = body mass index, EA = effect allele, EAF = effect allele frequency, LD = linkage disequilibrium, MR = Mendelian randomization, OA = other allele, SE = standard error, WHRadjBMI = waist-hip-ratio adjusted for BMI

- a) These 3 SNPs exceeded the LD threshold ($R^2 < 0.001$) and were excluded from the two-sample summary MR analysis
- b) The effect allele (EA) is the WHR increasing allele
- c) Coefficients are given per WHR SD (0.07)
- d) Coefficients are given on the logarithmic scale, obtained from a quasi-Poisson regression of hospital admission count on the relevant SNP, using person-years on study as an offset and adjusting for age, sex and the first 40 PCAs

Table S6. BMI-SNP, WHR-SNP and hospital admission count-SNP associations as used for the multivariable two-sample MR analysis of the effect of BMI and WHR on yearly hospital admission rate. Given are the 70 SNPs remaining after LD correction ($R^2 < 0.001$) to the joint set of BMI and WHR SNPs.

SNP	EA	O A	EAF	BMI-SNP associations (European ancestry GIANT consortium meta-analysis, Locke <i>et al.</i> (2016))				WHR-SNP associations (European ancestry GIANT consortium meta-analysis, Shungin <i>et al.</i> (2015))				Hospital admission count – SNP associations (UK Biobank, $N=310537$)		
				β^a	SE	P	N	β^a	SE	P	N	β^b	SE	P
rs1000940	G	A	0.225	0.019	0.003	1.28E-08	321836	0.008	0.004	2.30E-02	211915	-0.012	0.011	9.25E-09
rs1011731	G	A	0.458	-0.006	0.003	3.88E-02	321942	0.019	0.003	1.10E-08	212094	-0.010	0.010	7.08E-08
rs10132280	A	C	0.333	-0.023	0.003	1.14E-11	321797	-0.012	0.004	8.40E-04	212105	0.003	0.011	1.76E-01
rs1016287	T	C	0.325	0.023	0.003	2.25E-11	321969	0.013	0.004	6.20E-04	212119	0.015	0.011	9.98E-14
rs10182181	A	G	0.500	-0.031	0.003	8.78E-24	321759	-0.005	0.003	1.60E-01	211882	-0.009	0.010	1.11E-06
rs10245353	A	C	0.183	-0.002	0.004	5.88E-01	322088	0.027	0.004	1.60E-10	212151	0.006	0.013	9.64E-03
rs10733682	A	G	0.425	0.017	0.003	1.83E-08	320727	0.010	0.003	2.90E-03	211864	-0.003	0.010	1.24E-01
rs10938397	A	G	0.567	-0.040	0.003	3.20E-38	320955	-0.018	0.003	2.40E-07	211843	-0.004	0.010	5.44E-02
rs10968576	G	A	0.292	0.025	0.003	6.61E-14	322061	0.017	0.004	2.40E-06	212162	-0.001	0.011	6.46E-01
rs11030104	A	G	0.800	0.041	0.004	5.56E-28	322103	0.020	0.004	8.50E-07	212160	0.014	0.013	1.43E-09
rs11048470	T	G	0.233	-0.009	0.003	6.35E-03	322043	0.025	0.004	6.30E-12	212159	-0.001	0.012	6.45E-01
rs11165643	C	T	0.425	-0.022	0.003	2.07E-12	320730	-0.009	0.003	6.60E-03	212148	0.012	0.011	5.15E-10
rs1167827	A	G	0.458	-0.020	0.003	6.33E-10	306238	-0.006	0.004	8.00E-02	204123	-0.004	0.010	4.97E-02
rs11727676	C	T	0.075	0.036	0.006	2.55E-08	296401	0.005	0.007	4.30E-01	191737	-0.011	0.017	8.04E-04
rs12286929	G	A	0.433	0.022	0.003	1.31E-12	321903	0.010	0.003	4.10E-03	212086	0.016	0.010	1.37E-18
rs12429545	G	A	0.900	0.033	0.005	1.09E-12	312934	-0.015	0.005	2.90E-03	203113	-0.003	0.016	2.15E-01
rs12940622	A	G	0.458	-0.018	0.003	2.49E-09	322032	-0.007	0.003	2.60E-02	212119	-0.007	0.011	8.00E-33
rs1294421	G	T	0.600	-0.005	0.003	1.42E-01	321751	0.025	0.003	6.90E-14	212054	0.005	0.014	4.15E-04
rs13021737	A	G	0.125	-0.060	0.004	1.11E-50	318287	-0.023	0.004	1.90E-07	209902	-0.011	0.013	4.17E-02
rs13078960	T	G	0.817	-0.030	0.004	1.74E-14	322135	-0.010	0.004	2.10E-02	212190	-0.011	0.020	2.48E-06
rs13107325	C	T	0.883	-0.048	0.007	1.82E-12	321461	0.000	0.007	1.00E+00	211675	-0.002	0.016	2.57E-03
rs13191362	A	G	0.800	0.028	0.005	7.34E-09	321902	0.018	0.005	6.00E-04	212035	0.005	0.015	4.12E-01
rs1516725	T	C	0.092	-0.045	0.005	1.89E-22	320644	-0.014	0.005	4.40E-03	210725	0.012	0.010	5.97E-02
rs1569135	A	G	0.533	0.011	0.003	5.24E-04	322000	0.024	0.003	1.00E-12	212086	-0.008	0.021	2.61E-10
rs16851483	G	T	0.908	-0.048	0.008	3.55E-10	233929	-0.019	0.008	2.20E-02	144591	0.007	0.012	2.41E-02
rs16951275	C	T	0.225	-0.031	0.004	1.91E-17	322098	-0.016	0.004	5.00E-05	212172	0.014	0.011	6.99E-04
rs16996700	T	C	0.700	0.018	0.003	1.74E-07	322063	0.021	0.004	1.60E-08	212159	0.015	0.015	8.92E-12
rs17001654	C	G	0.842	-0.031	0.005	7.76E-09	233722	-0.010	0.006	9.30E-02	144378	0.016	0.032	1.65E-08
rs17024393	C	T	0.042	0.066	0.009	7.03E-14	297874	0.029	0.009	1.80E-03	189151	0.001	0.013	4.78E-03
rs17094222	C	T	0.208	0.025	0.004	5.94E-11	321770	0.013	0.004	2.00E-03	212078	0.002	0.011	7.17E-01
rs17405819	C	T	0.367	-0.022	0.003	2.07E-11	322085	-0.002	0.004	6.80E-01	212166	-0.005	0.011	4.39E-01
rs17451107	T	C	0.625	0.005	0.003	1.58E-01	320725	0.023	0.004	3.50E-11	211586	0.020	0.012	1.26E-02
rs17724992	A	G	0.692	0.019	0.004	3.42E-08	319588	0.019	0.004	9.30E-07	210660	0.001	0.010	3.19E-22
rs1808579	T	C	0.475	-0.017	0.003	4.17E-08	322032	-0.004	0.003	1.80E-01	212105	0.001	0.010	4.37E-01
rs1928295	C	T	0.425	-0.019	0.003	7.91E-10	321979	-0.012	0.003	3.90E-04	212089	-0.002	0.011	5.46E-01
rs2033529	G	A	0.258	0.019	0.003	1.39E-08	321917	0.016	0.004	6.00E-06	212146	-0.000	0.012	3.73E-01
rs2033732	C	T	0.758	0.019	0.004	4.89E-08	321406	0.009	0.004	1.80E-02	211985	0.025	0.012	9.30E-01
rs205262	A	G	0.733	-0.022	0.004	1.75E-10	315542	0.000	0.004	9.80E-01	205608	0.013	0.011	7.63E-32
rs2112347	G	T	0.375	-0.026	0.003	6.19E-17	322019	-0.013	0.003	2.50E-04	212132	0.015	0.015	2.56E-11
rs2121279	T	C	0.117	0.024	0.004	2.31E-08	322065	0.010	0.005	4.20E-02	212154	0.004	0.012	1.86E-08
rs2176598	T	C	0.200	0.020	0.004	2.97E-08	316848	0.016	0.004	3.50E-05	206987	0.016	0.011	8.57E-02
rs2179129	A	G	0.550	-0.002	0.003	5.87E-01	321616	0.021	0.003	1.20E-09	212181	0.009	0.014	1.54E-18
rs2207139	G	A	0.100	0.045	0.004	4.13E-29	322019	0.025	0.004	1.40E-08	212163	0.008	0.014	1.68E-04
rs2245368	T	C	0.758	-0.032	0.006	3.19E-08	205675	-0.009	0.006	1.30E-01	133817	0.013	0.014	1.00E-03
rs2287019	C	T	0.850	0.036	0.004	4.58E-18	300921	0.026	0.004	4.30E-09	199713	0.013	0.014	8.26E-08

rs2365389	C	T	0.658	0.020	0.003	1.63E-10	316768	0.008	0.003	2.20E-02	208487	-0.007	0.011	3.20E-04
rs2820292	A	C	0.492	-0.020	0.003	1.83E-10	321707	-0.011	0.003	7.80E-04	212043	0.003	0.010	6.24E-02
rs3101336	T	C	0.351	-0.033	0.003	2.66E-26	316872	-0.016	0.003	3.60E-06	206980	0.005	0.011	4.49E-03
rs3736485	A	G	0.425	0.018	0.003	7.41E-09	321398	0.015	0.003	6.60E-06	212010	0.017	0.010	1.62E-19
rs3786897	G	A	0.408	0.007	0.003	3.43E-02	321528	0.022	0.003	4.00E-11	212009	-0.002	0.010	2.46E-01
rs3817334	C	T	0.550	-0.026	0.003	5.14E-17	321959	-0.009	0.003	6.10E-03	212046	-0.004	0.010	5.00E-02
rs3849570	A	C	0.367	0.019	0.003	2.60E-08	284339	0.011	0.004	2.20E-03	182853	0.010	0.011	2.95E-07
rs3888190	A	C	0.358	0.031	0.003	3.14E-23	321930	0.016	0.003	1.40E-06	212068	0.013	0.011	1.71E-11
rs4256980	G	C	0.725	0.021	0.003	2.90E-11	320028	0.019	0.003	5.30E-08	210672	0.003	0.011	8.63E-02
rs459193	A	G	0.217	0.007	0.004	4.29E-02	321858	0.026	0.004	6.00E-12	212101	-0.008	0.013	3.67E-04
rs4640244	G	A	0.375	0.016	0.003	4.57E-06	305292	0.021	0.004	3.10E-08	198799	0.013	0.011	1.06E-11
rs4740619	T	C	0.533	0.018	0.003	4.56E-09	321887	0.011	0.003	1.10E-03	212076	0.023	0.010	3.67E-36
rs543874	G	A	0.267	0.048	0.004	2.62E-35	322008	0.020	0.004	2.00E-06	212160	-0.005	0.013	3.75E-02
rs6477694	C	T	0.358	0.017	0.003	2.67E-08	322048	0.015	0.003	1.50E-05	212114	0.013	0.011	5.67E-12
rs6567160	C	T	0.283	0.056	0.004	3.93E-53	321958	0.025	0.004	5.90E-10	212147	0.012	0.012	9.65E-09
rs657452	A	G	0.417	0.023	0.003	5.48E-13	313651	0.014	0.004	4.20E-05	204624	0.014	0.011	9.58E-14
rs6804842	A	G	0.425	-0.018	0.003	2.48E-09	321463	-0.006	0.003	5.80E-02	212015	-0.015	0.010	2.87E-16
rs7138803	G	A	0.558	-0.032	0.003	8.15E-24	322092	-0.014	0.004	3.50E-05	212167	-0.016	0.011	4.60E-16
rs7141420	T	C	0.617	0.024	0.003	1.23E-14	321970	0.017	0.003	5.10E-07	212098	0.004	0.010	2.70E-02
rs758747	C	T	0.733	-0.022	0.004	7.47E-10	308688	-0.007	0.004	6.30E-02	200285	-0.009	0.012	5.07E-06
rs7599312	G	A	0.708	0.022	0.003	1.17E-10	322024	0.009	0.004	1.70E-02	212134	0.006	0.012	3.37E-03
rs7899106	A	G	0.950	-0.040	0.007	2.96E-08	321770	-0.011	0.008	1.40E-01	212004	-0.009	0.024	3.19E-02
rs7903146	T	C	0.250	-0.023	0.003	1.11E-11	322130	-0.003	0.004	4.30E-01	212185	-0.000	0.011	9.53E-01
rs929641	A	G	0.617	0.017	0.003	1.11E-07	322004	0.020	0.003	4.20E-09	212102	-0.015	0.011	3.58E-16
rs9400239	C	T	0.700	0.019	0.003	1.61E-08	321988	0.015	0.004	2.10E-05	212123	0.017	0.011	7.57E-18

BMI = body mass index, EA = effect allele, EAF = effect allele frequency, LD = linkage disequilibrium, MR = Mendelian randomization, OA = other allele, SE = standard error, WHR = waist-hip-ratio

a) Coefficients are given per SD unit, 4.6 kg/m² and 0.07, for BMI and WHR, respectively, consistent with the Locke (2016) and Shungin (2015) GWAS meta-analyses. For the analyses the coefficients were used on the SD scale for both exposures and rescaled to whole units for BMI and 0.1 units for WHR.

b) Coefficients are given on the logarithmic scale, obtained from a quasi-Poisson regression of hospital admission count on the relevant SNP, using person-years on study as an offset and adjusting for age, sex and the first 40 PCAs

Figure S1. Plots for two-sample MR analysis of BMI effect (per SD, with $SD_{BMI}=4.6$) on yearly hospital admission rate in UK Biobank participants of White British ancestry. Effects are shown on the $\log(\text{rate})$ scale. A) Cochran's Q is plotted against Rucker's Q for each SNP, as calculated in a leave-one-out analysis. Outliers have been visually identified and are labeled. Q-statistics for the model with the full set of 64 SNPs (red) and with outliers removed (61 SNPs, blue) are shown. B) SNP effect on yearly hospital admission count is plotted against the SNP effect on BMI. Fitted lines are displayed for the random effects MR-Egger, penalized weighted median, weighted mode and random effects exact weight IVW models. The outliers identified in plot A are shown in blue. * denotes a significant slope.

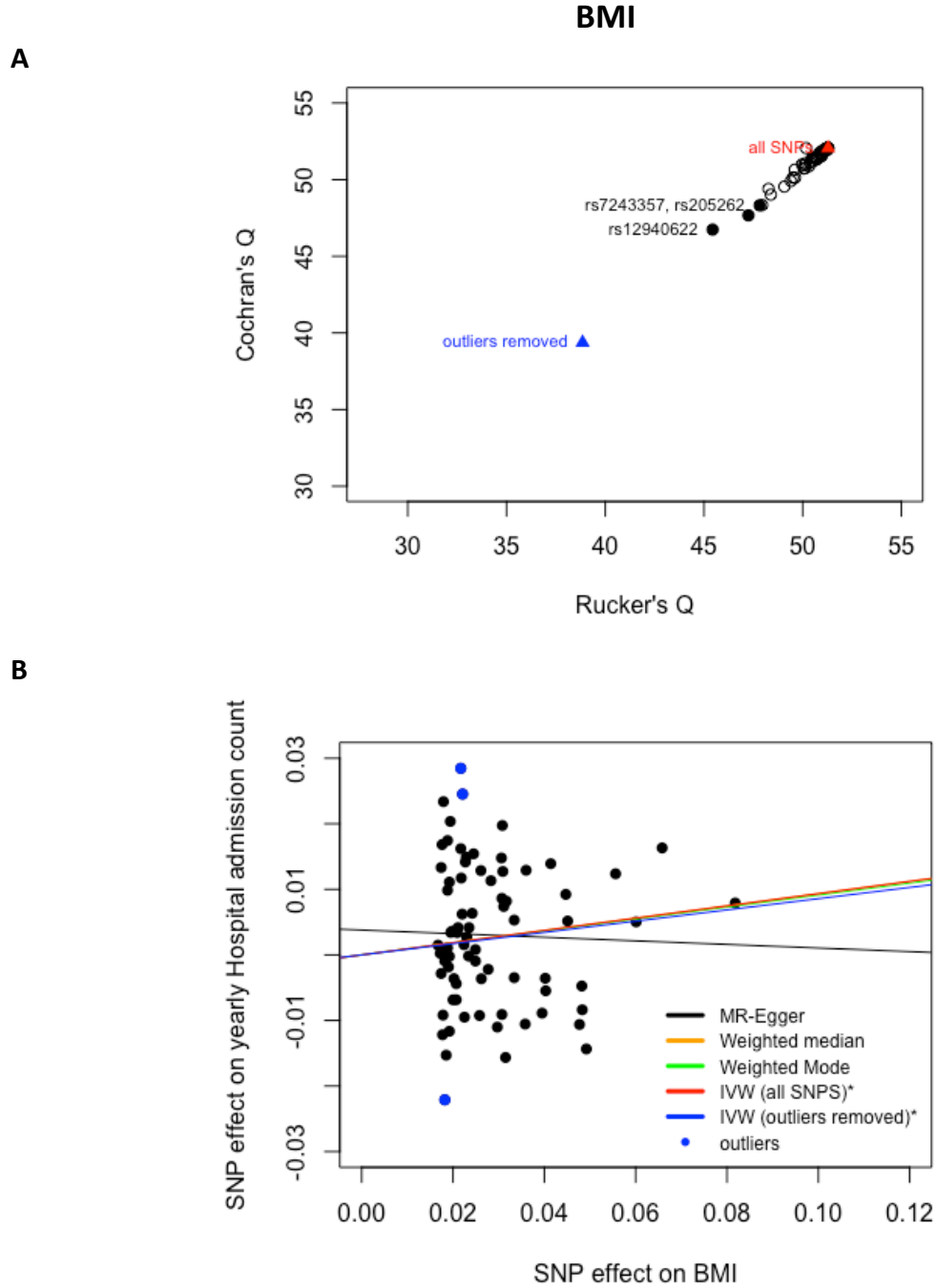


Figure S2. Plots for two-sample MR analysis of WHR effect (per SD, with $SD_{WHR}=0.07$) on yearly hospital admission rate in UK Biobank participants of White British ancestry. Effects are shown on the $\log(\text{rate})$ scale. A) Cochran's Q is plotted against Rucker's Q for each SNP, as calculated in a leave-one-out analysis. Outliers have been visually identified and are labeled. Q-statistics for the model with the full sets of 34 SNPs (red) and with outliers removed (30 SNPs, blue) are shown. B) SNP effect on yearly hospital admission count is plotted against the SNP effect on WHR. Fitted lines are displayed for the random effects MR-Egger, penalized weighted median, weighted mode and random effects exact weight IVW models. The outliers identified in plot A are shown in blue. * denotes a significant slope.

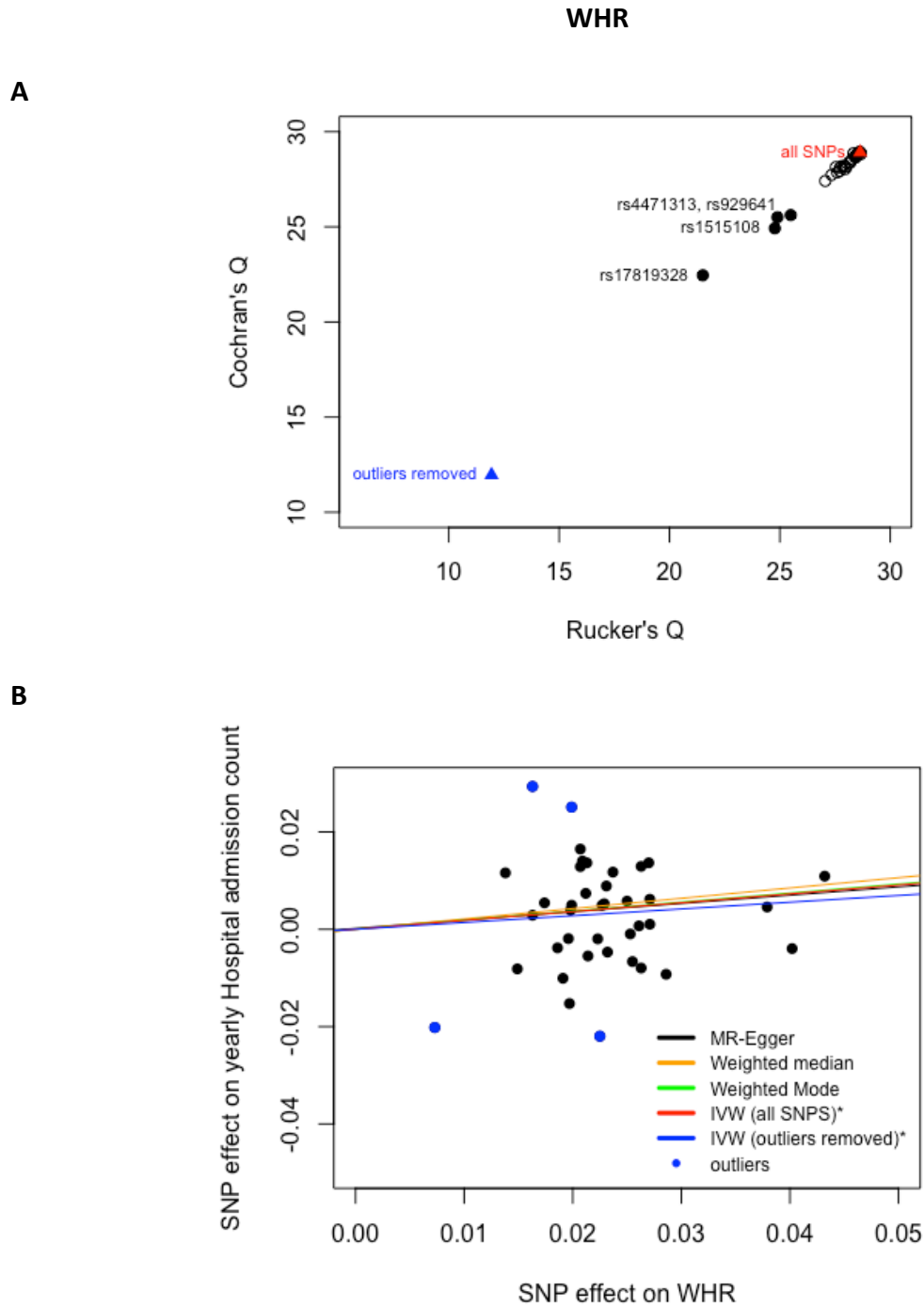


Figure S3. Plots for two-sample MR analysis of WHRadjBMI effect (per SD, with $SD_{WHR}=0.07$) on yearly hospital admission rate in UK Biobank participants of White British ancestry. Effects are shown on the log(rate) scale. A) Cochran's Q is plotted against Rucker's Q for each SNP, as calculated in a leave-one-out analysis. Outliers have been visually identified and are labeled. Q-statistics for the model with the full set of 45 SNPs (red) and with outliers removed (41 SNPs, blue) are shown. B) SNP effect on yearly hospital admission count is plotted against the SNP effect on WHRadjBMI. Fitted lines are displayed for the random effects MR-Egger, penalized weighted median, weighted mode and random effects exact weight IVW models. The outliers identified in plot A are shown in blue. * denotes a significant slope.

