

1 **Synthetic protein antigens for COVID-19 diagnostics**

2
3 **Catherine H. Schein, MSc, PhD^{a,b,*}, Corri B. Levine, MS^c, Susan L F McLellan, MD, MPH^d,**
4 **Surendra S. Negi^{a,c}; PhD, Werner Braun, PhD^{a,e}, Stephen C. Dreskin, MD, PhD^f, Elizabeth S.**
5 **Anaya, BSc.^g Jurgen Schmidt, PhD^g**

6 ^aDepartment of Biochemistry and Molecular Biology, ^bInstitute for Human Infections and immunity
7 (IHII), ^cInstitute for Translational Sciences, ^dDepartment of Internal medicine – Infectious Diseases,
8 ^eSealy Center for Structural Biology and Molecular Biophysics, The University of Texas Medical
9 Branch, Galveston, TX.

10 ^fDivision of Allergy and Clinical Immunology, Department of Medicine, University of Colorado
11 Denver, Aurora, CO. 80045

12 ^g B-11 Bioenergy and Biome Sciences, Bioscience Division Los Alamos National Laboratory, Los
13 Alamos, NM 87545

14 *to whom correspondence should be addressed, chschein@utmb.edu

15 Orcid ID: [0000-0002-8290-2109](https://orcid.org/0000-0002-8290-2109)

16
17

18 **Abstract**

19 There is an urgent need for inexpensive, rapid and specific antigen-based assays to test for infection
20 with SARS-CoV-2 and distinguish variants arising as the COVID-19 pandemic spreads. We have
21 identified a small, synthetic protein (JS7), representing a region of maximum variability within the
22 receptor binding domain (RBD), which binds antibodies in sera from nine patients with PCR-verified
23 COVID-19 of varying severity. Antibodies binding to either JS7 or the SARS-CoV-2 recombinant RBD,
24 as well as those that disrupt binding between a fragment of the ACE2 receptor and the RBD, are
25 proportional to disease severity and clinical outcome. Binding to JS7 was inhibited by linear peptides

26 from the RBD interface with ACE2. Variants of JS7, such as N501Y, can be quickly synthesized in a
27 pure form in large quantities by automated methods. JS7 and related synthetic antigens can provide a
28 basis for specific diagnostics for SARS-CoV-2 infections.

29

30 **Keywords**

31 COVID-19 variants

32 Structure based design

33 Receptor binding domain

34 S protein epitopes

35 ACE2 interaction

36

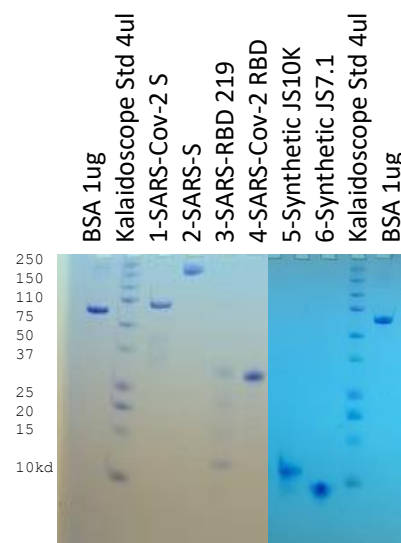
37 **Introduction**

38 COVID-19, caused by a new coronavirus (SARS-CoV-2)^{5,6} is closely related, in its sequence, structure
39 ⁸, binding to the human ACE2 receptor¹⁰ and epitopes recognized by neutralizing antibodies isolated
40 from survivors^{1,11} of the SARS-CoV-1 (SARS) 2002-2003 outbreak^{12,13} and COVID-19¹⁴. In addition,
41 the previously identified SARS-specific human antibody, CR3022, binds the receptor binding domain
42 (RBD) of SARS-Cov-2 with nanomolar affinity¹⁶. Practical tools to distinguish these viruses and
43 especially the recently identified variants of SARS-CoV-2^{15,17} are needed. However, the viruses
44 diverge from each other in that the case fatality rate of the newer virus appears lower. SARS-CoV-2 is
45 much more communicable via inhaled aerosols^{6,18}, perhaps due to insertion of a furin cleavage site
46 around position 701¹⁹. SARS-CoV-2 has continued to mutate during its path through humanity,
47 accumulating changes in this furin site and the RBD that may eventually affect its phenotype, immune
48 sensitivity and resistance to therapies^{4,20-23}. Although both SARS viruses are quite distinct in sequence
49 from the even deadlier β -CoV that causes MERS²⁴, variants or recombinants of these pathogens could
50 result in a virus that combines the high transmissibility of SARS-CoV-2 with the high mortality of
51 SARS-CoV-1 or MERS. In addition, while the origins of both SARS viruses are unclear, there is a high
52 probability that similar viruses are circulating, re-combining and mutating in some animal reservoir.
53 Cross-over of the human virus into other species could also lead to changes in its infectivity severity,
54 and resistance to therapies^{25,26}. It is thus essential to have sensitive and specific diagnostic tools for the
55 public health community to detect currently circulating variants. Outbreaks with mutated forms of
56 SARS-CoV-2 are continuing to emerge^{15,22,27}. Many assays for determining prior COVID-19 infection
57 are based on detecting antibodies in sera to recombinant versions of the surface (S) protein, which was
58 previously identified as the binding site for neutralizing antibodies produced in response to SARS-CoV-
59 1. At least one SARS-CoV-1 neutralizing monoclonal antibody^{28,29} also binds with less affinity to the S

83 spectrum of JS7 (Fig. S2) suggests it forms the flexible
84 structure and β -strands that characterize the experimental
85 structure.

86 We compared JS7 to four recombinant proteins obtained
87 from other groups, including two versions of the RBD of the
88 SARS-CoV-2. One is expressed in 293 cells (derived from
89 human embryonic kidney cells)³⁶ and the other in yeast
90 (proteins 1 and 4, respectively in Fig. 2), one approximately
91 full length S protein³⁶ of SARS-CoV-1 (JSP-657, protein 2),
92 and its corresponding RBD area (RBD 219-N1³). The two
93 versions of the SARS CoV-2 RBD differ in that (1) was
94 purified from a mammalian cell line attached to a linker
95 protein and the other (4) was purified in yeast cells⁷ (Fig. 2).
96 An alignment of the RBD sequences (proteins 1,3,4) is
97 included in supplementary materials.

Fig. 2. S protein and RBD fragments of SARS and SARS-CoV-2 used for dotspots and ELISA assays (je 1.25 μ g). 1 &2: SARS-CoV-2 RBD-SD1 (SSM-1175)¹ and JSP-657 SARS-Cov-1 528²; 3&4: SARS RBD 219-N1³ and SARS CoV-2 RBD⁷; 5 & 6: synthetic proteins from the ACE2 interacting area of SARS-CoV-2 (10,130D and 7158D) on 17% Tris/tricine PAGE developed with Coomassie blue gel stain.



98 Convalescent sera from 9 hospitalized patients with COVID-19 disease of varying severity, from
99 “mild” to critical, were used for dotspots, ELISAs and an assay for inhibition of association of the RBD
100 with its cellular receptor, ACE2. As shown in Table 1S, these patients had co-morbidities that have
101 been found, in other studies, to be associated with hospitalization due to COVID-19. Of the 9, 5 were
102 known to be diabetic, and 6 had elevated glucose levels at time of diagnosis. Four of the 6 patients who
103 had severe or critical disease were obese (BMI>30). Notably, the one patient who succumbed did not
104 have these risk factors except for age >70. As Fig. 3 shows, sera from patients with severe or critical
105 disease had antibodies that interfered with the binding of the SARS-CoV-2 RBD (protein 4) to an ACE2

106 fragment. Sera from the two
 107 patients with mild or moderate
 108 disease did not inhibit in this assay.
 109 However, both patients had
 110 antibodies that recognized the RBD
 111 and/or the JS7 in dotspots or
 112 ELISA; this recognition was

113 inhibited by peptides from the
 114 RBD/ACE2 interface (Fig. 4,5; see
 115 supplementary material for peptide
 116 sequences).

117 A dotspot assay showed that all 9
 118 patient sera contained antibodies that
 119 recognized JS7 (spot #6), while
 120 recognition of the SARS-CoV-2
 121 recombinant RBD (Spots 1 and 4)
 122 varied (Table 1, Table S1). Binding

123 to JS7 was similar, in ELISA assays, to that of the SARS-CoV-2 RBD (Fig. 4). While all patients had
 124 antibodies that recognized both SARS-CoV-2 RBD proteins, one patient (16) with mild disease did not
 125 recognize the full-length S protein of SARS-CoV-1 (spot 2), in two separate blood draws 5 weeks apart
 126 (Table 1).

127 Antibody binding, as measured by ELISA of either protein was approximately proportional to the
 128 severity of the infection (Fig. 4, 5). Antibody binding could be reduced, for some sera to the level of

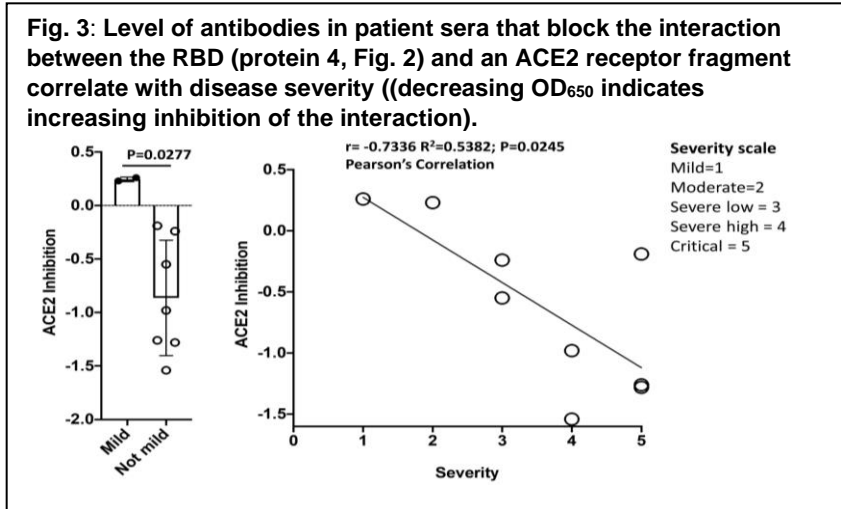


Table 1. Antibody binding to recombinant S protein and JS7 from sera of 3 COVID 19 patients and a control serum. Methods and data for all 9 patients and controls are described in Supplementary material. Recombinant proteins (1-4) or synthetic proteins (5,6) (see Fig. 2) were bound to nitrocellulose for dotspots⁹ and reacted with sera diluted 1:100. ELISA, for binding to recombinant SAR-CoV-2 RBD (Protein 4) or JS7 (6) is the highest dilution factor of serum where significant OD450 is measured; maximum dilution in the assay was 3.3×10^5 . ACE2 inhibition is the degree to which each serum inhibited the binding of an ACE2 fragment to SARS-CoV-2 RBD (protein 4). A negative number indicates inhibition, where protein 4 inhibition (of binding to itself) = -0.82. (average of triplicates is shown).

Patient/age	Severity	Protein dotspot						Binding in ELISA to		ACE2 inhibition
		1	2	3	4	5	6	RBD (4)	JS7 (6)	
Female/30-40	mild							4×10^3	3.7×10^4	0.26
Male/50-60	severe							4×10^3	3.3×10^5	-0.98
Male/30-40	critical							3.3×10^5	3.3×10^5	-1.28
Female/20-30	Control serum							1.2×10^4	3.6×10^4	-0.09

129 controls, by adding peptides from the RBD/ACE2
130 interface (Figure 4, 5 and Supplementary material),
131 further emphasizing the importance of this region for
132 binding to the cell receptor. In the case of JS7, most
133 of the binding could be abolished by adding only one
134 of the peptides, from the central portion of the
135 interface with ACE2. Thus detecting evidence of
136 prior or ongoing COVID-19 infection with the
137 smaller synthetic protein was as sensitive as with the
138 larger RBD, and was specific for antibodies recognizing
139 an area essential for interacting with the ACE2. This
140 suggests it to be an excellent candidate for point of care
141 diagnostics that could be used, in addition to PCR, to
142 determine immune system involvement.

143 Assays with sera from normal volunteers who
144 participated in a study of chronic urticaria, collected in
145 Denver, CO USA in spring, 2019 before widespread introductions of SARS-Cov-2 into the US (Table
146 S2), illustrates one of the great advantages to using the small synthetic proteins for diagnostics. Larger
147 recombinant proteins may need to be expressed with protein tags, for solubility and/or ease in
148 purification. As the strong binding of both control and patient sera to protein 1, which still contains such
149 tags, shows these can cause assay artifacts if left intact (Tables 1, S1, S2). Antibodies in all the control
150 sera showed somewhat less recognition of the RBD fragment of both SARS-CoV-1 and SARS-CoV-2
151 produced in yeast (proteins 3,4; the sequences of all 3 forms of the RBD are compared in Supplementary

Fig. 4: Antibody binding to the RBD of SARS-CoV-2 or JS7 (protein 4 or 6, Fig. 2, respectively) in sera of a mild, a moderate, 2 severe and 2 critical cases of COVID-19 is inhibited by 3 peptides from the RBD/ACE2 interface in competitive ELISA (maximum serum dilution to see binding). See supplementary material for peptide sequences, patient (Table S1) and control sera from spring 2019 (Table S2).

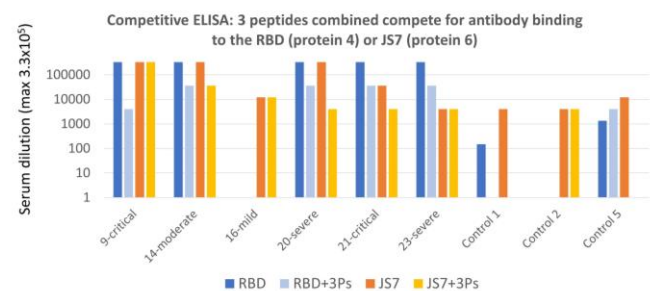
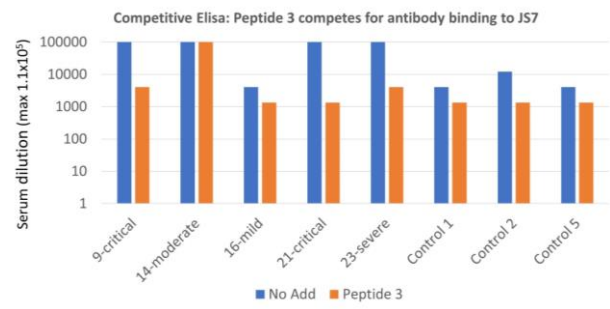


Fig. 5: Binding to JS7 by antibodies in convalescent sera of a mild, a moderate, a severe and two critical cases of COVID-19 is inhibited by Peptide 3: SKVGGNYYLYRLF (442-458)) from the RBD/ACE2 interface interfere in competitive ELISA (maximum serum dilution to see binding is shown).



152 Material). Two of the control sera bound three of the four recombinant proteins to the same extent as
153 patients with only mild COVID-19 disease; this was confirmed by ELISA (Figs. 4,5). This binding
154 could be due to previous infections with other coronaviruses³⁷, or simply reflect germline antibody
155 recognition. In support of the latter, others have found that neutralizing monoclonal antibodies against
156 the SARS-CoV-2 S protein, isolated from many different donors, were from public clonotypes, bound
157 autoantigens and contained relatively few somatic mutations from germline³⁸.

158 The greatest advantage of using JS7 for diagnostic purposes is that its sequence can be rapidly
159 modified to reflect variants now emerging in patients throughout the world. Although the N501Y mutant
160 did not alter neutralization by polyclonal antibodies in some test sera³⁹, other changes in this area at the
161 interface of the RBD and its ACE2 receptor (Fig. 1B) may alter the usefulness of treatments, such as
162 convalescent plasma⁴, monoclonal antibodies and small molecules designed to disrupt this interaction.

163 Several lines of evidence indicate that neutralization by serum antibodies and especially monoclonal
164 antibodies is limited by variation in the JS7 area of the SARS viruses. The affinity of the cross reactive
165 SARS-CoV-1 antibody, CR3022, whose epitope is located in the conserved area just upstream of the
166 JS7 site,²⁸ was greatly reduced by the single amino acid change, P to A found in the SARS-CoV-2
167 protein.²⁹ Further, while all 9 COVID-19 patients in this study had antibodies that recognize the RBD of
168 SARS-CoV-2, one patient with mild illness did not recognize the whole S protein of SARS-CoV-1
169 (protein 2), despite the 80% overall sequence identity (Table 1, S1). Further, some variants in this area,
170 which also arose as escape mutants of monoclonal antibodies⁴⁰, can render the virus insensitive to
171 neutralization by convalescent sera⁴¹. The rise of these variants in several different areas of the world
172 suggests they do not prevent virus replication and may be selected for under immune pressure.

173 In this day of very specific treatments, assays which discriminate among variants of SARS related
174 viruses and other coronaviruses are essential. It is thus important to have a panel of antigens

175 representing areas of maximum variation in the RBD that can be used to rapidly determine specific
176 variants and support planning clinical treatments. Reagents and linkers needed for assays can be
177 integrated into variants of JS7 during synthesis, while controlling its sequence, stereochemistry and
178 disulfide patterns. The JS7 protein, further modified to display variants and to be serum stable, may also
179 have a future as a vaccine additive or booster. For example, recent methods have been developed to
180 generate one component-synthetic proteins with incorporated adjuvant⁴².

181 **In conclusion**, we show here that short synthetic proteins, which can be produced quickly in large
182 quantities, can be the basis of specific assays to detect antibodies in sera that that are produced in
183 response to infection with SARS-CoV-2. Antibodies in sera of 9 patients who had PCR confirmed,
184 COVID-19 of differing severity recognized the JS7 protein. The sera from 8 of these patients was taken
185 up to 2 months after diagnosis, while the 9th patient died during hospitalization. JS7 and future variants
186 should prove to be another tool for eventually defeating the current outbreak.

187

188 **Acknowledgements:** We thank Wendy S. Baker for expert technical assistance, and Wen-Hsian
189 Chen and others in the group at Baylor College of Medicine and Daniel Wrapp (Dartmouth) and the
190 group of Jason McLellan of the University of Texas at Austin for supplying the recombinant proteins (1-
191 4 in Fig 2) used throughout this work. Peptide and protein syntheses at LANL were supported by LDRD
192 ER funding.

193

194

195 **Literature cited**

- 196 1. Wec, A.Z. et al. Broad neutralization of SARS-related viruses by human monoclonal antibodies.
197 *Science* **369**, 731-736 (2020).
- 198 2. Pallesen, J. et al. Immunogenicity and structures of a rationally designed prefusion MERS-CoV
199 spike antigen. *Proceedings of the National Academy of Sciences of the United States of America*
200 **114**, E7348-E7357 (2017).

- 201 3. Chen, W.H. et al. Optimization of the Production Process and Characterization of the Yeast-
202 Expressed SARS-CoV Recombinant Receptor-Binding Domain (RBD219-N1), a SARS Vaccine
203 Candidate. *Journal of pharmaceutical sciences* **106**, 1961-1970 (2017).
- 204 4. Wibmer, C.K. et al. SARS-CoV-2 501Y.V2 escapes neutralization by South African COVID-19
205 donor plasma. *bioRxiv : the preprint server for biology*, 2021.2001.2018.427166 (2021).
- 206 5. Paraskevis, D. et al. Full-genome evolutionary analysis of the novel corona virus (2019-nCoV)
207 rejects the hypothesis of emergence as a result of a recent recombination event. *Infection,
208 genetics and evolution : journal of molecular epidemiology and evolutionary genetics in
209 infectious diseases* **79**, 104212 (2020).
- 210 6. Giovanetti, M., Benvenuto, D., Angeletti, S. & Ciccozzi, M. The first two cases of 2019-nCoV in
211 Italy: Where they come from? *Journal of medical virology* (2020).
- 212 7. Chen, W.-H. et al. Cloning, Expression and Biophysical Characterization of a Yeast-expressed
213 Recombinant SARS-CoV-2 Receptor Binding Domain COVID-19 Vaccine Candidate. *bioRxiv :
214 the preprint server for biology*, 2020.2011.2009.373449 (2020).
- 215 8. Walls, A.C. et al. Structure, Function, and Antigenicity of the SARS-CoV-2 Spike Glycoprotein.
216 *Cell* **181**, 281-292 e286 (2020).
- 217 9. Baker, W.S., Negi, S., Braun, W. & Schein, C.H. Producing physicochemical property consensus
218 alphavirus protein antigens for broad spectrum vaccine design. *Antiviral research* **182**, 104905
219 (2020).
- 220 10. Walls, A.C. et al. Unexpected Receptor Functional Mimicry Elucidates Activation of
221 Coronavirus Fusion. *Cell* **176**, 1026-1039 e1015 (2019).
- 222 11. Pinto, D. et al. Cross-neutralization of SARS-CoV-2 by a human monoclonal SARS-CoV
223 antibody. *Nature* **583**, 290-295 (2020).
- 224 12. Rota, P.A. et al. Characterization of a novel coronavirus associated with severe acute respiratory
225 syndrome. *Science* **300**, 1394-1399 (2003).
- 226 13. Pollet, J. et al. SARS-CoV-2 RBD219-N1C1: A Yeast-Expressed SARS-CoV-2 Recombinant
227 Receptor-Binding Domain Candidate Vaccine Stimulates Virus Neutralizing Antibodies and T-
228 cell Immunity in Mice. *bioRxiv : the preprint server for biology*, 2020.2011.2004.367359 (2020).
- 229 14. Barnes, C.O. et al. Structures of Human Antibodies Bound to SARS-CoV-2 Spike Reveal
230 Common Epitopes and Recurrent Features of Antibodies. *Cell* **182**, 828-842 e816 (2020).
- 231 15. Wise, J. Covid-19: New coronavirus variant is identified in UK. *BMJ* **371**, m4857 (2020).
- 232 16. Tian, X. et al. Potent binding of 2019 novel coronavirus spike protein by a SARS coronavirus-
233 specific human monoclonal antibody. *Emerging microbes & infections* **9**, 382-385 (2020).
- 234 17. Allam, M. et al. Genome Sequencing of a Severe Acute Respiratory Syndrome Coronavirus 2
235 Isolate Obtained from a South African Patient with Coronavirus Disease 2019. *Microbiol Resour
236 Announc* **9** (2020).
- 237 18. Benvenuto, D. et al. The global spread of 2019-nCoV: a molecular evolutionary analysis.
238 *Pathogens and global health*, 1-4 (2020).
- 239 19. Wu, C. et al. Furin: A Potential Therapeutic Target for COVID-19. *iScience* **23**, 101642 (2020).
- 240 20. Korber, B. et al. Tracking Changes in SARS-CoV-2 Spike: Evidence that D614G Increases
241 Infectivity of the COVID-19 Virus. *Cell* (2020).
- 242 21. Mansbach, R.A. et al. The SARS-CoV-2 Spike Variant D614G Favors an Open Conformational
243 State. *bioRxiv : the preprint server for biology* (2020).
- 244 22. Plante, J.A. et al. Spike mutation D614G alters SARS-CoV-2 fitness. *Nature* (2020).
- 245 23. Liu, S. et al. Genetic Spectrum and Distinct Evolution Patterns of SARS-CoV-2. *Frontiers in
246 microbiology* **11**, 593548 (2020).

- 247 24. Braun, B.A., Schein, C.H. & Braun, W. D-graph clusters flaviviruses and beta-coronaviruses
248 according to their hosts, disease type and human cell receptors. *bioRxiv : the preprint server for*
249 *biology* (2020).
- 250 25. Lam, S.D. et al. SARS-CoV-2 spike protein predicted to form complexes with host receptor
251 protein orthologues from a broad range of mammals. *Scientific reports* **10**, 16471 (2020).
- 252 26. Hammer, A.S. et al. SARS-CoV-2 Transmission between Mink (*Neovison vison*) and Humans,
253 Denmark. *Emerging infectious diseases* **27** (2020).
- 254 27. Perera, R.A. et al. Serological assays for severe acute respiratory syndrome coronavirus 2
255 (SARS-CoV-2), March 2020. *Euro surveillance : bulletin Europeen sur les maladies*
256 *transmissibles = European communicable disease bulletin* **25** (2020).
- 257 28. Yuan, M. et al. A highly conserved cryptic epitope in the receptor binding domains of SARS-
258 CoV-2 and SARS-CoV. *Science* **368**, 630-633 (2020).
- 259 29. Wu, N.C. et al. A natural mutation between SARS-CoV-2 and SARS-CoV determines
260 neutralization by a cross-reactive antibody. *PLoS pathogens* **16**, e1009089 (2020).
- 261 30. Zhu, N. et al. A Novel Coronavirus from Patients with Pneumonia in China, 2019. *The New*
262 *England journal of medicine* **382**, 727-733 (2020).
- 263 31. Bowen, D.M., Lewis, J.A., Lu, W. & Schein, C.H. Simplifying complex sequence information:
264 A PCP-consensus protein binds antibodies against all four Dengue serotypes. *Vaccine* **30**, 6081-
265 6087 (2012).
- 266 32. Schein, C.H. et al. Physicochemical property consensus sequences for functional analysis, design
267 of multivalent antigens and targeted antivirals. *BMC Bioinformatics* **13 Suppl 13**, S9 (2012).
- 268 33. Danecek, P., Lu, W. & Schein, C.H. PCP consensus sequences of flaviviruses: correlating
269 variance with vector competence and disease phenotype. *J Mol Biol* **396**, 550-563 (2010).
- 270 34. Yuan, M., Liu, H., Wu, N.C. & Wilson, I.A. Recognition of the SARS-CoV-2 receptor binding
271 domain by neutralizing antibodies. *Biochemical and biophysical research communications*
272 (2020).
- 273 35. Zhou, T. et al. Cryo-EM Structures of SARS-CoV-2 Spike without and with ACE2 Reveal a pH-
274 Dependent Switch to Mediate Endosomal Positioning of Receptor-Binding Domains. *Cell host &*
275 *microbe* **28**, 867-879 e865 (2020).
- 276 36. Wrapp, D. et al. Cryo-EM structure of the 2019-nCoV spike in the prefusion conformation.
277 *Science* **367**, 1260-1263 (2020).
- 278 37. Ladner, J.T. et al. Epitope-resolved profiling of the SARS-CoV-2 antibody response identifies
279 cross-reactivity with endemic human coronaviruses. *Cell Reports Medicine* **2**, 100189 (2021).
- 280 38. Kreye, J. et al. A Therapeutic Non-self-reactive SARS-CoV-2 Antibody Protects from Lung
281 Pathology in a COVID-19 Hamster Model. *Cell* **183**, 1058-1069 e1019 (2020).
- 282 39. Xie, X. et al. Neutralization of N501Y mutant SARS-CoV-2 by BNT162b2 vaccine-elicited sera.
283 *bioRxiv : the preprint server for biology*, 2021.2001.2007.425740 (2021).
- 284 40. Liu, Z. et al. Landscape analysis of escape variants identifies SARS-CoV-2 spike mutations that
285 attenuate monoclonal and serum antibody neutralization. *bioRxiv : the preprint server for*
286 *biology* (2020).
- 287 41. Andreano, E. et al. SARS-CoV-2 escape in vitro from a highly neutralizing COVID-19
288 convalescent plasma. *bioRxiv : the preprint server for biology* (2020).
- 289 42. Hanna, C.C. et al. Synthetic protein conjugate vaccines provide protection against
290 *Mycobacterium tuberculosis* in mice. *Proceedings of the National Academy of Sciences* **118**,
291 e2013730118 (2021).