

1 Initial evaluation of a mobile SARS-CoV-2 RT-LAMP testing strategy

2 Christina M. Newman^{1*}, Mitchell D. Ramuta^{1*}, Matthew T. McLaughlin¹, Roger W. Wiseman¹, Julie A.
3 Karl¹, Dawn M. Dudley¹, Miranda R. Stauss³, Robert J. Maddox³, Andrea M. Weiler³, Mason I. Bliss²,
4 Katrina N. Fauser³, Luis A. Haddock III², Cecilia G. Shortreed¹, Amelia K. Haj¹, Molly A. Accola⁴, Anna
5 S. Heffron¹, Hailey E. Bussan¹, Matthew R. Reynolds^{2,3}, Olivia E. Harwood¹, Ryan V. Moriarty¹, Laurel
6 M. Stewart¹, Chelsea M. Crooks², Trent M. Prall¹, Emma K. Neumann¹, Elizabeth D. Somsen¹, Corrie
7 B. Burmeister¹, Kristi L. Hall¹, William M. Rehrauer^{1,4}, Thomas C. Friedrich^{2,3}, Shelby L. O'Connor^{1,3},
8 David H. O'Connor^{1,3}

9 Author Affiliations:

10 Pathology and Laboratory Medicine, School of Medicine and Public Health, University of Wisconsin-
11 Madison, Madison, WI, USA¹

12 Pathobiological Sciences, School of Veterinary Medicine, University of Wisconsin-Madison, Madison,
13 WI, USA²

14 Wisconsin National Primate Research Center, Madison, WI, USA³

15 University of Wisconsin Hospitals and Clinics, Madison, WI, USA⁴

16 *These authors contributed equally to this work.

17

18 No. text pages: 26, No. tables and figures: 4 tables, 3 figures, 1 supplemental table

19 Running head: RT-LAMP surveillance for SARS-CoV-2

20 Funding and support: NIH RADx (3 U54 EB027690-0S1), NIH P51 (OD011106 to WNPRC), RFIP
21 (RR15459-01 and RR020141-01 to WNPRC), WARF COVID-19 Challenge grant, NIH T32 (A|007414
22 to A.S.H. and C.M.C.)

23 Conflicts of interest: C.M.N., D.M.D, A.M.W., D.H.O., and T.C.F. provided consulting services to Salus
24 Discovery LLC. D.H.O. is also a consultant for Batelle.

25 Correspondence: David H. O'Connor, 555 Science Dr, Madison, WI 53711 Phone: (608) 890-0845, Fax
26 (608) 265-8084, Email: dhoconno@wisc.edu

27

28 **Abstract (220 of 220 words)**

29 Severe acute respiratory syndrome coronavirus 2 (SARS-CoV-2) control in the United States remains
30 hampered, in part, by testing limitations. We evaluated a simple, outdoor, mobile, colorimetric reverse
31 transcription loop-mediated isothermal amplification (RT-LAMP) assay workflow where self-collected
32 saliva is tested for SARS-CoV-2 RNA. From July 16 to November 19, 2020, 4,704 surveillance samples
33 were collected from volunteers and tested for SARS-CoV-2 at 5 sites. A total of 21 samples tested
34 positive for SARS-CoV-2 by RT-LAMP; 12 were confirmed positive by subsequent quantitative reverse-
35 transcription polymerase chain reaction (qRT-PCR) testing, while 8 were negative for SARS-CoV-2
36 RNA, and 1 could not be confirmed because the donor did not consent to further molecular testing. We
37 estimated the RT-LAMP assay's false-negative rate from July 16 to September 17, 2020 by pooling
38 residual heat-inactivated saliva that was unambiguously negative by RT-LAMP into groups of 6 or less
39 and testing for SARS-CoV-2 RNA by qRT-PCR. We observed a 98.8% concordance between the RT-
40 LAMP and qRT-PCR assays, with only 5 of 421 RT-LAMP negative pools (2,493 samples) testing
41 positive in the more sensitive qRT-PCR assay. Overall, we demonstrate a rapid testing method that can
42 be implemented outside the traditional laboratory setting by individuals with basic molecular biology
43 skills and can effectively identify asymptomatic individuals who would not typically meet the criteria for
44 symptom-based testing modalities.

45

46

47

48

49

50

51

52

53

54

55 Introduction

56 More than 340,000,000 severe acute respiratory syndrome coronavirus 2 (SARS-CoV-2) diagnostic
57 tests have been performed in the United States as of February 22, 2021, yet it is estimated that 80-95%
58 of infected individuals are not tested^{1,2}. The availability of diagnostic testing for population surveillance
59 around the United States has been limited because of testing supply shortages and guidelines set by
60 public health officials^{3, 4}. Multiple studies have shown that asymptomatic and presymptomatic
61 individuals infected with SARS-CoV-2 can be as infectious as symptomatic individuals⁵⁻⁹, with recent
62 estimates of up to 59% of transmission coming from asymptomatic or presymptomatic individuals¹⁰.
63 Virological assessments of SARS-CoV-2-positive individuals and coronavirus disease 2019 (COVID-
64 19) patients further support the reports of asymptomatic transmission, identifying no significant
65 differences in viral loads found in the upper respiratory tracts of asymptomatic and symptomatic
66 individuals^{5, 7, 11-13}. Furthermore, Arons et al. (2020) demonstrated that positive viral cultures can be
67 isolated from presymptomatic patients up to 6 days before the onset of symptoms⁵.

68

69 Delays in reporting test results can prevent timely isolation of infected individuals. Most current testing
70 programs fail to identify and efficiently notify infected individuals. Since transmission can occur before
71 symptoms manifest, reporting delays create a major barrier to safely returning to workplaces and
72 schools¹⁴. Therefore, there remains an urgent need for rapid tests that identify presymptomatic and
73 asymptomatic individuals while conserving diagnostic testing reagents. Non-diagnostic point-of-care
74 (POC) testing, used in conjunction with the current clinical diagnostic testing regimen, may improve our
75 ability to identify infectious individuals and limit their exposure to others while they are most contagious
76 and conserve clinical diagnostic tests for those who require confirmatory testing. Incorporating active
77 surveillance using POC tests as part of mitigation strategies for reopening K-12 schools could play an
78 integral role in reducing SARS-CoV-2 transmission among students, teachers and staff members,
79 families, and the surrounding community^{15, 16}.

80

81 Loop-mediated isothermal amplification (LAMP) is a low-cost method for rapid target-specific detection

82 of nucleic acids¹⁷. LAMP has long been used as an alternative to gold-standard quantitative reverse
83 transcription polymerase chain reaction (qRT-PCR) to surveil populations for a variety of pathogens,
84 especially in resource-limited settings^{18–22}. Reverse transcription LAMP (RT-LAMP) assays have
85 recently been developed for rapid SARS-CoV-2 testing^{23–29}. RT-LAMP is an appealing candidate for
86 POC SARS-CoV-2 testing because it is inexpensive, circumvents supply shortages by relying on
87 different reagents than current diagnostic tests, requires minimal sample processing, and can be
88 deployed outside of traditional laboratory settings. Recently, a number of studies have shown the
89 correlation between the presence of virus in saliva and nasopharyngeal swabs, demonstrating that
90 saliva specimens are a valid and reliable alternative to nasopharyngeal swab specimens for SARS-
91 CoV-2 testing^{30–35}. Saliva specimen self-collection is noninvasive, can be done at home, does not
92 require swabs or personal protective equipment, and limits direct contact between test operators and
93 testing populations. Here we describe our experience implementing a simple, rapid-turnaround, mobile,
94 non-diagnostic SARS-CoV-2 testing workflow combining self-collected saliva and RT-LAMP in
95 volunteers without symptoms of SARS-CoV-2 infection. Individuals were strongly encouraged to isolate
96 and obtain follow-up diagnostic testing after receiving a positive result by RT-LAMP. This addresses a
97 key knowledge gap of how on-site RT-LAMP testing performs in real-world conditions, since virtually all
98 previous studies have only evaluated SARS-CoV-2 RT-LAMP in well-equipped molecular biology
99 laboratories.

100

101 **Materials and Methods**

102 POC testing sites

103 To begin operating voluntary POC testing, we developed a system of color-coded storage bins for
104 equipment and supplies, as well as assembled folding tables, chairs, extension cords, and coolers that
105 could be easily decontaminated and packed to fit in a Dodge Caravan (FCA US LLC., Auburn Hills, MI)
106 or other, similarly sized minivan for transportation between testing sites and our base laboratory facility.
107 On July 16, 2020, we launched our first mobile POC testing sites which ultimately expanded over 18
108 weeks to include two workplaces, two K-12 schools, and an athletics program (Suppl. Table 1). With

109 the exception of the athletics program, sites were initially outdoors, sometimes under an overhang, but
110 otherwise open to the environment. The athletics site was a climate-controlled, indoor practice field. At
111 all sites, equipment and reagents were transported by minivan and surfaces were disinfected during
112 assembly, breakdown, and frequently throughout testing. Participant consenting and volunteer sample
113 collection were performed on-site but separated from the sample preparation and assay areas (most
114 commonly on the other side of the building). In an effort to limit contamination, each assay area was set
115 up with three separate folding tables: (1) sample heat-inactivation and preparation, (2) preparation of
116 RT-LAMP reagents and assay set-up, and (3) RT-LAMP incubation and imaging. Individuals
117 responsible for sample inactivation and performing assays wore appropriate personal protective
118 equipment (PPE) including N95 face masks, face shields or safety glasses, disposable lab coats, and
119 double gloves. In anticipation of wet and cold fall weather, by September 2020, assay workspaces were
120 transitioned to biosafety hoods in a vacant indoor laboratory space for several POC testing locations. In
121 October 2020, we received IRB approval for obtaining consent for repeat SARS-CoV-2 testing. This
122 allowed us to transition away from consenting participants at each testing time point and instead
123 allowed each enrolled participant to consent once regardless of the number of times they supplied a
124 sample. Following reports that SARS-CoV-2 RNA is stable in saliva at room temperature for prolonged
125 periods³⁶, we also transitioned away from in-person sample collection at some of the testing sites and
126 instead distributed self-collection take-home kits for drop off at designated locations for same day
127 processing.

128

129 Sample collection and preparation

130 We obtained approval from the University of Wisconsin-Madison Institutional Review Board (#2020-
131 0855 and #2020-1142). Participants were advised to avoid eating, or drinking anything except for water,
132 for 30 minutes prior to providing a sample. After providing informed consent, volunteers self-collected at
133 least 50 µl of saliva in a 1.5 ml “safe-lock” microcentrifuge tube using a 1000 µl unfiltered pipette tip to
134 funnel the specimen into the tube. Each volunteer disinfected the outside of the tube with a pre-
135 moistened disinfectant wipe. Samples collected in-person were typically processed within 3 hours of

136 collection through our RT-LAMP mobile testing workflow, while samples collected using take-home kits
137 were typically processed within 30 hours (Figure 1). Samples were first incubated in a heat block at
138 65°C for 30 minutes to inactivate SARS-CoV-2³⁷ and then incubated in another preset heat block at
139 98°C for 3 minutes to improve nucleic acid detection and inactivate salivary enzymes³⁸. The inactivated
140 saliva was then centrifuged for 2 minutes in a benchtop microcentrifuge. Fifty microliters of the saliva
141 supernatant were then added to 50 µl of 1x phosphate buffered saline, pH 7.4 (1x PBS).

142

143 RT-LAMP reactions

144 Three microliters of the saliva/PBS mixture for each sample was added in duplicate to 17 µl of a
145 colorimetric RT-LAMP reaction mix containing WarmStart colorimetric LAMP mastermix (NEB,
146 catalogue# M1800), water, and a set of six SARS-CoV-2-specific RT-LAMP primers designed against
147 the N gene³⁸. The SARS-CoV-2 RT-LAMP primer set was previously designed by Broughton et al. and
148 is currently used in an FDA emergency use authorized (EUA) COVID-19 test by Color Genomics (Table
149 1)^{39, 40}. Reactions were incubated for 30 minutes at 65°C. A smartphone or tablet was used to record
150 images of each reaction before (time = 0) and after the incubation period (time = 30). A color change
151 from pink/orange to yellow in at least 1 of 2 replicates was scored relative to gamma-irradiated SARS-
152 CoV-2 (irSARS-CoV-2, BEI Resources, Manassas, VA) that was directly added to RT-LAMP reactions
153 as a positive control in each batch of reactions at concentrations ranging from 220-3,333 copies/µl
154 (2.2×10^5 - 3.33×10^6 copies/ml). irSARS-CoV-2 was diluted and aliquoted as ready-to-run positive
155 control standards and stored at -80°C. On the day of testing, the positive controls were removed from
156 the freezer and stored on ice at POC sites. Individuals whose samples were recorded as potentially
157 positive for SARS-CoV-2 by RT-LAMP were contacted by an infectious disease clinician in accordance
158 with the IRB protocol and urged to obtain a clinical diagnostic test to confirm findings and self-isolate in
159 accordance with public health recommendations.

160

161 Limit of detection (LOD) estimation using contrived saliva samples

162 To estimate the limit of detection of the RT-LAMP assay, contrived positive saliva samples were

163 prepared by adding irSARS-CoV-2 diluted from 1×10^4 - 10 copies/ μ l (1×10^7 - 1×10^4 copies/ml) or from
164 5×10^4 - 50 copies/ μ l (5×10^7 - 5×10^4 copies/ml) directly into unaltered saliva collected from a total of 25
165 SARS-CoV-2-negative individuals. Dilutions were based on two independent, in-house qRT-PCR
166 experiments showing that the ir-SARS-CoV-2 stock concentration ranged from 7.89×10^6 - 8.23×10^6
167 copies/ μ l (7.89×10^9 - 8.23×10^9 copies/ml). In two RT-LAMP experiments, four serial dilutions of irSARS-
168 CoV-2 were prepared for each saliva sample in duplicate. RT-LAMP reactions were set up as described
169 previously. Negative controls consisting of 1x PBS and positive controls consisting of 1×10^4 copies/ μ l
170 (1×10^7 copies/ml) irSARS-CoV-2 in water were also prepared in duplicate. Reactions were called
171 positive if a color change from pre-amplification to post-amplification occurred in at least 1 of 2
172 replicates that was consistent with that of the positive controls.

173

174 Limit of detection (LOD) estimation using clinical samples

175 De-identified discard saliva samples from 38 SARS-CoV-2-positive patients were provided by the
176 University of Wisconsin Hospitals and Clinics (UWHC) for evaluation of RT-LAMP performance with
177 known positive saliva samples. Clinical saliva samples were originally collected and stored at 4°C for up
178 to 4 weeks prior to assessment by RT-LAMP. Additional 10-fold and 100-fold dilutions were prepared
179 for 13 of the samples in saliva collected from a negative volunteer. Clinical samples and dilutions were
180 prepared as described previously except that 20-50 μ l of heat-inactivated sample, dependent on total
181 sample volume, was added to an equal volume of 1x PBS in a clean 1.5 ml screw-top tube and pipetted
182 gently to mix. For each sample, 3 μ l was then added to duplicate colorimetric RT-LAMP reactions.
183 Negative and positive control reactions (described previously) were also prepared in duplicate except
184 that saliva collected from a negative volunteer was used as the negative control for these reactions.
185 RT-LAMP reactions were prepared and images collected as described previously.

186

187 Quantitative RT-PCR

188 POC samples

189 We measured vRNA concentration using sensitive qRT-PCR in a subset of the inactivated saliva
190 samples described above after initial evaluation using RT-LAMP. Saliva samples that were negative for
191 SARS-CoV-2 by RT-LAMP were pooled into groups of 6 or fewer for qRT-PCR to balance cost
192 effectiveness with reasonable estimated detection sensitivity. Ten additional, individual RT-LAMP-
193 negative samples were submitted as negative controls alongside samples identified as positive by RT-
194 LAMP. Saliva samples that were identified as positive for SARS-CoV-2 by RT-LAMP were tested by
195 qRT-PCR individually to estimate our POC LOD. RNA was isolated from up to 150 μ l saliva and
196 combined with an equivalent volume of nuclease-free water using the Viral Total Nucleic Acid kit for the
197 Maxwell RSC instrument (Promega, Madison, WI) following the manufacturer's instructions. Viral load
198 quantification was performed using a sensitive qRT-PCR assay developed by the CDC to detect SARS-
199 CoV-2 (specifically the N1 assay) and commercially available from IDT (Coralville, IA). The assay was
200 run on a LightCycler 96 or LC480 instrument (Roche, Indianapolis, IN) using the Taqman Fast Virus 1-
201 step Master Mix enzyme (Thermo Fisher, Waltham, MA). The limit of detection of this assay is
202 estimated to be 0.2 genome equivalents/ μ l (200 genome equivalents/ml) saliva. To determine the
203 vRNA load, samples were interpolated onto a standard curve consisting of serial 10-fold dilutions of *in*
204 *vitro* transcribed SARS-CoV-2 N gene RNA kindly provided by Nathan Grubaugh (Yale University) and
205 described by Dudley et al.³⁵.

206

207 Clinical samples

208 qRT-PCR was performed using the conditions described above for each of the 38 SARS-CoV-2
209 positive saliva samples individually; however, sample volume limitations required that for some
210 samples, only 100 μ l saliva was combined with 100 μ l of nuclease-free water prior to RNA isolation. In
211 addition, sample UWHC3 contained a lower volume than the remaining 37 samples so 50 μ l saliva was
212 combined with 50 μ l nuclease-free water and used for RNA isolation as described previously. Viral
213 loads in copies per microliter and corresponding cycle threshold numbers (Ct) are reported in Table 2.

214

215 **Results**

216 LOD estimation using contrived saliva samples

217 We assessed the LOD for minimally processed saliva samples collected from 25 volunteers over two
218 RT-LAMP experiments using irSARS-CoV-2 spiked into negative saliva samples (Figure 2A and 2B). In
219 our first experiment (S1-S3), we detected irSARS-CoV-2 in at least 1 of 2 replicates at 1×10^2 copies/ μ l
220 (1×10^5 copies/ml) in all 3 samples (Figure 2A). In our second experiment (S4-S25), we detected
221 irSARS-CoV-2 by RT-LAMP in 2/2 replicates at 5×10^4 copies/ μ l (5×10^7 copies/ml) for 95% of samples,
222 at 5×10^3 copies/ μ l (5×10^6 copies/ml) for 62% of samples, and at 500 copies/ μ l (5×10^5 copies/ml) for 10%
223 of samples. When we included samples called positive in at least 1 of 2 replicates (see Methods), the
224 percentage of contrived samples positive by RT-LAMP at each of the aforementioned dilutions were
225 100%, 90%, and 33.3% respectively (Figure 2B). One sample was omitted from the analysis because it
226 turned yellow before the RT-LAMP reaction incubation began and was therefore uninterpretable.
227 Because in POC testing we defined a positive RT-LAMP result as an observed post-incubation color
228 change to yellow in at least 1 replicate, these results suggested that our 90% LOD is between 1×10^2
229 and 5×10^3 copies/ μ l (1×10^5 - 5×10^6 copies/ml).

230

231 LOD estimation using clinical samples

232 To assess the performance of SARS-CoV-2 RT-LAMP in known SARS-CoV-2 positive saliva samples
233 as opposed to contrived positive samples, we acquired deidentified, discarded saliva samples collected
234 from 38 patients with laboratory confirmed SARS-CoV-2 from UWHC. Nineteen of 38 undiluted saliva
235 samples were positive for SARS-CoV-2 in 2/2 replicates by RT-LAMP (Figure 3; Table 2). Two
236 additional samples were positive in 1 of 2 replicates. Quantitative RT-PCR data showed that the viral
237 RNA (vRNA) loads of the positive samples ranged from 131 copies/ μ l to 5.7×10^4 copies/ μ l (1.31×10^5 -
238 5.71×10^7 copies/ml) which was consistent with our LOD range for contrived samples (Table 3).
239 Furthermore, for the 13 samples diluted 10-fold and 100-fold, detection decreased with increasing
240 dilution factor (Table 4).

241

242 POC SARS-CoV-2 RT-LAMP testing

243 From July 16 to November 19, 2020, SARS-CoV-2 RT-LAMP was used to test a total of 4,704 samples
244 collected from 5 locations. Participants were enrolled into the study regardless of their SARS-CoV-2
245 symptom status on the day of testing. Seventy-one percent of the samples were obtained from
246 individuals at two research facilities, 11% from two K-12 schools, and 18% from an athletics program
247 (Supplemental Table 1). A total of 21 samples were identified as positive for SARS-CoV-2 by RT-LAMP
248 based on a colorimetric change from pink/orange to yellow in at least 1 of 2 sample replicates. Similar
249 to our experience with our contrived LOD samples, about 0.40% (19/4,704) of samples collected during
250 POC testing exhibited a color change to yellow prior to RT-LAMP assay amplification and were
251 therefore uninterpretable. Follow up qRT-PCR testing was conducted on each sample that appeared
252 positive after the 30 minute amplification reaction throughout the study to determine vRNA load. Twelve
253 of the 21 samples called positive in RT-LAMP had detectable SARS-CoV-2 RNA by qRT-PCR. Viral
254 RNA loads of these samples ranged from 8.58 copies/ μ l to 3.62×10^5 copies/ μ l (8.58×10^3 copies/ml-
255 3.62×10^8 copies/ml) with a median of 504.5 copies/ μ l (5.04×10^5 copies/ml) (Table 4). Eight of the saliva
256 samples identified as positive by RT-LAMP were negative by qRT-PCR, suggesting that they were
257 false-positive RT-LAMP results. One RT-LAMP-positive sample was not tested by qRT-PCR because
258 the participant did not consent to additional molecular testing. For volunteers who consented to
259 additional research testing from July 16 to September 17, qRT-PCR testing was conducted for pools of
260 6 or fewer for all residual, heat-inactivated samples that appeared unambiguously negative by RT-
261 LAMP. A total of 421 RT-LAMP-negative pools (2,493 samples) were tested to estimate the number of
262 SARS-CoV-2-positive samples missed by RT-LAMP. Quantitative RT-PCR detected SARS-CoV-2
263 nucleic acids in 5 pools of RT-LAMP-negative samples. Four out of five of the positive pools contained
264 levels of SARS-CoV-2 that were below the estimated LOD range for RT-LAMP using crude samples
265 with vRNA load estimates of 0.236, 0.444, 0.460, 37.5, and 142 copies/ μ l (236, 444, 460, 3.75×10^4 , and
266 1.42×10^5 copies/ml). Taken together, the low prevalence of SARS-CoV-2 in our volunteer testing
267 population (0.36%, including RT-LAMP-negative, qRT-PCR-positive pools) and the low vRNA load of
268 pools positive by follow-up qRT-PCR, suggest that these 5 pools likely contained only a single positive
269 sample each and suggests a false-negative rate of 0.02% (5/2,493) (Table 4).

270

271 **Discussion**

272 Strategic surveillance testing of asymptomatic individuals has been suggested as an important
273 mitigation strategy for places at high risk for close contact, indoor SARS-CoV-2 transmission: schools,
274 workplaces, places of worship, and prisons, among others. Decentralized, mobile RT-LAMP-based
275 POC testing workflows can provide same-day results which can enable people with potential SARS-
276 CoV-2 infections to quickly self-isolate and then obtain confirmatory diagnostic testing. The low per-test
277 cost (approximately \$7 per sample tested in duplicate) allows for repeated testing to identify incident
278 infections and reduce the duration of a potentially infected individual's exposure to others. While RT-
279 LAMP is not as sensitive as diagnostic qRT-PCR tests in laboratory testing, qRT-PCR tests require
280 centralized labs, which in turn leads to lengthy turnaround times. Over a period of 18 weeks, we
281 performed 4,704 SARS-CoV-2 tests across 5 sites using a simple, saliva-based, direct RT-LAMP
282 assay. This work demonstrates the scalability of decentralized, mobile RT-LAMP-based testing and
283 addresses a key knowledge gap of how POC RT-LAMP testing performs outside of well-equipped
284 molecular biology laboratories.

285

286 Our initial experiments using direct RT-LAMP with contrived saliva samples from a total of 25 donors
287 demonstrated a LOD that ranged from 1×10^2 copies/ μ l (100% in at least 1 replicate for S1-S3) to 5×10^3
288 copies/ μ l (90% in at least one replicate for S4-S25). Taken together, these data suggest that the actual
289 LOD for RT-LAMP without RNA isolation may be dependent on the individual sample due to
290 heterogeneity of saliva pH and composition⁴¹⁻⁴³. Overall, the RT-LAMP results for 38 clinical saliva
291 samples obtained from SARS-CoV-2-positive individuals at the UWHC, were consistent with those for
292 the contrived samples. We recognize that more clinical samples are required for a comprehensive
293 clinical validation, but the LOD observed in clinical samples is further supported by the low vRNA loads
294 obtained from qRT-PCR-confirmed SARS-CoV-2-positive samples identified in our volunteer population
295 (Table 4). The performance of our RT-LAMP POC testing workflow demonstrates that inexpensive,
296 mobile testing can be successfully performed outdoors or in other non-traditional laboratory settings to

297 identify SARS-CoV-2-positive individuals regardless of whether or not symptoms are present. Our
298 observed SARS-CoV-2 RT-LAMP positivity rate was 0.25% (12/4,704) for samples confirmed by follow-
299 up qRT-PCR. Interestingly, the positivity rate of 0.25% in our volunteer population was lower than
300 expected given the disease activity in our region during this period of time was listed as “critically high”,
301 particularly between September 1 and November 19, 2020 when the county had a 5.42% positivity rate
302 (19,031 positive tests out of 350,722)^{44, 45}. The low positivity rate in our volunteer population may be
303 partly explained by the fact that 71% of tested saliva specimens came from two research facilities
304 where mask wearing and physical distancing guidelines were implemented early in the pandemic and
305 followed relatively stringently (Supplemental Table 1). Volunteers for nonsymptomatic research testing
306 might also have a different risk profile from the overall population.

307

308 Potential drawbacks of colorimetric RT-LAMP-based surveillance for SARS-CoV-2 as described here
309 include the fact that minimally-processed saliva can result in variable reaction color change without the
310 presence of the target RNA. However, modifications of RT-LAMP-based SARS-CoV-2 assays to
311 reduce saliva sample variability, improve result ambiguity, and increase throughput have recently been
312 reported elsewhere and may improve the implementation of RT-LAMP-based assays for POC use^{46–50}.
313 In addition, we relied on a manual RT-LAMP format during POC testing. Reading assays “by eye”
314 inevitably results in a somewhat subjective determination of positives. Reducing false-positive results in
315 our POC volunteer populations required consistent use of duplicate reactions for each individual, which
316 reduced assay throughput and increased the per-sample cost. Furthermore, the testing landscape
317 changed dramatically during the months we performed RT-LAMP testing. The first non-instrumented
318 antigen test, the Abbott BinaxNOW COVID-19 Ag CARD, received FDA EUA approval in the United
319 States on August 26, 2020⁵¹. While the sensitivity of RT-LAMP is broadly comparable to the Abbott
320 BinaxNOW antigen test (reported as 1.6×10^4 - 4.3×10^4 vRNA copies; Ct 30.3-28.8), because the former
321 is technically straightforward and can be used as a SARS-CoV-2 diagnostic at testing sites operating
322 under a Clinical Laboratory Improvement Amendments (CLIA) waiver, it is likely a better choice for
323 rapid turnaround, on-site testing in most circumstances⁵². However, even with the existence of antigen

324 tests, RT-LAMP surveillance programs still have a place as part of a comprehensive SARS-CoV-2 risk
325 mitigation strategy, especially in areas where access to antigen tests is limited.

326

327 There are advantages to continuing saliva-based RT-LAMP surveillance testing. Importantly, the supply
328 of diagnostic antigen tests remains tightly constrained, and in the United States, these tests are
329 available only through government contracts. Widespread testing of individuals without symptoms with
330 such a scarce resource may not be a wise use of these limited tests. Furthermore, recent studies have
331 shown that antigen test performance may differ between asymptomatic and symptomatic populations.
332 Compared to qRT-PCR, the sensitivity of FDA-approved antigen tests, BinaxNOW and the Quidel Sofia
333 SARS Antigen Fluorescent Immunoassay, were 35% and 41% in asymptomatic individuals and 64%
334 and 80% in symptomatic individuals, respectively^{53, 54}. BinaxNOW is currently only approved for use in
335 symptomatic individuals, within 7 days of symptom onset, and samples are required to be tested within
336 an hour of collection⁵⁵. In contrast, RT-LAMP reagents do not require a government contract and can
337 be acquired readily from commercial and non-commercial sources, and they can also be used more
338 flexibly for surveillance purposes because RT-LAMP is not limited to use in symptomatic individuals⁵⁶.
339 Additionally, user acceptance of testing may also favor saliva-based RT-LAMP as it is less invasive
340 than nasal swab-based tests. While an individual BinaxNOW test is rapid, performing several tests
341 during a single day could cumulatively take as long as processing a batch of tests by RT-LAMP. For
342 these reasons, RT-LAMP may still be the preferred testing method to incorporate into a local program.
343 In Madison, WI, two local schools have implemented RT-LAMP surveillance programs modeled on the
344 program described here. Implementation of each program required approximately 50 hours of hands-on
345 training by our group. School staff were trained in adherence to regulations pertaining to non-diagnostic
346 testing and to competently perform RT-LAMP assays. Each school also needed time and resources to
347 acquire the modest lab infrastructure necessary to perform RT-LAMP. In addition, a larger saliva-based
348 RT-LAMP surveillance program has been successfully implemented in school districts in the greater
349 Chicago suburbs^{57, 58}.

350

351 A looming question for both RT-LAMP and antigen testing programs is whether the real-world
352 effectiveness of frequently testing individuals without symptoms mirrors the theoretical benefits. Several
353 important considerations that we factored into the design of RT-LAMP testing remain true:
354 nonsymptomatic individuals account for up to 59% of all transmission (24% asymptomatic and 35%
355 presymptomatic); low-sensitivity tests are able to effectively identify those with high levels of virus
356 shedding, and individuals with high viral loads are likely to be responsible for a significant fraction of
357 onward community transmission; and the duration of peak infectiousness is short, so lengthy lags in
358 reporting test results could miss a critical window of high transmissibility^{10, 59}. Conversely, high-quality,
359 exceptionally well-resourced testing programs such as those at the White House and among
360 intercollegiate athletic programs have failed to stop outbreaks⁶⁰. The latter deserves special note:
361 outbreaks in these programs occurred in spite of 100% adherence to daily testing. Data from daily
362 sampling of individuals with incident SARS-CoV-2 infection suggests that the mean duration of time
363 from infection to peak viral shedding is approximately three days, but some individuals potentially reach
364 peak viral shedding in under one day⁶¹. The potential for an extremely rapid increase in viral load,
365 which likely parallels shedding of infectious virus, means that in some cases, even daily testing might
366 be insufficient to protect a community from someone who is newly infected.

367

368 Perhaps more importantly, the benefit of frequent testing of individuals without symptoms with RT-
369 LAMP or other assays may be substantially undermined by risk disinhibition. When people are tested
370 frequently, they may both underestimate their own risk of becoming infected in the interval between
371 tests and overestimate the possibility that their similarly tested contacts are uninfected; anecdotal
372 evidence of this phenomenon is perhaps most vividly seen in the September 26, 2020 White House
373 Rose Garden reception for Justice Amy Coney Barrett, in which many attendees were photographed
374 not wearing masks nor following guidelines for physical distancing⁶². If infections among people without
375 symptoms are rare (~0.4% of tests in this study, when combining RT-LAMP and pooled qRT-PCR
376 positives), but 10% of the tested population views testing as license for increased risk-taking, is
377 frequent testing of symptomless people a net positive? Appropriate messaging to the community is

378 essential with any testing program to ensure the population understands the meaning of a test result.
379 Such issues will require an optimization of messaging to mitigate the impact of risk disinhibition to the
380 extent possible.

381
382 Ultimately, this study provides proof of concept and guidance for how decentralized rapid testing could
383 be implemented in a mobile testing scenario, which may be especially useful in resource-limited
384 settings. Despite the caveats presented above, we identified 12 SARS-CoV-2-positive individuals and
385 likely prevented onward transmission from those individuals who otherwise would not know they were
386 positive. Rapid tests, although less sensitive than qRT-PCR, have shorter turnaround times and could
387 bridge the gap between SARS-CoV-2 surveillance and diagnostic testing. POC testing can be effective
388 for identifying asymptomatic individuals but must be used in conjunction with appropriate messaging
389 and other mitigation strategies to effectively reduce SARS-CoV-2 transmission.

390

391 **Acknowledgments**

392 This work was made possible by financial support through NIH Rapid Acceleration of Diagnostics (3
393 U54 EB027690-02S1). Additional funding was provided in part by the office of the director, National
394 Institutes of Health, under award number P51OD011106 to the Wisconsin National Primate Research
395 Center (WNPRC), University of Wisconsin-Madison. This research was conducted in part at a facility
396 constructed with support from Research Facilities Improvement Program grant numbers RR15459-01
397 and RR020141-01. The content is solely the responsibility of the authors and does not necessarily
398 represent the official views of the National Institutes of Health. Additional funding was provided by the
399 Wisconsin Alumni Research Foundation (WARF) COVID-19 Challenge. A.S.H. and C.M.C. have been
400 supported by the National Institutes of Health National Research Service Award T32 AI007414. We are
401 grateful for the assistance of both the University of Wisconsin Institutional Biosafety Committee and the
402 Health Sciences Institutional Review Board at University of Wisconsin-Madison. We also acknowledge
403 Christopher E. Mason, PhD Cornell-Weill Medical School and Alison Kriegel, PhD Medical College of
404 Wisconsin as well as public employees from Racine, WI in their partnership to this project. We would

405 like to thank Abigail Johnson, Abby Weaver, Abdel Daoud, Allison Eierman, Ben Boerigter, Clarissa
406 Tjoanda, Julia Pulokas, Julie Chen, Ryan Anderson, Will Vuyk, Jenny Lee, Max Bobholz, Sam
407 Havlicek, Hunter Ries, Nicole Minerva, Emma Boehm, Elizabeth Brown, and Jayden Lee for their help
408 preparing and organizing supplies for POC testing. David Beebe, Nate Grubaugh, and Kristian
409 Andersen provided useful technical discussions. We thank Eli O'Connor for assistance with POC label
410 generation and template preparation. We are grateful to the study volunteers and organizations that
411 allowed us to evaluate this mobile testing strategy.

412

413 **Author Contributions**

414 CMN, MDR, RWW, DMD, CGS, DHO, SLO contributed to assay development and optimization. DMD,
415 MTM, RWW, CMN, MRS, AMW, MIB, KNF, MDR, LAH, OEH, RVM, CMC, SLO, MRR, TCF, TMP,
416 EDS, LMS, EKN contributed to point of care testing and PCR confirmation. CMN, MDR, DMD, DHO
417 contributed to data analysis, interpretation, and writing. JAK, DHO, SLO, HEB, TCF, MTM, AKH, LAH,
418 CMC, KLH, CBB, KNF contributed to logistics and organization of point of care testing. CBB, KLH
419 contributed to obtaining IRB and worked closely with the institutional biosafety committee on other
420 regulatory responsibilities. MAA, ASH, WMR contributed to providing residual SARS-CoV-2 positive
421 saliva samples and sample information from the University of Wisconsin Hospitals and Clinics. All
422 authors contributed to editing the manuscript.

423

424 **Regulatory oversight**

425 This work was performed under approved UW-Madison Health Sciences IRB #2020-0855 and #2020-
426 1142.

427

428

429

430

431

432

433

434

435 **References**

- 436 1. Silverman JD, Hupert N, Washburne AD. Using influenza surveillance networks to estimate state-
437 specific prevalence of SARS-CoV-2 in the United States. *Sci Transl Med* 2020,
438 1210.1126/scitranslmed.abc1126
- 439 2. Havers FP, Reed C, Lim T, Montgomery JM, Klena JD, Hall AJ, Fry AM, Cannon DL, Chiang CF,
440 Gibbons A, Krapivunaya I, Morales-Betoulle M, Roguski K, Rasheed MAU, Freeman B, Lester S,
441 Mills L, Carroll DS, Owen SM, Johnson JA, Semenova V, Blackmore C, Blog D, Chai SJ, Dunn A,
442 Hand J, Jain S, Lindquist S, Lynfield R, Pritchard S, Sokol T, Sosa L, Turabelidze G, Watkins SM,
443 Wiesman J, Williams RW, Yendell S, Schiffer J, Thornburg NJ. Seroprevalence of Antibodies to
444 SARS-CoV-2 in 10 Sites in the United States, March 23-May 12, 2020. *JAMA Intern Med* 2020,
445 10.1001/jamainternmed.2020.4130
- 446 3. Esbin MN, Whitney ON, Chong S, Maurer A, Darzacq X, Tjian R. Overcoming the bottleneck to
447 widespread testing: a rapid review of nucleic acid testing approaches for COVID-19 detection.
448 *RNA* 2020, 26:771-783. 10.1261/rna.076232.120
- 449 4. Schuetz AN, Hemarajata P, Mehta N, Campbell S, Mitchell S, Palavecino E, Butler-Wu S, Miller
450 MB. When Should Asymptomatic Persons Be Tested for COVID-19. *J Clin Microbiol* 2020,
451 5910.1128/JCM.02563-20
- 452 5. Arons MM, Hatfield KM, Reddy SC, Kimball A, James A, Jacobs JR, Taylor J, Spicer K, Bardossy
453 AC, Oakley LP, Tanwar S, Dyal JW, Harney J, Chisty Z, Bell JM, Methner M, Paul P, Carlson CM,
454 McLaughlin HP, Thornburg N, Tong S, Tamin A, Tao Y, Uehara A, Harcourt J, Clark S, Brostrom-

- 455 Smith C, Page LC, Kay M, Lewis J, Montgomery P, Stone ND, Clark TA, Honein MA, Duchin JS,
456 Jernigan JA. Presymptomatic SARS-CoV-2 Infections and Transmission in a Skilled Nursing
457 Facility. *N Engl J Med* 2020, 382:2081-2090. 10.1056/NEJMoa2008457
- 458 6. Bai Y, Yao L, Wei T, Tian F, Jin DY, Chen L, Wang M. Presumed Asymptomatic Carrier
459 Transmission of COVID-19. *JAMA* 2020, 323:1406-1407. 10.1001/jama.2020.2565
- 460 7. Rothe C, Schunk M, Sothmann P, Bretzel G, Froeschl G, Wallrauch C, Zimmer T, Thiel V, Janke
461 C, Guggemos W, Seilmaier M, Drosten C, Vollmar P, Zwirgmaier K, Zange S, Wölfel R,
462 Hoelscher M. Transmission of 2019-nCoV Infection from an Asymptomatic Contact in Germany. *N*
463 *Engl J Med* 2020, 382:970-971. 10.1056/NEJMc2001468
- 464 8. Quicke K, Gallichote E, Sexton N, Young M, Janich A, Gahm G, Carlton EJ, Ehrhart N, Ebel GD.
465 Longitudinal Surveillance for SARS-CoV-2 RNA Among Asymptomatic Staff in Five Colorado
466 Skilled Nursing Facilities: Epidemiologic, Virologic and Sequence Analysis. *medRxiv* 2020,
467 10.1101/2020.06.08.20125989
- 468 9. Furukawa NW, Brooks JT, Sobel J. Evidence Supporting Transmission of Severe Acute
469 Respiratory Syndrome Coronavirus 2 While Presymptomatic or Asymptomatic. *Emerg Infect Dis*
470 2020, 26:10.3201/eid2607.201595
- 471 10. Johansson MA, Quandelacy TM, Kada S, Prasad PV, Steele M, Brooks JT, Slayton RB,
472 Biggerstaff M, Butler JC. SARS-CoV-2 Transmission From People Without COVID-19 Symptoms.
473 *JAMA Netw Open* 2021, 4:e2035057. 10.1001/jamanetworkopen.2020.35057
- 474 11. Lavezzo E, Franchin E, Ciavarella C, Cuomo-Dannenburg G, Barzon L, Del Vecchio C, Rossi L,
475 Manganelli R, Loregian A, Navarin N, Abate D, Sciro M, Merigliano S, De Canale E, Vanuzzo MC,
476 Besutti V, Saluzzo F, Onelia F, Pacenti M, Parisi SG, Carretta G, Donato D, Flor L, Cocchio S,
477 Masi G, Sperduti A, Cattarino L, Salvador R, Nicoletti M, Caldart F, Castelli G, Nieddu E, Labella
478 B, Fava L, Drigo M, Gaythorpe KAM, Brazzale AR, Toppo S, Trevisan M, Baldo V, Donnelly CA,
479 Ferguson NM, Dorigatti I, Crisanti A. Suppression of a SARS-CoV-2 outbreak in the Italian
480 municipality of Vo'. *Nature* 2020, 584:425-429. 10.1038/s41586-020-2488-1

- 481 12. Zou L, Ruan F, Huang M, Liang L, Huang H, Hong Z, Yu J, Kang M, Song Y, Xia J, Guo Q, Song
482 T, He J, Yen HL, Peiris M, Wu J. SARS-CoV-2 Viral Load in Upper Respiratory Specimens of
483 Infected Patients. *N Engl J Med* 2020, 382:1177-1179. 10.1056/NEJMc2001737
- 484 13. Lee S, Kim T, Lee E, Lee C, Kim H, Rhee H, Park SY, Son HJ, Yu S, Park JW, Choo EJ, Park S,
485 Loeb M, Kim TH. Clinical Course and Molecular Viral Shedding Among Asymptomatic and
486 Symptomatic Patients With SARS-CoV-2 Infection in a Community Treatment Center in the
487 Republic of Korea. *JAMA Intern Med* 2020, 180:1-6. 10.1001/jamainternmed.2020.3862
- 488 14. Mina MJ, Parker R, Larremore DB. Rethinking Covid-19 Test Sensitivity - A Strategy for
489 Containment. *N Engl J Med* 2020, 383:e120. 10.1056/NEJMp2025631
- 490 15. Rivers C, Silcox C, Potter C, Franklin M, Ray R, Gill M, McClellan M. Risk Assessment and
491 Testing Protocols for Reducing SARS-CoV-2 Transmission in K-12 Schools. Duke Margolis
492 Center for Health Policy 2020
- 493 16. Dibner KA, Schweingruber HA, Christakis DA. Reopening K-12 Schools During the COVID-19
494 Pandemic: A Report From the National Academies of Sciences, Engineering, and Medicine.
495 *JAMA* 2020, 324:833-834. 10.1001/jama.2020.14745
- 496 17. Notomi T, Okayama H, Masubuchi H, Yonekawa T, Watanabe K, Amino N, Hase T. Loop-
497 mediated isothermal amplification of DNA. *Nucleic Acids Res* 2000, 28:E63.
498 10.1093/nar/28.12.e63
- 499 18. Mahony J, Chong S, Bulir D, Ruyter A, Mwawasi K, Waltho D. Multiplex loop-mediated isothermal
500 amplification (M-LAMP) assay for the detection of influenza A/H1, A/H3 and influenza B can
501 provide a specimen-to-result diagnosis in 40 min with single genome copy sensitivity. *J Clin Virol*
502 2013, 58:127-131. 10.1016/j.jcv.2013.06.006
- 503 19. McKenna JP, Cox C, Fairley DJ, Burke R, Shields MD, Watt A, Coyle PV. Loop-mediated
504 isothermal amplification assay for rapid detection of *Streptococcus agalactiae* (group B
505 streptococcus) in vaginal swabs - a proof of concept study. *J Med Microbiol* 2017, 66:294-300.
506 10.1099/jmm.0.000437

- 507 20. Gonçalves DDS, Hooker DJ, Dong Y, Baran N, Kyrylos P, Iturbe-Ormaetxe I, Simmons CP,
508 O'Neill SL. Detecting wMel Wolbachia in field-collected *Aedes aegypti* mosquitoes using loop-
509 mediated isothermal amplification (LAMP). *Parasit Vectors* 2019, 12:404. 10.1186/s13071-019-
510 3666-6 10.1186/s13071-019-3666-6
- 511 21. Romero Romero JL, Carver GD, Arce Johnson P, Perry KL, Thompson JR. A rapid, sensitive and
512 inexpensive method for detection of grapevine red blotch virus without tissue extraction using
513 loop-mediated isothermal amplification. *Arch Virol* 2019, 164:1453-1457. 10.1007/s00705-019-
514 04207-y
- 515 22. Calvert AE, Biggerstaff BJ, Tanner NA, Lauterbach M, Lanciotti RS. Rapid colorimetric detection
516 of Zika virus from serum and urine specimens by reverse transcription loop-mediated isothermal
517 amplification (RT-LAMP). *PLoS One* 2017, 12:e0185340. 10.1371/journal.pone.0185340
- 518 23. Baek YH, Um J, Antigua KJC, Park JH, Kim Y, Oh S, Kim YI, Choi WS, Kim SG, Jeong JH, Chin
519 BS, Nicolas HDG, Ahn JY, Shin KS, Choi YK, Park JS, Song MS. Development of a reverse
520 transcription-loop-mediated isothermal amplification as a rapid early-detection method for novel
521 SARS-CoV-2. *Emerg Microbes Infect* 2020, 9:998-1007. 10.1080/22221751.2020.1756698
- 522 24. Lamb LE, Bartolone SN, Ward E, Chancellor MB. Rapid detection of novel coronavirus/Severe
523 Acute Respiratory Syndrome Coronavirus 2 (SARS-CoV-2) by reverse transcription-loop-
524 mediated isothermal amplification. *PLoS One* 2020, 15:e0234682. 10.1371/journal.pone.0234682
- 525 25. Huang WE, Lim B, Hsu CC, Xiong D, Wu W, Yu Y, Jia H, Wang Y, Zeng Y, Ji M, Chang H, Zhang
526 X, Wang H, Cui Z. RT-LAMP for rapid diagnosis of coronavirus SARS-CoV-2. *Microb Biotechnol*
527 2020, 13:950-961. 10.1111/1751-7915.13586
- 528 26. Kitagawa Y, Orihara Y, Kawamura R, Imai K, Sakai J, Taramoto N, Matsuoka M, Takeuchi S,
529 Maesaki S, Maeda T. Evaluation of rapid diagnosis of novel coronavirus disease (COVID-19)
530 using loop-mediated isothermal amplification. *J Clin Virol* 2020, 129:104446.
531 10.1016/j.jcv.2020.104446

- 532 27. Lu R, Wu X, Wan Z, Li Y, Jin X, Zhang C. A Novel Reverse Transcription Loop-Mediated
533 Isothermal Amplification Method for Rapid Detection of SARS-CoV-2. *Int J Mol Sci* 2020,
534 2110.3390/ijms21082826
- 535 28. Lu R, Wu X, Wan Z, Li Y, Zuo L, Qin J, Jin X, Zhang C. Development of a Novel Reverse
536 Transcription Loop-Mediated Isothermal Amplification Method for Rapid Detection of SARS-CoV-
537 2. *Viol Sin* 2020, 35:344-347. 10.1007/s12250-020-00218-1 10.1007/s12250-020-00218-1
- 538 29. Yan C, Cui J, Huang L, Du B, Chen L, Xue G, Li S, Zhang W, Zhao L, Sun Y, Yao H, Li N, Zhao
539 H, Feng Y, Liu S, Zhang Q, Liu D, Yuan J. Rapid and visual detection of 2019 novel coronavirus
540 (SARS-CoV-2) by a reverse transcription loop-mediated isothermal amplification assay. *Clin*
541 *Microbiol Infect* 2020, 26:773-779. 10.1016/j.cmi.2020.04.001
- 542 30. Azzi L, Carcano G, Gianfagna F, Grossi P, Gasperina DD, Genoni A, Fasano M, Sessa F,
543 Tettamanti L, Carinci F, Maurino V, Rossi A, Tagliabue A, Baj A. Saliva is a reliable tool to detect
544 SARS-CoV-2. *J Infect* 2020, 81:e45-e50. 10.1016/j.jinf.2020.04.005
- 545 31. Nagura-Ikeda M, Imai K, Tabata S, Miyoshi K, Murahara N, Mizuno T, Horiuchi M, Kato K, Imoto
546 Y, Iwata M, Mimura S, Ito T, Tamura K, Kato Y. Clinical Evaluation of Self-Collected Saliva by
547 Quantitative Reverse Transcription-PCR (RT-qPCR), Direct RT-qPCR, Reverse Transcription-
548 Loop-Mediated Isothermal Amplification, and a Rapid Antigen Test To Diagnose COVID-19. *J Clin*
549 *Microbiol* 2020, 5810.1128/JCM.01438-20
- 550 32. Wyllie AL, Fournier J, Casanovas-Massana A, Campbell M, Tokuyama M, Vijayakumar P, Warren
551 JL, Geng B, Muenker MC, Moore AJ, Vogels CBF, Petrone ME, Ott IM, Lu P, Venkataraman A,
552 Lu-Culligan A, Klein J, Earnest R, Simonov M, Datta R, Handoko R, Naushad N, Sewanan LR,
553 Valdez J, White EB, Lapidus S, Kalinich CC, Jiang X, Kim DJ, Kudo E, Linehan M, Mao T,
554 Moriyama M, Oh JE, Park A, Silva J, Song E, Takahashi T, Taura M, Weizman OE, Wong P,
555 Yang Y, Bermejo S, Odio CD, Omer SB, Dela Cruz CS, Farhadian S, Martinello RA, Iwasaki A,
556 Grubaugh ND, Ko AI. Saliva or Nasopharyngeal Swab Specimens for Detection of SARS-CoV-2.
557 *N Engl J Med* 2020, 383:1283-1286. 10.1056/NEJMc2016359

- 558 33. To KK, Tsang OT, Yip CC, Chan KH, Wu TC, Chan JM, Leung WS, Chik TS, Choi CY, Kandamby
559 DH, Lung DC, Tam AR, Poon RW, Fung AY, Hung IF, Cheng VC, Chan JF, Yuen KY. Consistent
560 Detection of 2019 Novel Coronavirus in Saliva. *Clin Infect Dis* 2020, 71:841-843.
561 10.1093/cid/ciaa149
- 562 34. Yokota I, Shane PY, Okada K, Unoki Y, Yang Y, Inao T, Sakamaki K, Iwasaki S, Hayasaka K,
563 Sugita J, Nishida M, Fujisawa S, Teshima T. Mass screening of asymptomatic persons for SARS-
564 CoV-2 using saliva. *Clin Infect Dis* 2020, 10.1093/cid/ciaa1388
- 565 35. Dudley DM, Newman CM, Weiler AM, Ramuta MD, Shortreed CG, Heffron AS, Accola MA,
566 Rehrauer WM, Friedrich TC, O'Connor DH. Optimizing direct RT-LAMP to detect transmissible
567 SARS-CoV-2 from primary nasopharyngeal swab samples. *PLoS One* 2020, 15:e0244882.
568 10.1371/journal.pone.0244882
- 569 36. Ott IM, Strine MS, Watkins AE, Boot M, Kalinich CC, Harden CA, Vogels CBF, Casanovas-
570 Massana A, Moore AJ, Muenker MC, Nakahata M, Tokuyama M, Nelson A, Fournier J, Bermejo
571 S, Campbell M, Datta R, Dela Cruz CS, Farhadian SF, Ko AI, Iwasaki A, Grubaugh ND, Wilen CB,
572 Wyllie AL. Simply saliva: stability of SARS-CoV-2 detection negates the need for expensive
573 collection devices. *medRxiv* 2020, 10.1101/2020.08.03.20165233
- 574 37. Kim YI, Casel MAB, Kim SM, Kim SG, Park SJ, Kim EH, Jeong HW, Poo H, Choi YK.
575 Development of severe acute respiratory syndrome coronavirus 2 (SARS-CoV-2) thermal
576 inactivation method with preservation of diagnostic sensitivity. *J Microbiol* 2020, 58:886-891.
577 10.1007/s12275-020-0335-6 10.1007/s12275-020-0335-6
- 578 38. Lalli MA, Langmade SJ, Chen X, Fronick CC, Sawyer CS, Burcea LC, Wilkinson MN, Fulton RS,
579 Heinz M, Buchser WJ, Head RD, Mitra RD, Milbrandt J. Rapid and extraction-free detection of
580 SARS-CoV-2 from saliva with colorimetric LAMP. *medRxiv* 2020, 10.1101/2020.05.07.20093542
- 581 39. Broughton JP, Deng X, Yu G, Fasching CL, Servellita V, Singh J, Miao X, Streithorst JA,
582 Granados A, Sotomayor-Gonzalez A, Zorn K, Gopez A, Hsu E, Gu W, Miller S, Pan CY, Guevara
583 H, Wadford DA, Chen JS, Chiu CY. CRISPR-Cas12-based detection of SARS-CoV-2. *Nat*
584 *Biotechnol* 2020, 38:870-874. 10.1038/s41587-020-0513-4

- 585 40. Color Genomics. SARS-CoV-2 LAMP Diagnostic Assay. 2020. [https://www.color.com/wp-](https://www.color.com/wp-content/uploads/2020/05/LAMP-Diagnostic-Assay.pdf)
586 [content/uploads/2020/05/LAMP-Diagnostic-Assay.pdf](https://www.color.com/wp-content/uploads/2020/05/LAMP-Diagnostic-Assay.pdf).
- 587 41. Humphrey SP, Williamson RT. A review of saliva: normal composition, flow, and function. *J*
588 *Prosthet Dent* 2001, 85:162-169. 10.1067/mpr.2001.113778
- 589 42. Tanaka M, Masuda M. Concentration and individual variation of inorganic ions in unstimulated
590 whole saliva. *Kokubyo Gakkai Zasshi* 2000, 67:46-51. 10.5357/koubyou.67.46
- 591 43. Varga G. Physiology of the salivary glands. *Surgery (Oxford)* 2012, 30:578-583.
592 <https://doi.org/10.1016/j.mpsur.2012.09.010>
- 593 44. Public Health Madison and Dane County. Weekly COVID-19 Core Data by Date. 2021.
594 <https://www.publichealthmdc.com/coronavirus/forward-dane/data>.
- 595 45. University of Wisconsin-Madison. COVID-19 Response Dashboard 2020. 2021.
596 <https://covidresponse.wisc.edu/dashboard-2020/>.
- 597 46. Howson ELA, Kidd SP, Armson B, Goring A, Sawyer J, Cassar C, Cross D, Lewis T, Hockey J,
598 Rivers S, Cawthraw S, Banyard A, Anderson P, Rahou S, Andreou M, Morant N, Clark D, Walsh
599 C, Laxman S, Houghton R, Slater-Jefferies J, Costello P, Brown I, Cortes N, Godfrey KM, Fowler
600 VL. Preliminary optimisation of a simplified sample preparation method to permit direct detection
601 of SARS-CoV-2 within saliva samples using reverse-transcription loop-mediated isothermal
602 amplification (RT-LAMP). *J Virol Methods* 2021, 289:114048. 10.1016/j.jviromet.2020.114048
- 603 47. Janíková M, Hodosy J, Boor P, Klempa B, Celec P. Loop-mediated isothermal amplification for
604 the detection of SARS-CoV-2 in saliva. *Microb Biotechnol* 2021, 14:307-316. 10.1111/1751-
605 7915.13737
- 606 48. Diaz L, Johnson BE, Jenkins DM. Real-time optical analysis of a colorimetric LAMP assay for
607 SARS-CoV-2 in saliva with a handheld instrument improves accuracy compared to endpoint
608 assessment. *medRxiv* 2021, <https://doi.org/10.1101/2021.01.13.21249412>
- 609 49. Brown TA, Schaefer KS, Tsang A, Yi HA, Grimm JB, Lemire AL, Jradi FM, Kim C, McGowan K,
610 Ritola K. Direct detection of SARS-CoV-2 RNA using high-contrast pH-sensitive dyes. *medRxiv*
611 2021, 2020.12. 26.20248878. <https://doi.org/10.1101/2020.12.26.20248878>

- 612 50. Yang Q, Meyerson NR, Clark SK, Paige CL, Fattor WT, Gilchrist AR, Barbachano-Guerrero A,
613 Healy BG, Worden-Sapper ER, Wu SS. Saliva TwoStep for rapid detection of asymptomatic
614 SARS-CoV-2 carriers. medRxiv 2021, 2020.07. 16.20150250.
615 <https://doi.org/10.1101/2020.07.16.20150250>
- 616 51. US Food and Drug Administration. COVID-19 Update: FDA Authorizes First Diagnostic Test
617 Where Results Can Be Read Directly From Testing Card. 2020. [https://www.fda.gov/news-](https://www.fda.gov/news-events/press-announcements/covid-19-update-fda-authorizes-first-diagnostic-test-where-results-can-be-read-directly-testing-card)
618 [events/press-announcements/covid-19-update-fda-authorizes-first-diagnostic-test-where-results-](https://www.fda.gov/news-events/press-announcements/covid-19-update-fda-authorizes-first-diagnostic-test-where-results-can-be-read-directly-testing-card)
619 [can-be-read-directly-testing-card](https://www.fda.gov/news-events/press-announcements/covid-19-update-fda-authorizes-first-diagnostic-test-where-results-can-be-read-directly-testing-card).
- 620 52. Pilarowski G, Lebel P, Sunshine S, Liu J, Crawford E, Marquez C, Rubio L, Chamie G, Martinez J,
621 Peng J, Black D, Wu W, Pak J, Laurie MT, Jones D, Miller S, Jacobo J, Rojas S, Rojas S,
622 Nakamura R, Tulier-Laiwa V, Petersen M, Havlir DV, DeRisi J. Performance characteristics of a
623 rapid SARS-CoV-2 antigen detection assay at a public plaza testing site in San Francisco. J Infect
624 Dis 2021, 10.1093/infdis/jiaa802
- 625 53. Prince-Guerra JL, Almendares O, Nolen LD, Gunn JKL, Dale AP, Buono SA, Deutsch-Feldman
626 M, Suppiah S, Hao L, Zeng Y, Stevens VA, Knipe K, Pompey J, Atherstone C, Bui DP, Powell T,
627 Tamin A, Harcourt JL, Shewmaker PL, Medrzycki M, Wong P, Jain S, Tejada-Strop A, Rogers S,
628 Emery B, Wang H, Petway M, Bohannon C, Folster JM, MacNeil A, Salerno R, Kuhnert-Tallman
629 W, Tate JE, Thornburg NJ, Kirking HL, Sheiban K, Kudrna J, Cullen T, Komatsu KK, Villanueva
630 JM, Rose DA, Neatherlin JC, Anderson M, Rota PA, Honein MA, Bower WA. Evaluation of Abbott
631 BinaxNOW Rapid Antigen Test for SARS-CoV-2 Infection at Two Community-Based Testing Sites
632 - Pima County, Arizona, November 3-17, 2020. MMWR Morb Mortal Wkly Rep 2021, 70:100-105.
633 [10.15585/mmwr.mm7003e3](https://doi.org/10.15585/mmwr.mm7003e3)
- 634 54. Pray IW, Ford L, Cole D, Lee C, Bigouette JP, Abedi GR, Bushman D, Delahoy MJ, Currie D,
635 Cherney B, Kirby M, Fajardo G, Caudill M, Langolf K, Kahrs J, Kelly P, Pitts C, Lim A, Aulik N,
636 Tamin A, Harcourt JL, Queen K, Zhang J, Whitaker B, Browne H, Medrzycki M, Shewmaker P,
637 Folster J, Bankamp B, Bowen MD, Thornburg NJ, Goffard K, Limbago B, Bateman A, Tate JE,
638 Gieryn D, Kirking HL, Westergaard R, Killerby M. Performance of an Antigen-Based Test for

- 639 Asymptomatic and Symptomatic SARS-CoV-2 Testing at Two University Campuses - Wisconsin,
640 September-October 2020. MMWR Morb Mortal Wkly Rep 2021, 69:1642-1647.
641 10.15585/mmwr.mm695152a3
- 642 55. US Food and Drug Administration. BinaxNOW COVID-19 Ag Card. 2020.
643 <https://www.fda.gov/media/141570/download>.
- 644 56. Alekseenko A, Barrett D, Pareja-Sanchez Y, Howard RJ, Strandback E, Ampah-Korsah H,
645 Rovšnik U, Zuniga-Veliz S, Klenov A, Malloo J, Ye S, Liu X, Reinius B, Elsässer SJ, Nyman T,
646 Sandh G, Yin X, Pelechano V. Direct detection of SARS-CoV-2 using non-commercial RT-LAMP
647 reagents on heat-inactivated samples. Sci Rep 2021, 11:1820. 10.1038/s41598-020-80352-8
648 10.1038/s41598-020-80352-8
- 649 57. Simon S. How A Chicago Dad Developed A Coronavirus Testing Program For His Son's School.
650 National Public Radio. 2020. [https://www.npr.org/2020/09/26/917185895/how-a-chicago-dad-](https://www.npr.org/2020/09/26/917185895/how-a-chicago-dad-developed-a-coronavirus-testing-program-for-his-sons-school)
651 [developed-a-coronavirus-testing-program-for-his-sons-school](https://www.npr.org/2020/09/26/917185895/how-a-chicago-dad-developed-a-coronavirus-testing-program-for-his-sons-school).
- 652 58. Chappell K. Coronavirus Saliva Screening Program Expands at Suburban Schools. NBC Chicago,
653 2020. [https://www.nbcchicago.com/news/local/coronavirus-saliva-screening-program-expands-at-](https://www.nbcchicago.com/news/local/coronavirus-saliva-screening-program-expands-at-suburban-schools/2374812/)
654 [suburban-schools/2374812/](https://www.nbcchicago.com/news/local/coronavirus-saliva-screening-program-expands-at-suburban-schools/2374812/)
- 655 59. Lee EC, Wada NI, Grabowski MK, Gurley ES, Lessler J. The engines of SARS-CoV-2 spread.
656 Science 2020, 370:406-407. 10.1126/science.abd8755
- 657 60. Ryan S. 5 Big Ten football takeaways after Week 6, including the messy league rules of playing
658 during COVID-19 and who has a shot at the championship. Chicago Tribune, 2020.
659 [https://www.chicagotribune.com/sports/college/ct-cb-big-ten-takeaways-ohio-state-covid-19-](https://www.chicagotribune.com/sports/college/ct-cb-big-ten-takeaways-ohio-state-covid-19-20201130-zjxnilmujhtrop53ytthg7i7i-story.html)
660 [20201130-zjxnilmujhtrop53ytthg7i7i-story.html](https://www.chicagotribune.com/sports/college/ct-cb-big-ten-takeaways-ohio-state-covid-19-20201130-zjxnilmujhtrop53ytthg7i7i-story.html)
- 661 61. Kissler SM, Fauver JR, Mack C, Tai C, Shiue KY, Kalinich CC, Jednak S, Ott IM, Vogels CBF,
662 Wohlgemuth J. Viral dynamics of SARS-CoV-2 infection and the predictive value of repeat testing.
663 medRxiv 2020, <https://doi.org/10.1101/2020.10.21.20217042>

664 62. Buchanan L, Gamio L, Leatherby L, Stein R, Triebert C. Inside the White House Event Now Under
665 Covid-19 Scrutiny. The New York Times, 2020.
666 <https://www.nytimes.com/interactive/2020/10/03/us/rose-garden-event-covid.html>

667

668

669

670

671

672

673

674 **Figure legends**

675

676 **Figure 1: Point-of-care RT-LAMP SARS-CoV-2 testing workflow. Steps 1-5.** Saliva sample
677 preparation. **Steps 6-7.** RT-LAMP reagent preparation. **Steps 8-10.** RT-LAMP reactions and results
678 interpretation. A reaction color change from pink/orange to yellow after 30 minutes in at least 1 of 2
679 sample replicates was scored as positive. Figure was created using BioRender.com.

680

681 **Figure 2: Detection of SARS-CoV-2 in contrived saliva samples by direct RT-LAMP. A.** Initial limit
682 of detection (LOD) assessment with contrived saliva samples from 3 volunteers (S1, S2, S3). RT-LAMP
683 reactions determined to be negative are pink and those determined to be positive are yellow.
684 Quantitative RT-PCR vRNA loads are presented as copies/ μ l above the replicates for each sample. **B.**
685 Bar graph showing an expanded assessment of RT-LAMP LOD for 22 additional contrived saliva
686 samples (S4-S25). Gamma-irradiated SARS-CoV-2 (irSARS-CoV-2) vRNA load is shown as copies/ μ l
687 on the x-axis, number of samples positive in 2 (black), 1 (dark gray), or 0 (light gray) replicates is shown
688 on the y-axis.

689

690 **Figure 3: Detection of SARS-CoV-2 in 38 clinical saliva specimens by direct RT-LAMP.** The vRNA
691 load of each clinical sample is plotted on the x-axis relative to the in-house CDC N1 qRT-PCR assay
692 cycle threshold (Ct) on the y-axis. Black, dark gray, and light gray indicate 2, 1, and 0 positive replicates
693 respectively.

694

695

696

697

698

699

700

701

702 Table 1. RT-LAMP N-gene primers

Primer	Sequence 5'->3'	Concentration
Outer forward primer (F3)	AACACAAGCTTTCGGCAG	0.2uM
Outer backward primer (B3)	GAAATTTGGATCTTTGTCATCC	0.2uM
Forward inner primer (FIP)	TGCGGCCAATGTTTGTAAATCAGCCAAGGAAATTTGGGGAC	1.6uM
Backward inner primer (BIP)	CGCATTGGCATGGAAGTCACTTTGATGGCACCTGTGTAG	1.6uM
Loop forward primer (LF)	TTCCTTGTCTGATTAGTTC	0.8uM
Loop backward primer (LB)	ACCTTCGGGAACGTGGTT	0.8uM

Table 2. RT-LAMP evaluation of SARS-CoV-2 positive clinical saliva samples.

Sample	Ct (N1 assay)	Positive by RT-LAMP	vRNA load (copies/μl)	Sample	Ct (N1 assay)	Positive by RT-LAMP	vRNA load (copies/μl)
UWHC1	27.65	0/2	3.25x10 ²	UWHC20	25.80	2/2	9.48x10 ²
UWHC2	32.7	0/2	10.9	UWHC21	20.18	2/2	4.40x10 ⁴
UWHC3	20.98	2/2	5.17x10 ⁴	UWHC22	28.92	0/2	1.13x10 ²
UWHC4	24.07	2/2	3.57x10 ³	UWHC23	21.26	2/2	2.10x10 ⁴
UWHC5	26.53	2/2	6.81x10 ²	UWHC24	29.92	0/2	57.2
UWHC6	30.85	1/2	37.4	UWHC25	36.71	0/2	0.796*
UWHC7	36.96	0/2	0.701	UWHC26	25.96	2/2	1.31x10 ²
UWHC8	26.28	1/2	8.10x10 ²	UWHC27	29.99	0/2	54.1
UWHC9	37.59	0/2	0.402	UWHC28	24.34	2/2	2.58x10 ³
UWHC10	24.01	2/2	3.72x10 ³	UWHC29	20.55	2/2	4.72x10 ⁴
UWHC11	22.39	2/2	1.10x10 ⁴	UWHC30	33.18	0/2	7.89
UWHC12	35.46	0/2	1.75	UWHC31	22.87	2/2	9.57x10 ³
UWHC13	36.09	0/2	1.14	UWHC32	23.07	2/2	8.33x10 ³
UWHC14	23.11	2/2	5.96x10 ³	UWHC33	26.85	2/2	6.20x10 ²
UWHC15	23.38	2/2	4.95x10 ³	UWHC34	20.33	0/2	5.49x10 ⁴
UWHC16	33.86	0/2	3.99	UWHC35	23	2/2	8.88x10 ³
UWHC17	n/a	0/2	0	UWHC36	32.26	0/2	14.9*
UWHC18	23.02	2/2	6.34x10 ³	UWHC37	33.94	0/2	4.33
UWHC19	37.31	0/2	0.612	UWHC38	25.96	2/2	1.74x10 ³

*Sample only positive in one qRT-PCR replicate.

Table 3. RT-LAMP results for 10- and 100-fold dilutions of 13 SARS-CoV-2-positive samples from UWHC.

Sample	1:10 dilution result	1:100 dilution result	Undiluted vRNA load (copies/ μ l)
UWHC1	1/2	0/2	3.25×10^2
UWHC2	0/2	0/2	10.9
UWHC3	2/2	2/2	5.17×10^4
UWHC4	2/2	2/2	3.57×10^3
UWHC5	1/2	0/2	6.81×10^2
UWHC6	0/2	0/2	37.4
UWHC7	0/2	0/2	0.701
UWHC8	1/2	0/2	8.10×10^2
UWHC9	0/2	0/2	0.402
UWHC10	2/2	0/2	3.72×10^3
UWHC11	2/2	1/2	1.10×10^4
UWHC12	0/2	0/2	1.75
UWHC13	0/2	0/2	1.14

Table 4. Samples identified as potentially positive for SARS-CoV-2 by RT-LAMP during point-of-need testing.

RT-LAMP-positive sample	qRT-PCR viral load copies/ μ l
POC1	8.53
POC2	2.15×10^4
POC3	neg
POC4	neg
POC5	neg
POC6	neg
POC7	3.62×10^5
POC8	neg
POC9	n/a*
POC10	2.12×10^3
POC11	neg
POC12	1.04×10^3
POC13	2.06×10^2
POC14	neg
POC15	52.8
POC16	6.02×10^2
POC17	87.3
POC18	1.17×10^3
POC19	neg
POC20	1.38×10^2
POC21	4.07×10^2

*Volunteer did not consent to follow-up testing.

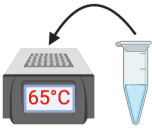
Saliva preparation

1



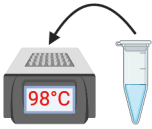
Collect saliva in a 1.5 ml tube using 1000 µl pipette tip

2



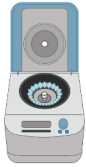
Heat the saliva in heat block at 65°C for 30 minutes

3



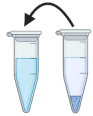
Heat the saliva in heat block at 98°C for 3 minutes

4



Spin down tubes for 2 minutes in a microcentrifuge

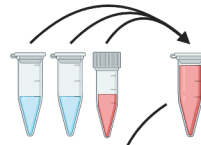
5



Add 50 µl of saliva into 1.5ml tube with 50 µl PBS

RT-LAMP reagent preparation

6



Combine 10x primer stock, dH2O, and 2x WarmStart master mix

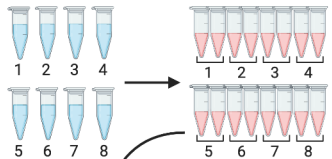
7



Aliquot 17 µl of the mix into PCR strip tubes

RT-LAMP reaction

8



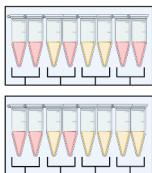
Add 3 µl of diluted saliva into 17 µl of RT-LAMP mix in duplicate

9



Mix, spin down, and incubate in heat block at 65°C for 30 minutes

10



Read results:
pink = negative (-)
yellow = positive (+)

Results interpretation



negative (pink/pink)

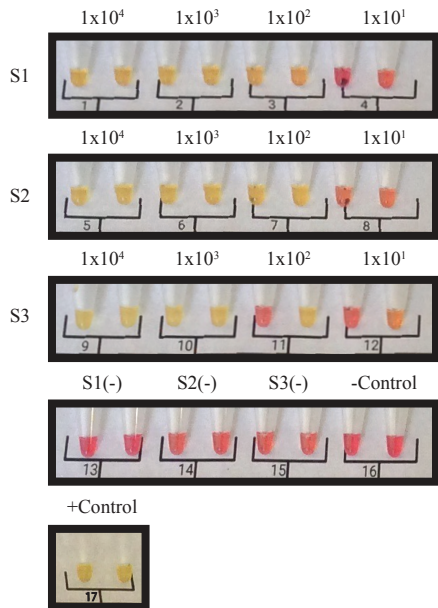


positive (yellow/yellow)



positive (yellow/pink)

** all controls must be correct, otherwise test is invalid*

A**B**