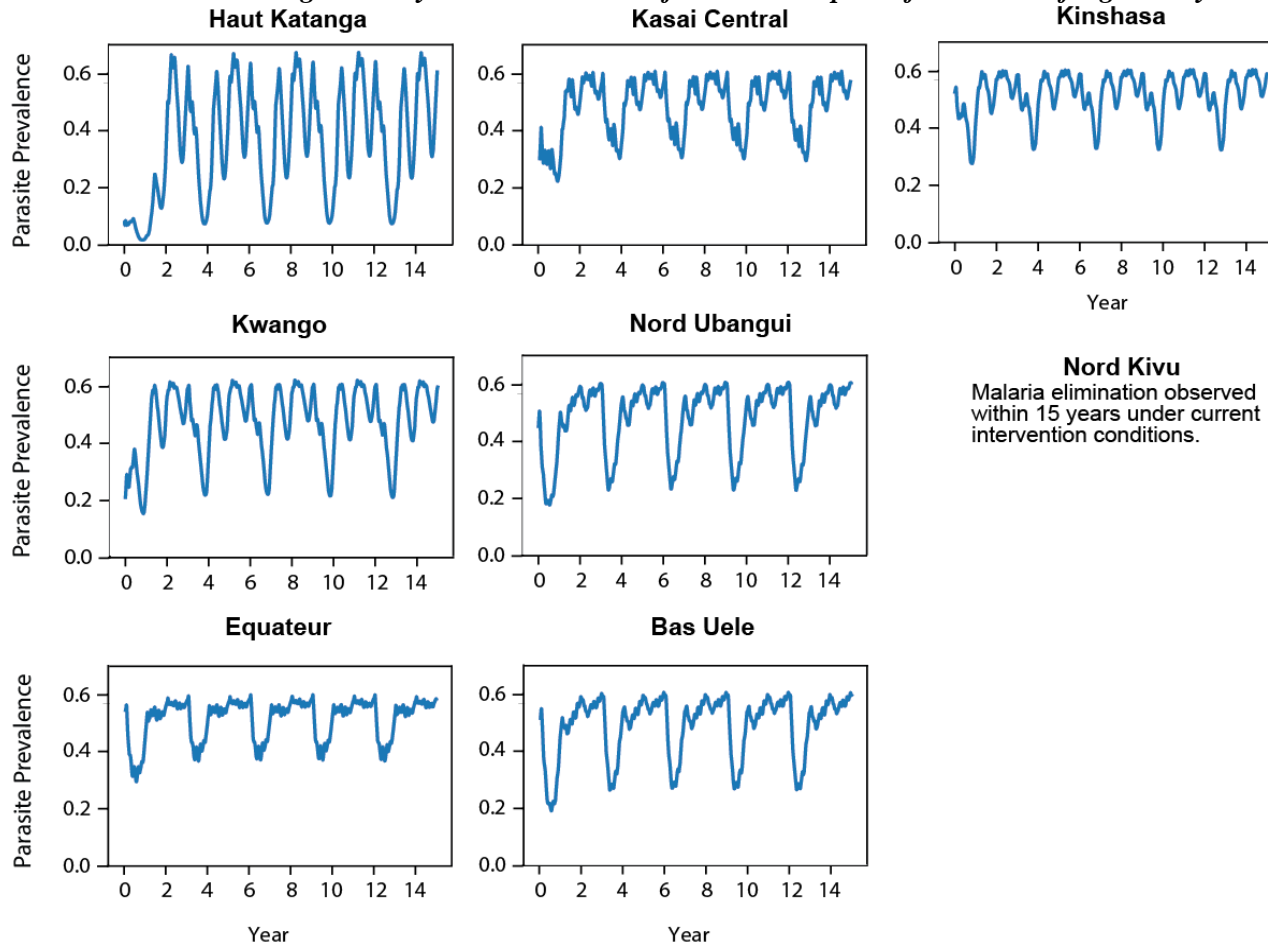


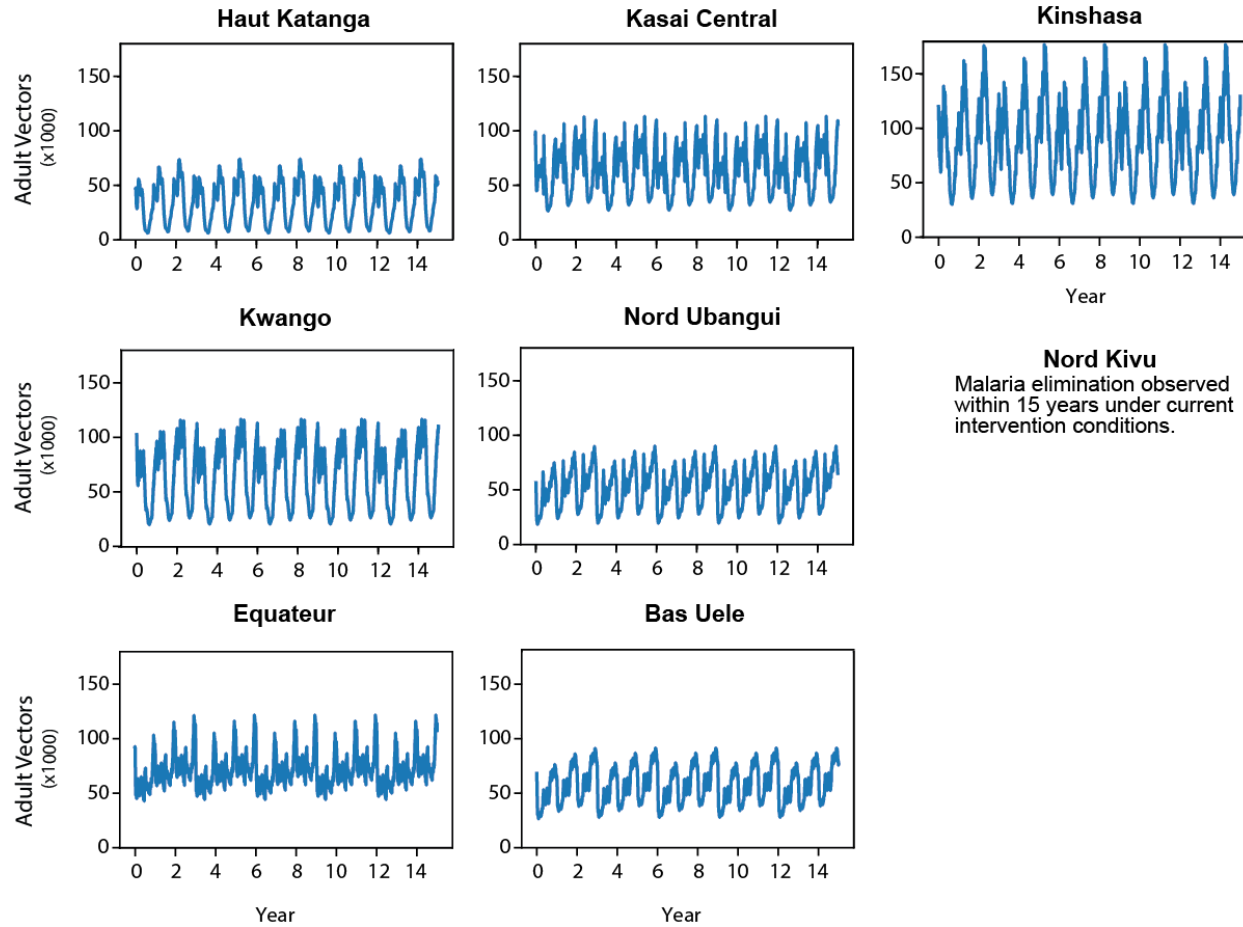
- 1 **Supplementary: Modeling impact and cost-effectiveness of gene drives for malaria elimination in the Democratic Republic of the Congo**
- 2 **Congo**
- 3 **Supplementary 1, Non-spatial simulation framework: number and frequency of driving-Y gene-drive mosquitoes released.**

4 **Baseline observed throughout 15-year simulation timeframe in the spatial framework of eight study locations:**



5

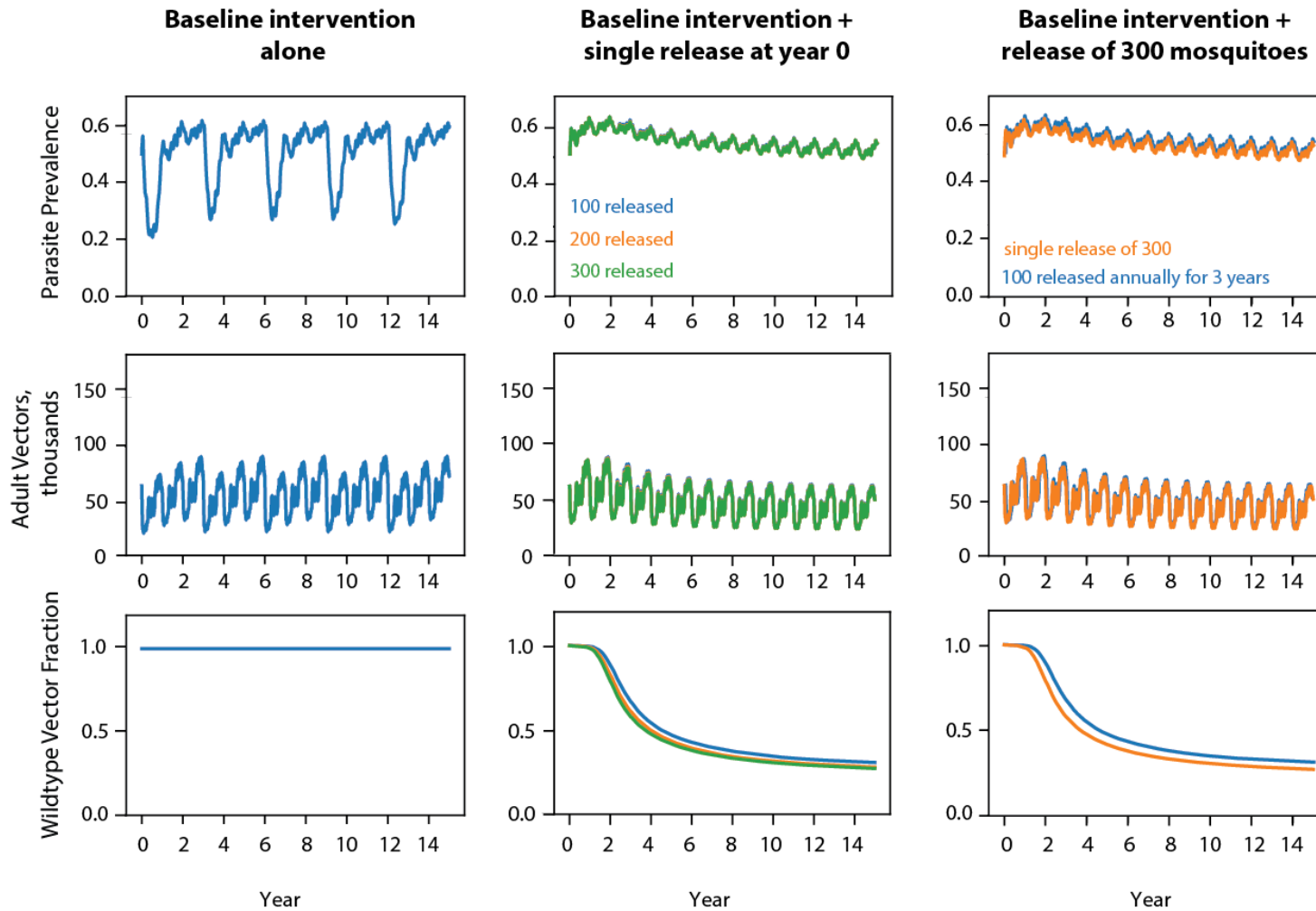
Supplementary: Modeling impact and cost-effectiveness of gene drives for malaria elimination in the Democratic Republic of the Congo



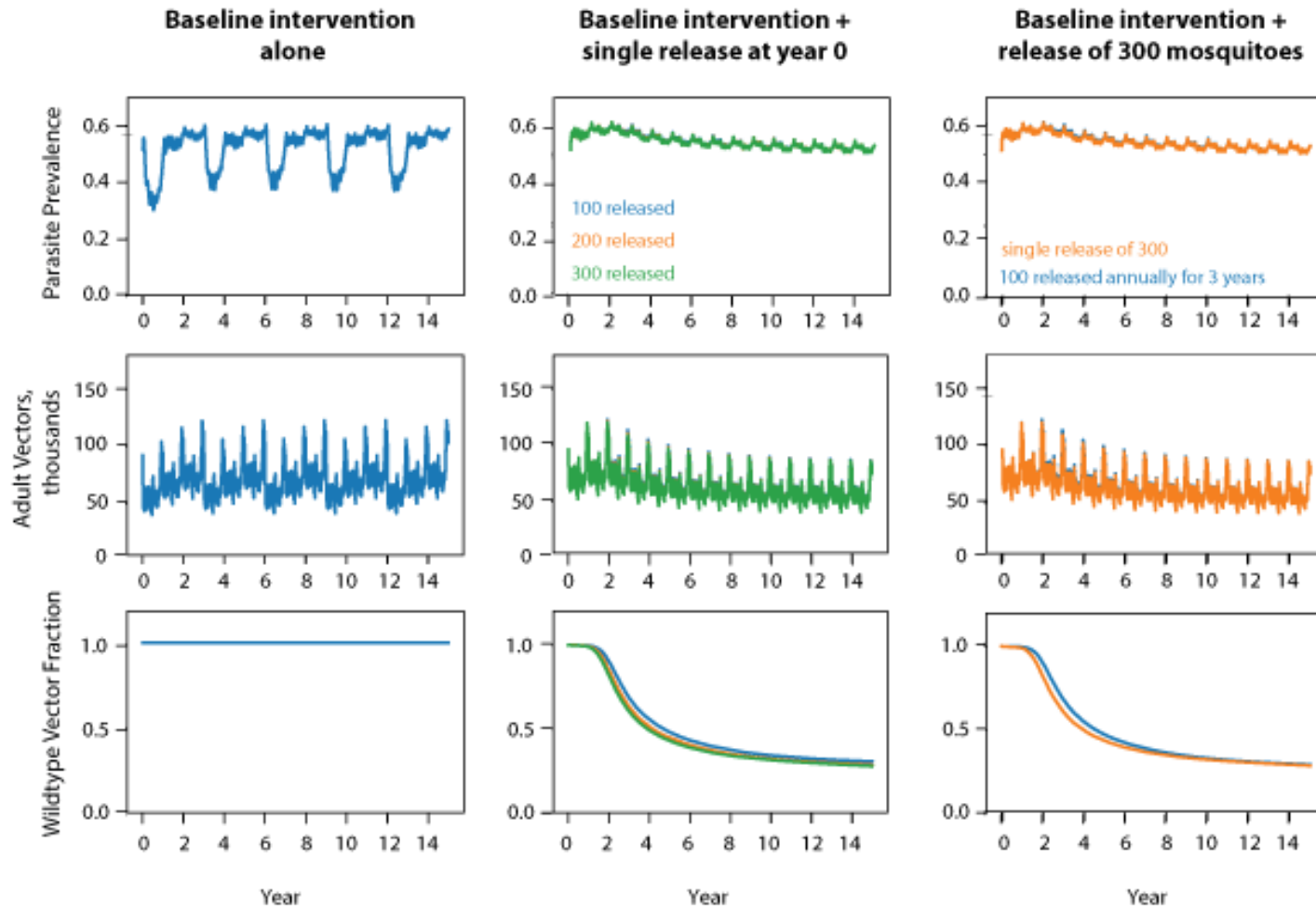
6

7 Simulation outputs by site:

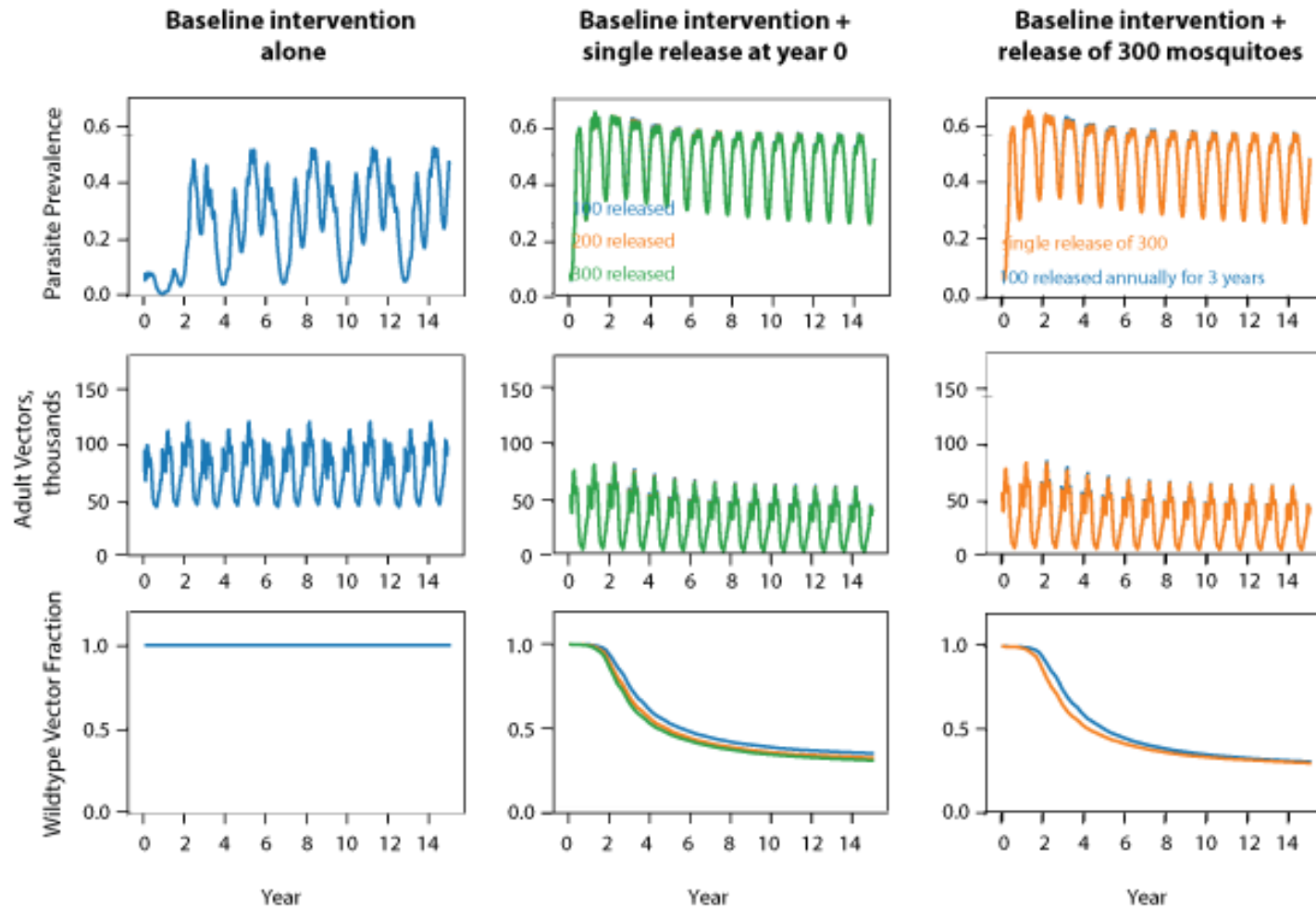
Bas Uele



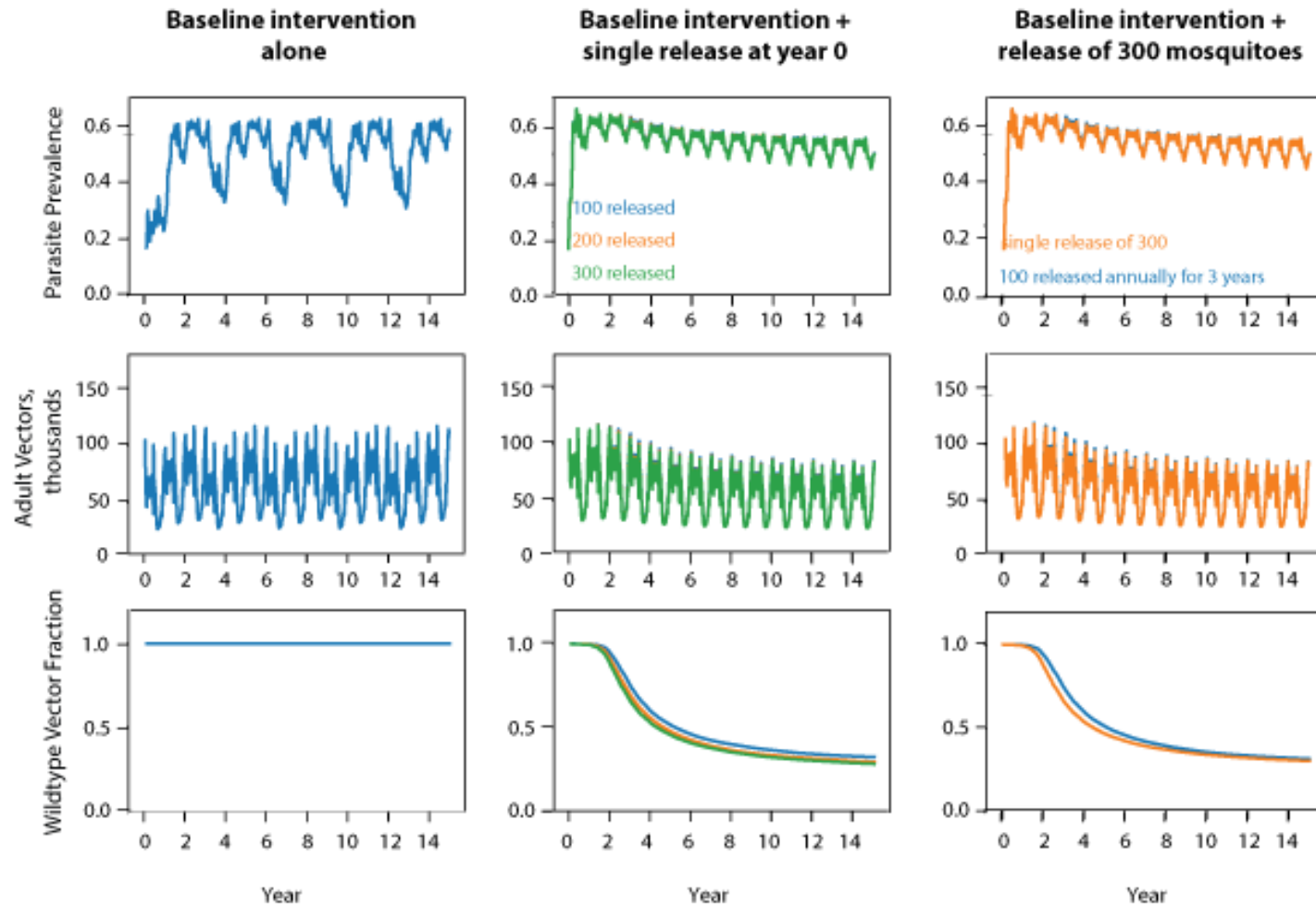
Equateur



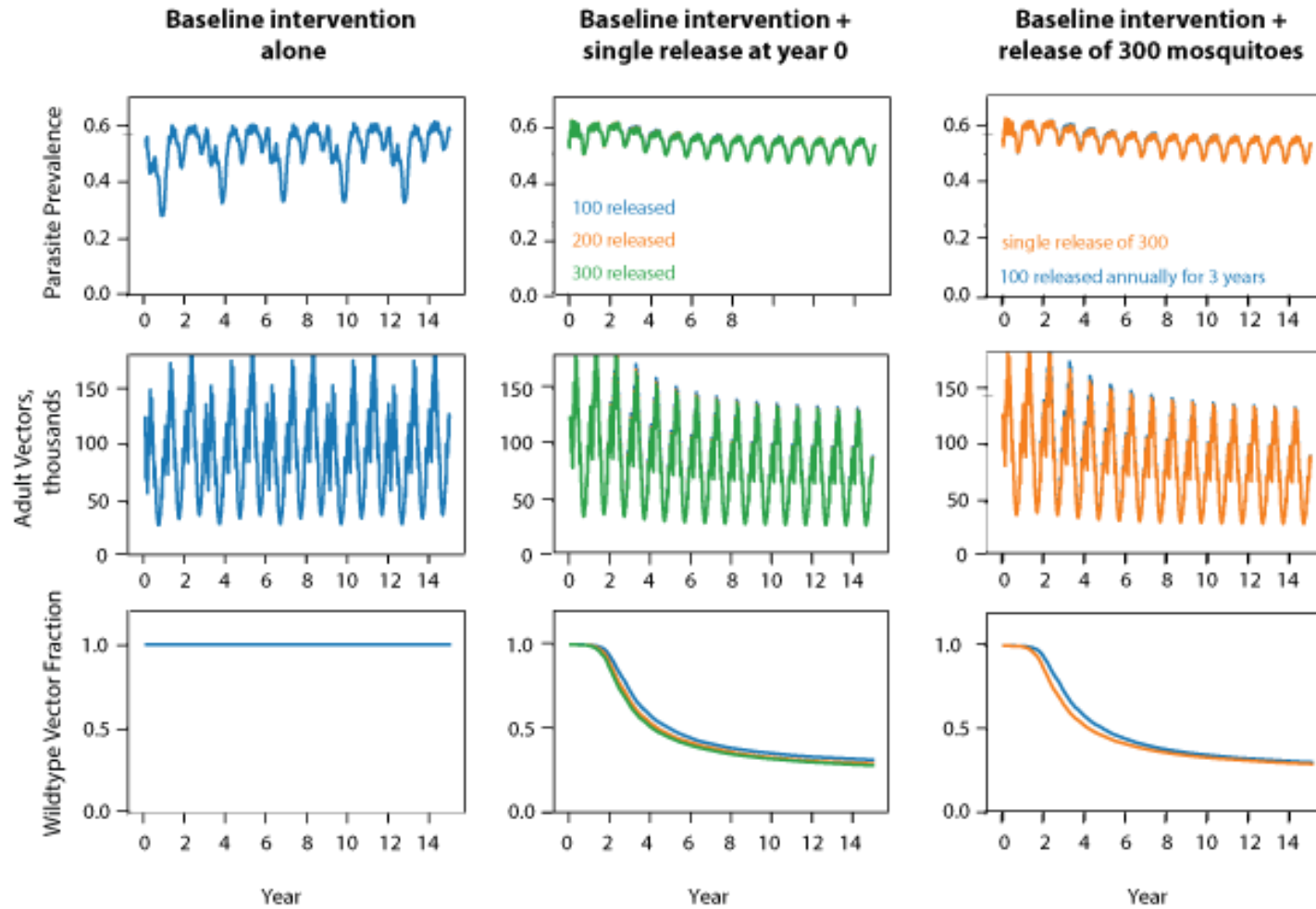
Haut Katanga



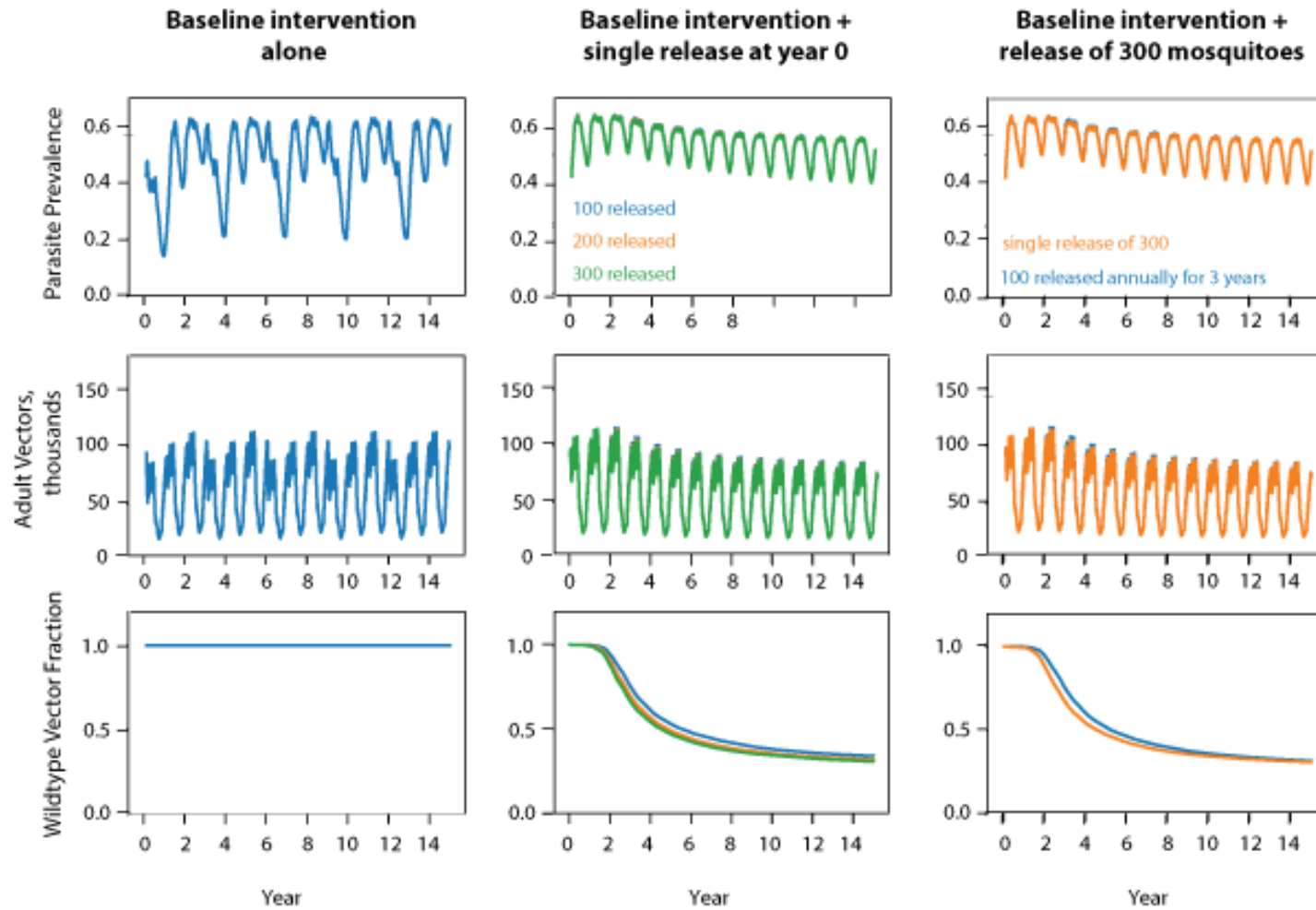
Kasai Central



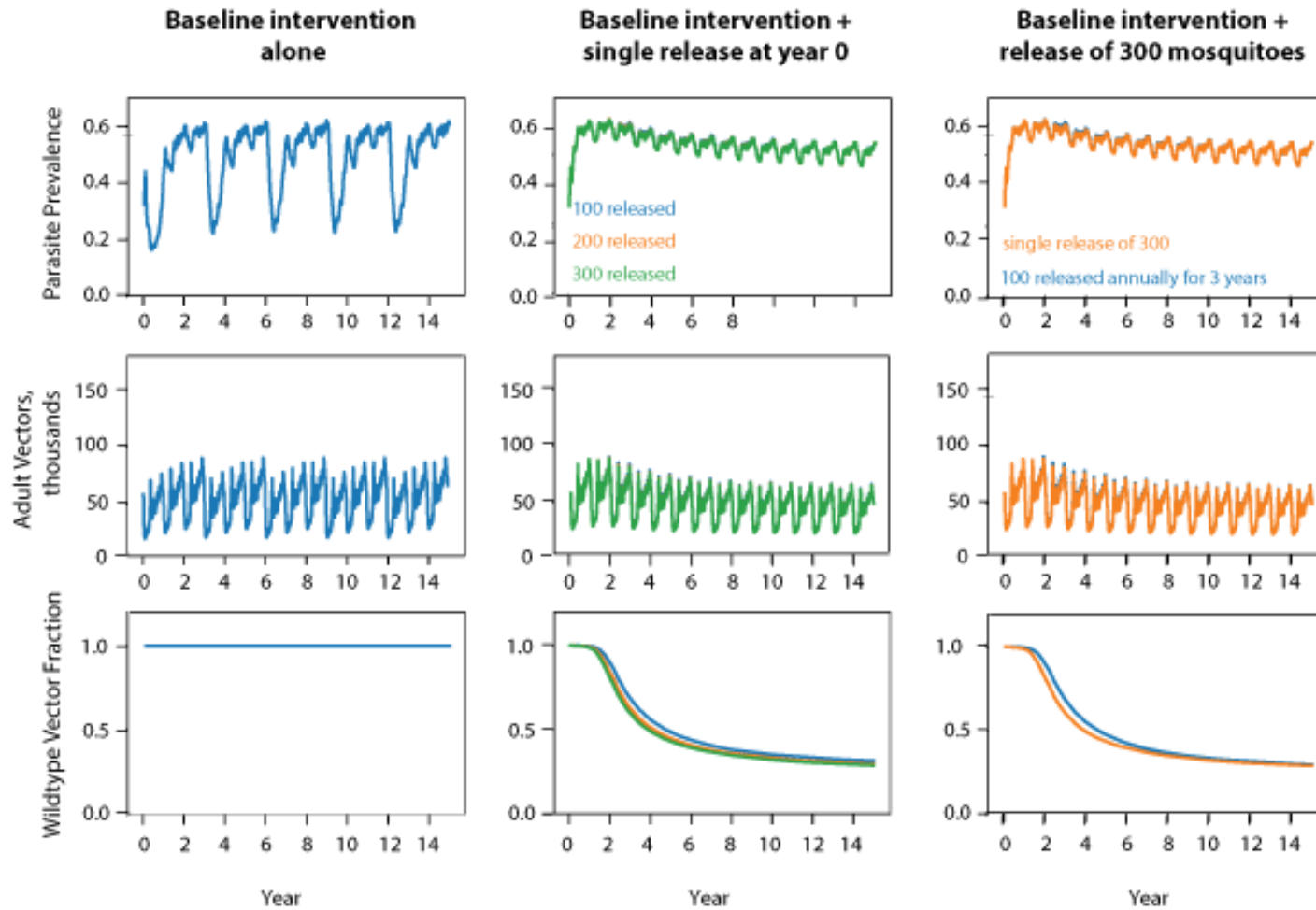
Kinshasa



Kwango

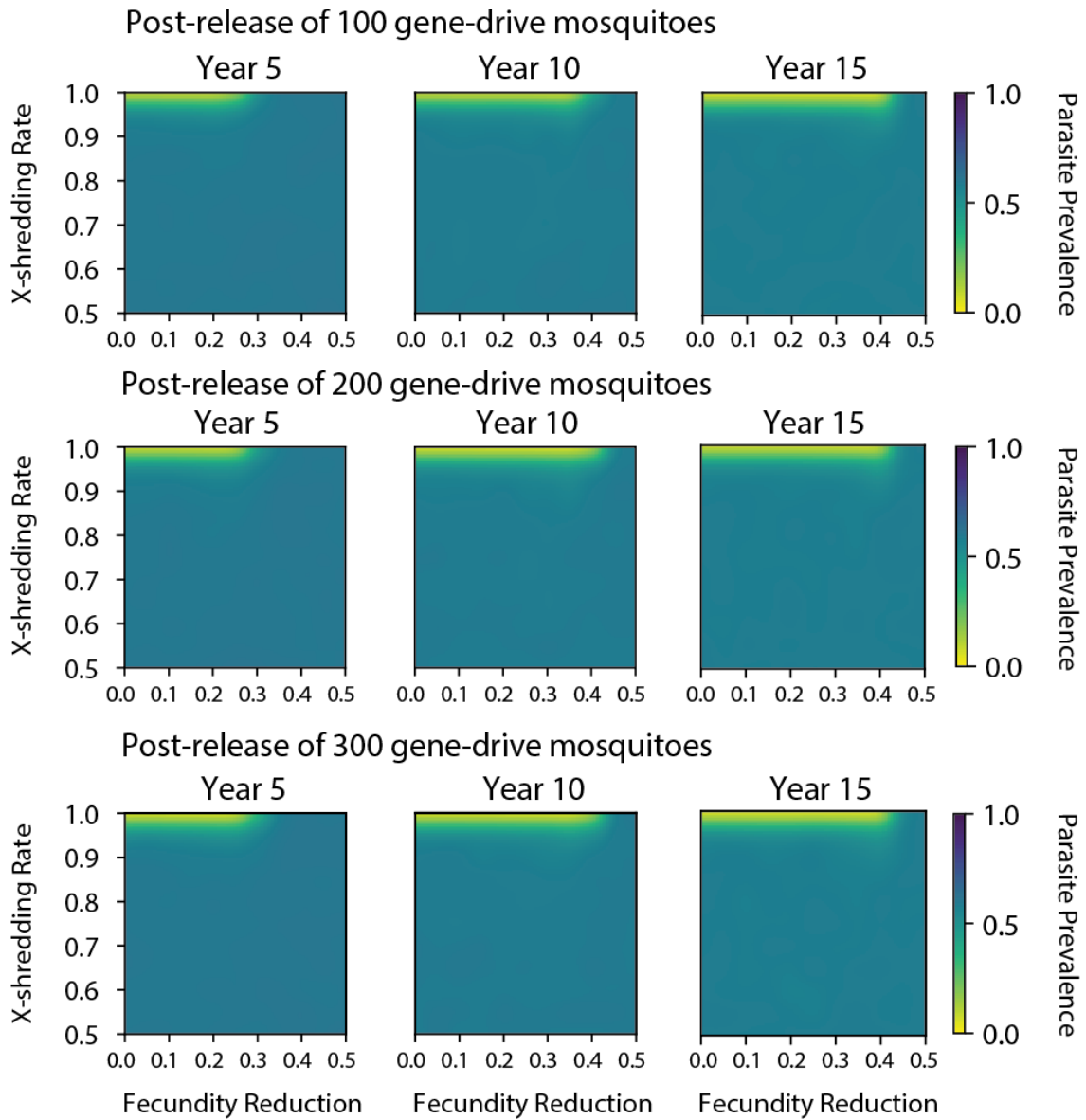


Nord Ubangui



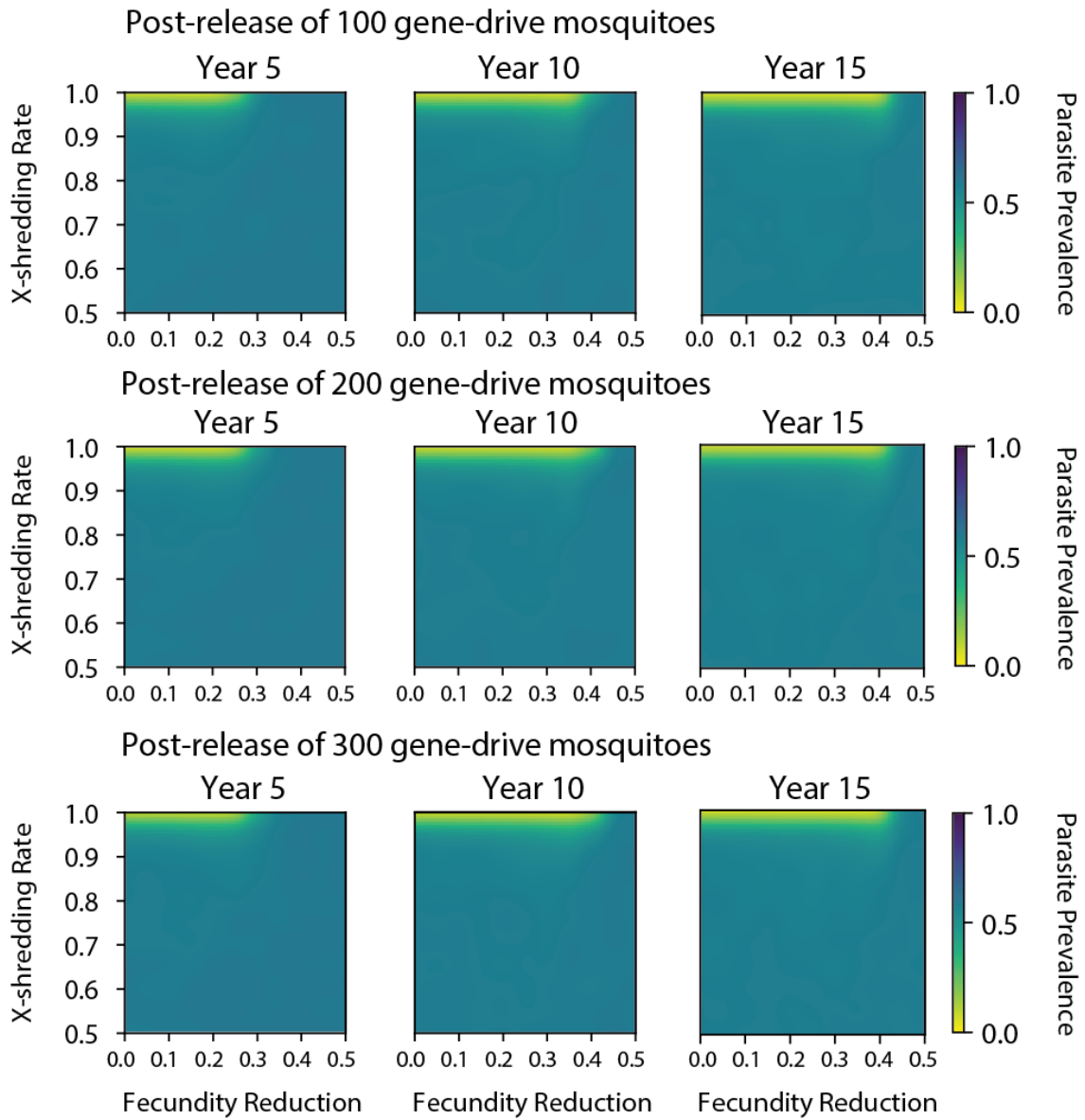
14 **Supplementary 2, Non-spatial simulation framework: driving-Y parameters of gene-drive**
15 **mosquitoes single release at year 0.**

Basuele

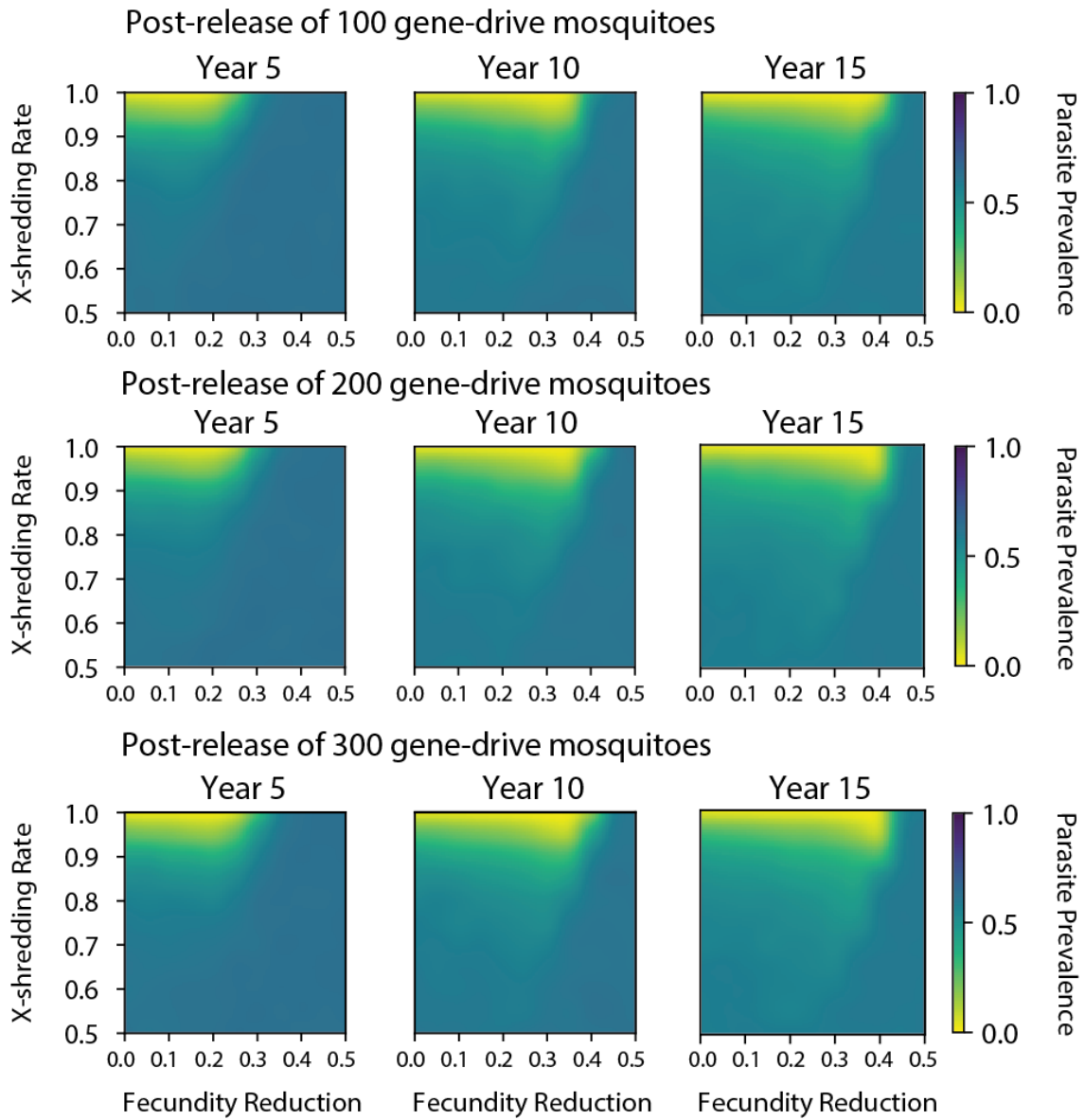


16

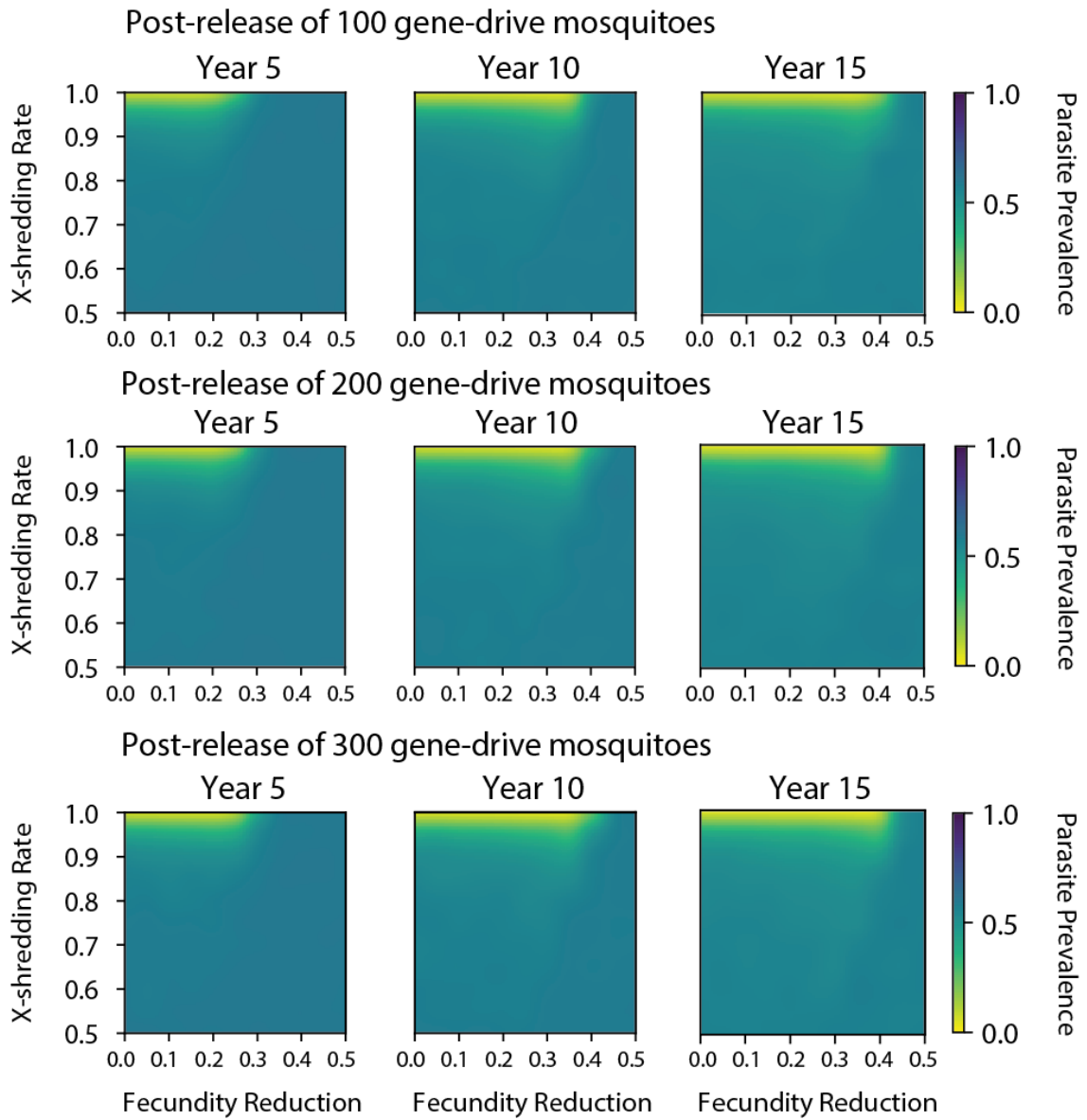
Equateur



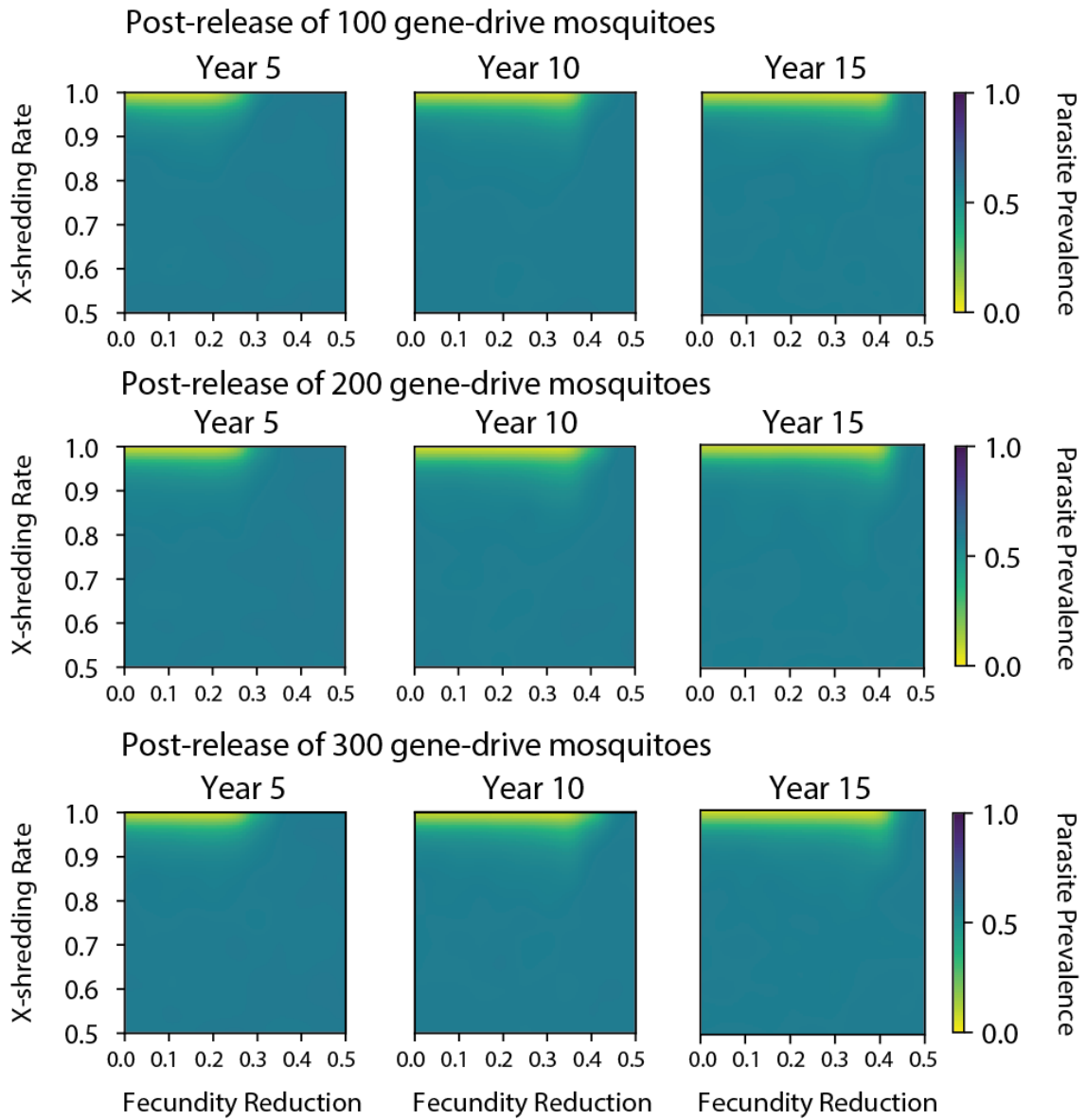
Haut Katanga



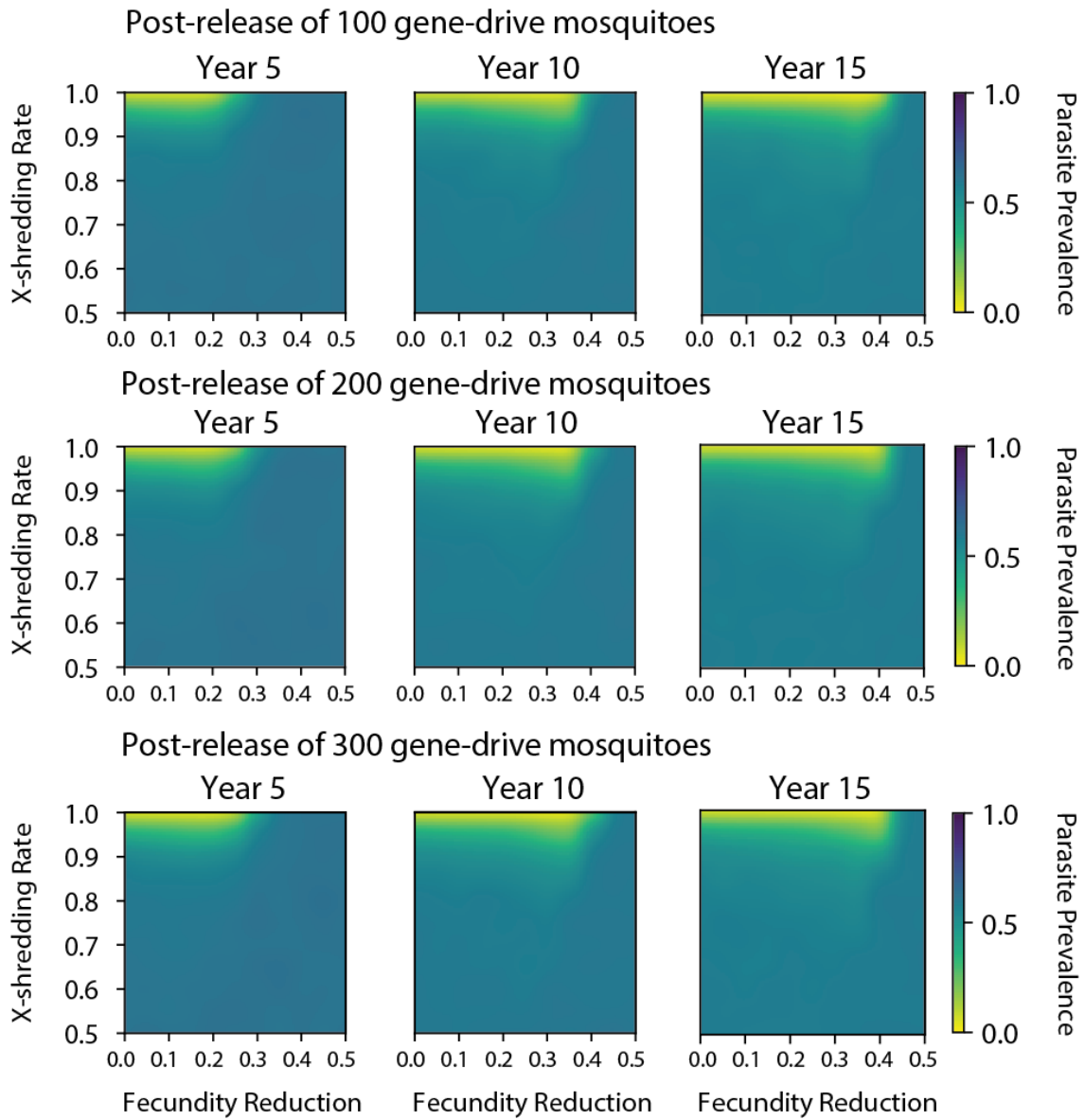
Kasai Central



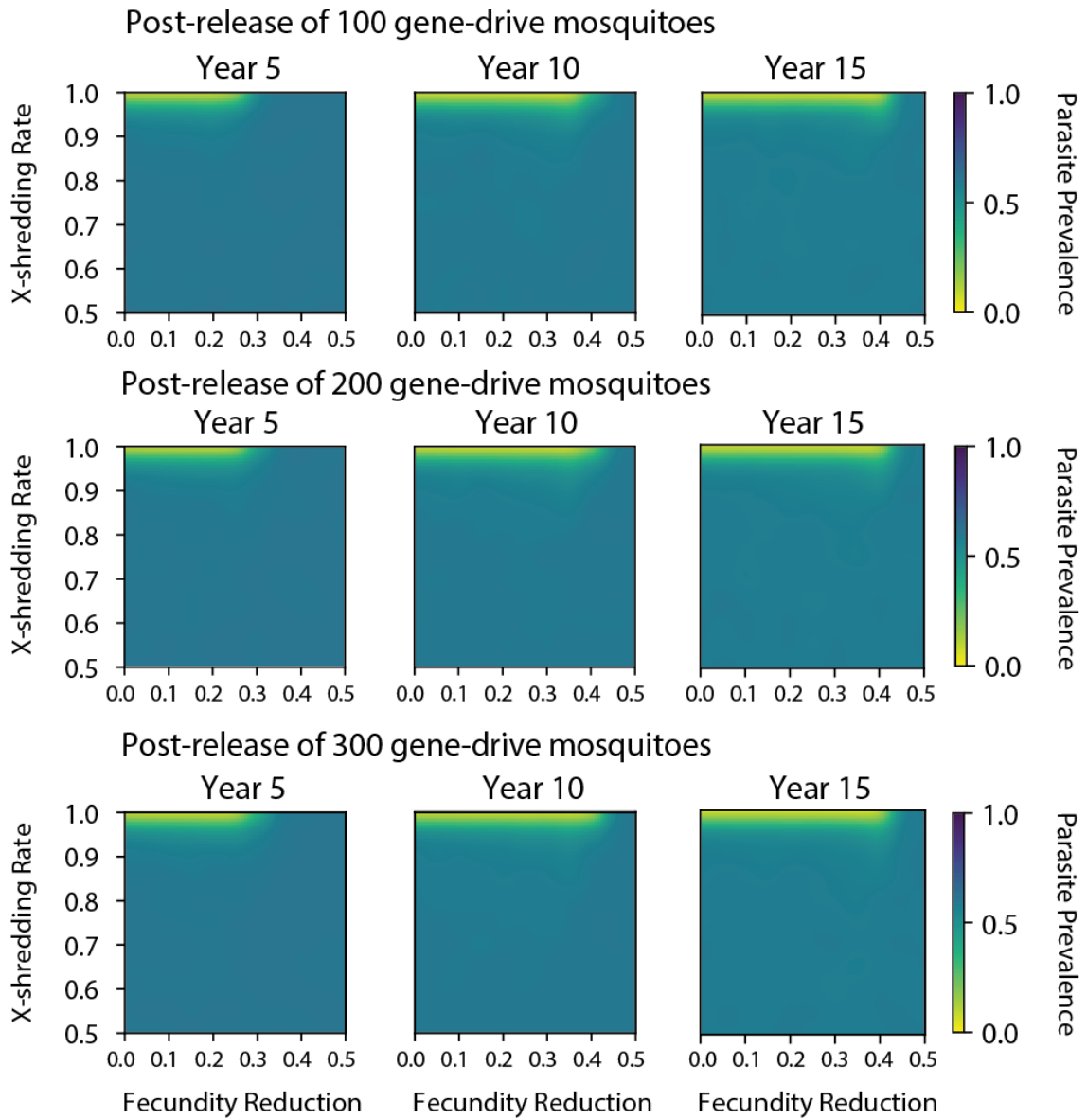
Kinshasa



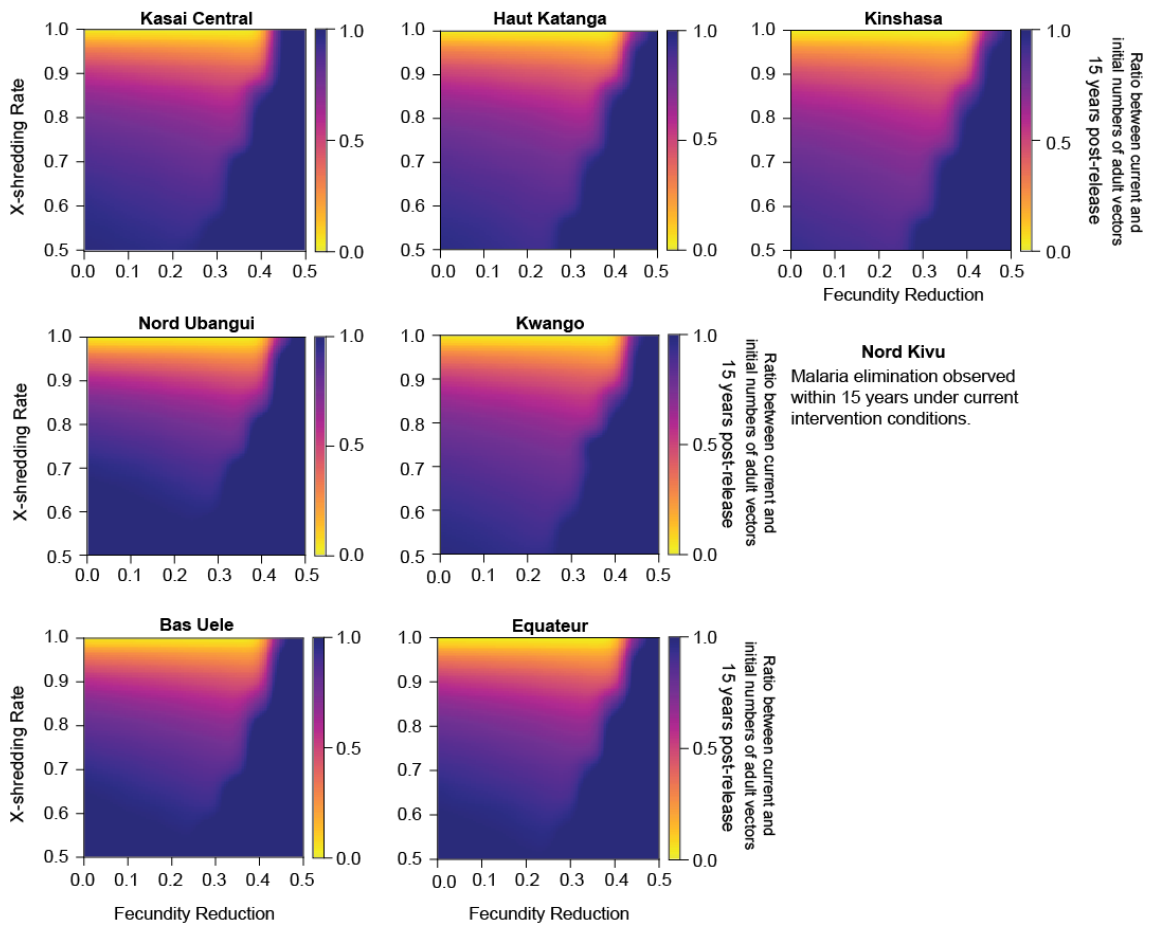
Kwango



Nord Ubangui



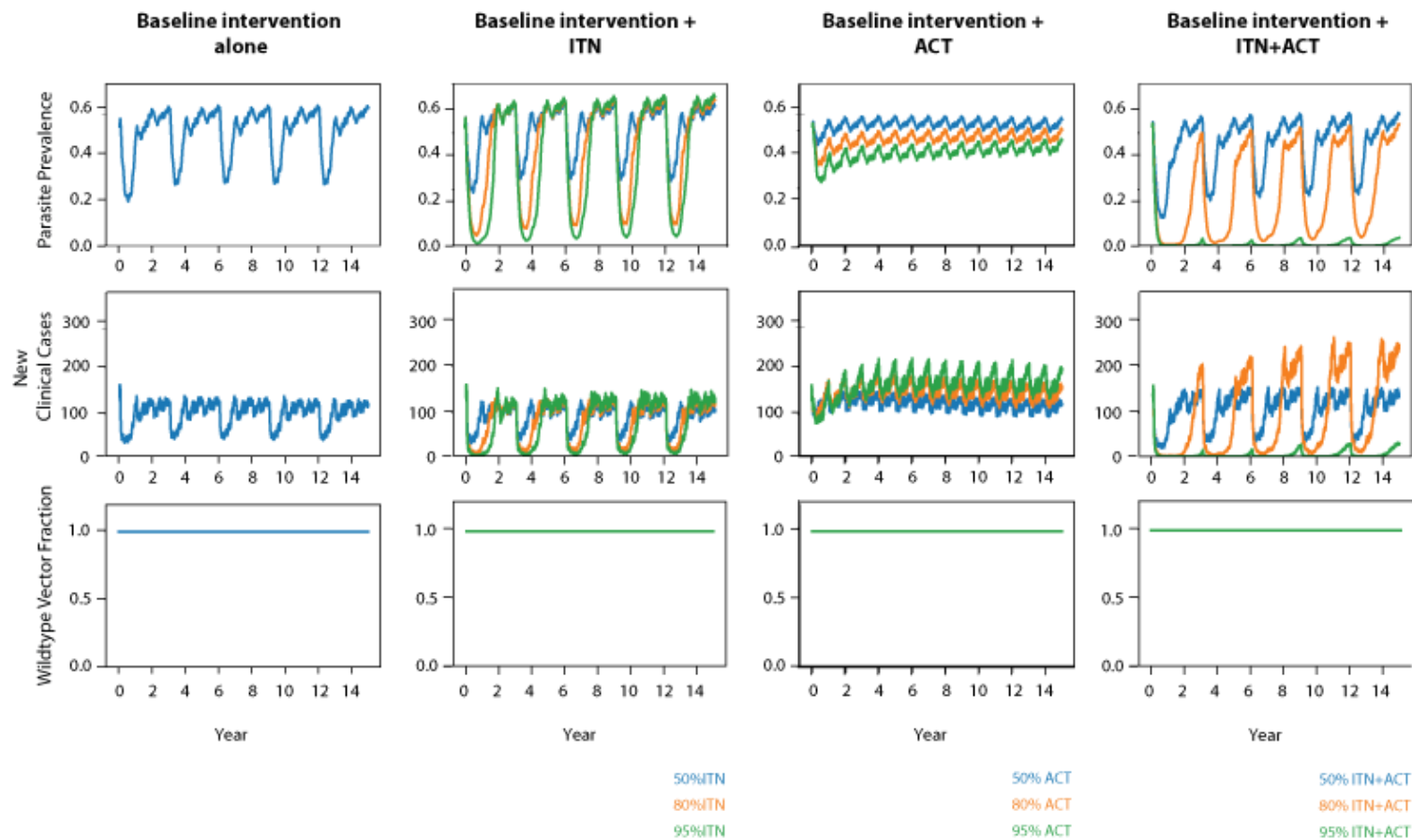
23 **Supplementary 3, Non-spatial simulation framework: ratio between current and initial**
24 **numbers of adult vectors, 15-year post- single release of 300 drive mosquitoes at year 0.**
25



26

27 **Supplementary 4: Spatial simulation framework: simulation outputs.**

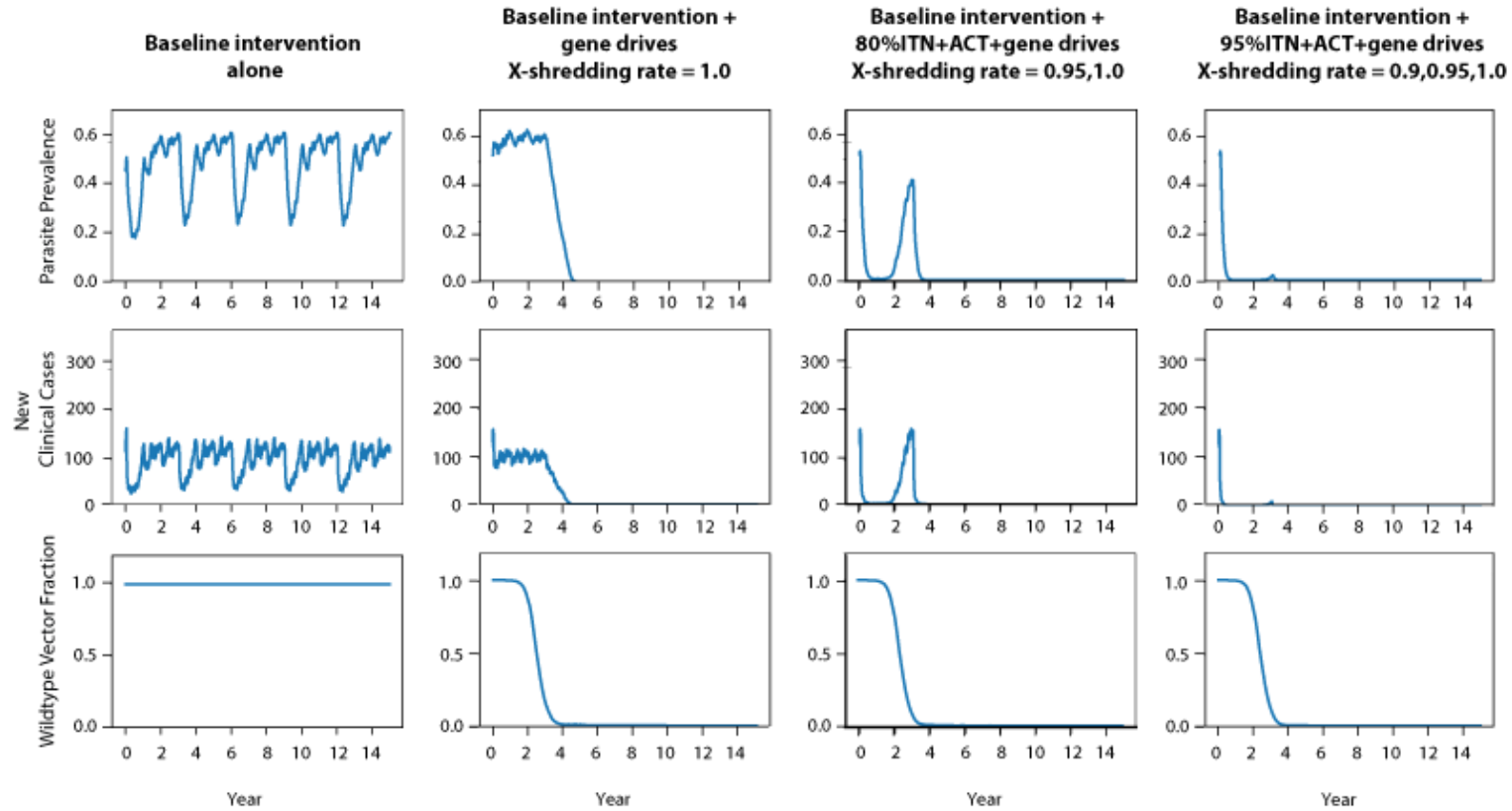
Bas Uele - scenarios without gene drives



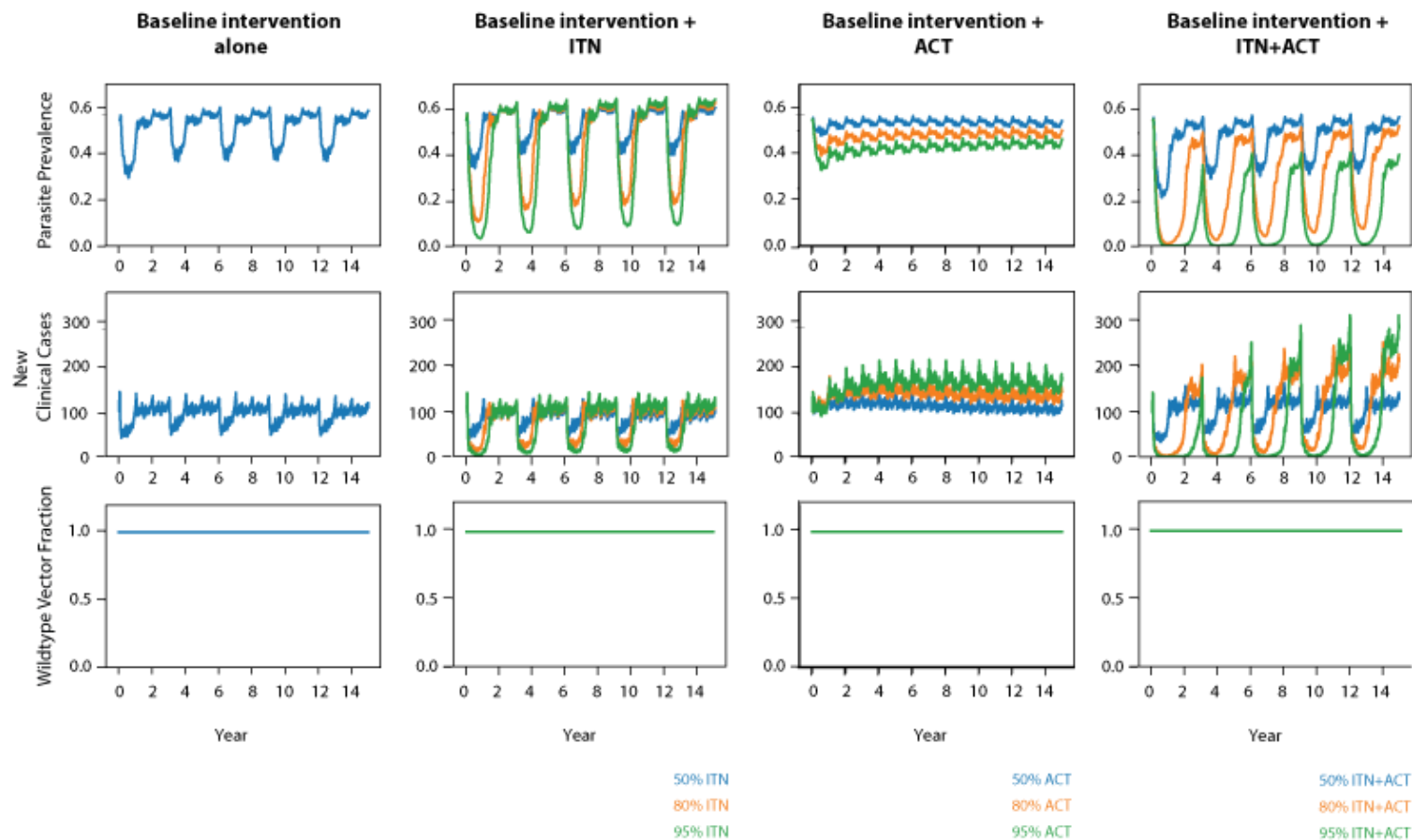
28

Supplementary: Modeling impact and cost-effectiveness of gene drives for malaria elimination in the Democratic Republic of the Congo

Bas Uele - scenarios with 300 gene drives released at year 0

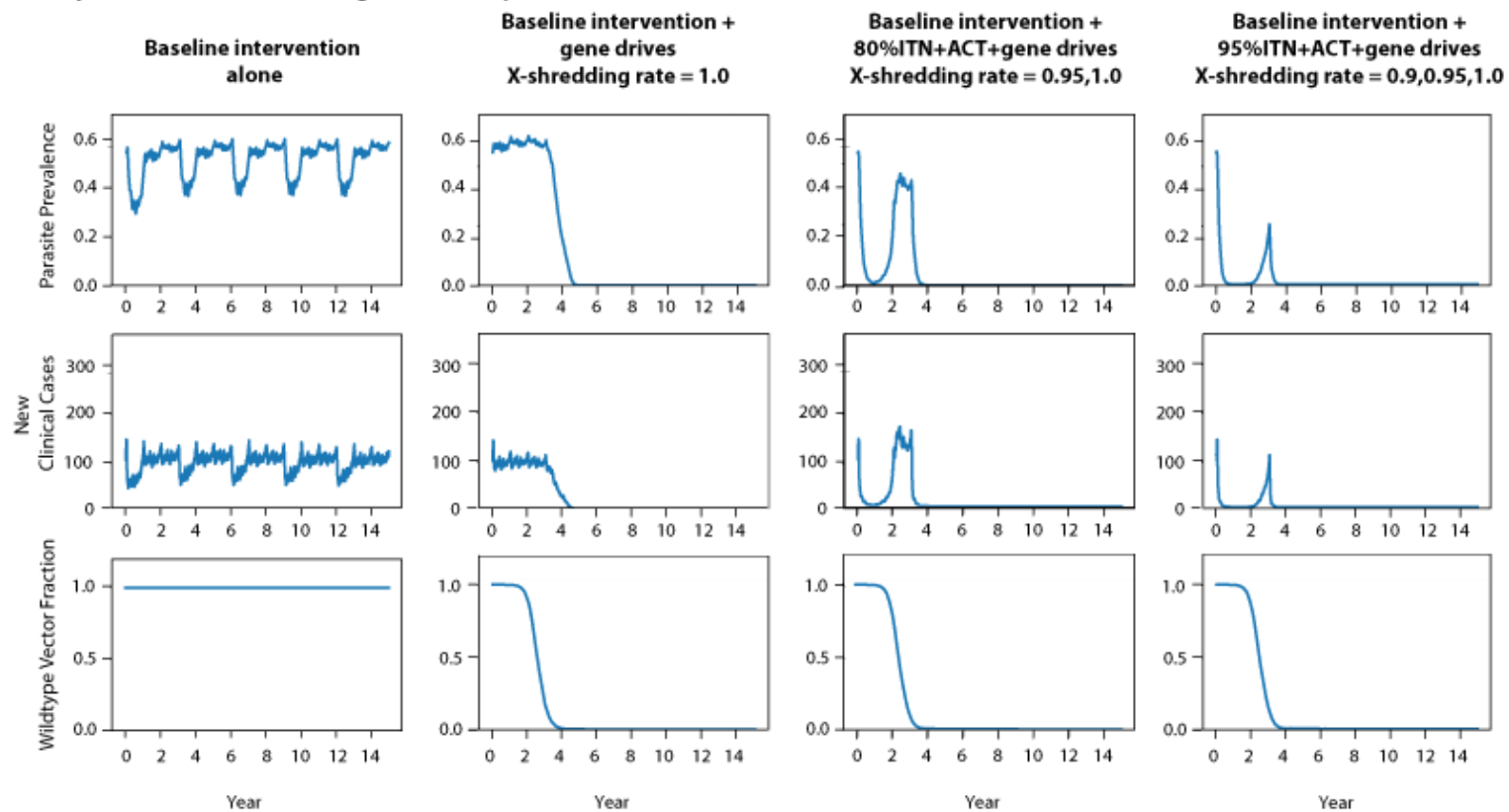


Equateur - scenarios without gene drives

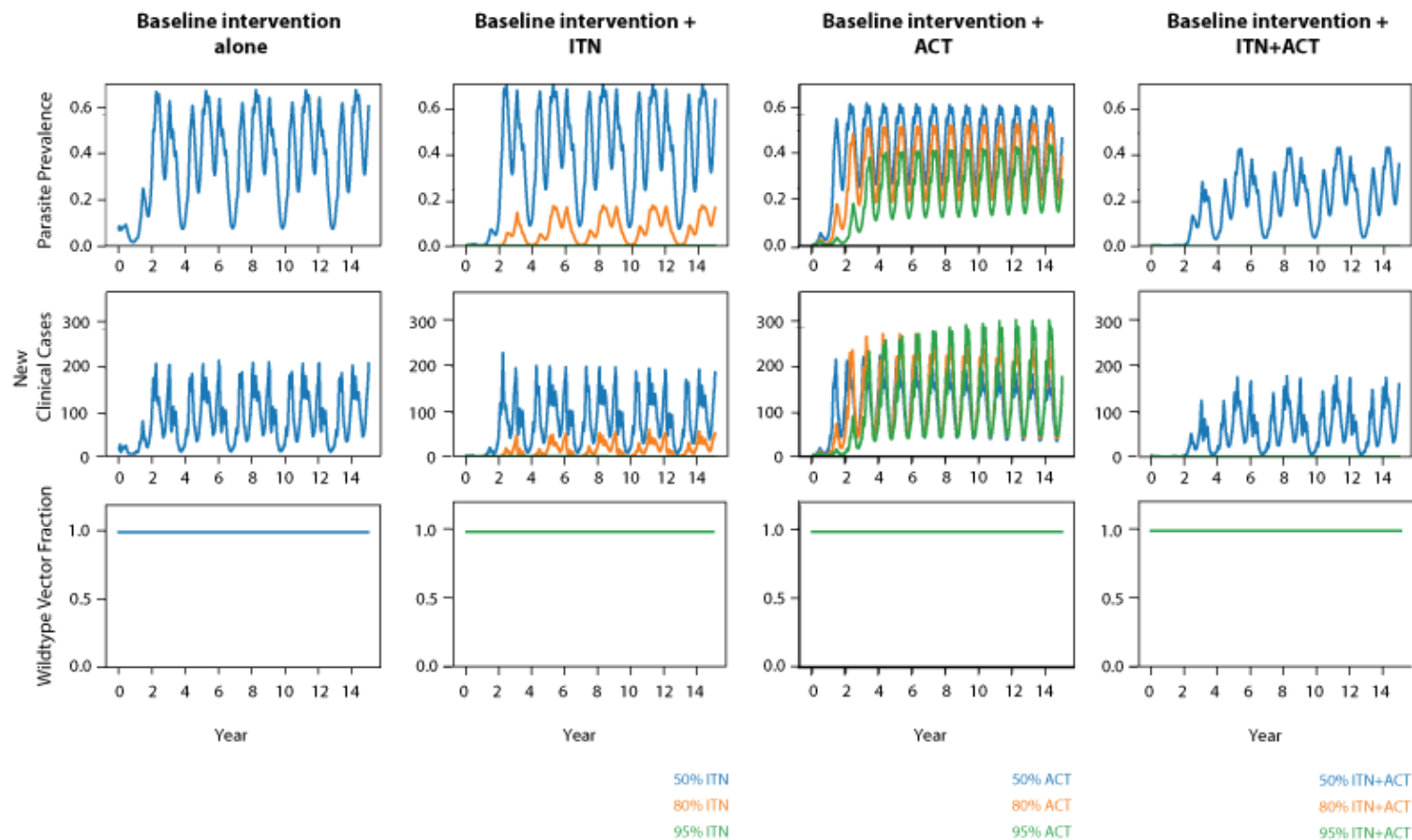


Supplementary: Modeling impact and cost-effectiveness of gene drives for malaria elimination in the Democratic Republic of the Congo

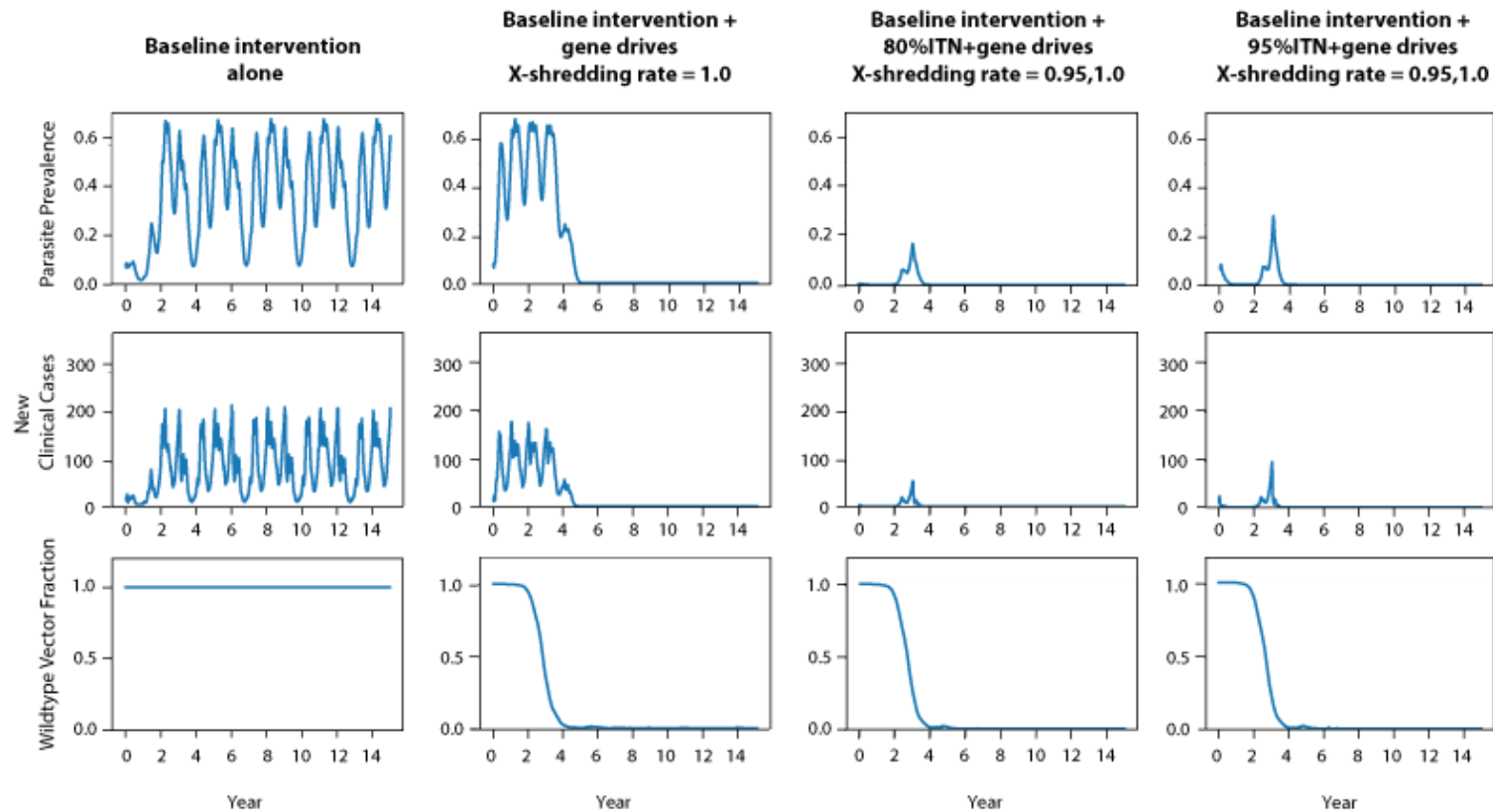
Equateur - scenarios with 300 gene drives at year 0



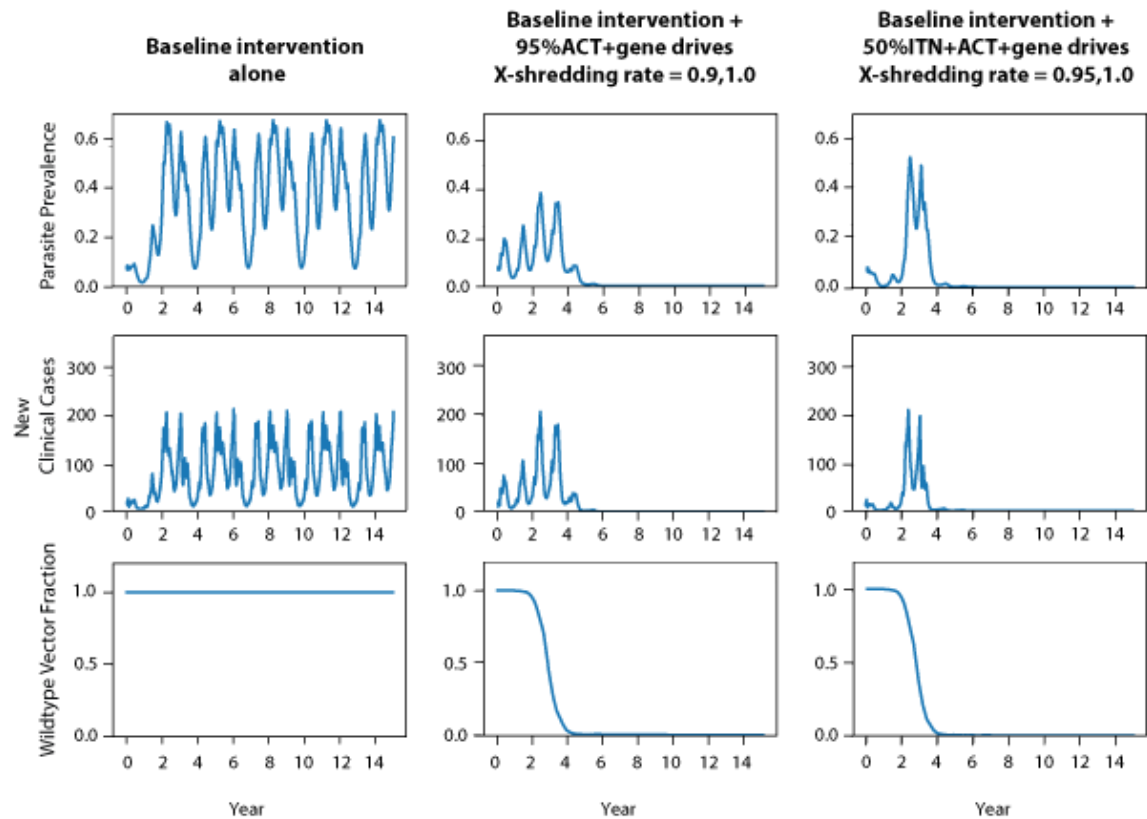
Haut Katanga - scenarios without gene drives



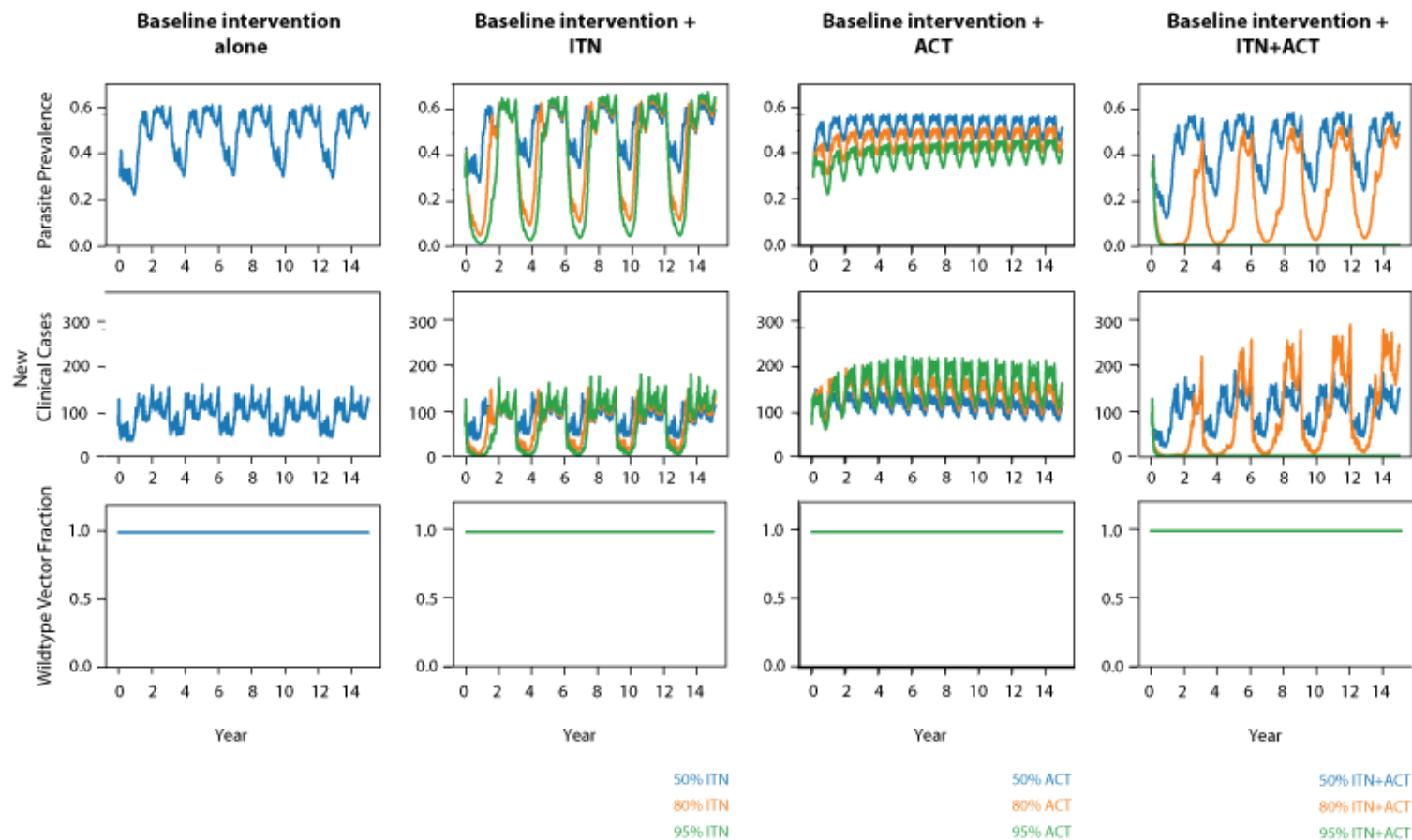
Haut Katanga - scenarios with 300 gene drives released at year 0



Haut Katanga - scenarios with 300 gene drives released at year 0

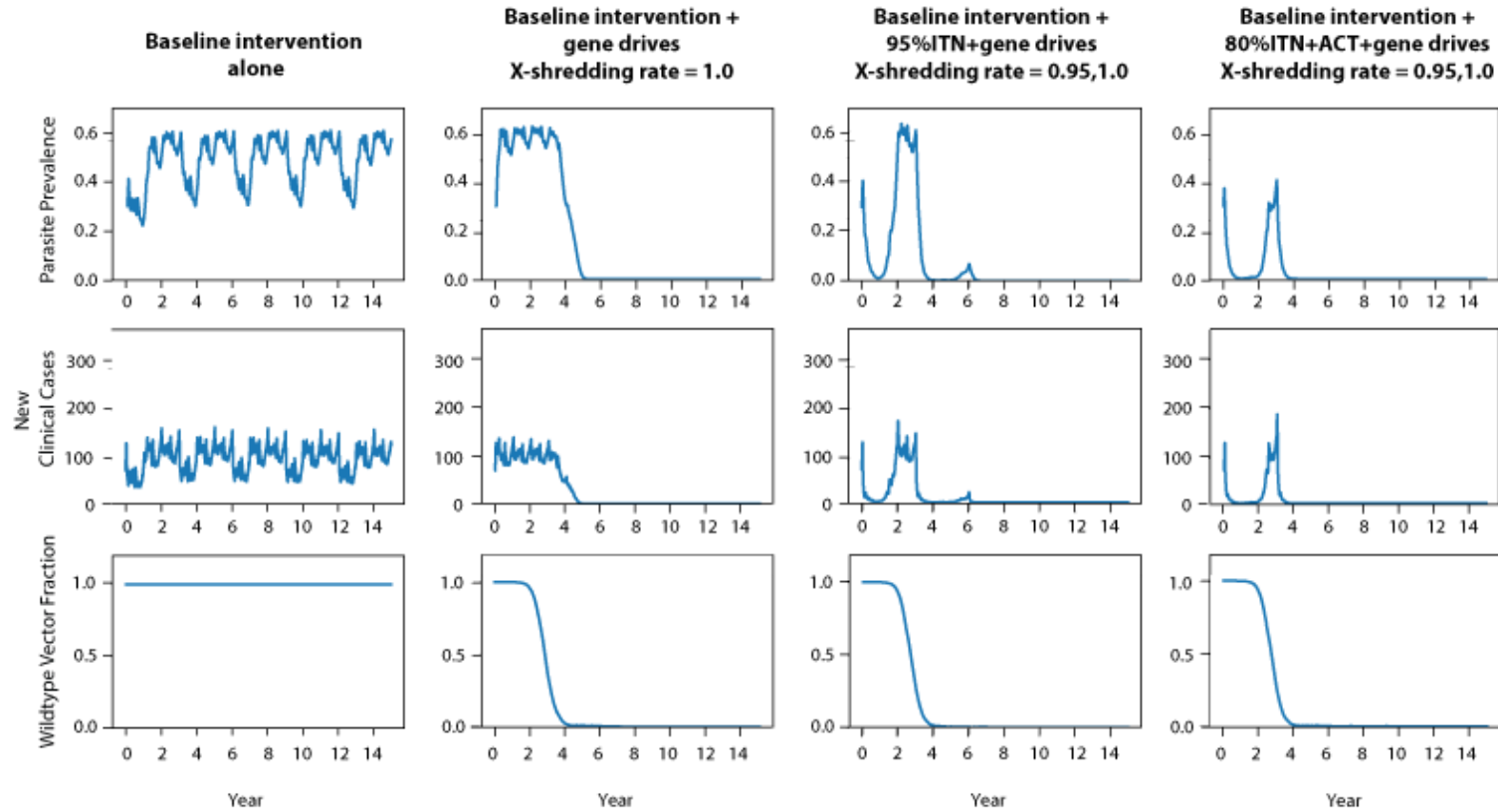


Kasai Central - scenarios without gene drives



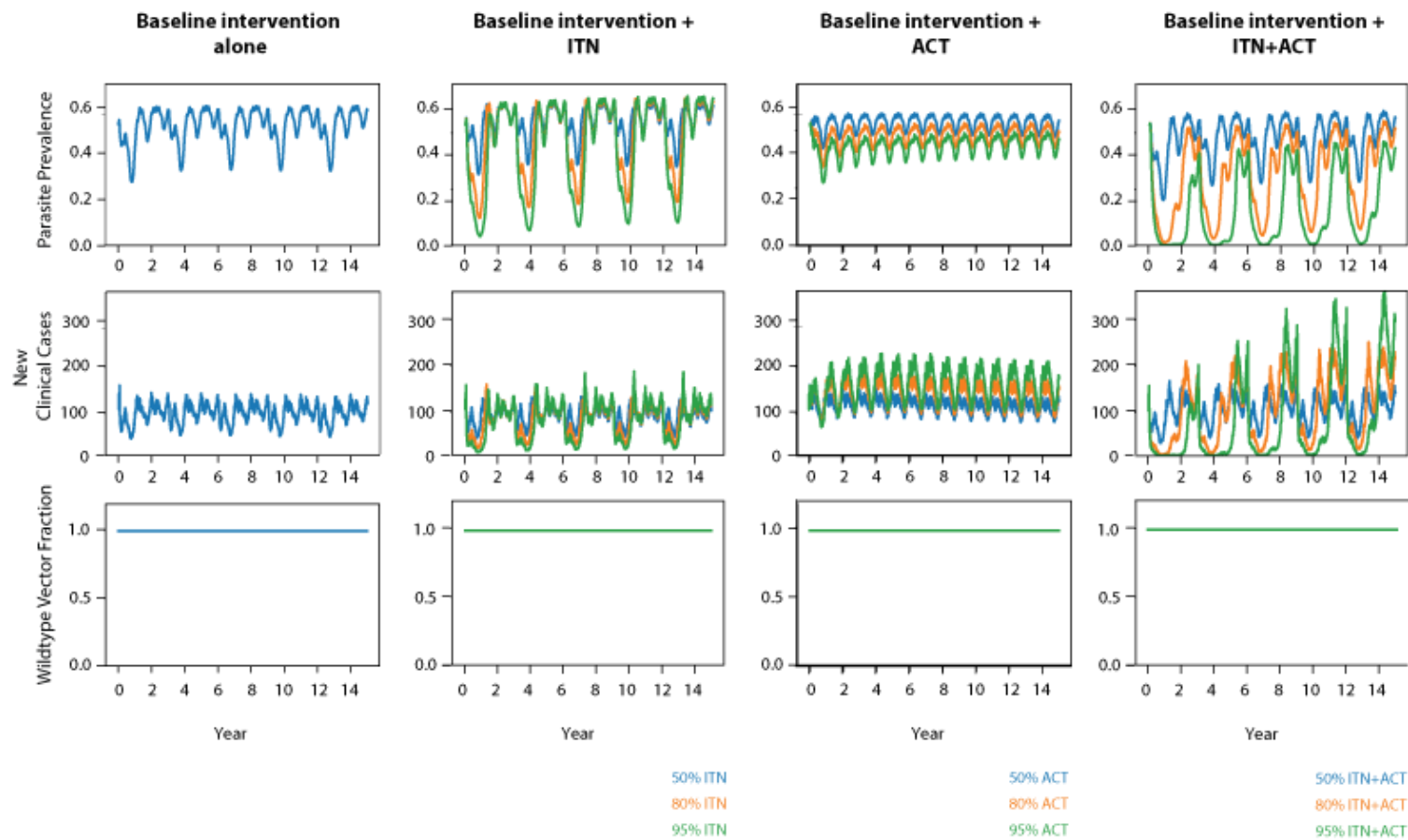
Supplementary: Modeling impact and cost-effectiveness of gene drives for malaria elimination in the Democratic Republic of the Congo

Kasai Central - scenarios with 300 gene drives released at year 0

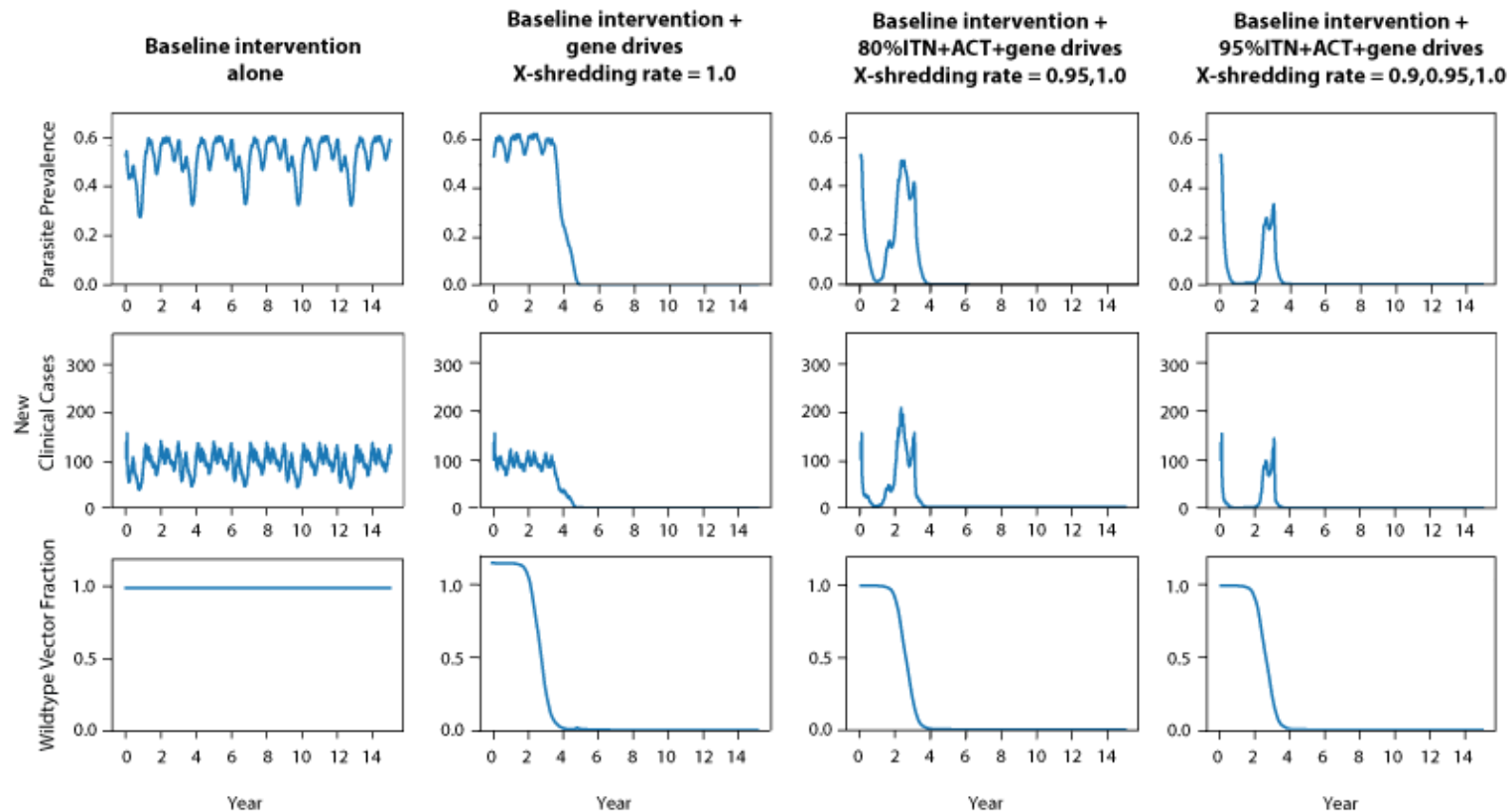


Supplementary: Modeling impact and cost-effectiveness of gene drives for malaria elimination in the Democratic Republic of the Congo

Kinshasa - scenarios without gene drives

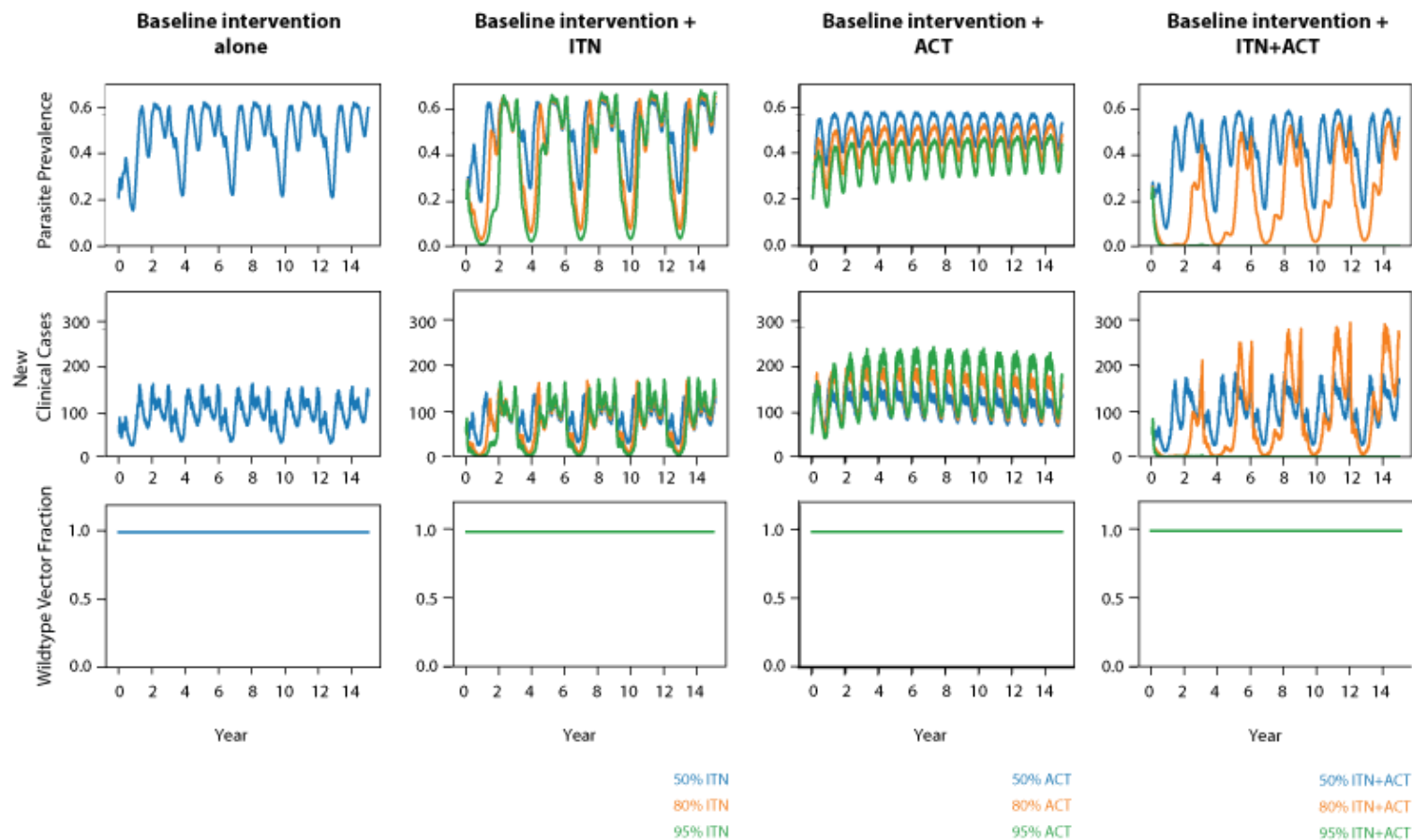


Kinshasa - scenarios with 300 gene drives released at year 0

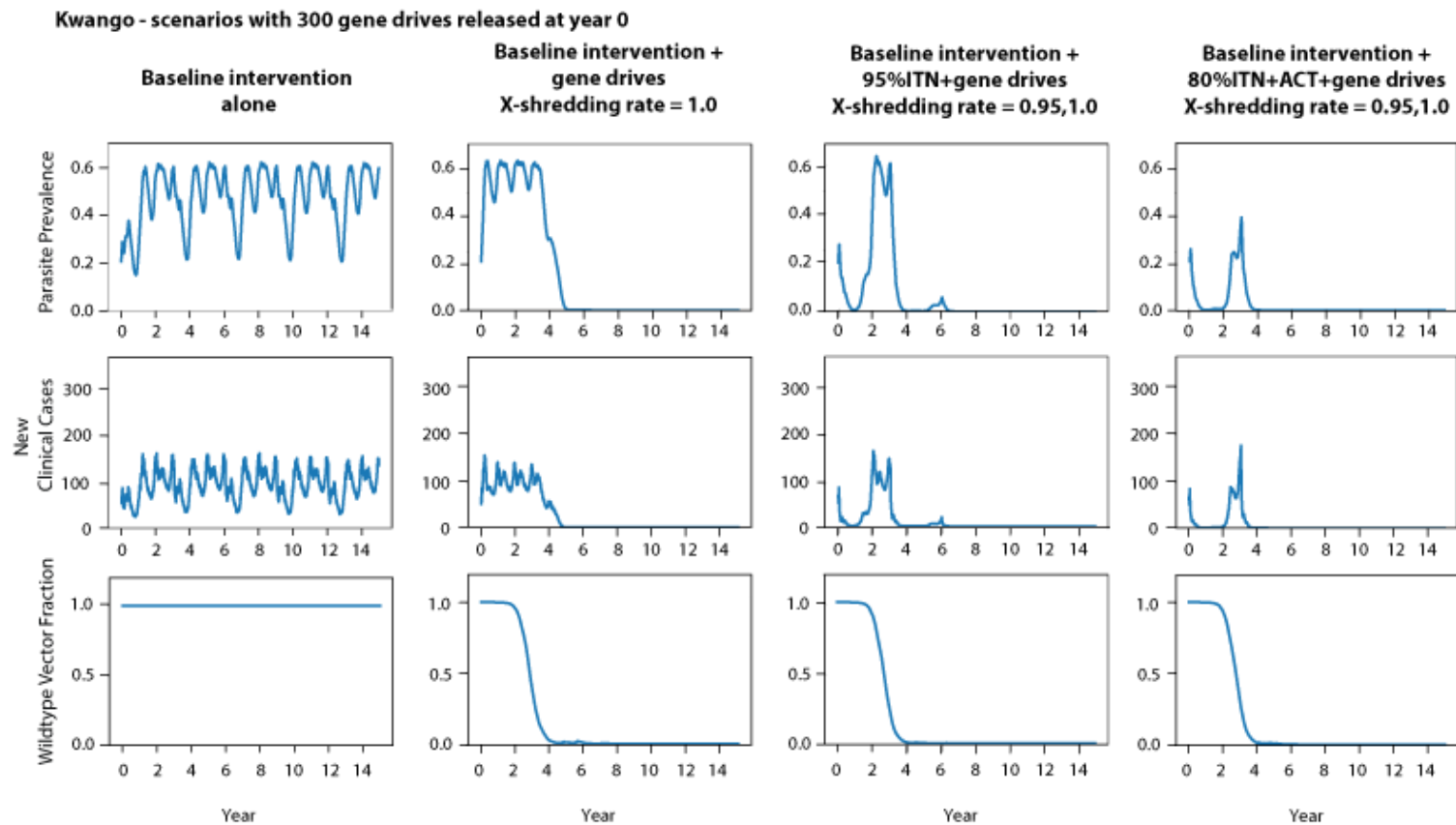


Supplementary: Modeling impact and cost-effectiveness of gene drives for malaria elimination in the Democratic Republic of the Congo

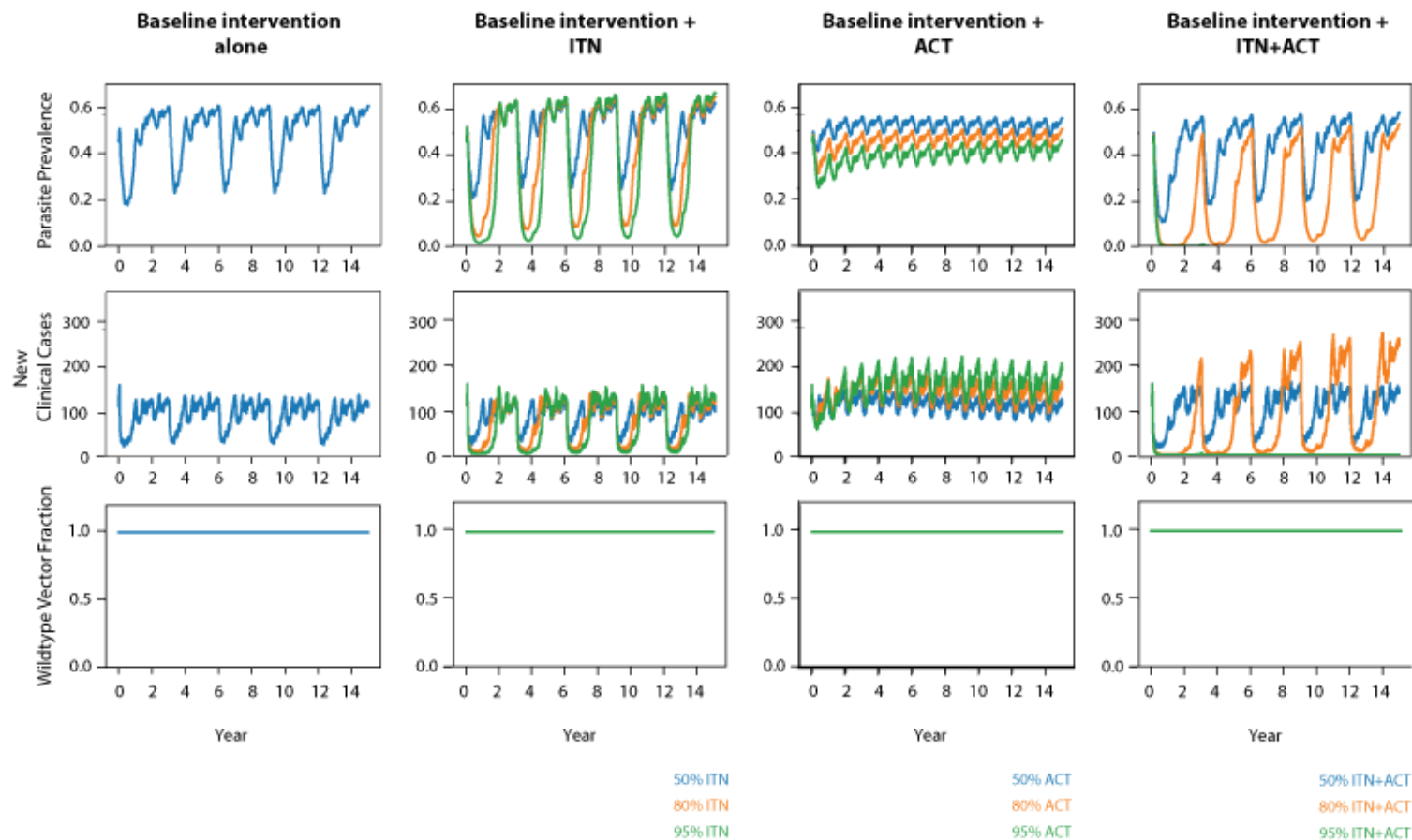
Kwango - scenarios without gene drives



Supplementary: Modeling impact and cost-effectiveness of gene drives for malaria elimination in the Democratic Republic of the Congo

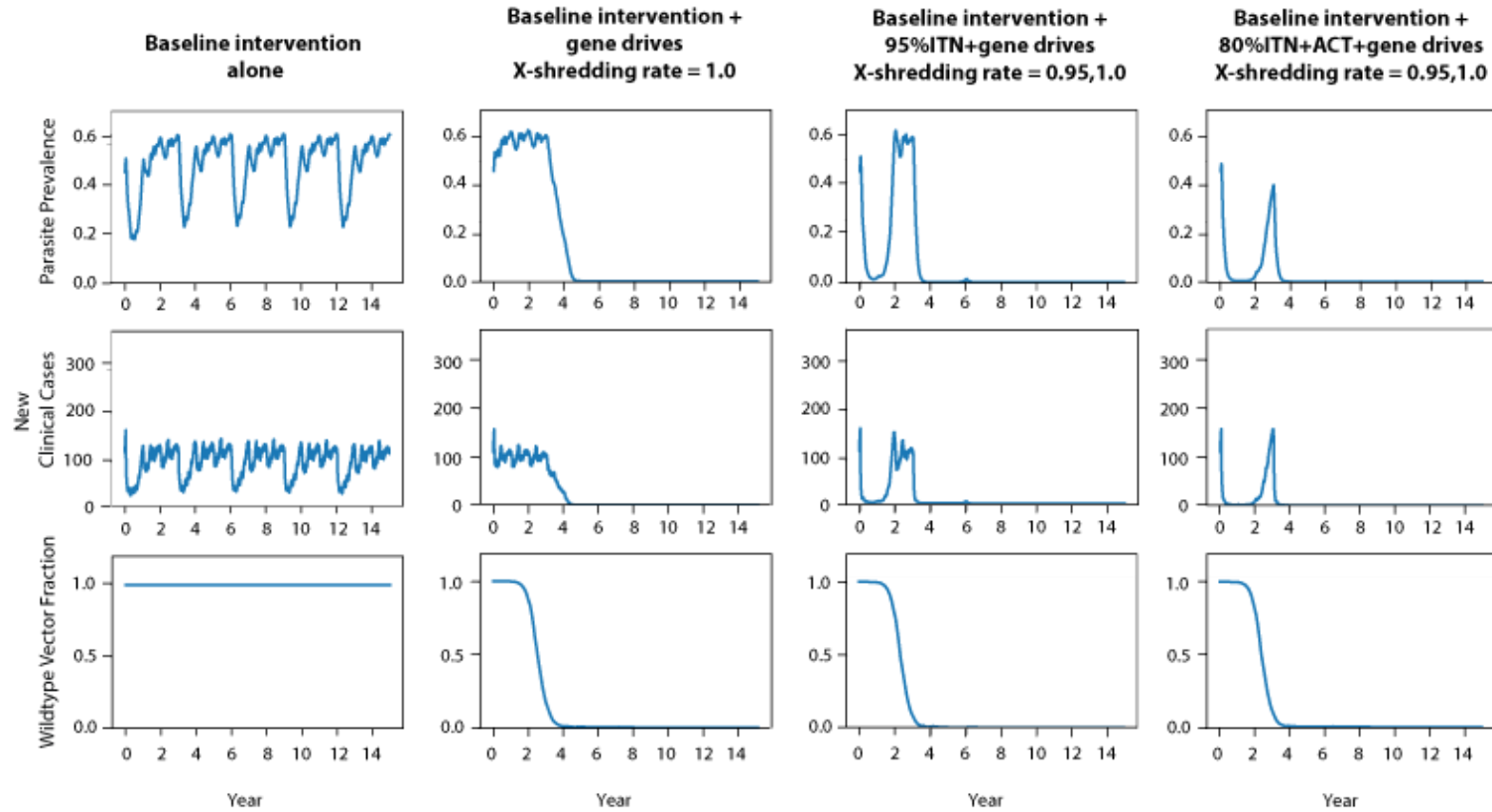


Nord Ubangui - scenarios without gene drives

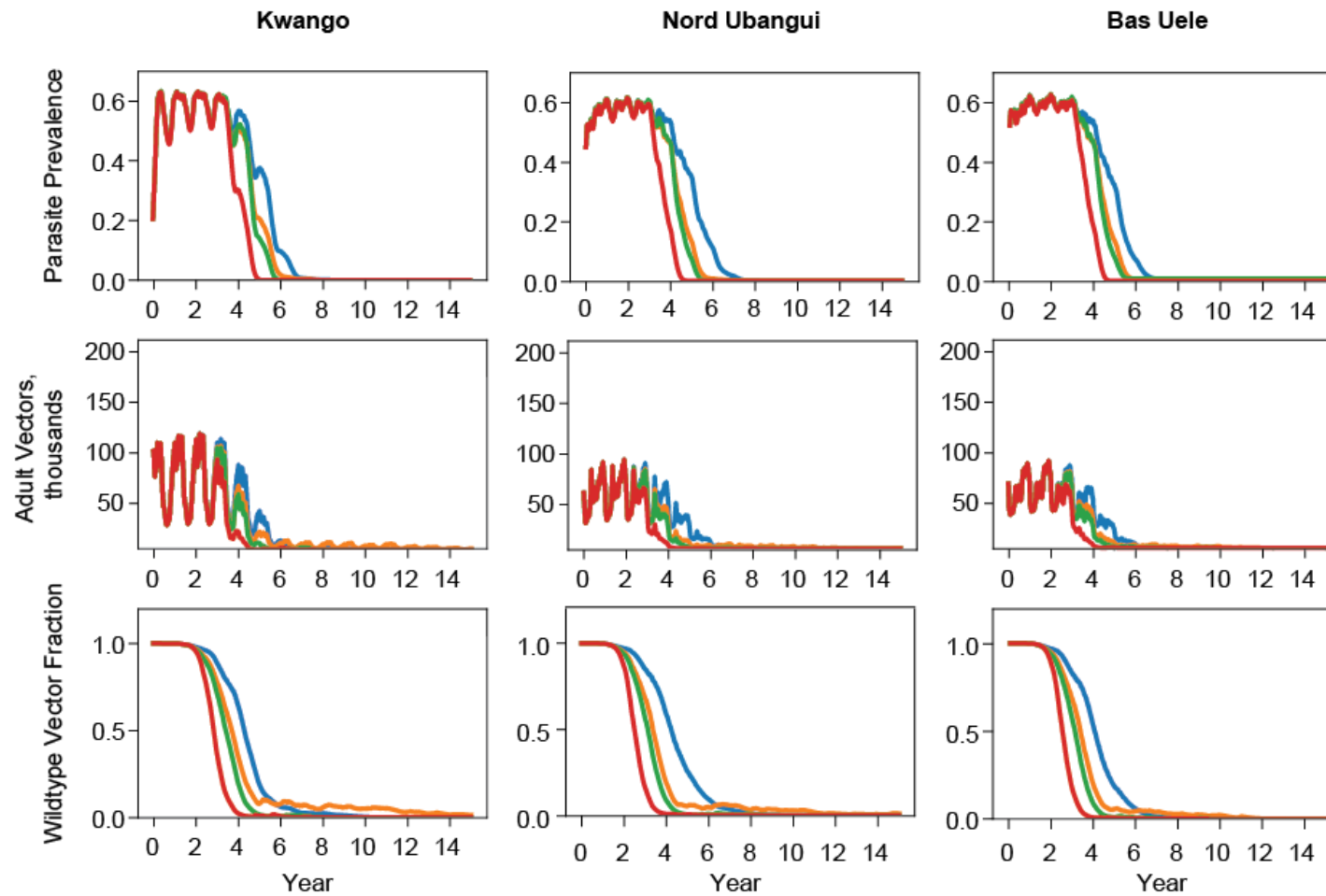


Supplementary: Modeling impact and cost-effectiveness of gene drives for malaria elimination in the Democratic Republic of the Congo

Nord Ubangui - scenarios with 300 gene drives released at year 0



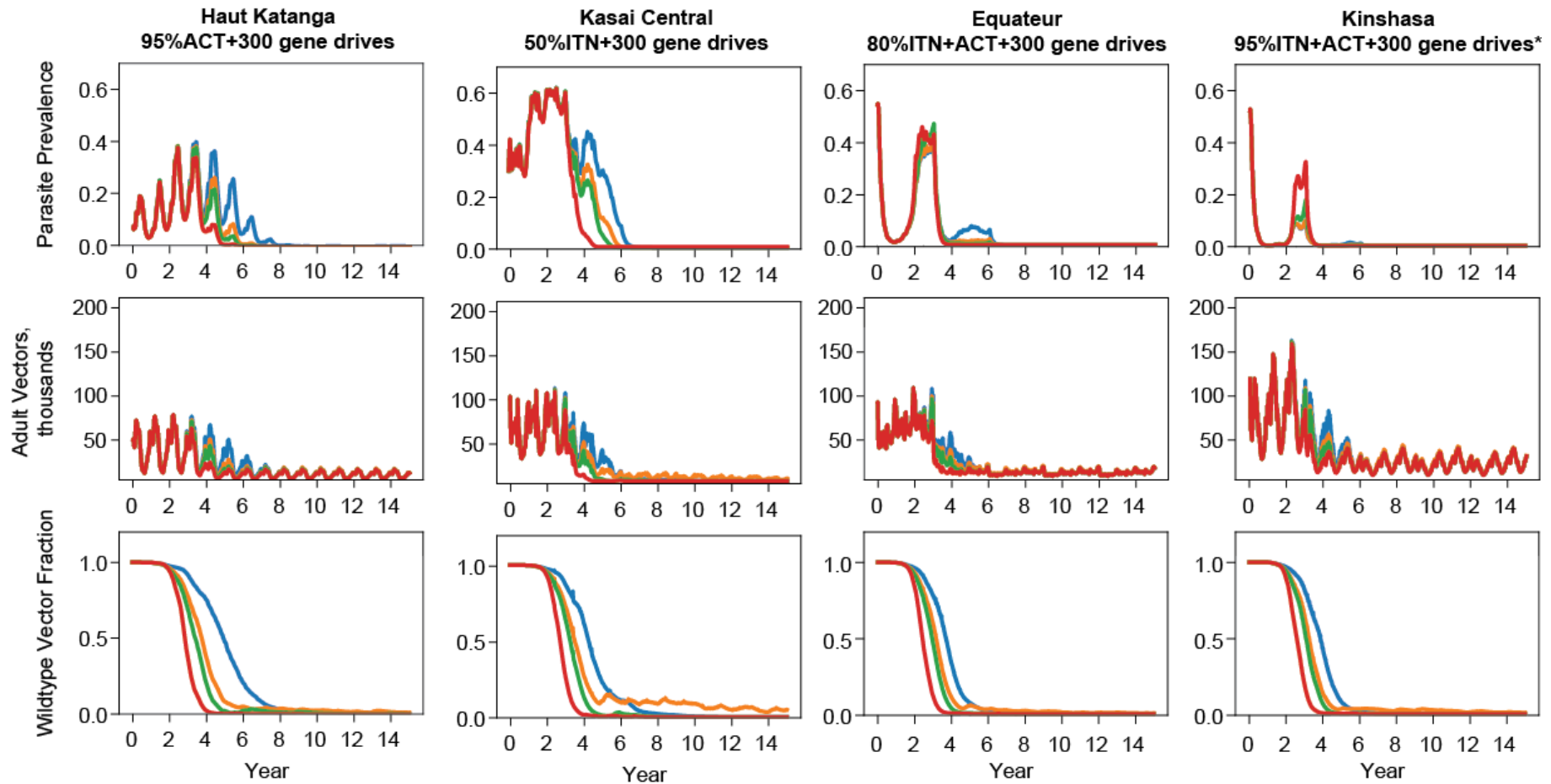
43 **Supplementary 5: Reduced migration testing**



300 gene drives alone, X-shredding rate 1.0
Vector migration multiplier = 0.01
Vector migration multiplier = 0.001
Vector migration multiplier = 0.0001

44

Supplementary: Modeling impact and cost-effectiveness of gene drives for malaria elimination in the Democratic Republic of the Congo



46 **Supplementary 6: Cost-effectiveness analysis**

47
48 **Table S1** Average DALYs averted per year per one million population across all locations estimated from
49 model's outputs in spatial simulation framework. Estimates of each scenario were compared with baseline
50 scenario, which 50% ITNs and 19% ACT coverage were applied. For scenarios that included gene drives,
51 only the estimates from scenarios that resulted in malaria elimination were included.

		Average DALYs averted per year per one million population				
		Model's estimates				
	Intervention	Coverage	Average over 15 years	The first interval: year 1-5	The second interval: year 6-10	The last interval: year 11-15
Scenarios without gene drives	ITNs	50%	-3,696	-6,818	-2,361	-1,910
		80%	1,482	12,827	-1,990	-6,390
		95%	8,727	27,165	2,158	-3,143
	ACT	50%	1,680	-7,733	2,506	10,266
		80%	12,962	10,390	10,212	18,283
		95%	21,437	25,261	15,883	23,169
	ITNs & ACT	50%	8,004	14,973	4,432	4,606
		80%	33,477	60,693	21,288	18,451
		95%	72,706	81,875	69,014	67,230
Scenarios with gene drives	300 gene drive mosquitoes with X-shredding rates = 1.0 alone	NA	57,298	2,888	82,542	86,464
	ITNs plus gene drives with X-shredding rates = 0.95 and 1.0	80	57,561	12,201	81,580	78,904
	ITNs plus gene drives with X-shredding rates = 0.95 and 1.0	95	68,222	43,505	75,420	85,741
	ACT plus gene drives with X-shredding rates = 0.95 and 1.0	95	68,006	40,162	83,090	80,766
	ITNs & ACT plus gene drives with X-shredding rates = 0.95 and 1.0	50	67,740	39,311	83,142	80,766
	ITNs & ACT plus gene drives with X-shredding rates = 0.95 and 1.0	80	81,029	73,234	82,414	87,441
	ITNs & ACT plus gene drives with X-shredding rates = 0.9, 0.95 and 1.0	95	85,307	86,609	81,819	87,492

- 52 **Notes for Table S1:**
- 53 1) NA: Not applicable
- 54 2) Green highlight: the scenario achieved malaria elimination
- 55 3) It is possible that the DALY averted results turned out to be negative figures in some
- 56 scenarios since the combination of ITNs at 50% coverage and ACT at 19% coverage was
- 57 applied in the baseline scenarios that were used as a comparator to reflect reality. For
- 58 example, a 50%ITNs scenario means only ITNs at 50% coverage was applied as a single
- 59 intervention in the scenario. Therefore, it is understandable that the lower efficacy of
- 60 50%ITNs alone could be observed once compared to the comparator in which the combination
- 61 of 50%ITNs and 19%ACT was applied.
- 62 Negative DALYs averted are in red texts.
- 4) WHO estimated the DALYs averted using null (do nothing) scenario as a comparator.

Supplementary: Modeling impact and cost-effectiveness of gene drives for malaria elimination in the Democratic Republic of the Congo

63 Table S2 Average cost per DALY averted of interventions and combinations applied estimated from model's outputs.

			Scenarios without gene drives									Scenarios with gene drives												
			Intervention(s)												Coverage (%)									
			ITNs			ACT			The combination of ITNs and ACT			300 gene-drive mosquitoes with X-shredding rates = 1.0 alone			ITNs plus gene drives with X-shredding rates = 0.95 and 1.0		ITNs plus gene drives with X-shredding rates = 0.95 and 1.0		ACT plus gene drives with X-shredding rates = 0.95 and 1.0		ITNs & ACT plus gene drives with X-shredding rates = 0.95 and 1.0		ITNs & ACT plus gene drives with X-shredding rates = 0.9, 0.95 and 1.0	
Parasite prevalence at the end of the 50-year run-in (%)	Coverage (%)	Interval	50	80	95	50	80	95	50	80	95	Bound	NA	80	95	95	50	80	95					
			WHO's estimates for Afr E (4)			49	42	41	21	14	12	43	35	28	NA	NA	NA	NA	NA	NA	NA	NA		
Estimates from model's outputs	7.27	Haut Katanga	Year 1-5	Lower bound	-36	111	37	23	36	NA	NA	NA	NA	NA	NA	NA	NA	NA	NA					
				Upper bound	-355	641	205	184	200	NA	NA	NA	NA	NA	NA	NA	NA	NA	NA	NA				
			Year 6-10	Lower bound	9	17	26	11	17	NA	NA	NA	NA	NA	NA	NA	NA	NA	NA	NA	NA			
				Upper bound	96	142	89	95	96	NA	NA	NA	NA	NA	NA	NA	NA	NA	NA	NA	NA			
			Year 11-15	Lower bound	9	17	18	12	17	NA	NA	NA	NA	NA	NA	NA	NA	NA	NA	NA	NA			
				Upper bound	99	98	91	97	99	NA	NA	NA	NA	NA	NA	NA	NA	NA	NA	NA	NA			
	20.81	Kwango	Year 1-5	Lower bound	-340	NA	32	NA	NA	20	NA	NA	NA	NA	NA	NA	NA	NA	NA	NA				
				Upper bound	-3,382	NA	175	NA	NA	101	NA	NA	NA	NA	NA	NA	NA	NA	NA	NA	NA			

Supplementary: Modeling impact and cost-effectiveness of gene drives for malaria elimination in the Democratic Republic of the Congo

		Year 6-10	- 427	-494	-156	55	17	12	112	59	9	Lower bound	9	NA	17	NA	NA	18	NA
												Upper bound	85	NA	95	NA	NA	94	NA
		Year 11-15	- 275	-117	-106	18	11	9	120	89	8	Lower bound	8	NA	16	NA	NA	18	NA
												Upper bound	82	NA	90	NA	NA	91	NA
29.65	Kasai Central	Year 1-5	-69	51	26	-29	11	8	46	11	8	Lower bound	11,661	NA	32	NA	NA	20	NA
												Upper bound	116,124	NA	176	NA	NA	103	NA
		Year 6-10	-175	-245	-161	64	20	14	157	68	9	Lower bound	9	NA	18	NA	NA	19	NA
												Upper bound	87	NA	97	NA	NA	97	NA
		Year 11-15	-220	-102	-81	20	11	9	142	121	9	Lower bound	8	NA	16	NA	NA	18	NA
												Upper bound	83	NA	91	NA	NA	92	NA
45.03	Nord Ubangui	Year 1-5	-64	53	30	-27	20	8	48	11	8	Lower bound	82	NA	31	NA	NA	20	NA
												Upper bound	816	NA	172	NA	NA	102	NA
		Year 6-10	-168	-925	-206	125	22	15	138	66	9	Lower bound	9	NA	17	NA	NA	19	NA
												Upper bound	88	NA	96	NA	NA	98	NA
		Year 11-15	-419	-96	-82	17	10	9	129	98	8	Lower bound	8	NA	16	NA	NA	17	NA
												Upper bound	82	NA	89	NA	NA	91	NA
51.64	Bas Uele	Year 0-5	-81	61	29	-36	19	8	48	12	10	Lower bound	65	NA	NA	NA	NA	20	16
												Upper bound	645	NA	NA	NA	NA	105	87
		Year 6-10	-181	-606	-322	117	22	15	140	170	9	Lower bound	9	NA	NA	NA	NA	19	18

Supplementary: Modeling impact and cost-effectiveness of gene drives for malaria elimination in the Democratic Republic of the Congo

													Upper bound	87	NA	NA	NA	NA	97	96
		Year 11-15	-204	-81	-73	19	11	9	180	111	9	Lower bound	8	NA	NA	NA	NA	18	17	
												Upper bound	82	NA	NA	NA	NA	91	90	
52.33	Kinshasa	Year 1-5	-103	104	51	-89	19	9	67	17	10	Lower bound	77	NA	NA	NA	NA	25	18	
												Upper bound	765	NA	NA	NA	NA	129	97	
		Year 6-10	-170	-366	-1,602	110	20	13	181	69	23	Lower bound	9	NA	NA	NA	NA	19	18	
												Upper bound	88	NA	NA	NA	NA	98	97	
		Year 11-15	-271	-118	-98	18	10	8	143	82	36	Lower bound	8	NA	NA	NA	NA	17	17	
													Upper bound	81	NA	NA	NA	NA	91	90
54.33	Equateur	Year 1-5	-104	76	40	-86	17	8	53	40	9	Lower bound	55	NA	NA	NA	NA	23	17	
												Upper bound	547	NA	NA	NA	NA	120	91	
		Year 6-10	-180	5,457	-706	115	21	13	143	75	19	Lower bound	9	NA	NA	NA	NA	19	18	
												Upper bound	88	NA	NA	NA	NA	98	97	
		Year 11-15	-252	-75	-74	20	12	9	164	115	31	Lower bound	8	NA	NA	NA	NA	18	17	
													Upper bound	83	NA	NA	NA	NA	92	91

64 Note for Table S2: 1) NA: Not applicable
 65 2) The scenarios that could achieve malaria elimination when adding gene drives were highlighted in green.
 66 3) \$int: International Dollars
 67 4) upper bound: upper bound price, lower bound: lower bound price
 68

Supplementary: Modeling impact and cost-effectiveness of gene drives for malaria elimination in the Democratic Republic of the Congo

69 Table S3 Incremental cost-effectiveness ratio in year 1-5 after applying intervention(s)

				ICER (\$int per DALY averted)					
				The first interval: year 1-5		The second interval: year 6-10		The last interval: year 11-15	
				Lower bound	Upper bound	Lower bound	Upper bound	Lower bound	Upper bound
				Lower bound	Upper bound	Lower bound	Upper bound	Lower bound	Upper bound
Scenarios without gene drives	ITNs	50%	A	dominated	dominated	negative	dominated	negative	dominated
		80%	B	dominated	dominated	negative	dominated	negative	dominated
		95%	C	6.52	6.52	negative	dominated	negative	dominated
	ACT	50%	D	negative	negative	negative	negative	negative	negative
		80%	E	negative	negative	negative	negative	negative	negative
		95%	F	First point	First point	negative	First point	negative	First point
	ITNs & ACT	50%	G	dominated	dominated	negative	dominated	negative	dominated
		80%	H	0.43	0.43	dominated	2.82	dominated	dominated
		95%	I	0.23	0.23	dominated	0.25	dominated	0.30
Scenarios with gene drives	300 gene drive mosquitoes with X-shredding rates = 1.0 alone	NA	J	dominated	dominated	First point	2.62	First point	2.76
	ITNs plus gene drives with X-shredding rates = 0.95 and 1.0	80	K	dominated	dominated	dominated	2.90	dominated	3.42
	ITNs plus gene drives with X-shredding rates = 0.95 and 1.0	95	L	1.67	10.56	dominated	3.23	dominated	3.07
	ACT plus gene drives with X-shredding rates = 0.95 and 1.0	95	M	1.22	12.10	9.74	2.68	dominated	3.12
	ITNs & ACT plus gene drives with X-shredding rates = 0.95 and 1.0	50	N	2.12	13.66	28.36	2.85	dominated	3.33
	ITNs & ACT plus gene drives with X-shredding rates = 0.95 and 1.0	80	O	0.69	4.06	dominated	2.93	20.99	3.03
	ITNs & ACT plus gene drives with X-shredding rates = 0.9, 0.95 and 1.0	95	P	0.51	3.14	dominated	2.92	17.93	2.99

70 **Keys for Table S3:**

- 71 • ICER: Incremental cost-effectiveness ratio
- 72 • Negative: the incremental cost and the incremental effect are negative
- 73 • Dominated: the incremental cost is positive, and the incremental effect is negative
- 74 • Vector control strategies that could reach malaria elimination were highlighted in green.
- 75 • **Incremental cost-effectiveness ratio (ICER)** is defined as the incremental change in cost, divided by the incremental change in its effectiveness. The first,
- 76 second, and third points of each expansion path were highlighted in red, orange, and yellow accordingly.

77 **Supplementary 7: Costs of vector control approaches that involve the release of**
78 **mosquitoes to modify vector population – A systematic scoping review.**

79 Background

80 Vector control approaches that involve the release of mosquitoes to modify the vector
81 population range from *Wolbachia* related technique to sterile insect production using radiation
82 technique (1,2). For *Wolbachia* related technique, the strategy proposed to infect mosquitoes
83 with *Wolbachia* endosymbiotic that inhibits the viral replication and dissemination and
84 eventually completely blocks vector-borne disease transmissions (3). The latter strategy, sterile
85 insect technique (SIT) exposes male mosquitoes with low radiation in the laboratory production.
86 This leads to sterilization of the male mosquitoes but maintain their copulation capacity (4).
87 Once released to the environment, the sterile male mosquitoes mate wild female mosquitoes
88 which would produce sterile eggs thereby eliminating the next generation progenies (5).
89 Producing SIT insects at a large scale requires standardized mass-rearing procedures to produce
90 good quality males that could compete with wild males to mate with females in the wild
91 environment (6). Later development of these strategies includes the release of genetically
92 engineered mosquitoes carrying dominant lethal allele that are capable of killing a subsequent
93 generation (7). The produced OX513A mosquitoes are males that once mate with wild female
94 mosquitoes will produce descendants that would not reach the adult stage due to lethal genes
95 (8).

96 It is necessary for the decision to adapt these strategies specifically modifying mosquito
97 vectors to be based on evidence of program effectiveness and cost-effectiveness of the
98 interventions (9,10). However, evidence on costs and cost assessments of these strategies
99 remain disparate. Data on costs could provide invaluable information for implementing vector
100 control programs as malaria and other mosquito-borne infectious diseases continue to be a
101 public health problem despite past and on-going control efforts (10). For sustenance of control
102 efforts to achieve the disease elimination goal, it is important that the most cost-effective
103 interventions are deployed (11). This supplementary is a systematic scoping review on costs and
104 cost analysis of vector control approaches that involve the release of mosquitoes to modify the
105 vector population focusing relevance on mosquito-borne diseases, especially malaria.

106 Methods

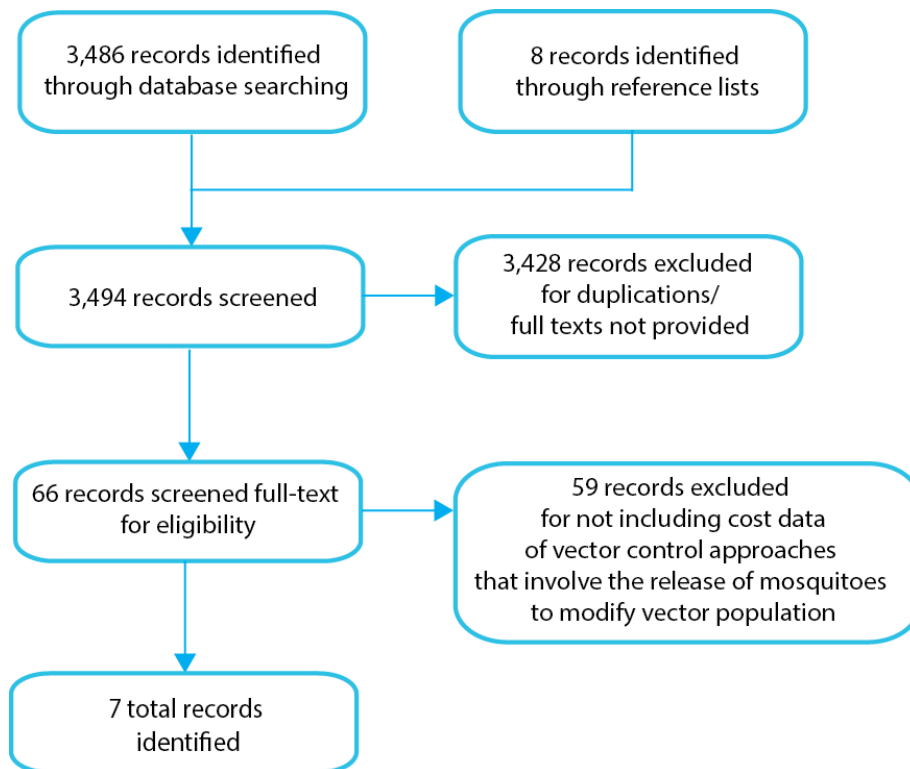
107 A systematic search of literatures in English language pertaining to costs of vector
108 control methods to modify mosquito populations, published from 2010 to 2020, was performed
109 (Diagram S1). Databases include National Center for Biotechnology Information (NCBI),
110 Google Scholar, Crossref, and Scopus. Search terms include ‘Culicidae’ and ‘genetic
111 engineering’ or ‘genetically modified’ and ‘costs’ or ‘cost analysis’ and ‘malaria’.

112 3,486 records of the initial search: 761 articles in PubMed Central, 13 articles in
113 PubMed, 22 items in 13 books, 2480 articles in Google Scholar, 200 articles in Crossref, and 10
114 articles in Scopus, were screened for relevance, and those that included some forms of
115 information on costs of new vector control intended to modify mosquito populations were
116 assessed further in full texts for eligibility. 8 articles from reference lists thought to be relevant
117 based on their titles alone were included in the full-text assessment. We excluded 3,428 articles
118 that were duplicated, or full texts not provided. In full-text assessment, 66 articles were included
119 based on selection criteria suggested costs or cost analysis of vector control methods intended to
120 modify mosquito populations were described in monetary terms. 58 publications did not
121 mention costs or mentioned but did not provide estimates in terms of monetary numbers were
122 excluded. Details of literature selection procedures are in Diagram S1.

Supplementary: Modeling impact and cost-effectiveness of gene drives for malaria elimination in the Democratic Republic of the Congo

123 After eligible articles passed to the full-text assessment, we extracted details on
124 publication year, country/region, target development, target disease, costs, the category of costs.
125 Monetary cost data were first adjusted to US\$ in the year of the initial study using historical
126 exchange rates provided in the article if the adjustment was not supplied by the authors. If the
127 currency year was not mentioned in the article, the publication date or date of article submission
128 was used for the currency conversion. All monetary data were standardized to 2000 US\$ using
129 the US government consumer price index (CPI) data to adjust for inflation (12). All costs were
130 adjusted to US\$ value in year 2000 to allow comparison of the costs of interventions across data
131 sources.

132 Diagram S1 Search strategy for costing studies



133
134
135

Results

136 Four out of seven eligible records focused on or used data from research conducted in
137 low- and middle-income countries and were published between 2011 and 2018. Most studies
138 focused on Dengue using various techniques including *Wolbachia* infected mosquitoes, sterile
139 insect technique (SIT), Release of Insects carrying Dominant Lethals (RIDL), and Genetically
140 engineered (GE) mosquitoes i.e., Oxitec. Only one study specifically identified cost of in
141 malaria control. One study (13) developed a cost model to calculate costs of genetic RIDL
142 technology for dengue and was referenced by another study (14). In terms of costs, costs of the
143 release of SIT insects range from 29.42 to 800 US\$ (14) per million insects depending on cost
144 categories. The costs of GM mosquitoes are varied and higher at the beginning of release with
145 lower cost during later maintenance phase. *Wolbachia* infected mosquitoes gives low cost at
146 0.72 US\$ per person. Table S4 summarized the study characteristics and details on costs
147 described in each study.
148

Supplementary: Modeling impact and cost-effectiveness of gene drives for malaria elimination in the Democratic Republic of the Congo

149 Table S4 Summary of study characteristics and details on costs of vector control approaches that involve the release of mosquitoes to modify the vector
 150 population focusing relevance on mosquito-borne diseases.

References	Publication year	Country	Target development	Target disease	Target species	Cost originally indicated	Converted cost to year 2000	Category of costs
Khamis D, El Mouden C, Kura K, et al. (14)	2018	Not specified	Sterile insect technique (SIT) mosquitoes	Malaria	Not specified	mean = 9.11 (min = 1.93, max = 25.36) US\$ per 10,000 insect per day	6.25 (1.32, 17.39) US\$ per 10,000 insects per days	Operational costs
O'Neill SL, Ryan PA, Turley AP, Wilson G, Retzki K, Iturbe-Ormaetxe I et al. (15)	2018	Australia	<i>Wolbachia</i> infected mosquitoes	Dengue and other <i>Aedes</i> transmitted arboviruses	<i>Aedes aegypti</i>	<i>Wolbachia</i> infected mosquito: 1.07 US\$ per person	0.72 US\$ per person*	Deployment cost
Meghani Z and Boëte C. (16)	2018	Brazil	Genetically engineered (GE) mosquitoes	Dengue	<i>Aedes aegypti</i>	1.9 million US\$ and 384,000 US\$ for subsequent years per 50,000 urban population	1.36 million US\$ and 275,511.96 US\$ for subsequent years per 50,000 urban population	Not specified but mentioned that the costs did not consider recurrent relicensing and subsidizing the cost
						Oxitec: 10 US\$ per person (in year 2016)	Oxitec: 7.17 US\$ per person**	
Alfaro-Murillo JA, Parpia AS, Fitzpatrick MC, Tamagnan JA, Medlock J, Ndeffo-Mbah ML, et al. (17)	2016	Middle-income countries (main country: Brazil)	GE mosquitoes (Oxitec)	Zika	<i>Aedes aegypti</i> (male)	1.9 million US\$ (in year 2015) in the first year and 384,000 US\$ each year thereafter for an urban population of 50,000	1.38 million US\$ (for 1 st year) and 278,987.58 US\$ per year afterward	Not stated

Supplementary: Modeling impact and cost-effectiveness of gene drives for malaria elimination in the Democratic Republic of the Congo

References	Publication year	Country	Target development	Target disease	Target species	Cost originally indicated	Converted cost to year 2000	Category of costs
Undurraga EA, Halasa YA, Shepard DS. (18)	2016	Brazil, Mexico, Panama, Puerto Rico, and Thailand	Genetic modified (GM) mosquitoes	Dengue	<i>Aedes</i>	25-75 US\$ per person per year in suppression phase and 10-20 US\$ per person per year in maintenance phase, based on preliminary estimates by Oxitec.	17.94-53.81 US\$ per person per year in suppression phase and 7.17**-14.35 US\$ per person per year in maintenance phase	Overall cost estimate
Bellini R, Medici A, Puggioli A, Balestrino F, Carrieri AM. (19)	2013	India	SIT	Arboviral diseases in humans	<i>Aedes albopictus</i> (Skuse)	40 US\$ per million male mosquitoes per day	29.42 US\$ per million male mosquitoes per day	Production cost
Alphey N, Alphey L, and Bonsall MB. (13)	2011	Not specified	Genetic Release of Insects carrying Dominant Lethals (RIDL) technology (Release of Insects carrying a Dominant Lethal)	Dengue	<i>Aedes aegypti</i>	1 US\$ per 1000 insects (in year 2008)	0.80 US\$ per 1,000 insects	Construction and operational costs
						2.30 US\$ per case averted (in year 2008)	1.84 US\$ per case averted	
						Mean cost per person protected per year during the assessment period is 0.05–0.07 US\$ or 0.52–0.68 US\$ (release ratio 1 or 10, respectively in year 2008)	Mean cost per person protected per year during the assessment period is 0.04-0.07 US\$ or 0.42-0.54 US\$ (release ratio 1 or 10 respectively)	

151 *lower bound cost applied in the main study.

152 **upper bound cost applied in the main study.

153 **Discussion**

154 During the past 10 years, only handful costing evidence of vector control approaches
155 that involve the release of mosquitoes to modify the vector population focusing relevance on
156 mosquito-borne diseases, especially malaria, has been made available. When costs were
157 mentioned, the studies were often not undertaken alongside an evaluation of the clinical and
158 epidemiological effect of the methods of interest. This systematic scoping review is an early
159 attempt to combine evidence on costs of the approaches.

160 **References**

- 161 1. Committee on Gene Drive Research in Non-Human Organisms: Recommendations for Responsible
162 Conduct; Board on Life Sciences; Division on Earth and Life Studies; National Academies of Sciences
163 Engineering and Medicine. Gene Drives on the Horizon: Advancing Science, Navigating Uncertainty, and
164 Aligning Research with Public Values [Internet]. National Academies Press; 2016. Available from:
165 <http://www.nap.edu/catalog/23405>
- 166 2. Flores HA, O'Neill SL. Controlling vector-borne diseases by releasing modified mosquitoes [Internet]. Vol.
167 16, Nature Reviews Microbiology. Nature Publishing Group; 2018 [cited 2021 Jan 24]. p. 508–18. Available
168 from: <https://www.nature.com/articles/s41579-018-0025-0>
- 169 3. Gomes FM, Barillas-Mury C. Infection of *Anopheles* mosquitoes with Wolbachia: Implications for malaria
170 control [Internet]. Vol. 14, PLoS Pathogens. Public Library of Science; 2018 [cited 2021 Jan 24]. Available
171 from: <https://www.ncbi.nlm.nih.gov/pmc/articles/PMC6237385/>
- 172 4. Reis NN, Silva AL da, Reis EPG, Silva FC e., Reis IGN. Viruses vector control proposal: genus *Aedes*
173 emphasis. Vol. 21, Brazilian Journal of Infectious Diseases. Elsevier Editora Ltda; 2017. p. 457–63.
- 174 5. Reis NN, Silva AL da, Reis EPG, Silva FC e., Reis IGN. Viruses vector control proposal: genus *Aedes*
175 emphasis. Brazilian Journal of Infectious Diseases [Internet]. 2017;21(4):457–63. Available from:
176 <http://dx.doi.org/10.1016/j.bjid.2017.03.020>
- 177 6. Mamai W, Lobb LN, Bimbilé Somda NS, Maiga H, Yamada H, Lees RS, et al. Optimization of mass-rearing
178 methods for *Anopheles arabiensis* larval stages: Effects of rearing water temperature and larval density on
179 mosquito life-history traits. Journal of Economic Entomology. 2018;111(5):2383–90.
- 180 7. Hoang PN, Daniel Zucker J, Choisy M, Vinh HT. Causality analysis between climatic factors and dengue
181 fever using the Granger causality. 2016 IEEE RIVF International Conference on Computing and
182 Communication Technologies: Research, Innovation, and Vision for the Future, RIVF 2016 - Proceedings.
183 2016;49–54.
- 184 8. Wentzel M. Brasil testa duas 'armas' contra o *Aedes aegypti*; saiba quando teremos resultado O mosquito
185 inoculado. BBC News Brasil. 2015;1–9.
- 186 9. WHO. Guidelines for malaria vector control [Internet]. 2019 [cited 2021 Jan 24]. Available from:
187 <https://apps.who.int/iris/bitstream/handle/10665/310862/9789241550499-eng.pdf?ua=1>
- 188 10. WHO. Global Vector Control Response 2017-2030 [Internet]. 2017 [cited 2021 Jan 24]. Available from:
189 [https://apps.who.int/iris/bitstream/handle/10665/259205/9789241512978-](https://apps.who.int/iris/bitstream/handle/10665/259205/9789241512978-eng.pdf;jsessionid=BCA2E1473557FBC791074D7675EA2BE3?sequence=1)
190 [eng.pdf;jsessionid=BCA2E1473557FBC791074D7675EA2BE3?sequence=1](https://apps.who.int/iris/bitstream/handle/10665/259205/9789241512978-eng.pdf;jsessionid=BCA2E1473557FBC791074D7675EA2BE3?sequence=1)
- 191 11. White MT, Conteh L, Cibulskis R, Ghani AC. Costs and cost-effectiveness of malaria control interventions--
192 a systematic review. Malaria journal. 2011 Nov;10:337.
- 193 12. U.S. Bureau of Labor Statistics. 2000 Home : The Economics Daily : U.S. Bureau of Labor Statistics
194 [Internet]. 2000 [cited 2021 Jan 24]. Available from: <https://www.bls.gov/opub/td/2000/home.htm>
- 195 13. Alphey N, Alphey L, Bonsall MB. A model framework to estimate impact and cost of genetics-based sterile
196 insect methods for dengue vector control. PLoS ONE. 2011;6(10).
- 197 14. Khamis D, El Mouden C, Kura K, Bonsall MB. Optimal control of malaria: Combining vector interventions
198 and drug therapies. Malaria Journal [Internet]. 2018;17(1):1–18. Available from:
199 <https://doi.org/10.1186/s12936-018-2321-6>
- 200 15. O'Neill SL, Ryan PA, Turley AP, Wilson G, Retzki K, Iturbe-Ormaetxe I, et al. Scaled deployment of
201 Wolbachia to protect the community from dengue and other aedes transmitted arboviruses. Gates Open
202 Research. 2018 Aug 13;2:36.
- 203 16. Meghani Z, Boëte C. Genetically engineered mosquitoes, Zika and other arboviruses, community
204 engagement, costs, and patents: Ethical issues. PLoS Neglected Tropical Diseases. 2018;12(7):1–7.
- 205 17. Alfaro-Murillo JA, Parpia AS, Fitzpatrick MC, Tamagnan JA, Medlock J, Ndeffo-Mbah ML, et al. A Cost-
206 Effectiveness Tool for Informing Policies on Zika Virus Control. PLoS Neglected Tropical Diseases
207 [Internet]. 2016;10(5):1–14. Available from: <http://dx.doi.org/10.1371/journal.pntd.0004743>
- 208 18. Undurraga EA, Halasa YA, Shepard DS. Economic Analysis of Genetically Modified Mosquito Strategies.
209 In: Genetic Control of Malaria and Dengue. Elsevier Inc.; 2016. p. 375–408.
- 210 19. Bellini R, Medici A, Puggioli A, Balestrino F, Carrieri AM. Pilot Field Trials With *Aedes albopictus*
211 Irradiated Sterile Males in Italian Urban Areas. J Med Entomol [Internet]. 2013 [cited 2021 Jan
212 24];50(2):317–25. Available from: <http://dx.doi.org/10.1603/ME12048>