

# 1 Combined Metabolic Activators accelerates recovery in mild-to-moderate 2 COVID-19

3 **Running title:** Combined Metabolic Activators in COVID-19

4 Ozlem Altay,<sup>1,2,#</sup> Muhammad Arif,<sup>1,#</sup> Xiangyu Li,<sup>1,#</sup> Hong Yang,<sup>1</sup> Mehtap Aydın,<sup>3</sup> Gizem  
5 Alkurt,<sup>4</sup> Woonghee Kim,<sup>1</sup> Dogukan Akyol,<sup>4</sup> Cheng Zhang,<sup>1,5</sup> Gizem Dinler-Doganay,<sup>6</sup> Hasan  
6 Turkez,<sup>7</sup> Saeed Shoaie,<sup>1,8</sup> Jens Nielsen,<sup>9</sup> Jan Borén,<sup>10</sup> Oktay Olmuscelik,<sup>11</sup> Levent Doganay,<sup>12</sup>  
7 Mathias Uhlén,<sup>1,\*</sup> Adil Mardinoglu<sup>1,8,\*</sup>

8 <sup>1</sup>Science for Life Laboratory, KTH - Royal Institute of Technology, Stockholm, Sweden

9 <sup>2</sup>Department of Clinical Microbiology, Dr Sami Ulus Training and Research Hospital, University  
10 of Health Sciences, Ankara, Turkey

11 <sup>3</sup>Department of Infectious Diseases, Umraniye Training and Research Hospital, University of  
12 Health Sciences, Istanbul, Turkey

13 <sup>4</sup>Genomic Laboratory (GLAB), Umraniye Training and Research Hospital, University of Health  
14 Sciences, Istanbul, Turkey

15 <sup>5</sup>School of Pharmaceutical Sciences & Key Laboratory of Advanced Drug Preparation  
16 Technologies, Ministry of Education, Zhengzhou University, Zhengzhou, Henan, PR China

17 <sup>6</sup>Department of Molecular Biology and Genetics, Istanbul Technical University, Istanbul, Turkey

18 <sup>7</sup>Department of Medical Biology, Faculty of Medicine, Atatürk University, Erzurum, Turkey

19 <sup>8</sup>Centre for Host-Microbiome Interactions, Faculty of Dentistry, Oral & Craniofacial Sciences,  
20 King's College London, London, United Kingdom

21 <sup>9</sup>Department of Biology and Biological Engineering, Chalmers University of Technology,  
22 Gothenburg, Sweden

23 <sup>10</sup>Department of Molecular and Clinical Medicine, University of Gothenburg and Sahlgrenska  
24 University Hospital Gothenburg, Sweden

25 <sup>11</sup>Department of Internal Medicine, Istanbul Medipol University, Istanbul, Turkey

26 <sup>12</sup>Department of Gastroenterology, Umraniye Training and Research Hospital, University of  
27 Health Sciences, Istanbul, Turkey

28 <sup>#</sup>Equal Contribution. <sup>\*</sup>Correspondence: Mathias Uhlen ([mathias.uhlen@scilifelab.se](mailto:mathias.uhlen@scilifelab.se)) & Adil  
29 Mardinoglu ([adilm@scilifelab.se](mailto:adilm@scilifelab.se))

30 **Emails:** [havva.altay@scilifelab.se](mailto:havva.altay@scilifelab.se); [muhammad.arif@scilifelab.se](mailto:muhammad.arif@scilifelab.se); [xiangyu.li@scilifelab.se](mailto:xiangyu.li@scilifelab.se);

31 [hong.yang@scilifelab.se](mailto:hong.yang@scilifelab.se); [mehtapaydin10@gmail.com](mailto:mehtapaydin10@gmail.com); [alkurt.gizem@gmail.com](mailto:alkurt.gizem@gmail.com);

32 [woonghee.kim@scilifelab.se](mailto:woonghee.kim@scilifelab.se); [akyol\\_dogukan@hotmail.com](mailto:akyol_dogukan@hotmail.com); [cheng.zhang@scilifelab.se](mailto:cheng.zhang@scilifelab.se);

33 [gddoganay@itu.edu.tr](mailto:gddoganay@itu.edu.tr); [hturkez@atauni.edu.tr](mailto:hturkez@atauni.edu.tr); [saeed.shoaie@kcl.ac.uk](mailto:saeed.shoaie@kcl.ac.uk); [nielsenj@chalmers.se](mailto:nielsenj@chalmers.se);

34 [jan.boren@wlab.gu.se](mailto:jan.boren@wlab.gu.se); [oolmuscelik@medipol.edu.tr](mailto:oolmuscelik@medipol.edu.tr); [levent.doganay@saglik.gov.tr](mailto:levent.doganay@saglik.gov.tr);

35 [mathias.uhlen@scilifelab.se](mailto:mathias.uhlen@scilifelab.se); [adilm@scilifelab.se](mailto:adilm@scilifelab.se)

36

37 **ABSTRACT**

38 There is a need to treat COVID-19 patients suffering from respiratory problems, resulting in  
39 decreased oxygen levels and thus leading to mitochondrial dysfunction and metabolic  
40 abnormalities. Here, we investigated if a high oral dose of a mixture of Combined Metabolic  
41 Activators (CMA) can restore metabolic function and thus aid the recovery of COVID-19  
42 patients. We conducted a placebo-controlled, open-label phase 2 study and a double-blinded  
43 phase 3 clinical trials to investigate the time of symptom-free recovery on ambulatory patients  
44 using a mixture of CMA consisting of NAD<sup>+</sup> and glutathione precursors. The results of both  
45 studies showed that the time to complete recovery was significantly shorter in the CMA group  
46 (6.6 vs 9.3 days) in phase 2 and (5.7 vs 9.2 days) in phase 3 trials. A comprehensive analysis of  
47 the blood metabolome and proteome showed that the plasma levels of proteins and metabolites  
48 associated with inflammation and antioxidant metabolism are significantly improved in patients  
49 treated with the metabolic activators as compared to placebo. The results show that treating  
50 patients infected with COVID-19 with a high dose of CMAs leads to a more rapid symptom-free  
51 recovery, suggesting a role for such a therapeutic regime in the treatment of infections leading to  
52 respiratory problems.

53 **KEYWORDS:** COVID-19, Combined Metabolic Activators, proteomics, metabolomics, omics  
54 data

## 55 1 INTRODUCTION

56 Many patients infected with COVID-19 suffers from respiratory problems, metabolic  
57 dysfunction and exacerbated inflammation that triggers organ failure(1). This has led to more  
58 than 2 million COVID-19 related deaths globally (2) due to severe outcomes (3-7). Although  
59 new treatments regimes have been introduced (8, 9), including Remdesivir and Favipiravir (FP)  
60 (10, 11), there is a need to complement existing therapeutic interventions with new approaches,  
61 in particular those targeting mitochondrial dysfunction and metabolic abnormalities. An  
62 interesting approach is to promote metabolic function by metabolic activators involved in  
63 mitochondrial function.

64 Metabolic abnormalities and a hyperinflammatory response are associated with the  
65 deficiencies in nicotinamide adenine dinucleotide (NAD<sup>+</sup>) and glutathione (GSH) metabolism  
66 (12, 13). The cellular depletion of NAD<sup>+</sup> and GSH may be primary factors related to the  
67 COVID-19 and the risk for mortality. Given the lack of targeted treatments for emerging viruses,  
68 the antiviral properties of repurposed drugs and the use of dietary supplements have gained  
69 considerable attention. N-acetyl-L-cysteine (NAC), nicotinamide riboside (NR), and L-carnitine  
70 have been tested in human trials of viral diseases including COVID-19, and serine has been  
71 evaluated in the treatment of immune system-related disorders (Table S1). Serine is an essential  
72 metabolite for modulation of adaptive immunity by supporting the effector T-cell responses (14).  
73 Many studies have shown that these metabolic activators are beneficial in treating lung diseases  
74 and viral infectious diseases (15-24). Their pharmacological properties, side effects, and dosing  
75 regimens are known, which are advantageous for rapid testing in clinical trials and COVID-19  
76 treatment protocols (24, 25).

77 Previously, we found that combined metabolic activators (CMA) consisting of L-serine  
78 (serine), NAC, NR, and L-carnitine tartrate (LCAT, the salt form of L-carnitine) is a potential  
79 treatment for nonalcoholic fatty liver disease based on integrative analysis of multi-omics data  
80 derived from different metabolic conditions (24, 26-28). We subsequently demonstrated the  
81 safety of CMA in animals and humans (29). That study also revealed that CMA significantly  
82 improves plasma levels of metabolites associated with antioxidant metabolism and inflammatory  
83 proteins.

84 We therefore hypothesized that administration of CMA would improve metabolic  
85 conditions associated with COVID-19, increase the level of NAD<sup>+</sup> and GSH, activate the  
86 mitochondrial metabolism in liver and other tissues, and potentially accelerate the recovery of  
87 COVID-19 patients or reduce its severity. To test this hypothesis, we conducted a randomized,  
88 controlled, open-label, placebo-controlled phase-2 study to evaluate the efficacy, tolerability, and  
89 safety of CMA in ambulatory COVID-19 patients. Based on the favorable findings from the  
90 phase-2 study, we conducted a randomized, controlled, double-blinded phase-3 study to evaluate  
91 the efficacy, tolerability, and safety of CMA in ambulatory COVID-19 patients. Here, we report  
92 the results from the phase-2 and phase-3 clinical trial, including the effect on the time to  
93 recovery which was the primary endpoint for both studies. The results are complimented with an

94 extensive analysis of a large number of biochemical parameters, based on both protein and  
95 metabolite analysis.

## 96 **2 RESULTS**

### 97 **2.1 CMA Accelerates Recovery of COVID-19 Patients in Open-Label Phase-2 Clinical Trial**

98 In the phase-2 study, we recruited 100 adults with a confirmed positive PCR test for  
99 COVID-19. Five patients dropped out for personal reasons, and two were hospitalized before  
100 administrating the CMA. Of the 93 remaining patients, all of whom completed the study, 71  
101 were randomly assigned to the CMA group and 22 to the placebo group (Figure 1A, Dataset  
102 S1A); all patients also received standard of care therapy (for Turkey) with hydroxychloroquine  
103 (HQ) for five days. On Days 0 and 14, we assessed the clinical variables and analyzed the  
104 differences between Day 0 and Day 14 in the CMA and placebo groups (Dataset S2A).

105 The patients' mean age participated in the phase-2 study was 35.6 years (19–66 years),  
106 and 60% were men (Table S2). Patients had a low prevalence of coexisting conditions such as  
107 hypertension (2.1%) and type 2 diabetes mellitus (5.3%), and the mean body mass index (BMI)  
108 was 24.8 (16.8–37.8). The most common COVID-19 symptoms were tiredness (51.6%),  
109 headache (48.3%), cough (31.1%), muscle or joint pain (60.2%), smell or taste disorder (26.8%),  
110 sore throat (23.6%), fever (20.4%), breathing issues (6.4%), nausea or vomiting (5.3%), and  
111 diarrhea (2.1%). The baseline demographic and clinical characteristics were similar in the CMA  
112 and placebo groups (Table S2, Dataset S1A & Dataset S2A). All patients who fully recovered  
113 had a negative PCR test for COVID-19 on Day 14. With regards to safety, no severe adverse  
114 events occurred and two patients in the CMA group (2.8%) reported adverse events. Both had a  
115 mild rash on the upper body and decided to complete the study (Dataset S1A). Adverse effects  
116 were uncommon and self-limiting.

117 In the phase-2 study, we observed that the mean recovery time (the primary outcome  
118 variable) was shorter in the CMA group than in the placebo group (6.6 vs 9.3 days,  $p = 0.0001$ )  
119 (Figure 1B). A univariate Cox regression analysis shows that CMA was significantly associated  
120 with recovery time ( $p < 0.0004$ , hazard ratio 2.59, 95% confidence interval 1.54–4.38) (Table  
121 S3). Multivariate Cox regression analysis analyses also confirmed that CMA independently  
122 reduced recovery time after adjustment for age, gender, other treatment histories, smoking, and  
123 alcohol consumption ( $p < 0.0004$ , hazard ratio 2.68, 95% confidence interval 1.57–4.59) (Figure  
124 1C).

### 125 **2.2 CMA Accelerates Recovery of COVID-19 Patients in Double-Blinded Phase-3 Clinical** 126 **Trial**

127 In the phase-3 study, we recruited and randomly assigned 309 adult patients with a  
128 confirmed positive PCR test for COVID-19. Three patients dropped out for personal reasons, one  
129 patient in the CMA group dropped due to mild allergy, and one patient in the placebo group was  
130 hospitalized. Of the 304 remaining patients, all of whom completed the study, 229 were in the  
131 CMA group and 75 in the placebo group (Figure 2A, Dataset S2B). 62 patients in the placebo

132 group and 187 patients in the CMA group received standard therapy with HQ for five days.  
133 Meanwhile, 13 patients in the placebo group and 42 patients in the CMA group received standard  
134 therapy with FP for five days. On Days 0 and 14, we assessed the clinical variables and analyzed  
135 the differences between Day 0 and Day 14 in the CMA and placebo groups (Dataset S2B).

136 The mean age of the patients who participated in the phase-3 study was 36.3 years (18–66  
137 years), and 57.6% were men (Table S2). Patients had a low prevalence of coexisting conditions  
138 such as hypertension (9.2%) and type 2 diabetes mellitus (6.2%), and the mean BMI was 26.7  
139 (16.8–45.6). The most common symptoms were muscle or joint pain (60.8%), tiredness (50.3%),  
140 cough (43.4%), headache (38.1%), fever (28.2%), sore throat (24%), smell or taste disorder  
141 (20.7%), breathing issues (9.2%), nausea or vomiting (7.8%), and diarrhea (3.6%). The baseline  
142 demographic and clinical characteristics were similar in the CMA and placebo groups (Table S2,  
143 Dataset S1B). Two patients in the CMA group (0.6%) reported mild rash and skin redness as  
144 adverse events, and both decided to complete the study (Dataset S1B).

145 In the phase-3 study, we also confirmed that the mean recovery time was shorter in the  
146 CMA group than in the placebo group (5.7 vs 9.2 days,  $p < 0.0001$ ) (Figure 2B). A univariate Cox  
147 regression analysis shows that CMA was significantly associated with recovery time ( $p < 2.0e$ -  
148 16, hazard ratio 5.63, 95% confidence interval 4.11-7.71) (Table S4). Multivariate Cox  
149 regression analysis also confirmed that CMA independently reduced recovery time after  
150 adjustment for HQ/FP treatment, age, gender, other treatment histories, smoking, and alcohol  
151 consumption ( $p < 2.0e$ -16, hazard ratio 5.77, 95% confidence interval 4.17–7.96) (Figure 2C).

152 To investigate if the administration of CMA is affected by the standard therapy with HQ  
153 and FP, we calculated the mean recovery time in the patient groups treated with HQ and FP  
154 separately. We observed that the mean recovery time was again shorter in CMA group than in  
155 placebo group (5.76 vs 9.32 days,  $p < 0.0001$ ) in the patients treated with HQ only (Figure S1A)  
156 and (5.54 vs 8.77 days,  $p = 0.00034$ ) in the patients treated with FP only (Figure S1B). We also  
157 compared the independent effect of the HQ and FP on COVID-19 patients and found that these  
158 two drugs had a similar efficacy on the recovery of the patients in all (Figure S2A), placebo  
159 (Figure S2B) and CMA (Figure S2C) patient groups. Hence, we observed that CMA  
160 administration accelerated the recovery of the COVID-19 patients independent of the standard  
161 therapy.

### 162 **2.3 CMA Improves Clinical Health in All COVID-19 Patients**

163 We measured clinical variables in all of the patients recruited in the phase-2 and phase-3  
164 studies and analyzed the differences before and after the administration of CMA in the active and  
165 placebo groups (Figure 3A). Analysis of secondary outcome variables showed that serum alanine  
166 aminotransferase (ALT) levels were significantly ( $p = 0.032$ ) lower on Day 14 vs Day 0 only in  
167 the CMA group (Figure 3B). We found that the lactate dehydrogenase (LDH) levels (Figure 3C)  
168 and creatinine levels (Figure 3D) were significantly lower on Day 14 vs Day 0 only in the CMA  
169 group ( $p = 2.88 E$ -04 and  $p = 3.07 E$ -09), respectively. In contrast, we found that the plasma  
170 glucose level was significantly increased on Day 14 vs Day 0 only in the placebo group (Figure



171 3E). Hence, we observed that the level of ALT, LDH, creatinine and glucose was significantly  
172 improved due to the administration of CMA.

173 We also measured the level of clinical chemistry parameters and found that their levels  
174 are significantly changed in both CMA and placebo groups. We found that the level of aspartate  
175 aminotransferase (AST) (Figure S3A) and C-reactive protein (Figure S3B) were significantly  
176 lower in both CMA and placebo groups on Day 14 vs Day 0. In contrast, we found that the levels  
177 of platelets (Figure S3C), white blood cells (Figure S3D), neutrophils (Figure S3E), lymphocytes  
178 (Figure S3F), hemoglobin (Figure S4A), cholesterol (Figure S4B) and triglyceride (Figure S4C)  
179 were significantly increased in both CMA and placebo groups on Day 14 vs Day 0. We observed  
180 that these differences were due to the course of the disease and not affected by the administration  
181 of CMA. D-dimer and Ferritin levels did not significantly differ between both groups on Day 14  
182 vs Day 0 ( $p > 0.05$ ; Figure 3A, Dataset S2C). Our analysis suggested that administration of CMA  
183 improved the clinical parameters in parallel to the decrease in recovery time.

#### 184 **2.4 Metabolomic and Inflammatory Cytokine Analysis for Characterization of COVID-19** 185 **Patients**

186 We characterized the metabolome and inflammatory cytokine markers of 93 COVID-19  
187 patients involved in the phase-2 study and revealed changes associated with the disease and  
188 administration of CMA at the molecular level. We analyzed the plasma level of metabolites and  
189 inflammatory protein markers on Day 0 and Day 14 in both groups. Generation of omics data  
190 may unveil the underlying molecular mechanisms associated to the differences before and after  
191 the disease as well as the differences in the placebo and CMA groups. We generated plasma  
192 metabolomics data and analyzed the plasma levels of 1,021 different metabolites (Dataset S3).  
193 After filtering out the metabolites with missing values in more than 50% of samples, the plasma  
194 metabolomics dataset included 928 metabolites that were subjected to statistical analysis.  
195 Significant differences in plasma metabolite levels on Day 14 vs Day 0 in both the CMA and  
196 placebo groups (Dataset S4) and between the groups on Day 14 and Day 0 (Dataset S5) are  
197 presented. We investigated the associations between the plasma level of all metabolites with the  
198 plasma levels of the metabolic activators as well as degradation products of HQ (Dataset S6).

199 We also measured the plasma levels of 96 inflammatory protein markers using an  
200 inflammation panel to quantify the plasma level of target proteins (Dataset S7). After quality  
201 control and exclusion of proteins with missing values in more than 50% of samples, 72 proteins  
202 were analyzed. Significant differences in plasma protein levels between Day 14 vs Day 0 in both  
203 CMA and placebo groups (Dataset S8) and between the CMA and placebo groups on Day 14 and  
204 Day 0 (Dataset S9) are presented. We investigated the associations between the plasma level of  
205 all inflammation-related proteins with the plasma levels of metabolic activators (Dataset S10).  
206 The results showed that the administration of CMA effected a large number of biochemical  
207 parameters, based on both metabolomics and proteomics analysis.

#### 208 **2.5 CMA Increases the Plasma Levels of Metabolites Associated with Metabolic Activators**

209 We first analyzed the plasma levels of serine, carnitine, NR, and cysteine. CMA  
210 increased the plasma levels of each metabolic activator proportionally on Day 14 vs Day 0 in the  
211 CMA group (Figure 4A, Dataset S4). Moreover, the plasma levels of NR, nicotinamide, 1-  
212 methylnicotinamide and N1-methyl-2-pyridone-5-carboxamide (associated with NR and NAD<sup>+</sup>  
213 metabolism); of serine and N-acetylglycine (associated with serine and glycine metabolism); and  
214 of deoxycarnitine, acetylcarnitine, (R)-3-hydroxybutyrylcarnitine, linoleoylcarnitine (C18:2), and  
215 dihomolinoleoylcarnitine (C20:2) (associated with carnitine metabolism) were significantly  
216 higher in the CMA group than in the placebo group on Day 14 (Dataset S5).

217 Next, we investigated the relationship with the plasma level of administrated metabolic  
218 activators and other metabolites (Dataset S6). We analyzed the 38 most significantly correlated  
219 plasma metabolites with serine, L-carnitine, NR, and cysteine (Figure 4B, Dataset S6) and found  
220 three clusters of metabolites which are significantly correlated with serine only, cysteine only  
221 and significantly correlated with all serine, L-carnitine, and NR. We observed that cysteine had a  
222 different dynamic compared to the other three metabolic activators. On the other hand,  
223 homostachydrine involved in xenobiotics metabolism as well as succinoyltaurine involved in  
224 methionine, cysteine, SAM, and taurine metabolism were significantly negatively correlated with  
225 serine and cysteine, respectively. We also found that homostachydrine, which was significantly  
226 positively correlated hydroquinone sulfate (degradation product of hydroxychloroquine), was  
227 significantly downregulated on Day 14 vs Day 0 in the CMA group (false-discovery rate  
228 [FDR]=1,51E-25, Dataset S4) as well as in the CMA group compared to placebo group on Day  
229 14 (FDR=1,24E-10, Dataset S5).

230 COVID-19 patients both in the CMA and placebo groups received HQ for 5 days. In  
231 order to study the effect of HQ on the global metabolism of the patients, we first analyzed the  
232 plasma level of the degradation products of HQ including 2-methoxyhydroquinone sulfate and  
233 hydroquinone sulfate. We found that the plasma level of these two metabolites was significantly  
234 lower in the CMA vs placebo group on Day 14 and the plasma level of 2-methoxyhydroquinone  
235 sulfate was significantly downregulated on Day 14 vs Day 0 in the CMA group (Figure 4C).  
236 Hence, we observed that administration of CMA effected the utilization of the HQ in COVID-19  
237 patients. Next, we identified the most significantly correlated 12 plasma metabolites with these 2  
238 metabolites and found that the plasma level of 2-methoxyhydroquinone sulfate and  
239 hydroquinone sulfate is associated with the sulfated metabolites, N-acetyltryptophan involved in  
240 tryptophan metabolism, S-carboxyethylcysteine involved in cysteine metabolism and cholate  
241 involved in primary bile acid metabolism (Figure 4D). Based on this plasma metabolomics  
242 analysis, we observed that the metabolic changes reported in the CMA group were not due to the  
243 treatment of patients with hydroxychloroquine. On the other hand, we observed that CMA  
244 effected the utilization of HQ in COVID-19 patients. Our analysis indicated that 2 weeks  
245 administration of CMA increased the plasma level of the individual metabolic activators and  
246 improved the plasma level of metabolites associated with the anti-oxidant metabolism.

247

## 248 **2.6 Cytokine Levels During Recovery of COVID-19 Patients**

249 Mortality in COVID-19 patients has been strongly associated with the presence of the  
250 cytokine storm induced by the virus. Increased cytokine levels are also linked with increased  
251 viral load and the severe form of the disease (30). To study the changes in the cytokine levels, we  
252 determined the dynamic range of 72 inflammatory proteins in plasma samples with the Olink  
253 multiplex inflammation panel (Dataset S7). The plasma level of 14 proteins were significantly  
254 (false-discovery rate:  $FDR < 0.01$ ) changed following the recovery of the patients on Day 14 vs  
255 Day 0, in the placebo group (Figure 5A, Dataset S8). The plasma levels of 9 proteins including  
256 CSF-1, CX3CL1, CXCL10, IFN-gamma, IL-18R1, MCP-2, OPG, TNF, and TRAIL were  
257 significantly ( $FDR < 0.01$ ) decreased, whereas the plasma level of remaining 5 proteins including  
258 Flt3L, MCP-4, TNFRSF9, TRANCE and TWEAK was slightly but significantly ( $\log_2FC < 0.15$   
259 &  $FDR < 0.01$ ) increased after 14 days in the placebo group treated only with HQ (Figure 5A,  
260 Dataset S8). These results demonstrate that the administration of CMA significantly decreased  
261 and increased cytokine levels associated with inflammation during the recovery of the COVID-  
262 19 patients.

## 263 **2.7 Effect of CMA on the Plasma Cytokine Levels**

264 We analyzed the effect of CMA on plasma cytokine levels and found that 36 proteins  
265 were significantly ( $FDR < 0.01$ ) different in the CMA group on Day 14 vs Day 0. 12 of these  
266 protein markers were significantly increased whereas 24 of these protein markers were  
267 significantly decreased on Day 14 vs Day 0. We observed that 14 of the 36 proteins were also  
268 significantly ( $FDR < 0.01$ ) differentially expressed in the placebo group (Figure 5, Dataset S8).  
269 After filtering out the proteins based on  $\log_2FC$ , we found that the plasma levels of 11 proteins  
270 including, IL6, IL10, IFN-gamma, CXCL10, CCL19, CX3CL1, CXCL11, IL-15RA, IL-17C,  
271 MCP-2 and TNF were significantly ( $FDR < 0.01$ ) downregulated and the plasma level of  
272 TRANCE and EN-RAGE was significantly ( $FDR < 0.01$ ) upregulated in the CMA group (Figure  
273 5 & Dataset S8).

274 Next, we compared the differences in the decrease of the cytokine levels both in CMA  
275 and placebo groups and observed that the magnitude of the decrease in the plasma level of  
276 downregulated cytokines was greater in the CMA group compared to placebo group on Day 14  
277 (Figure 6 & Dataset S8). Moreover, we found that the plasma levels of CSF-1, IL-15RA, IL18,  
278 MCP-1 and TNF were significantly downregulated in the CMA group compared to placebo  
279 group on Day 14, whereas there was no significant difference in the plasma level of these  
280 proteins between the groups on Day 0 (Dataset S9).

281 We investigated the association between the plasma cytokine levels and the individual  
282 metabolic activators and found that the plasma level of most cytokine levels were significantly  
283 inversely correlated with the plasma level of serine (Figure 5B, Dataset S10). Hence, based on



284 our analysis, we suggest that serine is a key metabolic activator leading to the decrease in the  
285 cytokine levels and improvement in metabolic conditions in COVID-19 patients.

## 286 **2.8 Effect of CMA on Global Metabolism**

287 We identified the significantly (FDR<0.001) different plasma metabolites on Day 14 vs  
288 Day 0 in both CMA and placebo groups. We found that the plasma levels of 122 metabolites  
289 were significantly different in both CMA and placebo groups, whereas plasma levels of 231 and  
290 20 metabolites were specifically significantly different only in the CMA and placebo groups,  
291 respectively (FDR<0.001, Dataset S4). Evaluation of plasma metabolites that differed  
292 significantly on Day 14 vs Day 0 in each group showed that larger number of metabolites related  
293 to amino acid (Figure 6A), lipid metabolism (Figure S5) and other metabolic pathways (Figure  
294 S6) were altered in CMA group compared to the placebo group (Dataset S4). By investigating  
295 the metabolites involved in amino acid metabolism, we found that plasma levels of 25  
296 metabolites were significantly different both in the CMA and placebo group, whereas 70 and 6  
297 were specifically significantly altered only in the CMA and placebo group, respectively  
298 (FDR<0.001, Figure 6A, Dataset S4).

299 Increased plasma levels of metabolites in the kynurenine pathway were associated with  
300 COVID-19 severity (31). In our study, we found that plasma levels of kynurenate and 8-  
301 methoxykynurenate were significantly lower on Day 14 vs Day 0 in the CMA group (Figure 6B,  
302 Dataset S4). The plasma level of kynurenine was significantly decreased on Day 14 vs Day 0  
303 both in the CMA and placebo groups. However, the magnitude of the reduction of kynurenine  
304 was significant in the CMA vs placebo on Day 14 (Figure 6C, Dataset S4 & S5). Reduction in  
305 the plasma level of kynurenine and kynurenate was positively correlated with plasma serine  
306 (Dataset S6).

307 Plasma levels of metabolites related to the urea cycle (3-amino-2-piperidone, N,N,N-  
308 trimethyl-alanyl proline betaine, homoarginine, and arginine) were significantly decreased in the  
309 CMA vs placebo group on Day 14 (Figure 6B, Dataset S4). Specifically, the plasma level of 3-  
310 amino-2-piperidone was significantly decreased in CMA group on Day 14 vs Day 0 (Figure 6B,  
311 Dataset S4) and inversely correlated with the plasma level of serine (Dataset S6).

312 Emerging evidence indicates that kidney complications in COVID-19 patients are  
313 frequent, but the potential impact of SARS-Cov2 on the kidney is still undetermined (32). Recent  
314 studies showed that plasma level of N,N,N-trimethyl-5-aminovalerate involved in lysine  
315 metabolism is an indicator of elevated urinary albumin excretion (33). In our study, we found  
316 that the plasma level of N,N,N-trimethyl-5-aminovalerate was significantly increased on Day 14  
317 vs Day 0 in the placebo group while its plasma level is significantly decreased on Day 14 vs Day  
318 0 in the CMA group (Figure 6B, Dataset S4). Moreover, the plasma level of creatinine was only  
319 significantly decreased on Day 14 vs Day 0 in the CMA group (Figure 6B, Dataset S4). Plasma  
320 level of both creatinine and N,N,N-trimethyl-5-aminovalerate were significantly decreased in the  
321 CMA vs placebo group on Day 14 (Dataset S5). The plasma reduction on N,N,N-trimethyl-5-  
322 aminovalerate is significantly inversely correlated with the plasma level of serine (Dataset S6).

323 Lipids play a fundamental role in multiple stages of the virus cycle. Specific lipid species  
324 of cellular membranes (e.g. cholesterol and sphingolipids) are not only barriers but also receptors  
325 to infection initiation (34). In our study, plasma level of 71 metabolites involved in lipid  
326 metabolism were significantly (FDR<0.001) different in both groups, whereas 102 and 5 were  
327 specifically significantly changed only in the CMA and placebo groups, respectively (Figure  
328 S5A, Dataset S4). Plasma level of a significant number of metabolites associated with ceramides  
329 and sphingomyelins were significantly decreased on Day 14 vs Day 0 in both CMA and placebo  
330 groups (Figure S5B, Dataset S4). However, the reduction in the plasma level of metabolites  
331 involved in ceramides and sphingomyelins was more dramatic in the CMA group (Figure S5B,  
332 Dataset S4). Plasma level of metabolites associated with fatty acid metabolism (acyl carnitines)  
333 were significantly increased in the CMA group on Day 14 vs Day 0. In both groups, plasma  
334 levels of lysophospholipid, phosphatidylcholine, and androgenic steroids were significantly  
335 increased on Day 14 vs Day 0 (Figure S5B and C, Dataset S4). These alterations were  
336 significantly positively correlated with carnitine and serine levels (Dataset S6).

337 Ketone bodies have important signaling roles in restoring altered energy metabolism and  
338 redox state. In this study, we found that the plasma level of 2R,3R-dihydroxybutyrate was  
339 significantly decreased in the CMA group on Day 14 vs Day 0 (Figure S5B, Dataset S4). We  
340 also observed that plasma level of carnitine and serine also showed a significant inverse  
341 correlation with the plasma level of 2R,3R-dihydroxybutyrate (Dataset S6). We also found that  
342 vitamins (Tocopherol, vitamin A, and riboflavin) and benzoate metabolism were significantly  
343 increased in both groups, whereas the plasma level of metabolites associated with the TCA cycle  
344 intermediate products were upregulated on Day 14 vs Day 0 in the CMA (Figure S6, Dataset S4).  
345 Overall, these results indicate that the administration of CMA effected the global metabolism of  
346 the patients.

## 347 **2.9 Integrative Analysis of Clinical Variables with Proteomics and Metabolomics data**

348 We have studied the associations between the significantly improved (decreased) clinical  
349 parameters including AST, ALT, LDH and TGs with the plasma level of all metabolites (Dataset  
350 S11) and all inflammation proteins (Dataset S12) and presented the 10 most significantly  
351 correlated metabolites (Figure 7A) and inflammation proteins (Figure 7B). The reduction in all  
352 four clinical parameters was significantly correlated with the plasma level of serine and glycine.  
353 We also found that plasma level of cysteine-glutathione disulfide was significantly inversely  
354 correlated with the level of AST ALT and TGs. Hence, we propose that serine is the key  
355 metabolic activator leading to the improvement in the clinical parameters in COVID-19 patients.

356 We also evaluated the association of plasma proteins with the level of AST, ALT, LDH  
357 and TG and found that CDCP1 was positively correlated with all parameters (Figure 7B, Dataset  
358 S12). Plasma level of a set of inflammatory proteins (MCP-2, CXCL10, CSF-1, IL-18R1, TNF,  
359 MCP-1, CDCP1 and VEGFA) were significantly positively correlated with the level of ALT and  
360 AST (Figure 7B). Interestingly, we found that plasma levels of IL10, CCL19, CXCL9, CXCL1,  
361 OPG, CX3CL1, PD-L1, LIF-R, IFN-gamma and TRAIL were positively correlated and

362 TRANCE, IL18, IL-12B, TWEAK, uPA and IL6 were inversely correlated with the level of  
363 AST, however these proteins were not significantly correlated with the level of ALT. On the  
364 other hand, the level of ALT was also significantly positively correlated with HGF and  
365 negatively correlated with CCL28 and SCF, which were not significantly correlated with the  
366 level of AST. Additionally, level of TG was positively correlated with the plasma level of  
367 TRANCE, IL-10RB, CDCP1 and HGF, however its inverse correlation was observed with the  
368 plasma level of CX3CL1 and SCF. We also found that hemoglobin levels were significantly  
369 correlated with the inflammatory proteins including EN-RAGE, DNER, IL-10RB, VEGFA,  
370 HGF, CST5 and MCP-1 (Dataset S12).

371 Finally, we constructed a multi-omics correlation network based on clinical variables,  
372 proteomics, and metabolomics data (Dataset S13, unfiltered network). The full network can be  
373 explored via iNetModels (<http://inetmodels.com>), an open-access interactive web platform for  
374 multi-omics data visualization and database. This network showed direct and indirect intra- and  
375 inter-omics functional relationships of different analytes. We subsequently overlaid the  
376 statistically altered analytes (clinical variables, metabolites and proteins) to the sub-network of  
377 the individual metabolic activators and degradation products of HQ (Figure 7C). The subnetwork  
378 was built from the union of [top 15 metabolite neighbors](#), and [all protein and clinical neighbors](#).  
379 We identified the serine as the most connected metabolic activator to clinical variables,  
380 metabolites, and proteins. Moreover, we performed centrality analysis of the network to identify  
381 the most central inflammation protein markers, and found that MCP-4, IL-18R1, HGF, CXCL10  
382 and CSF-1 were among top 10 most-central (degree) protein nodes which all showed significant  
383 downregulation on Day 14 vs Day 0 in the CMA group. We found that all of them, except MCP-  
384 4, were significantly inversely correlation with serine (Dataset S14). Hence, based on multi-  
385 omics network analysis, we confirmed our findings based on single-omics analysis and propose  
386 that serine acts as the key metabolic activator in the CMA and the effect seen in the clinical study  
387 is mostly due to the serine in the CMA.

388

### 389 **3 CONCLUSION AND DISCUSSION**

390 Our study shows that the combination of CMA and standard therapy significantly reduces  
391 the mean recovery time of ambulatory patients with COVID-19 as compared with placebo and  
392 standard therapy (6.6 vs 9.3 days in phase-2) and (5.7 vs 9.2 days in phase-3). Our multi-omics  
393 analysis on patients recruited in phase-2 trial is consistent with the notion that CMA improves  
394 clinical outcomes in COVID-19 by improving immune response, and regulating antioxidant,  
395 amino acid and lipid metabolism. After having a positive result on the phase 2 study with 93  
396 patients, we designed a double-blinded placebo-controlled Phase 3 study with 304 patients. We  
397 have shown that administration of the CMA accelerates the recovery of the patients independent  
398 of standard therapy. We have also shown that the clinical parameters including ALT, LDH,  
399 creatinine and glucose were significantly improved after the administration of the CMA in a total  
400 of 397 patients recruited in phase 2 and phase 3 trial. In the phase 3 trial, we also included the

401 patients treated with FP, and again showed that CMA accelerates the recovery of the patients  
402 independent of the standard therapy. We also compared the effect of the HQ and FP in the  
403 recovery of the patients and observed no significant differences between the drugs used in the  
404 standard therapy.

405 Although COVID-19 primarily causes symptoms of respiratory infection, it often causes  
406 gastrointestinal and hepatic symptoms, including nausea/vomiting, diarrhea, and elevated levels  
407 of liver enzymes (1). Some studies have reported that liver deficiencies correlate with worse  
408 outcomes, including longer hospitalization, progression to severe COVID-19, admission to the  
409 intensive care unit, and death (35-38). Mounting evidence shows that the GSH level is  
410 insufficient to maintain and regulate the thiol redox status of the liver in subjects with liver  
411 dysfunction (26). Depleted liver GSH can be restored by administration of NAC, serine and  
412 glycine which can be synthesized through the interconversion of serine. Serine synthesis is  
413 downregulated in NAFLD patients, and administration of serine enhances homocysteine  
414 metabolism in mice and rats (39). Two other components of CMA including carnitine and NR,  
415 which stimulate the transfer of fatty acids from the cytosol to mitochondria, are also depleted in  
416 liver diseases (40-43). Hence, we have here analyzed the effect of a mixture of CMA consisting  
417 of serine, a cysteine analogue, salt form of L-carnitine and an NAD<sup>+</sup> precursor, administered to  
418 COVID-19 patients to increase the GSH level in liver and other tissues.

419 NAD<sup>+</sup> is an essential metabolite in cellular energy generation and redox biology.  
420 Recently, it has been shown that the anti-coronaviral activities of four noncanonical PARP  
421 isozyme activities are limited by cellular NAD<sup>+</sup> status (44). Additionally, a significant activation  
422 of kynurenine pathway in severe COVID-19 population has been reported (31). Tryptophan is an  
423 essential amino acid that is fundamental for the biosynthesis of fundamental neuromodulators,  
424 namely serotonin and melatonin. Tryptophan catabolism through kynurenine pathway is the sole  
425 route for de novo NAD<sup>+</sup> synthesis. In this context, CMA significantly decreased the plasma  
426 levels of metabolites involved in kynurenine pathway, and this reduction might play a crucial  
427 role in restoring the metabolic balance in COVID-19 patients.

428 As with all metabolomics studies, not every metabolite can be captured in a single assay.  
429 In this study, we were unable to measure plasma NAD<sup>+</sup> in the study participants. NAD<sup>+</sup> levels  
430 in the plasma are dynamic and are typically much lower than levels found in the cells and tissues.  
431 Unfortunately, plasma NR is not a surrogate marker for NAD<sup>+</sup> status and has an estimated half-  
432 life of 2.7 hours and a C<sub>max</sub> of 3 hours(45). In a clinical kinetics study following 9 days of NR  
433 supplementation, NR levels still appeared to peak and trough at 3 hours, however NAD<sup>+</sup> levels  
434 were consistent across time points, having reached steady state (45). Any correlations related to  
435 plasma NR and the up- or down-regulation of metabolites or inflammatory markers is not likely  
436 reflective of actual NAD<sup>+</sup> status in the study participants. Future research that evaluates NAD<sup>+</sup>  
437 levels in COVID-19 patients before and after CMA treatment, as well as treatment with the  
438 individual co-factors separately would provide further evidence of the role of NAD<sup>+</sup> status on  
439 potential correlation (and causation) to changes in the metabolome and inflammatory markers.

440 In this study, patients also received HQ or FP, recommended as standard therapy in some  
441 countries. Even though, we assessed the associations between the plasma level of HQ products  
442 and other metabolites, we could not rule out possible drug interactions based on existing data.  
443 Based on metabolomics data, we observed that N-acetyltryptophan is significantly positively  
444 correlated with HQ products and the plasma level of N-acetyltryptophan is increased more in  
445 placebo group ( $\log_2FC=0.60$ ) than CMA group ( $\log_2FC=0.36$ ). Unfortunately, due to access  
446 limitations to the patients during the study, we were unable to sample the patients directly  
447 following the end of HQ or FP treatment. An additional mid-point analysis at 7 days may have  
448 provided additional data related to the HQ metabolites in response to the inclusion of CMA.

449 Many COVID-19 patients are at risk for detrimental outcomes due to systemic  
450 inflammatory responses referred to as a cytokine storm, a life-threatening condition is dependent  
451 on downstream processes that lead to oxidative stress, dysregulation of iron homeostasis,  
452 hypercoagulability, and thrombocytopenia (46, 47). Several studies have proposed that CMA  
453 components may effectively inhibit the production of proinflammatory molecules (e.g., IL-6,  
454 CCL-5, CXCL-8, and CXCL-10) and improve impaired mitochondrial functions by reducing  
455 oxidative damage, lipid peroxidation, and disturbed glucose tolerance (44, 48). Based on  
456 integrative analysis, we observed that CMA may interrupt the overactive immune response and  
457 early treatment with CMA may reduce the risk of progression to severe respiratory distress and  
458 lung damage.

459 In conclusion, we evaluated the efficacy and safety of CMA in combination with HQ or  
460 FP therapy in patients with mild-to-moderate COVID-19 and observed that combination therapy  
461 is safe and beneficial in patients with mild-to-moderate COVID-19. Our analysis suggests that  
462 CMA is an effective treatment for COVID-19.

463



## 464 **4.4 EXPERIMENTAL SECTION**

### 465 **Trial Design and Oversight**

466 Patients for this randomized, open-label, placebo-controlled, phase-2 study and randomized,  
467 open-label, double-blinded, phase-3 study were recruited at the Umraniye Training and Research  
468 Hospital, University of Health Sciences, Istanbul, Turkey. Written informed consent was  
469 obtained from all participants before the initiation of any trial-related procedures. The safety of  
470 the participants and the risk–benefit analysis was overseen by an independent external data-  
471 monitoring committee. The trial was conducted in accordance with Good Clinical Practice  
472 guidelines and the principles of the Declaration of Helsinki. The study was approved by the  
473 ethics committee of Istanbul Medipol University, Istanbul, Turkey, and retrospectively registered  
474 at <https://clinicaltrials.gov/with> (Clinical Trial ID: NCT04573153).

### 475 **Participants**

476 Patients were enrolled in the trial if they were over 18 years of age, had a PCR-confirmed  
477 COVID-19 test within the previous 24 h, and were in stable condition not requiring  
478 hospitalization. Chest tomography was done to rule out pneumonia. Patients who had a partial  
479 oxygen saturation below 93% and required hospitalization after diagnosis were excluded. The  
480 main characteristics of the patients are summarized in Table S2. The inclusion, exclusion, and  
481 randomization criteria are described in detail in the Supplementary Appendix.

### 482 **Randomization, Interventions, and Follow-up**

483 Patients were randomly assigned to receive CMA or placebo (3:1) and also received standard  
484 therapy with hydroxychloroquine or FP. Patient information (patient number, date of birth,  
485 initials) was entered into the web-based randomization system, and the randomization codes  
486 were entered into the electronic case report form. Except the investigator, who had password  
487 access to the system, all other clinical staff were blinded to treatment, as were the participants.

488 Treatment started on the day of diagnosis. Both placebo and CMA were provided in powdered  
489 form in identical plastic bottle containing a single dose to be dissolved in water and taken orally  
490 one dose in the morning after breakfast and one dose in the evening after dinner. Each dose of  
491 CMA contained 3.73 g L-carnitine tartrate, 2.55 g N-acetylcysteine, 1 g nicotinamide riboside  
492 chloride, and 12.35 g serine. All participants also received oral HQ or FP for 5 days. The patients  
493 were contacted by telephone daily to assess symptoms and adverse events. All patients came for  
494 a follow-up visit on Day 14. Further information is provided in the Supplementary Appendix.

### 495 **Outcomes**

496 The primary end point in the original protocol was to assess the clinical efficacy of the  
497 combination of CMA in COVID-19 patients. For the primary purpose, the proportion of patients  
498 who fully recovered from COVID-19, as demonstrated by being symptom free within the 14  
499 days of the initial diagnosis of COVID-19 was determined This was amended to include self-

500 reporting of daily symptoms and clinical status using a binomial scale (present/absent) via daily  
501 telephone visits by clinical staff. The secondary aim in this study was to evaluate the safety and  
502 tolerability of CMA and HQ or FP combination. All protocol amendments were authorized and  
503 approved by the sponsor, the institutional review board or independent ethics committee, and the  
504 pertinent regulatory authorities.

505 Number and characteristics of adverse events, serious adverse events, and treatment  
506 discontinuation due to CMA were reported from the beginning of the study to the end of the  
507 follow-up period as key safety endpoints. The changes in vital signs (systolic and diastolic blood  
508 pressures, pulse, respiratory rate, body temperature, pulse oximetry values), baseline values, and  
509 the status of treatment were recorded at day 0 and 14. A complete list of the end points is  
510 provided in the Supplementary Appendix.

### 511 **Inflammatory Proteomics**

512 Plasma levels of inflammatory proteins were determined with the Olink Inflammation panel  
513 (Olink Bioscience, Uppsala, Sweden). Briefly each sample was incubated with 92 DNA-labeled  
514 antibody pairs (proximity probes). When an antibody pair binds to its corresponding antigens,  
515 the corresponding DNA tails form an amplicon by proximity extension, which can be quantified  
516 by high-throughput, real-time PCR. Probe solution (3  $\mu$ l) was mixed with 1  $\mu$ l of sample and  
517 incubated overnight at 4°C. Then 96  $\mu$ l of extension solution containing extension enzyme and  
518 PCR reagents for the pre-amplification step was added, and the extension products were mixed  
519 with detection reagents and primers and loaded on the chip for qPCR analysis with the BioMark  
520 HD System (Fluidigm Corporation, South San Francisco, CA). To minimize inter- and intrarun  
521 variation, the data were normalized to both an internal control and an interplate control.  
522 Normalized data were expressed in arbitrary units (Normalized Protein eXpression, NPX) on a  
523 log<sub>2</sub> scale and linearized with the formula  $2^{\text{NPX}}$ . A high NPX indicates a high protein  
524 concentration. The limit of detection, determined for each of the 92 assays, was defined as three  
525 standard deviations above the negative control (background).

### 526 **Untargeted Metabolomics Analysis**

527 Plasma samples were collected on Days 0 and 14 for nontargeted metabolite profiling by  
528 Metabolon (Durham, NC). The samples were prepared with an automated system (MicroLab  
529 STAR, Hamilton Company, Reno, NV). For quality control purposes, a recovery standard was  
530 added before the first step of the extraction. To remove protein and dissociated small molecules  
531 bound to protein or trapped in the precipitated protein matrix, and to recover chemically diverse  
532 metabolites, proteins were precipitated with methanol under vigorous shaking for 2 min (Glen  
533 Mills GenoGrinder 2000) and centrifuged. The resulting extract was divided into four fractions:  
534 one each for analysis by ultraperformance liquid chromatography–tandem mass spectroscopy  
535 (UPLC-MS/MS) with positive ion-mode electrospray ionization, UPLC-MS/MS with negative  
536 ion-mode electrospray ionization, and gas chromatography–mass spectrometry; one fraction was  
537 reserved as a backup.

538 **Statistical Analysis**

539 The primary outcome was the time to recovery, defined as the time from diagnosis to the first  
540 self-report of no symptom. Recovery curves were generated with the Kaplan-Meier method.  
541 Hazard ratios and 95% confidence intervals were calculated with the Univariate and Multivariate  
542 Cox proportional-hazards regression model based on R package survival. We adjusted the age,  
543 gender, other treatment history, cigarette, alcohol and HQ/FP treatment in Multivariate Cox  
544 regression analysis. In phase-2 study, we excluded the HQ/FP factor since all the patients  
545 received HQ treatment and none of them received FP treatment. F

546 Differences in clinical measurements, proteomics, and metabolomics data were analyzed by t-  
547 test (paired t-test within group comparison). The correlations for multi-omics networks were  
548 calculated using Spearman correlation and filtered with FDR < 0.05. The analyses were  
549 performed with SciPy package in Python 3.7. Centrality analysis on network was performed  
550 using Cytoscape 3.8.2. The script used to analyze the data can be found at  
551 [https://github.com/sysmedicine/AltayEtAll\\_2020\\_Covid\\_CMA](https://github.com/sysmedicine/AltayEtAll_2020_Covid_CMA)

552

553 **ACKNOWLEDGMENTS**

554 This work was financially supported by ScandiBio Therapeutics and Knut and Alice Wallenberg  
555 Foundation. The authors would like to thank to the Plasma Profiling Facility team at SciLifeLab  
556 in Stockholm for generating the Olink data, Metabolon Inc. (Durham, USA) for generation of  
557 metabolomics data, and ChromaDex Inc. (Irvine, CA, USA) for providing NR. AM and HY  
558 acknowledge support from the PoLiMeR Innovative Training Network (Marie Skłodowska-  
559 Curie Grant Agreement No. 812616) which has received funding from the European Union's  
560 Horizon 2020 research and innovation programme.

561 **CONFLICT OF INTEREST**

562 AM, JB and MU are the founder and shareholders of ScandiBio Therapeutics and they filed a  
563 patent application on the use of CMA to treat COVID-19 patients. The other authors declare no  
564 competing interests.

565 **SUPPORTING INFORMATION**

566 Supporting Information includes Supplemental Appendix, 6 Supplementary Figures and 14  
567 Supplementary Datasets.

568

569

570 **REFERENCES**

- 571 1. A. Gupta, M. V. Madhavan, K. Sehgal, N. Nair, S. Mahajan, T. S. Sehrawat, B. Bikdeli,  
572 N. Ahluwalia, J. C. Ausiello, E. Y. Wan, D. E. Freedberg, A. J. Kirtane, S. A. Parikh, M.  
573 S. Maurer, A. S. Nordvig, D. Accili, J. M. Bathon, S. Mohan, K. A. Bauer, M. B. Leon,  
574 H. M. Krumholz, N. Uriel, M. R. Mehra, M. S. V. Elkind, G. W. Stone, A. Schwartz, D.  
575 D. Ho, J. P. Bilezikian, D. W. Landry, Extrapulmonary manifestations of COVID-19.  
576 *Nature Medicine* **26**, 1017-1032 (2020).
- 577 2. Johns Hopkins University of Medicine. (2021, January 11).
- 578 3. L. Zhu, Z.-G. She, X. Cheng, J.-J. Qin, X.-J. Zhang, J. Cai, F. Lei, H. Wang, J. Xie, W.  
579 Wang, H. Li, P. Zhang, X. Song, X. Chen, M. Xiang, C. Zhang, L. Bai, D. Xiang, M.-M.  
580 Chen, Y. Liu, Y. Yan, M. Liu, W. Mao, J. Zou, L. Liu, G. Chen, P. Luo, B. Xiao, C.  
581 Zhang, Z. Zhang, Z. Lu, J. Wang, H. Lu, X. Xia, D. Wang, X. Liao, G. Peng, P. Ye, J.  
582 Yang, Y. Yuan, X. Huang, J. Guo, B.-H. Zhang, H. Li, Association of Blood Glucose  
583 Control and Outcomes in Patients with COVID-19 and Pre-existing Type 2 Diabetes.  
584 *Cell Metabolism* **31**, 1068-1077.e1063 (2020).
- 585 4. J.-W. Song, S. M. Lam, X. Fan, W.-J. Cao, S.-Y. Wang, H. Tian, G. H. Chua, C. Zhang,  
586 F.-P. Meng, Z. Xu, J.-L. Fu, L. Huang, P. Xia, T. Yang, S. Zhang, B. Li, T.-J. Jiang, R.  
587 Wang, Z. Wang, M. Shi, J.-Y. Zhang, F.-S. Wang, G. Shui, Omics-Driven Systems  
588 Interrogation of Metabolic Dysregulation in COVID-19 Pathogenesis. *Cell Metabolism*  
589 **32**, 188-202.e185 (2020).
- 590 5. T. Thomas, D. Stefanoni, J. A. Reisz, T. Nemkov, L. Bertolone, R. O. Francis, K. E.  
591 Hudson, J. C. Zimring, K. C. Hansen, E. A. Hod, S. L. Spitalnik, A. D'Alessandro,  
592 COVID-19 infection alters kynurenine and fatty acid metabolism, correlating with IL-6  
593 levels and renal status. *JCI Insight* **5**, (2020).
- 594 6. S. R. Bornstein, R. Dalan, D. Hopkins, G. Mingrone, B. O. Boehm, Endocrine and  
595 metabolic link to coronavirus infection. *Nature Reviews Endocrinology* **16**, 297-298  
596 (2020).
- 597 7. F. Zhou, T. Yu, R. Du, G. Fan, Y. Liu, Z. Liu, J. Xiang, Y. Wang, B. Song, X. Gu, L.  
598 Guan, Y. Wei, H. Li, X. Wu, J. Xu, S. Tu, Y. Zhang, H. Chen, B. Cao, Clinical course  
599 and risk factors for mortality of adult inpatients with COVID-19 in Wuhan, China: a  
600 retrospective cohort study. *The Lancet* **395**, 1054-1062 (2020).
- 601 8. I. F.-N. Hung, K.-C. Lung, E. Y.-K. Tso, R. Liu, T. W.-H. Chung, M.-Y. Chu, Y.-Y. Ng,  
602 J. Lo, J. Chan, A. R. Tam, H.-P. Shum, V. Chan, A. K.-L. Wu, K.-M. Sin, W.-S. Leung,  
603 W.-L. Law, D. C. Lung, S. Sin, P. Yeung, C. C.-Y. Yip, R. R. Zhang, A. Y.-F. Fung, E.  
604 Y.-W. Yan, K.-H. Leung, J. D. Ip, A. W.-H. Chu, W.-M. Chan, A. C.-K. Ng, R. Lee, K.  
605 Fung, A. Yeung, T.-C. Wu, J. W.-M. Chan, W.-W. Yan, W.-M. Chan, J. F.-W. Chan, A.  
606 K.-W. Lie, O. T.-Y. Tsang, V. C.-C. Cheng, T.-L. Que, C.-S. Lau, K.-H. Chan, K. K.-W.  
607 To, K.-Y. Yuen, Triple combination of interferon beta-1b, lopinavir  
608 and ribavirin in the treatment of patients admitted to hospital with COVID-19: an open-  
609 label, randomised, phase 2 trial. *The Lancet* **395**, 1695-1704 (2020).
- 610 9. O. Altay, E. Mohammadi, S. Lam, H. Turkez, J. Boren, J. Nielsen, M. Uhlen, A.  
611 Mardinoglu, Current Status of COVID-19 Therapies and Drug Repositioning  
612 Applications. *iScience* **23**, 101303 (2020).
- 613 10. The U.S. Food and Drug Administration (FDA) (2020, August 28).
- 614 11. University of South Carolina, Regulatory updates on China, February 2020. (2020,  
615 September 18).

- 616 12. R. Miller, A. R. Wentzel, G. A. Richards, COVID-19: NAD(+) deficiency may  
617 predispose the aged, obese and type2 diabetics to mortality through its effect on SIRT1  
618 activity. *Med Hypotheses* **144**, 110044-110044 (2020).
- 619 13. F. Silvagno, A. Vernone, G. P. Pescarmona, The Role of Glutathione in Protecting  
620 against the Severe Inflammatory Response Triggered by COVID-19. *Antioxidants (Basel)*  
621 **9**, 624 (2020).
- 622 14. E. H. Ma, G. Bantug, T. Griss, S. Condotta, R. M. Johnson, B. Samborska, N. Mainolfi,  
623 V. Suri, H. Guak, M. L. Balmer, M. J. Verway, T. C. Raissi, H. Tsui, G. Boukhaled, S.  
624 Henriques da Costa, C. Frezza, C. M. Krawczyk, A. Friedman, M. Manfredi, M. J.  
625 Richer, C. Hess, R. G. Jones, Serine Is an Essential Metabolite for Effector T Cell  
626 Expansion. *Cell Metabolism* **25**, 345-357 (2017).
- 627 15. M. Mata, I. Sarrion, M. Armengot, C. Carda, I. Martinez, J. A. Melero, J. Cortijo,  
628 Respiratory syncytial virus inhibits ciliogenesis in differentiated normal human bronchial  
629 epithelial cells: effectiveness of N-acetylcysteine. *PLoS One* **7**, e48037-e48037 (2012).
- 630 16. Q. Zhang, Y. Ju, Y. Ma, T. Wang, N-acetylcysteine improves oxidative stress and  
631 inflammatory response in patients with community acquired pneumonia: A randomized  
632 controlled trial. *Medicine (Baltimore)* **97**, e13087-e13087 (2018).
- 633 17. Y. Zhang, S. Ding, C. Li, Y. Wang, Z. Chen, Z. Wang, Effects of N-acetylcysteine  
634 treatment in acute respiratory distress syndrome: A meta-analysis. *Exp Ther Med* **14**,  
635 2863-2868 (2017).
- 636 18. S. Sharma, A. Aramburo, R. Rafikov, X. Sun, S. Kumar, P. E. Oishi, S. A. Datar, G.  
637 Raff, K. Xoinis, G. Kalkan, S. Fratz, J. R. Fineman, S. M. Black, L-Carnitine preserves  
638 endothelial function in a lamb model of increased pulmonary blood flow. *Pediatric*  
639 *Research* **74**, 39-47 (2013).
- 640 19. G. Malaguarnera, M. Pennisi, C. Gagliano, M. Vacante, M. Malaguarnera, S. Salomone,  
641 F. Drago, G. Bertino, F. Caraci, G. Nunnari, M. Malaguarnera, Acetyl-L-Carnitine  
642 Supplementation During HCV Therapy With Pegylated Interferon- $\alpha$  2b Plus Ribavirin:  
643 Effect on Work Performance; A Randomized Clinical Trial. *Hepat Mon* **14**, e11608-  
644 e11608 (2014).
- 645 20. A. Balasubramanyam, I. Coraza, E. O. Smith, L. W. Scott, P. Patel, D. Iyer, A. A. Taylor,  
646 T. P. Giordano, R. V. Sekhar, P. Clark, E. Cuevas-Sanchez, S. Kamble, C. M. Ballantyne,  
647 H. J. Pownall, Combination of niacin and fenofibrate with lifestyle changes improves  
648 dyslipidemia and hypoadiponectinemia in HIV patients on antiretroviral therapy: results  
649 of "heart positive," a randomized, controlled trial. *J Clin Endocrinol Metab* **96**, 2236-  
650 2247 (2011).
- 651 21. A. E. Rodriguez, G. S. Ducker, L. K. Billingham, C. A. Martinez, N. Mainolfi, V. Suri,  
652 A. Friedman, M. G. Manfredi, S. E. Weinberg, J. D. Rabinowitz, N. S. Chandel, Serine  
653 Metabolism Supports Macrophage IL-1 $\beta$  Production. *Cell Metabolism* **29**, 1003-  
654 1011.e1004 (2019).
- 655 22. X. Zhou, H. Zhang, L. He, X. Wu, Y. Yin, Long-Term l-Serine Administration Reduces  
656 Food Intake and Improves Oxidative Stress and Sirt1/NF $\kappa$ B Signaling in the  
657 Hypothalamus of Aging Mice. *Front Endocrinol (Lausanne)* **9**, 476 (2018).
- 658 23. D. Conze, C. Brenner, C. L. Kruger, Safety and Metabolism of Long-term Administration  
659 of NIAGEN (Nicotinamide Riboside Chloride) in a Randomized, Double-Blind, Placebo-  
660 controlled Clinical Trial of Healthy Overweight Adults. *Sci Rep* **9**, 9772 (2019).



- 661 24. A. Mardinoglu, D. Ural, M. Zeybel, H. H. Yuksel, M. Uhlén, J. Borén, The Potential Use  
662 of Metabolic Cofactors in Treatment of NAFLD. *Nutrients* **11**, 1578 (2019).
- 663 25. S. A. J. Trammell, M. S. Schmidt, B. J. Weidemann, P. Redpath, F. Jaksch, R. W.  
664 Dellinger, Z. Li, E. D. Abel, M. E. Migaud, C. Brenner, Nicotinamide riboside is  
665 uniquely and orally bioavailable in mice and humans. *Nature Communications* **7**, 12948  
666 (2016).
- 667 26. A. Mardinoglu, E. Bjornson, C. Zhang, M. Klevstig, S. Soderlund, M. Stahlman, M.  
668 Adiels, A. Hakkarainen, N. Lundbom, M. Kilicarslan, B. M. Hallstrom, J. Lundbom, B.  
669 Verges, P. H. Barrett, G. F. Watts, M. J. Serlie, J. Nielsen, M. Uhlen, U. Smith, H. U.  
670 Marschall, M. R. Taskinen, J. Boren, Personal model-assisted identification of NAD(+)  
671 and glutathione metabolism as intervention target in NAFLD. *Mol Syst Biol* **13**, 916  
672 (2017).
- 673 27. Y. S. Elhassan, K. Kluckova, R. S. Fletcher, M. S. Schmidt, A. Garten, C. L. Doig, D. M.  
674 Cartwright, L. Oakey, C. V. Burley, N. Jenkinson, M. Wilson, S. J. E. Lucas, I. Akerman,  
675 A. Seabright, Y. C. Lai, D. A. Tennant, P. Nightingale, G. A. Wallis, K. N.  
676 Manolopoulos, C. Brenner, A. Philp, G. G. Lavery, Nicotinamide Riboside Augments the  
677 Aged Human Skeletal Muscle NAD(+) Metabolome and Induces Transcriptomic and  
678 Anti-inflammatory Signatures. *Cell Rep* **28**, 1717-1728.e1716 (2019).
- 679 28. A. Mardinoglu, J. Boren, U. Smith, M. Uhlen, J. Nielsen, Systems biology in hepatology:  
680 approaches and applications. *Nature Reviews Gastroenterology & Hepatology* **15**, 365-  
681 377 (2018).
- 682 29. C. Zhang, E. Bjornson, M. Arif, A. Tebani, A. Lovric, R. Benfeitas, M. Ozcan, K.  
683 Juszczak, W. Kim, J. T. Kim, G. Bidkhori, M. Ståhlman, P.-O. Bergh, M. Adiels, H.  
684 Turkez, M.-R. Taskinen, J. Bosley, H.-U. Marschall, J. Nielsen, M. Uhlén, J. Borén, A.  
685 Mardinoglu, The acute effect of metabolic cofactor supplementation: a potential  
686 therapeutic strategy against non-alcoholic fatty liver disease. *Mol Syst Biol* **16**, e9495-  
687 e9495 (2020).
- 688 30. F. Coperchini, L. Chiovato, L. Croce, F. Magri, M. Rotondi, The cytokine storm in  
689 COVID-19: An overview of the involvement of the chemokine/chemokine-receptor  
690 system. *Cytokine Growth Factor Rev* **53**, 25-32 (2020).
- 691 31. B. Shen, X. Yi, Y. Sun, X. Bi, J. Du, C. Zhang, S. Quan, F. Zhang, R. Sun, L. Qian, W.  
692 Ge, W. Liu, S. Liang, H. Chen, Y. Zhang, J. Li, J. Xu, Z. He, B. Chen, J. Wang, H. Yan,  
693 Y. Zheng, D. Wang, J. Zhu, Z. Kong, Z. Kang, X. Liang, X. Ding, G. Ruan, N. Xiang, X.  
694 Cai, H. Gao, L. Li, S. Li, Q. Xiao, T. Lu, Y. Zhu, H. Liu, H. Chen, T. Guo, Proteomic  
695 and Metabolomic Characterization of COVID-19 Patient Sera. *Cell* **182**, 59-72.e15  
696 (2020).
- 697 32. C. Benedetti, M. Waldman, G. Zaza, L. V. Riella, P. Cravedi, COVID-19 and the  
698 Kidneys: An Update. *Front Med (Lausanne)* **7**, 423 (2020).
- 699 33. J. K. Haukka, N. Sandholm, C. Forsblom, J. E. Cobb, P.-H. Groop, E. Ferrannini,  
700 Metabolomic Profile Predicts Development of Microalbuminuria in Individuals with  
701 Type 1 Diabetes. *Scientific Reports* **8**, 13853 (2018).
- 702 34. N. S. Heaton, G. Randall, Multifaceted roles for lipids in viral infection. *Trends*  
703 *Microbiol* **19**, 368-375 (2011).
- 704 35. M. A. Hundt, Y. Deng, M. M. Ciarleglio, M. H. Nathanson, J. K. Lim, Abnormal Liver  
705 Tests in COVID-19: A Retrospective Observational Cohort Study of 1827 Patients in a  
706 Major U.S. Hospital Network. *Hepatology*, (2020).

- 707 36. K. P. Patel, P. A. Patel, R. R. Vunnam, A. T. Hewlett, R. Jain, R. Jing, S. R. Vunnam,  
708 Gastrointestinal, hepatobiliary, and pancreatic manifestations of COVID-19. *J Clin Virol*  
709 **128**, 104386 (2020).
- 710 37. W. D. Redd, J. C. Zhou, K. E. Hathorn, T. R. McCarty, A. N. Bazarbashi, C. C.  
711 Thompson, L. Shen, W. W. Chan, Prevalence and Characteristics of Gastrointestinal  
712 Symptoms in Patients With Severe Acute Respiratory Syndrome Coronavirus 2 Infection  
713 in the United States: A Multicenter Cohort Study. *Gastroenterology* **159**, 765-767.e762  
714 (2020).
- 715 38. A. Bertolini, I. P. van de Peppel, F. A. J. A. Bodewes, H. Moshage, A. Fantin, F. Farinati,  
716 R. Fiorotto, J. W. Jonker, M. Strazzabosco, H. J. Verkade, G. Peserico, Abnormal liver  
717 function tests in COVID-19 patients: relevance and potential pathogenesis. *Hepatology*  
718 **n/a**.
- 719 39. W.-C. Sim, H.-Q. Yin, H.-S. Choi, Y.-J. Choi, H. C. Kwak, S.-K. Kim, B.-H. Lee, L-  
720 Serine Supplementation Attenuates Alcoholic Fatty Liver by Enhancing Homocysteine  
721 Metabolism in Mice and Rats. *The Journal of Nutrition* **145**, 260-267 (2014).
- 722 40. K. Salic, E. Gart, F. Seidel, L. Verschuren, M. Caspers, W. van Duyvenvoorde, K. E.  
723 Wong, J. Keijer, I. Bobeldijk-Pastorova, P. Y. Wielinga, R. Kleemann, Combined  
724 Treatment with L-Carnitine and Nicotinamide Riboside Improves Hepatic Metabolism  
725 and Attenuates Obesity and Liver Steatosis. *Int J Mol Sci* **20**, (2019).
- 726 41. T. M. Hagen, R. T. Ingersoll, C. M. Wehr, J. Lykkesfeldt, V. Vinarsky, J. C.  
727 Bartholomew, M. H. Song, B. N. Ames, Acetyl-L-carnitine fed to old rats partially  
728 restores mitochondrial function and ambulatory activity. *Proc Natl Acad Sci U S A* **95**,  
729 9562-9566 (1998).
- 730 42. S. A. J. Trammell, B. J. Weidemann, A. Chadda, M. S. Yorek, A. Holmes, L. J. Coppey,  
731 A. Obrosov, R. H. Kardon, M. A. Yorek, C. Brenner, Nicotinamide Riboside Opposes  
732 Type 2 Diabetes and Neuropathy in Mice. *Scientific Reports* **6**, 26933 (2016).
- 733 43. P. Bieganowski, C. Brenner, Discoveries of nicotinamide riboside as a nutrient and  
734 conserved NRK genes establish a Preiss-Handler independent route to NAD<sup>+</sup> in fungi  
735 and humans. *Cell* **117**, 495-502 (2004).
- 736 44. C. D. Heer, D. J. Sanderson, Y. M. O. Alhammad, M. S. Schmidt, S. A. J. Trammell, S.  
737 Perlman, M. S. Cohen, A. R. Fehr, C. Brenner, Coronavirus and PARP expression  
738 dysregulate the NAD Metabolome: a potentially actionable component of innate  
739 immunity. *bioRxiv*, 2020.2004.2017.047480 (2020).
- 740 45. S. E. Airhart, L. M. Shireman, L. J. Risler, G. D. Anderson, G. A. Nagana Gowda, D.  
741 Raftery, R. Tian, D. D. Shen, K. D. O'Brien, An open-label, non-randomized study of the  
742 pharmacokinetics of the nutritional supplement nicotinamide riboside (NR) and its effects  
743 on blood NAD<sup>+</sup> levels in healthy volunteers. *PLoS One* **12**, e0186459 (2017).
- 744 46. J. Saleh, C. Peyssonnaud, K. K. Singh, M. Edeas, Mitochondria and microbiota  
745 dysfunction in COVID-19 pathogenesis. *Mitochondrion* **54**, 1-7 (2020).
- 746 47. J. B. Moore, C. H. June, Cytokine release syndrome in severe COVID-19. *Science* **368**,  
747 473-474 (2020).
- 748 48. A. Sahebnaasagh, F. Saghafi, R. Avan, A. Khoshi, M. Khataminia, M. Safdari, S.  
749 Habtemariam, H. R. Ghaleno, S. M. Nabavi, The prophylaxis and treatment potential of  
750 supplements for COVID-19. *Eur J Pharmacol*, 173530-173530 (2020).

752 **FIGURE LEGENDS**

753 **Figure 1. The effect of CMA on the symptoms of COVID-19 patients in phase-2 clinical**  
754 **trial**

755 **A)** The effect of the CMA in COVID-19 patients is tested in a randomized, controlled, open-  
756 label, placebo-controlled phase 2 clinical study. Study design for testing the effect of CMA is  
757 presented. **B)** Based on Kaplan-Meier analysis, it is shown that CMA accelerate the recovery of  
758 the COVID-19 patients. Number of patients reporting COVID-19 symptoms are reported in the  
759 Table S2. **C)** Multivariate Cox regression analysis of CMA treatment in phase-2 clinical trial.

760 **Figure 2. The effect of CMA on the symptoms of COVID-19 patients in phase-3 clinical**  
761 **trial**

762 **A)** The effect of the CMA in COVID-19 patients is tested in a randomized, controlled, double-  
763 blinded, placebo-controlled phase 3 clinical study. Study design for testing the effect of CMA is  
764 presented. **B)** Based on Kaplan-Meier analysis, it is shown that CMA accelerate the recovery of  
765 the COVID-19 patients. Number of patients reporting COVID-19 symptoms are reported in the  
766 Table S2. **C)** Multivariate Cox regression analysis of CMA treatment in phase-3 clinical trial.

767 **Figure 3. The effect of the CMA on clinical variables**

768 **A)** Heatmap shows log<sub>2</sub>FC based alterations of the clinical variables, which are compared before  
769 and after the administration of CMA in both active and placebo groups. Asterisks indicate  
770 statistical significance based on Student's t test. P value <0.05. The level of clinical variables  
771 including ALT (**B**), LDH (**C**), creatinine (**D**) and glucose (**E**) is presented in the CMA and  
772 placebo groups. These clinical parameters are significantly improved due to the administration of  
773 CMA after 14 days. The decrease in the recovery of the patients have been supported by the  
774 improvement in clinical variables and the metabolic health status of the patients.

775 **Figure 4. CMA and hydroquinone sulfate alter the global metabolism of the patients**

776 **A)** The plasma level of individual metabolic activators including serine, carnitine, nicotinamide  
777 riboside, and cysteine as well as **B)** their association with the 10 most significantly correlated  
778 plasma metabolites are presented. **C)** The plasma level of the degradation products of  
779 hydroxychloroquine including hydroquinone sulfate and 2-methoxyhydroquinone sulfate (1) as  
780 well as **D)** their association with the 10 most significantly correlated plasma metabolites are  
781 presented. Asterisks indicate statistical significance based on Spearman correlation analysis.  
782 FDR value <0.01.

783 **Figure 5. CMA effect the plasma level of inflammation related proteins**

784 Association between inflammation related proteins that are significantly different between the  
785 CMA and placebo groups on Days 0 and Day 14. **A)** Heatmap shows log<sub>2</sub>FC based alterations  
786 and clustering between significant proteins on Day 14 vs Day 0 in the CMA and placebo groups.  
787 Asterisks indicate statistical significance based on paired Student's t test. FDR value: < 0.01. **B)**

788 Heatmap shows the correlation and clustering between the plasma level all inflammation related  
789 proteins and plasma levels of the individual constituents of CMA (including serine, carnitine,  
790 nicotinamide riboside, and cysteine). Asterisks indicate statistical significance based on  
791 Spearman correlation analysis. p value: < 0.05. Log2FC: log<sub>2</sub>(fold change).

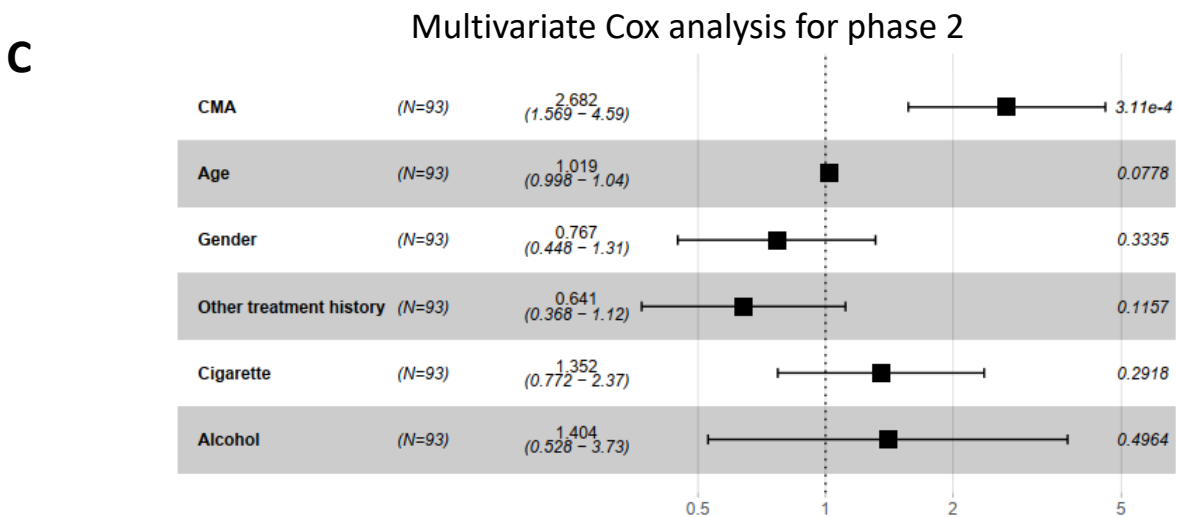
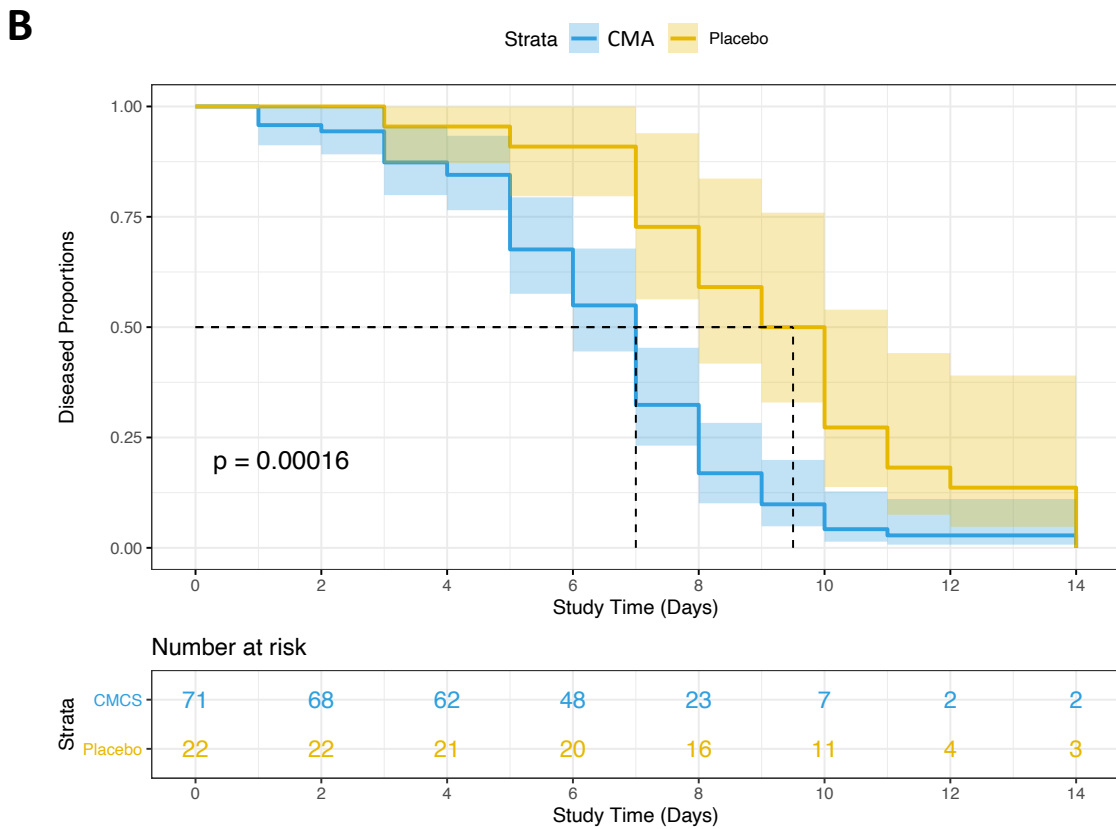
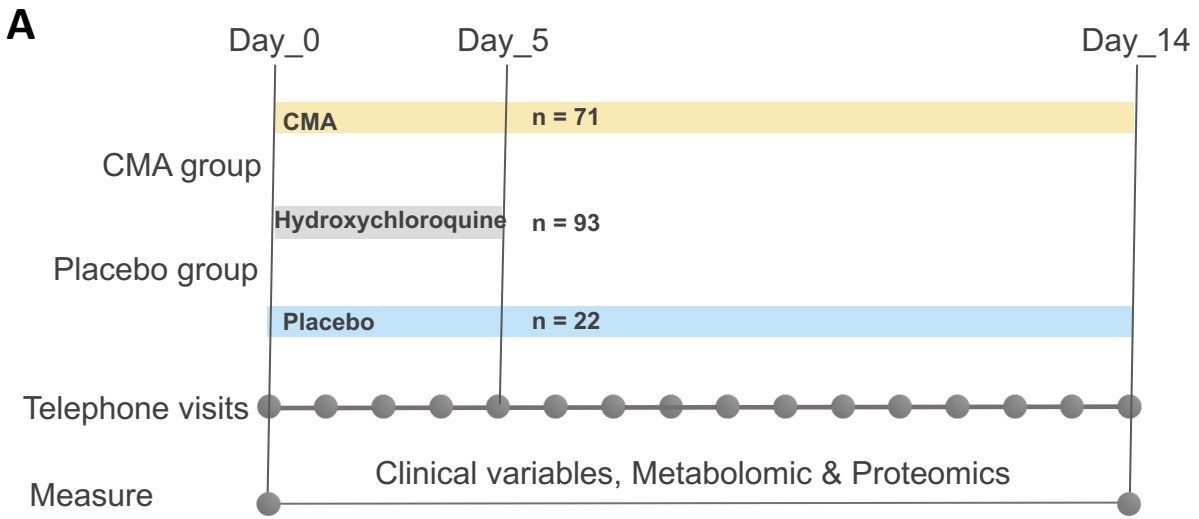
792 **Figure 6. CMA effect the plasma level of amino acids and improve metabolic health**

793 Plasma level of amino acids that are significantly different on Days 14 vs Day 0 in the CMA and  
794 placebo groups. **A)** Venn-diagram representing the number of identified amino acids that are  
795 significantly different on Days 14 vs Day 0 in the CMA and placebo groups. The intersection  
796 represents amino acids that were altered in both groups. Statistical significance based on paired  
797 Student's t test. FDR value: < 0.001. Association between the plasma level of significantly  
798 different amino acids **B)** in both groups (n=25); **C)** only in CMA group (n=70) and **D)** only in  
799 placebo group (n=6) on Day 14 vs Day 0. Heatmap shows log<sub>2</sub>FC based alterations in the amino  
800 acids and asterisks indicate statistical significance based on paired Student's t test. FDR value: <  
801 0.001. Log<sub>2</sub>FC, log<sub>2</sub>(fold change).

802 **Figure 7. Integrated network analysis for revealing the effect of CMA on patients**

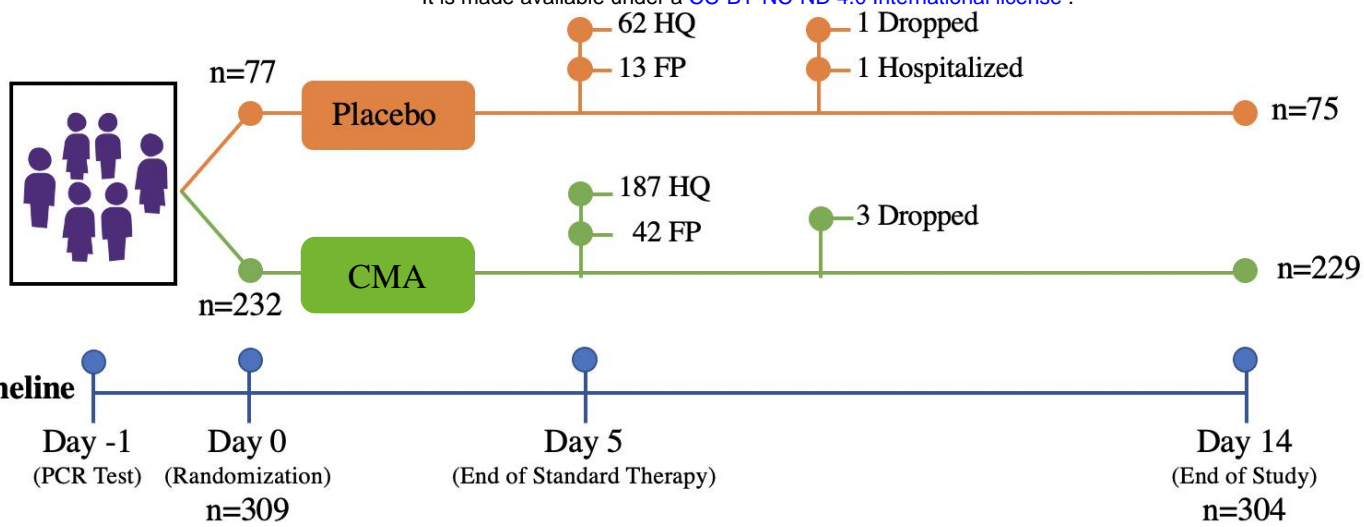
803 Association between the plasma level of clinical variables including ALT, AST, LDH, TGs and  
804 hemoglobin with plasma level of all inflammation related proteins. Heatmap shows log<sub>2</sub>FC  
805 based alterations and clustering between the plasma level of clinical variables including ALT,  
806 AST, LDH, TG and hemoglobin with plasma level of **A)** all metabolites and **B)** all inflammation  
807 related proteins. Asterisks indicate statistical significance based on paired Student's t test. p  
808 value: < 0.05. Log<sub>2</sub>FC, log<sub>2</sub>(fold change); AST, Aspartate aminotransferase; ALT, Alanine  
809 transaminase; LDH, Lactate dehydrogenase; TGs, Triglycerides. **C)** Neighbors of the metabolic  
810 activators including serine, carnitine, nicotinamide riboside, and cysteine as well as degradation  
811 products of hydroxychloroquine including hydroquinone sulfate and 2-methoxyhydroquinone  
812 sulfate (1) based on the multi-omics network analysis. Only analytes that are significantly altered  
813 in CMA Day 14 vs Day 0 are highlighted. Full networks can be found in iNetModels  
814 (<http://inetmodels.com>).

815

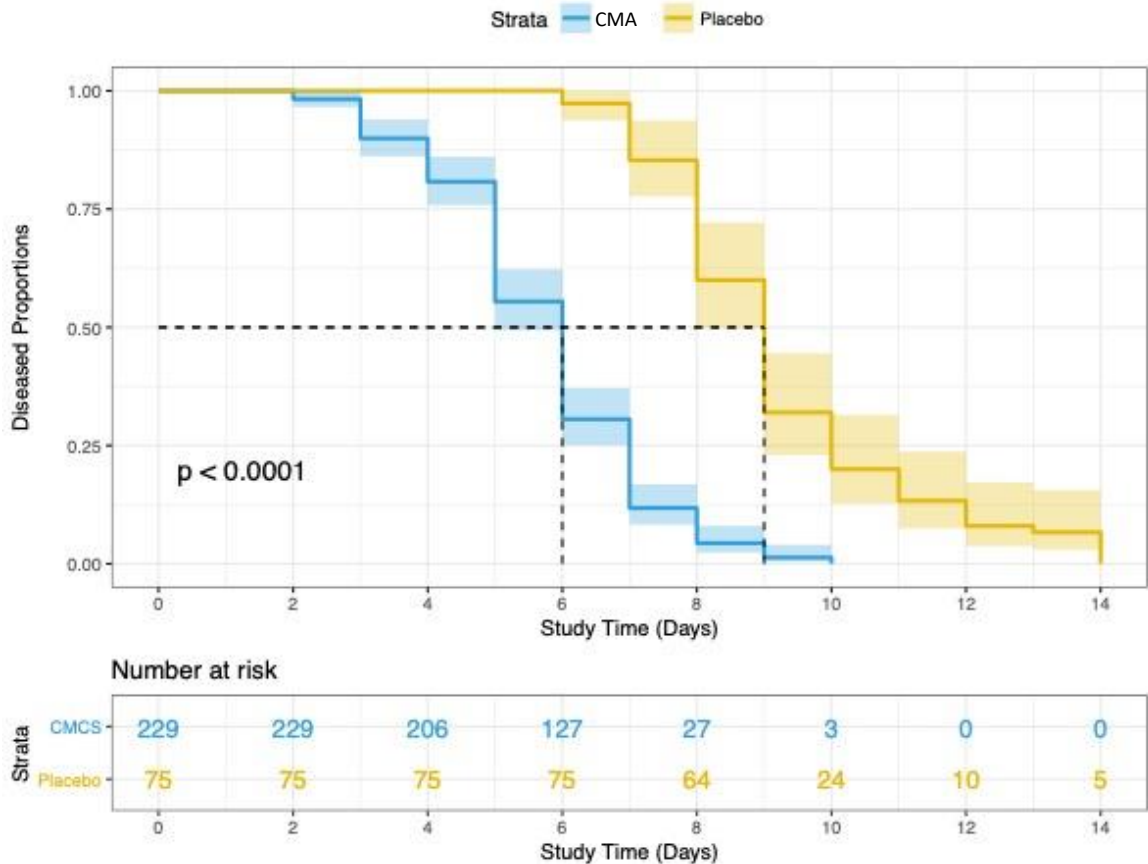




**A**

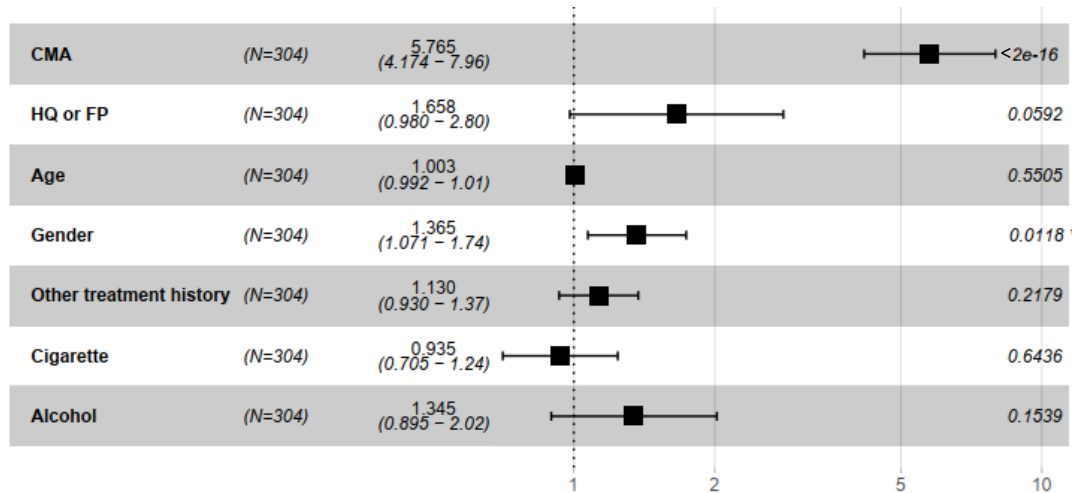


**B**



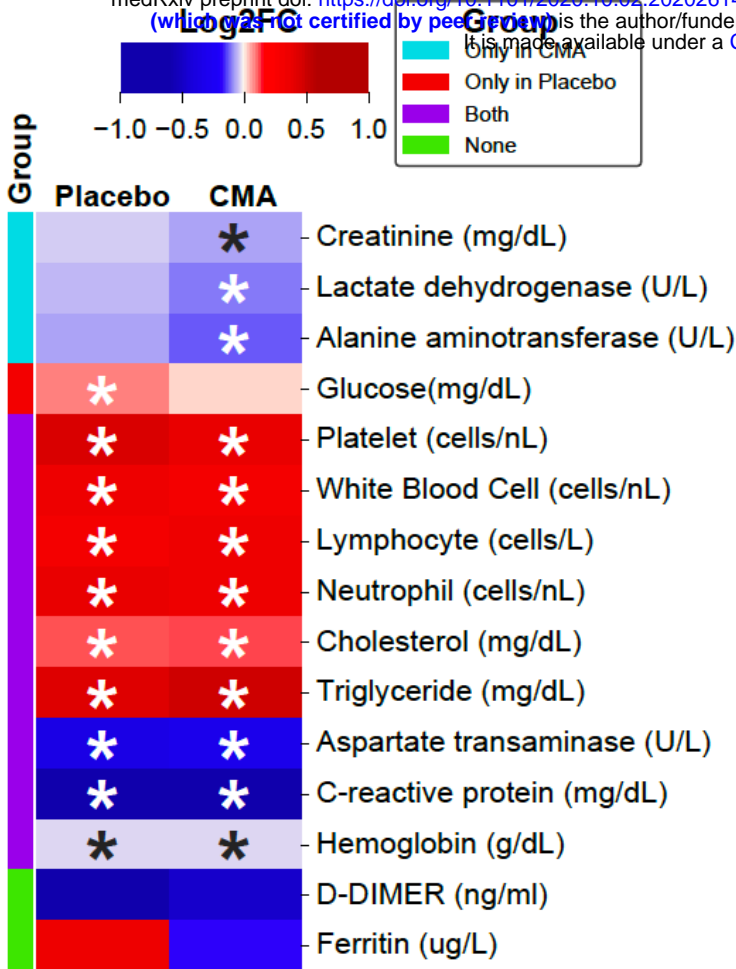
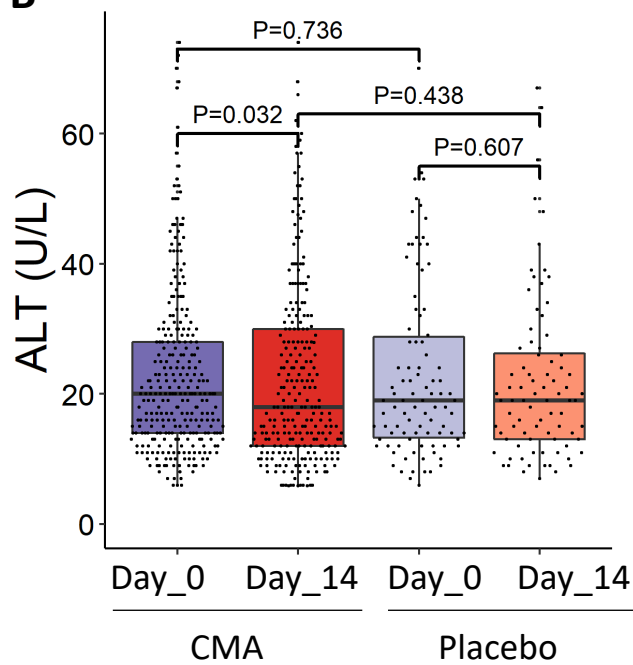
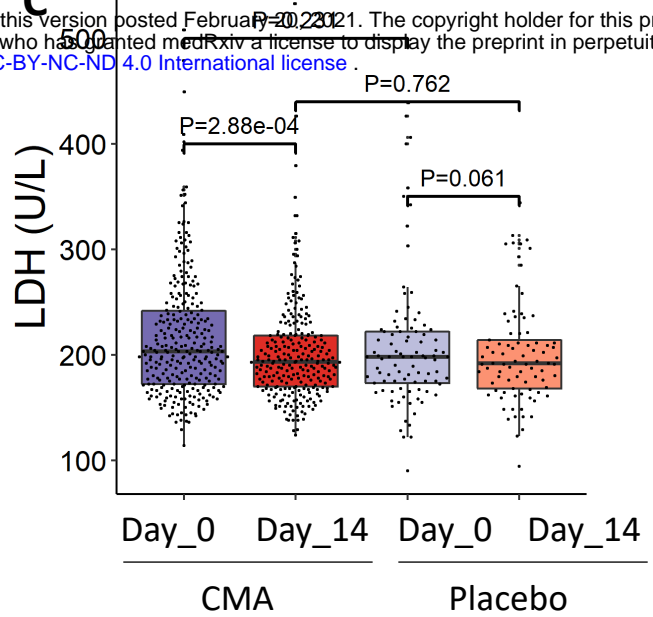
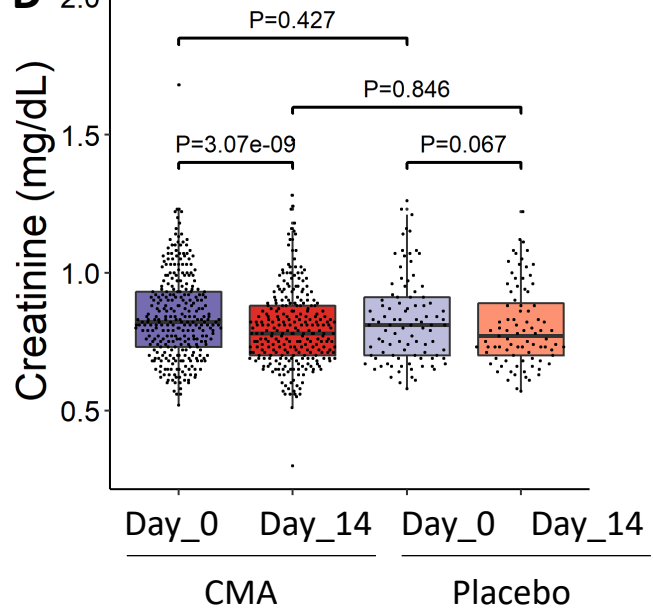
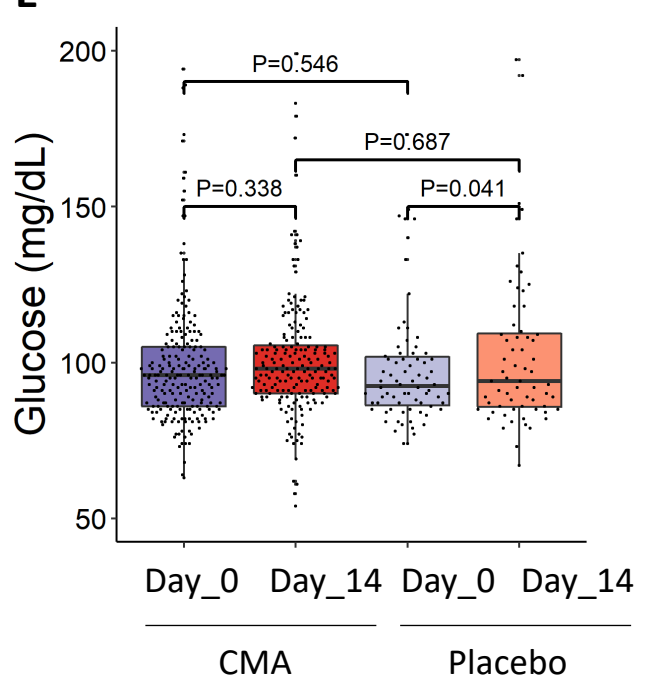
**C**

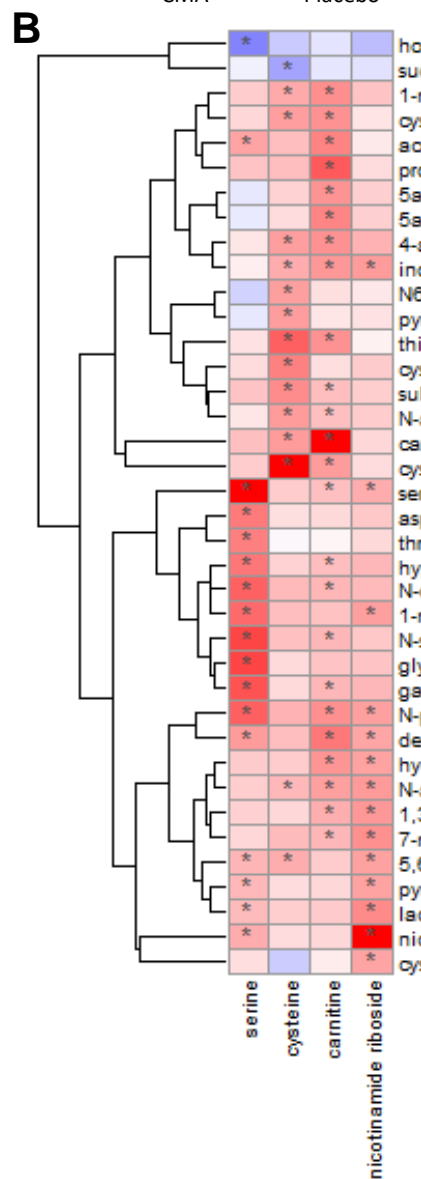
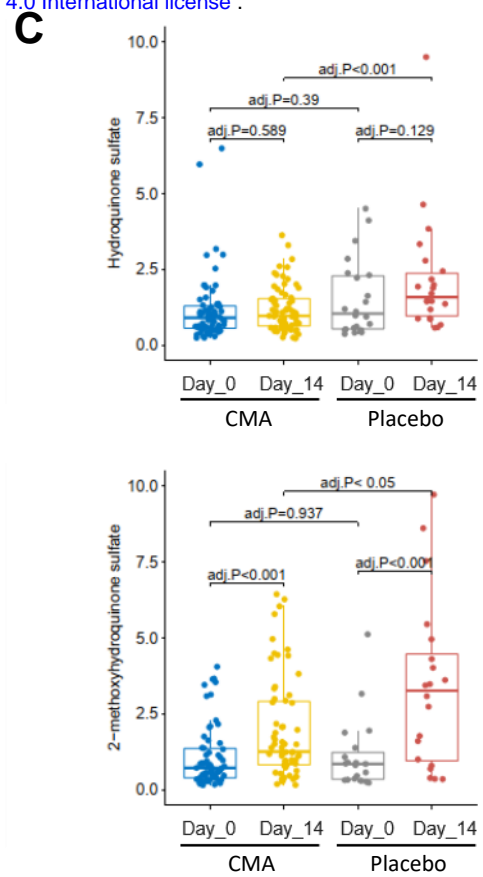
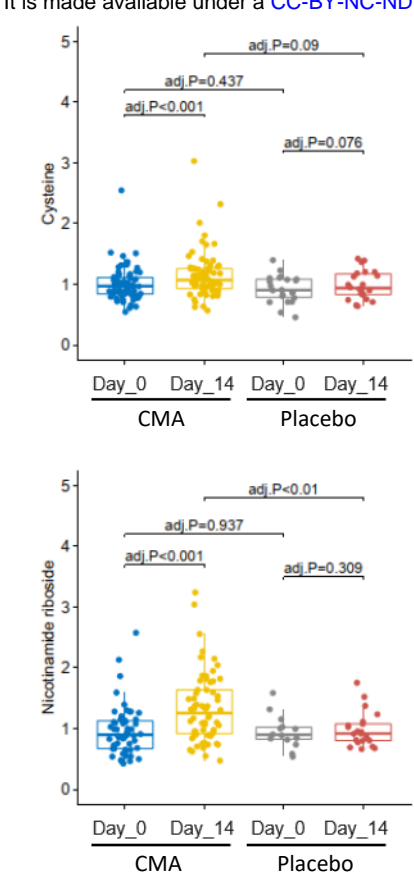
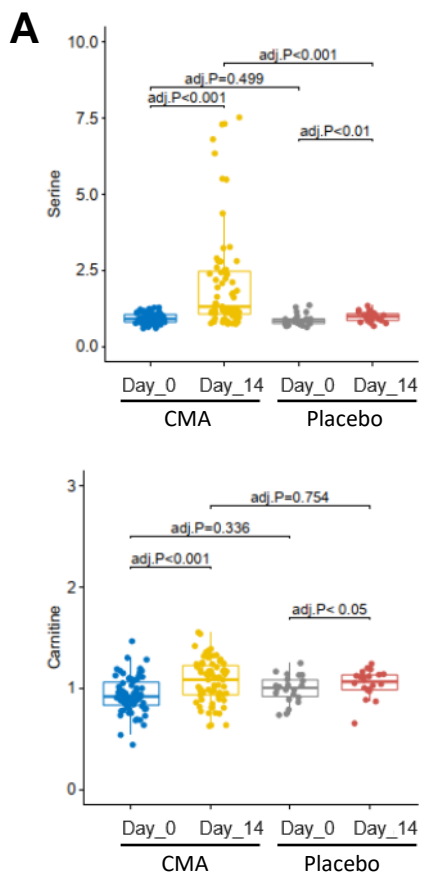
**Multivariate Cox analysis for phase 3**



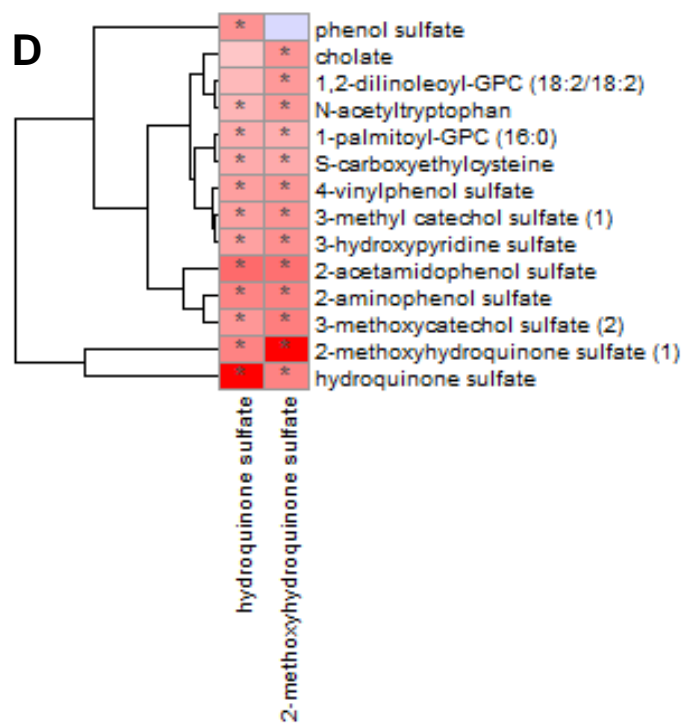
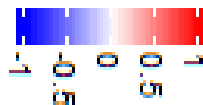
**A**

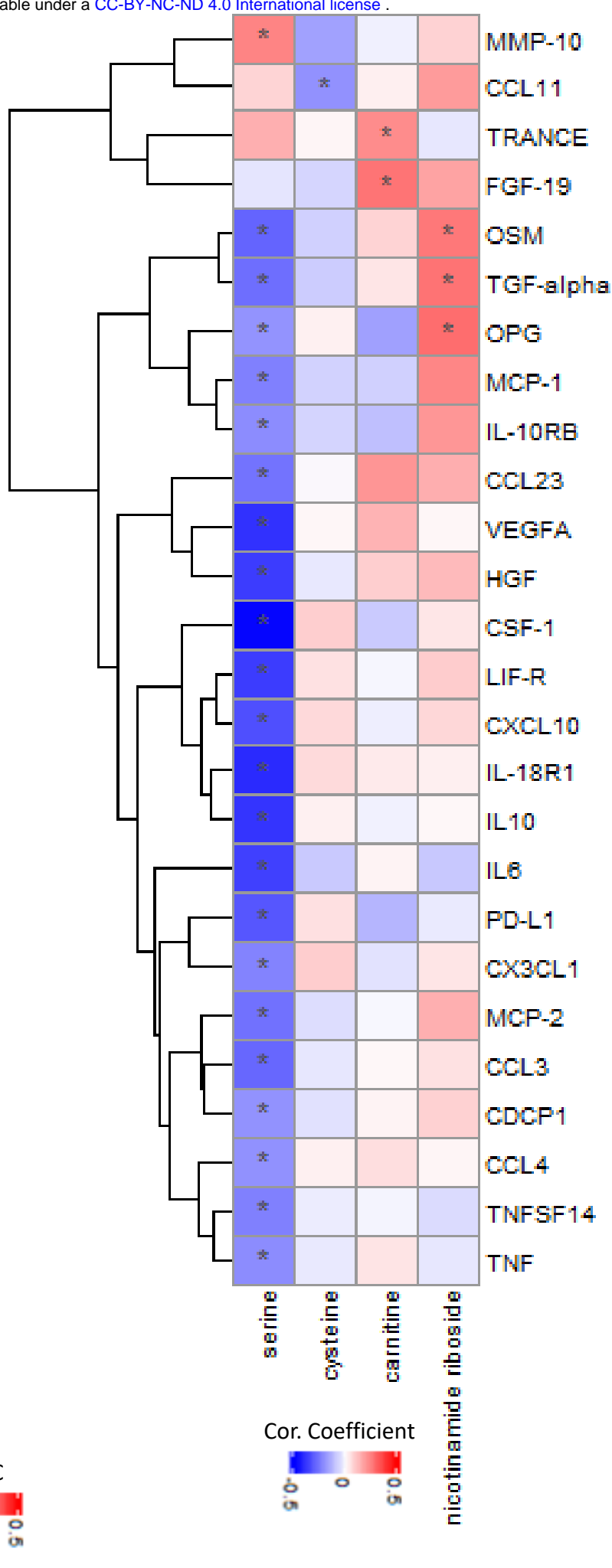
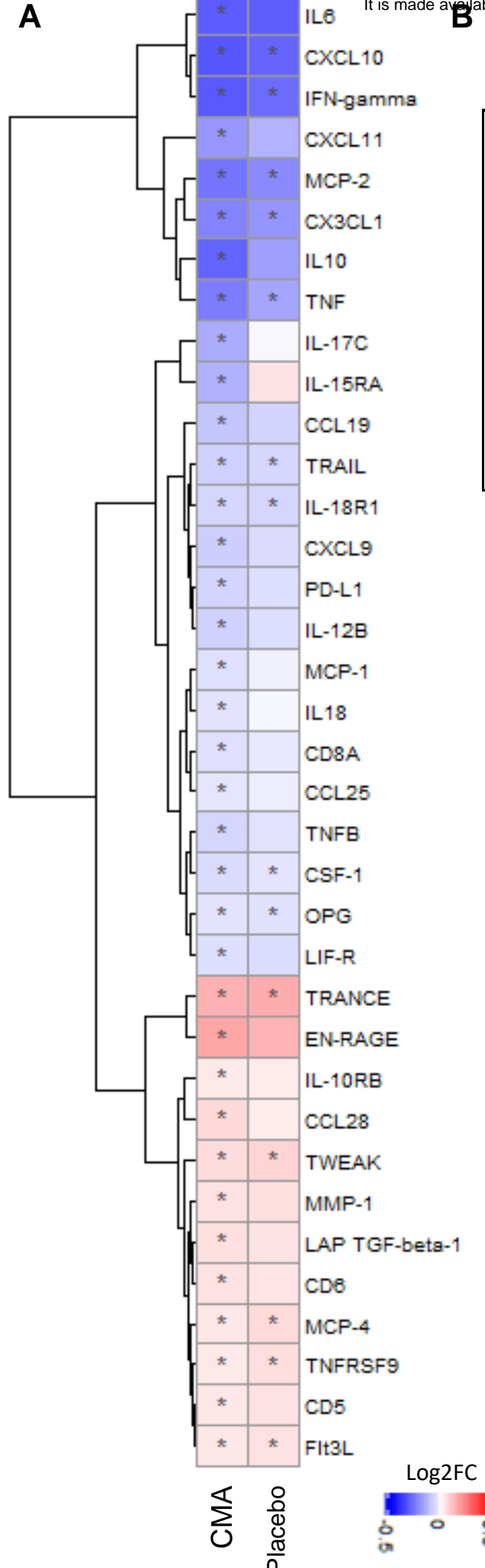
medRxiv preprint doi: <https://doi.org/10.1101/2020.10.02.20202614>; this version posted February 20, 2021. The copyright holder for this preprint (which was not certified by peer review) is the author/funder, who has granted medRxiv a license to display the preprint in perpetuity. It is made available under a [CC-BY-NC-ND 4.0 International license](https://creativecommons.org/licenses/by-nc-nd/4.0/).

**B****C****D****E**

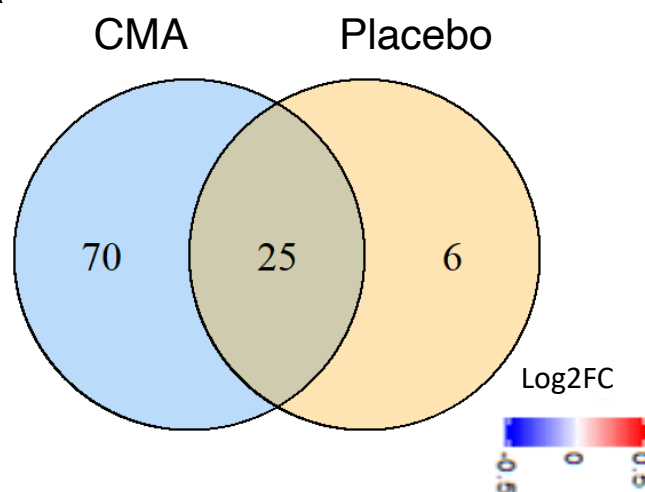


Cor. Coefficient

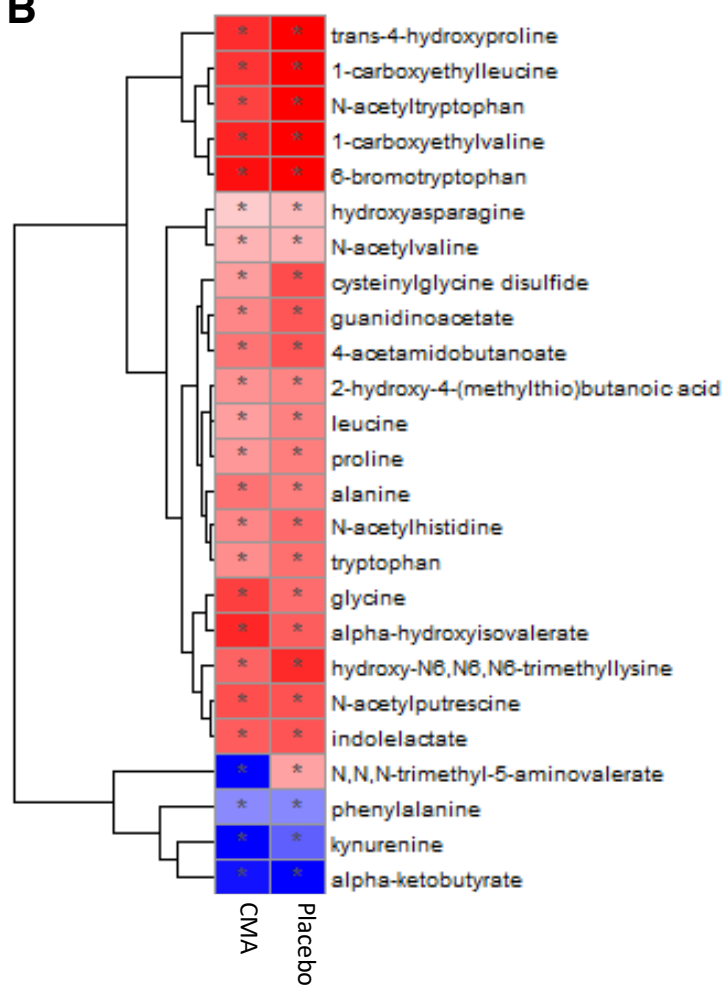




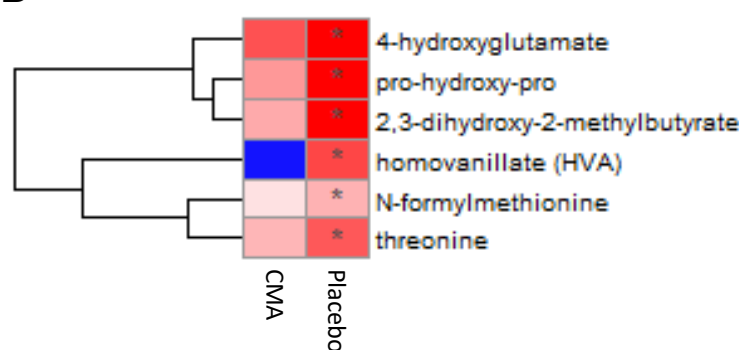
**A**



**B**



**D**



**C**

