

Clinical validation of the quantitative Siemens SARS-CoV-2 spike IgG assay (sCOVG) reveals improved sensitivity and a good correlation with virus neutralization titers

SUPPLEMENTAL MATERIAL

Supplemental Tables

Supplemental Table S1. Characteristics of 134 COVID-19 patients (sCOVG - neutralisation assay correlation cohort)

		Absolute	%
Number	n	134	100%
Disease severity	Outpatient	26	19%
	General ward	68	51%
	ICU	31	23%
	Not known	9	7%
Age (years)	min	20	
	max	88	
	median (IQR)	57 (50- 68)	
Sex	female	58	43%
	male	76	57%
Symptom onset known	yes	120	90%
	no	14	10%
Date of first positive PCR known	yes	122	91%
	no	12	9%
Time between symptom onset and PCR (days)^a	median (IQR)	5 (2-8)	
Time between disease onset and blood draw (days)^b	median (IQR)	63 (54-74)	

^a Refers to the first positive SARS-CoV-2 PCR of the patient; ^b refers to the representative sample used in the sensitivity analysis. Abbreviations: IQR, interquartile range, PCR, polymerase chain reaction.

Supplemental Table S2. Attributes for the two Siemens SARS-CoV-2 IgG assays as given by the manufacturer's package inserts.

Attribute	SARS-CoV-2 IgG (sCOVG)	SARS-CoV-2 IgG (COV2G)
Manufacturer	Siemens	Siemens
Version of the package insert	October 2020	June 2020
CE-IVD status	Conform	Conform
EUA status	Granted	Granted
Method	CLIA	CLIA
Platform	ADVIA Centaur XP ^a , XPT	ADVIA Centaur XP ^a , XPT
Specimen type	Serum, plasma (Li-heparin), venipuncture or capillary puncture	Serum, plasma (Li-heparin, K-EDTA)
Sample volume (without dead volume)	40 µl	10 µl
Detected antibodies	IgG	IgG
Solid-phase antigen target	RBD of the S1 protein	RBD of the S1 protein
Result calculation	Index	Index
Interpretation	<1,0: negative ≥1,0: positive 1.00 Index value = 1.00 IU/ml	<1,0: negative ≥1,0: positive
Diagnostic specificity*	99.90% (99.64-99.99, n=1,995)	99.89% (99.61-99.99, n=1,831)
Diagnostic sensitivity*	<i>Days after first PCR-positivity</i> 0-6: 50.82% (45.58-56.03, n=368) 7-13: 82.47% (76.38-87.55, n=194) 14-20: 91.14% (82.59-96.36, n=79) ≥21: 96.41% (92.74-98.54%, n=195)	<i>Days after first PCR-positivity</i> 0-6: 53.49% (42.41-64.23, n=86) 7-13: 93.44% (84.05-98.18, n=61) ≥14: 100.00% (91.59-100.00%), n=42
Accuracy	Within-day: 2.6-5.8% Between-day: 3.9-6.7%	Within-day: 2.0-4.6% Between-day: 2.8-6.1%

In brackets 95% confidence intervals are shown. Abbreviations: CE-IVD, European Conformity - In Vitro Diagnostic Medical Device; CLIA, chemiluminescence immunoassay; EUA: Emergency Use Authorization; K, potassium; Li, Lithium; n: number of samples tested; RBD: receptor-binding domain; S1: Spike 1 protein of the SARS-CoV-2 virus; ^a indicates the platform used in our study.

Supplemental Table S3. Measurements of the immunoglobulin formulation Privigen®, undiluted and 1:50 diluted.

Privigen	Siemens SARS-CoV-2 IgG (sCOVG)	Siemens SARS-CoV-2 IgG (COV2G)
Undiluted	1.28	1.09
1:50, negative serum	0.00	0.01
1:50, sodium chloride	0.00	0.23

Data indicate the respective results of the raw data indexes of the tests. Privigen® was diluted with negative pre-pandemic serum or sodium chloride, respectively.

Supplemental Table S4. Diagnostic sensitivity of the two assays stratified for disease course, age and gender.

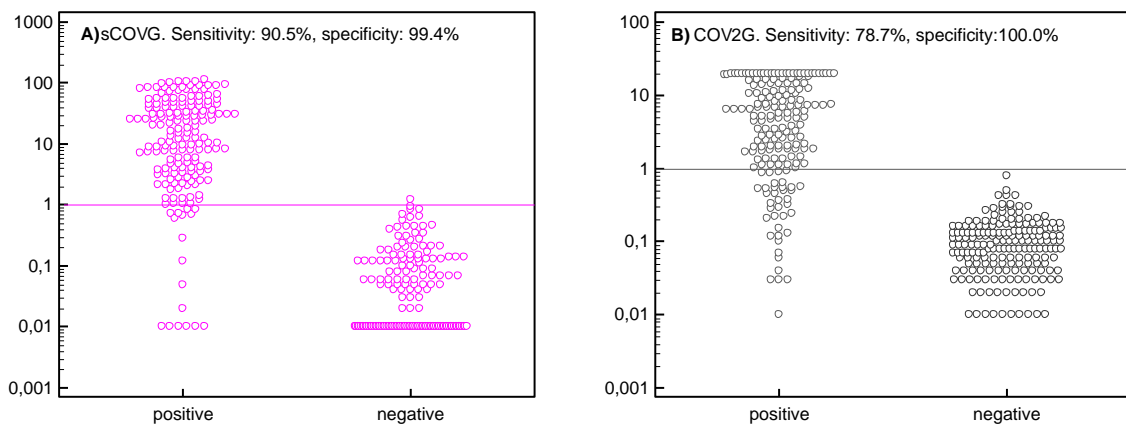
		Siemens SARS-CoV-2 IgG (sCOVG)	Siemens SARS-CoV-2 IgG (COV2G)
Sensitivity			
according to PI^a		91.1% (82.6-96.4%)	100.00% (91.59-100.00%)
All patients	Total	178	178
	Positive	161	140
	Negative	17	38
	Sensitivity	90.5% (85.2-94.3)	78.7% (71.9-84.4)
Male	Total	113	113
	Positive	105	98
	Negative	8	15
	Sensitivity	92.9% (86.5-96.9)	86.7% (79.1-92.4)
Female	Total	65	65
	Positive	56	42
	Negative	9	23
	Sensitivity	86.2% (75.3-93.5)	64.6% (51.8-76.1)
18-49	Total	59	59
	Positive	51	38
	Negative	8	21
	Sensitivity	86.4% (75.0-94.0)	64.4% (50.9-76.5)
50-69	Total	82	82
	Positive	76	71
	Negative	6	11
	Sensitivity	92.7% (84.8-97.3)	86.6% (77.3-93.1)
70-100	Total	37	37
	Positive	34	31
	Negative	3	6
	Sensitivity	91.9% (78.1-98.3)	83.8% (68.0-93.8)
Outpatient	Total	65	65
	Positive	55	41
	Negative	10	24
	Sensitivity	84.6% (73.5-92.4)	63.1% (50.2-74.7)
Gen. ward	Total	85	85
	Positive	79	72
	Negative	6	13
	Sensitivity	92.9% (85.3-97.4)	84.7% (75.3-91.6)
ICU	Total	28	28
	Positive	27	27
	Negative	1	1
	Sensitivity	96.4% (81.7-99.9)	96.4% (81.7-99.9)

Sensitivity of the evaluated test-systems including all SARS-CoV-2 PCR-confirmed patients (one sample per patient; the sample ≥ 14 days and closest to day 28 after symptom onset was used) and stratified for severity of the disease (outpatient, hospitalised at the general ward, hospitalized at the intensive care unit) as well as age (18-49, 50-69, 70-100 years), respectively. 95% confidence intervals are given in brackets. Abbreviations: PI: package insert. ^a \geq day 14 after PCR-diagnosis.

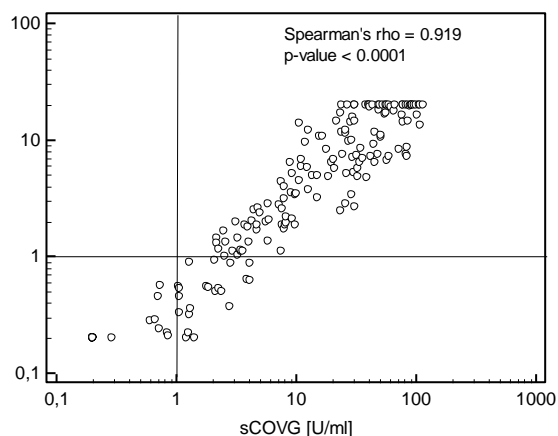
Supplemental Table S5. Qualitative agreement between the Siemens SARS-CoV-2 IgG and the neutralisation assay.

sCOVG	Neutralisation assay	
	negative	positive
negative	8	2
positive	0	124

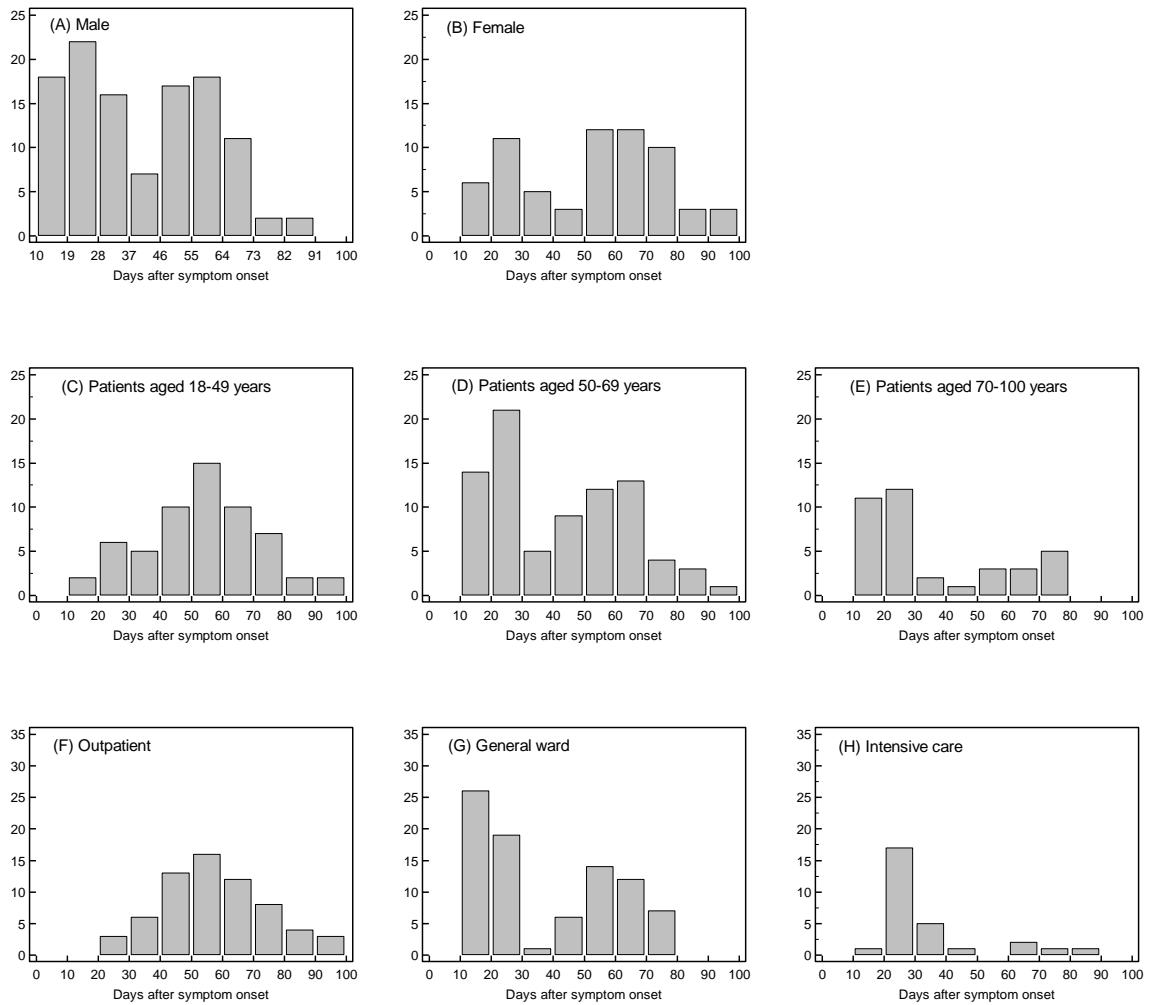
Supplemental Figures



Supplemental figure S1. Raw data indexes for the investigated tests Siemens SARS-CoV-2 IgG sCOVG (A) and COV2G (B) of the positive samples (178 samples of different SARS-CoV-2 PCR-confirmed patients) and negative samples (pre-pandemic samples, sCOVG $n = 160$, COV2G $n = 191$). The horizontal lines in the dot plots represent the manufacturer's cut off index.



Supplemental Figure S2. Scatter diagram of the quantitative values of the Siemens SARS-CoV-2 IgG sCOVG and the COV2G assays. For illustration purposes, values below 0.2 U/ml or Index, respectively, were set as 0.2. Take note: the upper measurement limit of the COV2G assay is 20.0 Index.



Supplemental Figure S3. Frequency distribution (histograms) of the sample timing used for sensitivity and quantitative results analyses in the different sub-cohorts.