

1

2 **Supplementary Information for**

3 **Economic evaluation of disease elimination: an extension to the net benefits framework and**
4 **application to human African trypanosomiasis**

5 **Marina Antillon, Ching-I Huang, Kat S. Rock, Fabrizio Tediosi**

6 **Corresponding Author Marina Antillon.**

7 **E-mail: marina.antillon@swisstph.ch**

8 **This PDF file includes:**

- 9 Supplementary text
- 10 Figs. S1 to S5
- 11 Tables S1 to S16
- 12 SI References

13 Supporting Information Text

14 1. Overview of the net-benefits framework

15 As mentioned in the keystone measure of value-for-money in cost-effectiveness analysis is the incremental cost-effectiveness
16 ratio (ICER), defined as the ratio of the difference in costs and the difference in health effects of two interventions:

$$17 \text{ Incremental cost-effectiveness ratio (ICER)} = \frac{\Delta \text{Costs}}{\Delta \text{Effects}} = \frac{\Delta C}{\Delta E},$$

18 where effects are usually denominated in disability-adjusted life-years (DALYs) (as in the current analysis) or in quality-adjusted
19 life-years (QALYs). Here, costs are denominated in US\$, even if a particular resource was provided in-kind (i.e. unpaid work
20 by community health workers) or borrowed capital (i.e. a microscope that could have been used for a campaign of another
21 disease).

22 The ratio is easily generalized to select among multiple interventions by taking the incremental costs and benefits of each
23 intervention compared to the next-best strategy, where a strategy is defined as a combination of interventions and the set of
24 strategies proposed in the analysis are mutually exclusive. In most of the literature, health effects are denominated in DALYs
25 (usually for low- and middle-income countries) and in QALYs (usually for high-income countries). Both measures incorporate a
26 factor of disease severity so as to make the measures comparable across diseases under study.

The net benefits framework was developed to account extend concepts in cost-effectiveness while incorporating parameter
uncertainty (1, 2). This framework makes use of two metrics: the net health benefits (NHB) and the net monetary benefits
(NMB) – the latter is the the metric on which we will focus in the current paper (although a formulation with the net health
benefits is also possible). The NMB is characterized as a simple arithmetic rearrangement of the ICER:

$$\begin{aligned} \text{ICER} &= \frac{\Delta C}{\Delta E} \leq \lambda^{\text{WTP}} \\ &0 \leq (\lambda^{\text{WTP}} \times \Delta E) - \Delta C \\ &= \text{Net Monetary Benefits (NMB)} \end{aligned}$$

In order to assess the impact of parameter uncertainty on costs and effects, and by extension, on the choice of strategy,
one of the most common procedures is a Monte Carlo procedure drawing random samples from the given parameters, and
applying it to the health and cost model. One can determine a strategy's probability to be cost-effective for at a specific
“willingness-to-pay” (WTP) threshold:

$$\Pr(\text{CE}_{\text{Strategy } j} | \lambda^{\text{WTP}}) = \frac{1}{N} \sum_{i=1}^N \mathbb{M}(\theta_i),$$

where

$$\mathbb{M}(\theta_i) = \begin{cases} 1 & \underset{k \in 1:J}{\text{argmax}} \text{NMB}(k, \theta_i | \lambda^{\text{WTP}}) = j \\ 0 & \text{Otherwise} \end{cases}$$

27 and where θ_i represents the i th iterate from the parameter space, in a simulation with N Monte Carlo iterations, and $\text{NMB}=0$
28 for $j=1$ (the comparator). Therefore, the probability that strategy j is cost-effective at λ^{WTP} is the proportion of times in a
29 Monte Carlo simulation of N iterates where the strategy j has the highest net benefits among all strategies at a given WTP.

The normative interpretation can be made in two ways: a risk-averse decision-maker will select the strategy that has the
highest chance of being cost-effective; however, the risk-neutral decision-maker might not, due to an interesting feature in
probabilistic simulations. One might note that in situations in which the probability distributions of the parameters in the
simulation are asymmetric, some interventions might have a lower median than a mean, due to long tails in their distributions,
thus sometimes yielding low probabilities of cost-effectiveness among all simulations but high expectations in the NMB. A
risk-neutral decision-maker who looks only to maximize the health returns on a given WTP would choose the strategy with the
highest expected NMB:

$$\underset{k \in 1:J}{\text{argmax}} \mathbb{E}(\text{NMB}(k, \theta_i | \lambda^{\text{WTP}}))$$

30 That debate is beyond the scope of the paper, and we will proceed with an assumption of a risk-neutral decision-maker.

31 2. Extension of net-benefits framework

Following the manner of the net benefits framework, we propose a rearrangement and combination of elimination objectives, defined here as ICER_{EOT} (where EOT is elimination of transmission), and objectives to avert disease burden, defined here as $\text{ICER}_{\text{DALY}}$:

$$\begin{aligned}\text{ICER}_{\text{DALY}} &= \frac{\Delta C_{\text{DALY}}}{\Delta \text{DALYs}} < \lambda_{\text{DALY}}^{\text{WTP}} \Rightarrow \text{NMB}_{\text{DALY}} = (\lambda_{\text{DALY}}^{\text{WTP}} \times \Delta \text{DALYs}) - \Delta C_{\text{DALY}} \\ \text{ICER}_{\text{EOT}} &= \frac{\Delta C_{\text{EOT}}}{\Delta \mathbb{I}_{\text{EOT}}} < \lambda_{\text{EOT}}^{\text{WTP}} \times 100 \Rightarrow \text{NMB}_{\text{EOT}} = (\lambda_{\text{EOT}}^{\text{WTP}} \times \Delta \mathbb{I}_{\text{EOT}}) - \Delta C_{\text{EOT}}\end{aligned}$$

where

$$\Delta \mathbb{I}_{\text{EOT}} = \begin{cases} -1 & \text{The comparator strategy leads to elimination, but the candidate strategy does not} \\ 0 & \text{Neither or both interventions lead to elimination} \\ 1 & \text{Only one intervention leads to elimination} \end{cases}$$

Then, we define the net monetary and elimination benefit, $\text{NMEB}(\theta_i)$, for each i of N iterations of the model as the sum of $\text{NMB}_{\text{DALY}}(\theta_i)$ and $\text{NMB}_{\text{EOT}}(\theta_i)$. C_{DALY} and C_{EOT} are rarely separable – especially in the presence of non-linearities of costs and transmission – so we simply continue to refer to total costs.

$$\begin{aligned}\text{Net Monetary and Elimination Benefits} &= \text{NMEB}(\theta_i) \\ &= \text{NMB}_{\text{DALY}_i} + \text{NMB}_{\text{EOT}_i} \\ \text{NMEB}(J, \theta_i | \text{WTP}_{\text{DALY}}, \lambda_{\text{EOT}}^{\text{WTP}}) &= (\lambda_{\text{DALY}}^{\text{WTP}} \times \Delta \text{DALYs}(\theta_i)) + (\lambda_{\text{EOT}}^{\text{WTP}} \times \Delta \mathbb{I}_{\text{EOT}}(\theta_i)) - \Delta C(\theta_i) : \\ &\quad \{j \in 2, \dots, J\} \ \& \ \{i \in 1, \dots, N\}\end{aligned}$$

32 Although one cannot purchase a service to make elimination certain, by taking into account the probability of elimination in
33 each intervention, one can estimate the degree to which interventions are justified by traditional control concerns (money-
34 per-DALY-averted), namely the product of $\lambda_{\text{DALY}}^{\text{WTP}}$ and DALYs averted, and then consider the complement as the degree that
35 strategies are defined by elimination concerns:

$$\begin{aligned}\Delta C &= \Delta \text{Justifiable by DALYs averted} + \Delta \text{Justifiable by EOT} \\ &= \lambda_{\text{DALY}}^{\text{WTP}} \times \Delta \text{DALYs} + \Delta \text{Justified by EOT}\end{aligned}$$

where

$$\Delta \text{Justifiable by EOT} := \text{Differential costs in iterations where interventions lead to different elimination outcomes}$$

36 Apportioning the costs to one of these categories (averting disease vs elimination) will have to satisfy certain properties and
37 principles.

38 **A. Justifiable costs of disease control.** We denominate the justifiable costs of disease control are the product of DALYs averted
39 and the willingness-to-pay:

$$\lambda_{\text{DALY}}^{\text{WTP}} \times \Delta \text{DALYs}$$

41 We follow established conventions to calculate DALYs and evaluate the estimates in present-day terms (after applying
42 discounting), as discussed in section 4 (3–5).

43 It should be noted that all CEAs require a time-horizon, approximately the health planner’s investment horizon. Mathemat-
44 ically, the application of a time-horizon means that all DALYs and costs are discounted at 3% per year for the duration of the
45 horizon (twenty years in this paper) and 100% discounting thereafter.

46 **B. Justifiable costs of elimination of transmission.** We designate the justifiable cost per additional percentage point in predicted
47 to achieve EOT:

$$100 \times \lambda_{\text{EOT}}^{\text{WTP}} \times \Delta \mathbb{I}_{\text{EOT}}(\theta_i)$$

49 The justifiable cost of EOT must satisfy these properties:

- There must be a reference to whether an intervention leads to elimination. Because this formulation deals with each Monte Carlo iterate, the reference will be an indicator variable of the difference in the elimination outcome of each intervention (the outcome achieved when using the same parameter set to simulate the health and cost outcomes):

$$\Delta \mathbb{I}_{\text{EOT}} = \mathbb{I}_{\text{EOT}}^{\text{strat A}} - \mathbb{I}_{\text{EOT}}^{\text{strat B}}$$

- Corollary: if two strategies achieve elimination, there is no premium for elimination between those two strategies, and all costs must be justified on the grounds of efficient control efforts (on a cost-per-DALY basis).

Table S1. Relationship between net monetary elimination benefits (NMEB) and the premium of elimination, $\text{Premium}_{\text{EOT}}$, for each iteration.

Minimum $\lambda_{\text{EOT}}^{\text{WTP}}$ necessary to select the elimination strategy	Simulation outcome	Description
0	$\Delta C \leq 0$	If the differential costs are completely justified by the control aspect (in terms of DALYs averted). This is the case if elimination leads to programmatic savings within the chosen time horizon of the analysis.
0	$\Delta C \leq \lambda_{\text{DALY}}^{\text{WTP}} \times \Delta \text{DALYs}$	If the differential costs are completely justified by the control aspect (in terms of DALYs averted).
0	$\Delta \mathbb{I}_{\text{EOT}} = 0$ & $\Delta C > \lambda_{\text{DALY}}^{\text{WTP}} \times \Delta \text{DALYs}$ (Unjustifiable by EOT achievement)	If both interventions lead to elimination
0	$\Delta \mathbb{I}_{\text{EOT}} = 0$ & $\Delta C > \lambda_{\text{DALY}}^{\text{WTP}} \times \Delta \text{DALYs}$ (No EOT achievement)	If neither intervention leads to elimination
$\Delta C - \lambda_{\text{DALY}}^{\text{WTP}} \times \Delta \text{DALYs}$	$\Delta \mathbb{I}_{\text{EOT}} = 1$ & $\Delta C > \lambda_{\text{DALY}}^{\text{WTP}} \times \Delta \text{DALYs}$ (Justifiable by EOT achievement)	If only one intervention achieves elimination AND differential costs of the one intervention that achieves elimination exceed those costs justified by differential DALYs averted
0	$\Delta \mathbb{I}_{\text{EOT}} = -1$ & $\Delta C > \lambda_{\text{DALY}}^{\text{WTP}} \times \Delta \text{DALYs}$	If the comparator intervention leads to elimination, but the candidate strategy did not, which could happen due to the stochastic term in the epidemiological model and the uncertainties in the parameters. Because the elimination strategy (comparator) is also lower cost than the candidate strategy, then the elimination strategy is justified by the control aspect of the strategy.
$-(\Delta C - \lambda_{\text{DALY}}^{\text{WTP}} \times \Delta \text{DALYs})$	$\Delta \mathbb{I}_{\text{EOT}} = -1$ & $\Delta C \leq \lambda_{\text{DALY}}^{\text{WTP}} \times \Delta \text{DALYs}$ (Justifiable by EOT achievement of the comparator)	If the comparator intervention leads to elimination, but the candidate strategy did not, which could happen due to the stochastic term in the epidemiological model and the uncertainties in the parameters. The value of the elimination $\lambda_{\text{EOT}}^{\text{WTP}}$ has to be higher than the cost savings borne by the candidate strategy.

In the single iteration, the value in the first column is comparable to the $\text{Premium}_{\text{EOT}}$ divided by 100, since the $\text{Premium}_{\text{EOT}}$ is denominated per percentage point gain in chances of EOT.

Abbreviations:

C: Costs

DALYs: disability-adjusted life-years

EOT: elimination of transmission

\mathbb{I} : indicator term for reaching EOT

$\lambda_{\text{DALY}}^{\text{WTP}}$: monetary willingness-to-pay to avert an additional DALY of disease.

- The justifiable cost of EOT is not conditioned on $\lambda_{\text{DALYs}}^{\text{WTP}}$, unlike the premium of elimination (see section C).
- It is possible that the comparator in some iterates achieves elimination while the candidate strategy does not. In this case, the justifiable cost is negative, lowering the NMB and favoring the comparator overall. It is important to focus on the expected NMB over all iterations, which considers the better decision on the balance of all uncertainties, rather than focusing on individual iterates.

The linear additive scale avoids mathematical problems between strategies that have the same probability of elimination (such that $\Delta \text{Costs} / \Delta \text{Pr. EOT}$ would be undefined). The interpretation of the justifiable cost of elimination for each iterate of the model is in Table S1.

C. Premium of elimination of transmission ($\text{Premium}_{\text{EOT}}$). The premium of elimination, although intimately related to the justifiable cost of elimination, is not precisely the same thing. If $\Delta C \leq \lambda_{\text{DALY}}^{\text{WTP}} \times \Delta \text{DALY}$ then the additional costs of a strategy are justified on the grounds of efficient control efforts, and the “premium for elimination” is therefore 0. For that reason, the premium of elimination is a metric conditioned on the $\lambda_{\text{DALY}}^{\text{WTP}}$. Therefore, the $\text{Premium}_{\text{EOT}}$ if formulated as follows, conditioning on WTP_{DALY} :

$$\text{Premium}_{\text{EOT}} | \lambda_{\text{DALY}}^{\text{WTP}} = \max\{\Delta C - \lambda_{\text{DALY}}^{\text{WTP}} \times \Delta \text{DALYs}, 0\}$$

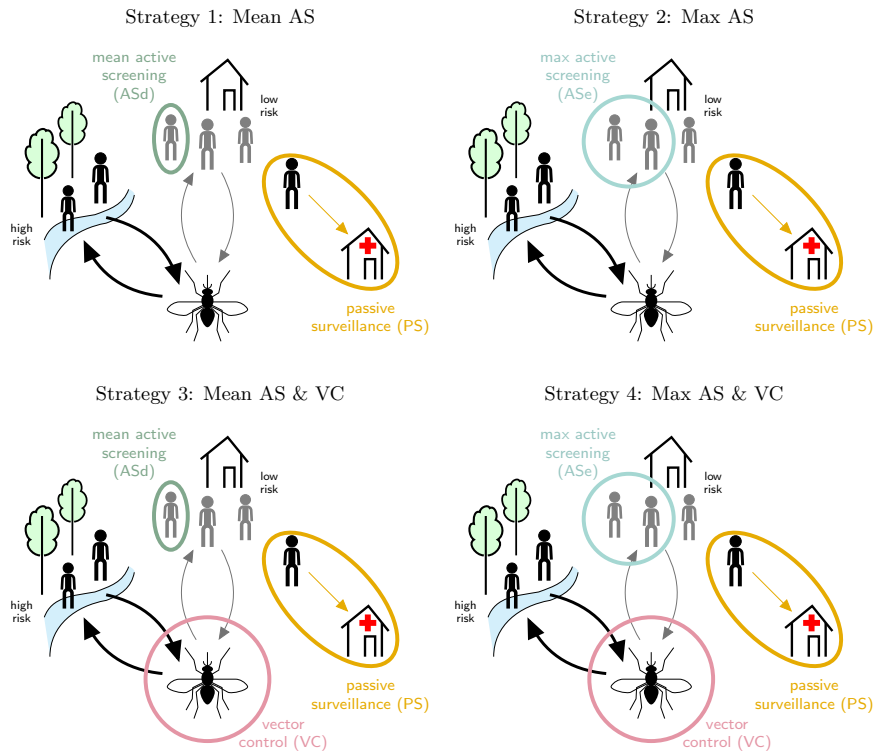


Fig. S1. Model of strategies against gHAT in DRC including active screening (AS) by mobile teams, passive surveillance (PS) in fixed health facilities. Cases detected by either mode are treated. In two strategies ('Mean AS' and 'Mean AS & VC') the active screening coverage is equal to the mean number screened during 2014–2018. In two other strategies ('Max AS' and 'Max AS & VC'), the coverage is the maximum number screened during 2000–2018. In strategies 3 and 4 vector control (VC) is simulated assuming a 80% tsetse density reduction after one year. PS is in place under all strategies. Figure reproduced under the creative commons licence from Antillon *et al.* (8).

60 3. Transmission model

61 **A. Disease model.** We employed a previously published dynamic, deterministic transmission Susceptible–Exposed–Infected–
 62 Recovered–Susceptible (SEIRS) model. While the model is detailed elsewhere (6, 7), briefly, we simulated gHAT illness and
 63 vector transmission in a compartmental model described by deterministic features, simulated using a set of ordinary differential
 64 equations. The stochastic nature of the observations was conferred by sampling from the infected prevalence to simulate those
 65 individuals who are diagnosed and report for treatment, either in a fixed health facility or to a mobile screening unit, and
 66 whether imperfect diagnostics correctly detect cases or identifies non-infected people as cases.

67 A Markov Chain Monte Carlo (MCMC) approach was previously used to generate posterior parameter sets for which the
 68 model outputs match the longitudinal data for different regions of the Democratic Republic of Congo (DRC) during 2000–2016.
 69 In the present study we selected three example regions – Kwamouth (Region 1), Mosango (Region 2), and Yumbi (Region 3) –
 70 of the 168 originally fitted as examples for illustrating this new health economic framework.

71 **B. Strategies and intervention model.** The locations used in the current analysis are described in Table S2. We chose these
 72 health zones in order to highlight diverse results of our new framework.

Table S2. Descriptive summaries of three health zones.

Characteristic	Kwamouth	Mosango	Yumbi
Province	Mai-Ndombe	Kwilu	Mai-Ndombe
Population (2016 est.)	131,022	125,076	121,796
Area (km ²)	14,589	2,606	1,622
Active screening as a percent of 2016 population (mean; max)	48; 69	34; 60	15; 32
HAT testing centers (2014 est.)	5	1	2
Yearly incidence per 10,000 (2014–2018)	8.70	0.99	1.94
WHO Incidence category (2014–2018)	Moderate	Low	Moderate
Vector control extent (linear km)	432	210	210
Vector control density (targets per linear km)	20	40	40

N.B.: For Kwamouth, the extent of riverbank where vector control must be performed is informed by planned activities. For Mosango and Yumbi, assumptions regarding vector control are based on the experience in places of similar size.

73 **B.1. Medical Interventions.** While the projections of strategies have been detailed in previously published manuscripts (8, 9), we
74 provide a brief sketch of the features of the simulation within the context of the current analysis. To determine the number of
75 cases detected by screening as well as the time lived with disease for cases that were never detected, we simulated a diagnostic
76 algorithm combined with the prevalence determined by the transmission model. Although diagnostic algorithms are elaborate
77 in practice, we simulated a simple algorithm that would capture the major features of the real process (10, 11). Suspects
78 in traditional active or passive surveillance activities are first screened by the Card Agglutination tests for Trypanosomiasis
79 (CATT) or rapid diagnostic tests (RDTs). Serologically-positive suspects then have blood drawn for microscopy observation
80 of the blood, and if trypanosoma are found, a patient undergoes a lumbar puncture to stage their disease (early infection is
81 “stage 1” and late is “stage 2”) and determine care. For those ineligible for oral fexinidazole treatment, staging of the disease is
82 done via lumbar puncture and followed by either treatment with pentamidine (stage 1) or nifurtimox-eflornithine combination
83 treatment (NECT, stage 2) (8, 12).

84 **B.2. Vector control.** To control the population of tsetse, special “Tiny Targets” have been developed that stand on riversides –
85 typical tsetse habitat – and deliver deadly insecticide upon contact (13–16). The advantage of this method of control of disease
86 is that it breaks the chain of transmission, even when some cases cannot be reached for treatment. Activities entail placing
87 Tiny Targets alongside the riverbanks twice per year for as many years as it takes to see a decline in the transmission of cases.
88 The impact of these activities on tsetse density has been documented elsewhere (15, 16) and its impact on disease transmission
89 has been evaluated in one modeling study for Chad (17) and through analysis of case reporting in Guinea (18).

90 In our study, we calculate that vector control will have to be deployed along 437 km of riverbank in Kwamouth but only 210
91 km of riverbank in Mosango and Yumbi. The reason is that we assumed that smaller health zones like Mosango and Yumbi
92 would need vector control activities closer to those in Yasa Bonga, a health zone of 2,606 km² (16). Kwamouth, by contrast,
93 spans 14,589 km² and contains two hot spots of transmission and therefore requires a broader treatment of riverbanks (8).

94 **B.3. Interventions in the endgame.** In simulating the end-game, we also assumed that additional confirmatory procedures such
95 as video microscopy (or lab-based tests) are being used to elevate the previous high specificity of screening algorithms (\approx
96 99.9%) to 100% in this context of diminishing prevalence (7). We further simulate the impact of stopping active screening and
97 vector control interventions (where applicable) based on observing three consecutive years of zero cases reporting (in either
98 active screening or passive surveillance). Our algorithm would allow restarting active screening should further cases later arise
99 through continuing passive detection. This cessation criterion is not only plausible in practice (it is unlikely that interventions
100 would continue indefinitely) but also is important in capturing the impact of stopping transmission and therefore saving future
101 intervention costs.

102 **C. Key outputs.** The key outputs of the dynamic and diagnostic models include mortality in undetected cases, detected cases
103 in stages 1 and 2, and DALYs before and after presenting to care for all interventions. The number of people actively screened,
104 and number (if any) of vector deployments performed each year is recorded.

105 **D. Elimination of Transmission.** Elimination of transmission (EOT) is assumed when the underlying transmission (not detected
106 cases) falls below 1 new infection per year (this proxy threshold is necessary when using a deterministic model to approximate
107 peri-elimination dynamics and has been used elsewhere (9, 19). The metric of interest in this paper is regional EOT (where
108 baseline activities must remain to prevent re-establishment) rather than eradication because we are not treating the issue of
109 importation of cases (20). This is also related to the World Health Organization’s gHAT goal for 2030 which is global EOT to
110 humans (21).

111 4. Health Impact

112 We measured health impact by combining the epidemiological outputs from the dynamic/screening model with a probability
113 tree that simulates the branching process of treatment progression and disease outcomes.

114 In accordance with the WHO interim guidelines on gHAT treatment (12), we assumed that treatment would consist of
115 1800 mg of fexinidazole for four days and 1200 mg of fexinidazole for six days for most patients in stage 1 and 2 disease. We
116 assumed that patients would be treated in equal parts on an inpatient and outpatient basis (as directly-observed therapy).
117 Patients who were either under 6 years old or under 20 kg in weight, undergo a lumbar puncture to determine disease stage
118 and are sorted accordingly into pentamidine or NECT inpatient treatment.

119 We simulated the disease process separately for stage 1 and stage 2 disease, and a small proportion of stage 1 cases are
120 assumed not cooperate with care or to undergo treatment failure, and are thus added to the number of cases that undergo
121 stage 2 care.

122 The disease and treatment probability tree model is deterministic, formalized mathematically through the product of
123 conditional probabilities of the outcome at each stage of disease and treatment progression (Fig S2). The disease tree model for
124 stage 1 includes: follow-up (for patients lost-to-follow-up), the presence of side effects, treatment success or failure, diagnosis
125 (in the case of treatment failure), and progression to stage 2 treatment (if applicable). For stage 2, additional steps include
126 death due to treatment and the process of rescue treatment (for patients who fail first-choice treatment for stage 2).

127 Health burden is denominated in DALYs, but we report cases and deaths for the benefit of the reader (Table 3). The
128 probability of EOT is denominated as a probability, and we treat it separately to DALYs averted.

129 Although the WHO CHOICE program recommends a 10-year time-horizon, as we believe that a 20-year time-horizon would
130 be the shortest time-period that ought to be considered in order to allow the economic rewards of elimination by 2030 to be
131 reaped. In fact, eradication of smallpox has been examined using an infinite time horizon with discounting (22).

132 **A. Disability-adjusted life-years.** For the purpose of denominating disease burden in a metric that is commonly used in health
133 economics, and the cost-effectiveness literature specifically, we use the disability-adjusted life-year, the sum of the years of life
134 lived with disability (illness) (YLD) and the years of life lost by fatal cases (YLL) (5, 23):

$$\text{DALY}_{\text{iteration } i}(\text{strategy } j) = \sum_i \text{YLL}_i + \text{YLD}_i$$

135 Although we do not here treat the QALY, our methods are directly applicable to QALYs gained if one were to substitute
136 them for DALYs averted.

137 **B. Years of life lost (YLL).** The years of life lost are the years that the individual i would have been expected to live less the
138 age that the individual died in. The life-table method of accounting would take into account the age-specific life-expectancy,
139 but we leave it out here for simplicity.

$$\text{YLL}_i^{\text{undiscounted}} := \text{life expectancy} - \text{age at death}_i$$

140 To calculate discounted values, we must calculate the discounted years of life lost in terms of the year in which the death
141 occurs, and then adjust the years lost to present day terms (by discounting a second time):

$$\text{YLL}_i^{\text{discounted}} := \frac{1}{(1+r)^{(\text{year of death}_i - \text{present year})}} \sum_{k=1}^{\text{YLL}_i^{\text{undiscounted}}} \frac{1}{(1+r)^k}$$

142 We assumed that the mean age of death from gHAT is 26.6 years, according to the limited existing data on the age of infected
143 patients (8).

144 **C. Years lived with disability (YLD).** The years lived with disability are calculated as follows. It is important to note that
145 disability and duration are conditioned on the stage for gHAT.

$$\text{YLD}_i^{\text{undiscounted}} := \text{duration} \times \text{disability weight}$$

146 For diseases like gHAT, which have more than one stage of illness, YLD should be calculated while conditioning on the stage, by
147 applying the duration and the severity of each stage, as done in (8). If we apply discounting, we must calculate the discounted
148 years of life lost due to disability in terms of the year in which the individual experiences the disability:

$$\text{YLD}_i^{\text{discounted}} := \sum_{\text{illness years}_i} \frac{\text{YLD}_i^{\text{undiscounted}}}{(1+r)^{(\text{illness years}_i - \text{present year})}}$$

149 We apply a disability weight, which ranges between 0 for perfect health and 1 for disability equal to death, to YLD (but not to
150 YLL) in order to measure the severity of the target disease (gHAT in this manuscript) relative to other diseases. Analysis of
151 strategies against deadlier diseases would therefore be appear be cost-effective at lower willingness-to-pay values than milder
152 diseases. These weights are calculated via studies that measure disability for a compendium of common illness symptoms (both
153 acute and chronic). We use the disability weights provided by the Global Burden of Disease study (24).

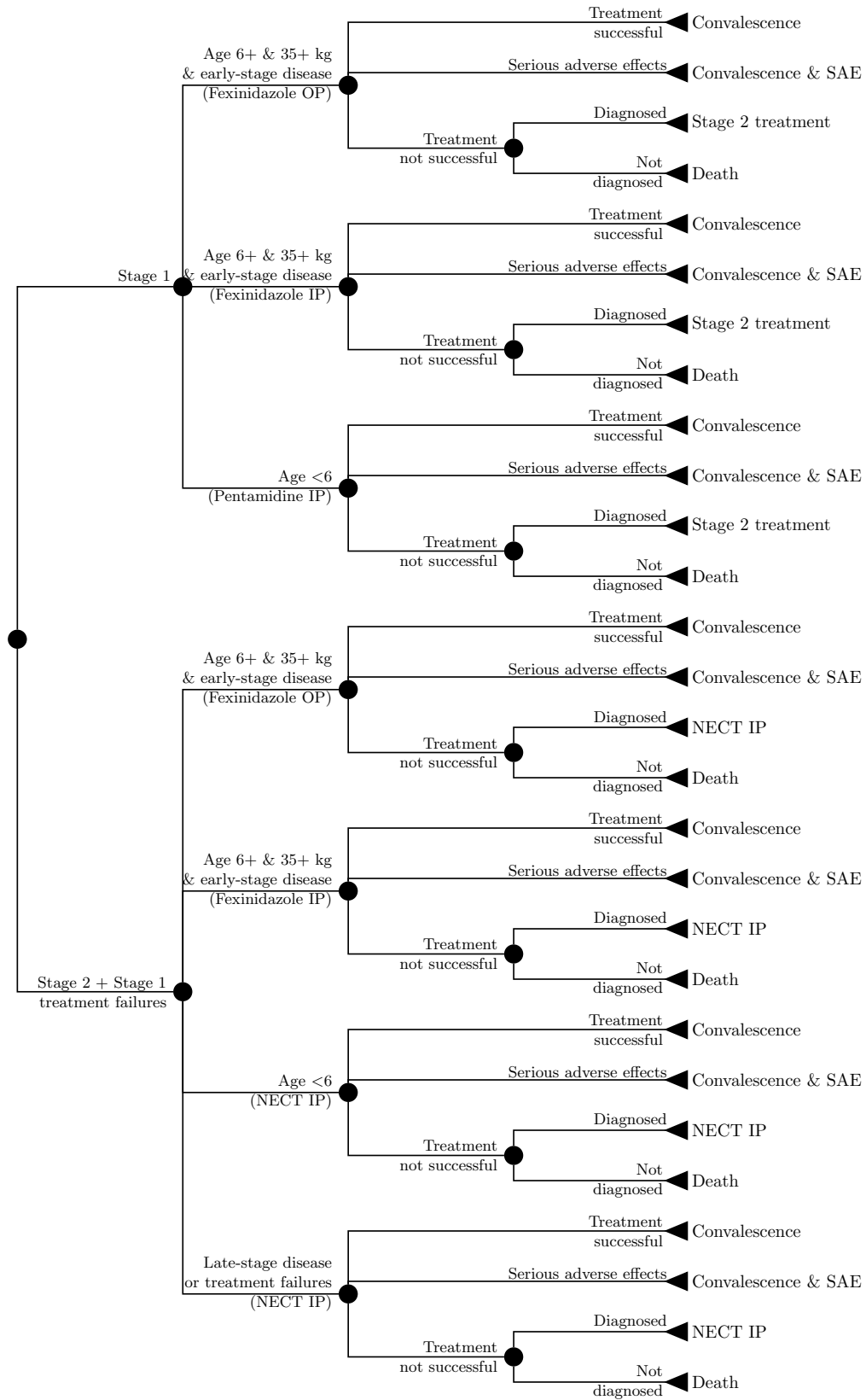


Fig. S2. Model of treatment for gHAT stages 1 and 2. Figure reproduced under the creative commons licence from Antillon *et al* (8).

154 **5. Costs**

155 We performed our analysis using the health payer perspective, and therefore, only direct medical costs are included in our
 156 analysis. The cost function structure is identical to that described in (8), and therefore we only briefly describe the main
 157 features here, but assumptions behind consumption vary slightly. The intermediate costs of strategies in each of the three
 158 regions are shown in tables S4–S12, as the strategies have different assumptions about consumption.

159 Intervention costs are estimated as the product of unit costs and appropriate units as informed by the extant literature on
 160 interventions and our collaborators in DRC. Accelerating costs per case found towards the end-game is the results from a
 161 decreasing number of cases.

162 Disease costs are linked to the probability tree model of treatment progression, and include diagnosis, confirmation, and
 163 staging, as well as the cost of the drug itself and the administration. Costs values are drawn from the literature. Where no cost
 164 data existed, WHO CHOICE costs were used. All costs are inflated to 2018 US\$ values.

165 There are three first-line treatments available for gHAT treatment: Pentamidine, for stage 1 only; NECT, for stage 2 only;
 166 and fexinidazole, which can be administered for stages 1 and 2 with some exceptions delineated by the 2019 WHO interim
 167 guidelines on gHAT treatment (12). The construction of the cost function for treatment is identical to that in (8), but we
 168 reproduce here (with permission) the fundamental results of costs per person, and the proportion of individuals we believe will
 need each treatment:

Table S3. Treatments and costs

Treatment	Rationale	Proportion of stage 1 cases	Proportion of stage 2 cases	Costs ($C^{\text{note 1, 2}}$)
Pentamidine	Under 6 years old and stage 1 by lumbar puncture	0.06 (0.05, 0.07)	-	\$100 (88, 117)
NECT	Under 6 years old and stage 2 by lumbar puncture, or late-stage disease ^{note 3}	-	0.65 (0.57, 0.73)	\$691 (644, 740)
Fexinidazole - inpatient	Over 6 years old but under 35 kg of weight. Stage 1 and early stage 2 disease only.	0.02 (<0.01, 0.04)	<0.01 (<0.01, 0.01)	\$87 (77, 101)
Fexinidazole - outpatient	Over 6 years old, over 35 kg of weight. Stage 1 and early stage-2 disease only.	0.92 (0.90, 0.94)	0.34 (0.26, 0.42)	\$95 (83, 106)

¹ Cost per unit includes the PNLTHA mark-up

² Cost per unit is exclusive of screening and confirmation but includes staging costs. Screening and confirmation are attributed to false positive patients as well, so it is calculated as part of active screening and passive surveillance.

³ According to our literature search, most stage 2 patients are severe or late-stage, so we assumed most of them would get NECT. This contributes <1% of the total costs of the whole strategy, so our conclusions are robust to these findings.

169 As with the health impact, we compute costs using a 20-year time-horizon to allow time to consider the economic rewards of
 170 elimination by 2030. However, any other choice of time horizon would be equally amenable to use in this new framework.

171 We omit dominated strategies – strategies that cost more but avert fewer DALYs – and weakly dominated strategies –
 172 strategies with high ICERs that avert fewer DALYs than strategies with lower ICERs. We do not show confidence intervals in
 173 ICERs as there are a variety of issues with the mathematical properties of such constructions (1).
 174

Table S4. Active screening: cost function

Item	Units (U)	Cost (C)
Capital (annualized)	AS coverage per year \times Population \div Capacity of one AS team	AS capital \times (1+PNLTHA mark-up)
Recurrent expenses	AS coverage per year \times Population \div Capacity of one AS team	AS recurrent \times (1+PNLTHA mark-up)
CATT testing ^{note 1}	AS coverage per year \times Population \times (1+wastage factors for AS CATT administration)	CATT \times (1+delivery mark-up) \times (1+PNLTHA markup)
Confirmation (microscopy)	(1-CATT specificity) \times (AS coverage per year \times Population) + Cases S1 detected with AS + Cases S2 detected with AS	Microscopy \times (1+PNLTHA markup)

¹ Ideally, CATT tests would be used for active screening and RDT tests would be used for passive surveillance because of the high wastage of CATT tests in the context of passive surveillance settings.

Table S5. Components of active screening costs

Variable Name	Parameterization	Summary
Population	Fixed	See Table S1
AS coverage per year	Fixed	See Table S1
Capacity of one AS team per year	Normal(60,000, 10,000)	59,918 (40,446, 79,547)
Wastage factor for CATT administration in AS context	Beta(8, 92)	0.08 (0.04, 0.14)
CATT specificity	Beta(31, 2)	0.94 (0.84, 0.99)
AS capital costs (annualized)	Gamma(81, 115)	9,269 (7,322, 11,436)
AS recurrent costs (annual)	Gamma(63, 631)	39,935 (30,927, 50,321)
Cost of CATT test	Gamma(23, 0.02)	0.46 (0.29, 0.66)
Cost confirmation (microscopy)	Gamma(8.475, 1.27)	10.73 (4.80, 18.87)
Cost of delivery (markup)	Beta(45, 55)	0.45 (0.35, 0.55)
PNLTHA markup	Uniform(0.1, 0.2)	0.15 (0.10, 0.20)

Table S6. Cost breakdown for active screening activities per year

Item	Units (U)	Cost per unit (C) ^{note 1}	Cost per category
Kwamouth, mean coverage			
Capital (annualized)	1.08 (0.79, 1.55)	10,653 (8,388, 13,207)	11,518 (7,707, 17,410)
Recurrent expenses	1.08 (0.79, 1.55)	45,900 (35,292, 58,148)	49,626 (32,622, 75,031)
CATT testing	67,910 (65,104, 71,741)	0.53 (0.33, 0.76)	35,705 (22,395, 52,252)
Confirmation (microscopy)	3,797 (506, 9,924)	12.33 (5.53, 21.78)	46,782 (5,221, 142,700)
Total			143,631 (90,074, 241,151)
Kwamouth, additional coverage in max AS			
Capital (annualized)	0.47 (0.35, 0.68)	10,653 (8,388, 13,207)	5,039 (3,372, 7,617)
Recurrent expenses	0.47 (0.35, 0.68)	45,900 (35,292, 58,148)	21,712 (14,272, 32,826)
CATT testing	29,711 (28,483, 31,387)	0.53 (0.33, 0.76)	15,621 (9,798, 22,860)
Confirmation (microscopy)	1,661 (222, 4,342)	12.33 (5.53, 21.78)	20,467 (2,284, 62,431)
Total			62,838 (39,407, 105,503)
Mosango, mean coverage			
Capital (annualized)	0.73 (0.53, 1.05)	10,653 (8,388, 13,207)	7,788 (5,211, 11,772)
Recurrent expenses	0.73 (0.53, 1.05)	45,900 (35,292, 58,148)	33,557 (22,058, 50,735)
CATT testing	45,920 (44,023, 48,511)	0.53 (0.33, 0.76)	24,143 (15,143, 35,332)
Confirmation (microscopy)	2,567 (342, 6,711)	12.33 (5.53, 21.78)	31,633 (3,531, 96,492)
Total			97,121 (60,907, 163,063)
Mosango, additional coverage in max AS			
Capital (annualized)	0.56 (0.41, 0.80)	10,653 (8,388, 13,207)	5,956 (3,985, 9,002)
Recurrent expenses	0.56 (0.41, 0.80)	45,900 (35,292, 58,148)	25,661 (16,868, 38,797)
CATT testing	35,115 (33,664, 37,096)	0.53 (0.33, 0.76)	18,462 (11,580, 27,019)
Confirmation (microscopy)	1,963 (262, 5,132)	12.33 (5.53, 21.78)	24,190 (2,700, 73,788)
Total			74,269 (46,576, 124,695)
Yumbi, mean coverage			
Capital (annualized)	0.30 (0.22, 0.44)	10,657 (8,412, 13,164)	3,247 (2,165, 4,900)
Recurrent expenses	0.30 (0.22, 0.44)	45,939 (35,251, 57,983)	14,000 (9,115, 21,407)
CATT testing	19,136 (18,357, 20,174)	0.52 (0.33, 0.77)	10,044 (6,386, 14,667)
Confirmation (microscopy)	1,081 (140, 2,897)	12.33 (5.48, 21.98)	13,297 (1,453, 41,076)
Total			40,588 (25,328, 69,378)
Yumbi, additional coverage in max AS			
Capital (annualized)	0.06 (0.05, 0.09)	10,657 (8,412, 13,164)	674 (450, 1,017)
Recurrent expenses	0.06 (0.05, 0.09)	45,939 (35,251, 57,983)	2,907 (1,893, 4,445)
CATT testing	3,973 (3,812, 4,189)	0.52 (0.33, 0.77)	2,085 (1,326, 3,045)
Confirmation (microscopy)	224 (29, 601)	12.33 (5.48, 21.98)	2,761 (302, 8,529)
Total			8,428 (5,259, 14,406)

¹ Cost per unit includes the PNLTHA mark-up

Table S7. Passive surveillance: cost function

Item	Units (U)	Cost (C)
Capital (annualized)	Number of facilities capable of PS within the health zone	Capital costs (clinic) × (1+PNLTHA mark-up)
District management	Per district	District management cost × (1+PNLTHA mark-up)
Consultation	PS coverage per year per clinic × Clinics in the health zone × Population	Consultation cost × (1+PNLTHA markup)
RDT testing ¹	PS coverage per year per clinic × Clinics in the health zone × Population	RDT × (1+delivery mark-up) × (1+PNLTHA markup)
Confirmation (microscopy)	(1-RDT specificity) × (PS coverage per year per clinic × Clinics in the health zone × Population) + Cases S1 detected with PS + Cases S2 detected with PS	Microscopy × (1+PNLTHA markup)

¹ Ideally, CATT tests would be used for active screening and RDT tests would be used for passive surveillance because of the high wastage of CATT tests in the context of passive surveillance settings.

Table S8. Components of passive surveillance costs

Variable Name	Parameterization	Summary
Population	Fixed	See Table S1
PS facilities	Fixed	See Table S1
PS coverage per facility	Beta(14, 2094)	0.007 (0.004, 0.010)
Wastage factor for RDT administration in PS context	Beta(1, 99)	0.01 (<0.01, 0.04)
RDT specificity	Beta(226, 31)	0.88 (0.84, 0.92)
Capital costs (annualized)	Gamma(8.475, 210)	1,770 (792, 3,144)
Recurrent costs (yearly)	Gamma(8.475, 986)	8,320 (3,705, 14,787)
Cost of consultation	Gamma(1.37, 3.33)	2.35 (1.41, 3.28)
Cost of RDT test	Gamma(8.475, 0.19)	1.61 (0.71, 2.85)
Cost confirmation (microscopy)	Gamma(8.475, 1.27)	10.73 (4.80, 18.87)
Cost of delivery (markup)	Beta(45, 55)	0.45 (0.35, 0.55)
PNLTHA markup	Uniform(0.1, 0.2)	0.15 (0.10, 0.20)

Table S9. Cost breakdown for passive surveillance activities per year

Item	Units (U)	Cost per unit (C) ^{note 1}	Cost per category
Kwamouth			
Capital (annualized)	5	2,034 (906, 3,615)	10,171 (4,530, 18,075)
District management	1	9,561 (4,238, 17,037)	9,561 (4,238, 17,037)
Consultation	4,349 (2,369, 6,871)	2.70 (1.63, 3.80)	11,746 (5,127, 21,498)
RDT testing	4,349 (2,369, 6,871)	2.47 (0.49, 6.12)	10,731 (1,885, 29,117)
Confirmation (microscopy)	525 (262, 904)	12.33 (5.53, 21.78)	6,470 (2,191, 14,072)
Total			48,679 (29,784, 76,290)
Mosango			
Capital (annualized)	1	2,034 (906, 3,615)	2,034 (906, 3,615)
District management	1	9,561 (4,238, 17,037)	9,561 (4,238, 17,037)
Consultation	830 (452, 1,312)	2.70 (1.63, 3.80)	2,243 (979, 4,104)
RDT testing	830 (452, 1,312)	2.47 (0.49, 6.12)	2,049 (360, 5,559)
Confirmation (microscopy)	100 (50, 173)	12.33 (5.53, 21.78)	1,235 (418, 2,687)
Total			17,122 (10,393, 25,921)
Yumbi			
Capital (annualized)	2	2,040 (895, 3,638)	4,080 (1,791, 7,276)
District management	1	9,619 (4,176, 17,163)	9,619 (4,176, 17,163)
Consultation	1,070 (749, 1,442)	2.70 (1.63, 3.80)	2,890 (1,522, 4,660)
RDT testing	1,070 (749, 1,442)	2.48 (0.46, 6.05)	2,651 (472, 6,751)
Confirmation (microscopy)	129 (77, 197)	12.33 (5.48, 21.98)	1,586 (590, 3,233)
Total			20,826 (13,572, 30,326)

¹ Cost per unit includes the PNLTHA mark-up

Table S10. Vector Control: cost function

Item	Units (<i>U</i>)	Cost (<i>C</i>)
Entomological surveys, sensitization and management	Kilometers of river covered	Cost for entomological surveys, sensitisation and district management per kilometer × (1+PNLTHA markup)
Target deployment	Kilometers of river covered × Targets per kilometer × Number of deployments per year	Cost for target deployment per target × (1+PNLTHA markup)

Table S11. Components of vector control costs

Variable Name	Parameterization	Summary
Linear km	Fixed (sensitivity analyses)	210 or 432 ^{note 1}
Units per km	Fixed (sensitivity analyses)	20 or 40 ^{note 2}
Deployments per year	Fixed	2
Cost for entomological surveys, sensitisation and district management per kilometer	Gamma(8.48, 14.17)	120.77 (53.94, 214.49)
Cost per target deployment per target	Gamma(8.48, 0.54)	4.54 (2.01, 8.08)
PNLTHA markup	Uniform(0.1, 0.2)	0.15 (0.10, 0.20)

¹ Due to Kwamouth's large size and two transmission hotspots, VC is deployed in 432 km of river.

² While it is planned that 20 targets per km will be deployed in Kwamouth, we assumed the standard 40 targets per km in would need to be deployed in Mosango and Yumbi (25).

Table S12. Cost breakdown for vector control activities

Item	Units (<i>U</i>)	Cost per unit (<i>C</i>) ^{note 1}	Cost per category
Kwamouth (planned): 432 km, 20 targets per kilometer			
Entomological surveys, sensitization and management	432 km	138.79 (62.33, 246.36)	59,955 (26,925, 106,428)
Target deployment	17280 targets	5.22 (2.30, 9.27)	90,221 (39,760, 160,206)
Total			150,176 (86,482, 232,778)
Mosango and Yumbi: 210 km, 40 targets per kilometer			
Entomological surveys, sensitization and management	210 km	138.79 (62.33, 246.36)	29,145 (13,089, 51,736)
Target deployment	16800 targets	5.22 (2.30, 9.27)	87,715 (38,656, 155,756)
Total			116,860 (63,346, 187,589)

¹ Cost per unit includes the PNLTHA mark-up

Table S13. Intermediate outcomes, cost-effectiveness, and efficiency of elimination in Kwamouth (Region 1).

	Mean AS	Max AS	Mean AS & VC	Max AS & VC
Basic outputs ^{note 1}				
Cases	477 (144, 1,081)	463 (136, 1,047)	116 (41, 235)	120 (38, 270)
Deaths	215 (44, 629)	176 (37, 503)	63 (22, 132)	51 (17, 108)
DALYs	3,934 (887, 11,039)	3,332 (781, 9,157)	1,183 (401, 2,510)	1,075 (361, 2,293)
ΔDALYs	Comparator	603 (-196, 2,250)	2,751 (342, 8,761)	2,859 (381, 9,011)
Costs (USD, × 1000)	2,952 (2,015, 4,535)	3,883 (2,607, 6,089)	3,753 (2,412, 5,866)	4,226 (2,666, 6,713)
ΔCosts (USD, × 1000)	Comparator	931 (468, 1,613)	800 (-657, 2,823)	1,274 (-187, 3,492)
ICER ^{notes 2, 3} _{DALY}	Minimum cost	Dominated	291	4,387
Pr. EOT	0	0	100	100
ΔPr. EOT	Comparator	0	100	100
$\lambda_{DALY}^{WTP} = 0$ USD ^{note 4}				
NMB (USD, × 1000)	0 (0, 0)	-931 (-1,613, -468)	-800 (-2,823, 657)	-1,274 (-3,492, 187)
Justifiable costs (USD, × 1000)	Preferred	0 (0, 0)	0 (0, 0)	0 (0, 0)
Premium _{EOT} (USD, × 1000)	Preferred	931 (468, 1,613)	800 (0, 2,823)	1,274 (0, 3,492)
ΔPremium _{EOT} /ΔPr. EOT (vs preferred) ^{note 5} , USD)	Preferred	No advantage	8,001	12,735
ΔPremium _{EOT} /ΔPr. EOT (incremental, USD)	Preferred	Dominated	8,001	Dominated
$\lambda_{DALY}^{WTP} = 250$ USD				
NMB (USD, × 1000)	0 (0, 0)	-780 (-1,515, -235)	-112 (-2,505, 2,090)	-559 (-3,208, 1,640)
Justifiable costs (USD, × 1000)	Preferred	151 (-49, 562)	688 (85, 2,190)	715 (95, 2,253)
Premium _{EOT} (USD, × 1000)	Preferred	780 (235, 1,515)	112 (0, 2,505)	559 (0, 3,208)
ΔPremium _{EOT} /ΔPr. EOT (vs preferred, USD)	Preferred	No advantage	1,123	5,587
ΔPremium _{EOT} /ΔPr. EOT (incremental, USD)	Preferred	Dominated	1,123	Dominated
$\lambda_{DALY}^{WTP} = 500$ USD				
NMB (USD, × 1000)	0 (0, 0)	-629 (-1,439, 230)	576 (-2,266, 4,102)	156 (-2,953, 3,757)
Justifiable costs (USD, × 1000)	Suboptimal	Suboptimal	Preferred	54 (-146, 281)
Premium _{EOT} (USD, × 1000)	Suboptimal	Suboptimal	Preferred	419 (0, 1,838)
ΔPremium _{EOT} /ΔPr. EOT (vs preferred, USD)	Suboptimal	Suboptimal	Preferred	No advantage
ΔPremium _{EOT} /ΔPr. EOT (incremental, USD)	Suboptimal	Suboptimal	Preferred	Dominated
$\lambda_{DALY}^{WTP} = 1000$ USD				
NMB (USD, × 1000)	0 (0, 0)	-328 (-1,387, 1,300)	1,951 (-1,838, 8,358)	1,586 (-2,495, 8,088)
Justifiable costs (USD, × 1000)	Suboptimal	Suboptimal	Preferred	108 (-291, 562)
Premium _{EOT} (USD, × 1000)	Suboptimal	Suboptimal	Preferred	366 (0, 1,846)
ΔPremium _{EOT} /ΔPr. EOT (vs preferred, USD)	Suboptimal	Suboptimal	Preferred	No advantage
ΔPremium _{EOT} /ΔPr. EOT (incremental, USD)	Suboptimal	Suboptimal	Preferred	Dominated
$\lambda_{DALY}^{WTP} = 1500$ USD				
NMB (USD, × 1000)	0 (0, 0)	-27 (-1,409, 2,423)	3,327 (-1,468, 12,695)	3,015 (-2,108, 12,475)
Justifiable costs (USD, × 1000)	Suboptimal	Suboptimal	Preferred	162 (-437, 842)
Premium _{EOT} (USD, × 1000)	Suboptimal	Suboptimal	Preferred	312 (0, 1,883)
ΔPremium _{EOT} /ΔPr. EOT (vs preferred, USD)	Suboptimal	Suboptimal	Preferred	No advantage
ΔPremium _{EOT} /ΔPr. EOT (incremental, USD)	Suboptimal	Suboptimal	Preferred	Dominated

¹ Cases and deaths are undiscounted, whereas DALYs and costs are discounted at 3% per year.

² A dominated strategy is one that has a higher cost but averts fewer DALYs or has the same or lower probability of EOT than a less expensive strategy. A weakly dominated strategy has a higher ICER than the next more expensive strategy. See SI section 7.

³ We do not show prediction intervals for ICERs as there are a variety of issues with the mathematical properties of such constructions (1).

⁴ For context on the values of λ_{DALY}^{WTP} that we have chosen to display, see Table 2.

⁵ "Preferred" here refers to the strategy that would be considered optimal under traditional cost-effectiveness criteria (which does not account for EOT or reaching other global health goals).

Table S14. Intermediate outcomes, cost-effectiveness, and efficiency of elimination in Mosango (Region 2).

	Mean AS	Max AS	Mean AS & VC	Max AS & VC
Basic outputs^{note 1}				
Cases	23 (1, 79)	22 (0, 92)	9 (0, 41)	10 (0, 54)
Deaths	13 (1, 42)	8 (0, 29)	5 (0, 16)	4 (0, 12)
DALYs	247 (20, 806)	167 (2, 563)	106 (1, 320)	82 (1, 263)
ΔDALYs	Comparator	80 (-87, 367)	142 (-41, 550)	165 (-21, 596)
Costs (USD, × 1000)	1,019 (497, 1,822)	1,397 (627, 2,628)	1,252 (623, 2,059)	1,522 (733, 2,535)
ΔCosts (USD, × 1000)	Comparator	378 (-160, 1,101)	234 (-447, 939)	503 (-214, 1,332)
ICER ^{note 2,3} _{DALY}	Minimum cost	Dominated	1,651	11,534
Pr. EOT	79	92	100	100
ΔPr. EOT	Comparator	13	21	21
λ^{WTP}_{DALY} = 0 USD^{note 4}				
NMB (USD, × 1000)	0 (0, 0)	-378 (-1,101, 160)	-234 (-939, 447)	-503 (-1,332, 214)
Justifiable costs (USD, × 1000)	Preferred	0 (0, 0)	0 (0, 0)	0 (0, 0)
Premium _{EOT} (USD, × 1000)	Preferred	378 (0, 1,101)	234 (0, 939)	503 (0, 1,332)
ΔPremium _{EOT} /ΔPr. EOT (vs preferred ^{note 5} , USD)	Preferred	29,189	10,916	23,494
ΔPremium _{EOT} /ΔPr. EOT (incremental, USD)	Preferred	Dominated	10,916	Dominated
λ^{WTP}_{DALY} = 250 USD				
NMB (USD, × 1000)	0 (0, 0)	-358 (-1,064, 170)	-199 (-912, 505)	-462 (-1,293, 275)
Justifiable costs (USD, × 1000)	Preferred	20 (-22, 92)	35 (-10, 137)	41 (-5, 149)
Premium _{EOT} (USD, × 1000)	Preferred	358 (0, 1,064)	199 (0, 912)	462 (0, 1,293)
ΔPremium _{EOT} /ΔPr. EOT (vs preferred, USD)	Preferred	27,646	9,263	21,569
ΔPremium _{EOT} /ΔPr. EOT (incremental, USD)	Preferred	Dominated	9,263	Dominated
λ^{WTP}_{DALY} = 500 USD				
NMB (USD, × 1000)	0 (0, 0)	-338 (-1,041, 184)	-163 (-893, 573)	-421 (-1,260, 341)
Justifiable costs (USD, × 1000)	Preferred	40 (-43, 183)	71 (-21, 275)	83 (-11, 298)
Premium _{EOT} (USD, × 1000)	Preferred	338 (0, 1,041)	163 (0, 893)	421 (0, 1,260)
ΔPremium _{EOT} /ΔPr. EOT (vs preferred, USD)	Preferred	26,102	7,610	19,643
ΔPremium _{EOT} /ΔPr. EOT (incremental, USD)	Preferred	Dominated	7,610	Dominated
λ^{WTP}_{DALY} = 1000 USD				
NMB (USD, × 1000)	0 (0, 0)	-298 (-1,003, 228)	-92 (-853, 756)	-338 (-1,222, 524)
Justifiable costs (USD, × 1000)	Preferred	80 (-87, 367)	142 (-41, 550)	165 (-21, 596)
Premium _{EOT} (USD, × 1000)	Preferred	298 (0, 1,003)	92 (0, 853)	338 (0, 1,222)
ΔPremium _{EOT} /ΔPr. EOT (vs preferred, USD)	Preferred	23,016	4,304	15,792
ΔPremium _{EOT} /ΔPr. EOT (incremental, USD)	Preferred	Dominated	4,304	Dominated
λ^{WTP}_{DALY} = 1500 USD				
NMB (USD, × 1000)	0 (0, 0)	-258 (-981, 311)	-21 (-822, 973)	-256 (-1,180, 750)
Justifiable costs (USD, × 1000)	Preferred	120 (-130, 550)	213 (-62, 825)	248 (-32, 895)
Premium _{EOT} (USD, × 1000)	Preferred	258 (0, 981)	21 (0, 822)	256 (0, 1,180)
ΔPremium _{EOT} /ΔPr. EOT (vs preferred, USD)	Preferred	19,929	999	11,941
ΔPremium _{EOT} /ΔPr. EOT (incremental, USD)	Preferred	Dominated	999	Dominated

¹ Cases and deaths are undiscounted, whereas DALYs and costs are discounted at 3% per year.

² A dominated strategy is one that has a higher cost but averts fewer DALYs or has the same or lower probability of EOT than a less expensive strategy. A weakly dominated strategy has a higher ICER than the next more expensive strategy. See SI section 7.

³ We do not show prediction intervals for ICERs as there are a variety of issues with the mathematical properties of such constructions (1).

⁴ For context on the values of λ^{WTP}_{DALY} that we have chosen to display, see Table 2.

⁵ "Preferred" here refers to the strategy that would be considered optimal under traditional cost-effectiveness criteria (which does not account for EOT or reaching other global health goals).

Table S15. Intermediate outcomes, cost-effectiveness, and efficiency of elimination in Yumbi (Region 3).

	Mean AS	Max AS	Mean AS & VC	Max AS & VC
Basic outputs^{note 1}				
Cases	47 (9, 115)	47 (7, 122)	23 (3, 59)	24 (2, 67)
Deaths	24 (5, 69)	20 (4, 55)	14 (3, 33)	12 (2, 30)
DALYs	501 (112, 1,327)	420 (91, 1,095)	305 (73, 708)	274 (58, 656)
ΔDALYs	Comparator	81 (-152, 409)	196 (-73, 770)	227 (-50, 843)
Costs (USD, × 1000)	784 (505, 1,207)	846 (533, 1,342)	1,475 (829, 2,459)	1,483 (831, 2,473)
ΔCosts (USD, × 1000)	Comparator	62 (-123, 269)	691 (83, 1,594)	700 (103, 1,618)
ICER ^{note 2,3} _{DALY}	Minimum cost	771	Weakly dominated	4,355
Pr. EOT	46	55	100	100
ΔPr. EOT	Comparator	10	54	54
λ^{WTP}_{DALY} = 0 USD^{note 4}				
NMB (USD, × 1000)	0 (0, 0)	-62 (-269, 123)	-691 (-1,594, -83)	-700 (-1,618, -103)
Justifiable costs (USD, × 1000)	Preferred	0 (0, 0)	0 (0, 0)	0 (0, 0)
Premium _{EOT} (USD, × 1000)	Preferred	62 (0, 269)	691 (83, 1,594)	700 (103, 1,618)
ΔPremium _{EOT} /ΔPr. EOT (vs preferred ^{note 5} , USD)	Preferred	6,489	12,760	12,909
ΔPremium _{EOT} /ΔPr. EOT (incremental, USD)	Preferred	6,489	14,113	Dominated
λ^{WTP}_{DALY} = 250 USD				
NMB (USD, × 1000)	0 (0, 0)	-42 (-258, 156)	-643 (-1,556, -3)	-643 (-1,570, -7)
Justifiable costs (USD, × 1000)	Preferred	20 (-38, 102)	49 (-18, 193)	57 (-12, 211)
Premium _{EOT} (USD, × 1000)	Preferred	42 (0, 258)	643 (3, 1,556)	643 (7, 1,570)
ΔPremium _{EOT} /ΔPr. EOT (vs preferred, USD)	Preferred	4,384	11,857	11,861
ΔPremium _{EOT} /ΔPr. EOT (incremental, USD)	Preferred	4,384	13,469	Dominated
λ^{WTP}_{DALY} = 500 USD				
NMB (USD, × 1000)	0 (0, 0)	-22 (-259, 211)	-594 (-1,517, 111)	-586 (-1,517, 122)
Justifiable costs (USD, × 1000)	Preferred	40 (-76, 205)	98 (-36, 385)	114 (-25, 422)
Premium _{EOT} (USD, × 1000)	Preferred	22 (0, 259)	594 (0, 1,517)	586 (0, 1,517)
ΔPremium _{EOT} /ΔPr. EOT (vs preferred, USD)	Preferred	2,280	10,954	10,812
ΔPremium _{EOT} /ΔPr. EOT (incremental, USD)	Preferred	2,280	Dominated	12,654
λ^{WTP}_{DALY} = 1000 USD				
NMB (USD, × 1000)	0 (0, 0)	19 (-295, 371)	-496 (-1,459, 395)	-472 (-1,452, 442)
Justifiable costs (USD, × 1000)	Suboptimal	Preferred	115 (-113, 524)	146 (-88, 568)
Premium _{EOT} (USD, × 1000)	Suboptimal	Preferred	514 (0, 1,454)	491 (0, 1,426)
ΔPremium _{EOT} /ΔPr. EOT (vs preferred, USD)	Suboptimal	Preferred	11,538	11,013
ΔPremium _{EOT} /ΔPr. EOT (incremental, USD)	Suboptimal	Preferred	Dominated	11,013
λ^{WTP}_{DALY} = 1500 USD				
NMB (USD, × 1000)	0 (0, 0)	59 (-343, 562)	-398 (-1,427, 734)	-359 (-1,413, 810)
Justifiable costs (USD, × 1000)	Suboptimal	Preferred	172 (-170, 787)	219 (-131, 852)
Premium _{EOT} (USD, × 1000)	Suboptimal	Preferred	457 (0, 1,444)	418 (0, 1,407)
ΔPremium _{EOT} /ΔPr. EOT (vs preferred, USD)	Suboptimal	Preferred	10,250	9,372
ΔPremium _{EOT} /ΔPr. EOT (incremental, USD)	Suboptimal	Preferred	Dominated	9,372

¹ Cases and deaths are undiscounted, whereas DALYs and costs are discounted at 3% per year.

² We do not show prediction intervals for ICERs as there are a variety of issues with the mathematical properties of such constructions (1).

³ A dominated strategy is one that has a higher cost but averts fewer DALYs or has the same or lower probability of EOT than a less expensive strategy. A weakly dominated strategy has a higher ICER than the next more expensive strategy. See SI section 7.

⁴ For context on the values of λ^{WTP}_{DALY} that we have chosen to display, see Table 2.

⁵ "Preferred" here refers to the strategy that would be considered optimal under traditional cost-effectiveness criteria (which does not account for EOT or reaching other global health goals).

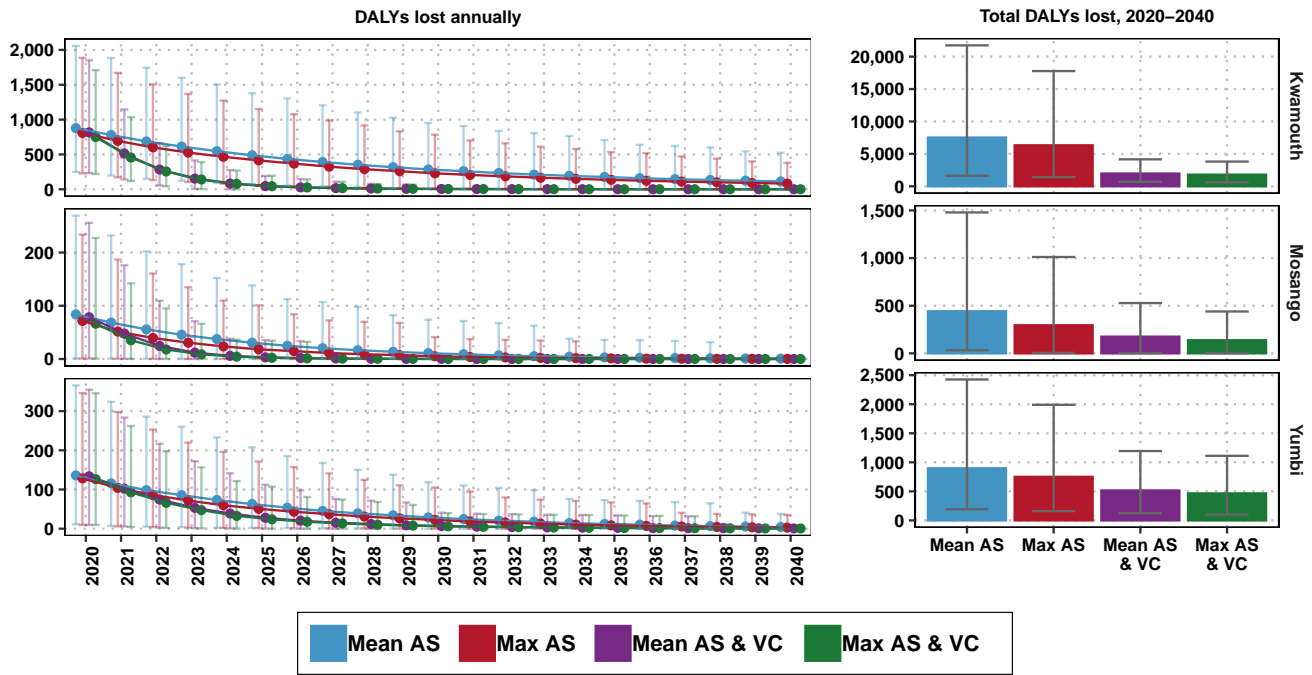


Fig. S3. Components of mean annual and cumulative costs, by strategy and location. Displayed costs are not discounted. Treatment costs, indicated in purple, are shown here although they are so small as to be hardly visible.

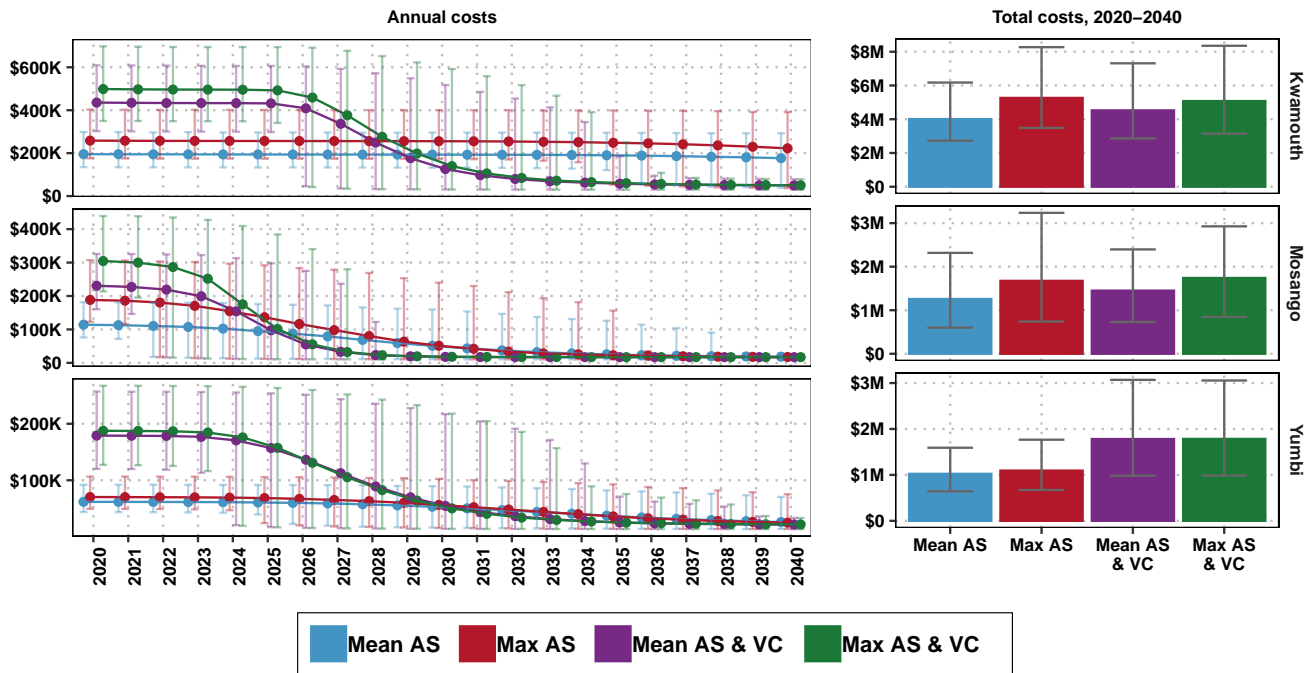


Fig. S4. Disability-adjusted life-years (DALYs) lost per strategy by location, 2020-2040. DALYs are not discounted. Estimates shown are means and their 95% predictive intervals (PI).

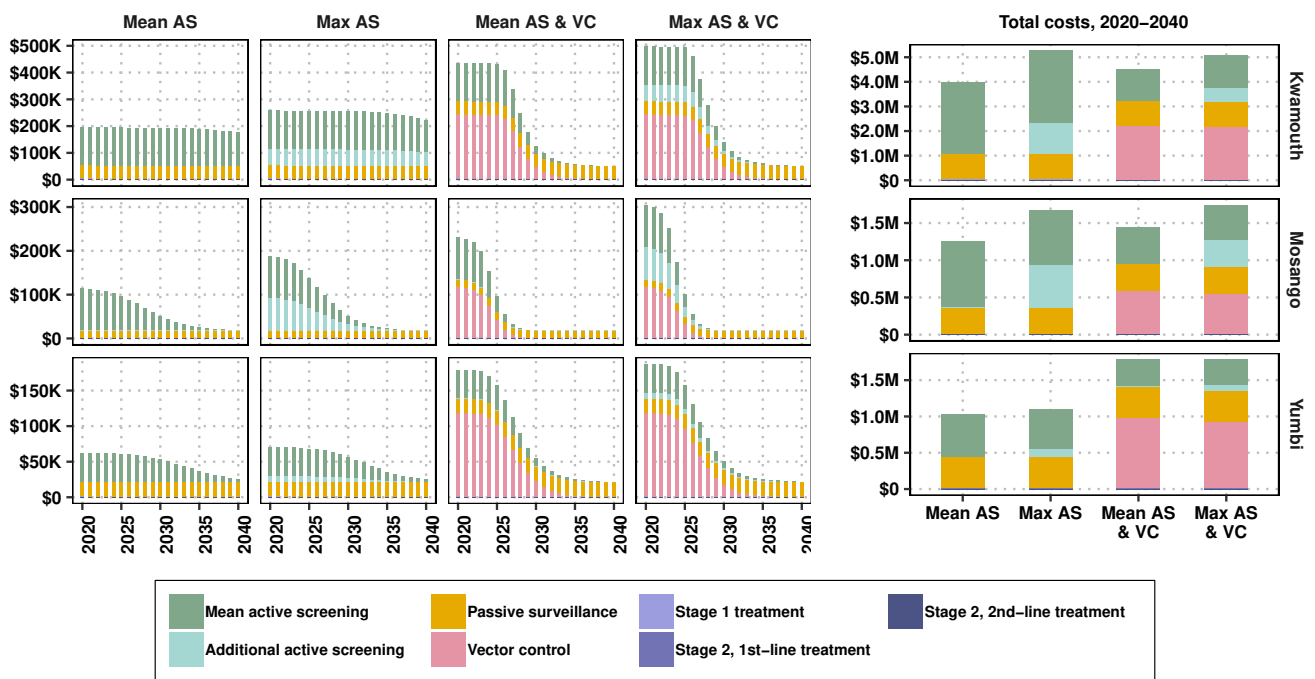


Fig. S5. Costs per strategy by location, 2020-2040. Costs are not discounted. Estimates shown are means and their 95% predictive intervals (PI).

176 **7. Incremental cost-effectiveness ratios, dominance, and weak dominance**

177 We show here a step-by-step calculation of incremental cost-effectiveness ratios (ICERs) in an effort to explain why a strategy is considered “weakly” dominated. Below is the calculation for Region 3 (Yumbi).

Table S16. Computing incremental cost-effectiveness ratios (ICERs) for Yumbi.

Strategy	ΔCost	ΔDALYs	Preliminary ICER	Final ICER
Mean AS	0	0	Minimum cost	Minimum cost
Max AS	62,000	81	765	765
Mean AS & VC	691,000	196	5,470	Weakly dominated
Max AS & VC	700,000	227	290	4,370

178 Preliminary ICERs show the difference in costs and effects between a given strategy and the next best strategy. Due to
 179 diminishing returns, ICERs increase with more ambitious interventions, as it takes more money to avert fewer and fewer DALYs.
 180 ICERs displayed in red indicate a strategy that yields a worse value-for-money than the next best intervention; these ICERs
 181 are ‘weakly dominated’ and should not be adopted. Final ICERs are calculated after weakly dominated strategies are omitted.
 182 ICERs highlighted in yellow are those that differ from initial ICERs due to the removal of weakly dominated strategies.
 183

184 Even if one were to be willing to pay \$6,000 per DALY for another health service, then the Max AS & VC strategy should
 185 be chosen over the Mean AS & VC strategy to achieve elimination and to stay efficient.

186 However, if the primary goal is to achieve elimination at the lowest cost, even if it is not efficient, then choose Mean AS &
 187 VC with the understanding that it is not the most efficient strategy in terms of cost-per-DALYs averted.

References

1. AA Stinnett, AD Paltiel, Estimating CE Ratios under Second-order Uncertainty. *Med. Decis. Mak.* **17**, 483–489 (1997).
2. AA Stinnett, J Mullahy, Net Health Benefits: A New Framework for the Analysis of Uncertainty in Cost-Effectiveness Analysis. *Med. Decis. Mak.* **18**, S68–S80 (1998).
3. JA Rushby, K Hanson, Calculating and presenting disability adjusted life years (DALYs) in cost-effectiveness analysis. *Heal. Policy Plan.* **16**, 326–331 (2001).
4. KP Claxton, et al., The Gates Reference Case for Economic Evaluation, (The Bill and Melinda Gates Foundation), Technical Report April (2014).
5. World Health Organization, *Making Choices in Health: WHO guide to cost-effectiveness analysis* eds. TTT Edejer, et al. (Geneva, Switzerland), (2003).
6. KS Rock, SJ Torr, C Lumbala, MJ Keeling, Predicting the Impact of Intervention Strategies for Sleeping Sickness in Two High-Endemicity Health Zones of the Democratic Republic of Congo. *PLoS Neglected Trop. Dis.* **11**, 1–17 (2017).
7. RE Crump, et al., Quantifying epidemiological drivers of gambiense human African Trypanosomiasis across the Democratic Republic of Congo. *medRxiv* (2020).
8. M Antillon, et al., Economic evaluation of gambiense human African trypanosomiasis elimination campaigns in five distinct transmission settings in the Democratic Republic of Congo. *medRxiv*, 2020.08.25.20181982 (2020).
9. CI Huang, et al., Shrinking the gHAT map : identifying target regions for enhanced control of gambiense human African trypanosomiasis in the Democratic Republic of Congo. *medRxiv* (2020).
10. F Checchi, F Chappuis, U Karunakara, G Priotto, D Chandramohan, Accuracy of five algorithms to diagnose gambiense human african trypanosomiasis. *PLoS Neglected Trop. Dis.* **5** (2011).
11. PR Bessell, et al., Cost-effectiveness of using a rapid diagnostic test to screen for human African trypanosomiasis in the Democratic Republic of the Congo. *PLOS ONE* **13**, e0204335 (2018).
12. WHO Department of Control of Neglected Tropical Diseases, WHO interim guidelines for the treatment of gambiense human African trypanosomiasis. (2019).
13. M Lehane, et al., Tsetse Control and the Elimination of Gambian Sleeping Sickness. *PLOS Neglected Trop. Dis.* **10**, e0004437 (2016).
14. NJ Mbewe, et al., Sticky small target: an effective sampling tool for tsetse fly *Glossina fuscipes fuscipes* Newstead 1910. *Parasites & Vectors* **11**, 268 (2018).
15. I Tirados, et al., Tsetse Control and Gambian Sleeping Sickness; Implications for Control Strategy. *PLOS Neglected Trop. Dis.* **9**, e0003822 (2015).
16. I Tirados, et al., Impact of Tiny Targets on *Glossina fuscipes quanzensis*, the primary vector of Human African Trypanosomiasis in the Democratic Republic of Congo. *bioRxiv*, 1–31 (2020).
17. MH Mahamat, et al., Adding tsetse control to medical activities contributes to decreasing transmission of sleeping sickness in the Mandoul focus (Chad). *PLoS Neglected Trop. Dis.* **11**, 1–19 (2017).
18. M Kagabadouno, et al., Ebola outbreak brings to light an unforeseen impact of tsetse control on sleeping sickness transmission in Guinea. *bioRxiv* (2018).
19. M Aliee, KS Rock, MJ Keeling, Estimating the time to extinction of infectious diseases in mean-field approaches. *medRxiv*, 2020.07.10.20150359 (2020).
20. WR Dowdle, The principles of disease elimination and eradication. *Bull. World Heal. Organ.* **76**, 22–25 (1998).
21. WHO Expert Committee on human African trypanosomiasis, Control and surveillance of human African trypanosomiasis: report of a WHO expert committee, Technical report (2013).
22. S Barrett, Economic considerations for the eradication endgame. *Philos. Transactions Royal Soc. B: Biol. Sci.* **368**, 20120149–20120149 (2013).
23. CJ Murray, Quantifying the burden of disease: The technical basis for disability-adjusted life years. *Bull. World Heal. Organ.* **72**, 429–445 (1994).
24. GBD 2017 DALYs and HALE Collaborators, Global, regional, and national disability-adjusted life-years (DALYs) for 359 diseases and injuries and healthy life expectancy (HALE) for 195 countries and territories, 1990–2017: A systematic analysis for the Global Burden of Disease Study 2017. *The Lancet* **392**, 1859–1922 (2018).
25. Liverpool School of Tropical Medicine, Use of Tiny Targets to control tsetse flies in Gambian HAT foci: standard operating procedures, Technical Report October (2016).