

# Supplemental Appendix: Penalized regression for left-truncated and right-censored survival data

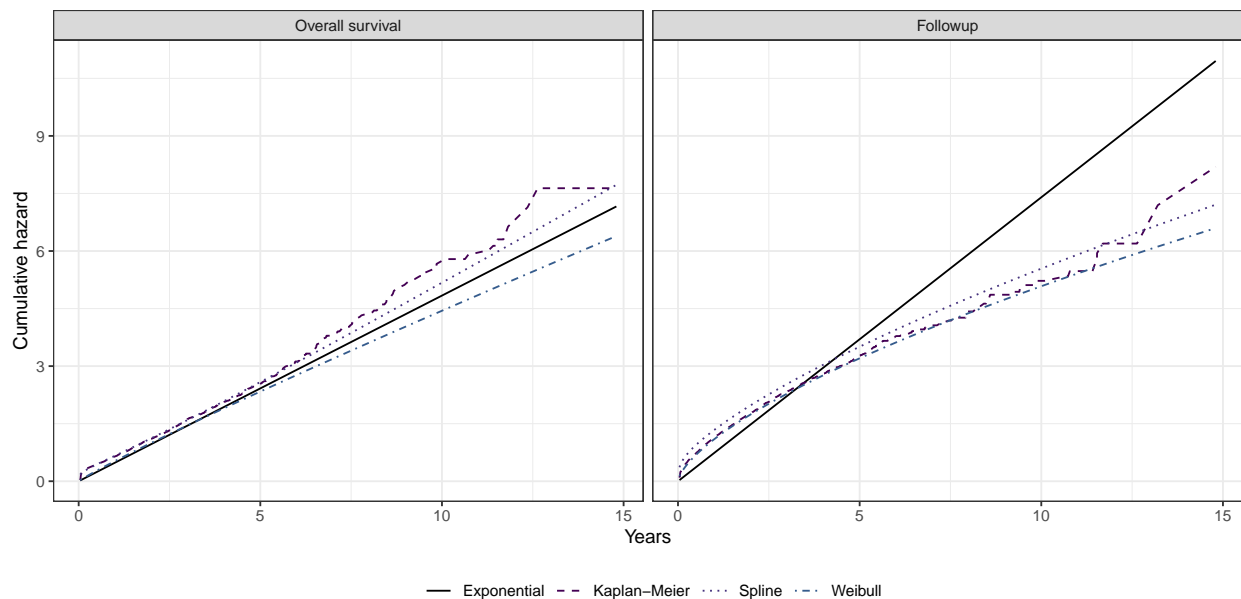
Sarah F. McGough<sup>\*1</sup>, Devin Incerti<sup>\*1</sup>, Svetlana Lyalina<sup>1</sup>, Ryan Copping<sup>1</sup>,  
Balasubramanian Narasimhan<sup>2, 3</sup>, and Robert Tibshirani<sup>2, 3</sup>

<sup>1</sup>Genentech, Inc, South San Francisco, CA, USA

<sup>2</sup>Department of Statistics, Stanford University, Stanford, CA, USA

<sup>3</sup>Department of Biomedical Data Science, Stanford University, Stanford, CA, USA

February 8, 2021

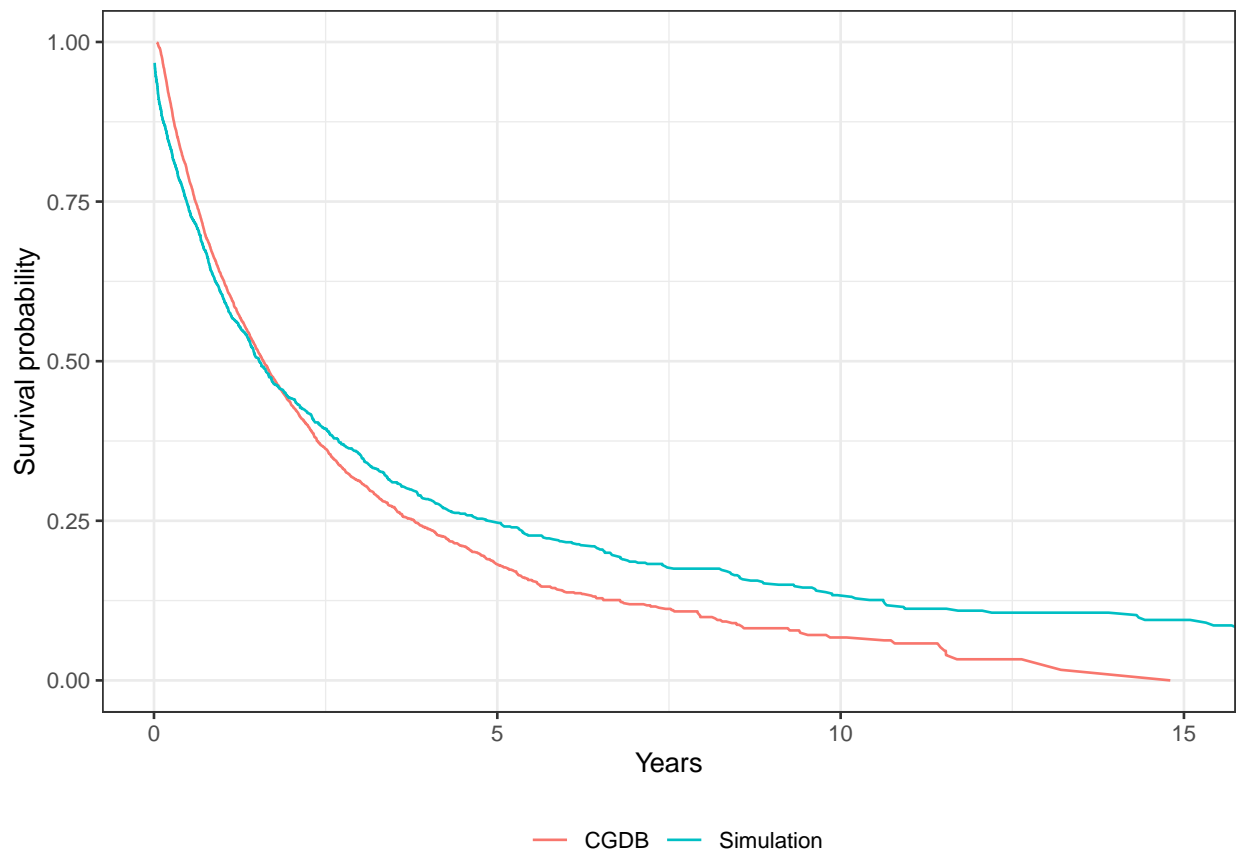


**Figure S1: Cumulative hazards among non-small cell lung cancer patients in the CGDB in models adjusting for right censoring and left truncation**

Notes: The left and right facets plot cumulative hazards for overall survival (i.e., time to death) and followup time (i.e., time to right censoring), respectively. Estimates in the rightmost plot use a “reverse Kaplan-Meier” approach whereby the meaning of an event and censoring are flipped. The spline models were fit with one internal knot at the median of the log of followup time.

---

\*Contributed equally.



**Figure S2: Kaplan-Meier plots of overall survival from models that adjust for right censoring but not left truncation in the simulated data and CGDB**

Notes: The simulated dataset was simulated using a Weibull model including the predictors described in the main text from the CGDB. Only non-truncated patients from the simulation were used for estimation.