

1 **Effects of Resistant Starch on Symptoms, Fecal Markers and Gut**
2 **Microbiota in Parkinson's Disease – The RESISTA-PD Trial**

3
4

5 Anouck Becker^{1,#}, Georges Pierre Schmartz^{2,#}, Laura Gröger^{3,#}, Nadja Grammes², Valentina
6 Galata², Hannah Philippeit¹, Jacqueline Weiland¹, Nicole Ludwig³, Eckart Meese³, Sascha
7 Tierling⁴, Jörn Walter⁴, Andreas Schwiertz⁵, Jörg Spiegel¹, Gudrun Wagenpfeil⁶, Klaus
8 Faßbender¹, Andreas Keller^{2,7,#}, Marcus M. Unger^{1,#,*}

9
10

11 ¹ *Department of Neurology, Saarland University, Homburg, 66421, Germany*

12 ² *Chair for Clinical Bioinformatics, Saarland University, Saarbrücken, 66123, Germany*

13 ³ *Department of Human Genetics, Saarland University, Homburg, 66421, Germany*

14 ⁴ *Department of Genetics/Epigenetics, Saarland University, Saarbrücken, 66123, Germany*

15 ⁵ *Institute of Microecology, Herborn, 35745, Germany*

16 ⁶ *Institute of Medical Biometry, Epidemiology and Medical Informatics, Saarland University*
17 *Homburg, 66421, Germany*

18 ⁷ *Department of Neurology, Stanford University, Palo Alto CA 94305, USA*

19
20

21 [#] Equal contribution

22
23

24 *** Corresponding author:**

25 E-Mail: marcus.unger@uks.eu (Unger MM)

26 Department of Neurology, Saarland University, Homburg, 66421, Germany,

27
28

29 **Running title:** *Becker A et al. / RESISTA-PD Trial*

30
31
32
33

- 34 **Count of letters in the article title: 100**
- 35 **Count of letters in the running title: 15**
- 36 **Word count:**
- 37 **Word count abstract: 222**
- 38 **Count of tables: 4**
- 39 **Count of figures: 5**
- 40 **Count of supplementary figures: 5**
- 41 **Count of supplementary tables: 3**
- 42 **Count of references: 51**
- 43 **Count of keywords: 5**

44 **Abstract**

45 The composition of the gut microbiome is linked to multiple diseases, including Parkinson's
46 disease (PD). Bacteria producing short-chain fatty acids (SCFAs) and fecal SCFA concentrations
47 are reduced in PD. SCFAs exert various beneficial functions in humans. In the interventional,
48 monocentric, open-label clinical trial RESISTA-PD (NCT02784145) we aimed at altering fecal
49 SCFAs by an 8-week prebiotic intervention with resistant starch (RS). We enrolled 87 subjects in
50 three study-arms: 32 PD patients receiving RS (PD + RS), 30 control subjects receiving RS, and
51 25 PD patients receiving solely dietary instructions. We performed paired-end 100 base pair
52 length metagenomic sequencing of fecal samples using the BGISEQ platform at an average of
53 9.9 GB. RS was well-tolerated. In PD + RS, fecal butyrate concentrations increased significantly
54 and fecal calprotectin concentrations dropped significantly after 8 weeks of RS. Clinically, we
55 observed a reduction in non-motor symptoms load in PD + RS. The reference-based analysis of
56 metagenomes highlighted stable alpha-diversity and beta-diversity across the three groups,
57 including bacteria producing SCFAs. Reference-free analysis suggested punctual, yet
58 pronounced differences in the metagenomic signature in PD + RS. RESISTA-PD highlights that
59 a prebiotic treatment with RS is safe and well-tolerated in PD. The stable alpha-diversity and
60 beta-diversity alongside altered fecal butyrate and calprotectin concentrations calls for long-term
61 studies, also investigating whether RS is able to modify the clinical course of PD.

62

63 **Keywords**

64 Parkinson Disease, Short-Chain Fatty Acids, Microbiota, Metagenomics, Intestinal Inflammation

65 Introduction

66 Gut microbiota composition is known to be altered in Parkinson's disease (PD) [1–3]. An
67 increased abundance of *Enterobacteriaceae* has been consistently described in fecal samples of
68 PD patients, whereas the abundance of *Prevotella*, *Faecalibacterium*, *Blautia*, and
69 *Bifidobacterium* is reduced in PD [1,4–8]. This is of potential relevance, since bacteria with anti-
70 inflammatory properties (e.g. synthesis of short-chain fatty acids, SCFAs) are less abundant,
71 while potentially pro-inflammatory bacteria (e.g. endotoxin containing species) are more
72 abundant in PD. Members of the family *Prevotellaceae*, *Ruminococcaceae*, and *Bacteroidaceae* are
73 capable of fermenting resistant starch (RS), a nutritional component which arrives in the large
74 intestine without previous degradation by human enzymes [9]. Anaerobic fermentation of RS
75 results in SCFAs, such as butyrate [10]. Butyrate exerts essential functions in the gut: it
76 represents the main energy source for enterocytes, enhances gut motility, and exerts
77 immunomodulatory effects [9,10]. Animal studies have shown that butyrate interacts with
78 colonic regulatory T-cells, creating an anti-inflammatory environment [11]. Consequently, a lack
79 of SCFA-producing bacteria and reduced colonic SCFA concentrations presumably lead to
80 reduced gut motility as well as to a shift in the intestinal immune system toward a more pro-
81 inflammatory environment [12]. Intestinal inflammation as well as altered gut motility (e.g.
82 constipation) have frequently been described in PD. In addition, we have previously shown that
83 PD patients have reduced fecal SCFA concentrations compared to matched controls [6].

84 With regard to techniques used to characterize the microbiome, 16S amplicon sequencing has
85 been most frequently used in microbiome studies due to its broad availability, the moderate costs
86 and the straightforward analysis. In recent years, whole genome sequencing (WGS) has become
87 widespread available. Compared to 16S amplicon sequencing, WGS requires more complex
88 computational and analytical procedures, but is superior in characterizing the metagenomic
89 landscape with regard to resolution, accuracy, and functional profiling [13,14]. To characterize
90 the metagenomic landscape, two different approaches can be used: Reference-free approaches
91 characterize the metagenomic landscape based solely on sequencing data. Reference-based
92 approaches rely on existing databases to compare the generated sequences against. In the present
93 study, we computed the taxonomic profile with reference-based approaches. In addition, we also
94 performed a comparative analysis with a hybrid approach named *BusyBee* [15], a software
95 combining both (i.e. reference-free and reference-based) approaches.

96 A sensitive and valid marker of intestinal inflammation is fecal calprotectin. Calprotectin is a
97 protein in human leukocytes. In case of inflammation, leukocytes migrate into the intestinal

98 lumen and calprotectin can be measured in the feces as a stable marker that reflects even
99 subclinical intestinal inflammation [16]. In accordance with the finding of prevailing pro-
100 inflammatory bacteria in PD, elevated fecal calprotectin concentrations have been described in
101 PD, too [17,18].

102 A prebiotic approach to increase SCFA concentrations is nutritional supplementation with RS.
103 The efficacy and tolerability of a 12-week intervention with RS has already been shown in a
104 controlled clinical trial for elderly subjects (≥ 70 years): RS was well-tolerated and, compared
105 with placebo, elderly subjects on RS showed an altered intestinal microbiota, an increase in fecal
106 butyrate concentrations, and a significant reduction in the use of laxatives [19].

107 Taken together, we set up the following hypothesis concerning a sequence of events: oral
108 supplementation with RS enhances SCFA synthesis in the gut, probably accompanied by a shift
109 in gut microbiota composition (due to a survival advantage for bacteria capable of fermenting
110 RS). Consequently, the increased SCFA concentrations should lead to improved gut motility
111 (improved constipation respectively) and a reduction in markers of intestinal inflammation.

112

113 **Results**

114

115 **The RESISTA-PD study cohort**

116 87 subjects participated in the RESISTA-PD trial. The study design and workflow illustrating
117 subjects' allocation to study-arms, clinical visits, sample collection, and analysis is summarized
118 in **Figure 1**. The majority of subjects (n = 76) completed the study per protocol. Median age was
119 64.5 years in the PD group receiving RS (PD + RS), 66 years in the PD group receiving dietary
120 instructions (PD + DI) group and 61.5 years in the control group receiving RS (Co + RS). There
121 was no significant difference regarding sex ratio between the groups. The majority of subjects
122 was on an omnivorous diet. Additional epidemiologic and clinical data are summarized in **Table**
123 **1**, detailed information regarding medication of the enrolled subjects is provided in
124 Supplementary Table 1. No major side effects were reported during the 8-week intervention with
125 RS.

126 **Gut microbiota composition differs between PD patients and controls at baseline**

127 At baseline, PD patients (n = 57) and controls (n = 30) showed no significant difference with
128 regard to alpha-diversity with neither of the two applied analytical tools (*MetaPhlan2* and
129 *mOTUs2*) (Supplementary Figure 1A and 1B). With regard to beta-diversity, we observed a
130 significant difference between PD patients and controls (p 0.001) with both analytical tools
131 applied in this study (Supplementary Figure 1C and 1D). With regard to specific taxa,
132 *Lachnospiraceae* species *incertae sedis* (mOTU_v25_12240, p 0.017) and *Faecalibacterium*
133 *prausnitzii* (mOTU_v25_06110, p 0.019) showed significantly reduced abundances after
134 correction for multiple testing in PD patients compared to controls (Supplementary Table 2).

135 **Figure 2** illustrates descriptive differences at different taxonomic levels between PD patients and
136 controls prior to the intervention. Descriptively, taxa of the phylum *Firmicutes* showed higher
137 abundances in controls (except for the class *Bacilli*), while most taxa of the phyla
138 *Proteobacteria*, especially *Enterobacteriaceae*, were more abundant in PD.

139 **Intervention with resistant starch alters symptoms load and fecal markers in PD**

140 We next analyzed intervention-associated changes in subject-reported symptoms and in fecal
141 markers. We observed a significant improvement with regard to non-motor symptoms (measured
142 by the Non-Motor Symptoms Questionnaire score, p 0.001) and a significant improvement with
143 regard to depressive symptoms (assessed by the Beck Depression Inventory, p 0.001) between
144 baseline and 8 weeks in the PD + RS group (**Table 2**, Supplementary Figure 2a). No significant
145 changes in these parameters were identified over the 8-week intervention period for PD + DI or

146 Co + RS. There was no significant change in bowel habits (assessed with the Constipation
147 Scoring System) between baseline and 8 weeks for any of the three investigated groups (**Table 2**,
148 Supplementary Figure 2a). Calprotectin concentrations dropped significantly between baseline
149 and 8 weeks (p 0.023, **Table 3**, Supplementary Figure 2b) in PD + RS. No significant changes in
150 fecal calprotectin concentrations were observed between baseline and 8 weeks in the two other
151 groups (i.e. Co + RS and PD + DI). Concerning fecal SCFAs, the concentration of the SCFA
152 butyrate increased significantly in PD + RS between baseline and 8 weeks (for absolute fecal
153 butyrate concentrations (p 0.029) as well as for relative fecal butyrate concentrations (p 0.026,
154 **Table 4**, Supplementary Figure 2c). There were no significant changes for SCFAs other than
155 butyrate between baseline and 8 weeks in PD + RS and no significant changes regarding SCFA
156 concentrations in the two other groups (i.e. Co + RS and PD + DI).

157 **Reference-based analysis shows a stable gut microbiome after RS intervention**

158 In order to investigate whether the observed changes in clinical symptoms and fecal markers are
159 associated with an intervention-associated shift in the gut microbiome, we performed
160 metagenomic sequencing. Quality control by FastQC indicated good data quality of
161 metagenomic sequencing. During preprocessing, less than one percent of reads was removed for
162 each sample. Additionally to the standard quality control, we analyzed pairwise *Mash distances*
163 [20] between all samples. Hereby, the *Mash distance* gauges similarity between sequencing
164 libraries using only sequence features directly derived from raw reads. Visualizing *Mash*
165 *distances* shows that samples derived from the same individual frequently produce the lowest
166 *Mash distance*, indicating correct labeling of samples and a lack of contamination (**Figure 3**). No
167 intervention-associated changes with regard to either alpha-diversity or beta-diversity were
168 detected for any of the three investigated groups (PD + RS, PD + DI, Co + RS). No significant
169 intervention-associated changes were also detected concerning differences in distinct taxa
170 (Supplementary Table 2). Non-metric multidimensional scaling (NMDS) visualizing microbiome
171 shifts did not reveal uniform shifts associated with the intervention (Supplementary Figure 3).

172 **Reference-free analysis points at punctual differences in the metagenomic signature**

173 Reference-free analysis revealed intervention-associated changes in taxonomic signatures in PD
174 + RS (**Figure 4**). The majority (>54%) of contigs forming one of the three clusters in the
175 reference-free analysis derived from the genus *Rhodococcus* (Supplementary Figure 4). Density
176 changes worth interpreting as clusters identified in the other cohorts (Co + RS and PD + DI) did
177 not contain significant amounts of *Rhodococcus* sequences.

178 **Distinct microbial signatures are associated with fecal butyrate concentrations**

179 In metagenomic samples, the change in abundance of one taxon is likely to entail changes in the
180 abundance of other taxa. We investigated our data for data compositionality using the *selbal*
181 algorithm. *Selbal* searches for two groups of taxa whose relation (or balance) is associated with a
182 certain response variable. The relationship is modeled as linear or logistic regression model of
183 the taxa on the response variable. *Selbal* builds multiple models containing different taxa
184 combinations and evaluates their performance using cross-validation. In our dataset, response
185 variables were measurements of acetate, propionate, butyrate, valerate, calprotectin, as well as
186 CSS and BDI scores. Using the *selbal* algorithm, results for *MetaPhlAn2* (**Figure 5A and 5B**)
187 and for *mOTUs2* data (**Figure 5C and 5D**) and butyrate concentrations as response variable
188 were highly consistent. For absolute butyrate concentrations, *selbal* detected that higher
189 abundances of *Fusicatenibacter saccharivorans* to *Ruthenibacterium lactatiformans* were
190 associated with higher absolute butyrate concentrations (**Figure 5A**) with an association slightly
191 below moderate (*MetaPhlAn2* data, $R = 0.35$). The association of *Ruthenibacterium*
192 *lactatiformans* with butyrate concentrations was verified by *mOTUs2* data (**Figure 5C**). Here,
193 *selbal* detected that a higher abundance of *Lachnospiraceae* and *Streptococcus parasanguinis* to
194 *Ruthenibacterium lactatiformans* was associated with higher absolute butyrate concentrations.
195 The association was moderate ($R = 0.44$). For relative butyrate concentrations, *selbal* detected
196 that a higher abundance of *Dorea longicatena* (*MetaPhlAn2* data) and *Blautia wexlerae*
197 (*MetaPhlAn2* and *mOTUs2* data) with respect to *Ruthenibacterium lactatiformans* (*MetaPhlAn2*
198 and *mOTUs2* data) was associated with higher butyrate concentrations (**Figure 5B and 5D**). The
199 association was moderate ($R = 0.48$ for *MetaPhlAn2*, $R = 0.5$ for *mOTUs2*). The model itself was
200 stable, with *Ruthenibacterium lactatiformans* and *Dorea longicatena* being included in over 95%
201 of all models (*MetaPhlAn2*) and *Blautia wexlerae* and *Ruthenibacterium lactatiformans* being
202 included in over 96% of all models (*mOTUs2*). Other response variables did not show a
203 consistency between *mOTUs2* and *MetaPhlAn2* data.

204 **Functional profiling reveals no intervention-associated difference**

205 In order to identify differences in the available metabolic pathways, we applied the *HUMAN2*
206 tool to our data. The estimated pathway abundances were used for an exploratory data analysis
207 of the samples using principal component analysis (PCA) and a differential analysis using
208 *ALDEx2*. The PCA projection indicated a different tendency between the PD and the control
209 groups, but no differences associated with the intervention (baseline vs. 8 weeks)
210 (Supplementary Figure 5). The analysis with *ALDEx2* did not result in any pathway that showed
211 a significant difference between groups nor a difference between baseline and 8 weeks
212 (Supplementary Table 3).

213 Discussion

214 Gut microbiota composition is altered in PD [3–6] and might be a contributing factor for
215 gastrointestinal non-motor symptoms (e.g. constipation) in PD. Having recognized the relevance
216 of the intestinal microbiome in PD, probiotics have been investigated in PD and other
217 neurodegenerative diseases previously [21,22] and prompted us to perform the RESISTA-PD
218 trial.

219 In accordance with other studies in the field [2,4,5,7,23,24], we observed a difference between
220 PD patients and controls at baseline regarding beta-diversity. With regard to specific taxa, we
221 detected significantly different abundances for two taxa after correction for multiple testing:
222 abundances for *Lachnospiraceae* species *incertae sedis* and *Faecalibacterium prausnitzii* were
223 significantly reduced in the fecal samples of PD patients. *Lachnospiraceae* as well as
224 *Faecalibacterium prausnitzii* have already been reported to be reduced in PD and have also been
225 confirmed as altered taxa in PD in a recent meta-analysis [25]. Indeed, the lower abundance of
226 *Faecalibacterium prausnitzii* might be one explanation for the lower fecal butyrate
227 concentrations in PD. On a descriptive level, we also reproduced some other previously reported
228 alterations of gut microbiota in PD, e.g. a lower abundance of *Firmicutes* and a higher
229 abundance of *Proteobacteria*, especially *Enterobacteriaceae*.

230 For the reference-free analysis of intervention-associated changes, a metagenomic signature
231 indicating a possible involvement of *Rhodococcus* was found in PD + RS, despite an
232 insignificant change in abundance during the read-based analysis. The blue cluster (top right) in
233 the CO + RS group contained only sequences derived from one single sample. Sequences were
234 assigned to *Rhodotorula toruloides*. The two clusters with the highest density in the PD + DI
235 group contained no sequences of the genus *Rhodococcus* (blue cluster) and less than 0.001 % of
236 sequences (red cluster) of the genus *Rhodococcus*.

237 The reference-free workflow we selected discards all quantity information after assembly. In
238 an optimal scenario, sequences derived from identical genetic information will be collapsed into
239 the same contig in each sample. In *BusyBee* one such contig will appear as one individual point
240 with close to no impact on the overall density distribution. The strong signal from the high-
241 density cluster in PD + RS suggests the existence of multiple contigs that were dissimilar enough
242 not to be collapsed during assembly, yet qualitatively good enough to be assigned to
243 *Rhodococcus*. Accordingly, the change in density of the investigated cluster indicates a more
244 complex behavior than a quantitative balance shift. Instead, an increase in genomic diversity may
245 be postulated from this observation. The relevance of this particular finding remains unclear and

246 requires further investigations, especially since the genus *Rhodococcus* is not a typical
247 representative of the human gut microbiota. Given the fact that bacteria of the genus
248 *Rhodococcus* are not typically part of the human gut microbiota and also are obligate aerobes,
249 the identification of this genus in human fecal samples points at a potential contamination.
250 Indeed, *Rhodococcus* has been identified in human biosamples due to DNA contamination of
251 reagents [26]. Yet, DNA contamination is mainly a problem when analyzing low microbial
252 biomass samples (like blood or saliva). In our study that analyzed high microbial biomass
253 samples (feces), contamination is further unlikely as contamination would have occurred solely
254 in PD + RS samples after the intervention and not in the other two groups. One might also
255 hypothetically consider contamination of a single batch of reagents or tubes used in our study.
256 However, samples were analyzed in a random way and not sorted by group prior to analysis.
257 Hence, contamination can hardly explain this finding. As the taxonomic assignment of contigs
258 relies on libraries, misassignment due to similar sequences of another taxon (not represented in
259 libraries) with sequences of *Rhodococcus* should also be considered.

260 Our finding that a prebiotic intervention with RS significantly alters fecal butyrate
261 concentrations and significantly reduces fecal calprotectin concentrations is also in line with a
262 controlled clinical trial that investigated RS in mid-age and elderly subjects and reported an
263 increase in fecal butyrate concentrations in subjects aged 70 years or older [19]. While the study
264 by Alfa and colleagues [19] even indicated a therapeutic effect (reduction in the use of
265 laxatives), we did not observe a significant improvement of bowel habits. This divergent
266 observation between our study and the study by Alfa and colleagues might be due to different
267 types of RS (we used RS type 3, Alfa and colleagues used RS type 2), the dose of RS (Alfa and
268 colleagues administered approximately double the dosage compared to our study), and the
269 duration of the interventional period (8 weeks in our study versus 12 weeks in the study by Alfa
270 and colleagues).

271 Fecal butyrate concentrations and calprotectin concentrations were not altered when PD
272 patients solely underwent nutritional counseling including dietary instruction concerning a fiber-
273 rich diet (PD + DI). Considering the fact that the PD + DI group underwent the same visit
274 schedule as the PD + RS group, the effect observed with regard to clinical measures in PD + RS,
275 is unlikely to be completely due to unspecific effects such as attention paid to subjects during
276 clinical visits or answering questionnaires according to social desirability.

277 The effect on symptoms related to depression in the PD + RS group might be explained by the
278 observed increase in butyrate concentrations. An association between gut microbiota and
279 depressive symptoms has been described previously [27, 28]. Administration of SCFA, including

280 butyrate, has shown to reduce depressive symptoms in mice [29]. Moreover, fecal SCFA have
281 been shown to be reduced in a cohort of female patients with depression [30]. Increasing
282 evidence suggests a connection between depressive symptoms and fecal SCFA concentrations
283 [31]. One explanation for the lack of a change in clinical measures in the PD + DI group might
284 be that adherence to dietary instructions is likely to be lower compared to the more convenient
285 approach of consuming a dietary supplement (dissolved in one glass of water) twice a day. In
286 addition, changes in dietary habits are much more heterogeneous compared to a standardized
287 nutritional supplementation.

288 The fact that Co + RS did not show a reduction in fecal calprotectin concentrations is likely to
289 be explained by already normal calprotectin concentrations in control subjects at baseline. The
290 unchanged SCFA concentrations in Co + RS might be either explained by a ceiling effect or by a
291 lower adherence (as controls did not expect to benefit from the intervention).

292 Even though the effects on fecal calprotectin and fecal butyrate were significant in PD + RS
293 and also SCFAs other than butyrate showed a trend towards an increase in concentrations in the
294 PD + RS group, our data lack a clear-cut correlate concerning specific gut microbiota. Assuming
295 that gut microbiota composition remained stable despite the prebiotic intervention, an altered
296 transcription might have led to the observed effects on fecal markers. The lack of a clear-cut
297 response to the intervention with regard to gut microbiota or symptoms of constipation might
298 also be due to various individual factors. Our study design controlled for confounding factors
299 like age, sex, overall type of diet, comorbidities, and medication. Nevertheless, the investigated
300 cohorts were heterogeneous (even within groups) with regard to other, more complex factors that
301 might determine the individual response (e.g. composition of the gut microbiome prior to the
302 intervention, adherence to the recommended RS intake, more specific dietary habits). This said,
303 the limited sample size in this proof of concept study together with the inter-individual
304 variability concerning potential confounding factors is one explanation for the heterogeneous
305 response to the intervention. Hence, larger cohorts (as well as transcriptomics and proteomics)
306 might have been necessary to detect more subtle intervention-associated alterations in the gut
307 microbiome (and possible changes at the transcriptomic level).

308 In order to identify microbial signatures associated with SCFA concentrations, we performed
309 an *in silico* analysis (using the *selbal* algorithm): Balance analysis of taxa and butyrate
310 concentrations resulted in concordant results for both analytical tools (*mOTUs2* and
311 *MetaPhlan2*). Moreover, we confirmed the robustness of the identified balance scores by their
312 frequency in a cross-validation model. The microbial taxa *Blautia wexlerae*, *D. longicatena* and
313 *Ruthenibacterium lactatiformans* are involved in butyrate-related pathways [32]. However, all of

314 these bacteria are not capable of directly producing butyrate from RS, but they produce lactate
315 and succinate by fermentation which consecutively serve as substrates for other bacteria which
316 produce butyrate [10]. Despite the fact that our *in silico* approach did not detect classical SCFA
317 producers (like *Faecalibacterium* or *Roseburia*) as determinants for fecal butyrate
318 concentrations, the taxa identified by *selbal* are indirectly involved in butyrate production (via
319 complex interactions with other taxa) [10].

320 In contrast to our initial hypothesis, symptoms related to constipation (a frequent non-motor
321 symptom in PD) were not significantly altered during the 8-week-intervention. As there was at
322 least a descriptive decline in CSS scores after RS supplementation, we suggest longer
323 interventional periods and increased doses of RS to test such a symptomatic effect on bowel
324 habits. Given that RS was well-tolerated in the RESISTA-PD trial, this seems to be a feasible
325 and rational approach.

326 Besides the limited sample size and the relatively short interventional period, one main
327 limitation of the RESISTA-PD trial is its open-label study design. We aimed at counteracting
328 this shortcoming by including an additional PD control-arm (PD + DI) to control for unspecific
329 effects (as discussed above). Adherence to the intervention was checked by patient diaries but
330 not by more objective measures. Probably, internal motivation to adhere to the study protocol
331 might have been higher in PD + RS compared to Co + RS (as discussed above). The primary aim
332 of the RESISTA-PD trial was to test the feasibility, tolerability and efficacy of this prebiotic
333 approach. Hence, our study protocol did not include an additional measurement of the
334 investigated markers several weeks after withdrawal of RS. We suggest to include such an
335 assessment in future studies.

336 At this time, we are not able to answer the question whether the observed anti-inflammatory
337 effects indicated by the decline in fecal calprotectin concentrations is mediated by the increase in
338 butyrate concentrations. Even though other studies endorse such an assumption [11], further
339 studies are needed to clarify the exact mechanisms of this prebiotic intervention and the increase
340 in SCFAs in details.

341 A general limitation of interventions aiming at altering the gut microbiome is the question of
342 endurance. This is why long-term studies and assessment of subjects after withdrawal of the
343 intervention are mandatory to draw final conclusions.

344 **Conclusions**

345 RS, as a dietary supplement to increase fiber intake, is safe and well-tolerated in PD. RS
346 supplementation partially restores fecal SCFA concentrations in PD + RS without clear-cut
347 changes in the gut microbiome that were attributable to the intervention. Alterations at the

348 transcriptome level (that were not captured by our approach) might explain the intervention
349 associated significant increase in fecal markers in the PD + RS group.

350 In view of the good tolerability of RS, we suggest long-term studies with RS. These studies
351 should also aim at clarifying the underlying mechanisms for the supposed anti-inflammatory
352 effects. Based on the assumption of an RS-associated anti-inflammatory effect, these studies
353 should also investigate whether RS supplementation is able to modify the clinical course of PD.

354 **Methods**

355 **Study design and registration**

356 The interventional study “Effects of **resistant Starch** on bowel habits, short-chain fatty acids and
357 gut microbiota in **P**arkinson’s **d**isease” (RESISTA-PD) is a monocentric, prospective, open-label
358 clinical trial investigating the effects of an 8-week prebiotic intervention with the dietary
359 supplement RS (5 g RS twice a day orally) in PD patients (PD + RS) and matched controls (Co +
360 RS). As a third study-arm, PD patients who received solely dietary instructions (PD + DI) were
361 enrolled in this study. Dietary instructions were based on the “Food-Based Dietary Guidelines in
362 Germany” (for further reference see [https://www.dge-medienservice.de/food-based-dietary-](https://www.dge-medienservice.de/food-based-dietary-guidelines-in-germany.html)
363 [guidelines-in-germany.html](https://www.dge-medienservice.de/food-based-dietary-guidelines-in-germany.html)) of the German Nutrition Society. At baseline visit, the specified
364 guidelines to support a health-promoting diet were explained to all subjects in the PD + DI
365 group. These recommendations support a diet rich in whole-grain products and vegetables and a
366 moderate consumption of fat and animal products. Subjects also received a leaflet summarizing
367 these recommendations. This leaflet included a table with practical orientation values for each
368 food group (e.g. cereal products and potatoes; vegetable and salad; fruit; etc.). Primary outcome
369 measures were: change (prior vs. post intervention) in a) bowel habits, b) fecal SCFA
370 concentrations, and c) gut microbiome (analyzed by whole genome-wide sequencing).
371 Secondary outcome parameters were: differences in gut microbiome at baseline (between PD
372 patients and controls), change (prior vs. post intervention) in clinical scales, and change in fecal
373 calprotectin concentrations (prior vs. post intervention).

374 **Subjects**

375 57 PD patients and 30 control subjects were enrolled. PD patients were assigned to two different
376 interventional groups: PD + RS (n = 32) received 5 g RS twice per day orally over a period of 8
377 weeks; PD + DI (n = 25) received dietary instructions concerning high fiber intake, but no RS
378 supplementation. Control subjects (Co + RS, n = 30) received 5 g RS twice per day orally over a
379 period of 8 weeks. Main inclusion criteria were an age > 18 years, diagnosis of PD (respectively
380 absence of PD or any other neurodegenerative disorder in the control group), capacity to give
381 written informed consent. Main exclusion criteria were use of antibiotics, steroids, antimycotics
382 or probiotic supplements (during the last 12 weeks), chronic or acute disorders of the
383 gastrointestinal tract (other than constipation), a history of colonoscopy within the past 12 weeks,
384 a history of gastrointestinal surgery (other than appendectomy) within the past three years.

385

386

387 **Clinical assessments**

388 Subjects were assessed at baseline, after 4 weeks and after 8 weeks. Baseline assessment was
389 performed as in-person clinical visit. Assessments after 4 weeks, 8 weeks respectively, were
390 performed as telephone visits. At baseline visit, subjects underwent rating with the Unified
391 Parkinson's disease rating scale (UPDRS) [33] and the Mini Mental-Status-Test (MMST) [34].
392 Symptoms related to constipation were assessed at each of the three visits (baseline, 4 weeks, 8
393 weeks) with the Constipation Scoring System (CSS) [35]. Non-motor symptoms were assessed
394 with the Beck Depression Inventory (BDI) [36] and the Non-Motor Symptoms Questionnaire
395 (NMSQ) [37] at baseline visit and after 8 weeks. In addition to collecting data on adverse events,
396 tolerability and subjective improvement of the intervention was assessed in analogy to the seven-
397 point Clinical Global Impression - Improvement (CGI-I) [38] scale after 4 and 8 weeks. Clinical
398 change was rated (compared to baseline, prior to the intervention with RS respectively) as either
399 very much improved; much improved; minimally improved; no change; minimally worse; much
400 worse or very much worse.

401 **Collection of fecal samples**

402 At baseline visit, all subjects received sterile containers (P/N S1000-150 and P/N H9550T,
403 Suesse, Gudensberg, Germany) for collection of fecal samples at home. The containers were
404 labeled with the subject-ID and the scheduled time for collection (baseline, i.e. prior to first
405 intake of resistant starch; 4 weeks of resistant starch; 8 weeks of resistant starch). All subjects
406 were instructed how to collect the fecal samples at home and received a leaflet containing
407 relevant information for sample collection. Subjects were instructed to send in two samples
408 (collected on two consecutive days) for each time point. For metagenomics, the first baseline-
409 sample and the first 8-week sample were used, for quantitative analysis of fecal markers. The
410 mean of the two samples was calculated for further statistical analysis. In case of missing 8-week
411 samples, 4-week samples were analyzed (last observation carried forward, LOCF) as described
412 below (see *Statistical analysis of clinical data and fecal SCFA and calprotectin concentrations*).
413 All subjects were reminded by telephone to send in samples after 4 weeks and after 8 weeks.
414 Stool samples were sent to the Institute of Microecology, Herborn, Germany, and immediately
415 frozen at minus 35° C until analysis.

416 **Measurement of fecal short-chain fatty acid and calprotectin concentrations**

417 Quantitative analyses of fecal SCFAs and calprotectin were carried out by the Institute of
418 Microecology, Herborn, Germany. All persons involved in these analyses were blinded to
419 clinical data and the diagnosis of the subjects. Fecal SCFAs were measured by gas

420 chromatography, fecal calprotectin was measured by enzyme-linked immunosorbent assay as
421 previously described [6,18].

422 **DNA isolation**

423 DNA from fecal samples was isolated using a DNeasy PowerSoil Kit (P/N 47014, QIAGEN,
424 Hilden, Germany) according to the manufacturer's instructions. To ameliorate the purity, we
425 performed precipitation of the DNA in presence of sodium acetate (pH 5,5) and cold 100 %
426 ethanol at minus 20° C for at least overnight. The DNA was then centrifuged, washed with 80 %
427 ethanol once, and centrifuged another time. The pellet was air-dried and resuspended in TE
428 buffer. DNA concentration was measured using a Nanodrop 2000 spectrophotometer (P/N ND-
429 2000, Thermo Fisher Scientific, Waltham, MA).

430 **Metagenomic sequencing**

431 DNA libraries were prepared using the MGIEasy DNA Library Prep Kit (P/N 940-200022-00,
432 MGI Technologies, Shenzhen, China) according to manufacturer's recommendations. In general,
433 1 µg of input DNA was sheared into fragments using the M220 Focused-ultrasonicator (P/N
434 500295, Covaris, Woburn, MA). Size selection was carried out using Agencourt AMPure XP
435 beads (P/N A63882, Beckman Coulter, Krefeld, Germany). 50 ng of fragmented DNA were used
436 for end-repairing and A-tailing followed by ligation of barcode containing adaptors to the 3'- and
437 5'-end. The ligation products were amplified by PCR. A total of 16 different barcoded samples
438 were pooled in equal amount and circularized using a specific oligo sequence, which is
439 complementary to the sequences in the 3'- and 5'-adaptors. DNA nanoballs (DNBs) were
440 generated by rolling circle amplification (RCA), and loaded onto a flowcell using BGIDL-50
441 DNB loader. Paired-end sequencing was performed according to the BGISEQ-500RS High-
442 throughput Sequencing Set for PE100 on the BGISEQ-500RS instrument (P/N 940-100037-00,
443 MGI Technologies).

444 **Statistical analysis of clinical data and fecal SCFA and calprotectin concentrations**

445 In case of missing data for 8 weeks and available data for 4 weeks, we applied the last
446 observation carried forward (LOCF) method. LOCF was used for 4 subjects (PD + RS (n = 3)
447 and PD + DI (n = 1)) to replace missing 8-week data concerning fecal markers. Concerning
448 clinical scores, missing 8-week data of 5 subjects (PD + RS (n = 2), PD + DI (n = 1) and Co +
449 RS (n = 2)) was replaced by 4-week data. Normal distribution of data was tested using Shapiro-
450 Wilk's test. Statistical significance was assumed for $p \leq 0.05$. Difference between groups was
451 tested using Mann-Whitney-U-test. Comparisons of the same group at different timepoints was
452 performed with the Wilcoxon's test for paired samples and sign test for paired samples. Pre-

453 defined outcome measures were not adjusted for multiple testing. Spearman's correlation
454 coefficient was used to analyze correlations between parameters.

455 **Sequencing Data Analysis**

456 *Preprocessing.* *FastQC* (version 0.11.8) was used to validate sequence quality and the reports
457 were summarized using *multiQC* (version 1.7) [39]. Adapter contamination was controlled with
458 the *Minion tool* from the *Kraken package* (version 16.098) [40]. None of the samples showed
459 adapter contamination. Trimming and host contamination removal were conducted using
460 *KneadData* (version 0.7.2) (<https://huttenhower.sph.harvard.edu/kneaddata/>. Accessed 30 Aug
461 2020) [41].

462 *Read-based analysis.* Taxonomic composition of the samples was profiled using *mOTUs2*
463 (version 2.5.0) [42] as well as *MetaPhlan2* (2.9.19) [43]. Both methods are marker-based and
464 were used to profile all taxonomic levels. Functional profiling was conducted using *HUMAN2*
465 (version 2.8.1) [44]. The *R-package phyloseq* (version 1.28.0) [45] was used to plot the relative
466 abundances in each sample at different taxonomic levels, ranging from kingdom to species.
467 Alpha-diversity was computed using multiple measurements for each sample. The distributions
468 of the alpha-diversity values were compared between patient groups for the same timepoint and
469 between timepoints for the same patient group. Beta-diversity was calculated using the Bray-
470 Curtis distance. Differential abundance analysis was performed by comparing the taxa
471 abundance between groups at the same timepoint and within groups for different timepoints
472 using the R-package *ALDEx2* (version 1.14.1) [46]. *Metacoder R-package* [47] was used to
473 visualize differences in taxa abundance between PD patients and controls. Regression-based
474 balance analysis of the taxa was done using the R-package *selbal* (version 0.1.0) [48]. For
475 analysis with the *selbal* algorithm, we included all samples and all timepoints. Mash distances
476 were computed on the preprocessed reads using *Mash 2.1.1* [20].

477 *Reference-free analysis.* Reference-free analysis closely resembled the *BusyBee* workflow [15],
478 which is centered around k-mers. *De novo* assembly was performed using *SPAdes* (version
479 3.13.1) [49] for all samples with matching baseline and 8-week follow-up dataset. The obtained
480 contigs were filtered by length and sequences shorter than 5000 bases were discarded. Of these
481 filtered sequences longer than 5000 bases, 5-mers and reverse complement 5-mers distributions
482 were computed. Samples were then pooled and a uniform manifold approximation and projection
483 (UMAP) was computed [50]. The embedded datapoints were then reassigned to their respective
484 group-timepoint combination. Contigs for further analysis were taken from the PD+RS group
485 lying within the UMAP coordinates $16.8 < X < 18.2$ and $7.5 < Y < 11$. Remaining contigs were

486 analyzed with *BusyBee*. The reported taxonomic assignment of the filtered contigs was computed
487 with *CAT/BAT* (version 5.0.3) [51].

488 **Figure legends**

489

490 **Figure 1 Study design**

491 Subjects were assigned to three different study-arms. One group of Parkinson patients and a
492 control group received 5 g resistant starch twice a day for a total period of 8 weeks. A second
493 group of Parkinson patients solely received dietary instructions. Fecal samples and clinical
494 scores were collected at baseline, after 4 weeks, and after 8 weeks for analysis. + RS in the
495 pictograms visualizes subjects receiving resistant starch, - RS in the pictograms visualizes
496 subjects not receiving resistant starch.

497

498 **Figure 2 Taxonomic tree illustrating differences between PD patients and controls at**
499 **baseline**

500 Figure 2 shows a taxonomic tree illustrating the number of operational taxonomic unit (OUT)
501 counts per taxon (visualized by the size of the radius) and the difference (visualized by color)
502 between Parkinson's disease (PD) patients and controls prior to intervention (baseline). Yellow
503 shades indicate a higher abundance in PD patients, blue shades indicate a higher abundance in
504 controls, grey shades indicate no group-specific differences. Low abundance taxa were pruned
505 [47].

506

507 **Figure 3 Intra-individual and inter-individual similarity of samples**

508 Similarity of samples visualized as *Mash distance* plot. The lower the *Mash distance*, the higher
509 the similarity of samples. Red diamonds represent paired samples (baseline and 8 weeks) of one
510 subject. Dots represent samples of other subjects (unpaired). **A** Parkinson's disease patients
511 receiving resistant starch (+ RS), **B** control subjects receiving RS (+ RS) and **C** Parkinson's
512 disease patients receiving solely dietary instruction, but no resistant starch (- RS).

513

514 **Figure 4 Reference-free analysis points at punctual differences**

515 Figure 4 shows the density distribution of the 5-mers, after dimensionality reduction with
516 uniform manifold approximation and projection. The first row contains the baseline. The second
517 row shows the 8-week follow-up. In the bottom row the difference between the two previous
518 rows is visualized; blue indicates a stronger signal at baseline, red indicates a stronger signal at 8
519 weeks follow-up. + RS indicates the two groups receiving resistant starch, - RS indicates the
520 group not receiving resistant starch.

521 **Figure 5 Distinct microbial signatures are associated with fecal butyrate concentrations**

522 Balance scores for *MetaPhlan2* (5A, 5B) and *mOTUS2* (5C, 5D) data with absolute butyrate
523 concentrations (5A, 5C) and relative butyrate concentrations (5B, 5D) as response variables.

524

525

526 **Tables**

527

528 **Table 1 Epidemiological and clinical characteristics of the enrolled subjects**

529

530 **Table 2 Scores on clinical scales at baseline and post intervention**

531

532 **Table 3 Fecal calprotectin concentrations at baseline and post intervention**

533

534 **Table 4 Short-chain fatty acid concentrations at baseline and post intervention**

535

536

537

538

539 **Supplementary material**

540

541 **Supplementary figure legends**

542

543 **Supplementary Figure 1 Alpha-diversity and beta-diversity at baseline**

544 Supplemental Figure 1 shows measures of alpha-diversity and beta-diversity at baseline between
545 PD patients and controls (**1A** alpha-diversity for *MetaPhlan2* data, **1B** alpha-diversity for
546 *mOTUs2* data, **1C** beta-diversity for *MetaPhlan2* data, p 0.001, **1D** beta-diversity for *mOTUs2*
547 data p 0.001).

548

549 **Supplementary Figure 2 Intervention-associated changes in clinical scales and fecal
550 markers**

551 Co+RS: controls plus resistant starch, PD+RS: Parkinson's disease plus resistant starch, PD+DI:

552 Parkinson's disease plus dietary instructions **2A** shows the distribution of individual scores in the

553 Constipation Scoring System (CSS), Non-Motor Symptoms Questionnaire (NMSQ) and Beck
554 Depression Inventory (BDI) for the three arms prior to and post intervention. **2B** shows the
555 distribution of fecal calprotectin concentrations in μg per g feces for the three arms prior to
556 (baseline, white) and post intervention (8 weeks, green). For optimized scaling, seven outliers
557 were skipped ($n = 3$ for PD + RS baseline; $n = 2$ for PD + RS 8 weeks; $n = 1$ for PD + DI
558 baseline, $n = 1$ for PD + DI 8 weeks). **2C** shows the distribution of individual values for the
559 percentage of fecal butyrate for the three arms prior to (baseline, white) and post intervention (8
560 weeks, green).

561

562 **Supplementary Figure 3 Non-metric multidimensional scaling reveals no uniform** 563 **microbiome shifts associated with the intervention**

564 Non-metric multidimensional scaling (NMDS) visualizing the microbiome shift due to
565 intervention. As distance measure, the Bray-Curtis measure was applied. Paired data (baseline
566 and 8 weeks) are connected with a segment. PD + RS, Parkinson's disease patients receiving
567 resistant starch; Co + RS, control subjects receiving RS; PD + DI, Parkinson's disease patients
568 receiving solely dietary instruction, but no resistant starch.

569

570 **Supplementary Figure 4 *BusyBee* Web Results**

571 Annotated visualization of *BusyBee* Web given the contigs of a differentiated cluster. Each point
572 corresponds to one contig derived from the PD + RS cohort after 8 weeks. If *BusyBee* assigned $>$
573 50% of contigs within a cluster to the same genus, the genus annotation is provided.

574

575 **Supplementary Figure 5 Pathway Principal Component Analysis**

576 Principal component analysis results of the center log transformed pathway annotation provided
577 by *HUMAnN2*.

578

579 **Supplementary tables**

580

581 **Supplementary Table 1 Medication of enrolled subjects**

582

583 **Supplementary Table 2 Analysis of *ALDEx2* on different taxonomic profiles generated** 584 **with *mOTUs2***

585

586 **Supplementary Table 3 Analysis of ALDEx2 on metabolic pathways generated with**
587 **HUMAnN2**

588

589 **Supplementary file: File S1 Supplementary methods**

590 **Ethical statement**

591 The study was reviewed and approved the ethics committee of the Medical Association of
592 Saarland, Saarbruecken, Germany and registered under the reference number 189/15. The study
593 was registered at the clinical trials registry ClinicalTrials.gov (Identifier: NCT02784145).

594 Written informed consent was obtained from all subjects prior to inclusion in the study.

595 **Data availability**

596 Data are available upon request via <https://bigd.big.ac.cn/gsa-human/> (project PRJCA004296).

597 **CRedit author statement**

598 **Anouck Becker:** Conceptualization, Formal analysis, Investigation, Writing - Review &
599 Editing, Visualization; **Schmartz Pierre Georges:** Methodology, Software, Validation, Formal
600 analysis, Data Curation, Writing - Review & Editing, Visualization; **Laura Gröger:**
601 Methodology, Investigation, Writing - Review & Editing; **Nadja Grammes:** Methodology,
602 Software, Validation, Formal analysis, Data Curation, Writing - Review & Editing,
603 Visualization; **Valentina Galata:** Methodology, Software, Validation, Formal analysis, Data
604 Curation, Writing - Review & Editing, Visualization; **Hannah Philippeit:** Investigation, Formal
605 analysis, Writing - Review & Editing; **Jacqueline Weiland:** Investigation, Formal analysis,
606 Writing - Review & Editing; **Nicole Ludwig:** Methodology, Investigation, Writing - Review &
607 Editing; **Eckart Meese:** Methodology, Resources, Writing - Review & Editing, Supervision;
608 **Sascha Tierling:** Investigation, Writing - Review & Editing; **Jörn Walter:** Methodology,
609 Resources, Writing - Review & Editing, Supervision; **Andreas Schwiertz:** Investigation,
610 Resources, Writing - Review & Editing; **Jörg Spiegel:** Investigation, Writing - Review &
611 Editing; **Gudrun Wagenpfeil:** Formal analysis, Writing - Review & Editing; **Klaus**
612 **Faßbender:** Conceptualization, Resources, Writing - Review & Editing; **Andreas Keller:**
613 Conceptualization, Methodology, Software, Validation, Formal analysis, Resources, Data
614 Curation, Writing - Review & Editing, Visualization, Supervision; **Marcus M Unger:**
615 Conceptualization, Investigation, Writing - Original Draft, Supervision, Project administration,
616 Funding acquisition.

617 **Competing interests**

618 AS is a consultant for SymbioPharm GmbH, Herborn, Germany. The other authors have
619 declared that no competing interests exist.

620 **Acknowledgements**

621 This study was funded by the Michael J. Fox Foundation for Parkinson's Research (Grant ID:
622 14603) and the German Parkinson Society.

623

624 **Authors' ORCID IDs**

625 0000-0003-2465-2276 (Anouck Becker)

626 0000-0002-9627-9223 (Georges Pierre Schmartz)

627 0000-0003-1043-3910 (Laura Gröger)

628 0000-0002-4845-2757 (Nadja Grammes)

629 0000-0002-4541-427X (Valentina Galata)

630 0000-0002-7998-3630 (Hannah Philippeit)

631 0000-0001-5541-257X (Jacqueline Weiland)

632 0000-0003-4703-7567 (Nicole Ludwig)

633 0000-0001-7569-819X (Eckart Meese)

634 0000-0001-9211-5291 (Sascha Tierling)

635 0000-0003-0563-7417 (Jörn Walter)

636 0000-0002-2876-2352 (Andreas Schwiertz)

637 0000-0002-0527-0144 (Jörg Spiegel)

638 0000-0002-1133-2049 (Gudrun Wagenpfeil)

639 0000-0003-3596-868X (Klaus Faßbender)

640 0000-0002-5361-0895 (Andreas Keller)

641 0000-0003-0805-6968 (Marcus M Unger)

642

643

644

645 **References**

- 646 1. Hasegawa S, Goto S, Tsuji H, Okuno T, Asahara T, Nomoto K, et al. Intestinal dysbiosis and lowered
647 serum lipopolysaccharide-binding protein in Parkinson's Disease. *PLoS ONE*. 2015;10:e0142164.
- 648 2. Pietrucci D, Cerroni R, Unida V, Farcomeni A, Pierantozzi M, Mercuri NB, et al. Dysbiosis of gut
649 microbiota in a selected population of Parkinson's patients. *Parkinsonism Relat Disord*. 2019;65:124–
650 30.
- 651 3. Sun M-F, Shen Y-Q. Dysbiosis of gut microbiota and microbial metabolites in Parkinson's Disease.
652 *Ageing Res Rev*. 2018;45:53–61.
- 653 4. Scheperjans F, Aho V, Pereira PAB, Koskinen K, Paulin L, Pekkonen E, et al. Gut microbiota are
654 related to Parkinson's disease and clinical phenotype. *Mov Disord*. 2015;30:350–8.
- 655 5. Petrov VA, Saltykova IV, Zhukova IA, Alifirova VM, Zhukova NG, Dorofeeva YB, et al. Analysis of gut
656 microbiota in patients with Parkinson's Disease. *Bull Exp Biol Med*. 2017;162:734–7.
- 657 6. Unger MM, Spiegel J, Dillmann K-U, Grundmann D, Philippeit H, Bürmann J, et al. Short chain fatty
658 acids and gut microbiota differ between patients with Parkinson's disease and age-matched controls.
659 *Parkinsonism Relat Disord*. 2016;32:66–72.
- 660 7. Hill-Burns EM, Debelius JW, Morton JT, Wissemann WT, Lewis MR, Wallen ZD, et al. Parkinson's
661 disease and Parkinson's disease medications have distinct signatures of the gut microbiome. *Mov*
662 *Disord*. 2017;32:739–49.
- 663 8. Li W, Wu X, Hu X, Wang T, Liang S, Duan Y, et al. Structural changes of gut microbiota in
664 Parkinson's disease and its correlation with clinical features. *Sci China Life Sci*. 2017;60:1223–33.
- 665 9. Fu X, Liu Z, Zhu C, Mou H, Kong Q. Nondigestible carbohydrates, butyrate, and butyrate-producing
666 bacteria. *Crit Rev Food Sci Nutr*. 2019;59:S130-S152.
- 667 10. Louis P, Flint HJ. Formation of propionate and butyrate by the human colonic microbiota. *Environ*
668 *Microbiol*. 2017;19:29–41.
- 669 11. Furusawa Y, Obata Y, Fukuda S, Endo TA, Nakato G, Takahashi D, et al. Commensal microbe-
670 derived butyrate induces the differentiation of colonic regulatory T cells. *Nature*. 2013;504:446–50.
- 671 12. Arumugam M, Raes J, Pelletier E, Le Paslier D, Yamada T, Mende DR, et al. Enterotypes of the
672 human gut microbiome. *Nature*. 2011;473:174–80.
- 673 13. Brumfield KD, Huq A, Colwell RR, Olds JL, Leddy MB. Microbial resolution of whole genome shotgun
674 and 16S amplicon metagenomic sequencing using publicly available NEON data. *PLoS ONE*.
675 2020;15:e0228899.
- 676 14. Ranjan R, Rani A, Metwally A, McGee HS, Perkins DL. Analysis of the microbiome: Advantages of
677 whole genome shotgun versus 16S amplicon sequencing. *Biochem Biophys Res Commun*.
678 2016;469:967–77.
- 679 15. Laczny CC, Kiefer C, Galata V, Fehlmann T, Backes C, Keller A. BusyBee Web: metagenomic data
680 analysis by bootstrapped supervised binning and annotation. *Nucleic Acids Res*. 2017;45:W171-
681 W179.
- 682 16. Guardiola J, Lobatón T, Rodríguez-Alonso L, Ruiz-Cerulla A, Arajol C, Loayza C, et al. Fecal level of
683 calprotectin identifies histologic inflammation in patients with ulcerative colitis in clinical and
684 endoscopic remission. *Clin Gastroenterol Hepatol*. 2014;12:1865–70.
- 685 17. Mulak A, Koszewicz M, Panek-Jeziorna M, Koziowska-Gawron E, Budrewicz S. Fecal calprotectin
686 as a marker of the gut immune system activation is elevated in Parkinson's Disease. *Front Neurosci*.
687 2019;13:992.

- 688 18. Schwartz A, Spiegel J, Dillmann U, Grundmann D, Bürmann J, Faßbender K, et al. Fecal markers of
689 intestinal inflammation and intestinal permeability are elevated in Parkinson's disease. *Parkinsonism*
690 *Relat Disord.* 2018;104–7.
- 691 19. Alfa MJ, Strang D, Tappia PS, Graham M, van Domselaar G, Forbes JD, et al. A randomized trial to
692 determine the impact of a digestion resistant starch composition on the gut microbiome in older and
693 mid-age adults. *Clin Nutr.* 2018;37:797–807.
- 694 20. Ondov BD, Treangen TJ, Melsted P, Mallonee AB, Bergman NH, Koren S, Phillippy AM. Mash: fast
695 genome and metagenome distance estimation using MinHash. *Genome Biol.* 2016;17:132.
- 696 21. Gazerani P. Probiotics for Parkinson's Disease. *Int J Mol Sci.* 2019;23;20(17):41212
- 697 22. Akbari E, Asemi Z, Daneshvar Kakhaki R, Bahmani F, Kouchaki E, Tamtaji OR, et al. Effect of
698 Probiotic Supplementation on Cognitive Function and Metabolic Status in Alzheimer's Disease: A
699 Randomized, Double-Blind and Controlled Trial. *Front Aging Neurosci.* 2016;8:256.
- 700 23. Heintz-Buschart A, Pandey U, Wicke T, Sixel-Döring F, Janzen A, Sittig-Wiegand E, et al. The nasal
701 and gut microbiome in Parkinson's disease and idiopathic rapid eye movement sleep behavior
702 disorder. *Mov Disord.* 2018;33:88–98.
- 703 24. Hopfner F, Künstner A, Müller SH, Künzel S, Zeuner KE, Margraf NG, et al. Gut microbiota in
704 Parkinson disease in a northern German cohort. *Brain Res.* 2017;1667:41–5.
- 705 25. Nishiwaki H, Ito M, Ishida T, Hamaguchi T, Maeda T, Kashihara K, et al. Meta-analysis of gut
706 dysbiosis in Parkinson's Disease. *Mov Disord* 2020.
- 707 26. Salter SJ, Cox MJ, Turek EM, Calus ST, Cookson WO, Moffatt MF, et al. Reagent and laboratory
708 contamination can critically impact sequence-based microbiome analyses. *BMC Biol.* 2014;12:87.
- 709 27. Pinto-Sanchez MI, Hall GB, Ghajar K, Nardelli A, Bolino C, Lau JT, et al. Probiotic bifidobacterium
710 longum NCC3001 reduces depression scores and alters brain activity: a pilot study in patients with
711 irritable bowel syndrome. *Gastroenterology.* 2017;153:448-459.e8.
- 712 28. Anderson G, Seo M, Berk M, Carvalho AF, Maes M. Gut permeability and microbiota in Parkinson's
713 Disease: role of depression, tryptophan catabolites, oxidative and nitrosative stress and melatonergic
714 pathways. *Curr Pharm Des.* 2016;22:6142–51.
- 715 29. van de Wouw M, Boehme M, Lyte JM, Wiley N, Strain C, O'Sullivan O, et al. Short-chain fatty acids:
716 microbial metabolites that alleviate stress-induced brain-gut axis alterations. *J Physiol (Lond)*.
717 2018;596:4923–44.
- 718 30. Skonieczna-Żydecka K, Grochans E, Maciejewska D, Szkup M, Schneider-Matyka D, Jurczak A, et
719 al. Faecal short chain fatty acids profile is changed in Polish depressive women. *Nutrients* 2018.
- 720 31. Caspani G, Kennedy S, Foster JA, Swann J. Gut microbial metabolites in depression: understanding
721 the biochemical mechanisms. *Microb Cell.* 2019;6:454–81.
- 722 32. Berni Canani R, Sangwan N, Stefka AT, Nocerino R, Paparo L, Aitoro R, et al. *Lactobacillus*
723 *rhamnosus* GG-supplemented formula expands butyrate-producing bacterial strains in food allergic
724 infants. *ISME J.* 2016;10:742–50.
- 725 33. Fahn S, Elton R, Members of the UPDRS Development Committee. The Unified Parkinson's Disease
726 Rating Scale. *Recent developments in Parkinson's Disease.* 1987;2:153–63.
- 727 34. Folstein MF, Folstein SE, McHugh PR. "Mini-mental state". *J Psychiatr Res.* 1975;12:189–98.
- 728 35. Agachan F, Chen T, Pfeifer J, Reissman P, Wexner SD. A constipation scoring system to simplify
729 evaluation and management of constipated patients. *Dis. Colon Rectum.* 1996;39:681–5.
- 730 36. Beck AT, Ward CH, Mendelsohn M, Mock J, Erbaugh J. An inventory for measuring depression. *Arch*
731 *gen psychiatry.* 1961;4:561–71.
- 732 37. Chaudhuri KR, Martinez-Martin P, Schapira AHV, Stocchi F, Sethi K, Odin P, et al. International
733 multicenter pilot study of the first comprehensive self-completed nonmotor symptoms questionnaire
734 for Parkinson's disease: the NMSQuest study. *Mov Disord.* 2006;21:916–23.
- 735 38. Guy W. ECDEU assessment manual for psychopharmacology. US Department of Health, Education
736 and Welfare, Rockville MD. 1976:217–20.
- 737 39. Ewels P, Magnusson M, Lundin S, Källér M. MultiQC: summarize analysis results for multiple tools
738 and samples in a single report. *Bioinformatics.* 2016;32:3047–8.
- 739 40. Davis MPA, van Dongen S, Abreu-Goodger C, Bartonicek N, Enright AJ. Kraken: a set of tools for
740 quality control and analysis of high-throughput sequence data. *Methods.* 2013;63:41–9.

- 741 41. KneadData – The Huttenhower Lab. 30.08.2020. <https://huttenhower.sph.harvard.edu/kneaddata/>.
742 Accessed 30 Aug 2020.
- 743 42. Milanese A, Mende DR, Paoli L, Salazar G, Ruscheweyh H-J, Cuenca M, et al. Microbial abundance,
744 activity and population genomic profiling with mOTUs2. *Nat Commun.* 2019;10:1014.
- 745 43. Segata N, Waldron L, Ballarini A, Narasimhan V, Jousson O, Huttenhower C. Metagenomic microbial
746 community profiling using unique clade-specific marker genes. *Nat Methods.* 2012;9:811–8.
- 747 44. Franzosa EA, McIver LJ, Rahnard G, Thompson LR, Schirmer M, Weingart G, et al. Species-level
748 functional profiling of metagenomes and metatranscriptomes. *Nat Methods.* 2018;15:962–8.
- 749 45. McMurdie PJ, Holmes S. phyloseq: an R package for reproducible interactive analysis and graphics
750 of microbiome census data. *PLoS ONE.* 2013;8:e61217.
- 751 46. Fernandes AD, Macklaim JM, Linn TG, Reid G, Gloor GB. ANOVA-like differential expression
752 (ALDEx) analysis for mixed population RNA-Seq. *PLoS ONE.* 2013;8:e67019.
- 753 47. Foster ZSL, Sharpton TJ, Grünwald NJ. Metacoder: An R package for visualization and manipulation
754 of community taxonomic diversity data. *PLoS Comput Biol.* 2017;13:e1005404.
- 755 48. Rivera-Pinto J, Egozcue JJ, Pawlowsky-Glahn V, Paredes R, Noguera-Julian M, Calle ML. Balances:
756 a new perspective for microbiome analysis. *mSystems* 2018.
- 757 49. Bankevich A, Nurk S, Antipov D, Gurevich AA, Dvorkin M, Kulikov AS, et al. SPAdes: a new genome
758 assembly algorithm and its applications to single-cell sequencing. *J Comput Biol.* 2012;19:455–77.
- 759 50. McInnes L, Healy J, Melville J. UMAP: Uniform manifold approximation and projection for dimension
760 reduction; 09.02.2018.
- 761 51. Meijerfeldt FAB von, Arkhipova K, Cambuy DD, Coutinho FH, Dutilh BE. Robust taxonomic
762 classification of uncharted microbial sequences and bins with CAT and BAT. *Genome Biol.*
763 2019;20:217.

RESISTA-PD trial (NCT 02784145)

Enrollment

Parkinson's disease



Control subjects



Parkinson's disease



baseline-visit & fecal sampling



Interventional period

5 g resistant starch
twice a day



5 g resistant starch
twice a day



Dietary
instructions



4-week follow-up visit & fecal sampling



5 g resistant starch
twice a day



5 g resistant starch
twice a day



Dietary
instructions



8-week follow-up visit & fecal sampling

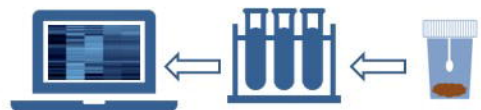


Analysis

Genome-wide shotgun metagenomics sequencing

Quantitative analysis of fecal calprotectin & fecal SCFA

Computational analysis



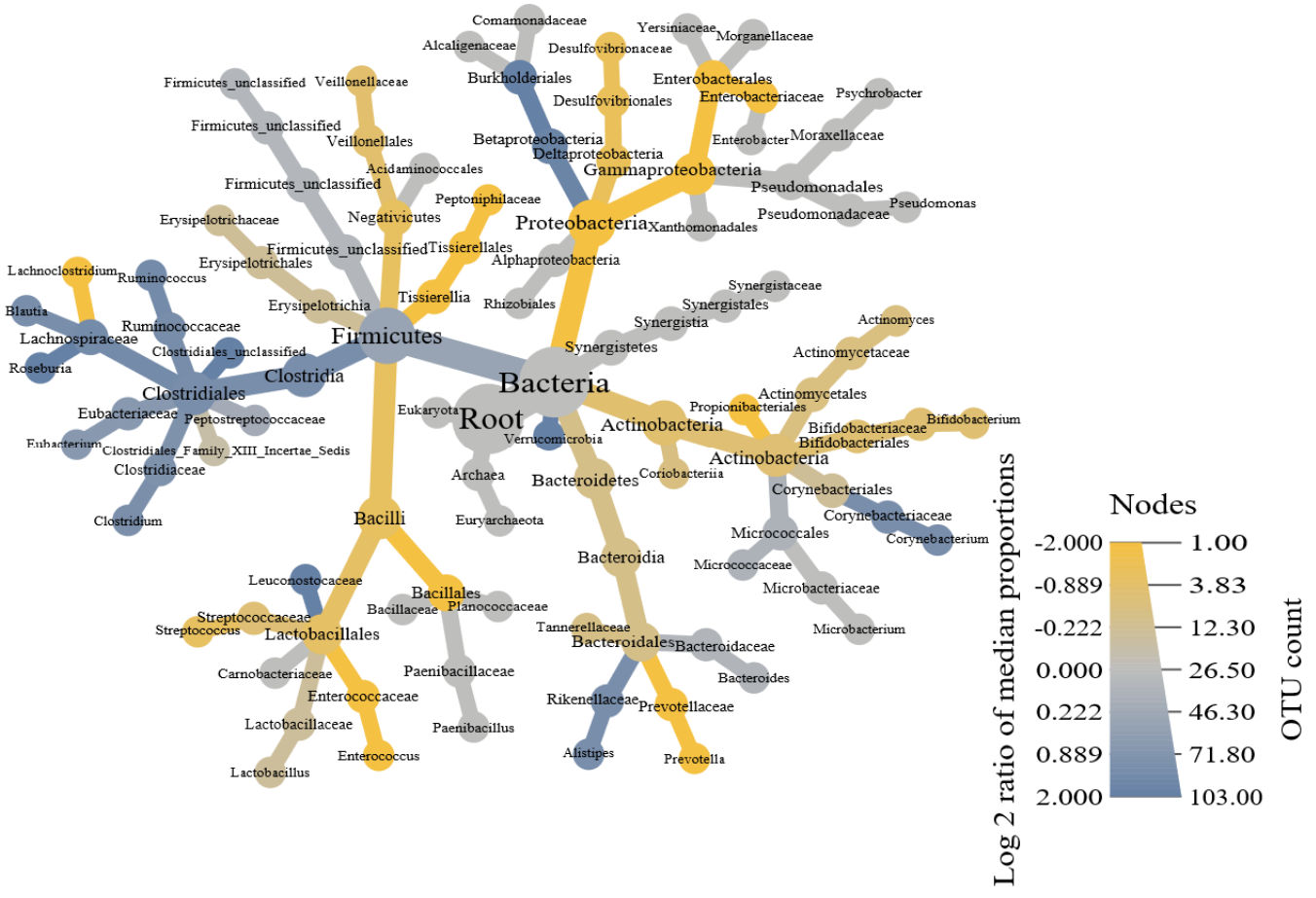


Figure 3 A

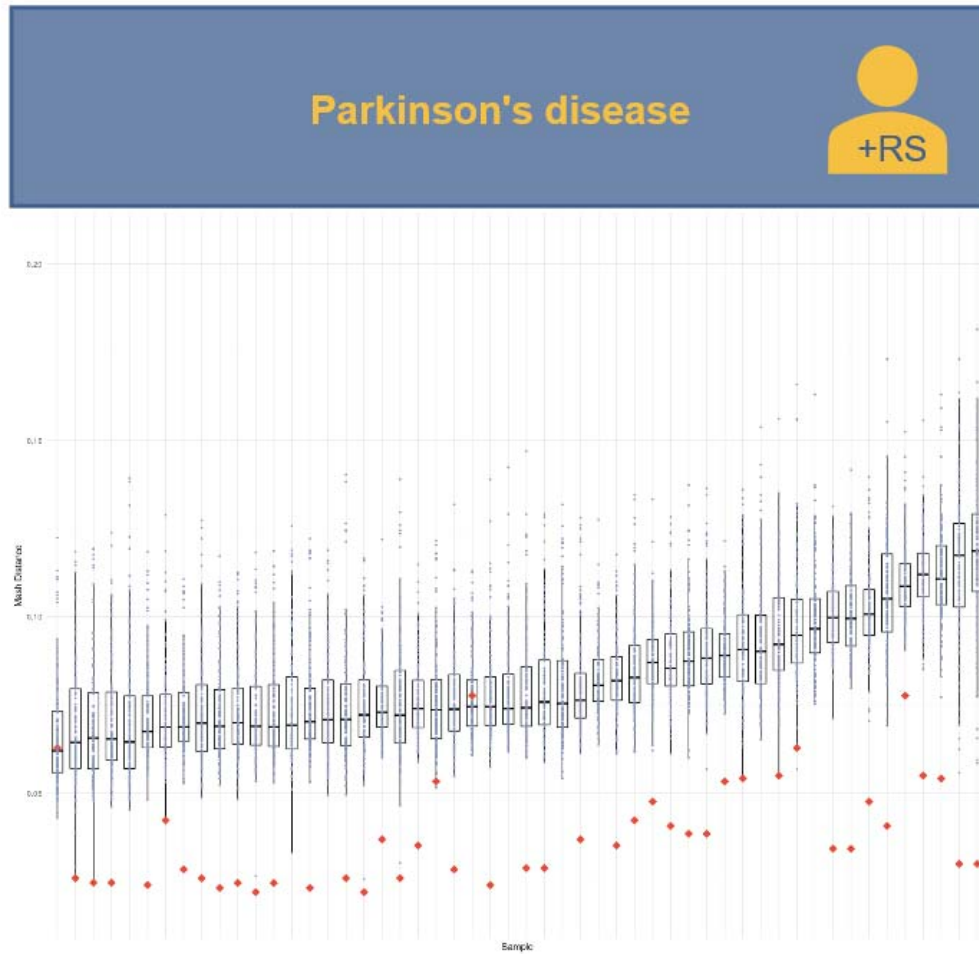


Figure 3 B

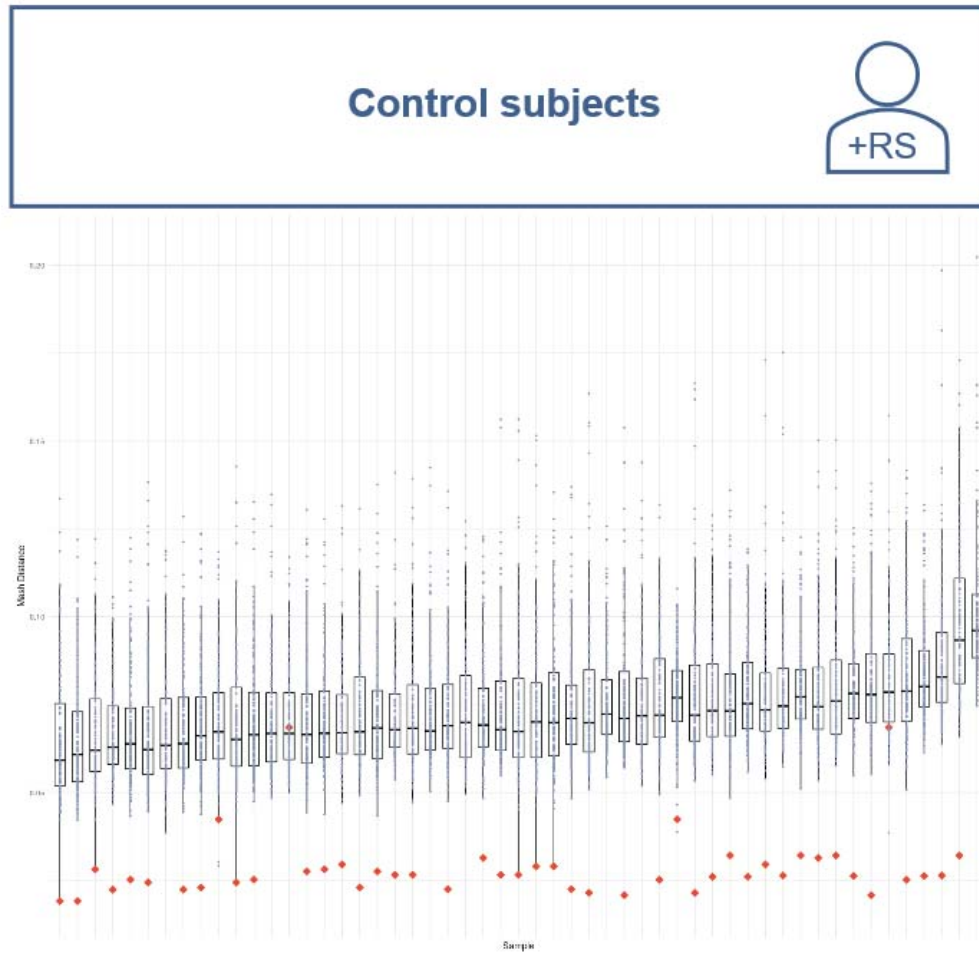


Figure 3 C

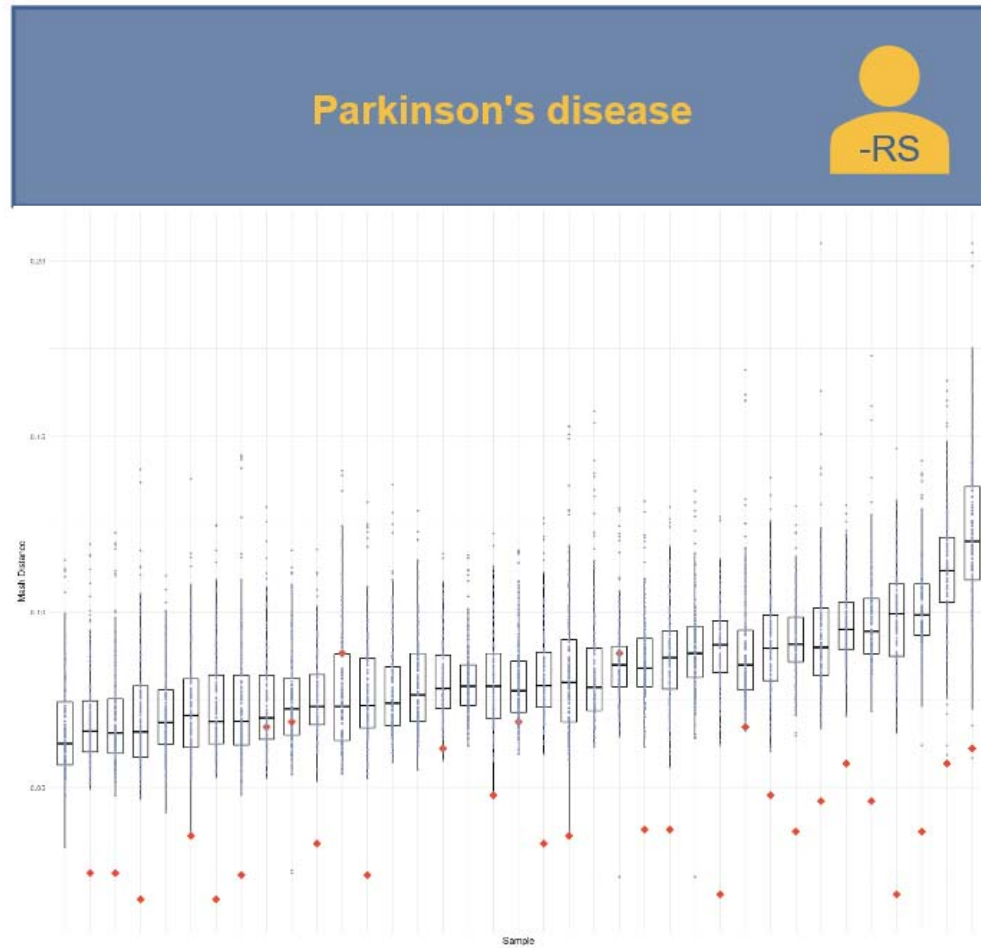


Figure 4

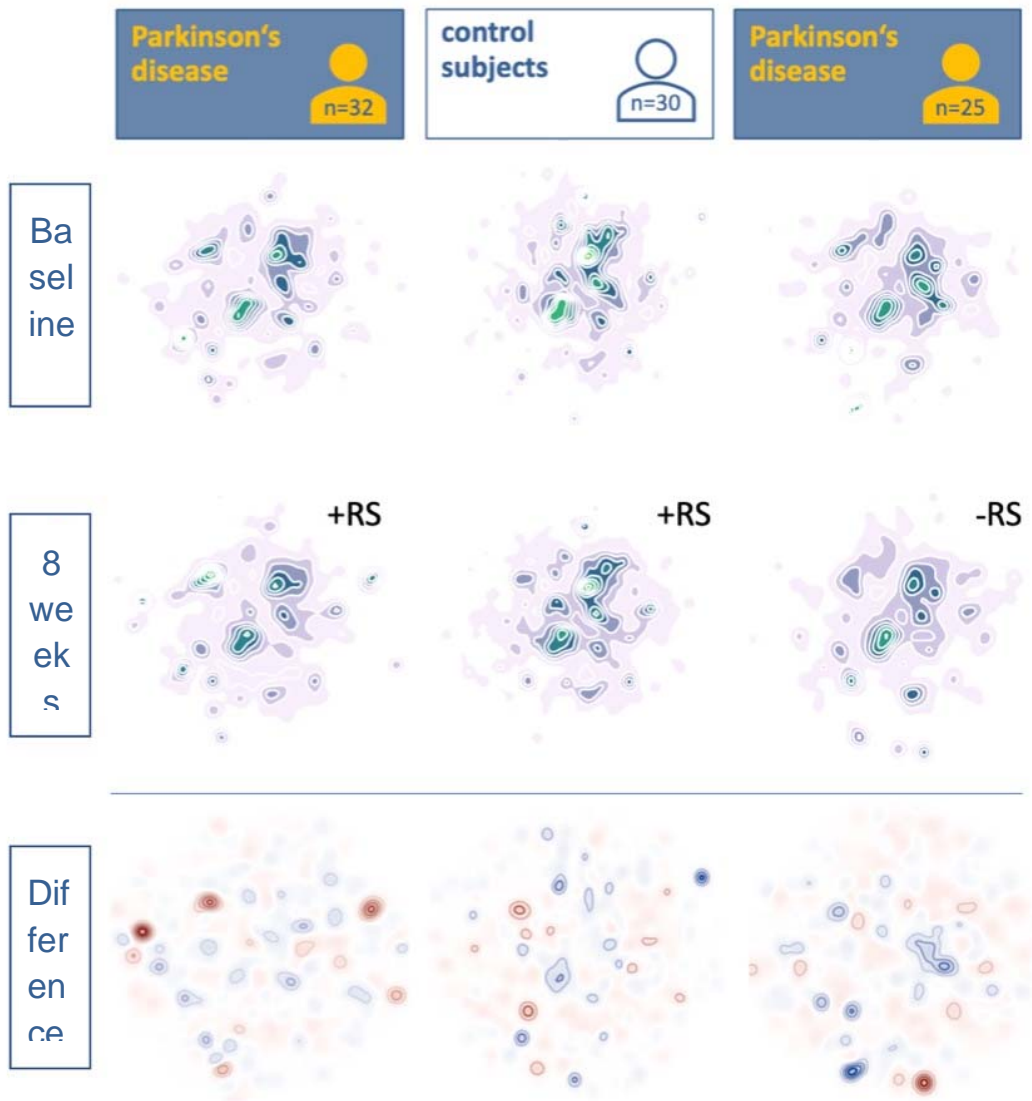


Figure 5A

DENOMINATOR

NUMERATOR

Ruthenibacterium_lactatiformans

Fusicatenibacter_saccharivorans

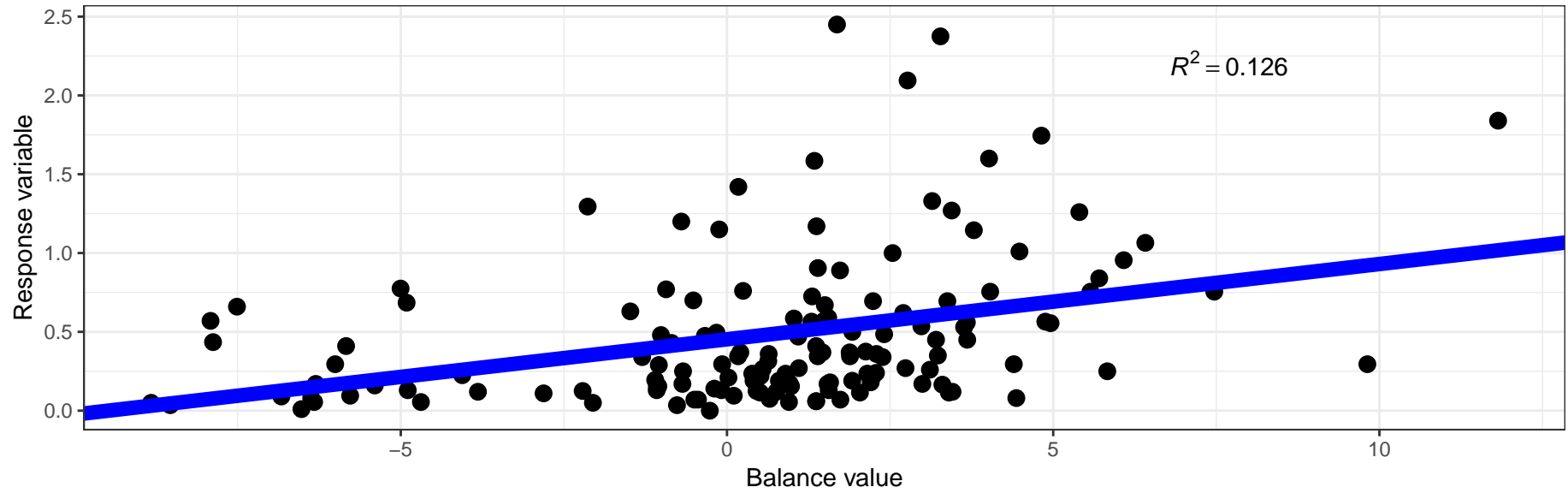


Figure 5B

DENOMINATOR

Ruthenibacterium_lactatiformans

NUMERATOR

Dorea_longicatena

Blautia_wexlerae

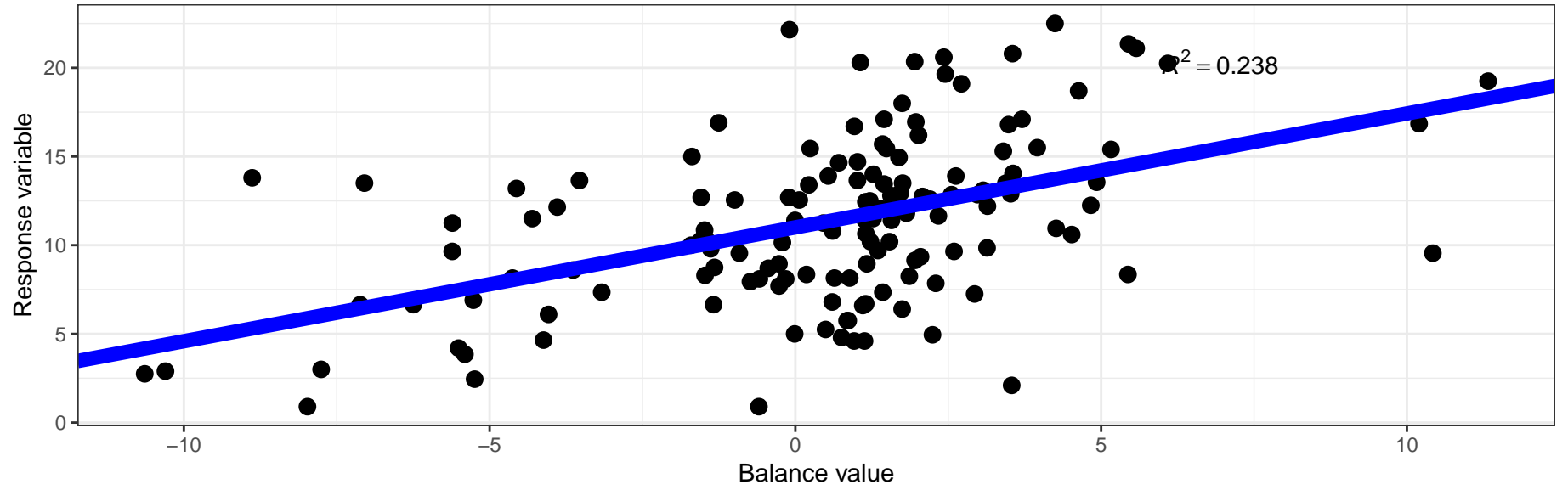


Figure 5C

DENOMINATOR

ref_mOTU_v25_04716

NUMERATOR

meta_mOTU_v25_12240

ref_mOTU_v25_00312

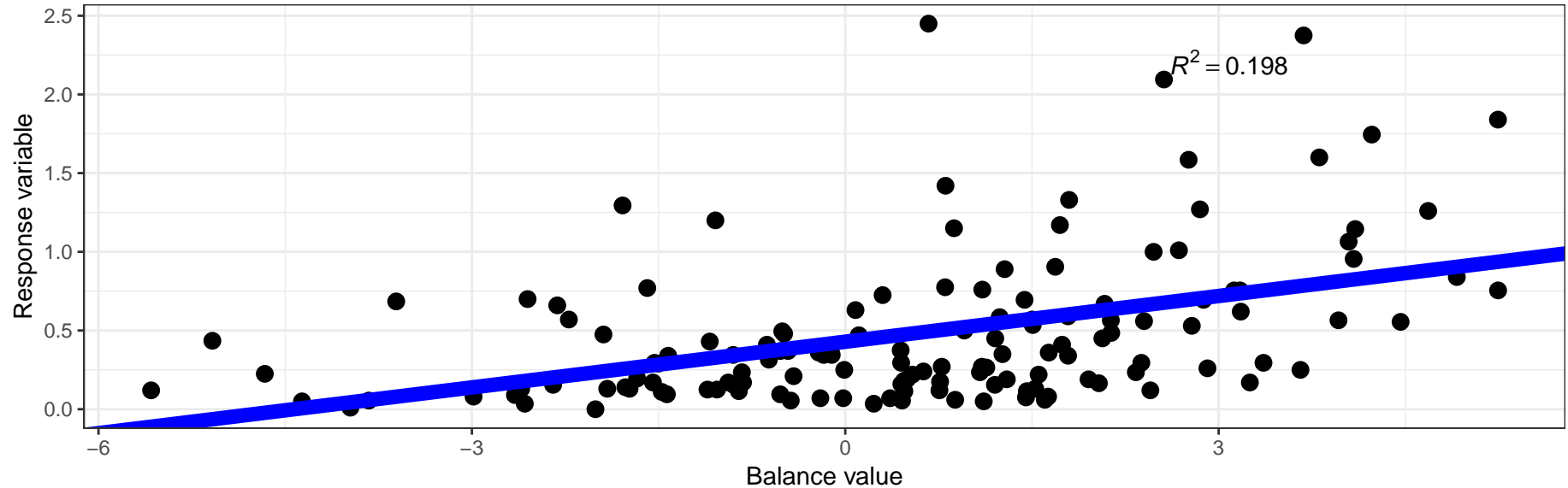


Figure 5D

DENOMINATOR

ref_mOTU_v25_04716

NUMERATOR

ref_mOTU_v25_02154

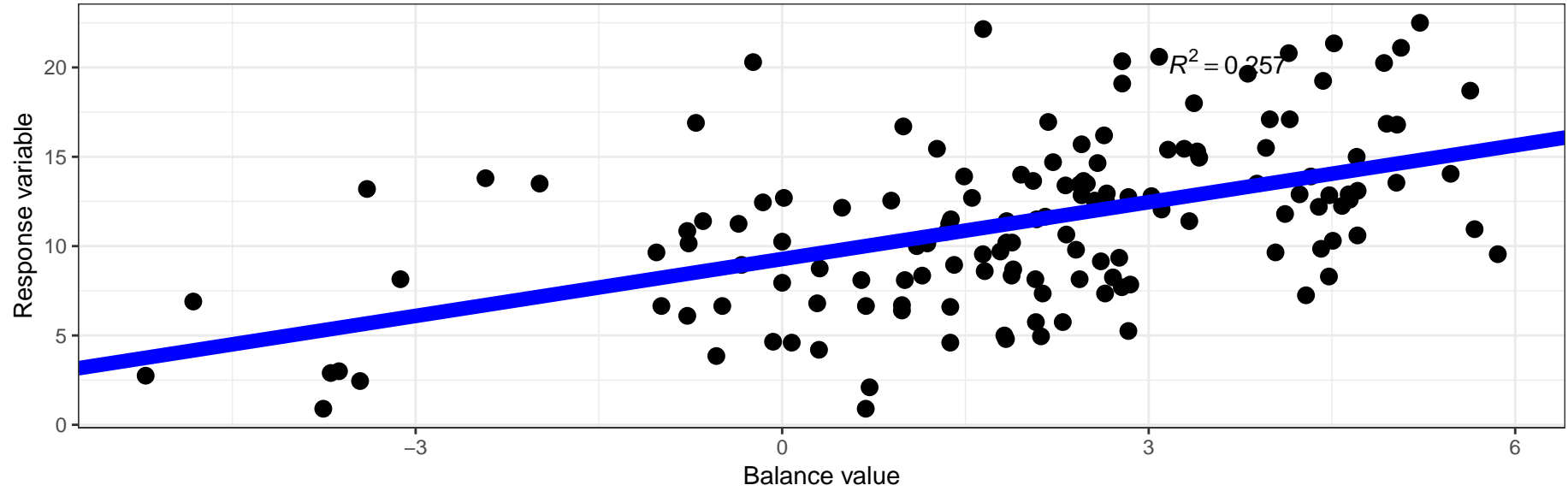


Table 1 Epidemiological and clinical characteristics of the enrolled subjects

	Parkinson patients + resistant starch	Control subjects + resistant starch	Parkinson patients + dietary instructions
Number of subjects enrolled	n = 32	n = 30	n = 25
Reasons to withdraw from study by subject's request after having started intervention	<ul style="list-style-type: none"> - Subject disliked taste of RS (n = 1) - General discomfort and upset stomach after starting RS (n = 3) - Concurrent acute disease after baseline visit (n = 1) 	<ul style="list-style-type: none"> - Acute disease of family member (n = 1) 	<ul style="list-style-type: none"> - Difficulties in handling fecal sampling kits at home (n = 1) - Claiming "personal problems and family issues" (n = 1)
Number of subjects with 4-week follow-up	n = 28	n = 29	n = 23
Number of subjects with 8-week follow-up	n = 26	n = 27	n = 23
Age (median, [range])	64.5 [42 - 84]	61.5 [40 - 76]	66 [47 - 80]
Sex (male / female)	18 / 14	12 / 18	13 / 12
Dietary habits	Omnivorous diet: n = 29 Vegetarian diet: n = 2 Pescetarian diet: n = 1	Omnivorous diet: n = 27 Vegetarian diet: n = 2 Pesceatrian diet: n = 1	Omnivorous diet: n = 25 Vegetarian diet: n = 0 Pescetarian diet: n = 0
Smoker	2 of 32	3 of 30	1 of 25
Disease duration in months (median, [range])	111 [7 - 288]	not applicable	111 [22 - 265]
History of appendectomy	15 of 32	7 of 30	13 of 25
UPDRS I, II, III total score in on state (median, [range])	35 [4 - 74]	not applicable	30 [3 - 69]
MMSE (median, [range])	29 [23 - 30]	30 [28-30]	29 [25 - 30]

Note: UPDRS, Unified Parkinson Disease Rating Scale; MMSE, Mini Mental State Examination.

Table 2 Scores on clinical scales at baseline and post intervention

	Parkinson patients + resistant starch		Control subjects + resistant starch		Parkinson patients + dietary instructions	
	Baseline	Post intervention	Baseline	Post intervention	Baseline	Post intervention
CSS score median [range]	5 [0 - 14]	3.5 [0 - 15]	1 [0 - 11]	0 [0 - 8]	2 [0 - 10]	2 [0 - 12]
	p 0.257		p 0.125		p 0.674	
NMSQ score median [range]	10.5 [3 - 20]	7.5 [2 - 18]	3 [0 - 9]	3 [0 - 10]	10 [4 - 19]	10 [5 - 19]
	p 0.001		p 0.774		p 0.152	
BDI score median [range]	6.5 [2 - 25]	3 [0 - 12]	2 [0 - 14]	2 [0 - 20]	7 [1 - 18]	6 [0 - 13]
	p 0.001		p 0.202		p 0.106	

Note: CSS, Constipation Scoring System; NMSQ, Non-Motor Symptoms Questionnaire; BDI, Beck Depression Inventory.

Table 3 Fecal calprotectin concentrations at baseline and post intervention (8 weeks)

	Parkinson patients + resistant starch		Control subjects + resistant starch		Parkinson patients + dietary instructions	
	Baseline	Post intervention	Baseline	Post intervention	Baseline	Post intervention
Calprotectin ¹ median [range]	56.8 [19 - 327]	20.5 [19 - 407]	19 [19 - 69]	19 [19 - 155]	46 [19 - 219]	31 [19 - 217]
	p 0.023		p 1.000		p 0.481	

¹Calprotectin values are µg per g feces.

Table 4 Short chain fatty acid concentrations at baseline and post intervention (8 weeks)

	Parkinson patients + resistant starch		Control subjects + resistant starch		Parkinson patients + dietary instructions	
	Baseline	Post intervention	Baseline	Post intervention	Baseline	Post intervention
Butyrate (mmol/g) median [range]	0.24 [0.00 - 1.00]	0.25 [0.01 - 1.92]	0.46 [0.04 - 2.10]	0.32 [0.07 - 2.45]	0.29 [0.05 - 1.44]	0.27 [0.06 - 2.38]
	p 0.029		p 0.223		p 0.426	
Butyrate (%) median [range]	10.5 [0.9 - 22.2]	11.3 [0.9 - 21.4]	12.8 [4.5 - 21.1]	11.2 [4.8 - 22.5]	11.3 [3.9 - 18.8]	10.3 [2.1 - 20.6]
	p 0.026		p 0.260		p 0.685	
Acetate (mmol/g) median [range]	1.39 [0.15 - 4.91]	1.80 [0.23 - 6.55]	1.99 [0.57 - 6.78]	2.04 [0.38 - 9.54]	2.17 [0.24 - 36.0]	2.04 [0.65 - 7.66]
	p 0.165		p 0.891		p 0.685	
Propionate (mmol/g) median [range]	0.36 [0.03 - 1.74]	0.55 [0.06 - 2.22]	0.48 [0.08 - 1.50]	0.49 [0.12 - 2.16]	0.53 [0.11 - 1.66]	0.48 [0.18 - 1.94]
	p 0.145		p 0.785		0.445	
Valerate (mmol/g) median [range]	0.07 [0.01 - 0.29]	0.07 [0.02 - 0.18]	0.06 [0.02 - 0.26]	0.07 [0.02 - 0.20]	0.11 [0.01 - 0.35]	0.07 [0.01 - 0.66]
	p 0.647		p 0.703		p 0.733	
Isobutyrate (mmol/g) median [range]	0.05 [0.01 - 0.26]	0.05 [0.01 - 0.15]	0.05 [0.02 - 0.19]	0.05 [0.02 - 0.16]	0.07 [0.01 - 0.24]	0.05 [0.01 - 0.45]
	p 0.829		p 0.715		p 0.501	
Isovalerate (mmol/g) median [range]	0.04 [0.00 - 0.18]	0.04 [0.00 - 0.19]	0.06 [0.00 - 0.20]	0.04 [0.00 - 0.22]	0.06 [0.00 - 0.26]	0.04 [0.01 - 0.39]
	p 0.461		p 0.584		p 0.537	
Total SCFA (mmol/g) median [range]	2.08 [0.21 - 8.02]	2.72 [0.42 - 10.6]	3.17 [0.76 - 10.5]	2.96 [0.64 - 14.6]	3.37 [0.47 - 36.3]	3.07 [0.97 - 13.2]
	p 0.142		p 0.973		p 0.745	

Note: p values refer to the change between baseline concentrations and post-interventional concentrations. SCFA, short-chain fatty acids.