

Dental biofilm microbiota dysbiosis is associated with the risk of aGVHD after allogeneic HSCT

Vitor Heidrich^{1,2#}, Julia S. Bruno^{1#}, Franciele H. Knebel^{1#}, Vinícius C. de Molla^{3,4#}, Wanessa Miranda-Silva¹, Paula F. Asprino¹, Luciana Tucunduva³, Vanderson Rocha^{3,5,6}, Yana Novis³, Celso Arrais-Rodrigues^{3,4}, Eduardo R. Fregnani³, Anamaria A. Camargo^{3*}

¹Centro de Oncologia Molecular, Hospital Sírio-Libanês, São Paulo, SP, Brazil

²Departamento de Bioquímica, Instituto de Química, Universidade de São Paulo, São Paulo, SP, Brazil

³Centro de Oncologia, Hospital Sírio-Libanês, São Paulo, SP, Brazil

⁴Universidade Federal de São Paulo, São Paulo, SP, Brazil

⁵Hospital das Clínicas da Faculdade de Medicina, Universidade de São Paulo/ICESP, São Paulo, SP, Brazil

⁶Churchill Hospital, NHS-BT, Oxford, United Kingdom

These authors contributed equally to this work

*Corresponding author:

Anamaria Aranha Camargo
E-mail: anamaria.acamargo@hsl.org.br
Centro de Oncologia Molecular
Hospital Sírio-Libanês
Rua Prof. Daher Cutait, 69
01308-060 São Paulo - SP - Brasil
Phone: +55 11 3394-4180

Running title: Dental biofilm microbiota and aGVHD risk

ABSTRACT

Acute graft-versus-host disease (aGVHD) is one of the major causes of death after allogeneic hematopoietic stem-cell transplantation (allo-HSCT). Recently, aGVHD onset was linked to intestinal microbiota (IM). However, other bacterial-rich gastrointestinal sites, such as the mouth, which hosts several distinctive microbiotas, may also impact the risk of GVHD. The dental biofilm microbiota (DBM) is highly diverse and, like the IM, interacts with host cells and modulates immune homeostasis. We characterized changes in the DBM of patients during allo-HSCT and evaluated whether the DBM could be associated with the risk of aGVHD. DBM dysbiosis during allo-HSCT was marked by a gradual loss of bacterial diversity. We observed significant changes in DBM genera composition, with a decrease in the abundance of commensal genera, and overgrowths of potentially pathogenic bacteria. High *Streptococcus* and high *Corynebacterium* relative abundance at preconditioning were associated with higher risk of aGVHD (67% vs. 33%; HR = 2.89, $P = 0.04$ and 73% vs. 37%; HR = 2.74, $P = 0.04$, respectively), while high *Veillonella* relative abundance was associated with a lower risk of aGVHD (27% vs. 73%; HR = 0.24, $P < 0.01$). *Enterococcus faecalis* bloom was observed in 20% of allo-HSCT recipients' DBM and was significantly associated with a higher risk of aGVHD (100% vs. 40%; HR = 4.07, $P < 0.001$) and severe aGVHD (60% vs. 12%; HR = 6.82, $P = 0.01$). To the best of our knowledge, this is the first study demonstrating that DBM dysbiosis is associated with the aGVHD risk after allo-HSCT.

KEY POINTS

- DBM dysbiosis during allo-HSCT was marked by a decrease in the abundance of commensal genera and overgrowths of pathogenic bacteria.
- *Streptococcus* and *Veillonella* at preconditioning and *Enterococcus faecalis* bloom during allo-HSCT were associated with the risk of aGVHD.

INTRODUCTION

Allogeneic hematopoietic stem-cell transplantation (allo-HSCT) is the only curative treatment for several hematologic diseases¹. However, allo-HSCT recipients may experience potentially fatal complications, such as infections and graft-versus-host disease (GVHD)^{2,3}.

Acute GVHD (aGVHD) is a clinical syndrome characterized by maculopapular rash, hyperbilirubinemia, anorexia, diarrhea and abdominal pain⁴. The incidence of aGVHD grade II-IV is 30-40% at day 100⁵. During transplantation, chemotherapy, radiotherapy, and infection can damage host cells, releasing sterile damage-associated molecular patterns (DAMPs), and pathogen-associated molecular patterns (PAMPs) into the extracellular milieu. DAMPs and PAMPs activate donor T cells leading to a proinflammatory state. Simultaneously, donor regulatory T cells, myeloid-derived suppressor cells and tolerogenic dendritic cells are activated, counterbalancing the inflammation as an anti-inflammatory response. An imbalance in these events toward the proinflammatory state may result in aGVHD⁶.

In addition to graft source and the intensity of the conditioning regimen⁶, the intestinal microbiota (IM) composition was shown to be associated with the risk and

intensity of aGVHD. Loss of IM diversity is observed during the pre- and post-transplantation period⁷, and low microbiota diversity at the time of stem cell engraftment has been associated with a higher risk of severe aGVHD⁷ and transplant-related death⁸.

Two non-exclusive ecological events can explain the link between loss of bacterial diversity and aGVHD risk: (1) absence or loss of protective commensal bacterial species and (2) sudden expansion (also known as bloom) of opportunistic pathogenic bacteria. Both events have been independently linked to aGVHD development. For instance, a higher abundance of commensal bacteria from the *Blautia* genus in the IM after allo-HSCT has been associated with reduced GVHD-related mortality and improved overall survival^{9,10}. On the other hand, a shift in IM leading to the dominance of bacteria from the *Enterococcus* genus occurs more prominently in allo-HSCT recipients developing aGVHD¹¹, and it is associated with increased GVHD-related mortality¹².

Recent studies have shown that bacteria inhabiting the oral cavity can translocate to the gut¹³ and drive IM dysbiosis^{14,15}. However, direct evaluation of the effect of allo-HSCT on the oral microbiota (OM) and the influence of OM dysbiosis on aGVHD risk have not been performed. To further understand the impact of gastrointestinal bacterial communities on aGVHD development following allo-HSCT, it would be crucial to extend the scope of these analyses to the OM.

The OM comprises over 700 bacterial species that stick to surfaces of the mouth, forming biofilms¹⁶. The dental biofilm microbiota (DBM), in particular, is among the richest and most diverse and, like the IM, interacts with host cells and modulates

immune homeostasis¹⁷. In the present study, we characterized changes of the DBM in patients during allo-HSCT and evaluated whether alterations in DBM diversity and composition could be associated with the risk of aGVHD.

METHODS

Sample collection and oral care protocol

Supragingival biofilm samples were collected from patients who underwent allo-HSCT. Samples were collected with sterile swabs at three phases during allo-HSCT: before the conditioning regimen (preconditioning), at aplasia, and at engraftment. All patients were requested not to perform oral hygiene for at least 6h before sample collection. All patients were examined by an oral medicine specialist for potential infections and followed the same protocol for oral mucositis prophylaxis with photobiomodulation and oral hygiene with fluoride toothpaste and 0.12% chlorhexidine mouthwash. Informed consent was obtained from all participants prior to sample collection, and the study was approved by the Institutional Ethics Committee (Protocol #1.414.217).

DNA extraction and sequencing

Bacterial cells were recovered from swabs by vortexing in TE buffer supplemented with PureLink RNase A (Thermo Fisher Scientific, Waltham, MA, USA). DNA was extracted using the QIAamp DNA Blood Mini Kit (Qiagen, Hilden, Germany) according to the manufacturer's protocol. Next, 12.5 ng of total DNA and pre-validated primers¹⁸ were used to amplify 16S rRNA hypervariable regions V3–V4. Amplicons were sequenced as described elsewhere¹⁹ on the MiSeq platform (Illumina, San Diego, CA, USA).

Bioinformatics analyses

Reads were demultiplexed, and primer sequences were removed using the MiSeq Reporter software. Read processing was carried out within the QIIME 2 (*Quantitative Insights Into Microbial Ecology 2*) framework²⁰. Briefly, using experiment-specific adaptive error models²¹, forward and reverse sequences were filtered for quality and bimeras, denoised, and merged into consensus sequences with the DADA2 pipeline²², generating unique amplicon sequencing variants (ASVs). ASVs were further filtered for chimeric sequences using the SILVA database²³ and UCHIME²⁴, resulting in a total of 6 434 516 high-quality 16S rRNA sequences, with the median number of sequences obtained per sample being 58 867 (range: 2 153 - 240 734). Afterwards, ASVs were taxonomically assigned using the SILVA database and VSEARCH tool²⁵.

Microbiota and statistical analyses

As determined by per sample alpha diversity rarefaction curves, <12 500 read samples were considered defective and excluded. To adjust for differences in library sizes, the remaining samples were rarefied to 14 157 reads before calculating alpha diversity indexes (Shannon and Gini-Simpson indexes and the number of observed ASVs as a proxy for species richness) with the QIIME 2 *q2-diversity* plugin. Alpha diversity across transplantation phases was compared with the Mann-Whitney U test. The relative abundance of each genus was calculated with the QIIME 2 *q2-taxa* plugin. Differentially abundant genera across transplantation phases were identified using the ANCOM test²⁶. ANCOM W represents the proportion of null hypotheses rejected when subtesting

the differential abundance of a genus normalized by the abundance of each one of the genera in the dataset. $W > 0.7$ was considered as statistically significant. Cumulative incidence (CMI) rates for aGVHD (grade II to IV) and severe aGVHD (grade III and IV) were calculated with death as a competing event. Relative risks for developing aGVHD and severe aGVHD were estimated using the Fine-Gray risk regression model and adjusted for graft source and intensity of the conditioning regimen. Relative risks are presented as hazard ratios with 95% CIs and two-tailed P-values. R software (version 3.6.2) and the statistical package *cmprsk* (version 2.2.9) were used for statistical analyses.

RESULTS

Patient characteristics

A total of 30 patients who underwent allo-HSCT for hematologic disorders at Hospital Sírío Libanês between January 2016 and April 2018 were enrolled in our study. Patient clinical characteristics are summarized in Table 1. The most common underlying disease was acute leukemia (60%). The majority of patients received reduced-intensity conditioning (60%) and grafts from peripheral blood (67%).

The standard antimicrobial prophylaxis in our institution included oral levofloxacin, antiviral prophylaxis with acyclovir or valacyclovir, and antifungal prophylaxis with echinocandins or azoles according to the patient's risk of fungal infection. In addition, cephalosporin and antibiotic for anaerobic bacteria (metronidazole, meropenem or piperacillin/tazobactam) were administered to 70% and 57% of patients, respectively.

aGVHD was diagnosed and classified according to the Glucksberg grading system²⁷. Fifteen patients developed grade II-IV aGVHD and, of those, 6 developed severe aGVHD (grade III-IV). None of this cohort's clinical characteristics, including graft source, conditioning regimen, GVHD prophylaxis and antibiotics usage, were significantly associated with the risk of aGVHD (supplemental Table 1).

Dental biofilm microbiota dysbiosis during allo-HSCT

Supragingival biofilm samples were collected for bacterial profiling at preconditioning, aplasia, and engraftment to characterize changes in DBM during allo-HSCT. Three engraftment samples were excluded from downstream analyses due to insufficient high-quality reads.

DBM alpha diversity was assessed using the Shannon index. We observed a statistically significant decrease in DBM alpha diversity during allo-HSCT, with engraftment samples presenting the lowest overall bacterial diversity (median at each collection phase: 4.15, 3.39, and 2.75, respectively; Figure 1A). A similar decrease in alpha diversity was observed when using the Gini-Simpson index (supplemental Figure 1A) or the number of observed ASVs as a proxy for species richness (supplemental Figure 1B).

Marked changes in DBM genera composition were observed for all patients during allo-HSCT (supplemental Figure 2). As expected, several dental biofilm commensal genera were detected at a high average relative abundance at preconditioning, including *Streptococcus* (19.5%), *Veillonella* (18.4%), *Actinomyces* (6.3%), and *Capnocytophaga* (6.1%) (Figure 1B). However, their average relative

abundance decreased during allo-HSCT. Likewise, we observed an increase in the average relative abundance of potentially pathogenic genera, such as *Enterococcus* and *Lactobacillus* (Figure 1B).

For a more quantitative assessment of DBM changes during allo-HSCT, we compared genera abundances at preconditioning and engraftment using the ANCOM test (Figure 1C). The most statistically significant differences in abundance were observed for *Enterococcus*, *Lactobacillus*, and *Mycoplasma*, confirming the expansion of these potentially pathogenic genera in DBM during allo-HSCT. We also observed statistically significant (although less pronounced in terms of relative abundance) decreases in commensal genera (Figure 1C).

Dental biofilm microbiota diversity and aGVHD risk

Patients were stratified into two equal-sized groups (high and low-diversity groups) by the entire cohort's median alpha diversity value to evaluate the association between DBM diversity and aGVHD risk. Using the Shannon diversity index, DBM diversity showed no association with the risk of aGVHD at preconditioning, aplasia, or engraftment (Figure 2A-C and Table 2). Similar results were obtained when using the Gini-Simpson diversity index or the number of observed ASVs as a proxy for species richness (supplemental Figure 3).

Dental biofilm microbiota composition and aGVHD risk

We then evaluated whether the abundance of specific genera at preconditioning, aplasia, or engraftment was associated with the risk of aGVHD (Figure 3). Only genera

present at relative abundance $\geq 0.1\%$ in at least 25% of the samples were considered for these analyses. Patients were stratified into two equal-sized groups (high and low relative abundance groups) by the median relative abundance observed in the entire cohort of each genus. *Veillonella*, *Streptococcus*, and *Corynebacterium* at preconditioning were significantly associated with the risk of aGVHD. We did not observe a similar association between the relative abundance of these or any other genus with the risk of aGVHD at aplasia or engraftment (Figure 3A).

Patients with high *Veillonella* relative abundance at preconditioning had a lower CMI of aGVHD (27% vs. 73%; HR = 0.24, 95% CI: 0.08–0.7, $P = 0.009$; Figure 3B and Table 2). This association remained significant after adjusting for graft source and intensity of the conditioning regimen (adjusted-HR = 0.21, 95% CI: 0.07–0.65, $P = 0.006$, Table 2). Patients with high *Streptococcus* or *Corynebacterium* relative abundance at preconditioning had a higher CMI of aGVHD (67% vs. 33%; HR = 2.89, 95% CI: 1.07–7.79, $P = 0.036$ and 73% vs. 37%; HR = 2.74, 95% CI: 1.05–7.15, $P = 0.04$, respectively; Figure 3C-D and Table 2). However, only *Streptococcus* remained significantly associated with risk of aGVHD after adjusting for graft source and intensity of the conditioning regimen (adjusted-HR = 3.17, 95% CI: 1.12–9.01, $P = 0.03$, Table 2).

Veillonella and *Streptococcus* showed the highest average relative abundance at preconditioning (Figure 1B). Given their overall high relative abundance and an inverse association with the risk of aGVHD, we next evaluated whether the *Veillonella/Streptococcus* ratio at preconditioning was associated with the risk of aGVHD. Patients with a *Veillonella/Streptococcus* ratio >1 at preconditioning had a lower CMI of aGVHD (29% vs. 77%; HR = 0.23, 95% CI: 0.08–0.62, $P = 0.004$; Figure

3E and Table 2). Interestingly, the association between the *Veillonella/Streptococcus* ratio at preconditioning and aGVHD risk was stronger than the association observed for each genus separately and remained significant after adjusting for graft source and intensity of the conditioning regimen (adjusted-HR = 0.22, 95% CI: 0.08–0.64, $P=0.005$, Table 2). The *Veillonella/Streptococcus* ratio at aplasia or engraftment was not associated with the risk of aGVHD (Table 2).

***Enterococcus faecalis* bloom and aGVHD risk**

Finally, we analyzed whether the blooming of potentially pathogenic genera observed during allo-HSCT was associated with the risk of aGVHD. For these analyses, bloom was defined as the sudden expansion of a particular genus from near absence (relative abundance <1% at preconditioning) to dominance (relative abundance $\geq 30\%$ at aplasia or engraftment). Analyzing variations in genera relative abundance during allo-HSCT, we observed 23 blooms, involving 12 different genera and affecting a total of 20 patients. Three patients experienced more than one blooming event (supplemental Figure 4). Patients experiencing any genus bloom ($n = 20$) did not have altered aGVHD risk (Table 2). *Enterococcus* bloom was the most frequent event (Figure 4A), observed in 20% of the patients undergoing allo-HSCT. For all patients experiencing *Enterococcus* bloom except one, the phenomenon was attributed exclusively to *Enterococcus faecalis* expansion (Figure 4B). There was no association between *E. faecalis* bloom and cephalosporin (Fisher's exact test, $P = 0.29$) or antibiotic for anaerobic bacteria usage (Fisher's exact test, $P = 1$).

We next tested whether the occurrence of *E. faecalis* bloom was associated with the risk of aGVHD. All patients experiencing *E. faecalis* bloom developed aGVHD, and *E. faecalis* bloom were strongly associated with a higher CMI of aGVHD (100% vs. 40%; HR = 4.07, 95% CI: 1.82–9.14, $P = 0.0007$; Figure 4C and Table 2). This association remained significant after adjusting for graft source and intensity of the conditioning regimen (adjusted-HR = 4.90, 95% CI: 1.66–14.50, $P = 0.004$, Table 2). Notably, CMI of severe aGVHD (grade III-IV) was higher in patients experiencing *E. faecalis* bloom (60% vs. 12%; HR = 6.82, 95% CI: 1.48–31.41, $P = 0.014$; Figure 4D; Table 2), revealing a direct association between DBM *E. faecalis* bloom and aGVHD risk and grade.

DISCUSSION

In our study, we describe, for the first time using high-throughput 16S rRNA sequencing, changes in DBM diversity and composition in 30 patients undergoing allo-HSCT. As observed for IM, DBM dysbiosis during allo-HSCT was marked by a gradual loss of bacterial diversity, with engraftment samples presenting the lowest overall bacterial diversity. Like for IM, we also observed significant changes in DBM genera composition, with a decrease in the abundance of commensal core DBM genera, such as *Streptococcus* and *Actinomyces* (the only genera that can adhere to the tooth surface to start ordinary DB formation²⁸), and overgrowths of potentially pathogenic bacteria, such as *Enterococcus*, *Lactobacillus*, and *Mycoplasma*. Most importantly, we observed that DBM genera relative abundance at preconditioning and changes in DBM composition during allo-HSCT (namely, *Enterococcus* bloom) were

both predictive of aGVHD risk after allo-HSCT. There was no association between these aGVHD-associated microbiota variables and other allo-HSCT outcomes, including chronic GVHD (supplemental Table 2).

aGVHD is a major cause of non-relapse mortality following allo-HSCT, with a one-year survival rate for patients developing severe aGVHD of only 40%²⁹. First-line therapy for aGVHD is based on corticosteroids, with response rates that vary between 40 and 70%³⁰. In this scenario, identifying biomarkers capable of predicting aGVHD risk and developing preventive therapies is critical.

Recently, the IM composition has been analyzed as a biomarker for clinical outcomes in allo-HSCT recipients, including the development of aGVHD^{7,9}. Moreover, microbiota-based therapeutic interventions, including microbiota-driven antibiotics selection, alternative dietary regimens (including probiotics/prebiotics usage) and fecal microbiota transplantation have been proposed to prevent and treat aGVHD^{31,32}.

Like the IM, the OM plays an essential role in maintaining local and systemic health. Dental biofilm (DB) bacteria, as opposed to other shedding surface-living bacteria in the oral cavity, can adhere to hard surfaces and coaggregate^{28,33}, allowing the assembly of an organized three-dimensional structure, which confers DBM its distinctive ecological properties. The DBM interacts directly with host immune cells and modulates immune homeostasis. Moreover, DBM can also act as a microbial reservoir for systemic diseases. DBM dysbiosis can trigger local inflammation, destruction of surrounding periodontal tissue, and systemic translocation of oral microbes³⁴. The influence of the OM in systemic diseases such as colorectal cancer³⁵, arthritis³⁶ and Parkinson's disease³⁷ has been increasingly studied. However, in the allo-HSCT

context, studies are still limited and have focused mainly on the saliva and the tongue microbiota^{38–41}.

Loss of bacterial diversity in the salivary microbiota of patients undergoing allo-HSCT has been previously described and associated with oral mucositis³⁹. Likewise, a steep decline in the tongue microbiota diversity was observed in severe aplastic anemia patients from preconditioning to the day of transplantation⁴⁰. On the other hand, no appreciable changes in OM during allo-HSCT were observed in an additional study evaluating 4 different oral sites (buccal mucosa, saliva, tongue and DB)³⁸. However, this latter study used a low-resolution methodology (microarray) for microbiota characterization in a small number of patients (n = 11). Noteworthy, a single study evaluated the association between OM and allo-HSCT outcomes⁴¹. Allo-HSCT recipients showed a less diverse and distinct tongue microbiota on the day of transplantation than that of community-dwelling adults. In this study, the presence of the non-commensal bacteria *Staphylococcus haemolyticus* and/or *Ralstonia pickettii* in the tongue microbiota was significantly associated with lower overall survival after allo-HSCT, but not with aGVHD.

Out of the many allo-HSCT outcomes evaluated so far⁴², aGVHD onset has the clearest causal connection to the IM^{31,32,42}. Briefly, it has been shown that the loss of SCFA-producing Clostridia species during the conditioning regimen reduces the concentration of intestinal butyrate⁴³, a metabolite used as an energy source by intestinal epithelial cells⁴⁴ and capable of promoting mucosal integrity⁴⁵. Low butyrate levels promote extravasation of bacterial lipopolysaccharide through the damaged intestinal barrier, activating donor reactive T cells⁴². Additionally, lower butyrate levels

correlate with lower abundance of regulatory T cells⁴⁶ and impaired T-cell mediated local immune suppression³¹. Moreover, the loss of commensal bacteria that produce indole-3-aldehyde (including Clostridia class members), a metabolite that modulates barrier integrity by stimulating intestinal stem cell growth, is also linked to aGVHD development⁴⁷. Finally, *Enterococcus faecalis* might contribute to aGVHD development via production of metalloproteases that impair barrier function⁴⁸ and by stimulating macrophages to secrete TNF⁴⁹. Accordingly, low IM diversity at the time of stem cell engraftment^{8,9}, low abundance of commensal bacteria from Clostridia class members^{9,10,50}, and intestinal enterococci dominance during allo-HSCT¹² have been all associated with worsened aGVHD-related outcomes in studies evaluating stool specimens from allo-HSCT recipients^{31,32,42}.

In our study, DBM diversity was not associated with the risk of aGVHD in any transplantation phase evaluated, which is in line with a recent IM study that did not find differences in IM diversity between aGVHD groups neither pre- nor post-transplantation⁵¹. Also, despite the presence (as expected⁵²) of many Clostridia class genera in DBM (such as *Oribacterium*), we did not find DBM Clostridia class members significantly associated with the risk of aGVHD. However, as for IM, we observed a decrease in the relative abundance of several DB commensal genera during allo-HSCT, such as *Streptococcus*, *Veillonella*, *Actinomyces*, and *Capnocytophaga*, and an increase in the relative abundance of potentially pathogenic genera such as *Enterococcus* and *Lactobacillus*. Most importantly, high *Streptococcus* and high *Corynebacterium* relative abundance at preconditioning were associated with a higher

risk of aGVHD, while high *Veillonella* relative abundance at preconditioning was associated with a lower risk of aGVHD.

Streptococci, corynebacteria, and veillonellae are part of the core DBM⁵³ and represent the 1st, 2nd and 10th most important genera in terms of relative abundance in healthy volunteers DBM, respectively⁵². In our study, streptococci and veillonellae showed the highest average relative abundance at preconditioning and were both associated with the risk of aGVHD. Given their overall high relative abundance and the relative nature of the data, higher *Veillonella* relative abundance imposes lower *Streptococcus* relative abundance and vice versa. Hence, it is not possible to determine whether both genera are genuinely associated with the risk of aGVHD. Interestingly, the association between the *Veillonella*/*Streptococcus* ratio at preconditioning and aGVHD risk, independently of the conditioning regimen and graft source, was stronger than the association observed for each genus separately, suggesting a partial role for both genera in the observed effect.

During DB formation, bacterial early colonizers, after adhering to teeth salivary pellicles, coaggregate with other early and late colonizers, and a repeatable microbial succession takes place on the tooth surface²⁸. Streptococci are the most abundant microbe in DB, representing a predominant early colonizer with broad coaggregation partnerships. Streptococci and veillonellae are in close physical contact during the early phases of DB maturation^{28,54} and can grow together in a metabolic cooperation-dependent manner^{28,54,55}. Since this interaction occurs in the early phases of DB formation (and therefore are instrumental for DB maturation), the ratio

Veillonella/Streptococcus might be a marker of early DBM disruption associated with a higher risk of aGVHD.

Corynebacteria bridge the early biofilm members to late colonizers⁵³. In contradiction with the documented in the aforementioned healthy volunteers study⁵², we did not observe a high corynebacteria average relative abundance in any of the allo-HSCT phases evaluated. It is possible that the overall lower relative abundance of corynebacteria in detriment of early colonizers (such as streptococci and veillonellae) in our study may be indicative of a basal DBM disruption afflicting all allo-HSCT recipients. Alternatively, the lower relative abundance of corynebacteria may be explained by the stricter oral hygiene protocol recommended to our patients.

Finally, in our study, *E. faecalis* bloom in the DBM was observed in 20% of allo-HSCT recipients and was significantly associated with a higher risk of aGVHD and saGVHD. Noteworthy, despite recent in vitro evidence suggesting that high-dose of cephalosporin may promote *E. faecalis* biofilm formation⁵⁶, there was no association between cephalosporin usage and DBM *E. faecalis* bloom in the evaluated cohort.

During allo-HSCT, intestinal enterococci expansion is well documented and is linked to both aGVHD development¹² and subsequent bacteremia⁵⁷. Notably, *E. faecalis* alone exacerbates aGVHD severity in gnotobiotic mouse models¹². Our study reveals an additional site with enterococci expansion that might have systemic impacts after allo-HSCT. We can speculate that, during allo-HSCT, the dysbiotic DBM may act as an enterococci reservoir, triggering translocation to the gut and intestinal enterococci domination. This possibility is corroborated by the fact that there is intense oral bacteria translocation to the gut in hepatic cirrhosis patients⁵⁸ and that such translocations in

colorectal cancer patients are negatively correlated with intestinal Clostridia bacteria presence³⁵. Indeed, oral bacteria translocation to the gut has been described in allo-HSCT recipients, and the presence of oral Actinobacteria and oral Firmicutes in stool samples of these patients was positively correlated with subsequent aGVHD development⁷. Alternatively, DBM enterococci may have an intestinal origin, since the injury to Goblet cells during conditioning regimen was shown to induce dissemination of dominant intestinal bacteria³¹. Further studies evaluating synchronously IM and DBM are necessary to decipher whether IM and DBM enterococci bloom are linked and which event precedes the other. Importantly, enterococci are present in small amounts in the healthy OM⁵² but may overgrow in pathogenic/dysbiotic settings, including after solid organ transplantation⁵⁹, in a biofilm-dependent manner⁶⁰. This may explain why previous microbiota studies on soft oral sites have not reported the expansion of *Enterococcus* in allo-HSCT recipients.

In conclusion, to our knowledge, this is the first study evaluating the DBM during allo-HSCT using a high-resolution technique. We identified markers of DBM dysbiosis during allo-HSCT. Most importantly, we showed that DBM composition during allo-HSCT may be predictive of aGVHD onset after transplantation, providing a simple and reproducible protocol for collection and analysis of allo-HSCT recipient's microbiota before transplantation that may substitute fecal sampling when evaluating gastrointestinal dysbiosis and *Enterococcus* bloom. Nevertheless, our study has many limitations, especially being single-centered and having a limited sample size. Also, the study patients analyzed are heterogeneous and encompass several underlying diseases. Therefore, validation cohorts and prospective studies are needed to confirm

our findings and test whether early interventions to correct DBM dysbiosis could prevent aGVHD onset. Further studies on DBM during allo-HSCT that include synchronous fecal sampling and metabolomics analyses are also needed to correlate our findings with aGVHD pathophysiology.

ACKNOWLEDGEMENTS

V.H. was supported by Fundação de Amparo à Pesquisa do Estado de São Paulo (FAPESP, process no. 13996-0/2018). V.C.M. was supported by Conselho Nacional de Desenvolvimento Científico e Tecnológico (CNPq, process no. 141575/2018-2). J.S.B. was supported by Coordenação de Aperfeiçoamento de Pessoal de Nível Superior (CAPES, process no. 001).

AUTHORSHIP CONTRIBUTIONS

A.A.C. and E.R.F. designed the study; F.H.K, P.F.A., V.H., J.S.B. and W.M.-S. performed the sequencing; V.H. and A.A.C. developed the bioinformatics pipeline; V.H., J.S.B., V.C.M., C.A.-R., E.R.F., and A.A.C. contributed to the analysis and interpretation of data; V.H., J.S.B., V.C.M., C.A.-R. and A.A.C. contributed to writing the manuscript. All authors have read and approved the final manuscript. All authors are accountable for all aspects of the work.

DISCLOSURE OF CONFLICTS OF INTEREST

The authors declare that there is no conflict of interest regarding this publication.

REFERENCES

1. Copelan, E. A., Chojecki, A., Lazarus, H. M. & Avalos, B. R. Allogeneic hematopoietic cell transplantation; the current renaissance. *Blood Rev.* 34, 34–44 (2019).
2. Styczyński, J. *et al.* Death after hematopoietic stem cell transplantation: changes over calendar year time, infections and associated factors. *Bone Marrow Transplant.* 55, 126–136 (2020).
3. Tanaka, Y. *et al.* Analysis of non-relapse mortality and causes of death over 15 years following allogeneic hematopoietic stem cell transplantation. *Bone Marrow Transplant.* 51, 553–559 (2016).
4. Schoemans, H. M. *et al.* EBMT-NIH-CIBMTR Task Force position statement on standardized terminology & guidance for graft-versus-host disease assessment. *Bone Marrow Transplant.* 53, 1401–1415 (2018).
5. Greinix, H. T. *et al.* Incidence of Acute Graft-Versus-Host Disease and Survival after Allogeneic Hematopoietic Cell Transplantation over Time: A Study from the Transplant Complications and Chronic Malignancies Working Party of the EBMT. *Blood* 132, 2120–2120 (2018).
6. Zeiser, R. & Blazar, B. R. Acute Graft-versus-Host Disease - Biologic Process, Prevention, and Therapy. *N. Engl. J. Med.* 377, 2167–2179 (2017).
7. Golob, J. L. *et al.* Stool Microbiota at Neutrophil Recovery Is Predictive for Severe Acute Graft vs Host Disease After Hematopoietic Cell Transplantation. *Clin. Infect. Dis. Off. Publ. Infect. Dis. Soc. Am.* 65, 1984–1991 (2017).
8. Taur, Y. *et al.* The effects of intestinal tract bacterial diversity on mortality following allogeneic hematopoietic stem cell transplantation. *Blood* 124, 1174–1182 (2014).
9. Jenq, R. R. *et al.* Intestinal *Blautia* Is Associated with Reduced Death from Graft-versus-Host Disease. *Biol. Blood Marrow Transplant. J. Am. Soc. Blood Marrow Transplant.* 21, 1373–1383 (2015).
10. Payen, M. *et al.* Functional and phylogenetic alterations in gut microbiome are linked to graft-versus-host disease severity. *Blood Adv.* 4, 1824–1832 (2020).
11. Holler, E. *et al.* Metagenomic analysis of the stool microbiome in patients receiving allogeneic stem cell transplantation: loss of diversity is associated with use of systemic antibiotics and more pronounced in gastrointestinal graft-versus-host disease. *Biol. Blood*

- Marrow Transplant. J. Am. Soc. Blood Marrow Transplant.* 20, 640–645 (2014).
12. Stein-Thoeringer, C. K. *et al.* Lactose drives Enterococcus expansion to promote graft-versus-host disease. *Science* 366, 1143–1149 (2019).
 13. Olsen, I. & Yamazaki, K. Can oral bacteria affect the microbiome of the gut? *J. Oral Microbiol.* 11, (2019).
 14. Olsen, I., Lambris, J. D. & Hajishengallis, G. Porphyromonas gingivalis disturbs host-commensal homeostasis by changing complement function. *J. Oral Microbiol.* 9, 1340085 (2017).
 15. Atarashi, K. *et al.* Ectopic colonization of oral bacteria in the intestine drives TH1 cell induction and inflammation. *Science* 358, 359–365 (2017).
 16. Sharma, N., Bhatia, S., Sodhi, A. S. & Batra, N. Oral microbiome and health. *AIMS Microbiol.* 4, 42–66 (2018).
 17. Moutsopoulos, N. M. & Konkel, J. E. Tissue-Specific Immunity at the Oral Mucosal Barrier. *Trends Immunol.* 39, 276–287 (2018).
 18. Klindworth, A. *et al.* Evaluation of general 16S ribosomal RNA gene PCR primers for classical and next-generation sequencing-based diversity studies. *Nucleic Acids Res.* 41, e1 (2013).
 19. Wang, H. *et al.* Breast tissue, oral and urinary microbiomes in breast cancer. *Oncotarget* 8, 88122–88138 (2017).
 20. Bolyen, E. *et al.* Reproducible, interactive, scalable and extensible microbiome data science using QIIME 2. *Nat. Biotechnol.* 37, 852–857 (2019).
 21. Edgar, R. C. & Flyvbjerg, H. Error filtering, pair assembly and error correction for next-generation sequencing reads. *Bioinforma. Oxf. Engl.* 31, 3476–3482 (2015).
 22. Callahan, B. J. *et al.* DADA2: High-resolution sample inference from Illumina amplicon data. *Nat. Methods* 13, 581–583 (2016).
 23. Quast, C. *et al.* The SILVA ribosomal RNA gene database project: improved data processing and web-based tools. *Nucleic Acids Res.* 41, D590-596 (2013).
 24. Edgar, R. C., Haas, B. J., Clemente, J. C., Quince, C. & Knight, R. UCHIME improves sensitivity and speed of chimera detection. *Bioinforma. Oxf. Engl.* 27, 2194–2200 (2011).
 25. Rognes, T., Flouri, T., Nichols, B., Quince, C. & Mahé, F. VSEARCH: a versatile open

- source tool for metagenomics. *PeerJ* 4, e2584 (2016).
26. Kaul, A., Mandal, S., Davidov, O. & Peddada, S. D. Analysis of Microbiome Data in the Presence of Excess Zeros. *Front. Microbiol.* 8, 2114 (2017).
 27. Glucksberg, H. *et al.* Clinical manifestations of graft-versus-host disease in human recipients of marrow from HL-A-matched sibling donors. *Transplantation* 18, 295–304 (1974).
 28. Kolenbrander, P. E., Palmer, R. J., Periasamy, S. & Jakubovics, N. S. Oral multispecies biofilm development and the key role of cell-cell distance. *Nat. Rev. Microbiol.* 8, 471–480 (2010).
 29. Khoury, H. J. *et al.* Improved survival after acute graft-versus-host disease diagnosis in the modern era. *Haematologica* 102, 958–966 (2017).
 30. Garnett, C., Apperley, J. F. & Pavlů, J. Treatment and management of graft-versus-host disease: improving response and survival. *Ther. Adv. Hematol.* 4, 366–378 (2013).
 31. Kumari, R., Palaniyandi, S. & Hildebrandt, G. C. Microbiome: An Emerging New Frontier in Graft-Versus-Host Disease. *Dig. Dis. Sci.* 64, 669–677 (2019).
 32. Staffas, A., Burgos da Silva, M. & van den Brink, M. R. M. The intestinal microbiota in allogeneic hematopoietic cell transplant and graft-versus-host disease. *Blood* 129, 927–933 (2017).
 33. Kolenbrander, P. E. & London, J. Adhere today, here tomorrow: oral bacterial adherence. *J. Bacteriol.* 175, 3247–3252 (1993).
 34. Vieira Colombo, A. P., Magalhães, C. B., Hartenbach, F. A. R. R., Martins do Souto, R. & Maciel da Silva-Boghossian, C. Periodontal-disease-associated biofilm: A reservoir for pathogens of medical importance. *Microb. Pathog.* 94, 27–34 (2016).
 35. Flemer, B. *et al.* The oral microbiota in colorectal cancer is distinctive and predictive. *Gut* 67, 1454–1463 (2018).
 36. Lorenzo, D. *et al.* Oral-Gut Microbiota and Arthritis: Is There an Evidence-Based Axis? *J. Clin. Med.* 8, (2019).
 37. Pereira, P. A. B. *et al.* Oral and nasal microbiota in Parkinson's disease. *Parkinsonism Relat. Disord.* 38, 61–67 (2017).
 38. Ames, N. J. *et al.* A characterization of the oral microbiome in allogeneic stem cell transplant patients. *PLoS One* 7, e47628 (2012).

39. Shouval, R. *et al.* Patterns of salivary microbiota injury and oral mucositis in recipients of allogeneic hematopoietic stem cell transplantation. *Blood Adv.* 4, 2912–2917 (2020).
40. Ames, N. J. *et al.* The oral microbiome of patients undergoing treatment for severe aplastic anemia: a pilot study. *Ann. Hematol.* 98, 1351–1365 (2019).
41. Oku, S. *et al.* Disrupted tongue microbiota and detection of nonindigenous bacteria on the day of allogeneic hematopoietic stem cell transplantation. *PLoS Pathog.* 16, e1008348 (2020).
42. Shono, Y. & van den Brink, M. R. M. Gut microbiota injury in allogeneic haematopoietic stem cell transplantation. *Nat. Rev. Cancer* 18, 283–295 (2018).
43. Ganapathy, V., Thangaraju, M., Prasad, P. D., Martin, P. M. & Singh, N. Transporters and receptors for short-chain fatty acids as the molecular link between colonic bacteria and the host. *Curr. Opin. Pharmacol.* 13, 869–874 (2013).
44. Canani, R. B. *et al.* Potential beneficial effects of butyrate in intestinal and extraintestinal diseases. *World J. Gastroenterol.* 17, 1519–1528 (2011).
45. Mathewson, N. D. *et al.* Gut microbiome-derived metabolites modulate intestinal epithelial cell damage and mitigate graft-versus-host disease. *Nat. Immunol.* 17, 505–513 (2016).
46. Atarashi, K. *et al.* Treg induction by a rationally selected mixture of Clostridia strains from the human microbiota. *Nature* 500, 232–236 (2013).
47. Ferrara, J. L. M. & Chaudhry, M. S. GVHD: biology matters. *Hematol. Am. Soc. Hematol. Educ. Program* 2018, 221–227 (2018).
48. Steck, N. *et al.* Enterococcus faecalis metalloprotease compromises epithelial barrier and contributes to intestinal inflammation. *Gastroenterology* 141, 959–971 (2011).
49. Kim, S. O., Sheikh, H. I., Ha, S.-D., Martins, A. & Reid, G. G-CSF-mediated inhibition of JNK is a key mechanism for Lactobacillus rhamnosus-induced suppression of TNF production in macrophages. *Cell. Microbiol.* 8, 1958–1971 (2006).
50. Jenq, R. R. *et al.* Regulation of intestinal inflammation by microbiota following allogeneic bone marrow transplantation. *J. Exp. Med.* 209, 903–911 (2012).
51. Ilett, E. E. *et al.* Associations of the gut microbiome and clinical factors with acute GVHD in allogeneic HSCT recipients. *Blood Adv.* 4, 5797–5809 (2020).
52. Segata, N. *et al.* Composition of the adult digestive tract bacterial microbiome based on seven mouth surfaces, tonsils, throat and stool samples. *Genome Biol.* 13, R42 (2012).

53. Mark Welch, J. L., Rossetti, B. J., Rieken, C. W., Dewhirst, F. E. & Borisy, G. G. Biogeography of a human oral microbiome at the micron scale. *Proc. Natl. Acad. Sci. U. S. A.* 113, E791-800 (2016).
54. Mashima, I. & Nakazawa, F. The interaction between *Streptococcus* spp. and *Veillonella tobetsuensis* in the early stages of oral biofilm formation. *J. Bacteriol.* 197, 2104–2111 (2015).
55. Chalmers, N. I., Palmer, R. J., Cisar, J. O. & Kolenbrander, P. E. Characterization of a *Streptococcus* sp.-*Veillonella* sp. community micromanipulated from dental plaque. *J. Bacteriol.* 190, 8145–8154 (2008).
56. Thieme, L. *et al.* In vitro synergism and anti-biofilm activity of ampicillin, gentamicin, ceftaroline and ceftriaxone against *Enterococcus faecalis*. *J. Antimicrob. Chemother.* 73, 1553–1561 (2018).
57. Taur, Y. *et al.* Intestinal domination and the risk of bacteremia in patients undergoing allogeneic hematopoietic stem cell transplantation. *Clin. Infect. Dis. Off. Publ. Infect. Dis. Soc. Am.* 55, 905–914 (2012).
58. Qin, N. *et al.* Alterations of the human gut microbiome in liver cirrhosis. *Nature* 513, 59–64 (2014).
59. Diaz, P. I. *et al.* Transplantation-associated long-term immunosuppression promotes oral colonization by potentially opportunistic pathogens without impacting other members of the salivary bacteriome. *Clin. Vaccine Immunol. CVI* 20, 920–930 (2013).
60. Ch'ng, J.-H., Chong, K. K. L., Lam, L. N., Wong, J. J. & Kline, K. A. Biofilm-associated infection by enterococci. *Nat. Rev. Microbiol.* 17, 82–94 (2019).

TABLES

	n = 30
Sex (Male)	16 (53%)
Age in years (median, range)	50 (19-73)
Underlying disease	
Acute Leukemia	18 (60%)
Other	12 (40%)
Conditioning intensity	
Reduced intensity	18 (60%)
Total body irradiation	11 (37%)
Pre-transplant T-cell depletion	15 (50%)
Graft source	
Bone marrow	10 (33%)
Peripheral Blood	20 (67%)
Donor	
Matched sibling	9 (30%)
Haploidentical	10 (33%)
Matched unrelated	9 (30%)
Mismatched unrelated	2 (7%)
GVHD prophylaxis	
MMF + CsA	11 (37%)
MTX + CsA	10 (33%)
MMF + CsA + PTCy	9 (30%)
Follow- up in months (median, range)	37 (25-46)

Table 1: Clinical characteristics of study patients. HCT-CI, Hematopoietic cell transplantation-specific comorbidity index; MMF, mycophenolate mofetil; MTX, methotrexate; CsA, cyclosporin A; PTCy, post-transplant cyclophosphamide.

	Non-adjusted		Adjusted									
			<i>Veillonella</i> at P		<i>Streptococcus</i> at P		<i>Corynebacterium</i> at P		Ratio at P		<i>E. faecalis</i> bloom	
	HR (95% CI)	P-value	HR (95% CI)	P-value	HR (95% CI)	P-value	HR (95% CI)	P-value	HR (95% CI)	P-value	HR (95% CI)	P-value
Graft source (Bone Marrow)	0.95 (0.35-2.63)	0.92	1.42 (0.43-9.03)	0.38	0.75 (0.23-2.46)	0.64	1.42 (0.40-5.04)	0.59	0.78 (0.25-2.46)	0.67	1.63 (0.42-6.35)	0.49
Conditioning intensity (Myeloablative)	0.74 (0.26-2.17)	0.59	0.50 (0.11-2.32)	0.37	0.79 (0.24-2.61)	0.7	0.79 (0.20-3.04)	0.73	0.92 (0.27-3.16)	0.89	0.94 (0.24-3.61)	0.92
Diversity (Shannon) at P (High vs. Low)	0.68 (0.26-1.78)	0.43	-	-	-	-	-	-	-	-	-	-
Diversity (Shannon) at A (High vs. Low)	0.88 (0.33-2.31)	0.79	-	-	-	-	-	-	-	-	-	-
Diversity (Shannon) at E (High vs. Low)	0.92 (0.33-2.58)	0.87	-	-	-	-	-	-	-	-	-	-
<i>Veillonella</i> at P (High vs. Low)	0.24 (0.08-0.70)	0.009	0.21 (0.07-0.65)	0.006	-	-	-	-	-	-	-	-
<i>Streptococcus</i> at P (High vs. Low)	2.89 (1.07-7.79)	0.036	-	-	3.17 (1.12-9.01)	0.03	-	-	-	-	-	-
<i>Corynebacterium</i> at P (High vs. Low)	2.74 (1.05-7.15)	0.04	-	-	-	-	2.79 (0.99-7.9)	0.053	-	-	-	-
Ratio at P (>1 vs. ≤1)	0.23 (0.08-0.62)	0.004	-	-	-	-	-	-	0.22 (0.08-0.64)	0.005	-	-
Ratio at A (>1 vs. ≤1)	0.45 (0.16-1.23)	0.12	-	-	-	-	-	-	-	-	-	-
Ratio at E (>1 vs. ≤1)	0.73 (0.27-1.98)	0.54	-	-	-	-	-	-	-	-	-	-
Any genus bloom (Yes vs. No)	2.29 (0.63-2.36)	0.21	-	-	-	-	-	-	-	-	-	-
<i>E. faecalis</i> bloom (Yes vs. No)	4.07 (1.82-9.14)	0.0007	-	-	-	-	-	-	-	-	4.90 (1.66-14.5)	0.004

Table 2: Univariate (non-adjusted) and adjusted competing risk analyses for the association of aGVHD with relevant microbiota variables. Each multivariate model adjusts for graft source and conditioning intensity. Statistically significant associations are emphasized. HR, Hazard ratio; CI, Confidence interval; P, preconditioning; A, aplasia; E, engraftment.

FIGURE LEGENDS

Figure 1: Characterization of dental biofilm microbiota (DBM) during allo-HSCT.

(A) DBM alpha diversity (Shannon) boxplots at preconditioning (n = 30), aplasia (n = 30) and engraftment (n = 27). Mann-Whitney U test was used with the preconditioning as the reference for comparisons. The boxes highlight the median value and cover the 25th and 75th percentiles, with whiskers extending to the more extreme value within 1.5 times the length of the box. (B) Average BM genera relative abundance composition across transplantation phases. Only genera with at least 0.1% relative abundance in at least 25% study samples are shown. Taxa are sorted based on taxonomic relatedness. (C) Significant genera relative abundance variations from preconditioning to engraftment according to ANCOM test ($W > 0.7$). $\log_2(\text{Fold Change})$ for the average relative abundance variation (Engraftment/Preconditioning) is shown.

Figure 2: DBM alpha diversity is not associated with the risk of aGVHD. (A-C)

Cumulative incidence of aGVHD with patients stratified by Shannon diversity index (High vs. Low) at preconditioning (A; n = 30), aplasia (B; n = 30) or engraftment (C; n = 27).

Figure 3: Specific genera relative abundance at preconditioning are associated

with the risk of aGVHD. (A) Volcano plot for the univariate competing risk analysis for the association of aGVHD with genera relative abundance (hazard ratio vs. P-value) at preconditioning (left), aplasia (center) and engraftment (right). Only genera with $\geq 0.1\%$ relative abundance in at least 25% of samples at a given phase were evaluated. Genera

with P-value < 0.4 for the association are indicated explicitly. (B-D) Cumulative incidence of aGVHD with patients (n = 30) stratified by either *Veillonella* (B), *Streptococcus* (C) or *Corynebacterium* (D) relative abundance at preconditioning (High vs. Low). (E) Cumulative incidence of aGVHD with patients (n = 30) stratified by *Veillonella*/*Streptococcus* relative abundance ratio at preconditioning (>1 vs. ≤1).

Figure 4: Dental biofilm *Enterococcus faecalis* bloom during allo-HSCT is associated with a higher risk of aGVHD and severe aGVHD (saGVHD). (A) Number of observed blooming events per genera in all patients (n = 30). The number of *Enterococcus* blooms caused exclusively by *Enterococcus faecalis* is indicated. (B) Relative abundance of *Enterococcus faecalis* across transplantation phases for all patients experiencing *Enterococcus faecalis* bloom (n = 5). Patients are sorted based on the highest *Enterococcus faecalis* relative abundance observed per patient. White horizontal dashed line indicates dominance threshold. P, Preconditioning; A, Aplasia; E, Engraftment. (C-D) Cumulative incidence of aGVHD (C) or saGVHD (D) with patients (n = 30) stratified by *Enterococcus faecalis* bloom occurrence (No vs. Yes).

FIGURES

Figure 1

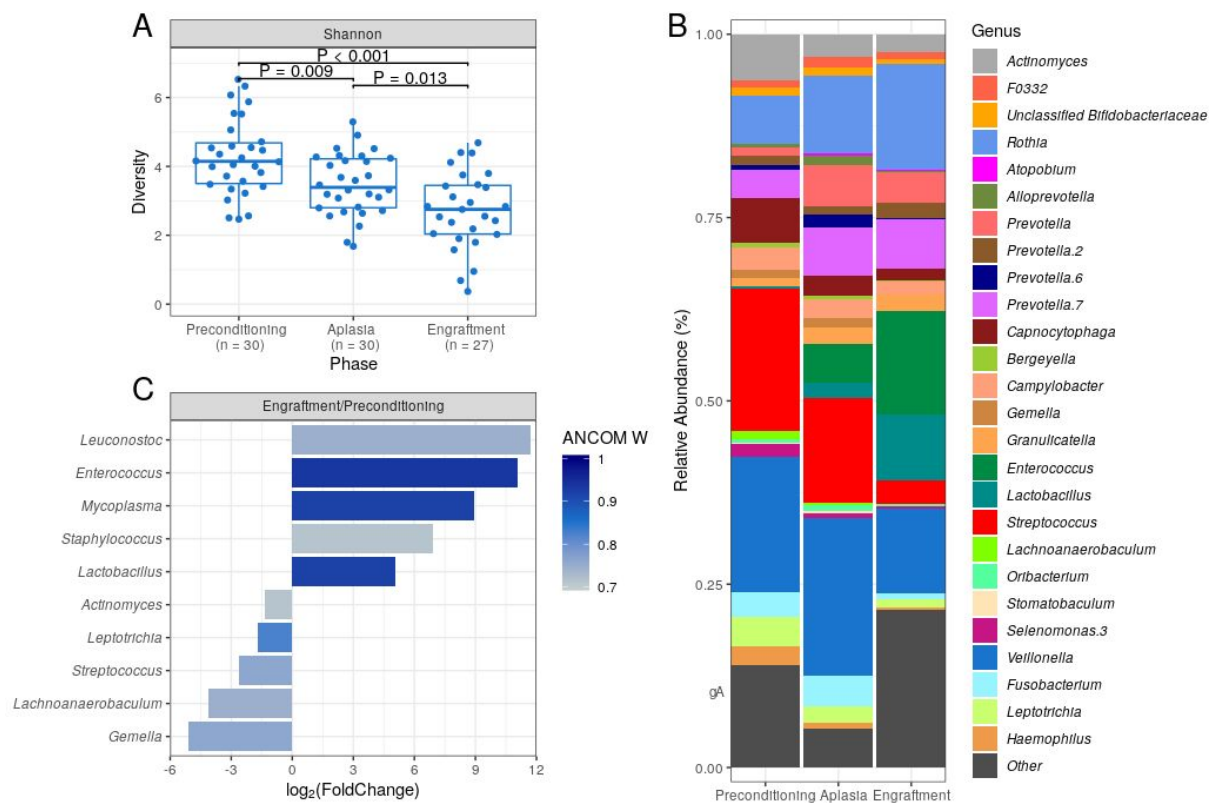


Figure 2

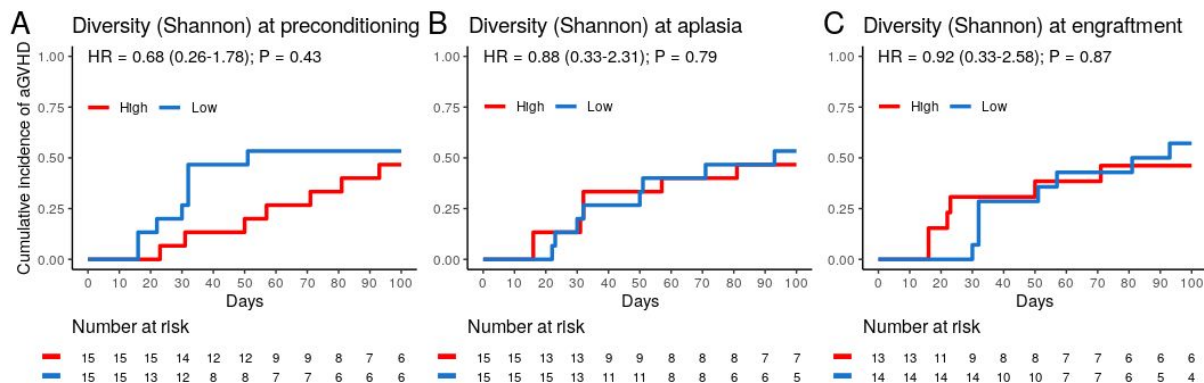


Figure 3

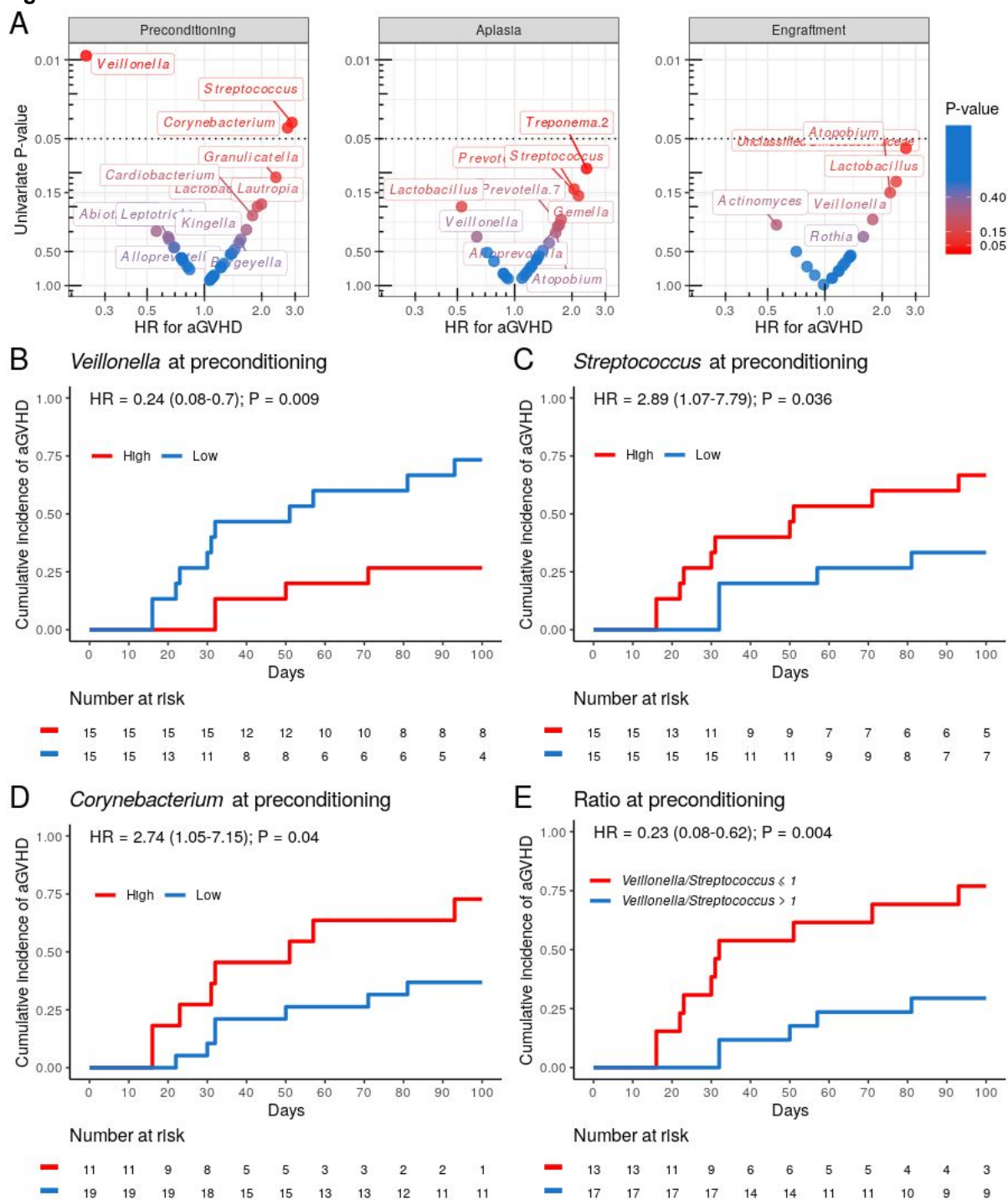


Figure 4

