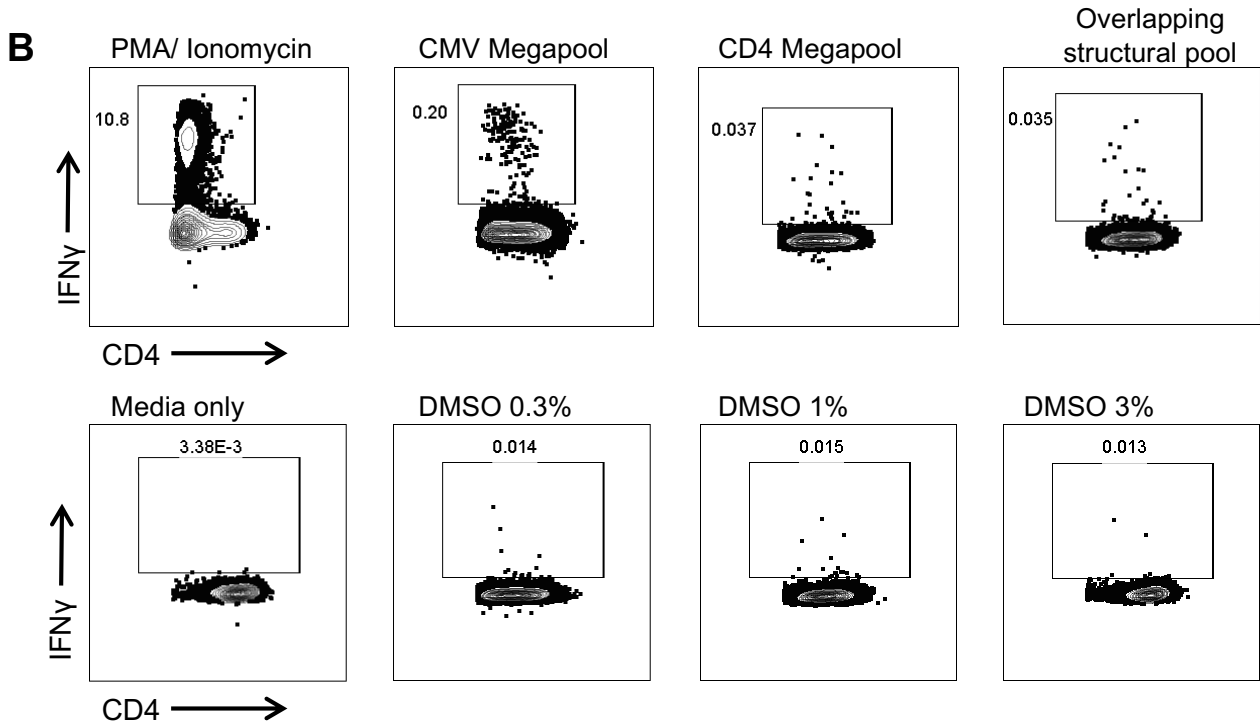
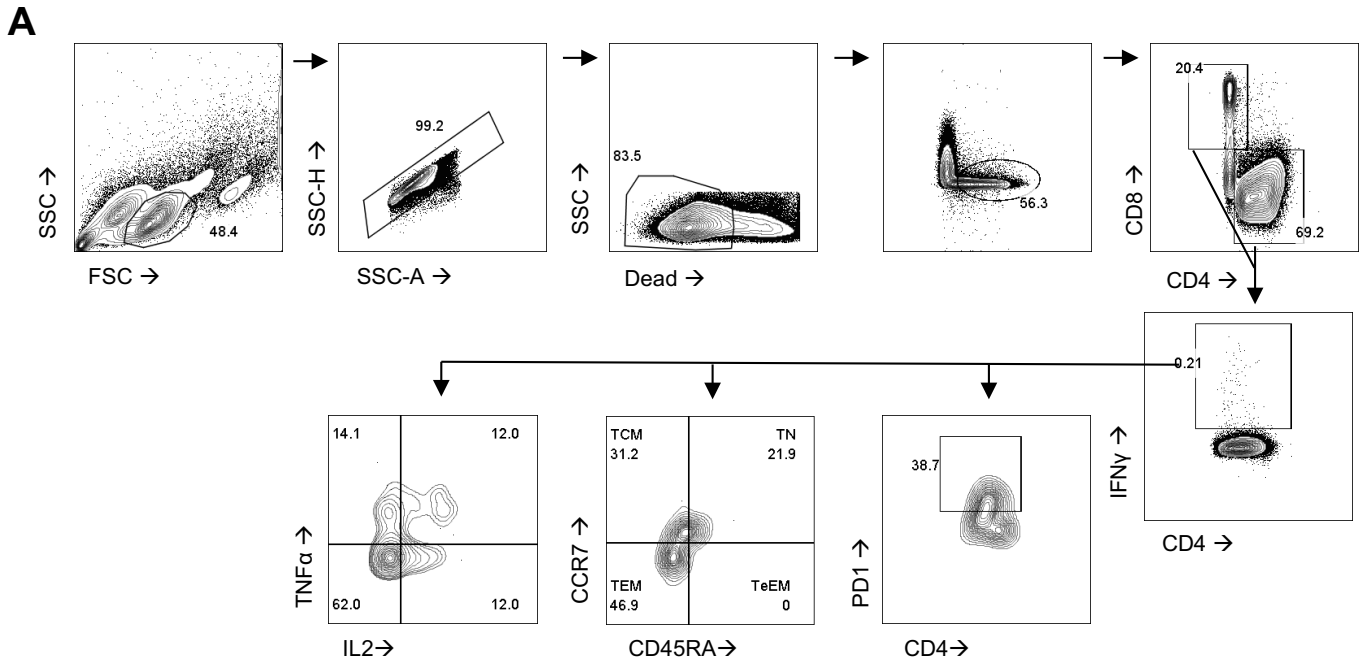


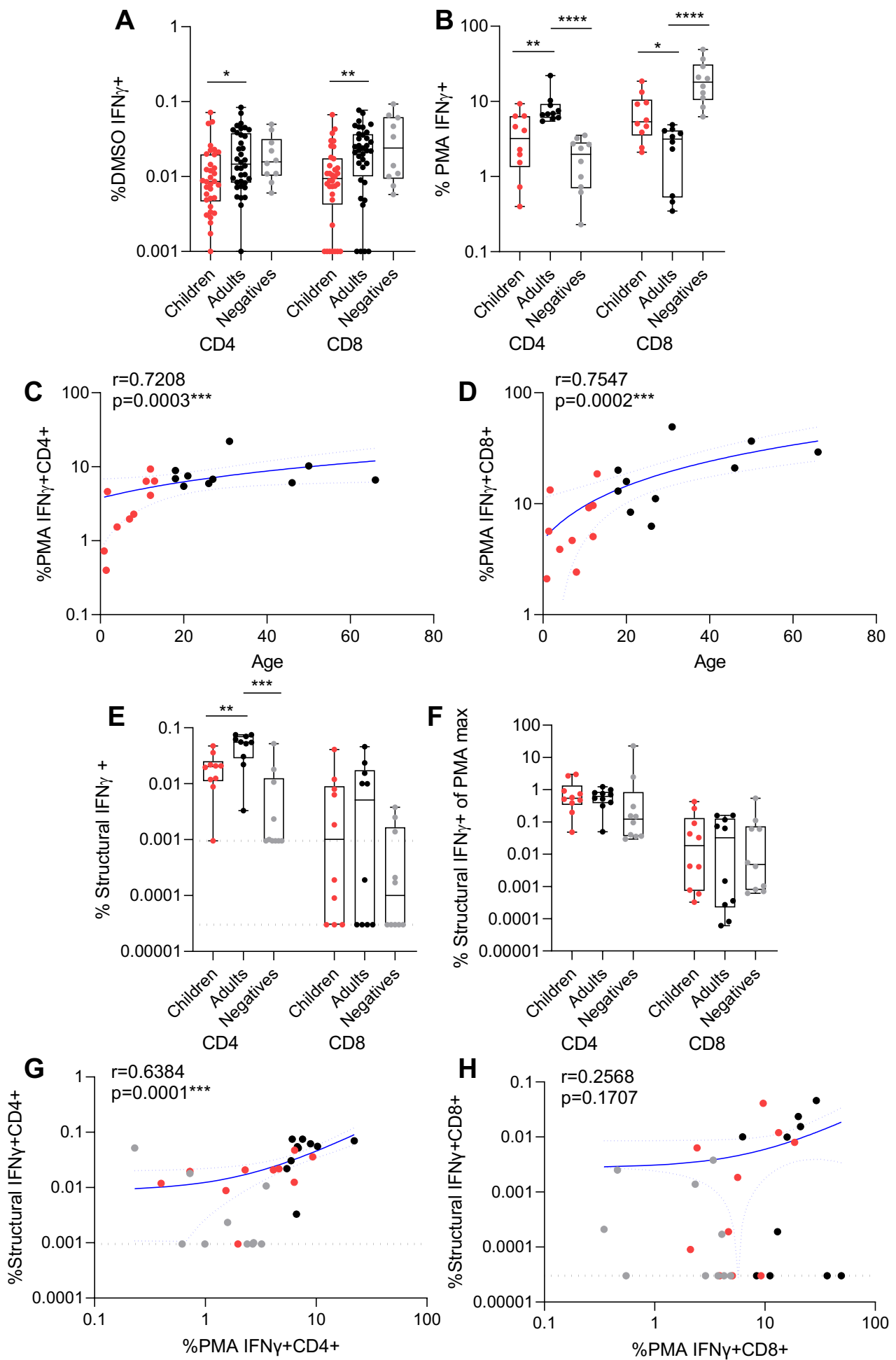
Supplementary Table 1. T cell response in COVID-19 patients, trend and versus controls

T cells	Trend days after symptom onset		Children vs Adults		COVID-19 cases vs Controls			
	Estimate	P-value	Estimate	P-value	Median (case)	Median (negative)	P-value	
CD4	Structural IFN γ^+ (total)	0.000012	0.920	-0.029	0.01	0.0479	0.00999	0.003
	ORF1ab IFN γ^+ (total)	0.00016	0.310	0.017	0.297	0.0235	0.0115	0.004
	Accessory IFN γ^+ (total)	-0.000037	0.256	-0.0043	0.153	0.0124	0.0134	0.350
	Structural TEM	0.0032	0.950	-3.2	0.493	88.7	89.5	0.552
	Structural TCM	-0.017	0.577	1.5	0.625	9.28	8.54	0.752
	Structural IFN γ^+ TNF α^+	-0.0000095	0.637	-6.00E-04	0.756	0.00436	0.000813	0.051
	Structural IFN γ^+ TNF α^+ IL2 $^+$	-0.000086	0.003	-0.0077	0.232	0.00342	0.000723	0.068
CD8	Structural IFN γ^+ (total)	0.00014	0.592	-0.094	0.009	0.0345	0.0395	0.884
	ORF1ab IFN γ^+ (total)	0.00052	0.596	-0.27	0.008	0.101	0.101	0.818
	Accessory IFN γ^+ (total)	-0.000029	0.084	-0.0021	0.184	0.00796	0.0157	0.156
	Structural TEM	-0.045	0.452	7.7	0.232	77.4	68.5	0.350
	Structural TCM	0.10	0.006	-2.1	0.546	10.6	20.6	0.022
	Structural IFN γ^+ TNF α^+	0.0000050	0.678	-0.0015	0.219	0.000595	0	0.036
	Structural IFN γ^+ TNF α^+ IL2 $^+$	0.00000031	0.845	-0.00041	0.276	0	0	0.315

* P value by Mann-Whitney test, significant values in red

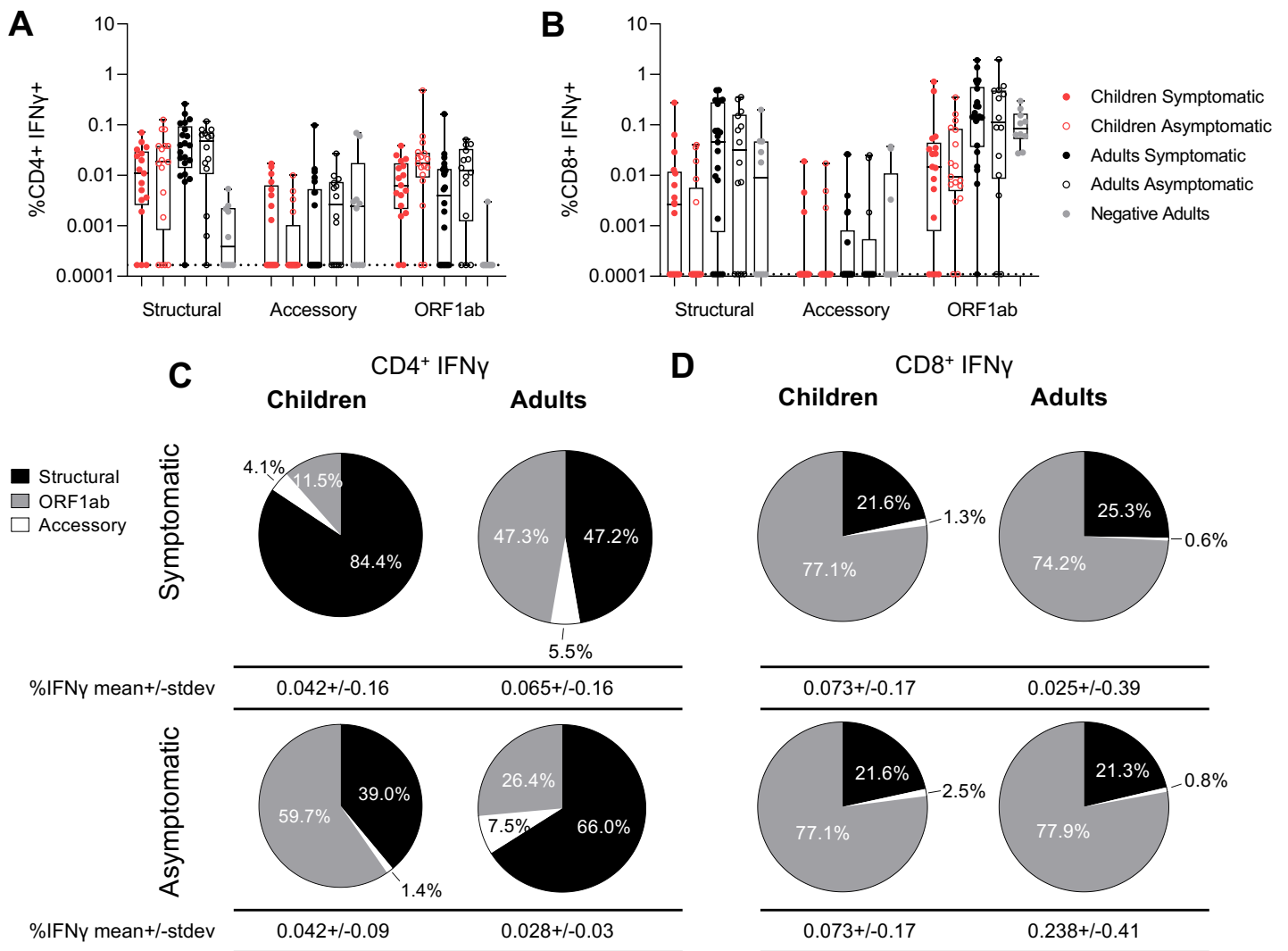


Supplementary Figure 1 – SARS-CoV-2 specific cells for cytokine production and phenotype by Flow cytometry. (A) The gating strategy for the characterisation of IFN γ ⁺ responses for CD4⁺ and CD8⁺ T cells for cytokine production (IFN γ , TNF α , IL-2), memory phenotype (CCR7, CD45RA), and exhaustion markers (PD-1). (B) FACS plots showing CD4⁺ IFN γ production to positive controls, PMA/Ionomycin, a CMV megapool and a CD4 specific megapool (from Grifoni *et al.* 2020), and negative controls with a range of DMSO concentrations.



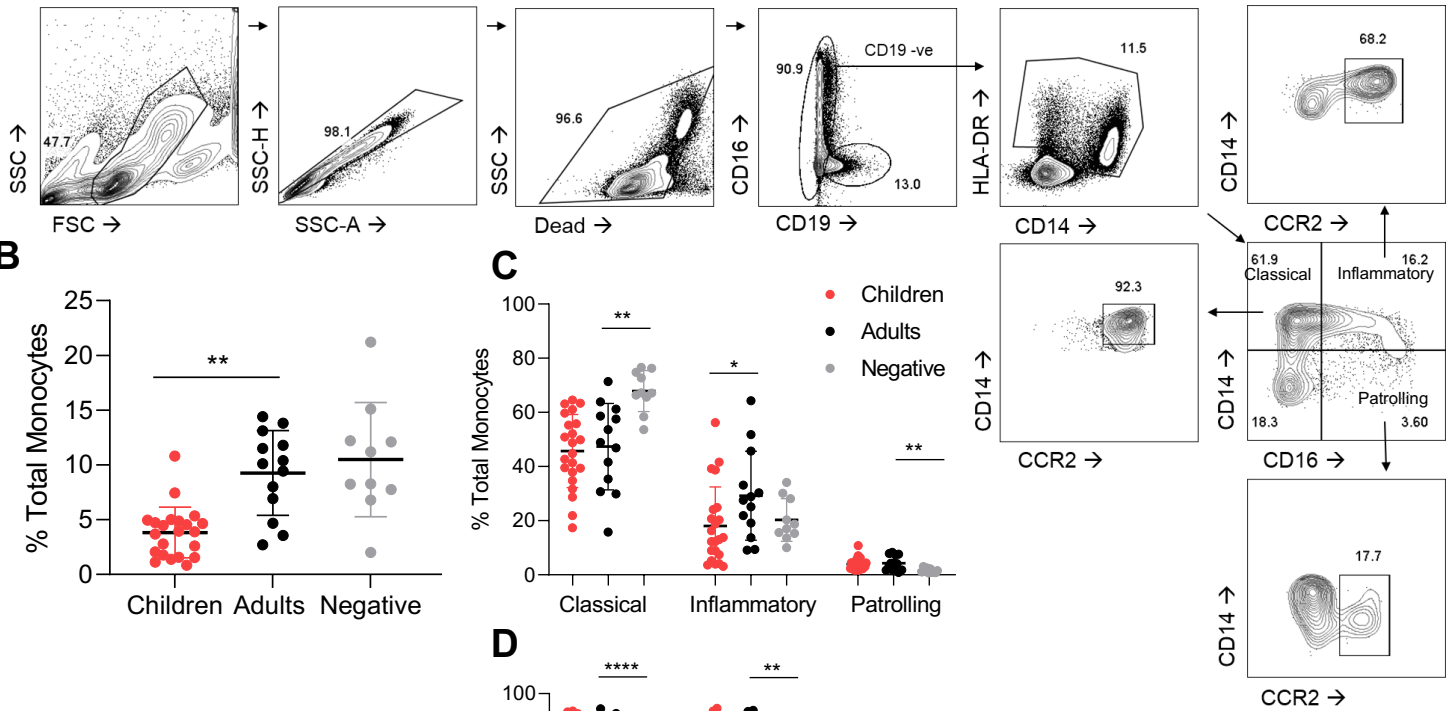
Supplementary Figure 2

Supplementary Figure 2 – Maximum CD4⁺ and CD8⁺ IFN γ T cell responses increase with age. CD4⁺ and CD8⁺ T cell responses for (A) background (by DMSO stimulation) and (B) maximum (by PMA/Ionomycin stimulation) in children (n=10) and adults (n=10) from convalescent/memory time points (mean \pm stdev: 56.9 \pm 29.7, range: 27-138 days post symptom onset), and uninfected adult controls (n=10). Comparisons by Mann Whitney test where **p<0.01, ***p<0.001, ****p<0.0001. Correlation of age with CD4⁺ (C) and CD8⁺ T cell responses by PMA/ionomycin stimulation. Spearman's test was used to calculate r values, and statistical significance is displayed as ***p<0.001. Blue lines of linear regression represent the overall trend with dotted lines showing 95% confidence intervals. Black dotted lines represent the limit of detection (IFN γ of CD4⁺=0.0095%, IFN γ of CD8⁺=0.00003%). (E) The structural peptide pool response for CD4⁺ and CD8⁺ T cells in adults and children (F) normalised to a paired maximum IFN γ production from (B) PMA/ionomycin stimulation. Correlation of IFN γ production against structural pool and PMA/Ionomycin in CD4⁺(G) and CD8⁺ T cells cells (H).

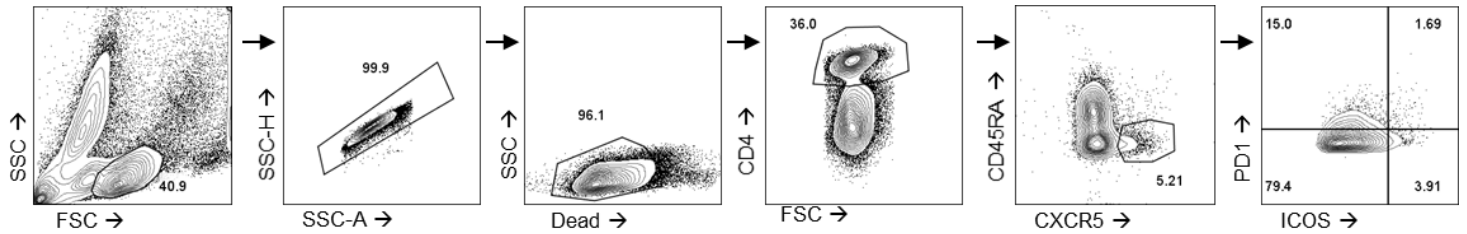


Supplementary Figure 3 - IFN γ CD4⁺ and CD8⁺ T cell responses are not different between symptomatic or asymptomatic SARS-CoV-2 infected children or adults. The SARS-CoV-2 CD4⁺ (A) or CD8⁺ (B) T cell responses of COVID-19 symptomatic children (n= 17, mean \pm stdev: 38.8 \pm 40.6 days), asymptomatic children (n= 17, 26.2 \pm 39.3 days), symptomatic adults (n= 22, 60.3 \pm 55.5 days), asymptomatic adults (n= 14, 32.8 \pm 32.3 days), from acute, convalescent and long-term memory time points (day 1 to 180 post symptom onset) and negative controls (n=10). Data represents the individual response with background subtracted, mean with upper and lower quartiles, minimum and maximum. Multiple comparisons were performed using Kruskal-Wallis test for between-group comparison. Pie charts of total IFN γ ⁺ CD4⁺ (C) and CD8⁺ (D) T cell SARS-CoV-2 responses with background subtracted and non-responders assigned a response of zero (from A, B).

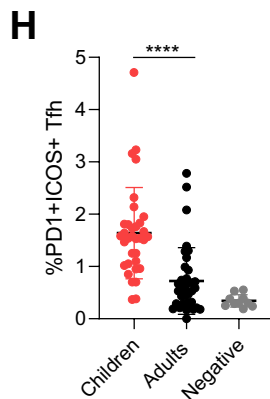
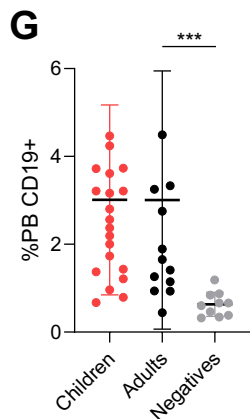
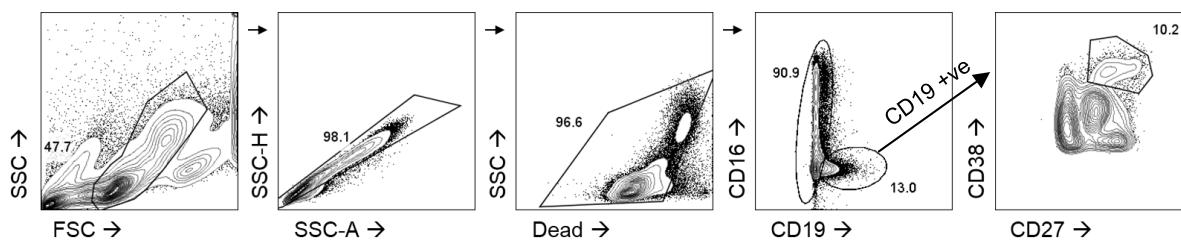
A Monocytes:



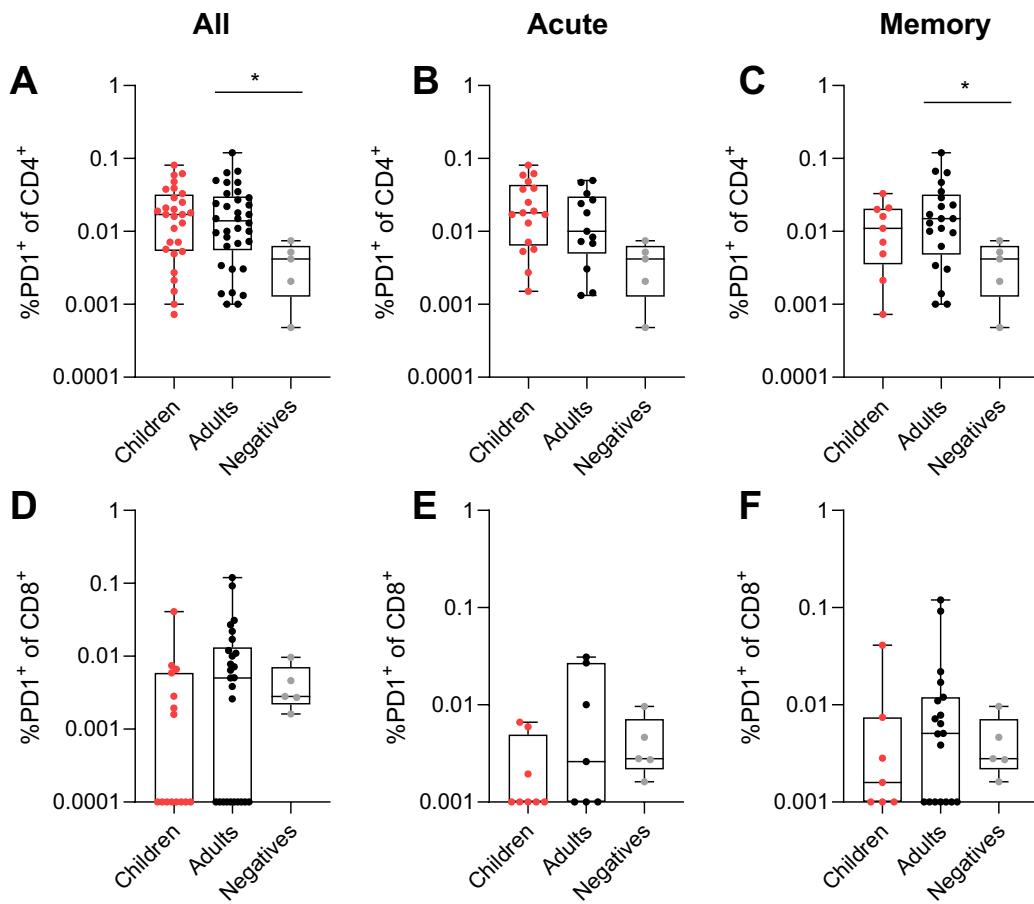
E T follicular helper cells:



F Plasmablasts:



Supplementary Figure 4 – Cellular recruitment during acute infection of children shows increased Tfh responses. (A) The gating strategy for characterisation of total, classical, inflammatory and patrolling monocytes and their activation levels (by CCR2). Early (<day 14) recruitment of innate and adaptive cells was measured by flow cytometry for COVID-19 children (n= 22), adults (n= 13) and negative controls (n=10). The total monocytes (B), monocyte phenotype (C), and activation of monocytes (D). The T follicular helper (E) and plasmablast (F) response was determined for activated Tfh (G), and total plasmablast (H). Data represents the individual response, mean±SD. Statistical differences were determined using Mann-Whitney test between children and adults, or adults and negatives where **p<0.01, ***p<0.001, ****p<0.0001.



Supplementary Figure 5 – T cell exhaustion is equivalent in adult and children CD4 and CD8 T cells. PD1⁺ IFN γ ⁺ CD4 (A-C) and CD8 (D-F) T cells in response to stimulation with structural pool at all time points (A, D) (day 1-180) in children (red), adults (black) and negative adults (grey) who are responders. Data separated into acute (B, E) (day < 14 post symptom onset) and convalescent/memory (C, F) (day 15-180 post infection) time points. Comparisons between infected children and adults, or infected adults and negative adults are carried out using Mann Whitney (unpaired) test where * $p < 0.05$.