

SUPPLEMENTAL INFORMATION

Figure S1

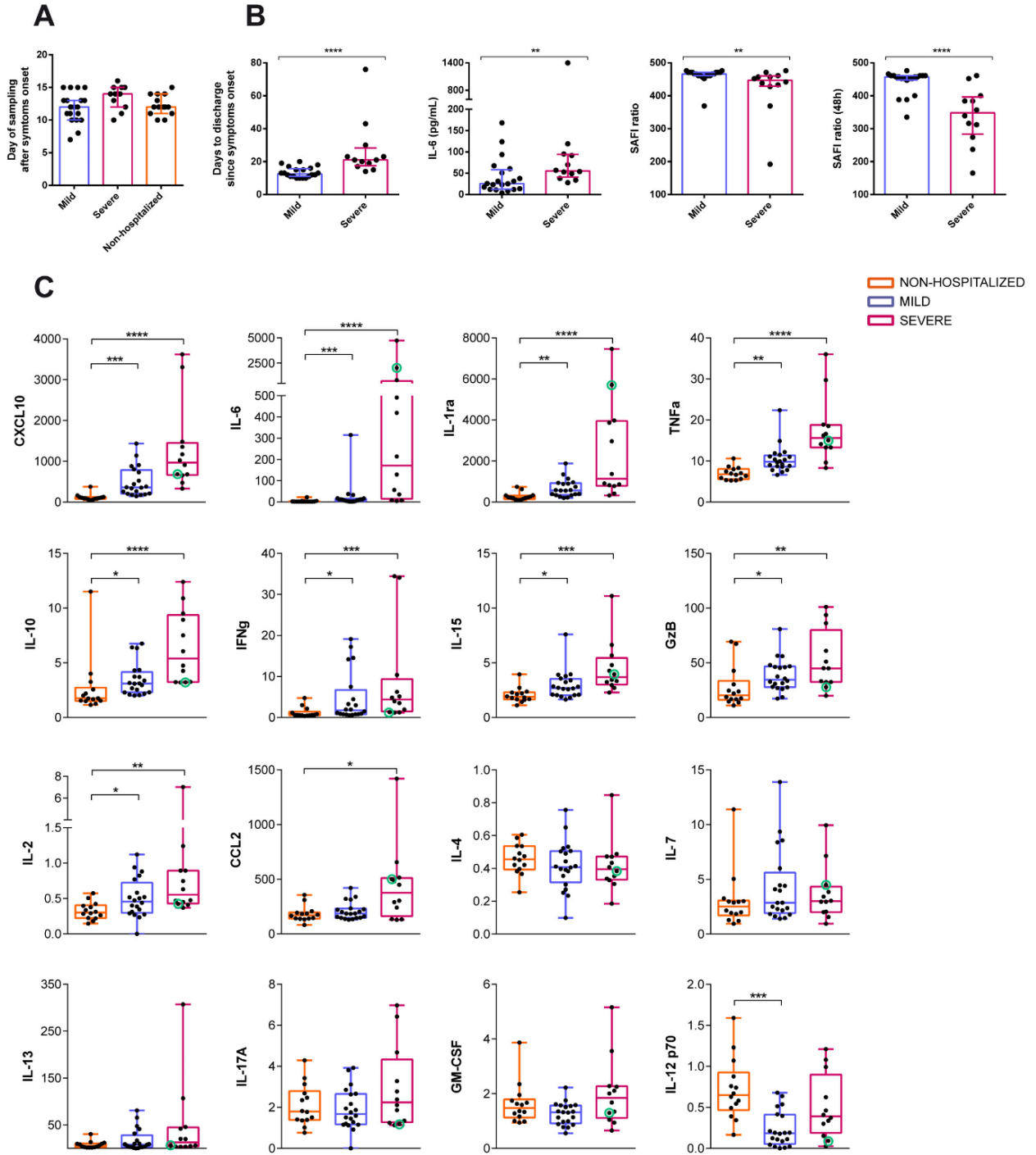
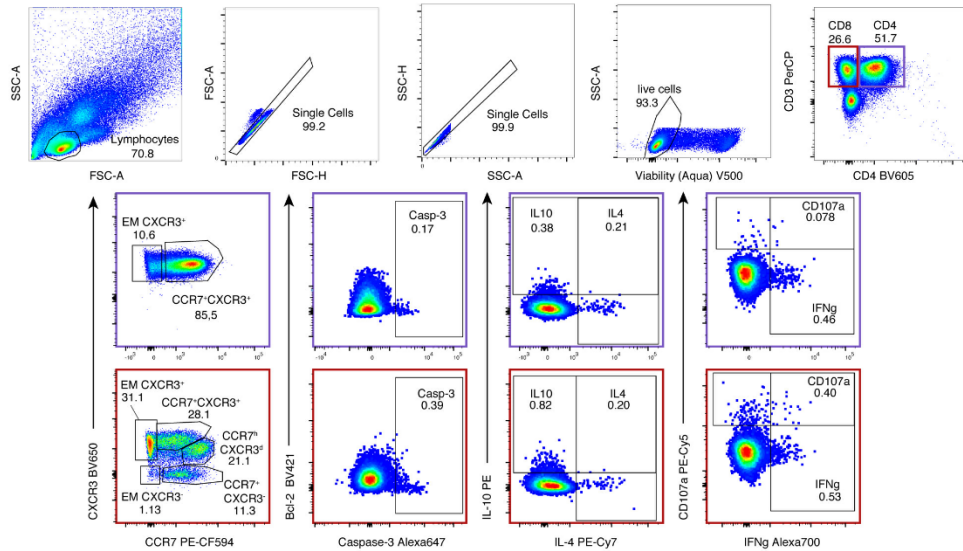


Figure S1. Clinical parameters and plasma cytokine levels during acute SARS-CoV-2 infection.

(A) Day of sample analyses by study groups (non-hospitalized n=14 in orange; mild n=20 in purple and severe n=12 in pink). Boxes and error bars represent median and interquartile range (IQR). **(B)** Pairwise comparison between mild and severe hospitalized patients for several clinical parameters: days to hospital discharge since symptoms onset, baseline IL-6 levels (pg/mL) and SAFI* ratio at baseline and after 48h. *SAFI ratio corresponds to the percentage of oxyhemoglobin saturation (SaO₂) in relation to the percentage of inspired oxygen (FiO₂). Statistical comparisons were performed using Mann-Whitney *U* tests. **(B)** Plasma levels of CXCL10, IL-6, IL-1ra, TNFa, IL-10, IFNg, IL-15, GzB, IL-2, CCL2, IL-4, IL-7, IL-13, IL-17A, GM-CSF and IL12p70 in non-hospitalized (n=14) mild (n=20) and severe (n=12) COVID-19 patients. Green circle in the severe group indicates the deceased patient. Data are shown as individual patients and median with min to max range. Statistical comparisons were performed using Kruskal-Wallis rank-sum test with Dunn's multiple comparison test. *p < 0.05, **p < 0.01, ***p < 0.001, ****p < 0.0001.

Figure S2

A



B

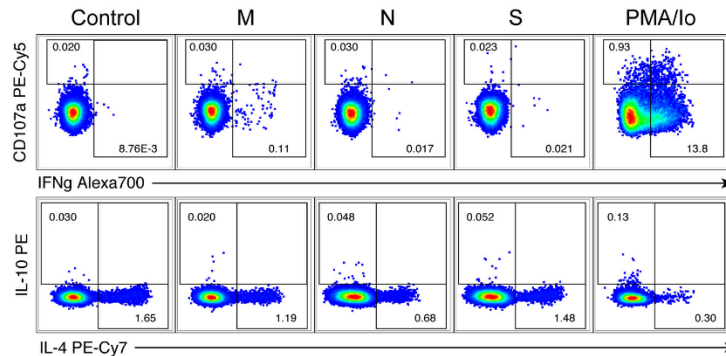


Figure S2. Gating strategy for the analyses of SARS-CoV-2-specific CD4⁺ and CD8⁺ T cells. (A) General gating strategy for functional analysis of SARS-CoV-2-specific CD4⁺ and CD8⁺ T cell populations. Gating strategy consisted of a lymphocyte gate based on FSC vs. SSC, followed by doublet and dead exclusion, live CD3⁺ T cell gate from where CD4⁺ (purple) and CD8⁺ T cells were gated. Out of these two T cell subsets (below), representative subsets based on their expression of CCR7 and CXCR3, the expression of caspase-3 and the expression of diverse functions among CD4⁺ (top) and CD8⁺ T cells (bottom) are shown. **(B)** Representative flow cytometry plots showing individual functions after stimulation with the negative control, viral proteins (membrane (M), nucleocapsid (N) and spike (S) proteins) and PMA/Ionomycin are shown for CD4⁺ T cells from a severe patient.

Figure S3

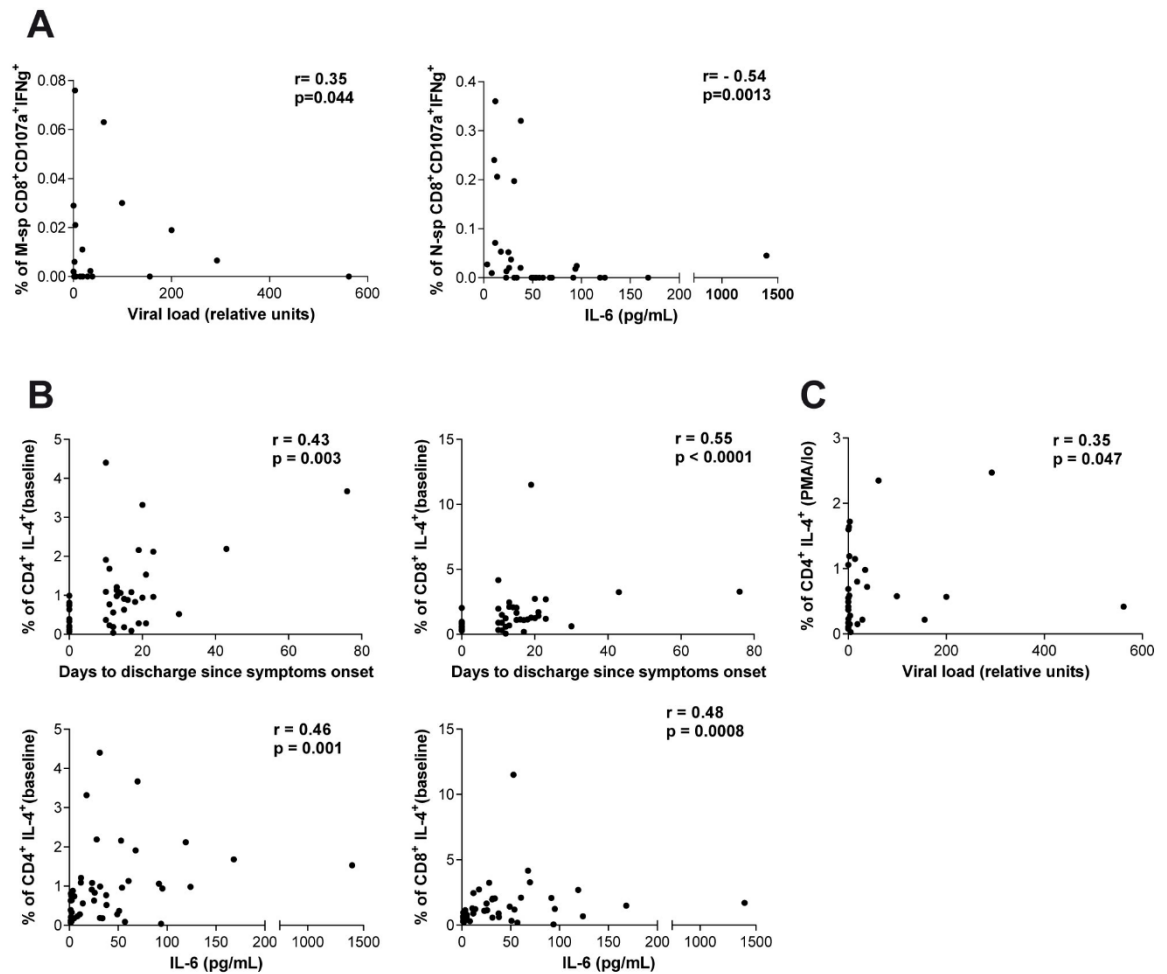


Figure S3. Correlations between SARS-CoV-2-specific T cells and clinical parameters. (A) Correlations between double CD107a⁺IFNγ⁺ CD8⁺T cells specific for the membrane (M) protein with viral load (left) and for the nucleocapsid (N) protein with IL-6 levels (right). Spearman rank correlation (n=33 for viral load and n=32 for IL-6). **(B)** Correlations between days to discharge since symptoms onset (top) or baseline IL-6 levels (bottom) and the frequency of CD4⁺ (left) and CD8⁺T cells(right) expressing IL-4 at baseline (unstimulated control). **(C)** Correlation between viral load and CD4⁺T cells expressing IL-4 after PMA/Ionomycin. Spearman rank correlation (n=33 for viral load and n=46 for days to discharge since symptoms onset and IL-6).

Figure S4

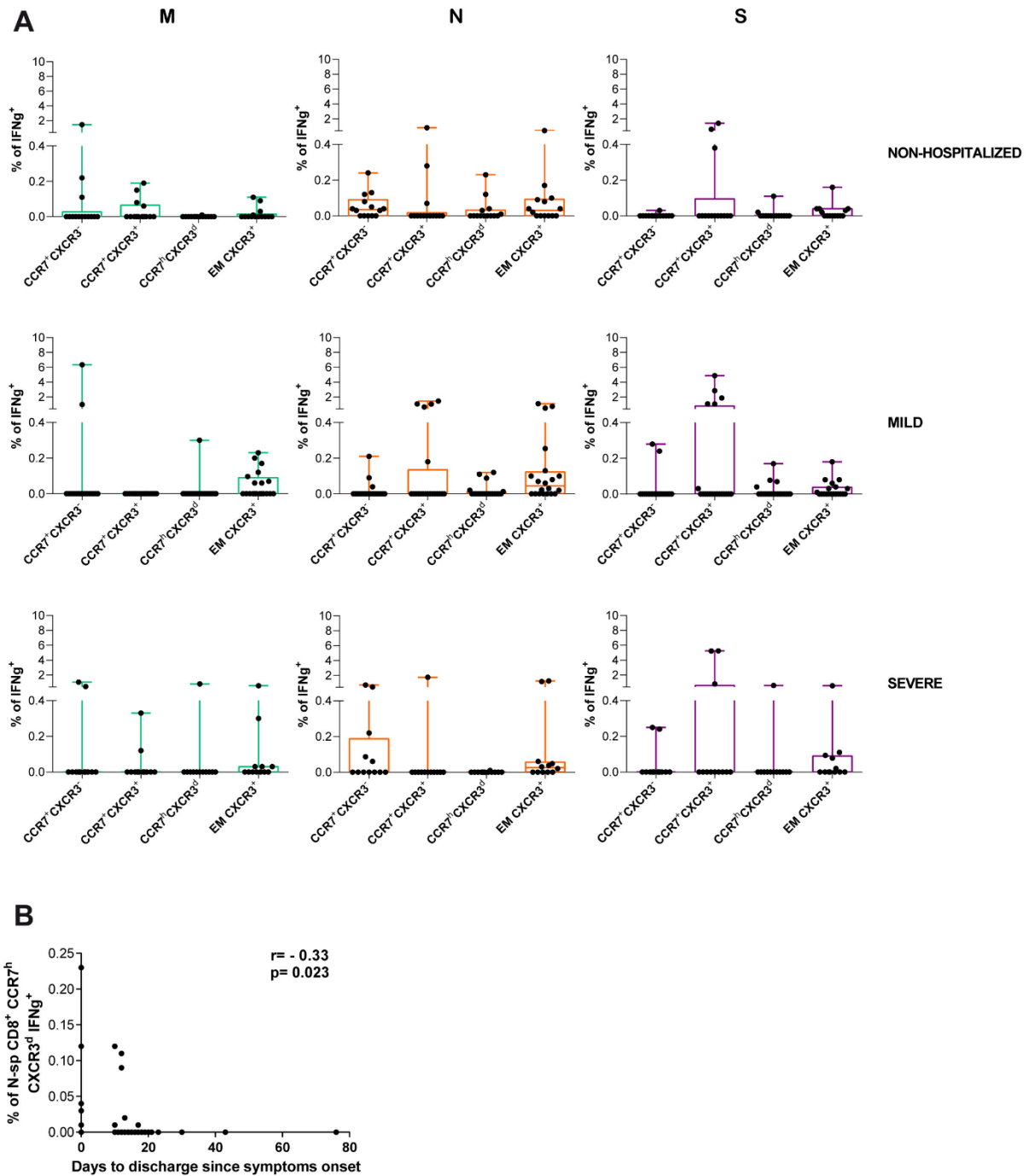


Figure S4. IFNg expression in SARS-CoV-2-specific CD8⁺ T cell subsets during acute infection. (A) Net frequency of IFNg expression in CCR7⁺CXCR3⁻, CCR7⁺CXCR3⁺, CCR7^hCXCR3^d and EM CXCR3⁺ subsets within CD8⁺ T cells after stimulation with any of the three viral proteins (membrane (M), nucleocapsid (N) and spike (S) proteins). Data are shown as median and upper range, where each dot

represents an individual patient for each group (non-hospitalized n=14; mild n=20 and severe n=12). Statistical comparisons were performed using Kruskal-Wallis rank-sum test with Dunn's multiple comparison test. **(B)** Correlation between days to hospital discharge since symptoms onset and nucleocapsid-specific CD8⁺ CCR7^hCXCR3^d IFN γ ⁺ T cells. Spearman rank correlation (n=46).

Figure S5

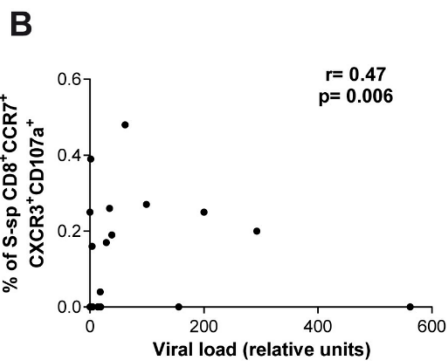
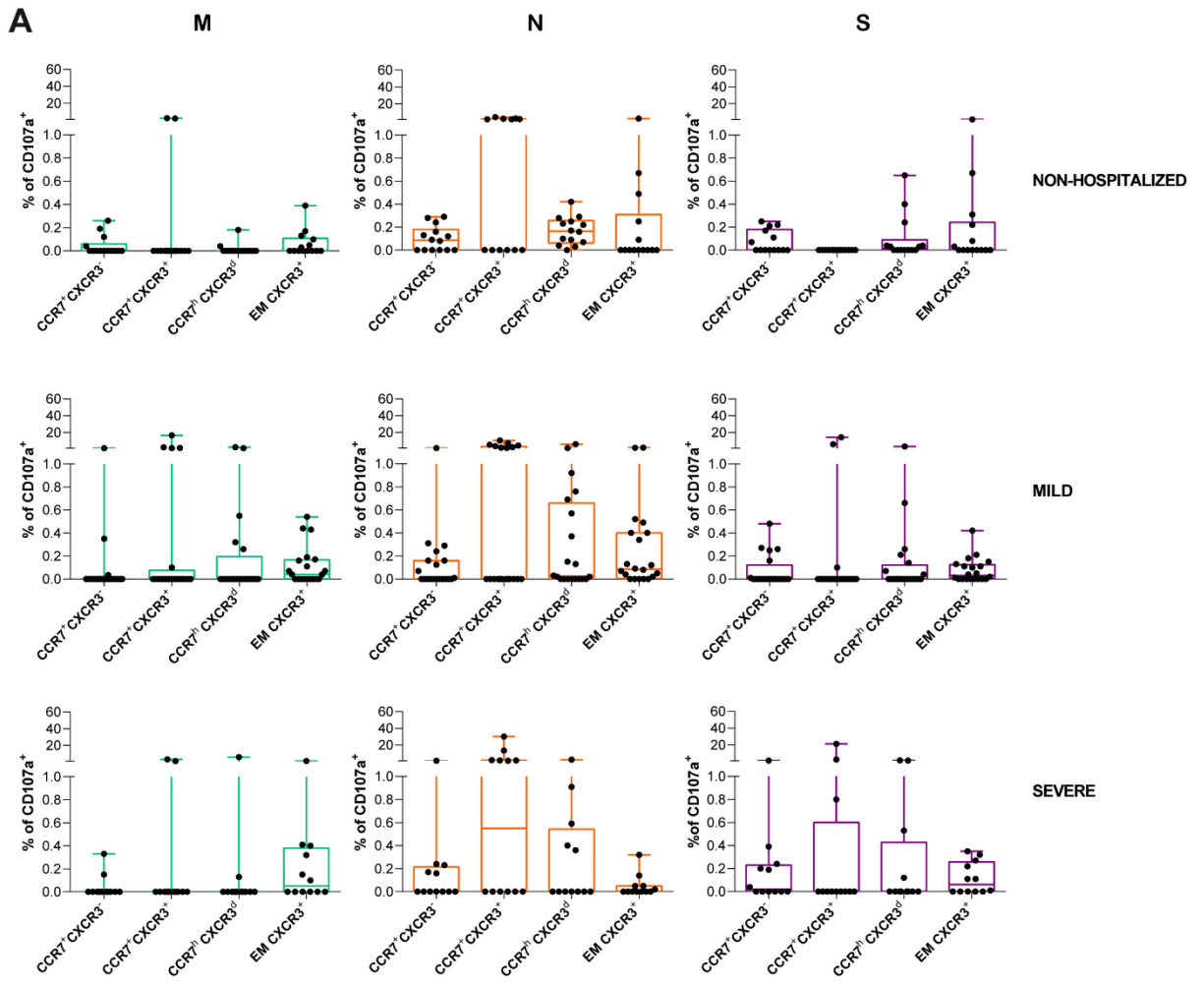


Figure S5. CD107a expression in SARS-CoV-2-specific CD8⁺ T cell subsets during acute infection. **(A)** Net frequency of CD107a expression in CCR7⁺CXCR3⁻, CCR7⁺CXCR3⁺, CCR7^h CXCR3^d and EM CXCR3⁺ subsets within CD8⁺ T cells after stimulation with any of the three viral proteins (membrane (M), nucleocapsid (N) and spike (S) proteins). Data are shown as median and upper range, where each dot represents an individual patient for each group (non-hospitalized n=14; mild n=20 and severe n=12). Statistical comparisons were performed using Kruskal-Wallis rank-sum test with Dunn's multiple comparison test. **(B)** Correlation between viral load and the frequency of spike-specific CD8⁺ CCR7⁺CXCR3⁺ CD107a⁺ T cells. Spearman rank correlation (n=33).

Figure S6

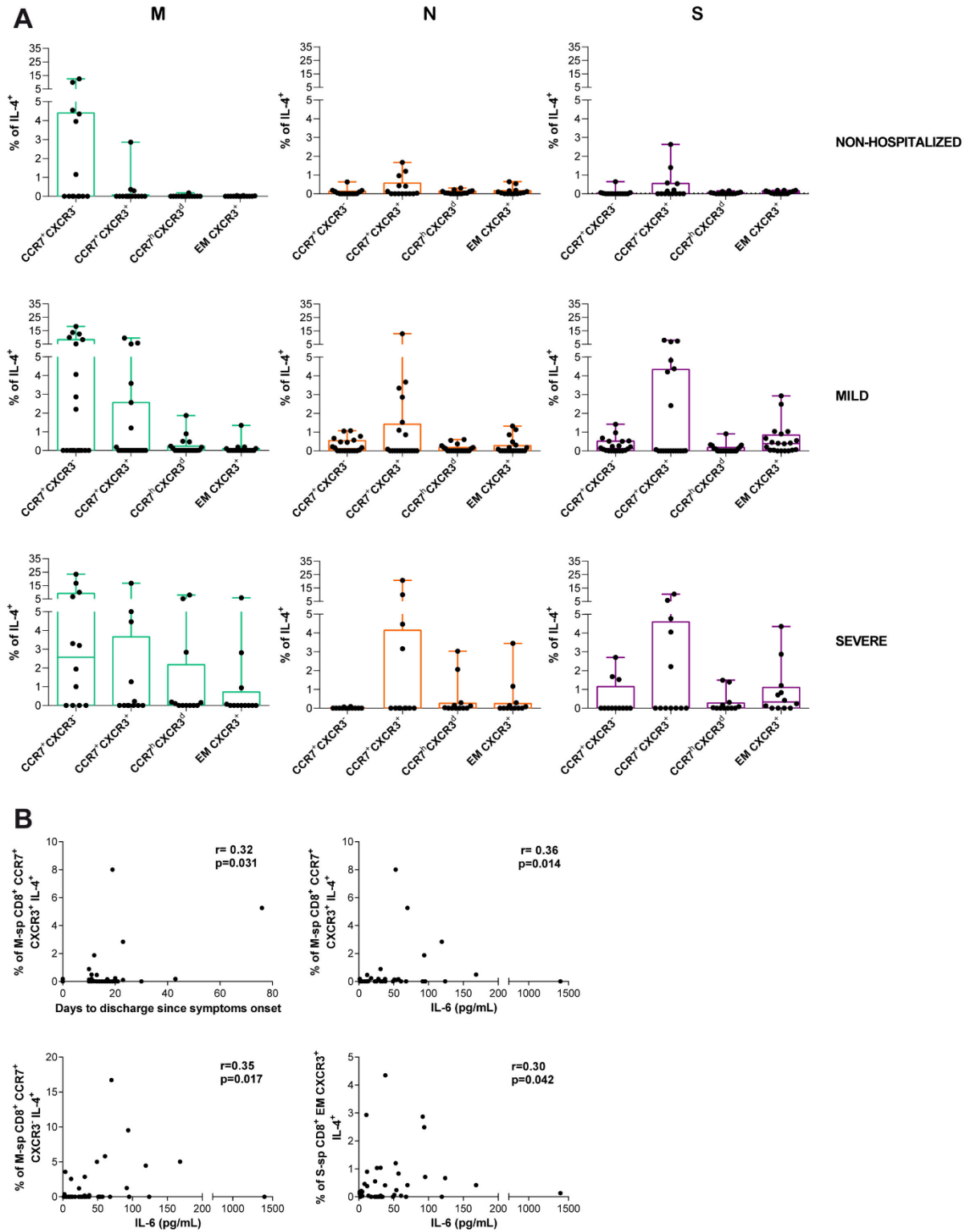
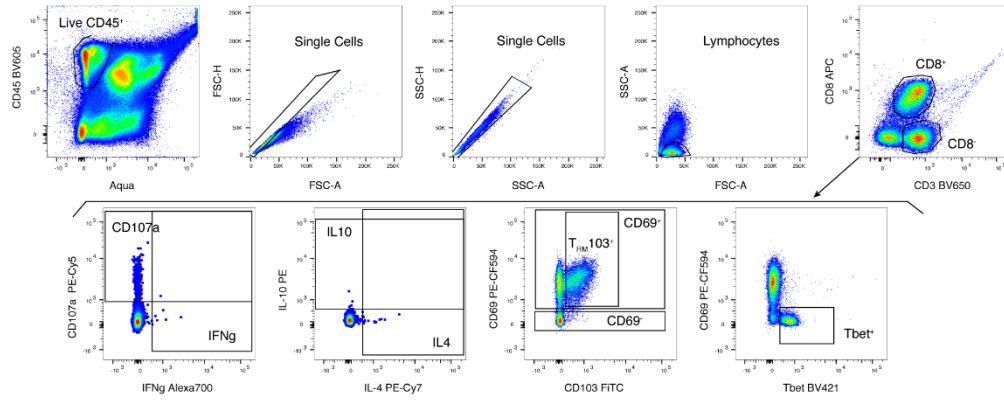


Figure S6. IL-4 expression in SARS-CoV-2-specific CD8⁺ T cell subsets during acute infection.

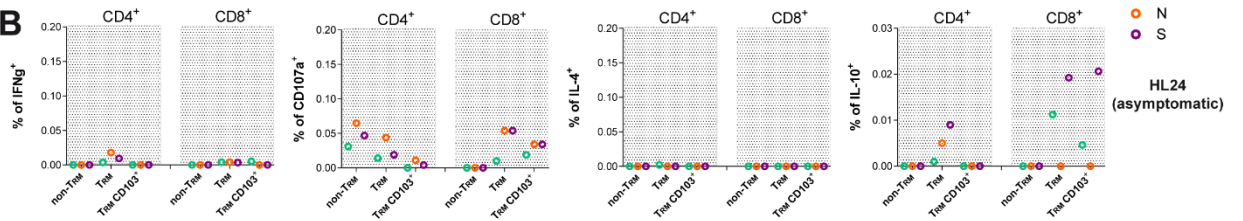
(A) Net frequency of IL-4 expression in CCR7⁺CXCR3⁻, CCR7⁺CXCR3⁺, CCR7^hCXCR3^d and EM CXCR3⁺ subsets within CD8⁺ T cells after stimulation with any of the three viral proteins (membrane (M), nucleocapsid (N) and spike (S) proteins). Data are shown as median and upper range, where each dot represents an individual patient for each group (non-hospitalized n=14; mild n=20 and severe n=12). Statistical comparisons were performed using Kruskal-Wallis rank-sum test with Dunn's multiple comparison test. **(B)** Correlations between days to hospital discharge since symptoms onset or baseline IL-6 levels and the frequency of membrane or spike-specific CCR7/CXCR3 subsets of CD8⁺ IL-4⁺ T cells. Spearman rank correlation (n=46).

Figure S7

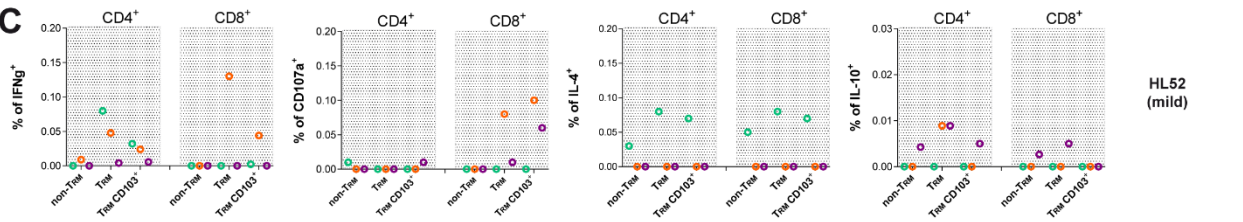
A



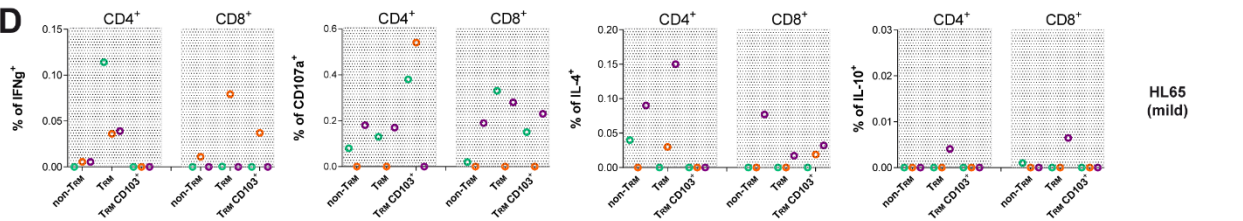
B



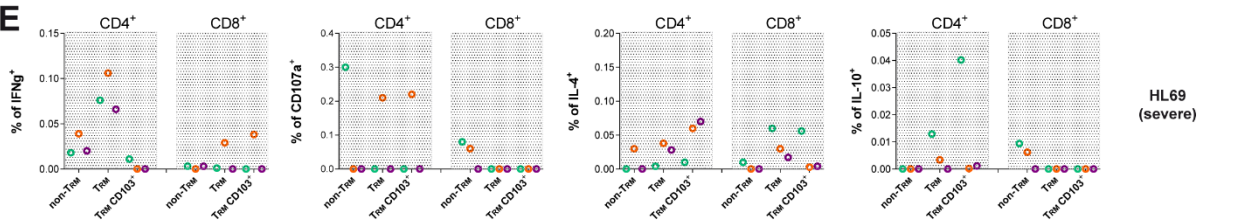
C



D



E



F

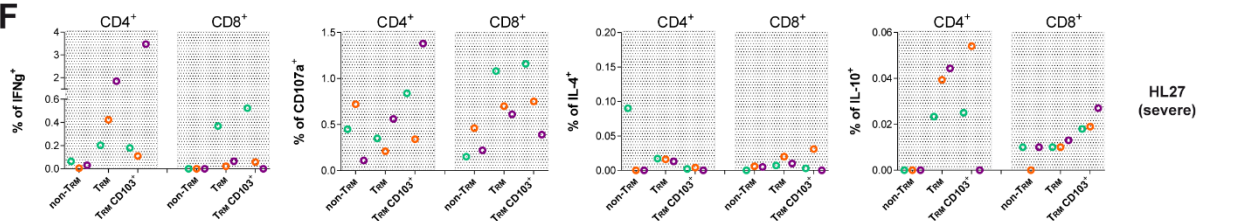


Figure S7. Functional analysis of lung-resident SARS-CoV-2-specific T cells.

(A) Representative flow cytometry plots for phenotypic analysis of lung-derived SARS-CoV-2-specific CD4⁺ and CD8⁺ T cells from patient HL27. Gating strategy consisted on a live CD45⁺ gate, followed by doublet exclusion, a lymphocyte gate based on FSC vs. SSC and then a T cell gate based on CD3⁺ CD8⁺ or CD8⁻ (putative CD4⁺); from there we identified different functions (IFN γ , CD107a, IL-4, IL-10) and resident phenotypes. Phenotype was based on the expression of CD69, CD103 and T-bet, where tissue-resident memory T cells (T_{RM}) were CD69⁺, with a fraction of them expressing CD103, and non-T_{RM} were CD69⁻. As shown, T-bet was associated to the non-T_{RM} fraction. **(B-F)** Net frequencies of IFN γ , CD107a, IL-4 and IL-10 expression in SARS-CoV-2-specific CD4⁺ or CD8⁺ non-T_{RM}, T_{RM} and T_{RM} CD103⁺ from patient **(B)** (HL24), **(C)** (HL52), **(D)** (HL65), **(E)** (HL69) and **(F)** (HL27). Viral proteins are shown in color green (membrane protein, M), orange (nucleocapsid protein, N) and purple (spike protein, S).

Table S1. Patient characteristics at baseline.

	Non-hospitalized n=14	Mild n=20	Severe n=12	<i>P-value</i> <i>between groups</i>
Age (years), range ^a	25-42	38-64	51-69	<0.0001
Females, n (%) ^b	10 (71.4)	11 (55)	4 (33.3)	0.556
Fever, n (% yes) ^b	9 (64.2.3)	17 (85)	8 (66.6)	0.844
Dyspnea, n (% yes) ^b	2 (14.2)	15 (75)	7 (58.3)	0.101
SAFI, median [IQR] ^a	475 [475-475]	466.0 [461-471]	447 [429.3-460]	<0.0001
SAFI 48h, median [IQR] ^a	475 [475-475]	454.5 [448.3-461]	342.5.0 [283.5-396]	<0.0001
Days from symptoms to discharge, median	0 [0-0]	12.5 [11-15.7]	21 [17.5-28.2]	<0.0001
Charlson Comorbidity Index, median [IQR]	0 [0-0]	1 [0-2]	2 [1.2-2]	0.0002
Immunology and Virology				
Leucocytes (10 ⁹ /L), median [IQR] ^a	6.1 [5.4-7.3]	5.7 [4.6-7.3]	7.2 [4.9-9.3]	0.462
Lymphocytes (%), median [IQR] ^a	33.5 [29.3-42.3]	21.7 [15-25.5]	15 [11.2-19.2]	<0.0001
Monocytes (%), median [IQR] ^a	7 [6.5-8.2]	8.2 [6.6-9.9]	5.7 [2.9-9.5]	0.243
Neutrophils (%), median [IQR] ^a	55.4 [49.2-61]	69.75 [61.88-	77.4 [64.6-79.75]	0.0006
Eosinophils (%), median [IQR] ^a	2.6 [1.3-5.1]	0.2 [0-0.7]	0 [0-0.07]	<0.0001
Platelets (10 ⁹ /L), median [IQR] ^a	291 [254.3-310.3]	185.5 [158.3-297]	191 [113.3-292.3]	0.073
Viral load (relative to housekeeping), median	0.2 [0.1-4.9]	3.5 [0.2-71.3]	3.32 [0.8-165.6]	0.215
Biochemistry				
D-dimer, (ng/ml), median [IQR] ^a	94 [54.7-122]	181 [130-401]	339 [247-965]	0.0003
Ferritin, (ng/ml), median [IQR] ^a	147 [30-202.0]	336 [164.8-537.8]	550.5 [309-1416]	0.0002
IL-6, (pg/ml), median [IQR] ^a	1.7 [1.5-3]	25.6 [12.3-28.2]	55.3 [40.7-94.24]	<0.0001

Statistical comparisons between groups (non-hospitalized, mild and severe) were performed using ^aKruskal-Wallis rank-sum test with Dunn's multiple comparison test and/or ^bChi-square test.

Table S2. Spearman's correlation test between clinical parameters and the net frequency of SARS-CoV-2-specific CD4⁺ and CD8⁺ T cells by function.

	Days to hospital discharge since symptoms onset (n=46)	IL-6 (pg/ml) (n=46)	SAFI ratio (48h) (n=46)
CD4⁺ T cells			
M peptides			
IFN-γ	<i>p</i> = 0.003 <i>r</i> = 0.42	<i>p</i> = 0.0009 <i>r</i> = 0.47	<i>p</i> = < 0.0001 <i>r</i> = -0.5761
CD107a	<i>p</i> = 0.107 (NS) <i>r</i> = 0.24	<i>p</i> = 0.505 (NS) <i>r</i> = 0.10	<i>p</i> = 0.0335 <i>r</i> = -0.3142
IL-4	<i>p</i> = 0.718 (NS) <i>r</i> = 0.05	<i>p</i> = 0.970 (NS) <i>r</i> = -0.005	<i>p</i> = 0.9834 (NS) <i>r</i> = -0.003158
IL-10	<i>p</i> = 0.028 <i>r</i> = -0.32	<i>p</i> = 0.035 <i>r</i> = -0.31	<i>p</i> = 0.0224 <i>r</i> = 0.336
N peptides			
IFN-γ	<i>p</i> = 0.027 <i>r</i> = 0.32	<i>p</i> = 0.099 <i>r</i> = 0.24	<i>p</i> = 0.0015 <i>r</i> = -0.4558
CD107a	<i>p</i> = 0.929 (NS) <i>r</i> = 0.013	<i>p</i> = 0.252 (NS) <i>r</i> = 0.17	<i>p</i> = 0.0841 (NS) <i>r</i> = -0.2575
IL-4	<i>p</i> = 0.627 (NS) <i>r</i> = -0.07	<i>p</i> = 0.595 (NS) <i>r</i> = -0.08	<i>p</i> = 0.8662 (NS) <i>r</i> = 0.02554
IL-10	<i>p</i> = 0.122 (NS) <i>r</i> = -0.23	<i>p</i> = 0.144 (NS) <i>r</i> = -0.21	<i>p</i> = 0.0222 <i>r</i> = 0.3366
S peptides			
IFN-γ	<i>p</i> = 0.002 <i>r</i> = 0.43	<i>p</i> = 0.007 <i>r</i> = 0.39	<i>p</i> = < 0.0001 <i>r</i> = -0.5585
CD107a	<i>p</i> = 0.193 (NS) <i>r</i> = 0.19	<i>p</i> = 0.075 (NS) <i>r</i> = 0.26	<i>p</i> = 0.0025 <i>r</i> = -0.4356
IL-4	<i>p</i> = 0.273 (NS) <i>r</i> = 0.16	<i>p</i> = 0.391 (NS) <i>r</i> = 0.12	<i>p</i> = 0.2026 (NS) <i>r</i> = -0.1914
IL-10	<i>p</i> = 0.760 (NS) <i>r</i> = 0.04	<i>p</i> = 0.647 (NS) <i>r</i> = 0.07	<i>p</i> = 0.7723 (NS) <i>r</i> = 0.04385
All peptides			
IFN-γ	<i>p</i> = 0.002 <i>r</i> = 0.44	<i>p</i> = 0.001 <i>r</i> = 0.45	<i>p</i> = < 0.0001 <i>r</i> = -0.6165
CD107a	<i>p</i> = 0.158 (NS) <i>r</i> = 0.21	<i>p</i> = 0.024 <i>r</i> = 0.33	<i>p</i> = 0.0002 <i>r</i> = -0.5168
IL-4	<i>p</i> = 0.424 (NS) <i>r</i> = 0.12	<i>p</i> = 0.444 (NS) <i>r</i> = 0.11	<i>p</i> = 0.3377 (NS) <i>r</i> = -0.1446
IL-10	<i>p</i> = 0.057 (NS) <i>r</i> = -0.28	<i>p</i> = 0.133 (NS) <i>r</i> = -0.22	<i>p</i> = 0.0173 <i>r</i> = 0.3494
CD8⁺ T cells			
M peptides			
IFN-γ	<i>p</i> = 0.414 (NS) <i>r</i> = 0.12	<i>p</i> = 0.182 (NS) <i>r</i> = 0.20	<i>p</i> = 0.4156 (NS) <i>r</i> = -0.123
CD107a	<i>p</i> = 0.109 (NS) <i>r</i> = 0.23	<i>p</i> = 0.003 <i>r</i> = 0.41	<i>p</i> = 0.1126 (NS) <i>r</i> = -0.2371
IL-4	<i>p</i> = 0.037 <i>r</i> = 0.30	<i>p</i> = 0.050 (NS) <i>r</i> = 0.29	<i>p</i> = 0.0485 <i>r</i> = -0.2925
IL-10	<i>p</i> = 0.612 (NS) <i>r</i> = -0.07	<i>p</i> = 0.429 (NS) <i>r</i> = 0.11	<i>p</i> = 0.5744 (NS) <i>r</i> = 0.08499
N peptides			
IFN-γ	<i>p</i> = 0.278 (NS) <i>r</i> = 0.16	<i>p</i> = 0.252 (NS) <i>r</i> = -0.17	<i>p</i> = 0.9502 (NS) <i>r</i> = 0.009477
CD107a	<i>p</i> = 0.254 (NS) <i>r</i> = -0.17	<i>p</i> = 0.226 (NS) <i>r</i> = -0.18	<i>p</i> = 0.0811 (NS) <i>r</i> = 0.2599
IL-4	<i>p</i> = 0.761 (NS) <i>r</i> = 0.04	<i>p</i> = 0.800 (NS) <i>r</i> = -0.03	<i>p</i> = 0.5156 (NS) <i>r</i> = -0.09832
IL-10	<i>p</i> = 0.431 (NS) <i>r</i> = -0.11	<i>p</i> = 0.273 (NS) <i>r</i> = -0.16	<i>p</i> = 0.4244 (NS) <i>r</i> = 0.1207

S peptides

IFN- γ	$p= 0.077$ (NS) $r= 0.26$	$p= 0.079$ (NS) $r= 0.26$	$p= 0.1173$ (NS) $r= -0.2342$
CD107a	$p= 0.393$ (NS) $r= 0.12$	$p= 0.927$ (NS) $r= 0.01$	$p= 0.5507$ (NS) $r= 0.09029$
IL-4	$p= 0.0006$ $r= 0.48$	$p= 0.0002$ $r= 0.51$	$p= < 0.0001$ $r= -0.5793$
IL-10	$p= 0.552$ (NS) $r= 0.09$	$p= 0.407$ (NS) $r= 0.12$	$p= 0.6569$ (NS) $r= -0.06726$

All peptides

IFN- γ	$p= 0.015$ $r= 0.35$	$p= 0.535$ (NS) $r= 0.09$	$p= 0.0762$ (NS) $r= -0.2641$
CD107a	$p= 0.816$ (NS) $r= -0.03$	$p= 0.945$ (NS) $r= 0.01$	$p= 0.2961$ (NS) $r= 0.1574$
IL-4	$p= 0.061$ (NS) $r= 0.27$	$p= 0.042$ $r= 0.29$	$p= 0.0158$ $r= -0.3538$
IL-10	$p= 0.394$ (NS) $r= -0.12$	$p= 0.974$ (NS) $r= 0.004$	$p= 0.3317$ (NS) $r= 0.1464$

^aSAFI ratio corresponds to the percentage of oxyhemoglobin saturation (SaO₂) in relation to the percentage of inspired oxygen (FiO₂) after 48h of hospitalization.