

1                   **Current and emerging polymyxin resistance diagnostics: a systematic review of**  
2   **established and novel detection methods**

3           Tumisho Mmatumelo Seipei Leshaba<sup>a</sup>, Nontombi Marylucy Mbelle<sup>a</sup>, John Osei Sekyere<sup>a#</sup>

4           <sup>a</sup>Department of Medical Microbiology, School of Medicine, Faculty of Health Sciences, University of Pretoria,  
5           South Africa.

6  
7           **#Address correspondence to** Dr. John Osei Sekyere, [jod14139@yahoo.com](mailto:jod14139@yahoo.com);  
8           [u18392467@tuks.co.za](mailto:u18392467@tuks.co.za)

9  
10           **Running head:** Polymyxin E resistance, current detection methods.

11  
12           **Tweet:** “Colistin resistance is a global threat to bacterial infections’ management. Being a last-  
13           resort antibiotic for treating of MDR Gram-negative infections, it is important to establish an efficient  
14           diagnostic method for routine use in clinical microbiology laboratories. Herein, current & emerging  
15           diagnostics for detecting colistin resistance are described to inform clinical diagnostic options.”

16  
17           **Author summary/highlights/importance**

- 18           • Polymyxin resistance is rapidly increasing, threatening public and veterinary  
19           healthcare.
- 20           • As one of the last-line antibiotics, polymyxin must be conserved by containing the  
21           spread of polymyxin resistance.
- 22           • Detecting colistin resistance relies on determining colistin MIC values by standard  
23           broth microdilution, which is labour-intensive with longer turnaround time (TAT).
- 24           • Other polymyxin resistance diagnostics have been developed to augment or replace  
25           the broth microdilution with faster TAT.
- 26           • Based on their respective sensitivities, specificities, TAT, skill, and cost, selected  
27           phenotypic and molecular assays are recommended for laboratories, according to their  
28           financial strengths, to enhance colistin resistance surveillance and control.

31

## 32 **Abstract**

33 **Background.** The emergence of polymyxin resistance, due to transferable *mcr*-genes,  
34 threatens public and animal health as there are limited therapeutic options. As polymyxin is  
35 one of the last-line antibiotics, there is a need to contain the spread of its resistance to  
36 conserve its efficacy. Herein, we describe current and emerging polymyxin resistance  
37 diagnostics to inform faster clinical diagnostic choices.

38 **Methods.** A literature search in diverse databases for studies published between 2016 and  
39 2020 was performed. English articles evaluating colistin resistance methods/diagnostics were  
40 included.

41 **Results.** Screening resulted in the inclusion of 93 journal articles. Current colistin resistance  
42 diagnostics are either phenotypic or molecular. Broth microdilution (BMD) is currently the  
43 only gold standard for determining colistin MICs (minimum inhibitory concentration).

44 Phenotypic methods comprise of agar-based methods such as CHROMagar™ Col-APSE,  
45 SuperPolymyxin, ChromID® Colistin R, LBJMR, and LB medium; manual MIC-determiners  
46 viz., UMIC, MICRONAUT MIC-Strip (MMS), and ComASP Colistin; automated  
47 antimicrobial susceptibility testing (AST) systems such as BD Phoenix, MICRONAUT-S,  
48 MicroScan, Sensititre and Vitek 2; MCR-detectors such as lateral flow immunoassay (LFI)  
49 and chelator-based assays including EDTA- and DPA-based tests *i.e.* combined disk test  
50 (CDT), modified colistin broth-disk elution (CBDE), Colispot, and Colistin MAC test as  
51 well as biochemical colorimetric tests *i.e.* Rapid Polymyxin NP test and Rapid  
52 ResaPolymyxin NP test. Molecular methods only characterize mobile colistin resistance; they  
53 include PCR, LAMP, and whole-genome sequencing (WGS).

54 **Conclusion.** Due to the faster turnaround time ( $\leq 3$ h), improved sensitivity (84-100%), and  
55 specificity (93.3-100%) of the Rapid ResaPolymyxin NP test, we recommend this test for  
56 initial screening of colistin-resistant isolates. This can be followed by CBDE with EDTA or  
57 the LFI as they both have 100% sensitivity and a specificity of  $\geq 94.3\%$  for the rapid  
58 screening of *mcr*-genes. However, molecular assays such as LAMP and PCR may be  
59 considered in well-equipped clinical laboratories.

60 **Keywords:** Colistin resistance; detection methods; *mcr*; diagnostics; Polymyxins

## 61 **1. Introduction**

62 The rapid dissemination of multidrug-resistant (MDR) *Acinetobacter spp.*, *Pseudomonas spp.*  
63 and carbapenemase-producing *Enterobacterales* (CPE) has been of vital significance to public  
64 and veterinary health <sup>1,2</sup>. Of particular concern are carbapenem-resistant infections caused by  
65 these organisms <sup>3</sup>, as they are associated with high mortality rates owing to limited  
66 therapeutic options <sup>4,5</sup>. The limited pipeline of new antibiotic classes has led to increased use  
67 of polymyxin E (colistin) alone or in combination with tigecycline or fosfomycin for the  
68 treatment of MDR Gram-negative infections <sup>6,7</sup>.

69 Polymyxin (colistin) is of particular value as a last-line antibiotic for treating MDR and  
70 carbapenem-resistant Gram-negative infections as it is bactericidal unlike tigecycline, which  
71 is bacteriostatic and is not readily available in many countries <sup>8</sup>. Polymyxin consists of  
72 hydrophilic and lipophilic moieties that allow it to have stable polar and hydrophobic  
73 interactions with the lipopolysaccharide (LPS) membrane of Gram-negative bacteria <sup>9, 10</sup>.  
74 These interactions result in the destruction of the LPS membrane, causing the cytoplasmic  
75 content to leak out, ultimately killing the cell <sup>10</sup>. There are two types of polymyxins, B and E,  
76 but this review shall focus on polymyxin E, also known as colistin.

77 Increased use of polymyxin to treat MDR Gram-negative infections has led to the emergence  
78 of acquired colistin resistance <sup>11</sup>. Several mechanisms that mediate acquired colistin resistance  
79 have been identified, the most common being chromosomal mutations and plasmid-borne  
80 colistin resistance <sup>10, 12, 13</sup>. Chromosomal mutations result in modification(s) of the LPS  
81 membrane using different mechanisms: (i) the addition of 4-amino-4-deoxy-L-arabinose (L-  
82 Ara-4N), phosphoethanolamine (pETN) or galactosamine moieties at the 4' or 1' position of  
83 lipid A, which reduces the overall anionic charge of the LPS; (ii) overexpression of efflux  
84 pumps systems; (iii) overproduction of capsule polysaccharide that reduces the LPS  
85 membrane's permeability <sup>8, 12</sup>.

86 Plasmid-borne colistin resistance involves the acquisition of a mobile colistin resistance (*mcr*)  
87 gene that encodes a pETN transferase <sup>7</sup>. Since the discovery of the first plasmid-borne *mcr-1*  
88 gene in *Escherichia coli* in China, other *mcr* variants viz., *mcr-2*, *mcr-3*, *mcr-4*, *mcr-5*, *mcr-6*,  
89 *mcr-7*, *mcr-8*, *mcr-9*, and *mcr-10*, have been described worldwide <sup>6, 14-21</sup>. Currently, the  
90 confirmation of polymyxin E resistance relies on the broth microdilution (BMD) <sup>22</sup>. Although  
91 BMD is the gold standard for colistin susceptibility testing, it is not suitable for routine  
92 clinical use as it is time-consuming and associated with methodological issues <sup>23</sup>.  
93 Transmissible colistin resistance makes it imperative to establish rapid and reliable methods  
94 that will efficiently detect colistin resistance <sup>6</sup>. As *mcr*-containing plasmids are capable of

95 transfer between epidemic strains of *Enterobacterales*, rapid detection of colistin resistance  
96 could manage the dissemination of colistin resistance in human and animal populations<sup>6, 23</sup>.

97 There has been an increasing interest in discovering alternative methods of detecting  
98 resistance to colistin arising from both chromosomal mutations and plasmid-borne *mcr* genes  
99<sup>1, 24</sup>. These methods can be categorized as either phenotypic or molecular methods<sup>12, 23</sup>. This  
100 review aims to summarize and analyse clinical diagnostic methods that are currently available  
101 for detecting colistin resistance.

### 102 ***Evidence before this review***

103 Methods used to detect polymyxin resistance have been reviewed<sup>1, 12, 23</sup>. Bardet and Rolain  
104 (2018) narratively described methods used to detect colistin resistance, focusing mainly on  
105 their efficiency to detect all mechanisms of colistin resistance. They also analysed methods  
106 specifically used to detect plasmid-mediated colistin resistance. Osei Sekyere (2019) provided  
107 a comprehensive description of polymyxin resistance and *mcr*-detecting diagnostic methods  
108 up to 2018. The review included the composition of culture media, primers, and cycling  
109 conditions of PCR methods. Osei Sekyere (2019) summarized the sensitivities, specificities,  
110 turnaround time (TAT), skill, relative cost, essential agreement (EA), categorical agreement  
111 (CA), major error (ME) and very major error (VME) of polymyxin-resistance detection  
112 methods. Since 2018, new evaluation studies have been reported, broadening our  
113 understanding and conclusions of the best colistin resistance diagnostics/methods. Therefore,  
114 we provide a comprehensive update and an expanded review, based on broader evaluation  
115 studies, of all the current diagnostic methods designed to detect colistin resistance.

### 116 ***Literature search strategy***

117 A comprehensive literature search was performed using Pubmed, Web of Science, and  
118 ScienceDirect. Articles published in English, from January 2016 to September 2020, were  
119 retrieved and screened using the following keywords: “colistin AND resistan\*”, “polymyxin  
120 AND resistan\*” in permutation and combination with “detection” and “diagnostics”, in a  
121 factorial order. The search was based on articles that were evaluating methods that are  
122 currently used for the detection of colistin resistance and *mcr*-genes. Studies based on  
123 epidemiology, risk factors, surveillance, non-English language articles, other reviews, case  
124 reports, or case studies were excluded. The inclusion and exclusion methods used in this  
125 review are demonstrated in Figure 1. The following data was extracted from the included  
126 articles and summarized in Table 1: Diagnostic methods used, types and sample size (in

127 numbers) of bacterial species used in the evaluation, sensitivity, specificity, EA, CA, ME,  
128 VME, relative cost and TAT.

## 129 **2. Phenotypic tests**

### 130 ***Broth Microdilution (BMD)***

131 The Clinical and Laboratory Standard Institute (CLSI) and European Committee on  
132 Antimicrobial Susceptibility Testing (EUCAST) have jointly recommended that the MIC  
133 (minimum inhibitory concentration) testing of colistin be performed according to the ISO-  
134 20776 standard BMD method<sup>25, 26</sup>. Methods such as agar dilution, disc diffusion and gradient  
135 diffusion have been ruled out as it was shown that the large molecular size of colistin makes it  
136 poorly diffusible through agar<sup>1, 26, 27</sup>.

137 It has been recommended that BMD be used with plain polystyrene trays and colistin sulfate  
138 salt without the addition of any surfactants<sup>26, 28</sup>. The CLSI had initially recommended the  
139 addition of polysorbate-80 (P-80) to alleviate the binding of polymyxin to negatively charged  
140 polystyrene surfaces (binding of colistin to polystyrene reduces the concentration of colistin)<sup>1</sup>.  
141 However, there were concerns that the surfactant would act in a synergistic manner with  
142 colistin, and is therefore not recommended at this time<sup>28</sup>. Moreover, several studies have  
143 suggested that the loss of colistin concentration could be reduced by minimizing contact with  
144 unexposed pipette tips and by storing colistin solution in glass tubes<sup>28</sup>.

145 The CLSI and EUCAST have established a colistin susceptible breakpoint of  $\leq 2$  mg/L and a  
146 resistant breakpoint of  $>2$  mg/L for *Acinetobacter spp.* and *Pseudomonas aeruginosa*<sup>25</sup>.  
147 However, only the EUCAST has the same breakpoints for *Enterobacterales* whilst the CLSI  
148 has an epidemiological cut-off value of 2 mg/L that defines *Escherichia coli*, *Klebsiella*  
149 *pneumoniae*, *Raoultella ornithiolytica*, *Enterobacter aerogenes* and *Enterobacter cloacae* as  
150 either wild type or non-wildtype<sup>1, 25</sup>.

151 BMD performed by the reference ISO-20776 method is currently the only gold standard for  
152 determining colistin MIC and evaluating CA, EA, ME and VME; yet it is laborious and rarely  
153 performed in routine clinical microbiology laboratories<sup>1</sup>. Instead, diffusion methods and  
154 automated AST systems are more commonly used<sup>1</sup>. Chew *et al* (2017) evaluated the  
155 detection of *mcr-1* positive *Enterobacterales* by BMD in comparison with commercial  
156 automated AST systems viz., Sensititre, Microscan and Vitek 2, and a gradient diffusion test  
157 *i.e.*, E-test. This study found that none of the commercial testing methods meet the CLSI  
158 recommendation standard for commercial antimicrobial susceptibility testing systems: EA

159  $\geq 90\%$ , CA  $\geq 90\%$ , VME  $\leq 1.5\%$ , and ME  $\leq 3.0\%$ . Even so, the Sensititre and MicroScan were  
160 shown to detect 100% of the *mcr-1* positive isolates (Refer to Automated AST systems  
161 below)<sup>25</sup>. The BMD's overall sensitivity could be improved by reducing the susceptible  
162 breakpoint to  $\leq 1\text{mg/L}$  and using microtitre plates that were manufactured to reduce adsorption  
163 <sup>25, 28</sup>.

164 The methodological challenges surrounding the standard BMD have led to interest in finding  
165 alternative means for detecting polymyxin resistance in Gram-negative bacteria<sup>1, 28</sup>. Broth  
166 macrodilution method has been shown to be an obvious alternative, as it employs the use of  
167 glass tubes instead of polystyrene<sup>28</sup>. Notwithstanding, the broth macrodilution method is not  
168 a popular alternative because it requires the same preparation and TAT as the standard BMD.  
169 Hence, commercially available selective media and rapid colorimetric assays have become  
170 popular for screening (Table 1)<sup>28</sup>.

#### 171 ***Diffusion and Agar dilution methods***

172 Diffusion methods for colistin susceptibility testing are still commonly used despite being  
173 disapproved by the CLSI and EUCAST<sup>1, 27, 29, 30</sup>. Two of the commercial gradient tests, E-test  
174 and MIC Test Strip, performed poorly for colistin-resistant isolates in one study<sup>30</sup>. Disc  
175 diffusion is not an MIC determiner, although it perform similarly to gradient diffusion tests,  
176 generating high levels of VMEs (false-susceptible) whilst agar dilution has a tendency of  
177 generating higher MICs (which results in high MEs) than the reference method<sup>1, 25, 27, 28, 30-32</sup>.  
178 These findings further support the conclusion that polymyxins are poorly diffused in agar and  
179 therefore corroborates the CLSI and EUCAST recommendations to abandon diffusion and  
180 agar dilution methods<sup>27, 30, 32</sup>.

#### 181 ***Manual commercial MIC-determiners: UMIC, MMS, and ComASP Colistin***

182 UMIC (Biocentric, Bandol, France), MICRONAUT MIC-Strip (MMS) (MERLIN  
183 Diagnostika GmbH, Bornheim, Germany), ComASP Colistin (formerly SensiTest™,  
184 Liofilchem, Italy) are non-automated broth microdilution-based tests<sup>30</sup>. UMIC and MMS  
185 both consist of a plastic device with 12 wells that allow for different colistin concentrations to  
186 be tested for a single isolate without the need for any additional equipment<sup>26, 30, 33</sup>. Whilst the  
187 ComASP (SensiTest) Colistin, consists of a compact panel for four isolates with freeze-dried  
188 antibiotics in seven two-fold dilutions<sup>5, 34</sup>. Matuschek *et al* (2018) evaluated all three tests,  
189 where ComASP had a poor EA for *Acinetobacter* spp., and UMIC was poor for *Acinetobacter*  
190 spp. and *P. aeruginosa*. The overall performance of ComASP was improved (as shown in

191 Table 1) when certain species were removed and *K. pneumoniae* and *E. coli* were tested,  
192 suggesting that ComASP is not suitable for testing all species<sup>5</sup>.

193 UMIC was generally found to lower the MIC of some colistin-resistant isolates, which may  
194 result in failure to detect colistin-resistant isolates with low MICs ( $\leq 8$  mg/L)<sup>26, 33</sup>. More so,  
195 UMIC failed to detect four *Stenotrophomonas maltophilia* isolates with MICs ranging from  
196 8mg/L to 32mg/L in one study, although in another study all *S. maltophilia* isolates were  
197 detected accordingly<sup>26, 33</sup>. The MMS had the best correlation to the BMD amongst the three  
198 tests; however, there aren't sufficient studies evaluating this test (Table 1)<sup>30</sup>.

### 199 ***Automated AST systems: BD Phoenix, MICRONAUT-S, MicroScan, Sensititre and Vitek 2***

200 Automated antimicrobial susceptibility testing (AST) systems are of particular interest for  
201 colistin susceptibility testing due to their ease of use than the reference BMD<sup>26, 30</sup>. Several  
202 studies have shown that some automated AST systems can achieve results that are relatively  
203 similar to those of the reference BMD<sup>25, 26, 30, 32, 35</sup>. The Sensititre recorded a high rate of  
204 agreement with the reference BMD in several studies, particularly demonstrating the highest  
205 potential for detecting *mcr-1*-producing *Enterobacteriales* together with MicroScan in one  
206 study<sup>25, 26, 30</sup>. However, MicroScan has a tendency of overestimating MICs (which may result  
207 in false-resistant isolates) of *E. cloacae*, *Salmonella spp.* and non-fermenters (*A. baumannii*,  
208 *P. aeruginosa* and *S. maltophilia*)<sup>5, 26</sup>. Vitek 2 had the highest rate of VMEs at 36% for *mcr-*  
209 *1*-producing isolates and failed to detect colistin resistance in eight *mcr*-negative *E. cloacae*  
210 complex isolates<sup>25</sup>. However, another study found that Vitek 2 had VMEs of 2.04% for *K.*  
211 *pneumoniae* isolates that were *mcr*-negative<sup>36</sup>. MICRONAUT-S (MERLIN Diagnostika  
212 GmbH, Bornheim, Germany) performed similarly to the Sensititre although it had two VMEs  
213 whereas the Sensititre had none<sup>30</sup>. The Sensititre test is unique as it can be performed  
214 manually or semi-automated unlike MicroScan, MICRONAUT-S, Vitek 2 and BD Phoenix  
215 that require an automated inoculation delivery system<sup>26, 30</sup>.

216 The detection of colistin resistance by BD Phoenix highly agreed with that of the reference  
217 BMD method<sup>32, 35</sup>. Nevertheless, the BD Phoenix 100 system failed to detect colistin-  
218 resistant isolates that may have hetero-resistance; the BD Phoenix M50 had 5.7% MEs, all of  
219 which were within twofold dilutions, as compared to the reference BMD<sup>35, 37, 38</sup>. Notably, the  
220 BD Phoenix M50 has not been evaluated on strains that exhibit heteroresistance; hence, its  
221 evaluation is limited compared to BD Phoenix 100 (Table 1)<sup>35</sup>.

### 222 ***Chelator-based and non-chelator-based tests***

## 223 *Rapid Polymyxin NP*

224 The Rapid Polymyxin NP is a colorimetric test that is based on glucose metabolism to detect  
225 the growth of *Enterobacteriales* at a given concentration of a polymyxin (colistin or  
226 polymyxin B)<sup>11</sup>. Resistance to polymyxins is demonstrated by a colour change (orange to  
227 yellow) of a pH indicator, *i.e.* phenol red, as a result of acid formation associated with the  
228 metabolism of glucose<sup>11, 39, 40</sup>. Rapid polymyxin NP test is commercially available  
229 (ELITechGroup, Puteaux, France) and can also be performed in-house with the preparation of  
230 two solutions<sup>11, 41</sup>. The in-house rapid polymyxin NP test is prepared with stock solutions of  
231 polymyxins and a rapid polymyxin NP solution, which consists of cation-adjusted Mueller-  
232 Hinton broth powder, phenol red indicator and D(+)-glucose<sup>11</sup>. This test has demonstrated an  
233 excellent detection of colistin resistance in several studies, including detecting colistin  
234 resistance directly from blood cultures with a sensitivity of 100%<sup>40, 42, 43</sup>. However, in a study  
235 using ComASP as the reference, the Rapid Polymyxin NP test had a lower specificity than  
236 BD Phoenix, Vitek 2 and E-test with *K. pneumoniae* isolates (Table 1)<sup>36</sup>. In another study,  
237 Rapid Polymyxin NP test recorded a lower sensitivity and specificity (71.1% and 88.6%) than  
238 E-test, which had a sensitivity and specificity of 80.4% and 95.8% respectively<sup>44</sup>. However,  
239 10 isolates that were included in the calculations of the E-test performance were excluded  
240 from the Rapid Polymyxin NP test as they were considered non-evaluable due to no growth in  
241 the growth control<sup>44</sup>.

242 Although the Rapid Polymyxin is limited to use on *Enterobacteriales*, the test is easy to  
243 perform and the final results can be read in no more than four hours, with the majority of the  
244 results being positive in two hours<sup>31, 32, 42, 45</sup>.

## 245 *Andrade Screening Antimicrobial Test (ASAT)*

246 Following the Rapid Polymyxin NP test, another colorimetric assay for detecting colistin  
247 resistance in *Enterobacteriales* was developed<sup>13</sup>. The Andrade Screening Antimicrobial Test  
248 (ASAT) was developed using an in-house broth consisting of 10g peptone, 5g sodium  
249 chloride, 3g beef extract and 10mL Andrade indicator made with 0.5g acid fuchsin and 16mL  
250 NaOH in 100mL water<sup>13</sup>. The evaluation of the ASAT was performed on 300  
251 *Enterobacteriales* in tubes containing 175  $\mu$ L of Andrade broth and colistin at a concentration  
252 of 3.8 mg/L<sup>13</sup>. The test achieved a sensitivity and specificity of 90.7% and 100%  
253 respectively, where a positive result in the presence of colistin was shown by a change in  
254 colour of the Andrade indicator (light pink to magenta)<sup>13</sup>.



255 The ASAT test was further evaluated against the BD Phoenix using 1096 *Enterobacteriales*  
256 clinical isolates<sup>13</sup>. However, this evaluation demonstrated discrepancies between the two  
257 methods where 10 *E. coli*, seven *K. pneumoniae* and one *E. cloacae* colistin-resistant isolates  
258 were accurately detected by ASAT and not by BD Phoenix<sup>13</sup>. Most of the isolates that were  
259 not detected by BD Phoenix had colistin MIC values ranging between 4-8 µg/mL and carried  
260 *mcr-1* genes<sup>13</sup>. Although most of the colistin-resistant *K. pneumoniae* isolates had colistin  
261 MIC values >16 µg/mL and carried *bla<sub>KPC</sub>* genes, only three isolates with colistin MIC  
262 values ≤16 µg/mL showed discrepancies between the two methods<sup>13</sup>.

#### 263 *Rapid Polymyxin Acinetobacter, Rapid Polymyxin Pseudomonas and Rapid Resapolymyxin* 264 *NP*

265 ElitechGroup introduced Rapid Polymyxin tests for *Acinetobacter spp.* and *Pseudomonas spp.*  
266 in October 2018<sup>46, 47</sup>. Both tests use the same principle as the Rapid Polymyxin NP test as  
267 they rely on the colorimetric detection of bacterial metabolism in the presence of a defined  
268 concentration of colistin<sup>47</sup>. A positive result by Rapid Polymyxin *Acinetobacter* was read by  
269 a change in colour of a pH indicator, phenol red (red to orange or yellow), whereas the Rapid  
270 Polymyxin *Pseudomonas* uses bromocresol purple pH indicator (green-yellow to violet)<sup>47, 48</sup>.  
271 Sadek *et al* (2020) evaluated the in-house version of the Rapid Polymyxin *Pseudomonas* test,  
272 which agreed with Lescat *et al* (2019), recording 100% sensitivity and a lower specificity of  
273 95%<sup>47, 48</sup>. However, the Rapid Polymyxin *Acinetobacter* had discrepancies, recording no  
274 errors in one study and eight errors (three VMEs and five MEs) in another<sup>46, 47</sup>.

275 The Rapid Resapolymyxin NP test was also developed to detect colistin resistance in all  
276 colistin-resistant Gram-negative bacteria including *Enterobacteriales*, *A. baumannii* and *P.*  
277 *aeruginosa*<sup>49</sup>. The test was carried out by inoculating 20 µL standardized bacterial suspension  
278 (3.5 McFarland) in Mueller-Hinton broth containing a final concentration of 3.75 mg/L of  
279 colistin sulfate<sup>49</sup>. A 10% concentration of resazurin PrestoBlue was added after three hours of  
280 incubating the medium and the results were read over a period of one hour after the addition  
281 of resazurin PrestoBlue<sup>49</sup>. The detection of colistin resistance is based on the reduction of  
282 blue resazurin to pink resorufin by metabolically active cells in the presence of a defined  
283 concentration of colistin<sup>49</sup>.

284 The evaluation of Rapid ResaPolymyxin NP test showed reliable detection of colistin  
285 resistance in non-fermenters and 100 % accuracy in *Enterobacteriales*<sup>49-51</sup>. Although the slow  
286 growing nature of *Pseudomonas spp.* resulted in an hour delay before a change in colour

287 could be observed, *Enterobacterales* and *Acinetobacter* spp. were detected in less than four  
288 hours<sup>38, 50</sup>. The Rapid ResaPolymyxin NP test makes up for the limitations of Rapid  
289 Polymyxin NP test in testing polymyxin resistance in Gram-negative bacilli (including non-  
290 fermenters) regardless of the mechanism of resistance<sup>49, 50</sup>. Therefore, this test is more  
291 suitable for general categorization of colistin-resistant and colistin-susceptible isolates than  
292 the Rapid Polymyxin NP test<sup>50</sup>.

### 293 *EDTA/DPA-based colistin resistance tests*

294 The MCR catalytic domain, phosphoethanolamine (PEtN) transferase, is a zinc  
295 metalloprotein, where zinc deficiency reduces colistin MICs in MCR-producing *E. coli*<sup>52-54</sup>.  
296 The combined disk test, colistin MIC reduction test, modified rapid polymyxin NP test and  
297 alteration zeta potential, are four tests that are based on the inhibition of MCR activity by  
298 EDTA and have been strategically developed to detect *mcr*-genes<sup>52</sup>.

299 The combined disk test (CDT) uses 10 $\mu$ L of 100mM EDTA solution, which is impregnated  
300 into one of two 10 $\mu$ g colistin disks<sup>52</sup>. The two colistin disks are placed on Mueller Hinton  
301 agar plates swabbed with 0.5 McFarland bacterial suspension and incubated for 18 to 24h at  
302 37 $\square$ <sup>52</sup>. Results are read as positive if there is an increase of  $\geq$ 3mm in inhibition zone around  
303 the colistin disk containing EDTA as compared to the colistin disk without EDTA<sup>52</sup>. This  
304 method has recorded a sensitivity and specificity of 96.7% and 89.6% respectively by the  
305 developer<sup>52</sup>. However, a latter study recorded less promising results, with a sensitivity and  
306 specificity of 12% and 65.2% respectively, Hence, further evaluation studies must be  
307 conducted on this test as the current results seem unreliable<sup>54</sup>.

308 A pre-diffusion method of the CDT was evaluated, where two colistin disks were placed and  
309 allowed to diffuse for 2 hours on MH agar<sup>53</sup>. The disks were removed and the plates were left  
310 at room temperature for 18-24h after which two disks containing 1 $\mu$ mol of EDTA were  
311 strategically placed (one exactly where the colistin disk had been placed and the other, at least  
312 30 mm away)<sup>53</sup>. Diameters of inhibition zones were measured after 18h of incubation and  
313 colistin-resistant MCR-positive isolates demonstrated a  $\geq$ 5mm increase in inhibition zone  
314 around the disks<sup>53</sup>. The pre-diffusion method, using a cut-off value of  $\geq$ 5mm, improved the  
315 CDT to 100% accuracy for *mcr* detection<sup>53</sup>; it has however not been extensively evaluated to  
316 ensure reproducibility and seems more complicated, laborious and time-consuming than the  
317 CDT.

318 Colistin MIC reduction (CMR) test was performed by broth microdilution using MH broth  
319 without cation supplementation but with 80µg/mL EDTA solution instead<sup>52</sup>. It was  
320 considered that cation supplementation with calcium and magnesium would impair the  
321 inhibitory activity of EDTA; moreover, calcium could favour the activity of putative PEtN  
322 transferases in *E. coli*<sup>52</sup>. Even so, this method did not efficiently detect *mcr*-producers among  
323 *Enterobacterales* isolates although different concentrations of EDTA were used<sup>52, 55</sup>.

324 Innovatively, EDTA has been added to the Rapid Polymyxin NP test in what is termed the  
325 modified rapid polymyxin NP (MPNP) test to enable it to identify MCR producers. MPNP is  
326 the Rapid Polymyxin NP test with the addition of two wells filled with colistin-free solution  
327 and colistin-containing solution, both with 80µg/mL EDTA<sup>52</sup>. Results were read as positive  
328 for the production of MCR-1 PEtN transferase if there was no change in colour of red phenol  
329 in the presence of colistin and EDTA<sup>52</sup>. The presence of EDTA in the MPNP test  
330 successfully detected MCR-1 positive colistin-resistant *E. coli* isolates as demonstrated by a  
331 sensitivity and specificity of 96.7% and 100% respectively<sup>52</sup>.

332 Finally, addition of EDTA results in an alteration of zeta potential of membrane charge,  
333 which is measured to determine MCR expression<sup>52</sup>. Particle size and zeta potential of  
334 colistin-susceptible and colistin-resistant bacterial cells grown in MH broth with or without  
335 80µg/ml EDTA was measured using a ZETAPALS zeta potential analyser<sup>52</sup>. Colistin-  
336 susceptible and colistin-resistant MCR-1 *Enterobacterales* demonstrated zeta potential values  
337 between -21.54 and -44.21 mV whilst colistin-resistant MCR-1 positive had  $\leq$ -20 mV (-4.20  
338 to -19.34 mV)<sup>52</sup>. In the presence of EDTA, an alteration of zeta potential ranging from -21.13  
339 to -40.81 was observed in colistin-resistant MCR-1 positive *E. coli* isolates<sup>52</sup>. A zeta potential  
340 ratio ( $R_{zp} = ZP_{+EDTA} / ZP_{-EDTA}$ ) was calculated for all isolates and a cutoff value of  $R_{zp} \geq 2.5$   
341 as a criterion for the presumed detection of MCR-1-positive *E. coli* isolates was established<sup>52</sup>.  
342 Alteration of zeta potential yielded a sensitivity and specificity of 95.1% and 100%  
343 respectively. However, EDTA had no inhibitory effect on *mcr*-1-positive *K. pneumoniae*  
344 isolates<sup>52</sup>.

#### 345 *Colistin broth-disk elution (CBDE)*

346 Simner *et al* (2019) developed the colistin broth-disk elution method (CBDE), which was  
347 performed on a collection of *Enterobacterales*, *P. aeruginosa* and *A. baumannii* isolates: four  
348 tubes were assigned to each isolate<sup>56</sup>. The four tubes contained 10mL of CA-MHB with  
349 colistin disks to yield final concentrations of 0,1,2 and 4 µg/mL, respectively<sup>56</sup>. The tubes

350 were incubated for 30 minutes at room temperature, allowing colistin to dissolve into the  
351 broth, after which 50 $\mu$ L aliquot of 0.5 McFarland standard bacterial suspensions were added  
352 to each tube<sup>56</sup>. Colistin MIC values were visually read after 16-20h of incubation at 35 $\square$  in  
353 ambient air<sup>56</sup>. In this study, CBDE was compared to the reference BMD and Sensititre,  
354 where the CBDE had a CA and EA of 98% and 99%, respectively as compared to both BMD  
355 methods<sup>56</sup>. Three *mcr-1*-producing *E. coli* isolates resulted in a VME rate of 8% due to one  
356 dilution difference by CBDE and BMD; however, no errors were observed when CBDE was  
357 compared to BMAD<sup>56</sup>.

358 Three studies have evaluated the modified version of the CBDE<sup>57-59</sup>. Bell *et al* (2019) was the  
359 first to describe a modified CBDE method. The method was performed as previously  
360 described, however 1mM EDTA was used by adding 20 $\mu$ L of 0.5M EDTA to each tube  
361 containing CA-MHB and 10 $\mu$ g colistin disks<sup>58,59</sup>. Fenwick *et al* (2020) added a fifth tube to  
362 generate CBDE+EDTA with colistin concentrations of 0, 0.4, 1, 2 and 4  $\mu$ g/mL, respectively.  
363 The CBDE+EDTA method has shown overall sensitivity and specificity of 100% and 94.3-  
364 95.8% respectively, for screening the presence of MCR in *Enterobacteriales* and *P.*  
365 *aeruginosa*<sup>58,59</sup>.

366 Dalmolin *et al* (2019) evaluated the CBDE method using final volumes of 1mL and 200 $\mu$ L in  
367 colistin broth microelution (CBM) and the microelution test (MPT), respectively. The two  
368 methods were evaluated on 68 *Enterobacteriales*, nine *A. baumannii* and eight *P. aeruginosa*  
369 isolates from human and animal samples<sup>57</sup>. Both CBDE methods were performed as  
370 previously described, however the CBDE mixture was fractioned in 1mL tubes for the CMB  
371 test and 200 $\mu$ L in microtiter plates for MPT test<sup>57</sup>. Additionally, this study evaluated the  
372 colistin susceptibility test tube (CSTT), which was performed using one tube with 5mL CA-  
373 MHB and 10  $\mu$ g colistin disk to yield a final concentration of 2  $\mu$ g/mL<sup>57</sup>. All three methods  
374 presented unsatisfactory MEs and VMEs; particularly, they performed poorly for non-  
375 fermenters<sup>57</sup>.

376 Colistin broth-disk elution methods are performed using reagents that are readily available at  
377 low cost<sup>56,59</sup>. However, CBDE with EDTA could be more suitable for screening *mcr*-positive  
378 isolates as CBDE alone tends to underestimate MICs of *mcr*-positive isolates<sup>56,58,59</sup>.

### 379 *Colistin-MAC test*

380 *The colistin-MAC test was designed to detect mcr-genes on the basis of colistin MIC*  
381 *reduction by a fixed concentration (900 $\mu$ g/mL) of dipicolinic acid (DPA)<sup>60</sup>. The test was*

382 carried out in 96-well microtitre plates using CA-MHB with DPA stock solution prepared in  
383 dimethyl sulfoxide<sup>60</sup>. Coppi et al (2018) established a cutoff value of  $\geq 8$ -fold colistin MIC  
384 reduction in the presence of DPA for the presumptive identification of *mcr*-positive isolates.  
385 However, a latter study used a different cutoff value, where  $\geq 3$  twofold MIC reduction in the  
386 presence of DPA indicated a positive result<sup>55</sup>. The Colistin MAC test was found to perform  
387 well for *E. coli* isolates and ineffective in detecting *mcr*-genes of *K. pneumoniae* and  
388 *Salmonella spp.*<sup>5, 55, 60</sup>. The lack of inhibitory effect of DPA in *K. pneumoniae* isolates can be  
389 attributed to a decrease in DPA permeability or the existence of other mechanisms of colistin  
390 resistance in these strains<sup>60</sup>. Moreover, the addition of DPA resulted in reductions and  
391 increments in MICs of some isolates, although these adjustments did not affect the accurate  
392 sensitivity classification of the isolates<sup>5</sup>. Colispot

393 Colispot is a test developed by Jouy *et al* (2017), it consists of applying a single drop of 8  
394 mg/L colistin solution on MH agar to detect colistin resistance. The test was initially carried  
395 out by applying 10 $\mu$ L drop of colistin (twofold concentrations ranging from 0.25 to 256  
396 mg/L) on MH agar inoculated with 10<sup>5</sup> *E. coli* suspensions<sup>61</sup>. Each drop was strategically  
397 placed so that their centres were at least 2 cm away from each other to allow for an inhibition  
398 zone of >5 mm<sup>61</sup>. The colispot test was evaluated on 106 *E. coli* isolated from veterinary  
399 faecal samples and 35 *mcr*-1 positive *E. coli* isolates from bovine samples<sup>61</sup>. Susceptible  
400 isolates had a clear inhibition zone around colistin drops with concentrations ranging from  
401 0.25 to 4mg/L although the size of inhibition zone was dependent on the colistin  
402 concentration tested<sup>61</sup>. A clear inhibition zone of 8 to 10 mm was observed with all the  
403 susceptible isolates when a single concentration of colistin solution with CLSI/EUCAST  
404 bacterial inoculum size and incubation temperature were used<sup>61</sup>. This test can be routinely  
405 used when performing diffusion methods as it can improve the detection of acquired  
406 resistance in *E. coli*<sup>61</sup>.

407

#### 408 ***Lateral Flow-Immunoassay***

409 Monoclonal antibodies (MA) were used to develop lateral flow assays to detect MCR-1-  
410 producing bacterial isolates<sup>62</sup>. In this study, 177 and 121 *Enterobacterales* isolates from  
411 human and animal samples were obtained, respectively<sup>62</sup>. Bacterial colonies were isolated  
412 from agar plates, suspended in extraction buffer and dispensed on the MA-containing cassette  
413 where they were allowed to migrate for 15 minutes<sup>62</sup>. All MCR-1-producing isolates were

414 detected accordingly as shown by a pink band on the test line and control line of the assays.  
415 Furthermore, this test was able to detect MCR-2-producing isolates<sup>62</sup>. The same assay is  
416 currently marketed as the NG-Test MCR-1 by NG Biotech in France<sup>58</sup>. Initially, the  
417 evaluation of the NG-Test MCR-1 resulted in eight false-positive results that were ultimately  
418 resolved to negatives apart from one isolate that was found to be an MCR-2 producer<sup>58</sup>.  
419 Whilst the detection of the MCR-2 product by the NG Test MCR-1 further confirms the  
420 results of the developers, cross-reactivity with MCR-2 limits the accuracy of the assay for the  
421 MCR-1 producers.<sup>58</sup> Nonetheless, the lateral flow immunoassays were found to be highly  
422 sensitive, easy to use and cost-effective for detecting MCR-1/-2<sup>58,62</sup>.

### 423 ***Agar-based screening medium***

#### 424 *Superpolymyxin*

425 Superpolymyxin is a selective medium for polymyxin-resistant Gram-negative bacteria that is  
426 based on eosin methylene blue agar<sup>63</sup>. The medium was developed with the optimal colistin  
427 concentration of 3.5 µg/mL, 10 µg/mL of daptomycin (to inhibit potential growth of Gram-  
428 positive strains) and 5 µg/mL of amphotericin B as an antifungal. Nordmann *et al* (2016)  
429 designed Superpolymyxin for screening intrinsic and acquired polymyxin-resistant Gram-  
430 negative bacteria as previous screening media containing deoxycholic acids and a high  
431 concentration of colistin inhibited the growth of strains with acquired resistance and low MIC  
432 values (Table 1).

433 The use of eosin Y and methylene blue dyes helped distinguish lactose-fermenters (dark  
434 brown to purple) from non-fermenters (colourless)<sup>11</sup>. This medium distinguishes lactose-  
435 fermenting *E. coli* (metallic green sheen) from other *Enterobacterales*, including non-  
436 fermenting *E. coli* (dark brown to purple)<sup>64, 65</sup>. However, studies evaluating other selective  
437 media against Superpolymyxin have shown a weaker detection of non-fermenters by  
438 Superpolymyxin<sup>63,66</sup>.

439 This medium was able to detect colistin-resistant Gram-negative bacteria directly from  
440 bacterial culture and clinical samples (*i.e.*, rectal swabs and stool samples) with high  
441 sensitivity and specificity<sup>44, 67, 68</sup>. However, direct inoculation from clinical swabs may result  
442 in the growth of colistin-susceptible isolates on the medium, therefore resulting in a poor  
443 specificity (as low as 80.45%)<sup>44, 68</sup>. The poor specificity of Superpolymyxin for clinical  
444 samples was suspected to be due to sample storage conditions and bacterial inoculum effect  
445 ( $\geq 10^6$  CFU/mL)<sup>44, 67</sup>.

446 Two studies have recorded a low sensitivity ( $\leq 77.3\%$ ) for *Enterobacter* spp., which may be  
447 due to hetero-resistant phenotypes (*i.e.*, may have a small population of bacterial cells with  
448 colistin resistance)<sup>67, 69</sup>. In both studies, the Superpolymyxin plate was inoculated with 10  $\mu\text{L}$   
449 of a 0.5 McFarland bacterial suspension. Therefore, a higher inoculum for *Enterobacter* spp.  
450 was suggested<sup>67, 69</sup>.

#### 451 *CHROMagar*<sup>TM</sup> COL-APSE.

452 *CHROMagar*<sup>TM</sup> COL-APSE by *CHROMagar* (Paris, France) is the first selective medium  
453 designed to detect and differentiate all *Acinetobacter* spp., *Enterobacterales*, *Pseudomonas*  
454 spp. and *Stenotrophomonas* spp.<sup>63</sup>. The agar plates were prepared in-house using a  
455 dehydrated *CHROMagar* base medium and supplements (S1 and X192) containing colistin  
456 sulfate and oxazolidinones to enhance the growth of colistin-resistant Gram-negative bacteria  
457 and inhibit that of Gram-positive bacteria<sup>63</sup>. Swarming by *Proteus* spp. was inhibited by  
458 adding p-nitrophenyl glycerol to the medium preparation, which did not disrupt the medium's  
459 performance. This makes *CHROMagar*<sup>TM</sup> COL-APSE suitable for screening mixed specimens  
460<sup>63</sup>.

461 The accuracy in detecting and differentiating colistin-resistant Gram-negative species was  
462 evaluated by Osei Sekyere *et al.* (2020), where the morphological appearance of the detected  
463 strains was as described by the manufacturer. Moreover, three studies that have evaluated  
464 *CHROMagar*<sup>TM</sup> COL-APSE agreed that the medium had a high sensitivity in detecting  
465 isolates harbouring *mcr* genes<sup>5, 63, 70</sup>. However, there was significant difference in the  
466 sensitivity and specificity recorded by Abdul Momin *et al* (2017) and Osei Sekyere *et al*  
467 (2020) (Table 1). The poor performance in the recent study could be due to the use of cultured  
468 bacteria instead of using serial dilutions in broth (Table 1)<sup>5, 63</sup>.

#### 469 *ChromID*<sup>®</sup> Colistin R

470 *ChromID*<sup>®</sup> Colistin R is a chromogenic selective medium that is primarily used for isolating  
471 colistin-resistant *Enterobacterales* from clinical stools and rectal swab samples<sup>71</sup>. Similar to  
472 *CHROMagar*<sup>TM</sup> COL-APSE, the medium can differentiate between bacterial species based on  
473 morphological appearance of bacterial colonies *i.e.*, *E. coli* (pink to burgundy), *Klebsiella*  
474 spp., *Enterobacter* spp., *Serratia* (blue to green), *Salmonella* spp. (white or colourless) and  
475 *Proteaeae* tribe (beige-brown) (Table 1)<sup>64, 71</sup>.

476 The assessment of *ChromID*<sup>®</sup> Colistin R and Superpolymyxin using stool and rectal swab  
477 samples resulted in an overall better performance by *ChromID*<sup>®</sup> Colistin R<sup>64</sup>. The lower limit

478 of detection (LOD) of this medium being at least one log lower in 69.2% of the isolates  
479 detected on both media, whereas Superpolymyxin only had a better LOD for 7.7% isolates<sup>64</sup>.  
480 Nonetheless, Superpolymyxin could be directly inoculated with stool or rectal swab samples  
481 without a 4-5 hours enrichment step required by ChromID® Colistin R; and the final  
482 sensitivity (84.9 to 86.8%) recorded for this medium was achieved after extending the TAT  
483 from 24 hours to 48 hours (which also allowed for the detection of an *mcr-1* producing *E. coli*  
484 isolate)<sup>64</sup>.

485 A study by Thiry *et al.* (2019) evaluated this medium against CHROMagar™ COL-APSE on  
486 158 colistin-resistant bovine *E. coli* isolates. Half (48/96) of the isolates considered to be  
487 intermediate to the disk diffusion test had MIC > 2 and were able to grow on both media, with  
488 two more isolates growing on ChromID® Colistin R alone<sup>70</sup>. Although both media could  
489 support the growth of (21/22) *mcr-1*-positive and (13/14) *mcr-2*-positive isolates,  
490 CHROMagar™ COL-APSE has an advantage over ChromID® Colistin R as it is not limited  
491 to (isolating and differentiating) *Enterobacterales* (Table 1)<sup>63, 70</sup>

#### 492 *LBJMR medium*

493 Lucie-Bardet-Jean-Marc-Rolain (LBJMR) medium, a polyvalent medium based on Purple  
494 agar, has been designed for the isolation of colistin-resistant Gram-negative bacteria as well  
495 as vancomycin-resistant Gram-positive bacteria<sup>66</sup>. The medium was developed by adding  
496 glucose (7.5 g/L), colistin sulfate (4 µg/mL) and vancomycin (50 µg/mL) to 31g/L Purple agar  
497 base<sup>66</sup>. One hundred and forty three bacterial isolates, including colistin-resistant  
498 *Enterobacterales* and non-fermentative Gram-negative bacilli were used to evaluate this  
499 medium, where the specificity and sensitivity were 100%<sup>66</sup>. The medium was further  
500 evaluated on 56 *mcr-1* positive and 10 *mcr-1*-negative chicken and human stool samples as  
501 well as two clinical rectal swabs<sup>66</sup>. The study found that the LBJMR could detect *mcr-1*  
502 positive isolates with high sensitivity, particularly showing a higher sensitivity for colistin-  
503 resistant non-fermenters than Superpolymyxin<sup>66</sup>. Furthermore, the LBJMR medium does not  
504 contain daptomycin and amphotericin B, which are used in some of the agar-based media *i.e.*  
505 Superpolymyxin, to inhibit the growth of Gram-positive bacteria, including vancomycin-  
506 resistant *Enterococcus*<sup>66</sup>

#### 507 *Luria-Bertani (LB) medium*

508 A selective medium for detecting colistin-resistant *Enterobacterales* (including those with  
509 *mcr-1* genes) in spiked stools was evaluated<sup>72</sup>. The medium was developed by adding



510 4mg/mL colistin, 10mg/mL vancomycin, and 5mg/mL amphotericin B to agar medium made  
511 with 25g of Luria-Bertani (LB) powder <sup>72</sup>. Nine *Enterobacterales* isolates were collected,  
512 seven of which carried *mcr-1* genes <sup>72</sup>. Each of the nine isolates were spiked into donated  
513 faecal samples and serially diluted to final concentrations of 10<sup>2</sup> or 10<sup>3</sup> CFU/mL; 0.5 mL of  
514 the stool mixture were spiked in 4.5 mL of *Enterobacterales* enrichment (EE) broth and  
515 incubated for 24h at approximately 35°C <sup>72</sup>. Afterwards, 10 µL of the spiked EE broth was  
516 inoculated onto the LB medium and incubated at 35°C±2°C for 48 hours in ambient air <sup>72</sup>. The  
517 selective LB medium demonstrated a sensitivity of 100% (Table 1)<sup>72</sup>.

### 518 3. Molecular tests

#### 519 *Amplidiag Carba-R+ MCR assay*

520 The Amplidiag Carba-R+ MCR assay is a multiplex nucleic acid-based test developed for  
521 detecting carbapenemase and *mcr-1/-2* genes from rectal swabs and bacterial culture <sup>73</sup>. The  
522 assay was performed retrospectively and prospectively on 215 Gram-negative bacilli and 51  
523 *Enterobacterales* isolates, respectively <sup>73</sup>. The Amplidiag Carba-R+MCR assay did not detect  
524 one GES carbapenemase-producing *P. aeruginosa*. However, all *mcr-1* and *mcr-2*-producing  
525 isolates were accurately detected (Table 1)<sup>73</sup>.

526 Additionally, this assay was performed on DNA extracted from 100 rectal swabs, including  
527 40 carbapenemase-positive samples: the sensitivity was 92.5% <sup>73</sup>. Two NDM and one OXA-  
528 48 producers were not detected due to a low concentration of bacteria; therefore, the samples  
529 were subjected to an overnight enrichment in brain heart infusion with 0.5 µg/mL ertapenem  
530 <sup>73</sup>. The enrichment step allowed for the detection of two of the three samples that were not  
531 previously detected. One of the samples was an OXA-48 producing *E. cloacae* with an  
532 AcOXA (*Acinetobacter* oxacillinases with carbapenemase activity) gene <sup>73</sup>. The overall  
533 performance of this assay was acceptable, demonstrating sensitivity and specificity ranging  
534 from 92-100% and 86-100% respectively <sup>73</sup>. Moreover, the assay can be performed on  
535 cultured bacteria as well as DNA extracted from rectal swabs in no more than three hours  
536 (Table 1)<sup>73</sup>.

#### 537 *AusDiagnostic MT CRE EU assay*

538 AusDiagnostics MT CRE EU assay is a two-step nested multiplex-tandem PCR (MT-PCR)  
539 assay by AusDiagnostics (Chesham, UK) <sup>74</sup>. One study evaluated the AusDiagnostics MT  
540 CRE EU assay for detecting carbapenemase, *mcr-1*, and *mcr-2* genes <sup>74</sup>. A collection of  
541 *Enterobacterales*, *Pseudomonas spp.* and *Acinetobacter spp.*, including carbapenemase or

542 *mcr-1/-2* producers, were used to evaluate the performance of this assay <sup>74</sup>. The assay was  
543 performed by suspending two to three bacterial colonies grown overnight on Columbia blood  
544 or cystine lactose electrolyte agar in tubes with a sample buffer <sup>74</sup>. The tubes were loaded onto  
545 the AusDiagnostics MT processor platform for template extraction and the first round of PCR  
546 <sup>74</sup>. Lastly, the nested RT-PCR was performed by loading a 384-PCR plate containing the  
547 reaction mix onto the AusDiagnostic MT analyser <sup>74</sup>. The results were automatically read  
548 using the AusDiagnostics MT assay software. The assay failed to detect four out of the 22  
549 *mcr* genes; however, the *mcr* genes were also not detected by the reference PCR <sup>74</sup>.

550 Retrospective and prospective evaluation of the assay resulted in eight and 18 false-positive  
551 results, respectively <sup>74</sup>. An overall sensitivity and specificity of 95.5% and 99.8%,  
552 respectively, were obtained, which improved to 100% following repeats of the assay <sup>74</sup>. The  
553 AusDagnostic MT CRE EU assay detected *mcr-1/-2* genes as well as carbapenemase genes  
554 with minimal hands-on time (Table 1)<sup>74</sup>.

#### 555 ***Loop-mediated isothermal amplification (LAMP)***

556 Loop-mediated isothermal amplification (LAMP) is a nucleic acid amplification method that  
557 allows autocycling strand displacement DNA synthesis at constant temperature using Bst  
558 DNA polymerase <sup>75</sup>. The use of LAMP for detecting *mcr-1* gene was first described by two  
559 studies <sup>76, 77</sup>. Zou *et al* (2017) established a LAMP assay for to detect *mcr-1* gene from  
560 cultured bacteria and spiked human stools. In this study, the LAMP assay was performed in  
561 25 µL reaction mixtures that contained 20mM Tris-HCl, 10mM KCl, 10mM (NH<sub>4</sub>)<sub>2</sub> SO<sub>4</sub>,  
562 8mM MgSO<sub>4</sub>, 0.8 M betaine, 0.1% Tween-20, 1.4 mM of each DNTP and 8U Bst DNA  
563 polymerase <sup>77</sup>. Each reaction mixture had specified amounts of forward and backward inner  
564 primers, outer forward and backward primers, loop primers as well as the appropriate amount  
565 of DNA template <sup>77</sup>. The mixture was covered with 25µL wax and incubated in a dry bath  
566 incubator for 60 minutes at constant temperature, the amplification products were read  
567 visually and by turbidimetry <sup>77</sup>. Visual detection was by colour change of a fluorescent metal  
568 indicator, a positive reaction was demonstrated by the formation of a magnesium  
569 pyrophosphate precipitate, which changed the reaction mixture from orange to green during  
570 amplification <sup>77</sup>.

571 Imirzalioglu *et al* (2017) evaluated the eazyplex SuperBug *mcr-1* kit (Amplex Biosystems  
572 GmbH, Giessen, Germany) for the rapid detection of *mcr-1* gene. Colistin-resistant isolates  
573 were grown on LB media containing colistin sulfate to prevent the loss of *mcr-1* encoding

574 plasmid, whilst colistin-susceptible isolates were grown in the absence of colistin<sup>76</sup>. The *mcr*-  
575 1-detecting LAMP assays were found to detect *mcr*-1 genes accurately, and the in-house  
576 LAMP assay was stated to be more sensitive than conventional PCR assays (Table 1)<sup>76,77</sup>.

577 However, *mcr*-1 detecting LAMP assays cannot detect other potential target genes<sup>75-77</sup>.  
578 Therefore, Zhong *et al* (2019) developed a restriction endonuclease-based multi-LAMP for  
579 the detection of multiple *mcr*-genes. Two separate LAMP systems were established, a double-  
580 LAMP (*mcr*-2 and *mcr*-5) and triple-LAMP system (*mcr*-1, *mcr*-3 and *mcr*-4) which were  
581 performed in 25 µL reaction mixtures<sup>75</sup>. The 25 µL reaction mixture consisted of 12.5 µL  
582 LAMP-reaction mix, 1 µL Bst 2.0 polymerase, 1.25 µL primer mix, 8.25 µL nuclease-free  
583 water, and 2 µL DNA lysate<sup>75</sup>. Amplification products were detected visually by change in  
584 colour of SYBR Green I, which changed from yellow to orange for a positive reaction<sup>75</sup>.  
585 Amplification products were also stained with GoldView TM and analysed by electrophoresis  
586 on 2% agarose gel<sup>77</sup>. Multiplex detection of *mcr*-1 to *mcr*-5 genes was established through  
587 restriction digestion of the LAMP products based on band numbers and fragment lengths  
588 using Hind restriction enzyme<sup>75</sup>.

589 LAMP assays have advantages over conventional PCR in that LAMP is more sensitive, has a  
590 shorter processing time of <60 minutes, is relatively easier to run, and multiplex detections  
591 can be conducted in the same detection system (Table 1)<sup>75-77</sup>.

### 592 ***Matrix-assisted laser desorption ionization-time of flight mass spectrometer (MALDI-TOF*** 593 ***MS)***

594 MALDI-TOF MS is a technique that is based on the production of mass spectra from whole  
595 cells and their contrast to a reference spectrum<sup>78</sup>. This method is widely used for species  
596 identification of pathogens in clinical microbiology laboratories. Giordano and Barnini were  
597 the first to evaluate the possibility of detecting colistin resistance using MADI-TOF MS<sup>78</sup>. In  
598 this study, 139 *K. pneumoniae* isolates from clinical samples were collected, from which  
599 protein was extracted for identification using MALDI-TOF MS (Bruker Daltonik GmbH,  
600 Bremen, Germany)<sup>78</sup>. The MICs of the isolates were determined by Sensititre using a range  
601 of antibiotics including colistin<sup>78</sup>. First, a training set for mass peak analysis was established  
602 using 50/139 of the *K. pneumoniae* isolates from which 400 spectra were obtained and used  
603 for database entry (Main Spectrum Profile) as well as to classify algorithm models<sup>78</sup>. Finally,  
604 the remaining 89/139 isolates were used to conduct the test; 712 spectra were collected from  
605 this set<sup>78</sup>. However, from the 712 spectra, 158 were excluded as they constituted flat-line

606 spectra or outliers, demonstrating identification score below 2.3<sup>78</sup>. Based on the mass signals  
607 and intensities of the bacterial protein samples, two-dimensional peak distribution classified  
608 the training set spectra into two main groups viz., colR-KPn (colistin-resistant *K.*  
609 *pneumoniae*) and colS-KPn (colistin-susceptible *K. pneumoniae*) isolates<sup>78</sup>.

610 The newly created database entry consisted of using *MALDI Biotyper RTC* and *MALDI*  
611 *Biotyper* v3.0 to identify *K. pneumoniae* isolates and for the automatic detection of colistin  
612 resistance, respectively<sup>78</sup>. The automatic classification of the test set resulted in the correct  
613 classification of 71% colR-KPn and 40% colS-KPn<sup>78</sup>. Furthermore, different algorithm  
614 models were tested using ClinProTools v3.0 (Bruker Daltonics). The three algorithms tested  
615 included the Genetic Algorithm (GA), Supervised Neural Network (SNN) and Quick  
616 Classifier (QC)<sup>78</sup>. However, the tested algorithms either had good recognition capability and  
617 cross validation but poor classification of colistin resistance or poor recognition capability and  
618 acceptable classification of colistin resistance<sup>78</sup>. The GA seemed more promising as it was  
619 better suited for biological samples<sup>78</sup>. Therefore, a reliable classification model was created  
620 by combining the most relevant peaks detected from the GA algorithm<sup>78</sup>. The resulting peak  
621 combination of 4507.28/5142.84 Da from GA demonstrated a sensitivity and specificity of  
622 78% and 89%, respectively<sup>78</sup>.

623 Three studies have evaluated MALDIxin, a MALDI-TOF-based assay,<sup>7, 22, 79</sup>. The  
624 MALDIxin test was developed to detect pETN modification in lipid A directly from bacterial  
625 colonies in less than 15 min<sup>22, 79</sup>. Dortet *et al* (2018) evaluated MALDIxin on *A. baumannii*  
626 isolates, where the mass spectrum in colistin-susceptible isolates was characterised by two  
627 sets of peaks at the centre of  $m/z$  1728.1 and  $m/z$  1910.3. The peaks were assigned to bis-  
628 phosphorylated hexa-acyl and bis-phosphorylated hepta-acyl lipid A that had 12 to 14 carbons  
629 making up the acyl chain, respectively<sup>79</sup>. The mass spectrum in colistin-resistant isolates was  
630 observed by two sets of peaks at the centre of  $m/z$  1935.3 and  $m/z$  2033.3, showing  $m/z+25$   
631 and  $m/z+123$  shifts of mass unit of the bis-phosphorylated hepta-acyl lipid A at  $m/z$  1910.3<sup>79</sup>.  
632 The peaks observed at  $m/z$  2033.3 and  $m/z$  1935.3 were assigned to pETN-modified-bis-  
633 phosphorylated hepta-acyl and pETN-modified-mono-phosphorylated hepta-acyl lipid A,  
634 respectively with an acyl chain of 12 carbons in length<sup>79</sup>. The peaks ( $m/z$  2033.3 and  $m/z$   
635 1935.3) associated with pETN-modified lipid A were observed in all colistin-resistant isolates  
636 and were not observed in any of the colistin-susceptible isolates<sup>79</sup>.

637 Furniss *et al* (2019) and Dortet *et al* (2020) described the optimization of the MALDIxin test  
638 for detecting colistin resistance in clinical *E. coli* and *K. pneumoniae* isolates, respectively.

639 Furniss *et al* (2019) optimized the MALDIxin test by adopting the low-resolution linear mode  
640 used by the MALDI Biotyper Sirius system. The optimization was achieved by adding a mild-  
641 acid hydrolysis step, which is required for analysis of clinical isolates in negative ion mode <sup>7</sup>.  
642 The mild-acid hydrolysis step was performed by resuspending a single bacterial colony grown  
643 on MH agar for 18-24h in 200µL distilled water <sup>7,22</sup>, after which 50-100 µL of 2% acetic acid  
644 was added to double-distilled water containing bacterial suspension and heated for 5-15 min  
645 at 98-100°C <sup>7, 22</sup>. For MALDI-TOF analysis, Furniss *et al* (2019) used a MALDI Biotyper  
646 Sirius system, whereas Dortet *et al* (2020) used a 4800 Proteomic Analyzer. The optimization  
647 of the MALDIxin allowed for the identification of L-Ara4N- and pETN-modified lipid A in  
648 *E. coli* and *K. pneumoniae* isolates. Moreover, the optimized methods were able to distinguish  
649 between chromosome-encoded and MCR-mediated colistin resistance <sup>7,22</sup>.

### 650 **Microarray**

651 A commercial CT103XL microarray system that allows for the simultaneous detection of  
652 *mcr-1/-2* and β-lactamase genes was evaluated <sup>80</sup>. The study was conducted on 106  
653 *Enterobacterales* isolates including *mcr-1* and *mcr-2* positive strains, as well as  
654 carbapenemase and extended-spectrum β-lactamase (ESBL)-producing strains <sup>80</sup>. The  
655 CT103XL microarray, which uses a multiplex ligation detection reaction, was performed  
656 following bacterial DNA extraction from bacterial cultures <sup>80</sup>. The commercial CT103XL  
657 microarray was confirmed to simultaneously detect *mcr-1/-2* and β-lactamase genes with  
658 accuracy, although it failed to detect *mcr-3*, which shares 45% and 47% identity to *mcr-1* and  
659 *mcr-2*, respectively <sup>80</sup>.

### 660 **Multiple Cross Displacement Amplification coupled with Gold Nanoparticles-Based lateral** 661 **Flow Biosensor.**

662 A multiple cross displacement amplification (MCDA) method, coupled with gold  
663 nanoparticles-based lateral flow biosensor (LFB) assay for detecting *mcr-1* gene was  
664 developed <sup>81</sup>. The MCDA reaction was performed on extracted DNA from 59 bacterial  
665 isolates, where each 25 µL reaction consisted of 12.5 µL reaction buffer, 1µL Bst DNA  
666 polymerase 2.0, 1µL colorimetric indicator, 1.6 µM of each cross primers, 0.4 µM of each  
667 displacement primers, 0.4 µM amplification primers and 1 µL DNA template <sup>81</sup>. The MCDA  
668 reaction systems were then subjected to isothermal temperature (63°C) for 40min, after which  
669 the amplification products were analysed using 2% agarose gel electrophoresis, colorimetric  
670 indicator and LFB <sup>81</sup>. For *mcr-1* detection by LFB, 0.2 µL of the amplicons was added to the

671 well of the sample pad, followed by the addition of three drops of running buffer (1% Tween  
672 20 and 0.01 mol/L phosphate-buffered saline)<sup>81</sup>. The results were visually read after 1-2 min;  
673 a positive result was demonstrated by two red bands, one at the test-line and the other at the  
674 control line<sup>81</sup>. The results were positive for all *mcr-1* positive isolates and negative for all  
675 non-*mcr-1* isolates<sup>81</sup>.

676 The MCDA-LFB assay was further applied to stool samples spiked with 100 µL dilutions of  
677 bacterial strains<sup>81</sup>. The resulting detection limit was 600fg of *mcr-1* plasmid DNA per  
678 microliter in bacterial culture and  $4.5 \times 10^3$  CFU/mL in the spiked faecal samples<sup>81</sup>. The  
679 MCDA-LFB has demonstrated the same sensitivity as the *mcr-1* LAMP, which is more  
680 sensitive than the conventional PCR. Further, the MCDA-LFB has demonstrated a shorter  
681 reaction time<sup>77,81</sup>.

### 682 ***Recombinase polymerase amplification (RPA)***

683 The rapid detection of *mcr-1*, using a RPA, has been described<sup>82</sup>. RPA is a novel isothermal  
684 amplification method, which can be performed in no more than 30 minutes at body  
685 temperature without the need for thermal cycling instruments<sup>82</sup>. This study used basic RPA  
686 (B-RPA) and RPA with lateral flow (LF-RPA) on 23 genomic DNA extracted from 20 *mcr-1*  
687 positive and three *mcr-1*-negative *Enterobacteriales*<sup>82</sup>. The primers for the B-RPA assay were  
688 designed by Clone Manager 8 and validated on three *mcr-1* positive and one *mcr-1* negative  
689 DNA samples<sup>82</sup>. The B-RPA was based on the TwistAmp Basic kit reaction system, which  
690 was incubated at room temperature for 30 min, after which the amplicons were extracted by  
691 phenol/chloroform solution or purified using an amplicon purification kit<sup>82</sup>. The LF-RPA  
692 reaction required primers and a probe, which were labelled with biotin and fluorescence<sup>82</sup>.  
693 The LF-RPA was based on TwistAmp Nfo kit reaction system, which was incubated as  
694 described for the B-RPA<sup>82</sup>. The amplification products for the LF-RPA were diluted at 1:50  
695 with running buffer, after which a downstream operation was carried out<sup>82</sup>.

696 The results for the B-RPA assay were read by agarose gel electrophoresis, whereas the results  
697 for the LF-RPA assay were visually read using Hybridetect 2T dipsticks<sup>82</sup>. A positive *mcr-1*  
698 detection by LF-RPA was demonstrated by two purple bands at the test line and the quality  
699 control line<sup>82</sup>. Both assays detected the *mcr-1* positive and *mcr-1* negative DNA samples  
700 accordingly; therefore, both assays are equally suitable for detecting *mcr-1* genes<sup>82</sup>.

### 701 ***Conventional & real-time PCR and Whole genome sequencing***

702 The presence or absence of *mcr*-genes is determinable by PCR assays and whole-genome  
703 sequencing (WGS) as standard <sup>76</sup>. Whilst WGS is able to characterize the mechanism of  
704 resistance and determine the molecular evolutionary trajectory of colistin-resistant isolates,  
705 PCR is only able to characterize resistance genes <sup>83, 84</sup>. However, WGS technology is limited  
706 in settings that lack adequate resources and therefore PCR assays are widely adopted for  
707 detecting *mcr*-genes <sup>75, 85</sup>.

708 Nijhuis *et al* (2016) were the first to design a real-time PCR assay for detecting *mcr-1* from  
709 clinical isolates using self-designed primers and probes. The assay was validated on 26 *mcr-1*  
710 positive *E. coli* isolates, where the presence of *mcr-1* was detected in all 26 isolates <sup>86</sup>.  
711 Additionally, the assay was evaluated on spiked stool samples and the efficiency of the PCR  
712 was 102.6% and the LOD was 3-30 cfu/reaction <sup>86</sup>. However, *mcr-1* genes were not detected  
713 in other colistin-resistant strains *i.e.*, *Klebsiella*, *Enterobacter*, *Pseudomonas*, *Acinetobacter*  
714 *etc.*

715 A multiplex PCR (M-PCR) assay for the simultaneous detection of *mcr-1* and carbapenem-  
716 resistant genes, *bla*<sub>KPC</sub>, *bla*<sub>NDM</sub>, *bla*<sub>IMP</sub>, *bla*<sub>OXA-48-like</sub>, was described <sup>87</sup>. The assay was  
717 validated on reference strains including *E. coli* A434-59, which contains *mcr-1* and *bla*<sub>NDM-1</sub>  
718 <sup>87</sup>. Evaluation of the M-PCR on 127 carbapenem-resistant, eight *mcr-1*-positive and 62  
719 carbapenem-susceptible *Enterobacteriales* found the assay to be 100% sensitive and specific  
720 <sup>87</sup>.

721 Additionally, three studies designed M-PCR assays to detect *mcr-1* to *mcr-5* genes <sup>4, 85, 88</sup>.  
722 The assay designed by Rebelo *et al* (2018) allowed for the simultaneous detection of *mcr*  
723 genes and their variants in bovine and porcine isolates <sup>85</sup>. This study did not use internal  
724 amplification controls as they were incompatible with DreamTaq Green PCR Master Mix <sup>85</sup>.  
725 The master mix contains DNA polymerase synthesized in *E. coli* and thus would produce  
726 amplicons if 16S rRNA primers are used <sup>85</sup>.

727 However, Lescat *et al* (2018) designed a more rapid (<2 hours) M-PCR assay that was  
728 compatible with internal controls. Recently, Joussett *et al* (2019) designed and evaluated an  
729 M-PCR assay on 50 *E. coli*, 41 *K. pneumoniae* and 12 *Salmonella enterica* isolates (from  
730 which a total of 40 were MCR-producers), which was 100% accurate in detecting *mcr*-  
731 positive isolates. The assay was additionally performed on 82 *Aeromonas* spp. and 10  
732 *Shewanella* spp. that were previously described as potential originators of *mcr-3* and *mcr-4*,  
733 respectively <sup>4</sup>. None of the *Aeromonas* spp. were *mcr*-positive, although two *Shewanella* spp.,

734 *S. bicestrii* JAB-1 strain and *S. woody* S539 with MICs of 0.25mg/L and <0.12 mg/L  
735 respectively, were *mcr-4* positive <sup>4</sup>. However, cloning *S. bicestrii* JAB-1 genes into *E. coli*  
736 TOP10 resulted in an *mcr-4* positive outcome by the PCR assay with a colistin MIC of 4  
737 mg/L <sup>4</sup>.

738 Borowiak *et al* (2020) described the detection of *mcr-1* to *mcr-9* in colistin resistant  
739 *Salmonella enterica* isolates using an M-PCR (*mcr-1* to *mcr-5*) designed by Rebello *et al*  
740 (2018) and a newly designed M-PCR assay (*mcr-6* to *mcr-9*). The assay was performed on  
741 407 colistin-resistant *S. enterica* isolates from animals, animal feed, food and the environment  
742 <sup>89</sup>. Two hundred and fifty-four of the isolates had *mcr* genes. Moreover, the assay detected  
743 *mcr-9* in isolates carrying *mcr-1* <sup>89</sup>. However, two separate frameshift mutations of *mcr-9*  
744 were shown to have occurred in the respective isolates as demonstrated by WGS analysis; the  
745 mutations are believed to have contributed to non-functional MCR-9 proteins <sup>89</sup>.

746 Two studies have described methods for broth enrichment of colistin-resistant *E. coli*  
747 followed by real-time PCR to detect *mcr*-genes <sup>90, 91</sup>. Chalmers *et al* (2018) were the first to  
748 describe a SYBR Green-based real-time PCR method for *mcr-1* and *mcr-2* following  
749 enrichment with *E. coli* (EC) broth containing colistin (1µg/mL). All the porcine faecal and  
750 chicken caecal samples were screened by real-time PCR after 16h of culture in EC broth <sup>91</sup>.  
751 However, none of the *mcr-1* and *mcr-2* genes were detected by PCR in any of the samples  
752 after 16h of enrichment <sup>91</sup>. As well, the method described by Chandler *et al* (2020) for  
753 detecting *mcr-1* included enrichment using EC broth containing colistin (1µg/mL) and  
754 vancomycin (8µg/mL). The method was evaluated on 100 feral swine faecal samples, which  
755 were inoculated with one of five different *mcr-1* positive *E. coli* strains <sup>90</sup>. The bacteria was  
756 inoculated at concentrations ranging between 0.1-9.99 CFU/g, 10-49.99 CFU/g, 50-99 CFU/g,  
757 100-149 CFU/g and 200-2,200 CFU/g from which *mcr-1* was detected with 32%, 72%, 88%,  
758 95%, and 98% accuracy by real-time PCR, respectively <sup>90</sup>.

759 Four SYBR Green-based real-time PCR assays have been developed for *mcr-1*, *mcr-2*, *mcr-3*,  
760 *mcr-4*, and *mcr-5* detection <sup>92-95</sup>. Bontron *et al* (2016) designed a SYBR Green-based real-  
761 time PCR assay for detection of *mcr-1* from cultured bacteria and stools. The assay was  
762 validated on 20 *Enterobacterales*, where it was found to accurately detect the presence or  
763 absence of *mcr-1* at a LOD of 10<sup>2</sup> cultured bacteria <sup>93</sup>. Furthermore, Dona *et al* (2017)  
764 described a SYBR Green real-time PCR assay to also detect *mcr-1* from human faecal  
765 samples. However, in this study, 20µg of the stool samples were enriched overnight in 10mL  
766 LB broth containing 2µg/mL colistin and plated on four selective agar plates prior to DNA



767 extraction<sup>95</sup>. The real-time PCR accurately identified *mcr-1* harbouring *E. coli* isolates with  
768 an LOD of 10<sup>1</sup> and PCR efficiency of ca. 106%<sup>95</sup>.

769 Li *et al* (2017) also designed a multiplex SYBR Green-based real-time PCR assay for *mcr-1*,  
770 *mcr-2* and *mcr-3* detection. The assay was validated on 25 isolates including *mcr-1* positive  
771 and *mcr-3* positive strains; the *mcr-2* gene was synthesized in the study due to a lack of *mcr-*  
772 2-positive isolates<sup>94</sup>. Although the *mcr* genes were detected with 100% accuracy with a LOD  
773 of 10<sup>2</sup>, *mcr-2* was not validated on cultured bacteria<sup>94</sup>. However, in this study all three *mcr*  
774 genes could not be simultaneously detected in one reaction unlike when the Taqman probe  
775 was used<sup>94</sup>. A more recent study evaluated the SYBR Green-based real-time PCR method  
776 proposed by Li *et al* (2017) in detecting and quantifying *mcr-1* to *mcr-3* as well as newly  
777 designed assays for *mcr-4* and *mcr-5*<sup>92</sup>. The optimized *mcr-1* to *mcr-5* PCR assays were  
778 validated on bacterial isolates<sup>92</sup>. The study found that SYBR Green real-time PCR, followed  
779 by melting curve analysis, was more efficient in detecting and quantifying *mcr-1* to *mcr-5*  
780 genes in both bacterial isolates<sup>92</sup>. The described assays detected all five *mcr* genes with a  
781 lower limit of 10<sup>2</sup>. Moreover, the assays enabled screening of five individual samples in a  
782 single reaction<sup>92</sup>.

783 The parallel detection of *mcr-1*, *mcr-2* and *mcr-8* by real-time PCR using Taqman® probes  
784 has been described<sup>96-98</sup>. Chabou *et al* (2016) designed two quantitative real-time PCR assays  
785 with TaqMan® probes for the rapid detection of *mcr-1* gene. Primers and probes were  
786 designed to develop the two PCR assays, designated PE1 and PE2<sup>96</sup>. The assays were  
787 evaluated on 100 bacterial isolates (18 of which were colistin resistant) and 833 broiler faecal  
788 samples<sup>96</sup>. The sensitivity and specificity of both assays were 100%, with a calibration curve  
789 that was linear from 10<sup>1</sup> to 10<sup>8</sup>. However, the PE1 assay was recommended for initial  
790 screening of *mcr-1* followed by PE2 assay for confirming the results<sup>96</sup>.

791 Daniels *et al* (2017) developed a multiplexed real-time PCR with TaqMan® probes to detect  
792 *mcr-1* and *mcr-2*. The assay was validated on 25 bacterial isolates, some of which were *mcr-*  
793 positive<sup>98</sup>. The sensitivity and specificity of the assay was 100%, being able to detect *mcr-1*  
794 and *mcr-2* from dilutions containing 8.5 × 10<sup>3</sup> and 7.7 × 10<sup>3</sup> cfu/mL respectively<sup>98</sup>. A  
795 specific real-time PCR assay using TaqMan probes to identify *mcr-8* was designed for the  
796 first time by Nabti *et al* (2020). The specificity and sensitivity of the assay were evaluated on  
797 290 bacterial isolates from clinical samples and 250 metagenomic DNA from human stools<sup>97</sup>.  
798 The PCR assay accurately detected *mcr-8* from the one positive *K. pneumoniae* isolate with  
799 an overall efficiency of 92.64% and a limit of detection of 55 CFU/mL<sup>97</sup>.

#### 800 4. Conclusion

801 The rapid dissemination of colistin resistance, mediated by chromosomal mutations and *mcr*-  
802 genes, poses a threat to public and veterinary health as colistin is one of the last-line  
803 antibiotics. It is important to establish a simple, rapid, and cost-effective diagnostic method  
804 that will not discriminate against the mechanism of colistin resistance as well as take into  
805 consideration hetero-resistant isolates. Among the available diagnostic assays, the Rapid  
806 Resapolymyxin NP test is a promising initial screening method as it can be performed in-  
807 house, therefore making it relatively cheap; it is easy to perform and it is not limited to  
808 glucose-fermenting colistin-resistant Gram-negative bacteria. Other colorimetric screening  
809 methods such as ASAT, Rapid Polymyxin NP, Rapid Polymyxin *Acinetobacter*, and Rapid  
810 Polymyxin *Pseudomonas* are species-specific and cannot be used for general screening in  
811 high-capacity clinical laboratories.

812 Likewise, agar-based methods are cheap and can be used as initial screening tools in poorer  
813 settings, although most of the agar-based assays fail to detect isolates with hetero-resistance.  
814 They also have a longer TAT of 24 hours. Should there be a need to use agar-based assays,  
815 CHROMagar COL-APSE was designed to detect and differentiate all colistin-resistant  
816 isolates, although it might be relatively expensive than Superpolymyxin and the LBJMR  
817 medium, which can be performed in-house. However, the LBJMR medium was found to  
818 detect hetero-resistance better than Superpolymyxin. ChromID® Colistin R and Luria-Bertani  
819 (LB) media can only be used to screen for *Enterobacterales*.

820 MIC determiners could also be used for initial screening in highly resourced laboratories,  
821 although they relatively require a higher skill than the agar-based tests and the biochemical  
822 colorimetric tests. The non-automated MIC strips *i.e.*, UMIC, MMS, and ComASP are  
823 cheaper than automated MIC determiners *i.e.*, Microscan, Sensititre, and BD Phoenix.  
824 However, automated MIC determiners could be available in most well-resourced clinical  
825 laboratories as they are generally used for AST. Non-automated MIC strips are cheaper,  
826 require less skill, and recommendable for less-resourced laboratories.

827 A second screening can be performed to mainly detect *mcr*-production using chelator-based  
828 phenotypic assays, which are more suitable although most are subjected to >16h incubation.  
829 Moreover, the Lateral Flow assay that detects MCR-1/-2 production could be used for rapid  
830 detection. Molecular methods could be considered for the detection of *mcr*-genes in well-  
831 resourced clinical microbiology laboratories. Particularly, the LAMP assays could be used as

832 they were found to be more sensitive than PCR methods. More so, LAMP requires less  
833 equipment and has a shorter TAT than PCR and WGS methods.

834 **Funding:** none

835 **Acknowledgements:** none. We hereby regretfully report the death of our colleague Professor  
836 Nontombi Mbelle, who died during the submission of this article. This work is dedicated to  
837 her memory.

838 **Transparency declaration:** Authors have no conflict of interest to declare.

## 839 5. References

- 840 1. Vasoo, S. Susceptibility Testing for the Polymyxins: Two Steps Back, Three Steps Forward? *Journal of clinical*  
841 *microbiology* **55**, 2573--2582 (2017).
- 842 2. Teo, J.W., Octavia, S., Cheng, J.W. & Lin, R.T., Vol. 90 67--69 (2018).
- 843 3. Li, B. *et al.* An enzyme-free homogenous electrochemical assay for sensitive detection of the plasmid-mediated  
844 colistin resistance gene *mcr-1*. *Analytical and bioanalytical chemistry* **410**, 4885--4893 (2018).
- 845 4. Jousset, A.B. *et al.* Development and validation of a multiplex polymerase chain reaction assay for detection of  
846 the five families of plasmid-encoded colistin resistance. *Int J Antimicrob Agents* **53**, 302-309 (2019).
- 847 5. Osei Sekyere, J., Sephofane, A.K. & Mbelle, N.M. Comparative Evaluation of CHROMagar COL-APSE, MicroScan  
848 Walkaway, ComASPColistin, and Colistin MAC Test in Detecting Colistin-resistant Gram-Negative Bacteria.  
849 *medRxiv*, 2019.2012.2017.19015156 (2020).
- 850 6. Liu, Y.-Y. *et al.* Emergence of plasmid-mediated colistin resistance mechanism MCR-1 in animals and human  
851 beings in China: a microbiological and molecular biological study. *The Lancet infectious diseases* **16**, 161-168  
852 (2016).
- 853 7. Dortet, L. *et al.* Optimization of the MALDIx test for the rapid identification of colistin resistance in *Klebsiella*  
854 *pneumoniae* using MALDI-TOF MS. *J Antimicrob Chemother* **75**, 110-116 (2020).
- 855 8. Bialvaei, A.Z. & Samadi Kafil, H. Colistin, mechanisms and prevalence of resistance. *Current Medical Research and*  
856 *Opinion* **31**, 707-721 (2015).
- 857 9. Sun, J., Zhang, H., Liu, Y.-H. & Feng, Y. Towards Understanding MCR-like Colistin Resistance. *Trends in*  
858 *Microbiology* **26**, 794-808 (2018).
- 859 10. Poirel, L., Jayol, A. & Nordmann, P. Polymyxins: Antibacterial Activity, Susceptibility Testing, and Resistance  
860 Mechanisms Encoded by Plasmids or Chromosomes. *Clinical microbiology reviews* **30**, 557-596 (2017).
- 861 11. Nordmann, P., Jayol, A. & Poirel, L. Rapid Detection of Polymyxin Resistance in Enterobacteriaceae. *Emerging*  
862 *infectious diseases* **22**, 1038--1043 (2016).
- 863 12. Osei Sekyere, J. *mcr* colistin resistance gene: a systematic review of current diagnostics and detection methods.  
864 *Microbiologyopen* **8**, e00682 (2019).
- 865 13. Rodriguez, C.H. *et al.* In-house rapid colorimetric method for detection of colistin resistance in Enterobacterales:  
866 A significant impact on resistance rates. *Journal of chemotherapy (Florence, Italy)* **31**, 432--435 (2019).
- 867 14. Xavier, B.B. *et al.* Identification of a novel plasmid-mediated colistin-resistance gene, *mcr-2*, in *Escherichia coli*,  
868 Belgium, June 2016. *Euro surveillance : bulletin Europeen sur les maladies transmissibles = European*  
869 *communicable disease bulletin* **21** (2016).
- 870 15. AbuOun, M. *et al.* *mcr-1* and *mcr-2* variant genes identified in *Moraxella* species isolated from pigs in Great Britain  
871 from 2014 to 2015. *The Journal of antimicrobial chemotherapy* **72**, 2745-2749 (2017).
- 872 16. Borowiak, M. *et al.* Identification of a novel transposon-associated phosphoethanolamine transferase gene, *mcr-*  
873 *5*, conferring colistin resistance in d-tartrate fermenting *Salmonella enterica* subsp. *enterica* serovar Paratyphi B.  
874 *The Journal of antimicrobial chemotherapy* **72**, 3317-3324 (2017).

- 875 17. Carattoli, A. *et al.* Novel plasmid-mediated colistin resistance *mcr-4* gene in *Salmonella* and *Escherichia coli*, Italy  
876 2013, Spain and Belgium, 2015 to 2016. *Euro surveillance : bulletin Europeen sur les maladies transmissibles =*  
877 *European communicable disease bulletin* **22** (2017).
- 878 18. Carroll, L.M. *et al.* Identification of Novel Mobilized Colistin Resistance Gene *mcr-9* in a Multidrug-Resistant,  
879 Colistin-Susceptible *Salmonella enterica* Serotype Typhimurium Isolate. *mBio* **10** (2019).
- 880 19. Wang, X. *et al.* Emergence of a novel mobile colistin resistance gene, *mcr-8*, in NDM-producing *Klebsiella*  
881 *pneumoniae*. *Emerging microbes & infections* **7**, 122 (2018).
- 882 20. Wenjuan, Y. *et al.* in *mBio*, Vol. 8 (2017).
- 883 21. Yong-Qiang, Y. *et al.* Novel plasmid-mediated colistin resistance gene *mcr-7.1* in *Klebsiella pneumoniae*. *Journal of*  
884 *Antimicrobial Chemotherapy (JAC)* **73** (2018).
- 885 22. Furniss, R.C.D. *et al.* Detection of Colistin Resistance in *Escherichia coli* by Use of the MALDI Biotyper Sirius Mass  
886 Spectrometry System. *Journal of clinical microbiology* **57** (2019).
- 887 23. Bardet, L. & Rolain, J.-M. Development of New Tools to Detect Colistin-Resistance among Enterobacteriaceae  
888 Strains. *Can J Infect Dis Med Microbiol* **2018**, 3095249-3095249 (2018).
- 889 24. Furniss, R.C.D. *et al.* Detection of Colistin Resistance in *Escherichia coli* by Use of the MALDI Biotyper Sirius Mass  
890 Spectrometry System. *Journal of Clinical Microbiology* **57**, e01427-01419 (2019).
- 892 25. Chew, K.L., La, M.V., Lin, R.T.P. & Teo, J.W.P. Colistin and Polymyxin B Susceptibility Testing for Carbapenem-  
893 Resistant and *mcr*-Positive Enterobacteriaceae: Comparison of Sensititre, MicroScan, Vitek 2, and Etest with Broth  
894 Microdilution. *J Clin Microbiol* **55**, 2609-2616 (2017).
- 895 26. Jayol, A., Nordmann, P., Andre, C., Poirel, L. & Dubois, V. Evaluation of three broth microdilution systems to  
896 determine colistin susceptibility of Gram-negative bacilli. *The Journal of antimicrobial chemotherapy* **73**, 1272--  
897 1278 (2018).
- 898 27. Simar, S., Sibley, D., Ashcraft, D. & Pankey, G. Colistin and Polymyxin B Minimal Inhibitory Concentrations  
899 Determined by Etest Found Unreliable for Gram-Negative Bacilli. *The Ochsner journal* **17**, 239--242 (2017).
- 900 28. Haeili, M., Kafshdouz, M., Pishnian, Z., Feizabadi, M.M. & Martinez-Martinez, L. Comparison of susceptibility  
901 testing methods for determining the activity of colistin against Gram-negative bacilli of clinical origin. *Journal of*  
902 *medical microbiology* **68**, 60--66 (2019).
- 903 29. Lutgring, J.D. *et al.* Evaluation of the MicroScan Colistin Well and Gradient Diffusion Strips for Colistin  
904 Susceptibility Testing in Enterobacteriaceae. *Journal of Clinical Microbiology* **57**, e01866-  
905 01818 (2019).
- 906 30. Matuschek, E., Åhman, J., Webster, C. & Kahlmeter, G. Antimicrobial susceptibility testing of colistin—evaluation of  
907 seven commercial MIC products against standard broth microdilution for *Escherichia coli*, *Klebsiella pneumoniae*,  
908 *Pseudomonas aeruginosa*, and *Acinetobacter* spp. *Clinical Microbiology and Infection* **24**, 865-870 (2018).
- 909 31. Mitton, B., Kingsburgh, C., Kock, M., Mbelle, N. & Strydom, K. Evaluation of an In-House Colistin NP Test for Use in  
910 Resource-Limited Settings. *Journal of clinical microbiology* **57**, e00501-00519 (2019).
- 911 32. Jayol, A. *et al.* *Hafnia*, an enterobacterial genus naturally resistant to colistin revealed by three susceptibility  
912 testing methods. *The Journal of antimicrobial chemotherapy* **72**, 2507--2511 (2017).
- 913 33. Bardet, L., Okdah, L., Le Page, S., Baron, S.A. & Rolain, J.M. Comparative evaluation of the UMIC Colistine kit to  
914 assess MIC of colistin of gram-negative rods. *BMC Microbiol* **19**, 60 (2019).
- 915 34. Carretto, E. *et al.* Clinical Validation of SensiTest Colistin, a Broth Microdilution-Based Method To Evaluate Colistin  
916 MICs. *Journal of Clinical Microbiology* **56**, e01523-01517 (2018).
- 917 35. Hong, J.S. *et al.* Evaluation of the BD Phoenix M50 Automated Microbiology System for Antimicrobial  
918 Susceptibility Testing with Clinical Isolates in Korea. *Microb Drug Resist* **25**, 1142-1148 (2019).
- 919 36. Malli, E. *et al.* Evaluation of rapid polymyxin NP test to detect colistin-resistant *Klebsiella pneumoniae* isolated in a  
920 tertiary Greek hospital. *Journal of microbiological methods* **153**, 35--39 (2018).
- 921 37. Jayol, A., Nordmann, P., Lehours, P., Poirel, L. & Dubois, V. Comparison of methods for detection of plasmid-  
922 mediated and chromosomally encoded colistin resistance in Enterobacteriaceae. *Clinical Microbiology and*  
923 *Infection* **24**, 175-179 (2018).
- 924 38. Rodriguez, C.H. *et al.* Discrepancies in susceptibility testing to colistin in *Acinetobacter baumannii*: The influence  
925 of slow growth and heteroresistance. *International journal of antimicrobial agents* **54**, 587--591 (2019).

- 926 39. Poirel, L. *et al.* Rapid Polymyxin NP test for the detection of polymyxin resistance mediated by the *mcr-1/mcr-2*  
927 genes. *Diagnostic microbiology and infectious disease* **90**, 7--10 (2018).
- 928 40. Yainoy, S. *et al.* Evaluation of the Rapid Polymyxin NP test for detection of colistin susceptibility in  
929 Enterobacteriaceae isolated from Thai patients. *Diagn Microbiol Infect Dis* **92**, 102-106 (2018).
- 930 41. Jayol, A. *et al.* Evaluation of the Rapid Polymyxin NP test and its industrial version for the detection of polymyxin-  
931 resistant Enterobacteriaceae. *Diagn Microbiol Infect Dis* **92**, 90-94 (2018).
- 932 42. Jayol, A., Dubois, V., Poirel, L. & Nordmann, P. Rapid Detection of Polymyxin-Resistant Enterobacteriaceae from  
933 Blood Cultures. *Journal of clinical microbiology* **54**, 2273--2277 (2016).
- 934 43. Malli, E., Papagiannitsis, C.C., Xitsas, S., Tsilipounidaki, K. & Petinaki, E. Implementation of the Rapid Polymyxin™  
935 NP test directly to positive blood cultures bottles. *Diagnostic Microbiology and Infectious Disease* **95**, 114889  
936 (2019).
- 937 44. Przybysz, S.M., Correa-Martinez, C., Kock, R., Becker, K. & Schaumburg, F. SuperPolymyxin Medium for the  
938 Screening of Colistin-Resistant Gram-Negative Bacteria in Stool Samples. *Frontiers in microbiology* **9**, 2809 (2018).
- 939 45. Dalmolin, T.V. *et al.* Detection of Enterobacterales resistant to polymyxins using Rapid Polymyxins NP test. *Braz J*  
940 *Microbiol* **50**, 425-428 (2019).
- 941 46. Malli, E. *et al.* Implementation of the Rapid Polymyxin Acinetobacter Test to Detect Colistin-Resistant  
942 Acinetobacter baumannii. *Microbial drug resistance (Larchmont, N.Y.)* (2019).
- 943 47. Lescat, M., Poirel, L., Jayol, A. & Nordmann, P. Performances of the Rapid Polymyxin Acinetobacter and  
944 Pseudomonas Tests for Colistin Susceptibility Testing. *Microb Drug Resist* **25**, 520-523 (2019).
- 945 48. Sadek, M., Tinguely, C., Poirel, L. & Nordmann, P. Rapid Polymyxin/Pseudomonas NP test for rapid detection of  
946 polymyxin susceptibility/resistance in Pseudomonas aeruginosa. *Eur J Clin Microbiol Infect Dis* **39**, 1657-1662  
947 (2020).
- 948 49. Lescat, M., Poirel, L., Tinguely, C. & Nordmann, P. A Resazurin Reduction-Based Assay for Rapid Detection of  
949 Polymyxin Resistance in Acinetobacter baumannii and Pseudomonas aeruginosa. *J Clin Microbiol* **57** (2019).
- 950 50. Jia, H. *et al.* Evaluation of resazurin-based assay for rapid detection of polymyxin-resistant gram-negative bacteria.  
951 *BMC Microbiol* **20**, 7 (2020).
- 952 51. Germ, J. *et al.* Evaluation of resazurin-based rapid test to detect colistin resistance in Acinetobacter baumannii  
953 isolates. *Eur J Clin Microbiol Infect Dis* **38**, 2159-2162 (2019).
- 954 52. Esposito, F. *et al.* Detection of Colistin-Resistant MCR-1-Positive Escherichia coli by Use of Assays Based on  
955 Inhibition by EDTA and Zeta Potential. *J Clin Microbiol* **55**, 3454-3465 (2017).
- 956 53. Yauri Condor, K., Gonzales Escalante, E., Di Conza, J. & Gutkind, G. Detection of plasmid-mediated colistin  
957 resistance by colistin pre-diffusion and inhibition with EDTA test (CPD-E) in Enterobactereaceae. *Journal of*  
958 *Microbiological Methods* **167** (2019).
- 959 54. Clément, M. *et al.* The EDTA-based disk-combination tests are unreliable for the detection of MCR-mediated  
960 colistin-resistance in Enterobacteriaceae. *Journal of Microbiological Methods* **153**, 31-34 (2018).
- 961 55. Budel, T. *et al.* Evaluation of EDTA- and DPA-Based Microdilution Phenotypic Tests for the Detection of MCR-  
962 Mediated Colistin Resistance in Enterobacteriaceae. *Microb Drug Resist* **25**, 494-500 (2019).
- 963 56. Simner, P.J. *et al.* Two-Site Evaluation of the Colistin Broth Disk Elution Test To Determine Colistin & In  
964 Vitro Activity against Gram-Negative Bacilli. *Journal of Clinical Microbiology* **57**, e01163-01118 (2019).
- 965 57. Dalmolin, T.V. *et al.* Elution methods to evaluate colistin susceptibility of Gram-negative rods. *Diagnostic*  
966 *Microbiology and Infectious Disease* **96**, 114910 (2020).
- 967 58. Fenwick, A.J. *et al.* Evaluation of the NG-Test MCR-1 Lateral Flow Assay and EDTA-Colistin Broth Disk Elution  
968 Methods To Detect Plasmid-Mediated Colistin Resistance Among Gram-Negative Bacterial Isolates. *Journal of*  
969 *Clinical Microbiology, JCM.01823-01819* (2020).
- 970 59. Bell, D.T. *et al.* A Novel Phenotypic Method To Screen for Plasmid-Mediated Colistin Resistance among  
971 & Enterobacterales &. *Journal of Clinical Microbiology* **57**, e00040-00019 (2019).
- 972 60. Coppi, M. *et al.* A simple phenotypic method for screening of MCR-1-mediated colistin resistance. *Clinical*  
973 *microbiology and infection : the official publication of the European Society of Clinical Microbiology and Infectious*  
974 *Diseases* **24**, 1-201 (2018).
- 975 61. Jouy, E. *et al.* Improvement in routine detection of colistin resistance in E. coli isolated in veterinary diagnostic  
976 laboratories. *Journal of microbiological methods* **132**, 125--127 (2017).

- 977 62. Volland, H. *et al.* Development and Multicentric Validation of a Lateral Flow Immunoassay for Rapid Detection of  
978 MCR-1-Producing Enterobacteriaceae. *Journal of clinical microbiology* **57** (2019).
- 979 63. Abdul Momin, M.H.F. *et al.* CHROMagar COL-APSE: a selective bacterial culture medium for the isolation and  
980 differentiation of colistin-resistant Gram-negative pathogens. *J Med Microbiol* **66**, 1554-1561 (2017).
- 981 64. Girlich, D., Naas, T. & Dortet, L. Comparison of the Superpolymyxin and ChromID Colistin R Screening Media for  
982 the Detection of Colistin-Resistant Enterobacteriaceae from Spiked Rectal Swabs. *Antimicrob Agents Chemother*  
983 **63** (2019).
- 984 65. Nordmann, P., Jayol, A. & Poirel, L. A Universal Culture Medium for Screening Polymyxin-Resistant Gram-Negative  
985 Isolates. *Journal of clinical microbiology* **54**, 1395--1399 (2016).
- 986 66. Bardet, L., Page, S.L., Leangapichart, T. & Rolain, J.-M. LBJMR medium: a new polyvalent culture medium for  
987 isolating and selecting vancomycin and colistin-resistant bacteria. *BMC microbiology* **17**, 220 (2017).
- 988 67. Jayol, A., Poirel, L., Andre, C., Dubois, V. & Nordmann, P. Detection of colistin-resistant Gram-negative rods by  
989 using the SuperPolymyxin medium. *Diagn Microbiol Infect Dis* **92**, 95-101 (2018).
- 990 68. van Hout, D. *et al.* The added value of the selective SuperPolymyxin™ medium in detecting rectal carriage of  
991 Gram-negative bacteria with acquired colistin resistance in intensive care unit patients receiving selective  
992 digestive decontamination. *Eur J Clin Microbiol Infect Dis* **39**, 265-271 (2020).
- 993 69. Germ, J. & Seme, K.a. Evaluation of a novel epidemiological screening approach for detection of colistin resistant  
994 human Enterobacteriaceae isolates using a selective SuperPolymyxin medium. *Journal of microbiological methods*  
995 **160**, 117--123 (2019).
- 996 70. Thiry, D. *et al.* Assessment of two selective agar media to isolate colistin-resistant bovine Escherichia coli:  
997 Correlation with minimal inhibitory concentration and presence of mcr genes. *Journal of Microbiological Methods*  
998 **159**, 174--178 (2019).
- 999 71. García-Fernández, S. *et al.* Performance of CHROMID® Colistin R agar, a new chromogenic medium for screening  
1000 of colistin-resistant Enterobacteriales. *Diagnostic Microbiology and Infectious Disease* **93**, 1-4 (2019).
- 1001 72. Turbett, S.E. *et al.* Evaluation of a Screening Method for the Detection of Colistin-Resistant Enterobacteriaceae in  
1002 Stool. *Open forum infectious diseases* **6**, ofz211 (2019).
- 1003 73. Girlich, D. *et al.* Evaluation of the Amplidiag CarbaR+MCR Kit for Accurate Detection of Carbapenemase-Producing  
1004 and Colistin-Resistant Bacteria. *Journal of Clinical Microbiology* **57**, e01800-01818 (2019).
- 1005 74. Meunier, D., Woodford, N. & Hopkins, K.L. Evaluation of the AusDiagnostics MT CRE EU assay for the detection of  
1006 carbapenemase genes and transferable colistin resistance determinants mcr-1/-2 in MDR Gram-negative bacteria.  
1007 *The Journal of antimicrobial chemotherapy* **73**, 3355--3358 (2018).
- 1008 75. Zhong, L.-L., Zhou, Q., Tan, C.-Y. & Roberts, A.P.a. Multiplex loop-mediated isothermal amplification (multi-LAMP)  
1009 assay for rapid detection of mcr-1 to mcr-5 in colistin-resistant bacteria. *Infect Drug Resist* **12**, 1877--1887 (2019).
- 1010 76. Imirzalioglu, C. *et al.*, Vol. 61 (2017).
- 1011 77. Zou, D. *et al.* Sensitive and Rapid Detection of the Plasmid-Encoded Colistin-Resistance Gene mcr-1 in  
1012 Enterobacteriaceae Isolates by Loop-Mediated Isothermal Amplification. *Frontiers in microbiology* **8**, 2356 (2017).
- 1013 78. Giordano, C. & Barnini, S. Rapid detection of colistin-resistant *Klebsiella pneumoniae* using MALDI-TOF MS peak-  
1014 based assay. *J Microbiol Methods* **155**, 27-33 (2018).
- 1015 79. Dortet, L. *et al.* Rapid detection of colistin resistance in *Acinetobacter baumannii* using MALDI-TOF-based  
1016 lipidomics on intact bacteria. *Scientific reports* **8**, 16910 (2018).
- 1017 80. Bernasconi, O.J. *et al.*, Vol. 55 3138--3141 (2017).
- 1018 81. Gong, L. *et al.* Multiple Cross Displacement Amplification Coupled With Gold Nanoparticles-Based Lateral Flow  
1019 Biosensor for Detection of the Mobilized Colistin Resistance Gene mcr-1. *Frontiers in cellular and infection*  
1020 *microbiology* **9**, 226 (2019).
- 1021 82. Xu, J., Wang, X., Yang, L., Kan, B. & Lu, X. Rapid detection of mcr-1 by recombinase polymerase amplification.  
1022 *Journal of medical microbiology* **67**, 1682--1688 (2018).
- 1023 83. Peter, S. *et al.* Whole-genome sequencing enabling the detection of a colistin-resistant hypermutating *Citrobacter*  
1024 *werkmanii* strain harbouring a novel metallo-beta-lactamase VIM-48. *International journal of antimicrobial agents*  
1025 **51**, 867--874 (2018).
- 1026 84. Hua, X. *et al.* Colistin Resistance in *Acinetobacter baumannii* MDR-ZJ06 Revealed by a Multiomics Approach.  
1027 *Frontiers in cellular and infection microbiology* **7**, 45 (2017).

- 1028 85. Rebelo, A.R. *et al.* Multiplex PCR for detection of plasmid-mediated colistin resistance determinants, mcr-1, mcr-  
1029 2, mcr-3, mcr-4 and mcr-5 for surveillance purposes. *Euro surveillance : bulletin Europeen sur les maladies*  
1030 *transmissibles = European communicable disease bulletin* **23** (2018).
- 1031 86. Nijhuis, R. *et al.* Detection of the plasmid-mediated colistin-resistance gene mcr-1 in clinical isolates and stool  
1032 specimens obtained from hospitalized patients using a newly developed real-time PCR assay. *Journal of*  
1033 *Antimicrobial Chemotherapy* **71**, 2344-2346 (2016).
- 1034 87. Hatrongjit, R., Kerdsin, A., Akeda, Y. & Hamada, S. Detection of plasmid-mediated colistin-resistant and  
1035 carbapenem-resistant genes by multiplex PCR. *MethodsX* **5**, 532--536 (2018).
- 1036 88. Lescat, M., Poirel, L. & Nordmann, P. Rapid multiplex polymerase chain reaction for detection of mcr-1 to mcr-5  
1037 genes. *Diagnostic Microbiology and Infectious Disease* **92**, 267-269 (2018).
- 1038 89. Borowiak, M. *et al.* Development of a Novel mcr-6 to mcr-9 Multiplex PCR and Assessment of mcr-1 to mcr-9  
1039 Occurrence in Colistin-Resistant *Salmonella enterica* Isolates From Environment, Feed, Animals and Food (2011–  
1040 2018) in Germany. *Frontiers in Microbiology* **11** (2020).
- 1041 90. Chandler, J.C. *et al.* Validation of a screening method for the detection of colistin-resistant *E. coli* containing mcr-1  
1042 in feral swine feces. *Journal of microbiological methods* **172**, 105892 (2020).
- 1043 91. Chalmers, G. *et al.* A method to detect *Escherichia coli* carrying the colistin-resistance genes mcr-1 and mcr-2  
1044 using a single real-time polymerase chain reaction and its application to chicken cecal and porcine fecal samples.  
1045 *Canadian journal of veterinary research = Revue canadienne de recherche veterinaire* **82**, 312--315 (2018).
- 1046 92. Tolosi, R. *et al.* Rapid detection and quantification of plasmid-mediated colistin resistance genes (mcr-1 to mcr-5)  
1047 by real-time PCR in bacterial and environmental samples. *Journal of Applied Microbiology* **n/a** (2020).
- 1048 93. Bontron, S.v., Poirel, L. & Nordmann, P. Real-time PCR for detection of plasmid-mediated polymyxin resistance  
1049 (mcr-1) from cultured bacteria and stools. *Journal of Antimicrobial Chemotherapy (JAC)* **71** (2016).
- 1050 94. Li, J. *et al.* A Multiplex SYBR Green Real-Time PCR Assay for the Detection of Three Colistin Resistance Genes from  
1051 Cultured Bacteria, Feces, and Environment Samples. *Frontiers in microbiology* **8**, 2078 (2017).
- 1052 95. Dona, V., Bernasconi, O.J., Kasraian, S., Tinguely, R. & Endimiani, A. A SYBR(®) Green-based real-time PCR method  
1053 for improved detection of mcr-1-mediated colistin resistance in human stool samples. *J Glob Antimicrob Resist* **9**,  
1054 57-60 (2017).
- 1055 96. Chabou, S., Leangapichart, T. & Okdah, L.a. Real-time quantitative PCR assay with Taqm®(R) probe for rapid  
1056 detection of MCR-1 plasmid-mediated colistin resistance. *New microbes and new infections* **13**, 71--74 (2016).
- 1057 97. Nabti, L.Z. *et al.* Development of real-time PCR assay allowed describing the first clinical *Klebsiella pneumoniae*  
1058 isolate harboring plasmid-mediated colistin resistance mcr-8 gene in Algeria. *Journal of global antimicrobial*  
1059 *resistance* **20**, 266--271 (2020).
- 1060 98. Daniels, J.B. *et al.* Development and Validation of a Clinical Laboratory Improvement Amendments-Compliant  
1061 Multiplex Real-Time PCR Assay for Detection of mcr Genes. *Microb Drug Resist* **25**, 991-996 (2019).
- 1062
- 1063
- 1064
- 1065
- 1066
- 1067
- 1068
- 1069
- 1070

1071

1072

1073

1074

1075

1076

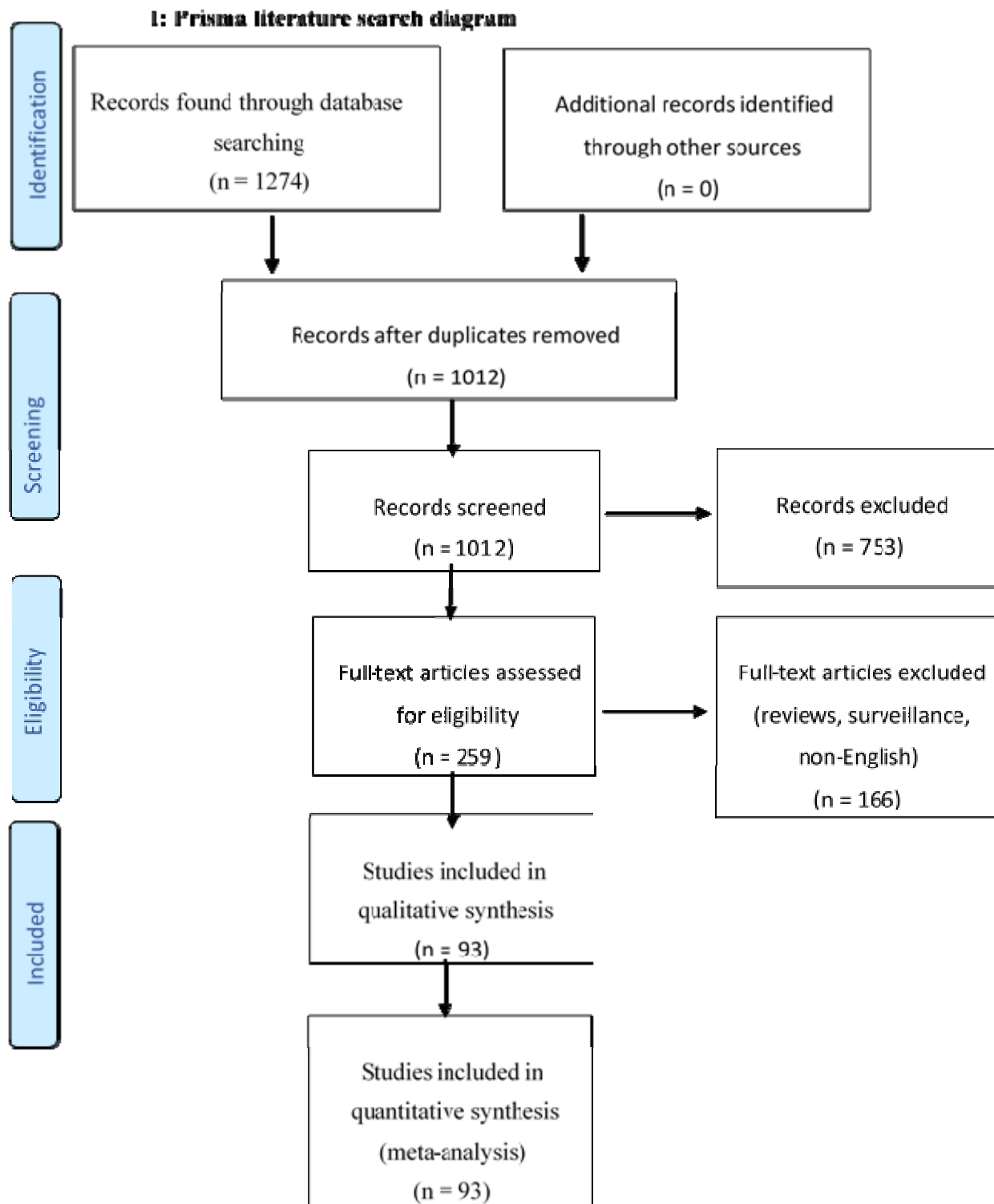
1077

1078

1079

1080





1081

1082 *Figure 1. Literature search strategy and sorting techniques used to obtain articles for inclusion in the systematic*  
1083 *review.*

**Table 1. Comparative diagnostic efficiencies of colistin resistance diagnostics**

Diagnostic	Species (n)	Sensitivity (%)	Specificity (%)	Relative cost	Relative skill required	Turnaround time (hr)	CA (%)	EA (%)	ME (%)	VME (%)	LOD (CFU/ml or reaction)	Reference
Broth Macrodilution (BMAD)	GNB (109)	100	100	Cheap	Low	16-20	100	100	0	0	NS	Haeili <i>et al.</i> , 2019
<b>Diffusion and Agar dilution methods</b>												
Disc diffusion (Rosco, Taastrup, Denmark)	GNB (109)	76.19	96.59	Cheapest	Low	16-24	92.6	NA	3.4	23.8	NS	Haeili <i>et al.</i> , 2019

Disc diffusion (BBL Sensi-Disc, Becton Dickinson, Sparks, MD)	GNB (109)	76.19	100	Cheapest	Low	16-24	95.4	NA	0	23.8	NS	Haeili <i>et al.</i> , 2019
Diagnostic	Species (n)	Sensitivity (%)	Specificity (%)	Relative cost	Relative skill required	Turnaround time (hr)	CA (%)	EA (%)	ME (%)	VME (%)	LOD (CFU/ml or reaction)	References
Disc diffusion	<i>Hafnia</i> (25)	0	100	Cheapest	Low	16-24	0	NA	0	100	NS	Jayol <i>et al.</i> , 2017
Agar dilution	GNB (109)	100	60.23	Cheap	Low	16-20	67.9	23.8	39.77	0	NS	Haeili <i>et al.</i> , 2019
<b>Selective agar-based media</b>												
Superpoly myxin™	<i>Enterobacterales</i> (94,700,239,1,1430,385)	86.8,87.5,95.2,100,88.9	97.5,99.5,95.3,0,81.6	Cheap	Low	24-48	NA	NA	NA	NA	NS	Girlich <i>et al.</i> , 2019; Germ <i>et al.</i> , 2019; Jayol <i>et al.</i> ,

												2018; Przybyś et al., 2018; van Hout et al., 2020
CHROMagar™ APSE	<i>E. coli</i> (158) <i>GNB</i> (89)	96,82.05	97,66.67	Cheap	Low	18-20	NA	NA	NA	NA	NS	Thiry et al., 2019; Osei Sekyere et al., 2020
<b>Diagnostic</b>	<b>Species (n)</b>	<b>Sensitivity (%)</b>	<b>Specificity (%)</b>	<b>Relative cost</b>	<b>Relative skill required</b>	<b>Turnaround time (hr)</b>	<b>CA (%)</b>	<b>EA (%)</b>	<b>ME (%)</b>	<b>VME (%)</b>	<b>LOD (CFU/ml or reaction)</b>	<b>References</b>
CHROMID® Colistin_R	<i>E. coli</i> 158 <i>Enterobacterales</i> (94)	99, 86.8	97,100	Cheap	Low	18-24	NA	NA	NA	NA	NS	Thiry et al., 2019; Girlich et al., 2019;
LB Medium	<i>Enterobacterales</i> (9)	100	100	Cheap	Low	48	NA	NA	NA	NA	10 <sup>2</sup> -10 <sup>3</sup>	Turbett et al., 2019
<b>Chelator and non-chelator-based assays</b>												

Rapid Polymyxin NP (Commercial)	<i>Enterobacterales</i> (132)	100	96.7	Expensive	Low	2-3	NS	NA	3.48	0	NS	Malli <i>et al.</i> , 2019;
Diagnostic	Species (n)	Sensitivity (%)	Specificity (%)	Relative cost	Relative skill required	Turnaround time (hr)	CA (%)	EA (%)	ME (%)	VME (%)	LOD (CFU/ml or reaction)	References
In-house Rapid polymyxin NP	<i>K. pneumoniae</i> (131) <i>Hafnia</i> spp. (25) Enterobacterales (200,339)	99,100,98, 98.21,98.1, 71.1,100	82,100,98, 100,98.2,8 8.6,95.9	Cheapest	Low	2-4	NS	NA	18.18,0,2, 0,0,1.8,7.4, 0	1.02,0,2,1. 79,1.9,10.2 ,3.85	10 <sup>8</sup>	Malli <i>et al.</i> , 2018; Jayol <i>et al.</i> , 2017; Dalmolin <i>et al.</i> , 2019; Jayol <i>et al.</i> , 2016; Mitton <i>et al.</i> , 2019; Przybysz <i>et</i>

													<i>al., 2018; Yaino y et al., 2018</i>
ASAT	<i>Enterobacterales</i> (300)	90.7	100	Cheapest	Low	3	NS	NA	0	10.17	NS	Rodriguez et al., 2019a	
Rapid <i>Acinetobacter</i>	<i>A. baumannii</i> (21)	100,93.3	100,86.8	Expensive	Low	3-4	100	NA	0,	0,	NS	Lescat et al., 2019; Malli et al., 2019b	
<b>Diagnostic</b>	<b>Species (n)</b>	<b>Sensitivity (%)</b>	<b>Specificity (%)</b>	<b>Relative cost</b>	<b>Relative skill required</b>	<b>Turn around time (hr)</b>	<b>CA (%)</b>	<b>EA (%)</b>	<b>ME (%)</b>	<b>VME (%)</b>	<b>LOD (CFU/ml or reaction)</b>	<b>References</b>	
Rapid <i>Pseudomonas</i>	<i>P. aeruginosa</i> (17)	100,100	100,95	Expensive	Low	3-4	100	NA	0,5	0	NS	Lescat et al., 2019; Sadek et al., 2020	
Rapid	<i>A.</i>	93.3,100,1	93.3,100,	Cheap	Low	3-4	95.1,100,	NA	3.7,0,4	1.2,0,0,0,	NS	Germ et al.,	

Resapolymer NP	<i>baumannii</i> (82,43,165)  <i>Enterobacterales</i> (20,32)  <i>P. aeruginosa</i> (49)  Gram-negative bacilli (253)	00,100,100,84	97,100,99,100				cal,99.2,cal		34,0,1.01,0	0,16		2019; Lescat <i>et al.</i> , 2019b; Jia <i>et al.</i> , 2020; Rodriguez <i>et al.</i> , 2019
EDTA-CDT	<i>Enterobacterales</i> (48,92)	12,100	65.2,100	Cheap	Low	18-24	NS,100	NA	NS,0	NS,0	NA	Clément <i>et al.</i> , 2018; Yauri Condor <i>et al.</i> , 2019
EDTA-CMR/BMD	<i>Enterobacterales</i> (92)	93.2	54.2	Cheap	Low	18-24	NS	NS	6.8	45.81	NS	Budel <i>et al.</i> , 2019
<b>Diagnostic</b>	<b>Species (n)</b>	<b>Sensitivity (%)</b>	<b>Specificity (%)</b>	<b>Relative cost</b>	<b>Relative skill required</b>	<b>Turn around time (hr)</b>	<b>CA (%)</b>	<b>EA (%)</b>	<b>ME (%)</b>	<b>VME (%)</b>	<b>LOD (CFU/ml or reaction)</b>	<b>References</b>

Colistin MAC test	<i>Enterobacterales</i> (92) GNB (84)	84.1, 100	100	Cheap	Low	18-24	NA	NA	0	15.9,0	NS	Budel <i>et al.</i> , 2019; Osei Sekyere <i>et al.</i> , 2020
CBDE	GNB (172)	100	97.76	Cheap	Low	16-20	98	99	0	8	NS	Simner <i>et al.</i> , 2019
CBDE+ED TA	<i>Enterobacterales</i> (85)	100	95.8, 94.3	Cheap	Low	16-20	NS	NS	4.1, 5.75	0	NS	Bell <i>et al.</i> , 2019; Fenwick <i>et al.</i> , 2020
CBM	<i>Enterobacterales</i> (68) NF (17)	95.35,87.5	84,66.67	Cheap	Low	16-20	91.18,76.4 7	95.59,82.3 5	16,33.33	4.65,12.5	NS	Dalmolin <i>et al.</i> , 2020
MPT	<i>Enterobacterales</i> (68) Non-fermenters (17)	88.37, 75	80,77.78	Cheap	Low	16-20	85.29,76.4 7	98.53,76.4 7	20,22.22	11.63,25	NS	Dalmolin <i>et al.</i> , 2020



Diagnostic	Species (n)	Sensitivity (%)	Specificity (%)	Relative cost	Relative skill required	Turnaround time (hr)	CA (%)	EA (%)	ME (%)	VME (%)	LOD (CFU/ml or reaction)	References
CSTT	<i>Enterobacterales</i> (68) NF (17)	93.02,62.5	88,100	Cheap	Low	16-20	91.18,82.3 5	NA	12	6.98,37.5	NS	Dalmolin <i>et al.</i> , 2020
Lateral Flow immunoassay (NG-TEST MCR-1)	<i>Enterobacterales</i> (298, 138) A. <i>baumannii</i> (50) <i>P.aeruginosa</i> (50)	100	98,99	Expensive	Low-High	<0.25	NA	NA	0	0.34	2.10 <sup>8</sup>	Volland <i>et al.</i> , 2019; Fenwick <i>et al.</i> , 2020
<b>Commercial MIC determiners</b>												
UMIC	GNB (235)	100	100	Expensive	High	18-24	100	94	0	0	NS	Bardet <i>et al.</i> , 2019

Diagnostic	Species (n)	Sensitivity (%)	Specificity (%)	Relative cost	Relative skill required	Turn around time (hr)	CA (%)	EA (%)	ME (%)	VME (%)	LOD (CFU/ml or reaction)	References
ComASP Colistin (Sensitest)	GNB (84)	87.18	73.33	Expensive	High	16-24	78.57	78.57	26.67	12.82	NS	Osei Sekyere <i>et al.</i> , 2020
BD Phoenix M50	GNB (131)	100	94.29	Very expensive	High	16-24	98.5	98.5	5.7	0	NS	Hong <i>et al.</i> , 2019
BD Phoenix 100	<i>Hafnia</i> spp. (25) <i>A. baumannii</i> (165) <i>K. pneumoniae</i> (131)	100, 48, 68, 95	100, 100, 100, 94	Very Expensive	High	16-24	100,	100,	0, 0, 0, 6.06	0.52, 32, 5.1	NS	Jayol <i>et al.</i> , 2017; Rodriguez <i>et al.</i> , 2019; Malli <i>et al.</i> , 2018
MicroScan	Enterobacterales	89.29, 85.7	93.90, 76.1	Very	High	16-24	92.7, 80.95	NS	6.1, 23.81	10.7, 14.29	NS	Lutgring <i>et al.</i> , 2019;

Diagnostic	Species (n)	Sensitivity (%)	Specificity (%)	Relative cost	Relative skill required	Turnaround time (hr)	CA (%)	EA (%)	ME (%)	VME (%)	LOD (CFU/ml or reaction)	References
	(110) GNB (84)	1	9	expensive								Osei Sekyere <i>et al.</i> , 2020
Vitek 2	<i>K.pneumoniae</i> (131)	98	88	Very expensive	High	18-24	NS	NS	12.12	2.04	NS	Malli <i>et al.</i> , 2018;
<b>Molecular assays</b>												
Amplidiag® Carba-R+MCR assay	GNB	92-100	86-100	Expensive	High	<3	NA	NA	NA	NA	NS	Girlich <i>et al.</i> , 2019a
AusDiagnostiC CRE MT EU	GNB (393)	95.5-100	99.8	Expensive	High	<4	NA	NA	NA	NA	NS	Meunier <i>et al.</i> , 2018

assay												
Diagnostic	Species (n)	Sensitivity (%)	Specificity (%)	Relative cost	Relative skill required	Turn around time (hr)	CA (%)	EA (%)	ME (%)	VME (%)	LOD (CFU/ml or reaction)	References
LAMP- <i>mcr-1</i>	GNB (22)	100	100	Expensive	High	<1	NA	NA	NA	NA	10 <sup>8</sup>	Zou <i>et al.</i> , 2017
Multiplex-LAMP	<i>Enterobacterales</i> (58)	100	100	Expensive	Very high	<1	NA	NA	NA	NA	10 <sup>4</sup> -10 <sup>5</sup>	Zhong <i>et al.</i> , 2019
MALDI-TOF MS	<i>K. pneumonia</i> (139)	78	89	Expensive	Very high	?	NA	NA	NA	NA	NS	Giordano and Barnini, 2018
MALDIxin	<i>A.baumannii</i> (17) <i>E. coli</i> (40) <i>K.pneumoniae</i> (81)	100	100	Expensive	Very high	0.25-0.5	NA	NA	NA	NA	NS	Furniss <i>et al.</i> , 2019; Dortet <i>et al.</i> , 2020; Dortet <i>et al.</i> , 2018

Diagnostic	Species (n)	Sensitivity (%)	Specificity (%)	Relative cost	Relative skill required	Turnaround time (hr)	CA (%)	EA (%)	ME (%)	VME (%)	LOD (CFU/ml or reaction)	References
MCDA-LFB	GNB (59)	100	100	Expensive	High	<1	NA	NA	NA	NA	600 fg	Gong <i>et al.</i> , 2019

Multiplex PCR	<i>E. coli</i> (50) <i>K. pneumoniae</i> (41) <i>S. enterica</i> (12, 407) <i>Aeromonas spp.</i> (82) <i>Shewenella spp.</i> (10)	100	100	Very expensive	High	<2-3	NA	NA	NA	NA	NS	Jousset <i>et al.</i> , 2019; Borowiak <i>et al.</i> , 2020
Real-time PCR	<i>E. coli</i> (1110)	32-98	100	Very expensive	High	<3	NA	NA	NA	NA	0.1-2200 cfu/ml	Chandler <i>et al.</i> , 2020
Real-time PCR (SYBR Green)	<i>E. coli</i> (332, 1062)	100	100	Very expensive	High	<3	NA	NA	NA	NA	54 cfu/ml	Chalmers <i>et al.</i> , 2018; Tolosi <i>et al.</i> , 2020;
<b>Diagnostic</b>	<b>Species (n)</b>	<b>Sensitivity (%)</b>	<b>Specificity (%)</b>	<b>Relative cost</b>	<b>Relative skill required</b>	<b>Turnaround time (hr)</b>	<b>CA (%)</b>	<b>EA (%)</b>	<b>ME (%)</b>	<b>VME (%)</b>	<b>LOD (CFU/ml or reaction)</b>	<b>References</b>

Real-time PCR (Taqman)	GNB (23)	100	100	Very expensive	High	<3	NA	NA	NA	NA	10 <sup>3</sup>	Daniels <i>et al.</i> , 2019;
Recombinase polymerase amplification	<i>Enterobacterales</i> (23)	100	100	Expensive	High	<0.5	NA	NA	NA	NA	100fg	Xu <i>et al.</i> , 2018
Whole genome sequence	<i>Citrobacter werkmanii</i> (5)	100	100	Most expensive	Highest	<48	NA	NA	NA	NA	NS	Peter <i>et al.</i> , 2018

\*Abbreviations: CA= Categorical agreement EA = Essential agreement ME= Minor error VME =Very major error LOD= Limit of detection