

Title page

SARS-CoV-2 transmission from the healthcare setting into the home: a prospective longitudinal cohort study

Simon Craxford¹ (0000-0002-4672-4587), Jessica Nightingale¹ (0000-0001-8359-5705), Ben Marson (0000-0002-9264-537X), Amrita Vijay¹ (0000-0002-9595-5680), Alan Norrish¹ (0000-0003-3735-1042), Adeel Ikram (0000-0002-7520-6949), Lola M L Cusin (0000-0002-1437-8034), Patrick Tighe (0000-0001-8326-093X), Guruprasad P Aithal (0000-0003-3924-4830)², Stuart Astbury² (0000-0002-1919-3952), Jonathan K. Ball^{2,3,4}, Jayne Newham¹ (0000-0002-1636-4023), Richard A. Urbanowicz^{2,3,4,5} (0000-0002-2461-4993), Anthony Kelly¹ (0000-0001-9859-795), Waheed Ashraf¹, Alexander W. Tarr^{2,3,4}, Ana M Valdes¹ (0000-0003-1141-4471, Benjamin J Ollivere¹ (0000-0002-1410-1756)

Affiliations

1. Division of Rheumatology, Orthopaedics and Dermatology, School of Medicine, The University of Nottingham, Nottingham, NG7 2UH, UK
2. NIHR Nottingham Biomedical Research Centre, Nottingham University Hospitals NHS Trust and the University of Nottingham, Nottingham, UK
3. School of Life Sciences, Faculty of Medicine and Health Sciences, The University of Nottingham, Nottingham, UK
4. Wolfson Centre for Global Virus Infections, The University of Nottingham, Nottingham, UK
5. Department of Infection Biology and Microbiomes, Institute of Infection, Veterinary and Ecological Sciences, University of Liverpool, Liverpool, UK

Corresponding author

Correspondence to Professor Ana Valdes ana.valdes@nottingham.ac.uk

Contributor and guarantor information

Prof Valdes and Prof Ollivere conceptualised the study. Simon Craxford performed data analysis and wrote the manuscript. Ben Marson, Adeel Ikram and Anthony Kelly collected and processed the samples. Jessica Nightingale co-ordinated the study and questionnaire collection. Alan Norrish, Waheed Ashraf and Jayne Newham analysed the samples. Richard Urbanowicz performed the neutralising antibody assays, analysed the data and edited the manuscript.

Prof Valdes is the guarantor for the study and manuscript. The guarantor accepts full responsibility for the work and/or the conduct of the study, had access to the data, and controlled the decision to publish. The corresponding author attests that all listed authors meet authorship criteria and that no others meeting the criteria have been omitted.

NOTE: This preprint reports new research that has not been certified by peer review and should not be used to guide clinical practice.

Copy write statement

The Corresponding Author has the right to grant on behalf of all authors and does grant on behalf of all authors, a worldwide licence to the Publishers and its licensees in perpetuity, in all forms, formats and media (whether known now or created in the future), to i) publish, reproduce, distribute, display and store the Contribution, ii) translate the Contribution into other languages, create adaptations, reprints, include within collections and create summaries, extracts and/or, abstracts of the Contribution, iii) create any other derivative work(s) based on the Contribution, iv) to exploit all subsidiary rights in the Contribution, v) the inclusion of electronic links from the Contribution to third party material where-ever it may be located; and, vi) licence any third party to do any or all of the above.

Conflict of interest

The authors of the paper have no conflicts of interests to declare.

Ben Marson is funded by a National Institute for Health Research (NIHR), Doctoral Fellowship (NIHR300240). This report presents independent research funded by the National Institute for Health Research (NIHR). The views expressed are those of the author(s) and not necessarily those of the NHS, the NIHR or the Department of Health and Social Care.

Abstract

Objective

To assess the incidence of symptomatic and asymptomatic SARS-CoV-2 seropositivity in healthcare workers and subsequent transmission to their close contacts within their household. To assess changes in immunoglobulin (Ig) and neutralising antibodies (nAbs) in exposed participants.

Setting

Two acute National Health Service (NHS) hospitals within the East Midlands region of England.

Background

The UK has been one of the most severely affected countries during the COVID-19 pandemic. Transmission from healthcare workers to the wider community is a potential major vector for spread of SARS-CoV-2 which is not well described in the current literature.

Methods

Healthcare workers (HCW) were recruited from two Hospitals within the East Midlands of England and underwent serial blood sampling for anti-SARS-CoV-2 antibodies (both nucleocapsid and spike protein for IgG, IgM and IgA) between 20 April and 30 July 2020, with the presence of neutralising antibodies (nAbs) assessed for positive participants. Cohabitees of the volunteers were invited to attend testing in July -August 2020 and underwent identical serological testing as the HCWs.

Results

633 healthcare professionals were recruited. 178 household contacts of 137 professionals volunteered for the study. 18% of healthcare professionals (115 out of 633) tested as seropositive during the study period, compared to an estimated seroprevalence of 7% within the general population. The rate of symptomatic COVID-19 was 27.5% compared to an asymptomatic rate of 15.1%. Rates of positivity declined across the study period for all immunoglobulins (overall positivity from 16.7% to 6.9%).

7.2% of the cohabitees tested as seropositive. 58 cohabitees lived with a serologically positive HCW; this group had a seropositive rate of 15.5%, compared to 2.5% of cohabitees without a seropositive HCW, a six-fold increase in risk (Odds ratio 7.16 95% CI 1.86 to 27.59), $p = 0.0025$). Given the observed decay rates and data from Public Health England, we estimate that the proportion of seropositive cohabitees living with a seropositive HCW at the height of the first wave could have been as high as 44%.

110 out of 115 (95.7%) HCWs and 12 out of 13 (92.3%) cohabitees who tested positive developed detectable nAbs. 56.5% (65 out of 115) of SARS-CoV-2 positive HCWs developed a neutralising titre with an $IC_{50} \geq 1/300$; no cohabitee achieved this level..

Conclusions

Transmission of SARS-CoV-2 between healthcare professionals and their home contacts appears to be a significant factor of viral transmission, but, even accounting for the decline in seropositivity over time, less than 44% of adult cohabitants of seropositive healthcare workers became seropositive. Routine screening and priority vaccination of both healthcare professionals and their close contacts should be implemented to reduce viral transmission from hospitals to the community.

Funding

Funding was awarded from the Medical Research Council (MR/V027883/1) with additional institutional support from the Nottingham NIHR BRC. The funders had no role in study design, data collection, data analysis, data interpretation, or writing of the report.

Acknowledgements

We would like to acknowledge the contribution of Miss Weronika Rychlik who helped to process the blood samples.

SUMMARY BOXES

Section 1: What is already known on this topic

- Healthcare workers (HCWs) have increased rates of SARS-CoV-2 infection compared with the general population due, at least in part, to high levels of occupational exposure.
- IgA, IgM and IgG are detectable for most patients after 11 days post SARS-CoV-2 infection but all decline in the weeks following SARS-CoV-2 exposure.
- Rates of transmission to healthcare workers, and therefore subsequent transmission to their close contacts, may be reduced with effective PPE.

Section 2: What this study adds

- The amount of neutralising antibodies formed may be dependent on IgG response as it is much lower among seropositive cohabitants than seropositive healthcare workers.
- NHS Healthcare workers had a far greater seroprevalence of SARS-CoV-2 infection compared to the general population.
- Cohabitants of positive healthcare workers have a 6-fold increased risk of developing serological evidence of SARS-CoV-2 infection compared to the general population.
- Despite this increased risk, transmission at home is less than 50% even from highly exposed healthcare workers, but remains an important potential vector of transmission from hospitals to the wider community.

Research into context

Evidence before this study

We searched PubMed for articles published between January 1 2020 and January 27, 2021 with the terms “Covid-19”, “healthcare workers”, and “transmission” “home {NOT nursing} or household”. We did not restrict our search by language or type of publication. We identified 38 studies of which only one assessed the prevalence among HCW households using Canadian national databases. Our PubMed search yielded only one serological study within the German Healthcare system, which suggested very low transmission from healthcare workers to their close cohabitantes.

Added value of this study

To our knowledge, this is the largest longitudinal serological cohort study assessing transmission of SARS-CoV-2 infection from the UK healthcare environment to the home (n = 633 healthcare workers, 178 cohabitantes). Our findings showed that serological evidence within the HCW was high with 18% of healthcare professionals (115 out of 633) tested as seropositive during the study period, compared to an estimated seroprevalence of 7% within the general population. A cohabitee of a seropositive HCW had a six-fold increase of being seropositive themselves compared to a baseline rate of 2.5%. Despite this increased risk, transmission at home is less than 50% even from highly exposed healthcare workers, but remains an important potential vector of transmission from hospitals to the wider community. Rates of positivity declined across the study period for all immunoglobulins (overall positivity from 16.7% to 6.9%). Given the observed decay rates and data from Public Health England, we estimate that the proportion of seropositive cohabitantes living with a seropositive HCW at the height of the first wave could have been as high as 44%.

Implications of all available evidence

Understanding the transmission during the first wave from the healthcare setting into the home and the extent of such transmissions is essential to understand containment strategies of novel SARS-CoV-2 variants or to understand viral transmission of future respiratory viruses. NHS workers appeared to be at an increased risk of contracting of SARS-CoV-2 infection compared to the HCWs of other nations; we hypothesise that this may be related to a scarcity of appropriate personal protective equipment during the initial wave of SARS-CoV-2. Healthcare workers (HCWs) have increased rates of SARS-CoV-2 infection compared with the general population. An infected HCW, whether symptomatic or not, appears to be a significant bridge for transmission of SARS-CoV-2 to their close home contacts.

Background

The United Kingdom (UK) has been severely affected by both the first and current second wave of severe acute respiratory syndrome coronavirus 2 (SARS-CoV-2), which causes COVID-19¹.

The transmission of SARS-CoV-2 is mainly considered to occur via person-to-person close contact by droplet infection². Front line healthcare workers (HCWs) responding to the current pandemic have many more close contacts with potential COVID-19 patients and so are at an elevated risk of contracting COVID-19 compared to the general population³. Published studies suggest that front-line healthcare workers could account for up to 20% of all COVID-19 diagnoses^{4,5}. A lack of adequate personal protection equipment (PPE) and delays in setting up an effective contact tracing system during the first wave of the pandemic may also contribute to this increased risk^{6,7}.

Current UK guidelines advise household contacts to isolate within the same home as the index case for 10 days following a positive test⁸. Despite guidance advising household members to socially distance, cohabitants of the affected household are likely to interact repeatedly, including in the use of shared facilities such as bathrooms or kitchens, and therefore be exposed to potential SARS-CoV-2 transmission⁹. Household cohabitants make up the majority of close contacts for infected individuals and may account for up to 70% of SARS-CoV-2 transmissions when widespread community measures, such as local lockdowns, are in place¹⁰. As healthcare providers are designed as key workers who attend their job despite COVID-19 restrictions, asymptomatic transmission within this group may also undermine the effects of nationally instituted "lock-downs". Hospitals, healthcare workers and their cohabitants may therefore provide an ongoing reservoir of SARS-CoV-2 infection^{3,11}.

Studies assessing transmission of SARS-CoV-2 have so far focused on symptom trackers and single serology samples¹². However, these studies may miss asymptomatic infections. Few prospective longitudinal serological studies of healthcare workers have been performed to date.

The primary aim of this study was to assess rates of both symptomatic and asymptomatic seropositivity within a patient-facing healthcare worker (HCW) population and subsequent transmission from HCW to their household cohabitants. The longitudinal design of the study also allowed for the characterisation of Ig response and formation of neutralising antibodies during the first wave of SARS-CoV-2.

Methods

Recruitment

The PANdemic Tracking of Healthcare workers (Panther) prospective cohort began in April 2020. Between April 24th and July 10th 2020, patient-facing healthcare professionals were recruited from the Queen's Medical Centre and City Hospital located in Nottingham, UK and formed the "Healthcare workers Cohort". Participants included asymptomatic healthcare workers and support staff working at these hospitals who were required to complete a health questionnaire (attached as a Supplementary file) and provide blood samples at 9 study visits (baseline, weeks 1, 2, 3, 4, 6, 8, 10 and at month 4 and month 6 following recruitment). All participants provided written informed consent prior to completing the questionnaire and providing blood samples. Blood samples at each visit was collected using BD Serum Separator Tubes (SST-II) for serum. PAX gene Vacutainer

tubes for RNA and EDTA tubes for DNA were collected at baseline. Bloods collected for serum were processed within 30 minutes of collection and stored at -80°C until further analysis. Bloods for RNA and DNA extractions were collected and stored immediately at -20°C for the first 24 hours and then transferred to -80°C . Our study website (<https://pantherstudy.org.uk/>) was primarily developed as the gateway to increase participation rate by providing background information on the aims and objectives of the study and how participants could enrol into the study.

In September 2020, study participants were invited to bring their household contacts (aged over 18) for a single blood sample. These participants were invited at the earliest opportunity when they could safely attend the hospital for blood testing. These recruits formed the "Household contacts" cohort.

The PANTHER protocol is available online (www.pantherstudy.org.uk). Samples were collected and stored under a Human Tissue Authority licence in Nottingham Tissue Bank (Licence number: 11035). The study protocol was approved by North West - Greater Manchester South Research Ethics Committee (reference 20/NW/0395).

Serological processing

Anti-S1 and anti-nucleocapsid ELISA

Serum samples were serially diluted in 3% skimmed milk powder in PBS containing 0.05% Tween 20 and 0.05% sodium azide. All assays were performed on Biotek Precision liquid handling robots in a class II microbiological safety cabinet. For endpoint dilution ELISAs, sera were progressively 4-fold diluted from 1:150 to 1:38,400. ELISA was performed by coating 384 well Maxisorp (NUNC) assay plates with either 20 μL per well of 0.5 $\mu\text{g}\cdot\text{mL}^{-1}$ of Wuhan strain SARS-CoV-2 spike protein S1 subunit (His tagged, HEK293 expressed; Sino Biological) or SARS-CoV-2 nucleocapsid (His Tagged, baculovirus expressed; Sino Biological) in carbonate-bicarbonate buffer (CBC; Merck), or human IgG at 1 $\mu\text{g}\cdot\text{mL}^{-1}$ in CBC buffer as controls. Plates were sealed with foil film and incubated overnight at 4°C . Plates were then washed with PBS with 0.05% Tween 20 (PBS-T) 3 times using a ThermoFisher Wellwash Versa plate washing robot. Wells were immediately filled with 100 μL of 3% skimmed milk powder (w/v) in PBS and 0.05% sodium azide (PBS-MA) and blocked overnight at 4°C . Assay plates were then washed 3 times and 20 μL of pre-diluted serum sample (including SARS-CoV-2 antibody-positive and negative serum controls) added in duplicate wells. After one hour at 21°C , the plate was washed 3 times in PBS-T, followed by addition of 20 μL of gamma chain-specific anti-human IgG-HRP conjugate (Sigma A0170-1ML) at 1:30,000 dilution, incubating for one hour at 21°C . Following a final three washes with PBST, 40 μL One-step UltraTMB substrate solution (ThermoScientific) was added to each well. After incubating for 20 minutes at room temperature, 40 μL of 2N H_2SO_4 was added to each well and Absorbance was measured at 450nm using a GlowMax Explorer microplate reader (Promega).

SARS-CoV-2 pseudotype neutralization assay

Participants found to be seropositive for SARS-CoV-2 were assessed for the presence of neutralising antibodies. The latest positive time point was utilised for each participant for neutralising antibody assays to standardise results in evolving immunity. Human Embryonic Kidney 293T and VeroE6 cell lines were purchased from ECACC. Both cell

lines were grown in Dulbecco's modified eagle medium (DMEM; Invitrogen), supplemented with 10% fetal bovine serum (Invitrogen), and 0.1mM nonessential amino acids (GIBCO) at 37°C and 5% CO₂. Cell lines were tested to verify the absence of mycoplasma. No assays were performed to verify the identity of the cells in culture following receipt of the cells.

Pseudotypes were produced as previously described¹³. Briefly, 1.5×10^6 HEK293T cells were seeded overnight in a 10 cm diameter Primaria-coated dish (Corning). Transfections were performed by mixing 2 µg of murine leukemia virus (MLV) Gag-Pol packaging vector (pHCMV-5349), 2 µg of luciferase encoding reporter plasmid (pTG126) and 2 µg Wuhan strain SARS-CoV-2 spike plasmid with 24 µL polyethylenimine (Polysciences) in Optimem (Gibco). Mixtures were added to cells for 6 hours, after which they were replaced with complete DMEM. A no-envelope control (nude pseudotype) was used as a negative control in all experiments. Supernatants containing SARS-CoV-2 pseudotype viruses (pv) were harvested 72 h post-transfection and filtered through 0.45 µm membranes. For infectivity and neutralization testing of SARS-CoV-2 pv, 2×10^4 VeroE6 cells/well were plated in white 96-well tissue culture plates (Corning) and incubated overnight at 37 °C. The following day, SARS-CoV-2 pv-containing supernatants were incubated with 1/300 dilution of sera (pre-treated with 1% Triton X-100/heat-inactivated for 1 hr at RT), before being added to VeroE6 cells for 4 h. Infection inocula were then discarded and 200 µL DMEM added to the cells. After 72 h, media was discarded, cells lysed with cell lysis buffer (Promega) and relative luciferase activity (in RLU) measured using a FLUOstar Omega plate reader (BMG Labtech). Each sample was tested in triplicate.

Statistical analysis

Univariable and multivariable binary logistic regression was performed to identify co-variables contributing to a positive sample. The Index of Multiple Deprivation (IMD) decile for their geographical area was assigned using the participant's post code. Other variables for adjustment include age, sex, ethnicity, symptoms of COVID-19 and job role. Participants were classified as seropositive if they had a positive titre to either the NC or the S1 protein at any of the time-points sampled. Participants were classified as having reported symptoms if at any time point during the period of assessment if they complained of a symptom attributable to suspected viral infection (headaches, fever, cough, loss of sense of smell or taste, fatigue, difficulty breathing) or they had to self-isolate with suspected COVID-19. Estimates of seroprevalence for the general population were obtained using data from Public Health England¹⁴. Seropositive cohabittees with a negative HCW were used as a "control" to estimate the likely decay in positivity and the likely "true" rate of cohabitee infection earlier during the pandemic.

Neutralising antibodies were stratified based on achieving a neutralising percentage of 50% or greater at 1/300 dilution. The relationship with peak IgG, IgA or IgM and neutralisation percentage was assessed using multiple linear regression, and predictors influencing neutralisation percentage was assessed using binary multivariable logistic regression / multiple linear regression. Lastly, neutralising percentages were correlated between HCWs and cohabittees using Spearman's rho.

Statistical analysis was performed using IBM SPSS Version 24. A p value of <0.05 was deemed statistically significant. Figures were produced using Graphpad Prism version 8.

Results

Sample

633 healthcare professionals (HCWs) were recruited across the two acute hospitals. 178 household contacts from 137 HCWs volunteered for the study. The recruitment is shown in Figure 1.

Figure 1: Study recruitment, seropositivity and estimated seropositivity of population of the Midlands ¹⁴. (see end of manuscript).

22 HCWs (3.48%) reported testing positive on a nasal swab COVID PCR either during the study period or immediately before. HCWs inviting their contacts to attend the study had a greater rate of seropositivity, with a rate of 37%. The cohabitee contacts had an overall 7.2% seropositivity. Of the 58 cohabitees of seropositive HCW had a seropositive rate of 15.5%, compared to 2.5% of cohabitees without a seropositive HCW ($p = 0.0025$, Fishers Exact). While 12 out of 13 samples demonstrated detectable neutralising antibodies, no cohabitee displayed neutralising antibodies of greater than 50%.

No participant required hospital treatment for COVID-19 during the study, however the spouse of one participant died of COVID-19 before the start of the study. The demographic characteristics of the cohorts are summarized in table 1.

Table 1: Demographics and proportion of 'anti-SARS-CoV-2 nucleocapsid positive participants for healthcare workers and cohabitees.

		N anti-NC negative	N anti-NC positive	% anti-NC positive
Healthcare workers				
Participants	Total	518	115	18.2%
Age	Mean years (SD)	43.1 (11.6)	43.9 (11.6)	
Gender	M	115	22	16.1%
	F	401	91	18.7%
	Other/Not specified	2	0	0.0%
Symptomatic	yes	108	42	28.0%
	no	410	73	15.1%
Ethnicity*	South Asian	40	10	20.0%
	East Asian	6	2	25.0%
	Black	10	7	41.2%
	Mixed	24	9	27.3%
	Not stated	1	0	0.0%
	White	439	87	16.5%
IMD decile	1-3	96	29	23.2%
	4-7	177	38	17.7%
	8-10	130	29	18.2%
	Unspecified	113	19	14.4%
Hospital role	ITU role	36	1	2.7%

	Frontline not ITU role	484	114	19.1%
Medical co-morbidity	Smoker	116	22	15.9%
	Diabetes	9	0	0.0%
	Respiratory disease	62	18	22.5%
	Cardiovascular disease	2	9	18.2%
	Hypertension	8	33	19.5%
Cohabitees				
Participants	Total	165	13	7.30%
Linked HCW Status	Positive HCW	49	9	15.5%
	Negative HCW	117	3	2.6%
Age	Mean years (SD)	38.31 (15.72)	41.41 (14.68)	
Gender	Male	46	9	16.4%
	Female	119	3	2.5%
BMI	Mean (SD)	26.0 (5.2)	26.3 (4.7)	
	Did not state	0	1	100%
Symptoms	Symptomatic	24	3	11.1%
	Asymptomatic	141	9	6.0%
Ethnicity*	South Asian	5	1	16.7%
	East Asian	5	1	16.7%
	Black	6	0	0
	Mixed	2	0	0
	Other	0	1	100%
	White	147	10	6.4%
Medical co-morbidity	Smoker	7	0	0
	Diabetes	5	0	0
	Respiratory disease	22	2	8.3%
	Cardiovascular disease	4	1	20%
	Hypertension	9	1	10%

*ethnicity self selected by participant from Office of National Statistics categories

Serology

Overall, 18% of healthcare professionals (115 out of 633) tested as seropositive during the study period. 149 participants reported symptoms consistent with a viral infection; 41 had serological evidence of SARS-CoV-2 infected (27.5%). The rate of SARS-CoV-2 for HCWs without symptoms was 15.1% (73 out of 484). There was considerable variability within the exact immunoglobulin response generated by the participants after exposure to SARS-CoV-2. While the total number of people who had serological evidence of SARS-CoV-2 increased during the study period, rates of IgG, IgM and IgA positivity all showed significant decay, as shown in Figure 2.

Neutralising antibodies

110 out of 114 (96.5%) HCWs who had tested positive for any immunoglobulin had detectable neutralising antibodies at least two months following seropositivity. With our threshold of 50% neutralisation at a 1:300 triton dilution 57% (65 out of 114) of SARS-CoV-2 positive participants developed an effective neutralising antibody response. Univariate analysis suggested that a higher peak of IgM Spike protein was associated with an increased chance of a sustained neutralising percentage of greater than 50%; this was not significant after multivariable adjustment (see figure 3).

Multiple linear regression was carried out to investigate whether peak spike protein Ig and ethnicity could significantly predict levels of neutralising antibodies. The results of the regression indicated that the model explained only 22.7% of variance and that the model was a significant predictor of neutralising antibody status, $F = 3.22$, $p = 0.021$. Only peak IgG and white ethnicity contributed significantly to the model (see figure 4).

Figure 3: Heat map demonstrating unadjusted and adjusted Odds Ratios for immunoglobulin levels potentially influencing neutralising antibody formation.

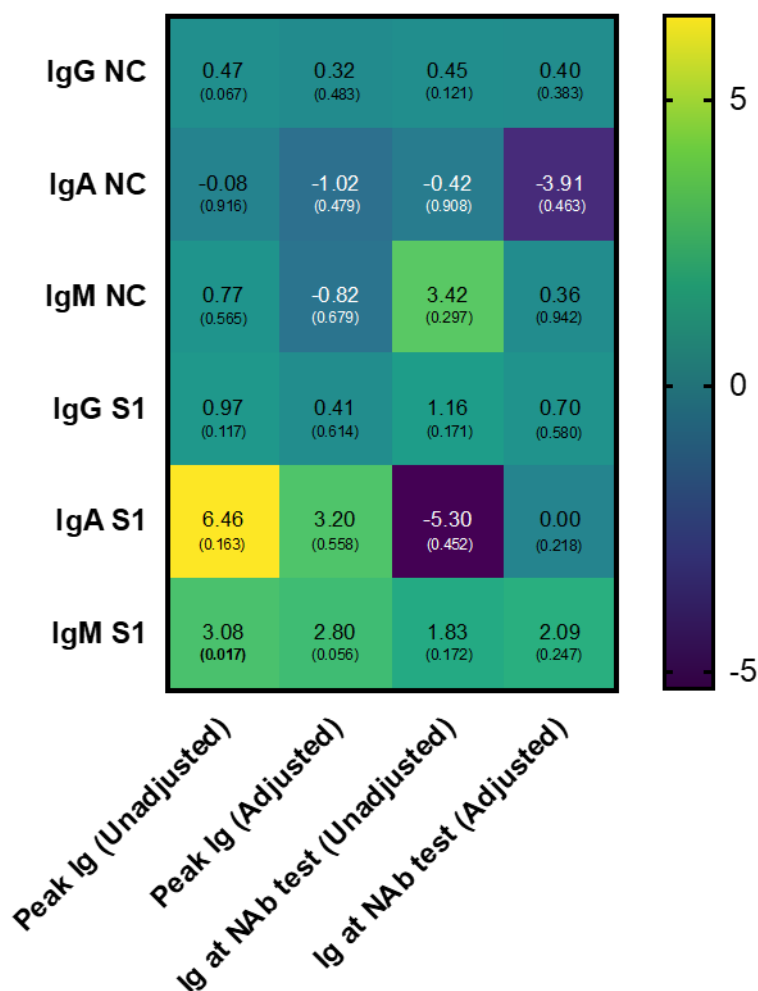
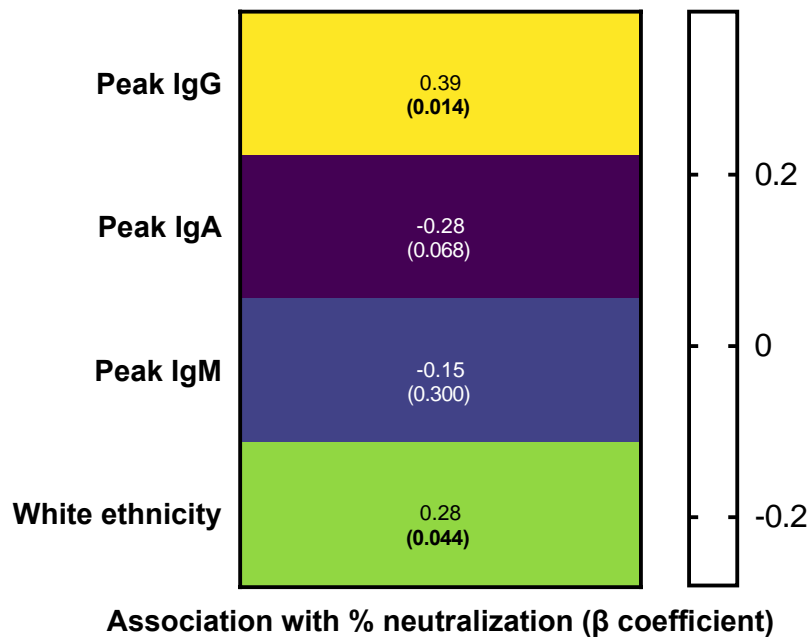


Figure 4: Heat map demonstrating predictors of neutralising antibody response



While regression modelling suggested a potential link between peak IgG and neutralising antibodies, several volunteers who had a high and sustained IgG response did not go on to mount a neutralisation response of 50% or greater at 1/300 dilution (see figure 5).

178 household contacts from 137 HCWs volunteered for the study. HCWs inviting their contacts to attend the study had a greater rate of seropositivity, with a rate of 37%. The cohabitee contacts had an overall 7.2% seropositivity. Of the 58 cohabitees of seropositive HCW had a seropositive rate of 16%, compared to 2.5% of cohabitees without a seropositive HCW ($p = 0.0025$, Fishers Exact). This represents a six-fold increase in risk (unadjusted Odds ratio 7.16 95% CI 1.86 to 27.59, $p = 0.0025$, adjusted OR for ethnicity 6.86, CI 1.74 to 27.02).

While 12 out of 13 samples demonstrated detectable neutralising antibodies, no cohabitee displayed neutralising antibodies of greater than 50% (see figure 6). There was no strong correlation in neutralising antibody percentage between paired HCWs and cohabitees (Spearman's rho correlation coefficient 0.311, $p=0.301$).

Antibody response to SARS-CoV-2

Univariable and multivariable analysis of risk factors for HCWs developing a serological response to SARS-CoV-2 in table 4. Only black ethnicity and the presence of symptoms were associated with an increased risk of SARS-CoV-2 seropositivity.

Table 2: Unadjusted and adjusted Odds Ratios (OR) for risk factors for developing antibodies to COVID-19.

Variable	Unad OR	95% CI	P	Ad. OR	95% CI	P
Age	1.005	0.99 to 1.02	0.57	1.01	0.989 to 1.026	0.43
Symptomatic	1.98	1.28 to 3.07	0.002	2.10	1.33 to 3.29	0.001
ITU role	0.38	0.11 to 1.25	0.112	0.33	0.099 to 1.121	0.076
Male Gender	0.76	0.46 to 1.30	0.334	0.80	0.466 to 1.36	0.404
Smoker	0.88	0.53 to 1.45	0.609	0.96	0.57 to 1.62	0.882
Diabetes	0.56	0.069 to 4.48	0.580	0.53	0.062 to 4.55	0.563
Respiratory disease	1.31	0.69 to 2.51	0.417	1.35	0.692 to 2.62	0.380
Cardiovascular disease	0.99	0.21 to 4.66	0.99	0.93	0.191 to 4.54	0.930
Hypertension	1.09	0.49 to 2.43	0.83	0.99	0.423 to 2.31	0.979
Ethnicity						
Black	2.60	0.94 to 7.20	0.067	2.98	1.01 to 8.74	0.047
East Asian	1.30	0.51 to 3.29	0.582	1.46	0.56 to 3.78	0.446
Mixed	1.19	0.39 to 3.64	0.760	1.34	0.54 to 3.31	0.519
South Asian	1.28	0.54 to 3.04	0.573	1.36	0.54 to 3.31	0.532
White	1			1		

Discussion

Healthcare worker and cohabitee SARS-CoV-2 infection

Health care workers are at an elevated risk of infection as they work on the frontline of the response to the current pandemic. This study found that 18% of healthcare workers had antibody evidence of SARS-CoV-2 infection. This is higher than the estimated seropositive rate of the overall Midlands population during the same time period, which was between 6.5 and 7.2% throughout our study period¹⁵. Currently, few longitudinal serological studies of HCWs have published. Behrens et al and Herzberg et al found a lower serological rate of infection within German HCWs of between 1.8% and 4% respectively, which was attributed to effective infection control protocols^{16 17}. Consistent use of appropriate PPE has been shown to reduce the risk of transmission to healthcare workers when caring for an infectious patient¹⁸. This may explain why ITU staff in our study (2.7% vs 19.1%, RR 0.1418 95% CI 0.0204 to 0.9869, p 0.0485) had a lower risk of infection, as higher rated PPE was initially recommended for these areas compared to a standard ward. Shortages of masks and inadequate PPE within the NHS during the first wave of COVID-19 were well documented may have contributed to the increased

seropositivity of healthcare workers and turned hospitals into reservoirs of potential nosocomial infection¹⁹.

While transmission of SARS-CoV-2 within households is known to be high, few studies have assessed the particular risk of transmission of SARS-CoV-2 to family members of health care workers⁹. Lorenzo et al²⁰ found 32.1% of tested family members of healthcare workers were positive for SARS-CoV-2, compared to only 5.3% healthcare workers. They concluded that family members were a greater transmission risk than healthcare professionals. Our study found the opposite, with cohobitees with a positive HCW contact being six times more likely to contract SARS-CoV-2, compared to those without. This suggests that the infection control policies in place at the time were failing to stop transmission of SARS-CoV-2 from the hospital to the wider community.

We were only able to invite cohobitees to attend blood sampling at the end of the national lockdown. As a result of the observed decay in Ig seropositivity seen in the healthcare workers, we have likely underestimated the true rate of SARS-CoV-2 transmission to cohobitees. Using an assumed 2.84 fold decrease in Ig positivity (from an estimated 7% prevalence within the general population during the early phase of the study to the 2.5% rate seen in our "control" cohobitees), we can estimate that the true proportion of positive cohobitees living with a seropositive HCW at the height of the first wave could have been as high 44%.

There was no significant difference in the mean neutralising percentage for participants with symptoms compared to asymptomatic (55.58% vs 51.55%, $p = 0.405$, Independent Samples T Test).

In total, there were 56 seropositive HCWs whose cohobitees donated a serum sample. Of these, nine had a seropositive cohobitee and 47 had one or more seronegative cohobitees. We found no significant differences in the levels of neutralization between those seropositive HCWs who presumably transmitted SARS-CoV-2 to their cohobitee (52.8% neutralization (95% CI 46-143%)) and those whose cohobitees remained seronegative (48.9% (95%CI 32-111%)).

A higher proportion of individuals reported COVID-19 symptoms among the seropositive HCW whose cohobitees seroconverted (55.6 % (95%CI 27-81%)) than those whose cohobitees remained seronegative (37.5% (95%CI 25-52%)) but the difference did not achieve statistical significance.

Based on our study findings, we would recommend that both HCWs and their cohobitees are included in early vaccination programmes when they are available. Universal screening of healthcare workers may also be beneficial. Apart from the cost and manpower implications of this, the current swabs have a false negative rate of between 2 and 33%²¹. While the majority of COVID-19 cases were symptomatic, the majority of people with symptoms were not seropositive. As the majority of participants that reported symptoms were not COVID-19 positive, excluding them from a caring role on symptoms alone would deprive the NHS of staff needlessly during a time of increased resource need.

Serological response to SARS-CoV-2

Due to the only recent emergence of SARS-CoV-2, our understanding of antibody responses and its clinical implications with regards to possible immunity following repeat exposure is limited. The longitudinal nature of our study allowed for the assessment of the seroconversion event after exposure to SARS-CoV-2. Our study demonstrates

reasonable rates of antibody formation despite many of the participants being asymptomatic. Our study demonstrated a decay in rates of IgG, IgA and IgM in positive participants. Rates of IgG, IgA and IgM were similar.

Promisingly, the majority, but not all, of participants who tested positive for SARS-CoV-2 developed measurable neutralising antibodies several weeks after their initial exposure. While the vast majority of positive cohabittees had detectable neutralising antibodies, no cohabitee mounted a neutralising response of over 50% compared to over half of the HCWs. It is probable that the level of neutralising antibodies fell with time, as the cohabittees were tested for neutralising antibodies approximately two months after most of the HCWs. Wajainberg et al found that 90% of patients who were positive at 1:320 mounted a detectable neutralising antibody response for at least 3 to 5 months at identical titres to our study after contracting SARS-CoV-2²². We still do not know the required neutralising response to provide longstanding immunity from recurrent SARS-CoV-2 infection. Animal models have suggested protection is gained from SARS-CoV-2 if neutralising antibodies are able to neutralize 50% of the virus at a serum concentration of 1:200²³; further work is required to delineate the response needed to provide immunity in humans.

Peak levels of IgG (spike protein) and white ethnicity may be associated with increasing levels of neutralising antibodies. We were however unable to demonstrate a significant predictor of who goes on to develop a substantial neutralising antibody response of over 50%. We found variation in antibody response between participants, with some participants with a high and sustained antibody titre failing to develop a correspondingly high neutralisation titre. The current global vaccination programmes could provide a further opportunity to assess who develops long-term neutralisation antibodies. While long-term data is lacking, the presence of neutralising antibodies does appear to decline by three months post exposure²⁴. Long term data regarding potential immunity following exposure, including the long term efficacy of the current vaccinations being deployed, remains lacking²⁵. Further work will be urgently needed establish how long this response lasts, and whether this translates to immunity from repeat SARS-CoV-2 infection.

Risk factors for seropositivity

The evidence defining who is at the greatest risk of contracting and suffering a negative outcome from COVID-19 is rapidly expanding, with both environmental, viral and patient factors being reported^{26 27}. The majority of studies have focused on patients and healthcare workers with serious infections requiring hospitalisation, or focused on population level data relying on positive swabs³. Few studies have described the incidence of asymptomatic SARS-CoV-2 within healthcare workers and their close contacts using serological data. Other studies have demonstrated risk factors for developing a more severe COVID-19 infection requiring hospitalisation. Identified risk factors for negative outcomes have included black ethnicity, age and male gender²⁸. In our study participants presented were largely either asymptomatic or had minimal symptoms. We identified that participants of a black ethnic background were at an increased risk of contracting SARS-CoV-2, independent of social deprivation, gender, age, medical comorbidities and ITU role. This supports the observation that NHS workers of an ethnic minority background are at an increased risk of contracting SARS-CoV-2²⁹.

Limitations

There are limitations to this study. A major drawback in terms of assessing the factors affecting transmission is the number of seropositive cohobitees, i.e., putative transmission events. Although we found a considerably larger proportion (55.6%) of symptomatic seropositive HCW has seropositive cohobitees than those who had seronegative cohobitees (37.5%) there are only n=9 pairs where both the HCW and cohobitee were seropositive. This highlights the need for larger HCW-cohobitee pair studies to investigate the risks of transmission. In addition, no single assay has perfect sensitivity and specificity³⁰. Few participants had tested positive on nasal SARS-CoV-2 PCR. Routine screening of staff members was not in force during the study period so our results could not be compared to swab or other independently collected results. Our cohort was largely asymptomatic or had low-level symptoms; further study is needed to confirm the generalisability of our results to patients with more severe cases of COVID-19. The cohobitee cohort also only donated a single sample. We were therefore unable to confirm the direction of SARS-CoV-2 transmission as it is possible that the positive cohobitees actually transmitted the virus to the HCW. This raises an additional risk of viral spread, as healthcare workers infected by their cohobitees may transmit the virus into "green" COVID-19 free areas of the hospital. In addition, as the single blood sample was taken later in the study for the cohobitees; based on the observed decay of immunoglobulin levels seen in our study, it is possible that a greater proportion of cohobitees were seropositive earlier during the first wave of the pandemic. We have generated a range of estimates for the likely "true" rate of cohobitee seroprevalence taking into account the observed decay in Ig levels seen in both the healthcare worker cohort and in other studies³¹. Lastly, other immunity pathways may contribute towards immunity to recurrent infection. Further work on the cohort will include assessment of T-lymphocytes and genotyping of both seropositive and seronegative participants.

Conclusion

Healthcare workers and their cohobitees appear to be an important factor for transmission from hospital to the community. As asymptomatic transmission was common, these groups should be viewed as a priority for regular screening and vaccination.

References

1. Anderson RM, Hollingsworth TD, Baggaley RF, et al. COVID-19 spread in the UK: the end of the beginning? *The Lancet* 2020;396(10251):587-90. doi: 10.1016/S0140-6736(20)31689-5
2. The Lancet Respiratory M. COVID-19 transmission-up in the air. *Lancet Respir Med* 2020:S2213-600(20)30514-2. doi: 10.1016/S2213-2600(20)30514-2
3. Nguyen LH, Drew DA, Graham MS, et al. Risk of COVID-19 among front-line health-care workers and the general community: a prospective cohort study. *Lancet Public Health* 2020;5(9):e475-e83. doi: 10.1016/S2468-2667(20)30164-X [published Online First: 2020/07/31]
4. Characteristics of Health Care Personnel with COVID-19 - United States, February 12-April 9, 2020. *MMWR Morb Mortal Wkly Rep* 2020;69(15):477-81. doi: 10.15585/mmwr.mm6915e6 [published Online First: 2020/04/17]
5. Lazzarini M, Putoto G. COVID-19 in Italy: momentous decisions and many uncertainties. *Lancet Glob Health* 2020;8(5):e641-e42. doi: 10.1016/s2214-109x(20)30110-8 [published Online First: 2020/03/22]

6. Kursumovic E, Lennane S, Cook TM. Deaths in healthcare workers due to COVID-19: the need for robust data and analysis. *Anaesthesia* 2020;75(8):989-92. doi: 10.1111/anae.15116 [published Online First: 2020/05/23]
7. Thomas JP, Srinivasan A, Wickramarachchi CS, et al. Evaluating the national PPE guidance for NHS healthcare workers during the COVID-19 pandemic. *Clin Med (Lond)* 2020;20(3):242-47. doi: 10.7861/clinmed.2020-0143
8. England PH. Stay at home: guidance for households with possible or confirmed coronavirus (COVID-19) infection. 2021
9. Grijalva CG, Rolfes MA, Zhu Y, et al. Transmission of SARS-CoV-2 Infections in Households - Tennessee and Wisconsin, April-September 2020. *MMWR Morb Mortal Wkly Rep* 2020;69(44):1631-34. doi: 10.15585/mmwr.mm6944e1 [published Online First: 2020/11/06]
10. Shen M, Peng Z, Guo Y, et al. Assessing the effects of metropolitan-wide quarantine on the spread of COVID-19 in public space and households. *Int J Infect Dis* 2020;96:503-05. doi: 10.1016/j.ijid.2020.05.019 [published Online First: 2020/05/18]
11. Meredith LW, Hamilton WL, Warne B, et al. Rapid implementation of SARS-CoV-2 sequencing to investigate cases of health-care associated COVID-19: a prospective genomic surveillance study. *The Lancet Infectious Diseases* 2020;20(11):1263-72. doi: 10.1016/S1473-3099(20)30562-4
12. Wells PM, Doores KJ, Couvreur S, et al. Estimates of the rate of infection and asymptomatic COVID-19 disease in a population sample from SE England. *J Infect* 2020:S0163-4453(20)30653-8. doi: 10.1016/j.jinf.2020.10.011
13. Tighe PJ, Urbanowicz RA, Fairclough L, et al. Potent anti-SARS-CoV-2 Antibody Responses are Associated with Better Prognosis in Hospital Inpatient COVID-19 Disease. *medRxiv* 2020:2020.08.22.20176834. doi: 10.1101/2020.08.22.20176834
14. England PH. Weekly Coronavirus Disease 2019 (COVID-19) Surveillance Report Summary of COVID-19 surveillance systems Year: 2020 Week: 31. 2020
15. England PH. Sero-surveillance of COVID-19 2020 [Available from: <https://www.gov.uk/government/publications/national-covid-19-surveillance-reports/sero-surveillance-of-covid-19> accessed 30 Nov 2020 2020.
16. Herzberg J, Vollmer T, Fischer B, et al. A Prospective Sero-epidemiological Evaluation of SARS-CoV-2 among Health Care Workers in a German Secondary Care Hospital. *International Journal of Infectious Diseases* 2020 doi: 10.1016/j.ijid.2020.10.026
17. Behrens GMN, Cossmann A, Stankov MV, et al. Strategic Anti-SARS-CoV-2 Serology Testing in a Low Prevalence Setting: The COVID-19 Contact (CoCo) Study in Healthcare Professionals. *Infect Dis Ther* 2020;9(4):837-49. doi: 10.1007/s40121-020-00334-1 [published Online First: 2020/09/04]
18. Verbeek JH, Rajamaki B, Ijaz S, et al. Personal protective equipment for preventing highly infectious diseases due to exposure to contaminated body fluids in healthcare staff. *The Cochrane database of systematic reviews* 2020;4(4):Cd011621. doi: 10.1002/14651858.CD011621.pub4 [published Online First: 2020/04/16]
19. Iacobucci G. Covid-19: Doctors still at "considerable risk" from lack of PPE, BMA warns. *BMJ (Clinical research ed)* 2020;368:m1316. doi: 10.1136/bmj.m1316
20. Lorenzo D, Carrisi C. COVID-19 exposure risk for family members of healthcare workers: An observational study. *International Journal of Infectious Diseases* 2020;98:287-89. doi: <https://doi.org/10.1016/j.ijid.2020.06.106>
21. Surkova E, Nikolayevskyy V, Drobniowski F. False-positive COVID-19 results: hidden problems and costs. *The Lancet Respiratory Medicine* doi: 10.1016/S2213-2600(20)30453-7
22. Wajnberg A, Amanat F, Firpo A, et al. Robust neutralizing antibodies to SARS-CoV-2 infection persist for months. *Science* 2020;370(6521):1227. doi: 10.1126/science.abd7728

23. Chandrashekar A, Liu J, Martinot AJ, et al. SARS-CoV-2 infection protects against rechallenge in rhesus macaques. *Science* 2020;369(6505):812. doi: 10.1126/science.abc4776
24. Seow J, Graham C, Merrick B, et al. Longitudinal observation and decline of neutralizing antibody responses in the three months following SARS-CoV-2 infection in humans. *Nature Microbiology* 2020;5(12):1598-607. doi: 10.1038/s41564-020-00813-8
25. Ramasamy MN, Minassian AM, Ewer KJ, et al. Safety and immunogenicity of ChAdOx1 nCoV-19 vaccine administered in a prime-boost regimen in young and old adults (COV002): a single-blind, randomised, controlled, phase 2/3 trial. *The Lancet* doi: 10.1016/S0140-6736(20)32466-1
26. Kifer D, Bugada D, Villar-Garcia J, et al. Effects of environmental factors on severity and mortality of COVID-19. *medRxiv* 2020:2020.07.11.20147157. doi: 10.1101/2020.07.11.20147157
27. Zhou F, Yu T, Du R, et al. Clinical course and risk factors for mortality of adult inpatients with COVID-19 in Wuhan, China: a retrospective cohort study. *The Lancet* 2020;395(10229):1054-62. doi: 10.1016/S0140-6736(20)30566-3
28. Flynn D, Moloney E, Bhattarai N, et al. COVID-19 pandemic in the United Kingdom. *Health Policy Technol* 2020;9(4):673-91. doi: 10.1016/j.hlpt.2020.08.003 [published Online First: 2020/08/27]
29. Eyre DW, Lumley SF, O'Donnell D, et al. Differential occupational risks to healthcare workers from SARS-CoV-2 observed during a prospective observational study. *Elife* 2020;9:e60675. doi: 10.7554/eLife.60675
30. National S-C-SAEG. Performance characteristics of five immunoassays for SARS-CoV-2: a head-to-head benchmark comparison. *Lancet Infect Dis* 2020:S1473-3099(20)30634-4. doi: 10.1016/S1473-3099(20)30634-4
31. Iyer AS, Jones FK, Nodoushani A, et al. Persistence and decay of human antibody responses to the receptor binding domain of SARS-CoV-2 spike protein in COVID-19 patients. *Science Immunology* 2020;5(52):eabe0367. doi: 10.1126/sciimmunol.abe0367

Figure 1: Consort diagram for the Panther study. Seroprevalence for the Midlands is estimated from Public Health England data ¹⁴ and from cohabitee data.

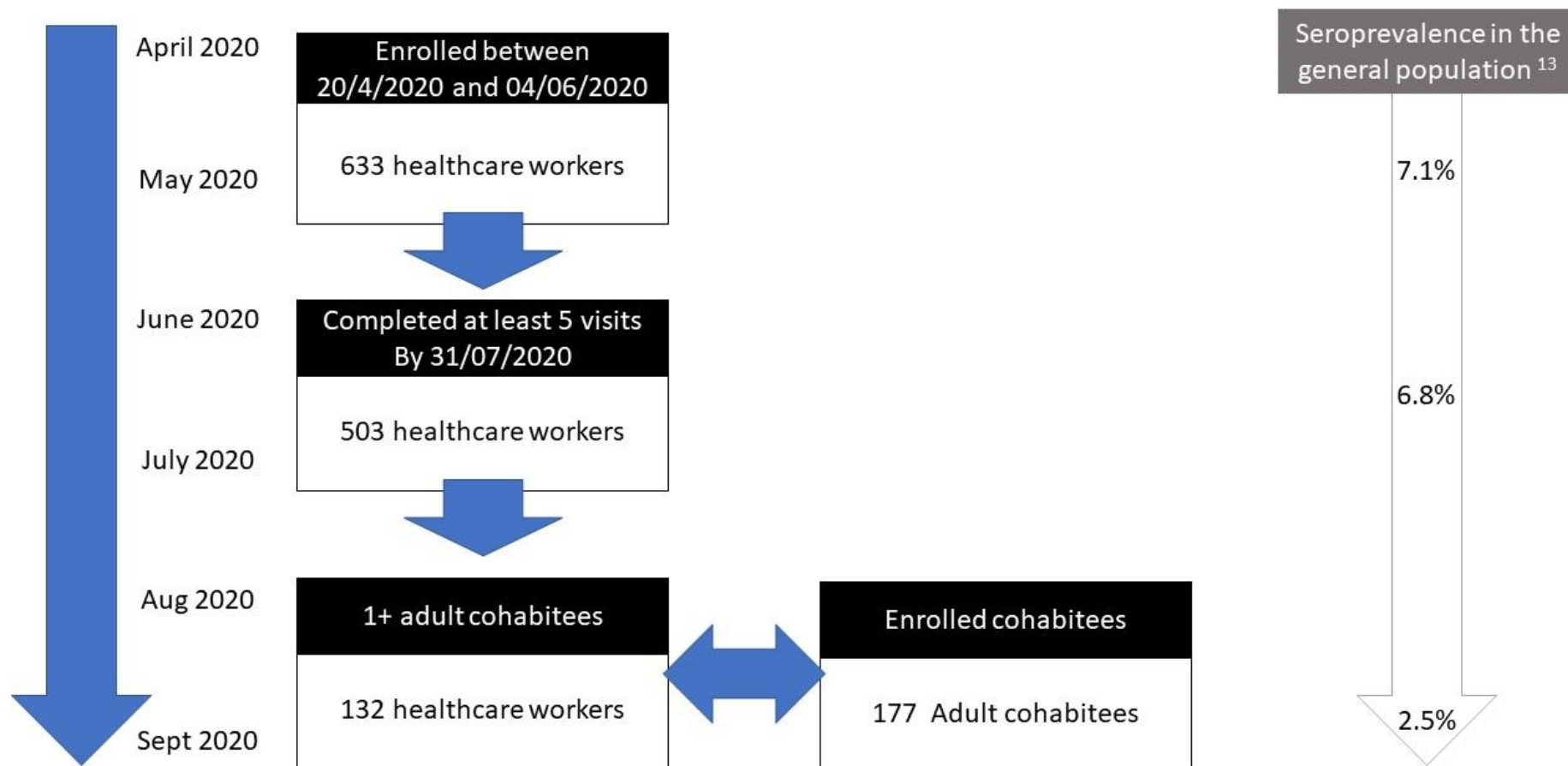
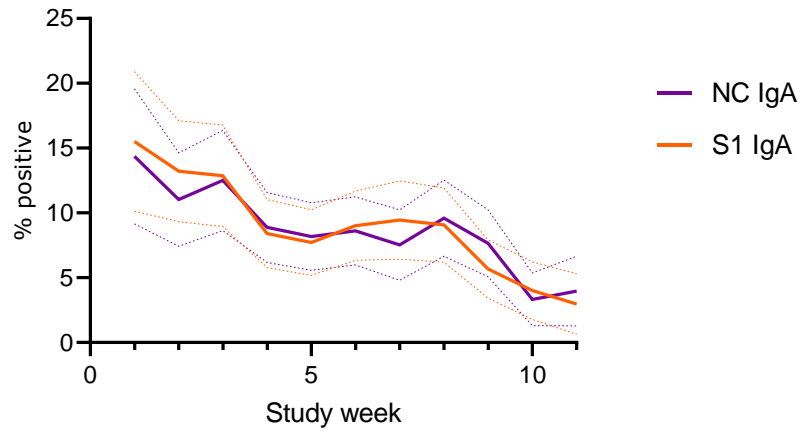
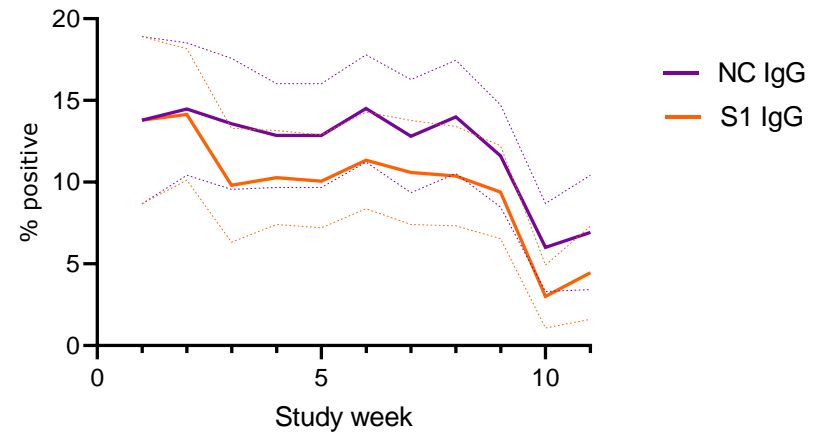


Figure 2: Proportion of participants testing positive to (a) IgA, (b) IgG and (c) IgM and d) Overall. Nuclear capsid rates are in purple and spike protein are in orange.

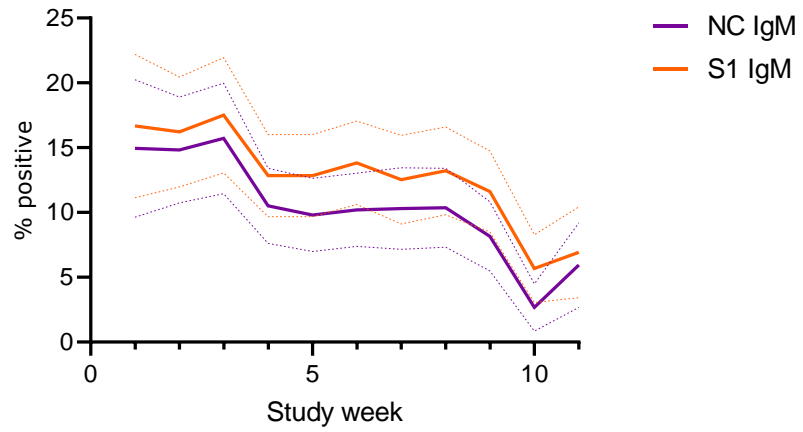
(a)



(b)



(c)



(d)

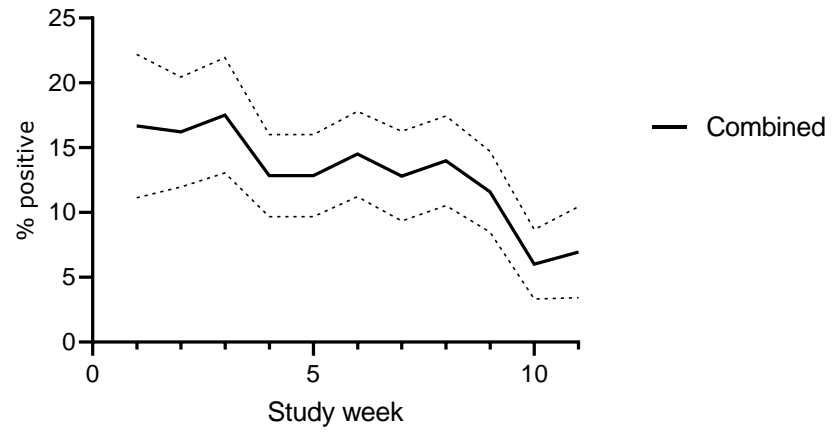


Figure 5: Mean IgG NC and S1 and serial values in relation to developing neutralising antibodies. Blue represents participants who achieved 50% or greater neutralisation while red represents those who did not.

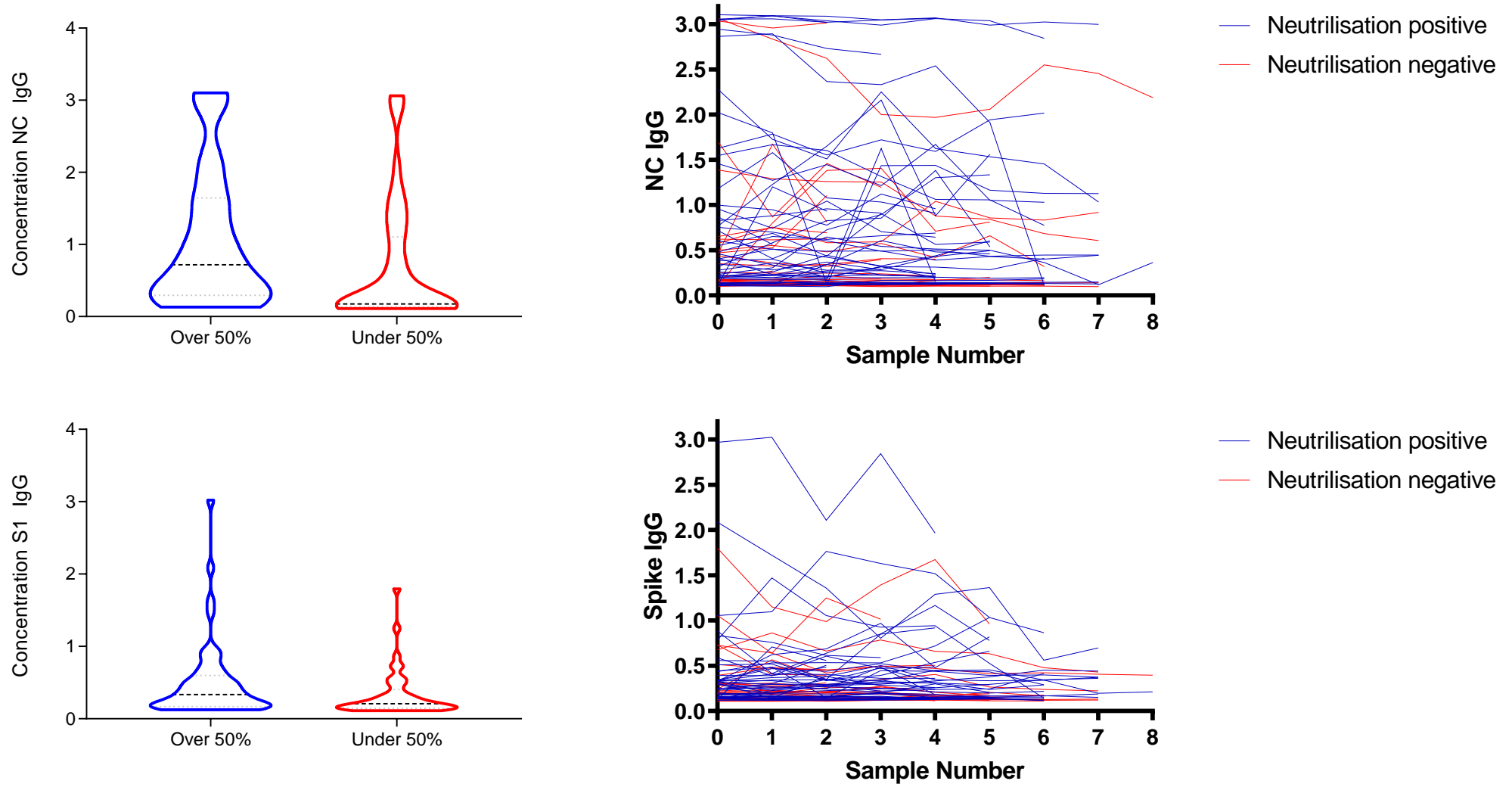
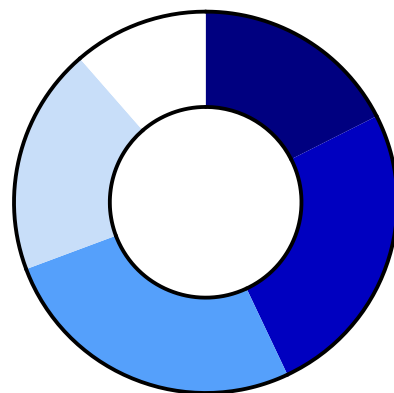


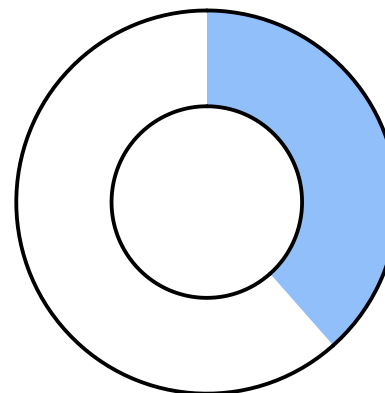
Figure 6: Potency of neutralising antibodies produced in A) Healthcare workers and B) cohabittees

A)



Total=114

B)



Total=13

