



36 **Abstract**

37 Maintaining high levels of daily activity and physical capability have been proposed as  
38 important constituents to promote healthy brain and cognitive aging. Studies investigating the  
39 associations between brain health and physical activity in late life have, however, mainly been  
40 based on self-reported data or measures designed for clinical populations. In the current study,  
41 we examined cross-sectional associations between physical activity, recorded by an ankle-  
42 positioned accelerometer for seven days, physical capability (grip strength, postural control,  
43 and walking speed), and neuroimaging based surrogate markers of brain health in 122 healthy  
44 older adults aged 65-88 years. We used a multimodal brain imaging approach offering two  
45 complementary structural MRI based indicators of brain health: white matter diffusivity and  
46 coherence based on diffusion tensor imaging and subcortical and global brain age based on  
47 brain morphology inferred from T1-weighted MRI data. The analyses revealed a significant  
48 association between global white matter fractional anisotropy (FA) and walking speed,  
49 indicating higher white matter coherence in people with higher pace. We also found a  
50 significant interaction between sex and brain age on number of daily steps, indicating  
51 younger-appearing brains in more physically active women, with no significant associations  
52 among men. These results provide insight into the intricate associations between different  
53 measures of brain and physical health in old age, and corroborate established public health  
54 advice promoting physical activity.

55

56

57 \* **Keywords:** Neuroimaging, brain aging, physical activity, physical capability, MRI

58

59

60

61

62

63

64

65

66

67 **1. Introduction**

68 Magnetic resonance imaging (MRI) studies have revealed substantial age-related changes in  
69 the human brain, including cortical and subcortical atrophy, ventricular enlargement, and  
70 white matter alterations (Fjell et al., 2009; Garde et al., 2000; Westlye et al., 2010; Ylikoski et  
71 al., 1995). While group analysis suggests robust effects, studies have revealed considerable  
72 heterogeneity across individuals and brain structures (Allen et al., 2005; Fjell et al., 2013; Raz  
73 et al., 2010; Sexton et al., 2014; Tucker & Stern, 2011). As further understanding of the  
74 complexity and biological basis of brain and cognitive aging evolves, more targeted  
75 preventive measures and innovative models of geriatric care is expected to be developed as  
76 part of public health programs.

77 Physical health indicators, such as daily activity level, balance, walking speed, and  
78 hand-grip strength, are associated with healthy aging (Kuh, 2007; Vermeulen et al., 2011),  
79 and represent a putative malleable moderator of brain aging. A number of studies have  
80 reported positive associations between these indicators and the volume and integrity of brain  
81 white and gray matter structures (Bherer et al., 2013; Erickson et al., 2014), including the  
82 subcortical areas hippocampus (Erickson et al., 2014; Hamer et al., 2018) and the cerebellum  
83 (Chen et al., 2015; Surgent et al., 2019). However, most previous studies are limited by the  
84 use of self-report measures of physical activity, including mainly clinical populations or  
85 assessment tools primarily designed for clinical populations (Demnitz et al., 2018), which  
86 may not be sensitive to detect relevant individual differences among healthy adults. Among  
87 the exceptions, a study of healthy adults aged >80 years reported an association between high  
88 levels of accelerometer-measured daily steps and global fractional anisotropy (FA) (Tian et  
89 al., 2015), which is an indicator of overall white matter coherence based on diffusion tensor  
90 imaging (DTI). An association has also been found between temporal and parahippocampal  
91 white matter FA and accelerometer-measured daily steps in low-active adults aged 60-78  
92 years reporting less than 150 minutes of moderate physical activity per week (Burzynska et  
93 al., 2014). Sex differences in beneficial effects of physical activity on brain health have also  
94 been reported. For example, higher number of accelerometer-measured daily walking steps  
95 was related to larger surface area in subregions of the hippocampus in women but not in men  
96 (Varma et al., 2016).

97 Recent advances in MRI analysis and machine learning have shown that complex,  
98 multidimensional brain imaging data can be aggregated into a sensitive, unitary estimate of  
99 brain aging (Cole & Franke, 2017; Franke et al., 2010). Estimated high brain age compared to  
100 chronological age (brain age gap; BAG) in older adults has been suggested to indicate

101 incipient neurodegeneration (Franke & Gaser, 2019) and increased risk of dementia (Wang et  
102 al., 2019). Brain age prediction and similar data-driven approaches provide innovative  
103 imaging based surrogate markers of brain health, with promising potential to translate  
104 complex neuroscience data to more comprehensible public health guidelines, thus bridging  
105 the gap between public health and science. The World Health Organization describes  
106 improved understanding of analytical approaches for healthy aging a priority of action,  
107 including development of biomarkers related to healthy aging (World Health Organization,  
108 2015). To our knowledge, only a few prior studies have investigated the link between BAG  
109 and physical activity and capabilities (Cole et al., 2018; Steffener et al., 2016), and only one  
110 included objective measures like hand-grip strength and walking speed (Cole & Franke,  
111 2017). Overall, the evidence linking objective measures of physical health and indicators of  
112 brain health is conflicting or lacking, both with regard to white matter microstructure (Kilgour  
113 et al., 2014; Wassenaar et al., 2019) and BAG based on gray matter morphology. In addition,  
114 it is not clear to which degree T1-weighted structural MRI measures and DTI-based markers  
115 of white matter coherence show differential sensitivity to physical health in ageing men and  
116 women.

117         The purpose of the current study was to examine the association between objective  
118 measures of physical activity level and capability, and two complementary structural MRI  
119 based indicators of brain health: white matter coherence based on DTI and BAG based on  
120 brain morphology. We included 122 (62% women) community-dwelling healthy middle-aged  
121 and older adults aged 65-88 years. Physical activity was measured using ankle-worn  
122 accelerometer across on average 7 days (range 3 to 9) and physical capabilities were  
123 operationalized through grip strength, walking speed, and postural control as a measure of  
124 balance. Based on recent implementations and the use of an independent training set, we  
125 estimated individual brain age using global and subcortical gray matter from T1-weighted  
126 MRI (de Lange & Cole, 2020; de Lange et al., 2019; Kaufmann et al., 2019). We used an  
127 independent training set comprising MRI data from 2407 healthy individuals for brain age  
128 prediction, and applied the cross-validated models in our unseen test set. In addition, to  
129 complement the brain age approach we included DTI-based global fractional anisotropy (FA)  
130 and mean diffusivity (MD).

131         Based on the putative close link between brain and physical health, we hypothesized  
132 that level of physical activity, hand-grip strength, walking speed, and postural control, would  
133 be associated with BAG, both estimated using global and subcortical measures, and global FA  
134 and MD. Moreover, based on previous evidence we tested for sex differences in the

135 associations between physical health indicators and brain MRI measures, as well as  
136 differences in the sensitivity to the physical health indicators between the brain gray and  
137 white matter measures.

138

## 139 **2. Materials and methods**

### 140 2.1. Participants

141 Data collection was performed as an integrated part of the prospective StrokeMRI study  
142 aiming at identifying predictors of brain and cognitive health, aging and stroke rehabilitation  
143 (Dørum et al., 2016; Dørum et al., 2017; Richard et al., 2018). Briefly, healthy adults were  
144 recruited from the Oslo area in Norway through advertisements in local papers and by word of  
145 mouth, and screened for eligibility through a standardized phone interview before inclusion.  
146 Participants reporting counter-indication for MRI, history of severe psychiatric or  
147 neurological conditions, for example epilepsy, brain tumour or head trauma with loss of  
148 consciousness for more than two minutes, and/or alcohol/drug abuse, were excluded.

149 All participants (n=341, 18-94 years) completed demographic information,  
150 standardized questionnaires, including for example mood, personality, and sleep habits, a  
151 comprehensive cognitive test battery (Richard et al., 2018), clinical and medical assessments,  
152 and multimodal structural and functional MRI. In the current study we included participants  
153 aged 65 years or older who additionally completed standardized physical tests and  
154 accelerometer assessment.

155 Among a total of 131 eligible participants, nine were excluded due to poor quality on  
156 T1-weighted data (n=5), not completing the MRI protocol (n=3), or not completing the tests  
157 of physical capability and physical activity (n=1), reducing the number of participants to  
158 n=122, with an average age of 71.4 years (SD=4.61, 64-88 years, 62% women). No  
159 participants scored below 24 on the Mini-Mental State Examination (MMS-E) (Folstein et al.,  
160 1975). For the current sample, the median interval between MRI and the neuropsychological  
161 and physical tests was 11 days (IQR= 14.75 days).

162 The study was completed in accordance with the Helsinki Declaration and approved  
163 by the Regional Committees for Medical and Health Research Ethics for the South-Eastern  
164 Norway (REK approvals 2014/694, 2015/1282). All participants provided written informed  
165 consent. The participants received compensation for participation in the study.

166

### 167 2.2. Cohort used for training set in brain age prediction

168 The training sample consisted of data from 2407 healthy individuals aged 18-94 years from  
169 six different samples (Supplementary Table 1, Supplementary Fig. 1). The participants had  
170 been recruited and screened in line with local procedures (Supplementary Table 2), in general  
171 ensuring that the participants did not have any contraindications for MRI, or a previous or  
172 current serious neurological or psychiatric condition, drug abuse, or head trauma.

173

### 174 2.3. Measures of physical activity and capability

175 Four measures of physical activity and capability were considered, including daily step count,  
176 postural control, walking speed, and hand-grip strength.

177 A calibrated StepWatch Activity Monitor (The Modus StepWatchTM3 Activity  
178 Monitor) assessed physical activity level. The StepWatch was placed above the ankle and  
179 calibrated according to the participant's height and weight. The instructions for use included  
180 wearing the monitor for seven consecutive days, all waking hours, while conducting regular  
181 daily activities. Exceptions included bathing or showering. The StepWatch records number of  
182 steps taken per one-minute sampling period from one leg. Results were doubled to capture the  
183 number of steps taken by each participant (Doherty et al., 2017). According to regular  
184 procedures for calculation of activity level, a day was considered valid if consisting of  
185 minimum 600 minutes recordings (Mâsse et al., 2005). Non-wear time was defined as >90  
186 consecutive minutes of zero counts. A deviation from this rule was if there was a period of  
187 maximum two minutes with more than zero counts within a 90 minutes period with non-wear.  
188 The 30 minutes before and after this interruption needed to be consistently zero counts. A  
189 minimum of three valid days of data per participant were required for the analysis (Jefferis et  
190 al., 2014; Mudge et al., 2010). Valid StepWatch data was available from all 122 participants,  
191 who in average wore the StepWatch for 859 minutes per day (Standard Deviation [SD] =  
192 66.4), ranging between 3 and 9 days, with a median of 7 days.

193 Postural control, registered through measurement of centre of pressure, was assessed  
194 using a force plate (BTrackS Balance Tracking System Inc. San Diego, CA, USA, 25 Hz).  
195 The protocol for measuring centre of pressure was based on recommendations from Low and  
196 colleagues (2017), with double leg stance and 60 second durations of each trial. The balance  
197 board was turned towards and 20 cm away from a wall to prevent the participant from turning  
198 his or her head or eyes during testing. The participants were asked not to voluntarily move, to  
199 keep their hands on their hips, and to position their feet with shoulder-width separation. The  
200 data were filtered with a dual-order low pass Butterworth filter with a cut-off frequency of 4

201 Hz. The average of three trials with eyes closed were used to calculate the mean velocity in  
202 cm per second.

203 Comfortable gait speed was assessed using Timed 10-Meter Walk Test (10 MWT)  
204 (Bohannon et al., 1996; Studenski et al., 2011; Wolf et al., 1999). The middle six metres were  
205 timed, excluding the effect of acceleration and deceleration, and converted to meter per  
206 second. Dominant hand grip strength, expressed in kilograms (kg), was measured with a  
207 Jamar hand dynamometer (Sammons Preston Inc., Bolingbrook, IL) with the use of the  
208 second handle position for optimal performance. Standard procedure for hand-grip strength  
209 test was followed, with the participants in a seated position and elbow-joint fixed in a 90  
210 degrees flexion (Mathiowetz et al., 1984). For both walking speed and hand-grip strength, the  
211 average of three trials were considered.

212

#### 213 2.4. MRI acquisition, processing and analysis

214 Participants were scanned with a 3T General Electric (GE) 750 Discovery MRI scanner using  
215 identical sequences and a 32-channel head coil at Oslo University Hospital, Norway.

216 Cushioning was used to minimize head motion.

217 T1-weighted images were obtained using an inversion recovery-fast spoiled gradient  
218 echo (BRAVO) sequence with echo time (TE) = 3.18 ms, repetition time (TR) = 8.16 ms,  
219 field of view (FOV) = 256 mm x 256 mm, flip angle (FA) = 12°, and voxel size (VS) = 1x1x1  
220 mm. The images were acquired in sagittal plane, and it took 4.43 minutes to acquire 188  
221 slices. A detailed description of image acquisition for the training samples is provided in  
222 Supplementary material Table 3.

223 DTI data were obtained using an echo planar imaging (EPI) sequence with 60 unique  
224 directions, b-value of 1000 s/mm<sup>2</sup>, TE= 83.1 ms, TR = 8150 ms, FA= 90°, FOV = 128 x 128  
225 mm, 2 mm isotropic voxels, and 5 b=0 volumes. Scan time was 8:58 minutes. 7 b=0 volumes  
226 with reversed phase-encoding direction were also obtained.

227 FreeSurfer 5.3 (<http://surfer.nmr.mgh.harvard.edu/>) was used for automated surface-  
228 based morphometry and subcortical segmentation of the T1-weighted images, providing  
229 measures of cortical thickness, area, and volume, as well as the volumes of subcortical  
230 structures. Technical details of the procedures are described in prior publications (Dale et al.,  
231 1999; Fischl et al., 2002). A visual quality-check of reconstructions and subsequent  
232 correction, if required, was performed for the StrokeMRI data. The training samples,

233 consisting of data from multiple sites, were all quality checked using FreeSurfer's Euler  
234 number as a proxy (Rosen et al., 2018).

235 DTI data were processed using Oxford Centre for Functional Magnetic Resonance  
236 Imaging of the Brain (FMRIB) Software Library (FSL) (<https://fsl.fmrib.ox.ac.uk/fsl>). Using  
237 topup (<https://fsl.fmrib.ox.ac.uk/fsl/fslwiki/topup>) and eddy  
238 (<https://fsl.fmrib.ox.ac.uk/fsl/fslwiki/eddy>), we corrected for motion, eddy currents, and  
239 geometrical distortions (based on the b=0 volumes collected with a reversed phase-encoding  
240 direction) in an integrated stream (Andersson & Sotiropoulos, 2016) which also includes  
241 identification and replacement of outlier slices (Andersson et al., 2016). The resulting  
242 corrected datasets were used to estimate FA and MD using *dtifit* in FSL.

243 Further processing was performed using Tract-Based Spatial Statistics (TBSS) (Smith  
244 et al., 2006). Here, a skeletonized map was generated by thinning the mean FA map across  
245 participants. The mean FA skeleton was thresholded at  $FA > 0.2$  and then projected onto the  
246 normalized FA maps. The same transformation was applied for MD, resulting in voxel-wise  
247 FA and MD skeletons for each participant. Using these maps, representing the core of major  
248 white matter pathways, we computed mean global FA and MD for each individual.

249

## 250 2.5. Brain age prediction

251 In line with a recent implementation (Kaufmann et al., 2019), age prediction models were  
252 trained using XGBoost (extreme gradient boosting) in R (Chen and Guestrin 2016; Chen et  
253 al., 2017) based on cortical volume, thickness, and area (Glasser et al., 2016), as well as  
254 subcortical volumes (Fischl et al., 2002) as features, totalling 1118 features for each  
255 individual (Kaufmann et al., 2019). We trained the models separately for each sex, ensuring  
256 that possible sex-related differences in brain aging did not influence the results. Parameters  
257 were tuned in a nested cross-validation that estimated the optimal number of model training  
258 iterations (settings:  $nround = 1500$ , early stopping rounds = 20). The learning rate was set to  
259  $\eta = 0.01$  while all other parameters were left as default. To comply with the notion of  
260 heterogeneous brain aging we trained two different brain age models, one for the full brain,  
261 including all features, and one for cerebellar/ subcortical features alone (Kaufmann et al.,  
262 2019). The models were validated with 10-fold cross validation. Finally, the two models were  
263 applied to calculate brain age for each individual in the unseen test sample ( $n=122$ ).

264 To account for a well-known bias in age prediction we used a described procedure (de  
265 Lange & Cole, 2020). First, we calculated the difference between estimated brain age and



266 chronological age. Next, we estimated the association between BAG and age using linear  
267 models including age and sex in the models. The beta representing this bias was then  
268 subtracted from the estimated age, yielding a corrected brain age for each individual.  
269 Chronological age was subtracted from this corrected brain age, and the resulting BAG was  
270 used to test for associations with measures of physical activity and capability.

271

## 272 2.6. Statistical analysis

273 Statistical analyses were performed using R, version 3.6.2 (R Core Team, 2019). Data from  
274 the StepWatches were analysed with an in-house script, calculating mean (SD) daily activity.  
275 Descriptive data are presented as mean (SD) or median (IQR), as appropriate. Due to the use  
276 of multidimensional measures of physical activity and capability, and to examine to which  
277 degree the measures reflect differentiable components, bivariate associations between  
278 measures were examined using Kendall's tau. The same test of correlation was also used to  
279 test for various associations between physical activity, physical capability, sample  
280 characteristics, age, and body mass index (BMI). Sex differences in the physical measures  
281 were examined using Wilcoxon Rank Sum Test or two-sample t test, as appropriate. To test  
282 for interactions between age and sex on the physical measures, Bayes Factor was computed as  
283 implemented in the BayesFactor package in R (Richard & Rouder, 2018) and used to compare  
284 models with and without the interaction term. To validate the estimation of brain age in the  
285 training set, a 10-fold cross validation was used for men and women separately. Further,  
286 correlation between estimated and chronological age for the test-set was assessed divided by  
287 sex, and finally the association between the BAGS, global FA and MD and age were assessed.

288 Multiple linear regression analyses were performed using `lm` in R to test for  
289 associations between physical activity and physical capability and BAGs and white matter  
290 integrity. For each MRI variable (global and subcortical BAG, global MD and global FA)  
291 each of the physical activity and capability variables (daily number steps, grip strength, 10  
292 MWT, and postural control) were included as dependent variables in different linear models,  
293 with the MRI measure and age and sex as independent variables. Regression diagnosis for  
294 influential cases on the models were performed using Cook's distance. The results indicated  
295 that no cases were overly influential on the results. To explore the association between  
296 physical activity and capability and structural brain health further, we ran the regression  
297 analysis adding an interaction term between each MRI variable and sex, testing for interaction  
298 effect between sex and structural brain health on the physical measures.

299 Using Fisher z-transformation of the standardized coefficient from the different  
 300 models, we tested if BAG and DTI measures showed differential associations with the  
 301 physical health indicators (daily steps, walking speed, hand-grip strength, and postural  
 302 control). For transparency, we report both uncorrected and corrected p-values. The  
 303 significance threshold was set at  $p < .05$ , and for corrected p-values, we employed a  
 304 Bonferroni correction method. Bayes Factor was also reported alongside p-values for all  
 305 models in order to quantify the evidence for the null hypothesis, in line with recent  
 306 recommendations (Keysers et al., 2020).

307

### 308 3. Results

#### 309 3.1. Sample characteristics

310 Table 1 summarizes demographic and clinical characteristics. Average years of education was  
 311 15.7 (SD=3.45), ranging from 8 to 27 years. Mean BMI was 24.9 (SD=3.38), ranging from  
 312 17.2 to 38.1. Median MMSE score was 29 (IQR= 2), ranging from 24 to 30.

313

**Table 1.** Characteristics of the StrokeMRI sample.

	All	Women	Men	r with age (p) [all]	r with age (p) [women]	r with age (p) [men]
N	122	75	47			
Age	71.35 (4.61)	70.17 (3.75)	73.24 (5.23)			
Education, years	15.71 (3.45)	15.55 (3.15)	15.98 (3.91)	0.07 (.302)	0.00 (.963)	0.09 (.388)
MMS-E (median, IQR)	29 (2)	29 (2)	29 (1.5)	-0.08 (.224)	-0.05 (.534)	-0.25 (.028) *
BMI, kg/m <sup>2</sup>	24.94 (3.38)	24.72 (3.69)	25.30 (2.82)	-0.02 (.733)	-0.05 (.522)	-0.06 (.557)
Global FA	0.47 (0.02)	0.46 (0.02)	0.47 (0.02)	-0.17 (.006)*	-0.23 (.003)*	-0.07 (.474)
Global MD	742.32 (25.35)	742.25 (23.18)	742.43 (28.74)	0.20 (.001)*	0.29 (<.001)*	0.08 (.409)
Wear time SAM (minutes)	853.50 (68.27)	858.35 (65.36)	845.60 (72.80)	-0.10 (.104)	-0.08 (.325)	-0.09 (.394)
Total steps/day	12088.76 (3666.72)	12549.58 (3696.94)	11337.43 (3527.98)	-0.13 (.041)*	-0.08 (.301)	-0.09 (.384)
Hand-grip strength, kg	32.63 (9.92)	26.35 (4.72)	42.51 (7.64)	0.10 (.116)	-0.06 (.425)	-0.12(.226)
Postural control, cm/sec (median, IQR)	1.49 (0.85)	1.32 (0.59)	1.87 (1.31)	0.08 (.189)	0.00 (.993)	-0.07 (.521)
Walking speed, m/s	1.41 (0.19)	1.44 (0.18)	1.36 (0.19)	-0.12 (.048) *	-0.10 (.188)	-0.10 (.336)

*Note.* If not specified, data is reported as mean (SD), r: Kendall tau correlation coefficient, IQR: inter-quartile range, BMI: Body Mass Index, SAM: Step Activity Measure, FA: fractional anisotropy, MD: mean diffusivity. MD was multiplied with 10<sup>6</sup> to increase precision in the reporting.

\*Significant associations with  $p < .05$ .

314

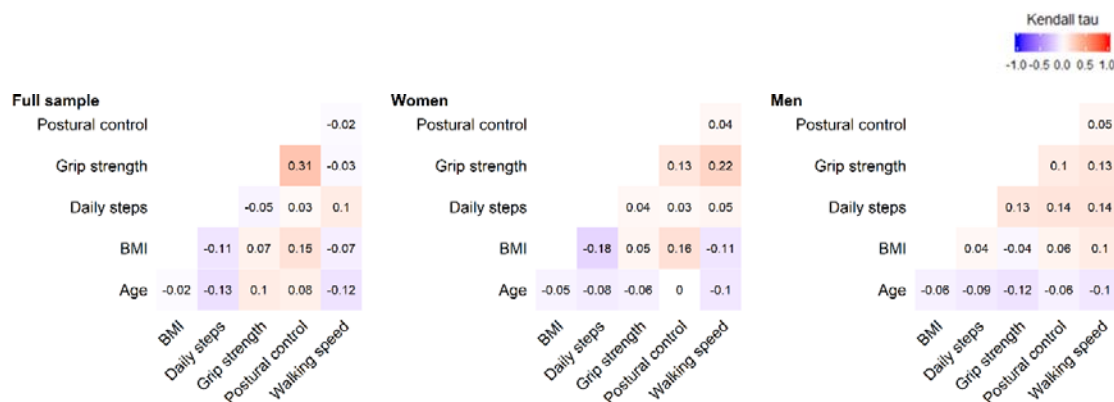
315 3.2. Physical capability and physical activity level

316 Table 1 summarizes the physical capability and activity measures. Mean hand-grip strength  
 317 was 32.6 kg (SD=9.92). Men had a significantly greater hand-grip strength (mean 42.5 (SD =  
 318 7.64) kg) compared to women (mean 26.3 (SD = 4.7) kg;  $t = -13.0, p < .001$ ). Median  
 319 postural control was 1.32 (IQR = 0.59) cm/sec. Women (median 1.41 (IQR = 0.53) cm/s)  
 320 exhibited significant less postural control than men (median 1.87 (IQR = 1.31) cm/s;  $W =$   
 321 807;  $p < .001, r = -.455$ ). Average walking speed was 1.41 (SD = 0.19) m/s, with women  
 322 (1.44 (SD = 0.18) m/s) having a significantly higher average speed than men (1.35 (0.19)  
 323 m/s.;  $t = 2.48, p = .015$ ). The participants had an average of 12088.8 (SD = 3666.72) steps per  
 324 day, with no significant sex differences ( $t = 1.8, p = 0.08$ ).

325 Bivariate correlation analysis revealed weak relationships between the various  
 326 physical test performances, age, and BMI (Fig. 1). In addition, Bayes Factor suggested no  
 327 evidence of interactions between age and sex on walking speed (BF=0.21,  $\pm 4.34\%$ ), daily  
 328 steps (BF = 0.40,  $\pm 1.9\%$ ), hand-grip strength (BF = 0.64,  $\pm 2.13\%$ ), or postural control (BF =  
 329 0.11,  $\pm 6.82\%$ ).

330

331



332

333 **Fig. 1.** Correlations (Kendall tau) between the physical measurements. Heatmaps showing the associations  
 334 between the measures of physical capability and activity for the full sample (N = 122), among women (N = 75)  
 335 and among men (N= 47).

336

337

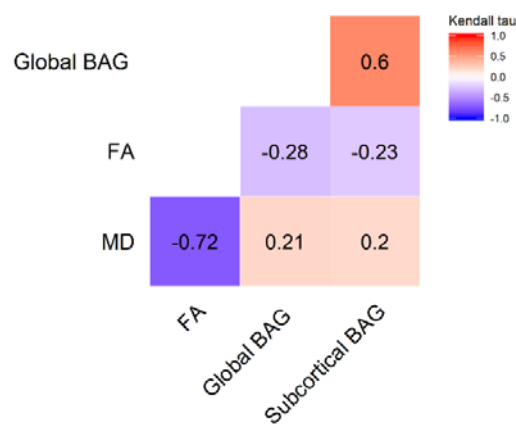
338

339 3.3. Brain age prediction

340 In the training set, 10-fold cross validation revealed a correlation of  $r = 0.90$  for both men and  
341 women ( $p < .001$ ) between estimated brain age from the full brain model and chronological  
342 age (men: MAE = 6.82, RMSE = 8.49, women: MAE = 6.64, RMSE = 8.47). The subcortical  
343 model yielded a correlation of  $r = 0.87$  for both men and women ( $p < .001$ , Men: MAE = 7.49,  
344 RMSE = 9.62, Women: MAE = 7.45, RMSE = 9.54). In the test set, the correlation between  
345 estimated and chronological age for the full model for men was  $r = 0.32$  ( $p = .002$ , MAE =  
346 6.44, RMSE = 7.59) and  $r = 0.34$  ( $p < .001$ , MAE = 6.93, RMSE = 8.53) for women. The  
347 subcortical model yielded a correlation of  $r = 0.28$  ( $p = .005$ , MAE = 7.90, RMSE = 9.39) for  
348 men, and  $r = 0.26$  ( $p < .001$ , MAE = 6.94, RMSE = 8.54) for women.

349 Fig. 2 shows the association between the BAGs and DTI measures.

350



351

352 **Fig. 2.** Correlation matrix of the brain imaging measures (Kendall tau) indicating their shared variance.

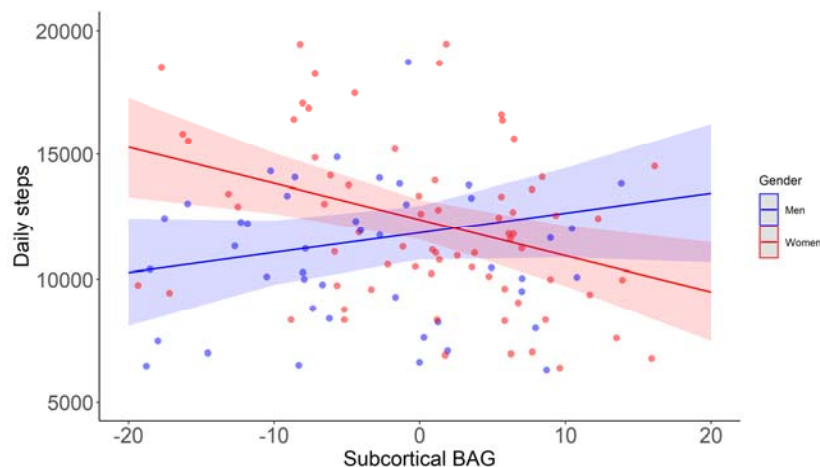
353

354 3.4. Association between physical activity, physical capability and BAG

355 Table 2 summarizes the results from the linear models testing for associations between BAG  
356 and measures of physical activity and capability. No significant associations were found after  
357 correcting for multiple comparisons, with Bayes Factors generally suggesting equivocal to  
358 low evidence for the models not including BAGs compared to the models including BAGs.

359 Models including subcortical BAG by sex interactions revealed a significant main  
360 effect of daily steps ( $\beta = -0.35$ ,  $p = .003$ ), indicating lower subcortical BAG in people with a  
361 higher number of daily steps, and a significant interaction between subcortical BAG and sex  
362 ( $\beta = 0.34$ ,  $p = .003$ ), with Bayes Factor suggesting strong evidence for the model including the  
363 interaction term (BF = 16.51,  $\pm 1.63\%$ ) (Supplementary Table 4). Follow-up analyses

364 revealed a significant association between subcortical BAG and number of steps among  
365 women ( $\beta = -0.34, p = .003$ ), but not among men ( $\beta = 0.20, p = 0.172$ ) (Fig. 3). For the  
366 remaining models, including the interaction term did not change the results, with Bayes Factor  
367 in general suggesting equivocal to low evidence for the models not including interaction  
368 effects.  
369  
370



371  
372  
373  
374  
375

**Fig. 3.** Associations between daily steps and subcortical BAG among men and women.

### 376 3.5. Association between physical activity, physical capability and DTI measures

377 Supplementary Fig. 2 shows the association between age and DTI measures. Global FA ( $r_{\tau} = -$   
378  $0.17, p < .006, BF = 7.85, \pm 0\%$ ) and MD ( $r_{\tau} = 0.20, p < .001, BF = 29.45, \pm 0\%$ ) were  
379 significantly associate with age.

380 Table 3 summarizes the results from the linear models testing for associations between  
381 the DTI measures and the various measures of physical activity and capability. After  
382 correction for multiple comparisons, linear models revealed a significant positive association  
383 between global FA and walking speed ( $\beta = 0.25, p = .006, BF = 7.5, \pm 2.72\%$ ), with the model  
384 including FA being preferred by Bayes Factor. The results are indicating higher average pace  
385 with higher FA. For walking speed, Bayes Factor also suggested moderate evidence for the  
386 model including global MD compared to the model including only age and sex, indicating  
387 higher walking speed with lower MD. This association did not remain significant after  
388 correction for multiple comparisons ( $\beta = -0.24, p = .01, BF = 5.05 \pm 2.73\%$ ). No other  
389 significant associations were found, with Bayes Factors generally suggesting equivocal to low

390 evidence for the models not including DTI-measures compared to the models including DTI-  
391 measures, and with similar results when adding the interactions with sex (Supplementary  
392 Table 5).

393

394

395 3.6. Differences in sensitivity between the various imaging results

396 Fisher z-transformation indicated differences in the associations between walking speed and  
397 FA compared to global BAG ( $t = 3.35, p = .001$ ), subcortical BAG ( $t = 3.48, p = .001$ ), and  
398 MD ( $t = 3.8, p < .001$ ). No other robust differences were found in the associations between  
399 physical activity or physical capability between the different imaging modalities  
400 (Supplementary Table 6).

401 **Table 2.** Results of linear models examining the association between physical activity and capability and brain age.

	Daily steps			Walking speed			Hand-grip strength			Postural control		
	$\beta$	$p$	BF (error %)	$\beta$	$p$	BF (error %)	$\beta$	$p$	BF (error %)	$\beta$	$p$	BF (error %)
Age	-0.19	<b>.041*</b>	-	-0.15	.103	-	-0.13	.021	-	-0.08	.360	-
Sex [Male]	-0.11	.254	-	-0.19	<b>.039*</b>	-	0.82	<b>&lt;.001**</b>	-	0.44	<b>&lt;.001**</b>	-
Global BAG	-0.07	.468	0.33 ±1.84	-0.17	.053	1.42 ±2.7	-0.12	<b>.033*</b>	2.20 ±2.95	-0.13	.120	0.85±1.82
R <sup>2</sup>	0.08			0.10			0.66			0.23		
F	2.68 (p=.05)			4.34 (p=.006)**			76.90 (p<.001)**			10.38 (p<.001)**		
Age	-0.2	<b>.037*</b>	-	-0.15	.101	-	-0.13	<b>.024*</b>	-	-0.08	.361	-
Sex [Male]	-0.12	.195	-	-0.2	<b>.030*</b>	-	0.83	<b>&lt;.001**</b>	-	0.44	<b>&lt;.001**</b>	-
Subcortical BAG	-0.13	.141	0.34 ±1.83	-0.19	<b>.033*</b>	2.05 ±2.06	-0.08	.156	0.72 ±2.62	-0.12	.161	0.71 ±1.41%
R <sup>2</sup>	0.15			0.11			0.66			0.21		
F	3.27 (p=.024)*			4.64 (p=.004)**			74.41 (p<.001)**			10.19 (p<.001)**		

402 *Note:*  $\beta$  = standardized coefficients. Bayes Factor (BF) was estimated using BayesFactor package in R, and represent the evidence of the full model against null model. Null model: dependent  
403 variable ~ age + sex.

404 \*Significant associations with p<.05

405 \*\*Significant associations after Bonferroni correction.

406  
407  
408  
409  
410  
411  
412  
413  
414  
415  
416  
417  
418  
419

420 **Table 3.** Results of linear models examining the association between physical activity and capability and DTI measures.

	Daily steps			Walking speed			Hand-grip strength			Postural control		
	$\beta$	<i>P</i>	BF (error %)	$\beta$	<i>p</i>	BF (error %)	$\beta$	<i>p</i>	BF (error %)	$\beta$	<i>p</i>	BF (error %)
Age	-0.17	.080	-	-0.08	.373	-	-0.11	.067	-	-0.11	.218	-
Sex [Male]	-0.11	.244	-	-0.19	<b>.036*</b>	-	0.83	<b>&lt;.001**</b>	-	0.47	<b>&lt;.001**</b>	-
FA	0.1	.270	0.48±1.80	0.25	<b>.006**</b>	7.70 ±2.02%	0.08	.166	0.66 ±2.81	-0.12	.176	0.62 ±1.56
R <sup>2</sup>	0.07			0.13			0.66			0.20		
F	2.93 ( <b>p=.037</b> )			5.73 ( <b>p= &lt;.001</b> )			74.53( <b>p=&lt;.001</b> )			10.13 ( <b>p=&lt;.001</b> )		
Age	-0.16	.094	-	-0.08	.427	-	-0.12	<b>.046*</b>	-	-0.12	.178	-
Sex [Male]	-0.11	.235	-	-0.2	<b>.034*</b>	-	0.84	<b>&lt;.001**</b>	-	0.47	<b>&lt;.001**</b>	-
MD	-0.1	.266	0.48 ±1.82	-0.24	<b>.010*</b>	5.23 ±2.03	-0.03	.654	0.31 ±2.85	0.14	.117	0.81 ±1.53
R <sup>2</sup>	0.07			0.12			0.65			0.21		
F	2.94 ( <b>p=.036</b> )			5.40 ( <b>p=.002</b> )			72.66 ( <b>p=&lt;.001</b> )			10.4 ( <b>p=.001</b> )		

421 *Note:*  $\beta$  = standardized coefficients. Bayes Factor (BF) was estimated using BayesFactor package in R, and represent the evidence of the full model against null model. Null model: dependent  
 422 variable ~ age + sex.

423 \*Significant associations with  $p < .05$

424 \*\*Significant associations after Bonferroni correction.

425



## 426 **4. Discussion**

427 The purpose of the current study was to examine the association between objective measures  
428 of physical activity level and capability, and two complementary structural MRI based  
429 indicators of brain health in healthy older adults. The study focuses on identifying lifestyle-  
430 factors with potential dissimilar protecting effect against gray and white matter changes in the  
431 aging brain. Our study indicates a positive association between daily steps and a younger  
432 appearing brain based on the subcortical model in women, but not in men, with Bayesian  
433 analyses strongly supporting an association. Moreover, our results indicate that a higher  
434 walking speed is associated with more coherent white matter structure as indicated by global  
435 FA, with Bayesian analysis suggesting moderate evidence for the association.

436

### 437 4.1. Daily activity level and brain health

438 Based on the assumption that physical activity promotes brain health in older adults, we  
439 hypothesized that people with higher levels of physical activity would show less evident brain  
440 aging than their peers who are less physically active. In line with this, our analyses revealed  
441 higher subcortical BAG in participants with fewer daily steps. These results support and  
442 extend previous studies (Erickson et al., 2014; Hamer et al., 2018) by demonstrating that the  
443 relationship persists when using brain age prediction and a sensor-based measure of activity  
444 level. The latter is also considered to provide a more valid proxy of activity level than  
445 questionnaires. One explanation for this is that older adults get more daily physical activity  
446 from low-intensity activity (Dyrstad et al., 2014), which may be more difficult to recall than  
447 hours at the gym or other specific events (Guo et al., 2019).

448 Our findings of younger appearing brains in people with higher physical activity levels  
449 could reflect various biological mechanisms. Physical activity has been reported to influence  
450 the levels of neurotropic factors (brain-derived neurotrophic factor (BDNF), Insulin-like  
451 Growth Factor 1 (IGF-1), and Vascular Endothelial Growth Factor (VEGF) (Lee et al., 2014),  
452 which are central for preventing deterioration of neurons. Physical activity also has beneficial  
453 effects for the neurovascular system, as measured using cerebral blood flow and perfusion  
454 (Klenk et al., 2013). Supporting the link between cardiovascular and brain health, higher brain  
455 age in middle-aged and elderly people with cardiovascular risk factors such as high blood  
456 pressure, alcohol intake, and stroke risk score were recently reported, with blood pressure  
457 showing a stronger association with white matter compared to gray matter (de Lange et al.,  
458 2020a).

459 In contrast to previously reported associations between white matter measures and  
460 sensor-measured physical activity (Burzynska et al., 2014; Tian et al., 2015), our analysis  
461 revealed no significant associations between physical activity and global BAG or white matter  
462 DTI. Sample characteristics such as the average and variance in physical activity may partly  
463 explain the discrepancies in results between studies. Our participants had an average of  
464 12,088 steps per day, which is high compared to normative data for adults (mean 2000-9000  
465 steps per day) (Tudor-Locke et al., 2009). In addition, while previous studies assessed  
466 regional effects, our results are based on more global measures of BAG and white matter DTI.  
467 Finally, we used total daily steps as a proxy of overall physical activity, and did not include  
468 intensity or temporal aspects of daily physical activity, which are likely relevant factors.

469 The association between subcortical BAG and daily activity level was only present in  
470 women. This is in line with a former study suggesting an association between total daily  
471 walking with larger hippocampal volume, but only in women (Varma et al., 2015). The results  
472 might be related to the postmenopausal hormonal changes (Dalal & Agarwal, 2015). A recent  
473 study demonstrated that higher estimated levels of sex-hormone exposure was associated with  
474 higher brain age in women (de Lange et al., 2020b). In addition, an interaction between  
475 hormone replacement therapy and fitness on age related decline in gray matter volume has  
476 been demonstrated (Erickson et al., 2007), indicating increased neuroprotective effect of  
477 fitness in combination with hormone replacement treatment for post-menopausal women. Our  
478 current results might also be related to the population studied, but there was no sex difference  
479 in activity level or any other obvious sex differences present. The results, though in line with  
480 previous publications (Barha et al., 2017; Liu-Ambrose et al., 2018; Varma et al., 2016), must  
481 be interpreted carefully and warrant replication in future studies.

482

#### 483 4.2. Physical capability and brain health

484 In the present study we hypothesized that indicators of physical capability such as grip  
485 strength, walking speed, and postural control would associate with structural MRI based  
486 indicators of brain health in healthy older adults. In contrast to a previous study on  
487 participants aged 73 years (Cole & Franke, 2017), we found no significant associations  
488 between walking speed and global or subcortical BAG. However, supporting the hypothesis,  
489 the results demonstrated a positive association between white matter FA and walking speed.  
490 These results are in line with a previously reported association between white matter measures  
491 and a latent variable for physical fitness created from grip strength, forced respiratory volume,

492 and 6-metre walk time, in participants aged 76 years (Ritchie et al., 2017). The association  
493 between coherence of white matter and walking speed could be of importance because of the  
494 possibility that structural brain changes may represent a mediator between physical capability  
495 and cognitive function in senescence. By facilitating swift and synchronised information flow,  
496 brain white matter microstructure has been demonstrated to provide critical support for  
497 cognitive functions (Strömmer et al., 2020). Moreover, maintaining white matter integrity has  
498 formerly been identified as an important predictor for successful cognitive aging (Kennedy &  
499 Raz, 2009). The current study design does not allow for causal inference, and our results do  
500 not necessarily imply that improving walking speed in older age will contribute to a better  
501 brain health, or vice versa. Supporting a possible causal association, a recent large-scale study  
502 utilizing data from UK Biobank identified 70 independent genetic loci with significant  
503 associations with self-reported walking speed. Approximately 10% of the variance in self-  
504 reported walking speed was attributed to individual differences in common genetic variants,  
505 and significant genetic correlations were reported between self-reported walking speed and  
506 cardiometabolic, respiratory and psychiatric traits, educational attainment and mortality.  
507 Further, follow-up Mendelian randomization analyses, which allows for causal inference,  
508 suggested that increasing walking pace decreases cardiometabolic risk, in line with current  
509 public health advice (Timmins et al., 2020). Moreover, a number of studies have reported that  
510 walking speed is a strong predictor of mortality (Cooper et al., 2010; Ganna & Ingelsson,  
511 2015) and a relevant index of “vital aging” (Vermeulen et al., 2011). The results of the present  
512 study substantiate the possible importance of walking speed as a target in public health  
513 interventions, and as a possible index of white matter brain health in older adults.

514 In addition to walking speed, hand-grip strength and postural control has been  
515 suggested as markers of healthy aging due to multiple associations with measures of health  
516 (Bohannon, 2019; Vermeulen et al., 2011). Both strength and postural control dependent on  
517 mechanical contributions from both the muscles-, skeletal, and joint systems (Granacher et al.,  
518 2008), but also visual, vestibular, haptic and proprioceptive information are critical in specific  
519 for maintaining postural control (Alcock et al., 2018). Integration of this information has been  
520 suggested to be partly related to the structure and function of the brain, and potentially be  
521 affected by the aging process in the brain with following reduction of function (Sullivan et al.,  
522 2009). In contrast to this and other previous work (Cole et al., 2018), our analyses revealed no  
523 significant associations between brain MRI and hand-grip strength in a presumably healthy  
524 sample. Former publications including mainly clinical populations have characterized postural  
525 control as a “whole brain phenomenon”, but also highlighted cerebellum as an important

526 region (Surgent et al., 2019). Our results indicated no significant associations between  
527 subcortical or global BAG or DTI measures of brain integrity and postural control. For FA  
528 and MD, this was in line with a previous study reporting weak associations in the postural  
529 control association with regional FA, and a lack of association with MD (Massa et al., 2019).  
530 We are not aware of previous studies testing for associations between subcortical BAG,  
531 including the cerebellum, or global BAG and postural control measured with a forced  
532 pressure platform. However, in relation to former studies highlighting cerebellum as  
533 important structure for postural control, this is also suggested to be a region more implicated  
534 in clinical populations than in healthy ones (Surgent et al., 2019), and this might substantiate  
535 the findings in the present study. The neurobiological underpinning in the brain of variation in  
536 postural control in healthy older adults remains uncertain.

537

#### 538 4.3. Methodological considerations

539 The strengths of our study include objectively measured physical activity, several objective  
540 and sensitive tests of physical capability, and the advanced multimodal imaging approach.

541 Some limitations should also be emphasized. The study sample was relatively  
542 homogenous and high functioning in terms of level of education and physical activity, which  
543 may have limited the sensitivity. With increasing age, it is conceivable that a more selective  
544 and less representative part of the population volunteers for a study including an extensive  
545 protocol including both multimodal MRI and physical and neuropsychological tests. Further  
546 studies are needed to test the generalisability to other populations.

547 The cross-sectional design does not permit inference about brain changes.  
548 Longitudinal studies covering a larger part of the lifespan are required to explore the  
549 dynamics of the associations, for example to which degree the effects of physical activity vary  
550 across the lifespan, and to which degree early intervention may protect against age-related  
551 decline years or decades later.

552

#### 553 4.4. Conclusions

554 In conclusion, we have demonstrated that different markers of brain white matter structure  
555 and brain aging are associated with objectively measured daily activity and physical  
556 capability. The strongest associations were found between subcortical BAG and daily  
557 physical activity, but only for women, and between global white matter FA and walking  
558 speed. While larger longitudinal studies are needed to explore potential causal and long-term

559 effects of physical activity on brain aging, our results suggest that combining multimodal  
560 measures of brain structure provides complementary information and show dissociable  
561 associations with physical activity and capability in elderly healthy adults.

562

### 563 **Acknowledgments and funding**

564 We are very grateful to all those who have participated in the StrokeMRI study. The study  
565 was funded by the Research Council of Norway [249795, 248238, 276082], the South-Eastern  
566 Norway Regional Health Authority [2014097, 2015044, 2015073, 2018037, 2019107,  
567 2020086], the Norwegian ExtraFoundation for Health and Rehabilitation [2015/ FO5146], the  
568 European Research Council under the European Union's Horizon 2020 research and  
569 Innovation program [ERC StG Grant 802998], Sunnaas Rehabilitation Hospital HT, and the  
570 Department of Psychology, University of Oslo. Funding of the data sources used in the  
571 training set is summarized in Supplementary material Table 2.

572

### 573 **Author contribution**

574 **Anne-Marthe Sanders:** Conceptualization, Software, Formal analysis, Investigation, Data  
575 Curation, Writing - Original Draft, Writing - Review & Editing, Visualization, **Geneviève**  
576 **Richard:** Conceptualization, Investigation, Data Curation, Writing - Review & Editing, **Knut**  
577 **Kolskår:** Conceptualization, Software, Investigation, Data Curation, Writing - Review &  
578 Editing, **Kristine M. Ulrichsen:** Investigation, Data Curation, Writing - Review & Editing,  
579 **Tobias Kaufmann:** Software, Validation, Formal analysis, Writing - Review & Editing, **Dag**  
580 **Alnæs:** Conceptualization, Writing - Review & Editing, **Dani Beck:** Writing - Review &  
581 Editing, **Erlend S. Dørum:** Conceptualization, Investigation, Writing - Review & Editing,  
582 **Ann-Marie G. de Lange:** Writing - Review & Editing, **Jan Egil Nordvik:**  
583 Conceptualization, Writing - Review & Editing, Supervision, Funding acquisition, **Lars T.**  
584 **Westlye:** Conceptualization, Software, Formal analysis, Resources, Writing - Original Draft,  
585 Writing - Review & Editing, Supervision, Project administration, Funding acquisition

586

### 587 **Declarations of interest**

588 The authors have declared no competing interest.

589

590

591

## 592 **References**

- 593 Alcock, L., O'Brien, T. D., & Vanicek, N. (2018). Association between somatosensory, visual and  
594 vestibular contributions to postural control, reactive balance capacity and healthy ageing in  
595 older women. *Health Care for Women International*, *39*(12), 1366-1380.  
596 doi:10.1080/07399332.2018.1499106
- 597 Allen, J. S., Bruss, J., Brown, C. K., & Damasio, H. (2005). Normal neuroanatomical variation due to  
598 age: the major lobes and a parcellation of the temporal region. *Neurobiol Aging*, *26*(9), 1245-  
599 1260; discussion 1279-1282. doi:10.1016/j.neurobiolaging.2005.05.023
- 600 Andersson, J. L. R., Graham, M. S., Zsoldos, E., & Sotiropoulos, S. N. (2016). Incorporating outlier  
601 detection and replacement into a non-parametric framework for movement and distortion  
602 correction of diffusion MR images. *Neuroimage*, *141*, 556-572.  
603 doi:10.1016/j.neuroimage.2016.06.058
- 604 Andersson, J. L. R., & Sotiropoulos, S. N. (2016). An integrated approach to correction for off-  
605 resonance effects and subject movement in diffusion MR imaging. *Neuroimage*, *125*, 1063-  
606 1078. doi:10.1016/j.neuroimage.2015.10.019
- 607 Barha, C. K., Falck, R. S., Davis, J. C., Nagamatsu, L. S., & Liu-Ambrose, T. (2017). Sex differences in  
608 aerobic exercise efficacy to improve cognition: A systematic review and meta-analysis of  
609 studies in older rodents. *Front Neuroendocrinol*, *46*, 86-105. doi:10.1016/j.yfrne.2017.06.001
- 610 Bherer, L., Erickson, K. I., & Liu-Ambrose, T. (2013). A review of the effects of physical activity and  
611 exercise on cognitive and brain functions in older adults. *J Aging Res*, *2013*, 657508.  
612 doi:10.1155/2013/657508
- 613 Bohannon, R. W. (2019). Grip Strength: An Indispensable Biomarker For Older Adults. *Clin Interv*  
614 *Aging*, *14*, 1681-1691. doi:10.2147/cia.S194543
- 615 Bohannon, R. W., Andrews, A. W., & Thomas, M. W. (1996). Walking speed: reference values and  
616 correlates for older adults. *J Orthop Sports Phys Ther*, *24*(2), 86-90.
- 617 Burzynska, A. Z., Chaddock-Heyman, L., Voss, M. W., Wong, C. N., Gothe, N. P., Olson, E. A., . . .  
618 Kramer, A. F. (2014). Physical activity and cardiorespiratory fitness are beneficial for white  
619 matter in low-fit older adults. *PLoS one*, *9*(9), e107413. doi:10.1371/journal.pone.0107413
- 620 Chen, W. T., Chou, K. H., Liu, L. K., Lee, P. L., Lee, W. J., Chen, L. K., . . . Lin, C. P. (2015). Reduced  
621 cerebellar gray matter is a neural signature of physical frailty. *Hum Brain Mapp*, *36*(9), 3666-  
622 3676. doi:10.1002/hbm.22870
- 623 Cole, J. H., & Franke, K. (2017). Predicting Age Using Neuroimaging: Innovative Brain Ageing  
624 Biomarkers. *Trends Neurosci*, *40*(12), 681-690. doi:10.1016/j.tins.2017.10.001
- 625 Cole, J. H., Ritchie, S. J., Bastin, M. E., Valdés Hernández, M. C., Muñoz Maniega, S., Royle, N., . . .  
626 Deary, I. J. (2018). Brain age predicts mortality. *Mol Psychiatry*, *23*(5), 1385-1392.  
627 doi:10.1038/mp.2017.62
- 628 Cooper, R., Kuh, D., & Hardy, R. (2010). Objectively measured physical capability levels and mortality:  
629 systematic review and meta-analysis. *Bmj*, *341*, c4467. doi:10.1136/bmj.c4467
- 630 Dalal, P. K., & Agarwal, M. (2015). Postmenopausal syndrome. *Indian journal of psychiatry*, *57*(Suppl  
631 2), S222-232. doi:10.4103/0019-5545.161483
- 632 Dale, A. M., Fischl, B., & Sereno, M. I. (1999). Cortical surface-based analysis. I. Segmentation and  
633 surface reconstruction. *Neuroimage*, *9*(2), 179-194. doi:10.1006/nimg.1998.0395
- 634 de Lange, A. G., Anatürk, M., Suri, S., Kaufmann, T., Cole, J. H., Griffanti, L., . . . Ebmeier, K. P. (2020a).  
635 Multimodal brain-age prediction and cardiovascular risk: The Whitehall II MRI sub-study.  
636 *Neuroimage*, *222*, 117292. doi:10.1016/j.neuroimage.2020.117292
- 637 de Lange, A. G., Barth, C., Kaufmann, T., Maximov, I., van der Meer, D., Agartz, I., & Westlye, L. T.  
638 (2020b). Women's brain aging: Effects of sex-hormone exposure, pregnancies, and genetic  
639 risk for Alzheimer's disease. *Hum Brain Mapp*, *41*(18), 5141-5150. doi:10.1002/hbm.25180
- 640 de Lange, A. G., & Cole, J. H. (2020). Commentary: Correction procedures in brain-age prediction.  
641 *Neuroimage Clin*, *26*, 102229. doi:10.1016/j.nicl.2020.102229

- 642 de Lange, A. G., Kaufmann, T., van der Meer, D., Maglanoc, L. A., Alnæs, D., Moberget, T., . . .  
643 Westlye, L. T. (2019). Population-based neuroimaging reveals traces of childbirth in the  
644 maternal brain. *Proceedings of the National Academy of Sciences*, *116*(44), 22341.  
645 doi:10.1073/pnas.1910666116
- 646 Demnitz, N., Hogan, D. B., Dawes, H., Johansen-Berg, H., Ebmeier, K. P., Poulin, M. J., & Sexton, C. E.  
647 (2018). Cognition and mobility show a global association in middle- and late-adulthood:  
648 Analyses from the Canadian Longitudinal Study on Aging. *Gait Posture*, *64*, 238-243.  
649 doi:10.1016/j.gaitpost.2018.06.116
- 650 Doherty, A., Jackson, D., Hammerla, N., Plotz, T., Olivier, P., Granat, M. H., . . . Wareham, N. J. (2017).  
651 Large Scale Population Assessment of Physical Activity Using Wrist Worn Accelerometers:  
652 The UK Biobank Study. *PLoS one*, *12*(2), e0169649. doi:10.1371/journal.pone.0169649
- 653 Dyrstad, S. M., Hansen, B. H., Holme, I. M., & Anderssen, S. A. (2014). Comparison of self-reported  
654 versus accelerometer-measured physical activity. *Medicine and science in sports and  
655 exercise*, *46*(1), 99-106. doi:10.1249/MSS.0b013e3182a0595f
- 656 Dørum, E. S., Alnaes, D., Kaufmann, T., Richard, G., Lund, M. J., Tønnesen, S., . . . Westlye, L. T. (2016).  
657 Age-related differences in brain network activation and co-activation during multiple object  
658 tracking. *Brain Behav*, *6*(11), e00533. doi:10.1002/brb3.533
- 659 Dørum, E. S., Kaufmann, T., Alnaes, D., Andreassen, O. A., Richard, G., Kolskar, K. K., . . . Westlye, L. T.  
660 (2017). Increased sensitivity to age-related differences in brain functional connectivity during  
661 continuous multiple object tracking compared to resting-state. *Neuroimage*, *148*, 364-372.  
662 doi:10.1016/j.neuroimage.2017.01.048
- 663 Erickson, K. I., Colcombe, S. J., Elavsky, S., McAuley, E., Korol, D. L., Scalf, P. E., & Kramer, A. F. (2007).  
664 Interactive effects of fitness and hormone treatment on brain health in postmenopausal  
665 women. *Neurobiol Aging*, *28*(2), 179-185. doi:10.1016/j.neurobiolaging.2005.11.016
- 666 Erickson, K. I., Leckie, R. L., & Weinstein, A. M. (2014). Physical activity, fitness, and gray matter  
667 volume. *Neurobiol Aging*, *35 Suppl 2*, S20-28. doi:10.1016/j.neurobiolaging.2014.03.034
- 668 Fischl, B., Salat, D. H., Busa, E., Albert, M., Dieterich, M., Haselgrove, C., . . . Dale, A. M. (2002). Whole  
669 brain segmentation: automated labeling of neuroanatomical structures in the human brain.  
670 *Neuron*, *33*(3), 341-355. doi:10.1016/s0896-6273(02)00569-x
- 671 Fjell, A. M., Walhovd, K. B., Fennema-Notestine, C., McEvoy, L. K., Hagler, D. J., Holland, D., . . . Dale,  
672 A. M. (2009). One-year brain atrophy evident in healthy aging. *J Neurosci*, *29*(48), 15223-  
673 15231. doi:10.1523/jneurosci.3252-09.2009
- 674 Fjell, A. M., Westlye, L. T., Grydeland, H., Amlie, I., Espeseth, T., Reinvang, I., . . . Walhovd, K. B.  
675 (2013). Critical ages in the life course of the adult brain: nonlinear subcortical aging.  
676 *Neurobiol Aging*, *34*(10), 2239-2247. doi:10.1016/j.neurobiolaging.2013.04.006
- 677 Folstein, M. F., Folstein, S. E., & McHugh, P. R. (1975). "Mini-mental state". A practical method for  
678 grading the cognitive state of patients for the clinician. *J Psychiatr Res*, *12*(3), 189-198.  
679 doi:10.1016/0022-3956(75)90026-6
- 680 Franke, K., & Gaser, C. (2019). Ten Years of BrainAGE as a Neuroimaging Biomarker of Brain Aging:  
681 What Insights Have We Gained? *Front Neurol*, *10*, 789. doi:10.3389/fneur.2019.00789
- 682 Franke, K., Ziegler, G., Kloppel, S., & Gaser, C. (2010). Estimating the age of healthy subjects from T1-  
683 weighted MRI scans using kernel methods: exploring the influence of various parameters.  
684 *Neuroimage*, *50*(3), 883-892. doi:10.1016/j.neuroimage.2010.01.005
- 685 Ganna, A., & Ingelsson, E. (2015). 5 year mortality predictors in 498,103 UK Biobank participants: a  
686 prospective population-based study. *Lancet*, *386*(9993), 533-540. doi:10.1016/s0140-  
687 6736(15)60175-1
- 688 Garde, E., Mortensen, E. L., Krabbe, K., Rostrup, E., & Larsson, H. B. (2000). Relation between age-  
689 related decline in intelligence and cerebral white-matter hyperintensities in healthy  
690 octogenarians: a longitudinal study. *Lancet*, *356*(9230), 628-634. doi:10.1016/s0140-  
691 6736(00)02604-0

- 692 Glasser, M. F., Coalson, T. S., Robinson, E. C., Hacker, C. D., Harwell, J., Yacoub, E., . . . Van Essen, D. C.  
693 (2016). A multi-modal parcellation of human cerebral cortex. *Nature*, *536*(7615), 171-178.  
694 doi:10.1038/nature18933
- 695 Granacher, U., Zahner, L., & Gollhofer, A. (2008). Strength, power, and postural control in seniors:  
696 Considerations for functional adaptations and for fall prevention. *European Journal of Sport*  
697 *Science*, *8*(6), 325-340. doi:10.1080/17461390802478066
- 698 Guo, W., Key, T. J., & Reeves, G. K. (2019). Accelerometer compared with questionnaire measures of  
699 physical activity in relation to body size and composition: a large cross-sectional analysis of  
700 UK Biobank. *BMJ Open*, *9*(1), e024206. doi:10.1136/bmjopen-2018-024206
- 701 Hamer, M., Sharma, N., & Batty, G. D. (2018). Association of objectively measured physical activity  
702 with brain structure: UK Biobank study. *J Intern Med*, *284*(4), 439-443.  
703 doi:10.1111/joim.12772
- 704 Jefferis, B. J., Sartini, C., Lee, I.-M., Choi, M., Amuzu, A., Gutierrez, C., . . . Whincup, P. H. (2014).  
705 Adherence to physical activity guidelines in older adults, using objectively measured physical  
706 activity in a population-based study. *BMC Public Health*, *14*(1), 382. doi:10.1186/1471-2458-  
707 14-382
- 708 Kaufmann, T., van der Meer, D., Doan, N. T., Schwarz, E., Lund, M. J., Agartz, I., . . . Westlye, L. T.  
709 (2019). Common brain disorders are associated with heritable patterns of apparent aging of  
710 the brain. *Nat Neurosci*, *22*(10), 1617-1623. doi:10.1038/s41593-019-0471-7
- 711 Kennedy, K. M., & Raz, N. (2009). Aging white matter and cognition: differential effects of regional  
712 variations in diffusion properties on memory, executive functions, and speed.  
713 *Neuropsychologia*, *47*(3), 916-927. doi:10.1016/j.neuropsychologia.2009.01.001
- 714 Keyzers, C., Gazzola, V., & Wagenmakers, E. J. (2020). Using Bayes factor hypothesis testing in  
715 neuroscience to establish evidence of absence. *Nat Neurosci*, *23*(7), 788-799.  
716 doi:10.1038/s41593-020-0660-4
- 717 Kilgour, A. H., Todd, O. M., & Starr, J. M. (2014). A systematic review of the evidence that brain  
718 structure is related to muscle structure and their relationship to brain and muscle function in  
719 humans over the lifecourse. *BMC Geriatr*, *14*, 85. doi:10.1186/1471-2318-14-85
- 720 Klenk, J., Denking, M., Nikolaus, T., Peter, R., Rothenbacher, D., & Koenig, W. (2013). Association of  
721 objectively measured physical activity with established and novel cardiovascular biomarkers  
722 in elderly subjects: every step counts. *Journal of epidemiology and community health*, *67*(2),  
723 194-197. doi:10.1136/jech-2012-201312
- 724 Kuh, D. (2007). A life course approach to healthy aging, frailty, and capability. *J Gerontol A Biol Sci*  
725 *Med Sci*, *62*(7), 717-721. doi:10.1093/gerona/62.7.717
- 726 Lee, T. M. C., Wong, M. L., Lau, B. W., Lee, J. C., Yau, S. Y., & So, K. F. (2014). Aerobic exercise  
727 interacts with neurotrophic factors to predict cognitive functioning in adolescents.  
728 *Psychoneuroendocrinology*, *39*, 214-224. doi:10.1016/j.psyneuen.2013.09.019
- 729 Liu-Ambrose, T., Barha, C. K., & Best, J. R. (2018). Physical activity for brain health in older adults.  
730 *Appl Physiol Nutr Metab*, *43*(11), 1105-1112. doi:10.1139/apnm-2018-0260
- 731 Low, D. C., Walsh, G. S., & Arkesteijn, M. (2017). Effectiveness of Exercise Interventions to Improve  
732 Postural Control in Older Adults: A Systematic Review and Meta-Analyses of Centre of  
733 Pressure Measurements. *Sports Medicine (Auckland, N.z.)*, *47*(1), 101-112.  
734 doi:10.1007/s40279-016-0559-0
- 735 Massa, R. E., Rosso, A., Metti, A. L., Sparto, P. J., Aizenstein, H., Ferrucci, L., . . . Rosano, C. (2019).  
736 Neuroimaging correlates of lateral postural control in older ambulatory adults. *Aging Clin Exp*  
737 *Res*, *31*(5), 611-619. doi:10.1007/s40520-018-1028-4
- 738 Mâsse, L. C., Fuemmeler, B. F., Anderson, C. B., Matthews, C. E., Trost, S. G., Catellier, D. J., & Treuth,  
739 M. (2005). Accelerometer data reduction: a comparison of four reduction algorithms on  
740 select outcome variables. *Medicine and science in sports and exercise*, *37*(11 Suppl), S544-  
741 554. doi:10.1249/01.mss.0000185674.09066.8a
- 742 Mathiowetz, V., Weber, K., Volland, G., & Kashman, N. (1984). Reliability and validity of grip and  
743 pinch strength evaluations. *Journal of Hand Surgery - American Volume*, *9A*, 222-226.



- 744 Mudge, S., Taylor, D., Chang, O., & Wong, R. (2010). Test-retest reliability of the StepWatch Activity  
745 Monitor outputs in healthy adults. *J Phys Act Health*, 7(5), 671-676.
- 746 R Core Team. (2019). R: A language and environment for statistical computing. Vienna, Austria: R  
747 Foundation for Statistical Computing. Retrieved from <https://www.R-project.org/>
- 748 Raz, N., Ghisletta, P., Rodrigue, K. M., Kennedy, K. M., & Lindenberger, U. (2010). Trajectories of brain  
749 aging in middle-aged and older adults: regional and individual differences. *Neuroimage*,  
750 51(2), 501-511. doi:10.1016/j.neuroimage.2010.03.020
- 751 Richard, G., Kolskar, K., Sanders, A. M., Kaufmann, T., Petersen, A., Doan, N. T., . . . Westlye, L. T.  
752 (2018). Assessing distinct patterns of cognitive aging using tissue-specific brain age prediction  
753 based on diffusion tensor imaging and brain morphometry. *PeerJ*, 6, e5908.  
754 doi:10.7717/peerj.5908
- 755 Richard, R. D., & Rouder, J. N. (2018). BayesFactor: Computation of Bayes Factors for Common  
756 Designs. R package version 0.9.12-4.2. <https://CRAN.R-project.org/package=BayesFactor>.
- 757 Ritchie, S. J., Tucker-Drob, E. M., Cox, S. R., Dickie, D. A., Del C Valdés Hernández, M., Corley, J., . . .  
758 Deary, I. J. (2017). Risk and protective factors for structural brain ageing in the eighth decade  
759 of life. *Brain structure & function*, 222(8), 3477-3490. doi:10.1007/s00429-017-1414-2
- 760 Rosen, A. F. G., Roalf, D. R., Ruparel, K., Blake, J., Seelaus, K., Villa, L. P., . . . Satterthwaite, T. D.  
761 (2018). Quantitative assessment of structural image quality. *Neuroimage*, 169, 407-418.  
762 doi:10.1016/j.neuroimage.2017.12.059
- 763 Sexton, C. E., Walhovd, K. B., Storsve, A. B., Tamnes, C. K., Westlye, L. T., Johansen-Berg, H., & Fjell, A.  
764 M. (2014). Accelerated changes in white matter microstructure during aging: a longitudinal  
765 diffusion tensor imaging study. *J Neurosci*, 34(46), 15425-15436. doi:10.1523/jneurosci.0203-  
766 14.2014
- 767 Smith, S. M., Jenkinson, M., Johansen-Berg, H., Rueckert, D., Nichols, T. E., Mackay, C. E., . . . Behrens,  
768 T. E. (2006). Tract-based spatial statistics: voxelwise analysis of multi-subject diffusion data.  
769 *Neuroimage*, 31(4), 1487-1505. doi:10.1016/j.neuroimage.2006.02.024
- 770 Steffener, J., Habeck, C., O'Shea, D., Razlighi, Q., Bherer, L., & Stern, Y. (2016). Differences between  
771 chronological and brain age are related to education and self-reported physical activity.  
772 *Neurobiol Aging*, 40, 138-144. doi:10.1016/j.neurobiolaging.2016.01.014
- 773 Strömmer, J. M., Davis, S. W., Henson, R. N., Tyler, L. K., & Campbell, K. L. (2020). Physical Activity  
774 Predicts Population-Level Age-Related Differences in Frontal White Matter. *J Gerontol A Biol  
775 Sci Med Sci*, 75(2), 236-243. doi:10.1093/gerona/gly220
- 776 Studenski, S., Perera, S., Patel, K., Rosano, C., Faulkner, K., Inzitari, M., . . . Guralnik, J. (2011). Gait  
777 speed and survival in older adults. *Jama*, 305(1), 50-58. doi:10.1001/jama.2010.1923
- 778 Sullivan, E. V., Rose, J., Rohlfing, T., & Pfefferbaum, A. (2009). Postural sway reduction in aging men  
779 and women: relation to brain structure, cognitive status, and stabilizing factors. *Neurobiol  
780 Aging*, 30(5), 793-807. doi:10.1016/j.neurobiolaging.2007.08.021
- 781 Surgent, O. J., Dadalko, O. I., Pickett, K. A., & Travers, B. G. (2019). Balance and the brain: A review of  
782 structural brain correlates of postural balance and balance training in humans. *Gait Posture*,  
783 71, 245-252. doi:10.1016/j.gaitpost.2019.05.011
- 784 Tian, Q., Glynn, N. W., Erickson, K. I., Aizenstein, H. J., Simonsick, E. M., Yaffe, K., . . . Rosano, C.  
785 (2015). Objective measures of physical activity, white matter integrity and cognitive status in  
786 adults over age 80. *Behav Brain Res*, 284, 51-57. doi:10.1016/j.bbr.2015.01.045
- 787 Timmins, I. R., Zaccardi, F., Nelson, C. P., Franks, P., Yates, T., & Dudbridge, F. (2020). Genome-wide  
788 association study of self-reported walking pace suggests beneficial effects of brisk walking on  
789 health and survival. *Commun Biol*, 3(1), 634. doi:10.1038/s42003-020-01357-7
- 790 Tucker, A. M., & Stern, Y. (2011). Cognitive reserve in aging. *Current Alzheimer research*, 8(4), 354-  
791 360.
- 792 Tudor-Locke, C., Hart, T. L., & Washington, T. L. (2009). Expected values for pedometer-determined  
793 physical activity in older populations. *Int J Behav Nutr Phys Act*, 6, 59. doi:10.1186/1479-  
794 5868-6-59

- 795 Varma, V. R., Chuang, Y. F., Harris, G. C., Tan, E. J., & Carlson, M. C. (2015). Low-intensity daily  
796 walking activity is associated with hippocampal volume in older adults. *Hippocampus*, 25(5),  
797 605-615. doi:10.1002/hipo.22397
- 798 Varma, V. R., Tang, X., & Carlson, M. C. (2016). Hippocampal sub-regional shape and physical activity  
799 in older adults. *Hippocampus*, 26(8), 1051-1060. doi:10.1002/hipo.22586
- 800 Vermeulen, J., Neyens, J. C., van Rossum, E., Spreeuwenberg, M. D., & de Witte, L. P. (2011).  
801 Predicting ADL disability in community-dwelling elderly people using physical frailty  
802 indicators: a systematic review. *BMC Geriatr*, 11, 33. doi:10.1186/1471-2318-11-33
- 803 Wang, J., Knol, M. J., Tiulpin, A., Dubost, F., de Bruijne, M., Vernooij, M. W., . . . Roshchupkin, G. V.  
804 (2019). Gray Matter Age Prediction as a Biomarker for Risk of Dementia. *Proc Natl Acad Sci U*  
805 *S A*, 116(42), 21213-21218. doi:10.1073/pnas.1902376116
- 806 Wassenaar, T. M., Yaffe, K., van der Werf, Y. D., & Sexton, C. E. (2019). Associations between  
807 modifiable risk factors and white matter of the aging brain: insights from diffusion tensor  
808 imaging studies. *Neurobiol Aging*, 80, 56-70. doi:10.1016/j.neurobiolaging.2019.04.006
- 809 Westlye, L. T., Walhovd, K. B., Dale, A. M., Bjornerud, A., Due-Tonnessen, P., Engvig, A., . . . Fjell, A.  
810 M. (2010). Life-span changes of the human brain white matter: diffusion tensor imaging (DTI)  
811 and volumetry. *Cereb Cortex*, 20(9), 2055-2068. doi:10.1093/cercor/bhp280
- 812 Wolf, S. L., Catlin, P. A., Gage, K., Gurucharri, K., Robertson, R., & Stephen, K. (1999). Establishing the  
813 reliability and validity of measurements of walking time using the Emory Functional  
814 Ambulation Profile. *Phys Ther*, 79(12), 1122-1133.
- 815 World Health Organization. (2015). *World report on aging and health*. Geneva, Switzerland: World  
816 Health Organization.
- 817 Ylikoski, A., Erkinjuntti, T., Raininko, R., Sarna, S., Sulkava, R., & Tilvis, R. (1995). White matter  
818 hyperintensities on MRI in the neurologically nondiseased elderly. Analysis of cohorts of  
819 consecutive subjects aged 55 to 85 years living at home. *Stroke*, 26(7), 1171-1177.
- 820

## 821 **Web references**

- 822 <http://surfer.nmr.mgh.harvard.edu> (accessed 21 January 2021)
- 823 <https://fsl.fmrib.ox.ac.uk/fsl> (accessed 21 January 2021)
- 824 <https://fsl.fmrib.ox.ac.uk/fsl/fslwiki/eddy> (accessed 21 January 2021)
- 825 <https://fsl.fmrib.ox.ac.uk/fsl/fslwiki/topup> (accessed 21 January 2021)