

Title

Safety and efficacy of long-acting insulins (degludec and glargine) among type 2 diabetic Asian Population: A Systematic Review and Meta-Analysis.

Kant R¹, Yadav P^{2*}, Garg M³, Bahurupi Y⁴, Kumar B⁵

¹Additional Professor, Dept. of Medicine, All India Institute of Medical Sciences, Rishikesh, India

²PhD Scholar, College of Nursing, All India Institute of Medical Sciences, Rishikesh, India

³Assistant Professor, Dept. of Medicine, Govt. Medical College, Khandwa, Madhya Pradesh, India

⁴Assistant Professor, Dept. of Community and Family Medicine, All India Institute of Medical Sciences, Rishikesh, India

⁵Assistant Professor, Dept. of cardiology, All India Institute of Medical Sciences, Rishikesh, India

Corresponding author: Poonam Yadav (<https://orcid.org/0000-0003-0045-6588>*)

PhD Scholar, College of Nursing, All India Institute of Medical Sciences, Rishikesh, Uttarakhand, India

E-mail: dryadavpoonam257@gmail.com

ORCID

First Author <https://orcid.org/0000-0003-1144-4478>

Corresponding author <https://orcid.org/0000-0003-0045-6588>

Abstract

Background

According to IDF Diabetes Atlas 2019, globally, 463 million people live with Diabetes mellitus. Out of that, 88 million people are in South East Asia. By 2045, it is expected to increase by 51% globally and 74% in South East Asia. Global variation in susceptibility to diabetes, insulin sensitivity, and regimen intensity due to race and ethnic differences pose a challenge regarding the optimal choice of second-line therapy for clinicians. Asian populations are at higher risk of developing diabetes mellitus than the European population. The current study was carried out to see the relative efficacy of currently available long-acting insulins in reducing blood sugar, HbA1c and the occurrence of hypoglycemia as a complication associated with them.

Methods

A systematic literature search was done using various search engines (PubMed, Cochrane, Google Scholar, Scopus, and Embase) and included published RCTs in English before December 2019. Further, a manual search was performed by screening the reference list of the identified articles.

Results

We included four RCTs with 534 participants (349 in the insulin degludec group and 185 in the insulin glargine group) with T2DM. Results show that both insulin glargine and degludec are equally efficacious in reducing fasting blood glucose and HbA1c. However, insulin glargine was associated with lower risks of hypoglycemia.

Conclusions

Insulin glargine and degludec are comparable in achieving glycemic control with fewer hypoglycemic episodes in T2DM. This is a preliminary report of research that has not been certified by peer review and should not be used to guide clinical practice.

Keywords: - Asia, Degludec, Diabetes, Glargine, Glycemic control, Hypoglycemia, Long-acting insulin.

INTRODUCTION

Type 2 Diabetes Mellitus is a chronic non-communicable disease characterized by progressive B- cell dysfunction.^[1] It occurs due to hyperglycemia and insulin resistance leading to increased insulin demands of tissue that culminates into over functioning of B-cells and ultimately leading to B-cell failure.^[2] According to IDF Diabetes Atlas 2019, globally, 463 million people live with Diabetes mellitus, and out of that, 88 million people are from South East Asia region (SEAR) only. By 2045, it is expected to increase to 51% globally and 74% in SEAR.^[3] Global variation in susceptibility to diabetes, insulin sensitivity, and regimen intensity due to race and ethnic differences pose a challenge regarding the optimal choice of second-line therapy for clinicians.^[4-6] Asian population is not only at higher risk of developing type 2 diabetes mellitus than European but also develop diabetes at lower BMI.^[7- 9] In South-East Asian Region, amongst people with diabetes, 90% population has type 2 diabetes mellitus, which is preventable^[10]. Glycemic control is the only way to reduce microvascular, & macrovascular complications of DM, which can be attained by effective pharmacotherapeutic agents.^[11] Currently, available options for treatment include oral antidiabetic drugs and insulin. Oral antidiabetic agents are often limited in their efficacy to reduce HbA1c beyond 1-2%.^[12] Insulin is the only drug that can reduce HbA1c to exceptionally lower levels and maintain it near normal. However, it's use is often associated with episodes of hypoglycemia, which limits its use.^[13] Newer long-acting insulins are better stable and efficacious to conventional insulin.^[14] There are conflicting results in earlier studies like a meta-analysis by Su W et al., found Glargine was to be superior to degludec.^[15] Contrary to this, meta-analysis by Zhou W et al., found degludec much better than glargine.^[16] In view of the conflicting data regarding efficacy, it is necessary to compare and prioritize the treatment so far as long-acting insulin use is concerned. It was altogether more important to undertake studies in Asian population as earlier meta-analysis hardly included this population. This study aimed to evaluate the safety and efficacy of currently available long-acting insulin (insulin degludec and glargine) in type 2 diabetes mellitus Asian patients.

Aim: To compare the efficacy and safety of long-acting insulins (degludec and glargine) in type 2 diabetic Asian population.

Objectives:

1. Efficacy assessment: - change in HbA1c and fasting plasma glucose.
2. Safety assessment: - episodes (>1) of documented hypoglycemia (< 70 mg/dl).

Data Sources and Search strategy

The literature search was done as per the PRISMA protocol (preferential reporting items for systematic reviews and meta-analysis)^[17] (figure 1) and PICO format.

Our search strategy includes all relevant published RCTs before December 2019 from PubMed, Cochrane, Google Scholar, and Embase. Articles in English format and having an Asian population were included. Keywords which were used for search (“insulin Degludec” OR “degludec” OR “IDeg”) AND (“insulin glargine” OR “insulin” “glargine” OR “IGlar”) AND (“randomized” OR “randomly”) AND (“diabetes” OR “diabetes mellitus” OR “type 2 diabetes mellitus, OR “type 2 diabetes”) AND (“Asians”). Further, a manual search was performed by screening the reference list of the identified articles.

Inclusion criteria:

- 1) Patient population: all studies enrolling Asian patients
- 2) Intervention: insulin degludec
- 3) Comparison: insulin glargine.
- 4) Outcome: safety was assessed with a risk of hypoglycemia, and efficacy was assessed by improvement or change in the HbA1c or fasting plasma glucose.
- 5) Study design: RCT and parallel and cross-over studies

Exclusion criteria:

- 1) Articles on animal studies and studies conducted outside Asia
- 2) Review articles, observational, quasi-experimental studies, and case series
- 3) Studies in which duration of intervention was less than 12 weeks.

Data extraction:

Two reviewers independently screened the studies for eligibility and data extraction. Any disagreements and discrepancies were resolved by consensus with a third reviewer. The following data from eligible studies were extracted without modification of original data onto pre-existing data collection forms: study location, year of publication, sample size, types of sample selection and allocation to two groups (intervention and comparator or control group), methods, types of administration of intervention and control, and primary outcomes. Authors of selected articles have been contacted for the required data for analysis. The search file was imported to the Zotero library. After removing duplicate items, a freely available Rayyan ([https:// rayyan.qcri.org](https://rayyan.qcri.org)), free web-based software, was used to exclude studies.^[18]

Evaluation of the risk of bias (quality) assessment

The risk of bias has been evaluated through the Cochrane Risk of Bias Assessment Tool. Two reviewers assessed the risk of bias independently, and the third reviewer was consulted in case of any disagreement at any point. The risk of bias assessment has been calculated undertaking

blinding (masking) of participants, researcher and outcomes, allocation concealment, randomization details, data outcome, and data reporting.^[19] Quality assessments have been done with GRADEpro GDT software. Relevant file has been imported from Rev Man software to "Summary of Findings" table GRADE Profiler to create a "Summary of Findings" table.^[20] A summary of the intervention effect and a measure of the quality of evidence was noted in the table.

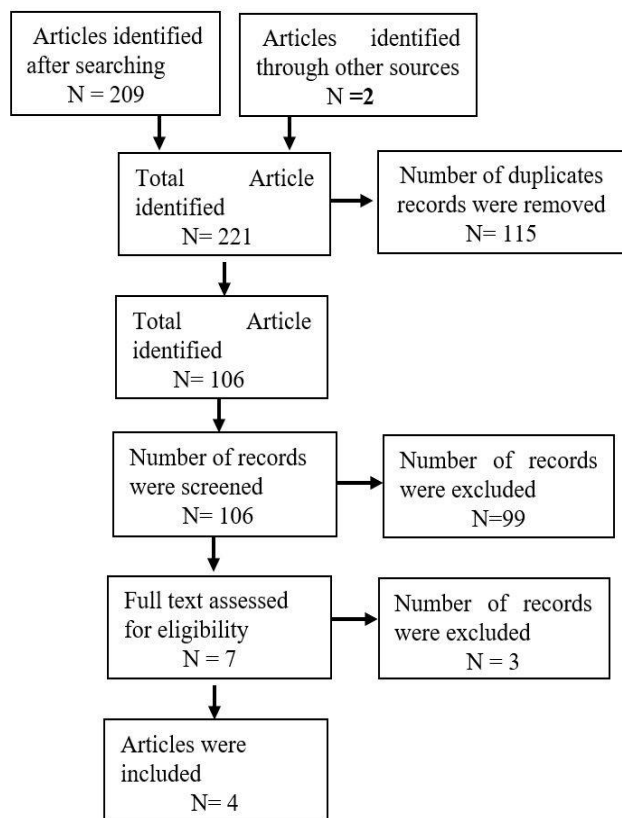
Figure 1 PRISMA flow chart

Data analysis

Four RCTs that met the eligibility criteria were enrolled.^[21-24] Onishi et al. considered the confirmed hypoglycemia as plasma glucose level <3.1 mmol/L or 55.86 mg/dl and found lower hypoglycemia rates in degludec treated patients as opposed to the glargine group.^[23] These findings are reinforced by Aso Y et al., with a similar improvement in glycemic control in both groups but a low risk of hypoglycemia with degludec, considering plasma glucose level as < 70 mg/dl for confirmed hypoglycemia.^[21] In contrast, Kawaguchi Y et al.^[22] and Yamabe M et al.^[24] considered the confirmed hypoglycemia as plasma glucose level <70 mg/dl and observed that insulin glargine and insulin degludec are equivalent long-acting insulin analogs and insulin glargine had lesser episodes of hypoglycemia. They noted the mean percentage of time in the target glucose range (70– 179 mg/dL) and considered hypoglycemia as <70 mg/dL, using flash glucose monitoring every seven days. Authors of two studies Kawaguchi Yet al, 2019^[22], and Yamabe M et al. 2019^[24] have been contacted for the number of events with hypoglycemia episodes and post-intervention data for change in HbA1c (mean and standard deviation) for the inclusion of studies in the meta-analysis, but due to unavailability of data, these two studies could not be included in final assessment.

Relevant articles were tabulated on a Forest plot, and results were displayed based on the graph. The I^2 statistic was used to test statistical heterogeneity, which may arise due to inter-trial variability, with >75% values representing important heterogeneity with a fixed-effects model

Flow chart (PRISMA)



(95% confidence interval, p-value < 0.05). For calculating efficacy, the mean difference between insulin degludec and glargine group was calculated to show differential mean changes in HbA1c and fasting plasma glucose (FPG) levels. For calculating safety between insulin degludec and glargine group, the risk ratio (RR) was calculated. We have not observed significant heterogeneity for the incidence of hypoglycemia and glycemic control. Sensitivity analysis was performed for the outcome of control of fasting plasma glucose, although we observed similar heterogeneity with random-effect model. Subgroup analysis could not be possible due to limited number of studies.

Results: - Analysis was done using the Review Manager 5.4 software. Finally, four RCTs with a total of 534 participants (349 in the insulin degludec group and 185 in the insulin glargine group) with type 2 diabetes mellitus were eligible for inclusion in this Meta-analysis. Characteristics of participants in each trial have been described in **table 1**.

Table1 shows characteristics of participants in each trial

Author and year of the study	Setting	Population	Number of Participants	Duration of Trial	Mean Age of Participants	Duration of Diabetes	Gender Distribution
Aso Y et al., 2017 ^[21]	A Single-Center Study	Japan	45 participants [33 in insulin degludec group and 12 in glargine group]	24 weeks	64.0±13.6 in insulin degludec and 64.7±15.7 in insulin glargine	10 years in degludec and 13 years in insulin glargine	Female participants 55%
Kawaguchi Yet al, 2019 ^[22]	Single Center Study	Japan	30 patients [15 patients in each group]	6 months	69.5 ± 11.3 years	18.3 ± 11.3 years	Male participants (60%)
Onishi Y et al., 2013 ^[23]	A Multi-center Study	Hong Kong, Japan, Malaysia, South Korea, Taiwan, and Thailand)	435 participants [289 in insulin degludec group and 146 in glargine group]	26 weeks	58.6 years	11.6 Years	Male participants (53.56%)
Yamabe M et al., 2019 ^[24]	Single Center Study	Japan	24 participants [12 in each group]	5 months	70.7 ± 7.6 (years)	14.0 ± 9.3 (years)	Male (50%)

The summary of findings with the grade of evidence has been shown in **table 2**. This table has displayed the certainty of evidence and grade as high, moderate, and low for each outcome variable.

Table 2 GRADEpro Summary of findings

Patient or population: Type 2 diabetic patients

Setting: Asian population

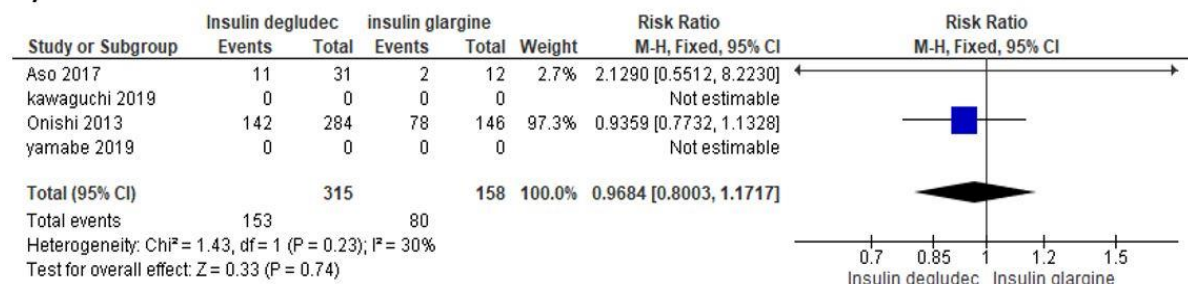
Intervention: Insulin degludec

Comparison: insulin glargine

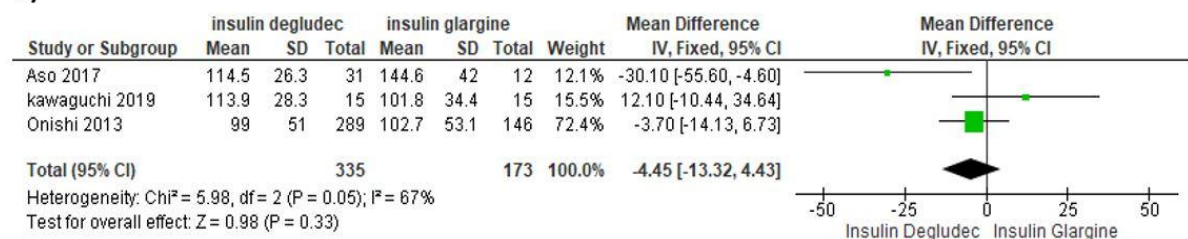
Outcomes	Anticipated absolute effects* (95% CI)		Relative effect (95% CI)	№ participants (studies)	of	The certainty of the evidence (GRADE)
	The risk with insulin glargine	The risk with Insulin degludec				
Fasting blood sugar	The mean fasting blood sugar was 0	MD 4.45 lower (13.32 to 4.43 higher)	-	508 (3 studies)		⊕⊕⊕○ MODERATE ^{a, b}
Decrease in HbA1c	The mean decrease in HbA1c was 0	MD 0.12 higher (0.12 lower to 0.35 higher)	-	480 (2 studies)		⊕⊕⊕○ MODERATE ^b
Risk of hypoglycemia	506 per 1,000	491 per 1,000 (405 to 592)	RR 0.97 (0.80 to 1.17)	473 (2 studies)		⊕⊕○○ LOW ^{a, b, c}

Note:- a. heterogeneity, b. limited studies, c. wide confidence interval

A)



B)



C)

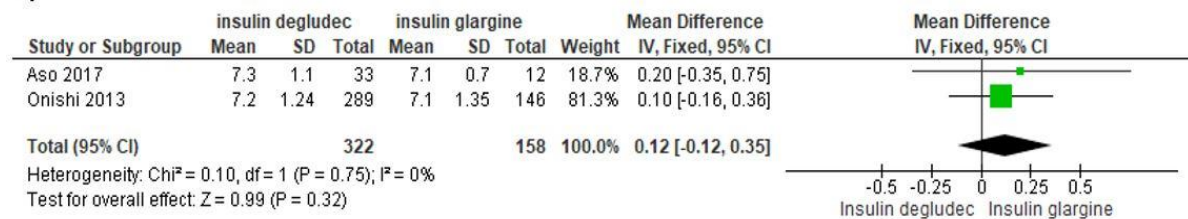


Figure 2 Forest plot shows the comparison of insulin degludec and glargine

A) Incidence of hypoglycemia B) Control of fasting plasma glucose, C) Decrease in HbA1c

Figure 2 (A) forest plot for hypoglycemia risk shows RR = 0.9684, suggesting that hypoglycemia is less with glargine, CI of RR (0.8003- 1.1717) with I²=30%, which shows mild heterogeneity among studies.

Figure 2 (B) forest plot states no statistically significant difference in fasting plasma glucose between insulin degludec and insulin glargine [mean difference is -4.45, confidence interval - 13.32- 4.43] with I²=67%, p-value =0.02, which shows heterogeneity among studies.

Figure 2 (C) forest plot shows no statistically significant difference in HbA1c between insulin degludec and insulin glargine [mean difference is 0.12, confidence interval -0.12-0.35] with I²=0%.

The risk of bias graph and summary has been displayed in **Figure 3**, which included random sequence generation, allocation concealment, detection bias, attrition bias, reporting bias, and others in each study. Funnel plots have not been created due to limited studies in the analysis.

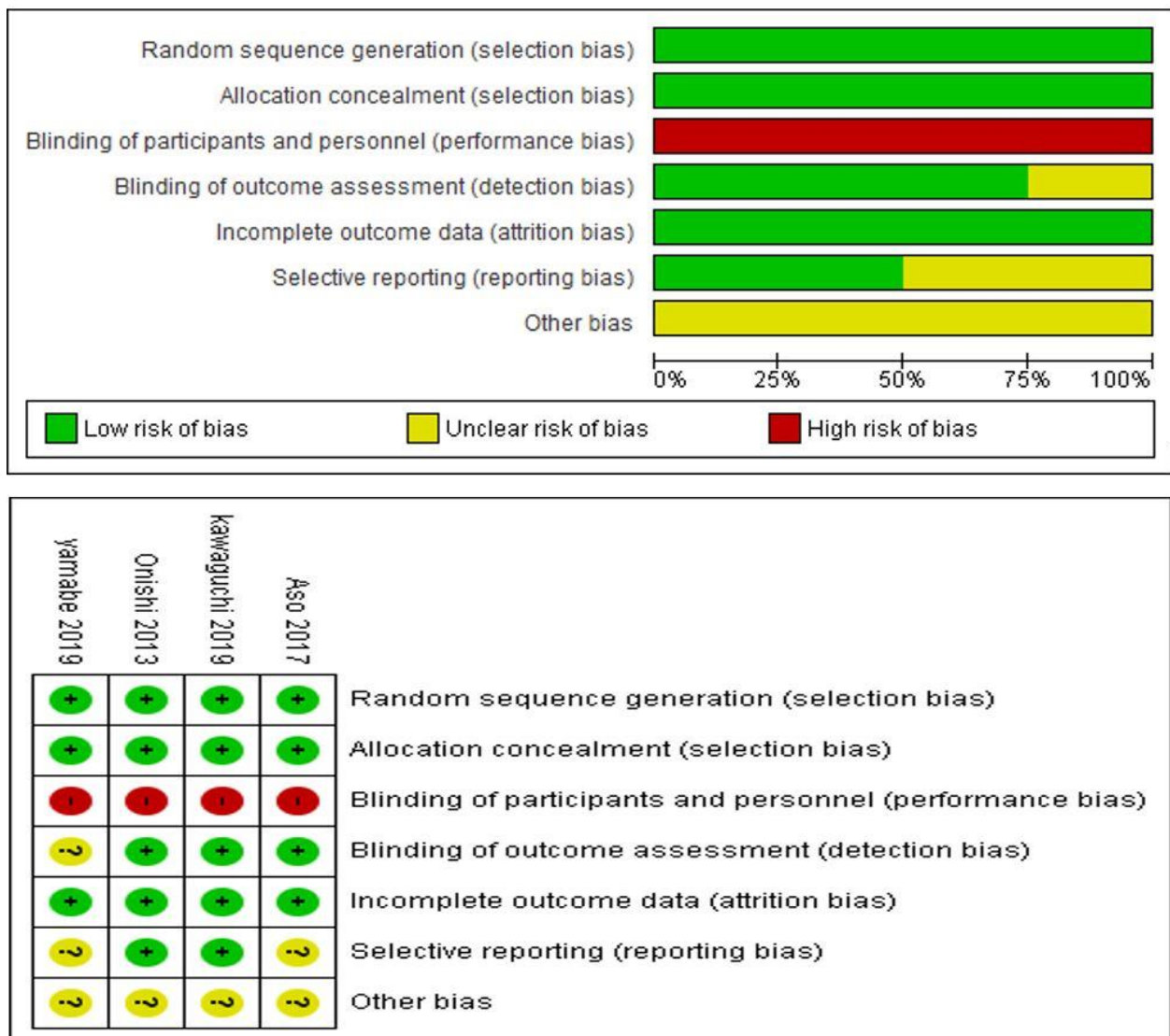


Figure 3 Risk of bias graph and summary

Discussion

Optimum glycemic control in type 2 diabetes patients represents a challenge even with advanced pharmacologic treatment.^[11] Evidence suggested that insulin therapy has been convincingly found to be superior in attaining target glycemic control over oral anti-diabetic drugs.^[12] However, its use is accompanied by hypoglycemia episodes; long-acting insulin therapy is a safe and effective way of treating diabetes mellitus.^[13] In the present systematic review and meta-analysis, we compared the safety and efficacy of currently available long-acting insulin (insulin degludec and glargine) in type 2 diabetes mellitus, Asian patients. Total four high-quality RCTs were included to evaluate outcome measures. In the present study, both insulins were equally effective in reducing fasting plasma glucose and HbA1c. We have noted no statistically significant mean difference in fasting plasma glucose [mean difference is -4.45, confidence interval -13.32- 4.43] and HbA1c reduction [mean difference is 0.12, confidence interval -0.12-0.35] between both groups. For comparing safety between the groups, the risk of hypoglycemia was low in glargine group RR = 0.9684, suggestive that risk of hypoglycemia is less with glargine, CI of RR (0.8003- 1.1717) with $I^2=30\%$. A meta-analysis by Heller S et al. showed a lower rate of hypoglycemia in the degludec group.^[26] Findings of this study are supported by Onishi et al. and Pan C et al. both these investigators considered the confirmed hypoglycemia as plasma glucose level <3.1 mmol/L or 55.86 mg/dl and did find lower rates of hypoglycemia in degludec treated patients as opposed to glargine group.^[23, 25] These findings are reinforced by Aso Y et al. also with a similar improvement in glycemic control in both groups but a low risk of hypoglycemia with degludec, considering higher plasma glucose level (< 70 mg/dl) for confirmed hypoglycemia.^[21] Kawaguchi Y et al.^[22] and Yamabe M et al.^[24] also considered the confirmed hypoglycemia as plasma glucose level <70 mg/dl and observed that insulin glargine and insulin degludec are equivalent long-acting insulin analogs and insulin glargine has lesser episodes of hypoglycemia. Meta-analysis by Ratner RE et al. also concluded that similar improvements in glycemic control could be achieved along with fewer hypoglycemic episodes with insulin glargine.^[27] Findings of Ratner RE et al. and Rodbard HW et al. were conflicting, as later concluded that insulin degludec had fewer hypoglycemic events than insulin glargine^[28], although clinical efficacy was similar. Even Russell-Jones D et al. reported a higher clinical efficacy and safety of insulin degludec than insulin glargine among patients with type 2 diabetes.^[29] Gough SC et al. in a randomized controlled trial among T2DM patients, also concluded that insulin degludec improved glycemic control similar to insulin glargine with a low risk of hypoglycemia.^[30] It is prudent from the studies that most researchers found a lower hypoglycaemic profile in patients treated with insulin degludec. These results

could be partially explained by the cut-off value of plasma glucose to define hypoglycemia as a value of 55.86 mg/dl or less than the plasma sugar of 70mg/dl is expected to exclude a fair number of patients with hypoglycemia. Our findings are contrary to most available literature as in the current meta-analysis, we found that patients with insulin glargine were associated with lower rates of hypoglycemia. However, both insulins had equal propensity to achieve short term and long term glycemic goals. This systematic review and meta-analysis are novel work as there were only a few studies conducted among the Asian population to compare the efficacy and safety of currently available long-acting insulin (insulin degludec and glargine) in type 2 diabetes mellitus patients.

Limitations: - Studies included in this meta-analysis were open-label design, and results represents heterogeneity.

Conclusions: This meta-analysis concluded similar efficacy of currently available long-acting insulin (insulin degludec and glargine) in type 2 diabetes mellitus patients in Asian region, with lower hypoglycemia episodes with insulin glargine.

Acknowledgment

None

Funding

None

Conflict of interest

None

References

- [1].Butler A, Janson J, Bonner-Weir S, Ritzel R, Rizza R, Butler P. -Cell Deficit and Increased -Cell Apoptosis in Humans With Type 2 Diabetes. *Diabetes* [Internet]. 2003 [cited 13 June 2020];52(1):102-110. Available from: <https://pubmed.ncbi.nlm.nih.gov/12502499/>
- [2].Unger RH, Grundy S. Hyperglycaemia as an inducer as well as a consequence of impaired islet cell function and insulin resistance: implications for the management of diabetes. *Diabetologia*. [Internet]. 1985[cited 13 June 2020];28(3):119-121. Available from: <https://pubmed.ncbi.nlm.nih.gov/3888754/>
- [3].IDF ATLAS 2019 International Diabetes Federation. IDF Diabetes Atlas, 9th edn. Brussels, Belgium: [Internet 2019[cited 13 June 2020]. Available at: <https://www.diabetesatlas.org>
- [4].Kodama K, Tojjar D, Yamada S, Toda K, Patel C, Butte A. Ethnic Differences in the Relationship Between Insulin Sensitivity and Insulin Response: A systematic review

- and meta-analysis. *Diabetes Care* [Internet]. 2013 [cited 16 June 2020];36(6):1789-1796. Available from: <https://pubmed.ncbi.nlm.nih.gov/23704681/>
- [5]. Davidson J, Lacaya L, Jiang H, Heilmann C, Scism-Bacon J, Gates J et al. Impact of Race/Ethnicity on the Efficacy and Safety of Commonly Used Insulin Regimens: A Post Hoc Analysis of Clinical Trials in Type 2 Diabetes Mellitus. *Endocrine Practice* [Internet]. 2010 [cited 15 June 2020];16(5):818-828. Available from: <https://pubmed.ncbi.nlm.nih.gov/20439249/>
- [6]. Gomes M, Rathmann W, Charbonnel B, Khunti K, Kosiborod M, Nicolucci A et al. Treatment of type 2 diabetes mellitus worldwide: Baseline patient characteristics in the global DISCOVER study. *Diabetes Research and Clinical Practice* [Internet]. 2019 [cited 15 June 2020];151:20-32. Available from: <https://pubmed.ncbi.nlm.nih.gov/30904743/>
- [7]. Chan J, Malik V, Jia W, Kadowaki T, Yajnik C, Yoon K et al. Diabetes in Asia. *JAMA* [Internet]. 2009 [cited 13 June 2020];301(20):2129. Available from: <https://pubmed.ncbi.nlm.nih.gov/19470990/>
- [8]. Malik V, Willett W, Hu F. Global obesity: trends, risk factors and policy implications. *Nature Reviews Endocrinology* [Internet]. 2012 [cited 13 June 2020];9(1):13-27. Available from: <https://pubmed.ncbi.nlm.nih.gov/23165161>
- [9]. Hills AP, Arena R, Khunti K, et al. Epidemiology and determinants of type 2 diabetes in south Asia. *Lancet Diabetes Endocrinol.* [Internet]. 2018 [cited 13 June 2020];6(12):966-978. <https://pubmed.ncbi.nlm.nih.gov/30287102/>
- [10]. Addressing Asia's fast growing diabetes epidemic [Internet]. 2020 [cited 13 June 2020]. Available from: <https://www.who.int/bulletin/volumes/95/8/17-020817/en/>
- [11]. Chen S, Hsu H, Wang R, Lee Y, Hsieh C. Glycemic Control in Insulin-Treated Patients With Type 2 Diabetes: Empowerment Perceptions and Diabetes Distress as Important Determinants. *Biological Research For Nursing* [Internet]. 2018 [cited 13 June 2020];21(2):182-189. Available from: <https://pubmed.ncbi.nlm.nih.gov/30585081/>
- [12]. Chen H, Wu T, Jap T, Hsiao L, Lee S, Lin H. Beneficial Effects of Insulin on Glycemic Control and β -Cell Function in Newly Diagnosed Type 2 Diabetes With Severe Hyperglycemia After Short-Term Intensive Insulin Therapy. *Diabetes Care* [Internet]. 2008 [cited 13 June 2020];31(10):1927-1932. Available from: <https://pubmed.ncbi.nlm.nih.gov/18556343/>

- [13]. Cryer P, E. I, Karl M. Insulin Therapy and Hypoglycemia in Type 2 Diabetes Mellitus. *Insulin* [Internet]. 2007 [cited 13 June 2020];2(3):127-133. Available from: <https://www.sciencedirect.com/science/article/abs/pii/S1557084307800418>
- [14]. Information H, Overview D, Insulin &, Insulin &, Center T, Health N. Insulin, Medicines, & Other Diabetes Treatments | NIDDK [Internet]. National Institute of Diabetes and Digestive and Kidney Diseases. 2020 [cited 13 June 2020]. Available from: <https://www.niddk.nih.gov/health-information/diabetes/overview/insulin-medicines-treatments>
- [15]. Su W, Li C, Zhang L, Lin Z, Tan J, Xuan J. Meta-Analysis and Cost-Effectiveness Analysis of Insulin Glargine 100 U/mL Versus Insulin Degludec for the Treatment of Type 2 Diabetes in China. *Diabetes Therapy* [Internet]. 2019 [cited 13 June 2020];10(5):1969-1984. Available from: <https://pubmed.ncbi.nlm.nih.gov/31482483/>.
- [16]. Zhou W, Tao J, Zhou X, Chen H. Insulin Degludec, a Novel Ultra-Long-Acting Basal Insulin versus Insulin Glargine for the Management of Type 2 Diabetes: A Systematic Review and Meta-Analysis. *Diabetes Therapy* [Internet]. 2019 [cited 13 June 2020];10(3):835-852. Available from: <https://pubmed.ncbi.nlm.nih.gov/31020539/>
- [17]. Moher D, Liberati A, Tetzlaff J, Altman D. Reprint—Preferred Reporting Items for Systematic Reviews and Meta-Analyses: The PRISMA Statement. *Physical Therapy* [Internet]. 2009 [cited 13 June 2020];89(9):873-880. Available from: <https://pubmed.ncbi.nlm.nih.gov/19621072/>
- [18]. Ouzzani M, Hammady H, Fedorowicz Z, Elmagarmid A. Rayyan — a web and mobile app for systematic reviews. *Sys Rev* 2016; 5:210.
- [19]. RevMan. Review Manager. 53rd ed. Copenhagen: The Nordic Cochrane Centre, The Cochrane Collaboration; 2014.
- [20]. GRADEpro: GRADEpro. Hamilton: McMaster University; 2014.
- [21]. Aso Y, Suzuki K, Chiba Y, Sato M, Fujita N, Takada Y et al. Effect of insulin degludec versus insulin glargine on glycemic control and daily fasting blood glucose variability in insulin-naïve Japanese patients with type 2 diabetes: I'D GOT trial. *Diabetes Research and Clinical Practice* [Internet]. 2017 [cited 13 June 2020];130:237-243. Available from: <https://pubmed.ncbi.nlm.nih.gov/28651211/>
- [22]. Kawaguchi Y, Sawa J, Sakuma N, Kumeda Y. Efficacy and safety of insulin glargine 300 U/mL vs insulin degludec in patients with type 2 diabetes: A randomized, open-

- label, cross-over study using continuous glucose monitoring profiles. *Journal of Diabetes Investigation* [Internet]. 2018 [cited 13 June 2020];10(2):343-351. Available from: <https://pubmed.ncbi.nlm.nih.gov/29947060/>
- [23]. Onishi Y, Iwamoto Y, Yoo S, Clauson P, Tamer S, Park S. Insulin degludec compared with insulin glargine in insulin-naïve patients with type 2 diabetes: A 26-week, randomized, controlled, Pan-Asian, treat-to-target trial. *Journal of Diabetes Investigation* [Internet]. 2013 [cited 13 June 2020];4(6):605-612. Available from: <https://pubmed.ncbi.nlm.nih.gov/24843715/>
- [24]. Yamabe M, Kuroda M, Hirose Y, Kamino H, Ohno H, Yoneda M. Comparison of insulin glargine 300 U/mL and insulin degludec using flash glucose monitoring: A randomized cross-over study. *Journal of Diabetes Investigation* [Internet]. 2018 [cited 13 June 2020];10(2):352-357. Available from: <https://pubmed.ncbi.nlm.nih.gov/29989335/>
- [25]. Pan C, Gross J, Yang W, Lv X, Sun L, Hansen C et al. A Multinational, Randomized, Open-label, Treat-to-Target Trial Comparing Insulin Degludec and Insulin Glargine in Insulin-Naïve Patients with Type 2 Diabetes Mellitus. *Drugs in R&D* [Internet]. 2016 [cited 13 June 2020];16(2):239-249. Available from: <https://pubmed.ncbi.nlm.nih.gov/27098525/>
- [26]. Heller S, Mathieu C, Kapur R, Wolden M, Zinman B. A meta-analysis of rate ratios for nocturnal confirmed hypoglycaemia with insulin degludec vs. insulin glargine using different definitions for hypoglycaemia. *Diabetic Medicine* [Internet]. 2015 [cited 13 June 2020];33(4):478-487. Available from: <https://pubmed.ncbi.nlm.nih.gov/26484727/>
- [27]. Ratner R, Gough S, Mathieu C, Del Prato S, Bode B, Mersebach H et al. Hypoglycaemia risk with insulin degludec compared with insulin glargine in type 2 and type 1 diabetes: a pre-planned meta-analysis of phase 3 trials. *Diabetes, Obesity and Metabolism* [Internet]. 2012 [cited 13 June 2020];15(2):175-184. Available from: <https://pubmed.ncbi.nlm.nih.gov/23130654/>
- [28]. Rodbard H, Gough S, Lane W, Korsholm L, Bretler D, Handelsman Y. Reduced Risk of Hypoglycemia with Insulin Degludec Versus Insulin Glargine in Patients with Type 2 Diabetes Requiring High Doses of Basal Insulin: A Meta-Analysis of 5 Randomized Begin Trials. *Endocrine Practice* [Internet]. 2014 [cited 13 June 2020];20(4):285-292. Available from: <https://pubmed.ncbi.nlm.nih.gov/24246344/>

- [29]. Russell-Jones D, Gall M, Niemeyer M, Diamant M, Del Prato S. Insulin degludec results in lower rates of nocturnal hypoglycaemia and fasting plasma glucose vs. insulin glargine: A meta-analysis of seven clinical trials. *Nutrition, Metabolism and Cardiovascular Diseases* [Internet]. 2015 [cited 13 June 2020];25(10):898-905. Available from: <https://pubmed.ncbi.nlm.nih.gov/26232910/>
- [30]. Gough SC, Bhargava A, Jain R, Mersebach H, Rasmussen S, Bergenstal RM. Low-volume insulin degludec 200 units/ml once daily improves glycemic control similarly to insulin glargine with a low risk of hypoglycemia in insulin-naive patients with type 2 diabetes: a 26-week, randomized, controlled, multinational, treat-to-target trial: the BEGIN LOW VOLUME trial. *Diabetes Care*. [Internet]. 2013[cited 13 June 2020];36(9):2536-2542. Available from: <https://pubmed.ncbi.nlm.nih.gov/23715753/>