

1 Phenome-wide HLA association landscape of 235,000

2 Finnish biobank participants

3 Jarmo Ritari^{1*}, Satu Koskela¹, Kati Hyvärinen¹, FinnGen², Jukka Partanen^{1*}

4 ¹Finnish Red Cross Blood Service, Helsinki, Finland

5 ²Full list of participants and affiliations available as a supplementary file

6 *Correspondence: jarmo.ritari@bloodservice.fi; jukka.partanen@bloodservice.fi

7 Abstract

8 The human leukocyte antigen (HLA) system is the single most important genetic
9 susceptibility factor for many autoimmune diseases and immunological traits.
10 However, in a range of clinical phenotypes the impact of HLA alleles or their
11 combinations on the disease risk are not comprehensively understood.
12 For systematic population-level analysis of HLA-phenotype associations we
13 imputed the alleles of classical HLA genes in a discovery cohort of 146,630 and
14 replication cohort of 89,340 Finns of whom SNP genotype data and 3,355 disease
15 phenotypes were available as part of the FinnGen project.
16 The results suggest HLA associations in phenotypes not reported previously and
17 highlight interactions between HLA genes and alleles in autoimmune diseases.
18 Furthermore, shared HLA alleles in autoimmune and infectious diseases support
19 a genetic link between these diseases.

20 Introduction

21 Regulation of adaptive immune system function is based on recognition of
22 foreign antigens and infectious agents by human leukocyte antigen (HLA)
23 receptors encoded by highly polymorphic loci within the major histocompatibility
24 complex (MHC) on chromosome 6. Out of more than 200 genes harbored by the
25 MHC region approximately half have known immune-related functions (The MHC
26 sequencing consortium, 1999). The HLA molecules play a key role in the
27 initiation of immune response by binding internal (HLA class I molecules *A*, *B*, *C*)
28 and external (HLA class II molecules *DR*, *DQ*, *DP*) peptides and presenting them
29 to T lymphocytes. While class I receptors present antigens directly to cytotoxic
30 CD8+ T cells, the class II molecules are recognized by CD4+ T cells that polarize
31 into different regulatory subtypes (A. Barr et al., 2012). The extremely high
32 genetic polymorphism of HLA genes results in structural variation in the peptide
33 binding pockets between HLA alleles, consequently leading to different peptide-
34 binding preferences and varying antigen repertoires presented to T cells.
35 Originally discovered over 50 years ago as the major determinant of organ and
36 hematopoietic graft rejection (Thorsby, 2009), genetic variation in HLA has since
37 been linked to a wide spectrum of immunological diseases (Trowsdale and
38 Knight, 2013). In major multifactorial autoimmune diseases, HLA alleles and their

39 protein-level motifs present the most important single genetic component in
40 disease susceptibility (Matzaraki et al., 2017), even though in most diseases the
41 triggering peptide complexing with the implicated HLA protein polymorphism
42 remains unknown (Dendrou et al., 2018). On the other hand, varying degrees of
43 protective allelic effects as distinguished from the absence of strong
44 susceptibility alleles have been reported for major autoimmune disorders
45 (Bettencourt et al., 2015; van der Helm-van Mil et al., 2005; van Lummel et al.,
46 2019). The effect towards the reduction of disease risk is presumably mediated
47 through presentation a favourable selection of antigens in terms of specificity
48 and self-regulation (Tsai and Santamaria, 2013). Accordingly, both susceptibility
49 and resistance effects have been attributed to amino acid residues and their
50 positions in the HLA protein sequence (Furukawa et al., 2017; Gregersen et al.,
51 1987; Raychaudhuri et al., 2012). Different alleles sharing a similar structural
52 motif also manifests in local epistasis. Detailed analyses of large cohorts of
53 patients with rheumatoid arthritis or type 1 diabetes have demonstrated that the
54 MHC-mediated risk can be pinpointed to specific amino acid positions, and the
55 effect is being modified non-additively by amino acid polymorphisms in a few
56 other positions in the same or different class II gene (Hu et al., 2015; Lenz et al.,
57 2015; Okada et al., 2016).

58 HLA allelic variance can cause differences in the strength of immune response
59 against infectious agents such as HIV by differential preference of viral peptides
60 (The International HIV Controllers Study, 2010). However, in case of structural
61 similarity between pathogen T cell epitope and a host peptide, immune reaction
62 against the antigen may also increase the likelihood of developing autoimmunity
63 (Oldstone, 1998). Predisposition to infections before the onset of an autoimmune
64 condition has been reported in several cases (Sfriso et al., 2010), and reaction of
65 host T cell clones against the pathogen epitope mimicking host structures has
66 been demonstrated experimentally (Wucherpfennig and Strominger, 1995).
67 Nevertheless, exposure to a rich microbial environment also contributes to
68 achieving protective, tolerogenic setting through toll-like receptor, regulatory T
69 cell and interleukin signaling (Bach, 2018). Immunological regulation and its
70 perturbation are therefore dependent on both environmental and host genetic
71 factors that are mediated by individually varying HLA presentation.

72 Large biobank genome data collections combined with electronic health records
73 have made phenome-wide association studies (PheWAS) feasible (Denny et al.,
74 2013), leading to increased power and novel discoveries in disease genetics

75 (Diogo et al., 2018; Liu et al., 2016; Verma et al., 2018). Population-based
76 approach for the analysis of phenotypic spectrum of HLA associations can give
77 novel insights into the architecture of well-established autoimmune and immune
78 disease associations and broaden the view toward other traits as well (Hirata et
79 al., 2019; Karnes et al., 2017; Liu et al., 2016). The first reported HLA PheWAS
80 analysis with over 11,000 individuals found eight novel phenotypes linked with
81 MHC SNPs as well as five previously unknown associations across multiple
82 phenotypes (Liu et al., 2016). Karnes and coworkers (2017) imputed HLA alleles
83 from cohorts of 28,839 and 8,431 individuals of European origin and tested HLA
84 associations with 1,368 phenotypes. 104 significant associations were observed
85 with 29 phenotypes and 29 HLA alleles. In addition to well-established HLA
86 associations, four novel phenotypes were reported. Hirata and coworkers (2019)
87 analyzed 106 clinical phenotypes for association with MHC variation in a cohort
88 of 166,190 individuals from Japan. They reported significant genotype-phenotype
89 associations in 52 phenotypes, and their fine-mapping showed multiple different
90 patterns of HLA associations, some of which were independent from classical
91 HLA genes.

92 Here we report a systematic, population-based association study of imputed HLA
93 alleles in 3,355 phenotypes in discovery and replication cohorts of 146,630 and
94 89,340 individuals, respectively. These large single-population cohorts enabled
95 us to perform HLA analysis in diseases not studied in detail before and to reveal
96 cross-phenotype dependencies of allelic associations particularly between
97 autoimmune and infectious diseases. Furthermore, as a systematic examination
98 of risk-modifying effects have not, to our knowledge, been implemented at
99 biobank-scale to date, we sought to define protective allelic effects as opposed
100 to nonpredisposition to the top risk alleles. To this end, we studied heterozygous
101 risk allele genotypes, and hypothesized that a risk allele effect could also be
102 modified by a HLA locus of a different class.

103 Results

104 Associations of imputed HLA alleles

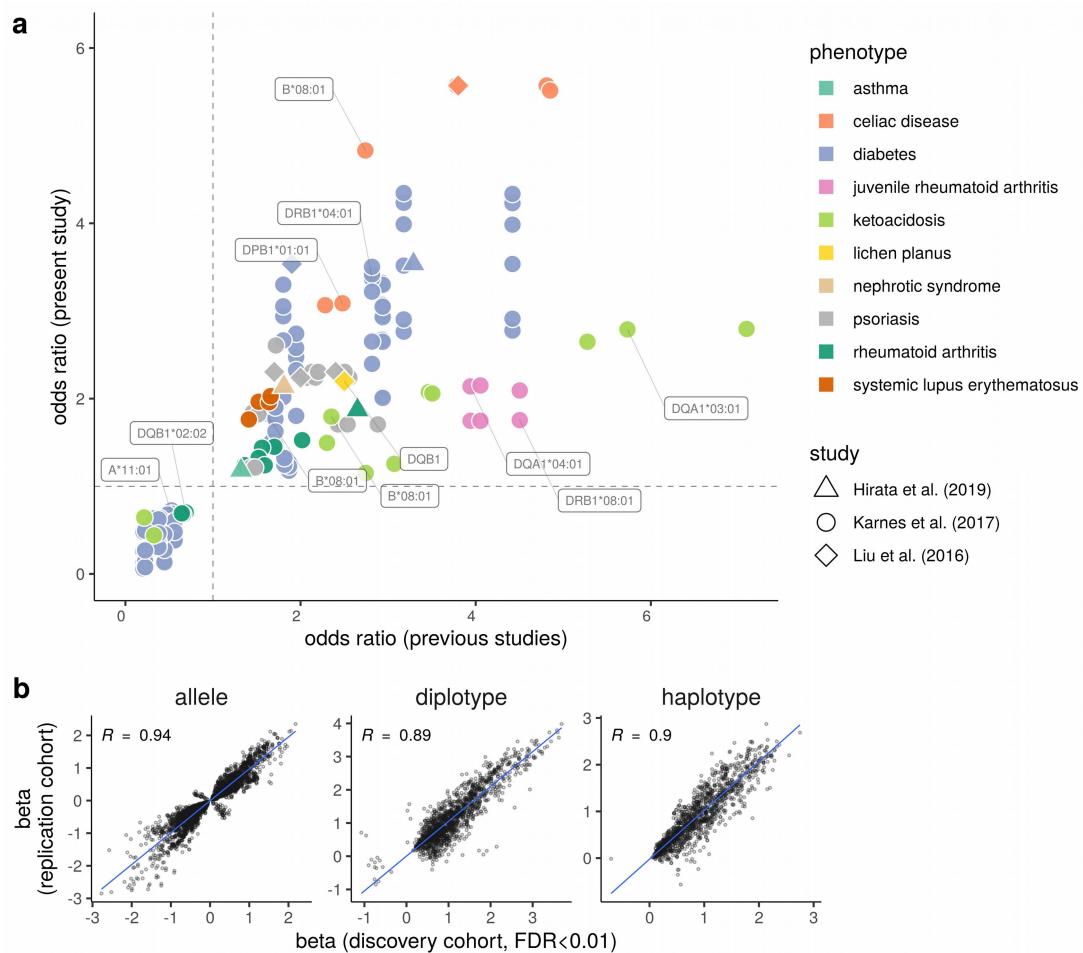
105 Altogether 155 four-digit HLA alleles were imputed with posterior probability >
106 0.5, and of these, 84 alleles had at least one confirmed association in both
107 cohorts. In total, we found 3,649 statistically significant HLA-allele-phenotype

108 associations in 368 phenotypes (Supplementary Table 1). Supplementary Figure
109 1 summarises the distribution of allele associations across the main phenotype
110 categories for each HLA gene. HLA class II genes harboured both the largest
111 number of associations and the strongest associations as indicated by their
112 effect sizes. The top disease categories in terms of number of associations were
113 type 1 diabetes and rheumatic diseases. We did not find a relationship between
114 the number of significant associations and the number of available cases in a
115 phenotype (Supplementary Figure 2).

116 1,620 of the 3,649 replicated HLA associations were in diabetes-related traits
117 (Supplementary Table 1) with *DQB1*03:02* as the top risk allele. Celiac disease
118 (CD) had the second highest number of HLA associations. The lowest p-values
119 were for *DRB1*03:01*, *DQA1*05:01* and *DQB1*02:01* followed by other alleles
120 known to be in a strong linkage disequilibrium with this HLA class II haplotype.

121 To validate our analysis we compared our results with previously published HLA
122 PheWAS studies (Hirata et al., 2019; Karnes et al., 2017; Liu et al., 2016). We
123 observed a consistent relationship between the obtained odds ratios of
124 associated HLA alleles or genes and those of the three other previously published
125 HLA PheWAS studies (Figure 1a). Further, to evaluate the consistency of
126 associations between the discovery and replication cohorts, we correlated the
127 logistic regression log-odds ratios (betas) for the three types of analysis
128 implemented here: HLA allele, diplotype and haplotype. Expectedly, we observed
129 a strong correlation between the two independent cohorts (Pearson's correlation
130 coefficient about 0.9; Figure 1b).

131 We discovered statistically significant (discovery FDR < 0.01, replication p <
132 0.01) HLA allele associations in seven phenotypes for which we found scarce
133 prior evidence of HLA association in the literature (Table 1). For example, we
134 observed an association for *DQA1*01:03* and *DQB1*06:03* in mental and
135 behavioural disorders due to cannabinoids (p-value = 10^{-5} ; beta = 0.6).
136 Moreover, drug-induced hypoglycaemia without coma, vitreous haemorrhage,
137 otitis externa, acute sinusitis, and trigger finger were all associated with
138 *DQB1*03:02* and scleritis and episcleritis was associated with *B*27:05*.



139 **Figure 1.** Comparison of HLA association effects. **a)** Odds ratios of previously
 140 reported HLA PheWAS associations (x-axis) vs. the discovery cohort of the
 141 present study (y-axis). Depending on the study, associations are shown either at
 142 the level of four-digit alleles (Karnes *et al.*) or at gene-level tagged by the
 143 highest ranking variant (Liu *et al.* & Hirata *et al.*). **b)** Correlation of HLA
 144 association FDR < 0.01 log-odds ratios (betas) between the discovery cohort (x-
 145 axis) and the replication cohort (y-axis) of the present study. Panels from left to
 146 right show the data for HLA allele, genotype, and two-locus haplotype association
 147 analyses.

148 **Table 1.** HLA allele associations and modifying effects in previously poorly
149 studied phenotypes. Diplotype and haplotype analyses show effects of
150 combinations of two alleles. Here, a strong protective effect on the risk allele can
151 result in non-significant association.

Type of analysis	Phenotype	Primary HLA	Modifying HLA	Discovery			Replication	
				p-value	Beta	SE	Beta	SE
allele	Drug-induced hypoglycaemia without coma	DQB1*03:02		4.14E-05	0.667	0.155	0.917	0.173
		DQA1*03:01		4.83E-05	0.663	0.155	0.926	0.173
	Mental and behavioural disorders due to cannabinoids	DQA1*01:03		7.26E-06	0.603	0.128	0.439	0.127
		DQB1*06:03		1.22E-05	0.59	0.128	0.413	0.129
		DRB1*13:01		3.23E-05	0.54	0.125	0.378	0.125
	Vitreous haemorrhage	DQB1*03:02		1.36E-24	0.701	0.064	0.726	0.079
		DQA1*03:01		1.33E-23	0.688	0.065	0.707	0.079
		DRB1*04:01		4.61E-13	0.552	0.073	0.765	0.085
Otitis externa	DQB1*03:02		1.39E-05	0.221	0.051	0.212	0.058	
	B*18:01		2.46E-05	0.291	0.068	0.341	0.08	
	DQA1*03:01		4.32E-05	0.209	0.051	0.208	0.059	
Acute sinusitis	DQA1*03:01		1.97E-07	0.147	0.028	0.145	0.033	
	DQB1*03:02		2.66E-07	0.145	0.028	0.142	0.032	
	DRB1*04:01		7.41E-06	0.142	0.032	0.134	0.036	
Trigger finger	DQB1*03:02		7.39E-08	0.333	0.061	0.261	0.074	
	DQA1*03:01		7.67E-08	0.333	0.061	0.257	0.074	
	DRB1*04:01		1.88E-06	0.328	0.068	0.357	0.079	
Scleritis and episcleritis	B*27:05		8.48E-08	0.579	0.102	0.574	0.122	
diplotype	Lichen planus	DQB1*05:01	DQB1*05:01 ^a	2.46E-14	1.323	0.166	1.400	0.216
			DQB1*03:01	2.26E-02	0.385	0.165	0.621	0.201
	Seropositive rheumatoid arthritis	DRB1*04:08	DRB1*04:01 ^a	5.84E-35	1.739	0.146	2.490	0.204
			DRB1*08:01	2.50E-01	0.205	0.223	0.226	0.384
Co-morbidities, CVD and metabolic diseases	DRB1*04:01	DRB1*03:01 ^a	1.27E-76	0.953	0.052	0.877	0.068	
		DRB1*15:01	6.61E-01	0.020	0.045	-0.067	0.061	
		DRB1*11:01	9.20E-01	0.009	0.089	0.204	0.124	
		DRB1*14:54	3.38E-01	-0.167	0.177	-0.026	0.24	
Thyroiditis, ILD-related definition	DQB1*02:01	DQB1*03:02 ^a	4.71E-15	1.203	0.134	0.989	0.172	
		DQB1*05:01	8.74E-03	0.387	0.144	-0.112	0.207	
haplotype	Type1 diabetes, definitions combined	DQB1*03:02	B*44:27 ^a	7.24E-14	2.223	0.255	2.190	0.309
			B*40:01	6.04E-08	0.885	0.15	1.129	0.165
			B*27:05	3.50E-06	0.823	0.164	0.713	0.214
	Diabetes, kidney failure	DQB1*03:02	B*56:01 ^a	8.34E-19	1.333	0.129	1.240	0.177
			B*27:05	3.86E-03	0.518	0.173	-0.355	0.366
			B*18:01	1.58E-02	0.371	0.149	0.486	0.19
	Diabetic maculopathy	DQB1*03:02	B*56:01 ^a	1.34E-17	1.353	0.136	1.502	0.176
			B*18:01	4.83E-04	0.548	0.15	0.656	0.191
			B*27:05	3.70E-01	0.217	0.215	-0.171	0.366
	ILD Co-morbidities, CVD and metabolic diseases	DRB1*04:01	B*44:27 ^a	1.51E-06	0.695	0.147	0.586	0.18
			B*44:02	8.63E-03	0.100	0.038	0.042	0.052
	Other (seronegative) rheumatoid arthritis, wide	B*27:05	DRB1*04:08 ^a	2.04E-19	1.046	0.102	0.978	0.132
DRB1*04:04			8.75E-01	0.047	0.191	0.090	0.249	

^a Protective effect was determined relative to this allele combination in diplotype and haplotype analyses.

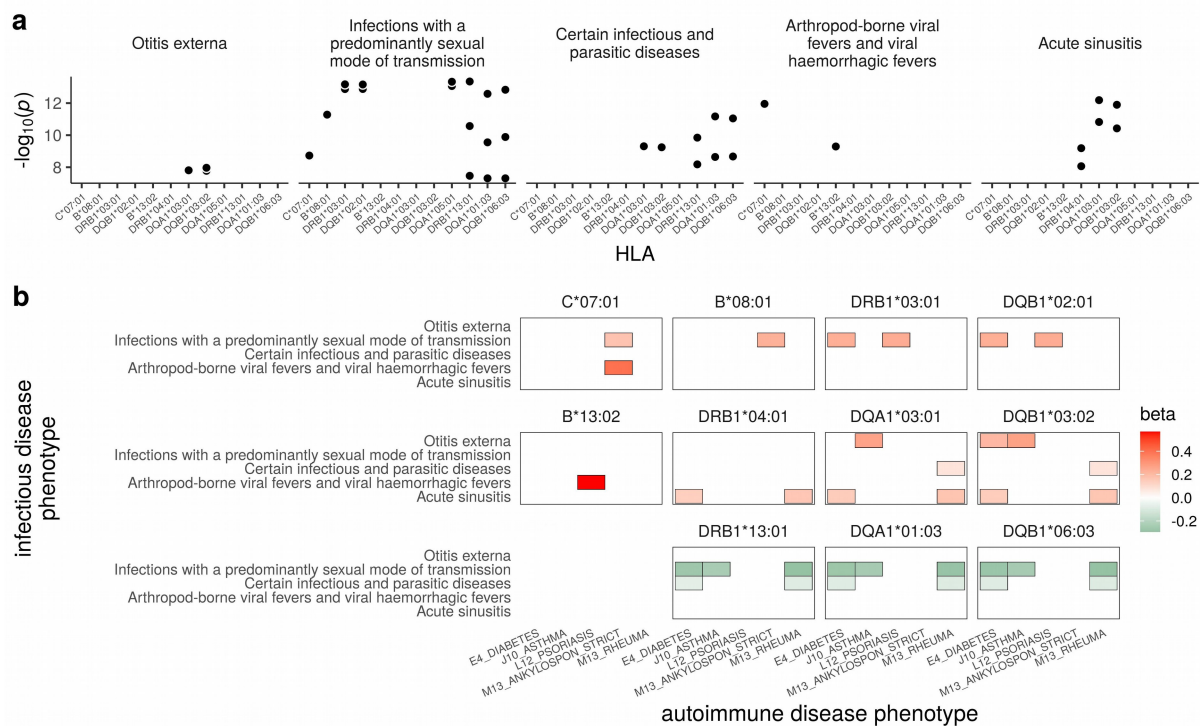
152 Cross-phenotype HLA allele associations

153 To evaluate possible independence of an HLA association between two
154 phenotypes, we conducted analyses by including a phenotype as an additional
155 covariate in the regression models. We observed that altogether 68 HLA alleles
156 showed evidence of independent association with two or more phenotype
157 categories (Supplementary Table 2). To study shared HLA associations in
158 autoimmune and infectious diseases, we narrowed down the results for these
159 phenotypes to include only alleles that in conditional analyses showed evidence
160 of associating with infectious diseases independently of at least one autoimmune
161 disease. The results are summarized by Figure 2, showing the alleles, p-values,
162 phenotypes and effect sizes of the associations. We found 12 alleles in five
163 infectious and five autoimmune diseases that fulfilled the above criteria of
164 association. Nine HLA alleles, eight of which appeared to be parts of *C*07:01 -*
165 *B*08:01 - DRB1*03:01 - DQA1*05:01 - DQB1*02:01* and *DRB1*04:01 -*
166 *DQA1*03:01 - DQB1*03:02* haplotypes, as well as *B*13:02*, predisposed to both
167 autoimmune diseases and infections. Three alleles, all part of the *DRB1*13:01 -*
168 *DQA1*01:03 - DQB1*06:03* haplotype, showed a lower frequency in cases.
169 Altogether ten alleles associated with two or more infectious-autoimmune
170 disease pairs.

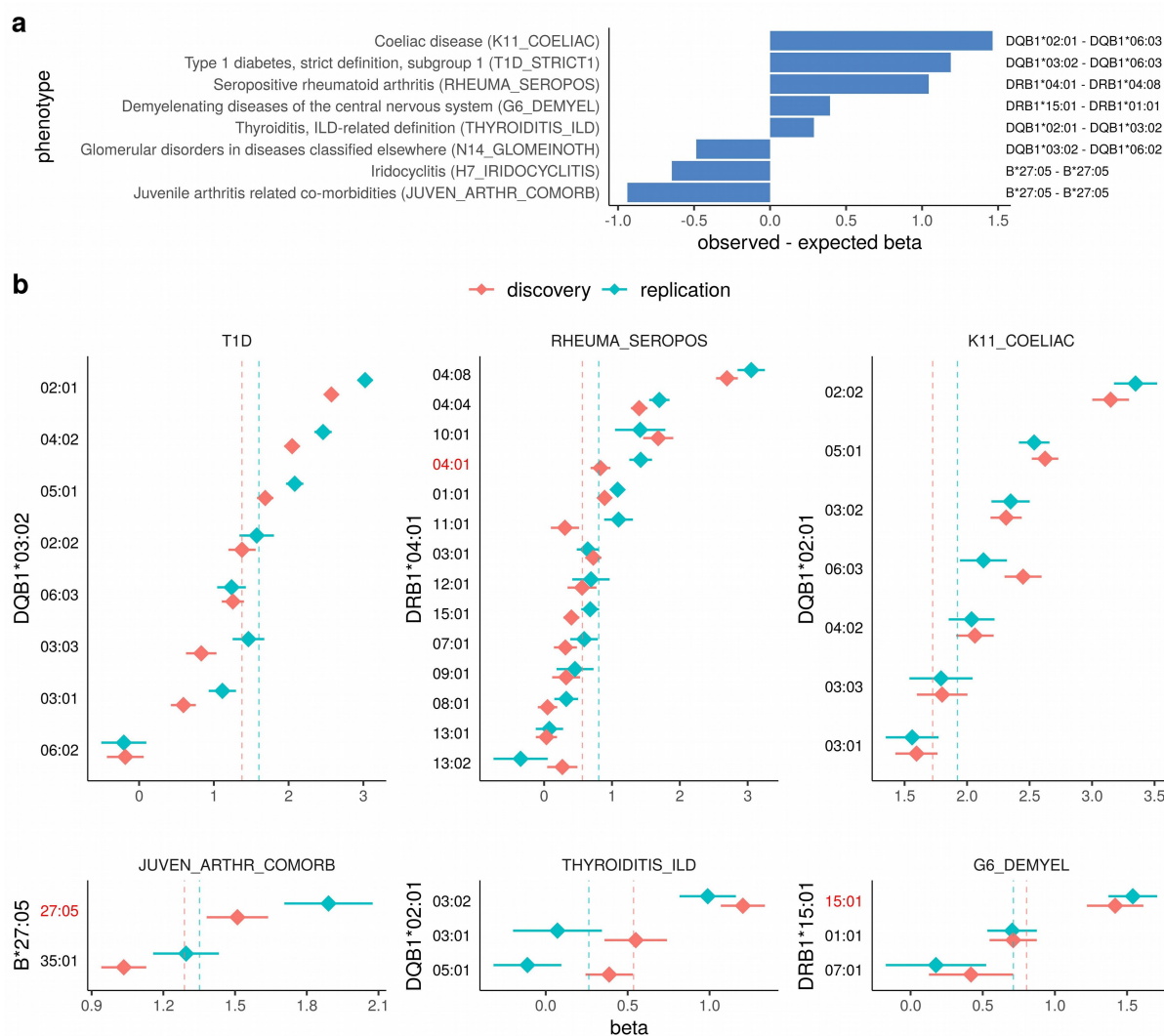
171 HLA diplotype associations

172 To analyze the effect of HLA risk allele diplotypes on the level of disease
173 susceptibility, we conducted conditional regression analyses with diploid allele
174 combinations. We found 225 statistically significant (discovery FDR < 0.01,
175 replication p < 0.01) phenotypes representing 21 different phenotype categories
176 associated with at least one risk allele diplotype (Supplementary Table 3). In 91
177 phenotypes representing 13 different phenotype categories the other HLA allele
178 in the same locus exerted a statistically significant (discovery FDR < 0.01,
179 replication p < 0.01) modifying effect on the risk allele (Supplementary Table 4).
180 Figure 3 shows significant modifying allelic effects in phenotypes that deviated
181 the most from expectation (i.e. the sum of individual allele effects, Figure 3a).
182 For example, in type 1 diabetes, the results replicated the well-established
183 protective allele *DQB1*06:02* and showed that *DQB1*04:02* increased the
184 *DQB1*03:02* mediated risk for insulin medication despite having negative effect

185 direction (-0.16) in the allele-level association analysis (Figure 3b). In coeliac
186 disease, alleles such as *DQB1*06:03* or *DQB1*04:02*, that showed negative beta
187 values in the single allele association test, contributed towards increasing the
188 *DQB1*02:01* mediated risk (Figure 3b). Potentially novel heterozygotic effects on
189 the risk allele are listed by Table 1.



190 **Figure 2.** HLA alleles associated with an infectious disease independently of
191 autoimmune disease. **a)** P-values of significant ($< 5 \times 10^{-8}$) alleles. Each panel
192 show an infectious disease phenotype. Within panels, one allele can associate
193 with more than one autoimmune disease. **b)** HLA alleles associated with
194 infectious diseases (y-axis) independently from autoimmune diseases (x-axis).
195 The color-filled squares indicate the effect size and direction. The results are
196 grouped by known haplotypes in each row. *DQA1*05:01* is omitted from the first
197 row as its profile is identical to the other two shown class II alleles. The data are
198 based on conditional regression analyses with $p < 5 \times 10^{-8}$ threshold in the full
199 dataset (discovery+replication), where selected phenotypes were analysed by
200 adding a different phenotype as an additional covariate in the model one at a
201 time.



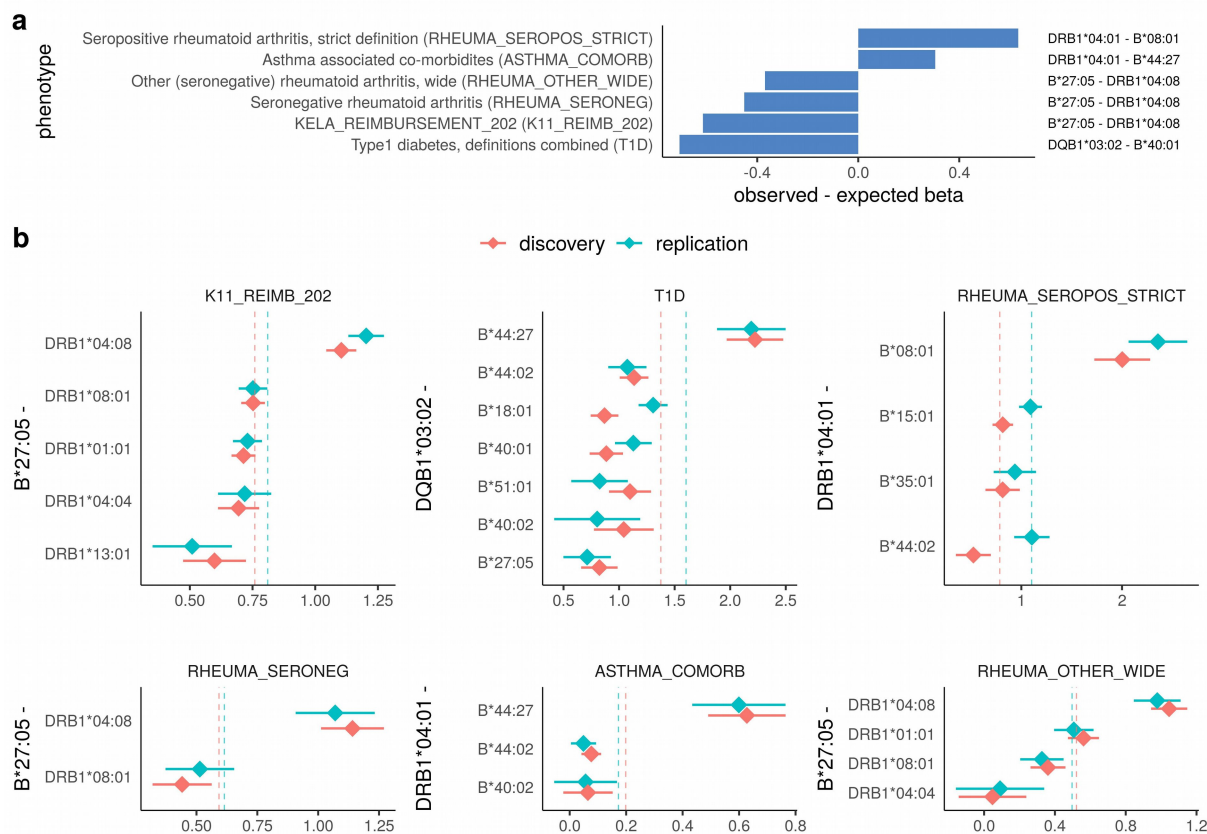
202 **Figure 3.** HLA diplotype effects. Risk allele in combination with the second allele
 203 of the same HLA gene. **a)** Phenotypes in which the risk allele diplotype
 204 association effects deviate from expected (i.e. sum of individual allelic effects).
 205 **b)** The x-axis shows log-odds ratios (betas) for different diplotypes depicted on
 206 the y-axis. The y-axis label indicates the primary risk allele, and the tick mark
 207 labels indicate the other alleles in the same locus. The vertical dashed lines
 208 indicate the risk allele's effect estimates based on allele-level analysis. Only
 209 significant (discovery FDR < 0.01, replication p < 0.01) effects on the risk allele
 210 are shown. The error bars indicate standard errors for the beta values.

211 HLA haplotype associations

212 To test whether the effect of a primary risk allele was affected by alleles of a HLA
213 gene of a different class, we conducted conditional regression analyses with
214 allele combinations from two HLA genes (termed here as haplotype
215 associations). The analysis was performed using phased data but we cannot
216 prove that they genuinely formed haplotypes. We found a total of 16 statistically
217 significant haplotype associations with 224 phenotypes representing 23 different
218 phenotype categories (Supplementary Table 5). There was a statistically
219 significant (discovery FDR < 0.01, replication $p < 0.01$) modifying effect on the
220 risk allele in 56 phenotypes representing 10 phenotype categories
221 (Supplementary Table 6). Figure 4a shows significant modifying allelic effects in
222 phenotypes that deviated the most from expectation (i.e. the sum of individual
223 allele effects). For example, in T1D, even though *B*44:27* by itself was not
224 associated, together with *DQB1*03:02* the risk is increased (Figure 4b).
225 Potentially novel haplotype modifier effects on the risk allele are listed by Table
226 1.

227 Discussion

228 The current study presents results of a systematic association analysis of
229 imputed HLA alleles with over 3,000 clinical phenotypes in more than 235,000
230 individuals. In total, we report 3,649 statistically significant and successfully
231 replicated allele-phenotype associations in 368 phenotypes distributed over 35
232 disease categories. Consistently with previous HLA PheWAS and other reports
233 (Dendrou et al., 2018), our study uncovered well-established associations with
234 major autoimmune disorders, and also found evidence of HLA pleiotropy (Karnes
235 et al., 2017; Liu et al., 2016) in particular between infectious and autoimmune
236 diseases. Expectedly, the effect size estimates between the previous studies and
237 our discovery and replication data sets showed overall high concordance,
238 validating the accuracy of HLA imputation, phenotype data and association
239 analyses based on these. The results from conditional analyses focusing on
240 selected combinations of HLA alleles and cross-phenotype associations further
241 add to the existing knowledge by including risk-modifying effects not studied
242 before in a phenome-wide context.



243 **Figure 4.** HLA haplotype effects. Risk allele in combination with another allele
 244 of a different HLA gene. **a)** Phenotypes in which the risk allele haplotype
 245 association effects deviate from expected (i.e. sum of individual allelic effects).
 246 **b)** The x-axis shows log-odds ratios (betas) for different two-locus allele
 247 combinations depicted on the y-axis. The y-axis label indicates the primary risk
 248 allele and the tick marks indicate alleles of a different HLA gene. The vertical
 249 dashed lines indicate the risk allele's effect estimates based on allele-level
 250 analysis. Only significant (discovery FDR < 0.01, replication p < 0.01) effects on
 251 the risk allele are shown. The error bars indicate standard errors for the beta
 252 values.

253 In a recent well-powered association study, MHC region was linked with multiple
254 common infectious diseases, and fine-mapping revealed several independent
255 signals among HLA-gene variants and alleles (Tian et al., 2017). Moreover, in
256 another study on MHC expression quantitative trait loci, protection from bacterial
257 infections in cystic fibrosis by the common autoimmune risk haplotype AH 8.1
258 was found to be mediated by a non-HLA gene carried in the same haplotype
259 (D'Antonio et al., 2019). Our finding that certain HLA alleles in common
260 haplotypes were shared by infectious and autoimmune diseases is intriguing in
261 regard to the proposed triggering role of infections in autoimmunity (Ercolini and
262 Miller, 2009). The result on the *B*13:02 - DQB1*03:02* and *C*07:01 -*
263 *DQB1*02:01* haplotypes showed that class I and II alleles exhibited different
264 associated phenotypes, suggesting that these alleles may have effects that are
265 not explained by linkage disequilibrium alone. As evidence of HLA pleiotropy was
266 also reported by two previous MHC PheWASs (Karnes et al., 2017; Liu et al.,
267 2016), it will be of great interest to try to reveal the mechanistic background for
268 these shared associations, especially between infections and autoimmunity
269 (D'Antonio et al., 2019; Matzaraki et al., 2017).

270 The strong enrichment of HLA risk alleles in autoimmune diseases, e.g. DQ8 in
271 T1D, DQ2 in coeliac disease, or B27 in arthropathies, automatically leads to
272 lower frequencies of other alleles in the risk locus and consequently to risk-
273 reducing effect estimates irrespective of actual association. Conditional analyses
274 adjusted for allelic variation can reveal genuine effects of the risk-gene HLA
275 genotypes. In line with previous analyses, our HLA diplotype PheWAS replicated
276 known protective allelic effects in e.g. in demyelinating diseases (*DRB1*07:01*
277 and *01:01*) (Wu et al., 2010), arthropathic psoriasis (*C*07:01*) (Queiro et al.,
278 2006), diabetes (*DQB1*06:02*) (Pugliese et al., 1995), and seropositive RA
279 (*DRB1:13:01* and *08:01*) (van der Helm-van Mil et al., 2005) and provided
280 estimates for risk-modifying effects of a range of alleles occurring together with
281 the top risk allele in autoimmune disorders. Our results showed a risk-modifying
282 effect of *DQB1*03:01* for *DQB1*05:01* in lichen planus (LP), helping resolve the
283 somewhat contradictory results obtained by previous serotyping studies on
284 frequencies of DQ1 and DQ3 in LP patients (Nasa et al., 1995; Porter et al.,
285 1993).

286 Population founder effect can lead to reduced genetic diversity and altered
287 frequencies of genetic variants (Chheda et al., 2017), including HLA alleles and

288 haplotypes (Creary et al., 2019; Hurley et al., 2020). The current study was
289 based on genetically defined cohort of Finns that constitute a Northern European
290 genetic isolate. A characteristic genetic architecture is visible in the repertoire of
291 HLA haplotypes where a number of Finnish enriched rare (FER) haplotypes are
292 substantially more common than elsewhere in Europe (Linjama et al., 2018). Our
293 HLA class I – class II analysis demonstrates how haplotype effects can be
294 estimated in a genetically characteristic population. We found that *B*27:05*
295 occurring together with *DRB1*04:08* carried the highest risk for seronegative
296 rheumatic diseases, confirming an association that has been previously
297 described in the Finnish population (Tuokko et al., 1997). This allele combination
298 occurs in *C*01:02 - HLA-B*27:05 - DRB1*04:08 - DQB1*03:01* haplotype that
299 belongs to the FER group and is 3300 times more frequent in the Finnish
300 population than in other European populations. Our study further demonstrated
301 that the predisposing effect of *B*27:05* was effectively removed by *DRB1*04:04*.
302 This allele pair is known to occur in the *C*01:02/02:02 - B*27:05 - DRB1*04:04 -*
303 *DQB1*03:02* FER haplotype.

304 While HLA class I and II have been reported to be independently associated with
305 T1D (Eike et al., 2009; Mikk et al., 2017), the compound effect of allelic
306 heterogeneity between HLA class I and II remains less comprehensively
307 understood. We observed protective effects for HLA class I alleles that by
308 themselves did not have association with T1D and its comorbidities in our
309 analyses or elsewhere in the literature (Noble and Valdes, 2011). For example,
310 *B*27:05* and *B*40:01* occurring together with *DQB1*03:02* reduced the risk
311 conferred by *DQB1*03:02* while *B*44:27* substantially increased it. The
312 predisposing effect of the uncommon *B*44:27* allele in diabetes-related
313 conditions can go unnoticed in mixed populations due its infrequency or
314 appearance in different class II haplotypes. Allele *B*44:27* is relatively rare also
315 in Finland and occurs mostly with *C*07:04 - B*44:27 - DRB1*16:01 -*
316 *DQB1*05:02, DRB1*08:01 - DQB1*04:02* and *DRB1*01:01 - DQB1*05:01*. As
317 these haplotypes lack known risk alleles, the causative variant remains unknown
318 but suggests a potential role for *B*44:27*. Obviously, rare alleles such as *B*44:27*
319 and haplotypes carrying it are not widely studied, and also the risk factor
320 associated with *B*44:27* may not be the same as in *DQB1*03:02* haplotypes.

321 Our study is also limited in some respects. First, analysis of HLA alleles alone
322 cannot definitively attribute the observed associations directly to HLA owing to
323 strong linkage disequilibrium within the MHC (Trowsdale and Knight, 2013). For

324 example, the known associations between disorders of iron metabolism and
325 *A*03:01*, and that between disorders of adrenal gland and *DRB1*04:04*, at least
326 partially are a result from linkage disequilibrium with *HFE* gene and *CYP21* gene,
327 respectively. Also, most of the rare HLA alleles were not covered by the used
328 imputation panel and consequently the analysis did not cover their possible
329 associations. Second, our study is restricted by statistical power particularly in
330 conditional analyses with many covariates and in endpoints having a low number
331 of cases. While the independent replication design of the study helps eliminate
332 non-systematical false positives arising from e.g. relatedness, batch and other
333 chance factors, it cannot categorically rule them out or remove sampling
334 uncertainty in low-powered endpoints. Third, the FinnGen phenotypes, albeit
335 carefully curated, were derived from health register which cannot be assumed to
336 be totally accurate. Finally, haplotype analysis cannot prove that the alleles are
337 encoded in *cis*, but the effects between two HLA genes, or chromosomal regions
338 between them, can also take place in *trans*.

339 In conclusion, the results of the present study illustrate the role of HLA alleles
340 both separately and in combination in immune-mediated diseases, revealing
341 potentially new HLA-linked disease phenotypes and providing a data resource for
342 future HLA analyses in independent populations. The results expand the view of
343 the complex genetic structure of HLA, motivating the consideration of allele and
344 gene interactions in risk calculations. These results can serve as starting points
345 for functional studies focusing on mechanistic molecular underpinnings of the
346 discovered associations.

347 **Materials and Methods**

348 **Subjects and clinical endpoints**

349 The discovery cohort of the study included all biobank participants in the
350 FinnGen (www.finnngen.fi) data release R3 ($n_{\text{total}} = 146,630$) while the independent
351 replication cohort comprised the data release R5 (without R3; $n_{\text{total}} = 89,340$).
352 Numbers of cases and controls for each phenotype are given in the
353 Supplementary Table 1. Endpoints with at least 5 cases carrying a given allele in
354 both discovery and replication cohorts were included in the analysis. The clinical
355 disease endpoint definitions were curated from ICD 9-10, ICD-O-3, the Social
356 Insurance Institute (KELA) drug reimbursement codes and ATC-codes as a part of

357 the FinnGen project (finngen.gitbook.io/documentation/methods/endpoints). For
358 clarity, the FinnGen phenotypes include many partially overlapping diseases or
359 traits, particularly in diabetes and its comorbidities. Thus, the included
360 phenotypes are not necessarily independent. All patients and control subjects
361 provided an informed consent for biobank research in accordance with the
362 Finnish Biobank Act, with the exception of FinnGen legacy samples which were
363 approved by the National Supervisory Authority for Welfare and Health (Valvira).
364 The FinnGen study protocol was approved by the Ethical Review Board of the
365 Hospital District of Helsinki and Uusimaa (Nr HUS/990/2017). All samples and
366 individual-level data were pseudonymized and processed in accordance with the
367 EU GDPR law.

368 Genotyping

369 Genotyping of FinnGen samples was performed on a customized ThermoFisher
370 Axiom array at the Thermo Fisher genotyping service facility (San Diego, USA).
371 Genotype calling and quality control steps are described in
372 finngen.gitbook.io/documentation/methods/genotype-imputation. The array
373 markes files can be downloaded from www.finngen.fi/en/researchers/genotyping.
374 The protocol for genotype liftover to hg38/GRCh38 is described in detail in
375 [www.protocols.io/view/genotyping-chip-data-lift-over-to-reference-genome-](http://www.protocols.io/view/genotyping-chip-data-lift-over-to-reference-genome-xbhfi6?version_warning=no)
376 [xbhfi6?version_warning=no](http://www.protocols.io/view/genotyping-chip-data-lift-over-to-reference-genome-xbhfi6?version_warning=no), and genotype imputation protocol is described in
377 www.protocols.io/view/genotype-imputation-workflow-v3-0-xbgfijw.

378 HLA allele analysis

379 We implemented the PheWAS approach (Denny et al., 2013) for imputed alleles
380 of *HLA-A*, *-B*, *-C*, *-DRB1*, *-DQA1*, *-DQB1* and *-DPB1* genes to analyze their
381 correlation with 3,355 clinical case-control endpoints in 37 broad disease
382 categories. Each analysed phenotype included at least five cases in both
383 discovery and replication sets. HLA imputation at four-digit resolution (i.e.
384 protein-level) was conducted as described previously (Ritari et al., 2020). Briefly,
385 we used HIBAG v1.18.1 (Zheng et al., 2014) R library with a Finnish population-
386 specific HLA reference panel (n = 1,150) based on ~4,500 SNPs within the MHC
387 region (chr6:28.51-33.48 Mb; hg38/GRCh38), and considered imputation
388 posterior probabilities > 0.5 as acceptable. For association analyses, we defined
389 the imputed HLA alleles as bi-allelic SNPs and assumed additive effects of allele

388 dosages on the binary phenotype. Logistic regression models were run using
389 SPAtest v3.0.2 (Dey et al., 2017) in R v3.6.3 (R Core Team, 2020) with top 10
390 genetic principal components (PCs), age and sex as covariates. To correct for
391 multiple testing under dependency and to identify associations for validation in
392 the replication cohort, we applied adaptive Benjamini-Hochberg (Benjamini and
393 Hochberg, 2000; Kim and van de Wiel, 2008) procedure to the discovery cohort
394 SPAtest saddlepoint approximated p-values using the R library mutoss v0.1-12
395 (MuToss Coding Team et al., 2017) at FDR < 0.01 threshold. We considered an
396 association valid if the replication p-value was < 0.01 and the effect direction
397 was consistent with the discovery cohort.

398 To evaluate independent contributions of HLA alleles significantly associated with
399 multiple disease categories, we performed conditional analyses that
400 systematically included a phenotype from a different disease category as an
401 additional covariate. In this analysis we used the whole dataset (data release R5)
402 and genome-wide p-value threshold of 5×10^{-8} . To exclude phenotypes in strong
403 correlation with each other from the analysis, we first computed an all-vs-all
404 Pearson's correlation matrix between the phenotypes and removed those having
405 a correlation >0.8 with another phenotype. Association for each HLA allele with a
406 given phenotype was performed by including a different, non-correlating
407 phenotype as a covariate along with age, sex and 10 genetic PCs using SPAtest
408 as described above.

409 HLA diplotype analysis

410 To systematically study how the association effect of the primary risk allele was
411 impacted by other alleles of the same HLA gene, we performed association
412 analyses for HLA allele combinations (termed here as diplotypes). The top risk
413 alleles were identified based on the lowest significant single-allele p-value for
414 each phenotype in the discovery cohort. We performed conditional regression
415 analyses by including all the diplotypes in the same model for a given
416 phenotype. With this approach our aim was to quantify actual allelic effects as
417 distinguished from nonpredisposition to the risk allele. As described above, the
418 top 10 genetic PCs, age and sex were included as other covariates. To identify
419 significant effects relative to the top risk genotype for a given phenotype, we
420 performed a two-tailed Z-test on the obtained conditional logistic regression
421 coefficients (betas) and their standard errors.

422 HLA haplotype analysis

423 The haplotype analysis was based on the observation that in some phenotypes a
424 significant association was found both in HLA class I and class II genes. To
425 evaluate whether alleles in a class I gene affected the risk of an allele in a class II
426 gene, or vice versa, we considered combinations of alleles from both class I and
427 II. The top risk allele for each phenotype was first identified based on the lowest
428 significant single-allele p-value in the discovery cohort, and then combined with
429 alleles of a HLA gene of a different class (termed here as haplotypes). Thus, the
430 primary risk allele was studied in all available allele combinations of the
431 secondary gene. HLAs were imputed on phased genotype data obtained from
432 genotype imputation, and the combined loci under analysis were selected from
433 the same phase. All haplotypes were included in the same regression model for a
434 given phenotype. Two-tailed Z-test was used to evaluate the significance of the
435 haplotypic effects.

436 Data availability

437 The FinnGen summary statistics data can be accessed through the Finnish
438 Biobanks' FinnBB portal and the FinnGen website
439 (https://www.finngen.fi/en/access_results).

440 Code availability

441 The analysis code is available at https://github.com/FRCBS/HLA_PheWAS. The
442 FinnGen genotyping and imputation protocol is described at [https://doi-
443 org.libproxy.helsinki.fi/10.17504/protocols.io.nmndc5e](https://doi-org.libproxy.helsinki.fi/10.17504/protocols.io.nmndc5e).

444 Acknowledgements

445 The study was supported by the Academy of Finland, the Finnish Cancer
446 Association, VTR funding from the Finnish Government, and Business Finland.
447 FinnGen funding statement is available as supplementary information. We are
448 grateful to all FinnGen participants for their generous contribution to the project.

449 The funders and biobanks had no role in study design, data collection and
450 analysis, decision to publish, or preparation of the manuscript.

451 Competing interests

452 The authors declare no competing interests.

453 References

- A. Barr T, Gray M, Gray D. 2012. B Cells: Programmers of CD4 T Cell Responses. *IDDT* **12**:222–231. doi:10.2174/187152612800564446
- Bach J-F. 2018. The hygiene hypothesis in autoimmunity: the role of pathogens and commensals. *Nat Rev Immunol* **18**:105–120. doi:10.1038/nri.2017.111
- Benjamini Y, Hochberg Y. 2000. On the Adaptive Control of the False Discovery Rate in Multiple Testing With Independent Statistics. *Journal of Educational and Behavioral Statistics* **25**:60–83. doi:10.3102/10769986025001060
- Bettencourt A, Carvalho C, Leal B, Brás S, Lopes D, Martins da Silva A, Santos E, Torres T, Almeida I, Farinha F, Barbosa P, Marinho A, Selores M, Correia J, Vasconcelos C, Costa PP, da Silva BM. 2015. The Protective Role of HLA-DRB1 13 in Autoimmune Diseases. *Journal of Immunology Research* **2015**:1–6. doi:10.1155/2015/948723
- Chheda H, Palta P, Pirinen M, McCarthy S, Walter K, Koskinen S, Salomaa V, Daly M, Durbin R, Palotie A, Aittokallio T, Ripatti S. 2017. Whole-genome view of the consequences of a population bottleneck using 2926 genome sequences from Finland and United Kingdom. *Eur J Hum Genet* **25**:477–484. doi:10.1038/ejhg.2016.205
- Creary LE, Gangavarapu S, Mallempati KC, Montero-Martín G, Caillier SJ, Santaniello A, Hollenbach JA, Oksenberg JR, Fernández-Viña MA. 2019. Next-generation sequencing reveals new information about HLA allele and haplotype diversity in a large European American population. *Human Immunology* **80**:807–822. doi:10.1016/j.humimm.2019.07.275
- D’Antonio M, Reyna J, Jakubosky D, Donovan MK, Bonder M-J, Matsui H, Stegle O, Nariai N, D’Antonio-Chronowska A, Frazer KA. 2019. Systematic genetic analysis of the MHC region reveals mechanistic underpinnings of HLA type associations with disease. *eLife* **8**:e48476. doi:10.7554/eLife.48476
- Dendrou CA, Petersen J, Rossjohn J, Fugger L. 2018. HLA variation and disease. *Nat Rev Immunol* **18**:325–339. doi:10.1038/nri.2017.143
- Denny JC, Bastarache L, Ritchie MD, Carroll RJ, Zink R, Mosley JD, Field JR, Pulley JM, Ramirez AH, Bowton E, Basford MA, Carrell DS, Peissig PL, Kho AN, Pacheco JA, Rasmussen LV, Crosslin DR, Crane PK, Pathak J, Bielinski SJ, Pendergrass SA, Xu H, Hindorff LA, Li R, Manolio TA, Chute CG, Chisholm RL, Larson EB, Jarvik GP, Brilliant MH, McCarty CA, Kullo IJ, Haines JL, Crawford DC, Masys DR, Roden DM. 2013. Systematic comparison of phenome-wide association study of electronic medical record data and genome-wide association study data. *Nat Biotechnol* **31**:1102–1111. doi:10.1038/nbt.2749
- Dey R, Schmidt EM, Abecasis GR, Lee S. 2017. A Fast and Accurate Algorithm to Test for Binary Phenotypes and Its Application to PheWAS. *The American Journal of Human Genetics* **101**:37–49. doi:10.1016/j.ajhg.2017.05.014

- Diogo D, Tian C, Franklin CS, Alanne-Kinnunen M, March M, Spencer CCA, Vangjeli C, Weale ME, Mattsson H, Kilpeläinen E, Sleiman PMA, Reilly DF, McElwee J, Maranville JC, Chatterjee AK, Bhandari A, Nguyen K-DH, Estrada K, Reeve M-P, Hutz J, Bing N, John S, MacArthur DG, Salomaa V, Ripatti S, Hakonarson H, Daly MJ, Palotie A, Hinds DA, Donnelly P, Fox CS, Day-Williams AG, Plenge RM, Runz H. 2018. Phenome-wide association studies across large population cohorts support drug target validation. *Nat Commun* **9**:4285. doi:10.1038/s41467-018-06540-3
- Eike MC, Becker T, Humphreys K, Olsson M, Lie BA. 2009. Conditional analyses on the T1DGC MHC dataset: novel associations with type 1 diabetes around HLA-G and confirmation of HLA-B. *Genes Immun* **10**:56–67. doi:10.1038/gene.2008.74
- Ercolini AM, Miller SD. 2009. The role of infections in autoimmune disease. *Clinical & Experimental Immunology* **155**:1–15. doi:10.1111/j.1365-2249.2008.03834.x
- Furukawa H, Oka S, Tsuchiya N, Shimada K, Hashimoto A, Tohma S, Kawasaki A. 2017. The role of common protective alleles HLA-DRB1*13 among systemic autoimmune diseases. *Genes Immun* **18**:1–7. doi:10.1038/gene.2016.40
- Gregersen PK, Silver J, Winchester RJ. 1987. The shared epitope hypothesis. an approach to understanding the molecular genetics of susceptibility to rheumatoid arthritis. *Arthritis & Rheumatism* **30**:1205–1213. doi:10.1002/art.1780301102
- Hirata J, Hosomichi K, Sakaue S, Kanai M, Nakaoka H, Ishigaki K, Suzuki K, Akiyama M, Kishikawa T, Ogawa K, Masuda T, Yamamoto K, Hirata M, Matsuda K, Momozawa Y, Inoue I, Kubo M, Kamatani Y, Okada Y. 2019. Genetic and phenotypic landscape of the major histocompatibility complex region in the Japanese population. *Nat Genet* **51**:470–480. doi:10.1038/s41588-018-0336-0
- Hu X, Deutsch AJ, Lenz TL, Onengut-Gumuscu S, Han B, Chen W-M, Howson JMM, Todd JA, de Bakker PIW, Rich SS, Raychaudhuri S. 2015. Additive and interaction effects at three amino acid positions in HLA-DQ and HLA-DR molecules drive type 1 diabetes risk. *Nat Genet* **47**:898–905. doi:10.1038/ng.3353
- Hurley CK, Kempenich J, Wadsworth K, Sauter J, Hofmann JA, Schefzyk D, Schmidt AH, Galarza P, Cardozo MBR, Dudkiewicz M, Houdova L, Jindra P, Sorensen BS, Jagannathan L, Mathur A, Linjama T, Torosian T, Freudenberger R, Manolis A, Mavrommatis J, Cereb N, Manor S, Shriki N, Sacchi N, Ameen R, Fisher R, Dunckley H, Andersen I, Alaskar A, Alzahrani M, Hajeer A, Jawdat D, Nicoloso G, Kupatawintu P, Cho L, Kaur A, Bengtsson M, Dehn J. 2020. Common, intermediate and well-documented HLA alleles in world populations: CIWD version 3.0.0. *HLA* **95**:516–531. doi:10.1111/tan.13811
- Karnes JH, Bastarache L, Shaffer CM, Gaudieri S, Xu Y, Glazer AM, Mosley JD, Zhao S, Raychaudhuri S, Mallal S, Ye Z, Mayer JG, Brilliant MH, Hebring SJ, Roden DM, Phillips EJ, Denny JC. 2017. Phenome-wide scanning identifies multiple diseases and disease severity phenotypes associated with HLA variants. *Sci Transl Med* **9**:eaai8708. doi:10.1126/scitranslmed.aai8708
- Kim KI, van de Wiel MA. 2008. Effects of dependence in high-dimensional multiple testing problems. *BMC Bioinformatics* **9**:114. doi:10.1186/1471-2105-9-114
- Lenz TL, Deutsch AJ, Han B, Hu X, Okada Y, Eyre S, Knapp M, Zhernakova A, Huizinga TWJ, Abecasis G, Becker J, Boeckxstaens GE, Chen W-M, Franke A, Gladman DD, Gockel I, Gutierrez-Achury J, Martin J, Nair RP, Nöthen MM, Onengut-Gumuscu S, Rahman P, Rantapää-Dahlqvist S, Stuart PE, Tsoi LC, van Heel DA, Worthington J, Wouters MM, Klareskog L, Elder JT, Gregersen

- PK, Schumacher J, Rich SS, Wijmenga C, Sunyaev SR, de Bakker PIW, Raychaudhuri S. 2015. Widespread non-additive and interaction effects within HLA loci modulate the risk of autoimmune diseases. *Nat Genet* **47**:1085–1090. doi:10.1038/ng.3379
- Linjama T, Eberhard H-P, Peräsaari J, Müller C, Korhonen M. 2018. A European HLA Isolate and Its Implications for Hematopoietic Stem Cell Transplant Donor Procurement. *Biology of Blood and Marrow Transplantation* **24**:587–593. doi:10.1016/j.bbmt.2017.10.010
- Liu J, Ye Z, Mayer JG, Hoch BA, Green C, Rolak L, Cold C, Khor S-S, Zheng X, Miyagawa T, Tokunaga K, Brilliant MH, Hebring SJ. 2016. Phenome-wide association study maps new diseases to the human major histocompatibility complex region. *J Med Genet* **53**:681–689. doi:10.1136/jmedgenet-2016-103867
- Matzaraki V, Kumar V, Wijmenga C, Zhernakova A. 2017. The MHC locus and genetic susceptibility to autoimmune and infectious diseases. *Genome Biol* **18**:76. doi:10.1186/s13059-017-1207-1
- Mikk M-L, Heikkinen T, El-Amir MI, Kiviniemi M, Laine A-P, Härkönen T, Veijola R, Toppari J, Knip M, Ilonen J, the Finnish Paediatric Diabetes Register. 2017. The association of the *HLA-A*24:02*, *B*39:01* and *B*39:06* alleles with type 1 diabetes is restricted to specific *HLA-DR/DQ* haplotypes in Finns. *HLA* **89**:215–224. doi:10.1111/tan.12967
- MuToss Coding Team, Blanchard G, Dickhaus T, Hack N, Konietzschke F, Rohmeyer K, Rosenblatt J, Scheer M, Werft W. 2017. mutoss: Unified Multiple Testing Procedures.
- Nasa GL, Cottoni F, Mulargia M, Carcassi C, Vacca A, Pizzati A, Ledda A, Montesu MA, Cerimele D, Contu L. 1995. HLA antigen distribution in different clinical subgroups demonstrates genetic heterogeneity in lichen planus. *British Journal of Dermatology* **132**:897–900. doi:10.1111/j.1365-2133.1995.tb16945.x
- Noble JA, Valdes AM. 2011. Genetics of the HLA Region in the Prediction of Type 1 Diabetes. *Curr Diab Rep* **11**:533–542. doi:10.1007/s11892-011-0223-x
- Okada Y, Suzuki A, Ikari K, Terao C, Kochi Y, Ohmura K, Higasa K, Akiyama M, Ashikawa K, Kanai M, Hirata J, Suita N, Teo Y-Y, Xu H, Bae S-C, Takahashi A, Momozawa Y, Matsuda K, Momohara S, Taniguchi A, Yamada R, Mimori T, Kubo M, Brown MA, Raychaudhuri S, Matsuda F, Yamanaka H, Kamatani Y, Yamamoto K. 2016. Contribution of a Non-classical HLA Gene, HLA-DOA, to the Risk of Rheumatoid Arthritis. *The American Journal of Human Genetics* **99**:366–374. doi:10.1016/j.ajhg.2016.06.019
- Oldstone MBA. 1998. Molecular mimicry and immune-mediated diseases. *FASEB J* **12**:1255–1265. doi:10.1096/fasebj.12.13.1255
- Porter K, Klouda P, Scully C, Bidwell J, Porter S. 1993. Class I and II HLA antigens in British patients with oral lichen planus. *Oral Surgery, Oral Medicine, Oral Pathology* **75**:176–180. doi:10.1016/0030-4220(93)90090-Q
- Pugliese A, Gianani R, Moromisato R, Awdeh ZL, Alper CA, Erlich HA, Jackson RA, Eisenbarth GS. 1995. HLA-DQB1*0602 Is Associated With Dominant Protection From Diabetes Even Among Islet Cell Antibody-Positive First-Degree Relatives of Patients with IDDM. *Diabetes* **44**:608–613. doi:10.2337/diab.44.6.608
- Queiro R, Gonzalez S, López-Larrea C, Alperi M, Sarasqueta C, Riestra J, Ballina J. 2006. HLA-C locus alleles may modulate the clinical expression of psoriatic arthritis. *Arthritis Res Ther* **8**:R185. doi:10.1186/ar2097
- R Core Team. 2020. R: A language and environment for statistical computing. Vienna, Austria: R Foundation for Statistical Computing.
- Raychaudhuri S, Sandor C, Stahl EA, Freudenberg J, Lee H-S, Jia X, Alfredsson L, Padyukov L, Klareskog L, Worthington J, Siminovitch KA, Bae S-C, Plenge

- RM, Gregersen PK, de Bakker PIW. 2012. Five amino acids in three HLA proteins explain most of the association between MHC and seropositive rheumatoid arthritis. *Nat Genet* **44**:291–296. doi:10.1038/ng.1076
- Ritari J, Hyvärinen K, Clancy J, FinnGen, Partanen J, Koskela S. 2020. Increasing accuracy of HLA imputation by a population-specific reference panel in a FinnGen biobank cohort. *NAR Genomics and Bioinformatics* **2**:lqaa030. doi:10.1093/nargab/lqaa030
- Sfriso P, Ghirardello A, Botsios C, Tonon M, Zen M, Bassi N, Bassetto F, Doria A. 2010. Infections and autoimmunity: the multifaceted relationship. *Journal of Leukocyte Biology* **87**:385–395. doi:10.1189/jlb.0709517
- The International HIV Controllers Study. 2010. The Major Genetic Determinants of HIV-1 Control Affect HLA Class I Peptide Presentation. *Science* **330**:1551–1557. doi:10.1126/science.1195271
- The MHC sequencing consortium. 1999. Complete sequence and gene map of a human major histocompatibility complex. *Nature* **401**:921–923. doi:10.1038/44853
- Thorsby E. 2009. A short history of HLA. *Tissue Antigens* **74**:101–116. doi:10.1111/j.1399-0039.2009.01291.x
- Tian C, Hromatka BS, Kiefer AK, Eriksson N, Noble SM, Tung JY, Hinds DA. 2017. Genome-wide association and HLA region fine-mapping studies identify susceptibility loci for multiple common infections. *Nat Commun* **8**:599. doi:10.1038/s41467-017-00257-5
- Trowsdale J, Knight JC. 2013. Major Histocompatibility Complex Genomics and Human Disease. *Annu Rev Genom Hum Genet* **14**:301–323. doi:10.1146/annurev-genom-091212-153455
- Tsai S, Santamaria P. 2013. MHC Class II Polymorphisms, Autoreactive T-Cells, and Autoimmunity. *Front Immunol* **4**. doi:10.3389/fimmu.2013.00321
- Tuokko J, Reijonen H, Ilonen J, Anttila K, Nikkari S, Mottonen T, Yli-Kerttula U, Toivanen A. 1997. Increase of HLA-DRB1*0408 and -DQB1*0301 in HLA-B27 positive reactive arthritis. *Annals of the Rheumatic Diseases* **56**:37–40. doi:10.1136/ard.56.1.37
- van der Helm-van Mil AHM, Huizinga TWJ, Schreuder GMTh, Breedveld FC, de Vries RRP, Toes REM. 2005. An independent role of protective HLA class II alleles in rheumatoid arthritis severity and susceptibility. *Arthritis Rheum* **52**:2637–2644. doi:10.1002/art.21272
- van Lummel M, Buis DTP, Ringeling C, de Ru AH, Pool J, Papadopoulos GK, van Veelen PA, Reijonen H, Drijfhout JW, Roep BO. 2019. Epitope Stealing as a Mechanism of Dominant Protection by HLA-DQ6 in Type 1 Diabetes. *Diabetes* **68**:787–795. doi:10.2337/db18-0501
- Verma A, Lucas A, Verma SS, Zhang Y, Josyula N, Khan A, Hartzel DN, Lavage DR, Leader J, Ritchie MD, Pendergrass SA. 2018. PheWAS and Beyond: The Landscape of Associations with Medical Diagnoses and Clinical Measures across 38,662 Individuals from Geisinger. *The American Journal of Human Genetics* **102**:592–608. doi:10.1016/j.ajhg.2018.02.017
- Wu J-S, James I, Wei Qiu, Castley A, Christiansen FT, Carroll WM, Mastaglia FL, Kermode AG. 2010. Influence of HLA-DRB1 allele heterogeneity on disease risk and clinical course in a West Australian MS cohort: a high-resolution genotyping study. *Mult Scler* **16**:526–532. doi:10.1177/1352458510362997
- Wucherpfennig KW, Strominger JL. 1995. Molecular mimicry in T cell-mediated autoimmunity: Viral peptides activate human T cell clones specific for myelin basic protein. *Cell* **80**:695–705. doi:10.1016/0092-8674(95)90348-8
- Zheng X, Shen J, Cox C, Wakefield JC, Ehm MG, Nelson MR, Weir BS. 2014. HIBAG—HLA genotype imputation with attribute bagging. *Pharmacogenomics J* **14**:192–200. doi:10.1038/tpj.2013.18

