

Supplemental Figures and Table

Supplemental Figures

Fig S1 (related to Fig 1) Characteristics of 30 SARS-CoV-2+ patient samples used for transcriptome analysis.

Fig S2 (related to Fig 2). Relationship between age, sex, and NP CXCL10 in 140 SARS-CoV-2+ patients

Fig S3 (related to Fig 5). Expression level of full-length ACE2 and the truncated variant dACE2 in mock-treated airway epithelial organoids following rhinovirus infection (HRV-01A).

Fig S4. (related to Fig 5) Time course, cell type specificity, and entry receptor expression for HRV-01A in airway epithelial organoid cultures.

Fig S5 (related to Fig 7). Estimated doubling time for SARS-CoV-2 +/- BX795 in low MOI infection

Supplemental Table

Table S1 (related to Fig 3) Clinical description of longitudinal samples

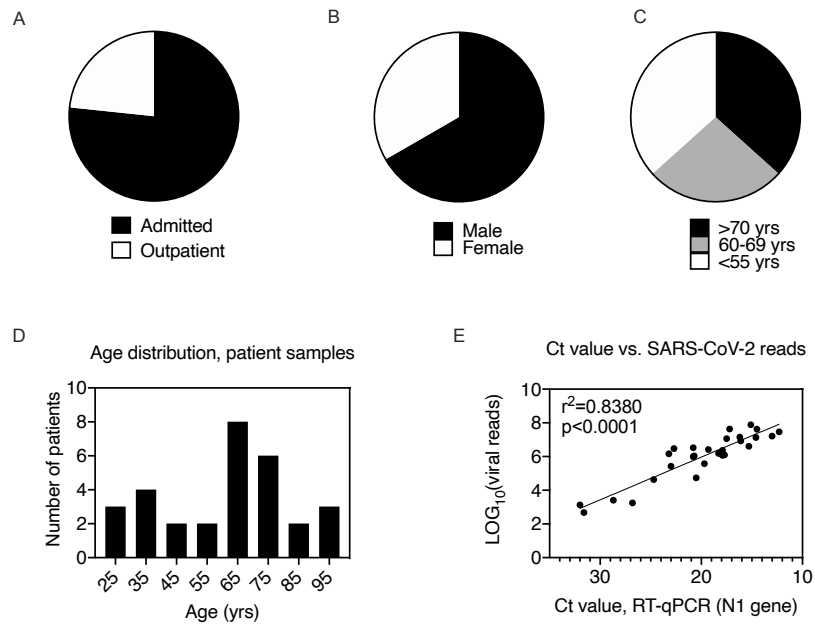


Fig S1 (related to Fig 1). Characteristics of 30 SARS-CoV-2+ patient samples used for transcriptome analysis.

(A-C) Patient admission status, gender, and age by category.

(D) Patient age distribution by decade. Bin center is shown on x-axis.

(E) Correlation between SARS-CoV-2 viral load measured by RT-qPCR for the viral N1 gene and number of reads mapping to SARS-CoV-2 genome by RNASeq.

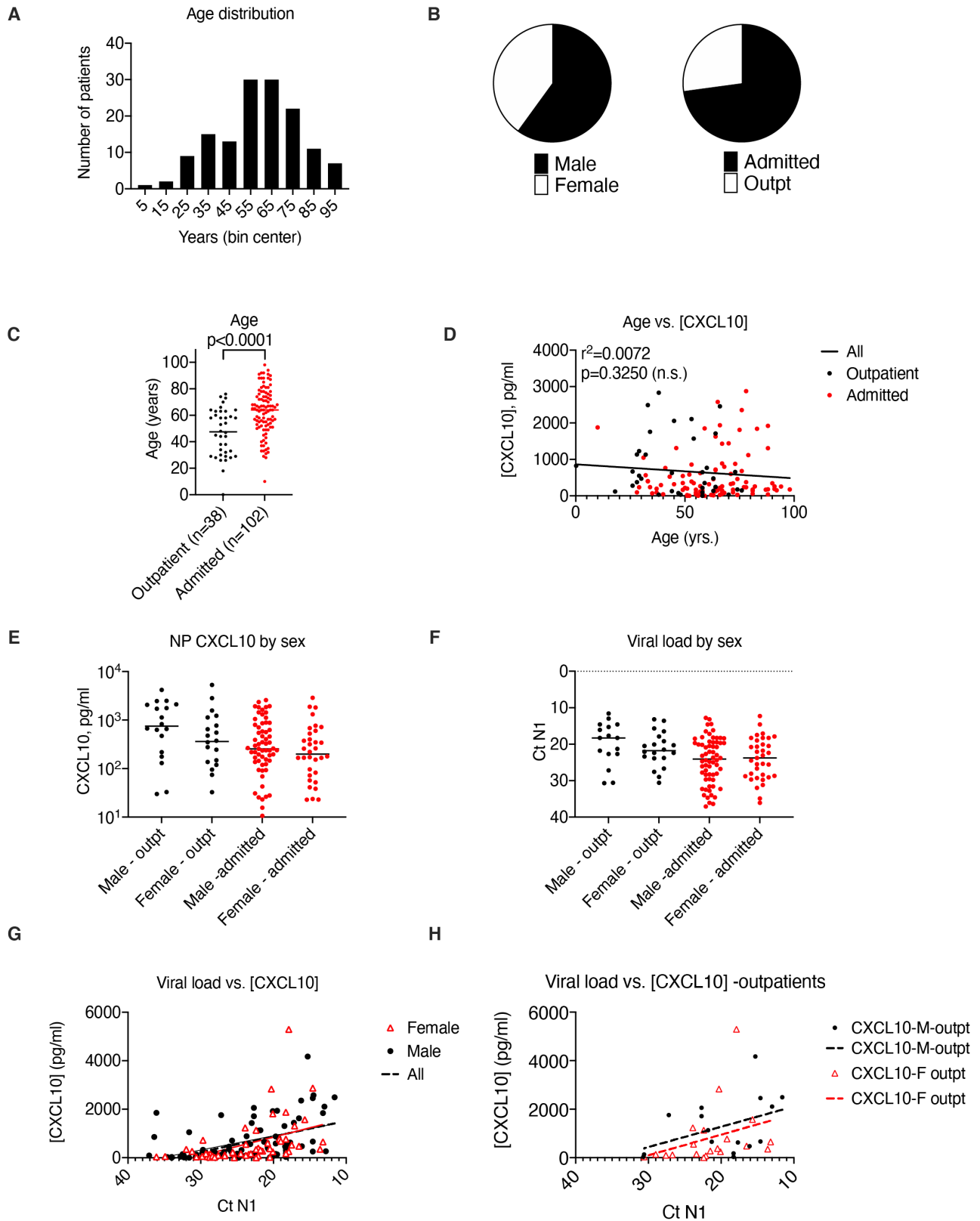


Fig S2 (related to Fig 2). Relationship between age, sex, and NP CXCL10 in 140 SARS-CoV-2+ patients

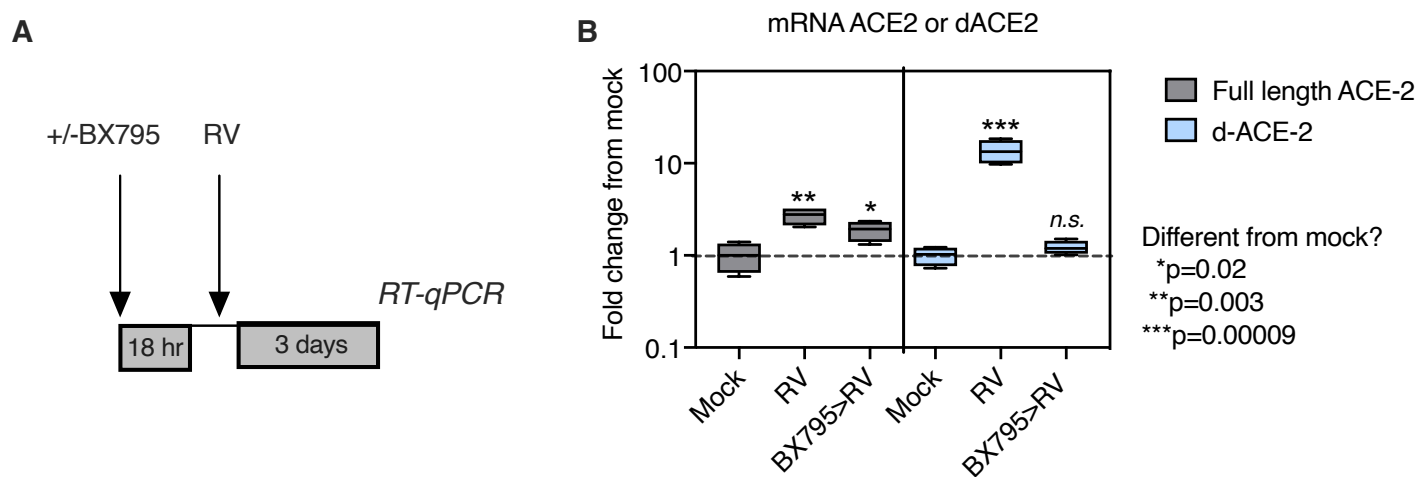


Fig S3 (related to Fig 5). Expression level of full-length ACE2 and the truncated variant dACE2 in mock-treated airway epithelial organoids following rhinovirus infection (HRV-01A).

- (A) Organoids were mock infected or infected with rhinovirus. Some rhinovirus-infected cultures were pre-treated for 18 hr with 6 micromolar BX795 prior to infection with rhinovirus.
- (B) RT-qPCR was performed to quantify transcripts for full length ACE-2 or dACE2. Plot shows mean and range (min to max) of 4 biological replicates per condition. Asterisks indicate significant differences from mock for each condition by the student unpaired t-test. *n.s.*= not significant

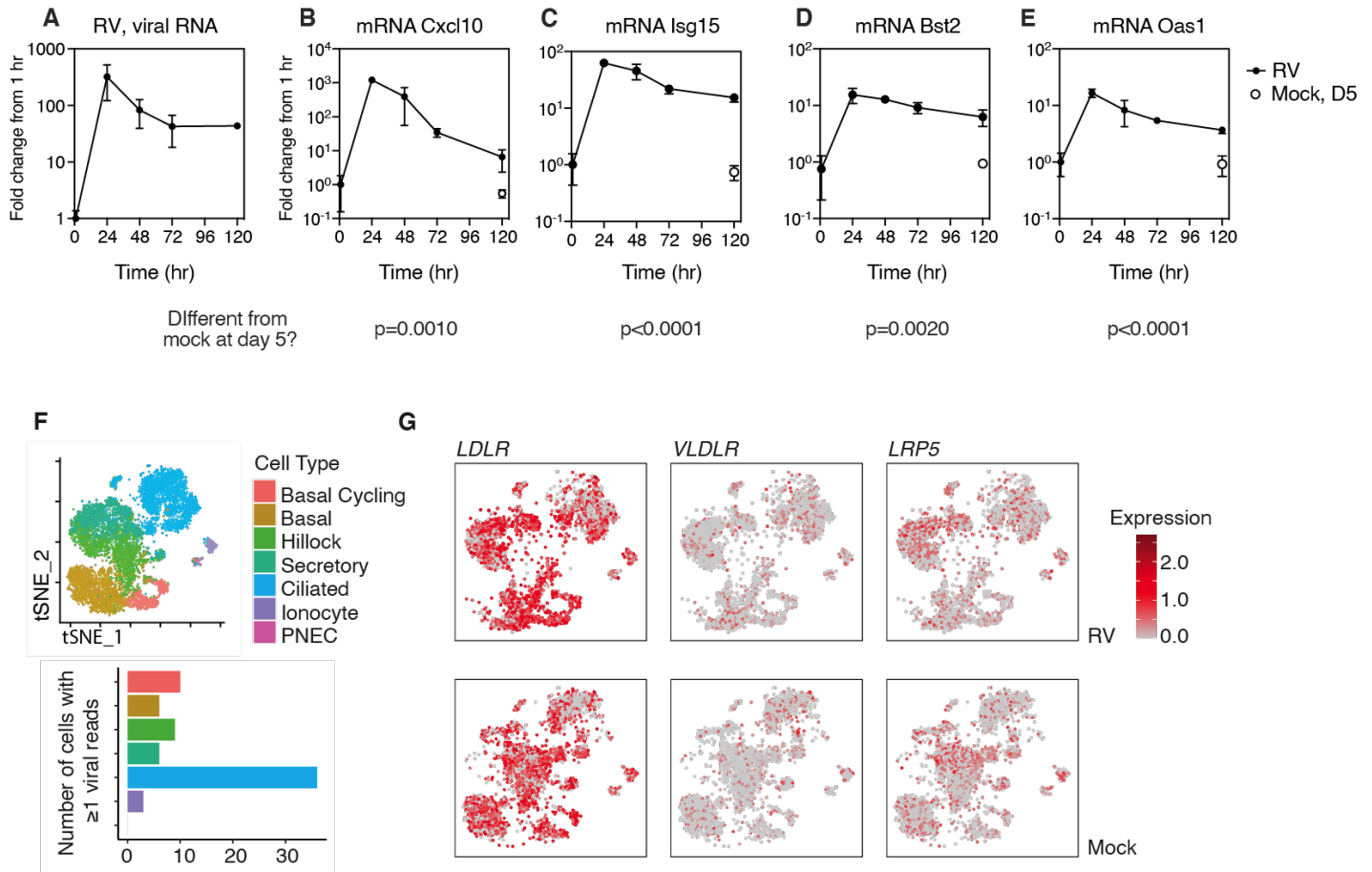


Figure S4 (related to Fig 5). RV1A replication in differentiated primary human bronchial epithelial cultures and entry receptor expression.

(A-E) Viral RNA level and ISG mRNA levels are graphed as fold change from ISG level at t=1 hr (post-inoculation time point). Open symbols represent ISG levels in mock-infected cultures at day 5. P-value for difference between mock and RV-infected ISG levels at day 5 are shown for each ISG (by student; unpaired t-test.). Symbols represent mean and S.D. of 3-5 biological replicates per condition.

(A) Cell type specific rhinovirus infection in human bronchial epithelial organoid cultures, 5 days post infection with rhinovirus (HRV-01A) or mock-infection. Top panel shows cell types present; bottom panel shows cell type specific distribution of 70 cells containing at least one viral read.

(B) Expression level of entry receptors for HRV-01A (LDLR, VLDLR, LRP5), in rhinovirus infected (top) or in mock-treated cultures (bottom panels.)

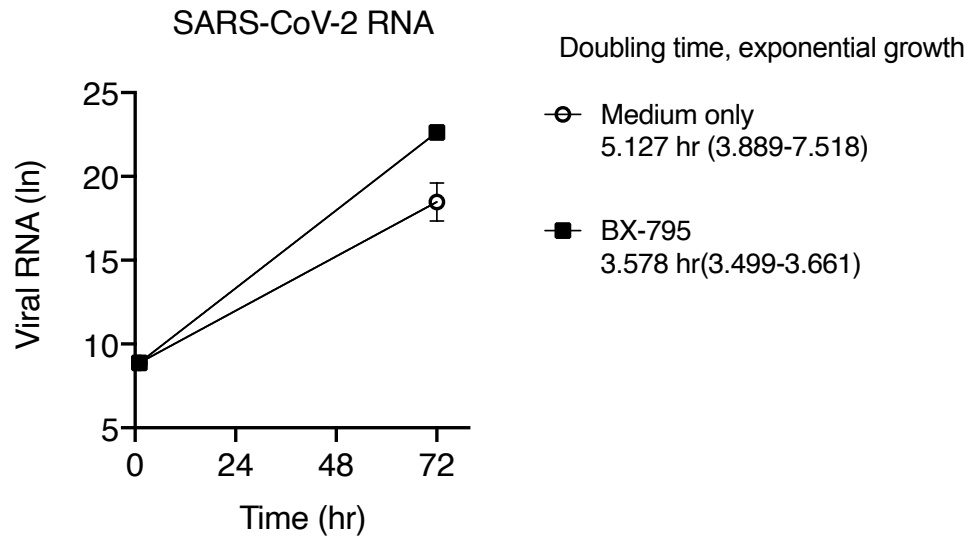


Fig S5 (related to Fig 7). Estimated doubling time for SARS-CoV-2 +/- BX795 in low MOI infection

Table S1 (related to Fig 3). Clinical information for longitudinal patients						
Viral load low to high				First sample in series		
Patient	Age	Sex	Presentation	Clinical course	NP CXCL10, pg/ml	Ct value, N1
L2	60s	M	screen+, asymptomatic	no SARS-CoV-2 symptoms	not detected	34.6
L12	50s	M	screen+, asymptomatic	no SARS-CoV-2 symptoms	31	31.9
L39	70s	F	fever	moderate course, no ICU	66	30.7
L42	80s	F	fever and cough	no oxygen requirement, no ICU	103	32.8
L5	80s	M	fever, cough, dyspnea	moderate course, no ICU	137	29.4
L44	90s	F	fever and cough	no oxygen requirement, no ICU	152	28.7
Viral load high to low				First sample in series		
Patient	Age	Sex	Presentation	Clinical course	NP CXCL10, pg/ml	Ct value, N1
L8	80s	F	confusion, hypoxia	moderate course, no ICU	1745	18.6
L45	90s	F	fever, dyspnea	moderate course, no ICU	452	17.4
L18	70s	F	dyspnea	moderate course, no ICU	not available	15.5
L1	60s	M	cough, hypoxia	moderate course, no ICU	675	14.8
L30	70s	F	fever, dyspnea	moderate course, no ICU	3109	14.6
L23	90s	F	screen+, asymptomatic	no oxygen requirement, no ICU	4602	12.6
L41	70s	M	cough	no oxygen requirement, no ICU	3270	10.8