

## Title page

### Title

The impact of the coronavirus disease 2019 (COVID-19) outbreak on cancer practice in Japan:  
using an administrative database

### Author Names

Hisashi Itoshima<sup>1</sup> MD, Yuka Asami<sup>1</sup> BSN, Jung-ho Shin<sup>1</sup> DDS, MPH, Daisuke Takada<sup>1</sup> MD,  
Tetsuji Morishita<sup>1</sup> MD, PhD, Seiko Bun<sup>1,2</sup> MSc, DrPH, Takuya Okuno<sup>1</sup> MD, Susumu Kunisawa<sup>1</sup>  
MD, PhD, Yuichi Imanaka<sup>1</sup> MD, MPH, PhD.

### Authors' institution

<sup>1</sup> Department of Healthcare Economics and Quality Management, Graduate School of Medicine,  
Kyoto University, Kyoto, Japan.

<sup>2</sup> Department of Pharmacy, National Center for Child Health and Development Hospital,  
Setagaya-ku, Tokyo, Japan.

### E-mail

Hisashi Itoshima: [itoshima.hisashi.48a@st.kyoto-u.ac.jp](mailto:itoshima.hisashi.48a@st.kyoto-u.ac.jp)

Yuka Asami: [asami.yuka.73m@st.kyoto-u.ac.jp](mailto:asami.yuka.73m@st.kyoto-u.ac.jp)

Jung-ho Shin: [shin.jungho.76v@st.kyoto-u.ac.jp](mailto:shin.jungho.76v@st.kyoto-u.ac.jp)

Daisuke Takada: [takada.daisuke.76a@st.kyoto-u.ac.jp](mailto:takada.daisuke.76a@st.kyoto-u.ac.jp)

Tetsuji Morishita: [morishita.tetsuji.42z@st.kyoto-u.ac.jp](mailto:morishita.tetsuji.42z@st.kyoto-u.ac.jp)

Seiko Bun: [bun.seiko.58w@st.kyoto-u.ac.jp](mailto:bun.seiko.58w@st.kyoto-u.ac.jp)

Takuya Okuno: [okuno.takuya.54e@st.kyoto-u.ac.jp](mailto:okuno.takuya.54e@st.kyoto-u.ac.jp)

Susumu Kunisawa: [kunisawa.susumu.2v@kyoto-u.ac.jp](mailto:kunisawa.susumu.2v@kyoto-u.ac.jp)

Yuichi Imanaka: [imanaka-y@umin.net](mailto:imanaka-y@umin.net)

### **Corresponding Author**

Prof. Yuichi Imanaka, Department of Healthcare Economics and Quality Management, Graduate School of Medicine, Kyoto University, Yoshida Konoe - cho, Kyoto 606 - 8501, Japan.

Phone: +81-75-753-4454

Fax: +81-75-753-4455

Email: [imanaka-y@umin.net](mailto:imanaka-y@umin.net)

## **Abstract**

### **Background:**

Recent researches reported the impact of the coronavirus disease 2019 (COVID – 19) pandemic on the clinical practice of specific type cancers. The aim of this study was to reveal the impact of the COVID-19 outbreak on the clinical practice of various cancers.

### **Methods:**

We included hospitalized patients aged 18 years or older diagnosed between July 2018 and June 2020 with one of the top 12 most common cancers in Japan (colon/rectum, lung, gastric, breast, bladder & urinary tract, pancreas, non-Hodgkin lymphoma, liver, prostate, esophagus, uterus, and gallbladder & biliary tract) using Diagnostic Procedure Combination data, an administrative database in Japan. The intervention was defined April 2020 based on a declaration of emergency from Japanese government. The change volume of number of monthly admissions with each cancer was tested by interrupted time series (ITS) analysis, and monthly cases with radical surgery or chemotherapy for each cancer were described.

### **Results:**

403,344 cases were included during the study period. The most common cancer was colon/rectum (20.5%), followed by lung (17.5%). In almost cancer cases, the number of admissions decreased in May 2020. In particular, colorectal, lung, gastric, breast, uterine, or esophageal cancer cases decreased by over 10%. The number of admissions with surgery or chemotherapy decreased in colorectal, lung, gastric, breast, uterine, or esophageal cancer. ITS analysis indicated that cases with gastric or esophageal cancer were affected more than other type of cancer.

## **Conclusions:**

The COVID-19 outbreak has a negative impact on the number of admission cases with cancer; the magnitude of impact varied by cancer diagnosis.

**Keyword:** COVID-19; Cancer; Surgery; Chemotherapy; Interrupted time series analysis

## INTRODUCTION

The outbreak of severe acute respiratory syndrome coronavirus 2 (SARS-Cov-2) is affecting a wide range of clinical practices. Since the outbreak in December 2019, more than 30 million cases of coronavirus disease 2019 (COVID-19) have been reported worldwide, including more than 959,000 deaths [1]. The symptoms of COVID-19 vary from fever and common cold symptoms to acute respiratory distress syndrome, septic shock, and death [2].

In the field of oncology, many academic societies, educational institutions, and government agencies have announced recommendations during COVID-19 pandemic [3-6]. The European Society for Medical Oncology (ESMO) has divided its treatment priorities into three phases (High, Medium, Low priority) [5]. For each type of cancer, the initial treatment is given high priority while considering the degree of epidemic spread and the degree of shortage of human/material resources [5,6].

In Japan, the number of patients with COVID-19 has increased since the Japanese government declared a state of emergency without urban lockdown on April 7, 2020 [7]. The increase of COVID-19 patients has caused a temporary shortage of personal protective equipment (PPE) and an increase in hospital-acquired infections [8]. Therefore, it brings serious concerns about shortages of material/human resources, Japanese academic societies announced the recommendation of treatment for cancer in the COVID-19 pandemic, as have academic societies worldwide [9,10]. Previous studies have indicated that the COVID-19 pandemic has had an impact on cancer treatment, such as a decrease in the number of operations for patients with malignant tumors [11,12]. However, few studies have reported general effects, such as a decrease of hospital admissions related to the impact of the COVID-19 pandemic in the field of

oncology. The aim of our study was to reveal the impact of the COVID-19 outbreak on the clinical practice of various cancers.

## **METHODS**

### **Data source and study participants**

We analyzed Diagnosis Procedure Combination (DPC) data from the Quality Indicator/Improvement Project (QIP) database, which was administered by the Department of Healthcare Economics and Quality Management, Kyoto University. The QIP database has DPC data from acute care hospitals voluntarily participating in the project. The number of participant hospitals was over 500, which took place all over Japan and included both public and private hospitals [13]. In Japan, the DPC/Per-Diem Payment System (PDPS) is a prospective payment system adopted for acute care hospitals. The number of general beds applied with the DPC/PDPS in 2018 was 482,618, which was 54% of all general beds of Japanese hospitals (482,618/891,872) [14,15]. The DPC data contain claims and clinical summary data, which include hospital identifiers, admission and discharge statuses (hospital death or not), cause of admission, main diagnosis, the most and second-most medical resource-intensive diagnoses, up to 10 comorbidities, and 10 complications. All diagnoses were classified based on the International Classification of Diseases, 10<sup>th</sup> Revision (ICD-10) codes. For further details, refer to the following published paper [13].

We included patients who were aged 18 years or older and admitted between July 1, 2018 and June 30, 2020 and whose both major and most most-medical resource-intensive diagnosis was a cancer diagnosis based on ICD-10 codes. Among these cases, we analyzed in detail the top

12 most common types of cancer in Japan (colon/rectum, lung, gastric, breast, bladder & urinary tract, pancreas, non-Hodgkin lymphoma, liver, prostate, esophagus, uterus, and gallbladder & biliary tract) based on the WHO's research [16]. We used claims codes for surgical procedures classification codes from the Ministry of Health and Welfare in Japan for identifying the surgical procedure.

### **Statistical analyses**

We divided the population into two: those who were admitted and discharged between July 2018 and June 2019 and between July 2019 and June 2020 for year-over-year comparisons. Because the DPC data were coded on the day of discharge, the data of patients who were not discharged before the end of June 2020 were not available, even though their date of admission was before June 30, 2020. We then described the total number of admission cases, the cases with any radical surgical procedure, and cases with chemotherapy for each cancer. Furthermore, we assessed the monthly ratio of the proportion of admission cases with each cancer diagnosis to the total number of cancer cases.

The ratio of proportions = proportion of admission cases [2019/07-2020/06] / proportion of admission cases [2018/07-2019/06]

where

proportion of admission cases [2019/7-2020/6] = number of admission cases with each diagnosis of cancer per month between July 2019 and June 2020 / number of admission cases with all cancers per month between July 2019 and June 2020

and where

proportion of admission cases [2018/7-2019/6] = number of admission cases with each diagnosis of cancer per month between July 2018 and June 2019 / number of admission cases with all cancers per month between July 2018 and June 2019.

Continuous variables were presented as median, interquartile range, and categorical variables were presented as numbers and proportions. We performed an interrupted time series (ITS) analysis, with segmented and Poisson regressions, taking into account seasonality, secular trends, and overdispersion of data, to evaluate the impact of the COVID-19 pandemic on population-level admissions [17,18]. Seasonality was considered by including harmonic terms (sines and cosines) with 12-month periods to our model [17]. The validity of the Poisson regression model was assessed by checking the correlograms (functions of autocorrelation and partial autocorrelation) and the residuals.

The Japanese government declared a state of emergency on April 7, 2020, and because our study examined the number of admission cases per month, we designated April 2020 as the beginning of intervention and estimated that the declaration of emergency with COVID-19 pandemic would rapidly decrease the admission volume after April 7, 2020 [7]. Because the DPC data were generated on the day of discharge, our model assessed the change of monthly admission volume based on the date of discharge.

Statistical significance was regarded as a two-sided P-value <0.05. All analyses were performed using R 3.6.3 (R Foundation for Statistical Computing, Vienna, Austria).

### **Ethical considerations**

The present study was approved by the ethics committee of Kyoto University (approval number: R0135), and we did not require informed consent because of the use of anonymized data, in



accordance with the Ethical Guidelines for Medical and Health Research Involving Human Subjects, as stipulated by the Japanese Government. We declare that there are no conflicts of interest in the manuscript.

### **Role of the Funding Source**

The funders had no role in the study design, data collection and analysis, the manuscript preparation. The corresponding author had full access to all the data and had final responsibility for the decision to submit for publication.

## **RESULTS**

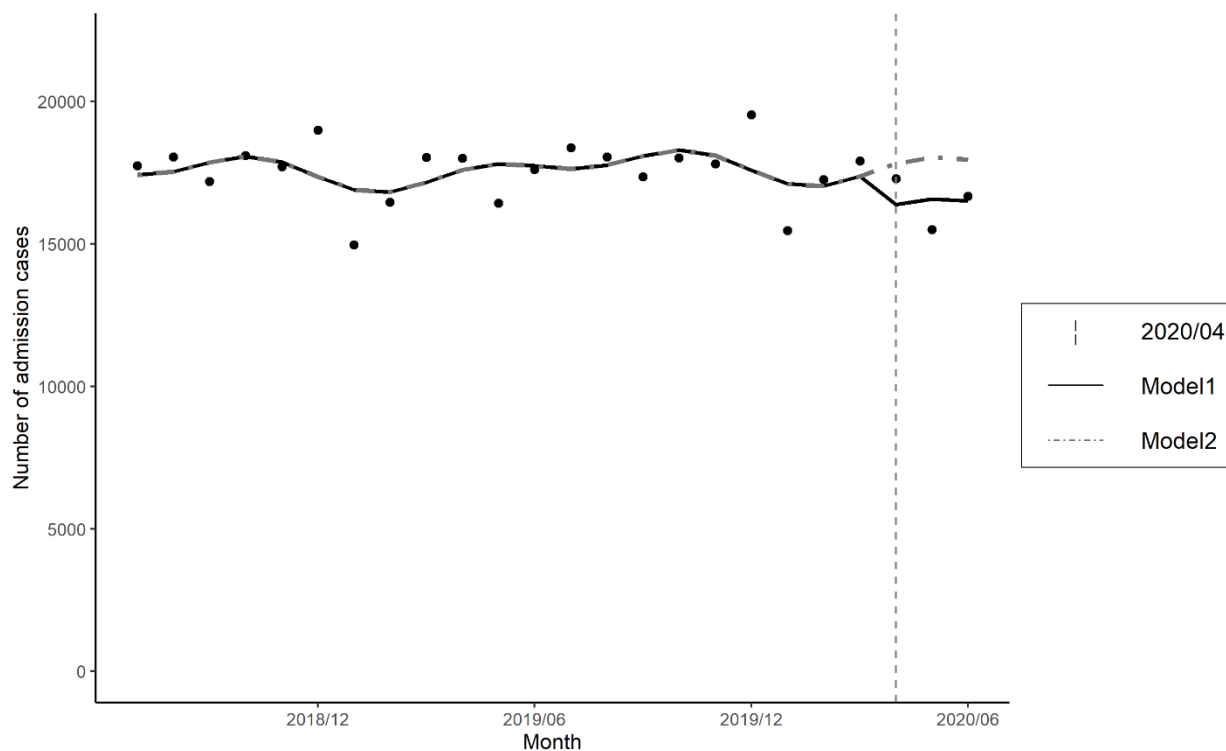
We included a total of 403,344 cases with any cancer diagnosis, in accordance with the top 12 most common types of cancer during the study period. The median age was 72 years old, and 59% of the study population were males. The most common primary lesion was colorectal (20.5%), followed by lung (17.5%) and stomach (12.3%). Patients who underwent any radical surgery or any chemotherapy were 33.7% and 36.4%, respectively (Table1). The characteristics of the study population with each cancer diagnosis case were described in Supplementary Table1.

For almost all cancer cases, the number of admission cases decreased in May 2020 compared with May 2019. In particular, colorectal, lung, gastric, breast, uterine, and esophageal cancer cases decreased by over 10% (Table2). The monthly ratio of the proportion of each cancer case to all cancer cases was near 1. However, only the proportion of gastric cancer cases decreased (Table2). The trends in the number of cases for each cancer diagnosis are shown in Supplementary Figure1. The number of cases in June largely decreased because the study population contained the cases that were admitted and discharged by the end of June.

The range of decrease of cases with any radical surgical procedure and cases with chemotherapy varied depending on the type of cancer (Table3). In May 2020, the number of cases with colorectal, lung, gastric, or esophageal cancer with surgery decreased by more than 10% compared with those in the previous year. The number of cases for chemotherapy with lung, gastric, breast, or uterus cancer decreased by more than 10% compared with those in the previous year. In contrast, cases of non-Hodgkin lymphoma, prostate, pancreas, biliary duct cancer reduction in hospital admissions was less than 10% in May 2020 compared with other types of cancer.

We conducted ITS analysis for the number of cases for the total study population and each type of cancer diagnosis. The results indicated that the COVID-19 pandemic had a negative impact on the number of cases for most types of cancer (Table4). In particular, the number of cases with gastric and esophageal cancer was affected more. The result of ITS analysis for the overall study population is described in Figure1. In the ITS analysis, the number of cases per month was counted on the basis of the date of discharge. These results are shown in Supplementary Table2.

**Figure1. Interrupted time series with level change regression model for the overall study population**



Model1: Predicted trend based on the seasonally adjusted regression model during the COVID-19 outbreak.

Model2: Counterfactual scenario (COVID-19 outbreak did not occur).

## DISCUSSION

Regarding cancer practice during the COVID-19 pandemic, one of the main concerns is it might delay the diagnosis and treatment of cancer. Our study indicates that cancer care needed to hospitalize was affected by the COVID-19 outbreak in many cancer types. As the number of patients infected with COVID-19 increased, the Japanese government declared a state of emergency, and as a result, the number of admission cases with most types of cancer has decreased, with the lowest number in May 2020. Our study also showed that the impact differed

according to the types of cancer. For cases with non-Hodgkin lymphoma, prostate, pancreas or gallbladder & biliary tract cancer, the reduction in the number of hospitalizations was less than 10% compared with other types of cancer at May, 2020. These results might have been influenced by academic recommendations or by the biological grade of the cancer itself.

Pancreatic cancer was reported with a tumor doubling time of 159 days, and a cellular doubling time of 56 hours was reported in gallbladder cancer. Both cancers were known for poor overall survival [19-21]. Although there are no recommendations for non-Hodgkin's lymphoma from a Japanese academic society, the European Society for Medical Oncology (ESMO) defined treatment of non-Hodgkin's lymphoma as high or medium priority [5]. The American Society of Hematology also recommended that chemotherapies such as R-CHOP (rituximab plus cyclophosphamide, doxorubicin, vincristine, and prednisone) be continued [22].

In contrast, cases of lung, colorectal, gastric, and esophageal cancer decreased substantially. These results might be related to the route of infection of COVID-19. The basic infection route of COVID-19 is considered to be droplets and contacts infection [23]. Also, there are concerns about the possibility of aerosol transmission, which may have led to a substantial reduction in the number of hospitalized patients with these types of cancer [24]. Bronchoscopy and gastrointestinal endoscopy play important roles in the diagnosis of these carcinomas. However, concerns about aerosolized and fecal transmission to health care workers caused academic societies to recommend that nonurgent testing be considered for postponement [25-28]. Therefore, unlike for other types of cancer, a decrease in the number of hospitalized patients diagnosed with lung, colorectal, gastric, or esophageal cancer might indicate a decrease in the number of examinations for diagnosis rather than a delay in treatments for diagnosed patients.

This hypothesis can be inferred from Table3, which shows a similar decrease in the number of admissions with surgery or chemotherapy despite the fact that delaying treatment such as surgery and chemotherapy is not recommended. The number of cases with surgery or chemotherapy for other types of cancer did not considerably decrease. For breast cancer cases, total admissions cases were reduced by more than 10%. The number of cases with chemotherapy was also reduced by 10%, while the number of cases with surgery was reduced by less than 10%. In this regard, it is possible that the chemotherapy regimen was changed to oral drug, or the dosing interval was extended, as described in the ESMO guidelines, which may have contributed to a reduction in the overall number of hospital admissions [5]. Uterine cancer cases showed a similar trend, with the ESMO guidelines regarding second-line chemotherapy as a low priority, which might explain the decline in the number of chemotherapy cases [5].

This study had several limitations. We evaluated the impact of COVID-19 on cancer care for inpatients, but not for outpatient. Events related to outpatient cancer treatment include postponing outpatient testing if they were suspected of having cancer or postponing chemotherapy in outpatients. Because chemotherapy is often administered as an outpatient procedure, it is unclear how outpatients with cancer were affected. It is also unclear how a decrease in the number of hospitalized patients is associated with cancer outcomes. In fact, the decline in the number of admission cases treated with surgery or chemotherapy was small except for some types of cancer patients, so it might have little impact on long-term prognosis. The long-term prognosis should be carefully monitored. In addition, due to the characteristics of DPC data, the number of patients who were admitted in June decreased significantly in both 2019 and 2020. Many hospitalized patients in June may still have been admitted; therefore, no DPC data

are not generated without discharge, making it difficult to assess the impact of the COVID-19 pandemic in June 2020.

In conclusion, our study indicated the COVID-19 outbreak might cause a decrease in the number of admission cases with cancer, and cases that received treatments such as surgery or chemotherapy were not largely affected except for some types of cancer.

### **Author contributions**

Conceptualization: All authors

Methodology: HI, YA, DT and TM

Software: HI, JS, DT, and TM

Validation: All authors

Formal analysis: HI, YA, and JS

Investigation: All authors

Resources: SK and YI

Data Curation: JS, and SK

Writing – original draft preparation: HI

Writing – review and editing: All authors

Visualization: HI

Supervision: YI

Project administration: YI

Funding acquisition: YI

### **Declaration of interests**

All authors declare no competing interests.

### **Data sharing**

The datasets generated during and/or analyzed during the present study are available from the corresponding author on reasonable request.

### **Acknowledgments**

The present study was supported by JSPS KAKENHI Grant numbers JP19H01075 from the Japan Society for the Promotion of Science, Health Labour Sciences Research Grants from the Ministry of Health, Labour and Welfare, Japan, Grant Numbers 20HA2003 and by GAP Fund Program of Kyoto University, Type B (2020) to Yuichi Imanaka.

### **REFERENCES**

1. World Health Organization. Coronavirus Disease (COVID-19) Dashboard. Available at: <https://covid19.who.int/>. Accessed September 22, 2020.
2. Bchetnia M, Girard C, Duchaine C, Laprise C. The outbreak of the novel severe acute respiratory syndrome coronavirus 2 (SARS-CoV-2): A review of the current global status [published online ahead of print, 2020 Aug 4]. *J Infect Public Health*. 2020;S1876-0341(20)30591-8. doi:10.1016/j.jiph.2020.07.011

3. National Health Commission & State Administration of Traditional Chinese Medicine.  
Novel Coronavirus Treatment Guidelines – 7th Edition.  
<https://exploreim.ucla.edu/covid19/chinas-national-health-commission-guidelines-for-covid-19-treatment-2-2/>. Published March 3, 2020. Accessed September 22, 2020.
4. American Society of Clinical Oncology. A Guide to Cancer Care Delivery During the COVID-19. <https://www.asco.org/practice-policy/policy-issues-statements/asco-in-action/covid-19-guidance-seven-translations>. Published May 19, 2020. Accessed September 22, 2020.
5. European Society for Medical Oncology. CANCER PATIENT MANAGEMENT DURING THE COVID-19 PANDEMIC. <https://www.esmo.org/guidelines/cancer-patient-management-during-the-covid-19-pandemic>. Published 2020. Accessed September 22, 2020.
6. Japanese Society of Medical Oncology and Japanese Society of Clinical Oncology. Chemotherapy and other drug therapies for older patients with cancer: JSMO-JSCO clinical practice guidelines. <https://www.jsmo.or.jp/about/guideline01.html>. Published September 1, 2020. Accessed September 22, 2020.
7. Declaration of a State of Emergency in response to the Novel Coronavirus Disease. [https://japan.kantei.go.jp/ongoingtopics/\\_00018.html](https://japan.kantei.go.jp/ongoingtopics/_00018.html). Published April 7, 2020. Accessed September 22, 2020.
8. Ministry of Health, Labour and Welfare. Distribution of Medical Supplies and Emergency Response by Medical Institutions. <https://www.mhlw.go.jp/content/10807000/000625111.pdf>. Published April 24, 2020. Accessed September 22, 2020. Japanese.



9. Japan Surgical Society. The recommendations for surgery in patients with positive or suspected new coronavirus (revised edition).  
<https://www.jssoc.or.jp/aboutus/coronavirus/info20200402.html>. Published April 1, 2020.  
Accessed September 22, 2020. Japanese.
10. Japan Gastroenterological Endoscopy Society. The recommendations for endoscopic treatment for a new coronavirus infection (COVID -19).  
[https://www.jges.net/medical/covid-19-proposal\\_20200406](https://www.jges.net/medical/covid-19-proposal_20200406). Published April 6, 2020.  
Accessed September 22, 2020. Japanese.
11. PelvEx Collaborative. The impact of the COVID-19 pandemic on the Management of Locally Advanced Primary/Recurrent Rectal Cancer [published online ahead of print, 2020 Aug 10]. *Br J Surg*. 2020;10.1002/bjs.11893. doi:10.1002/bjs.11893
12. Kaufman HW, Chen Z, Niles J, Fesko Y. Changes in the Number of US Patients With Newly Identified Cancer Before and During the Coronavirus Disease 2019 (COVID-19) Pandemic. *JAMA Netw Open*. 2020;3(8):e2017267. Published 2020 Aug 3.  
doi:10.1001/jamanetworkopen.2020.17267
13. Shin JH, Kunisawa S, Imanaka Y. New outcome-specific comorbidity scores excelled in predicting in-hospital mortality and healthcare charges in administrative databases. *J Clin Epidemiol*. 2020;126:141-153. doi:10.1016/j.jclinepi.2020.06.011
14. Ministry of Health, Labour and Welfare. [Reports of a survey, “Discharged Patients Survey,” for assessing the effects of introducing DPC, 2018.]  
[https://www.mhlw.go.jp/stf/shingi2/0000196043\\_00003.html](https://www.mhlw.go.jp/stf/shingi2/0000196043_00003.html). Published March 25, 2020.  
Accessed September 22, 2020. Japanese.

15. Ministry of Health, Labour and Welfare. [Dynamic Survey of Medical Institutions and Hospital Report, 2018.]  
<https://www.mhlw.go.jp/toukei/saikin/hw/iryosd/m18/is1802.html>. Published May 29, 2018. Accessed September 22, 2020. Japanese.
16. World Health Organization. International Agency for Research on Cancer.  
<https://gco.iarc.fr/today/data/factsheets/populations/392-japan-fact-sheets.pdf>. Published May, 2019. Accessed September 22, 2020.
17. Bernal JL, Cummins S, Gasparrini A. Interrupted time series regression for the evaluation of public health interventions: a tutorial. *Int J Epidemiol*. 2017;46(1):348-355.  
doi:10.1093/ije/dyw098
18. Kontopantelis E, Doran T, Springate DA, Buchan I, Reeves D. Regression based quasi-experimental approach when randomisation is not an option: interrupted time series analysis. *BMJ*. 2015;350:h2750. Published 2015 Jun 9. doi:10.1136/bmj.h2750
19. Fligor SC, Wang S, Allar BG, et al. Gastrointestinal Malignancies and the COVID-19 Pandemic: Evidence-Based Triage to Surgery. *J Gastrointest Surg*. 2020;24(10):2357-2373. doi:10.1007/s11605-020-04712-5
20. Furukawa H, Iwata R, Moriyama N. Growth rate of pancreatic adenocarcinoma: initial clinical experience. *Pancreas*. 2001;22(4):366-369. doi:10.1097/00006676-200105000-00005
21. Wade TP, Comitalo JB, Andrus CH, Goodwin MN Jr, Kaminski DL. Laparoscopic cancer surgery. Lessons from gallbladder cancer. *Surg Endosc*. 1994;8(6):698-701.  
doi:10.1007/BF00678571.

22. American Society of Hematology. COVID-19 and Aggressive Lymphoma: Frequently Asked Questions. Available at: <https://www.hematology.org/covid-19/covid-19-and-aggressive-lymphoma>. Accessed September 26, 2020.
23. Yu IT, Li Y, Wong TW, et al. Evidence of airborne transmission of the severe acute respiratory syndrome virus. *N Engl J Med*. 2004;350(17):1731-1739.  
doi:10.1056/NEJMoa032867
24. Wang J, Du G. COVID-19 may transmit through aerosol [published online ahead of print, 2020 Mar 24]. *Ir J Med Sci*. 2020;1-2. doi:10.1007/s11845-020-02218-2
25. Gu J, Han B, Wang J. COVID-19: Gastrointestinal Manifestations and Potential Fecal-Oral Transmission. *Gastroenterology*. 2020;158(6):1518-1519.  
doi:10.1053/j.gastro.2020.02.054
26. The Japan Society for Respiratory Endoscopy. Warnings in Bronchoscopy for COVID - 19 and Suspected Cases. [http://www.jsre.org/info/2003\\_covid19\\_2.pdf](http://www.jsre.org/info/2003_covid19_2.pdf). Published March 3, 2020. Accessed September 26, 2020. Japanese.
27. Japan Gastroenterological Endoscopy Society. Recommendations for Gastrointestinal endoscopy in a new coronavirus infection (COVID -19) pandemic, Second revised edition. [https://www.jges.net/medical/covid-19-proposal\\_20200406#\\_edn4](https://www.jges.net/medical/covid-19-proposal_20200406#_edn4). Published April 6, 2020. Accessed September 26, 2020. Japanese.
28. Irisawa A, Furuta T, Matsumoto T, et al. Gastrointestinal endoscopy in the era of the acute pandemic of coronavirus disease 2019: Recommendations by Japan Gastroenterological Endoscopy Society (Issued on April 9th, 2020). [published online ahead of print, 2020 Apr 26]. *Dig Endosc*. 2020;10.1111/den.13703.  
doi:10.1111/den.13703

## TABLES

**Table1. Baseline characteristics of study population**

Characteristic	Overall (n = 403,344)	
<b>Age</b>		
Median (IQR)	72	(65, 78)
<b>Age category</b>		
75 years ≥	161,499	40.0%
65 – 74 years	145,631	36.1%
64 years ≤	96,214	23.9%
<b>Sex</b>		
Males	239,345	59.3%
Females	163,999	40.7%
<b>Primary legion</b>		
Colon/rectum	82,541	20.5%
Lung	70,455	17.5%
Stomach	49,504	12.3%
Breast	32,662	8.1%
Bladder & Urinary tract	32,186	8.0%
Pancreas	25,948	6.4%
Non-Hodgkin lymphoma	25,273	6.3%
Liver	25,588	6.3%
Prostate	16,045	4.0%
Esophagus	15,668	3.9%
Uterus	14,618	3.6%
Gallbladder & Biliary tract	12,856	3.2%
<b>Primary/Recurrent</b>		
Primary	290,968	72.1%
Recurrent	101,501	25.2%
Unknown	10,875	2.7%
<b>Purpose of admission</b>		
Special purpose	392,105	97.2%
Examination	11,239	2.8%
<b>Anti-cancer treatment</b>		
Any radical surgery	135,815	33.7%
Any chemotherapy	146,977	36.4%
Length of hospital stay, median (IQR)	9.0	(4.0, 16.0)
In-hospital mortality	35,015	8.7%

Abbreviations: IQR: Interquartile Range

**Table2. Number of admission cases per month for each cancer diagnosis**

	Jul	Aug	Sep	Oct	Nov	Dec	Jan	Feb	Mar	Apr	May	Jun
<b>All Cancers</b>												
July 2018 – June 2019	22,659	22,244	20,061	22,989	21,422	19,175	22,432	20,085	20,667	20,711	20,129	13,711
July 2019 – June 2020	23,651	21,251	21,583	22,527	20,718	20,383	22,895	20,253	21,912	20,113	17,689	13,486
year-on-year (%)	104.38	95.54	107.59	97.99	96.71	106.30	102.06	100.84	106.02	97.11	87.88	98.36
<b>Overall study population</b>												
July 2018 – June 2019	18,521	18,061	16,385	18,716	17,470	15,717	18,484	16,483	16,912	16,998	16,516	11,472
July 2019 – June 2020	19,286	17,324	17,643	18,428	16,979	16,624	18,631	16,590	18,061	16,388	14,474	11,181
year-on-year (%)	104.13	95.92	107.68	98.46	97.19	105.77	100.80	100.65	106.79	96.41	87.64	97.46
<b>Colorectal Cancer</b>												
<b>All</b>												
July 2018 – June 2019	3,666	3,626	3,296	3,686	3,541	3,193	3,675	3,332	3,469	3,461	3,436	2,313
July 2019 – June 2020	3,897	3,539	3,644	3,745	3,567	3,515	3,736	3,598	3,755	3,452	2,999	2,400
year-on-year (%)	106.30	97.60	110.56	101.60	100.73	110.08	101.66	107.98	108.24	99.74	87.28	103.76
<b>Proportion of All Colorectal Cancer to All Cancers</b>												
July 2018 – June 2019	0.16	0.16	0.16	0.16	0.17	0.17	0.16	0.17	0.17	0.17	0.17	0.17
July 2019 – June 2020	0.16	0.17	0.17	0.17	0.17	0.17	0.16	0.18	0.17	0.17	0.17	0.18
Ratio of proportion*	1.02	1.02	1.03	1.04	1.04	1.04	1.00	1.07	1.02	1.03	0.99	1.05
<b>Lung Cancer</b>												
<b>All</b>												
July 2018 – June 2019	3,320	3,222	2,897	3,426	3,165	2,793	3,282	2,940	2,920	3,018	2,832	1,907
July 2019 – June 2020	3,381	3,025	3,070	3,159	2,905	2,877	3,310	2,782	3,128	2,767	2,488	1,841
year-on-year (%)	101.84	93.89	105.97	92.21	91.79	103.01	100.85	94.63	107.12	91.68	87.85	96.54
<b>Proportion of All Lung Cancer to All Cancers</b>												
July 2018 – June 2019	0.15	0.14	0.14	0.15	0.15	0.15	0.15	0.15	0.14	0.15	0.14	0.14
July 2019 – June 2020	0.14	0.14	0.14	0.14	0.14	0.14	0.14	0.14	0.14	0.14	0.14	0.14

Ratio of proportion	0.98	0.98	0.98	0.94	0.95	0.97	0.99	0.94	1.01	0.94	1.00	0.98
<b>Gastric Cancer</b>												
<b>All</b>												
July 2018 – June 2019	2,323	2,213	2,081	2,409	2,222	1,995	2,376	2,111	2,125	2,083	2,071	1,372
July 2019 – June 2020	2,422	2,174	2,197	2,267	2,048	2,034	2,274	1,899	2,188	1,909	1,576	1,135
year-on-year (%)	104.26	98.24	105.57	94.11	92.17	101.95	95.71	89.96	102.96	91.65	76.10	82.73
<b>Proportion of All Gastric Cancer to All Cancers</b>												
July 2018 – June 2019	0.10	0.10	0.10	0.10	0.10	0.10	0.11	0.11	0.10	0.10	0.10	0.10
July 2019 – June 2020	0.10	0.10	0.10	0.10	0.10	0.10	0.10	0.09	0.10	0.09	0.09	0.08
Ratio of proportion	1.00	1.03	0.98	0.96	0.95	0.96	0.94	0.89	0.97	0.94	0.87	0.84
<b>Breast Cancer</b>												
<b>All</b>												
July 2018 – June 2019	1,436	1,421	1,366	1,550	1,481	1,332	1,498	1,301	1,315	1,428	1,316	1,088
July 2019 – June 2020	1,425	1,288	1,338	1,516	1,452	1,396	1,469	1,372	1,459	1,292	1,126	997
year-on-year (%)	99.23	90.64	97.95	97.81	98.04	104.80	98.06	105.46	110.95	90.48	85.56	91.64
<b>Proportion of All Breast Cancer to All Cancers</b>												
July 2018 – June 2019	0.06	0.06	0.07	0.07	0.07	0.07	0.07	0.06	0.06	0.07	0.07	0.08
July 2019 – June 2020	0.06	0.06	0.06	0.07	0.07	0.07	0.06	0.07	0.07	0.06	0.06	0.07
Ratio of proportion	0.95	0.95	0.91	1.00	1.01	0.99	0.96	1.05	1.05	0.93	0.97	0.93
<b>Bladder &amp; Urinary tract Cancer</b>												
<b>All</b>												
July 2018 – June 2019	1,470	1,446	1,236	1,458	1,287	1,194	1,419	1,300	1,391	1,357	1,356	1,122
July 2019 – June 2020	1,526	1,320	1,340	1,394	1,311	1,303	1,481	1,295	1,491	1,359	1,234	1,096
year-on-year (%)	103.81	91.29	108.41	95.61	101.86	109.13	104.37	99.62	107.19	100.15	91.00	97.68
<b>Proportion of All Bladder &amp; Urinary tract Cancer to All Cancers</b>												
July 2018 – June 2019	0.06	0.07	0.06	0.06	0.06	0.06	0.06	0.06	0.07	0.07	0.07	0.08
July 2019 – June 2020	0.06	0.06	0.06	0.06	0.06	0.06	0.06	0.06	0.07	0.07	0.07	0.08

Ratio of proportion	0.99	0.96	1.01	0.98	1.05	1.03	1.02	0.99	1.01	1.03	1.04	0.99
<b>Pancreas Cancer</b>												
<b>All</b>												
July 2018 – June 2019	1,179	1,168	991	1,158	1,115	1,036	1,161	1,047	1,068	1,122	1,044	659
July 2019 – June 2020	1,235	1,147	1,160	1,228	1,072	1,094	1,244	1,016	1,199	1,070	985	750
year-on-year (%)	104.75	98.20	117.05	106.04	96.14	105.60	107.15	97.04	112.27	95.37	94.35	113.81
<b>Proportion of All Pancreas Cancer to All Cancers</b>												
July 2018 – June 2019	0.05	0.05	0.05	0.05	0.05	0.05	0.05	0.05	0.05	0.05	0.05	0.05
July 2019 – June 2020	0.05	0.05	0.05	0.05	0.05	0.05	0.05	0.05	0.05	0.05	0.06	0.06
Ratio of proportion	1.00	1.03	1.09	1.08	0.99	0.99	1.05	0.96	1.06	0.98	1.07	1.16
<b>Non-Hodgkin Lymphoma</b>												
<b>All</b>												
July 2018 – June 2019	1,143	1,071	976	1,119	995	891	1,113	924	946	1,065	1,001	544
July 2019 – June 2020	1,280	1,168	1,202	1,288	1,170	1,102	1,232	1,102	1,201	1,132	975	633
year-on-year (%)	111.99	109.06	123.16	115.10	117.59	123.68	110.69	119.26	126.96	106.29	97.40	116.36
<b>Proportion of All Non-Hodgkin Lymphoma to All Cancers</b>												
July 2018 – June 2019	0.05	0.05	0.05	0.05	0.05	0.05	0.05	0.05	0.05	0.05	0.05	0.04
July 2019 – June 2020	0.05	0.05	0.06	0.06	0.06	0.05	0.05	0.05	0.05	0.06	0.06	0.05
Ratio of proportion	1.07	1.14	1.14	1.17	1.22	1.16	1.08	1.18	1.20	1.09	1.11	1.18
<b>Liver cancer</b>												
<b>All</b>												
July 2018 – June 2019	1,250	1,182	1,165	1,245	1,182	1,007	1,189	1,109	1,143	1,080	1,064	743
July 2019 – June 2020	1,181	1,059	1,110	1,117	1,047	931	1,099	1,033	1,034	1,009	879	730
year-on-year (%)	94.48	89.59	95.28	89.72	88.58	92.45	92.43	93.15	90.46	93.43	82.61	98.25
<b>Proportion of All Liver cancer to All Cancers</b>												
July 2018 – June 2019	0.06	0.05	0.06	0.05	0.06	0.05	0.05	0.06	0.06	0.05	0.05	0.05
July 2019 – June 2020	0.05	0.05	0.05	0.05	0.05	0.05	0.05	0.05	0.05	0.05	0.05	0.05
Ratio of proportion	0.91	0.94	0.89	0.92	0.92	0.87	0.91	0.92	0.85	0.96	0.94	1.00

**Prostate Cancer****All**

July 2018 – June 2019	695	701	597	719	637	631	725	669	693	624	643	506
July 2019 – June 2020	771	678	710	730	669	652	799	712	760	646	599	479
year-on-year (%)	110.94	96.72	118.93	101.53	105.02	103.33	110.21	106.43	109.67	103.53	93.16	94.66

**Proportion of All Prostate Cancer to All Cancers**

July 2018 – June 2019	0.03	0.03	0.03	0.03	0.03	0.03	0.03	0.03	0.03	0.03	0.03	0.04
July 2019 – June 2020	0.03	0.03	0.03	0.03	0.03	0.03	0.03	0.04	0.03	0.03	0.03	0.04
Ratio of proportion	1.06	1.01	1.11	1.04	1.09	0.97	1.08	1.06	1.03	1.07	1.06	0.96

**Esophageal cancer****All**

July 2018 – June 2019	787	735	661	718	670	570	771	711	655	684	627	413
July 2019 – June 2020	769	706	676	710	616	627	741	669	643	583	562	364
year-on-year (%)	97.71	96.05	102.27	98.89	91.94	110.00	96.11	94.09	98.17	85.23	89.63	88.14

**Proportion of All Esophageal Cancer to All Cancers**

July 2018 – June 2019	0.03	0.03	0.03	0.03	0.03	0.03	0.03	0.04	0.03	0.03	0.03	0.03
July 2019 – June 2020	0.03	0.03	0.03	0.03	0.03	0.03	0.03	0.03	0.03	0.03	0.03	0.03
Ratio of proportion	0.94	1.01	0.95	1.01	0.95	1.03	0.94	0.93	0.93	0.88	1.02	0.90

**Uterine Cancer****All**

July 2018 – June 2019	668	653	595	655	614	516	673	581	590	583	616	493
July 2019 – June 2020	757	673	610	691	603	547	647	572	654	631	535	461
year-on-year (%)	113.32	103.06	102.52	105.50	98.21	106.01	96.14	98.45	110.85	108.23	86.85	93.51

**Proportion of All Uterine Cancer to All Cancers**

July 2018 – June 2019	0.03	0.03	0.03	0.03	0.03	0.03	0.03	0.03	0.03	0.03	0.03	0.04
July 2019 – June 2020	0.03	0.03	0.03	0.03	0.03	0.03	0.03	0.03	0.03	0.03	0.03	0.03
Ratio of proportion	1.09	1.08	0.95	1.08	1.02	1.00	0.94	0.98	1.05	1.11	0.99	0.95

**Gallbladder & Biliary tract**



<b>Cancer</b>												
<b>All</b>												
July 2018 – June 2019	584	623	524	573	561	559	602	458	597	493	510	312
July 2019 – June 2020	642	547	586	583	519	546	599	540	549	538	516	295
year-on-year (%)	109.93	87.80	111.83	101.75	92.51	97.67	99.50	117.90	91.96	109.13	101.18	94.55
<b>Proportion of Gallbladder &amp; Biliary tract Cancer to All Cancers</b>												
July 2018 – June 2019	0.03	0.03	0.03	0.02	0.03	0.03	0.03	0.02	0.03	0.02	0.03	0.02
July 2019 – June 2020	0.03	0.03	0.03	0.03	0.03	0.03	0.03	0.03	0.03	0.03	0.03	0.02
Ratio of proportion	1.05	0.92	1.04	1.04	0.96	0.92	0.97	1.17	0.87	1.12	1.15	0.96

\* The ratio of proportions = proportion of admission cases [2019/07-2020/06] / proportion of admission cases [2018/07-2019/06]

where

proportion of admission cases [2019/7-2020/6] = number of admission cases with each diagnosis of cancer per month between July 2019 and June 2020 / number of admission cases with all cancers per month between July 2019 and June 2020

and where

proportion of admission cases [2018/7-2019/6] = number of admission cases with each diagnosis of cancer per month between July 2018 and June 2019 / number of admission cases with all cancers per month between July 2018 and June 2019.

**Table3. Number of monthly admission cases for each treatment for each cancer diagnosis**

	Jul	Aug	Sep	Oct	Nov	Dec	Jan	Feb	Mar	Apr	May	Jun
<b>Colorectal Cancer</b>												
<b>All</b>												
July 2018 – June 2019	3,666	3,626	3,296	3,686	3,541	3,193	3,675	3,332	3,469	3,461	3,436	2,313
July 2019 – June 2020	3,897	3,539	3,644	3,745	3,567	3,515	3,736	3,598	3,755	3,452	2,999	2,400
year-on-year (%)	106.30	97.60	110.56	101.60	100.73	110.08	101.66	107.98	108.24	99.74	87.28	103.76
<b>Surgery</b>												
July 2018 – June 2019	1,200	1,097	1,038	1,183	1,178	978	1,217	1,049	1,130	1,092	1,067	486
July 2019 – June 2020	1,197	1,140	1,182	1,213	1,143	1,062	1,177	1,127	1,234	1,129	907	481
year-on-year (%)	99.75	103.92	113.87	102.54	97.03	108.59	96.71	107.44	109.20	103.39	85.00	98.97
<b>Endoscopic resection</b>												
July 2018 – June 2019	189	189	163	184	197	185	223	211	198	189	185	191
July 2019 – June 2020	248	207	231	240	222	227	232	237	264	263	187	193
year-on-year (%)	131.22	109.52	141.72	130.43	112.69	122.70	104.04	112.32	133.33	139.15	101.08	101.05
<b>Chemotherapy</b>												
July 2018 – June 2019	1,198	1,191	1,051	1,172	1,080	978	1,199	1,040	1,054	1,111	1,139	991
July 2019 – June 2020	1,260	1,113	1,085	1,203	1,118	1,108	1,250	1,159	1,197	1,187	1,079	995
year-on-year (%)	105.18	93.45	103.24	102.65	103.52	113.29	104.25	111.44	113.57	106.84	94.73	100.40
<b>Lung Cancer</b>												
<b>All</b>												
July 2018 – June 2019	3,320	3,222	2,897	3,426	3,165	2,793	3,282	2,940	2,920	3,018	2,832	1,907

July 2019 – June 2020	3,379	3,025	3,070	3,159	2,905	2,877	3,310	2,782	3,128	2,767	2,488	1,841
year-on-year (%)	101.78	93.89	105.97	92.21	91.79	103.01	100.85	94.63	107.12	91.68	87.85	96.54
<b>Surgery</b>												
July 2018 – June 2019	447	455	421	490	477	418	489	480	415	438	409	342
July 2019 – June 2020	484	413	462	471	455	438	517	435	457	403	364	262
year-on-year (%)	108.28	90.77	109.74	96.12	95.39	104.78	105.73	90.63	110.12	92.01	89.00	76.61
<b>Chemotherapy</b>												
July 2018 – June 2019	1,696	1,653	1,479	1,820	1,654	1,429	1,753	1,536	1,539	1,583	1,543	966
July 2019 – June 2020	1,776	1,529	1,560	1,614	1,453	1,394	1,754	1,453	1,652	1,490	1,288	989
year-on-year (%)	104.72	92.50	105.48	88.68	87.85	97.55	100.06	94.60	107.34	94.13	83.47	102.38
<hr/> <b>Gastric Cancer</b>												
<b>All</b>												
July 2018 – June 2019	2,323	2,213	2,081	2,409	2,222	1,995	2,376	2,111	2,125	2,083	2,069	1,372
July 2019 – June 2020	2,422	2,174	2,197	2,267	2,048	2,034	2,274	1,899	2,188	1,909	1,576	1,135
year-on-year (%)	104.26	98.24	105.57	94.11	92.17	101.95	95.71	89.96	102.96	91.65	76.17	82.73
<b>Surgery</b>												
July 2018 – June 2019	496	480	449	556	463	414	532	448	450	400	398	200
July 2019 – June 2020	510	481	466	497	459	433	466	399	455	417	334	147
year-on-year (%)	102.82	100.21	103.79	89.39	99.14	104.59	87.59	89.06	101.11	104.25	83.92	73.50
<b>Endoscopic resection</b>												
July 2018 – June 2019	621	542	531	608	602	501	599	524	533	535	525	440
July 2019 – June 2020	710	576	595	610	554	581	656	545	690	514	385	345

year-on-year (%)	114.33	106.27	112.05	100.33	92.03	115.97	109.52	104.01	129.46	96.07	73.33	78.41
<b>Chemotherapy</b>												
July 2018 – June 2019	513	541	463	556	504	445	591	498	531	537	505	381
July 2019 – June 2020	523	446	448	468	407	377	511	399	416	398	343	282
year-on-year (%)	101.95	82.44	96.76	84.17	80.75	84.72	86.46	80.12	78.34	74.12	67.92	74.02
<b>Breast Cancer</b>												
<b>All</b>												
July 2018 – June 2019	1,436	1,421	1,366	1,550	1,481	1,332	1,498	1,301	1,315	1,428	1,316	1,088
July 2019 – June 2020	1,425	1,288	1,338	1,516	1,452	1,396	1,469	1,372	1,459	1,292	1,126	997
year-on-year (%)	99.23	90.64	97.95	97.81	98.04	104.80	98.06	105.46	110.95	90.48	85.56	91.64
<b>Surgery</b>												
July 2018 – June 2019	831	789	807	946	819	787	833	727	746	830	727	649
July 2019 – June 2020	828	744	794	931	874	847	840	795	902	815	675	582
year-on-year (%)	99.64	94.30	98.39	98.41	106.72	107.62	100.84	109.35	120.91	98.19	92.85	89.68
<b>Chemotherapy</b>												
July 2018 – June 2019	404	372	362	389	398	324	426	376	352	358	387	295
July 2019 – June 2020	364	318	333	367	370	334	410	328	336	317	285	288
year-on-year (%)	90.10	85.48	91.99	94.34	92.96	103.09	96.24	87.23	95.45	88.55	73.64	97.63
<b>Bladder &amp; Urinary tract Cancer</b>												
<b>All</b>												
July 2018 – June 2019	1,470	1,446	1,236	1,458	1,287	1,194	1,419	1,300	1,391	1,357	1,356	1,122
July 2019 – June 2020	1,526	1,320	1,340	1,394	1,311	1,303	1,481	1,295	1,491	1,359	1,234	1,096

year-on-year (%)	103.81	91.29	108.41	95.61	101.86	109.13	104.37	99.62	107.19	100.15	91.00	97.68
<b>Surgery</b>												
July 2018 – June 2019	45	48	48	49	46	37	50	39	58	37	41	3
July 2019 – June 2020	51	42	35	56	44	23	55	36	55	38	49	8
year-on-year (%)	113.33	87.50	72.92	114.29	95.65	62.16	110.00	92.31	94.83	102.70	119.51	266.67
<b>TUR-BT</b>												
July 2018 – June 2019	908	931	778	936	818	767	877	841	853	865	851	798
July 2019 – June 2020	954	827	841	878	807	882	916	840	965	895	737	762
year-on-year (%)	105.07	88.83	108.10	93.80	98.66	114.99	104.45	99.88	113.13	103.47	86.60	95.49
<b>Chemotherapy</b>												
July 2018 – June 2019	451	465	382	447	410	358	491	435	450	457	439	354
July 2019 – June 2020	527	404	460	487	397	386	504	430	439	447	416	353
year-on-year (%)	116.85	86.88	120.42	108.95	96.83	107.82	102.65	98.85	97.56	97.81	94.76	99.72
<b>Pancreas Cancer</b>												
<b>All</b>												
July 2018 – June 2019	1,179	1,168	991	1,158	1,115	1,036	1,161	1,047	1,068	1,122	1,044	659
July 2019 – June 2020	1,235	1,147	1,160	1,228	1,072	1,094	1,244	1,016	1,199	1,070	985	750
year-on-year (%)	104.75	98.20	117.05	106.04	96.14	105.60	107.15	97.04	112.27	95.37	94.35	113.81
<b>Surgery</b>												
July 2018 – June 2019	97	122	91	87	118	89	101	112	103	88	87	21
July 2019 – June 2020	122	104	100	113	98	80	141	92	120	116	90	28
year-on-year (%)	125.77	85.25	109.89	129.89	83.05	89.89	139.60	82.14	116.50	131.82	103.45	133.33

**Chemotherapy**

July 2018 – June 2019	395	363	351	433	399	329	417	355	373	369	366	267
July 2019 – June 2020	415	371	365	422	393	329	436	358	413	360	352	308
year-on-year (%)	105.06	102.20	103.99	97.46	98.50	100.00	104.56	100.85	110.72	97.56	96.17	115.36

**Non-Hodgkin  
Lymphoma****All**

July 2018 – June 2019	1,143	1,071	976	1,119	995	891	1,113	924	946	1,065	1,001	544
July 2019 – June 2020	1,280	1,168	1,202	1,288	1,170	1,102	1,232	1,102	1,201	1,132	975	633
year-on-year (%)	111.99	109.06	123.16	115.10	117.59	123.68	110.69	119.26	126.96	106.29	97.40	116.36

**Chemotherapy**

July 2018 – June 2019	886	815	768	902	793	691	876	742	744	839	790	409
July 2019 – June 2020	1,029	931	975	1,029	942	867	1,004	891	963	924	768	516
year-on-year (%)	116.14	114.23	126.95	114.08	118.79	125.47	114.61	120.08	129.44	110.13	97.22	126.16

**Liver Cancer****All**

July 2018 – June 2019	1,250	1,182	1,165	1,245	1,182	1,007	1,189	1,109	1,143	1,080	1,064	743
July 2019 – June 2020	1,181	1,059	1,110	1,117	1,047	931	1,099	1,033	1,034	1,009	879	730
year-on-year (%)	94.48	89.59	95.28	89.72	88.58	92.45	92.43	93.15	90.46	93.43	82.61	98.25

**Surgery**

July 2018 – June 2019	113	122	116	130	96	78	121	115	110	90	111	47
July 2019 – June 2020	114	135	124	113	135	95	113	115	108	103	103	56
year-on-year (%)	100.88	110.66	106.90	86.92	140.63	121.79	93.39	100.00	98.18	114.44	92.79	119.15

**Chemotherapy**

July 2018 – June 2019	165	163	132	162	152	145	183	155	168	161	144	98
July 2019 – June 2020	165	131	182	163	140	131	154	136	128	141	147	109
year-on-year (%)	100.00	80.37	137.88	100.62	92.11	90.34	84.15	87.74	76.19	87.58	102.08	111.22

**RFA**

July 2018 – June 2019	168	148	148	183	153	134	141	157	138	147	144	127
July 2019 – June 2020	177	142	172	151	135	110	139	130	155	133	117	121
year-on-year (%)	105.36	95.95	116.22	82.51	88.24	82.09	98.58	82.80	112.32	90.48	81.25	95.28

**TACE**

July 2018 – June 2019	416	358	414	380	380	285	351	355	338	318	322	256
July 2019 – June 2020	360	286	310	332	306	244	335	323	307	312	242	251
year-on-year (%)	86.54	79.89	74.88	87.37	80.53	85.61	95.44	90.99	90.83	98.11	75.16	98.05

**Prostate Cancer****All**

July 2018 – June 2019	695	701	597	719	637	631	725	669	693	624	643	506
July 2019 – June 2020	771	678	710	730	669	652	799	712	760	646	599	479
year-on-year (%)	110.94	96.72	118.93	101.53	105.02	103.33	110.21	106.43	109.67	103.53	93.16	94.66

**Surgery**

July 2018 – June 2019	247	238	195	241	206	214	266	245	260	192	229	190
July 2019 – June 2020	270	227	265	254	241	238	292	283	294	265	259	189
year-on-year (%)	109.31	95.38	135.90	105.39	116.99	111.21	109.77	115.51	113.08	138.02	113.10	99.47

**TUR-P**

July 2018 – June 2019	301	268	241	359	315	253	318	288	292	245	258	215
July 2019 – June 2020	327	284	268	271	289	263	303	286	294	226	168	176
year-on-year (%)	108.64	105.97	111.20	75.49	91.75	103.95	95.28	99.31	100.68	92.24	65.12	81.86
<b>Chemotherapy</b>												
July 2018 – June 2019	174	160	158	200	165	148	181	175	178	174	153	107
July 2019 – June 2020	200	161	176	167	163	144	211	145	195	159	144	108
year-on-year (%)	114.94	100.63	111.39	83.50	98.79	97.30	116.57	82.86	109.55	91.38	94.12	100.93
<b>Esophageal Cancer</b>												
<b>All</b>												
July 2018 – June 2019	787	735	661	718	670	570	771	711	655	684	627	413
July 2019 – June 2020	769	706	676	710	616	627	741	669	643	583	562	364
year-on-year (%)	97.71	96.05	102.27	98.89	91.94	110.00	96.11	94.09	98.17	85.23	89.63	88.14
<b>Surgery</b>												
July 2018 – June 2019	51	57	57	45	39	40	60	47	56	34	41	4
July 2019 – June 2020	41	49	51	47	37	36	51	53	49	36	32	8
year-on-year (%)	80.39	85.96	89.47	104.44	94.87	90.00	85.00	112.77	87.50	105.88	78.05	200.00
<b>Endoscopic resection</b>												
July 2018 – June 2019	124	105	108	117	103	96	116	108	84	117	84	78
July 2019 – June 2020	126	111	111	117	94	102	126	119	111	104	90	60
year-on-year (%)	101.61	105.71	102.78	100.00	91.26	106.25	108.62	110.19	132.14	88.89	107.14	76.92
<b>Chemotherapy</b>												
July 2018 – June 2019	367	303	281	320	297	232	351	336	299	307	302	211



July 2019 – June 2020	346	304	301	321	291	273	343	284	277	265	274	185
year-on-year (%)	94.28	100.33	107.12	100.31	97.98	117.67	97.72	84.52	92.64	86.32	90.73	87.68
<b>Uterine Cancer</b>												
<b>All</b>												
July 2018 – June 2019	668	653	595	655	614	516	673	581	590	583	616	493
July 2019 – June 2020	757	673	610	691	603	547	647	572	654	631	535	461
year-on-year (%)	113.32	103.06	102.52	105.50	98.21	106.01	96.14	98.45	110.85	108.23	86.85	93.51
<b>Surgery</b>												
July 2018 – June 2019	182	163	140	186	162	129	200	187	166	169	176	145
July 2019 – June 2020	229	185	169	183	179	155	166	150	208	201	166	105
year-on-year (%)	125.82	113.50	120.71	98.39	110.49	120.16	83.00	80.21	125.30	118.93	94.32	72.41
<b>Chemotherapy</b>												
July 2018 – June 2019	360	366	331	360	333	286	367	311	309	314	320	285
July 2019 – June 2020	392	349	324	388	322	279	367	315	335	329	273	275
year-on-year (%)	108.89	95.36	97.89	107.78	96.70	97.55	100.00	101.29	108.41	104.78	85.31	96.49
<b>Gallbladder &amp; Biliary tract Cancer</b>												
<b>All</b>												
July 2018 – June 2019	584	623	524	573	561	559	602	458	597	493	510	312
July 2019 – June 2020	642	547	586	583	519	546	599	540	549	538	516	295
year-on-year (%)	109.93	87.80	111.83	101.75	92.51	97.67	99.50	117.90	91.96	109.13	101.18	94.55
<b>Surgery</b>												
July 2018 – June 2019	36	34	27	28	36	31	50	32	39	31	28	16

July 2019 – June 2020	36	30	36	46	22	24	28	30	24	33	28	9
year-on-year (%)	100.00	88.24	133.33	164.29	61.11	77.42	56.00	93.75	61.54	106.45	100.00	56.25
<b>Chemotherapy</b>												
July 2018 – June 2019	89	113	94	99	93	80	76	62	78	61	86	59
July 2019 – June 2020	109	79	82	102	75	58	109	72	72	74	79	55
year-on-year (%)	122.47	69.91	87.23	103.03	80.65	72.50	143.42	116.13	92.31	121.31	91.86	93.22

---

Abbreviations; TUR-BT: Transurethral resection of bladder tumor, RFA: Radiofrequency ablation, TACE: Transcatheter arterial chemoembolization, TUR-P: Transurethral resection of prostate

**Table4. Interrupted time series analysis for total admissions cases of each cancer diagnosis**

Cancer diagnosis	aM *	Lower 95%CI	Upper 95%CI	P-value
Overall study population	0.92	0.91	0.93	<0.001
Colon/rectum	0.92	0.89	0.94	<0.001
Lung	0.95	0.91	0.98	0.001
Stomach	0.86	0.82	0.89	<0.001
Breast	0.90	0.86	0.94	<0.001
Bladder & Urinary tract	0.94	0.90	0.99	0.015
Pancreas	0.94	0.89	0.99	0.021
Non-Hodgkin lymphoma	0.90	0.85	0.95	<0.001
Prostate	0.90	0.84	0.96	0.002
Liver	0.97	0.92	1.02	0.210
Esophagus	0.87	0.82	0.94	<0.001
Uterus	0.93	0.86	0.99	0.031
Gallbladder & Biliary tract	0.98	0.91	1.05	0.553

\*: aM, adjusted multiplier: ( $e^{\beta}$ )

Abbreviations; CI:Confidence Interval