

1 **SARS-CoV-2 neutralizing antibodies; longevity, breadth,**  
2 **and evasion by emerging viral variants**

3

4 **Supplementary Figures**

5 **Fig. S1. Correlation matrices for antibody responses and demographic data in ADAPT**  
6 **(A) and LIFE (B).** Continuous measures of demographics (age, days post PCR-positivity) and  
7 antibody titers (Nucleocapsid, Spike IgG and IgM, and Membrane), were compared. R-square  
8 values are placed in the boxes (top-right) with P value significance shown in \*. Bottom-left  
9 show correlation plots with Loess line (red).

10

11 **Fig. S2. Spike IgG decay profile of high plasmapheresis donors.** Spike IgG titer over time  
12 is shown from n=30 LIFE donors who underwent >10 plasmapheresis donations. Despite high  
13 donations, donors with high Spike IgG titers decreased but stabilized at mid-levels, whereas  
14 donors with mid to low Spike IgG titers, stabilized at low titers. No donors seroreverted nor  
15 became negative for Spike IgG.

16

17 **Fig. S3. Hyper-permissiveness of Hek cell lines.** HekAT clonal cell lines and VeroE6 were  
18 infected with serially diluted SARS-CoV-2 and monitored for cytopathic effect (CPE) at 72  
19 hours post-infection. **(A)** Cell nuclei were stained with NucBlue and CPE quantified as % live  
20 cells. HekAT clones showed varying degrees of permissiveness to SARS-CoV-2 infection with  
21 HekAT24 being orders of magnitude more susceptible than VeroE6. WT Hek293T cells were  
22 refractory to infection and were used as negative control. **(B)** Bright-field images showing CPE

23 in WT Hek and HekAT clonal lines. Images were acquired using InCell high throughput  
24 imaging system. Magnification is 10X for all images. Representative images are shown.

25

26 **Fig. S4. GFP expression and positive individual status against two new Spike variants.**

27 **(A)** Expression of GFP reporter molecule expressed via the transcription of Spike-GFP  
28 monocistron in the pIRES2 plasmids was similar across all analysed variants allowing accurate  
29 comparisons between IgG levels between variants. **(B)** Pre-pandemic controls were below the  
30 threshold, whereas all first and second wave of ADAPT samples were above the positive  
31 threshold (Control + 4SD).

32

33 **Fig. S5. Individuals with reduced immunoreactivity to D614G Spike variant were more**

34 **likely to be females.** Mosaic plots of ADAPT (left) and LIFE (right) show individuals with  
35 restricted binding to Spike variant, i.e. reduced binding to D614G, were more likely to be  
36 females.

37

38

39

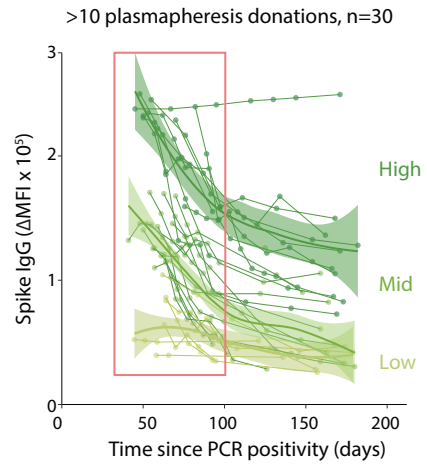
40

41

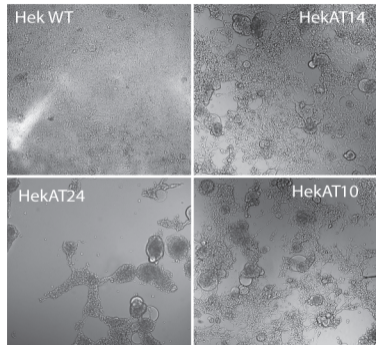
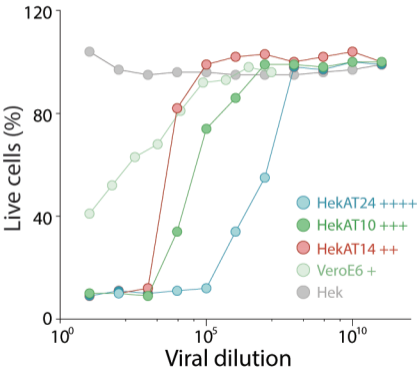
Supplementary Figure 1.



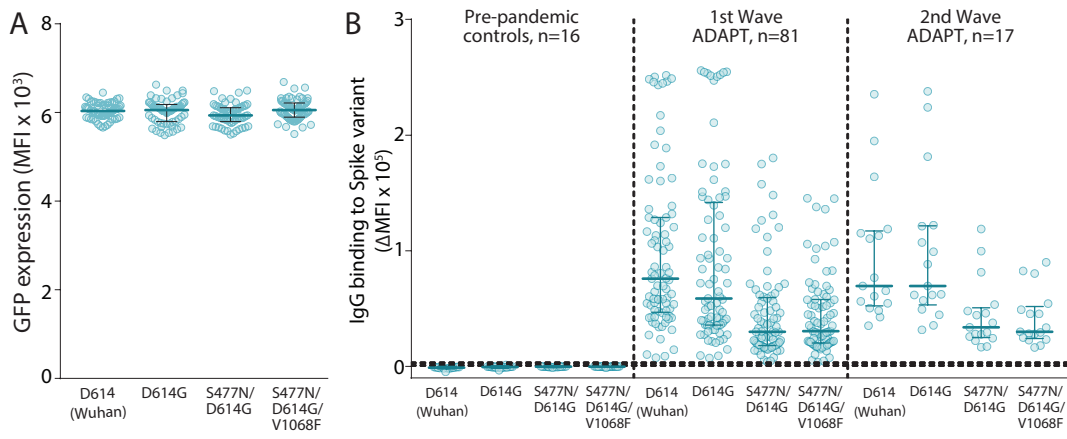
## Supplementary Figure 2.



# Supplementary Figure 3



Supplementary Figure 4



# Supplementary Figure 5

