

Predicting Prognosis and IDH Mutation Status for Patients with Lower-Grade Gliomas Using Whole Slide Images

Shuai Jiang, MHS¹, George J. Zanazzi, MD, PhD², Saeed Hassanpour, PhD^{1,3,4*}

¹Department of Biomedical Data Science, Geisel School of Medicine at Dartmouth, Hanover, NH 03755, USA

²Department of Pathology and Laboratory Medicine, Dartmouth-Hitchcock Medical Center, Lebanon, NH 03756, USA

³Department of Computer Science, Dartmouth College, Hanover, NH 03755, USA

⁴Department of Epidemiology, Geisel School of Medicine at Dartmouth, Hanover, NH 03755, USA

* Corresponding Author: Saeed Hassanpour, PhD

Postal address: One Medical Center Drive, HB 7261, Lebanon, NH 03756, USA

Telephone: (603) 650-1983

Email: Saeed.Hassanpour@dartmouth.edu

SUPPLEMENTARY MATERIALS

Figure S1. Kaplan-Meier curves and ROC curve evaluated among patients with grade 3 gliomas. (a), (b), (c) Kaplan-Meier curves by age, IDH mutations, and WSI risk score, respectively. P-value was calculated by log-rank test. (d) ROC curves for IDH mutation prediction.

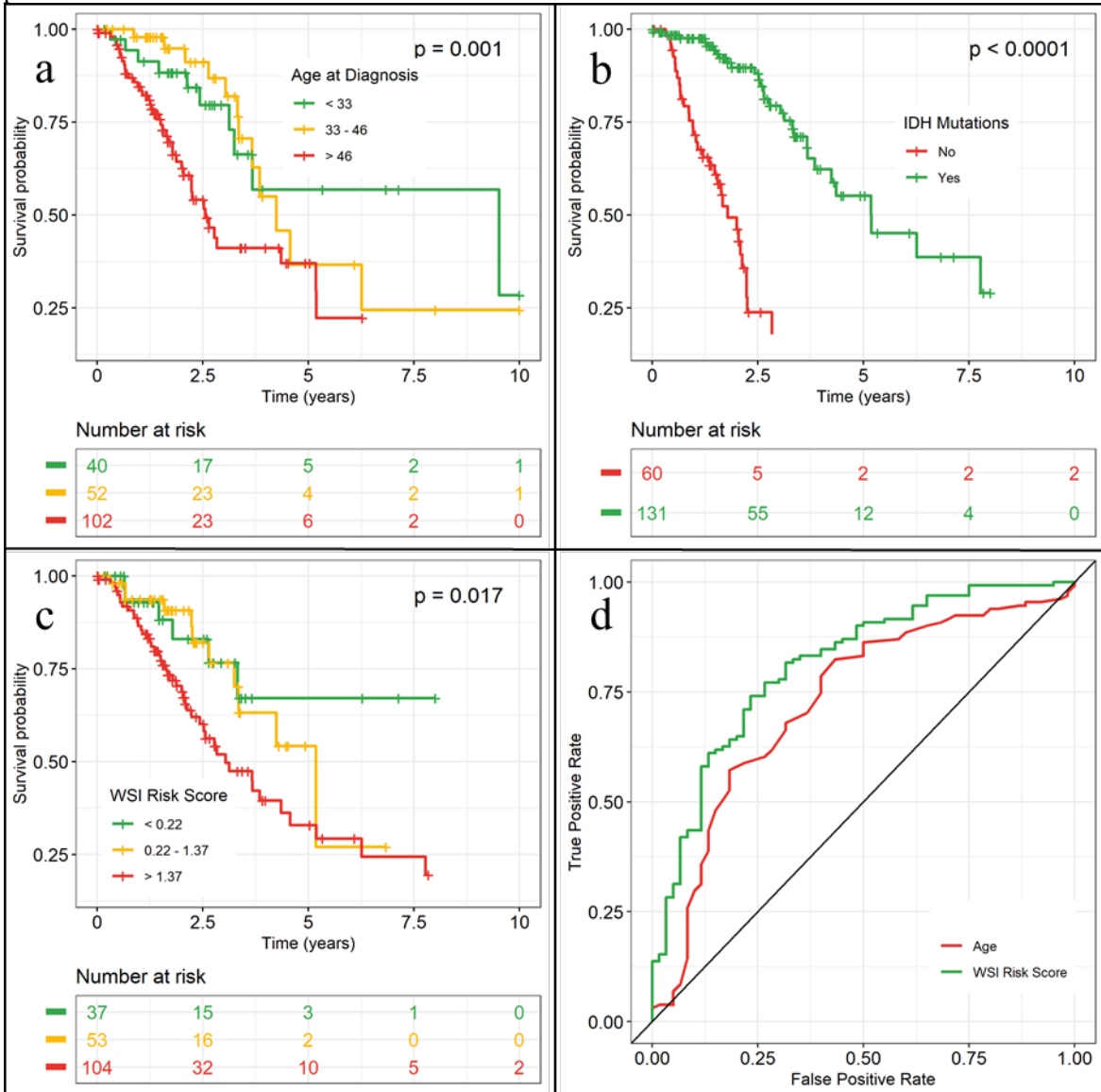


Figure S2. Example predictions on whole slide images for IDH mutation prediction. (a) A 33-year-old woman diagnosed with mixed glioma with an IDH mutation. **(b)** A 61-year-old woman diagnosed with mixed glioma without an IDH mutation.

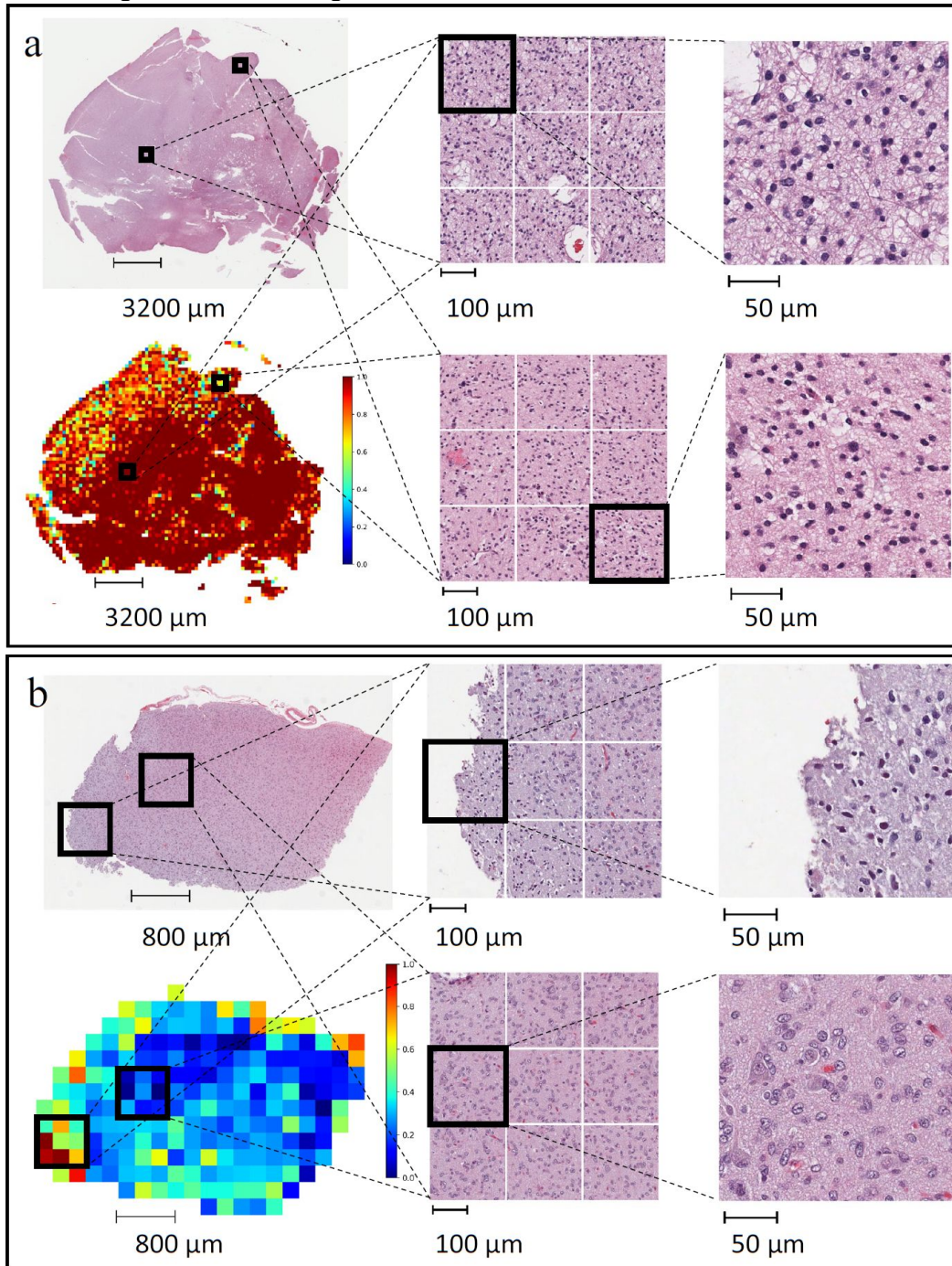


Table S1. Distribution of baseline characteristics among patients with LGG.

Variables	Mean (SD) / N (%)
Age	40.9 (13.0)
Gender	
Male	165 (55.7%)
Female	131 (44.3%)
Race	
White	271 (91.6)
Black or African American	13 (4.4%)
Asian	5 (1.7%)
American Indian or Alaska native	1 (0.3%)
Not reported	6 (2.0%)
Primary diagnosis	
Astrocytoma	59 (19.9%)
Oligoastrocytoma (Mixed Glioma)	130 (43.9%)
Oligodendroglioma	107 (36.1%)
IDH mutations	
IDH1 mutation	231 (80.2%)
IDH2 mutation	13 (4.5%)
Either IDH1 or IDH2 mutation	244 (84.7%)

Table S2. Distribution of baseline characteristics among patients with grade 3 gliomas.

Variables	Mean (SD) / N (%)
Age	46.6 (13.3)
Gender	
Male	106 (54.6%)
Female	88 (45.4%)
Race	
White	181 (93.3%)
Black or African American	7 (3.6%)
Asian	2 (1.0%)
American Indian or Alaska native	-
Not reported	4 (2.1%)
Primary diagnosis	
Anaplastic Astrocytoma	122 (62.9%)
Anaplastic Oligodendroglioma	72 (37.1%)
IDH mutations	
IDH1 mutation	125 (65.4%)
IDH2 mutation	6 (3.1%)
Either IDH1 or IDH2 mutation	131 (68.6%)

Table S3. Model performance statistics for survival prediction task and IDH mutation prediction task, evaluated among patients with grade 3 gliomas. 95% confidence intervals were derived from 10,000 bootstrapping replications. Bold texts indicate best performance for each column. * indicates statistically significant difference (p < 0.05).

Survival prediction performance: C-index [95% CI]			
	Without WSI Risk Score	With WSI Risk Score	Difference
None	-	0.654 [0.537, 0.768]	-
Age	0.729 [0.616, 0.833]	0.758 [0.660, 0.845]	0.029 [-0.041, 0.082]
Gender	0.514 [0.370, 0.613]	0.652 [0.536, 0.757]	0.138 [-0.006, 0.287]
Race	0.501 [0.445, 0.550]	0.644 [0.528, 0.760]	0.143 [0.028, 0.259]*
Primary diagnosis	0.563 [0.375, 0.646]	0.661 [0.544, 0.775]	0.098 [-0.014, 0.286]
IDH mutations	0.724 [0.640, 0.803]	0.757 [0.657, 0.844]	0.033 [-0.040, 0.092]
Age+IDH mutations	0.786 [0.683, 0.877]	0.792 [0.701, 0.876]	0.006 [-0.035, 0.037]
IDH mutation prediction performance: AUC [95% CI]			
	Without WSI Predicted IDH Mutation Probability	With WSI Predicted IDH Mutation Probability	Difference
None	-	0.814 [0.721, 0.897]	-
Age	0.728 [0.619, 0.833]	0.845 [0.759, 0.919]	0.117 [0.001, 0.198]*
Gender	0.521 [0.417, 0.618]	0.807 [0.713, 0.893]	0.286 [0.146, 0.415]*
Race	0.499 [0.440, 0.545]	0.812 [0.708, 0.901]	0.313 [0.210, 0.415]*
Primary diagnosis	0.646 [0.556, 0.732]	0.834 [0.740, 0.915]	0.188 [0.091, 0.264]*
Age + Race	0.716 [0.600, 0.821]	0.842 [0.739, 0.917]	0.126 [0.014, 0.211]*