

Validating quantitative PCR assays for cell-free DNA detection without DNA extraction: Exercise induced kinetics in systemic lupus erythematosus patients

Elmo W.I. Neuberger¹, Alexandra Brahmer¹, Tobias Ehlert¹, Katrin Kluge¹, Keito F.A. Philippi¹, Simone C. Boedecker², Julia Weinmann-Menke² and Perikles Simon^{1,*}

¹Department of Sports Medicine, University of Mainz, Mainz, Germany. Albert-Schweitzer Str. 22, 55128 Mainz, Germany.

²Department of Rheumatology and Nephrology, University Medical Center Mainz, Germany. Langenbeckstr. 1, 55101 Mainz, Germany.

* simonpc@uni-mainz.de

ABSTRACT

Circulating cell-free DNA (cfDNA) has been investigated as a screening tool for many diseases. To avoid expensive and time-consuming DNA isolation, direct quantification PCR assays can be established. However, rigorous validation is required to provide reliable data in the clinical and non-clinical context. Considering International Organization for Standardization, as well as bioanalytical method validation guidelines we provide a comprehensive procedure to validate assays for cfDNA quantification from unpurified blood plasma. A 90 and 222 bp assay was validated to study the kinetics of cfDNA after exercise in patients with systemic lupus erythematosus. The assays showed ultra-low limit of quantification (LOQ) with 0.47 and 0.69 ng/ml, repeatability $\leq 11.6\%$ (95% CI: 8.1–20.3), and intermediate precision $\leq 12.1\%$ (95% CI: 9.2–17.7). Incurred sample reanalysis confirmed the precision of the procedure. The additional consideration of pre-analytical factors shows that centrifugation speed and temperature do not change cfDNA concentrations. In SLE patients cfDNA increases ~2 fold after all out walking exercise, normalizing after 60 min of rest. The established assays allow reliable and cost-efficient quantification of cfDNA in minute amounts of plasma in the clinical setting and can be used as a standard to control pre-analytical factors including cfDNA losses during purification.

Introduction

Circulating cell-free DNA (cfDNA) is recognized to have reasonable prognostic or diagnostic potential in several pathological diseases including cancer, sepsis, and autoimmune diseases such as SLE^{1,2}. In 1966 Tan et al. described high levels of cfDNA in serum of SLE patients³. Since that time, a plethora of studies confirmed elevated cfDNA concentrations in serum and plasma of SLE patients with active or inactive disease (reviewed in²). In patients with autoimmune disease, high levels of cfDNA are considered to be a relevant antigen for auto anti-body development⁴⁻⁶. Intriguingly, cfDNA concentrations increase about 10 fold during all out exercise, showing a half-life of ~15 min in the healthy population⁷⁻⁹. While regular physical exercise is recommended for SLE patients, and several studies provided reasonable evidence that regular exercise reduces fatigue and increases cardiovascular fitness in SLE patients¹⁰, the kinetics of cfDNA during exercise in SLE patients are still unknown. A minimal invasive and cost-efficient assay is a valuable tool to monitor cfDNA concentrations, which might be indicative for overtraining or disease remission^{11,12}.

Most cfDNA quantification assays require pre-analytical DNA extraction¹³. A process, which is costly, time consuming and has been shown to lead to variable loss of cfDNA depending on the extraction method employed^{14,15}. To avoid cfDNA isolation, direct quantification assays have been established^{14,16}. Using multilocus primers, which bind various sites in the human genome, a sufficient sensitivity can be reached. The hominoid specific long interspersed element 1 (LINE1) family 2 (L1PA2) is a suitable target, according to its abundance and specificity¹⁷.

medRxiv preprint reports new research that has not been certified by peer review and should not be used to guide clinical practice.

46 A major prerequisite for reliable cfDNA detection is the evaluation of the assay performance. In 2019 the
47 International Organization for Standardisation (ISO) published a guideline which comprehensively specifies the
48 requirements for evaluating the performance of quantification methods for nucleic acid target sequences for
49 quantitative real-time PCR (qPCR) and digital PCR (dPCR)¹⁸.

50 Based on previous work¹⁹, we describe the validation of reliable qPCRs assays for the quantification of cfDNA.
51 Considering the relevant guidelines we emphasize the specificity, precision, including repeatability and
52 intermediate precision, limit of detection (LOD), limit of quantification (LOQ), linearity, as well as incurred
53 sample reanalysis. Since cfDNA typically shows a length of about 166bp²⁰, the combination of a 90bp assay and
54 222bp assay enables the evaluation of DNA integrity^{21,22}.

55 The assays could be applied successfully to quantify cfDNA samples in the clinical context. We show that exercise
56 induced cfDNA increases start to decline after 30 min in SLE patients, normalizing after 60 - 90 min. Since
57 elevated cfDNA concentrations have been discussed to possibly trigger enhanced inflammation or the production
58 of anti-ds-DNA antibodies, low increases during and rapid decreases after exercise are rather positive aspects of
59 cfDNA kinetics during exercise in SLE patients. The direct quantification enables a time and cost saving
60 quantification assay, which further could be standard assay to control for pre-analytical factors including cfDNA
61 losses during purification. Furthermore, according to its high sensitivity the assay can be used to study cfDNA in
62 other body liquids, cell culture supernatant.

63 Methods

64 **Ethics approval and exercise testing.** SLE patients were recruited at the Department of internal Medicine,
65 University Medical Center, Mainz, Germany. Patients with a stable immunosuppressive medical therapy and no
66 active lupus nephritis were asked to participate in an exercise intervention study (ClinicalTrials.gov Identifier:
67 NCT03942718, date of first registration 08.05.2019)²³. The registered study aims to evaluate the effects of a 12-
68 week exercise program on cardiorespiratory fitness. In the context of this assay validation study the samples from
69 the initial examination time point were used to study the kinetics of cfDNA in SLE patients during and after acute
70 exercise. The experimental procedures were approved by the Human Ethics Committee of Rhineland-Palatine and
71 were in line with the Declaration of Helsinki of the World Medical Association. All participants gave their
72 informed consent for study participation. A total of 28 eligible study participants performed a stepwise exercise
73 test until volitional exhaustion with a modified walking protocol²³. Speed and elevation of the treadmill were
74 increased stepwise every three minutes until the participants stopped the test volitionally. Heart rate and respiratory
75 gas exchange were monitored continuously.

Characteristics of the study subjects	Mean	± SD
Age (years)	49,42	8,70
Weight (kg)	77,53	18,54
Height (cm)	166,43	8,34
BMI	27,96	6,07
SLEDAI	6,50	4,42
VO ₂ peak (ml/min/kg)	24,34	5,04
Exercise time until exhaustion (min)	13,61	3,67
Medication, n (%)	22 (78%)	
Steroids	17 (61%)	
Hydrochloroquine	14 (50%)	
Belimumab	4 (14%)	
Cyclophosphamide	1 (3%)	
Azathioprine	2 (7%)	
Mycophenolate mofetil	7 (25%)	
No medication, n (%)	6 (21%)	

76 **Table 1.** SLE patients' characteristics. SLEDAI = Systemic Lupus Erythematosus Disease Activity Index, BMI =
77 Body Mass Index.

78 **Blood sample collection.** Venous blood samples from the cubital vein were collected before, directly after,
79 and 90 min after the exercise test. The utilized blood collection products are listed in Supplementary Table S1.
80 The samples were centrifuged immediately after drawing two times at 2500 x g for 15 min at room temperature
81 (RT), to collect platelet-free plasma.²⁴ Capillary blood samples were collected from the fingertip and stored at 4°C
82 before centrifugation at 600 x g for 10 min. For comparison of centrifugation protocols, venous blood samples
83 were centrifuged as indicated.

84 **Assay validation material.** Linearity and accuracy of the direct quantification method was tested on a custom-
85 made 401-bp fragment from the L1PA2 family (Supplementary Table S2). The fragment was synthesized by
86 Eurofins MWG Operon, cloned into a pEX-A plasmid (Eurofins MWG Operon), amplified in bacteria before DNA
87 isolation with QIAprep Spin Miniprep Kit (Qiagen, Hilden, Germany). After EcoRI restriction the 401 bp
88 Fragment was gel purified with QIAquick Gel Extraction Kit (Qiagen, Hilden, Germany). The concentration was
89 determined with a NanoDrop 3300 fluorospectrometer (Thermo Fisher Scientific, Inc., Waltham, MA) using
90 Quant-iT™ PicoGreen dye (Thermo Fisher Scientific, Inc., Waltham, MA). For precision studies, a pool of venous
91 plasma from six healthy subjects before (PRE exercise sample) and after exercise (POST exercise sample) was
92 used.

93 **Sample preparation and qPCR.** Plasma samples were diluted 1:10 in UltraPure™ DNase/RNase-Free H₂O
94 (Invitrogen, Waltham, MA). For the qPCR, 2 µl of the diluted plasma, were mixed with 12 µl master-mix, 1 µl
95 primer mix, and measured in triplicates with a final volume of 5 µl. The primer sequences are listed in
96 Supplementary Table S3. The final concentrations in the PCR reaction are 1.2X HiFi buffer (BioCat, Heidelberg,
97 Germany), 0.3 mM of each dNTP (Carl Roth, Karlsruhe, Germany), 0.15X SYBR Green (Sigma, Taufkirchen,
98 Germany), 0.04 IU Velocity Polymerase (BioCat, Heidelberg, Germany), and 140 nM of each primer. For
99 amplification a CFX384 system with the following protocol was used: 98°C for 2 min followed by 35 cycles of
100 95°C for 10 sec (denaturation) and 64°C for 10 sec (annealing/extension) including the plate read. A melt curve
101 from 70 – 95°C with 0.5 °C increments for 10 sec finished each run. If the triplicates of the samples show a SD
102 C_q > 0.4, native plasma samples were re-diluted and reanalyzed.

103 **In silico calculation of L1PA2 copy numbers per genome.** To determine the number of targets for the
104 L1PA2_90bp and L1PA2_222bp primer pairs in the human genome (GRCh38/hg38), the UCSC Genome Browser
105 *In-Silico PCR* tool was used (<https://genome.ucsc.edu/cgi-bin/hgPcr>). The Max Product Size (Maximum size of
106 amplified region) was set to 660 bp, which equals the predicted maximal amplification rate of the polymerase
107 during 10s amplification. Min Perfect Match (Number of bases that match exactly on 3' end of primers) was set to
108 19 bp. The predicted sequences per chromosome and the length distribution are provided in Supplementary Fig.
109 S4 and Table S5.

110 **Calculation of cfDNA concentration in plasma samples.** To determine the cfDNA concentration in
111 (ng/ml) from the C_q values of samples the following calculation is applied: $\text{ng/ml} \triangleq \text{pg}/\mu\text{l} = 10^{(\text{C}_q - \text{intercept})/\text{slope}} / 5\mu\text{l}$
112 $/ (1/75) * 3.23 \text{ pg} / (3416 \text{ for L1PA2 } 90\text{bp or } 3237 \text{ for L1PA2 } 222\text{bp})$. Using the slope and the intercept from the
113 validated standard curve the total number of copies per 5µl qPCR reaction are calculated. A division by 5 results
114 in copy numbers per µl. The copy numbers per µl plasma are calculated by considering the total dilution factor of
115 plasma 1/75 (plasma dilution 1/10 and qPCR dilution: 2µl template per 15µl reaction). The copy number per µl is
116 divided by the number of predicted sequences in the human genome (3416 for the L1PA2_90bp and 3237 for the
117 L1PA2_222bp). The result reflects the number of genome equivalents (GE) per ml plasma. The resulting GE are
118 multiplied with 3.23 pg (the expected weight of a haploid genome²⁵) to calculate the pg concentration per µl
119 plasma, equaling ng/ml.

120 **PCR run interplate calibration.** The CFX384 real-time system calculates the C_q values based on the crossing
121 point of the fluorescence traces with an auto-calculated threshold line. The threshold is dependent on the total
122 number of samples and fluorescence intensity. To correct for inter-plate differences, two reference samples are
123 measured in each run. For the analysis of the results, the threshold is adapted so that the mean of the C_q values of
124 the reference samples equals the pre-defined mean C_q value. The pre-defined mean C_q value is based on the mean
125 autocalculated C_q values of 10 PCR runs from two different operators. The indicated reference samples are a pre-
126 and a post-exercise plasma samples from a single subject. Typical amplification curves are shown in
127 Supplementary Fig. S6.

128 **Determination of assay performance.** For the determination of the *dynamic range*, *assay linearity*, *LOD* and
129 *LOQ* the purified L1PA2 DNA fragment was spiked into mouse plasma (1:10 final dilution). Mouse plasma is a
130 relevant sample matrix and does not contain the human specific L1PA2 sequences. Three independent standard
131 curves were prepared for each of the assays on different days. Each concentration (1 x 10⁶ - 25 copies per well)
132 was pipetted in septet replicates (Fig. 1). H₂O and mouse plasma NTC controls, as well as the reference samples
133 were pipetted on each plate. For the determination of the LOQ the results from all standard curves were combined
134 to generate imprecision profiles using the Variance Function Program VFP (v1.2) with R (v3.6.3) (Fig. 1). The

135 LOD was defined as the lowest concentration of the target analyte which can be detected with a 95% detection
136 rate^{26,27}. Where applicable, the CLSI guideline EP17-A2 were used, defining a limit of blank (LOB) = $\text{Mean}_{\text{copy}}$
137 $\text{number blank} + 1.645 \times \text{SD}_{\text{copy number blank}}$ and $\text{LOD} = \text{LOB} + 1.645 \times \text{SD}_{\text{low copy number sample}}$ ²⁸.

138 *Assay imprecision.* To evaluate the influence of the plasma dilution process, 20 replicates of the PRE and POST
139 samples were measured in a single run. 10 replicates were measured from the same diluted plasma pool and 10
140 replicates were diluted 1:10 uniquely. The coefficient of variation (CV) was calculated with the formula $\text{CV} =$
141 $(\text{Standard Deviation} / \text{Mean}) * 100$. To estimate the repeatability and intermediate precision 20 replicates were run
142 in duplicates over 10 different PCR runs.

143 *Direct quantification compared to kit isolation.* To compare the concentration of cfDNA before and after DNA isolation
144 using custom DNA extraction kits, plasma was aliquoted in 15 tubes and frozen at -20°C. Five of the aliquots (1ml
145 plasma) were purified with the QIAamp® Circulating Nucleic Acid kit (Qiagen, Hilden, Germany) (Purification
146 kit 1), and the NucleoSnap cfDNA kit for cell-free DNA from plasma (Macherey-Nagel, Düren, Germany)
147 (Purification kit 2), respectively. Additionally, 5 aliquots of 400µl plasma were isolated with the QIAamp DNA
148 Blood Mini Kit (Qiagen, Hilden, Germany) (Purification kit3). All samples were eluted in H₂O (1/10 of input
149 volume). For the direct quantification, from each plasma aliquot a dilution was prepared. All samples were
150 measured after a single freeze thaw cycle.

151 *Incurred sample reanalysis:* To verify the reliability of the cfDNA concentration in the study samples, a subset of two
152 samples from each qPCR run was re-analyzed in the subsequent run. The percentage difference of the cfDNA
153 concentration between the first and the repeated measurement is determined with the following equation: $(\text{Repeat}$
154 $- \text{First}) / \text{Mean} * 100$, according to the Bioanalytical Method Validation Guidance for Industry²⁹.

155 *Storage stability:* To determine the stability of plasma dilutions 20 samples of a former study were reanalyzed after
156 > 2 month of storage at -20°C. To determine the storage stability of whole blood before centrifugation, four venous
157 and capillary samples were taken consecutively and centrifuged at 2500 x g for 10 min directly after blood drawing,
158 after 60 min, 90 min, or 180 min.

159 **Data analysis.** The qPCR analysis was performed with the CFX Manager software Version: 3.1.1517.0823.
160 Python (v3.7.6) with ‘matplotlib’ (v3.1.1), and ‘seaborn’ (v0.9.0), and R (v3.6.3) with ggplot2 (v3.3.2) were used
161 for descriptive analysis. The imprecision calculation were performed using the R ‘VFP’ package (v1.2). Linear
162 mixed models were conducted with the ‘lme4’ package (v1.1.23), to determine if capillary and venous cfDNA
163 levels differ and respond differently to exercise. The ‘emmeans’ package (v1.4.8) was used to compute tukey
164 corrected P values. Pearsons r or Spearman’s rho were calculated for normally or not normally distributed data,
165 respectively.

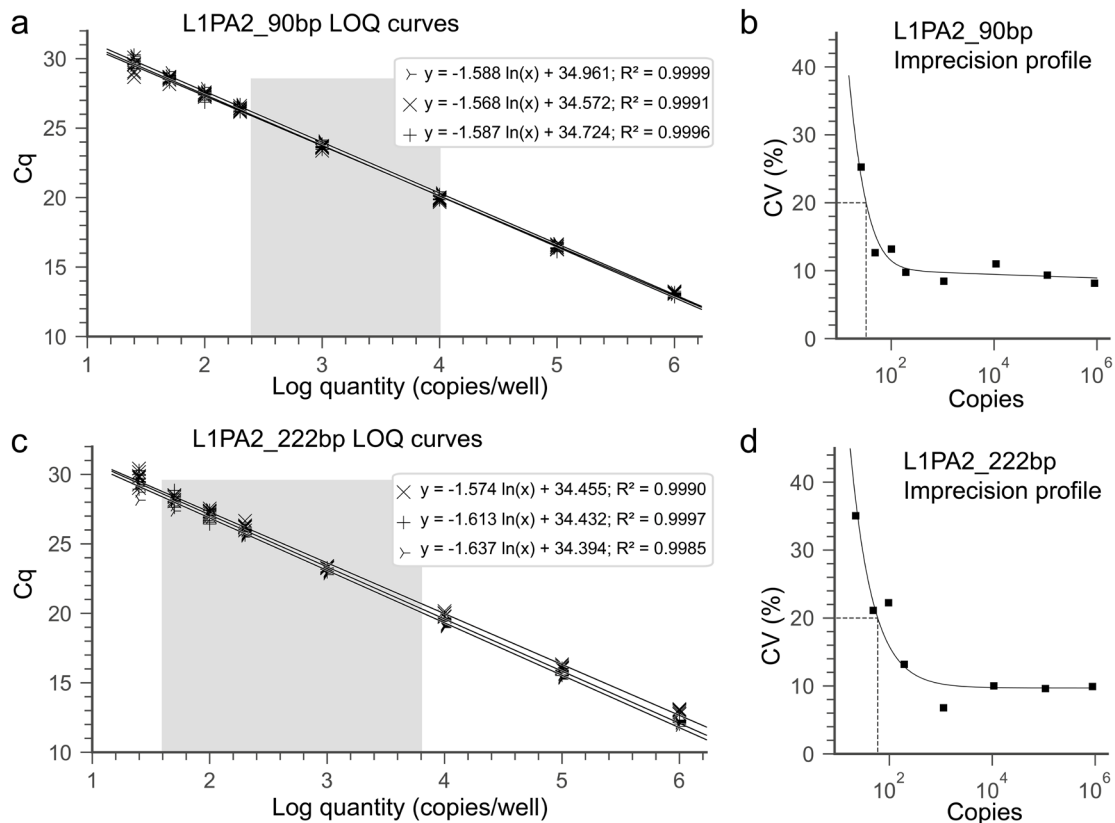
166 Results

167 **Characteristics of SLE patients.** A total of 28 SLE patients (27 female, 1 male) were eligible for the study
168 and participated in the performance diagnostic test without adverse events. The patients’ characteristics (Table 1)
169 indicate a higher body mass index (BMI), and lower physical fitness (VO₂peak) compared to the healthy
170 population³⁰.

171 **Assay performance.** *Dilution linearity and dynamic range.* The independent LOQ curves show similar slope and
172 y-intercept (Fig. 1). The efficiencies for the different standard curves are slightly lower than 90%. Ranging between
173 87.77 and 89.25% for the L1PA2_90bp assay and between 84.19 and 88.75% for L1PA2_222bp assay.

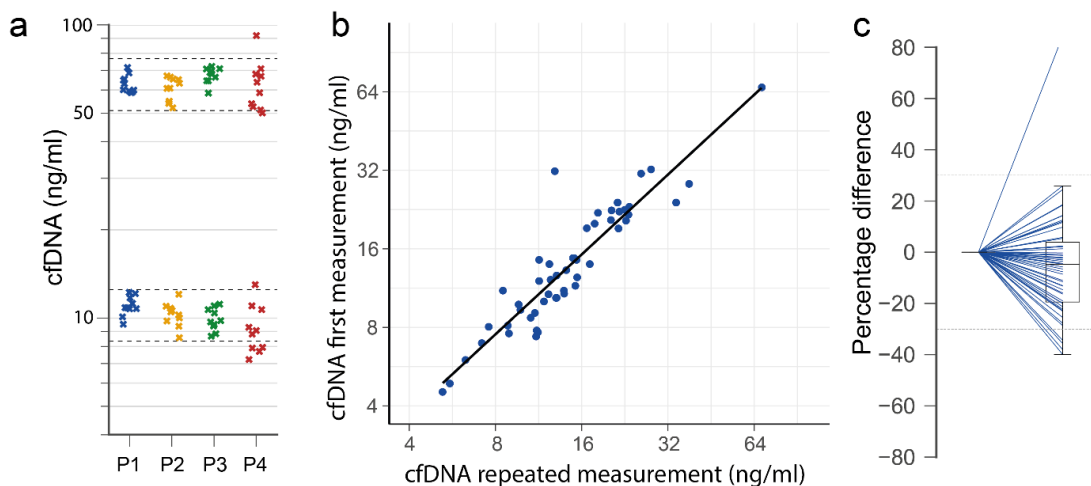
174 *LOD and LOQ.* All replicates of the low copy samples (25 copies) were detectable with the L1PA2_90bp and the
175 L1PA2_222bp assay, not reaching LOD (Fig. 1). Of note, as shown in Supplemental Fig. S6, the NTCs of the
176 L1PA2_90bp assay produce some background signal, which needs to be distinguishable from low copy samples.
177 Since the data were normally distributed with homogenous variances, the LOB and LOQ were calculated according
178 to the CLSI guideline²⁸. The L1PA2_90bp assay shows a LOB of 8.39 copies and LOD of 18.59 copies. The LOQ,
179 which was derived from the imprecision profile was 32.5 copies for the L1PA2_90bp and 59.26 copies for the
180 L1PA2_222bp (Fig. 1), equaling a concentration of 0.47 ng/ml and 0.69 ng/ml, respectively.

181 *Imprecision studies.* The CVs were similar between the pooled or uniquely diluted plasma samples with 7.32% and
182 8.77% (PRE exercise sample), and 6.67% or 8.51% for the POST exercise sample (L1PA2_90bp assay) (Fig. 2a).
183 For the L1PA2_222bp the CVs were 9.17 and 9.37% for the PRE exercise and 7.55 and 8.56 for the post exercise
184 samples. The precision calculation for the measurements of the PRE and POST samples in repeated runs, resulted
185 in a repeatability ≤ 11.59% (95% CI: 8.10 – 20.34) for the two assays.



186

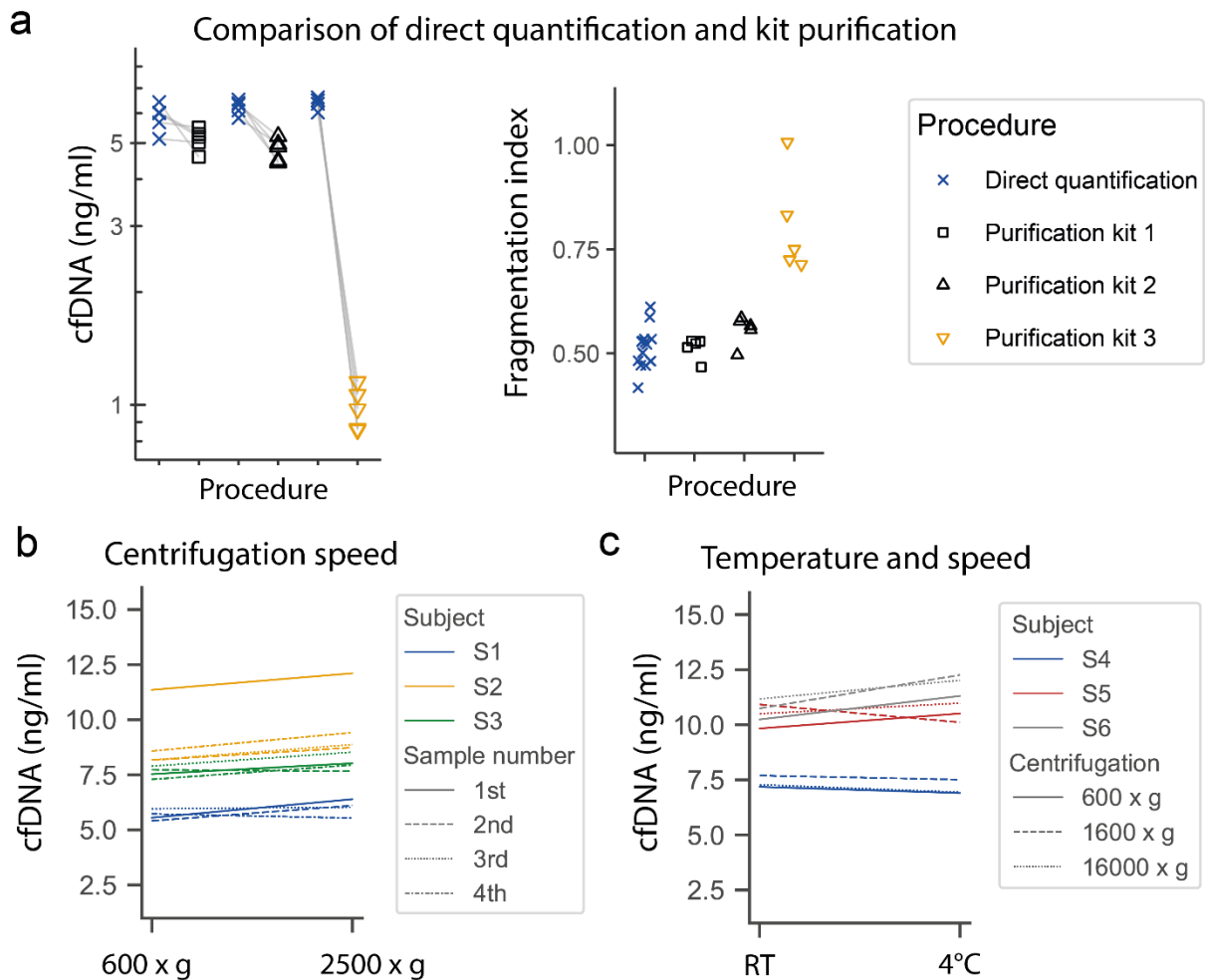
187 **Figure 1.** Standard curves and imprecision profiles for the L1PA2_90bp assay (**a, b**) and the L1PA2_222bp assay
 188 (**c, d**). Three independent standard curves, with septets per concentration were prepared for each assay. The
 189 imprecision profiles were calculated with the formulas: $\sigma^2 = 31.37 + 0.011 \times U^{1.975}$ and $\sigma^2 = (6.10 + 0.097 \times U)^2$
 190 for the 90 bp (**b**) and 222 bp assay (**d**), respectively. The grey area indicates the quantification range of cfDNA
 191 concentrations in this study. Cq = cycle quantification value, LOQ = lower limit of quantification, CV = coefficient
 192 of variation.



193

194 **Figure 2.** Precision of the L1PA2_90bp assay. (**a**) The same pool of plasma dilution of a low and high
 195 concentration sample was measured 10 times (P1), the same plasma was individually diluted 10 times (P2), the
 196 plasma dilution was measured in 10 consecutive runs in duplicate (P3 = mean of duplicates after inter-plate
 197 calibration, P4 = mean of duplicates before inter-plate calibration). The dashed lines indicate $\pm 20\%$ of the nominal
 198 mean of conditions P1-3. Incurred sample reanalysis. From each run of the study samples, two samples were re-
 199 analyzed. (**b**) Correlation of the first and second measurement. (**c**) Percentage difference between original and
 200 second measurement.

201 *Inter-run calibration.* After the inter-run calibration the intermediate precision, calculated from 10 consecutive qPCR
 202 runs, reduced for the LIPA2_90bp assay from 23.80% (95% CI: 17.96 – 35.31) to 11.62% (95% CI: 8.77 – 17.22)
 203 (PRE sample), and from 24.75% (96% CI: 18.47 – 37.51) to 8.46% (95% CI: 6.40 – 12.45) (POST sample) (Fig.
 204 2a). For the LIPA2_222bp assay the intermediate precision reduced for the PRE sample from 18.01% (95% CI:
 205 12.58 – 31.61) to 12.97 (95% CI: 8.90- 18.24), and the POST sample from 21.54% (95% CI: 16.04 – 32.78) to
 206 12.06% (95% CI: 9.16 – 17.69).



207
 208 **Figure 3.** Direct quantification of cfDNA compared to DNA purification and influence of centrifugation speed
 209 and temperature on cfDNA concentration. (a) Plasma aliquots of the same sample were directly quantified or
 210 analyzed after DNA isolation with custom DNA isolation kits, to determine the cfDNA concentration (left) and
 211 the fragmentation index (right). (b) From different subjects (S1-S3) four samples were consecutively collected in
 212 different blood containers, centrifuged at 600 x g or 2500 x g for 10 min and measured with the LIPA2_90bp
 213 assay. (c) From each subject a single blood sample was collected and centrifuged consecutively at indicated speed
 214 at 4°C or room temperature (RT) and measured in duplicate, mean values are illustrated.

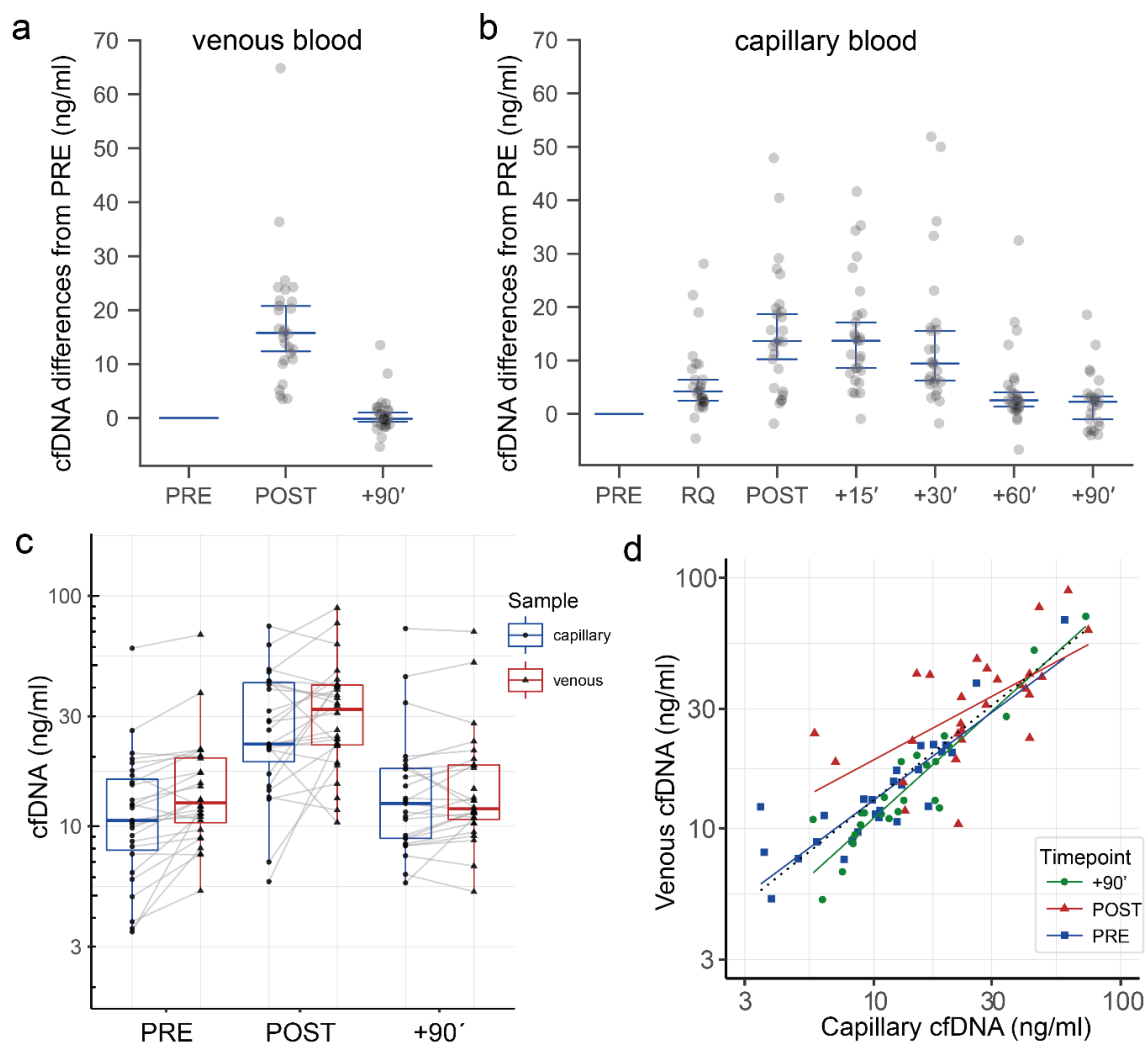
215 **Stability of plasma dilutions.** Plasma samples can be stored at -20°C or -80°C for years without affecting
 216 cfDNA concentration³¹. To determine the stability of 1:10 plasma dilutions, 20 diluted samples were re-analyzed
 217 with the LIPA2_90bp assay after storage for > 2 month at -20°C. cfDNA concentrations did not differ significantly
 218 (P = 0.35) and no degradation was obvious after a repeated freeze-thaw cycle. Prolonged storage of whole blood
 219 (up to 180 min) before centrifugation did not lead to relevant cfDNA concentration changes (Supplementary Fig.
 220 S7).

221 **Effects of cfDNA purification.** The use of specific DNA isolation kits for cfDNA isolation from plasma
 222 (Purification kit 1 and 2) slightly affects the cfDNA concentration and DNA integrity (Fig. 3a). During the isolation
 223 process about 12% (± 9.5) and 23% (± 6.2) are lost with Purification kit 1 or 2, respectively. A kit for whole blood
 224 DNA isolation (Purification kit 3) leads to relevant DNA losses of about 84% and increased DNA integrity, which
 225 indicates a loss of short DNA fragments.

226 **Influence of centrifugation speed or temperature.** As shown in Fig. 3b and 3c, centrifugation speed and
227 temperature does not influence the cfDNA concentration in venous plasma. The concentration differences are
228 within the assay precision of the L1PA2_90bp assay. Notably, as shown in Fig. 3b in one subject the first of 4
229 taken samples shows higher cfDNA levels (independent from centrifugation speed), indicating that the first sample
230 should be discarded.

231 **Incurred sample reanalysis.** During the course of the study ~17% of the SLE study samples were reanalyzed.
232 The cfDNA concentrations correlate well between first and repeated analysis ($r=0.925$, $p<0.0001$) (Fig. 2b).
233 Among the reanalyzed samples, 5 samples (9.16%) measured with the L1PA2_90bp assay show a difference $>$
234 $\pm 30\%$ between the initial and the repeated measurement (Fig. 2c). 25.53% of the reanalyzed samples show a
235 difference $> \pm 30\%$ between first and repeated measurement in the L1PA2_222bp assay.

236 **cfDNA measurement in study samples.** A total of 280 study samples were measured with each of the assays.
237 Seven (2.5%) of the samples measured with the L1PA2_90bp, and 21 (7.5%) measured with the L1PA2_222bp
238 assay showed repeatedly high SD of Cq values and were declared to be not measurable.



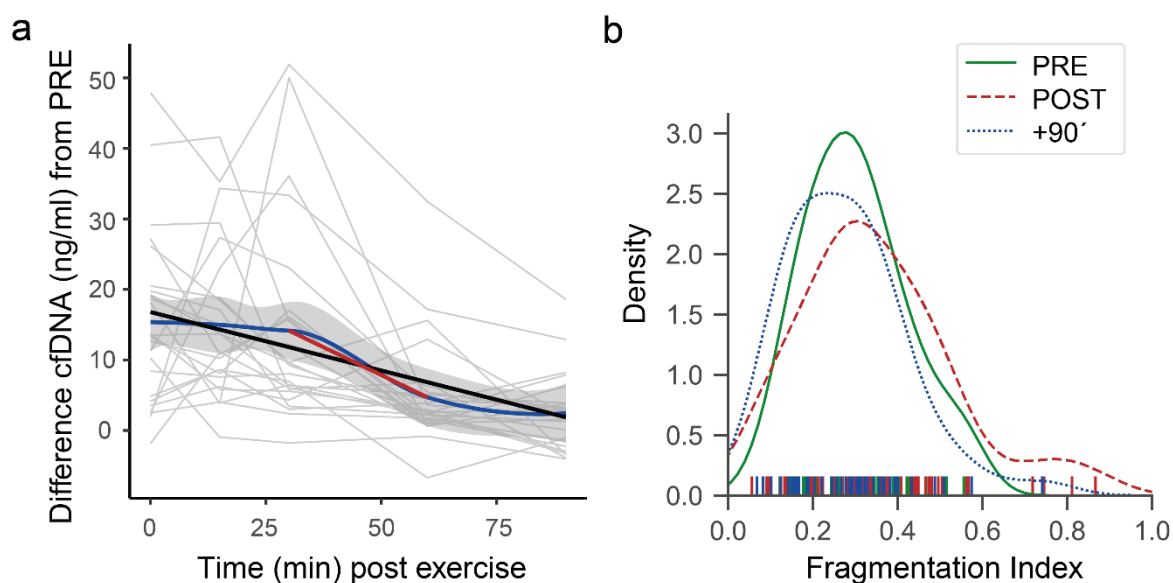
239 **Figure 4.** Kinetics of venous and capillary cfDNA measured with the L1PA2_90bp assay before and after exercise.
240 Differences of cfDNA from PRE samples during and after exercise in venous plasma samples (a) and capillary
241 plasma samples (b) (median and 95% CI are illustrated). (c) Boxplots of cfDNA concentration in capillary and
242 venous plasma samples. (d) Correlation between venous and capillary cfDNA concentrations.

244
245 **Kinetics of cfDNA after exercise.** The estimated means of the SLE patients' venous cfDNA levels increased
246 significantly ~2.1 fold from 13.9 ng/ml (95% CI: 10.4–18.8) to 29.6 ng/ml (95% CI: 22.0–39.9) and decreased to
247 14.1 ng/ml (95% CI: 10.5–19.9) 90 min after walking exercise (Fig. 4c). Similarly, the capillary samples increased
248 significantly ~2.2 fold from 11.1 ng/ml (95% CI: 8.0–15.4) to 24.8 ng/ml (95% CI: 17.9–34.4) and decreased to

249 13.6 ng/ml (95%CI: 10.0–18.4). After 90 min the concentrations declined to PRE exercise values again. A detailed
250 results table for the multiple comparisons is given in Supplementary Table S8 and S9. Fig. 4a and 4b display the
251 differences of cfDNA levels from the PRE value.

252 The comparison between venous and capillary cfDNA concentrations (Fig. 4d) shows an overall correlation of R^2
253 = 0.774, $p < 0.0001$ (dotted black line). The correlation between venous and capillary samples is higher for the
254 PRE exercise ($R^2 = 0.933$, $p < 0.0001$), and +90 min samples ($R^2 = 0.974$, $p < 0.0001$) compared to POST exercise
255 samples ($\rho = 0.726$, $p = 0.0002$).

256 As indicated in Fig. 5a cfDNA remains increased until 30 min post exercise. The linear regression across all time
257 points (black line) indicates a half-life of ~30 min (slope = -0.167, intercept = 16.87). Between 30 min post exercise
258 and 60 min post exercise the cfDNA concentrations show the highest decay rate. The linear regression between
259 +30 and +60 min indicates a half-life of about ~15 min (red regression line, slope = -0.315, intercept = 23.61). The
260 fragmentation index, calculated as the quotient of the concentrations of the longer L1PA2_222bp fragments and
261 the shorter L1PA2_90bp fragments, increases from 0.33 ± 0.23 ng/ml at the PRE time point to 0.35 ± 0.23 ng/ml
262 post exercise, and decreases to 0.32 ± 0.26 ng/ml after 90 min (Fig. 5b).



263
264 **Figure 5.** cfDNA decay and fragmentation index. (a) The ‘loess’ regression line (blue, with 95% CI in grey)
265 indicates that levels of cfDNA remain increased until 30 min post exercise and decrease most strongly between
266 +30’ and +60’ (red linear regression line). (b) Distribution of the fragmentation index of all study samples.

267 Discussion

268 During the last years, cfDNA has been increasingly studied for its prognostic or diagnostic potential in various
269 clinical fields^{2,32,33}. A prerequisite to use cfDNA levels for monitoring applications is to ensure reliable and
270 reproducible quantification³⁴. The ISO guideline ISO 20395:2019 specifies the requirements for evaluating the
271 performance of quantification methods for nucleic acid target sequences for qPCR and dPCR experiments¹⁸. The
272 guideline provides a profound background to validate qPCR assays, comprising the MIQE and relevant CLSI
273 guidelines. To compare the cfDNA concentrations of the SLE study samples over multiple runs, we implemented
274 an inter-plate calibration procedure which allows reliable comparison of cfDNA concentrations between different
275 qPCR runs. To ensure the reproducibility of the direct quantification method in plasma of SLE patient who receive
276 medication we applied incurred sample re-analysis, to verify the concentration of cfDNA³⁵.

277 The, established L1PA2_90bp and L1PA2_222bp qPCR assays enable reliable direct quantification of cfDNA in
278 minute amounts of plasma samples. A unique advantage of the assays is that the plasma samples do not need to be
279 purified. A step which is time and cost consuming and can introduce errors in the quantification process. As shown
280 in Fig. 3a, especially DNA isolation kits, which are not specifically established to isolate cfDNA from plasma can
281 lead to reduced cfDNA concentrations and the loss of short DNA fragments^{15,36}. Importantly, our assay could be
282 used as a standard to control for DNA losses and to estimate the integrity of the isolated DNA samples.

283 At the time, there is no defined number of replicates to determine LOQ, whereas a minimum of 10 replicates in
284 total per concentration is recommended¹⁸. For the precision studies, pooled PRE and POST exercise plasma were

285 used representing low and high copy number samples. The CV for all samples, were below 10%, indicating
286 sufficient precision to clearly discriminate the effects of exercise. To determine the relative repeatability and
287 relative run-to-run variation standard deviations, duplicates of the low and high copy plasma pools were measured
288 in 10 consecutive qPCR runs. All precision estimations were below 12.1%.

289 Whenever samples are not analyzed in the same run, it is important to take inter-run calibration into account. For
290 qPCR assays this is of unique importance because the relationship between quantification cycle and relative
291 quantity is run dependent³⁷. The baseline correction of each qPCR run is depending on the total number of samples
292 and the fluorescence intensity³⁷. Here, we provided experimental proof that the use of two inter-run calibrators
293 reduced the intermediate precision between 8.07% and 16.29%.

294 A number of pre-analytical variables can affect the results of cfDNA measurement^{15,38}. As reviewed by Ungerer
295 et al.¹⁵ the influence of centrifugation speed is still discussed controversially, whereas a second centrifugation step
296 is recommended³⁸. Our results indicate that centrifugation at 600 x g compared to 2500 or 16.000 x g does not
297 relevantly influence cfDNA concentrations. The detectable differences were within the assay precision. Notably,
298 we avoided untarred centrifuges, and disturbances of the cell pellet during pipetting. Similar to other studies we
299 did not detect cfDNA changes after prolonged storage of EDTA whole blood samples to several hours^{39,40}.

300 According to the simpler, and less invasive sampling technique, capillary plasma samples are a reasonable sample
301 source, which can be collected more frequently. The comparison of venous and capillary samples shows high
302 congruence. Notably, repeatedly collected capillary samples show a higher variance of cfDNA concentrations
303 compared to venous samples, which is not related to assay imprecision (as indicated in Supplementary Fig. S7).
304 The reason is not clarified in detail, and the intra-individual variance needs further systematic evaluation.

305 Studies indicate that SLE patients show higher cfDNA concentrations compared to the healthy population, and
306 that cfDNA concentrations are related to disease activity^{12,41}. Exercise is recommended for the treatment of SLE
307 patients⁴². However, the kinetics of cfDNA after exercise has not been studied. After walking until exhaustion, the
308 studied SLE patients showed lower fold-changes compared to healthy subjects, which is likely related to exercise
309 intensity, time until exhaustion, and total energy expenditure^{7,14,43}. cfDNA concentrations normalized 60-90 min
310 after exercise in most of the patients (Fig. 4 and Fig. 5), showing no significant differences from the PRE cfDNA
311 values (Supplementary Tables S8 and S8). Since elevated cfDNA concentrations have been discussed to possibly
312 trigger enhanced inflammation⁴⁴, or the production of anti-ds-DNA antibodies⁵, low increases and a rapid decrease
313 are positive aspects of cfDNA kinetics in SLE patients. With the established time and costs efficient assay we
314 determined the cfDNA kinetics in exercising SLE patients for the first time, underlining that exercise does not has
315 a negative impact on the levels of cfDNA.

316

317 References

- 318 1. Bronkhorst, A. J., Ungerer, V. & Holdenrieder, S. The emerging role of cell-free DNA as a molecular
319 marker for cancer management. *Biomol. Detect. Quantif.* **17**, 100087 (2019).
- 320 2. Duvvuri, B. & Lood, C. Cell-Free DNA as a Biomarker in Autoimmune Rheumatic Diseases. *Front.*
321 *Immunol.* **10**, 502 (2019).
- 322 3. Tan, E. M., Schur, P. H., Carr, R. I. & Kunkel, H. G. Deoxybonucleic acid (DNA) and antibodies to DNA
323 in the serum of patients with systemic lupus erythematosus. *J. Clin. Invest.* **45**, 1732–1740 (1966).
- 324 4. Sisirak, V. *et al.* Digestion of Chromatin in Apoptotic Cell Microparticles Prevents Autoimmunity. *Cell*
325 **166**, 88–101 (2016).
- 326 5. Bai, Y., Tong, Y., Liu, Y. & Hu, H. Self-dsDNA in the pathogenesis of systemic lupus erythematosus.
327 *Clin. Exp. Immunol.* **191**, 1–10 (2018).
- 328 6. Rekvig, O. P. The dsDNA, Anti-dsDNA Antibody, and Lupus Nephritis: What We Agree on, What Must
329 Be Done, and What the Best Strategy Forward Could Be. *Front. Immunol.* **10**, (2019).
- 330 7. Beiter, T., Fragasso, A., Hudemann, J., Nieß, A. M. & Simon, P. Short-Term Treadmill Running as a
331 Model for Studying Cell-Free DNA Kinetics In Vivo. *Clin. Chem.* **57**, 633–636 (2011).
- 332 8. Breitbach, S., Sterzing, B., Magallanes, C., Tug, S. & Simon, P. Direct measurement of cell-free DNA
333 from serially collected capillary plasma during incremental exercise. *J. Appl. Physiol.* **117**, 119–130
334 (2014).

- 335 9. Dennis Lo, Y. M. *et al.* Rapid clearance of fetal DNA from maternal plasma. *Am. J. Hum. Genet.* **64**, 218–
336 224 (1999).
- 337 10. O’Dwyer, T., Durcan, L. & Wilson, F. Exercise and physical activity in systemic lupus erythematosus: A
338 systematic review with meta-analyses. *Semin. Arthritis Rheum.* **47**, 204–215 (2017).
- 339 11. Fatouros, I. G. *et al.* Cell-Free Plasma DNA as a Novel Marker of Aseptic Inflammation Severity Related
340 to Exercise Overtraining. *Clin. Chem.* **52**, 1820–1824 (2006).
- 341 12. Tug, S. *et al.* Correlation between cell free DNA levels and medical evaluation of disease progression in
342 systemic lupus erythematosus patients. *Cell. Immunol.* **292**, 32–39 (2014).
- 343 13. Meddeb, R., Pisareva, E. & Thierry, A. R. Guidelines for the Preanalytical Conditions for Analyzing
344 Circulating Cell-Free DNA. *Clin. Chem.* **65**, 623–633 (2019).
- 345 14. Breitbach, S. *et al.* Direct Quantification of Cell-Free, Circulating DNA from Unpurified Plasma. *PLoS*
346 *One* **9**, e87838 (2014).
- 347 15. Ungerer, V., Bronkhorst, A. J. & Holdenrieder, S. Preanalytical variables that affect the outcome of cell-
348 free DNA measurements. *Crit. Rev. Clin. Lab. Sci.* **57**, 484–507 (2020).
- 349 16. Umetani, N. *et al.* Increased Integrity of Free Circulating DNA in Sera of Patients with Colorectal or
350 Periampullary Cancer: Direct Quantitative PCR for ALU Repeats. *Clin. Chem.* **52**, 1062–1069 (2006).
- 351 17. Ovchinnikov, I., Rubin, A. & Swergold, G. D. Tracing the LINEs of human evolution. *Proc. Natl. Acad.*
352 *Sci.* **99**, 10522–10527 (2002).
- 353 18. ISO. Biotechnology — Requirements for evaluating the performance of quantification methods for nucleic
354 acid target sequences — qPCR and dPCR. ISO 20395:2019(en).
355 <https://www.iso.org/obp/ui#iso:std:iso:20395:ed-1:v1:en> (Accessed August 2020).
- 356 19. Breitbach, S. *et al.* Direct Quantification of Cell-Free, Circulating DNA from Unpurified Plasma. *PLoS*
357 *One* **9**, e87838 (2014).
- 358 20. Jiang, P. & Lo, Y. M. D. The Long and Short of Circulating Cell-Free DNA and the Ins and Outs of
359 Molecular Diagnostics. *Trends Genet.* **32**, 360–371 (2016).
- 360 21. Holdenrieder, S., Burges, A., Reich, O., Spelsberg, F. W. & Stieber, P. DNA Integrity in Plasma and Serum
361 of Patients with Malignant and Benign Diseases. *Ann. N. Y. Acad. Sci.* **1137**, 162–170 (2008).
- 362 22. Meddeb, R. *et al.* Quantifying circulating cell-free DNA in humans. *Sci. Rep.* **9**, 5220 (2019).
- 363 23. Boedecker, S. C. *et al.* Twelve-Week Internet-Based Individualized Exercise Program in Adults With
364 Systemic Lupus Erythematosus: Protocol for a Randomized Controlled Trial. *JMIR Res. Protoc.* **9**, e18291
365 (2020).
- 366 24. Lacroix, R. *et al.* Impact of pre-analytical parameters on the measurement of circulating microparticles:
367 towards standardization of protocol. *J. Thromb. Haemost.* **10**, 437–46 (2012).
- 368 25. Piovesan, A. *et al.* On the length, weight and GC content of the human genome. *BMC Res. Notes* (2019).
369 doi:10.1186/s13104-019-4137-z
- 370 26. Forootan, A. *et al.* Methods to determine limit of detection and limit of quantification in quantitative real-
371 time PCR (qPCR). *Biomol. Detect. Quantif.* **12**, 1–6 (2017).
- 372 27. Bustin, S. A. *et al.* The MIQE Guidelines: Minimum Information for Publication of Quantitative Real-
373 Time PCR Experiments. *Clin. Chem.* **55**, 611–622 (2009).
- 374 28. Pierson-Perry, J. F. *et al.* *Evaluation of Detection Capability for Clinical Laboratory Measurement*
375 *Procedures; Approved Guidance-Second Edition. EPI7-A2. Clinical and Laboratory Standards Institute*
376 (2012).
- 377 29. U.S. Department of Health and Human Services Food and Drug Administration Center for Drug
378 Evaluation and Research. *Bioanalytical Method Validation: Guidance for Industry. Bioanalytical Method*
379 *Validation: Guidance for Industry* (2018).
- 380 30. Rapp, D., Scharhag, J., Wagenpfeil, S. & Scholl, J. Reference values for peak oxygen uptake: cross-
381 sectional analysis of cycle ergometry-based cardiopulmonary exercise tests of 10 090 adult German

- 382 volunteers from the Prevention First Registry. *BMJ Open* **8**, e018697 (2018).
- 383 31. Meddeb, R., Pisareva, E. & Thierry, A. R. Guidelines for the Preanalytical Conditions for Analyzing
384 Circulating Cell-Free DNA. *Clin. Chem.* **65**, 623–633 (2019).
- 385 32. Thierry, A. R., El Messaoudi, S., Gahan, P. B., Anker, P. & Stroun, M. Origins, structures, and functions
386 of circulating DNA in oncology. *Cancer Metastasis Rev.* **35**, 347–376 (2016).
- 387 33. Lehmann-Werman, R. *et al.* Identification of tissue-specific cell death using methylation patterns of
388 circulating DNA. *Proc. Natl. Acad. Sci. U. S. A.* **113**, E1826–E1834 (2016).
- 389 34. Milosevic, D. *et al.* Applying Standard Clinical Chemistry Assay Validation to Droplet Digital PCR
390 Quantitative Liquid Biopsy Testing. *Clin. Chem.* **64**, 1732–1742 (2018).
- 391 35. FDA. *Bioanalytical Method Validation Guidance for Industry.* (2018).
- 392 36. Fleischhacker, M. *et al.* Methods for isolation of cell-free plasma DNA strongly affect DNA yield. *Clin.*
393 *Chim. Acta* (2011). doi:10.1016/j.cca.2011.07.011
- 394 37. Hellemans, J., Mortier, G., De Paepe, A., Speleman, F. & Vandesompele, J. qBase relative quantification
395 framework and software for management and automated analysis of real-time quantitative PCR data.
396 *Genome Biol.* **8**, R19 (2007).
- 397 38. Fleischhacker, M. & Schmidt, B. Pre-analytical issues in liquid biopsy-where do we stand? *J. Lab. Med.*
398 **44**, 117–142 (2020).
- 399 39. Lam, N. Y. L., Rainer, T. H., Chiu, R. W. K. & Lo, Y. M. D. EDTA Is a Better Anticoagulant than Heparin
400 or Citrate for Delayed Blood Processing for Plasma DNA Analysis. *Clin. Chem.* **50**, 256–257 (2004).
- 401 40. Kang, Q. *et al.* Comparative analysis of circulating tumor DNA stability In K3EDTA, Streck, and CellSave
402 blood collection tubes. *Clin. Biochem.* **49**, 1354–1360 (2016).
- 403 41. Xu, Y. *et al.* High levels of circulating cell-free DNA are a biomarker of active SLE. *Eur. J. Clin. Invest.*
404 **48**, e13015 (2018).
- 405 42. Fanouriakis, A. *et al.* 2019 update of the EULAR recommendations for the management of systemic lupus
406 erythematosus. *Ann. Rheum. Dis.* **78**, 736–745 (2019).
- 407 43. Tug, S. *et al.* Exploring the Potential of Cell-Free-DNA Measurements After an Exhaustive Cycle-
408 Ergometer Test as a Marker for Performance-Related Parameters. *Int. J. Sports Physiol. Perform.* **12**, 597–
409 604 (2017).
- 410 44. Korabecna, M. *et al.* Cell-free DNA in plasma as an essential immune system regulator. *Sci. Rep.* **10**,
411 17478 (2020).

412

413 **Funding statement**

414 The study was funded by the internal research funding of the Johannes Gutenberg-University of Mainz. The
415 funders had no role in study design, data collection and analysis, decision to publish, or preparation of the
416 manuscript.

417 **Data availability**

418 All data are available from the corresponding author on reasonable request.

419 **Competing interests**

420 The authors have declared no competing interest.