

# SARS-CoV-2 reinfection in a cohort of 43,000 antibody-positive individuals followed for up to 35 weeks

Laith J. Abu-Raddad,<sup>1,2,3\*</sup> Hiam Chemaitelly,<sup>1,2</sup> Peter Coyle,<sup>4</sup> Joel A. Malek,<sup>5,6</sup> Ayeda A. Ahmed,<sup>5</sup> Yasmin A. Mohamoud,<sup>5</sup> Shameem Younuskunju,<sup>5</sup> Houssein H. Ayoub,<sup>7</sup> Zaina Al Kanaani,<sup>4</sup> Einas Al Kuwari,<sup>4</sup> Adeel A. Butt,<sup>3,4</sup> Andrew Jeremijenko,<sup>4</sup> Anvar Hassan Kaleeckal,<sup>4</sup> Ali Nizar Latif,<sup>4</sup> Riyazuddin Mohammad Shaik,<sup>4</sup> Hanan F. Abdul Rahim,<sup>8</sup> Gheyath K. Nasrallah,<sup>9,10</sup> Hadi M. Yassine,<sup>9,10</sup> Mohamed G. Al Kuwari,<sup>11</sup> Hamad Eid Al Romaihi,<sup>12</sup> Mohamed H. Al-Thani,<sup>12</sup> Abdullatif Al Khal,<sup>4</sup> and Roberto Bertollini<sup>12</sup>

<sup>1</sup>*Infectious Disease Epidemiology Group, Weill Cornell Medicine-Qatar, Cornell University, Doha, Qatar*

<sup>2</sup>*World Health Organization Collaborating Centre for Disease Epidemiology Analytics on HIV/AIDS, Sexually Transmitted Infections, and Viral Hepatitis, Weill Cornell Medicine-Qatar, Cornell University, Qatar Foundation – Education City, Doha, Qatar*

<sup>3</sup>*Department of Population Health Sciences, Weill Cornell Medicine, Cornell University, New York, New York, USA*

<sup>4</sup>*Hamad Medical Corporation, Doha, Qatar*

<sup>5</sup>*Genomics Laboratory, Weill Cornell Medicine-Qatar, Cornell University, Doha, Qatar*

<sup>6</sup>*Department of Genetic Medicine, Weill Cornell Medicine-Qatar, Cornell University, Doha, Qatar*

<sup>7</sup>*Department of Mathematics, Statistics, and Physics, Qatar University, Doha, Qatar*

<sup>8</sup>*College of Health Sciences, QU Health, Qatar University, Doha, Qatar*

<sup>9</sup>*Biomedical Research Center, Member of QU Health, Qatar University, Doha, Qatar*

<sup>10</sup>*Department of Biomedical Science, College of Health Sciences, Member of QU Health, Qatar University, Doha, Qatar*

<sup>11</sup>*Primary Health Care Corporation, Doha, Qatar*

<sup>12</sup>*Ministry of Public Health, Doha, Qatar*

**Word count:** Abstract: 246 words, Main Text: 3,014 words.

**Number of figures:** 3. **Number of tables:** 2; **Number of boxes:** 1.

**Running head:** Reinfection with SARS-CoV-2.

**Keywords:** SARS-CoV-2; epidemiology; reinfection; immunity; genetics.

\* Address reprints requests or correspondence to Professor Laith J. Abu-Raddad, Infectious Disease Epidemiology Group, World Health Organization Collaborating Centre for Disease Epidemiology Analytics on HIV/AIDS, Sexually Transmitted Infections, and Viral Hepatitis, Weill Cornell Medicine - Qatar, Qatar Foundation - Education City, P.O. Box 24144, Doha, Qatar. Telephone: +(974) 4492-8321. Fax: +(974) 4492-8333. E-mail: [lja2002@qatar-med.cornell.edu](mailto:lja2002@qatar-med.cornell.edu).

## ABSTRACT

**Background:** Reinfection with the severe acute respiratory syndrome coronavirus 2 (SARS-CoV-2) has been documented, raising public health concerns. Risk and incidence rate of SARS-CoV-2 reinfection were assessed in a large cohort of antibody-positive persons in Qatar.

**Methods:** All SARS-CoV-2 antibody-positive persons with a PCR-positive swab  $\geq 14$  days after the first-positive antibody test were individually investigated for evidence of reinfection. Viral genome sequencing was conducted for paired viral specimens to confirm reinfection.

**Results:** Among 43,044 anti-SARS-CoV-2 positive persons who were followed for a median of 16.3 weeks (range: 0-34.6), 314 individuals (0.7%) had at least one PCR positive swab  $\geq 14$  days after the first-positive antibody test. Of these individuals, 129 (41.1%) had supporting epidemiological evidence for reinfection. Reinfection was next investigated using viral genome sequencing. Applying the viral-genome-sequencing confirmation rate, the risk of reinfection was estimated at 0.10% (95% CI: 0.08-0.11%). The incidence rate of reinfection was estimated at 0.66 per 10,000 person-weeks (95% CI: 0.56-0.78). Incidence rate of reinfection versus month of follow-up did not show any evidence of waning of immunity for over seven months of follow-up. Efficacy of natural infection against reinfection was estimated at  $>90\%$ . Reinfections were less severe than primary infections. Only one reinfection was severe, two were moderate, and none were critical or fatal. Most reinfections (66.7%) were diagnosed incidentally through random or routine testing, or through contact tracing.

**Conclusions:** Reinfection is rare. Natural infection appears to elicit strong protection against reinfection with an efficacy  $>90\%$  for at least seven months.

## INTRODUCTION

The severe acute respiratory syndrome coronavirus 2 (SARS-CoV-2) pandemic has caused extensive disease and death, with heavy social and economic losses [1-4]. In addition to the risk of first infection, reinfection during this prolonged pandemic has raised additional public health concerns [5-9].

We recently assessed the risk and incidence rate of documented reinfection in a cohort of 130,266 SARS-CoV-2 polymerase chain reaction (PCR)-confirmed infected persons in Qatar [5], a country of 2.8 million population [10, 11] that experienced a large SARS-CoV-2 epidemic [12-16]. Benefiting from a centralized data-capture system for nationwide SARS-CoV-2 PCR testing and using viral genome sequencing, we quantified the risk of reinfection at ~2 reinfections per 10,000 infected persons [5]. Incidence rate of reinfection was estimated at 0.36 (95% CI: 0.28-0.47) per 10,000 person-weeks [5].

Serological testing for SARS-CoV-2 infection has been expanding in Qatar during the last few months [14, 16, 17]. The objective of the present study was to quantify the risk and incidence rate of documented reinfection in a cohort of 43,044 persons who had a *laboratory-confirmed, anti-SARS-CoV-2 positive result*, regardless of whether these persons had ever had a diagnosed PCR-confirmed infection. Persons with a *PCR-confirmed* infection could, in principle, be *biologically* different from persons with an *antibody-confirmed* infection, as the former population is more likely to have experienced symptomatic or even serious primary infection, while the latter population is more likely to have experienced an asymptomatic or mild primary infection that may never have been diagnosed. Moreover, some of those with PCR-confirmed infection may not have developed detectable antibodies [5, 7].

The present study thus provides an independent assessment of the risk of reinfection in a *biologically* different population from that of PCR-confirmed infected persons. A major strength of the present study is the long follow-up time of each antibody-positive person in this cohort, which had a median of 16.3 weeks for a total cohort follow-up time of 610,832.6 person-weeks, comparable to or greater than the follow-up time in COVID-19 vaccine trials [18-20]. The study therefore allows assessment of reinfection for more than seven months after primary infection, and provides empirical evidence for possible effects of any waning of immunity.

## **METHODS**

### **Sources of data**

We analyzed the centralized and standardized national anti-SARS-CoV-2 serological testing database compiled at Hamad Medical Corporation (HMC), the main public healthcare provider and the nationally designated provider for Coronavirus Disease 2019 (COVID-19) healthcare needs. The database covers essentially all serological testing for SARS-CoV-2 conducted in Qatar, including both testing done on residual blood specimens collected for routine clinical care from attendees at HMC [17] and during a series of population-based serological surveys [14, 16].

The antibody database was linked to the HMC national SARS-CoV-2 PCR testing and COVID-19 hospitalization and severity database [21]. The latter includes records for all SARS-CoV-2 PCR testing conducted in Qatar since the start of the epidemic. The database also includes all COVID-19 hospitalizations and their infection severity classifications, assessed through individual chart reviews by trained medical personnel following World Health Organization (WHO) guidelines [22]. Antibody data were also linked to the centralized COVID-19 death registry, which includes all COVID-19 deaths assessed per WHO guidelines [23].

## Laboratory methods

Antibodies against SARS-CoV-2 in serological samples were detected using the Roche Elecsys<sup>®</sup> Anti-SARS-CoV-2 assay (Roche, Switzerland), an electrochemiluminescence immunoassay that uses a recombinant protein representing the nucleocapsid (N) antigen for antibody binding.

Results were interpreted according to the manufacturer's instructions (reactive: optical density (antibody titer) cutoff index  $\geq 1.0$  vs. non-reactive: optical density cutoff index  $< 1.0$ ).

Nasopharyngeal and/or oropharyngeal swabs (Huachenyang Technology, China) were collected for PCR testing and placed in Universal Transport Medium (UTM). Aliquots of UTM were: extracted on the QIASymphony platform (QIAGEN, USA) and tested with real-time reverse-transcription PCR (RT-qPCR) using TaqPath<sup>™</sup> COVID-19 Combo Kits (Thermo Fisher Scientific, USA) on ABI 7500 FAST (Thermo Fisher, USA). Samples were extracted using a custom protocol [24] on a Hamilton Microlab STAR (Hamilton, USA) and tested using AccuPower SARS-CoV-2 Real-Time RT-PCR Kit (Bioneer, Korea) on ABI 7500 FAST, or loaded directly into a Roche cobas<sup>®</sup> 6800 system and assayed with a cobas<sup>®</sup> SARS-CoV-2 Test (Roche, Switzerland). The first assay targets the viral S, N, and ORF1ab regions. The second targets the virus' RdRp and E-gene regions, and the third targets the ORF1ab and E-gene regions.

All testing was conducted at HMC Central Laboratory or at Sidra Medicine Laboratory, following standardized protocols.

## Suspected reinfection case eligibility and classification

All SARS-CoV-2 antibody-positive persons in Qatar with at least one PCR-positive swab that occurred  $\geq 14$  days *after* the first-positive antibody test were considered as *suspected cases* of

reinfection. These were classified as showing either *good* evidence, *some* evidence, or *weak* (or *no*) evidence for reinfection based on criteria applied to each case (Box 1). We defined the *reinfection swab* as the first-positive PCR swab that was identified  $\geq 14$  days after the first-positive antibody test. The 14-day cutoff was incorporated to exclude cases in which antibody testing and PCR testing were done around the same time as part of clinical care of COVID-19 patients—a PCR-positive swab within few days of an antibody-positive test is likely to reflect active primary infection under clinical consideration rather than a reinfection.

Suspected reinfection cases with a PCR cycle threshold (Ct) value  $\leq 30$  for the reinfection swab (suggestive of a recent active infection) [25-27] and who had *not* had a PCR-positive swab for 45 days preceding the reinfection swab (to rule out persisting PCR positivity due to non-viable virus fragments) [5, 25, 28-30], were considered as showing *good evidence for reinfection*.

Suspected reinfection cases who had not had a PCR-positive swab for 45 days preceding the reinfection swab, but whose Ct value for the reinfection swab was  $>30$ , were considered as showing *some evidence for reinfection*.

Suspected reinfection cases who *had* a PCR-positive swab within the 45 days preceding the reinfection swab were considered as showing *weak* (or *no*) evidence for reinfection, as they are likely to reflect prolonged PCR positivity of the primary infection rather than a reinfection [5, 25, 28-30].

### **Viral genome sequencing and analysis**

For a subset of investigated reinfection cases with *good* or *some evidence for reinfection*, there were records indicating prior diagnosis of the primary infection. Viral genome sequencing was thus conducted to confirm reinfection in this subset of cases whenever it was possible to retrieve

both, the first-infection PCR-positive swab and the reinfection swab. Details of viral genome sequencing methods are provided in Supplementary Text S1.

### **Reinfection risk and rate**

*Risk* of documented reinfection was assessed by quantifying the proportion of cases with *good or some evidence for reinfection* among all eligible anti-SARS-CoV-2 positive cases with an antibody-positive test  $\geq 14$  days from end-of-study censoring (excluding cases whose residual blood was tested for antibodies after death).

*Incidence rate* of documented reinfection was calculated by dividing the number of cases with *good or some evidence for reinfection* by the number of person-weeks contributed by all anti-SARS-CoV-2 positive cases. The follow-up person-time was calculated starting 14 days after the first-positive antibody test until the reinfection swab, all-cause death, or end-of-study censoring (set on December 31, 2020).

Adjusted estimates for the risk of reinfection and the incidence rate of reinfection were derived by applying the confirmation rate obtained from viral genome sequencing analysis.

### **Ethical approval**

This study was approved by the HMC and Weill Cornell Medicine-Qatar Institutional Review Boards.

## **RESULTS**

### **Epidemiological analysis**

The process for selecting suspected cases of SARS-CoV-2 reinfection is shown in Figure 1, which summarizes results of their reinfection status evaluation. Of 192,984 persons tested for anti-SARS-CoV-2 using blood specimens collected between April 16-December 31, 2020,

149,934 had negative test results, and were excluded from further analysis. Six of the remaining 43,050 antibody-positive persons were also excluded because their residual blood was tested for SARS-CoV-2 antibodies after death. This yielded a retrospective cohort of 43,044 antibody-positive persons for whom possible reinfection was assessed.

The cohort included 8,953 (20.8%) women and 34,091 men (79.2%) of 158 nationalities, broadly representative of the resident population of Qatar [10, 31]. Median age was 35 years for women (interquartile range (IQR): 28-45 years) and 38 years for men (IQR: 31-47 years). Only 19,976 (46.4%) of these persons had ever had a PCR-positive swab *preceding* their first-positive antibody test. Individual time of follow-up ranged between 0 days and 34.6 weeks, with a median of 16.3 weeks.

Only 314 persons had a PCR-positive swab  $\geq 14$  days after the first-positive antibody test, and thus qualified for inclusion in the analysis. There were 1,633 swabs (915 positive and 718 negative) collected from these 314 persons, and of these, 1,099 (551 positive and 548 negative) were collected *after* the first-positive antibody test.

Investigation of these 314 suspected cases of reinfection yielded 32 cases with *good* evidence for reinfection ( $Ct \leq 30$  for reinfection swab), 97 cases with *some* evidence ( $Ct > 30$  for reinfection swab), while evidence was *weak* for the remaining 185 cases.

Characteristics of the 129 cases with *good* or *some* evidence for reinfection are shown in Table 1. These individuals had a median age of 37 years (range: <1-72 years) and included 92 men (71.3%). The median time between the *first-positive antibody* test and the *reinfection* swab was 52 days (range: 15-212 days). The median Ct value of the reinfection swab was 32.9 (range: 13.9-38.3). Slightly over a third of cases were diagnosed based on clinical suspicion (n=34; 26.4%) or individual request (n=9; 7.0%), while the rest (n=86) were identified incidentally



either through random PCR-testing campaigns/surveys (n=47; 36.4%), through healthcare routine testing (n=18; 14.0%), through contact tracing (n=15; 11.6%), or at a port of entry (n=6; 4.7%).

At the time of the reinfection swab, eight cases had records in the severity database. One of these was classified as “severe” and two as “moderate” per WHO classification [22], while the other five were classified as “asymptomatic.” At time of primary infection, 14 cases had records in the severity database, one of whom was classified as “critical”, three as “severe”, five as “moderate”, two as “mild”, and three as “asymptomatic.” For the rest of the reinfection cases, no severity classification was conducted because of minimal or no symptoms to warrant a clinical assessment. For the eight asymptomatic cases above that *had* a severity assessment, the assessment was conducted because of non-COVID-related hospitalization. No deaths were recorded for any of these reinfection cases.

### **Confirmation of reinfection through viral genome sequencing**

Among the 129 cases with *good* or *some* evidence for reinfection, 62 had records indicating prior diagnosis of a primary infection. Paired specimens of the first-infection PCR-positive swab and the reinfection swab were retrieved in 23 cases. Viral genome sequencing results are summarized in Table 2. Detailed analysis for each genome pair is shown in Figure 2 and Supplementary Figures S1-S2.

There was insufficient evidence to warrant interpretation for seven sample pairs because of low genome quality. For seven additional pairs, there were one to several changes of allele frequency indicative at best of a shifting balance of quasi-species, and thus no evidence for reinfection. For four pairs, there was strong evidence for *no reinfection* as both genomes were of high quality, yet no differences were found. Three of these cases had a Ct <30 for the reinfection swab, indicating

persistent active infection (Table 1). Two of these cases were reported earlier as part of a case report documenting the existence of prolonged infections [32].

Meanwhile, for one pair, there were few changes of allele frequency offering *supporting evidence for reinfection*. For four other pairs, there were multiple clear changes of allele frequency indicating *strong evidence for reinfection*. One of the latter pairs also documented the presence of the D614G mutation (23403bp A>G) at the reinfection swab—a variant that has progressively replaced the original D614 form [33, 34].

In summary, for the 16 cases where viral genome sequencing evidence was available, five cases were confirmed as reinfections, a confirmation rate of 31.3%. This confirmation rate was similar to that found in our earlier study of reinfection among those with a PCR-confirmed infection at 33.3% [5].

### **Assessment of risk and incidence rate of reinfection**

Applying the confirmation rate obtained through viral genome sequencing yielded a risk of documented reinfection of 0.10% (95% confidence interval (CI): 0.08-0.11%)—that is 31.3% of 129 reinfections in the cohort of 42,272 anti-SARS-CoV-2 positive persons with an antibody-positive test  $\geq 14$  days from end-of-study censoring.

The incidence rate of documented reinfection was estimated at 0.66 per 10,000 person-weeks (95% CI: 0.56-0.78). That is 31.3% of 129 reinfection events in a follow-up person-time of 610,832.5 person-weeks.

Figure 3 shows the incidence rate of documented reinfection versus month of follow-up in this cohort of antibody-positive persons. There was evidence for a decreasing trend in the incidence

rate of reinfection with each additional month of follow-up (Mantel-Haenszel trend analysis p-value: <0.001).

## DISCUSSION

The results provide concrete evidence for the presence of reinfection in some individuals with detectable antibodies for SARS-CoV-2 infection, even in some with high antibody titers (Table 1). However, the risk of documented reinfection was rare, at ~1 per 1,000 infected persons, at least for a few months after the first antibody-positive test. There was also no evidence that antibody-positive persons experienced any waning of protective immunity over time, as the incidence rate of reinfection versus month of follow-up did not show an increasing trend over seven months following the first antibody-positive test (Figure 3). To the contrary, there was a trend of decreasing incidence rate, possibly explained by the (very) slowly declining incidence rate in the wider population of Qatar over the last six months [15, 35], or possibly by strengthening of protective immunity due to repeated exposures that did not lead to established infection. Notably, a recent study from Qatar indicated an association between higher antibody titers and repeated exposures to the virus [17]. Further follow up of this cohort of antibody-positive persons over time may allow a more long-term assessment of the persistence of protection against reinfection.

Remarkably, the incidence rate of reinfection found here for those with *antibody-confirmed* infection at ~1 per 10,000 person-weeks is very similar to that found for those with *PCR-confirmed* infection, as reported in our earlier reinfection study [5]. This suggests that these two populations are *functionally* similar. Evidence of exposure to SARS-CoV-2, regardless of the biomarker used to assess infection, appears sufficient to indicate protection against reinfection.

These findings are striking, as the epidemic in Qatar has been intense, with half of the population estimated to have acquired this infection at some point since its introduction into Qatar early in 2020 [14-17, 35]. It is highly probable that a proportion of the population has been repeatedly exposed to SARS-CoV-2, but such re-exposures did not lead to more than a limited number of documentable reinfections. Other lines of evidence also support a low frequency of reinfection. The epidemic in Qatar grew rapidly and declined rapidly [15, 35], consistent with a susceptible-infected-recovered “SIR” epidemic dynamic in which infection elicits strong immunity against reinfection. No second wave has materialized since the epidemic peaked in May of 2020, despite easing of most restrictions [15, 35]. A recent study on health care workers in the United Kingdom also indicated lower incidence of infection in those antibody-positive [36], and a study of immunological memory in a cohort of COVID-19 patients indicated durability of the immune response for at least 6-8 months [37].

An indirect outcome of this study is a provisional estimate of the *efficacy of natural infection* against *reinfection*. The average incidence rate of SARS-CoV-2 infection in the population of Qatar (throughout the epidemic until the end of 2020) has been estimated using mathematical modeling at ~150 per 10,000 person-weeks [15]. With the incidence rate of reinfection assessed here and in our earlier reinfection study at ~1 per 10,000 person-weeks [5], the efficacy of natural infection against *documented* reinfection is estimated at  $1 - \frac{1}{150} \approx 99\%$ .

While this efficacy is estimated only against documented reinfection, it is possible to extend this estimate to factor undocumented reinfections. A nationwide population-based survey in Qatar found that only 9.3% (95% CI: 7.9-11.0%) of antibody-positive persons had a prior documented PCR-confirmed infection [14], suggesting that *undocumented* reinfections are perhaps ten-fold

higher than *documented* reinfections. Applying this adjustment, the efficacy of natural infection against both documented and undocumented reinfection is crudely estimated at  $1 - \frac{10 \times 1}{150} \approx 93\%$ —similar to the efficacy reported for two recently-developed COVID-19 vaccines [18, 19].

While one reinfection was severe, none were critical or fatal and a large proportion of reinfections were minimally symptomatic (if not asymptomatic) to the extent that they were discovered only incidentally, such as through contact tracing or random testing campaigns/surveys (Table 1). The severity of reinfection was also less than that of primary infection. These findings suggest that reinfections (when they rarely occur) appear well tolerated and no more symptomatic than primary infections.

This study has some limitations. By study design, primary infection was *indirectly* ascertained through serological testing, thereby including only a subset with documented PCR-confirmed primary infections. Having said so, serological testing was based on a high-quality, validated platform, the Roche platform, one of the best available and most extensively used and investigated commercial platforms, with a specificity of at least 99.8% [38, 39]. Thus, it is unlikely that misclassified antibody-positives could have biased our findings. Viral genome sequencing analysis was possible for only a subset of reinfections, either because primary infection was only identified through antibody testing with no record of earlier PCR testing, or because the reinfection swab could not be retrieved. Reinfections were confirmed by noting differences in the viral genome between the primary infection and the reinfection. While not likely, it is theoretically possible that these differences may have occurred due to within-host evolution of the virus, as in the context of a prolonged infection [32, 40]. The potential effect of

these limitations is likely an overestimation, rather than underestimation, of the incidence of reinfection, thereby affirming the conclusion of the rarity of reinfections.

In conclusion, SARS-CoV-2 reinfection was investigated in a large cohort of antibody-positive individuals who were followed for as long as 35 weeks. While the study documented some reinfections, they constitute a rare phenomenon, with natural infection eliciting protection against reinfection with an efficacy >90%. This points to development of robust immunity following primary infection, which lasts for at least seven months. These findings may suggest that prioritizing vaccination for those who are antibody-negative, as long as doses of the vaccine remain in short supply, could enhance the health, societal, and economic gains attained by vaccination.

## **Funding**

The authors are grateful for support from the Biomedical Research Program, the Biostatistics, Epidemiology, and Biomathematics Research Core, and the Genomics Core, all at Weill Cornell Medicine-Qatar, as well as for support provided by the Ministry of Public Health and Hamad Medical Corporation. The statements made herein are solely the responsibility of the authors.

## **Acknowledgements**

We thank Her Excellency Dr. Hanan Al Kuwari, Minister of Public Health, for her vision, guidance, leadership, and support. We also thank Dr. Saad Al Kaabi, Chair of the System Wide Incident Command and Control (SWICC) Committee for the COVID-19 national healthcare response, for his leadership, analytical insights, and for his instrumental role in enacting data information systems that made these studies possible. We further extend our appreciation to the SWICC Committee and the Scientific Reference and Research Taskforce (SRRT) members for their informative input, scientific technical advice, and enriching discussions. We also thank Dr. Mariam Abdulmalik, CEO of the Primary Health Care Corporation and the Chairperson of the Tactical Community Command Group on COVID-19, as well as members of this committee, for providing support to the teams that worked on the field surveillance. We further thank Dr. Nahla Afifi, Director of Qatar Biobank (QBB), Ms. Tasneem Al-Hamad, Ms. Eiman Al-Khayat and the rest of the QBB team for their unwavering support in retrieving and analyzing samples and in compiling and generating databases for COVID-19 infection, as well as Dr. Asmaa Al-Thani, Chairperson of the Qatar Genome Programme Committee and Board Vice Chairperson of QBB, for her leadership of this effort. We also acknowledge the dedicated efforts of the Clinical Coding Team and the COVID-19 Mortality Review Team, both at Hamad Medical Corporation, and the Surveillance Team at the Ministry of Public Health.

## **Author contributions**

LJA conceived and designed the study and led the statistical analyses. HC contributed to study design, performed the data analyses, and wrote the first draft of the article. JAM led the viral genome sequencing analyses and AAA, YAM, and SY conducted these analyses. All authors contributed to data collection and acquisition, database development, discussion and interpretation of the results, and to the writing of the manuscript. All authors have read and approved the final manuscript.

## **Competing interests**

We declare no competing interests.



## References

1. World Health Organization (WHO), *WHO Director-General's opening remarks at the media briefing on COVID-19 - 11 March 2020*. Available from: <https://www.who.int/dg/speeches/detail/who-director-general-s-opening-remarks-at-the-media-briefing-on-covid-19---11-march-2020>. Accessed on March 14, 2020. 2020.
2. De Walque D., et al., *How two tests can help contain COVID-19 and revive the economy*. Available from: <http://documents.worldbank.org/curated/en/766471586360658318/pdf/How-Two-Tests-Can-Help-Contain-COVID-19-and-Revive-the-Economy.pdf>. Accessed on April 16, 2020. Research & Policy Briefs, World Bank Malaysia Hub., 2020.
3. Kaplan J., Frias L., and McFall-Johnsen M., *A third of the global population is on coronavirus lockdown*. Available from: <https://www.businessinsider.com.au/countries-on-lockdown-coronavirus-italy-2020-3> Accessed on: April 25, 2020. Business Insider Australia, 2020.
4. Nicola, M., et al., *The socio-economic implications of the coronavirus pandemic (COVID-19): A review*. *Int J Surg*, 2020. **78**: p. 185-193.
5. Abu-Raddad, L.J., et al., *Assessment of the risk of SARS-CoV-2 reinfection in an intense re-exposure setting*. *Clinical Infectious Diseases*, 2020. ciaa1846. doi: 10.1093/cid/ciaa1846. .
6. Tillett, R.L., et al., *Genomic evidence for reinfection with SARS-CoV-2: a case study*. *Lancet Infect Dis*, 2020.
7. To, K.K., et al., *COVID-19 re-infection by a phylogenetically distinct SARS-coronavirus-2 strain confirmed by whole genome sequencing*. *Clin Infect Dis*, 2020.
8. Van Elslande, J., et al., *Symptomatic SARS-CoV-2 reinfection by a phylogenetically distinct strain*. *Clin Infect Dis*, 2020.
9. Prado-Vivar B., et al., *COVID-19 re-infection by a phylogenetically distinct SARS-CoV-2 variant, first confirmed event in South America*. SSRN. 2020; (published online Sept 8.) (preprint) <https://doi.org/10.2139/ssrn.3686174>.
10. Planning and Statistics Authority- State of Qatar, *Qatar Monthly Statistics*. Available from: <https://www.psa.gov.qa/en/pages/default.aspx>. Accessed on: may 26,2020. 2020.
11. Planning and Statistics Authority-State of Qatar, *The Simplified Census of Population, Housing & Establishments*. Available from: [https://www.psa.gov.qa/en/statistics/Statistical%20Releases/Population/Population/2018/Population\\_social\\_1\\_2018\\_AE.pdf](https://www.psa.gov.qa/en/statistics/Statistical%20Releases/Population/Population/2018/Population_social_1_2018_AE.pdf) Accessed on: April 2, 2020. 2019.
12. Abu-Raddad, L.J., et al., *Characterizing the Qatar advanced-phase SARS-CoV-2 epidemic*. medRxiv, 2020: p. 2020.07.16.20155317v2 (non-peer-reviewed preprint).
13. Al Kuwari, H.M., et al., *Epidemiological investigation of the first 5685 cases of SARS-CoV-2 infection in Qatar, 28 February–18 April 2020*. *BMJ Open*, 2020. **10**(10): p. e040428.
14. Al-Thani, M.H., et al., *Seroprevalence of SARS-CoV-2 infection in the craft and manual worker population of Qatar*. medRxiv, 2020: p. 2020.11.24.20237719 (non-peer-reviewed preprint).
15. Ayoub, H.H., et al., *Mathematical modeling of the SARS-CoV-2 epidemic in Qatar and its impact on the national response to COVID-19*. in press. URL: <https://www.medrxiv.org/content/medrxiv/early/2020/11/10/2020.11.08.20184663.full.pdf>, 2021.
16. Jeremijenko, A., et al., *Evidence for and level of herd immunity against SARS-CoV-2 infection: the ten-community study*. medRxiv, 2020: p. 2020.09.24.20200543 (non-peer-reviewed preprint).
17. Coyle, P.V., et al., *SARS-CoV-2 seroprevalence in the urban population of Qatar: An analysis of antibody testing on a sample of 112,941 individuals*. medRxiv, 2021: p. 2021.01.05.21249247.
18. Polack, F.P., et al., *Safety and Efficacy of the BNT162b2 mRNA Covid-19 Vaccine*. *N Engl J Med*, 2020.

19. Jackson, L.A., et al., *An mRNA Vaccine against SARS-CoV-2 - Preliminary Report*. N Engl J Med, 2020. **383**(20): p. 1920-1931.
20. Voysey, M., et al., *Safety and efficacy of the ChAdOx1 nCoV-19 vaccine (AZD1222) against SARS-CoV-2: an interim analysis of four randomised controlled trials in Brazil, South Africa, and the UK*. Lancet, 2020.
21. Hamad Medical Corporation, *National SARS-CoV-2 PCR testing, infection severity, and hospitalization database*. 2020.
22. World Health Organization, *Clinical management of COVID-19*. Available from: <https://www.who.int/publications-detail/clinical-management-of-covid-19>. Accessed on: May 31st 2020. 2020.
23. World Health Organization, *International guidelines for certification and classification (coding) of COVID-19 as cause of death*. Available from: [https://www.who.int/classifications/icd/Guidelines\\_Cause\\_of\\_Death\\_COVID-19-20200420-EN.pdf?ua=1](https://www.who.int/classifications/icd/Guidelines_Cause_of_Death_COVID-19-20200420-EN.pdf?ua=1). Document Number: WHO/HQ/DDI/DNA/CAT. Accessed on June 1, 2020. . 2020.
24. Kalikiri, M.K.R., et al., *High-throughput extraction of SARS-CoV-2 RNA from nasopharyngeal swabs using solid-phase reverse immobilization beads*. medRxiv, 2020: p. 2020.04.08.20055731.
25. Sethuraman, N., S.S. Jeremiah, and A. Ryo, *Interpreting Diagnostic Tests for SARS-CoV-2*. JAMA, 2020. **323**(22): p. 2249-2251.
26. Singanayagam, A., et al., *Duration of infectiousness and correlation with RT-PCR cycle threshold values in cases of COVID-19, England, January to May 2020*. Euro Surveill, 2020. **25**(32).
27. Drew, R.J., et al., *The importance of cycle threshold values in interpreting molecular tests for SARS-CoV-2*. Diagn Microbiol Infect Dis, 2020. **98**(3): p. 115130.
28. Wajnberg, A., et al., *Humoral response and PCR positivity in patients with COVID-19 in the New York City region, USA: an observational study*. Lancet Microbe, 2020. **1**(7): p. e283-e289.
29. Cha S. and Smith J., *Explainer: South Korean findings suggest 'reinfected' coronavirus cases are false positives*. Reuters. Available from: <https://www.reuters.com/article/us-health-coronavirus-southkorea-explain-idUSKBN22JOHR>. Accessed on: November 24, 2020, 2020.
30. Bo-gyung K., *Tests in recovered patients found false positives, not reinfections, experts say*. The Korea Herald. Available from: <http://www.koreaherald.com/view.php?ud=20200429000724>. Accessed on November 24, 2020, 2020.
31. Ministry of Interior-State of Qatar, *Population distribution by sex, age, and nationality: results of Kashef database*. 2020.
32. Abu-Raddad, L.J., et al., *Two prolonged viremic SARS-CoV-2 infections with conserved viral genome for two months*. Infect Genet Evol, 2020. **88**: p. 104684.
33. Korber, B., et al., *Tracking Changes in SARS-CoV-2 Spike: Evidence that D614G Increases Infectivity of the COVID-19 Virus*. Cell, 2020. **182**(4): p. 812-827 e19.
34. Grubaugh, N.D., W.P. Hanage, and A.L. Rasmussen, *Making Sense of Mutation: What D614G Means for the COVID-19 Pandemic Remains Unclear*. Cell, 2020. **182**(4): p. 794-795.
35. Seedat, S., et al., *SARS-CoV-2 infection hospitalization, severity, criticality, and fatality rates*. medRxiv 2020.11.29.20240416 (non-peer-reviewed preprint), 2020.
36. Lumley, S.F., et al., *Antibody Status and Incidence of SARS-CoV-2 Infection in Health Care Workers*. N Engl J Med, 2020.
37. Dan, J.M., et al., *Immunological memory to SARS-CoV-2 assessed for up to 8 months after infection*. Science, 2021.
38. The Roche Group, *Roche's COVID-19 antibody test receives FDA Emergency Use Authorization and is available in markets accepting the CE mark*. Available from: <https://www.roche.com/media/releases/med-cor-2020-05-03.htm>. Accessed on: June 5, 2020. 2020.

39. Public Health England, *Evaluation of Roche Elecsys AntiSARS-CoV-2 serology assay for the detection of anti-SARS-CoV-2 antibodies*. Available from: [https://assets.publishing.service.gov.uk/government/uploads/system/uploads/attachment\\_data/file/891598/Evaluation\\_of\\_Roche\\_Elecsys\\_anti\\_SARS\\_CoV\\_2\\_PHE\\_200610\\_v8.1\\_FINAL.pdf](https://assets.publishing.service.gov.uk/government/uploads/system/uploads/attachment_data/file/891598/Evaluation_of_Roche_Elecsys_anti_SARS_CoV_2_PHE_200610_v8.1_FINAL.pdf). Accessed on June 5, 2020. 2020.
40. European Centre for Disease Prevention and Control, *Rapid increase of a SARS-CoV-2 variant with multiple spike protein mutations observed in the United Kingdom – 20 December 2020*. Available from: <https://www.ecdc.europa.eu/sites/default/files/documents/SARS-CoV-2-variant-multiple-spike-protein-mutations-United-Kingdom.pdf>. Accessed on: January 7, 2021. 2020: ECDC: Stockholm.

**Box 1.** Classification of suspected cases of SARS-CoV-2 reinfection based on the strength of supporting epidemiological evidence.

Suspected cases of SARS-CoV-2 reinfection: All antibody-positive persons with at least one PCR-positive swab that occurred  $\geq 14$  days after the first-positive antibody test.

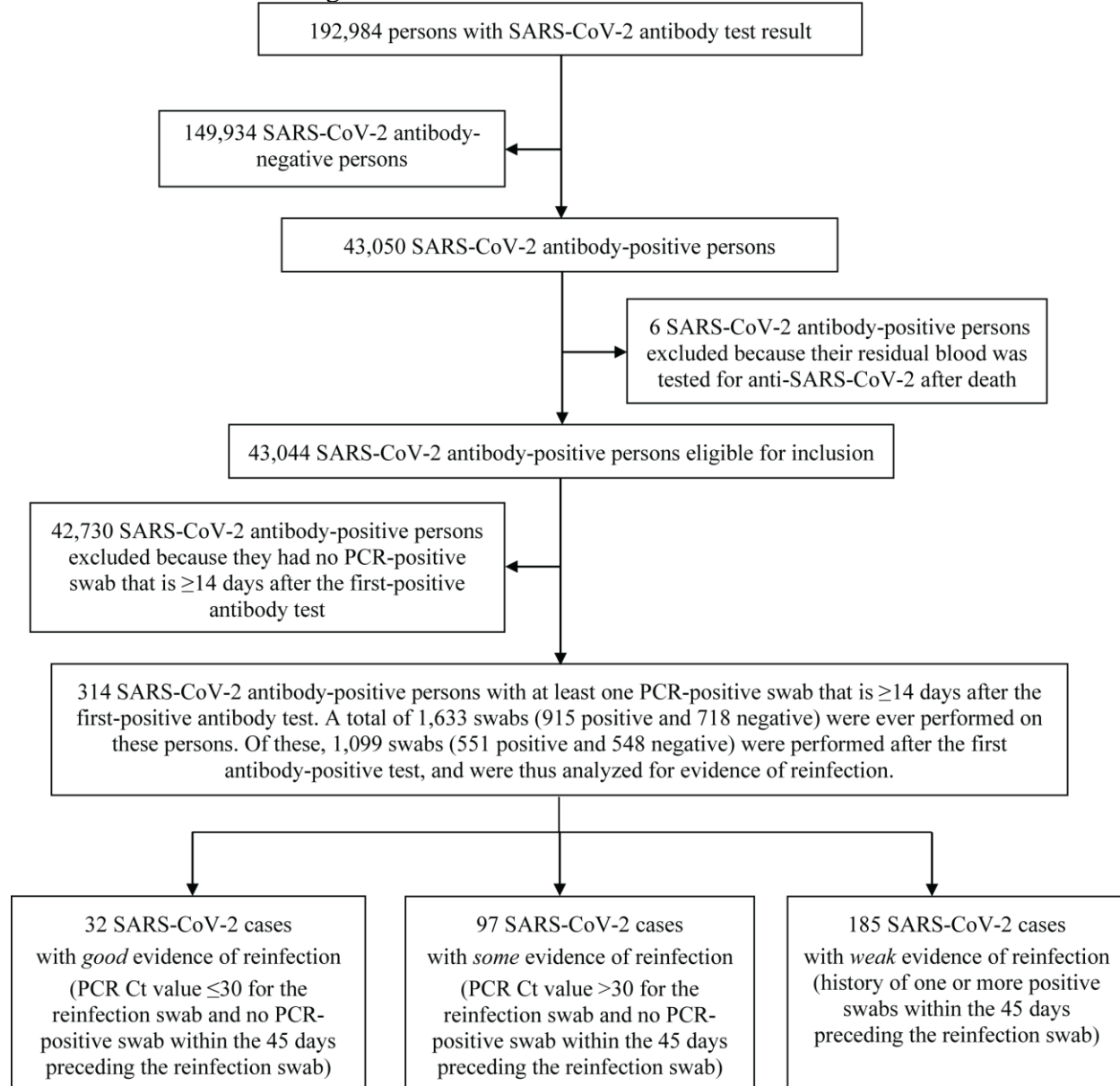
Good evidence for reinfection: Individuals who had a PCR-positive swab with a Ct value  $\leq 30$  at least 14 days after the first-positive antibody test and who had not had a PCR-positive swab within the 45 days preceding the reinfection swab.

Some evidence for reinfection: Individuals who had a PCR-positive swab with a Ct value  $> 30$  at least 14 days after the first-positive antibody test and who had not had a PCR-positive swab within the 45 days preceding the reinfection swab.

Weak evidence for reinfection: Individuals who had a PCR-positive swab at least 14 days after the first-positive antibody test, but who had one or more PCR-positive swabs within the 45 days preceding the reinfection swab.

Ct, cycle threshold; PCR, polymerase chain reaction.

**Figure 1.** Flow chart describing the selection process of suspected cases of SARS-CoV-2 reinfection and summarizing the results of their reinfection status' evaluation.



\*Ct, cycle threshold; PCR, polymerase chain reaction

**Table 1.** Characteristics of individuals classified as showing *good* or *some* evidence of reinfection.

ID#	Demography		Ab testing		PCR testing			Presence of symptoms
	Sex	Age group	First-positive Ab test date	Ab test optical density (Ab titers)	Reinfection swab date	Average Ct value*	Reason for swab	
<b>Good evidence for reinfection</b>								
1	Female	10-14	Day 0	1.1	Day 63	21.7	Clinical suspicion <sup>§</sup>	Yes
2	Female	20-24	Day 0	1.2	Day 91	16.6	Contact tracing	Yes
3	Male	50-54	Day 0	1.2	Day 49	22.0	Clinical suspicion <sup>§</sup>	Yes
4	Female	25-29	Day 0	1.4	Day 34	30.0	Individual request <sup>†</sup>	No
5	Female	40-44	Day 0	2.0	Day 75	22.2	Individual request <sup>†</sup>	Yes
6	Male	30-34	Day 0	2.1	Day 71	29.5	Clinical suspicion <sup>§</sup>	No <sup>††</sup>
7	Female	30-34	Day 0	2.3	Day 64	21.8	Clinical suspicion <sup>§</sup>	Yes
8	Female	40-44	Day 0	2.4	Day 36	20.5	Port of entry <sup>‡</sup>	No
9	Female	20-24	Day 0	2.7	Day 89	20.5	Contact tracing	No
10	Male	30-34	Day 0	3.0	Day 37	28.1	Clinical suspicion <sup>§</sup>	No <sup>††</sup>
11	Female	30-34	Day 0	3.0	Day 147	28.0	Clinical suspicion <sup>§</sup>	Yes
12	Male	40-44	Day 0	4.8	Day 25	22.6	Survey <sup>**</sup>	No
13	Male	35-39	Day 0	5.6	Day 85	23.3	Survey <sup>**</sup>	Not indicated
14	Male	30-34	Day 0	7.6	Day 63	29.5	Clinical suspicion <sup>§</sup>	No <sup>††</sup>
15	Female	40-44	Day 0	7.7	Day 75	23.4	Contact tracing	No
16	Female	30-34	Day 0	8.7	Day 122	13.9	Survey <sup>**</sup>	Not indicated
17	Male	55-59	Day 0	8.8	Day 45	26.4	Clinical suspicion <sup>§</sup>	No <sup>††</sup>
18	Male	50-54	Day 0	9.2	Day 126	29.8	Individual request <sup>†</sup>	No
19	Male	40-44	Day 0	11.3	Day 100	28.1	Clinical suspicion <sup>§</sup>	Yes
20	Male	35-39	Day 0	11.3	Day 68	28.1	Contact tracing	Not indicated
21	Male	35-39	Day 0	14.9	Day 53	28.8	Survey <sup>**</sup>	No
22	Female	0-9	Day 0	16.7	Day 74	29.5	Clinical suspicion <sup>§</sup>	Yes
23	Male	40-44	Day 0	22.2	Day 109	24.4	Port of entry <sup>‡</sup>	No
24	Female	25-29	Day 0	24.2	Day 40	29.5	Clinical suspicion <sup>§</sup>	No <sup>††</sup>
25	Female	20-24	Day 0	25.9	Day 36	29.1	Survey <sup>**</sup>	No
26	Male	65-69	Day 0	28.3	Day 21	27.7	Clinical suspicion <sup>§</sup>	Not indicated
27	Male	50-54	Day 0	32.0	Day 89	29.2	Healthcare routine testing	No
28	Male	65-69	Day 0	55.9	Day 58	29.4	Healthcare routine testing	No
29	Male	35-39	Day 0	75.4	Day 36	37.6	Survey <sup>**</sup>	No
30	Male	55-59	Day 0	85.6	Day 111	27.8	Survey <sup>**</sup>	No
31	Female	30-34	Day 0	60.1	Day 65	29.1	Individual request <sup>†</sup>	Yes
32	Male	20-24	Day 0	140.0	Day 17	30.0	Clinical suspicion <sup>§</sup>	No <sup>††</sup>
<b>Some evidence of reinfection</b>								
33	Female	40-44	Day 0	1.1	Day 33	36.2	Survey <sup>**</sup>	No
34	Male	20-24	Day 0	1.1	Day 30	NR	Contact tracing	No
35	Male	30-34	Day 0	1.2	Day 125	NR	Clinical suspicion <sup>§</sup>	Yes
36	Male	25-29	Day 0	1.6	Day 27	NR	Survey <sup>**</sup>	No
37	Male	30-34	Day 0	1.7	Day 56	NR	Clinical suspicion <sup>§</sup>	No <sup>††</sup>
38	Female	45-49	Day 0	2.0	Day 54	NR	Healthcare routine testing	No
39	Female	65-69	Day 0	2.0	Day 49	NR	Survey <sup>**</sup>	No
40	Male	60-64	Day 0	2.5	Day 88	NR	Healthcare routine testing	No
41	Female	40-44	Day 0	3.4	Day 65	NR	Survey <sup>**</sup>	Not indicated
42	Male	35-39	Day 0	3.7	Day 82	NR	Clinical suspicion <sup>§</sup>	No <sup>††</sup>
43	Male	45-49	Day 0	3.9	Day 36	30.5	Clinical suspicion <sup>§</sup>	No <sup>††</sup>
44	Female	20-24	Day 0	4.1	Day 19	35.9	Survey <sup>**</sup>	No
45	Female	45-49	Day 0	4.5	Day 63	31.0	Clinical suspicion <sup>§</sup>	Yes
46	Male	60-64	Day 0	5.2	Day 65	NR	Clinical suspicion <sup>§</sup>	No <sup>††</sup>
47	Male	50-54	Day 0	5.7	Day 80	31.3	Port of entry <sup>‡</sup>	No
48	Female	40-44	Day 0	6.2	Day 16	33.9	Port of entry <sup>‡</sup>	Yes
49	Male	35-39	Day 0	6.3	Day 118	31.5	Survey <sup>**</sup>	No
50	Male	25-29	Day 0	6.9	Day 88	32.8	Clinical suspicion <sup>§</sup>	No <sup>††</sup>

ID#	Demography		Ab testing		PCR testing			Presence of symptoms
	Sex	Age group	First-positive Ab test date	Ab test optical density (Ab titers)	Reinfection swab date	Average Ct value*	Reason for swab	
51	Male	50-54	Day 0	7.6	Day 28	36.4	Survey**	No
52	Male	50-54	Day 0	7.7	Day 103	NR	Contact tracing	No
53	Male	35-39	Day 0	7.9	Day 125	NR	Survey**	No
54	Male	40-44	Day 0	8.0	Day 73	34.1	Survey**	No
55	Female	25-29	Day 0	9.0	Day 15	34.2	Healthcare routine testing	Not indicated
56	Male	40-44	Day 0	9.9	Day 43	32.9	Survey**	No
57	Female	30-34	Day 0	10.8	Day 76	30.2	Clinical suspicion§	No††
58	Male	25-29	Day 0	11.0	Day 35	37.4	Survey**	Not indicated
59	Female	45-49	Day 0	11.0	Day 81	NR	Contact tracing	No
60	Male	50-54	Day 0	13.1	Day 90	NR	Contact tracing	No
61	Male	35-39	Day 0	13.2	Day 17	36.8	Healthcare routine testing	No
62	Male	40-44	Day 0	13.5	Day 212	NR	Survey**	No
63	Female	50-54	Day 0	14.5	Day 38	32.3	Survey**	No
64	Female	35-39	Day 0	14.8	Day 57	NR	Individual request†	No
65	Female	35-39	Day 0	15.8	Day 17	NR	Contact tracing	No
66	Male	45-49	Day 0	16.0	Day 99	NR	Healthcare routine testing	No
67	Female	30-34	Day 0	16.6	Day 18	36.2	Survey**	No
68	Male	60-64	Day 0	17.3	Day 50	31.0	Healthcare routine testing	No
69	Male	35-39	Day 0	17.4	Day 25	33.7	Survey**	Not indicated
70	Male	25-29	Day 0	17.8	Day 30	NR	Clinical suspicion§	No††
71	Male	35-39	Day 0	18.0	Day 48	NR	Survey**	Not indicated
72	Male	35-39	Day 0	19.7	Day 83	NR	Survey**	No
73	Male	15-19	Day 0	20.0	Day 35	34.5	Healthcare routine testing	No
74	Male	50-54	Day 0	20.1	Day 64	NR	Clinical suspicion§	No††
75	Male	40-44	Day 0	20.5	Day 52	NR	Clinical suspicion§	No††
76	Female	35-39	Day 0	20.9	Day 45	NR	Survey**	No
77	Male	20-24	Day 0	20.9	Day 98	34.9	Survey**	No
78	Male	45-49	Day 0	22.9	Day 31	34.7	Survey**	No
79	Male	50-54	Day 0	26.9	Day 31	35.3	Survey**	No
80	Male	20-24	Day 0	28.5	Day 56	33.0	Survey**	No
81	Male	30-34	Day 0	28.5	Day 45	34.9	Clinical suspicion§	Yes
82	Male	30-34	Day 0	30.4	Day 18	35.3	Survey**	Not indicated
83	Male	40-44	Day 0	31.9	Day 99	NR	Individual request†	No
84	Male	0-9	Day 0	32.8	Day 31	NR	Clinical suspicion§	Yes
85	Male	70-74	Day 0	33.2	Day 49	NR	Healthcare routine testing	No
86	Male	40-44	Day 0	35.8	Day 56	NR	Survey**	No
87	Male	30-34	Day 0	36.8	Day 53	NR	Survey**	No
88	Male	30-34	Day 0	37.9	Day 61	NR	Clinical suspicion§	Yes
89	Female	25-29	Day 0	38.3	Day 47	36.0	Survey**	No
90	Male	30-34	Day 0	39.6	Day 15	34.2	Contact tracing	No
91	Male	30-34	Day 0	41.9	Day 15	34.4	Survey**	No
92	Female	35-39	Day 0	43.2	Day 50	NR	Healthcare routine testing	No
93	Male	25-29	Day 0	46.0	Day 41	31.6	Contact tracing	Not indicated
94	Male	20-24	Day 0	46.2	Day 80	33.0	Healthcare routine testing	No
95	Male	60-64	Day 0	47.0	Day 24	31.3	Survey**	No
96	Male	25-29	Day 0	47.8	Day 15	NR	Survey**	No
97	Male	40-44	Day 0	48.3	Day 48	NR	Survey**	No
98	Male	35-39	Day 0	49.4	Day 32	33.6	Survey**	Not indicated
99	Male	25-29	Day 0	51.7	Day 55	33.6	Clinical suspicion§	No††
100	Female	10-14	Day 0	52.4	Day 78	42.4	Individual request†	Not indicated
101	Male	30-34	Day 0	54.4	Day 15	35.9	Survey**	No
102	Male	35-39	Day 0	55.1	Day 91	37.5	Clinical suspicion§	Yes
103	Male	35-39	Day 0	56.1	Day 41	36.2	Survey**	No
104	Male	40-44	Day 0	57.2	Day 70	36.7	Clinical suspicion§	Yes

ID#	Demography		Ab testing		PCR testing			Presence of symptoms
	Sex	Age group	First-positive Ab test date	Ab test optical density (Ab titers)	Reinfection swab date	Average Ct value*	Reason for swab	
105	Male	50-54	Day 0	57.4	Day 98	37.3	Healthcare routine testing	No
106	Female	15-19	Day 0	63.8	Day 65	NR	Individual request <sup>†</sup>	No
107	Female	30-34	Day 0	65.0	Day 61	36.4	Port of entry <sup>‡</sup>	No
108	Male	25-29	Day 0	65.3	Day 33	NR	Contact tracing	No
109	Male	45-49	Day 0	66.8	Day 20	31.3	Contact tracing	No
110	Male	40-44	Day 0	68.6	Day 55	NR	Survey**	No
111	Female	30-34	Day 0	73.9	Day 79	NR	Survey**	No
112	Male	60-64	Day 0	76.5	Day 59	NR	Healthcare routine testing	No
113	Female	30-34	Day 0	77.3	Day 32	37.1	Contact tracing	No
114	Male	45-49	Day 0	81.5	Day 39	34.6	Healthcare routine testing	No
115	Male	65-69	Day 0	85.6	Day 70	35.7	Port of entry <sup>‡</sup>	No
116	Male	30-34	Day 0	92.2	Day 139	NR	Healthcare routine testing	No
117	Male	40-44	Day 0	94.1	Day 18	38.3	Survey**	No
118	Male	30-34	Day 0	97.1	Day 16	35.8	Healthcare routine testing	No
119	Male	40-44	Day 0	101.0	Day 96	33.1	Clinical suspicion <sup>§</sup>	Yes
120	Male	40-44	Day 0	101.9	Day 39	35.0	Survey**	No
121	Male	55-59	Day 0	105.3	Day 47	NR	Clinical suspicion <sup>§</sup>	No <sup>††</sup>
122	Male	35-39	Day 0	109.2	Day 121	NR	Survey**	No
123	Male	30-34	Day 0	121.9	Day 23	35.8	Contact tracing	No
124	Male	35-39	Day 0	124.4	Day 20	NR	Individual request <sup>†</sup>	No
125	Male	40-44	Day 0	125.3	Day 44	35.8	Clinical suspicion <sup>§</sup>	No <sup>††</sup>
126	Female	60-64	Day 0	128.0	Day 21	34.2	Survey**	No
127	Male	35-39	Day 0	141.0	Day 15	NR	Survey**	No
128	Male	35-39	Day 0	146.0	Day 35	NR	Clinical suspicion <sup>§</sup>	Yes
129	Male	30-34	Day 0	150.0	Day 25	34.1	Healthcare routine testing	No

Ab, antibody; Asymp, asymptomatic; Ct, cycle threshold; NR, not reported; PCR, polymerase chain reaction.

The table is sorted by antibody test optical density value (antibody titer).

The light blue color highlights reinfection cases that were confirmed by viral genome sequencing.

\*Average PCR Ct value over different targets for SARS-CoV-2 genes and/or proteins.

<sup>†</sup>The category “individual request” refers to testing conducted at a healthcare facility based on the individual’s request, often because of some requirement for testing, such as for travel.

<sup>‡</sup>The category “port of entry” refers to testing conducted at the border or airport upon return from travel.

<sup>§</sup>The category “clinical suspicion” refers to testing conducted at a healthcare facility based on presence of signs or symptoms, or reported history of exposure.

\*\*The category “survey” refers to surveillance random PCR testing campaigns conducted in workplaces and residential areas.

<sup>††</sup>The reason for the swab in the hospital record was “clinical suspicion”, but no further details were provided and the person was reported to have no COVID-19 symptoms.



**Table 2.** Results of reinfection confirmation using viral genome sequencing. Viral genome sequencing was conducted only for a subset of cases with *good* or *some* evidence of reinfection, that is, whenever paired samples of the first-infection PCR-positive swab and the reinfection PCR-positive swab were available.

<b>Viral genome sequencing evidence for reinfection</b>	<b>Indication upon comparing each genome pair</b>	<b>N</b>
Insufficient evidence to warrant interpretation	One or two genomes of low quality	7
No evidence for reinfection	One change of allele frequency	1
Shifting balance of quasi-species with no evidence for reinfection	Few changes of allele frequency but not sufficiently indicative of reinfection	6
Strong evidence for no reinfection	Both genomes of high quality yet no significant differences found	4*
Supporting evidence for reinfection	Few changes of allele frequency indicative of reinfection	1
Strong evidence for reinfection	Multiple changes of allele frequency indicative of reinfection	4
<b>Total</b>		<b>23</b>

PCR, polymerase chain reaction.

\*Viral genome sequencing for two patients was performed as part of an earlier study assessing the risk of SARS-CoV-2 reinfection in the cohort of PCR-confirmed infected persons in Qatar [5].

**Figure 2.** Viral genome sequencing analysis of paired viral specimens of the primary-infection PCR-positive swab and the reinfection PCR-positive swab for five cases with strong or supporting evidence of reinfection.

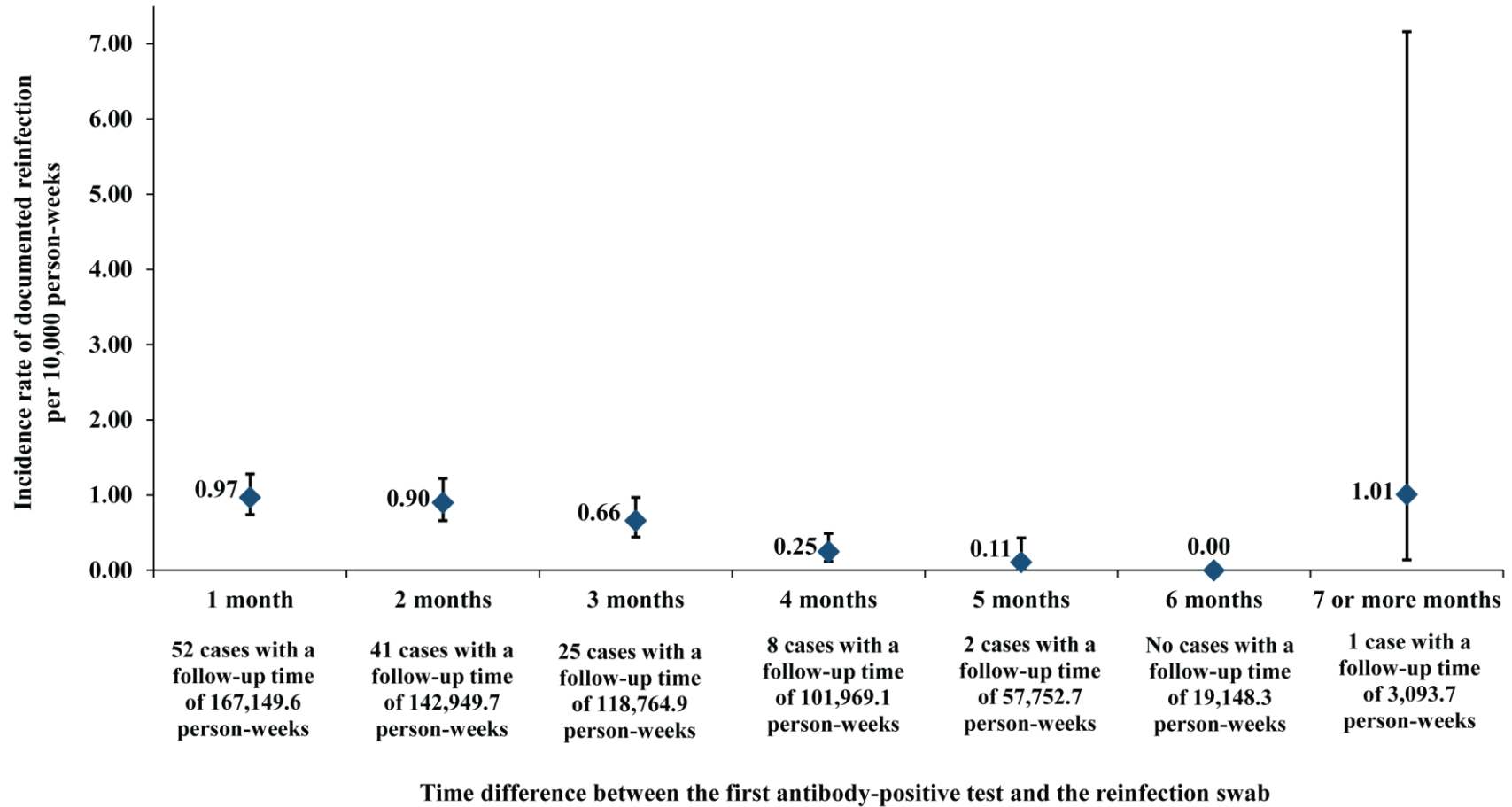
Patient ID	Patient 72		Patient 5		Patient 64		Patient 127		Patient 88	
Positive swab type	First-infection positive swab	Reinfection swab	First-infection positive swab	Reinfection swab	First-infection positive swab	Reinfection swab	First-infection positive swab	Reinfection swab	First-infection positive swab	Reinfection swab
Swab date	Day 0	Day 84	Day 0	Day 110	Day 0	Day 59	Day 0	Day 81	Day 0	Day 84
241	C	C	T	T	T	T	T	N	T	N
1059	C	C	T	T	C	T	T	N	T	C
1302	C	C	T	T	C	T	T	N	T	N
1808	A	C	A	A	A	A	A	N	A	N
1912	C	C	C	T	C	C	C	N	C	C
2647	A	N	A	A	A	N	A	N	A	A
3037	C	C	T	T	T	T	T	N	T	N
6449	C	C	C	C	C	C	C	C	C	C
6538	C	C	C	C	C	C	C	N	C	N
9169	C	C	C	C	C	C	C	C	C	C
9800	G	G	G	G	G	T	T	G	G	T
10605	C	N	C	C	C	C	C	C	C	C
10818	C	N	C	C	C	T	T	C	C	C
11357	A	A	C	A	A	A	A	A	A	N
12651	C	C	C	C	C	C	C	C	C	C
12778	C	C	C	C	T	C	C	C	C	N
13911	C	N	C	C	C	C	C	C	C	N
14408	C	N	T	T	T	N	T	N	T	N
14829	G	N	G	G	G	G	G	G	G	N
15016	G	N	G	G	G	G	G	N	T	N
15024	C	N	C	C	C	C	C	C	C	N
16178	C	C	C	C	C	C	C	C	C	C
16537	G	A	G	G	G	G	G	G	G	G
17193	G	G	G	G	G	T	T	G/T	G	T
17410	C	C	C	C	T	C	C	C	C	N
17518	C	C	N	C	C	C	C	T	N	C
17907	T	C	T	T	T	T	T	T	T	T
18122	G	N	G	G	G	G	G	N	G	N
18175	C	C	C	T	C	C	C	C	C	N
19441	C	C	C	C	C	C	C	N	T	N
19509	G	G	G	G	G	G	G	N	G	N
19944	C	C	C	C	C	C	C	C	C	C
20178	C	C	C	C	C	C	C	C	C	C
20679	G	G	G	G	G	N	G	N	G	G
21974	G	N	T	T	G	G	G	G	G	G
23403	A	A	G	G	G	G	G	N	G	G
23635	C	C	C	C	T	C	C	C	C	C
25027	T	N	T	T	T	T	T	N	T	N
25552	G	N	G	G	G	G	G	N	G	N
25563	G	G	T	T	G	T	T	N	T	N
26022	C	N	C	C	C	N	T	N	C	N
26144	G	T	G	G	G	G	G	N	G	G
26895	C	C	N	N	C	C	C	C	N	C
27989	A	A	A	A	A	A	A	A	A	A
28087	C	T	C	C	C	C	C	C	C	C
28881	G	G	G	G	A	G	G	G	G	G
28882	G	G	G	G	A	G	G	G	G	G
28883	G	G	G	G	C	G	G	G	G	G
28887	C	C/T	T	T	C	T	T	T	T	T
29272	C	C	C	C	C	C	C	C	C	C
29370	C	C	C	C	C	C	C	C	C	C
29541	C	C	C	C	C	C	C	C	C	C
29642	C	C	T	T	C	C	C	C	C	C
29659	C	C	C	C	C	C	C	C	C	C
Description	Multiple changes of allele frequency indicative of reinfection		Multiple changes of allele frequency indicative of reinfection		Multiple changes of allele frequency indicative of reinfection		Multiple changes of allele frequency indicative of reinfection		Few changes of allele frequency indicative of reinfection	
Interpretation	Strong evidence for reinfection and evidence for D614G mutation		Strong evidence for reinfection		Strong evidence for reinfection		Strong evidence for reinfection		Supporting evidence for reinfection	

Letter N denotes unknown.

Numbers in cells represent the balance of reads for the reference and alternate alleles in that order.

Manual calls are represented by white cells with the nucleotide call.

**Figure 3.** Incidence rate of documented SARS-CoV-2 reinfection versus month of follow-up in the cohort of 43,044 antibody-positive persons.



## **Supplementary Material**

### **SARS-CoV-2 reinfection in a cohort of 43,000 antibody- positive individuals followed for up to 35 weeks**

## **Text S1. Details of the viral genome sequencing methods.**

Viral RNA was extracted using Quick-RNA Viral Kit (Zymo Research, Irvine, USA; Cat. No. R1041) and eluted in 30ul of nuclease-free water. RNA quality was assessed with real-time quantitative polymerase chain reaction (RT-qPCR) using SARS-CoV-2 (2019-nCoV) CDC qPCR Probe Assay Research Use Only (RUO) kit (Integrated DNA Technologies, USA; Cat number 10006713) and Luna Universal Probe One-Step RT-qPCR Kit (New England BioLabs, USA; Cat number E3006E) on Applied Biosystems 7500 Fast Real-Time PCR instrument (Applied Biosystems, CA, USA).

Next-generation sequencing (NGS) library construction was performed using CleanPlex SARS-CoV-2 Panel (Paragon Genomics, USA; SKU: 918012). Gel-size selection on a 3% agarose gel was utilized to prevent formation of adapter dimers. NGS libraries were quantified using KAPA Library Quantification Kit (Roche, USA; KK4824), and normalized, pooled, and sequenced on an Illumina MiSeq instrument using a paired-end 150bp kit (Illumina, USA; MS-102-2002). All procedures were implemented following manufacturers' protocols.

Raw sequences were processed with CUTADAPT (v2.10) [1] to exclude the contaminating adapter sequences. Adapter trimming was performed using parameters -g

**CCTACACGACGCTCTTCCGATCT -a AGATCGGAAGAGCACACGTCTGAA -A**

**AGATCGGAAGAGCGTCGTGTAGG -G TTCAGACGTGTGCTCTTCCGATCT -e 0.1 -O 9**

**-m 50 -n 2**. Only paired reads with minimum length of 50bp were retained for analysis. The

latter filtered reads were aligned to SARS-CoV-2 reference genome (NC\_045512) using BWA-

MEM [2]. FGBIO (v1.3.0) was subsequently used to remove PCR primer sequences from the resulting BAM file.

Variant calling and genotyping were performed with VarScan multi-sample mpileup [3] with the pileup file generated using SAMTOOLS mpileup (v1.10) [4] with --min-BQ 20 and --min-MQ 20 parameters. The mpileup2snp function of VarScan was then applied with the filtering parameters --min-var-freq 0.2, --min-coverage 5, and --min-avg-qual 20, to generate the final VCF file.

**Figure S1.** Viral genome sequencing analysis of the paired viral specimens of the primary-infection PCR-positive swab and the reinfection PCR-positive swab for the eleven cases with evidence not supporting occurrence of reinfection.

**A) Two individuals with strong evidence for no reinfection** (using viral genome sequencing conducted in this study)

Patient ID	Patient 17		Patient 41	
	First-infection positive swab	Reinfection swab	First-infection positive swab	Reinfection swab
	Day 0	Day 54	Day 0	Day 76
241	C	T	T	N
1059	C	T	T	T
1302	C	T	T	T
1808	A	A	A	A
1912	C	C	C	C
2647	A	A	A	A
3037	C	T	T	T
6449	C	T	C	C
6538	C	C	C	C
9169	C	C	C	C
9800	G	G	G	G
10605	C	C	C	C
10818	C	C	C	C
11357	A	A	A	N
12651	C	C	C	C
12778	C	C	C	C
13911	C	C	C	C
14408	C	T	T	T
14829	G	G	G	G
15016	G	G	G	G
15024	C	C	C	C
16178	C	C	C	C
16537	G	G	G	G
17193	G	G	G	G
17410	C	C	C	C
17518	C	C	C	C
17907	T	T	T	T
18122	G	G	G	G
18175	C	C	C	C
19441	C	C	C	C
19509	G	G	G	G
19944	C	C	C	C
20178	C	T	T	C
20679	G	G	G	G
21974	G	G	G	T
23403	A	G	G	G
23635	C	C	C	C
25027	T	T	T	N
25552	G	G	G	G
25563	G	T	T	T
26022	C	C	C	N
26144	G	G	G	N
26895	C	N	N	C
27989	A	A	A	A
28087	C	C	C	C
28881	G	G	G	G
28882	G	G	G	G
28883	G	G	G	G
28887	C	T	T	T
29272	C	C	C	C
29370	C	C	C	C
29541	C	C	C	C
29642	C	C	T	T
29659	C	C	C	C
<b>Description</b>	Both genomes of high quality yet no significant differences found		Both genomes of high quality yet no significant differences found	
<b>Interpretation</b>	Strong evidence for no reinfection		Strong evidence for no reinfection	

Letter N denotes unknown.  
 Numbers in cells represent the balance of reads for the reference and alternate alleles in that order.  
 Manual calls are represented by white cells with the nucleotide call.

**B) Two individuals with *strong evidence for no reinfection*** (using viral genome sequencing conducted in an earlier study [5])

Patient ID	Patient 8		Patient 12	
	First-infection positive swab	Reinfection swab	First-infection positive swab	Reinfection swab
	Day 0	Day 57	Day 0	Day 65
241	C	T	T	T
373	G	G	G	G
1302	C	T	T	T
2644	C	C	C	C
2788	C	C	C	C
2878	C	C	C	C
3037	C	T	T	T
3373	C	C	C	C
3695	C	C	C	C
6181	T	T	T	T
6817	A	A	A	A
7733	A	A	A	A
9841	G	G	G	G
10595	T	T	T	T
12695	C	C	C	C
14408	C	T	T	T
14805	C	C	C	C
15315	C	C	C	C
15486	A	A	A	A
15672	G	G	G	G
16537	G	G	G	G
16989	C	C	C	C
17193	G	G	G	G
17550	C	N	C	N
17907	T	T	T	T
20870	G	G	G	G
21712	A	A	A	A
21737	T	T	T	T
21846	C	C	C	C
22015	T	T	T	T
23403	A	N	G	G
24675	A	A	A	A
24926	G	G	G	G
25207	C	C	C	C
25460	C	C	C	C
25552	G	G	G	G
25563	G	T	T	T
25704	T	T	T	T
26144	G	G	G	G
26801	C	N	N	N
26963	A	A	A	A
27341	A	A	A	A
27476	C	C	C	C
27769	C	C	C	C
28054	C	C	C	C
28087	C	C	C	C
29144	C	C	C	C
29370	C	T	T	C
29554	G	G	G	T
29642	C	C	C	C
<b>Description</b>	Both genomes of high quality yet no significant differences found		Both genomes of high quality yet no significant differences found	
<b>Interpretation</b>	Strong evidence for no reinfection		Strong evidence for no reinfection	

Letter N denotes unknown.

Numbers in cells represent the balance of reads for the reference and alternate alleles in that order.

Manual calls are represented by white cells with the nucleotide call.



**C) Seven individuals with *no evidence for reinfection***

Patient ID	Patient 4		Patient 29		Patient 60		Patient 65		Patient 70		Patient 87		Patient 75	
	First-infection positive swab	Reinfection swab	First-infection positive swab	Reinfection swab	First-infection positive swab	Reinfection swab	First-infection positive swab	Reinfection swab	First-infection positive swab	Reinfection swab	First-infection positive swab	Reinfection swab	First-infection positive swab	Reinfection swab
Swab date	Day 0	Day 56	Day 0	Day 47	Day 0	Day 91	Day 0	Day 55	Day 0	Day 112	Day 0	Day 105	Day 0	Day 65
241	C	T	T	T	T	T	T	N	C	C	T	T	T	T
1059	C	T	T	C	T	N	N	T	C	C	T	T	T	T
1302	C	T	T	C/T	T	T	N	T	C	C	T	T	T	T
1808	A	A	A	A	A	A	A	A	A	N	A	A	A	A
1912	C	C	C	C	C	C	C	C	C	C	C	C	C	C
2647	A	A	A	A	A	A	A	A	A	A	G	A/G	A	A
3037	C	T	T	T	T	N	T	T	C	C/T	T	T	T	N
6449	C	C	C/T	C	C	C	C	C	C	C	C	C	C	C
6538	C	C	C	C/T	C	C	N	C	C	C	C	C	C	C
9169	C	C	C	C	C	C	C	C	C	C	T	C	C	C
9800	G	G	G	G/T	G	T	T	G	G	G	G	G	G	G
10605	C	C	C	C	C	N	C	C	C	C	C	T	C	C
10818	C	C	C	C	C	C/T	N	C	C	C	C	C	C	C
11357	A	A	A	A/C	A	A	N	A	A	A	A	A	A	A
12651	C	C	C	C	C	C	C	T	C	C	C	C	C	C
12778	C	C	C	C	C	C	C	C	C	C	C	C	C	C
13911	C	C	C	C	C	C	C	N	C	C	C	C	C	C
14408	C	T	T	T	T	N	N	T	T	C	C	T	T	T
14829	G	T	G/T	G	G	G	G	G	G	G	G	G	G	G
15016	G	G	G	G	G	G	G	N	G	G	G	G	G	G/T
15024	C	C	C	C	C	C	C	N	C	C	C	C	C	C
16178	C	C	C	C	C	C	C	C	C	C	C	C	C	C
16537	G	G	G	G	G	G	G	G	A	A	G	G	G	G
17193	G	T	G	G	G	T	T	G	G/T	G	G	G	G	G
17410	C	C	C	C	C	C	C	C	C	C	C	C	C	C
17518	C	C	C	C	N	N	C	C	C	C	C	C	C	C
17907	T	T	T	T	T	T	T	T	T	T	T	T	T	T
18122	G	T	G/T	G	G	G	N	G	G	G	G	G	G	G
18175	C	C	C	C	C	C	C	C	C	C	C	C	C	C
19441	C	C	C	C	C	C	C	N	C	C	C	C	C	C
19509	G	G	G	G	G	G	G	G	G	G	G	G	G	G
19944	C	C	C	C	C	C	C	C	T	T	C	C	C	C
20178	C	C	C/T	C/T	C	C	C	C	C	C	C	C	T	T
20679	G	G	G	G	G	N	N	G	N	G	G	G/T	G	G
21974	G	G	G	G/T	G	G	G	G	G	G	G	G	G	G
23403	A	G	G	G	G	G	G	G	A	A	G	G	G	G
23635	C	C	C	C	C	C	C	C	C	C	C	C	C	C
25027	T	T	T	T	T	T	T	C	N	T	T	T	T	T
25552	G	G	G	G	G	G	G	G	G	G	G	G/T	G	G
25563	G	T	T	G/T	T	G/T	T	T	G	G	G	T	T	T
26022	C	C	C	C	C	N	T	C	N	C	C	C	C	C
26144	G	G	G	G	G	G	G	G	G	T	T	G	G	G
26895	C	T	C/T	C	N	N	C	C	N	C	C	N	N	C
27989	A	A	A	A	A	A	A	A	A	G	A	A	A	A
28087	C	C	C	C	C	C	C	C	C	C	C	C	C	C
28881	G	G	G	G	G	G	G	G	G	G	G	G	G	G
28882	G	G	G	G	G	G	G	G	G	G	G	G	G	G
28883	G	G	G	G	G	G	G	G	G	G	G	G	G	G
28887	C	T	T	T	T	T	T	T	T	C	C/T	T	T	T
29272	C	C	C	C	C	C	C	C	C	C	C	C	C	C
29370	C	C	C	C	T	C	C	C	C	C	C	C	C	C
29541	C	C	C	C	C	C	C	C	C	C	C	C	C	C
29642	C	C	C	C/T	C	C	C	C	C/T	C	C	C	C	C
29659	C	C	C	C	C	C	C	C	C	C	C	C/T	C	C
<b>Description</b>	Few changes of allele frequency but not sufficiently indicative of reinfection		Few changes of allele frequency but not sufficiently indicative of reinfection		Few changes of allele frequency but not sufficiently indicative of reinfection		Few changes of allele frequency but not sufficiently indicative of reinfection		Few changes of allele frequency but not sufficiently indicative of reinfection		Few changes of allele frequency but not sufficiently indicative of reinfection		One change of allele frequency	
<b>Interpretation</b>	Shifting balance of quasi-species with no evidence for reinfection		Shifting balance of quasi-species with no evidence for reinfection		Shifting balance of quasi-species with no evidence for reinfection		Shifting balance of quasi-species with no evidence for reinfection		Shifting balance of quasi-species with no evidence for reinfection		Shifting balance of quasi-species with no evidence for reinfection		No evidence for reinfection	

Letter N denotes unknown.

Numbers in cells represent the balance of reads for the reference and alternate alleles in that order.

Manual calls are represented by white cells with the nucleotide call.

**Figure S2.** Viral genome sequencing analysis of the paired viral specimens of the primary-infection PCR-positive swab and the reinfection PCR-positive swab for the seven cases with insufficient genetic evidence to confirm the reinfection.

Patient ID	Patient 19			Patient 34			Patient 39		Patient 46		Patient 86		Patient 101		Patient 124	
Positive swab type	First-infection positive swab	Reinfection swab	First-infection positive swab	Reinfection swab	First-infection positive swab	Reinfection swab	First-infection positive swab	Reinfection swab	First-infection positive swab	Reinfection swab	First-infection positive swab	Reinfection swab	First-infection positive swab	Reinfection swab	First-infection positive swab	Reinfection swab
Swab date	Day 0	Day 137	Day 0	Day 54	Day 0	Day 49	Day 0	Day 80	Day 0	Day 57	Day 0	Day 87	Day 0	Day 87	Day 0	Day 87
241	C	T	N	N	T	N	T	N	T	N	T	N	T	N	N	N
1059	C	T	N	C	C/T	C	T	N	C/T	N	C	N	C	N	N	N
1302	C	T	N	N	C/T	N	T	N	T	N	T	N	C	N	N	N
1808	A	A	N	N	A	N	A	N	A	N	A	N	A	N	N	N
1912	C	C	N	N	C	N	C	N	C	N	C	N	C	N	N	N
2647	A	A	N	N	A	N	A	N	A	N	A	N	A	N	N	A
3037	C	T	N	N	T	C	T	N	T	N	C	N	T	N	N	N
6449	C	C	N	N	C	N	C	N	C	N	C	N	C	N	N	N
6538	C	C	N	N	C	N	C	N	C	N	C	N	T	N	N	N
9169	C	C	N	N	C	N	C	N	C	N	C	N	C	N	N	C
9800	G	G	N	N	G	N	G	N	G	N	T	N	G	N	N	G
10605	C	T	N	C	C	N	C	N	C	N	N	N	C	N	N	C
10818	C	C	N	C	C	N	C	N	C	N	C/T	N	C	C	N	C
11357	A	A	N	N	A	N	A	N	A	N	A	N	A	N	N	C
12651	C	C	N	C	C	N	C	N	C	N	C	N	C	N	N	C
12778	C	C	N	C	C	N	C	N	C	N	C	N	C	N	N	C
13911	C	C	N	N	C	N	C	N	C	N	C	N	C	N	N	N
14408	C	T	N	N	T	N	T	N	T	N	N	N	T	N	N	N
14829	G	G	N	N	G/T	N	G	N	G	N	G	N	G	N	N	G
15016	G	G	N	N	G	N	G	N	G	N	G	N	G	N	N	G
15024	C	C	N	N	T	N	C	N	C	N	C	N	C	N	N	C
16178	C	C	N	N	C	N	C	C	C	N	C	N	C	N	N	N
16537	G	G	N	N	G	N	G	G	G	N	G	N	G	N	N	G/A
17193	G	G	N	N	G/T	G	G	G	G/T	N	G	N	G	N	N	G
17410	C	C	N	N	C	N	C	C	C	N	C	N	C	N	N	C
17518	C	C	N	N	N	N	N	N	C	N	C	N	C	N	N	N
17907	T	T	N	N	T	N	T	T	T	N	T	N	T	N	N	T
18122	G	G	N	N	G/T	N	G	N	G	N	G	N	G	N	N	G
18175	C	C	N	N	C	N	C	N	C	N	C	N	C	N	N	N
19441	C	C	N	N	C	N	C	N	C	N	C	N	C	N	N	C
19509	G	G	N	N	A	N	G	N	G	N	G	N	G	N	N	G
19944	C	C	N	N	C	N	C	N	C	N	C	N	C	N	N	C
20178	C	C	N	N	C	N	C	C	C	N	C	N	C	N	N	C
20679	G	T	N	N	G	N	G	N	N	N	N	N	G	N	N	G
21974	G	G	N	N	G	N	G	N	G	N	G	N	G	N	N	T
23403	A	G	N	N	G	N	G	N	G	N	G	N	G	N	N	N
23635	C	C	N	N	C	N	C	N	C	N	C	N	C	N	N	C
25027	T	T	N	N	T	N	T	N	T	N	N	N	T	N	N	T
25552	G	T	N	N	G	N	G	N	G	N	G	N	G	N	N	G
25563	G	T	N	N	G	N	G	N	T	N	T	N	G	N	N	G
26022	C	C	N	C	C	N	C	N	C	N	N	N	C	N	N	C
26144	G	G	N	N	G	N	G	N	G	N	G	N	G	N	N	N
26895	C	N	N	N	N	N	N	N	N	N	C	N	N	N	N	C
27989	A	A	N	N	A	N	A	A	A	N	A	N	A	N	N	N
28087	C	C	N	N	C	N	C	N	C	N	C	N	C	N	N	C
28881	G	G	N	N	G/A	N	G	G	G	N	G	N	G	N	N	G
28882	G	G	N	N	G/A	N	G	G	G	N	G	N	G	N	N	G
28883	G	G	N	N	G/C	N	G	G	G	N	G	N	G	N	N	G
28887	C	T	N	N	C/T	C	T	C/T	T	C/T	T	N	C	N	N	T
29272	C	C	N	N	C	N	C	C	C	N	C	N	C	N	N	C
29370	C	C	N	C	C	N	C	N	C	N	C	N	C	N	N	C
29541	C	C	N	N	C	N	C	C	C	N	C	N	C	N	N	N
29642	C	C	N	N	C	N	C	N	C	C	C	N	C	N	N	C
29659	C	T	N	N	C	N	C	N	C	N	C	N	C	N	N	C
<b>Description</b>	One or two genomes of low quality			One or two genomes of low quality			One or two genomes of low quality		One or two genomes of low quality		One or two genomes of low quality		One or two genomes of low quality		One or two genomes of low quality	
<b>Interpretation</b>	Insufficient evidence to warrant interpretation			Insufficient evidence to warrant interpretation			Insufficient evidence to warrant interpretation		Insufficient evidence to warrant interpretation		Insufficient evidence to warrant interpretation		Insufficient evidence to warrant interpretation		Insufficient evidence to warrant interpretation	

Letter N denotes unknown.

Numbers in cells represent the balance of reads for the reference and alternate alleles in that order.

Manual calls are represented by white cells with the nucleotide call.

## References

1. Martin M., *Cutadapt removes adapter sequences from high-throughput sequencing reads*. ISSN 2226-6089. Available at: <http://journal.embnet.org/index.php/embnetjournal/article/view/200>. Date accessed: 17 sep. 2020. doi:<https://doi.org/10.14806/ej.17.1.200>. EMBnet.journal, 2011. **17**(1): p. 10-12.
2. Li, H. and R. Durbin, *Fast and accurate short read alignment with Burrows-Wheeler transform*. Bioinformatics, 2009. **25**(14): p. 1754-60.
3. Koboldt, D.C., et al., *VarScan: variant detection in massively parallel sequencing of individual and pooled samples*. Bioinformatics, 2009. **25**(17): p. 2283-5.
4. Li, H., et al., *The Sequence Alignment/Map format and SAMtools*. Bioinformatics, 2009. **25**(16): p. 2078-9.
5. Abu-Raddad, L.J., et al., *Assessment of the risk of SARS-CoV-2 reinfection in an intense re-exposure setting*. Clinical Infectious Diseases, 2020. ciaa1846. doi: 10.1093/cid/ciaa1846. .