

## **SUPPLEMENTARY MATERIALS**

### **Section 1. Materials and Methods**

#### **1.1. SARS-CoV-2 RNA identification from samples**

In the UdelaR Labs Network for SARS-CoV-2 molecular detection (CENUR Regional Norte-Salto, CURE Regional Este-Rocha, Campus Tacuarembó, Uruguay) previously described, located in Salto, Rocha and Tacuarembó cities, the viral RNA extraction was performed directly from samples (virus transport media containing the swab collected) by using the Viral RNA Isolation Kit (Liferiver Bio-Tech Corp., San Diego, USA), according to the manufacturer's instructions. The viral RNA extracted was used as a template in a OneStep RT-qPCR kit *COVID-19 RT-PCR Real TM Fast* (UdelaR, IPMON and ATGen S.R.L., Montevideo, Uruguay) to test the presence of SARS-CoV-2 RNA in the samples, according to the manufacturer's instructions. Sanatorio Americano Montevideo (SASA, Laboratory of Molecular Biology) used on the one hand, Coronavirus COVID-19 genesig® Real-Time PCR assay and on the other, GeneFinder Covid-19 Plus RealAmp Kit, according to manufacturer's instructions. In Brazil in both institutions, the viral RNA was obtained by QIAamp Viral RNA Mini kit (QIAGEN, Hilden, Germany) or automatedly Perkin-Elmer Chemagic machine/chemistry using 140 µl or 300 µl of the sample, respectively, according to the manufacturer's instructions. SARS-CoV-2 positive cases were confirmed by real-time RT-PCR assays using the SARS-CoV-2 Molecular E/RP Kit (Biomanguinhos, Rio de Janeiro, Brazil) based on the primers previously designed by<sup>1</sup>

#### **1.2. Reverse transcription and SARS-CoV-2 whole-genome amplification**

Total RNA from positive samples was reverse transcribed using SuperScript™ IV First Strand Synthesis System (Invitrogen, Carlsbad, CA, USA), according to the manufacturer's instructions. Two multiplex PCR reactions with the primer scheme (Pool A = nine amplicons and Pool B = eight amplicons) were performed for building long (~2kb) amplicon libraries to recover SARS-CoV-2 genomes as previously described by Resende and co-workers<sup>2</sup>, by using the Q5® High-Fidelity DNA Polymerase (New England Biolabs, Ipswich, MA, USA), according to the manufacturer's instructions. When SARS-CoV-2 genome amplification was unsuccessful with the long 2kb amplicons strategy, a second strategy was used. In this case SARS-CoV-2 genomes were recovered by building short (~400pb) amplicon libraries as previously described by Quick and co-workers<sup>3</sup>, using the hCoV-19 primer scheme V3 (which can be obtained under <https://github.com/artic-network/primer-schemes/tree/master/nCoV-2019/V3>). Both protocols (long and

short amplicons libraries) are based on the amplicon tiling strategy described previously by Quick and co-workers<sup>4</sup>. Both pools were mixed and the amplicons were purified using Agencourt AMPure XP beads (Beckman Coulter™, Brea, CA, USA) and a quality control was performed to measure the quantity of DNA using the Qubit™ dsDNA BR Assay Kit (Invitrogen) and Qubit Fluorometric Quantification.

### **1.3. SARS-CoV-2 whole-genome sequencing**

Different sequencing methods were used to produce the genomes for this study, such as Illumina, Nanopore and Ion Torrent. ONT libraries were prepared by using the Ligation Sequencing Kit (SQK-LSK109) and Native Barcoding Expansion (EXP-NBD104 and EXP-NBD114), both from ONT (Oxford Nanopore Technologies, United Kingdom). The NEBNext Ultra II End Repair/dA-Tailing Module and NEBNext Ultra II Ligation Module were used to ligate barcodes and sequence adapters to each sample (New England Biolabs, Ipswich, MA, USA), according to the manufacturer's instructions. Negative controls using H<sub>2</sub>O as template (no RNA) in the RT step were added as amplification controls and were kept in the rest of the process as sequencing controls. We used MinION sequencing platforms (Oxford Nanopore Technologies Ltd., Oxford, UK) as described in detail elsewhere<sup>5</sup>. Illumina short reads DNA libraries were generated from the pooled amplicons using Nextera XT DNA Sample Preparation Kit (Illumina, San Diego, CA, USA) according to the manufacturer specifications. Library sizes were evaluated using a 4200 TapeStation System (Agilent, Santa Clara, USA). Samples were then sequenced (pair-end) (Micro V2, 300 cycles) on a MiSeq equipment (Illumina, San Diego, USA) in around 18 hours. Ion Torrent: 100 ng of each purified PCR products were used to produce Ion Torrent™ compatible sequencing libraries, using NEBNext® Fast DNA Library Prep Set for Ion Torrent™ (#E6270L, New England Biolabs, Inc) and Ion Xpress™ Barcode Adapters (#4474517, Ion Torrent™) following manufacturer instructions. Following Qubit™ Fluorometer quantification with Qubit™ dsDNA HS Assay Kit, libraries were diluted and combined in a equimolar fashion to obtain 25 µl of 50 pM the input for the sequencing template preparation. Template preparation and Ion 530™ Chip loading were conducted with the Ion Chef™ Instrument, with the Ion 510™ & Ion 520™ & Ion 530™ Kit – Chef (#A34019, Ion Torrent™), following manufacturer instructions. Sequencing was performed in the Ion GeneStudio™ S5 System™, using Ion 510™ & Ion 520™ & Ion 530™ Kit – Chef (#A34019, Ion Torrent™), following manufacturer instructions.

### **1.4. SARS-CoV-2 whole-genome consensus sequences**

Each of the sequencing platforms used generated fastq files analyzed by different methods to obtain final consensus sequence.

The raw data from the MinION was analyzed with the pipeline developed by the COVID-19 Genomics UK consortium<sup>6</sup>, which is based on the Artic Network bioinformatic pipeline<sup>7</sup>. The pipeline was embedded within Nextflow as in<sup>8</sup> with minor modifications to fit local infrastructure<sup>9</sup>.

Within that pipeline different combinations of parameters were used. For the demultiplexing step with Guppy v3.6.0 (<https://community.nanoporetech.com>) we asked for both barcodes to be present (at both ends with `min_score 50` and `min_score_rear_override 40`). Alternatively, we requested one barcode with a higher score (`min_score 60`). Careful inspection of results indicated that relaxing Guppy parameters decreased N content in the final sequence without introducing any variants.

Ion Torrent reads were mapped to the reference genome using Bowtie 2<sup>10</sup> allowing local alignments. Finally, bcftools was used for SNP calling (`mpileup`), SNP filtering (minimum quality of 20 and filtering adjacent indels within 5 bases) and to build the consensus sequences (`consensus function`). Positions of interest (about 20 bases around synapomorphic sites) were manually inspected to resolve undetermined bases.

In Brazilian Institutions, demultiplexed fastq files generated by Illumina or IonTorrent sequencing were used as the input for the analysis. Reads were trimmed based on quality scores with a cutoff of Q30, in order to remove low quality regions and adapter sequences were filtered. Following standard pre-processing steps, reads were mapped to the hCoV-19/Wuhan/Hu-1/2019 strain (GISAID accession number EPI\_ISL\_402125). Duplicate reads were removed from the alignment and the consensus sequence called at a threshold of 10x. The entire workflow was carried out in CLC Genomics Workbench software version 20.0 (<https://digitalinsights.qiagen.com>).

### **1.5 Maximum likelihood phylogenetic analyses**

All full-length B.1.1.28 (n = 275) and B.1.1.33 (n = 492) SARS-CoV-2 genomes available on GISAID (<https://www.gisaid.org/>) as of October 19 2020, were downloaded and aligned with Uruguayan and Brazilian sequences of the same lineages generated in this study using MAFFT v7.467<sup>11</sup>. ML phylogenetic trees were constructed under the GTR+F+I+G4 nucleotide substitution model selected by the in-built Smart Model Selection (SMS) option<sup>12</sup> and visualized using FigTree v1.4.4 (<http://tree.bio.ed.ac.uk/software/figtree/>).

## **1.6 Bayesian phylogeographic analyses**

Temporal signal was assessed by performing a regression analysis of the root-to-tip divergence against sampling time using TempEst<sup>13</sup>. Time-scaled Bayesian trees were estimated using the non-parametric Bayesian skyline (BSKL) model as the coalescent tree prior<sup>14</sup>, under the optimal model of nucleotide substitution determined for each data set by the SMS option and applying a strict molecular clock model with a fixed substitution rate ( $8 \times 10^{-4}$  substitutions/site/year) based on previous estimates<sup>15,16</sup>. Three MCMC chains were run for 100 and 200 million generations for the B.1.1.28 and B.1.1.33 datasets, respectively, and then combined to ensure stationarity and good mixing. Convergence (Effective Sample Size > 200) in parameter estimates was assessed using TRACER v1.7<sup>17</sup>. The maximum clade credibility (MCC) trees were summarized with TreeAnnotator v1.10 and visualized using FigTree v1.4.4.

## **1.7 Within host diversity**

Given that for some samples read coverage was low at the identified synapomorphic sites, base frequencies were obtained straight from the adapter trimmed bam files (Tables S4-S7). Only those observations where the genome position was covered by at least 100 reads were kept for further analysis. As samples were obtained by three different sequencing technologies (data for 108, 108 and 494 synapomorphic sites was obtained using Illumina, Ion Torrent and ONT, respectively) and sequencing biases exist due to different error profiles, a Shannon Entropy<sup>18</sup> value (H) was estimated per observation based on the four allele frequencies. As diagnostics plots evidence an effect due to the sequencing technology (Figures S1A-B), we determined a linear model to estimate the contributions of sequencing technology, sample and synapomorphic site, to the observed A, C, G, T frequencies (summarized as H):  $H \exp \frac{1}{4} \sim \text{SEQ} + \text{SAMPLE} + \text{MUTATION}$ . We used  $H \exp \frac{1}{4}$  to better fit a normal distribution (Figure S1C). This was implemented using the lm function of the R environment<sup>19</sup>. Residuals of the model are shown in Figure S1D and coefficients for the covariables are shown in Table S8.

## Section 2. Supplementary tables

**Table S1:** Detailed information of each genome generated for this study by the different sequencing centers. Travel “yes” means that person had recently traveled or was in contact with a recent traveler. Superscript B means that the demultiplexing step was done requiring both barcodes at both ends with min\_score above 50 and 40, respectively. Superscript R corresponds to the demultiplexing step without requiring the presence of both barcodes but using min\_score above 60.

Diagnostic Center	Sequencing Center	Accession ID	CollectionSite	Sequencing Method	Protocol	Travel
SASA	Institut Pasteur de Montevideo	ART-M107	Artigas	MinION	V3 short amplicons <sup>R</sup>	
CENUR Regional Norte	Institut Pasteur de Montevideo	ART-M146	Artigas	MinION	V3 short amplicons <sup>R</sup>	yes
CENUR Regional Norte	Institut Pasteur de Montevideo	BUN-M151	Bella Unión	MinION	long amplicons <sup>R</sup>	
CENUR Regional Norte	Institut Pasteur de Montevideo	BUN-M152	Bella Unión	MinION	long amplicons <sup>R</sup>	
CENUR Regional Norte	Institut Pasteur de Montevideo	BUN-M163	Bella Unión	MinION	V3 short amplicons <sup>R</sup>	
SASA	Institut Pasteur de Montevideo	CEL-M116	Río Branco	MinION	long amplicons <sup>R</sup>	
CURE, Regional Este	Institut Pasteur de Montevideo	CHY-M100	Chuy	MinION	V3 short amplicons <sup>R</sup>	
CENUR Regional Norte	IIBCE	RIV-M10	Rivera	Ion Torrent	V3 short amplicons	
CENUR Regional Norte	IIBCE	RIV-M11	Rivera	Ion Torrent	V3 short amplicons	
SASA	Institut Pasteur de Montevideo	RIV-M119	Rivera	MinION	long amplicons <sup>R</sup>	
CENUR Regional Norte	IIBCE	RIV-M12	Rivera	Ion Torrent	V3 short amplicons	
CENUR Regional Norte	IIBCE	RIV-M13	Rivera	Ion Torrent	V3 short amplicons	
CENUR Regional Norte	IIBCE	RIV-M14	Rivera	Ion Torrent	V3 short amplicons	
CENUR	IIBCE	RIV-M15	Rivera	Ion Torrent	V3 short	

Regional Norte					amplicons	
CENUR Regional Norte	Institut Pasteur de Montevideo	RIV-M154	Rivera	MinION	long amplicons <sup>R</sup>	
CENUR Regional Norte	Institut Pasteur de Montevideo	RIV-M155	Rivera	MinION	V3 short amplicons <sup>R</sup>	
Campus Tacuarembó	Institut Pasteur de Montevideo	RIV-M170	Rivera	MinION	long amplicons <sup>R</sup>	
SASA	Institut Pasteur de Montevideo	RIV-M40	Rivera	MinION	long amplicons <sup>B</sup>	
SASA	Institut Pasteur de Montevideo	RIV-M43	Rivera	MinION	V3 short amplicons <sup>B</sup>	
CENUR Regional Norte	IIBCE	RIV-M5	Rivera	Ion Torrent	V3 short amplicons	
Campus Tacuarembó	Institut Pasteur de Montevideo	RIV-M72	Rivera	MinION	V3 short amplicons <sup>B</sup>	
Campus Tacuarembó	Institut Pasteur de Montevideo	RIV-M73	Rivera	MinION	V3 short amplicons <sup>B</sup>	
CENUR Regional Norte	Institut Pasteur de Montevideo	RIV-M79	Rivera	MinION	V3 short amplicons <sup>B</sup>	
CENUR Regional Norte	IIBCE	RIV-M8	Rivera	Ion Torrent	V3 short amplicons	
CENUR Regional Norte	IIBCE	RIV-M9	Rivera	Ion Torrent	V3 short amplicons	
CENUR Regional Norte	Institut Pasteur de Montevideo	ART-M157	Artigas	MinION	V3 short amplicons <sup>R</sup>	
SASA	Institut Pasteur de Montevideo	TYT-M130	Treinta y Tres	MinION	V3 short amplicons <sup>R</sup>	
SASA	Institut Pasteur de Montevideo	TYT-M132	Treinta y Tres	MinION	V3 short amplicons <sup>R</sup>	
SASA	Institut Pasteur de Montevideo	TYT-M133	Treinta y Tres	MinION	long amplicons <sup>R</sup>	
SASA	Institut Pasteur de Montevideo	TYT-M135	Treinta y Tres	MinION	long amplicons <sup>R</sup>	

SASA	Institut Pasteur de Montevideo	TYT-M136	Treinta y Tres	MinION	long amplicons <sup>R</sup>	
SASA	Institut Pasteur de Montevideo	TYT-M49	Treinta y Tres	MinION	long amplicons <sup>B</sup>	yes
SASA	Institut Pasteur de Montevideo	TYT-M52	Treinta y Tres	MinION	V3 short amplicons <sup>R</sup>	
SASA	Institut Pasteur de Montevideo	TYT-M54	Treinta y Tres	MinION	V3 short amplicons <sup>R</sup>	
SASA	Institut Pasteur de Montevideo	TYT-M57	Treinta y Tres	MinION	long amplicons <sup>B</sup>	
SASA	Institut Pasteur de Montevideo	TYT-M60	Treinta y Tres	MinION	V3 short amplicons <sup>R</sup>	
SASA	Institut Pasteur de Montevideo	TYT-M62	Treinta y Tres	MinION	V3 short amplicons <sup>R</sup>	
SASA	Institut Pasteur de Montevideo	TYT-M63	Treinta y Tres	MinION	V3 short amplicons <sup>R</sup>	
SASA	Institut Pasteur de Montevideo	TYT-M64	Treinta y Tres	MinION	long amplicons <sup>B</sup>	
SASA	Institut Pasteur de Montevideo	TYT-M65	Treinta y Tres	MinION	V3 short amplicons <sup>R</sup>	
SASA	Institut Pasteur de Montevideo	TYT-M66	Treinta y Tres	MinION	V3 short amplicons <sup>R</sup>	
SASA	Institut Pasteur de Montevideo	TYT-M67	Treinta y Tres	MinION	V3 short amplicons <sup>R</sup>	
SASA	Institut Pasteur de Montevideo	TYT-M68	Treinta y Tres	MinION	V3 short amplicons <sup>R</sup>	
SASA	Institut Pasteur de Montevideo	TYT-M69	Treinta y Tres	MinION	V3 short amplicons <sup>R</sup>	
SASA	Institut Pasteur de Montevideo	TYT-M70	Treinta y Tres	MinION	V3 short amplicons <sup>R</sup>	
SASA	Institut Pasteur de Montevideo	TYT-M71	Treinta y Tres	MinION	V3 short amplicons <sup>R</sup>	
SASA	Institut Pasteur de Montevideo	TYT-M85	Treinta y Tres	MinION	V3 short amplicons <sup>B</sup>	
SASA	Institut Pasteur de Montevideo	TYT-M87	Treinta y Tres	MinION	V3 short amplicons <sup>B</sup>	

SASA	Institut Pasteur de Montevideo	TYT-M91	Treinta y Tres	MinION	long amplicons <sup>B</sup>	
SASA	Institut Pasteur de Montevideo	TYT-M93	Treinta y Tres	MinION	V3 short amplicons <sup>B</sup>	
SASA	Institut Pasteur de Montevideo	TYT-M94	Treinta y Tres	MinION	V3 short amplicons <sup>B</sup>	
SASA	Institut Pasteur de Montevideo	TYT-M95	Treinta y Tres	MinION	V3 short amplicons <sup>B</sup>	
SASA	Institut Pasteur de Montevideo	TYT-M97	Treinta y Tres	MinION	long amplicons <sup>B</sup>	
SASA	Institut Pasteur de Montevideo	TYT-M98	Treinta y Tres	MinION	V3 short amplicons <sup>B</sup>	
LACEN/RS	LRN, IOC, Fiocruz	hCoV-19/Brazil/RS-15270/2020	PASSO FUNDO	Illumina Miseq	long amplicons	
LACEN/RS	LRN, IOC, Fiocruz	hCoV-19/Brazil/RS-15273/2020	CACHOEIRA DO SUL	Illumina Miseq	long amplicons	
LACEN/RS	LRN, IOC, Fiocruz	hCoV-19/Brazil/RS-15279/2020	NOVA BRESCIA	Illumina Miseq	long amplicons	
LACEN/RS	LRN, IOC, Fiocruz	hCoV-19/Brazil/RS-15283/2020	PORTO ALEGRE	Illumina Miseq	long amplicons	
LACEN/RS	LRN, IOC, Fiocruz	hCoV-19/Brazil/RS-15286/2020	SAO BORJA	Illumina Miseq	long amplicons	
LACEN/RS	LRN, IOC, Fiocruz	hCoV-19/Brazil/RS-2525/2020	PORTO ALEGRE	Illumina Miseq	long amplicons	
LACEN/RS	LRN, IOC, Fiocruz	hCoV-19/Brazil/RS-2528/2020	ERECHIM	Illumina Miseq	long amplicons	
LACEN/RS	LRN, IOC, Fiocruz	hCoV-19/Brazil/RS-2529/2020	SANTANA DO LIVRAMENTO	Illumina Miseq	long amplicons	
LACEN/RS	LRN, IOC, Fiocruz	hCoV-19/Brazil/RS-2533/2020	TORRES	Illumina Miseq	long amplicons	
LACEN/RS	LRN, IOC, Fiocruz	hCoV-19/Brazil/RS-2539/2020	SANTA MARIA	Illumina Miseq	long amplicons	
LACEN/RS	LRN, IOC, Fiocruz	hCoV-19/Brazil/RS-2544/2020	TORRES	Illumina Miseq	long amplicons	
LACEN/RS	LRN, IOC, Fiocruz	hCoV-	PORTO	Illumina	long	



	Fiocruz	19/Brazil/RS-2546/2020	ALEGRE	Miseq	amplicons	
LACEN/RS	LRN, IOC, Fiocruz	hCoV-19/Brazil/RS-2549/2020	MARAU	Illumina Miseq	long amplicons	
LACEN/RS	LRN, IOC, Fiocruz	hCoV-19/Brazil/RS-2550/2020	SÃO LEOPOLDO	Illumina Miseq	long amplicons	
LACEN/RS	LRN, IOC, Fiocruz	hCoV-19/Brazil/RS-2553/2020	SÃO DOMINGOS DO SUL	Illumina Miseq	long amplicons	
LACEN/RS	LRN, IOC, Fiocruz	hCoV-19/Brazil/RS-2554/2020	PORTO ALEGRE	Illumina Miseq	long amplicons	
LACEN/RS	LRN, IOC, Fiocruz	hCoV-19/Brazil/RS-2556/2020	FARROUPILHA	Illumina Miseq	long amplicons	
LACEN/RS	LRN, IOC, Fiocruz	hCoV-19/Brazil/RS-2564/2020	PORTO ALEGRE	Illumina Miseq	long amplicons	
LACEN/RS	LRN, IOC, Fiocruz	hCoV-19/Brazil/RS-2565/2020	PORTO ALEGRE	Illumina Miseq	long amplicons	
LACEN/RS	LRN, IOC, Fiocruz	hCoV-19/Brazil/RS-2567/2020	CIDREIRA	Illumina Miseq	long amplicons	
LACEN/RS	LRN, IOC, Fiocruz	hCoV-19/Brazil/RS-6169/2020	PASSO FUNDO	Illumina Miseq	long amplicons	
LACEN/RS	LRN, IOC, Fiocruz	hCoV-19/Brazil/RS-6177/2020	CARLOS BARBOSA	Illumina Miseq	long amplicons	
LACEN/RS	LRN, IOC, Fiocruz	hCoV-19/Brazil/RS-6179/2020	SANTA ROSA	Illumina Miseq	long amplicons	
LACEN/RS	LRN, IOC, Fiocruz	hCoV-19/Brazil/RS-6180/2020	VENÂNCIO AIRES	Illumina Miseq	long amplicons	
LACEN/RS	LRN, IOC, Fiocruz	hCoV-19/Brazil/RS-6183/2020	SALDANHA MARINHO	Illumina Miseq	long amplicons	
LACEN/RS	LRN, IOC, Fiocruz	hCoV-19/Brazil/RS-6184/2020	ITAQUI	Illumina Miseq	long amplicons	
LACEN/RS	LRN, IOC, Fiocruz	hCoV-19/Brazil/RS-6187/2020	VILA MARIA	Illumina Miseq	long amplicons	
LACEN/RS	LRN, IOC,	hCoV-	CAXIAS DO	Illumina	long	

	Fiocruz	19/Brazil/RS-6188/2020	SUL	Miseq	amplicons	
LACEN/RS	LRN, IOC, Fiocruz	hCoV-19/Brazil/RS-6189/2020	CAXIAS DO SUL	Illumina Miseq	long amplicons	
LACEN/RS	LRN, IOC, Fiocruz	hCoV-19/Brazil/RS-6190/2020	ARROIO DO MEIO	Illumina Miseq	long amplicons	
LACEN/RS	LRN, IOC, Fiocruz	hCoV-19/Brazil/RS-6192/2020	SERAFINA CORREA	Illumina Miseq	long amplicons	
LACEN/RS	LRN, IOC, Fiocruz	hCoV-19/Brazil/RS-6195/2020	NOVA ARAÇA	Illumina Miseq	long amplicons	
LACEN/RS	LRN, IOC, Fiocruz	hCoV-19/Brazil/RS-6196/2020	PASSO FUNDO	Illumina Miseq	long amplicons	
LACEN/RS	LRN, IOC, Fiocruz	hCoV-19/Brazil/RS-6197/2020	NÃO ME TOQUE	Illumina Miseq	long amplicons	
LACEN/RS	LRN, IOC, Fiocruz	hCoV-19/Brazil/RS-6198/2020	SERAFINA CORREA	Illumina Miseq	long amplicons	
LACEN/RS	LRN, IOC, Fiocruz	hCoV-19/Brazil/RS-6203/2020	QUARAÍ	Illumina Miseq	long amplicons	
LACEN/RS	LRN, IOC, Fiocruz	hCoV-19/Brazil/RS-6205/2020	SANTANA DO LIVRAMENTO	Illumina Miseq	long amplicons	
LACEN/RS	LRN, IOC, Fiocruz	hCoV-19/Brazil/RS-6208/2020	FREDERICO WESTPHALEN	Illumina Miseq	long amplicons	
LACEN/RS	LRN, IOC, Fiocruz	hCoV-19/Brazil/RS-6213/2020	PASSO FUNDO	Illumina Miseq	long amplicons	
LACEN/RS	LRN, IOC, Fiocruz	hCoV-19/Brazil/RS-6215/2020	PASSO FUNDO	Illumina Miseq	long amplicons	
LACEN/RS	LRN, IOC, Fiocruz	hCoV-19/Brazil/RS-6218/2020	VAIMAO	Illumina Miseq	long amplicons	
LACEN/RS	LRN, IOC, Fiocruz	hCoV-19/Brazil/RS-6219/2020	PORTO ALEGRE	Illumina Miseq	long amplicons	
LACEN/RS	LRN, IOC, Fiocruz	hCoV-19/Brazil/RS-6220/2020	PORTO ALEGRE	Illumina Miseq	long amplicons	
LACEN/RS	LRN, IOC, Fiocruz	hCoV-19/Brazil/RS-6222/2020	FLORES DA CUNHA	Illumina Miseq	long amplicons	
LACEN/RS	LRN, IOC, Fiocruz	hCoV-19/Brazil/RS-	VENANCIO AIRES	Illumina Miseq	long amplicons	

		6227/2020				
LACEN/RS	LRN, IOC, Fiocruz	hCoV-19/Brazil/RS-6228/2020	LAJEADO	Illumina Miseq	long amplicons	
LACEN/RS	LRN, IOC, Fiocruz	hCoV-19/Brazil/RS-6231/2020	CAÇAPAVA DO SUL	Illumina Miseq	long amplicons	
LACEN/RS	LRN, IOC, Fiocruz	hCoV-19/Brazil/RS-6232/2020	BAGE	Illumina Miseq	long amplicons	
LACEN/RS	LRN, IOC, Fiocruz	hCoV-19/Brazil/RS-6240/2020	SANTO ANGELO	Illumina Miseq	long amplicons	
LACEN/RS	LRN, IOC, Fiocruz	hCoV-19/Brazil/RS-6241/2020	GIRUA	Illumina Miseq	long amplicons	
LACEN/RS	LRN, IOC, Fiocruz	hCoV-19/Brazil/RS-6242/2020	CRUZ ALTA	Illumina Miseq	long amplicons	
LACEN/RS	LRN, IOC, Fiocruz	hCoV-19/Brazil/RS-6226/2020	BARRA DO RIBEIRO	IonTorrent	long amplicons	
LACEN/RS	LRN, IOC, Fiocruz	hCoV-19/Brazil/RS-6243/2020	IGREJINHA	IonTorrent	long amplicons	
LACEN/RS	LRN, IOC, Fiocruz	hCoV-19/Brazil/RS-15274/2020	PORTO ALEGRE	Nanopore MinION	long amplicons	
LACEN/RS	LRN, IOC, Fiocruz	hCoV-19/Brazil/RS-15275/2020	ARROIO GRANDE	Nanopore MinION	long amplicons	
LACEN/RS	LRN, IOC, Fiocruz	hCoV-19/Brazil/RS-15276/2020	BOM RETIRO DO SUL	Nanopore MinION	long amplicons	
LACEN/RS	LRN, IOC, Fiocruz	hCoV-19/Brazil/RS-15278/2020	TAPEJARA	Nanopore MinION	long amplicons	
LACEN/RS	LRN, IOC, Fiocruz	hCoV-19/Brazil/RS-15280/2020	PORTO ALEGRE	Nanopore MinION	long amplicons	
LACEN/RS	LRN, IOC, Fiocruz	hCoV-19/Brazil/RS-15281/2020	FARROUPILHA	Nanopore MinION	long amplicons	
LACEN/RS	LRN, IOC, Fiocruz	hCoV-19/Brazil/RS-15282/2020	CAXIAS DO SUL	Nanopore MinION	long amplicons	
LACEN/RS	LRN, IOC, Fiocruz	hCoV-19/Brazil/RS-15284/2020	IJUI	Nanopore MinION	long amplicons	
LACEN/RS	LRN, IOC, Fiocruz	hCoV-19/Brazil/RS-15285/2020	VENANCIO AIRES	Nanopore MinION	long amplicons	
LACEN/RS	LRN, IOC,	hCoV-	SANTA ROSA	Nanopore	long	

	Fiocruz	19/Brazil/RS-15287/2020		MinION	amplicons	
LACEN/RS	LRN, IOC, Fiocruz	hCoV-19/Brazil/RS-15288/2020	NAO-ME-TOQUE	Nanopore MinION	long amplicons	
LACEN/RS	LRN, IOC, Fiocruz	hCoV-19/Brazil/RS-15289/2020	PORTO ALEGRE	Nanopore MinION	long amplicons	
LACEN/RS	LRN, IOC, Fiocruz	hCoV-19/Brazil/RS-15290/2020	OSORIO	Nanopore MinION	long amplicons	
LACEN/RS	LRN, IOC, Fiocruz	hCoV-19/Brazil/RS-15291/2020	TRES PASSOS	Nanopore MinION	long amplicons	
LACEN/RS	LRN, IOC, Fiocruz	hCoV-19/Brazil/RS-15292/2020	PORTO ALEGRE	Nanopore MinION	long amplicons	

**Table S2. Accession IDs Uruguayan Genomes**

Accession ID
EPI ISL 747615
EPI ISL 749238
EPI ISL 748667
EPI ISL 748143
EPI ISL 748142
EPI ISL 749036
EPI ISL 748141
EPI ISL 748140
EPI ISL 749152
EPI ISL 749153
EPI ISL 748145
EPI ISL 749154
EPI ISL 748144
EPI ISL 749155
EPI ISL 749474
EPI ISL 749150
EPI ISL 749151
EPI ISL 750108
EPI ISL 750430
EPI ISL 750820
EPI ISL 749906
EPI ISL 748139
EPI ISL 748138
EPI ISL 749706
EPI ISL 749149

EPI ISL 749148
EPI ISL 750167
EPI ISL 750165
EPI ISL 750166
EPI ISL 750163
EPI ISL 750164
EPI ISL 751011
EPI ISL 750161
EPI ISL 750162
EPI ISL 750169
EPI ISL 750170
EPI ISL 750171
EPI ISL 750178
EPI ISL 750179
EPI ISL 750256
EPI ISL 750176
EPI ISL 750177
EPI ISL 750174
EPI ISL 750175
EPI ISL 750172
EPI ISL 751184
EPI ISL 750173
EPI ISL 751186
EPI ISL 751187
EPI ISL 751185
EPI ISL 751190
EPI ISL 751201
EPI ISL 751188
EPI ISL 751189

**Table S3.** SARS-CoV-2 lineage-defining SNPs. Lineage-defining SNPs (mutations), that were sequentially fixed during evolution and dissemination of each SARS-CoV-2 Brazilian-Uruguayan clades here identified,  $T_{MRCA}$  and samples that compose each clade.

Clade	Subclade	Subclade	Subclade	Accession ID
				D-NVRL-72IRL12139
				RJ-1901
				RJ-2000
				RJ-2007
				RJ-2091
				RJ-2342

<p><b>BR-UY-I<sub>33</sub></b>  <b>S:22720A&gt;G</b>  <b>Mar 12</b>  <b>(Mar 09- Mar 21)</b></p>	<p><b>TT-I<sub>33</sub> + SP</b>  <b>ORF1ab:8293C&gt;T</b>  <b>Mar 17</b>  <b>(Mar 14-Mar 25)</b></p>	<p><b>TT-I<sub>33</sub></b>  <b>ORF1ab:5089A&gt;G</b>  <b>N:28775C&gt;T</b>  <b>May 26</b>  <b>(May 12-Jun 07)</b></p>	<p><b>TT-I<sub>33</sub> less one</b>  <b>ORF1ab:15108C&gt;T</b>  <b>May 30</b>  <b>(May 22-Jun 06)</b></p>	SP-259
				SP-263
				SP-315
				SP-564
				SP-L7-CD72
				TyT-M70
				TyT-M132
				TyT-M133
				TyT-M135
				TyT-M136
				TyT-M49
				TyT-M52
				TyT-M54
				TyT-M57
				TyT-M60
				TyT-M62
				TyT-M63
				TyT-M64
				TyT-M65
				TyT-M66
				TyT-M67
				TyT-M68
				TyT-M69
				TyT-M130
				TyT-M71
				TyT-M85
				TyT-M87
				TyT-M91
TyT-M93				
TyT-M94				
TyT-M95				
TyT-M97				
TyT-M98				
RS-6177				
RS-15280				
RS-6222				
RS-15273				
RS-6188				
RS-6203				

<p><b>BR-UY-II<sub>33</sub></b>  <b>ORF8:28093C&gt;T</b>  <b>Mar 29</b>  <b>(Mar 12-Apr 13)</b></p>	<p><b>RI-I<sub>33</sub> +RS</b>  <b>ORF1ab:18252C&gt;T</b>  <b>ORF1ab:2276A&gt;G</b>  <b>Apr 16</b>  <b>(Apr 05-Apr 30)</b></p>	<p><b>RI-I<sub>33</sub></b>  <b>S:24872G&gt;T</b>  <b>May 2</b>  <b>(Apr 27-May 04)</b></p>	<p><b>RI-II<sub>33</sub></b>  <b>5'UTR:189G&gt;T</b>  <b>ORF1ab:12025C&gt;T</b>  <b>S:23311G&gt;T</b>  <b>July 10</b>  <b>(Jun 27-Jul 18)</b></p>	RS-6208
				RS-6231
				RIV-M119
				RIV-M154
				RIV-M155
				RIV-M10
				RIV-M11
				RIV-M12
				RIV-M13
				RIV-M14
			RIV-M15	
			RIV-M40	
			RIV-M43	
			RIV-M5	
			RIV-M72	
			RIV-M73	
			RIV-M79	
			RIV-M8	
			RIV-M9	
			UY-650	
UY-651				
UY-652				
UY-667				
UY-957				
<p><b>BR-UY-I<sub>28</sub></b></p>	<p><b>AR-I<sub>28</sub></b>  <b>ORF1ab:1471C&gt;T,</b>  <b>1519C&gt;T, 5995A&gt;G,</b>  <b>9605T&gt;C, 15606T&gt;C</b>  <b>S:23416A&gt;T</b>  <b>ORF3a:26159T&gt;C</b>  <b>N:28508A&gt;T, 29367C&gt;T</b>  <b>3'UTR:29737G&gt;T</b>  <b>Jul 02</b>  <b>(Jun 17-Jul 16)</b></p>			SP-275
				ART-M157
				BUN-M151
				BUN-M152
				BUN-M163
				RS-L19-CD390
				RS-15276
				RS-6242

<b>BR-RS-I<sub>33</sub></b> <b>ORF1ab:15654C&gt;T</b> <b>Mar 23</b> <b>(Mar 14- Mar 31)</b>	RS-6228
	RS-6179
	RS-6190
	RS-6197
	RS-6198
	RS-6241
	RS-15287
	RS-6187
	RS-6227
	RS-6180

**Table S4.** Within-host diversity BR-UY-II33. The table shows the observed allele count for each synapomorphic site identified in clade BR-UY-II33

CLADE BR-UY-II33		1. 189G>T (5'-UTR)						2. 2276A>G (ORF1ab: 1671V)				
Lineage	Outbreak	Sample	A	C	G	T	num.reads	A	C	G	T	num.reads
B.1.1.33	Rivera I	M5	1	0	21564	0	21565	91	0	8177	6	8274
B.1.1.33	Rivera I	M8	1	1	15403	0	15405	226	0	545	0	771
B.1.1.33	Rivera I	M9	2	1	14404	0	14407	24	0	1746	1	1771
B.1.1.33	Rivera I	M10	0	3	11145	1	11149	47	0	3693	5	3745
B.1.1.33	Rivera I	M11	0	0	17862	0	17862	64	0	4760	10	4834
B.1.1.33	Rivera I	M12	1	1	14172	0	14174	35	0	3019	4	3058
B.1.1.33	Rivera I	M13	0	3	12904	0	12907	59	0	4083	5	4147
B.1.1.33	Rivera I	M14	3	1	12670	0	12674	66	0	5239	8	5313
B.1.1.33	Rivera I	M15	0	0	19821	0	19821	53	0	4705	12	4770
B.1.1.33	Rivera I	M40	3	0	195	0	198	45	2	882	0	929
B.1.1.33	Rivera I	M43	12	1	969	4	986	34	0	630	1	665
B.1.1.33	Rivera I	M72	7	0	984	1	992	35	2	628	2	667
B.1.1.33	Rivera I	M73	7	2	979	0	988	0	0	3	0	3
B.1.1.33	Rivera I	M79	8	1	978	2	989	9	0	133	0	142
B.1.1.33	Rivera II	M119	0	1	3	158	162	716	0	5	1	722
B.1.1.33	Rivera II	M154	0	2	4	135	141	562	0	9	2	573
B.1.1.33	Rivera II	M155	2	9	31	946	988	132	0	2	0	134
B.1.1.33		RS-15273	0	1	1267	2	1270	1	0	1895	4	1900
B.1.1.33		RS-15280	2	0	318	0	320	476	1	12	0	489
B.1.1.33		RS-6177	2	1	960	2	965	3539	14	5	11	3569
B.1.1.33		RS-6188	0	0	116	0	116	0	0	2251	2	2253
B.1.1.33		RS-6203	0	0	259	0	259	1	5	2954	6	2966



B.1.1.33		RS-6208	1	0	144	1	146	136	1	945	1	1083
B.1.1.33		RS-6222	0	1	305	1	307	1	1	1089	0	1091
B.1.1.33		RS-6231	0	0	111	0	111	0	1	687	1	689
			<b>3. 12025C&gt;T (ORF1ab: S3920S)</b>					<b>4. 18252C&gt;T (ORF1ab: N5995N)</b>				
Lineage	Outbreak	Sample	A	C	G	T	num.reads	A	C	G	T	num.reads
B.1.1.33	Rivera I	M5	1	19988	0	11	20000	32	11	1	20172	20216
B.1.1.33	Rivera I	M8	10	55176	2	1	55189	13	7	0	8994	9014
B.1.1.33	Rivera I	M9	1	25561	1	1	25564	22	7	2	9245	9276
B.1.1.33	Rivera I	M10	2	18667	1	10	18680	32	26	2	16098	16158
B.1.1.33	Rivera I	M11	0	18597	2	1	18600	28	12	0	17031	17071
B.1.1.33	Rivera I	M12	2	19479	0	0	19481	20	13	0	14090	14123
B.1.1.33	Rivera I	M13	1	17285	0	0	17286	31	24	0	16236	16291
B.1.1.33	Rivera I	M14	1	14015	1	0	14017	23	8	1	14182	14214
B.1.1.33	Rivera I	M15	1	19521	1	2	19525	16	15	2	18139	18172
B.1.1.33	Rivera I	M40	3	981	0	6	990	6	12	3	971	992
B.1.1.33	Rivera I	M43	1	982	2	8	993	3	21	5	949	978
B.1.1.33	Rivera I	M72	5	981	1	6	993	2	28	1	950	981
B.1.1.33	Rivera I	M73	2	983	0	9	994	1	22	1	810	834
B.1.1.33	Rivera I	M79	2	989	0	5	996	1	7	0	416	424
B.1.1.33	Rivera II	M119	1	13	1	267	282	0	271	3	8	282
B.1.1.33	Rivera II	M154	4	48	4	872	928	0	962	3	29	994
B.1.1.33	Rivera II	M155	8	49	2	879	938	0	618	4	21	643
B.1.1.33		RS-15273	0	1200	0	3	1203	6	6	1	3110	3123
B.1.1.33		RS-15280	0	49	0	0	49	1	455	1	38	495
B.1.1.33		RS-6177	1	360	0	2	363	10	6371	6	10	6397
B.1.1.33		RS-6188	0	46	0	1	47	2	2	0	546	550
B.1.1.33		RS-6203	0	76	0	0	76	0	2	0	400	402
B.1.1.33		RS-6208	0	55	0	0	55	0	128	1	1246	1375
B.1.1.33		RS-6222	0	101	0	0	101	1	8	3	5403	5415
B.1.1.33		RS-6231	0	43	0	0	43	8	8	10	7782	7808
			<b>4. 18252C&gt;T (ORF1ab: N5995N)</b>					<b>5. 23311G&gt;T (Spike protein S1: E571D)</b>				
Lineage	Outbreak	Sample	A	C	G	T	num.reads	A	C	G	T	num.reads
B.1.1.33	Rivera I	M5	32	11	1	20172	20216	0	12	28247	15	28274
B.1.1.33	Rivera I	M8	13	7	0	8994	9014	1	0	56612	1	56614
B.1.1.33	Rivera I	M9	22	7	2	9245	9276	2	0	42747	3	42752
B.1.1.33	Rivera I	M10	32	26	2	16098	16158	1	0	22062	0	22063
B.1.1.33	Rivera I	M11	28	12	0	17031	17071	0	4	28490	0	28494
B.1.1.33	Rivera I	M12	20	13	0	14090	14123	0	0	22665	0	22665
B.1.1.33	Rivera I	M13	31	24	0	16236	16291	0	0	20148	3	20151
B.1.1.33	Rivera I	M14	23	8	1	14182	14214	0	0	15263	1	15264
B.1.1.33	Rivera I	M15	16	15	2	18139	18172	1	0	24879	1	24881
B.1.1.33	Rivera I	M40	6	12	3	971	992	13	1	948	1	963
B.1.1.33	Rivera I	M43	3	21	5	949	978	5	1	977	1	984
B.1.1.33	Rivera I	M72	2	28	1	950	981	3	4	983	1	991
B.1.1.33	Rivera I	M73	1	22	1	810	834	3	0	993	0	996
B.1.1.33	Rivera I	M79	1	7	0	416	424	2	0	988	0	990
B.1.1.33	Rivera II	M119	0	271	3	8	282	0	0	5	114	119
B.1.1.33	Rivera II	M154	0	962	3	29	994	0	0	2	83	85

B.1.1.33	Rivera II	M155	0	618	4	21	643	4	1	17	972	994	
B.1.1.33		RS-15273	6	6	1	3110	3123	1	1	2631	5	2638	
B.1.1.33		RS-15280	1	455	1	38	495	5	1	488	1	495	
B.1.1.33		RS-6177	10	6371	6	10	6397	11	8	5405	14	5438	
B.1.1.33		RS-6188	2	2	0	546	550	0	3	1994	4	2001	
B.1.1.33		RS-6203	0	2	0	400	402	2	6	2649	6	2663	
B.1.1.33		RS-6208	0	128	1	1246	1375	1	1	807	0	809	
B.1.1.33		RS-6222	1	8	3	5403	5415	2	0	2277	3	2282	
B.1.1.33		RS-6231	8	8	10	7782	7808	8	3	2684	5	2700	
			<b>6. 24872G&gt;T (Spike protein S2: V419L)</b>					<b>7. 28093C&gt;T (ORF8: S52F)</b>					
Lineage	Outbreak	Sample	A	C	G	T	num.reads	A	C	G	T	num.reads	
B.1.1.33	Rivera I	M5	0	1	3	19955	19959	0	14	0	6149	6163	
B.1.1.33	Rivera I	M8	0	1	0	24167	24168	1	1	0	671	673	
B.1.1.33	Rivera I	M9	0	0	3	38422	38425	0	3	0	1150	1153	
B.1.1.33	Rivera I	M10	0	1	60	20587	20648	0	11	0	3753	3764	
B.1.1.33	Rivera I	M11	0	1	0	17546	17547	0	6	0	3048	3054	
B.1.1.33	Rivera I	M12	0	1	69	18470	18540	0	11	0	2389	2389	
B.1.1.33	Rivera I	M13	2	16	4	18801	18823	0	6	0	3635	3641	
B.1.1.33	Rivera I	M14	1	0	0	11543	11544	0	3	0	3477	3480	
B.1.1.33	Rivera I	M15	0	0	3	20400	20403	1	11	0	2969	2981	
B.1.1.33	Rivera I	M40	16	5	15	741	777	5	29	1	1779	1814	
B.1.1.33	Rivera I	M43	13	11	10	767	801	0	4	0	163	167	
B.1.1.33	Rivera I	M72	15	17	12	763	807	1	6	1	239	247	
B.1.1.33	Rivera I	M73	10	11	15	782	818	0	1	0	95	96	
B.1.1.33	Rivera I	M79	18	13	13	766	810	0	0	0	100	100	
B.1.1.33	Rivera II	M119	3	1	205	0	209	0	9	1	381	391	
B.1.1.33	Rivera II	M154	22	4	959	2	987	0	3	3	323	329	
B.1.1.33	Rivera II	M155	16	1	959	5	981	0	1	1	176	178	
B.1.1.33		RS-15273	1	0	1619	0	1620	3	0	0	2590	2593	
B.1.1.33		RS-15280	10	2	226	0	238	1	19	1	492	513	
B.1.1.33		RS-6177	0	1	2161	3	2165	4	3	6	4005	4018	
B.1.1.33		RS-6188	0	0	0	249	249	1	9	1	3258	3269	
B.1.1.33		RS-6203	0	0	309	2	311	0	3	3	3495	3501	
B.1.1.33		RS-6208	1	0	324	1	326	0	190	4	1046	1240	
B.1.1.33		RS-6222	1	0	2656	0	2657	1	5	2	2473	2481	
B.1.1.33		RS-6231	0	0	1567	1	1568	2	7	3	1871	1883	
<b>for comparison: CLADE BR-UY-I33</b>													
			<b>1. 189G&gt;T (5'-UTR)</b>					<b>2. 2276A&gt;G (ORF1ab: I671V)</b>					
Lineage	Outbreak	Sample	A	C	G	T	num.reads	A	C	G	T	num.reads	
B.1.1.33	Treinta y Tres	M49	0	1	131	0	132	985	3	5	0	993	
B.1.1.33	Treinta y Tres	M52	12	3	970	1	986	63	0	3	1	67	

B.1.1.33	Treinta y Tres	M53	6	1	662	2	671	4	0	0	0	4	
B.1.1.33	Treinta y Tres	M54	1	0	269	0	270	52	0	1	0	53	
B.1.1.33	Treinta y Tres	M57	3	0	313	0	316	976	1	7	1	985	
B.1.1.33	Treinta y Tres	M59	6	2	986	1	995	6	0	0	0	6	
B.1.1.33	Treinta y Tres	M60	9	2	765	2	778	13	0	1	0	14	
B.1.1.33	Treinta y Tres	M62	10	0	584	1	595	18	0	0	0	18	
B.1.1.33	Treinta y Tres	M63	12	1	972	1	986	16	0	0	0	16	
B.1.1.33	Treinta y Tres	M64	6	1	411	0	418	985	1	6	2	994	
B.1.1.33	Treinta y Tres	M65	0	0	2	0	2	379	0	6	0	385	
B.1.1.33	Treinta y Tres	M66	0	0	0	0	0	577	1	10	2	590	
B.1.1.33	Treinta y Tres	M67	0	0	0	0	0	449	0	7	0	456	
B.1.1.33	Treinta y Tres	M68	0	0	7	0	7	505	1	9	0	515	
B.1.1.33	Treinta y Tres	M69	0	0	1	1	2	703	2	11	1	717	
B.1.1.33	Treinta y Tres	M70	0	0	4	0	4	976	0	12	1	989	
B.1.1.33	Treinta y Tres	M71	0	0	2	0	2	483	0	7	0	490	
B.1.1.33	Treinta y Tres	M85	12	0	978	1	991	990	0	3	0	993	
B.1.1.33	Treinta y Tres	M87	15	0	966	4	985	973	2	6	1	982	
B.1.1.33	Treinta y Tres	M91	8	0	916	1	925	978	1	10	0	989	
B.1.1.33	Treinta y Tres	M93	4	2	982	2	990	981	3	7	2	993	
B.1.1.33	Treinta y Tres	M94	8	1	979	0	988	410	0	3	0	413	
B.1.1.33	Treinta y Tres	M95	11	1	971	2	985	253	0	2	0	255	
B.1.1.33	Treinta y Tres	M97	3	0	234	0	237	984	0	8	0	992	
B.1.1.33	Treinta y Tres	M98	5	2	974	1	982	210	0	0	0	210	
B.1.1.33	Treinta y Tres	M130	10	1	978	3	992	124	0	0	0	124	
B.1.1.33	Treinta y Tres	M132	8	2	974	0	984	417	0	4	1	422	
B.1.1.33	Treinta y Tres	M133	8	3	816	1	828	772	1	10	1	784	
B.1.1.33	Treinta y Tres	M135	3	2	569	2	576	695	0	6	2	703	
B.1.1.33	Treinta y Tres	M136	1	0	103	0	104	974	2	7	0	983	
B.1.1.33		RJ-2007	2	2	486	3	493	486	1	7	0	494	
B.1.1.33		RJ-2091	0	1	500	0	501	605	0	0	0	605	
B.1.1.33		RJ-2342	1	0	389	1	391	645	0	0	1	646	
			<b>3. 12025C&gt;T (ORF1ab: S3920S)</b>					<b>4. 18252C&gt;T (ORF1ab: N5995N)</b>					
Lineage	Outbreak	Sample	A	C	G	T	num.reads	A	C	G	T	num.reads	
B.1.1.33	Treinta y Tres	M49	4	767	0	4	775	1	821	3	25	850	
B.1.1.33	Treinta y Tres	M52	6	974	1	5	986	2	566	5	13	586	
B.1.1.33	Treinta y Tres	M53	0	194	0	1	195	0	24	0	1	25	
B.1.1.33	Treinta y Tres	M54	2	784	1	3	790	1	343	0	6	350	

B.1.1.33	Treinta y Tres	M57	1	780	0	3	784	0	702	4	22	728	
B.1.1.33	Treinta y Tres	M59	0	172	0	1	173	0	32	0	2	34	
B.1.1.33	Treinta y Tres	M60	0	524	1	4	529	0	79	0	1	80	
B.1.1.33	Treinta y Tres	M62	6	838	0	1	845	0	159	0	2	161	
B.1.1.33	Treinta y Tres	M63	3	518	1	7	529	0	50	0	0	50	
B.1.1.33	Treinta y Tres	M64	3	906	0	4	913	0	967	3	20	990	
B.1.1.33	Treinta y Tres	M65	2	683	2	3	690	0	827	5	27	859	
B.1.1.33	Treinta y Tres	M66	2	654	0	6	662	0	877	6	24	907	
B.1.1.33	Treinta y Tres	M67	1	790	0	3	794	0	873	10	22	905	
B.1.1.33	Treinta y Tres	M68	2	375	0	0	377	1	751	2	23	777	
B.1.1.33	Treinta y Tres	M69	2	648	0	3	653	1	955	2	29	987	
B.1.1.33	Treinta y Tres	M70	2	982	2	4	990	0	943	5	39	987	
B.1.1.33	Treinta y Tres	M71	3	762	2	4	771	0	956	6	31	993	
B.1.1.33	Treinta y Tres	M85	1	981	0	5	987	0	967	3	25	995	
B.1.1.33	Treinta y Tres	M87	5	972	2	6	985	1	952	4	25	982	
B.1.1.33	Treinta y Tres	M91	1	983	0	6	990	2	957	6	28	993	
B.1.1.33	Treinta y Tres	M93	3	980	1	6	990	1	963	3	21	988	
B.1.1.33	Treinta y Tres	M94	1	981	0	8	990	1	950	3	40	994	
B.1.1.33	Treinta y Tres	M95	1	983	0	5	989	0	966	2	20	988	
B.1.1.33	Treinta y Tres	M97	4	980	1	3	988	0	960	3	28	991	
B.1.1.33	Treinta y Tres	M98	2	990	0	6	998	0	972	6	15	993	
B.1.1.33	Treinta y Tres	M130	2	985	1	7	995	0	951	4	20	975	
B.1.1.33	Treinta y Tres	M132	2	982	0	5	989	0	958	7	29	994	
B.1.1.33	Treinta y Tres	M133	0	970	0	9	979	2	947	7	33	989	
B.1.1.33	Treinta y Tres	M135	3	739	2	10	754	0	591	3	17	611	
B.1.1.33	Treinta y Tres	M136	0	289	0	4	293	0	193	3	4	200	
B.1.1.33		RJ-2007	0	185	0	0	185	0	461	4	28	493	
B.1.1.33		RJ-2091	0	396	0	2	398	1	1507	0	1	1509	
B.1.1.33		RJ-2342	1	215	0	2	218	8	4432	1	6	4447	
			<b>5. 23311G&gt;T (Spike protein S1: E571D)</b>					<b>6. 24872G&gt;T (Spike protein S2: V419L)</b>					
Lineage	Outbreak	Sample	A	C	G	T	num.reads	A	C	G	T	num.reads	
B.1.1.33	Treinta y Tres	M49	2	0	893	1	896	3	0	303	5	311	
B.1.1.33	Treinta y Tres	M52	4	1	971	2	978	21	3	961	2	987	
B.1.1.33	Treinta y Tres	M53	7	1	982	0	990	13	0	333	1	347	
B.1.1.33	Treinta y Tres	M54	3	0	987	1	991	22	8	951	2	983	
B.1.1.33	Treinta y Tres	M57	6	2	980	3	991	10	0	544	1	555	
B.1.1.33	Treinta y Tres	M59	4	0	986	0	990	18	0	644	3	665	

B.1.1.33	Treinta y Tres	M60	5	1	981	1	988	34	5	779	7	825
B.1.1.33	Treinta y Tres	M62	3	0	987	3	993	25	3	927	3	958
B.1.1.33	Treinta y Tres	M63	9	1	982	3	995	25	4	955	0	984
B.1.1.33	Treinta y Tres	M64	7	3	980	0	990	7	1	559	1	568
B.1.1.33	Treinta y Tres	M65	7	1	986	0	994	19	3	622	2	646
B.1.1.33	Treinta y Tres	M66	3	4	982	2	991	19	1	645	1	666
B.1.1.33	Treinta y Tres	M67	2	1	743	0	746	13	2	408	0	423
B.1.1.33	Treinta y Tres	M68	12	1	950	3	966	13	4	480	4	501
B.1.1.33	Treinta y Tres	M69	5	4	977	1	987	15	3	665	5	688
B.1.1.33	Treinta y Tres	M70	4	2	974	1	981	21	3	964	0	988
B.1.1.33	Treinta y Tres	M71	6	2	982	3	993	26	7	591	4	628
B.1.1.33	Treinta y Tres	M85	5	1	987	0	993	18	4	960	3	985
B.1.1.33	Treinta y Tres	M87	5	3	979	0	987	14	4	958	7	983
B.1.1.33	Treinta y Tres	M91	2	3	849	1	855	19	0	962	4	985
B.1.1.33	Treinta y Tres	M93	3	2	984	0	989	17	1	965	5	988
B.1.1.33	Treinta y Tres	M94	5	1	977	0	983	13	6	960	4	983
B.1.1.33	Treinta y Tres	M95	2	1	987	4	994	21	8	954	3	986
B.1.1.33	Treinta y Tres	M97	4	3	807	1	815	9	1	339	0	349
B.1.1.33	Treinta y Tres	M98	2	0	993	1	996	15	3	963	4	985
B.1.1.33	Treinta y Tres	M130	3	1	984	0	988	19	4	966	1	990
B.1.1.33	Treinta y Tres	M132	8	0	984	0	992	22	2	962	3	989
B.1.1.33	Treinta y Tres	M133	0	0	148	0	148	12	5	906	6	929
B.1.1.33	Treinta y Tres	M135	1	0	155	0	156	9	0	409	2	420
B.1.1.33	Treinta y Tres	M136	1	0	170	0	171	1	1	261	1	264
B.1.1.33		RJ-2007	1	1	489	1	492	7	3	481	1	492
B.1.1.33		RJ-2091	1	0	1180	2	1183	0	0	612	0	612
B.1.1.33		RJ-2342	4	1	3112	7	3124	0	0	1572	1	1573
			<b>7. 28093C&gt;T (ORF8: S52F)</b>									
Lineage	Outbreak	Sample	A	C	G	T	num.reads					
B.1.1.33	Treinta y Tres	M49	5	1951	2	12	1970					
B.1.1.33	Treinta y Tres	M52	0	115	0	0	115					
B.1.1.33	Treinta y Tres	M53	0	11	0	0	11					
B.1.1.33	Treinta y Tres	M54	0	129	0	1	130					
B.1.1.33	Treinta y Tres	M57	3	1888	2	19	1912					
B.1.1.33	Treinta y Tres	M59	0	11	0	0	11					
B.1.1.33	Treinta y Tres	M60	0	23	0	0	23					
B.1.1.33	Treinta y Tres	M62	0	18	0	0	18					

B.1.1.33	Treinta y Tres	M63	0	30	0	0	30						
B.1.1.33	Treinta y Tres	M64	1	1937	1	25	1964						
B.1.1.33	Treinta y Tres	M65	0	494	1	13	508						
B.1.1.33	Treinta y Tres	M66	1	511	0	5	517						
B.1.1.33	Treinta y Tres	M67	0	655	1	6	662						
B.1.1.33	Treinta y Tres	M68	1	396	0	3	400						
B.1.1.33	Treinta y Tres	M69	0	609	1	7	617						
B.1.1.33	Treinta y Tres	M70	2	972	0	9	983						
B.1.1.33	Treinta y Tres	M71	0	494	1	10	505						
B.1.1.33	Treinta y Tres	M85	2	980	0	2	984						
B.1.1.33	Treinta y Tres	M87	1	975	0	10	986						
B.1.1.33	Treinta y Tres	M91	2	1308	0	14	1324						
B.1.1.33	Treinta y Tres	M93	0	980	0	13	993						
B.1.1.33	Treinta y Tres	M94	1	984	0	5	990						
B.1.1.33	Treinta y Tres	M95	3	980	0	6	989						
B.1.1.33	Treinta y Tres	M97	2	1958	0	25	1985						
B.1.1.33	Treinta y Tres	M98	3	970	0	11	984						
B.1.1.33	Treinta y Tres	M130	0	543	1	8	552						
B.1.1.33	Treinta y Tres	M132	3	859	3	7	872						
B.1.1.33	Treinta y Tres	M133	0	482	1	10	493						
B.1.1.33	Treinta y Tres	M135	3	539	2	3	547						
B.1.1.33	Treinta y Tres	M136	1	980	0	10	991						
B.1.1.33		RJ-2007	4	973	5	10	992						
B.1.1.33		RJ-2091	5	1371	0	3	1379						
B.1.1.33		RJ-2342	5	1776	0	1	1782						

**Table S5.** Within-host diversity BR-UY-I33. The table shows the observed allele count for each synapomorphic site identified in clade BR-UY-I33

CLADE BR-UY-I33													
			1. 5089A>G (ORF1ab: K1608K)					2. 8293C>T (ORF1ab: T2676T)					
Lineage	Outbreak	Sample	A	C	G	T	num.reads	A	C	G	T	num.reads	
B.1.1.33	Treinta y Tres	M49	82	5	469	4	560	2	12	0	289	303	
B.1.1.33	Treinta y Tres	M52	3	0	10	0	13	0	4	0	30	34	
B.1.1.33	Treinta y Tres	M53	1	0	3	0	4	0	0	0	46	46	
B.1.1.33	Treinta y Tres	M54	0	0	6	0	6	0	3	0	34	37	
B.1.1.33	Treinta y Tres	M57	95	7	397	3	502	2	28	0	534	564	
B.1.1.33	Treinta y Tres	M59	2	0	4	0	6	0	4	0	56	60	
B.1.1.33	Treinta y Tres	M60	0	0	7	0	7	0	2	0	40	42	



B.1.1.33	Treinta y Tres	M97	3	52	6	921	982	51	0	933	5	989
B.1.1.33	Treinta y Tres	M98	3	52	2	926	983	47	3	939	6	995
B.1.1.33	Treinta y Tres	M130	8	76	2	823	909	57	3	924	6	990
B.1.1.33	Treinta y Tres	M132	7	79	3	888	977	69	1	917	5	992
B.1.1.33	Treinta y Tres	M133	0	9	0	126	135	23	1	565	5	594
B.1.1.33	Treinta y Tres	M135	1	13	0	111	125	22	0	277	1	300
B.1.1.33	Treinta y Tres	M136	1	15	1	166	183	7	1	200	0	208
B.1.1.33		RJ-2007	0	464	3	31	498	37	0	454	3	494
B.1.1.33		RJ-2091	3	1409	6	4	1422	0	0	215	0	215
B.1.1.33		RJ-2342	2	2390	2	3	2397	2	0	462	2	466
			<b>5. 28775C&gt;T (N: P168S)</b>									
Lineage	Outbreak	Sample	A	C	G	T	num.reads					
B.1.1.33	Treinta y Tres	M49	5	53	3	924	985					
B.1.1.33	Treinta y Tres	M52	0	16	1	233	250					
B.1.1.33	Treinta y Tres	M53	3	14	1	200	218					
B.1.1.33	Treinta y Tres	M54	1	16	0	314	331					
B.1.1.33	Treinta y Tres	M57	8	49	1	926	984					
B.1.1.33	Treinta y Tres	M59	0	5	1	95	101					
B.1.1.33	Treinta y Tres	M60	2	7	0	191	200					
B.1.1.33	Treinta y Tres	M62	4	25	0	299	328					
B.1.1.33	Treinta y Tres	M63	4	24	2	352	382					
B.1.1.33	Treinta y Tres	M64	7	64	2	913	986					
B.1.1.33	Treinta y Tres	M65	2	21	3	290	316					
B.1.1.33	Treinta y Tres	M66	0	1	0	52	53					
B.1.1.33	Treinta y Tres	M67	1	3	0	24	28					
B.1.1.33	Treinta y Tres	M68	3	25	1	293	322					
B.1.1.33	Treinta y Tres	M69	5	39	2	453	499					
B.1.1.33	Treinta y Tres	M70	1	10	0	22	33					
B.1.1.33	Treinta y Tres	M71	1	12	0	161	174					
B.1.1.33	Treinta y Tres	M85	6	40	1	744	791					
B.1.1.33	Treinta y Tres	M87	5	70	4	904	983					
B.1.1.33	Treinta y Tres	M91	3	20	0	385	408					
B.1.1.33	Treinta y Tres	M93	7	41	0	934	982					
B.1.1.33	Treinta y Tres	M94	4	53	4	932	993					
B.1.1.33	Treinta y Tres	M95	2	22	0	312	336					
B.1.1.33	Treinta y Tres	M97	7	63	3	912	985					
B.1.1.33	Treinta y Tres	M98	6	33	1	550	590					
B.1.1.33	Treinta y Tres	M130	0	13	0	162	175					
B.1.1.33	Treinta y Tres	M132	0	13	1	171	185					
B.1.1.33	Treinta y Tres	M133	5	27	0	472	504					
B.1.1.33	Treinta y Tres	M135	4	36	0	638	678					
B.1.1.33	Treinta y Tres	M136	2	35	2	479	518					
B.1.1.33		RJ-2007	11	470	5	7	493					
B.1.1.33		RJ-2091	2	309	0	1	312					
B.1.1.33		RJ-2342	0	111	0	0	111					

**Table S6.** Within-host diversity BR-UY-I28. The table shows the observed allele count for each synapomorphic site identified in clade BR-UY-I28

Lineage	Outbreak	Sample	1. 1471C>T (ORF1ab: R402R)					2. 1519C>T (ORF1ab: N418N)				
			A	C	G	T	num.reads	A	C	G	T	num.reads
B.1.1.28	Bella Unión	M151	0	3	0	29	32	1	1	0	29	31



B.1.1.28	Bella Unión	M152	0	1	0	14	15	0	1	0	15	16	
B.1.1.28	Bella Unión	M163	1	4	2	43	50	3	1	1	45	50	
B.1.1.28	Bella Unión	M157	2	6	0	171	179	0	9	3	163	175	
			<b>3. 5995A&gt;G (ORF1ab: Q1910Q)</b>					<b>4. 9605T&gt;C (ORF1ab: F3114L)</b>					
Lineage	Outbreak	Sample	A	C	G	T	num.reads	A	C	G	T	num.reads	
B.1.1.28	Bella Unión	M151	23	0	171	1	195	1	201	0	14	216	
B.1.1.28	Bella Unión	M152	8	0	30	0	38	0	49	0	2	51	
B.1.1.28	Bella Unión	M163	1	0	7	0	8	0	4	0	0	4	
B.1.1.28	Bella Unión	M157	8	0	34	0	42	0	10	0	1	11	
			<b>5. 9693C&gt;T (ORF1ab: A3143V)</b>					<b>6. 15606T&gt;C (ORF1ab: N5113N)</b>					
Lineage	Outbreak	Sample	A	C	G	T	num.reads	A	C	G	T	num.reads	
B.1.1.28	Bella Unión	M151	0	6	0	213	219	0	20	0	1	21	
B.1.1.28	Bella Unión	M152	1	1	0	49	51	0	15	0	0	15	
B.1.1.28	Bella Unión	M163	0	0	0	4	4	1	288	0	18	307	
B.1.1.28	Bella Unión	M157	0	0	0	10	10	0	722	0	44	766	
			<b>7. 23416A&gt;T (Spike protein S1: T606T)</b>					<b>8. 26159T&gt;C (ORF3a: V256A)</b>					
Lineage	Outbreak	Sample	A	C	G	T	num.reads	A	C	G	T	num.reads	
B.1.1.28	Bella Unión	M151	2	0	5	65	72	6	884	0	53	943	
B.1.1.28	Bella Unión	M152	0	0	0	2	2	0	299	0	27	326	
B.1.1.28	Bella Unión	M163	37	27	42	845	951	0	59	0	3	62	
B.1.1.28	Bella Unión	M157	49	27	36	843	955	0	287	0	13	300	
			<b>9. 28508A&gt;T (N: S79C)</b>					<b>10. 29367C&gt;T (N: P365L)</b>					
Lineage	Outbreak	Sample	A	C	G	T	num.reads	A	C	G	T	num.reads	
B.1.1.28	Bella Unión	M151	17	7	2	453	479	0	59	2	554	615	
B.1.1.28	Bella Unión	M152	2	1	0	98	101	0	24	0	195	219	
B.1.1.28	Bella Unión	M163	14	6	1	642	663	3	32	1	391	427	
B.1.1.28	Bella Unión	M157	18	6	4	519	547	0	20	0	217	237	
			<b>11. 29737G&gt;T (3'-UTR)</b>										
Lineage	Outbreak	Sample	A	C	G	T	num.reads						
B.1.1.28	Bella Unión	M151	2	6	30	567	605						
B.1.1.28	Bella Unión	M152	0	3	7	203	213						
B.1.1.28	Bella Unión	M163	0	0	2	46	48						
B.1.1.28	Bella Unión	M157	0	0	0	3	3						

**Table S7.** Within-host diversity BR-RS-I33. The table shows the observed allele count for each synapomorphic site identified in clade BR-RS-I33

	<b>1. 15654C&gt;T (ORF1ab: D5129D)</b>				
Sample	A	C	G	T	num.reads
RS-15276	3	18	0	461	482
RS-15287	4	8	4	470	486
RS-6179	4	3	10	4130	4147
RS-6180	0	5	4	4997	5006
RS-6187	3	3	1	3193	3200
RS-6190	7	8	6	5780	5801
RS-6197	3	7	1	3805	3816
RS-6198	1	8	0	3045	3054
RS-6227	7	3	5	4325	4340
RS-6228	2	1	4	3072	3079

RS-6241	7	1	4	3997	4009
RS-6242	7	11	2	6566	6586

**Table S8.** Linear model. Obtained coefficients for the explanatory variables “SEQ”, “SAMPLE” and “MUTATION” are shown. For the calculations, the observations were filtered according to a minimum coverage of 100 reads. Allele frequencies and Shannon Entropy (H) were estimated. The linear model was implemented in R with `lm(formula = He1.4 ~ SEQ + SAMPLE + MUTATION, data = tab.f)`. Obtained Residual standard error was 0.1026 on 614 degrees of freedom. Multiple R-squared: 0.7267, Adjusted R-squared: 0.6844. F-statistic: 17.19 on 95 and 614 DF and p-value: < 2.2e-16. Coefficients: 3 not defined because of singularities. The formatted data for statistical analysis is available upon request.

Coefficient	Estimate	Std.Error	t value	Pr(> t )	
(Intercept)	0.4303370	0.1026450	4192	3.17e-05	***
SEQlonTorrent	-0.0197866	0.1076802	-184	0.854268	
SEQONT	0.3252601	0.1094966	2971	0.003089	**
SAMPLEM11	-0.0327176	0.0384724	-850	0.395425	
SAMPLEM119	-0.0405952	0.0468754	-866	0.386815	
SAMPLEM12	-0.0325717	0.0384724	-847	0.397534	
SAMPLEM13	-0.0203398	0.0384724	-529	0.597214	
SAMPLEM130	-0.0504425	0.0468708	-1076	0.282258	
SAMPLEM132	-0.0221382	0.0468708	-472	0.636863	
SAMPLEM133	-0.0174062	0.0460311	-378	0.705457	
SAMPLEM135	-0.0012343	0.0460311	-27	0.978616	
SAMPLEM136	-0.0207418	0.0460311	-451	0.652433	
SAMPLEM14	-0.0397404	0.0384724	-1033	0.302030	
SAMPLEM15	-0.0323473	0.0384724	-841	0.400791	
SAMPLEM151	0.0391147	0.1094966	357	0.721048	
SAMPLEM152	0.0178085	0.1313678	136	0.892212	
SAMPLEM154	-0.0464515	0.0479261	-969	0.332811	
SAMPLEM155	-0.0353734	0.0468708	-755	0.450719	
SAMPLEM157	0.0011578	0.1339953	9	0.993108	
SAMPLEM163	-0.0012125	0.1385434	-9	0.993020	
SAMPLEM40	-0.0674552	0.0460311	-1465	0.143316	
SAMPLEM43	-0.0522903	0.0468708	-1116	0.265018	
SAMPLEM49	-0.0428898	0.0460311	-932	0.351828	
SAMPLEM5	-0.0222417	0.0384724	-578	0.563394	
SAMPLEM52	-0.0338867	0.0491049	-690	0.490400	
SAMPLEM53	-0.0265017	0.0548308	-483	0.629029	
SAMPLEM54	-0.0667156	0.0491049	-1359	0.174762	
SAMPLEM57	-0.0293009	0.0460311	-637	0.524659	
SAMPLEM59	-0.0507807	0.0548308	-926	0.354740	
SAMPLEM60	-0.0216759	0.0525024	-413	0.679856	
SAMPLEM62	-0.0290056	0.0506147	-573	0.566809	
SAMPLEM63	0.0032653	0.0525024	62	0.950429	
SAMPLEM64	-0.0239212	0.0460311	-520	0.603478	
SAMPLEM65	0.0153287	0.0469325	327	0.744074	
SAMPLEM66	0.0124419	0.0479299	260	0.795271	
SAMPLEM67	-0.0153023	0.0479299	-319	0.749634	
SAMPLEM68	0.0164567	0.0469325	351	0.725974	
SAMPLEM69	0.0081191	0.0469325	173	0.862711	
SAMPLEM70	-0.0241049	0.0479299	-503	0.615200	
SAMPLEM71	0.0253492	0.0469325	540	0.589310	
SAMPLEM72	-0.0396576	0.0468708	-846	0.397824	

SAMPLEM73	-0.0919521	0.0506220	-1816	0.069790	.
SAMPLEM79	-0.0972276	0.0478620	-2031	0.042643	*
SAMPLEM8	0.0030301	0.0390998	77	0.938255	
SAMPLEM85	-0.0522872	0.0460311	-1136	0.256437	
SAMPLEM87	-0.0082634	0.0460311	-180	0.857591	
SAMPLEM9	-0.0162466	0.0419046	-388	0.698369	
SAMPLEM91	-0.0347698	0.0460311	-755	0.450326	
SAMPLEM93	-0.0453471	0.0460311	-985	0.324943	
SAMPLEM94	-0.0351558	0.0460311	-764	0.445316	
SAMPLEM95	-0.0388039	0.0460311	-843	0.399561	
SAMPLEM97	-0.0211658	0.0460311	-460	0.645812	
SAMPLEM98	-0.0535552	0.0460311	-1163	0.245096	
SAMPLERJ-2007	-0.0576248	0.0460311	-1252	0.211095	
SAMPLERJ-2091	0.0617864	0.1076802	574	0.566317	
SAMPLERJ-2342	0.0708355	0.1076802	658	0.510893	
SAMPLERS-15273	0.0198147	0.1076802	184	0.854063	
SAMPLERS-15276	-0.0221979	0.1094966	-203	0.839416	
SAMPLERS-15280	-0.0322250	0.0469308	-687	0.492563	
SAMPLERS-15287	-0.0401016	0.1094966	-366	0.714315	
SAMPLERS-6177	0.1111980	0.1076802	1033	0.302166	
SAMPLERS-6179	0.0296736	0.1451619	204	0.838095	
SAMPLERS-6180	-0.0473636	0.1451619	-326	0.744323	
SAMPLERS-6187	-0.0263455	0.1451619	-181	0.856043	
SAMPLERS-6188	0.0840227	0.1098865	765	0.444785	
SAMPLERS-6190	0.0190182	0.1451619	131	0.895807	
SAMPLERS-6197	-0.0045496	0.1451619	-31	0.975007	
SAMPLERS-6198	-0.0084149	0.1451619	-58	0.953792	
SAMPLERS-6203	0.0610583	0.1092096	559	0.576302	
SAMPLERS-6208	0.1998152	0.1086602	1839	0.066413	.
SAMPLERS-6222	0.0402799	0.1076802	374	0.708481	
SAMPLERS-6227	0.0143911	0.1451619	99	0.921061	
SAMPLERS-6228	-0.0234911	0.1451619	-162	0.871496	
SAMPLERS-6231	0.0621493	0.1080440	575	0.565352	
SAMPLERS-6241	-0.0008945	0.1451619	-6	0.995085	
SAMPLERS-6242	NA	NA	NA	NA	
MUTATIONA2276G	-0.0517600	0.0197703	-2618	0.009061	**
MUTATIONA23416T	0.1563496	0.1454285	1075	0.282754	
MUTATIONA28508T	-0.0300958	0.1244753	-242	0.809031	
MUTATIONA5089G	0.0710363	0.0210444	3376	0.000783	***
MUTATIONA5995G	0.0778204	0.1451619	536	0.592088	
MUTATIONC12025T	-0.1550629	0.0193689	-8006	5.96e-15	***
MUTATIONC1471T	-0.0092689	0.1644299	-56	0.955065	
MUTATIONC15108T	0.0069632	0.0198457	351	0.725810	
MUTATIONC1519T	0.0521031	0.1644299	317	0.751449	
MUTATIONC15654T	NA	NA	NA	NA	
MUTATIONC18252T	-0.0221625	0.0193604	-1145	0.252765	
MUTATIONC28093T	-0.0954197	0.0195788	-4874	1.40e-06	***
MUTATIONC28775T	0.0639506	0.0199810	3201	0.001442	**
MUTATIONC29367T	0.0602654	0.1244753	484	0.628448	
MUTATIONC8293T	-0.0568249	0.0202967	-2800	0.005276	**
MUTATIONC9693T	-0.1304916	0.1451619	-899	0.369038	
MUTATIONG189T	-0.1314978	0.0196020	-6708	4.47e-11	***

MUTATIONG23311T	-0.1833839	0.0190945	-9604	2.00E-016	***
MUTATIONG24872T	-0.0518007	0.0190176	-2724	0.006636	**
MUTATIONG29737T	-0.0091636	0.1308472	-70	0.944190	
MUTATIONI15606C	0.0084781	0.1454285	58	0.953531	
MUTATIONI26159C	-0.0068957	0.1260216	-55	0.956381	
MUTATIONI9605C	NA	NA	NA	NA	

**Table S9. GISAID acknowledgement table for B.1.1.33 sequences**



We gratefully acknowledge the following Authors from the Originating laboratories responsible for obtaining the specimens, as well as the Submitting laboratories where the genome data were generated and shared via GISAID, on which this research is based.

All Submitters of data may be contacted directly via [www.gisaid.org](http://www.gisaid.org)

Accession ID	Originating Laboratory	Submitting Laboratory	Authors
EPI_ISL_418371 EPI_ISL_425171	Public Health Ontario Laboratories University of Wisconsin-Madison AIDS Vaccine Research Laboratories	Public Health Ontario Laboratories University of Wisconsin-Madison AIDS Vaccine Research Laboratories	Alireza Eshaghi, Samir N Patel, Jonathan B Gubbay, Vanessa E Allen, Christine Frantz, Amin Li, Sandeep Nagra Gage Moreno, Katarina Braun, et al. AIDS Vaccine Research Laboratories
EPI_ISL_425373	Department of Pathology, University of Cambridge	COVID-19 Genomics UK (COG-UK) Consortium	Luke W Meredith, M. Esteve Torok, Myra Hosmillo, William L Hamilton, Martin D. Curran, Theresa Feltwell, Ana Yakovleva, Charlotte J. Holdcroft, Aminu S. Jahon, Sarah L. Caddy, Ian Goodfellow
EPI_ISL_426899	Royal Darwin Hospital Pathology	Microbiological Diagnostic Unit Public Health Laboratory and Victorian Infectious Diseases Reference Laboratory, Doherty Institute	Meumann, E., Caley L., Seemann T., Salt, M., Schultz M., Druce J., Sherry, N.
EPI_ISL_427131	Victorian Infectious Diseases Reference Laboratory (VIDRL)	Microbiological Diagnostic Unit Public Health Laboratory and Victorian Infectious Diseases Reference Laboratory, Doherty Institute	Caley L., Seemann T., Salt, M., Schultz M., Druce J., Sherry, N.
EPI_ISL_427294, EPI_ISL_427295, EPI_ISL_427296, EPI_ISL_427297, EPI_ISL_427298, EPI_ISL_427302, EPI_ISL_427303, EPI_ISL_427304	Instituto Oswaldo Cruz FIOCRUZ - Laboratory of Respiratory Viruses and Measles (LVRV)	Instituto Oswaldo Cruz FIOCRUZ - Laboratory of Respiratory Viruses and Measles (LVRV)	Paola Resende, Fernando Motta, Luciana Appolinario, Sunando Roy, Aline Mattos, Milene Miranda, Cristiana Garcia, Bráulio Caetano, Maria Ogzrzwaiska, Priscilla Born, Jonathan Lopes, Marilda Siqueira
EPI_ISL_428294	University of Wisconsin-Madison AIDS Vaccine Research Laboratories	University of Wisconsin-Madison AIDS Vaccine Research Laboratories	Gage Moreno, Katarina Braun, et al. AIDS Vaccine Research Laboratories
EPI_ISL_430814, EPI_ISL_430815, EPI_ISL_430817	Laboratorio de Virología del Hospital de Niños Dr. Ricardo Gutiérrez	Área de Secuenciación del Laboratorio de Virología del Hospital de Niños Dr. Ricardo Gutiérrez	Nabaez Jodar, MS, Goya, S, Natale, M, Lusso, S, Gravis, E, Mitichenko, AS, Valinotto, LE, Viegas, M.
EPI_ISL_434803	Houston Methodist Hospital	Houston Methodist Hospital	S. Wesley Long, Randall J. Olsen, Paul A. Christensen, David W. Bernard, James J. Davis, Maaili Shakila, Marcus Nguyen, Matthew Ojeda Saavedra, Concepcion C. Carriz, Prasanti Yerramilli, Layne Pruitt, Sishir Subedi, Heather Hendrickson, Ghazali Ekandari, Muthiah Kumaraswami, Jason S. McMillan, Nahan Jonsson, Karl Stefansson, and James M. Musser
EPI_ISL_436853, EPI_ISL_437100	Michigan Department of Health and Human Services, Bureau of Laboratories LW Virology Lab NYU Langone Health	Michigan Department of Health and Human Services, Bureau of Laboratories LW Virology Lab Departments of Pathology and Medicine, New York University School of Medicine	Paola Resende, Fernando Motta, Luciana Appolinario, Sunando Roy, Aline Mattos, Milene Miranda, Cristiana Garcia, Bráulio Caetano, Maria Ogzrzwaiska, Priscilla Born, Jonathan Lopes, Marilda Siqueira Blankenship HM, Riner D, Soehnlen MK
EPI_ISL_443549 EPI_ISL_443552 EPI_ISL_443562	HOSPITAL SAN JUAN DE DIOS HOSPITAL DEL PROFESOR BUPA SERVICIOS CLINICOS S.A	Instituto de Salud Publica de Chile Instituto de Salud Publica de Chile Instituto de Salud Publica de Chile	María Aguiar-Rosenfeld, Brendan Belovarac, Margaret Black, Ludovic Boyard, John Cadney, Paolo Cutzta, John Chan, Dacia Dimgir, Xuebin Feng, Tayana Gindin, Emily Guzman, Adriana Heguy, Megan Hogan, Emily Huang, George Jour, Alireza Khodadadi-Jamayan, Lawrence H. Lin, Raven Luther, Andrea Lyde, Christian Marler, Matthew T. Maurano, Mark J. Mulligan, Peter Meyer, Raquel Ojeda-Correa, Imran Danish, Jared Pinnell, Vanessa Raabe, Sihararam Ramaswami, Any Rakpiewicz, Andre M. Ribeiro-de-Santos, Maria Samartino-Golden, Antonio Serrano, Guzman Shen, Maria Skudelny, Theodore Voulgariakaki, Nick Vlahos, Gae Westby, Paul Zappale, Taining Zhang
EPI_ISL_445367 EPI_ISL_445369, EPI_ISL_445370	ASISTENCIA PUBLICA DR.ALEJANDRO DEL RIO HOSPITAL DE CARABINEROS	Instituto de Salud Publica de Chile Instituto de Salud Publica de Chile	Andrés E Castillo, Bárbara Parra-Paz Tapia, Jaime Lagos, Loredana Arata, Alejandra Acevedo, Winston Andrade, Gabriel Leal, Carolina Tambley, Patricia Bustos, Rodrigo Fasce, Jorge Fernandez Andrés E Castillo, Bárbara Parra-Paz Tapia, Jaime Lagos, Loredana Arata, Alejandra Acevedo, Winston Andrade, Gabriel Leal, Carolina Tambley, Patricia Bustos, Rodrigo Fasce, Jorge Fernandez
EPI_ISL_445373 EPI_ISL_450873 EPI_ISL_450874 EPI_ISL_451158	HOSPITAL SAN JUAN DE DIOS Evandro Chagas Institute Evandro Chagas Institute Medlab Pathology	Instituto de Salud Publica de Chile Evandro Chagas Institute Evandro Chagas Institute	Andrés E Castillo, Bárbara Parra-Paz Tapia, Jaime Lagos, Loredana Arata, Alejandra Acevedo, Winston Andrade, Gabriel Leal, Carolina Tambley, Patricia Bustos, Rodrigo Fasce, Jorge Fernandez Santos, M.C.; Silva, A.M.; Junior, W.D.C.; Barbagelata, L.S.; Ferreira, J.A.; Sousa, E.M.A.; da Silva, P.S.; Martins, L.C.; Sousa Junior, E.C.; Viana, G.M.R
EPI_ISL_451158	Medlab Pathology	NSW Health Pathology - Institute of Clinical Pathology and Medical Research, Westmead Hospital, University of Sydney	Santos, M.C.; Silva, A.M.; Junior, W.D.C.; Barbagelata, L.S.; Ferreira, J.A.; Sousa, E.M.A.; da Silva, P.S.; Martins, L.C.; Sousa Junior, E.C.; Viana, G.M.R CDM-PH et al.
EPI_ISL_451194	Childrens Hospital Westmead	NSW Health Pathology - Institute of Clinical Pathology and Medical Research, Westmead Hospital, University of Sydney	CDM-PH et al.
EPI_ISL_452318	Michigan Department of Health and Human Services, Bureau of Laboratories	Michigan Department of Health and Human Services, Bureau of Laboratories	Blankenship HM, Riner D, Soehnlen MK
EPI_ISL_454027, EPI_ISL_454172, EPI_ISL_454311, EPI_ISL_454316	UPMC Clinical Microbiology Laboratory	Microbial Genome Sequencing Center, Microbial Genomic Epidemiological Laboratory	Borges et al
EPI_ISL_456071, EPI_ISL_456072, EPI_ISL_456073, EPI_ISL_456074, EPI_ISL_456075	Laboratory of Respiratory Viruses and Measles, Oswaldo Cruz Institute, FIOCRUZ	Laboratory of Respiratory Viruses and Measles, Oswaldo Cruz Institute, FIOCRUZ	Mustapha M. Matapha, Jane W. Marsh, Dan Snyder, Marissa P. Griffith, Stephanie L. Mitchell, Vatsala R. Srinivasa, Katy D. Waggle, Chinedu Ezenwaku, Vaughn S. Cooper, Lee H. Harrison
EPI_ISL_456076, EPI_ISL_456077	LACEN RJ - Laboratório Central de Saúde Pública Noel Nutels	Laboratory of Respiratory Viruses and Measles, Oswaldo Cruz Institute, FIOCRUZ	Paola Resende, Luciana Appolinario, Fernando Motta, Aline Mattos, Milene Miranda, Cristiana Garcia, Bráulio Caetano, Maria Ogzrzwaiska, Jonathan Lopes, Marilda Siqueira
EPI_ISL_456078, EPI_ISL_456080, EPI_ISL_456081	Laboratory of Respiratory Viruses and Measles, Oswaldo Cruz Institute, FIOCRUZ	Laboratory of Respiratory Viruses and Measles, Oswaldo Cruz Institute, FIOCRUZ	Paola Resende, Luciana Appolinario, Fernando Motta, Aline Mattos, Milene Miranda, Cristiana Garcia, Bráulio Caetano, Maria Ogzrzwaiska, Jonathan Lopes, Marilda Siqueira
EPI_ISL_456082, EPI_ISL_456083	LACEN RJ - Laboratório Central de Saúde Pública Noel Nutels	Laboratory of Respiratory Viruses and Measles, Oswaldo Cruz Institute, FIOCRUZ	Paola Resende, Luciana Appolinario, Fernando Motta, Aline Mattos, Milene Miranda, Cristiana Garcia, Bráulio Caetano, Maria Ogzrzwaiska, Jonathan Lopes, Marilda Siqueira
EPI_ISL_456084, EPI_ISL_456085, EPI_ISL_456086, EPI_ISL_456087, EPI_ISL_456089, EPI_ISL_456090, EPI_ISL_456091, EPI_ISL_456092, EPI_ISL_456093, EPI_ISL_456094, EPI_ISL_456095, EPI_ISL_456096, EPI_ISL_456097, EPI_ISL_456098, EPI_ISL_456099, EPI_ISL_456100, EPI_ISL_456101, EPI_ISL_456102, EPI_ISL_456103, EPI_ISL_456104, EPI_ISL_456105, EPI_ISL_456106	Laboratory of Respiratory Viruses and Measles, Oswaldo Cruz Institute, FIOCRUZ	Laboratory of Respiratory Viruses and Measles, Oswaldo Cruz Institute, FIOCRUZ	Paola Resende, Luciana Appolinario, Fernando Motta, Aline Mattos, Milene Miranda, Cristiana Garcia, Bráulio Caetano, Maria Ogzrzwaiska, Jonathan Lopes, Marilda Siqueira
EPI_ISL_457796	Johns Hopkins Hospital Department of Pathology	Johns Hopkins Hospital Department of Pathology	Peter M. Thielen, Thomas Mehoke, Shirlee Wahl, Sridhar Ramakrishnan, Melanie Kirsche, Amanda Erlund, Craig Hewser, Kristina Zudocz, Olusuwon Falade-Nwulia, Norah Sadovaki, Paul Morris, Mark Hopkins, Yurfan Fan, Nida Trowa, Victoria Gniazdowski, Michael C. Schatz, Stuart C. Ray, Winston Timp, Hebo H. Mostafa
EPI_ISL_457953	Laboratorio de Biología Molecular Asociación Española Primera en Salud Evandro Chagas Institute	Departments of Pathology and Medicine, New York University School of Medicine Evandro Chagas Institute	Maria Victoria Elizondo, Maria Noel Zubillaga, Gonzalo Marrufo, Paul Zappale, Gae Westby, Matthew T Maurano, Christian Marler, Adriana Heguy Santos, M.C.; Silva, A.M.; Junior, W.D.C.; Barbagelata, L.S.; Ferreira, J.A.; Sousa, E.M.A.; da Silva, P.S.; Resque, H.R.; Martins, L.C.; Sousa Junior, E.C.; Viana, G.M.R
EPI_ISL_458138, EPI_ISL_458139, EPI_ISL_458140, EPI_ISL_458141, EPI_ISL_458142, EPI_ISL_458143, EPI_ISL_458144, EPI_ISL_458145, EPI_ISL_458148, EPI_ISL_458149	Massachusetts General Hospital	Infectious Disease Program, Broad Institute of Harvard and MIT	Lemieux, E., Siddik, K.J., Shaw, B., Adams, G., Pierce, V., Turbett, S., Anahita, M., Brands, J., Slater, D., Harris, J., Lin, A. E., Gladden-Young, A., Lagerborg, K., Rudy, M., DeRuoff, K., Carter, A., Normandin, E., Bauer, M., Reilly, S., Tomkins-Tinch, C., Loreth, C., Chaiwadi, S., Neumann, A., Cusick, C., Chapman, S. B., Orlin, A., Flowers, C., Carrizo, F., Birren, B. W., Gallagher, G., Smith, S., Park, D. J., MacIntyre, B. L., Ryan, E., LaRoque, R., Rosenberg, E., Saberi, P. C.
EPI_ISL_460134, EPI_ISL_460202, EPI_ISL_460215, EPI_ISL_460236, EPI_ISL_460403	Respiratory Virus Unit, Microbiology Services Colindale, Public Health England	Respiratory Virus Unit, Microbiology Services Colindale, Public Health England	PHE Covid Sequencing Team
EPI_ISL_467345, EPI_ISL_467347, EPI_ISL_467348, EPI_ISL_467349, EPI_ISL_467350, EPI_ISL_467351, EPI_ISL_467352, EPI_ISL_467353, EPI_ISL_467354, EPI_ISL_467355, EPI_ISL_467357, EPI_ISL_467358, EPI_ISL_467359, EPI_ISL_467360, EPI_ISL_467361, EPI_ISL_467362, EPI_ISL_467363, EPI_ISL_467364, EPI_ISL_467365, EPI_ISL_467366, EPI_ISL_467367, EPI_ISL_467368, EPI_ISL_467369, EPI_ISL_467370, EPI_ISL_467371	Laboratory of Respiratory Viruses and Measles, Oswaldo Cruz Institute, FIOCRUZ	Laboratory of Respiratory Viruses and Measles, Oswaldo Cruz Institute, FIOCRUZ	Paola Resende, Luciana Appolinario, Fernando Motta, Ana Carolina Paixão, Ana Carolina Mendonça, Aline Mattos, Milene Miranda, Cristiana Garcia, Bráulio Caetano, Maria Ogzrzwaiska, Jonathan Lopes, Marilda Siqueira

**Table S10. GISAID acknowledgement table for B.1.1.28 sequences**

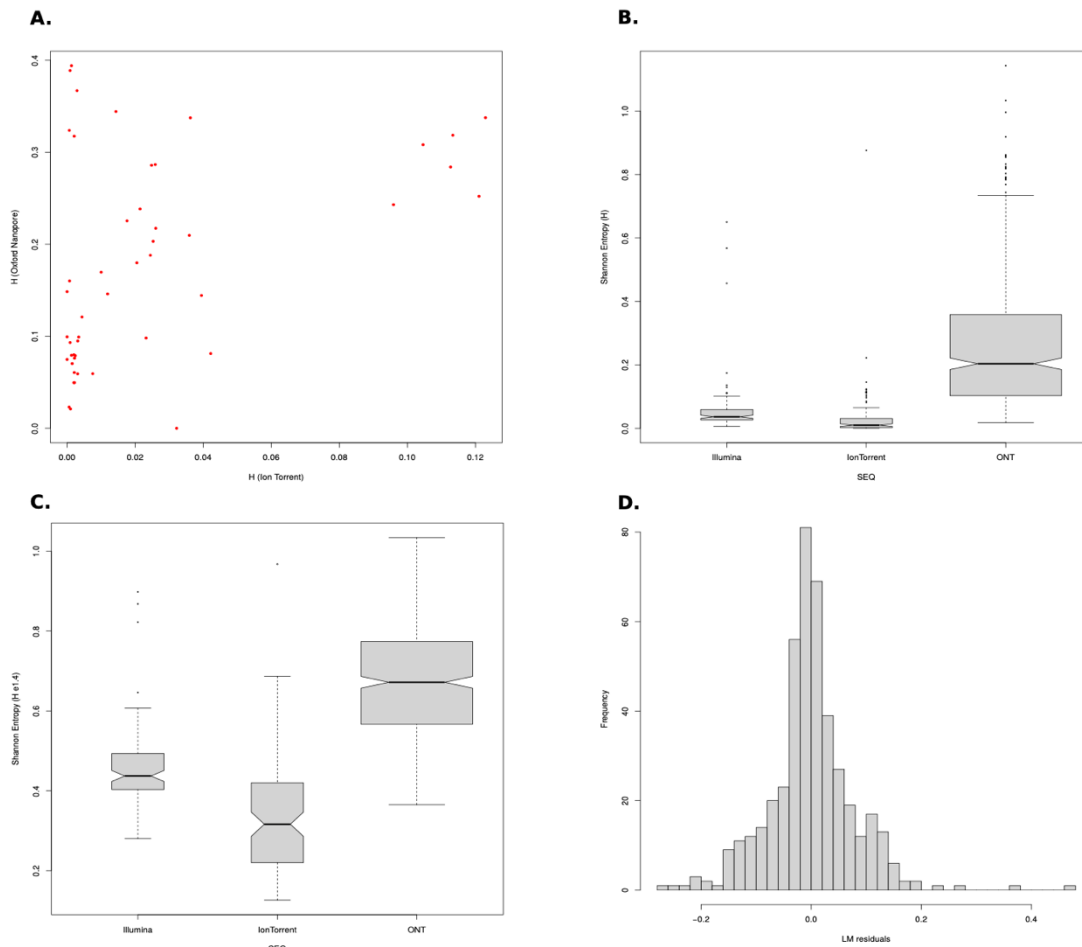


We gratefully acknowledge the following Authors from the Originating Laboratories responsible for obtaining the specimens, as well as the Submitting Laboratories where the genome data were generated and shared via GISAID, on which this research is based.

All Submitters of data may be contacted directly via [www.gisaid.org](http://www.gisaid.org)

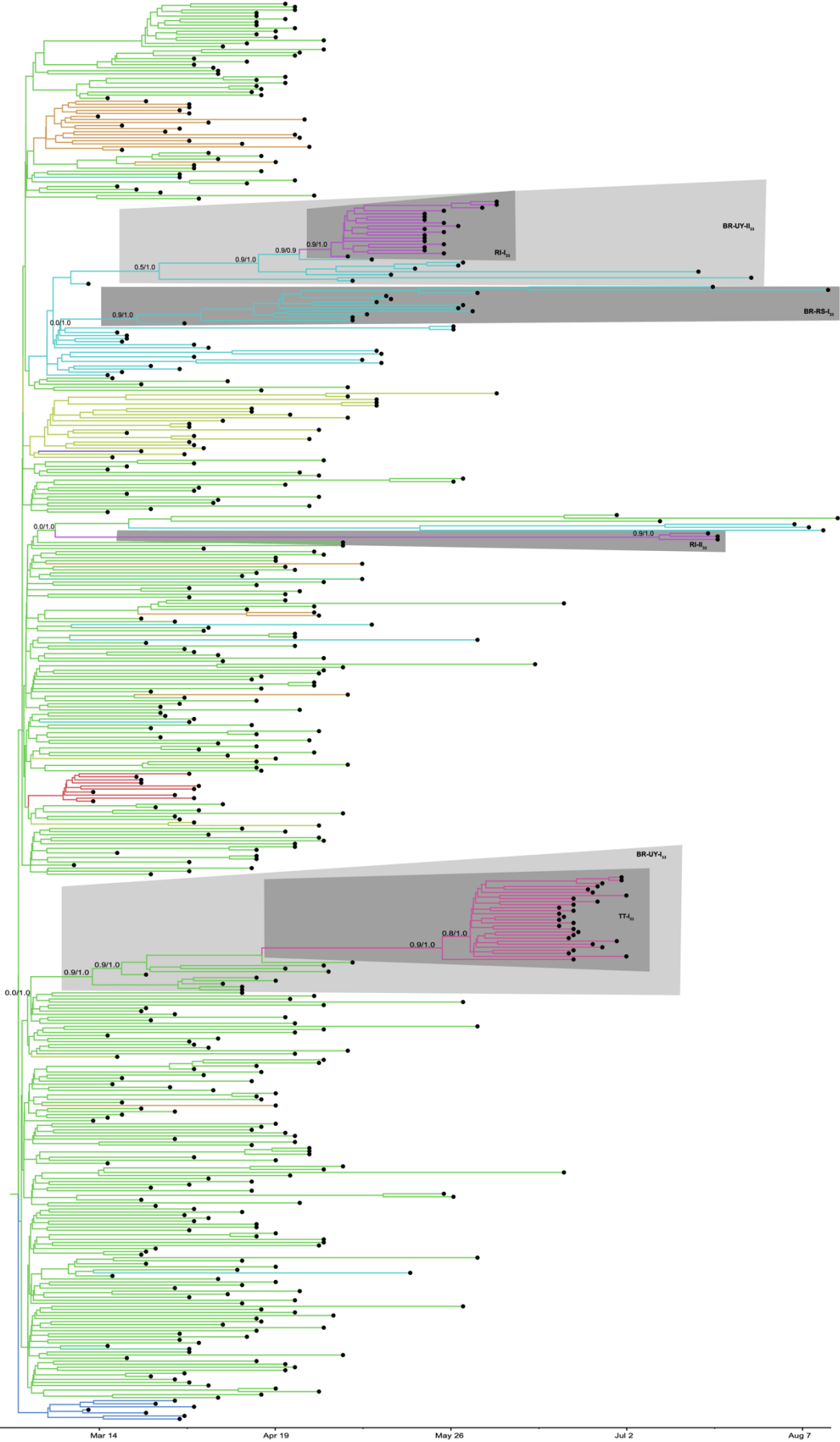
Accession ID	Originating Laboratory	Submitting Laboratory	Authors
EPI_ISL_416036	National Influenza Center - Instituto Adolfo Lutz	Instituto Adolfo Lutz, Interdisciplinary Procedures Center, Strategic Laboratory	Claudio Tavares Sacchi, Claudia Regina Gonçalves, Carlos Henrique Camargo, Erica Valessa Ramos Gomes, Fabiana Cristina Pereira dos Santos, Daniela Bernardes Borges da Silva, Simone Guadagnucci Morillo, Adriano Abbud, Adriana Bugni, Maria do Carmo Sampaio Tavares Timenetzky, Terézinha Maria de Paiva
EPI_ISL_427292	LACEN-AL - Laboratório Central de Alagoas	Instituto Oswaldo Cruz FIOCRUZ, Laboratory of Respiratory Viruses and Measles (LWMS)	Paola Resende, Fernando Motta, Luciana Apolinário, Susando Roy, Aline Mattos, Milene Miranda, Cristiana Garcia, Bráulio Caetano, Maria Ogrzewalska, Píscilla Born, Jonathan Lopes, Marilda Siqueira
EPI_ISL_431180, EPI_ISL_431240	Fujian Center for Disease Control and Prevention	Fujian Center for Disease Control and Prevention	Lin Qi, Huang Zhimiao, Zhang Yanna, Weng Yuwei
EPI_ISL_445380	Ramathibhodi Hospital	COVID-19 Network Investigations (CONI) Alliance	Elizabeth Batty, Wasun Chartrattita, Thanat Chookijern, Stefan Fernandez, Angkana Huang, Anthony R. Jones, Khaphin Jonsalak, Chonticha Klungtong, Theerasart Kochakarn, Namfon Kotanan, Kittikom Kumpornsin, Wudichai Manasatienkij, Bhakthboom Panthan, Ekawat Pasomsab, Kingkan Rakmanee, Insee Sersorn, Janjira Thaipadungpanit, Arporn Wangwawatin, Treewat Wattanachochchai
EPI_ISL_456088	LACEN RJ - Laboratório Central de Saúde Pública Noel Nutre	Laboratory of Respiratory Viruses and Measles, Oswaldo Cruz Institute, FIOCRUZ	Paola Resende, Luciana Apolinário, Fernando Motta, Aline Mattos, Milene Miranda, Cristiana Garcia, Bráulio Caetano, Maria Ogrzewalska, Jonathan Lopes, Marilda Siqueira
EPI_ISL_456889	West of Scotland Specialist Virology Centre, NHSGGC / MRC-University of Glasgow Centre for Virus Research	COVID-19 Genomics UK (COG-UK) Consortium	Ana da Silva Filipe, Natacha Johnson, Kathy Smollett, Daniel Mair, Stephen Carmichael, Lily Tong, Jenna Nichols, Eilhu Aranday-Cortes, Kirstyn Brunker, Yasmin Parr, Kyriaki Nomioku, Sarah McDonald, Marc Nebel, Patawee Asamaphan, Richard Orton, Joseph Hughes, Sreenu Vattipally, David L. Robertson, Alastair MacLean, Rory Gunson, Kathy L. Natasha Jessudason, Rajiv Shah, James Shepherd, Antonia Ho, Emma Thomson
EPI_ISL_458140, EPI_ISL_458141, EPI_ISL_458146, EPI_ISL_458147	Evaristo Chagas Institute	Evaristo Chagas Institute	Santos, M.C.; Silva, A.M.; Junior, W.D.C.; Barbalho, L.S.; Ferreira, J.A.; Sousa, F.M.A.; da Silva, P.S.; Resque, H.S.; Martins, L.C.; Sousa Junior, E.C.; Viana, G.M.B.
EPI_ISL_461606, EPI_ISL_461678	West of Scotland Specialist Virology Centre, NHSGGC / MRC-University of Glasgow Centre for Virus Research	COVID-19 Genomics UK (COG-UK) Consortium	Ana da Silva Filipe, Natacha Johnson, Kathy Smollett, Daniel Mair, Stephen Carmichael, Lily Tong, Jenna Nichols, Eilhu Aranday-Cortes, Kirstyn Brunker, Yasmin Parr, Kyriaki Nomioku, Sarah McDonald, Marc Nebel, Patawee Asamaphan, Richard Orton, Joseph Hughes, Sreenu Vattipally, David L. Robertson, Alastair MacLean, Rory Gunson, Kathy L. Natasha Jessudason, Rajiv Shah, James Shepherd, Antonia Ho, Emma Thomson
EPI_ISL_467356, EPI_ISL_467359, EPI_ISL_467366	Laboratory of Respiratory Viruses and Measles, Oswaldo Cruz Institute, FIOCRUZ	Laboratory of Respiratory Viruses and Measles, Oswaldo Cruz Institute, FIOCRUZ	Paola Resende, Luciana Apolinário, Fernando Motta, Ana Carolina Paisão, Ana Carolina Mendonça, Aline Mattos, Milene Miranda, Cristiana Garcia, Bráulio Caetano, Maria Ogrzewalska, Jonathan Lopes, Marilda Siqueira
EPI_ISL_468305, EPI_ISL_468307	Centro de Vigilância à Saúde de Diadema	Instituto Adolfo Lutz, Interdisciplinary Procedures Center, Strategic Laboratory	Claudio Tavares Sacchi, Claudia Regina Gonçalves, Erica Valessa Ramos Gomes
EPI_ISL_468308	Hospital Municipal do Tatupá Carmo Carcicho	Instituto Adolfo Lutz, Interdisciplinary Procedures Center, Strategic Laboratory	Claudio Tavares Sacchi, Claudia Regina Gonçalves, Erica Valessa Ramos Gomes
EPI_ISL_468311, EPI_ISL_468312	Hospital Municipal Dr Ignacio Proenca de Gouvea	Instituto Adolfo Lutz, Interdisciplinary Procedures Center, Strategic Laboratory	Claudio Tavares Sacchi, Claudia Regina Gonçalves, Erica Valessa Ramos Gomes
EPI_ISL_468313	Vigilância Epidemiológica de São Bernardo do Campo	Instituto Adolfo Lutz, Interdisciplinary Procedures Center, Strategic Laboratory	Claudio Tavares Sacchi, Claudia Regina Gonçalves, Erica Valessa Ramos Gomes
EPI_ISL_468314	CTA Centro de Testagem e Aconselhamento	Instituto Adolfo Lutz, Interdisciplinary Procedures Center, Strategic Laboratory	Claudio Tavares Sacchi, Claudia Regina Gonçalves, Erica Valessa Ramos Gomes
EPI_ISL_468315	Hospital Municipal do Tatupá Carmo Carcicho	Instituto Adolfo Lutz, Interdisciplinary Procedures Center, Strategic Laboratory	Claudio Tavares Sacchi, Claudia Regina Gonçalves, Erica Valessa Ramos Gomes
EPI_ISL_468316	UPA Via Assis	Instituto Adolfo Lutz, Interdisciplinary Procedures Center, Strategic Laboratory	Claudio Tavares Sacchi, Claudia Regina Gonçalves, Erica Valessa Ramos Gomes
EPI_ISL_468318	Hospital Universitário da USP	Instituto Adolfo Lutz, Interdisciplinary Procedures Center, Strategic Laboratory	Claudio Tavares Sacchi, Claudia Regina Gonçalves, Erica Valessa Ramos Gomes
EPI_ISL_468319	Vigilância Epidemiológica de São Bernardo do Campo	Instituto Adolfo Lutz, Interdisciplinary Procedures Center, Strategic Laboratory	Claudio Tavares Sacchi, Claudia Regina Gonçalves, Erica Valessa Ramos Gomes
EPI_ISL_468321	Hospital Universitário da USP	Instituto Adolfo Lutz, Interdisciplinary Procedures Center, Strategic Laboratory	Claudio Tavares Sacchi, Claudia Regina Gonçalves, Erica Valessa Ramos Gomes
EPI_ISL_470600, EPI_ISL_470602, EPI_ISL_470604, EPI_ISL_470605, EPI_ISL_470608, EPI_ISL_470610, EPI_ISL_470612, EPI_ISL_470638	Hermes Pardini Laboratório de Virologia Molecular / UF RJ	Bioinformatics Laboratory / LINC	Alexandra Gerber, Ana Paula Guimarães, Luiz Gonzaga Paula de Almeida, Ronaldo da Silva Francisco Junior, Mariana Talon, Filipe Romero, Átila Duque Rossi, Terézinha Marta Pereira, working group UF RJ, Jaqueline Goes de Jesus, Ingra Moraes Claro, Ester Cereira Sabino, Nuno Rodrigues Faria, CADDE group, Laboratório Hermes Pardini, Laboratório Simile, working group UFMG, Amílcar Tanuri, Carolina Veloch, Renato Sartana Aguiar e Ana Tereza Vasconcelos
EPI_ISL_470651, EPI_ISL_470653, EPI_ISL_470654	Hermes Pardini	Bioinformatics Laboratory / LINC	Alexandra Gerber, Ana Paula Guimarães, Luiz Gonzaga Paula de Almeida, Ronaldo da Silva Francisco Junior, Mariana Talon, Filipe Romero, Átila Duque Rossi, Terézinha Marta Pereira, working group UF RJ, Jaqueline Goes de Jesus, Ingra Moraes Claro, Ester Cereira Sabino, Nuno Rodrigues Faria, CADDE group, Laboratório Hermes Pardini, Laboratório Simile, working group UFMG, Amílcar Tanuri, Carolina Veloch, Renato Sartana Aguiar e Ana Tereza Vasconcelos
EPI_ISL_471539	Hospital Universitário da USP São Paulo	Instituto Adolfo Lutz, Interdisciplinary Procedures Center, Strategic Laboratory	Claudio Tavares Sacchi, Claudia Regina Gonçalves, Erica Valessa Ramos Gomes
EPI_ISL_471541	Hospital Geral Santa Marcelina	Instituto Adolfo Lutz, Interdisciplinary Procedures Center, Strategic Laboratory	Claudio Tavares Sacchi, Claudia Regina Gonçalves, Erica Valessa Ramos Gomes
EPI_ISL_471545	Hospital São Paulo de Ensino da Unifesp	Instituto Adolfo Lutz, Interdisciplinary Procedures Center, Strategic Laboratory	Claudio Tavares Sacchi, Claudia Regina Gonçalves, Erica Valessa Ramos Gomes
EPI_ISL_471546	AMA DR Jose Soares Hungria	Instituto Adolfo Lutz, Interdisciplinary Procedures Center, Strategic Laboratory	Claudio Tavares Sacchi, Claudia Regina Gonçalves, Erica Valessa Ramos Gomes
EPI_ISL_471548	Hospital do Servidor Público Estadual Francisco Morato de Oliveira	Instituto Adolfo Lutz, Interdisciplinary Procedures Center, Strategic Laboratory	Claudio Tavares Sacchi, Claudia Regina Gonçalves, Erica Valessa Ramos Gomes
EPI_ISL_471549	Hospital Municipal Carmen Prudente	Instituto Adolfo Lutz, Interdisciplinary Procedures Center, Strategic Laboratory	Claudio Tavares Sacchi, Claudia Regina Gonçalves, Erica Valessa Ramos Gomes
EPI_ISL_471552	Hospital Santa Maggiore	Instituto Adolfo Lutz, Interdisciplinary Procedures Center, Strategic Laboratory	Claudio Tavares Sacchi, Claudia Regina Gonçalves, Erica Valessa Ramos Gomes
EPI_ISL_471556	Pronto Socorro Jose Brabin	Instituto Adolfo Lutz, Interdisciplinary Procedures Center, Strategic Laboratory	Claudio Tavares Sacchi, Claudia Regina Gonçalves, Erica Valessa Ramos Gomes
EPI_ISL_471562, EPI_ISL_471581, EPI_ISL_471582	Hosp. Municipal Prof. Dr. Alípio Cordeá Netto	Instituto Adolfo Lutz, Interdisciplinary Procedures Center, Strategic Laboratory	Claudio Tavares Sacchi, Claudia Regina Gonçalves, Erica Valessa Ramos Gomes
EPI_ISL_471647	Hospital Municipal de Barueri Dr. Francisco Moran	Instituto Adolfo Lutz, Interdisciplinary Procedures Center, Strategic Laboratory	Claudio Tavares Sacchi, Claudia Regina Gonçalves, Erica Valessa Ramos Gomes
EPI_ISL_471648	UBS e Pronto Socorro Jd Jacira	Instituto Adolfo Lutz, Interdisciplinary Procedures Center, Strategic Laboratory	Claudio Tavares Sacchi, Claudia Regina Gonçalves, Erica Valessa Ramos Gomes
EPI_ISL_473651	West of Scotland Specialist Virology Centre, NHSGGC / MRC-University of Glasgow Centre for Virus Research	COVID-19 Genomics UK (COG-UK) Consortium	Ana da Silva Filipe, Natacha Johnson, Kathy Smollett, Daniel Mair, Stephen Carmichael, Lily Tong, Jenna Nichols, Eilhu Aranday-Cortes, Kirstyn Brunker, Yasmin Parr, Alice Broos, Kyriaki Nomioku, Sarah McDonald, Marc Nebel, Patawee Asamaphan, Richard Orton, Joseph Hughes, Sreenu Vattipally, David L. Robertson, Alastair MacLean, Rory Gunson, Kathy L. Natasha Jessudason, Rajiv Shah, James Shepherd, Antonia Ho, Emma Thomson
EPI_ISL_476152, EPI_ISL_476156, EPI_ISL_476157, EPI_ISL_476159, EPI_ISL_476161, EPI_ISL_476162, EPI_ISL_476163, EPI_ISL_476165, EPI_ISL_476167, EPI_ISL_476169	Laboratório de Patologia Clínica - UNICAMP	Laboratório de Patologia Clínica - UNICAMP	José Luiz Proença-Mendonça, Magnum Nuello Nunes dos Santos, Angelica Schreiber, Julia Forato, Camilla Simoni, Marcilio Jorge Fumagalli, Marlene Ribeiro Amorim, Darlan da Silva Cândido, Nuno Rodrigues Faria, Julien Theze, Luiz Gonzaga, Jaqueline Goes de Jesus e William Marchi de Souza
EPI_ISL_476244, EPI_ISL_476250	Hospital da Clínica da Faculdade de Medicina da Universidade de São Paulo	Instituto de Medicina Tropical da Universidade de São Paulo	Samples: Ingra Moraes Claro, Erica Regina Marull, Cecília Sante Alencar, Carolina S. Lázar, S. F. Costa; Sequencing: Ingra Moraes Claro, Jaqueline Goes de Jesus, Erica Regina Marull, Flávia Cristina da Silva Sales, Thaís de Moura Coletti, Camilla Alves Maia da Silva, Mariana Severo Ramundo, Giula Magalhães Ferreira, Darlan da Silva Cândido, Julien Theze, Nuno Faria, Ester Sabino
EPI_ISL_476263, EPI_ISL_476312, EPI_ISL_476322	DB Diagnósticos do Brasil	Instituto de Medicina Tropical da Universidade de São Paulo	Samples: Nelson Gaburo Jr; Sequencing: Ingra Moraes Claro, Jaqueline Goes de Jesus, Erica Regina Marull, Flávia Cristina da Silva Sales, Thaís de Moura Coletti, Camilla Alves Maia da Silva, Mariana Severo Ramundo, Giula Magalhães Ferreira, Darlan da Silva Cândido, Julien Theze, Nuno Faria, Ester Sabino
EPI_ISL_476337, EPI_ISL_476338	Laboratório de Patologia Clínica - UNICAMP	Laboratório de Estudos de Virus	José Luiz Proença-Mendonça, Magnum Nuello Nunes dos Santos, Angelica Schreiber, Julia Forato, Camilla Simoni, Marcilio Jorge Fumagalli, Marlene Ribeiro Amorim, Darlan da Silva Cândido, Nuno Rodrigues Faria, Julien Theze, Luiz Gonzaga, Jaqueline Goes de Jesus

### **Section 3. Supplementary figures**



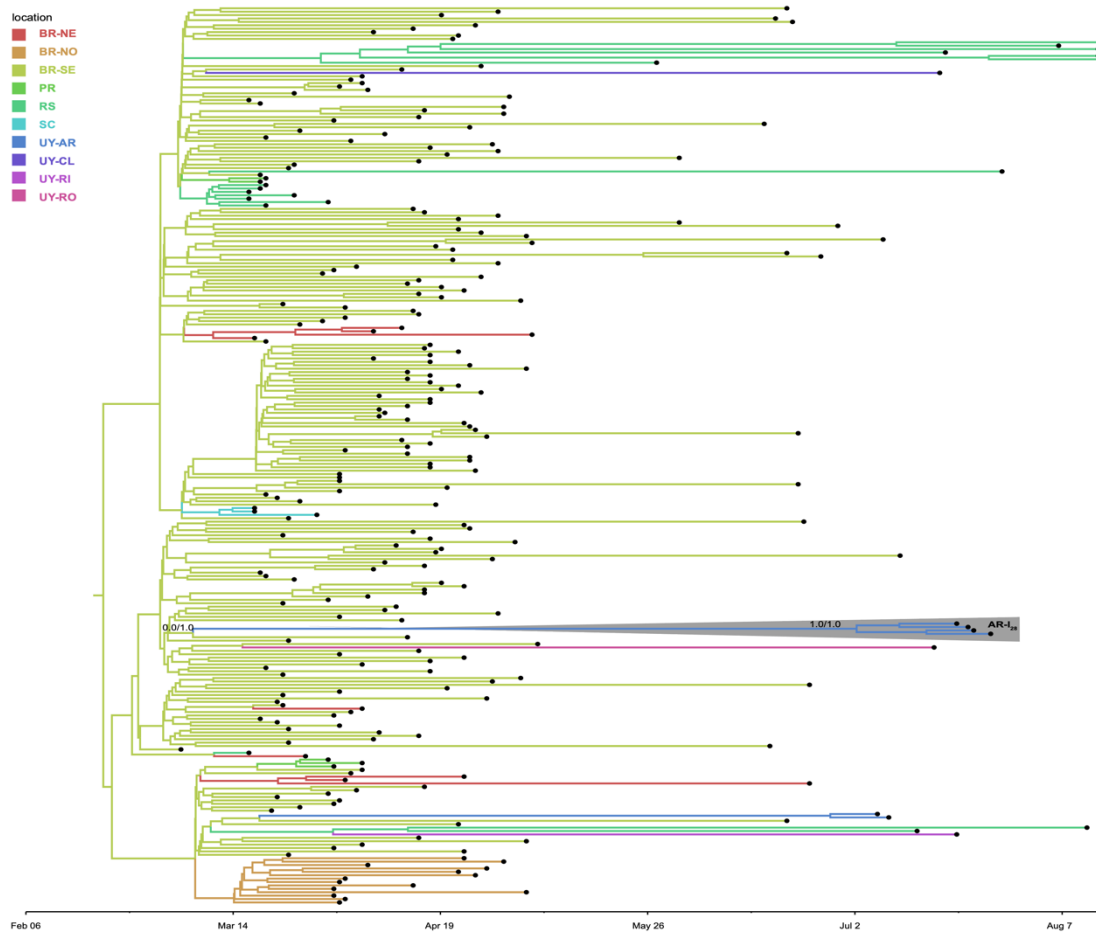
**Figure S1.** Effect of sequencing technology on intra-host diversity estimations. **A)** The samples were sequenced using three different technologies: Illumina, Ion Torrent, and ONT. In particular, samples M5, M8, M11, M12, M13, M14, and M15 were sequenced with both Ion Torrent and ONT technologies. The graphic depicts the Shannon Entropy values (H) obtained from allele frequencies obtained in each condition. As expected, due to the more error-prone ONT technology, H values are higher for data sequenced with ONT. **B)** After filtering those observations with less than 100 reads of genome coverage, the data consisted of 65, 63, and 264 points obtained by Illumina, Ion Torrent, and ONT sequencing, respectively. The boxplots show the distribution of H for each sequencing technology, H being higher for ONT. **C)** To better fit a normal distribution, H was square-root transformed ( $H \exp^{1/4}$ ). **D)** The histogram depicts the distribution of residuals from the linear model implemented ( $H \exp^{1/4} \sim \text{SEQ} + \text{SAMPLE} + \text{MUTATION}$ ).

- location
- BR-CO
  - BR-NE
  - BR-NO
  - BR-SE
  - PR
  - RS
  - SC
  - UY-MD
  - UY-RI
  - UY-TT





**Figure S2.** Spatiotemporal dissemination of SARS-CoV-2 B.1.1.33 Uruguayan-Brazilian variants. Time-scaled bayesian phylogeographic MCC tree. Branches are colored according to the most probable location state of their descendant nodes as indicated at the legend. Posterior probability/Posterior state probability support values are indicated at key nodes.



**Figure S3.** Spatiotemporal dissemination of SARS-CoV-2 B.1.1.28 Uruguayan-Brazilian variants. Time-scaled bayesian phylogeographic MCC tree. Branches are colored according to the most probable location state of their descendant nodes as indicated at the legend. Posterior probability/Posterior state probability support values are indicated at key nodes.

## References

- [1] 10.2807/1560-7917.ES.2020.25.3.2000045
- [2] [dx.doi.org/10.17504/protocols.io.bfy7jpnz](https://doi.org/10.17504/protocols.io.bfy7jpnz), BioRxiv
- [3] <https://dx.doi.org/10.17504/protocols.io.bdp7i5rn>
- [4] <https://doi.org/10.1038/nprot.2017.066>
- [5] <https://doi.org/10.1038/nprot.2017.066>
- [6] <https://www.biorxiv.org/content/10.1101/2020.10.06.328328v1>
- [7] <https://artic.network/ncov-2019/ncov2019-bioinformatics-sop.html>, accessed on December 2020.
- [8] <https://www.nature.com/articles/nbt.3820>
- [9] <https://github.com/iferres/ncov2019-artic-nf>
- [10] <https://doi.org/10.1038/nmeth.1923>
- [11] <https://doi.org/10.1093/nar/gkf436>
- [12] doi:10.1093/molbev/msx149
- [13] doi: 10.1093/ve/vew007
- [14] doi:10.1093/molbev/msi103
- [15] doi: 10.1093/ve/veaa061
- [16] <https://virological.org/t/time-dependence-of-sars-cov-2-substitution-rates/542>
- [17] doi:10.1093/sysbio/syy032
- [18] doi: 10.1002/j.1538-7305.1948.tb01338.x
- [19] R Core Team (2020). R: A language and environment for statistical computing. R Foundation for Statistical Computing, Vienna, Austria. URL <https://www.R-project.org/>