

1 **Model-based spatial-temporal mapping of opisthorchiasis in endemic**  
2 **countries of Southeast Asia**

3 Ting-Ting Zhao,<sup>1</sup> Yi-Jing Feng,<sup>1</sup> Pham Ngoc Doanh,<sup>2</sup> Somphou Sayasone,<sup>3</sup> Virak Khieu,<sup>4</sup> Choosak  
4 Nithikathkul,<sup>5</sup> Men-Bao Qian,<sup>6,7</sup> Yuan-Tao Hao<sup>1,8</sup> Ying-Si Lai,<sup>1,8\*</sup>

5 <sup>1</sup>Department of Medical Statistics, School of Public Health, Sun Yat-sen University, Guangzhou,  
6 Guangdong, People's Republic of China.

7 <sup>2</sup>Department of Parasitology, Institute of Ecology and Biological Resources, Graduate University of  
8 Science and Technology, Vietnam Academy of Sciences and Technology, Cau Giay, Hanoi, Vietnam.

9 <sup>3</sup>Lao Tropical and Public Health Institute, Ministry of Health, Vientiane Capital, Lao People's Democratic  
10 Republic.

11 <sup>4</sup>National Center for Parasitology, Entomology and Malaria Control, Ministry of Health, Phnom Penh,  
12 Cambodia.

13 <sup>5</sup>Tropical and Parasitic Diseases Research Unit, Faculty of Medicine, Mahasarakham University,  
14 Mahasarakham, Thailand.

15 <sup>6</sup>National Institute of Parasitic Diseases, Chinese Center for Disease Control and Prevention, Shanghai,  
16 People's Republic of China.

17 <sup>7</sup>WHO Collaborating Centre for Tropical Diseases, Key Laboratory of Parasite and Vector Biology,  
18 Ministry of Health, Shanghai, People's Republic of China.

19 <sup>8</sup>Sun Yat-sen Global Health Institute, Sun Yat-sen University, Guangzhou, Guangdong, People's Republic  
20 of China.

21 \*Correspondence to: Dr Ying-Si Lai, Department of Medical Statistics, School of Public Health, Sun Yat-  
22 sen University, Guangzhou, Guangdong 510080, China. laiys3@mail.sysu.edu.cn

**NOTE: This preprint reports new research that has not been certified by peer review and should not be used to guide clinical practice.**

## 23 **Abstract**

24 Opisthorchiasis is an overlooked danger to Southeast Asia. High-resolution disease risk maps are critical  
25 but haven't been available for Southeast Asia. Georeferenced disease data and potential influencing  
26 factor data were collected through a systematic review of literatures and open-access databases,  
27 respectively. Bayesian spatial-temporal joint models were developed to analyze both point- and area-  
28 level disease data, within a logit regression in combination of potential influencing factors and spatial-  
29 temporal random effects. The model-based risk mapping identified areas of low, moderate and high  
30 prevalence across the study region. Even though the overall population-adjusted estimated prevalence  
31 presented a trend down, a total of 12.39 million (95% BCI: 10.10-15.06) people were estimated infected  
32 with *O. viverrini* in 2018 in four major endemic countries (i.e., Thailand, Laos, Cambodia, and Vietnam),  
33 highlighting the public health importance of the disease in the study region. The high-resolution risk  
34 maps provide valuable information for spatial targeting of opisthorchiasis control interventions.

35

## 36 **Introduction**

37 End the epidemics of Neglected Tropical Diseases (NTDs) by 2030 embodied in the international set of  
38 targets for the Sustainable Development Goals (SDGs) endorsed by the United Nations empowers the  
39 efforts made by developing countries to combat the NTD epidemics (*UN, 2015*). To date, 20 diseases  
40 have been listed as NTDs, and opisthorchiasis is under the umbrella of food-borne trematodiasis  
41 (*Ogorodova et al., 2015*). Two species of opisthorchiasis are of public health significance, that is  
42 *Opisthorchis felineus* (*O. felineus*), endemic in eastern Europe and Russia, and *Opithorchis viverrini* (*O.*  
43 *viverrini*) endemic in Southeast Asian countries (*Petney et al., 2013*). The later species is of our interest  
44 in the current manuscript.

45 According to WHO's conservative estimation, an overall disease burden due to opisthorchiasis was  
46 188,346 disability-adjusting life years (DALYs) in 2010 (*Havelaar et al., 2015*). Fürst and colleagues  
47 estimated that more than 99% of the burden worldwide attribute to *O. viverrini* infection in Southeast  
48 Asia (*Fürst et al., 2012*). Five countries in Southeast Asia, Cambodia, Lao PDR, Myanmar, Thailand and  
49 Vietnam, are endemic for opisthorchiasis, with an estimated 67.3 million people at risk (*Keiser &*  
50 *Utzing, 2005*). It is well documented that chronic and repeated infection with *O. viverrini* leads to the  
51 development of fatal bile duct cancer (cholangiocarcinoma) (*International Agency for Research on*  
52 *Cancer, 1994*).

53 The life cycle of *O. viverrini* involves freshwater snails of the genus *Bithynia* as the first intermediate  
54 host, and freshwater cyprinoid fish as the second intermediate host. Humans and other carnivores (e.g.,  
55 cats and dogs), the final hosts, become infected by consuming raw or insufficiently cooked infected fish  
56 (*Andrews et al., 2008, Saijuntha et al., 2014*). Behavioral, environmental and socio-economic factors  
57 affect the transmission of *O. viverrini* (*Grundy-Warr et al., 2012, Phimpraphai et al., 2017,*  
58 *Phimpraphai et al., 2018, Prueksapanich et al., 2018*). Raw or insufficiently cooked fish consumption  
59 is the cultural root in endemic countries, shows a strong relationship with the occurrence of the disease  
60 (*Andrews et al., 2008, Grundy-Warr et al., 2012*). Poorly hygienic conditions increase the risk of  
61 infection, especially in areas practicing raw-fish-eating habit (*Grundy-Warr et al., 2012*). In addition,  
62 environmental and climatic factors, such as temperature, precipitation and landscape, affecting either  
63 snail/fish population or growth of the parasites inside the intermediate hosts, can potentially influence  
64 the risk of human infection (*Forrer et al., 2012, Suwannatrai et al., 2017*). Important control strategies  
65 of *O. viverrini* infection include preventive chemotherapy, health education, environmental modification,  
66 improving sanitation, as well as comprehensive approaches with combinations of the above (*Saijuntha*

67 *et al., 2014*). For purposes of public health control, WHO recommends implementing preventive  
68 chemotherapy once a year or once every two years depending on the levels of prevalence in population,  
69 with complementary interventions such as health education and improvement of sanitation (*WHO, 2009*).  
70 Understanding the geographical distribution of *O. viverrini* infection risk at high spatial resolution is  
71 critical to prevent and control the disease cost-effectively in priority areas. Thailand conducted national  
72 surveys for *O. viverrini* prevalence in 1981, 1991, 2001, 2009, and 2014 (*Echaubard et al., 2016*,  
73 *Suwannatrai et al., 2018*), but the results of these surveys were presented at the province-level, which is  
74 less informative for precisely targeting control interventions. Suwannatrai and colleagues, based on  
75 climatic and *O. viverrini* presence data, produced climatic suitability maps for *O. viverrini* in Thailand  
76 using the MaxEnt modeling approach (*Suwannatrai et al., 2017*). The maps brought insights for  
77 identifying areas with a high probability of *O. viverrini* occurrence; however, they did not provide direct  
78 information on prevalence of *O. viverrini* in population (*Elith et al., 2011*). A risk map of *O. viverrini*  
79 infection in Champasack province of Lao PDR were presented by Forrer and colleagues (*Forrer et al.,*  
80 *2012*). To our knowledge, high-resolution, model-based risk estimates of *O. viverrini* infection are  
81 unavailable in the whole endemic region of Southeast Asia.

82 Bayesian geostatistical modeling is one of the most rigorous inferential approaches for high-resolution  
83 maps depicting the distribution of the disease risk (*Karagiannis-Voules et al., 2015*). Geostatistical  
84 modeling relates geo-referenced disease data with potential influencing factors (e.g., socioeconomic and  
85 environmental factors) and estimates the infection risk in areas without observed data (*Gelfand &*  
86 *Banerjee, 2017*). Common geostatistical models are usually based on point-referenced survey data  
87 (*Banerjee et al., 2014*). In practice, disease data collected from various sources often consists of point-  
88 referenced and area-aggregated data. Bayesian geostatistical joint modeling approaches provide a

89 flexible framework for combining analysis of both kinds of data (*Moraga et al., 2017, Smith et al., 2008*).

90 In this study, we aimed (1) to collect all available survey data on the prevalence of *O. viverrini* infection  
91 at point- or area-level in Southeast Asia through systematic review; and (2) to estimate the spatial-  
92 temporal distribution of the disease risk at a high spatial resolution, with the application of advanced  
93 Bayesian geostatistical joint modeling approach.

94

## 95 **Results**

96 A total of 2,690 references were identified through systematically reviewing peer-review literatures, and  
97 13 additional references were gathered from other sources. According to the inclusion and exclusion  
98 criteria, 168 records were included, resulted in a total of 580 ADM1-level surveys in 174 areas, 210  
99 ADM2-level surveys in 142 areas, 53 ADM3-level surveys in 51 areas, and 251 point-level surveys at  
100 207 locations in five endemic countries (i.e., Cambodia, Lao PDR, Myanmar, Thailand and Vietnam) of  
101 Southeast Asia (Figure 1). Around 70% and 15% of surveys were conducted in Thailand and Lao PDR,  
102 respectively. Only two relevant records were obtained from Myanmar. To avoid large estimated errors,  
103 we did not include this data in the final geostatistical analysis. All surveys were conducted after 1970,  
104 with around 75% done after 1998. Most surveys (95%) are community-based. Around 40% of surveys  
105 used the Kato-Katz technique for diagnosis, while another 42% did not specify diagnostic approaches.  
106 Mean prevalence calculated directly from survey data was 16.74% across the study region. A summary  
107 of survey data is listed in Table 1, and survey locations and observed prevalence in each period are shown  
108 in Figure 2. Area-level data cover all regions in Thailand and Lao PDR, and most regions in Cambodia  
109 and Vietnam, whilst point-referenced data are absent in most areas of Vietnam, the western part of  
110 Cambodia and southern part of Thailand. Around 70% of eligible literatures got a score equal or more

111 than 7, indicating an overall good quality of eligible literatures in our study (Figure 2-figure supplement  
112 1).

113 Seven variables were selected for the final model through the Bayesian variable selection process  
114 (Table 2). The infection risk was 2.61 (95%BCI: 2.10-3.42) times in the community as much as that in  
115 school-aged children. Surveys using FECT as the diagnostic method showed a lower prevalence (*OR*  
116 0.76, 95%BCI: 0.61-0.93) compared to that using Kato-Katz method, while no significant difference was  
117 found between Kato-Katz and the other diagnostic methods. Human influence index and elevation were  
118 negatively correlated with the infection risk. Each unit increase of the HII index was associated with 0.01  
119 (95%BCI: 0.003-0.02) decrease in the logit of the prevalence. And increase 1 meter in elevation was  
120 associated with the 0.003 (95%BCI: 0.001-0.005) decrease in the logit of the prevalence. The spatial  
121 range was estimated 83.55 km (95% BCI: 81.34-86.61), the spatial variance  $\sigma_{\phi}^2$  was 12.59 (95% BCI:  
122 11.96-13.56), the variance of beta-likelihood  $\sigma_{\beta}^2$  was 0.15 (95% BCI: 0.14-0.15), and the temporal  
123 correlation coefficient  $\rho$  was 0.66 (95% BCI: 0.65-0.67). Model validation showed that our model was  
124 able to correctly estimate 79.61% of locations within the 95% BCI, indicating the model had a reasonable  
125 capacity of prediction accuracy. The ME, MAE, and MSE were 0.24%, 9.06%, and 2.38%, respectively,  
126 in the final model, while they were -7.14%, 16.67%, and 5.09%, respectively, in the model only based  
127 on point-referenced data, suggesting that the performance of the final model was better than the model  
128 only based on point-referenced data. On the other hand, Monte Carlo test for preferential sampling  
129 suggested that preferential sampling may exist for survey locations in one third (6/18) of the survey years  
130 (Figure 2-source data 2).

131 The estimated risk maps of *O. viverrini* infection in different selected years (i.e., 1978, 1983, 1988, 1993,  
132 1998, 2003, 2008, 2013, and 2018) are presented in Figure 3. In 2018, the high infection risk (with

133 prevalence >25%) was mainly estimated in regions of the southern, the central and the north-central parts  
134 of Lao PDR, some areas in the east-central parts of Cambodia, and some areas of the northeastern and  
135 the northern parts Thailand. The southern part of Thailand, the northern part of Lao PDR, and the western  
136 part of Cambodia showed low risk estimates (with prevalence <5%) of *O. viverrini* infection. The central  
137 and several southern parts of Vietnam showed low to moderate risk of *O. viverrini* infection, while there  
138 was no evidence of *O. viverrini* in other parts of Vietnam. High estimation uncertainty was mainly present  
139 in the central part of Lao PDR, the northern and the eastern parts of Thailand, and the central part of  
140 Cambodia and Vietnam (Figure 4).

141 In addition, the infection risk varies over time across the study region (Figure 5). Areas of northern  
142 Thailand showed an increasing trend in periods 1978-1988 and 1993-2003, while most areas of the  
143 country presented a considerable decrease of infection risk after 2008. The infection risk firstly increased  
144 and then decreased in areas of the north, the central and the southern parts of Lao PDR and the central  
145 parts of Vietnam. The east-central and western part of Cambodia showed an increasing trend in recent  
146 years.

147 The population-adjusted estimated prevalence over the study region presents a trend down after 1995  
148 (Figure 6 and Figure 6-figure supplement 1-9). At the country-level, the estimated prevalence in Thailand  
149 showed a fast decline after 1995, and took on a gradually decreasing change in Cambodia. In Lao PDR,  
150 the overall prevalence maintained quite stable before 1990, and decreased slightly between 1990 to 1997,  
151 increased significantly after 1997, then decreased from 2006, and became stable after 2011. The  
152 prevalence stable in Vietnam during the whole study period. We estimated that in 2018, the overall  
153 population-adjusted estimated prevalence of *O. viverrini* infection in the whole study region was 6.57%  
154 (95% BCI: 5.35%-7.99%), corresponding to 12.39 million (95% BCI: 10.10-15.06) infected individuals

155 (Table 3). Lao PDR showed the highest prevalence (35.21%, 95% BCI: 28.50%-40.70%), followed by  
156 Thailand (9.71%, 95% BCI: 7.98%-12.17%), Cambodia (6.15%, 95% BCI: 2.41%-11.73%), and Vietnam  
157 (2.15%, 95% BCI: 0.73%-4.40%). Thailand had the largest numbers of individuals estimated to be  
158 infected with *O. viverrini* (6.71million, 95% BCI: 5.51-8.41), followed by Lao PDR (2.45million, 95%  
159 BCI: 1.98-2.83), Vietnam (2.07million, 95% BCI: 0.70-4.24), and Cambodia (1.00million, 95% BCI:  
160 0.39-1.90).

161

## 162 **Discussion**

163 In this study, we produced model-based, high-resolution risk estimates of opisthorchiasis across endemic  
164 countries of Southeast Asia through systematic reviewing and the advanced Bayesian geostatistical joint  
165 modeling approach. The disease is the most important foodborne trematodiasis in the study region (*Sripa*  
166 *et al., 2010*), taking into account most of the disease burden of opisthorchiasis in the world (*Fürst et al.,*  
167 *2012*). The estimates were obtained by systematically reviewing all possible geo-referenced survey data  
168 and applying a Bayesian geostatistical modeling approach that jointly analyzes point-referenced and  
169 area-aggregated disease data, as well as environmental and socioeconomic predictors. Our findings will  
170 be important for guiding control and intervention cost-effectively and serve as a baseline for future  
171 progress assessment.

172 Our estimates suggested that there was an overall decrease of *O. viverrini* infection in Southeast Asia  
173 from 1995 onwards, which may be largely attributed to the decline of infection prevalence in Thailand.  
174 This decline was probably on account of the national opisthorchiasis control program launched by the  
175 Ministry of Public Health of Thailand from 1987 (*Jongsuksuntigul & Imsomboon, 2003,*  
176 *Jongsuksuntigul et al., 2003*). Our high-resolution risk estimates in Thailand in 2018 showed similar



177 pattern as the climatic suitability map provided by Suwannatrai and colleagues (*Suwannatrai et al.*,  
178 *2017*). In this case, we estimated the prevalence of the population instead of the occurrence probability  
179 of the parasite, which arms decision makers with more direct epidemiological information for guiding  
180 control and intervention. The national surveys in Thailand reported a prevalence of 8.7% and 5.2% in  
181 2009 and 2014, respectively (*MOPH, 2014, Wongsaroj et al., 2014*). However, we estimated higher  
182 prevalence of 12.44% (95% BCI: 10.79%-14.26%) and 9.34% (95% BCI: 7.88%-11.02%) in 2009 and  
183 2014, respectively. Even though the national surveys covered most provinces in Thailand, estimates were  
184 based on simply calculating the percentage of positive cases among all the participants (*Wongsaroj et al.*,  
185 *2014*), and the remote areas might not be included (*Maipanich et al., 2004*). Instead, our estimates were  
186 based on rigorous Bayesian geostatistical modeling of available survey data with environmental and  
187 socioeconomic predictors, accounting for heterogeneous distribution of infection risk and population  
188 density when aggregating country-level prevalence.

189 Our findings suggested that the overall prevalence of *O. viverrini* remained high (>20%) in Lao PDR  
190 during the study periods, consistent with conclusions drawn by Suwannatrai and colleagues  
191 (*Suwannatrai et al., 2018*). We estimated that a total number of 2.45 (95% BCI: 1.98-2.83) million  
192 people living in Lao PDR was infected with *O. viverrini*, equivalent to that estimated by WHO in 2004  
193 (*WHO, 2002*). Besides, our risk mapping for Champasack province shares similarly risk map pattern  
194 produced by Forrer and colleagues (*Forrer et al., 2012*). A national-scaled survey in Cambodia during  
195 the period 2006-2011 reported infection rate of 5.7% (*Yong et al., 2014*), lower than our estimation of  
196 8.34% (95% BCI: 5.25%-14.95%) in 2011. The former may underestimate the prevalence because more  
197 than 77% of participants were schoolchildren (*Yong et al., 2014*). Another large survey in five provinces  
198 of Cambodia suggested a large intra-district variation, which makes the identification of endemic areas

199 difficult (*Miyamoto et al., 2014*). Our high-resolution estimates for Cambodia help to differentiate the  
200 intra-district risk. However, the estimates should be taken cautious due to large district-wide variances  
201 and a relatively small number of surveys. Indeed, *O. viverrini* infection was underreported in Cambodia  
202 (*Khieu et al., 2019*), and further point-referenced survey data are recommended for more confirmative  
203 results.

204 Although an overall low prevalence was estimated in Vietnam (2.15%, 95% BCI: 0.73%-4.40%) in 2018,  
205 it corresponds to 2.07 million (95% BCI: 0.70 million-4.24 million) people infected, comparable to the  
206 number in Lao PDR, mainly due to a larger population in Vietnam. The risk mapping suggested moderate  
207 to high risk areas presented in central Vietnam, with a high risk in Phu Yen province for many years,  
208 particularly. This agreed with previous studies considering the province a “hotspot” (*Doanh & Nawa,*  
209 *2016*). Of note, even though there was no evidence of *O. viverrini* infection in the northern part of the  
210 country, *Clonorchis sinensis*, another important liver fluke species, is endemic in the region  
211 (*Sithithaworn et al., 2012*). We didn't provide estimates for Myanmar in case of large estimated errors.  
212 Indeed, only two relevant papers were identified by our systematic review, where one shows low to  
213 moderate prevalence in three regions of Lower Myanmar (*Aung et al., 2017*), and the other found low  
214 endemic of *O. viverrini* infection in three districts of the capital city Yangon (*Sohn et al., 2019*). Nation-  
215 wide epidemiological studies are urgent for a more comprehensive understanding of the disease in  
216 Myanmar.

217 We identified several important factors associated with *O. viverrini* infection in Southeast Asia, which  
218 may provide insights for the prevention and control of the disease. The infection risk was higher in the  
219 entire community than that in schoolchildren, consistent with multiple studies (*Aung et al., 2017, Forrer*  
220 *et al., 2012, Miyamoto et al., 2014, Van De, 2004, Wongsaroj et al., 2014*). A negative association was

221 found between *O. viverrini* infection and elevation, suggesting the disease was more likely to occur in  
222 low altitude areas, which was consistent with a previous study (*Wang et al., 2013*). HII, a measure of  
223 human direct influence on ecosystems (*Sanderson et al., 2002*), showed a negative relationship with  
224 *O. viverrini* infection risk, indicating the disease was more likely to occur in areas with low levels of  
225 human activities, which were often remote and economically underdeveloped. The habit of eating raw or  
226 insufficiently cooked fish was more common in rural areas than that in economically developed ones,  
227 which could partially explain our findings (*Grundy-Warr et al., 2012, Jennifer, 2019*). Indeed, this  
228 culturally rooted habit is one of the determinants for human opisthorchiasis (*Kaewpitoon et al., 2008,*  
229 *Ziegler et al., 2011*). However, the precise geographical distribution of such information is unavailable  
230 and thus we could not use it as a covariate in this study.

231 Our estimate of the number of people infected with *O. viverrini* is higher than that of the previous study  
232 (12.39 million vs 8.6 million (*Qian & Zhou, 2019*)) emphasizing the public health importance of this  
233 neglected disease in Southeast Asia, and suggesting that more effective control interventions should be  
234 conducted, particularly in the high risk areas. The successful experience in the intervention of Thailand  
235 may be useful for reference by other endemic countries of the region. The national opisthorchiasis control  
236 program, supported by the government of Thailand, applied interrelated approaches, including stool  
237 examination and treatment of positive cases, health education aiming at the promotion of cooked fish  
238 consumption, and environmental sanitation to improve hygienic defecation (*Jongsuksuntigul &*  
239 *Imsomboon, 2003*). In addition, for areas with difficulties to reduce infection risk, a new strategy was  
240 developed by Sripa and colleagues, using the EcoHealth approach with anthelmintic treatment, novel  
241 intensive health education on both communities and schools, ecosystem monitoring, and active  
242 participation of the community (*Sripa et al., 2015*). This “Lawa model” shows good effectiveness in

243 Lawa Lake area, where the liver fluke was highly endemic (*Sripa et al., 2015*). Furthermore, common  
244 integrated control interventions (eg, combination of preventive chemotherapy with praziquantel,  
245 improvement of sanitation and water sources, and health education) are applicable not only for  
246 opisthorchiasis but also for other NTDs, such as soil-transmitted helminth infection and schistosomiasis,  
247 which are also prevalent in the study region (*Dunn et al., 2016, Gordon et al., 2019*). Implementation of  
248 such interventions in co-endemic areas could be cost-effective (*Baker et al., 2011, WHO, 2012*).

249 Frankly, several limitations exist in our study. We collected data from different sources, locations of  
250 which might not be random and preferential sampling may exist. We performed a risk-preferential  
251 sampling test and the results showed that preferential sampling might exist for survey locations in one  
252 third (6/18) of the survey years (Figure 2-source data 2). The corresponding impacts might include  
253 improper variogram estimator, biased parameter estimation and unreliable exposure surface estimates  
254 (*Diggle et al., 2010, Pati et al., 2011, Gelfand et al., 2012*). Nevertheless, a previous study showed that  
255 the INLA method, which we adopted for model fitting, performed well in parameter estimation for both  
256 preferentially and non-preferentially sampled simulated data sets. And in particular, it resulted in better  
257 estimation than that from other methods, such as the Monte Carlo method and the standard MLE  
258 estimation, when fitting the data with preferential sampling (*Dinsdale & Salibian-Barrera, 2019*). To  
259 avoid a more complex model, we didn't take into account the preferential sampling issue for our final  
260 model, as the model validation showed a reasonable capacity of prediction accuracy. However, the  
261 disadvantage of this issue should be well aware.

262 We set clear criteria for selection of all possible qualified surveys and didn't exclude surveys that reported  
263 prevalence in intervals without exact observed values. Sensitivity analysis showed that the using the  
264 midpoint values of the intervals had little effects on the final results (Figure 3-figure supplement 1). For

265 surveys across a large area, complex designs, such as randomly sampling from subgroups of the  
266 population under a well-designed scheme, are likely adopted, as it is impractical to draw simple random  
267 samples from the whole area. In such case, respondents may have unequal probabilities to be selected,  
268 thus weighting should be used to generalize results for the entire area. The observed disease data we  
269 collected were from surveys either at point-level (i.e., community or school) or aggregated over areas.  
270 For point-level data, as study areas were quite small, simple sampling design were mostly used in the  
271 corresponding surveys. And for areal-level data, particularly those aggregated across ADM1, complex  
272 designs were likely applied. However, most of the corresponding surveys were only reported raw  
273 prevalence or prevalence without clarifying whether weighting was applied. Thus, we did not have  
274 enough information to address the design effect for each single survey included. On the other hand, as  
275 population density across the study region were different, we calculated the estimated country- and  
276 provincial level prevalence by averaging the estimated pixel-level prevalence weighted by population  
277 density. In this way, we took into account the diversity of population density across areas for regional  
278 summaries of the estimates.

279 We assumed similar proportions of age and gender in different surveys, as most of which only reported  
280 prevalence aggregated by age and gender. Nevertheless, considering the possible differences in infection  
281 risk between the whole population and schoolchildren, we categorized survey types to the community-  
282 and school-based. Furthermore, our analysis was based on survey data under different diagnostic methods.  
283 The sensitivity and specificity of the same diagnostic method may differ across studies (*Charoensuk et*  
284 *al., 2019, Laoprom et al., 2016, Sayasone et al., 2015*), while different diagnostic methods may result in  
285 different results in the same survey. To partially taking into account the diversity of diagnostic methods,  
286 we assumed the same diagnostic method has similar sensitivity and specificity, and we considered the

287 types of diagnostic methods as covariates in the model. Results showed that the odds of infection with  
288 FECT methods was significantly lower than that with Kato-Katz, which was consistent with results found  
289 by Lovis and colleagues (*Lovis et al., 2009*). In addition, most of the diagnostic methods in the surveys  
290 were based on fecal microscopic technique on eggs, which could not effectively distinguish between  
291 *O. viverrini* and minute intestinal flukes of the family Heterophyidae (eg heterophyid and lecithodendriid)  
292 (*Charoensuk et al., 2019, Sato et al., 2010*). Thus, our results may overestimate the *O. viverrini* infection  
293 risk in areas where heterophyid and lecithodendriid are endemic, such as Phongsaly, Saravane and  
294 Champasak provinces in Lao PDR (*Sato et al., 2010, Chai et al., 2010, Chai et al., 2013*), Nan and  
295 Lampang provinces in Thailand (*Wijit et al., 2013*), and Takeo province in Cambodia (*Sohn et al., 2011*).  
296 There is an urgent need for the application of more powerful diagnostic practices with higher sensitivity  
297 and specificity to better detect the true *O. viverrini* prevalence, such as PCR (*Lovis et al., 2009, Lu et al.,*  
298 *2017, Sato et al., 2010*). Nevertheless, because of the similar treatment and the prevention strategies of  
299 *O. viverrini* and minute intestinal flukes (*Keiser & Utzinger, 2010*), our risk mapping is valuable also for  
300 areas co-endemic with the above flukes.

301 In conclusion, this study contributes to better understand the spatial-temporal characteristics of  
302 *O. viverrini* infection in major endemic countries of Southeast Asia, providing valuable information  
303 guiding control and intervention, and serving as a baseline for future progress assessment. Estimates were  
304 based on a rigorous geostatistical framework jointly analyzing point- and areal level survey data with  
305 potential predictors. The higher number of infected people we estimated highlights the public health  
306 importance of this neglected disease in the study region. More comprehensive epidemiological studies  
307 are urgently needed for endemic areas with scant survey data.

308

309 **Materials and Methods**

<b>Key Resources Table</b>				
<b>Reagent type (species) or resource</b>	<b>Designation</b>	<b>Source or reference</b>	<b>Identifiers</b>	<b>Additional information</b>
Software, algorithm	R Project for Statistical Computing	R Project for Statistical Computing	RRID:SCR_001905	
Software, algorithm	ArcGIS for Desktop Basic	ArcGIS for Desktop Basic	RRID:SCR_011081	
Software, algorithm	R-INLA Project	R-INLA Project		<a href="https://www.r-inla.org/">https://www.r-inla.org/</a>
Software, algorithm	“PStestR” R Package	“PStestR” R Package		<a href="https://github.com/joenomiddlename/PStestR">https://github.com/joenomiddlename/PStestR</a>

310 **Search strategy, selection criteria and data extraction**

311 We collected relevant publications reporting prevalence data of opisthorchiasis in Southeast Asia through  
312 a systematic review (registered in the International Prospective Register of Systematic Reviews,  
313 PROSPERO, No.CRD42019136281), and reported our systematic review according to the PRISMA  
314 guidelines (Supplementary File 1A) (*Moher et al., 2009*). We searched PubMed and ISI Web of Science  
315 from inception to February 9, 2020, with search terms: (liver fluke\* OR Opisthorchi\*) AND (Southeast  
316 Asia OR Indonesia OR (Myanmar OR Burma) OR Thailand OR Vietnam OR Malaysia OR Philippines  
317 OR Lao PDR OR Cambodia OR Timor OR Brunei OR Singapore). We set no limitations on language,  
318 date of survey, or study design in our search strategy. For literatures not found by the above methods, we  
319 also reviewed reports from governments or Ministry of Health, theses, relevant books and documents.

320 We followed a protocol (Figure 1-figure supplement 1) for inclusion, exclusion and extraction of survey  
321 data. Firstly, we screened titles and abstracts to identify potentially relevant articles. Publications on in  
322 vitro studies, or absence of human studies or absence of disease studies were excluded. Quality control  
323 was undertaken by re-checking 20% of randomly selected irrelevant papers. Second, the full-text review

324 was applied to potentially relevant articles. We excluded publications with following conditions: absence  
325 of prevalence data; studies done in specific patient groups (eg, prevalence on patients with specific  
326 diseases), in specific population groups (eg, travelers, military personnel, expatriates, nomads, displaced  
327 or migrating population), under specific study designs (eg, case report studies, case-control studies,  
328 clinical trials, autopsy studies); drug efficacy or intervention studies (except for baseline data or control  
329 groups), population deworming within one year, the survey time interval more than ten years, data only  
330 based on the direct smear method (due to low sensitivity) or serum diagnostics (due to unable to differ  
331 the past and the active infection). During the full-text review, the potential relevant cited references of  
332 the articles were also screened. Studies were included if they reported survey data at provincial level and  
333 below, such as administrative divisions of level one (ADM1: province, state, etc.), two (ADM2: city,  
334 etc.), and three (ADM3: county, etc.), and at point-level (village, town, school, etc.). Duplicates were  
335 checked and removed. The quality assessment of each individual record included in the final  
336 geostatistical analysis was performed by two independent reviewers, based on a nine-point quality  
337 evaluation checklist (Figure 2-figure supplement 1-source data 1).

338 We followed the GATHER checklist (Supplementary File 1B) (*Stevens et al., 2016*) for the data  
339 extraction. Detailed information of records was extracted into a database, which includes literature  
340 information (eg, journal, authors, publication date, title, volume, and issue), survey information (eg,  
341 survey type: community- or school-based, year of survey), location information (eg, location name,  
342 location type, coordinates), and disease related data (eg, species of parasites, diagnostic method,  
343 population age, number of examined, number of positive, and percentage of positive). The coordinates  
344 of the survey locations were obtained from Google Maps (<https://www.google.com/maps/>). For surveys



345 reported prevalence in intervals without exact observed values, the midpoints of the intervals were  
346 assigned.

### 347 **Environmental, socioeconomic, and demographic data**

348 The environmental data (i.e., annual precipitation, distance to the nearest open water bodies, elevation,  
349 land cover, land surface temperature in the daytime and at night and normalized difference vegetation  
350 index), socioeconomic data (i.e., human influence index, survey type, and travel time to the nearest big  
351 city), and demographic data of Southeast Asia were downloaded from open data sources (Figure 7-source  
352 data 1). Land cover data was summarized by the most frequent category within each pixel over the period  
353 of 2001-2018. We combined similar land cover classes and re-grouped them into five categories: (i)  
354 Croplands; (ii) Forests; (iii) Shrub and grass; (iv) Urban; (vi) Others. Land surface temperature (LST) in  
355 the daytime and at night, as well as normalized difference vegetation index (NDVI) were averaged over  
356 the period of 2000-2018. All data were aligned over a 5×5 km grid across the study region (Figure 7).  
357 Data at point-referenced survey locations were extracted. We linked the data to the divisions (i.e., ADM1,  
358 ADM2 or ADM3) reported aggregated outcome of interest (i.e., infection prevalence) by averaging them  
359 within the corresponding divisions. The above data processing was done using the package “raster”  
360 (<https://cran.r-project.org/web/packages/raster>) through R (version 3.5.0).

### 361 **Model fitting and variable selection**

362 As our outcome of interest derived from both point-referenced and area-aggregated surveys, a bivariate  
363 Bayesian geostatistical joint modeling approach was applied to analyze the area-level and point-level  
364 survey data together (*Moraga et al., 2017, Utazi et al., 2019*), and account for both disease data reporting  
365 numbers of examined and positive, and those reporting only prevalence.

366 We defined  $p_{it}$  the probability of infection at location  $i$  and time period  $t$ , where  $i$  is the index either  
367 for the location of point-referenced data or of the area for area-level data. Based on the probability theory,  
368 for data reported with numbers of examined and positive, we assumed that the number of examined  $Y_{it}$   
369 followed a binomial distribution  $Y_{it} \sim \text{Bin}(p_{it}, N_{it})$ , where  $N_{it}$  denoted the number of examined; and  
370 for data only reported with the observed prevalence, we assumed that the observed prevalence  $ob_{it}$   
371 followed a beta distribution  $ob_{it} \sim \text{Be}(p_{it}, \sigma_p^2)$ . The period of this study were from 1978 to 2018. We  
372 modelled predictors on a logit scale of  $p_{it}$ .

373 We referred to the method proposed by Cameletti and colleagues (*Krainski, 2019, Cameletti et al., 2013*)  
374 to build a spatial-temporal model combined with covariates, which was defined as a SPDE model for the  
375 spatial domain and an AR1 model for the time dimension. A standard grid of  $5 \times 5$  km<sup>2</sup> was overlaid to  
376 each survey area resulting in a certain number of pixels representing the area. We assumed that survey  
377 locations and pixels within survey areas shared the same spatial-temporal process. In addition, we  
378 assumed the infection risk the same within 1-year period for the same areas. Different observations from  
379 the same year in the same areas can be treated as realizations of the randomized spatial-temporal process.

380 Let  $i = 1, \dots, n_A, n_A + 1, \dots, n_A + n_p$ , here  $n_A$  was the total number of areas for area-level surveys and  
381  $n_p$  the total number of locations for point-referenced surveys. Regarding to area-level data,  $\text{logit}(p_{it}) =$   
382  $\beta_0 + \tilde{\mathbf{x}}_i' \boldsymbol{\beta} + |A_i|^{-1} \int_{A_i} \omega(s, t) ds dt$ , where  $i = 1, \dots, n_A$ ,  $\tilde{\mathbf{x}}_i$  the vectors of covariate values for  $i^{\text{th}}$  area  
383 in time period  $t$  with  $\tilde{\mathbf{x}}_{it} = |A_i|^{-1} \int_{A_i} \mathbf{x}(s, t) ds dt$  and  $\beta_0$  and  $\boldsymbol{\beta}$  are the intercept and the  
384 corresponding regression coefficients.  $|A_i| = \int_{A_i} 1 ds$  was the size of the  $i^{\text{th}}$  area and  $\omega(s, t)$  the  
385 spatial-temporal random effects of pixels within the area. For point-referenced data,  $\text{logit}(p_{it}) = \beta_0 +$   
386  $\mathbf{x}'_{it} \boldsymbol{\beta} + \omega(s_i, t)$ , where  $i = n_A + 1, \dots, n_A + n_p$ ,  $\mathbf{x}'_{it}$  the vectors of covariate values and  $\omega(s_i, t)$  the  
387 spatial-temporal random effect for  $i^{\text{th}}$  location in time period  $t$ . To decrease the computational burden,

388 under the SPDE framework, we built the GMRF on regular temporal knots, that is  $\omega =$   
389  $(\omega_{t=1978}, \omega_{t=1983}, \omega_{t=1988}, \omega_{t=1993}, \omega_{t=1998}, \omega_{t=2003}, \omega_{t=2008}, \omega_{t=2013}, \omega_{t=2018})'$  (Cameletti et al.,  
390 2013, Krainski, 2019). We assumed the spatio-temporal random effect  $\omega(s, t)$  follow a zero-mean  
391 Gaussian distribution, that is  $\omega \sim GP(0, \mathbf{K}_{space} \otimes \mathbf{K}_{time})$ , where the spatial covariance matrix  $\mathbf{K}_{space}$   
392 was defined as a stationary Matérn covariance function  $\sigma_{\phi}^2(\kappa \mathbf{D})^{\nu} K_{\nu}(\kappa \mathbf{D}) / (\Gamma(\nu) 2^{\nu-1})$  and the temporal  
393 covariance matrix as  $\mathbf{K}_{time} = \rho^{|t_u - t_o|}$  with  $|\rho| < 1$ , corresponding to the autoregressive stochastic  
394 process with first order (AR1). And the spatio-temporal random effect  $\omega(s, t)$  was assumed  
395 independent of each other in different times and locations, that is  $Cov(\omega_{it}, \omega_{jt'}) = \begin{cases} 0, & \text{if } t \neq t' \\ \sigma_{\phi}^2, & \text{if } t = t' \end{cases}$ . Here  
396  $\mathbf{D}$  donates the Euclidean distance matrix,  $\kappa$  is a scaling parameter and the range  $r = \sqrt{8\nu}/\kappa$ ,  
397 representing the distance at which spatial correlation becomes negligible ( $< 0.1$ ), and  $K_{\nu}$  is the modified  
398 Bessel function of the second kind, with the smoothness parameter  $\nu$  fixed at 1. The latent fields  
399 corresponding to other years are approximated by projection of  $\omega$  using the B-spline basis function of  
400 degree two, that is  $B_{i,1}(t) = \begin{cases} 1, & t_i \leq t < t_{i+1} \\ 0, & \text{otherwise} \end{cases}$  and  $B_{i,m}(t) = \frac{t-t_i}{t_{i+m-1}-t_i} B_{i,m-1}(t) +$   
401  $\frac{t_{i+m}-t}{t_{i+m}-t_{i+1}} B_{i+1,m-1}(t)$ , where  $m$  is the degree of two (Cameletti et al., 2013, Krainski, 2019).  
402 We formulated the model in a Bayesian framework. Minimally informative priors were specified for  
403 parameters and hyper parameters as following:  $\boldsymbol{\beta} \sim N(0, 10^5 \mathbf{I})$ ,  $\log(1/\sigma_{\beta}^2) \sim \log\text{Gamma}(1, 0.1)$ ,  
404  $\log(1/\sigma_{\phi}^2) \sim \log\text{Gamma}(1, 0.01)$ ,  $\log((1 + \rho)/(1 - \rho)) \sim N(0, 0.15)$ , and  $\log(\kappa) \sim N(\log(\sqrt{8}/d), 1)$ ,  
405 where  $d$  is the median distance between the predicted grids.  
406 Additionally, we applied variable selection procedure to identify the best set of predictors for a  
407 parsimonious model. Firstly, the best functional form (continuous or categorical) of continuous variables  
408 was selected, by fitting univariate Bayesian spatial-temporal models with either form as the independent  
409 variable and selecting the form with the lowest log score (Pettit, 1990). Secondly, the best subset method

410 was used to identify the best combination of predictors for the final model. According to previous studies  
411 (*Aung et al., 2017, Forrer et al., 2012, Miyamoto et al., 2014, Wongsaroj et al., 2014*), the infection risk  
412 in community and school may be different, and using different diagnostic methods may differ the  
413 observed prevalence. Thus, the survey type (i.e., community- or school-based) and the diagnostic  
414 methods (i.e., Kato-Katz, FECT, or other methods) were kept in all potential models, while the other ten  
415 environmental and socioeconomic variables were put forth into the Bayesian variable selection process.  
416 The model with the minimum log score was chosen as the final model.

417 Model fitting and variable selection process were conducted through INLA-SPDE approach (*Lindgren*  
418 *et al., 2011, Rue et al., 2009*), using integrated nested Laplace approximation (INLA) package in R  
419 (version 3.5.0). Estimation of risk for *O. viverrini* infection in each year of the study period was done  
420 over a grid with cell size of 5×5 km<sup>2</sup>. And the relative changes of the prevalence were also calculated  
421 using a formula as  $(pp_{st_i} - pp_{st_j})/pp_{st_i}$  for pixel  $s$  between the former year  $t_i$  and the later year  $t_j$ ,  
422 where  $pp$  indicates the median of the posterior estimated distribution of infection risk. The  
423 corresponding risk maps and the prevalence changing maps were produced using ArcGIS (version 10.2).

424 In addition, as population density across the study region were different, the population-adjusted  
425 estimated prevalence and number of infected individuals in 2018 were calculated at the country- and  
426 provincial levels averaging the estimated pixel-level prevalence weighted by population density, that is  
427  $\widehat{pp}_A = \sum_{i \in A} \widehat{pp}_i w_i / \sum_{i \in A} w_i$ . Here  $\widehat{pp}_A$ ,  $\widehat{pp}_i$  and  $w_{it}$  are the estimated prevalence in area  $A$ , estimated  
428 prevalence at pixel  $i$  and population density at pixel  $i$ , respectively, where  $i$  belongs to area  $A$ . Based  
429 on previous studies, for the provinces in Vietnam where there was no evidence of *O. viverrini* infection,  
430 we multiplied the estimated results by zero as the final estimated prevalence (*Doanh & Nawa, 2016*).

431 The R code used for model fitting is publicly available in GitHub ([https://github.com/SYSU-](https://github.com/SYSU-Opisthorchiasis)  
432 Opisthorchiasis).

### 433 **Model validation, sensitivity analysis and test of preferential sampling**

434 Model validation was conducted using the five-fold out-of-sample cross-validation approach. Mean error  
435 ( $ME = \frac{1}{N} \sum (ob_{it} - pp_{it})$ ), mean absolute error ( $MAE = \frac{1}{N} \sum |ob_{it} - pp_{it}|$ ), mean square error ( $MSE =$   
436  $\frac{1}{N} \sum (ob_{it} - pp_{it})^2$ ), and the coverage rate of observations within 95% Bayesian credible intervals (BCI)  
437 were calculated to evaluate the performance of the model. Furthermore, a Bayesian geostatistical model  
438 only based on point-referenced data was fitted and validated, to compare its performance with our joint  
439 modeling approach. In addition, a sensitivity analysis was conducted to evaluate the effects of using the  
440 midpoint values of the intervals as the observed prevalence in one literature from Suwannatrai and  
441 colleagues (*Suwannatrai et al., 2018*), reporting observed prevalence of *O. viverrini* infection in intervals.  
442 Sensitivity analysis was done by using the lower and the upper limits of the intervals in the modeling  
443 analysis.

444 Considering that the data in this study were sourced from different studies, preferential sampling may  
445 exist. We performed a test for preferential sampling of the data. To our knowledge, there hasn't been  
446 method developed for preferential sampling test on observations combined at point- and areal levels. To  
447 compromise, we took centers of the areas with survey data as their locations for the test of preferential  
448 sampling. A fast and intuitive Monte Carlo test developed by Watson was adopted for its advantage of  
449 fast speed and feasibility of data arising from various distributions. We assumed  $S_t$  (i.e., the collection  
450 of sampled points at time  $t$ ) a realization from an inhomogeneous Poisson processes (IPP) under the  
451 condition of  $\omega(s, t)$  (i.e., the spatial-temporal Gaussian random field), that is  $[S_t | \omega(s, t)] =$   
452  $IPP(\lambda(s, t))$ , and  $\log(\lambda(s, t)) = \alpha_0 + h(\omega(s, t))$ , where  $h$  is a monotonic function of  $\omega(s, t)$ . When

453  $h \equiv 0$ , the sampling process is independent from  $\omega(s, t)$ , thus the preferential sampling is not significant.

454 In this way, the problem of detecting preferential sampling can be transformed into the hypothesis testing

455 of  $h \equiv 0$ . If  $h \equiv 0$  is false, for example, in case that  $h$  is a monotonic increasing function of  $\omega(s, t)$ ,

456 then the point patterns  $S_t$  are expected to exhibit an excess of clustering in areas with higher  $\omega(s, t)$ ,

457 thus positive association can be detected between the localized amount of clustering and estimated

458  $\omega(s, t)$ . Firstly, we used the mean of the distances to the  $K$  nearest points ( $D_K$ ) to measure the clustering

459 of locations, and calculated the rank correlation  $r_{t(K)}$  between  $D_K$  and the estimated  $\omega(s, t)$  for survey

460 year  $t$ . Here the estimated  $\omega(s, t)$  was obtained from fitting the Bayesian spatial-temporal joint model.

461 Next, the Monte Carlo method was used to sample realizations from the IPP under the null hypothesis

462 (i.e.,  $h \equiv 0$ ), following which, a set of rank correlations  $r_{t(K)}^M$  were calculated, approximating the

463 distribution of the rank correlations  $\rho_{t(K)}$  under  $h \equiv 0$ . In this way, the nonstandard sampling

464 distribution of the test statistic can be approximated. Finally, we computed the desired empirical  $p$ -value

465 by evaluating the proportion of the Monte Carlo-sampled  $r_{t(K)}^M$  which are more extreme than  $r_{t(K)}$ . We

466 set a sample size of 1000 for each Monte Carlo sampling. We also considered  $K$  from 1 to 8 to measure

467 the clustering of locations and resulted in eight  $p$ -values respective to different  $K$  for each survey year. If

468 one of the  $p$ -values is smaller or equal to 0.05, we considered preferential sampling existing in the

469 corresponding survey year. Since our model could estimate the disease risk each year of the study period,

470 this test was done for each survey year with number of locations more than or equal to 10 (i.e., 1978,

471 1981, 1991, 1995, 1998, 2000, 2001, 2004, 2007, 2008, 2009, 2010, 2011, 2012, 2013, 2014, 2015, and

472 2016). The test was conducted using the package “PStestR” in R (version 3.6.3) (*Watson, 2020*).

473 **Additional information**

474 **Funding**

<b>Funder</b>	<b>Grant reference number</b>	<b>Author</b>
The Sun Yat-Sen University One Hundred Talent Grant	-	Ying-Si Lai
The Natural Science Foundation of Guangdong Province	2017A030313704	Ying-Si Lai
The National Natural Science Foundation of China	81703320	Ying-Si Lai
The CMB Open Competition Program	17-274	Ying-Si Lai

The funders had no role in study design, data collection and interpretation, or the decision to submit the work for publication.

475 **Ethics statement**

476 This work was based on survey data pertaining to the prevalence of opisthorchiasis extracted from open  
477 published peer-reviewed literatures. All data were aggregated and did not contain any information at the  
478 individual or household levels. Therefore, there were no specific ethical issues warranted special  
479 attention.

480 **Acknowledgments**

481 We are grateful to Dr Roy Burstein from Institute for Disease Modeling, Bellevue, Washington, USA for  
482 providing very good suggestions for the manuscript.

483 **Competing interests**

484 The authors declare that no competing interests exist.

## 485 **References**

- 486 Andrews RH, Sithithaworn P, Petney TN. 2008. *Opisthorchis viverrini*: an underestimated parasite in  
487 world health. *Trends in Parasitology* **24**:497-501. doi:10.1016/j.pt.2008.08.011
- 488 Aung WPP, Htoon TT, Tin HH, Thinn KK, Sanpool O, Jongthawin J, Sadaow L, Phosuk I, Rodpai R,  
489 Intapan PM, Maleewong W. 2017. First report and molecular identification of *Opisthorchis viverrini*  
490 infection in human communities from Lower Myanmar. *PLOS ONE* **12**:e177130.  
491 doi:10.1371/journal.pone.0177130
- 492 Baker M, Hanson C, Ottesen EA, Linehan M, Torres S, Sankara D, Zoerhoff KL, Weaver A, Kabore A.  
493 2011. Integrated Implementation of Programs Targeting Neglected Tropical Diseases through Preventive  
494 Chemotherapy: Proving the Feasibility at National Scale. *The American Journal of Tropical Medicine*  
495 *and Hygiene* **84**:5-14. doi:10.4269/ajtmh.2011.10-0411
- 496 Banerjee S, Carlin BP, Gelfand AE. 2014. Hierarchical Modeling and Analysis for Spatial Data, Second  
497 Edition. Boca Raton, FL: Chapman & Hall/CRC Press.
- 498 Cameletti M, Lindgren F, Simpson D, Rue H. 2013. Spatio-temporal modeling of particulate matter  
499 concentration through the SPDE approach. *Asta-Advances in Statistical Analysis* **97**:109-31.  
500 doi:10.1007/s10182-012-0196-3
- 501 Chai JY, Yong TS, Eom KS, Min DY, Jeon HK, Kim TY, Jung BK, Sisabath L, Insisiengmay B,  
502 Phommasack B, Rim HJ. 2013. Hyperendemicity of *Haplorchis taichui* Infection among Riparian People  
503 in Saravane and Champasak Province, Lao PDR. *The Korean Journal of Parasitology* **51**:305-311.  
504 doi:10.3347/kjp.2013.51.3.305
- 505 Chai JY, Yong TS, Eom KS, Min DY, Jeon HK, Kim TY, Jung BK, Sisabath L, Insisiengmay B,  
506 Phommasack B, Rim HJ. 2010. Prevalence of the Intestinal Flukes *Haplorchis taichui* and *H. yokogawai*  
507 in a Mountainous Area of Phongsaly Province, Lao PDR. *The Korean Journal of Parasitology* **48**:339-  
508 342. doi:10.3347/kjp.2010.48.4.339
- 509 Charoensuk L, Subrungruang I, Mungthin M, Pinlaor S, Suwannahitatorn P. 2019. Comparison of stool  
510 examination techniques to detect *Opisthorchis viverrini* in low intensity infection. *Acta Tropica* **191**:13-  
511 16. doi:10.1016/j.actatropica.2018.12.018
- 512 Diggle PJ, Menezes R, Su TL. 2010. Geostatistical inference under preferential sampling. *Journal of the*  
513 *Royal Statistical Society Series C-Applied Statistics* **59**:191-232. doi:10.1111/j.1467-9876.2009.00701.x
- 514 Dinsdale D, Salibian-Barrera M. 2019. Methods for preferential sampling in geostatistics. *Journal of the*  
515 *Royal Statistical Society Series C-Applied Statistics* **68**:181-98. doi:10.1111/rssc.12286
- 516 Doanh PN, Nawa Y. 2016. *Clonorchis sinensis* and *Opisthorchis spp.* in Vietnam: current status and  
517 prospects. *Transactions of the Royal Society of Tropical Medicine and Hygiene* **110**:13-20.  
518 doi:10.1093/trstmh/trv103
- 519 Dunn JC, Turner HC, Tun A, Anderson RM. 2016. Epidemiological surveys of, and research on, soil-  
520 transmitted helminths in Southeast Asia: a systematic review. *Parasites & Vectors* **9**:31.  
521 doi:10.1186/s13071-016-1310-2



- 522 Echaubard P, Sripa B, Mallory FF, Wilcox BA. 2016. The role of evolutionary biology in research and  
523 control of liver flukes in Southeast Asia. *Infection, Genetics and Evolution* **43**:381-397.  
524 doi:10.1016/j.meegid.2016.05.019
- 525 Elith J, Phillips SJ, Hastie T, Dud k M, Chee YE, Yates CJ. 2011. A statistical explanation of MaxEnt  
526 for ecologists. *Diversity and Distributions* **17**:43-57. doi:10.1111/j.1472-4642.2010.00725.x
- 527 Forrer A, Sayasone S, Vounatsou P, Vonghachack Y, Bouakhasith D, Vogt S, Glaser R, Utzinger J,  
528 Akkhavong K, Odermatt P. 2012. Spatial distribution of, and risk factors for, *Opisthorchis viverrini*  
529 infection in southern Lao PDR. *PLOS Neglected Tropical Diseases* **6**:e1481.  
530 doi:10.1371/journal.pntd.0001481
- 531 Fürst T, Keiser J, Utzinger J. 2012. Global burden of human food-borne trematodiasis: a systematic  
532 review and meta-analysis. *The Lancet Infectious Diseases* **12**:210-221. doi:10.1016/S1473-  
533 3099(11)70294-8
- 534 Gelfand AE, Banerjee S. 2017. Bayesian Modeling and Analysis of Geostatistical Data. *Annual Review*  
535 *of Statistics and Its Application* **4**:245-266. doi:10.1146/annurev-statistics-060116-054155
- 536 Gelfand AE, Sahu SK, Holland DM. 2012. On the effect of preferential sampling in spatial prediction.  
537 *Environmetrics* **23**:565-78. doi:10.1002/env.2169
- 538 Gordon C, Kurscheid J, Williams G, Clements A, Li Y, Zhou X, Utzinger J, McManus D, Gray D. 2019.  
539 Asian Schistosomiasis: Current Status and Prospects for Control Leading to Elimination. *Tropical*  
540 *Medicine and Infectious Disease* **4**:40. doi:10.3390/tropicalmed4010040
- 541 Grundy-Warr C, Andrews RH, Sithithaworn P, Petney TN, Sripa B, Laithavewat L, Ziegler AD. 2012.  
542 Raw attitudes, wetland cultures, life-cycles: Socio-cultural dynamics relating to *Opisthorchis viverrini*  
543 in the Mekong Basin. *Parasitology International* **61**:65-70. doi:10.1016/j.parint.2011.06.015
- 544 Havelaar AH, Kirk MD, Torgerson PR, Gibb HJ, Hald T, Lake RJ, Praet N, Bellinger DC, de Silva NR,  
545 Gargouri N, Speybroeck N, Cawthorne A, Mathers C, Stein C, Angulo FJ, Devleeschauwer B. 2015.  
546 World Health Organization Global Estimates and Regional Comparisons of the Burden of Foodborne  
547 Disease in 2010. *PLOS Medicine* **12**:e1001923. doi:10.1371/journal.pmed.1001923
- 548 International Agency for Research on Cancer. 1994. Schistosomes, liver flukes and *Helicobacter pylori*.  
549 *IARC Monographs on the Evaluation of Carcinogenic Risks to Humans* **61**:1-241.  
550 <https://www.ncbi.nlm.nih.gov/books/NBK487782/>
- 551 Jongsuksuntigul P, Imsomboon T. 2003. Opisthorchiasis control in Thailand. *Acta Tropica* **88**:229-232.  
552 doi:10.1016/j.actatropica.2003.01.002
- 553 Jongsuksuntigul P, Manatrakul D, T TW, Krisanamara P, Sawatdimongkol S, Wongsaroj S. 2003.  
554 Evaluation of the Helminthiasis Control Program in Thailand at the End of the 8th Health Development  
555 Plan. *The Journal of Tropical Medicine and Parasitology* **26**:18-45. [https://li01.tci-](https://li01.tci-thaijo.org/index.php/JTMP/article/view/14757)  
556 [thaijo.org/index.php/JTMP/article/view/14757](https://li01.tci-thaijo.org/index.php/JTMP/article/view/14757)
- 557 Kaewpitoon N, Kaewpitoon SJ, Pengsaa P. 2008. Opisthorchiasis in Thailand: review and current status.  
558 *World Journal of Gastroenterology* **14**:2297-2302. doi:10.3748/wjg.14.2297
- 559 Karagiannis-Voules D, Biedermann P, Ekpo UF, Garba A, Langer E, Mathieu E, Midzi N, Mwinzi P,

- 560 Polderman AM, Raso G, Sacko M, Talla I, Tchuenté LT, Touré S, Winkler MS, Utzinger J, Vounatsou  
561 P. 2015. Spatial and temporal distribution of soil-transmitted helminth infection in sub-Saharan Africa:  
562 a systematic review and geostatistical meta-analysis. *The Lancet Infectious Diseases* **15**:74-84.  
563 doi:10.1016/S1473-3099(14)71004-7
- 564 Keiser J, Utzinger J. 2010. The Drugs We Have and the Drugs We Need Against Major Helminth  
565 Infections. *Advances in Parasitology* **73**:197-230. doi:10.1016/S0065-308X(10)73008-6
- 566 Keiser J, Utzinger J. 2005. Emerging Foodborne Trematodiasis. *Emerging Infectious Diseases* **11**:1507-  
567 1514. doi:10.3201/eid1110.050614
- 568 Keiser, Jennifer. 2019. Highlighting Operational and Implementation Research for Control of  
569 Helminthiasis. GB: Academic Press.
- 570 Khieu V, Furst T, Miyamoto K, Yong TS, Chai JY, Huy R, Muth S, Odermatt P. 2019. Is *Opisthorchis*  
571 *viverrini* Emerging in Cambodia? *Advances in Parasitology* **103**:31-73. doi:10.1016/bs.apar.2019.02.002
- 572 Krainski ET. 2019. Advanced spatial modeling with stochastic partial differential equations using R and  
573 INLA. Boca Raton: CRC Press, Taylor & Francis Group.
- 574 Laoprom N, Laithavewat L, Kopolrat K, Kiatsopit N, Kaewkes S, Chantalux S, Mongkolsin C,  
575 Chanmaha B, Andrews RH, Petney TN, Sithithaworn P. 2016. Evaluation of a commercial stool  
576 concentrator kit compared to direct smear and formalin-ethyl acetate concentration methods for diagnosis  
577 of parasitic infection with special reference to *Opisthorchis viverrini* sensu lato in Thailand. *Southeast*  
578 *Asian Journal of Tropical Medicine and Public Health* **47**:890-900. PMID: 29620342
- 579 Lindgren F, Rue H, Lindström J, Kent JT, Diggle PJ, Illian JB, Simpson DP, Gneiting T, Scheuerer M,  
580 Furrer R, Furrer E, Nychka D, Fearnhead P, Challenor P, Andrianakis Y, Stephenson G, Møller J, Hu X,  
581 Simpson D, Bolin D, Brown PE, Cameletti M, Martino S, Cooley D, Hoeting JA, Crujeiras RM, Prieto  
582 A, Marco ARF, Fuglstad G, Gelman A, Guttorp P, Das B, Haaland B, Nott DJ, Haslett J, Joshi C, Garreta  
583 V, Höhle M, Ippoliti L, Martin RJ, Bhansali RJ, Jandhyala VK, Fotopoulos SB, Jun M, Kongsgård HW,  
584 Lasinio GJ, Pollice A, Lee C, Lee WT, Kaufman CG, Li B, Genton MG, Lindgren G, Mardia KV, Mateu  
585 J, Mondal D, Müller WG, Waldl H, Ottavi A, Papaspiliopoulos O, Porcu E, Saez M, Schmidt AM, Stein  
586 A, Switzer P, Turkman K, Wikle CK, Hooten MB. 2011. An explicit link between Gaussian fields and  
587 Gaussian Markov random fields: the stochastic partial differential equation approach. *Journal of the*  
588 *Royal Statistical Society: Series B (Statistical Methodology)* **73**:423-498. doi:10.1111/j.1467-  
589 9868.2011.00777.x
- 590 Lovis L, Mak TK, Phongluxa K, Soukhathammavong P, Sayasone S, Akkhavong K, Odermatt P, Keiser  
591 J, Felger I. 2009. PCR Diagnosis of *Opisthorchis viverrini* and *Haplorchis taichui* Infections in a Lao  
592 Community in an Area of Endemicity and Comparison of Diagnostic Methods for Parasitological Field  
593 Surveys. *Journal of Clinical Microbiology* **47**:1517-1523. doi:10.1128/JCM.02011-08
- 594 Lu Y, Gonzales G, Chen S, Li H, Cai Y, Chu Y, Ai L, Chen M, Chen H, Chen J. 2017. Urgent needs in  
595 fostering neglected tropical diseases (NTDs) laboratory capacity in WHO Western Pacific Region:  
596 results from the external quality assessment on NTDs diagnosis in 2012-2015. *Infectious Diseases of*  
597 *Poverty* **6**:106-108. doi:10.1186/s40249-017-0319-x
- 598 Maipanich W, Waikagul J, Watthanakulpanich D, Muennoo C, Sanguankiat S. 2004. Intestinal

- 599 Parasitic Infections among Inhabitants of the North, West-central and Eastern Border Areas of  
600 Thailand. *The Journal of Tropical Medicine and Parasitology* **27**:51-58. [https://scholar.google.com/scholar\\_lookup?journal=J+Trop+Med+Parasitol&title=Intestinal+parasitic+infections+among+inhabitants+of+the+North,+West-central+and+Eastern+border+areas+of+Thailand&author=W+Maipanich&author=J+Waikagul&author=D+Watthanakulpanich&author=C+Muennoo&author=S+Sanguankiat&volume=27&publication\\_year=2004&pages=51-58&](https://scholar.google.com/scholar_lookup?journal=J+Trop+Med+Parasitol&title=Intestinal+parasitic+infections+among+inhabitants+of+the+North,+West-central+and+Eastern+border+areas+of+Thailand&author=W+Maipanich&author=J+Waikagul&author=D+Watthanakulpanich&author=C+Muennoo&author=S+Sanguankiat&volume=27&publication_year=2004&pages=51-58&)  
601  
602  
603  
604
- 605 Miyamoto K, Kirinoki M, Matsuda H, Hayashi N, Chigusa Y, Sinuon M, Chuor CM, Kitikoon V. 2014.  
606 Field survey focused on *Opisthorchis viverrini* infection in five provinces of Cambodia. *Parasitology*  
607 *International* **63**:366-373. doi:10.1016/j.parint.2013.12.003
- 608 Moher D, Liberati A, Tetzlaff J, Altman DG. 2010. Preferred reporting items for systematic reviews and  
609 meta-analyses: The PRISMA statement. *International Journal of Surgery* **8**:336-341.  
610 doi:10.1016/j.ijsu.2010.02.007
- 611 MOPH. 2014. National Survey on Helminthiasis in Thailand. Department of Disease Control, Ministry  
612 of Public Health, Bangkok, Thailand
- 613 Moraga P, Cramb SM, Mengersen KL, Pagano M. 2017. A geostatistical model for combined analysis  
614 of point-level and area-level data using INLA and SPDE. *Spatial Statistics* **21**:27-41.  
615 doi:10.1016/j.spasta.2017.04.006
- 616 Ogorodova LM, Fedorova OS, Sripa B, Mordvinov VA, Katokhin AV, Keiser J, Odermatt P, Brindley  
617 PJ, Mayboroda OA, Velavan TP, Freidin MB, Sazonov AE, Saltykova IV, Pakharukova MY, Kovshirina  
618 YV, Kaloulis K, Krylova OY, Yazdanbakhsh M. 2015. Opisthorchiasis: An Overlooked Danger. *PLOS*  
619 *Neglected Tropical Diseases* **9**:e3563. doi:10.1371/journal.pntd.0003563
- 620 Pati D, Reich BJ, Dunson DB. 2011. Bayesian geostatistical modelling with informative sampling  
621 locations. *Biometrika* **98**:35-48. doi:10.1093/biomet/asq067
- 622 Petney TN, Andrews RH, Saijuntha W, Wenz-Mücke A, Sithithaworn P. 2013. The zoonotic, fish-borne  
623 liver flukes *Clonorchis sinensis*, *Opisthorchis felinus* and *Opisthorchis viverrini*. *International Journal*  
624 *for Parasitology* **43**:1031-1046. doi:10.1016/j.ijpara.2013.07.007
- 625 Pettit LI. 1990. The Conditional Predictive Ordinate for the Normal Distribution. *Journal of the Royal*  
626 *Statistical Society. Series B (Methodological)* **52**:175-184. doi:10.1111/j.2517-6161.1990.tb01780.x
- 627 Phimpraphai W, Tangkawattana S, Kasemsuwan S, Sripa B. 2018. Social Influence in Liver Fluke  
628 Transmission: Application of Social Network Analysis of Food Sharing in Thai Isaan Culture. *Advances*  
629 *in Parasitology* **101**:97-124. doi:10.1016/bs.apar.2018.05.004
- 630 Phimpraphai W, Tangkawattana S, Sereerak P, Kasemsuwan S, Sripa B. 2017. Social network analysis  
631 of food sharing among households in opisthorchiasis endemic villages of Lawa Lake, Thailand. *Acta*  
632 *Tropica* **169**:150-156. doi:10.1016/j.actatropica.2017.02.001
- 633 Prueksapanich P, Piyachaturawat P, Aumpansub P, Ridthit W, Chaiteerakij R, Rerknimitr R. 2018. Liver  
634 Fluke-Associated Biliary Tract Cancer. *Gut and Liver* **12**:236-245. doi:10.5009/gnl17102
- 635 Qian M, Zhou X. 2019. Human liver flukes in China and ASEAN: Time to fight together. *PLOS*  
636 *Neglected Tropical Diseases* **13**:e7214. doi:10.1371/journal.pntd.0007214

- 637 Rue H, Martino S, Chopin N. 2009. Approximate Bayesian inference for latent Gaussian models by using  
638 integrated nested Laplace approximations. *Journal of the Royal Statistical Society: Series B (Statistical  
639 Methodology)* **71**:319-392. doi:10.1111/j.1467-9868.2008.00700.x
- 640 Saijuntha W, Sithithaworn P, Kaitsopit N, Andrews RH, Petney TN. 2014. Liver flukes: Clonorchis and  
641 Opisthorchis. *Advances in Experimental Medicine and Biology* **766**:153-199. doi:10.1007/978-1-4939-  
642 0915-5\_6
- 643 Sanderson EW, Jaiteh M, Levy MA, Redford KH, Woolmer G. 2002. The Human Footprint and the Last  
644 of the Wild: The human footprint is a global map of human influence on the land surface, which suggests  
645 that human beings are stewards of nature, whether we like it or not. *BioScience* **52**:891-904.  
646 doi:10.1641/0006-3568(2002)052[0891:THFATL]2.0.CO;2
- 647 Sato M, Pongvongsa T, Sanguankiat S, Yoonuan T, Dekumyoy P, Kalambaheti T, Keomoungkhoun M,  
648 Phimmayoi I, Boupha B, Moji K, Waikagul J. 2010. Copro-DNA diagnosis of *Opisthorchis viverrini* and  
649 *Haplorchis taichui* infection in an endemic area of Lao PDR. *The Southeast Asian Journal of Tropical  
650 Medicine and Public Health* **41**:28. PMID: 20578479
- 651 Sayasone S, Utzinger J, Akkhavong K, Odermatt P. 2015. Repeated stool sampling and use of multiple  
652 techniques enhance the sensitivity of helminth diagnosis: A cross-sectional survey in southern Lao  
653 People's Democratic Republic. *Acta Tropica* **141**:315-321. doi:10.1016/j.actatropica.2014.09.004
- 654 Sithithaworn P, Andrews RH, Van De N, Wongsaroj T, Sinuon M, Odermatt P, Nawa Y, Liang S,  
655 Brindley PJ, Sripa B. 2012. The current status of opisthorchiasis and clonorchiasis in the Mekong Basin.  
656 *Parasitology International* **61**:10-16. doi:10.1016/j.parint.2011.08.014
- 657 Smith BJ, Yan J, Cowles MK. 2008. Unified Geostatistical Modeling for Data Fusion and Spatial  
658 Heteroskedasticity with R Package ramps. *Journal of Statistical Software* **25**. doi:10.18637/jss.v025.i10
- 659 Sohn WM, Jung BK, Hong SJ, Lee KH, Park JB, Kim HS, Cho S, Htoon TT, Tin HH, Chai JY. 2019.  
660 Low-Grade Endemicity of Opisthorchiasis, Yangon, Myanmar. *Emerging Infectious Diseases* **25**:1435-  
661 1437. doi:10.3201/eid2507.190495
- 662 Sohn WM, Shin EH, Yong TS, Eom KS, Jeong HG, Sinuon M, Socheat D, Chai JY. 2011. Adult  
663 *Opisthorchis viverrini* Flukes in Humans, Takeo, Cambodia. *Emerging Infectious Diseases* **17**:1302-  
664 1304. doi:10.3201/eid1707.102071
- 665 Sripa B, Kaewkes S, Intapan PM, Maleewong W, Brindley PJ. 2010. Food-Borne Trematodiasis in  
666 Southeast Asia: Epidemiology, Pathology, Clinical Manifestation and Control. *Advances in Parasitology*  
667 **72**:305-350. doi:10.1016/S0065-308X(10)72011-X
- 668 Sripa B, Tangkawattana S, Laha T, Kaewkes S, Mallory FF, Smith JF, Wilcox BA. 2015. Toward  
669 integrated opisthorchiasis control in northeast Thailand: The Lawa project. *Acta Tropica* **141**:361-367.  
670 doi:10.1016/j.actatropica.2014.07.017
- 671 Stevens GA, Alkema L, Black RE, Boerma JT, Collins GS, Ezzati M, Grove JT, Hogan DR, Hogan MC,  
672 Horton R, Lawn JE, Marušić A, Mathers CD, Murray CJL, Rudan I, Salomon JA, Simpson PJ, Vos T,  
673 Welch V. 2016. Guidelines for Accurate and Transparent Health Estimates Reporting: the GATHER  
674 statement. *PLOS Medicine* **13**:e1002116. doi:10.1371/journal.pmed.1002056

- 675 Suwannatrai A, Pratumchart K, Suwannatrai K, Thinkhamrop K, Chaiyos J, Kim CS,  
676 Suwanweerakamtorn R, Boonmars T, Wongsaroj T, Sripa B. 2017. Modeling impacts of climate change  
677 on the potential distribution of the carcinogenic liver fluke, *Opisthorchis viverrini*, in Thailand.  
678 *Parasitology Research* **116**:243-250. doi:10.1007/s00436-016-5285-x
- 679 Suwannatrai A, Saichua P, Haswell M. 2018. Epidemiology of *Opisthorchis viverrini* Infection.  
680 *Advances in Parasitology* **101**:41-67. doi:10.1016/bs.apar.2018.05.002
- 681 UN. 2015. Transforming our world: the 2030 Agenda for Sustainable Development. United Nations, New  
682 York, NY, USA
- 683 Utazi CE, Thorley J, Alegana VA, Ferrari MJ, Nilsen K, Takahashi S, Metcalf C, Lessler J, Tatem AJ.  
684 2019. A spatial regression model for the disaggregation of areal unit based data to high-resolution grids  
685 with application to vaccination coverage mapping. *Statistical Methods in Medical Research* **28**:3226-  
686 3241. doi:10.1177/0962280218797362
- 687 Van De N. 2004. Fish-borne trematodes in Vietnam. *Southeast Asian Journal of Tropical Medi  
688 cine and Public Health* **35**:299-301. [https://pdfs.semanticscholar.org/4952/fe365526c6cf9bb2e8157  
689 1d151450d18ef0f.pdf](https://pdfs.semanticscholar.org/4952/fe365526c6cf9bb2e81571d151450d18ef0f.pdf)
- 690 Wang YC, Feng CC, Sithithaworn P. 2013. Environmental determinants of *Opisthorchis viverrini*  
691 prevalence in northeast Thailand. *Geospat Health* **8**:111-23. doi:10.4081/gh.2013.59
- 692 Watson J. 2020. A fast Monte Carlo test for preferential sampling. *arXiv*.  
693 <https://arxiv.org/abs/2003.01319v2> [Preprint]
- 694 WHO. 2002. Joint WHO/FAO Workshop on Foodborne Trematode Infections in Asia. World Health  
695 Organization, Geneva
- 696 WHO. 2009. Report of the WHO Expert Consultation on Foodborne Trematode Infections and  
697 Taeniasis/Cysticercosis. World Health Organization, Geneva
- 698 WHO. 2012. Accelerating work to overcome the global impact of neglected tropical diseases. World  
699 Health Organization, Geneva
- 700 Wijit A, Morakote N, Klinchid J. 2013. High Prevalence of Haplorchiasis in Nan and Lampang Provinces,  
701 Thailand, Proven by Adult Worm Recovery from Suspected Opisthorchiasis Cases. *The Korean Journal  
702 of Parasitology* **51**:767-769. doi:10.3347/kjp.2013.51.6.767
- 703 Wongsaroj T, Nithikathkul C, Rojkitikul W, Nakai W, Royal L, Rammasut P. 2014. National survey of  
704 helminthiasis in Thailand. *Asian Biomedicine* **8**:779-783. doi:10.5372/1905-7415.0806.357
- 705 Yong T, Chai J, Sohn W, Eom KS, Jeoung H, Hoang E, Yoon C, Jung B, Lee S, Sinuon M, Socheat D.  
706 2014. Prevalence of Intestinal Helminths among Inhabitants of Cambodia (2006-2011). *The Korean  
707 Journal of Parasitology* **52**:661-666. doi:10.3347/kjp.2014.52.6.661
- 708 Ziegler AD, Andrews RH, Grundy-Warr C, Sithithaworn P, Petney TN. 2011. Fighting Liverflukes with  
709 Food Safety Education. *Science* **331**:282-283. doi:10.1126/science.331.6015.282-b
- 710

711 **Tables**

712 **Table 1. Overview of opisthorchiasis survey data in Southeast Asia**

	<b>Cambodia</b>	<b>Lao PDR</b>	<b>Myanmar</b>	<b>Thailand</b>	<b>Vietnam</b>	<b>Total</b>
Relevant papers	14	43	2	97	15	168
Total surveys/locations	91/73	156/99	6/6	770/335	71/64	1094/574
Survey type (surveys/locations)						
School	33/31	4/4	0/0	13/13	0/0	50/48
Community	58/46	152/94	6/6	757/325	71/64	1044/535
Location type (surveys/locations)						
Point-level	55/43	63/51	3/3	125/105	5/5	251/207
ADM3-level	0/0	0/0	0/0	53/51	0/0	53/51
ADM2-level	14/11	35/27	0/0	159/102	2/2	210/142
ADM1-level	22/19	58/18	3/3	433/77	64/57	580/174
Period	1998-2016	1989-2016	2015-2016	1978-2018	1991-2015	1978-2018
Year of Survey (surveys/locations)						
1978-1982	0/0	0/0	0/0	123/115	0/0	123/115
1983-1987	0/0	0/0	0/0	7/6	0/0	7/6
1988-1992	0/0	2/2	0/0	97/89	1/1	100/92
1993-1997	0/0	9/5	0/0	18/18	6/2	33/25
1998-2002	25/22	28/22	0/0	103/103	2/2	158/149
2003-2007	3/2	26/24	0/0	15/15	1/1	45/42
2008-2012	62/48	75/54	0/0	166/153	9/8	312/263
2013-2018	1/1	16/16	6/6	241/201	52/52	316/276
Diagnostic methods (surveys/locations)						
Kato-Katz	86/70	128/83	3/3	212/166	7/7	436/329
FECT	2/2	8/7	3/3	109/99	0/0	122/111
Stoll's	0/0	0/0	0/0	38/28	0/0	38/28
PCR	0/0	5/4	0/0	1/1	0/0	6/5
Combined	3/3	14/13	0/0	14/12	0/0	31/28
Others	0/0	1/1	0/0	6/6	0/0	7/7
NS*	0/0	5/5	0/0	391/111	64/57	460/173
Mean prevalence	10.56%	39.50%	4.93%	14.25%	2.65%	16.74%

713 \*NS: not stated or missing

714

715 **Table 2. Posterior summaries of model parameters**

	Estimated median (95% BCI)	OR	Prob (%) <sup>†</sup>
Intercept	-4.51 (-5.08, -3.94)		
Survey type			
School-based survey	Ref	Ref	-
Community-based survey	0.96 (0.70, 1.23)	2.61 (2.10, 3.42)	> 99.99%
Diagnostic methods			
Kato-Katz	Ref	Ref	Ref
FECT	-0.28 (-0.49, -0.07)	0.76 (0.61, 0.93)	0.80
Other methods	0.01 (-0.07, 0.10)	1.01 (0.93, 1.12)	64.20
Land surface temperature (LST) in the daytime (°C)			
< 30.65	Ref	Ref	Ref
30.65 - 32.07	0.25 (-0.001, 0.50)	1.28 (0.999, 1.65)	97.40
> 32.07	0.07 (-0.18, 0.33)	1.07 (0.84, 1.39)	73.40
Human influence index	-0.01 (-0.02, -0.003)	0.99 (0.98, 1.00)	0.80
Distance to the nearest open water bodies (km)	0.24 (-1.45, 1.94)	1.27 (0.23, 6.96)	60.20
Elevation (m)	-0.003 (-0.005, -0.001)	0.997 (0.995, 0.999)	< 0.10
Travel time to the nearest big city (min)	0.0001 (-0.002, 0.002)	1.00 (0.998, 1.002)	56.60

716 <sup>†</sup>Posterior probability of  $OR > 1$ .

717

718 **Table 3. Population-adjusted estimated prevalence and number of individuals infected with**

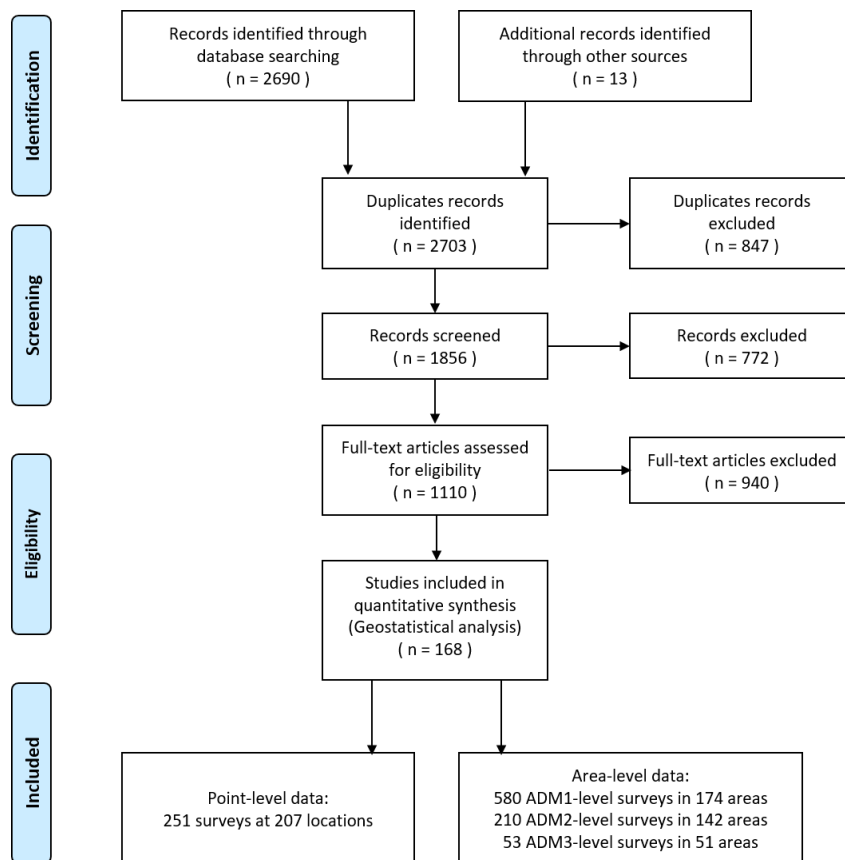
719 ***O. viverrini* in endemic countries of Southeast Asia in 2018\***

	Population ( $\times 10^3$ )	Prevalence (%)	No. infected ( $\times 10^3$ )
Cambodia	16227.39	6.15% (2.41%, 11.73%)	997.95 (390.46, 1903.46)
Lao PDR	6960.28	35.21% (28.50%, 40.70%)	2450.54 (1983.38, 2832.96)
Thailand	69112.64	9.71% (7.98%, 12.17%)	6708.68 (5514.87, 8411.98)
Vietnam	96421.69	2.15% (0.73%, 4.40%)	2073.72 (703.46, 4244.85)
Total	188722.01	6.57% (5.35%, 7.98%)	12389.69 (10099.29, 15060.18)

720 \*Estimates were based on gridded population of 2018 and the median and 95% BCI of the posterior

721 estimated distribution of the infection risk in 2018.

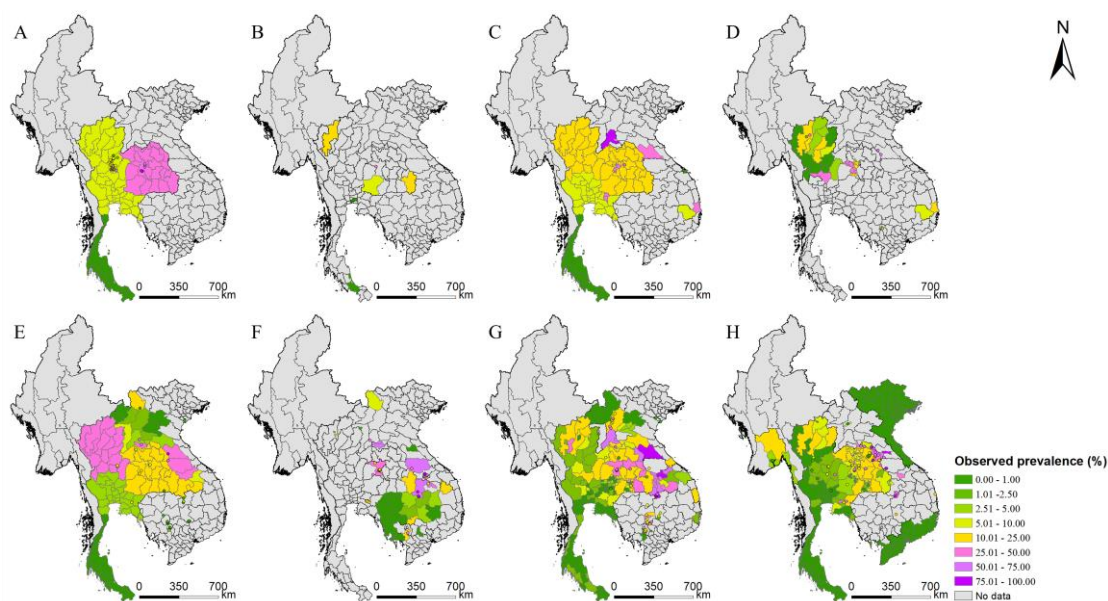
722 **List of Figures**



723

724 **Figure 1. Data search and selection flow chart.**

725

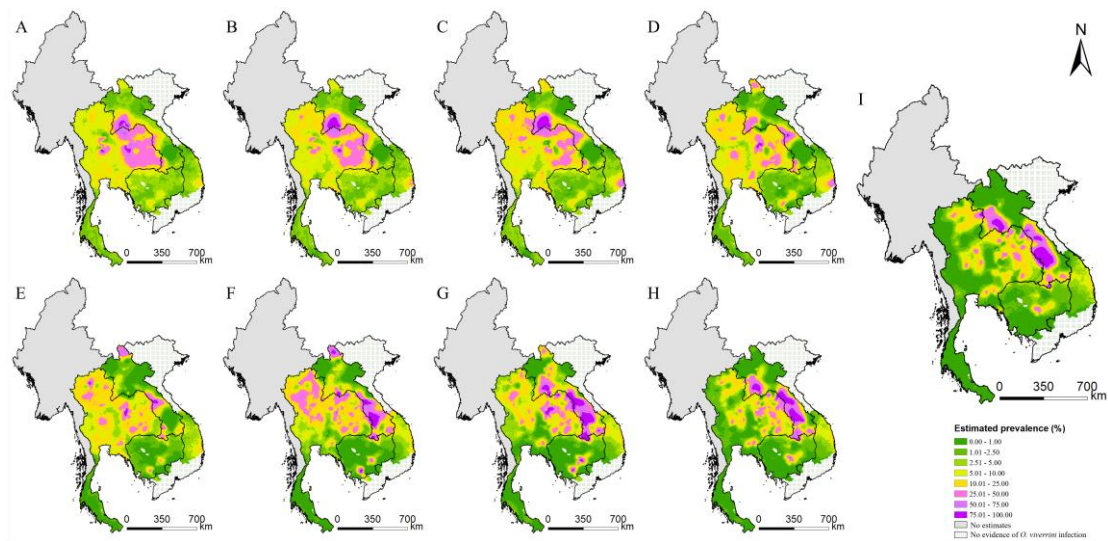


726



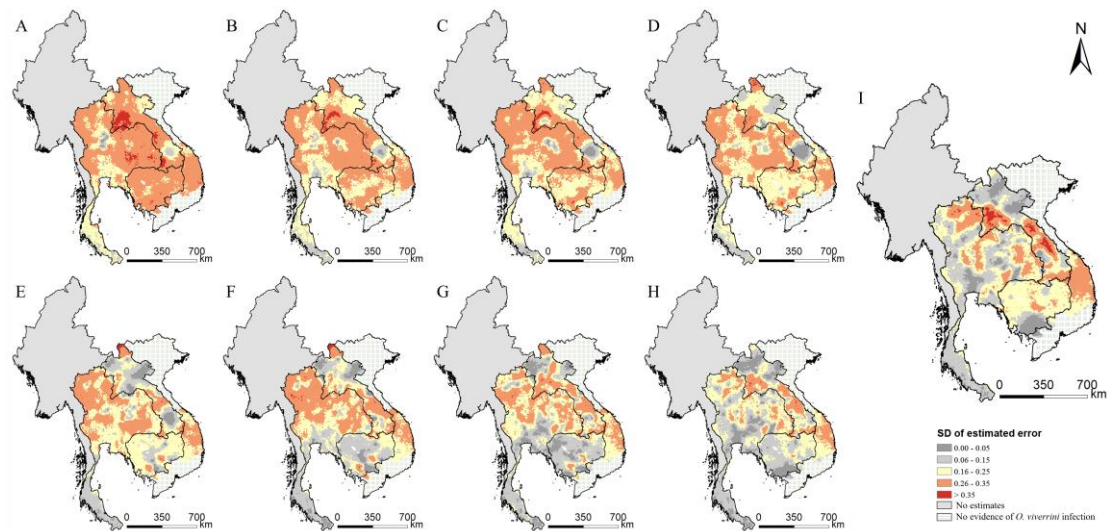
727 **Figure 2. Survey locations and observed prevalence of *O. viverrini* infection in endemic countries**  
728 **of Southeast Asia.** (A) 1978-1982, (B) 1983-1987, (C) 1988-1992, (D) 1993-1997, (E) 1998-2002, (F)  
729 2003-2007, (G) 2008-2012, and (H) 2013-2018. (Source Data: Figure 2-source data 1, and Figure 2-  
730 source data 2)

731



733 **Figure 3. Model-based estimated risk maps of *O. viverrini* infection in endemic countries of**  
734 **Southeast Asia in different years.** Estimated prevalence based on the median of the posterior estimated  
735 distribution of infection risk in (A) 1978, (B) 1983, (C) 1988, (D) 1993, (E) 1998, (F) 2003, (G) 2008,  
736 (H) 2013, and (I) 2018. (Source Data: Figure 3-source data 1)

737



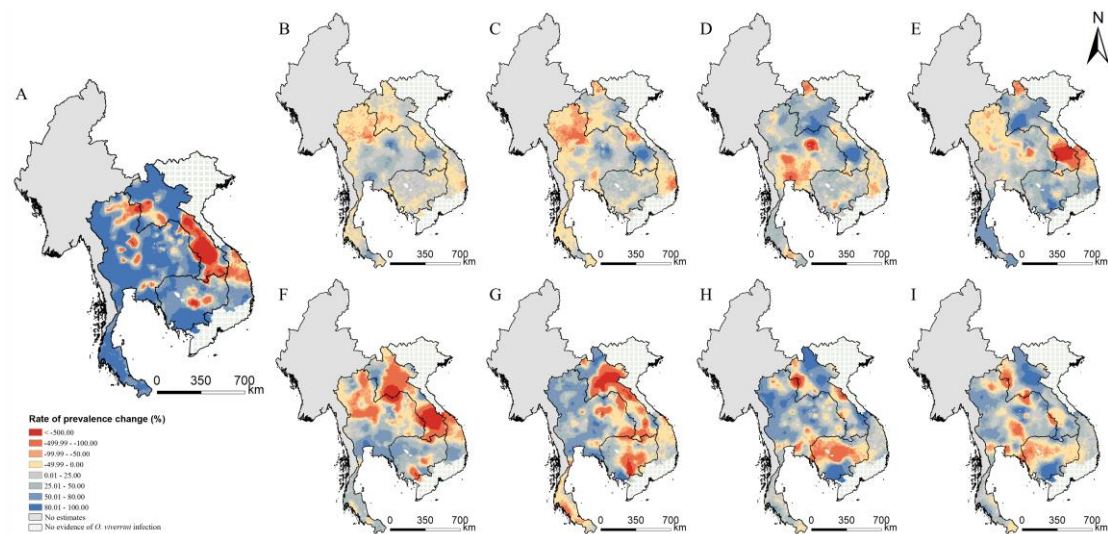
738

739 **Figure 4. The estimation uncertainty in endemic countries of Southeast Asia in different years. (A)**

740 1978, (B) 1983, (C) 1988, (D) 1993, (E) 1998, (F) 2003, (G) 2008, (H) 2013, and (I) 2018. (Source Data:

741 Figure 4-source data 1)

742



743

744 **Figure 5. Changes of *O. viverrini* infection risk across time periods. Changes were calculated by the**

745 median of the posterior estimated distribution of infection risk for the former time period minus that for

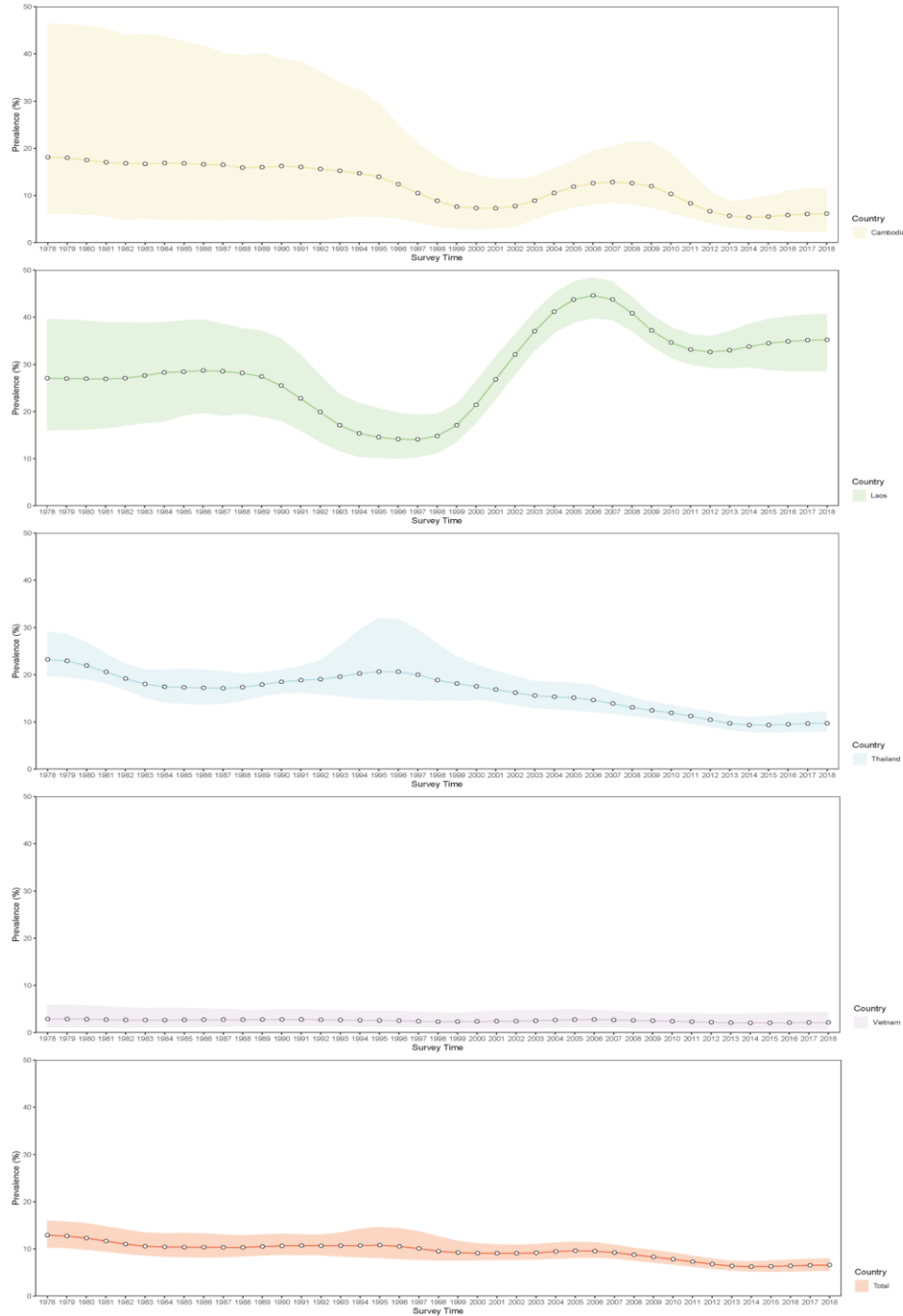
746 the latter time period divided by that for the former time period. The risk changes (A) between 1978 and

747 2018; (B) between 1978 and 1983; (C) between 1983 and 1988; (D) between 1988 and 1993; (E) between

748 1993 and 1998; (F) between 1998 and 2003; (G) between 2003 and 2008; (H) between 2008 and 2013;

749 and (I) between 2013 and 2018. (Source Data: Figure 5-source data 1)

750

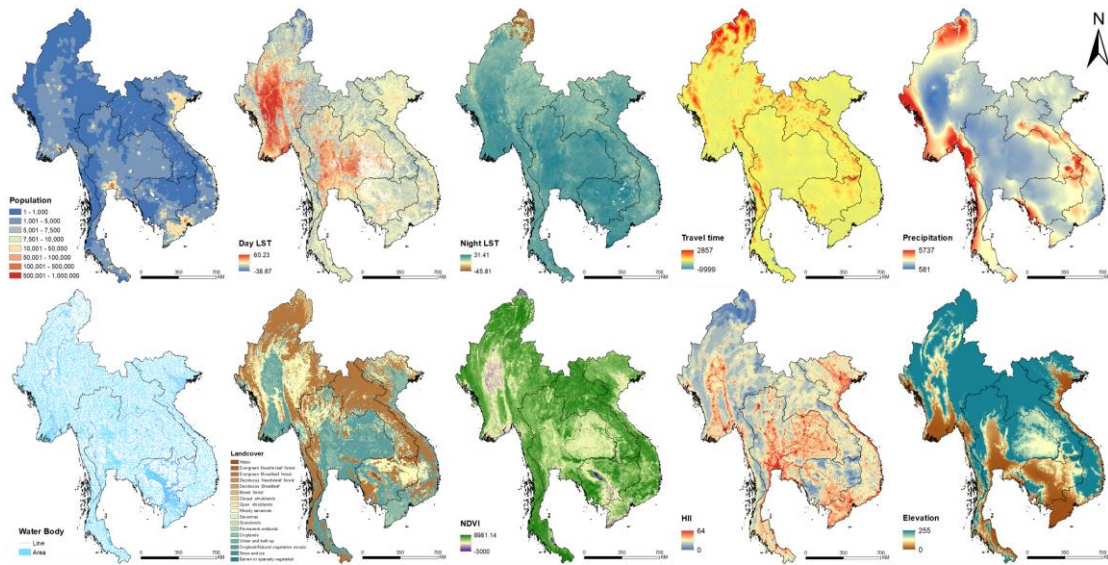


751

752 **Figure 6. Trends in estimated prevalence of *O. viverrini* infection in Southeast Asia.** (Source Data:

753 Figure 6-source data 1)

754

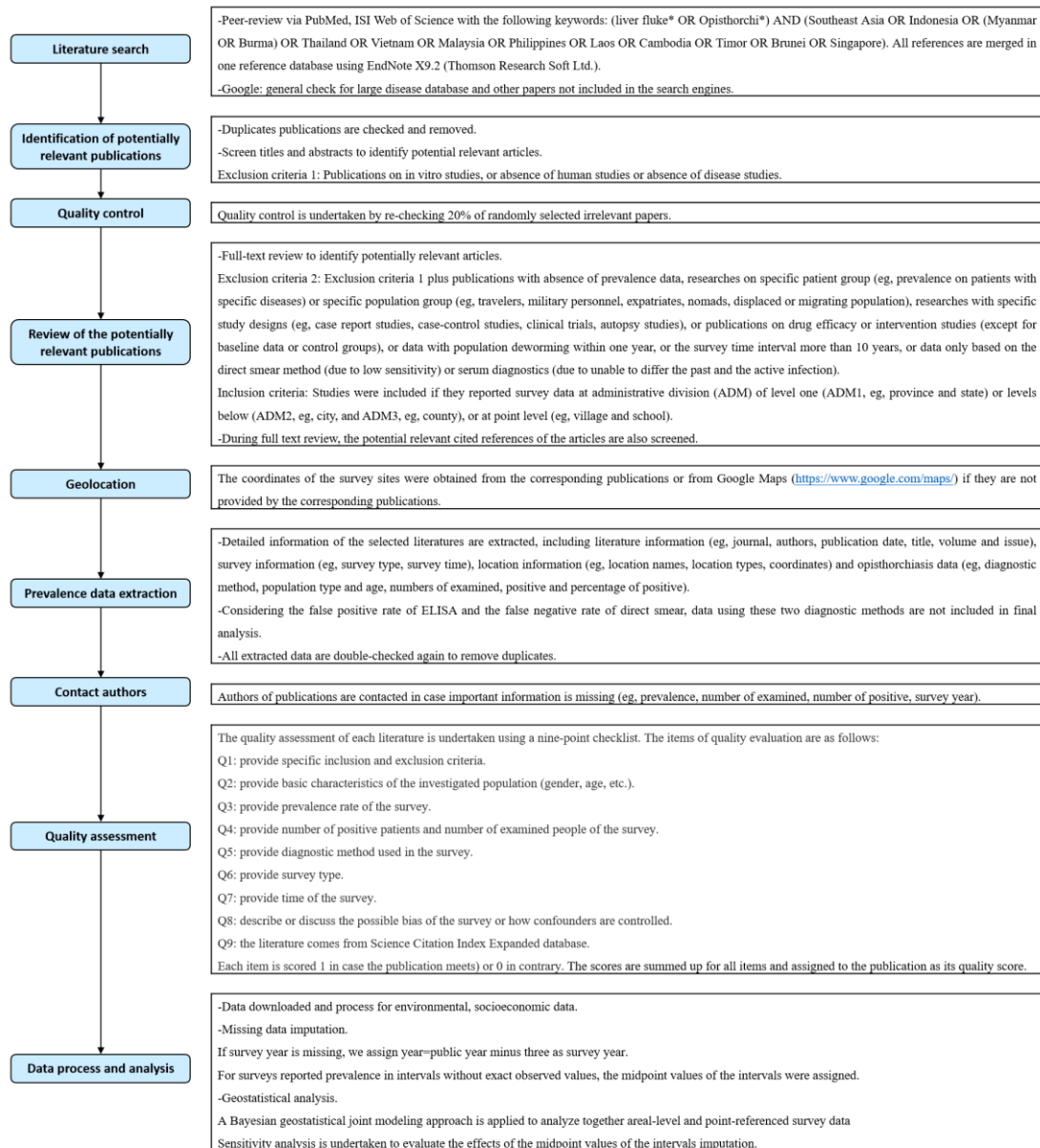


755

756 **Figure 7. Images of spatial covariates used in the present study.** (Source Data: Figure 7-source data

757 1)

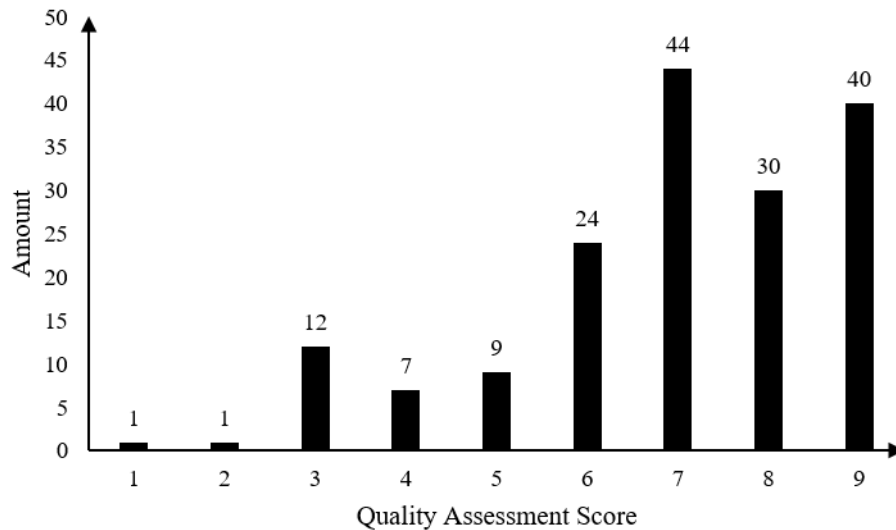
758 **List of figure supplements for primary figures**



759

760 **Figure 1-figure supplement 1. Study protocol.**

761

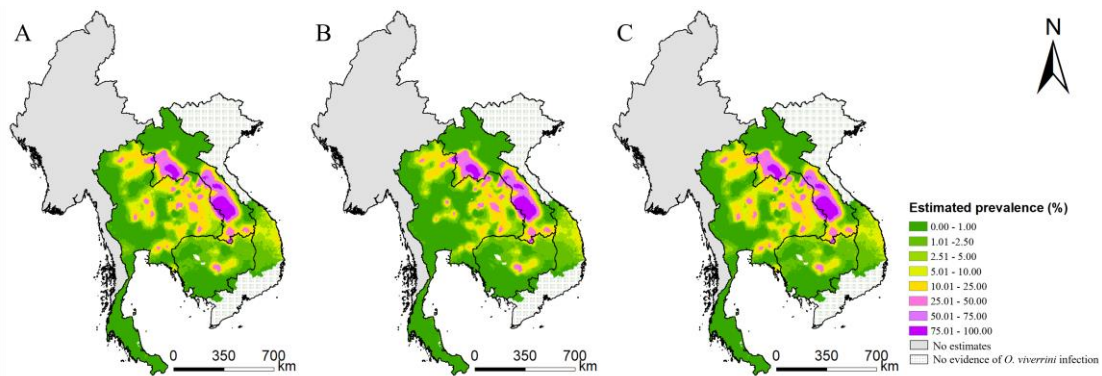


762

763 **Figure 2-figure supplement 1. Result of quality assessment of eligible studies.** (Source Data: Figure

764 2-figure supplement 1-source data 1)

765



766

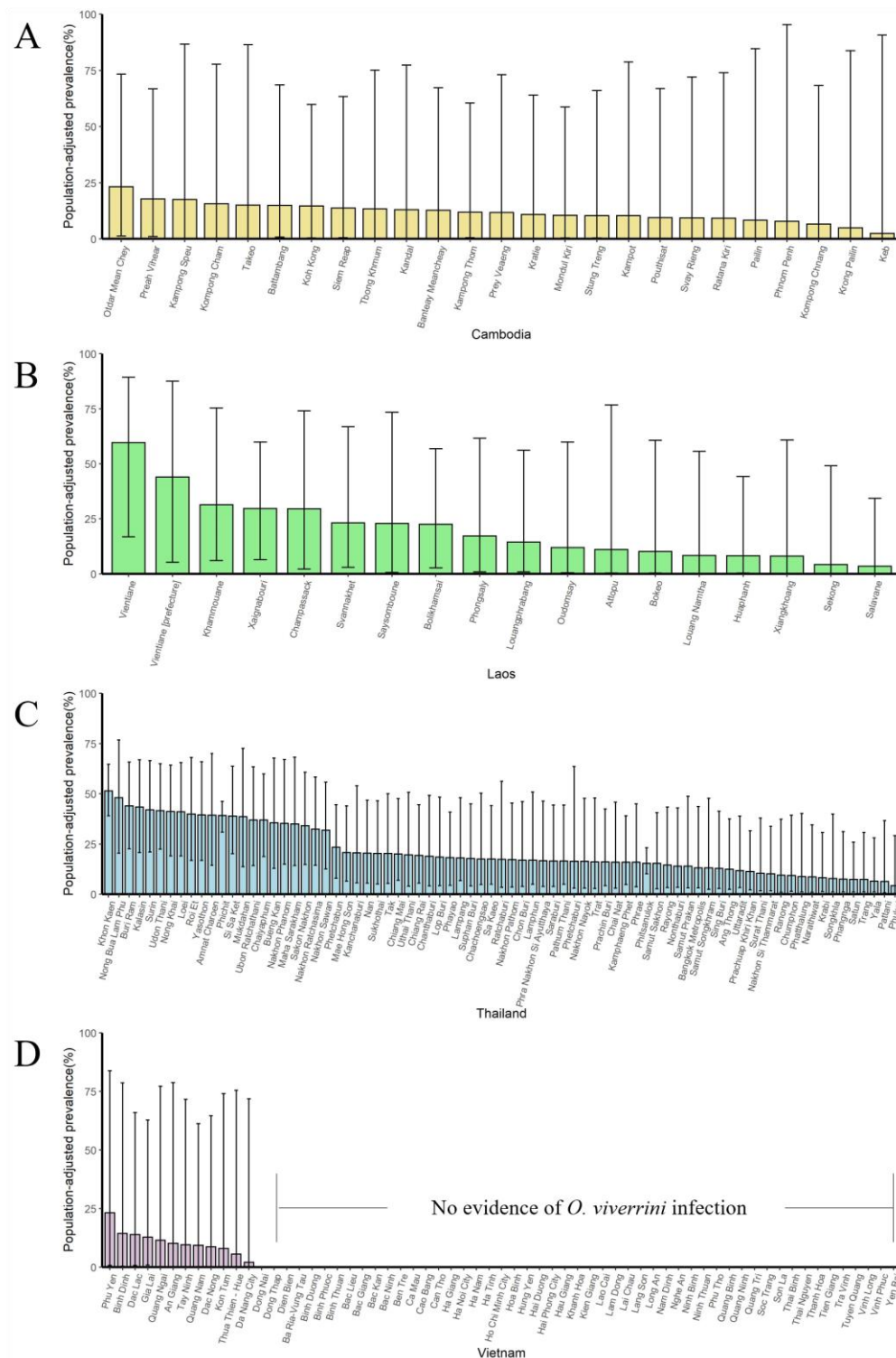
767 **Figure 3-figure supplement 1. Model-based estimated risk maps of *O. viverrini* infection in 2018**

768 **under different values assigned to prevalence for surveys only reported prevalence in intervals. (A)**

769 **the midpoint values of the intervals, (B) the lower limits and (C) the upper limits of the intervals were**

770 **assigned to prevalence. (Source Data: Figure 3-figure supplement 1-source data 1)**

771



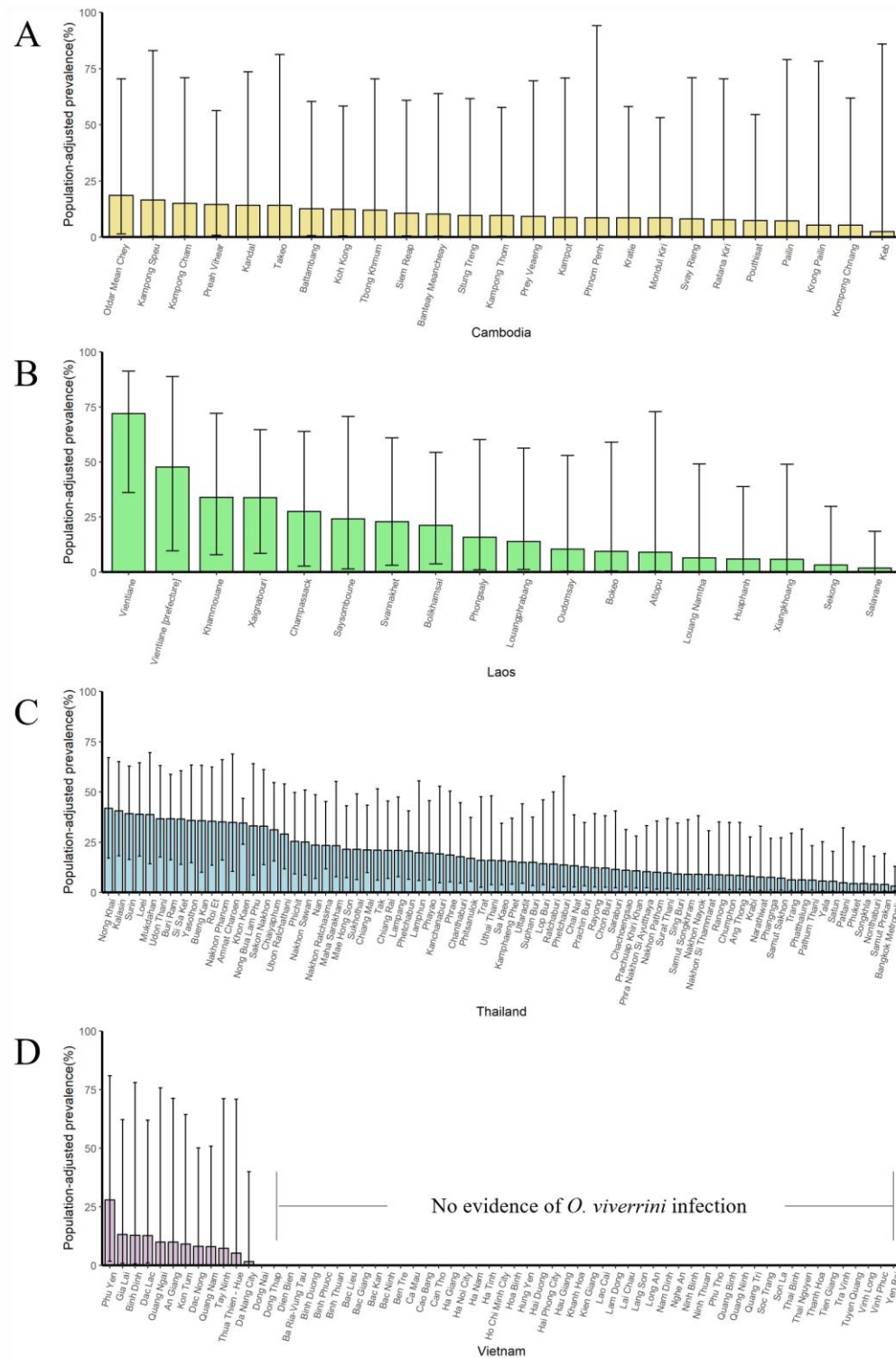
772

773 **Figure 6-figure supplement 1. The population-adjusted estimated prevalence (median  $\pm$  95% BCI)**

774 **in 2018 in four countries at administrative division of level one. (A) Cambodia, (B) Laos, (C) Thailand,**

775 **(D) Vietnam. (Source Data: Figure 6-figure supplement 1-source data 1)**

776



777

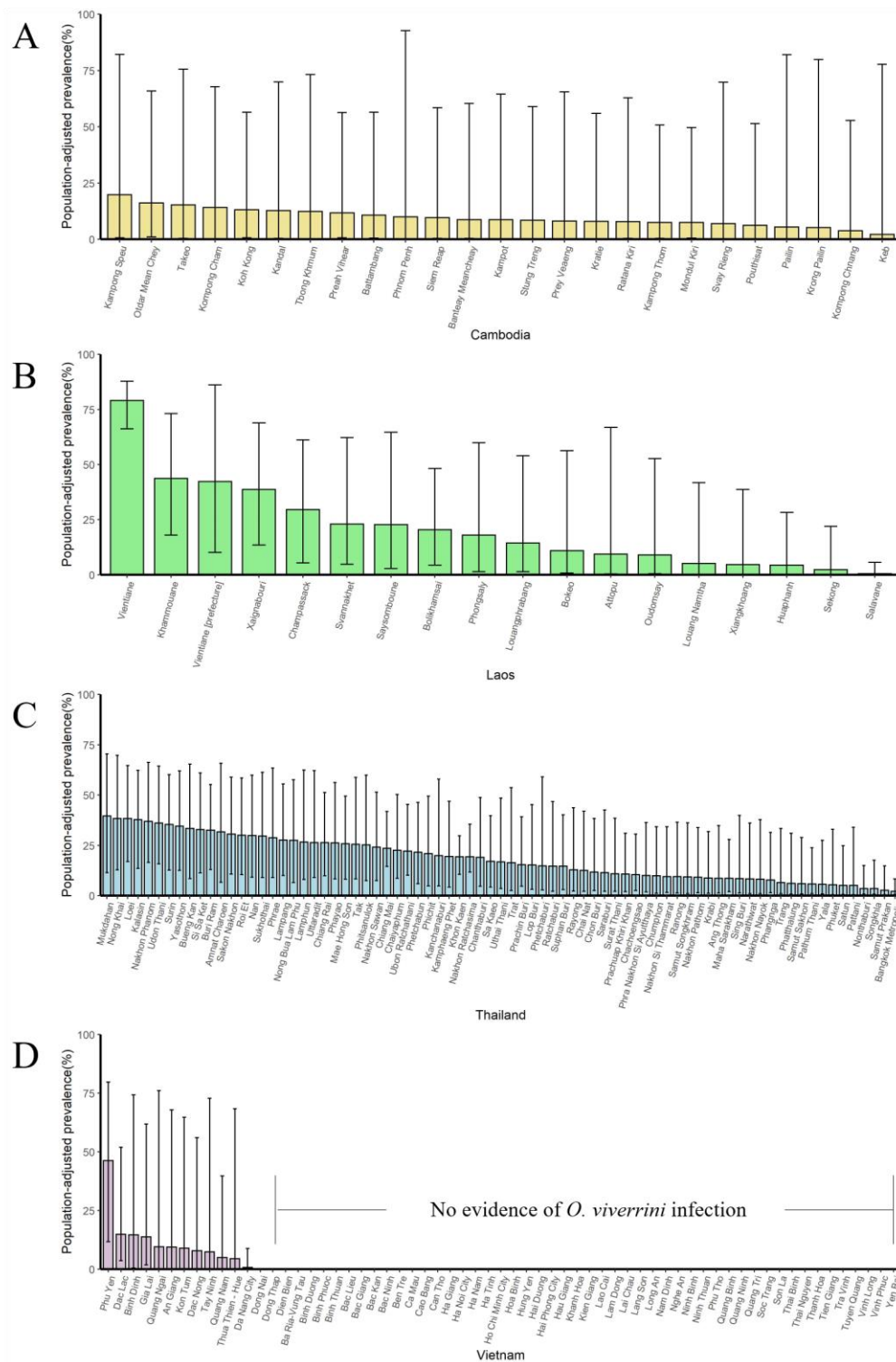
778 **Figure 6-figure supplement 2. The population-adjusted estimated prevalence (median  $\pm$  95% BCI)**

779 **in 2013 in four countries at administrative division of level one. (A) Cambodia, (B) Laos, (C) Thailand,**

780 **(D) Vietnam. (Source Data: Figure 6-figure supplement 2-source data 1)**

781





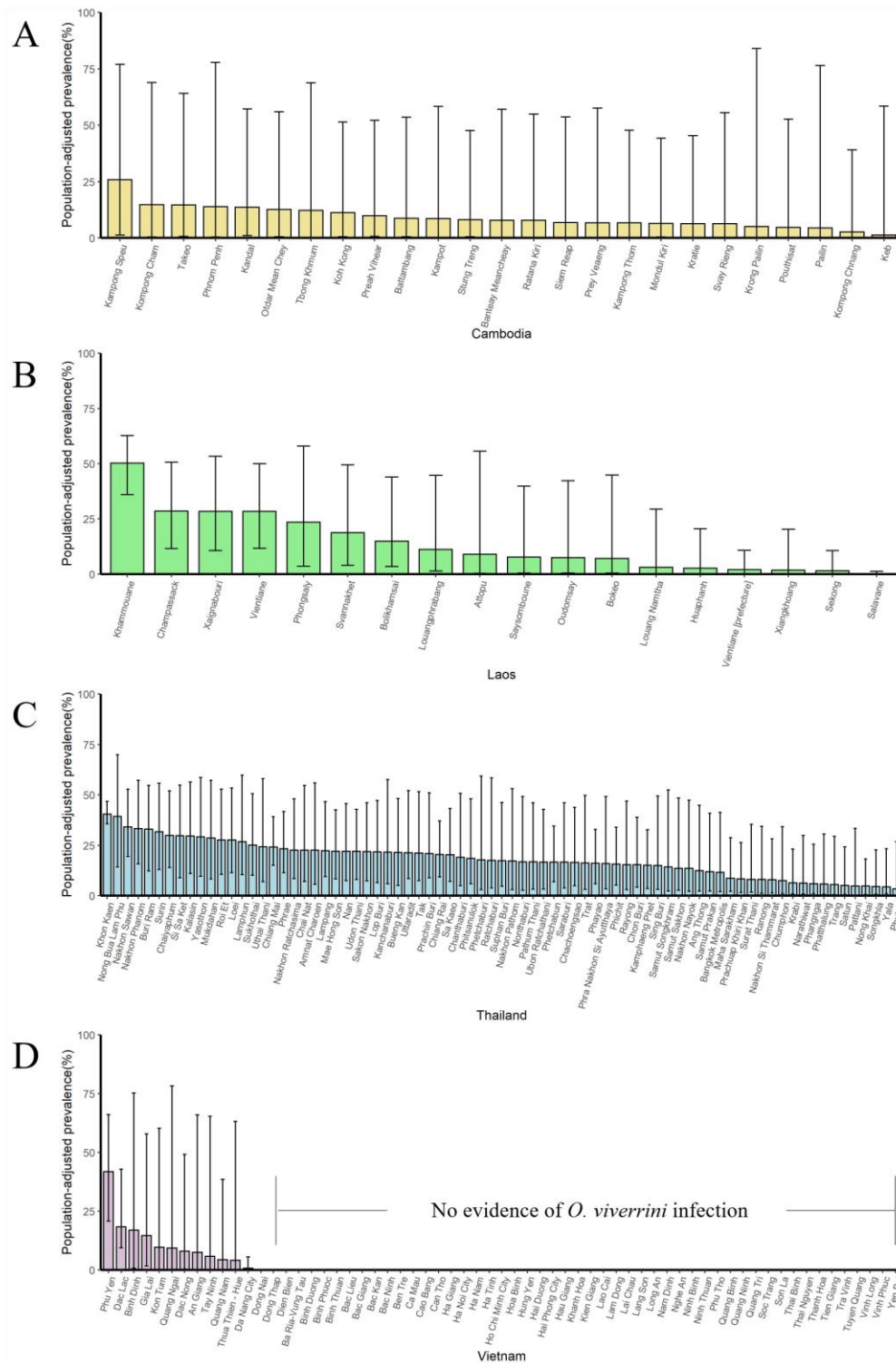
782

783 **Figure 6-figure supplement 3. The population-adjusted estimated prevalence (median  $\pm$  95% BCI)**

784 **in 2008 in four countries at administrative division of level one. (A) Cambodia, (B) Laos, (C) Thailand,**

785 **(D) Vietnam. (Source Data: Figure 6-figure supplement 3-source data 1)**

786



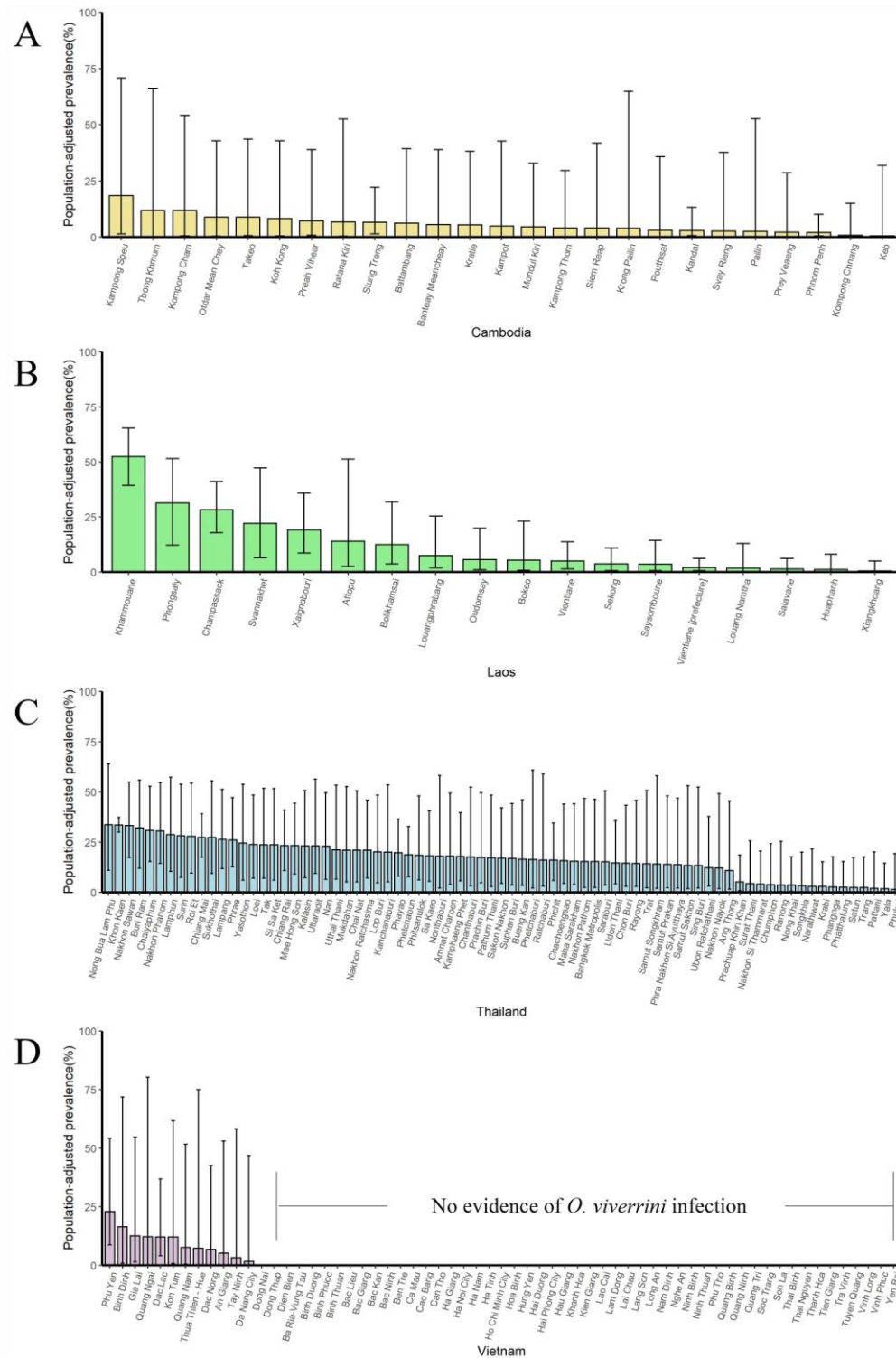
787

788 **Figure 6-figure supplement 4. The population-adjusted estimated prevalence (median  $\pm$  95% BCI)**

789 **in 2003 in four countries at administrative division of level one. (A) Cambodia, (B) Laos, (C) Thailand,**

790 **(D) Vietnam. (Source Data: Figure 6-figure supplement 4-source data 1)**

791



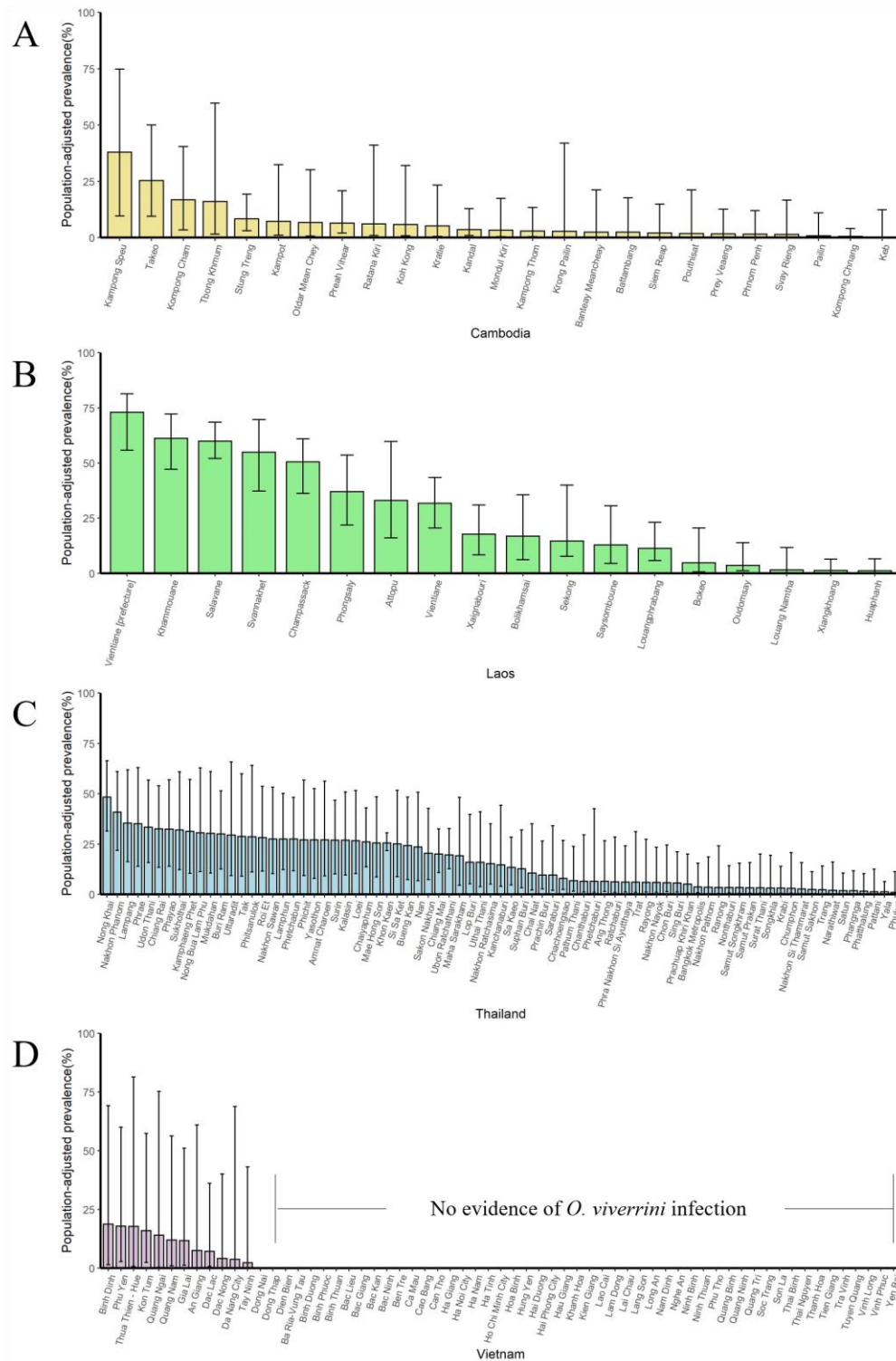
792

793 **Figure 6-figure supplement 5. The population-adjusted estimated prevalence (median  $\pm$ 95% BCI)**

794 **in 1998 in four countries at administrative division of level one. (A) Cambodia, (B) Laos, (C) Thailand,**

795 **(D) Vietnam. (Source Data: Figure 6-figure supplement 5-source data 1)**

796



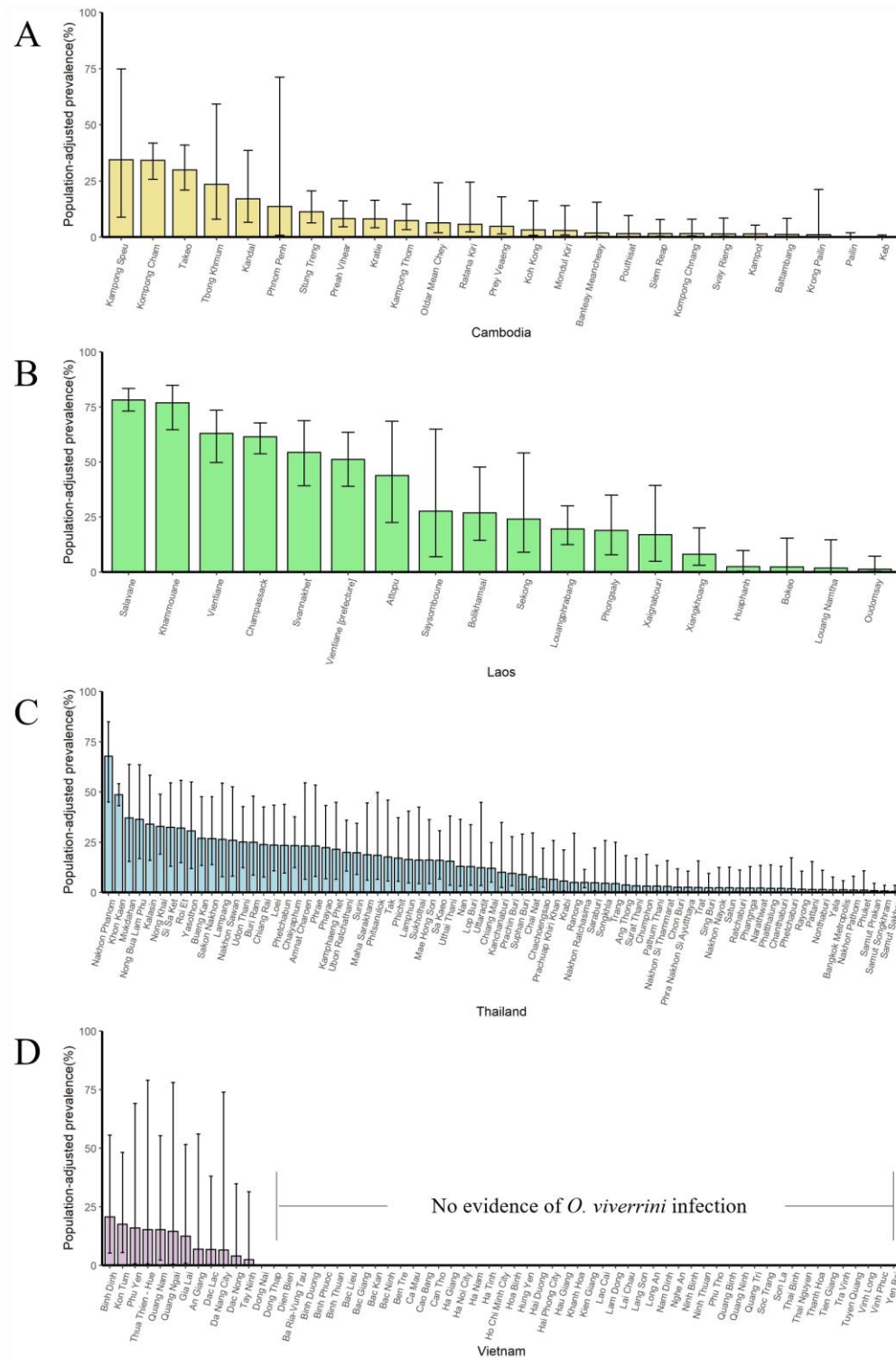
797

798 **Figure 6-figure supplement 6. The population-adjusted estimated prevalence (median  $\pm$  95% BCI)**

799 **in 1993 in four countries at administrative division of level one. (A) Cambodia, (B) Laos, (C) Thailand,**

800 **(D) Vietnam. (Source Data: Figure 6-figure supplement 4-source data 1)**

801



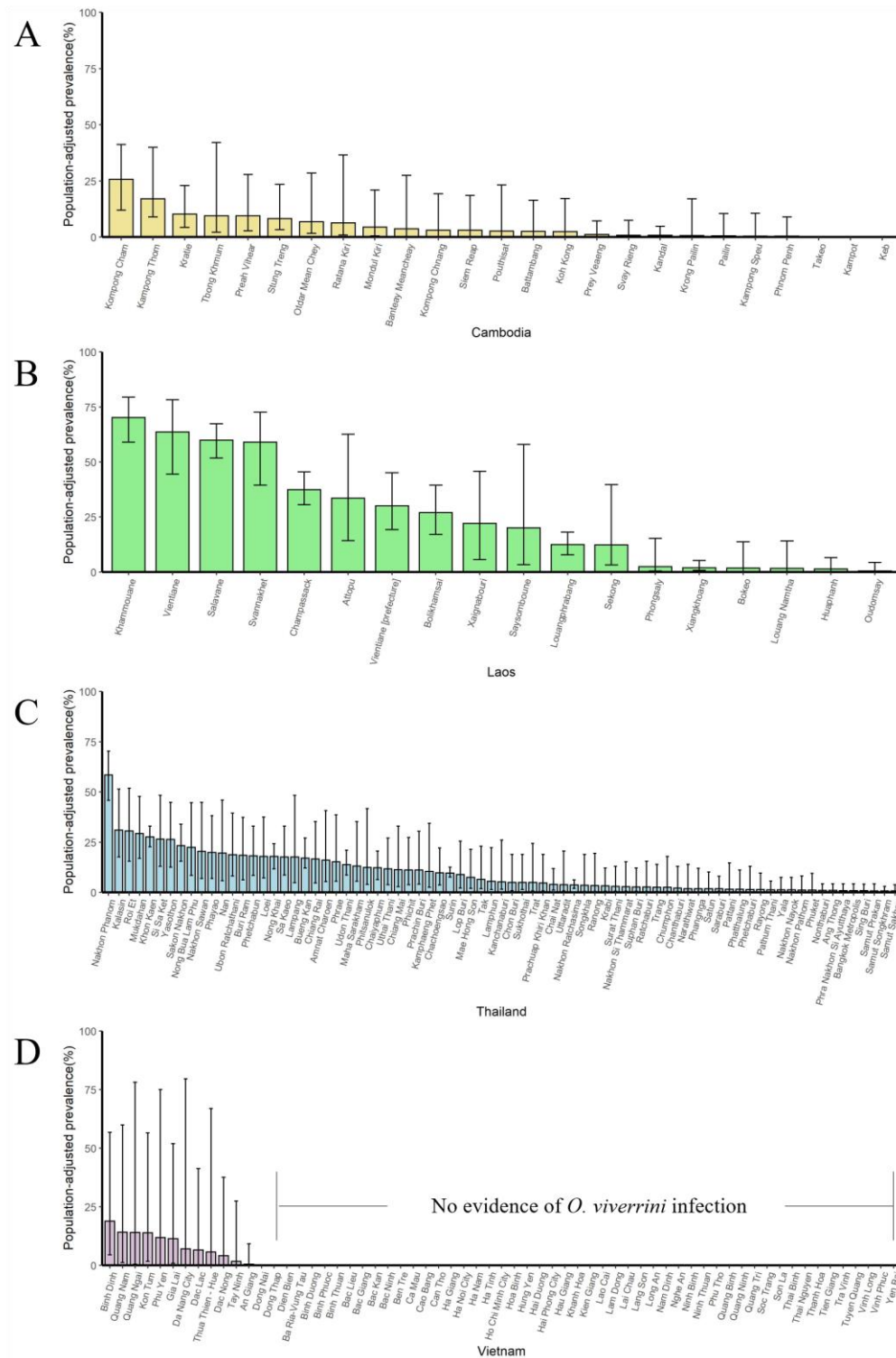
802

803 **Figure 6-figure supplement 7. The population-adjusted estimated prevalence (median  $\pm$ 95% BCI)**

804 **in 1988 in four countries at administrative division of level one. (A) Cambodia, (B) Laos, (C) Thailand,**

805 **(D) Vietnam. (Source Data: Figure 6-figure supplement 7-source data 1)**

806



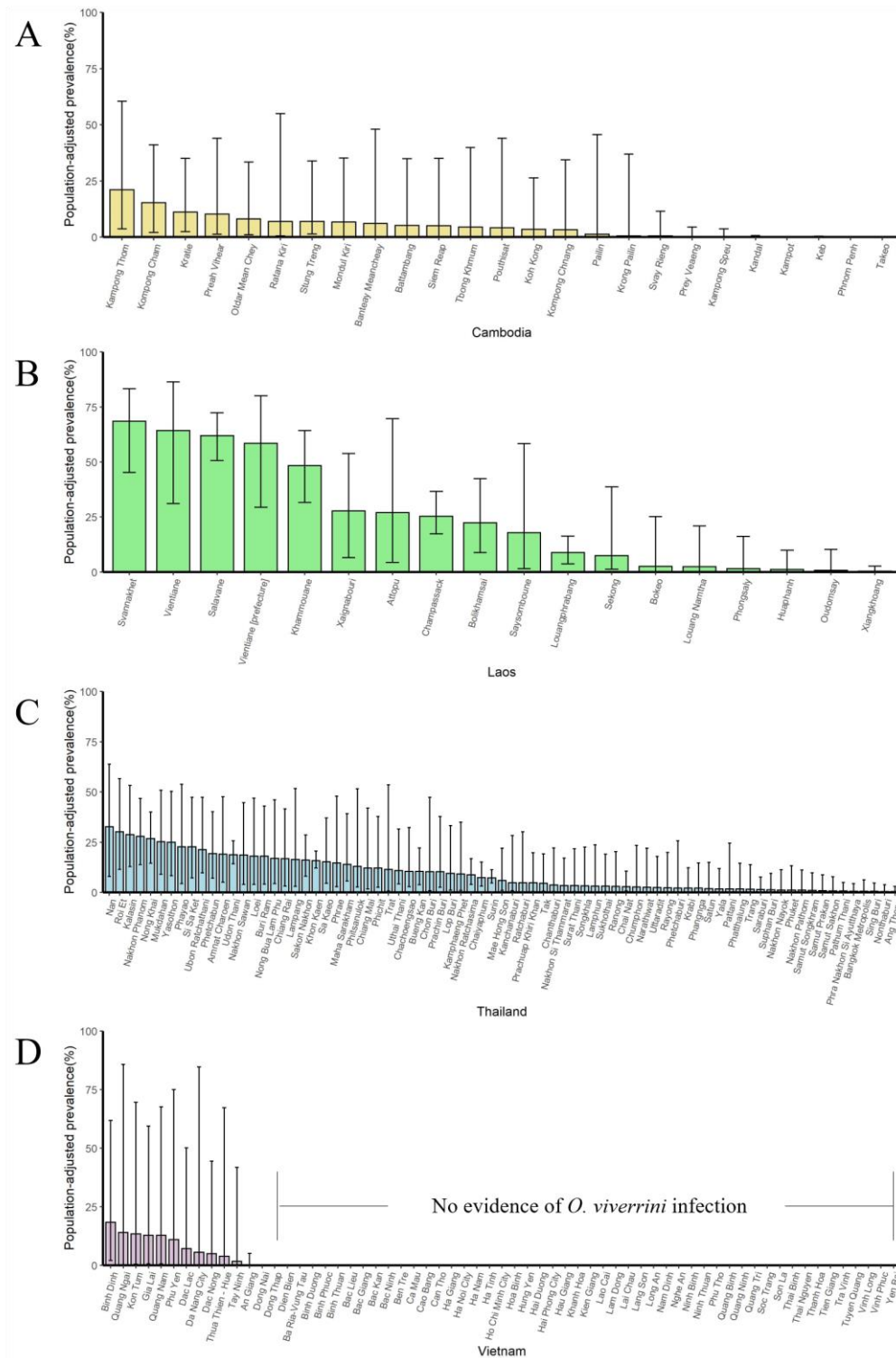
807

808 **Figure 6-figure supplement 8. The population-adjusted estimated prevalence (median  $\pm$ 95% BCI)**

809 **in 1983 in four countries at administrative division of level one. (A) Cambodia, (B) Laos, (C) Thailand,**

810 **(D) Vietnam. (Source Data: Figure 6-figure supplement 8-source data 1)**

811



812

813 **Figure 6-figure supplement 9. The population-adjusted estimated prevalence (median  $\pm$  95% BCI)**

814 **in 1978 in four countries at administrative division of level one. (A) Cambodia, (B) Laos, (C) Thailand,**

815 **(D) Vietnam. (Source Data: Figure 6-figure supplement 9-source data 1)**

816

817 **List of Source Data Files, for Figures**

818 Figure 2-source data 1

819 Figure 2-source data 2

820 Figure 3-source data 1

821 Figure 4-source data 1

822 Figure 5-source data 1

823 Figure 6-source data 1

824 Figure 7-source data 1

825 Figure 2-figure supplement 1-source data 1

826 Figure 3-figure supplement 1-source data 1

827 Figure 6-figure supplement 1-source data 1

828 Figure 6-figure supplement 2-source data 1

829 Figure 6-figure supplement 3-source data 1

830 Figure 6-figure supplement 4-source data 1

831 Figure 6-figure supplement 5-source data 1

832 Figure 6-figure supplement 6-source data 1

833 Figure 6-figure supplement 7-source data 1

834 Figure 6-figure supplement 8-source data 1

835 Figure 6-figure supplement 9-source data 1

836 The above source data files for figures can be available from the corresponding author: Dr Ying-Si Lai,

837 [laiys3@mail.sysu.edu.cn](mailto:laiys3@mail.sysu.edu.cn).

838



839 **List of Supplementary Files**

840 Supplementary File 1. PRISMA 2009 Checklist and GATHER checklist