

Supplementary Information

1. Fitting Plots for All States and Territories

Plots of state and territory fits below grouped by region of the United States as determined by the Census Bureau and ordered from north to south within each region.

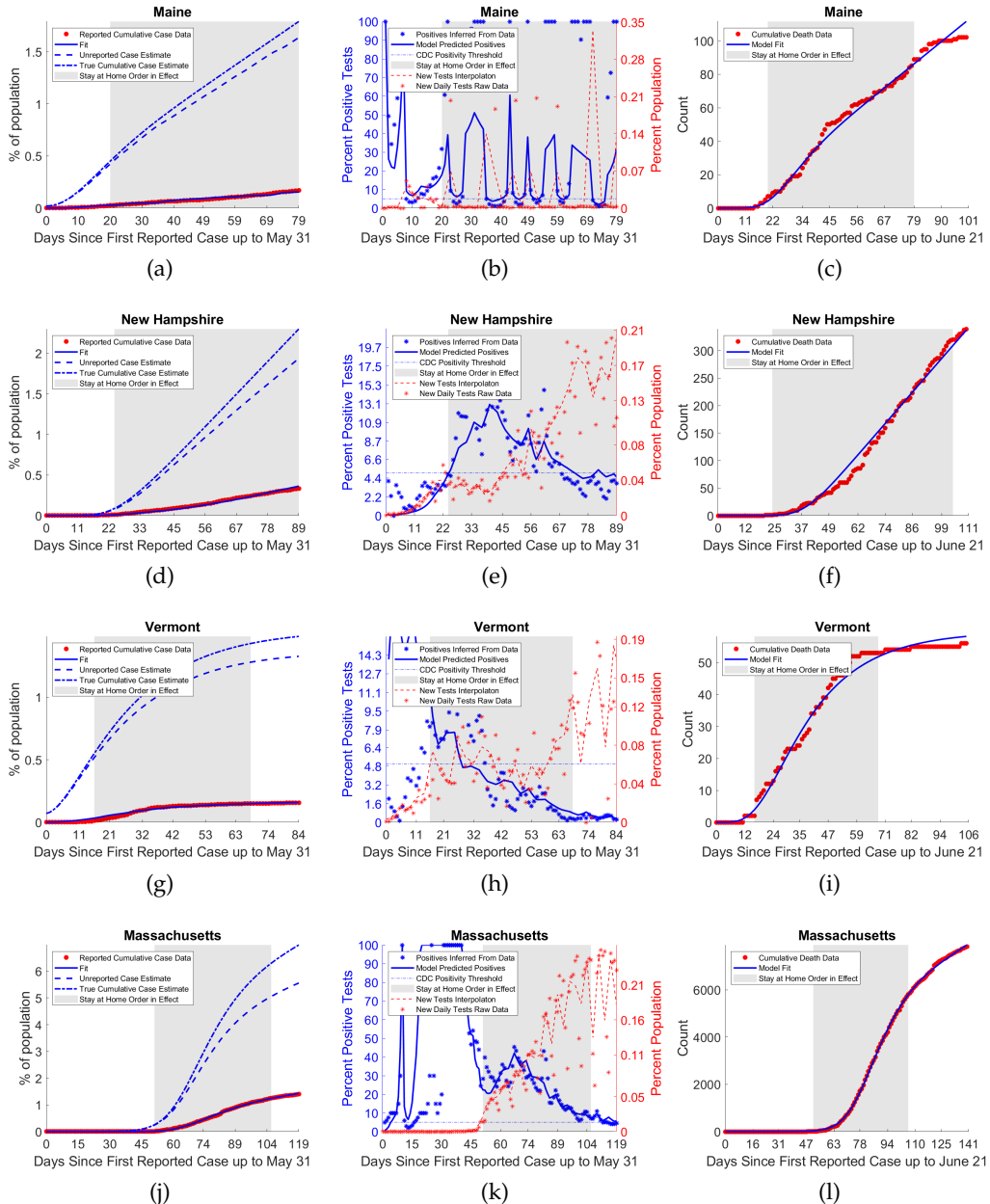


Figure S1: Fits for states in the Northeast. States and territories in this region include Maine, New Hampshire, Vermont, Massachusetts, Connecticut, Rhode Island, New Jersey, New York, and Pennsylvania. Figure 1 of 2. See also fig. S2

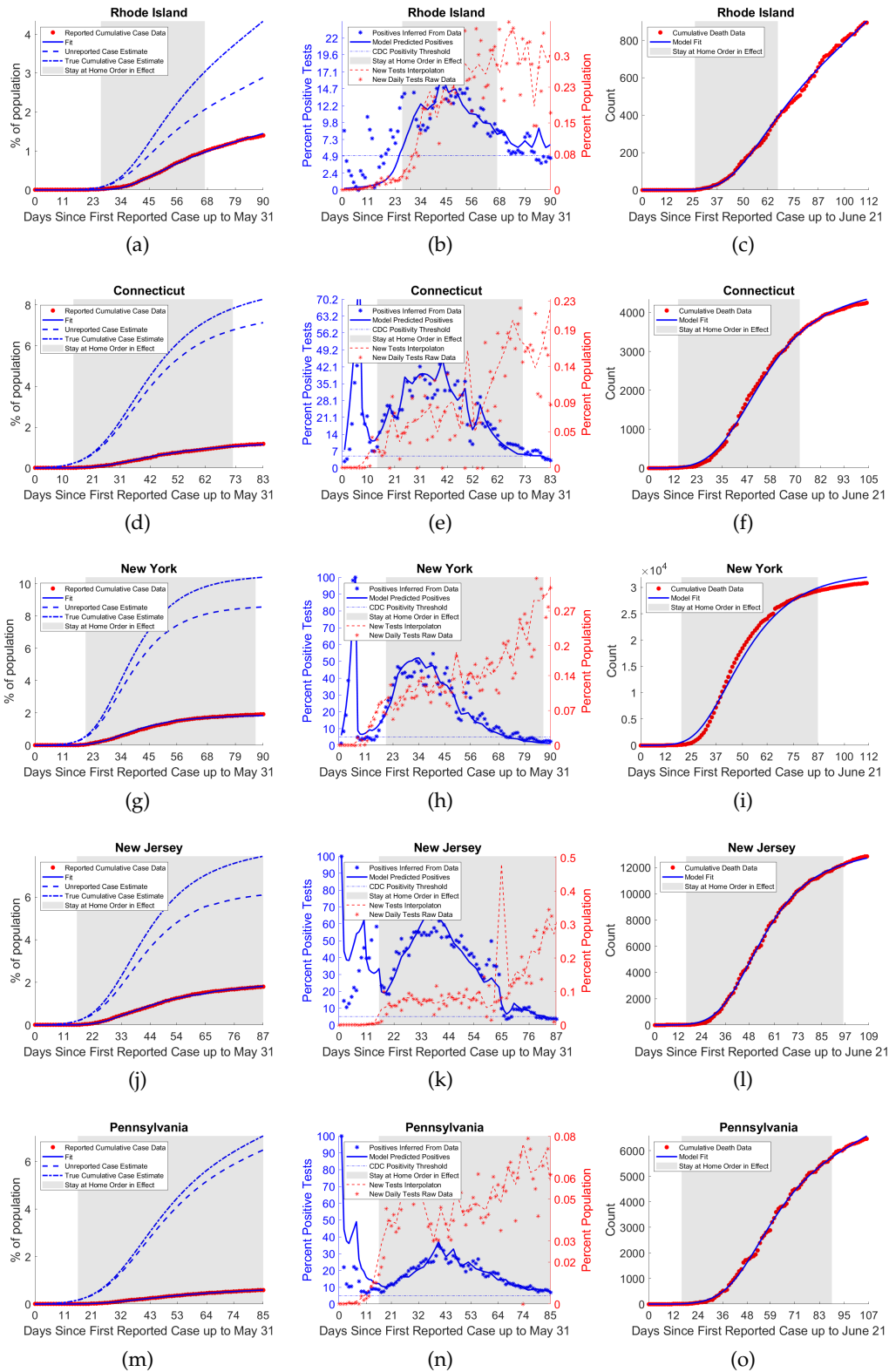


Figure S2: Fits for states in the Northeast. States and territories in this region include Maine, New Hampshire, Vermont, Massachusetts, Connecticut, Rhode Island, New Jersey, New York, and Pennsylvania. Figure 2 of 2. See also fig. S1.

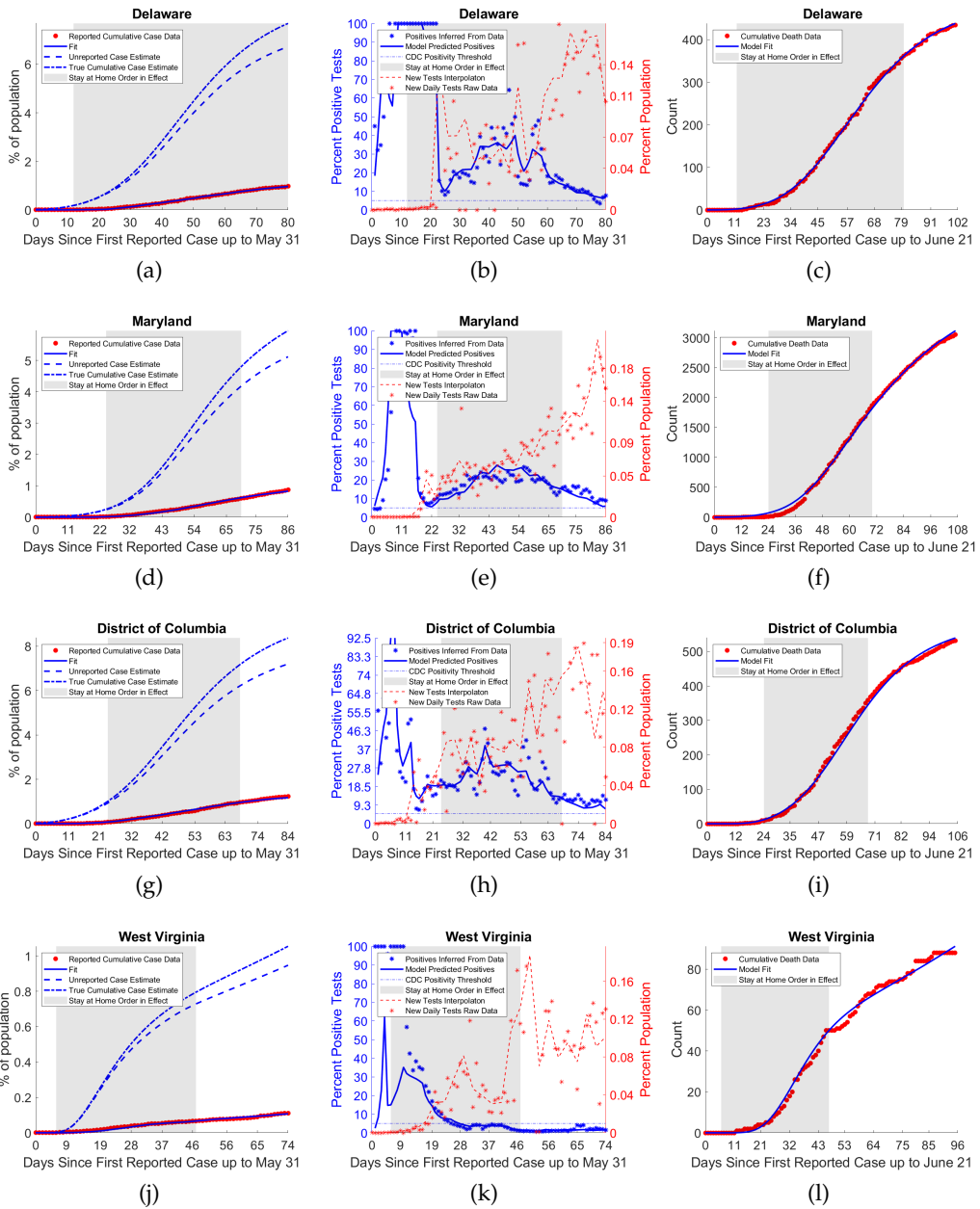


Figure S3: Fits for states and territories in the South Atlantic. States and territories in this region include Maryland, Delaware, West Virginia, Virginia, Georgia, North Carolina, South Carolina, Florida, the District of Columbia, the US Virgin Islands, and Puerto Rico. Figure 1 of 3. See also figs. [S4](#), [S5](#)

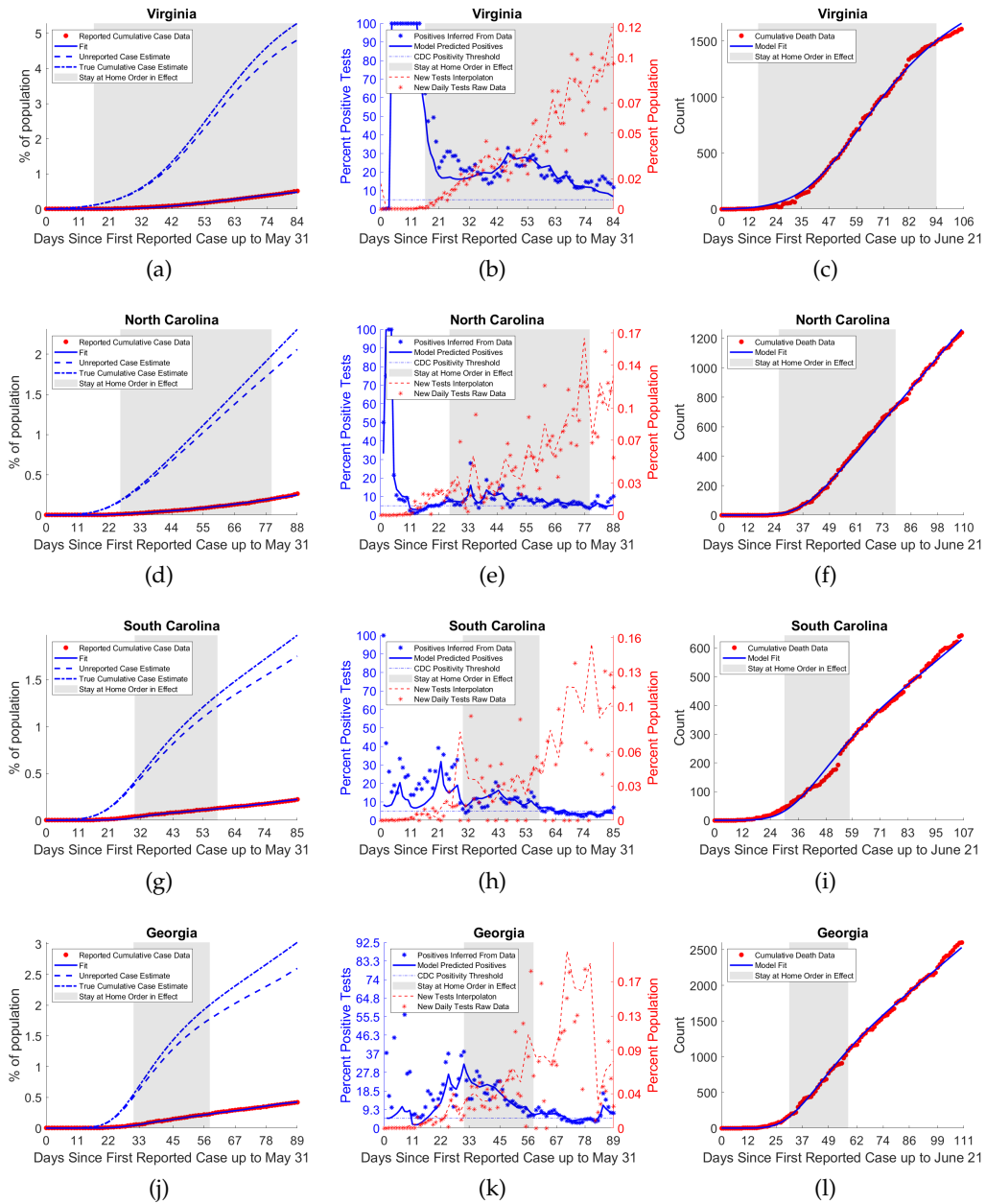


Figure S4: Fits for states and territories in the South Atlantic. States and territories in this region include Maryland, Delaware, West Virginia, Virginia, Georgia, North Carolina, South Carolina, Florida, the District of Columbia, the US Virgin Islands, and Puerto Rico. Figure 2 of 3. See also figs. [S3](#), [S5](#)

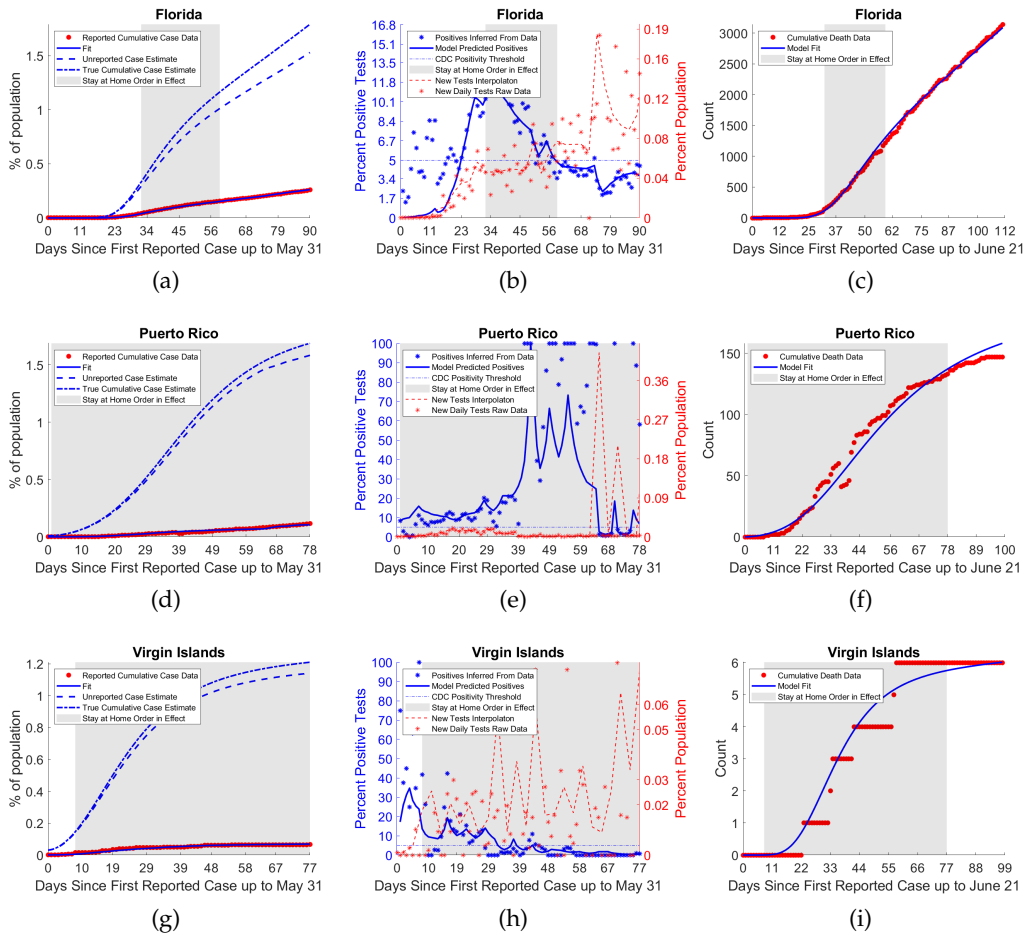


Figure S5: Fits for states and territories in the South Atlantic. States and territories in this region include Maryland, Delaware, West Virginia, Virginia, Georgia, North Carolina, South Carolina, Florida, the District of Columbia, the US Virgin Islands, and Puerto Rico. Figure 3 of 3. See also figs. [S3](#), [S4](#)

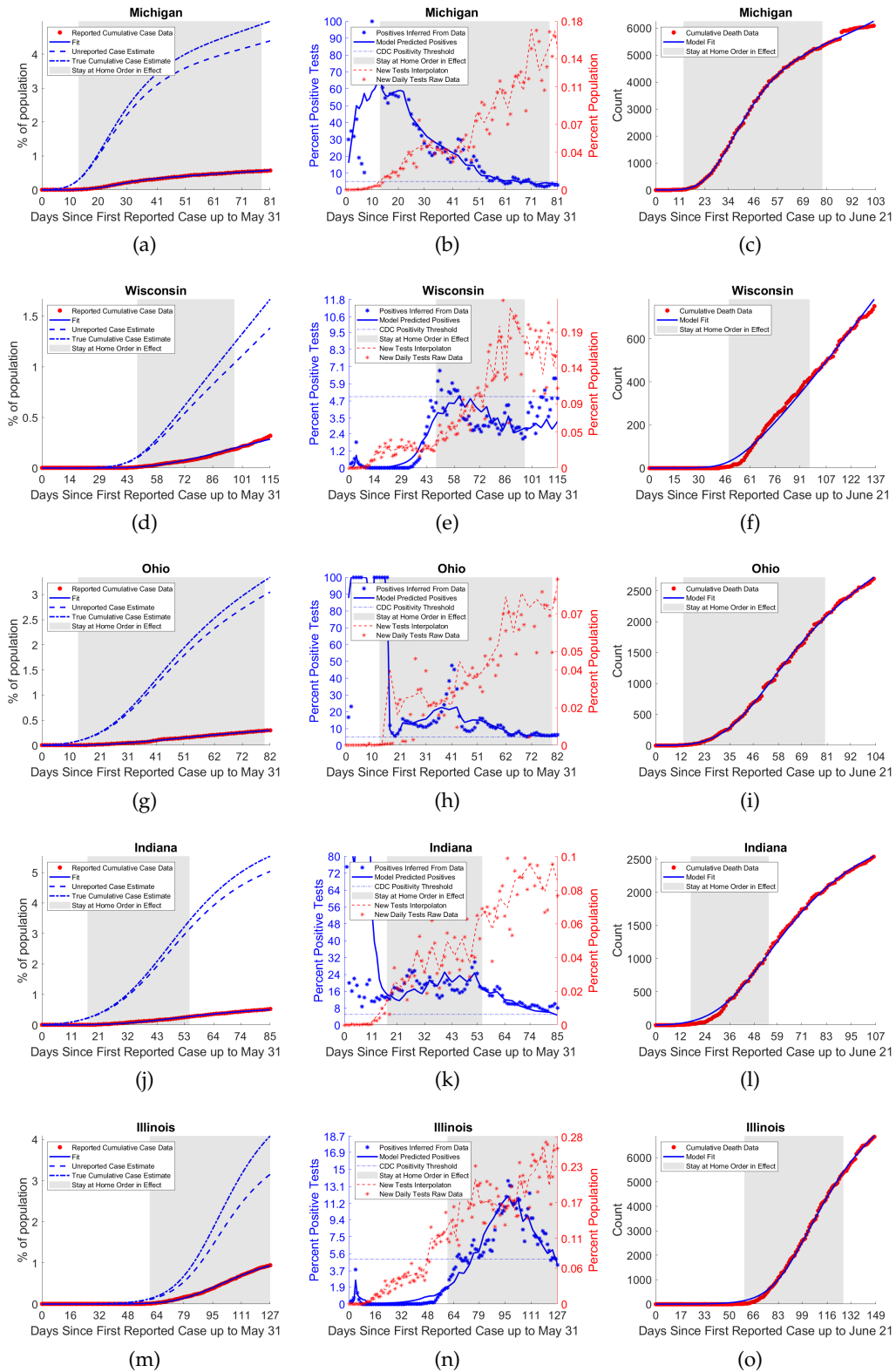


Figure S6: Fits for states and territories in the Midwest. States and territories in this region include Michigan, Wisconsin, Ohio, Indiana, Illinois, Minnesota, North Dakota, South Dakota, Iowa, Nebraska, Kansas, and Missouri. Figure 1 of 3. See also figs. [S12,S8](#)

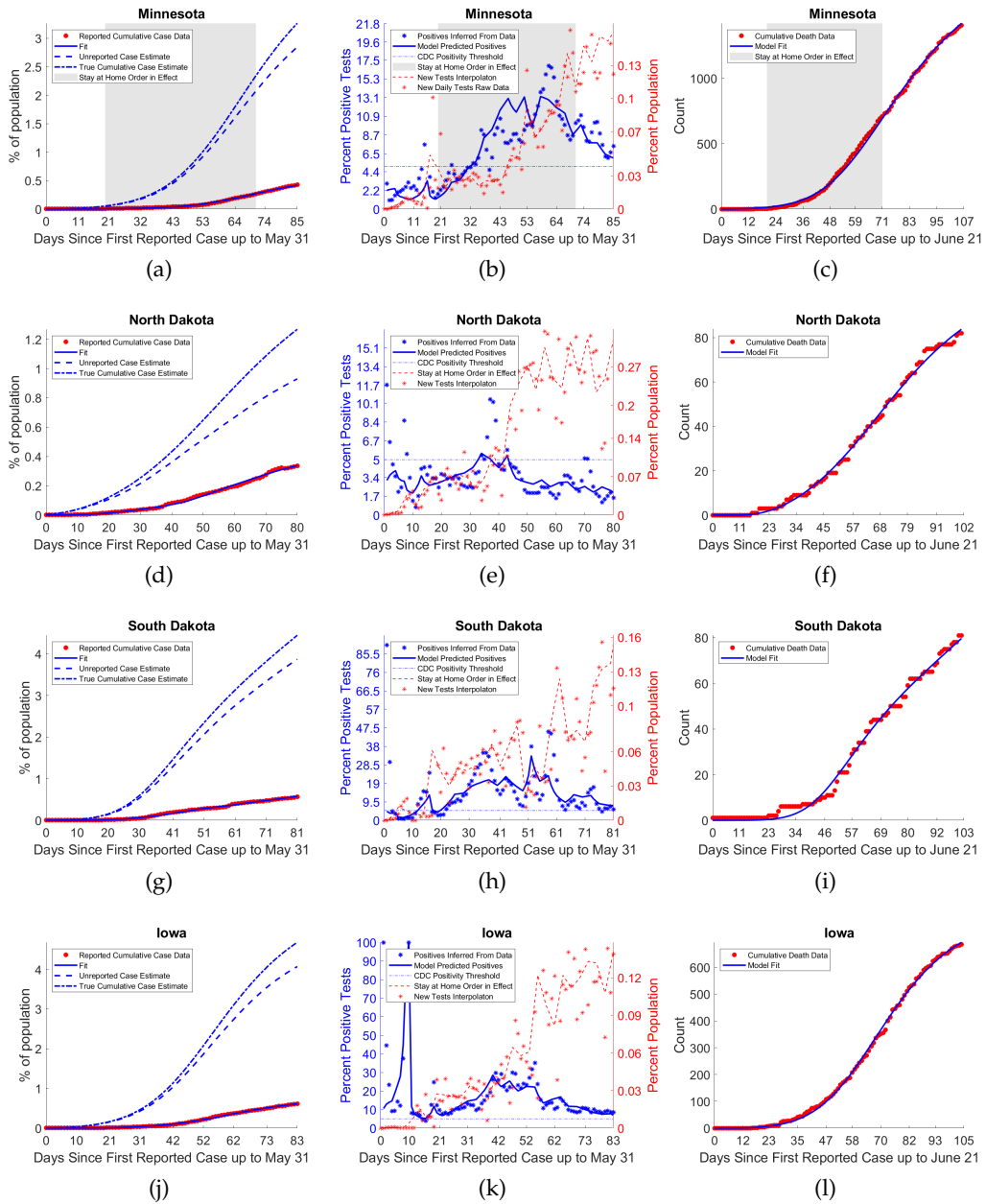


Figure S7: Fits for states and territories in the Midwest. States and territories in this region include Michigan, Wisconsin, Ohio, Indiana, Illinois, Minnesota, North Dakota, South Dakota, Iowa, Nebraska, Kansas, and Missouri. Figure 2 of 3. See also figures [S11](#), [S8](#)

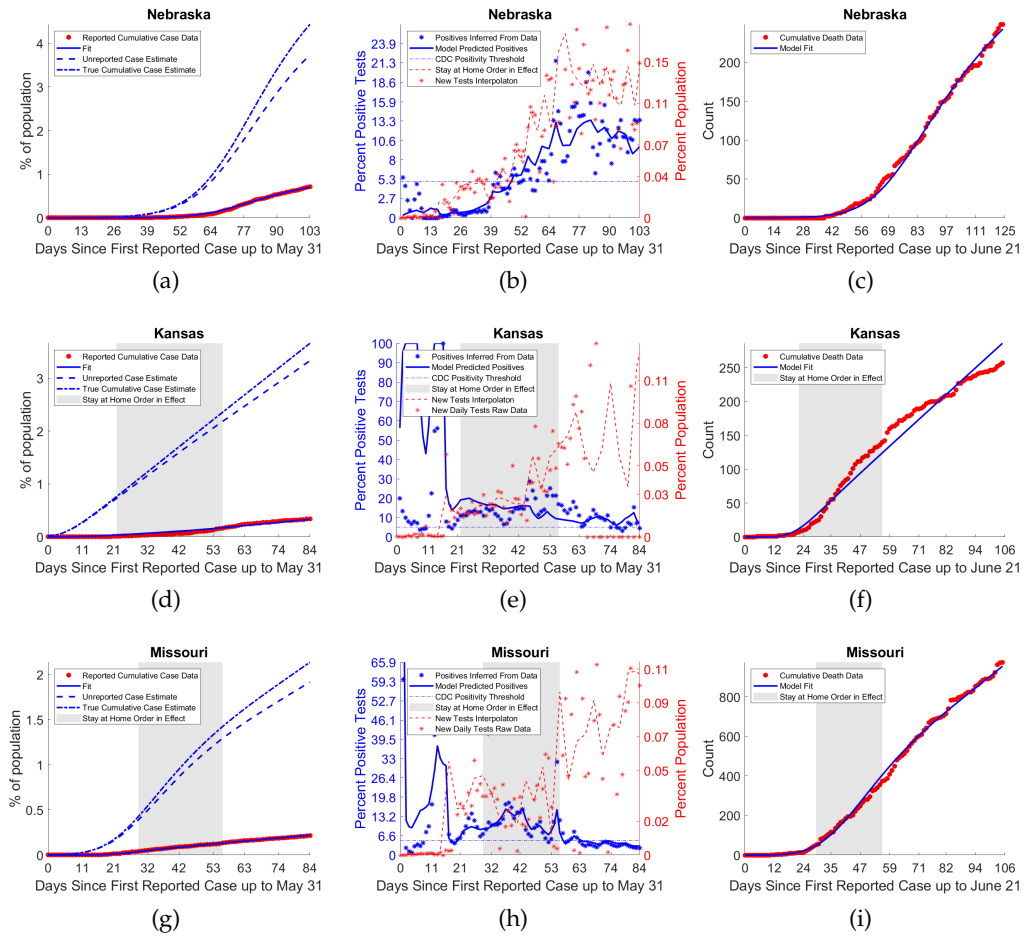


Figure S8: Fits for states and territories in the Midwest. States and territories in this region include Michigan, Wisconsin, Ohio, Indiana, Illinois, Minnesota, North Dakota, South Dakota, Iowa, Nebraska, Kansas, and Missouri. Figure 3 of 3 See also figures [S11](#), [S12](#)

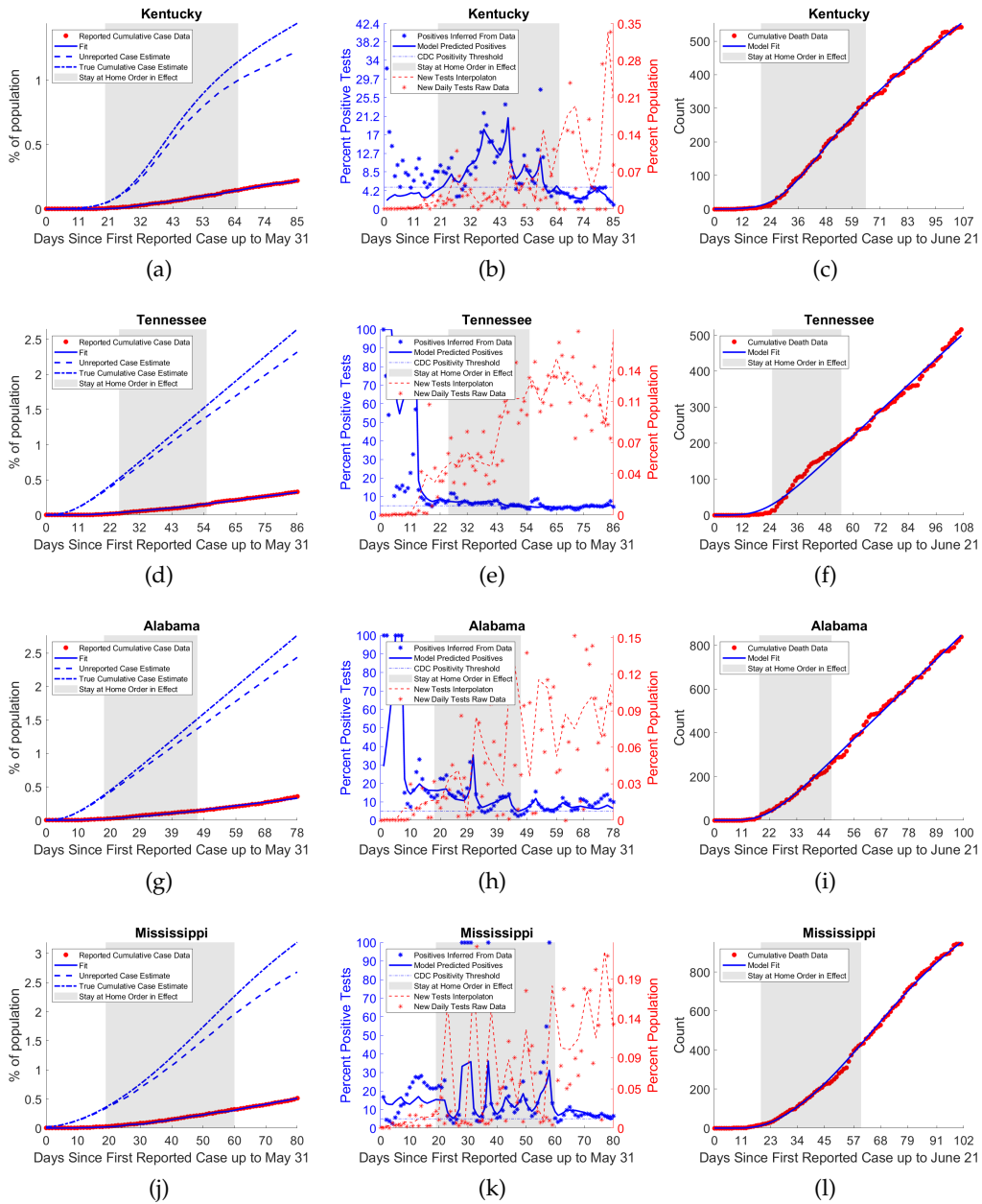


Figure S9: Fits for states and territories in the Central South. States and territories in this region include Kentucky, Tennessee, Alabama, Mississippi, Oklahoma, Arkansas, Texas, and Louisiana. Figure 1 of 2. See also figure S10

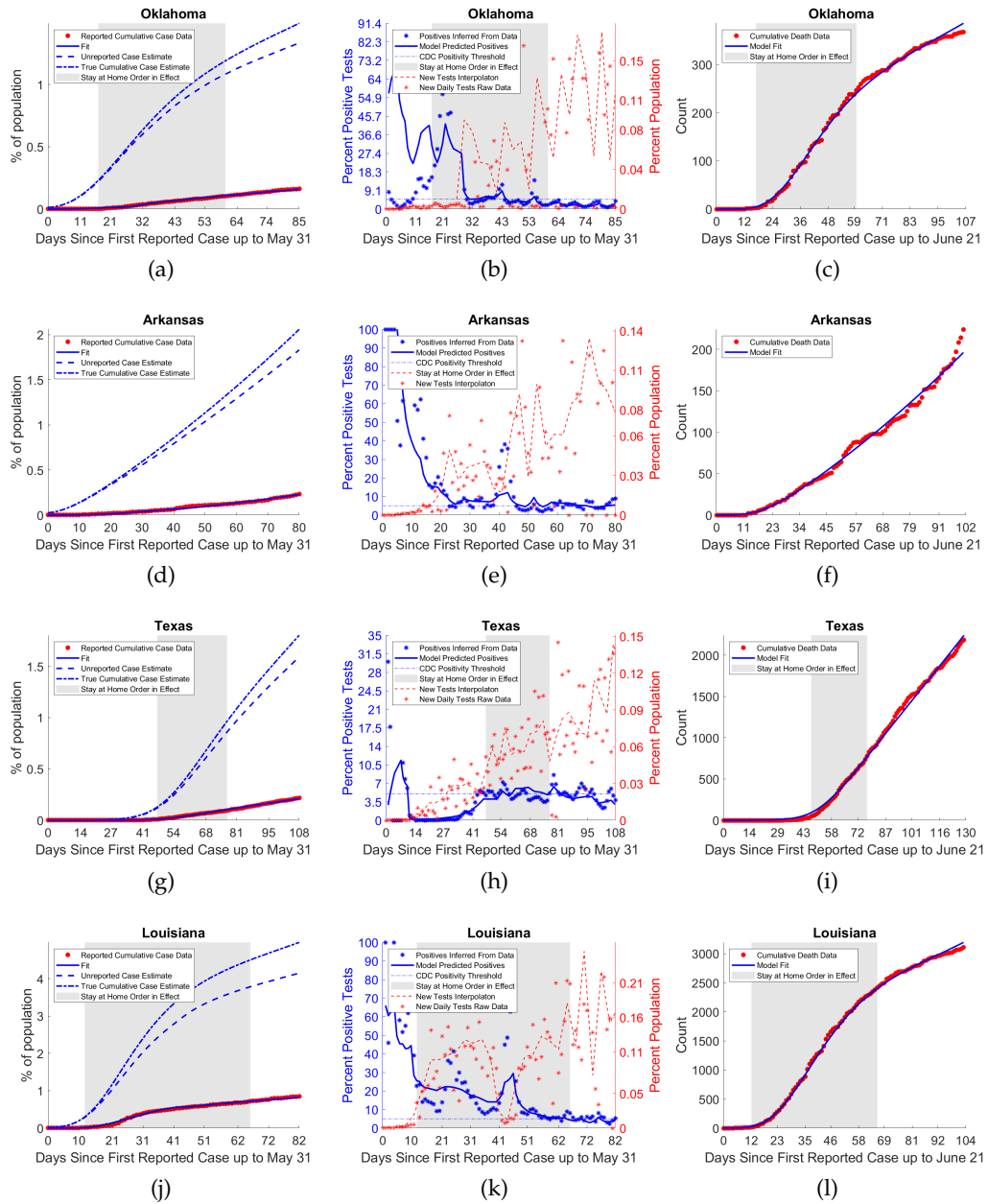


Figure S10: Fits for states and territories in the Central South. States and territories in this region include Kentucky, Tennessee, Alabama, Mississippi, Oklahoma, Arkansas, Texas, and Louisiana. Figure 2 of 2 See also figure S9

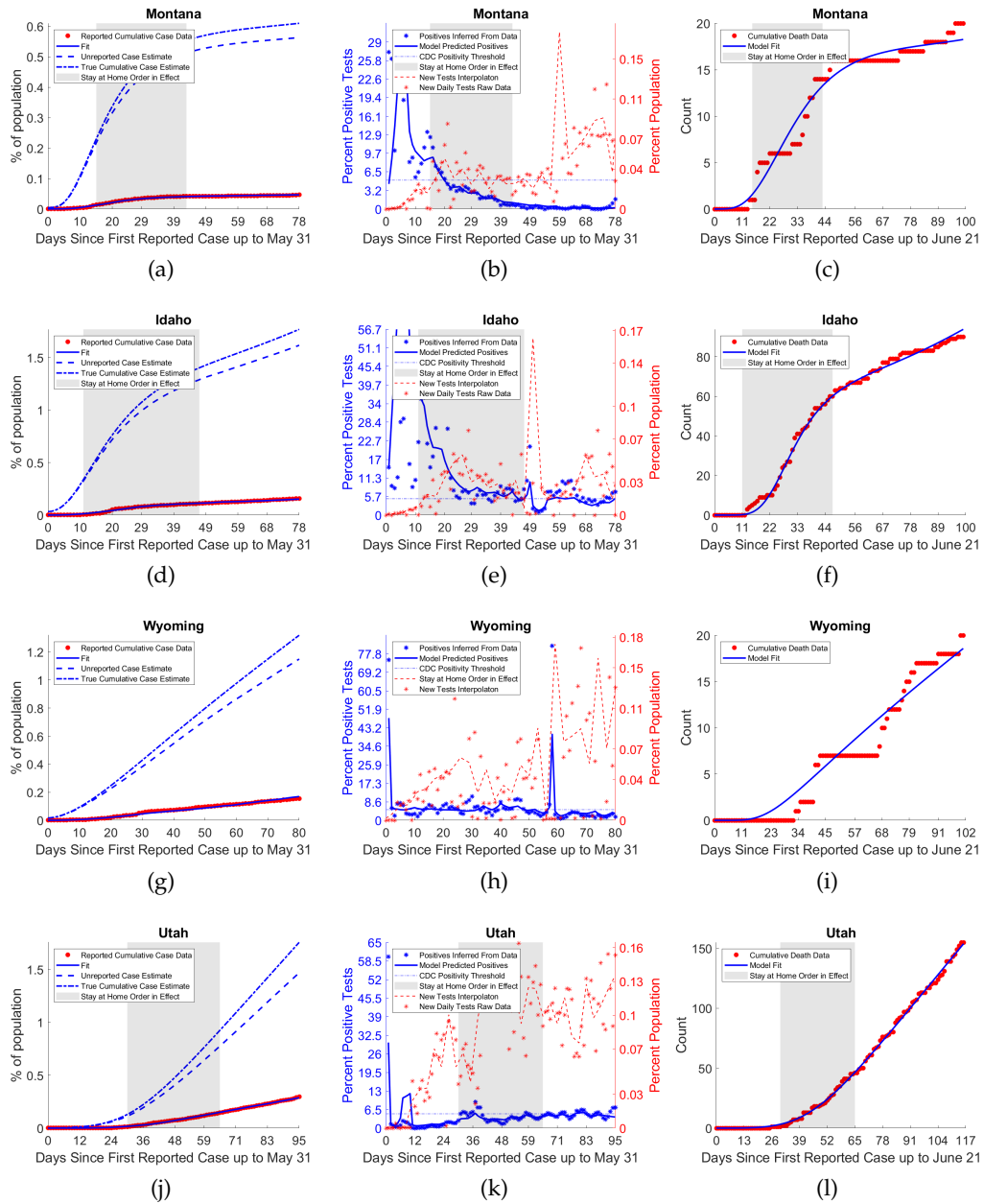


Figure S11: Fits for states and territories in the Mountain West. States and territories in this region include Montana, Idaho, Wyoming, Utah, Nevada, Arizona, New Mexico, and Colorado. Figure 1 of 2 See also figure S12

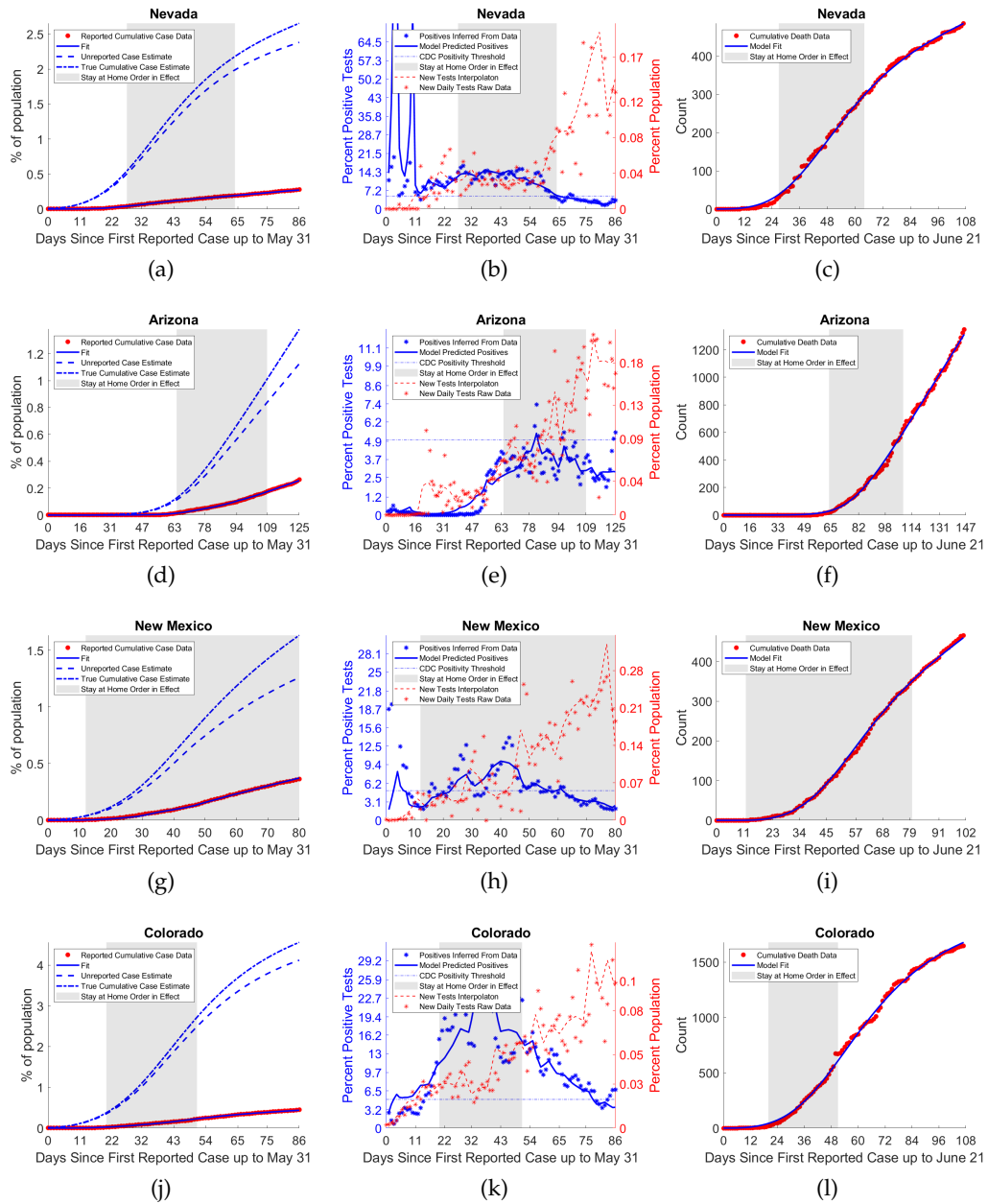


Figure S12: Fits for states and territories in the Mountain West. States and territories in this region include Montana, Idaho, Wyoming, Utah, Nevada, Arizona, New Mexico, and Colorado. Figure 2 of 2 See also figure S11

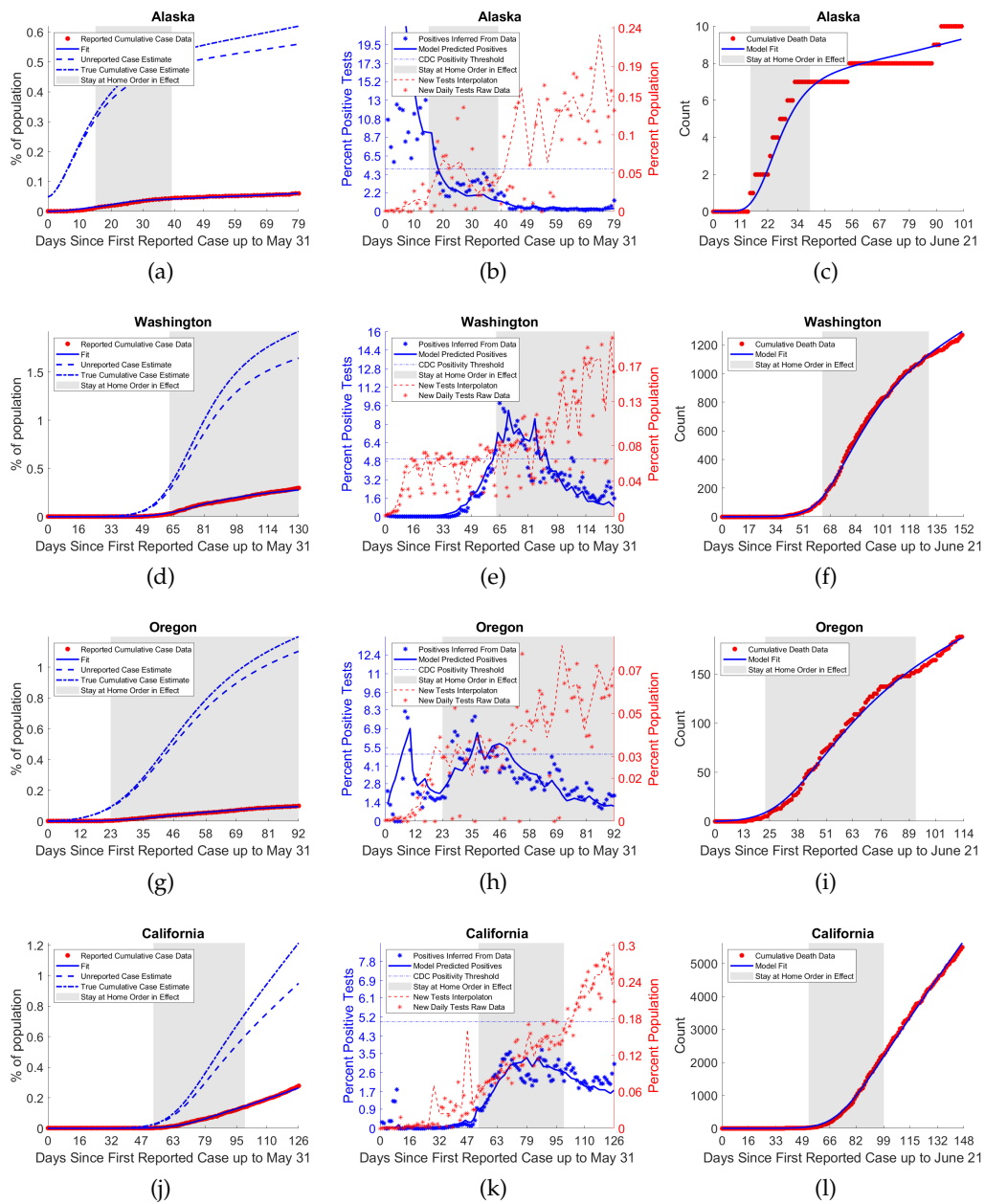


Figure S13: Fits for states and territories in the Pacific West. States and territories in this region include Alaska, Washington, Oregon, California, Hawaii, Guam, and the Northern Marianas Islands. Figure 1 of 2 See also figure S14

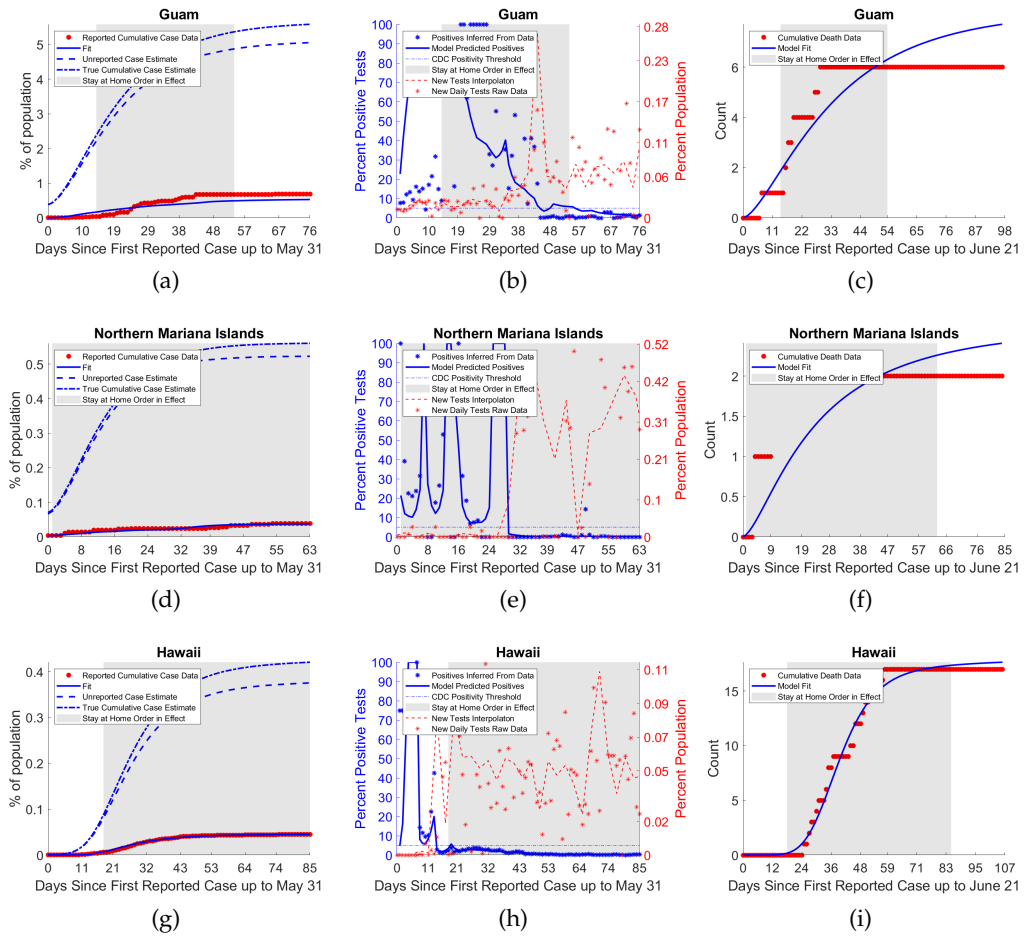


Figure S14: Fits for states and territories in the Pacific West. States and territories in this region include Alaska, Washington, Oregon, California, Hawaii, Guam, and the Northern Marianas Islands. Figure 2 of 2. See also figure S13

2. Model Robustness

In order to test the robustness of parameter results, particularly those of IFR, ratio of True to Reported Cases, positivity, and rho, we considered two alternative scenarios. First, we fixed the IFR, model parameter, $\xi = 0.0086$, at the fit value for the United States as a whole, for all states and territories, while fitting the other model parameters as reported in the main text. Second we fixed A/N and k at the fit value for the United States and carried out the same process again (see table S2 for specific values).

As can be seen in both figures S15,S16 and table S1 both of these alternative fitting procedures produced significantly increased residual values, uniformly across states in the first case, with increasing effect as the fixed parameters in question differed more significantly from those provided in the main body of the text, with qualitatively most fittings experiencing significant decrease in visual quality of fit to the underlying data in the first alternative fitting, and badly so in a number of states in the second.

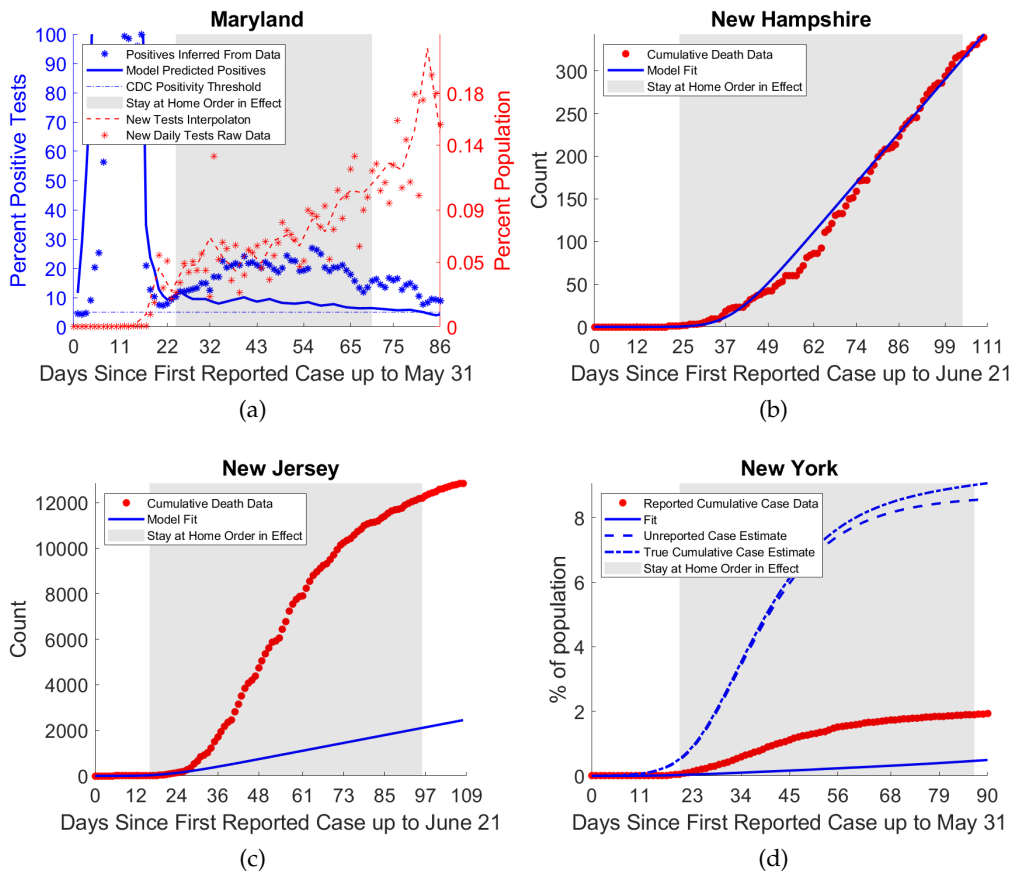


Figure S15: (a), (c), (d) are examples of the poor quality of fit for most states under alternative fitting procedure 1, with IFR fixed at 0.086. (b) shows that even for New Hampshire, which had the 3rd lowest increase in residual relative to baseline in this scenario, still has visibly worse fit for cumulative deaths compared to baseline.

Thus we conclude that our model is not over-identified, and that we need the flexibility of fitting both ρ and ξ in order to obtain good fits across all states and territories.

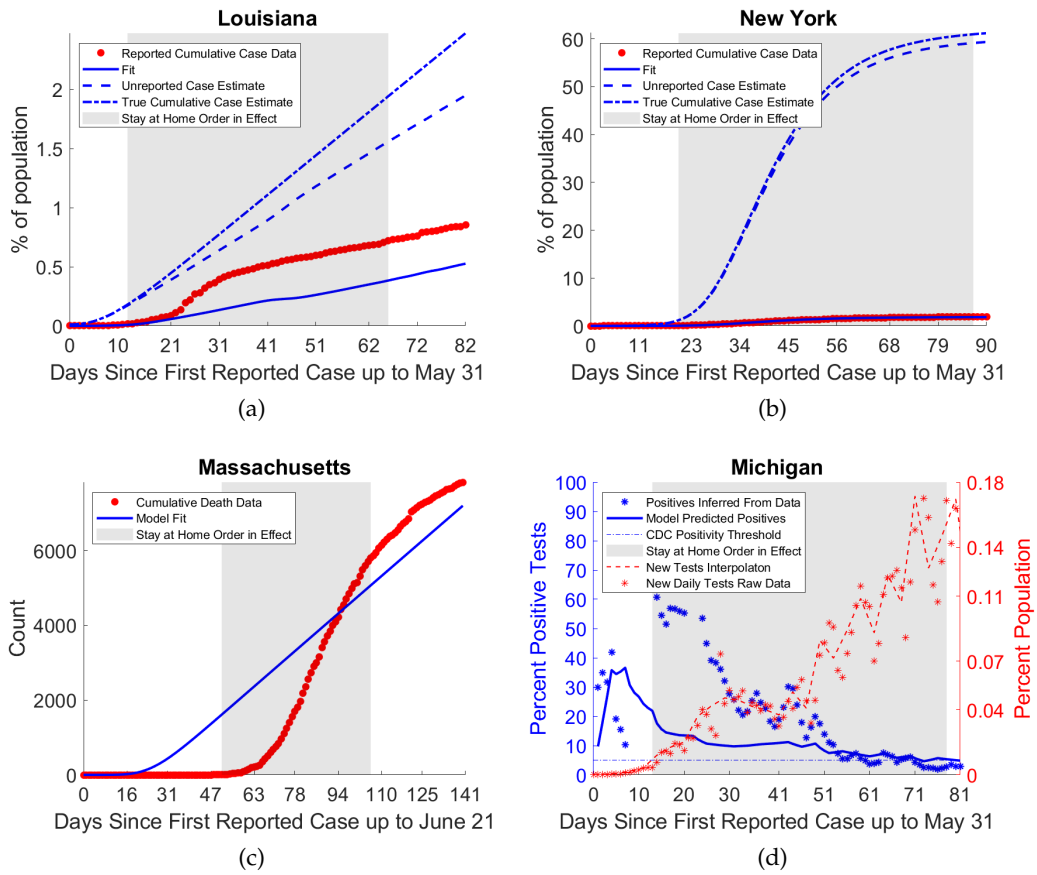


Figure S16: (a)-(d) are examples of the poor quality of fit for many states under alternative fitting procedure 2, with ρ fixed at its fit parameter values for the aggregated US fit. Though some states saw moderate decreases in residual other states saw large magnitude increases in error.

Table S1: Comparison of residual across baseline fitting and two considered alternative fitting scenarios. The results suggest that our model is not over identified.

State	Baseline Residual	Alt. Fitting 1 Change in Residual (%)	Alt Fitting 2 Change in Residual (%)
Alabama	4.206345e+04	915.631541	10.890491
Alaska	4.615980e+01	4471.896847	-3.042317
Arizona	4.657744e+04	8.630493	0.236204
Arkansas	6.367533e+03	3994.041526	31.393464
California	1.048639e+06	108.679742	33.684916
Colorado	9.923768e+04	5664.232285	-15.861060
Connecticut	6.631159e+05	99722.714230	21950.764709
Delaware	3.663345e+03	18856.640189	10.249598
District of Columbia	1.728646e+04	1371.605940	4.647304
Florida	2.756271e+05	7824.432291	18.560736
Georgia	1.967957e+05	8024.669882	15.070394
Guam	2.259009e+02	496.804326	-22.807001
Hawaii	6.527919e+01	12262.851571	-2.857237
Idaho	8.588132e+02	6704.486143	-10.383475
Illinois	1.193061e+06	23382.169701	7.484186
Indiana	2.557395e+05	19233.185115	-11.801250
Iowa	1.093170e+04	9550.595539	28.805513
Kansas	5.221363e+04	1319.187171	-22.398653
Kentucky	5.599718e+03	0.409305	0.014628
Louisiana	4.869764e+05	53355.284441	17338.863741
Maine	2.487835e+03	453.737408	13.076172
Maryland	4.326181e+05	22879.178371	8.549645
Massachusetts	6.717183e+05	239802.995245	96611.534355
Michigan	6.767791e+05	173954.418266	57630.223640
Minnesota	6.164779e+04	6317.489951	-10.505335
Mississippi	2.465630e+04	1307.620183	49.563402
Missouri	4.072829e+04	4317.638394	49.661619
Montana	1.285880e+02	5620.125651	2.484751
Nebraska	3.212663e+03	9692.020053	1.746522
Nevada	5.054666e+03	11406.721872	0.347801
New Hampshire	2.182800e+04	6.241721	10.294945
New Jersey	2.698465e+06	288705.623915	56204.747302
New Mexico	3.810991e+03	55.671747	-53.193424
New York	1.582585e+08	38495.440996	0.697325
North Carolina	3.253540e+04	3673.236007	-18.143785
North Dakota	4.461594e+02	121.118898	-6.918899
Northern Mariana Islands	2.443229e+01	5195.516351	-2.669997
Ohio	1.483507e+05	13721.418418	62.480528
Oklahoma	9.237180e+03	169.578393	-14.575337
Oregon	3.400838e+03	4495.139675	8.374007
Pennsylvania	6.291545e+05	143132.682898	38694.621036
Puerto Rico	9.349543e+03	992.434233	29.707681
Rhode Island	2.729352e+04	4506.704650	-18.076879
South Carolina	3.471895e+04	4437.531351	30.312198
South Dakota	6.862404e+02	10908.291363	7.447183
Tennessee	2.093300e+04	12212.549844	-21.656223
Texas	2.849479e+05	3513.104570	-6.634123
Utah	6.628265e+02	29480.415490	3.695024
Vermont	1.546140e+03	98.546912	-6.880094
Virgin Islands	3.363363e+01	331.924473	9.230913
Virginia	1.408870e+05	9318.656840	3.265786
Washington	1.583526e+05	10.157508	7.717952
West Virginia	1.250249e+03	2523.426439	18.722583
Wisconsin	7.915386e+04	6.023655	15.007094
Wyoming	2.957362e+02	1576.298324	-2.311043

⋮

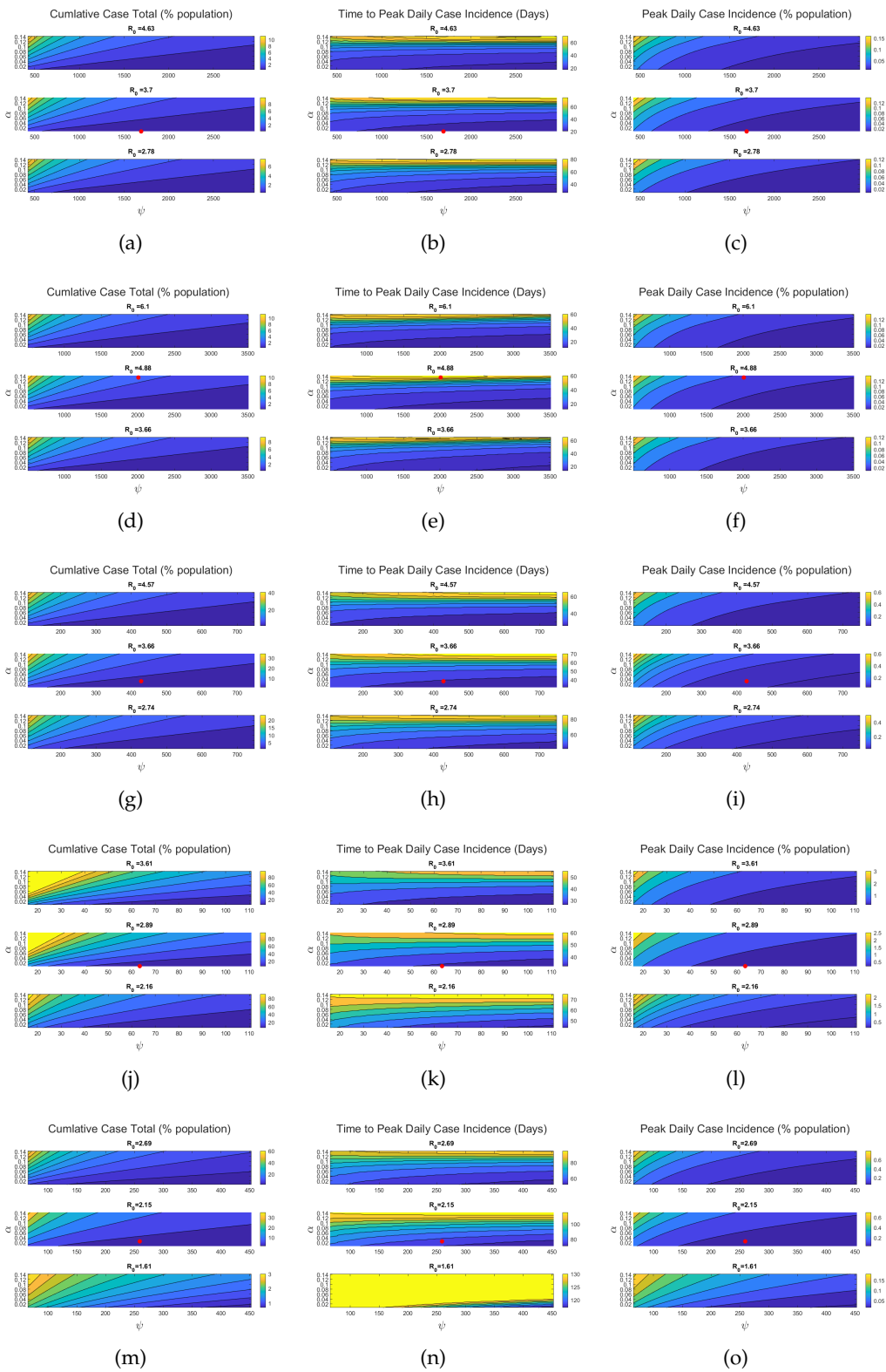


Figure S17: Examination of the combined effects of $\mathcal{R}_0, \psi, \alpha$ on different aspects of epidemic trajectory Row 1: Hawaii, Row 2: Tennessee, Row 3: Georgia, Row 4: New York, Row 5: The United States

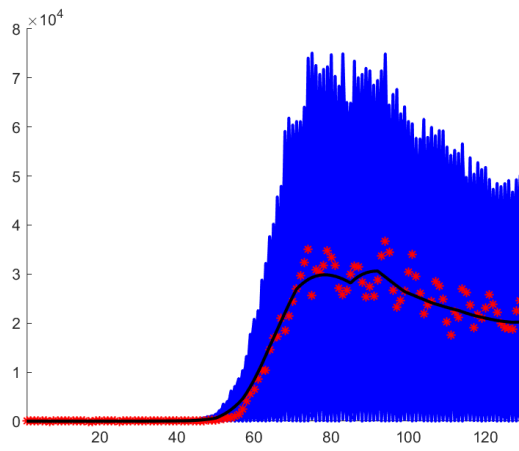


Figure S18: Synthetic covering data-sets (in blue), together with original data (red), and baseline daily case curve inferred from cumulative case fit (black) that were used for United states fit confidence interval generation (60% noise level).

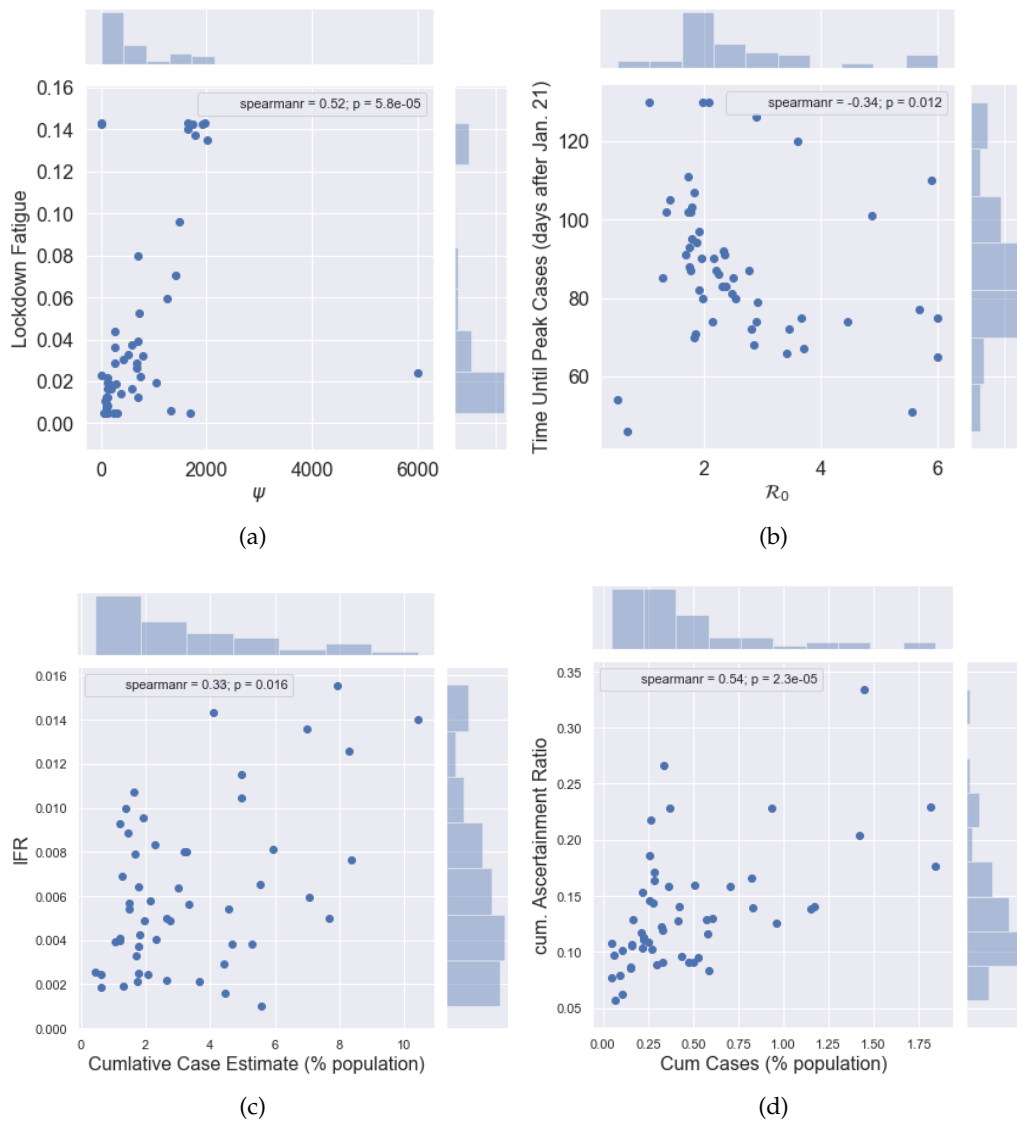


Figure S19: Correlation plots not included in the main body of the text.

Table S2: Parameters and quantities not included in main body of the paper. Deaths are as of June 21st.

State	k	A	η	μ/η	Deaths (%)
Alabama	0.203	2967.1	6.07	3.46	0.017
Alaska	0.323	675.5	12.00	1.75	0.001
Arizona	0.293	6630.7	12.00	1.75	0.018
Arkansas	0.188	1622.9	5.34	3.93	0.006
California	0.406	68667.8	1.71	12.26	0.014
Colorado	0.169	4151.9	2.47	8.49	0.029
Connecticut	0.285	4361.1	3.18	6.61	0.122
Delaware	0.240	1001.0	2.47	8.49	0.045
District of Columbia	0.260	785.9	12.00	1.75	0.076
Florida	0.260	15940.8	3.05	6.88	0.014
Georgia	0.287	8705.9	1.71	12.30	0.024
Guam	0.378	178.8	0.50	42.00	0.005
Hawaii	0.153	617.3	9.52	2.21	0.001
Idaho	0.228	1165.6	11.92	1.76	0.005
Illinois	0.375	20383.8	0.50	42.00	0.054
Indiana	0.134	3851.8	0.81	25.97	0.038
Iowa	0.186	1680.3	4.09	5.13	0.022
Kansas	0.168	1607.5	12.00	1.75	0.010
Kentucky	0.467	5963.4	0.50	42.00	0.012
Louisiana	0.358	6596.6	2.89	7.26	0.069
Maine	0.468	2698.0	12.00	1.75	0.008
Maryland	0.300	7783.6	0.82	25.56	0.052
Massachusetts	0.357	7152.9	11.68	1.80	0.115
Michigan	0.240	6852.8	4.22	4.98	0.063
Minnesota	0.219	5282.8	0.50	42.00	0.025
Mississippi	0.316	2685.9	12.00	1.75	0.032
Missouri	0.152	2666.7	4.33	4.85	0.016
Montana	0.248	1134.6	2.95	7.12	0.002
Nebraska	0.248	2057.2	0.50	42.00	0.013
Nevada	0.277	3655.6	2.26	9.30	0.016
New Hampshire	0.259	1008.2	11.49	1.83	0.025
New Jersey	0.672	17047.2	3.18	6.60	0.143
New Mexico	0.461	2761.9	12.00	1.75	0.022
New York	0.430	41826.2	1.60	13.09	0.164
North Carolina	0.231	10395.8	12.00	1.75	0.012
North Dakota	0.451	982.9	12.00	1.75	0.011
N. Marianas	0.697	169.8	0.50	42.00	0.004
Ohio	0.114	3793.5	3.35	6.26	0.023
Oklahoma	0.250	3338.6	12.00	1.75	0.010
Oregon	0.114	2061.2	0.50	42.00	0.004
Pennsylvania	0.107	5843.0	7.72	2.72	0.051
Puerto Rico	0.595	8144.4	0.50	42.00	0.005
Rhode Island	0.503	1523.7	2.69	7.81	0.085
South Carolina	0.216	3179.6	3.90	5.38	0.012
South Dakota	0.192	485.9	11.58	1.81	0.009
Tennessee	0.212	6215.2	4.63	4.53	0.007
Texas	0.201	25019.0	0.50	42.00	0.008
Utah	0.219	2010.0	3.41	6.15	0.005
Vermont	0.257	565.5	5.91	3.55	0.009
Virgin Islands	0.091	41.6	12.00	1.75	0.006
Virginia	0.163	5973.8	0.56	37.46	0.019
Washington	0.279	8961.4	0.50	41.99	0.017
West Virginia	0.263	2017.8	7.22	2.91	0.005
Wisconsin	0.314	7845.8	0.50	42.00	0.013
Wyoming	0.242	400.9	9.75	2.15	0.003
United States	0.358	2.71e+5	12.00	1.75	0.099

⋮