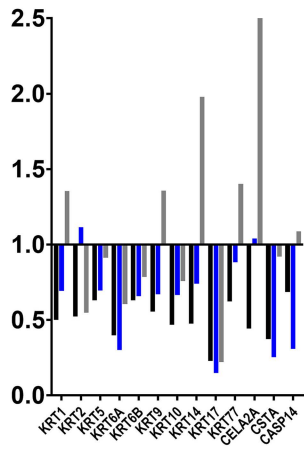
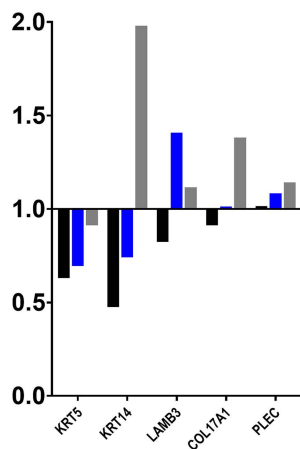


Significantly Altered Pathways

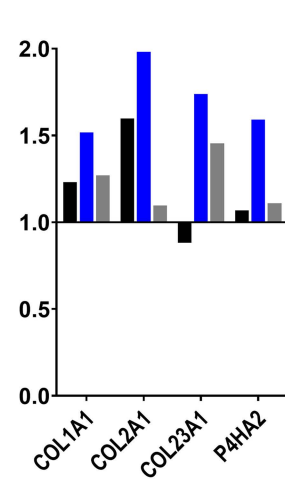
Keratinization
(Formation of the cornified envelope)



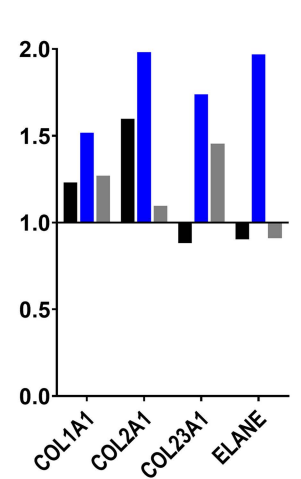
Type I hemidesmosome assembly



Collagen biosynthesis and modifying enzymes

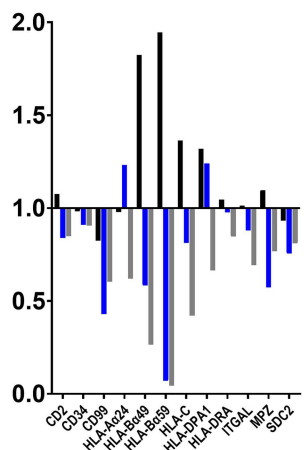


Collagen degradation

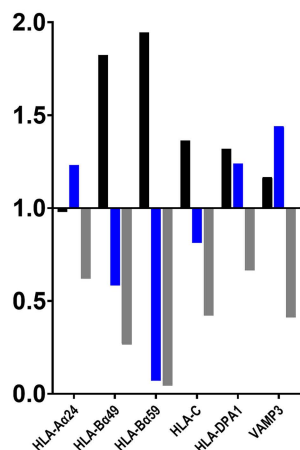


Fold-change Expression

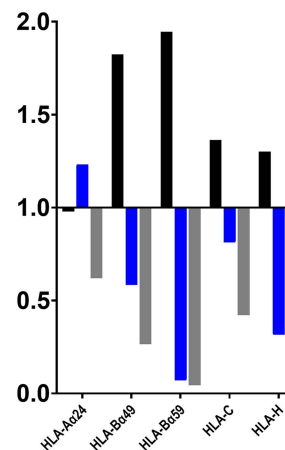
Cell adhesion molecules



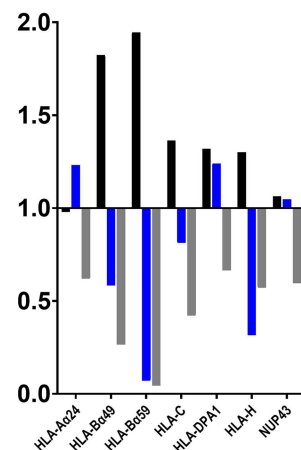
Phagosome



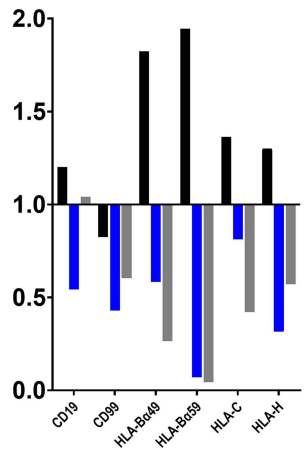
Endosomal/Vacuolar pathway (alpha/beta, gamma)



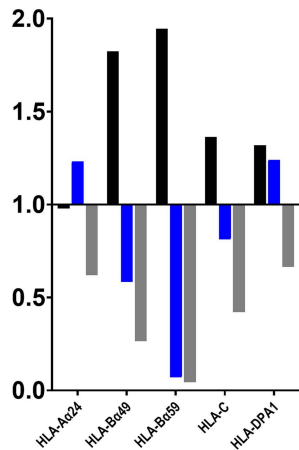
Interferon Signaling (alpha/beta, gamma)



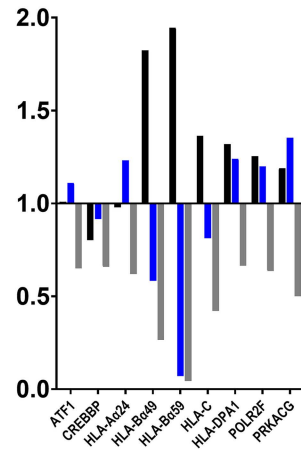
Immunoregulatory interactions between a Lymphoid and a non-Lymphoid cell



Antigen processing and presentation (Type I Diabetes, Autoimmune thyroid disease, Allograft rejection, Graft-versus-host disease, Viral myocarditis)



Viral carcinogenesis, (Herpes simplex infection, HTLV-I infection, Epstein-Barr virus infection)



Placebo
 Calcium
 Aquamin